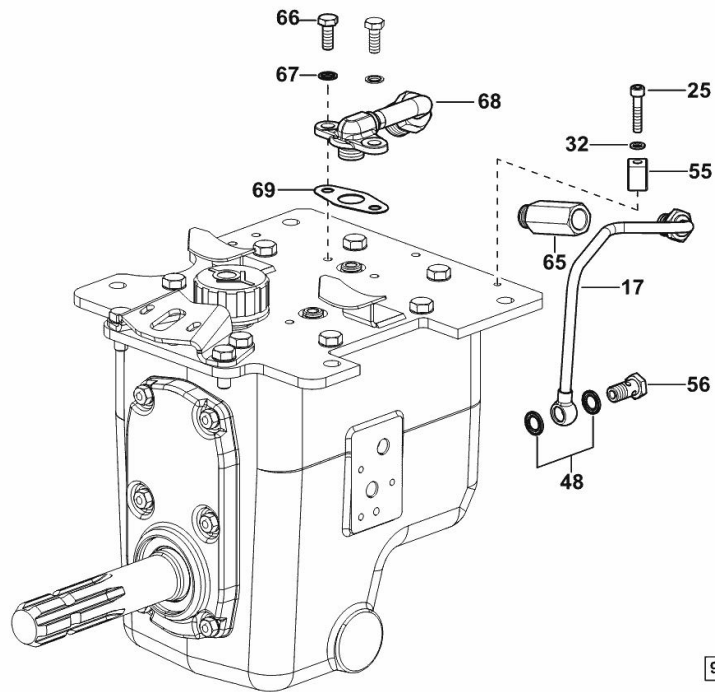


FRONT PTO HYDRAULIC SYSTEM

Fig.	P/n	QTY	Name
------	-----	-----	------

Notes:

[5110 4WD]



17	0.019.9674.3	1	tube
25	2.0312.110.2	1	screw
32	2.1470.002.2	1	lock washer 6
48	2.1561.106.0	2	gasket Ø 12 -B-
55	01141549	1	terminal d=8
56	2.3339.765.2/10	1	pipe union m 12 p.1x23
65	0.019.9675.3	1	screw
66	2.0112.207.2	2	screw m 8 p 1.25 x 20
67	2.1561.003.0	2	washer
68	0.019.9677.3	1	tube
69	0.052.1558.0/10	1	gasket

9_Y8959_85_0-C-001

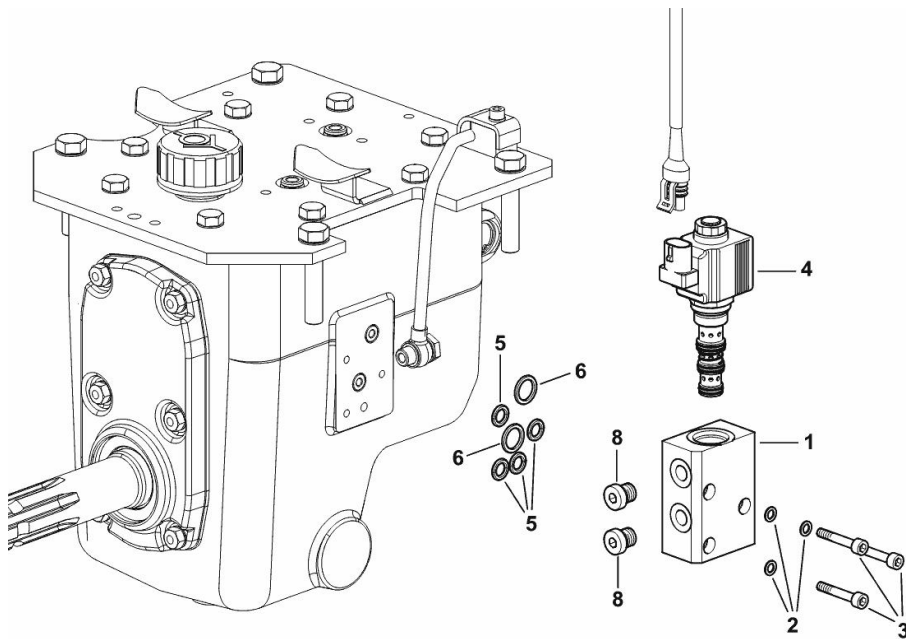
SOLENOID VALVE

Fig.	P/n	QTY	Name
------	-----	-----	------

Notes:

[5110 4WD]

1	0.017.6837.0	1	small block
2	2.1560.001.0	3	gasket 6.2x10
3	2.0312.112.2	3	screw m 6 p.1 x 35
4	2.3729.250.0/60	1	solenoid valve 13V - 20W ☞ 2.3729.250.0/60
5	2.1532.018.0	4	oil seal 9.19 x 2.62
6	2.1532.038.0	2	oil seal
8	2.3139.024.2	2	plug m 12 p.1.5



9_R8559_86_0-A-001

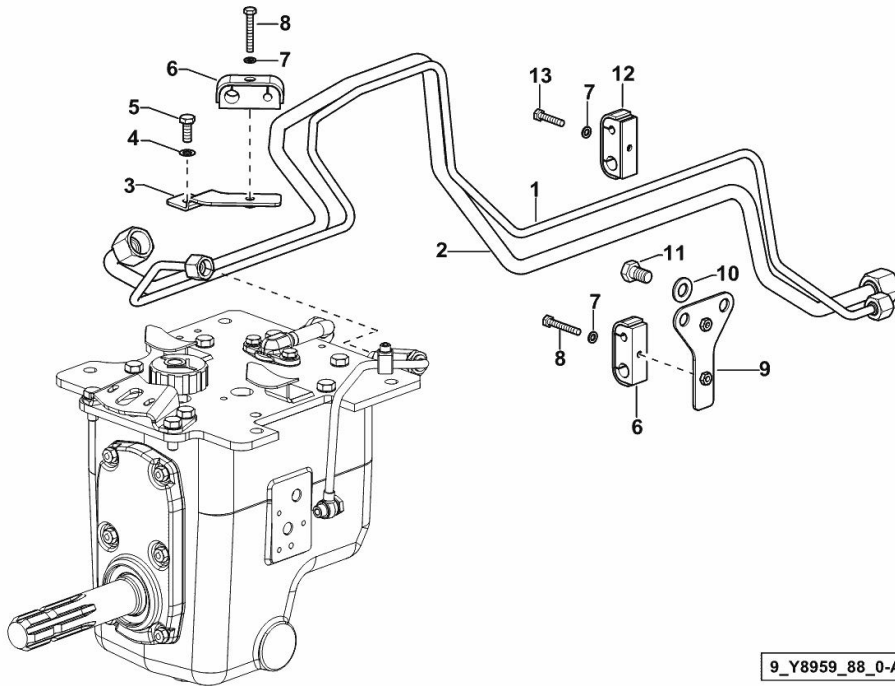
FRONT PTO HYDRAULIC SYSTEM

Fig.	P/n	QTY	Name
------	-----	-----	------

Notes:

[5110 4WD]

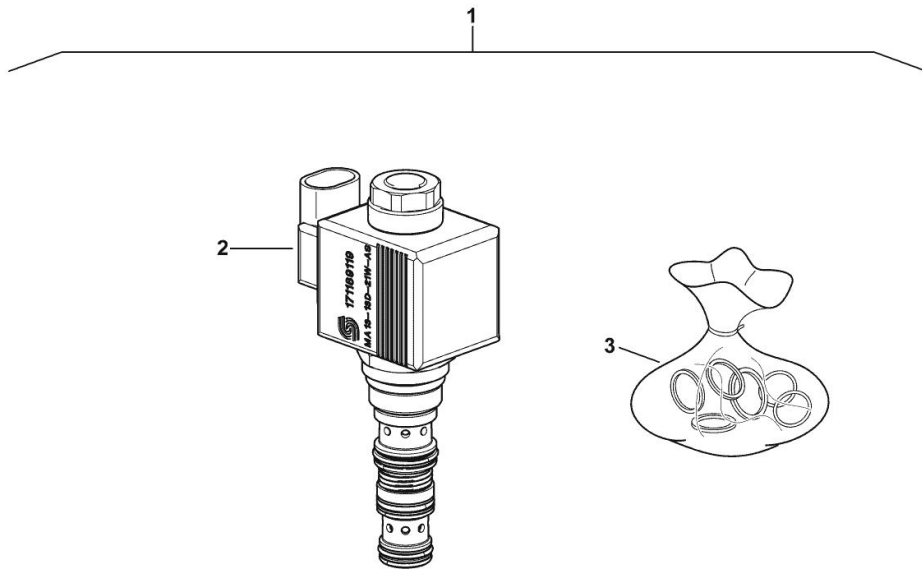
1	0.019.9676.3	1	tube
2	0.019.9678.3	1	tube
3	0.019.2609.3	1	bracket
4	2.1470.004.2	1	lock washer 8
5	2.0112.207.2	1	screw m 8 p 1.25 x 20
6	2.3320.305.0	2	terminal 14/8
7	2.1470.002.2	2	lock washer 6
8	2.0112.015.2	2	screw m 6 p.1x40
9	0.019.2606.3	1	bracket
10	2.1310.007.2	2	flat washer 13 x 24
11	2.0112.407.2	2	screw m 12 p.1.75 x 20
12	2.3320.205.0	1	terminal
13	2.0112.011.2	1	screw m 6 p.1x30



9_Y8959_88_0-A-001

SOLENOID VALVE

Fig.	P/n	QTY	Name
1	2.3729.250.0/60	1	solenoid valve 13V - 20W
2	0.900.1130.7	1	coil
3	0.900.2128.5	1	gasket set



2.3729.250.0/60

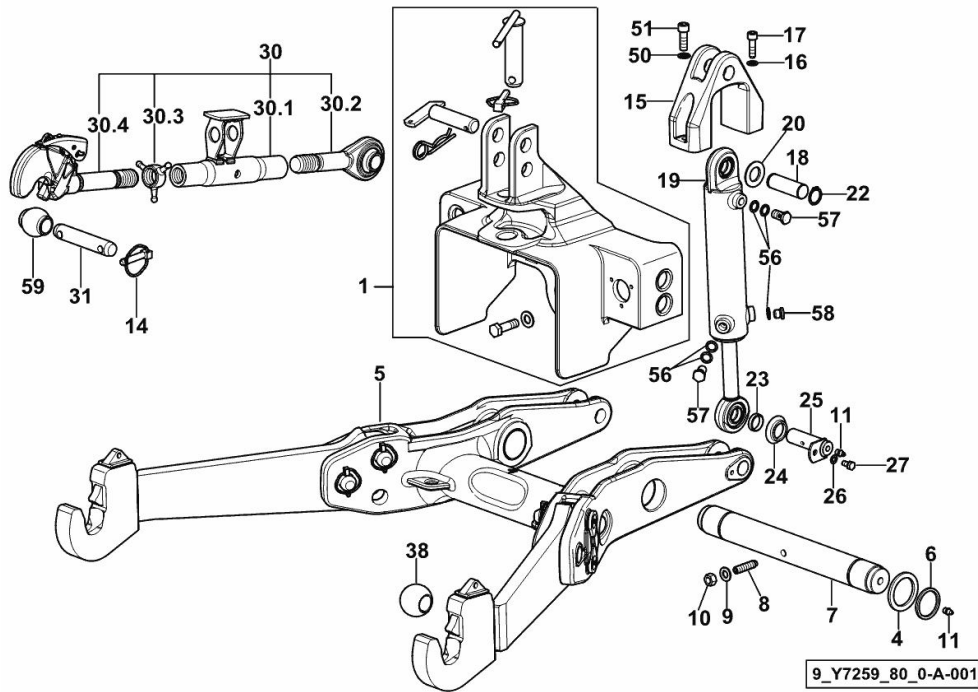
Section: N0 - FRONT LIFT

FRONT HYDRAULIC POWER-LIFT

Fig.	P/n	QTY	Name
------	-----	-----	------

Notes:

[5110 4WD] 10214 <-



1	0.019.4250.4	1	support ☞ 0.019.4250.4 ☞ 0.019.4250.4
4	2.1549.244.0/20	2	shim 51x68x5
5	0.018.9323.4	1	arm ☞ 0.018.9323.4
6	2.1514.053.0	2	oil seal 45x55x4
7	0.007.6983.0/10	1	shaft
8	2.0599.079.2	1	screw m 12x1.25x50
9	2.1310.007.2	1	flat washer 13 x 24
10	2.1011.422.2	1	nut m 12 p.1.25
11	2.3820.105.2	4	grease gun m 10 p.1 x 7
14	0.010.9322.4	2	pin Ø 11
15	0.010.6707.0/10	2	bracket
16	2.1474.010.2	4	washer 10
17	2.0312.312.2	4	screw m10p.1,5x35
18	2.1699.479.0	2	pin 25x76
19	0.010.6837.4/20	2	cylinder ☞ 0.010.6837.4/20
20	2.1569.178.0	4	gasket 26x38x4
22	2.1410.010.2	4	circlip 25
23	2.1549.334.2	4	spacer 26x30x8
24	0.010.4205.0	4	gasket
25	0.019.5682.2	2	pin
26	2.1470.004.2	2	lock washer 8
27	2.0112.205.2	2	screw m 8 p.1.25 x 16
30	0.018.7619.4	1	top link
30.1	0.018.7619.3	1	sleeve
30.2	0.013.2769.3	1	rod sx/lh/li
30.3	0.001.5059.0	1	wing nut
30.4	0.013.2770.3	1	automatic hook dx/rh/re ☞ 0.013.2770.3
31	2.1669.024.2	1	pin 25.4 x 133
38	0.760.5952.0	2	cap Ø 56
50	2.1474.011.2	2	spring washer 12
51	2.0313.412.2	2	screw m 12 p.1.75x35
56	2.1560.010.0	10	gasket 14.2 x 20
57	2.3335.006.2	4	pipe union m 14 p.1.5X26
58	2.3120.009.4	2	plug m 14 p.1.5
59	0.96001.17.0	1	cap Ø 50

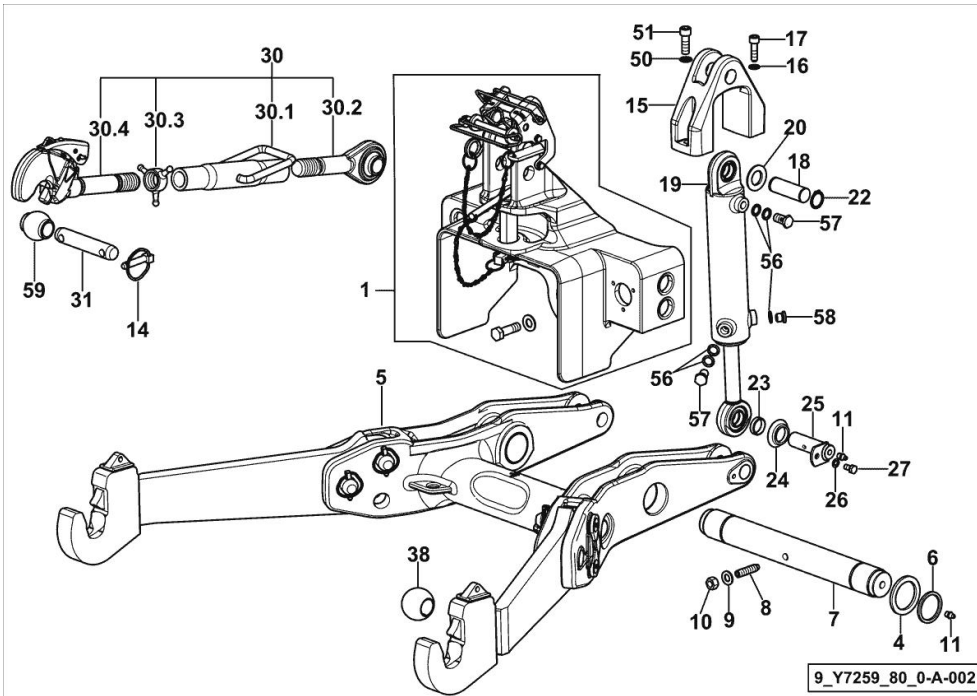
Section: N0 - FRONT LIFT

FRONT HYDRAULIC POWER-LIFT

Fig.	P/n	QTY	Name
------	-----	-----	------

Notes:

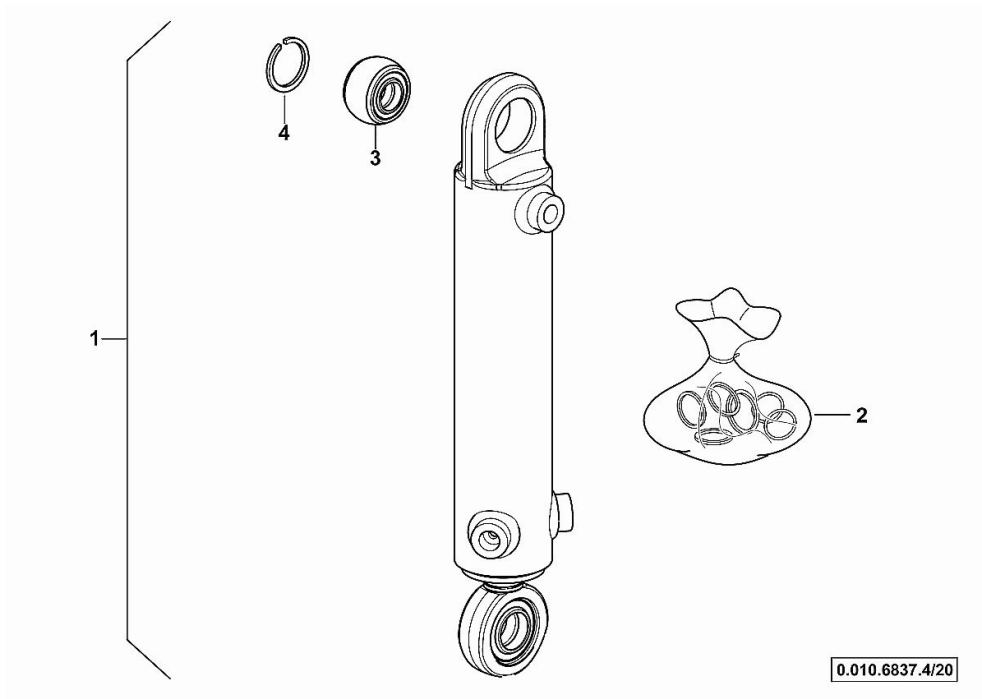
[5110 4WD]



1	0.019.4250.4/10	1	support ☞ 0.019.4250.4/10
4	2.1549.244.0/20	2	shim 51x68x5
5	0.018.9323.4	1	arm ☞ 0.018.9323.4
6	2.1514.053.0	2	oil seal 45x55x4
7	0.007.6983.0/10	1	shaft
8	2.0599.079.2	1	screw m 12x1.25x50
9	2.1310.007.2	1	flat washer 13 x 24
10	2.1011.422.2	1	nut m 12 p.1.25
11	2.3820.105.2	4	grease gun m 10 p.1 x 7
14	0.010.9322.4	2	pin Ø 11
15	0.010.6707.0/20	2	bracket
16	2.1474.010.2	4	washer 10
17	2.0312.312.2	4	screw m10p.1,5x35
18	2.1699.479.0	2	pin 25x76
19	0.010.6837.4/20	2	cylinder ☞ 0.010.6837.4/20
20	2.1569.178.0	4	gasket 26x38x4
22	2.1410.010.2	4	circlip 25
23	2.1549.334.2	4	spacer 26x30x8
24	0.010.4205.0	4	gasket
25	0.019.5682.2	2	pin
26	2.1470.004.2	2	lock washer 8
27	2.0112.205.2	2	screw m 8 p.1.25 x 16
30	0.013.2771.4/10	1	top link
30.1	0.013.2767.3/10	1	sleeve
30.2	0.013.2769.3	1	rod sx/lh/li
30.3	0.001.5059.0	1	wing nut
30.4	0.013.2770.3	1	automatic hook dx/rh/re ☞ 0.013.2770.3
31	2.1669.024.2	1	pin 25.4 x 133
38	0.760.5952.0	2	cap Ø 56
50	2.1474.011.2	2	spring washer 12
51	2.0313.412.2	2	screw m 12 p.1.75x35
56	2.1560.010.0	10	gasket 14.2 x 20
57	2.3335.006.2	4	pipe union m 14 p.1.5X26
58	2.3120.009.4	2	plug m 14 p.1.5
59	0.96001.17.0	1	cap Ø 50

CYLINDER PARTS

Fig.	P/n	QTY	Name
1	0.010.6837.4/20	1	cylinder
2	0.010.3597.0	1	seal ring kit
3	0.900.2118.7	1	ball joint
4	0.010.3596.1	1	circlip



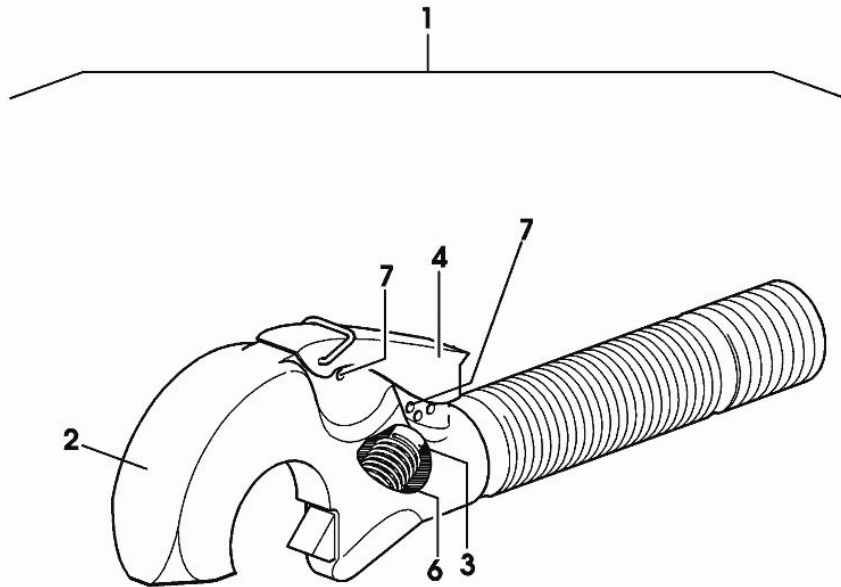
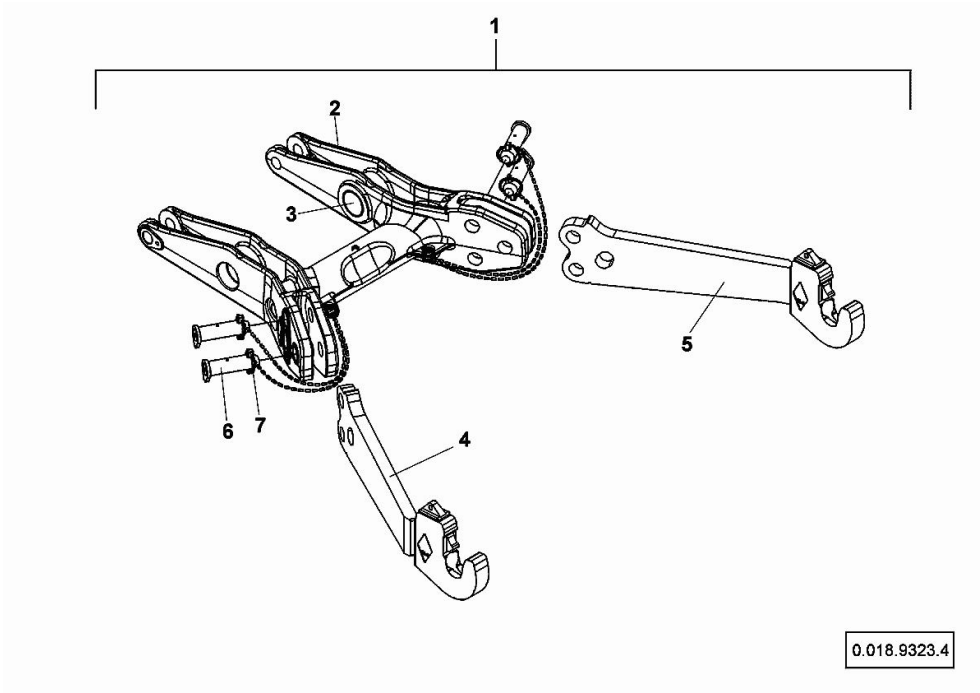
ADJUSTABLE LIFT ROD PARTS

Fig.	P/n	QTY	Name
1	0.013.2770.3	1	automatic hook dx/rh/re
2	0.000.0000.1	1	cannot be supplied
3	0.010.2787.1	1	pin
4	04323249	1	lever
6	0.010.2787.0	1	spring
7	0.009.4677.2	2	pin 6 x 28

0_013_2770_3

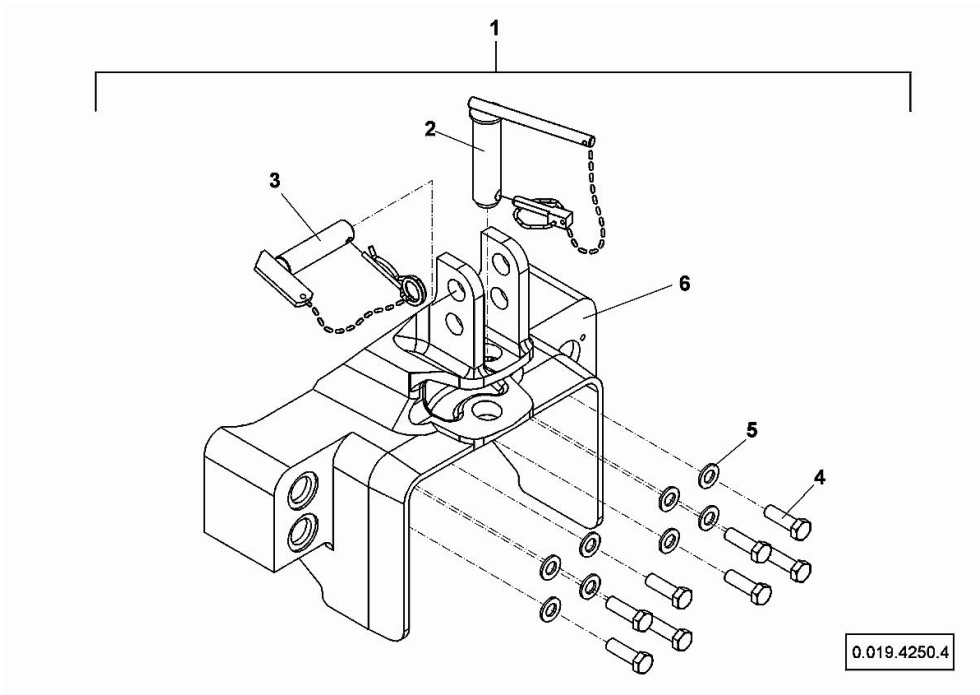
LIFTING ARM

Fig.	P/n	QTY	Name
1	0.018.9323.4	1	arm
2	0.900.1998.3	1	support
3	0.900.1998.4	2	bushing
4	0.900.1998.5	1	right hand arm
5	0.900.1998.6	1	left hand arm
6	0.900.0834.0	4	pin
7	0.900.0825.8	2	piston pin 7.5x42, kit



3 POINT HITCH

Fig.	P/n	QTY	Name
1	0.019.4250.4	1	support
2	0.900.1998.7	1	pin
3	0.900.1998.8	1	pin
4	0.900.1998.9	8	screw m 15x28x2.5
5	0.900.1201.9	8	washer
6	0.000.0000.1	1	cannot be supplied



Buy Now



Our support email:

ebooklibonline@outlook.com