

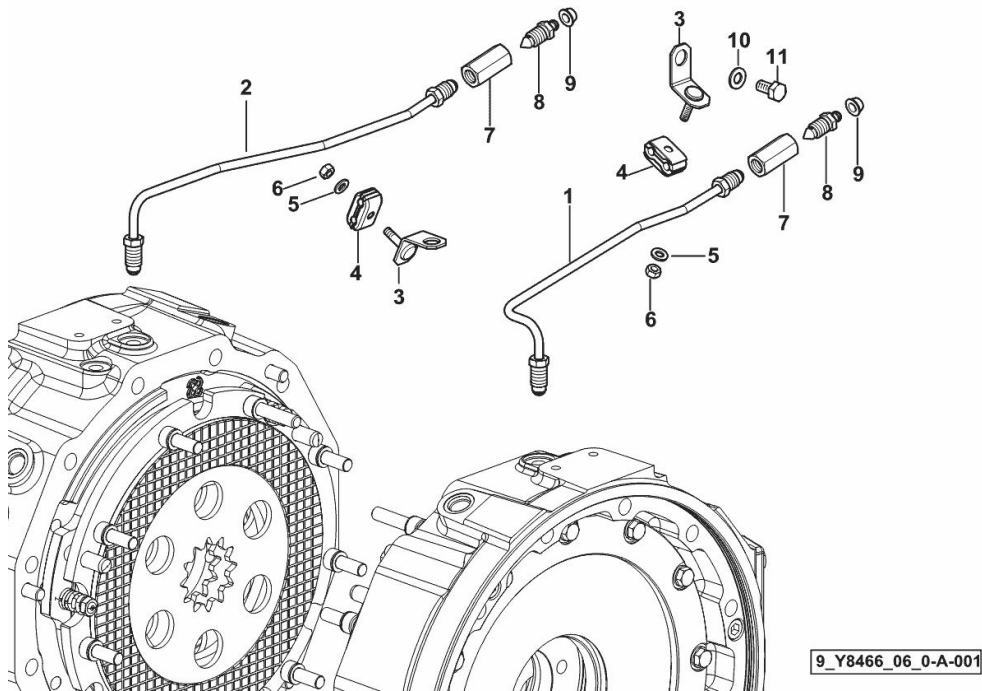
BLEEDING TUBE

Fig.	P/n	QTY	Name
------	-----	-----	------

Notes:

[5110P 2WD] [5110P 4WD]

1	0.019.8934.3	1	tube sx/lh/li
2	0.017.8997.3	1	tube dx/rh/re
3	0.015.6655.3	2	bracket
4	2.3321.002.0	2	terminal Ø 6.35
5	2.1310.002.2	2	flat washer 6.4x12.5
6	2.1011.103.2	2	nut m 6 p.1
7	2.3339.658.2/20	2	pipe fitting m 12 p.1.25
8	0.170.5455.0	2	valve
9	2.3199.039.0	2	plug
10	2.1310.004.2	1	flat washer 8.4x17
11	2.0112.205.2	1	screw m 8 p.1.25 x 16



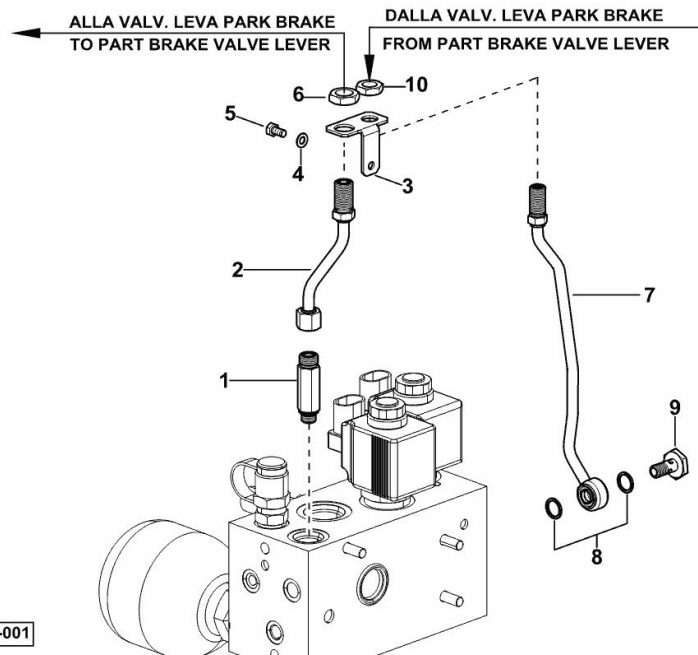
PARK SYSTEM - BRAKE

Fig.	P/n	QTY	Name
------	-----	-----	------

Notes:

[5110P 2WD] [5110P 4WD]

1	2.3249.440.2	1	pipe fitting
2	0.019.1066.3	1	tube
3	0.019.1067.0	1	bracket
4	2.1475.002.2	1	conical washer 8
5	2.0112.205.2	1	screw m 8 p.1.25 x 16
6	2.1019.170.2	1	nut 13/16 "-16 UN-2B
7	0.019.1065.3	1	tube
8	2.1531.048.0	2	oil seal 18.72x2.62
9	2.3249.597.2	1	pipe union
10	2.1019.169.2	1	nut 11/16 "-16 UN-2B



9_Y8466_31_0-A-001

PARK SYSTEM - BRAKE

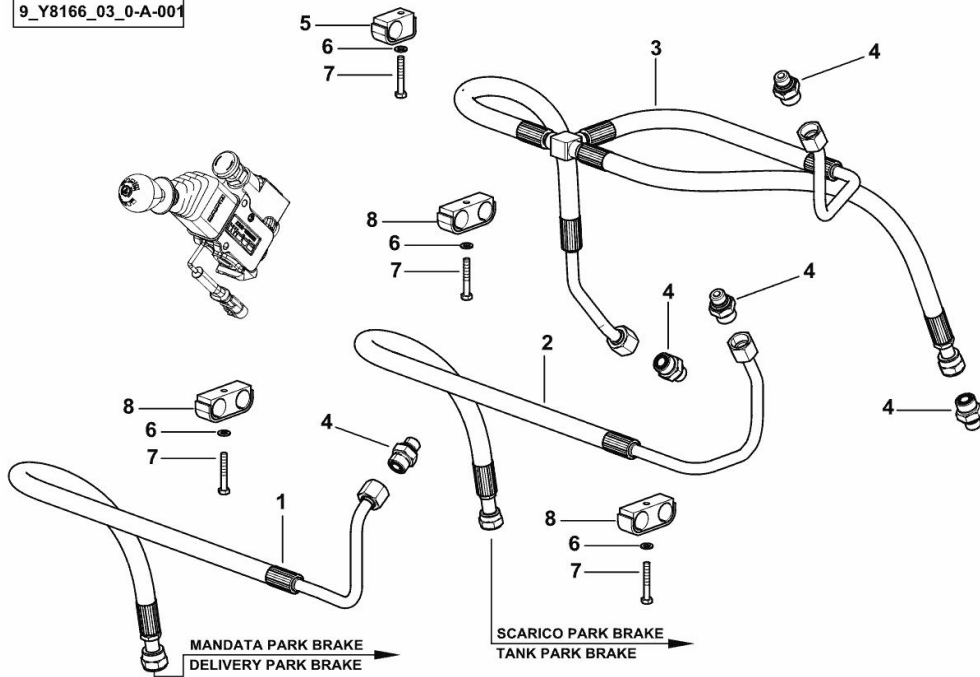
Fig.	P/n	QTY	Name
------	-----	-----	------

Notes:

[5110P 2WD] [5110P 4WD]

1	0.019.1072.3/10	1	tube
2	0.019.1068.3/10	1	tube
3	0.019.1073.3/10	1	tube
4	2.3275.010.0	5	pipe fitting
5	2.3320.111.0	1	terminal Ø 20
6	2.1310.002.2	4	flat washer 6.4x12.5
7	2.0112.015.2	4	screw m 6 p.1x40
8	2.3320.321.0	3	terminal Ø 20/20

9_Y8166_03_0-A-001



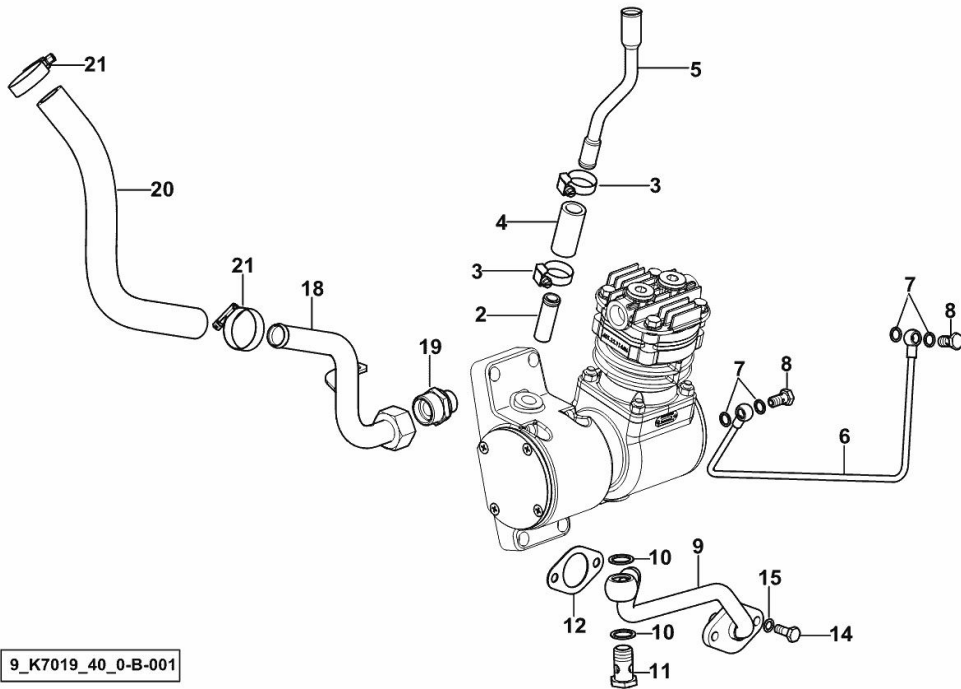
COMPRESSOR PIPES

Fig.	P/n	QTY	Name
------	-----	-----	------

Notes:

[5110P 2WD] [5110P 4WD]

2	2.3339.490.2	1	pipe fitting m 16 p.1.5
3	2.6851.002.0	2	clamp Ø 20/32
4	0.007.0729.0/10	1	sleeve
5	0.019.3533.3/10	1	tube
6	0.019.3532.3	1	tube
7	2.1560.005.0	4	copper gasket 10.2 x 14
8	2.3339.074.2	2	pipe union m 10 p.1x19
9	0.019.3534.3/10	1	exhaust pipe
10	2.1560.014.0	2	washer 18.2 x 24
11	2.3335.008.2	1	pipe union m 18 p.1.5 x 32
12	0.019.3545.0	1	gasket
14	2.0112.207.2	2	screw m 8 p 1.25 x 20
15	2.1480.014.2	8	washer 8
18	0.019.4108.3	1	tube
19	04422764	1	pipe fitting m 22 p.1.5x22
20	0.014.9301.0	1	tube
21	2.6851.003.0	2	clamp Ø 25/40



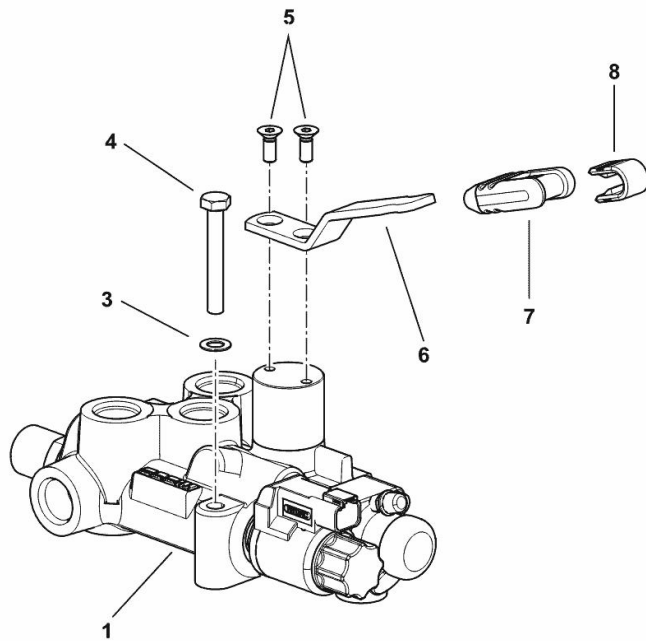
9_K7019_40_0-B-001

Fig.	P/n	QTY	Name
------	-----	-----	------

Notes:

[5110P 2WD] [5110P 4WD]

1	2.3729.714.0/30	1	valve (10092 <-) ☞ 2.3729.714.0/30
1	2.3729.714.0/40	1	valve ☞ 2.3729.714.0/40
3	2.1470.004.2	1	lock washer 8
4	2.0112.220.2	1	screw m 8 p.1.25x55
5	2.0342.203.6	2	screw m 6 p.1.0 x 16
6	0.018.0680.0	1	lever
7	0.007.5561.0	1	knob
8	0.007.5562.0	1	coupling



9_R8889_10_0-A-001

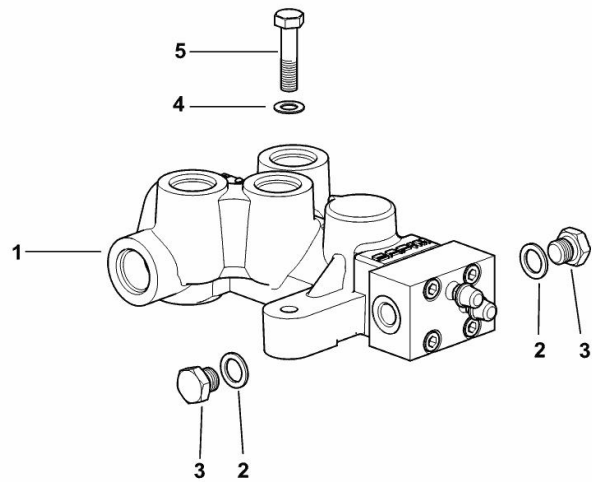
HYDRAULIC BREAKING FOR TRAILER

Fig.	P/n	QTY	Name
------	-----	-----	------

Notes:

- EXPORT F [5110P 2WD] - EXPORT F [5110P 4WD]

1	2.3719.550.0/50	1	valve (10309 <-) ☞ 2.3719.550.0/50
1	2.3719.550.0/60	1	valve (-> 10311) ☞ 2.3719.550.0/60
2	2.1560.008.0	1	gasket 12.2 x 18
3	2.3110.422.2	1	plug m 12 p.1.25
4	2.1470.004.2	1	lock washer 8
5	2.0112.213.2	1	screw m 8 p.1.25 x 35



9_J1589_00_0-A-001

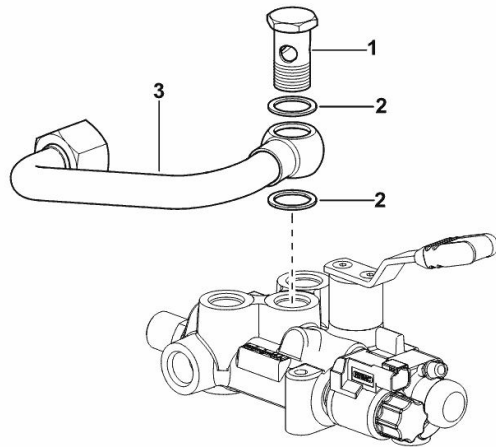
HYDRAULIC BREAKING FOR TRAILER

Fig.	P/n	QTY	Name
------	-----	-----	------

Notes:

- FOR TYPES WITH ELECTRICAL REMOTE VALVE CONTROL [5110P 2WD] - FOR TYPES WITH
ELECTRICAL REMOTE VALVE CONTROL [5110P 4WD]

1	2.3335.009.2	1	pipe union m 22 p.1.5 x 39
2	2.1560.018.0	2	gasket 22.2 x 29
3	0.017.8767.3	1	tube



9_Y8889_07_0-A-001

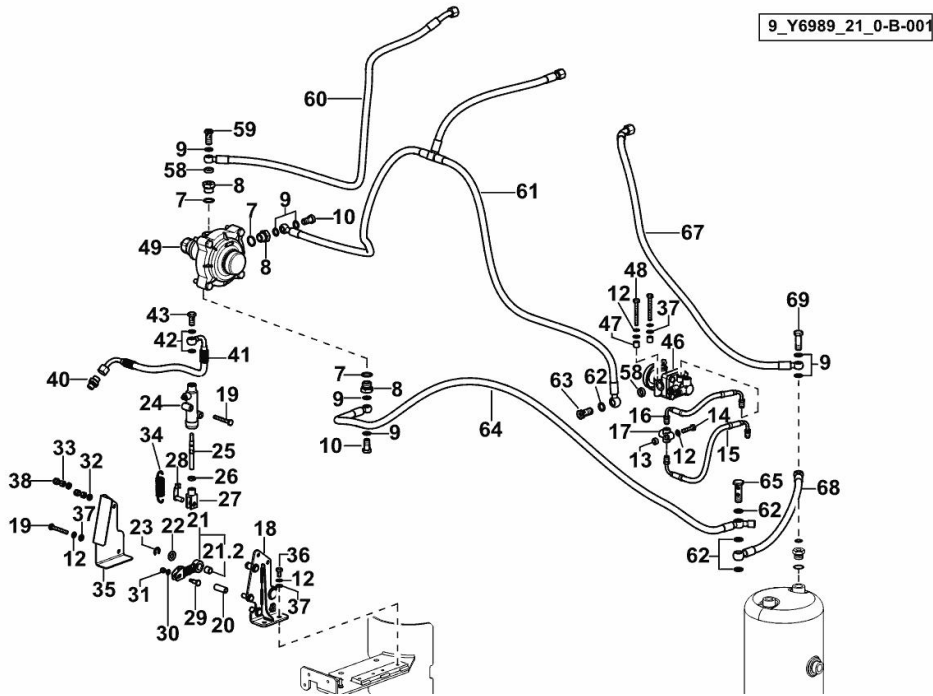
AIR BRAKING SYSTEM

Fig.	P/n	QTY	Name
------	-----	-----	------

Notes:

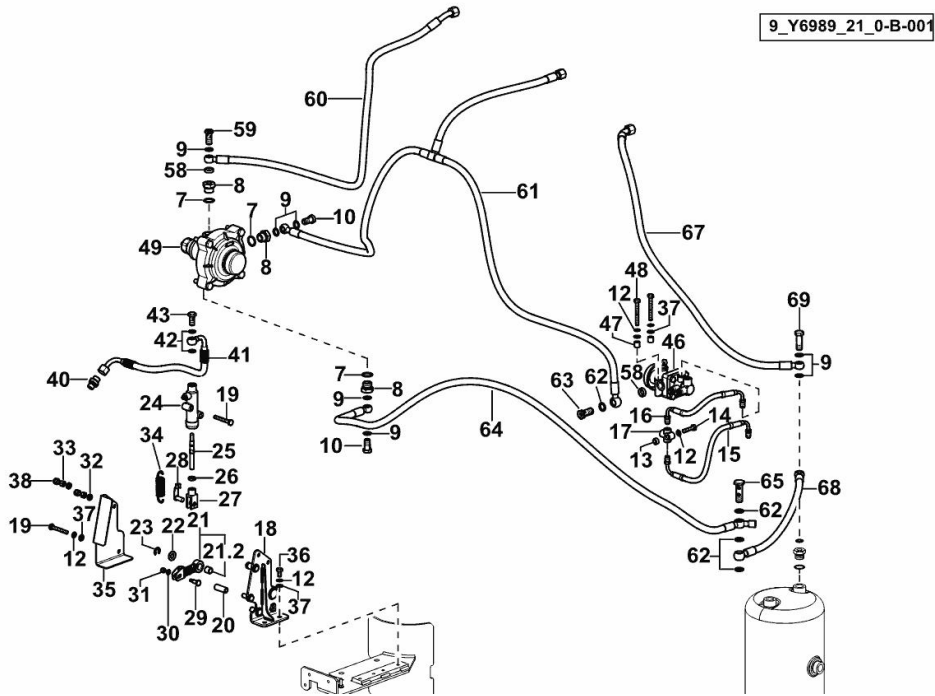
- EXPORT D [5110P 2WD] 10169 <- - EXPORT D [5110P 4WD] 10169 <-

7	2.1560.017.0	8	gasket 22.2 x 27
8	2.3339.766.2	8	reduction m 22 p.1.5/m 14 p.1.5
9	2.1560.010.0	17	gasket 14.2 x 20
10	2.3332.004.2	6	pipe union m 14 p.1.5 x 27
12	2.1470.004.2	8	lock washer 8
13	2.1549.632.2	1	spacer
14	2.0112.213.2	1	screw m 8 p.1.25 x 35
15	0.016.5715.3	1	tube
16	0.019.5400.3	1	tube
17	03499196	1	pipe fitting T
18	0.016.1380.3/10	1	support
19	2.0112.220.2	3	screw m 8 p.1.25x55
20	2.1549.077.2	1	bush 8.5x14x36
21	0.016.1376.4	1	lever
21.2	2.1559.190.0	1	special bushing
22	2.1310.007.2	1	flat washer 13 x 24
23	2.1430.011.7	1	circlip 10
24	0.011.8976.4/10	1	pump
25	0.014.0193.0/10	1	rod
26	2.1011.206.2	1	nut
27	2.3510.005.2	1	fork
28	2.1673.008.2	1	pin m 10
29	2.1699.597.2	1	pin
30	2.1310.002.2	2	flat washer 6.4x12.5
31	2.1120.003.2	1	self-locking nut m 6
32	2.1549.583.2	2	spacer 8.2x15x3
33	2.1011.005.2	2	nut m 8 p.1.25
34	2.4049.237.2	1	spring
35	0.016.1381.0	1	shield
36	2.0112.205.2	2	screw m 8 p.1.25 x 16
37	2.1310.004.2	5	flat washer 8.4x17
38	2.1120.005.2	2	nut m 8 p.1.25
40	2.3275.006.0	1	pipe fitting
41	0.019.5168.3	1	tube
42	2.1561.106.0	2	gasket Ø 12 -B-
43	2.3339.472.2/10	1	pipe union m 12 p.1.25x26
46	0.011.8633.4	1	valve ☞ 0.011.8633.4
47	2.1579.825.0	2	spacer
48	2.0112.222.2	2	screw m 8 p.1.25x65
49	0.012.1713.4	1	valve



AIR BRAKING SYSTEM

Fig.	P/n	QTY	Name
58	2.1569.154.0	2	gasket 16.2x22x6
59	2.3335.053.2	1	pipe union m 14 p.1.5x32
60	0.019.5983.3	1	tube - BLACK
61	0.019.5980.3	1	tube - YELLOW
62	2.1569.227.0	4	gasket 16.2 x 22 x 2
63	2.3335.054.2	1	pipe union m 16 p.1.5
64	0.019.5979.3	1	tube
65	2.3339.597.2/10	1	pipe union m 16 p.1.5x50
67	0.019.6004.3	1	tube - RED
68	0.019.5506.3	1	tube
69	2.3339.280.2	1	pipe union m 14 p.1.5X42

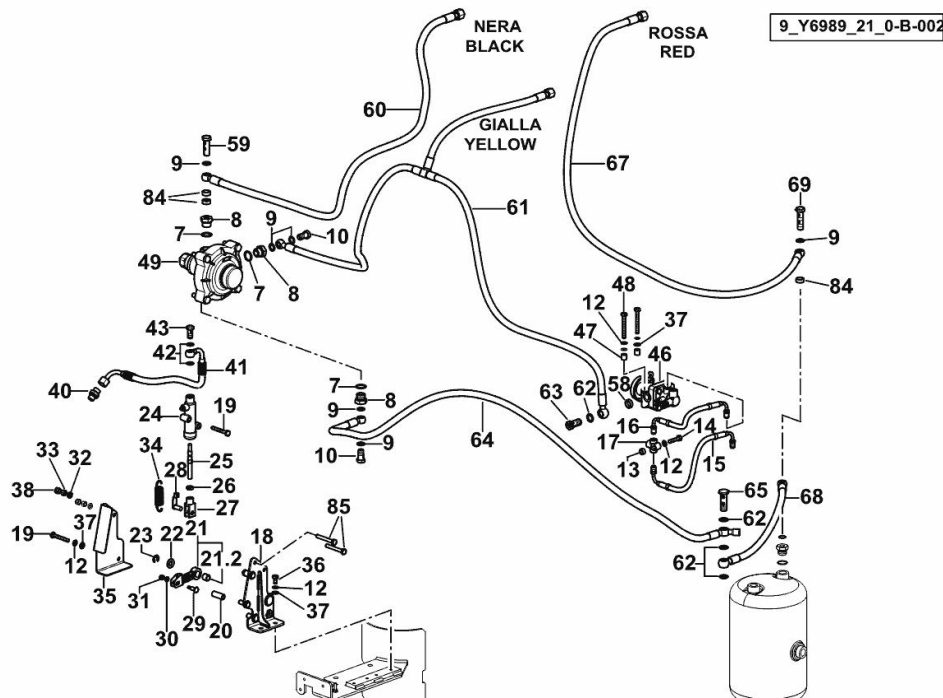


AIR BRAKING SYSTEM

Fig.	P/n	QTY	Name
------	-----	-----	------

Notes:

- EXPORT D [5110P 2WD] - EXPORT D [5110P 4WD] -> 10174



7	2.1560.017.0	8	gasket 22.2 x 27
8	2.3339.766.2	8	reduction m 22 p.1.5/m 14 p.1.5
9	2.1560.010.0	16	gasket 14.2 x 20
10	2.3332.004.2	6	pipe union m 14 p.1.5 x 27
12	2.1470.004.2	8	lock washer 8
13	2.1549.632.2	1	spacer
14	2.0112.213.2	1	screw m 8 p.1.25 x 35
15	0.016.5715.3	1	tube
16	0.019.5400.3/10	1	tube
17	03499196	1	pipe fitting T
18	0.016.1380.3/10	1	support
19	2.0112.220.2	1	screw m 8 p.1.25x55
20	2.1549.077.2	1	bush 8.5x14x36
21	0.016.1376.4	1	lever
21.2	2.1559.190.0	1	special bushing
22	2.1310.007.2	1	flat washer 13 x 24
23	2.1430.011.7	1	circlip 10
24	0.011.8976.4/10	1	pump
25	0.014.0193.0/10	1	rod
26	2.1011.206.2	1	nut
27	2.3510.005.2	1	fork
28	2.1673.008.2	1	pin m 10
29	2.1699.597.2	1	pin
30	2.1310.002.2	2	flat washer 6.4x12.5
31	2.1120.003.2	1	self-locking nut m 6
32	2.1549.583.2	2	spacer 8.2x15x3
33	2.1011.005.2	2	nut m 8 p.1.25
34	2.4049.237.2	1	spring
35	0.016.1381.0/10	1	cover
36	2.0112.205.2	2	screw m 8 p.1.25 x 16
37	2.1310.004.2	5	flat washer 8.4x17
38	2.1120.005.2	2	nut m 8 p.1.25
40	2.3275.006.0	1	pipe fitting
41	0.019.5168.3	1	tube
42	2.1561.106.0	2	gasket Ø 12 -B-
43	2.3339.472.2/10	1	pipe union m 12 p.1.25x26
46	0.011.8633.4	1	valve ☞ 0.011.8633.4
47	2.1579.825.0	2	spacer
48	2.0112.222.2	2	screw m 8 p.1.25x65
49	0.012.1713.4	1	valve

Buy Now



Our support email:

ebooklibonline@outlook.com