

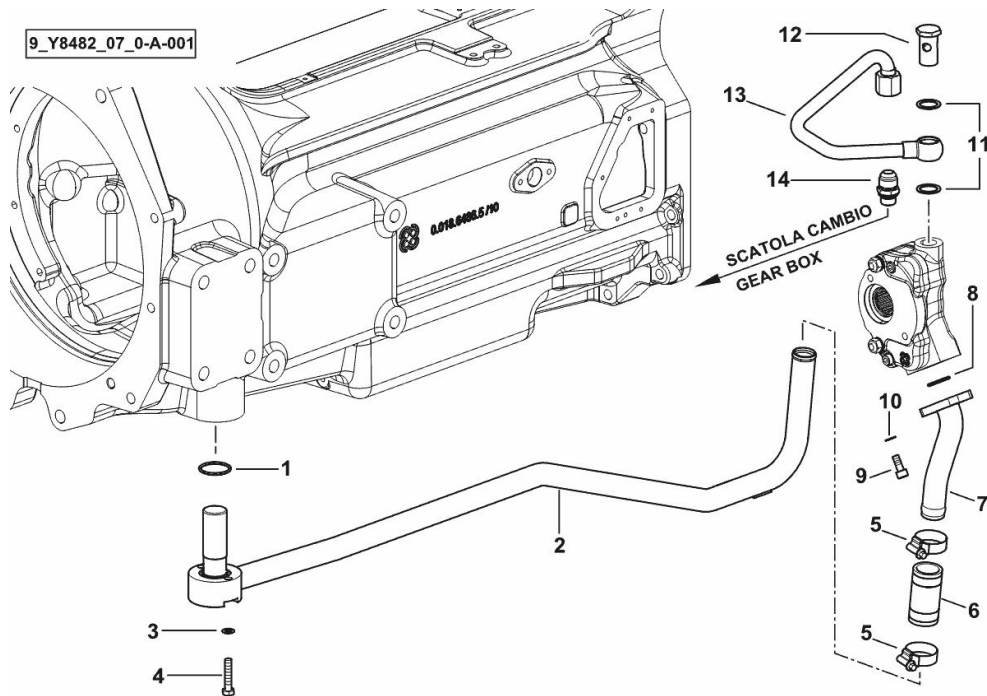
OIL TRANSFER PUMP HYDRAULIC SYSTEM

Fig.	P/n	QTY	Name
------	-----	-----	------

Notes:

[5120 -> ZKDBA202W0TD20001]

1	2.1531.091.0	1	oil seal 34.60 x 2.62
2	0.018.6201.3	1	tube
3	2.1470.004.2	2	lock washer 8
4	2.0112.215.2	2	screw m 8 p.1.25 x 40
5	2.6851.004.0	2	clamp Ø 32/50
6	2.3213.228.0	1	sleeve
7	0.015.6617.3	1	tube
8	2.1531.062.0	1	oil seal 23.81 x 2.62
9	2.0312.206.2	2	screw m 8 p 1.25 x 20
10	2.1480.014.2	2	washer 8
11	2.1560.018.0	2	gasket 22.2 x 29
12	2.3335.009.2	1	pipe union m 22 p.1.5 x 39
13	0.015.1335.3	1	tube
14	2.3249.141.2	1	pipe fitting 7/8 JIC-M18



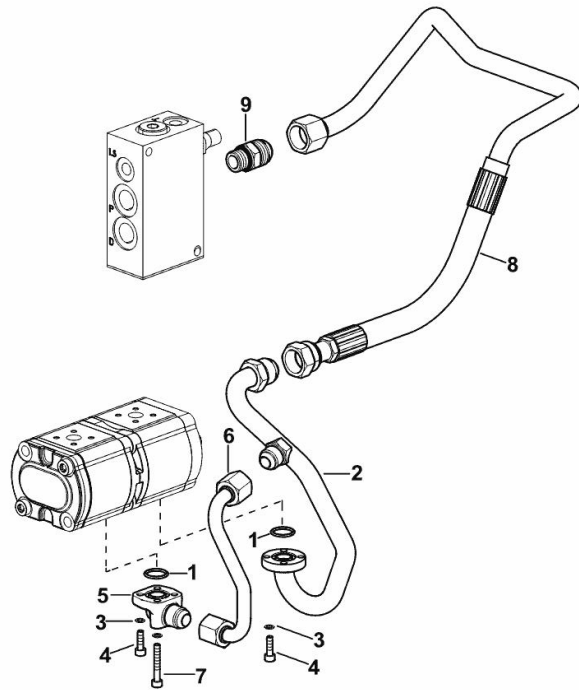
FRONT SUSPENSION DELIVERY LINE

Fig.	P/n	QTY	Name
------	-----	-----	------

Notes:

- 60 LT [5120 -> ZKDBA202W0TD20001]

1	2.1531.052.0	2	oil seal 20.29 x 2.62
2	0.019.1172.3	1	tube
3	2.1480.012.2	8	washer 6, d128
4	2.0312.106.2	6	screw m 6 p.1 x 20
5	0.008.9626.0	1	pipe fitting
6	0.019.1173.3	1	tube
7	2.0312.114.2	2	screw m 6 p.1x40
8	0.020.2663.3	1	tube
9	2.3249.158.2	1	pipe fitting



9_AG982_49_0-A-001

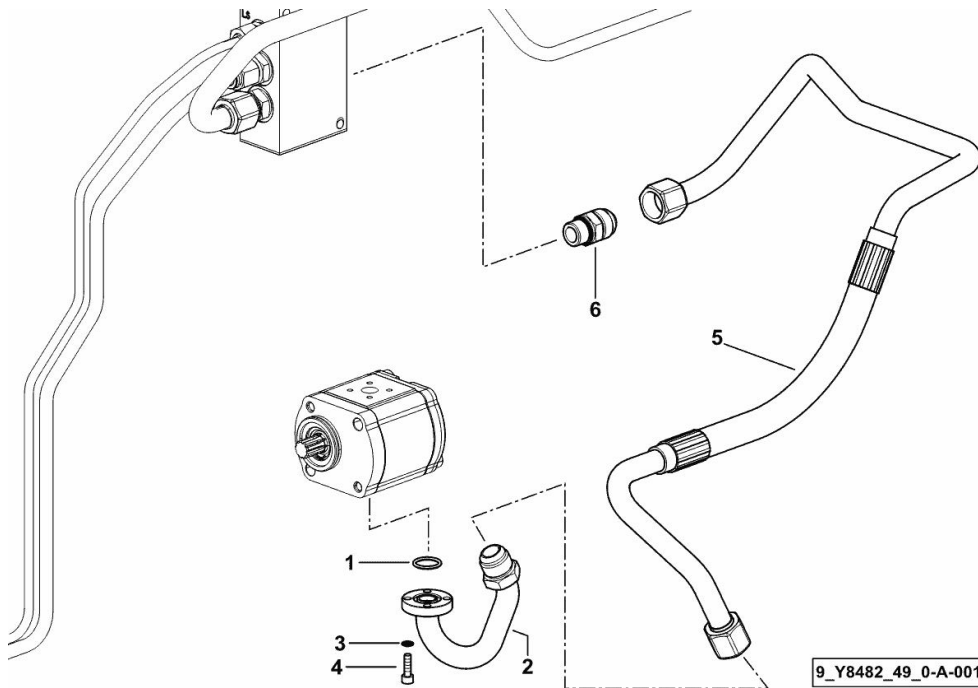
FRONT SUSPENSION DELIVERY LINE

Fig.	P/n	QTY	Name
------	-----	-----	------

Notes:

- 60 LT ECO [5120 -> ZKDBA202W0TD20001]

1	2.1531.052.0	1	oil seal 20.29 x 2.62
2	0.015.1442.3	1	tube
3	2.1480.012.2	4	washer 6, d128
4	2.0312.106.2	4	screw m 6 p.1 x 20
5	0.019.1206.3	1	tube
6	2.3249.158.2	1	pipe fitting



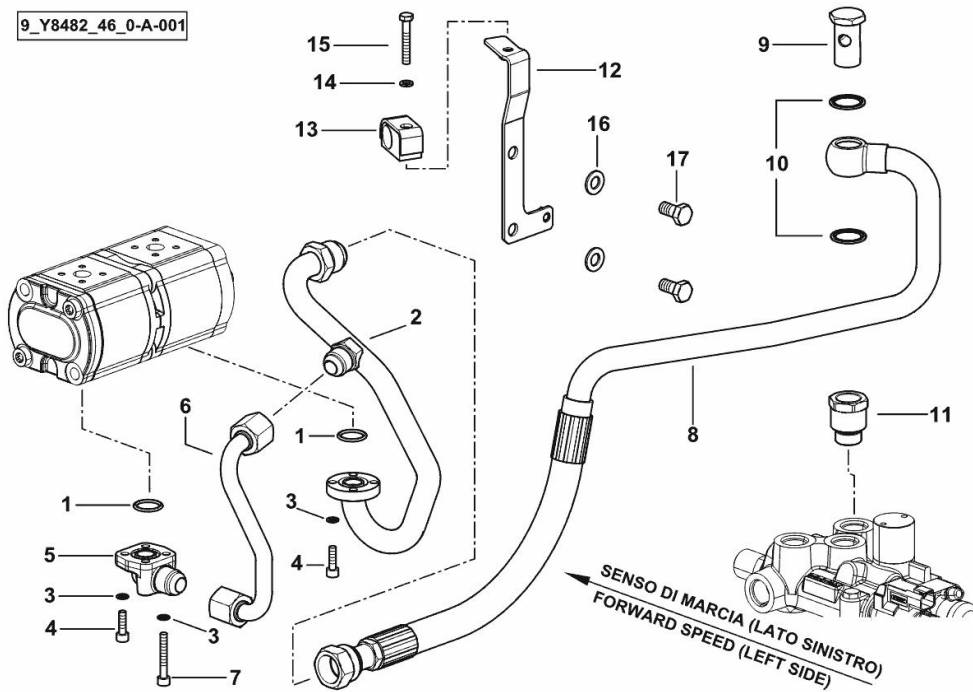
SYSTEM FROM HYDRAULIC PUMP TO HYDRAULIC BRAKES

Fig.	P/n	QTY	Name
------	-----	-----	------

Notes:

- 60 LT [5120 -> ZKDBA202W0TD20001]

9_Y8482_46_0-A-001



1	2.1531.052.0	2	oil seal 20.29 x 2.62
2	0.019.1172.3	1	tube
3	2.1480.012.2	8	washer 6, d128
4	2.0312.106.2	6	screw m 6 p.1 x 20
5	0.008.9626.0	1	pipe fitting
6	0.019.1173.3	1	tube
7	2.0312.114.2	2	screw m 6 p.1x40
8	0.019.3768.3	1	tube
9	2.3335.009.2	1	pipe union m 22 p.1.5 x 39
10	2.1561.112.0	2	gasket Ø 22 -B-
11	2.3249.465.2	1	pipe fitting m 22 p.1.5
12	0.019.8951.3	1	bracket
13	2.3320.111.0	1	terminal Ø 20
14	2.1470.002.2	1	lock washer 6
15	2.0112.015.2	1	screw m 6 p.1x40
16	2.1475.003.2	2	washer 10
17	2.0113.307.2	2	screw m 10 p 1.5 x 20

SYSTEM FROM HYDRAULIC PUMP TO HYDRAULIC BRAKES

9_Y8282_46_0-A-001

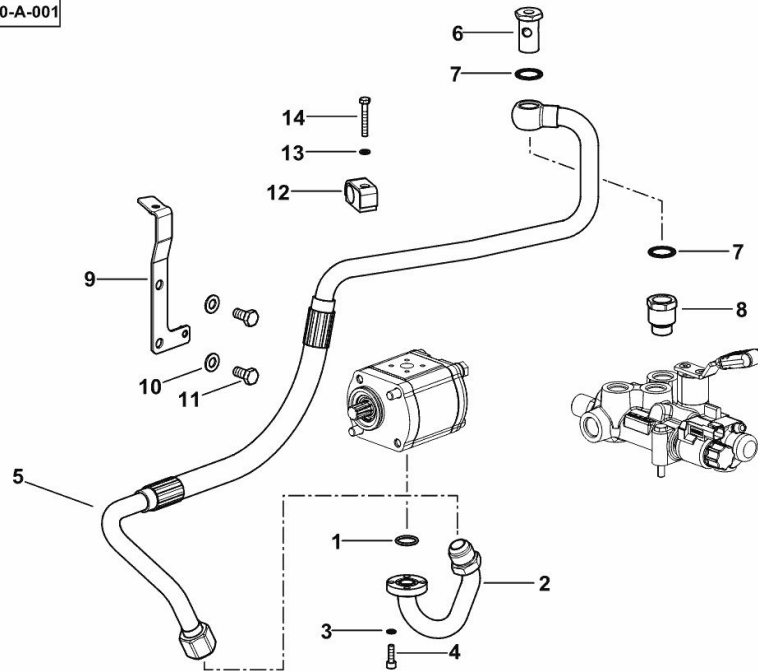


Fig.	P/n	QTY	Name
------	-----	-----	------

Notes:

- 90 LT [5120 -> ZKDBA202W0TD20001]

1	2.1531.052.0	1	oil seal 20.29 x 2.62
2	0.015.1442.3	1	tube
3	2.1480.012.2	4	washer 6, d128
4	2.0312.106.2	4	screw m 6 p.1 x 20
5	0.017.8368.3	1	tube
6	2.3335.009.2	1	pipe union m 22 p.1.5 x 39
7	2.1561.112.0	2	gasket Ø 22 -B-
8	2.3249.465.2	1	pipe fitting m 22 p.1.5
9	0.019.8951.3	1	bracket
10	2.1475.003.2	2	washer 10
11	2.0112.307.2	2	screw m 10 p.1.5 x 20
12	2.3320.111.0	1	terminal Ø 20
13	2.1470.002.2	1	lock washer 6
14	2.0112.015.2	1	screw m 6 p.1x40

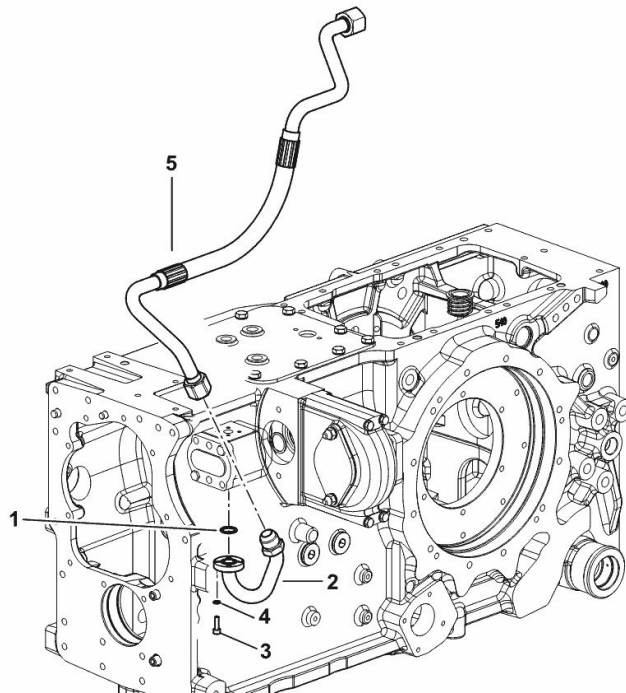
PIPES FROM HYDRAULIC PUMP TO AUXILIARY CONTROL VALVE

Fig.	P/n	QTY	Name
------	-----	-----	------

Notes:

- FOR TYPES WITHOUT HYDRAULIC TRAILER BRAKING [5120 -> ZKDBA202W0TD20001]

1	2.1531.052.0	1	oil seal 20.29 x 2.62
2	0.015.1442.3	1	tube
3	2.1480.012.2	4	washer 6, d128
4	2.0312.106.2	4	screw m 6 p.1 x 20
5	0.017.8342.3	1	tube



9_R8882_42_0-A-001

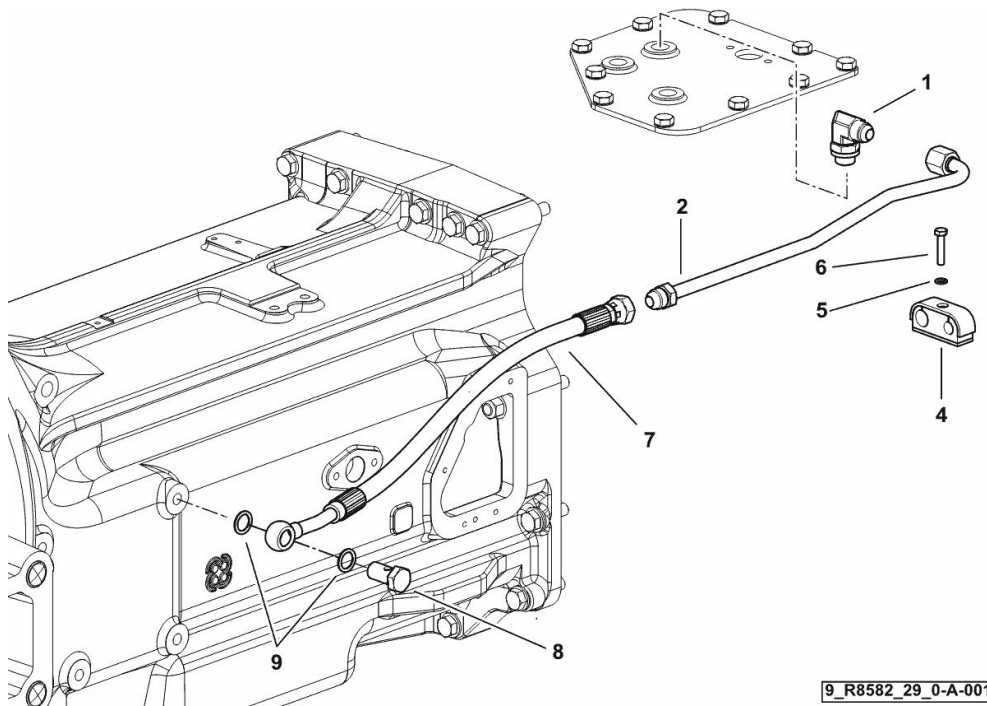
GEARBOX BREATHER SYSTEM

Fig.	P/n	QTY	Name
------	-----	-----	------

Notes:

[5120 -> ZKDBA202W0TD20001]

1	2.3264.012.2	1	pipe fitting m 18 p.1.5
2	0.017.5722.3	1	tube
4	2.3320.213.0	1	collar Ø 12/16
5	2.1470.002.2	1	lock washer 6
6	2.0112.011.2	1	screw m 6 p.1x30
7	0.015.2326.3	1	tube
8	2.3332.005.2	1	pipe fitting m 16 p.1.5
9	2.1560.012.0	2	gasket 16.2 x 22



9_R8582_29_0-A-001

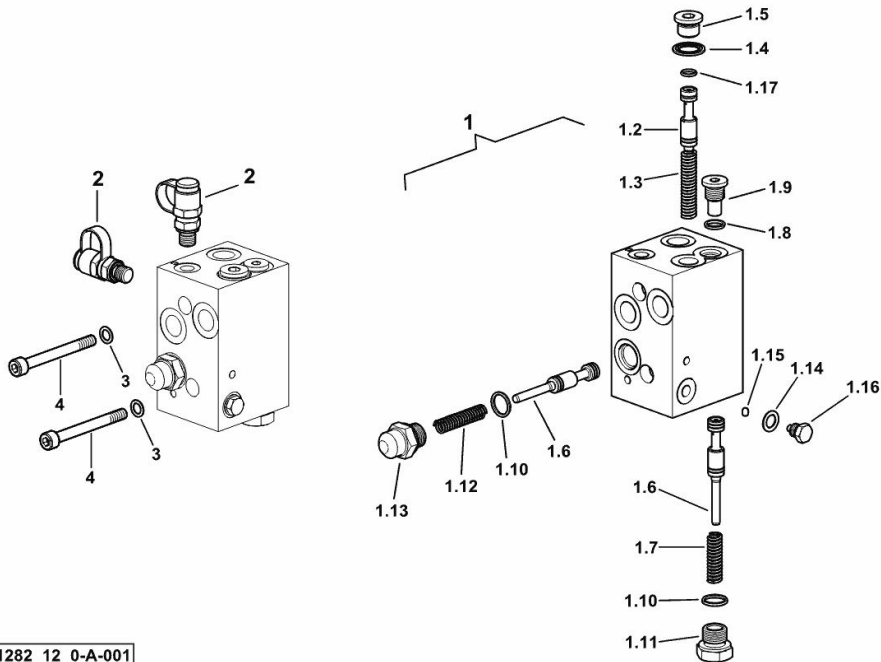
REDUCE AND OLD VALVE

Fig.	P/n	QTY	Name
------	-----	-----	------

Notes:

[5120 -> ZKDBA202W0TD20001]

1	0.015.0001.4/10	1	valve
1.2	0.015.0236.0	1	slider
1.3	2.4019.431.1/30	1	spring 6.9x11.3x2.2x64
1.4	2.1561.108.0	1	oil seal 16
1.5	2.3120.010.4	1	plug m 16 p.1.5
1.6	0.015.0028.0	2	slider
1.7	2.4019.770.1	1	spring
1.8	2.1539.250.0	1	ring 11.3x2.2
1.9	2.3139.021.2	1	plug m 14
1.10	2.1539.251.0	2	ring 15.3x2.2
1.11	2.3199.331.2	1	plug m 18
1.12	2.4019.428.1	1	spring 10.4x7.2x1.6
1.13	2.3199.330.2	1	plug m 18
1.14	2.1560.006.0	1	gasket 10.2 x 16
1.15	2.2810.002.0	1	ball mm 6.350
1.16	2.3199.252.2	1	plug m 10 p.1.5
1.17	2.1531.016.0	1	ring 8.74 x 1.78
2	2.3729.696.0	2	socket
3	2.1480.014.2	2	washer 8
4	2.0312.221.2	2	screw m 8 p.1.25x75



9_H1282_12_0-A-001

PRESSURE REGULATION SYSTEM

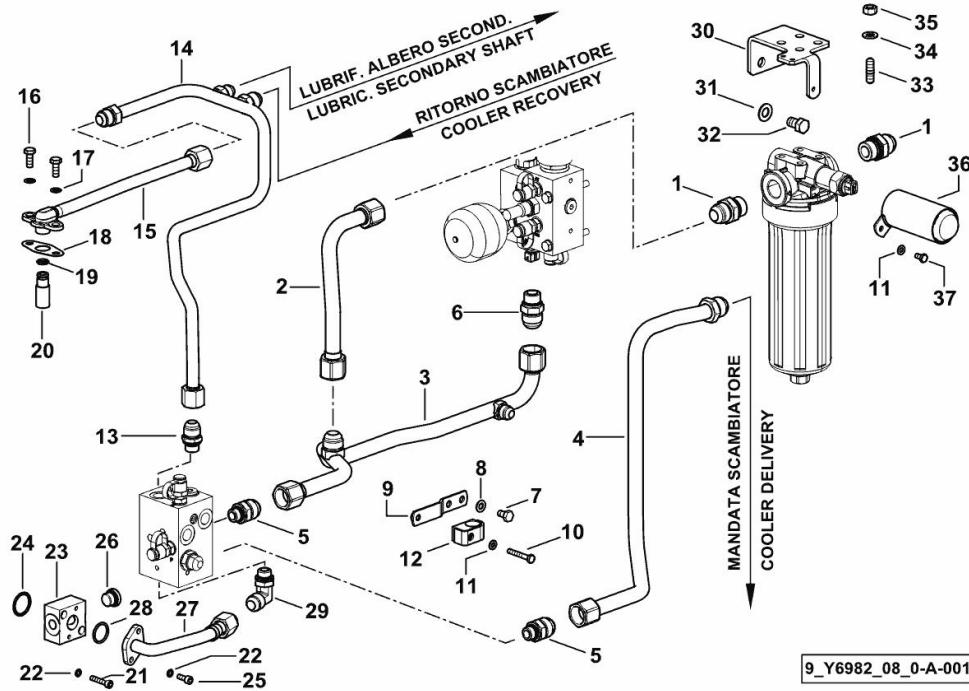


Fig.	P/n	QTY	Name
------	-----	-----	------

Notes:

[5120 -> ZKDBA202W0TD20001]

1	2.3249.100.2	2	pipe fitting M/M 1-16JIC-G3/4
2	0.019.1261.3	1	tube
3	0.019.0940.3	1	tube
4	0.019.0942.3	1	tube
5	2.3249.148.2	2	pipe fitting m 18 - 1/16" JIC
6	2.3249.158.2	1	pipe fitting
7	2.0112.204.2	2	screw m 8 p.1.25x14
8	2.1310.004.2	2	flat washer 8.4x17
9	0.019.0948.3	1	bracket
10	2.0112.015.2	1	screw m 6 p.1x40
11	2.1310.002.2	2	flat washer 6.4x12.5
12	2.3320.111.0	1	terminal Ø 20
13	2.3249.141.2	1	pipe fitting 7/8 JIC-M18
14	0.019.0952.3/10	1	tube
15	0.018.6217.3	1	tube
16	2.0112.207.2	2	screw m 8 p 1.25 x 20
17	2.1560.004.0	2	copper gasket 8.2 x 14
18	0.052.1558.0/10	1	gasket
19	2.1531.024.0	1	oil seal 10.77x2.62
20	0.008.3750.0	1	tube
21	2.0312.110.2	2	screw
22	2.1480.012.2	4	washer 6, d128
23	0.019.0946.0	1	small block
24	2.1532.075.0	1	ring
25	2.0312.104.2	2	screw m 6 p.1 x 16
26	04454782	1	plug m 18 p.1.5
27	0.019.0945.3/10	1	tube
28	2.1531.062.0	1	oil seal 23.81 x 2.62
29	2.3264.018.2	1	pipe fitting m 18 p.1.5
30	0.019.1058.0	1	bracket
31	2.1475.004.2	2	spring washer 12
32	2.0112.407.2	2	screw m 12 p.1.75 x 20
33	2.0432.153.7	4	stud bolt m 10 p.1.5 / p.1.25 x 20
34	2.1310.006.2	4	flat washer 10.5x21
35	2.1011.421.2	4	nut m 10 p.1.25
36	0.019.4482.2	1	tube
37	2.0112.003.2	1	screw m 6 p.1 x 12

PRESSURE REGULATION SYSTEM H-M-L

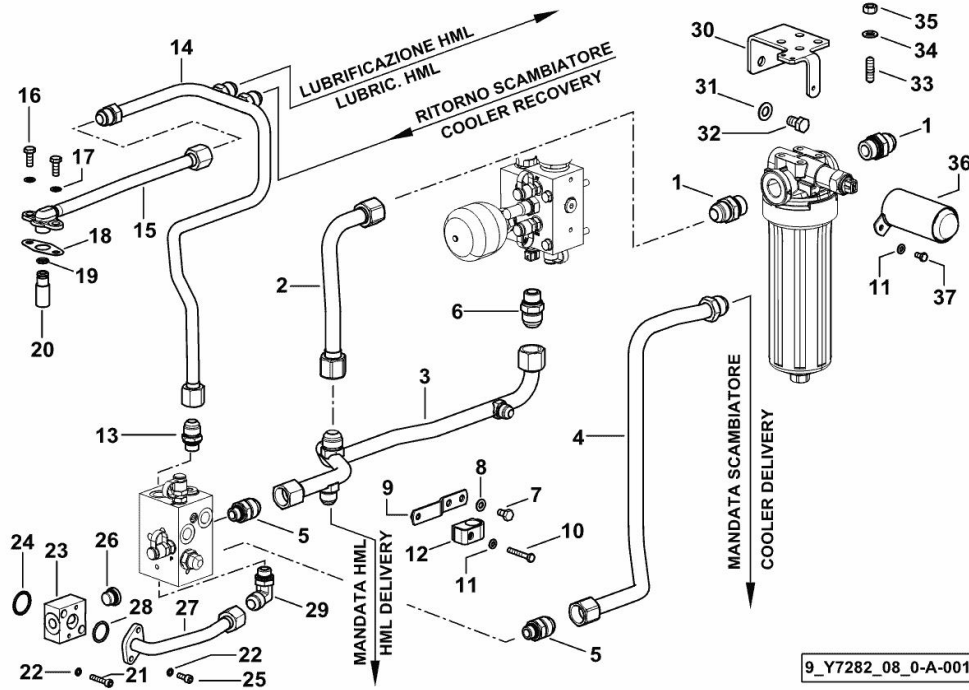


Fig.	P/n	QTY	Name
------	-----	-----	------

Notes:

(GEARSHIFT) [5120 -> ZKDBA202W0TD20001]

1	2.3249.100.2	2	pipe fitting M/M 1-16JIC-G3/4
2	0.019.1261.3	1	tube
3	0.020.0636.3	1	tube
4	0.019.0942.3	1	tube
5	2.3249.148.2	2	pipe fitting m 18 - 1/16" JIC
6	2.3249.158.2	1	pipe fitting
7	2.0112.204.2	2	screw m 8 p.1.25x14
8	2.1310.004.2	2	flat washer 8.4x17
9	0.019.0948.3	1	bracket
10	2.0112.015.2	1	screw m 6 p.1x40
11	2.1310.002.2	2	flat washer 6.4x12.5
12	2.3320.111.0	1	terminal Ø 20
13	2.3249.141.2	1	pipe fitting 7/8 JIC-M18
14	0.019.1008.3/10	1	tube
15	0.018.6217.3	1	tube
16	2.0112.207.2	2	screw m 8 p 1.25 x 20
17	2.1560.004.0	2	copper gasket 8.2 x 14
18	0.052.1558.0/10	1	gasket
19	2.1531.024.0	1	oil seal 10.77x2.62
20	0.008.3750.0	1	tube
21	2.0312.110.2	2	screw
22	2.1480.012.2	4	washer 6, d128
23	0.019.0946.0	1	small block
24	2.1532.075.0	1	ring
25	2.0312.104.2	2	screw m 6 p.1 x 16
26	04454782	1	plug m 18 p.1.5
27	0.019.0945.3/10	1	tube
28	2.1531.062.0	1	oil seal 23.81 x 2.62
29	2.3264.018.2	1	pipe fitting m 18 p.1.5
30	0.019.1058.0	1	bracket
31	2.1475.004.2	2	spring washer 12
32	2.0112.407.2	2	screw m 12 p.1.75 x 20
33	2.0432.153.7	4	stud bolt m 10 p.1.5 / p.1.25 x 20
34	2.1310.006.2	4	flat washer 10.5x21
35	2.1011.421.2	4	nut m 10 p.1.25
36	0.019.4482.2	1	tube
37	2.0112.003.2	1	screw m 6 p.1 x 12

Buy Now



Our support email:

ebooklibonline@outlook.com