

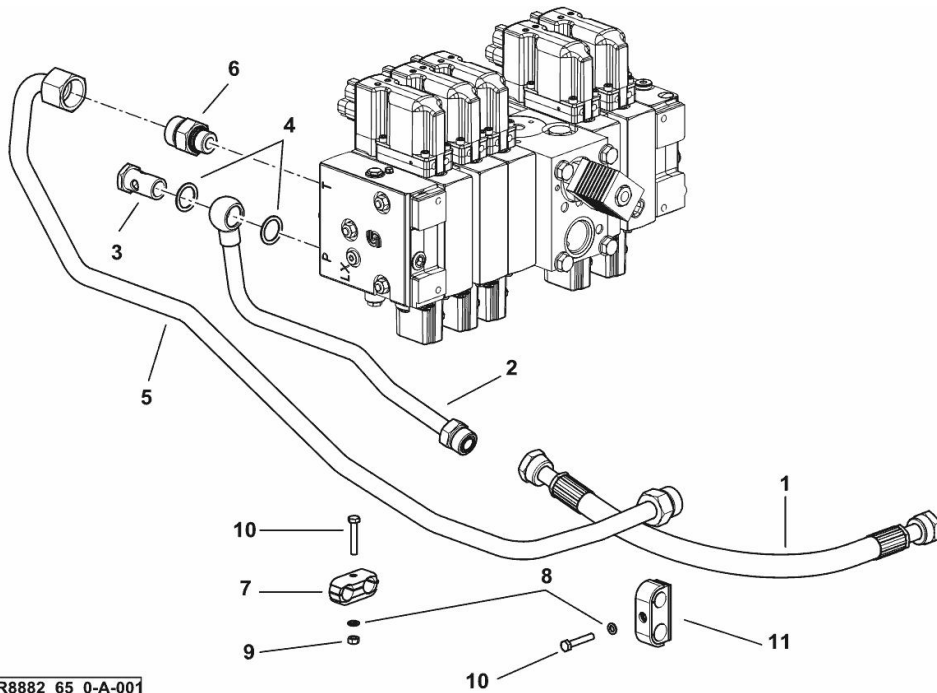
HYDRAULIC SYSTEM FOR SECOND PUMP

Fig.	P/n	QTY	Name
------	-----	-----	------

Notes:

- FOR TYPES WITH ELECTRICAL REMOTE VALVE CONTROL [5120 -> ZKDY7602W0TD10001]

1	0.017.8992.3	1	tube
2	0.017.8991.3	1	tube
3	2.3335.009.2	1	pipe union m 22 p.1.5 x 39
4	2.1560.018.0	2	gasket 22.2 x 29
5	0.017.8993.3	1	tube
6	2.3275.016.0	1	pipe fitting m 22
7	2.3321.020.0	1	collar Ø 16/16
8	2.1470.002.2	2	lock washer 6
9	2.1011.103.2	1	nut m 6 p.1
10	2.0112.013.2	2	screw m 6 p.1 x 35
11	2.3320.217.0	1	collar Ø 16/18



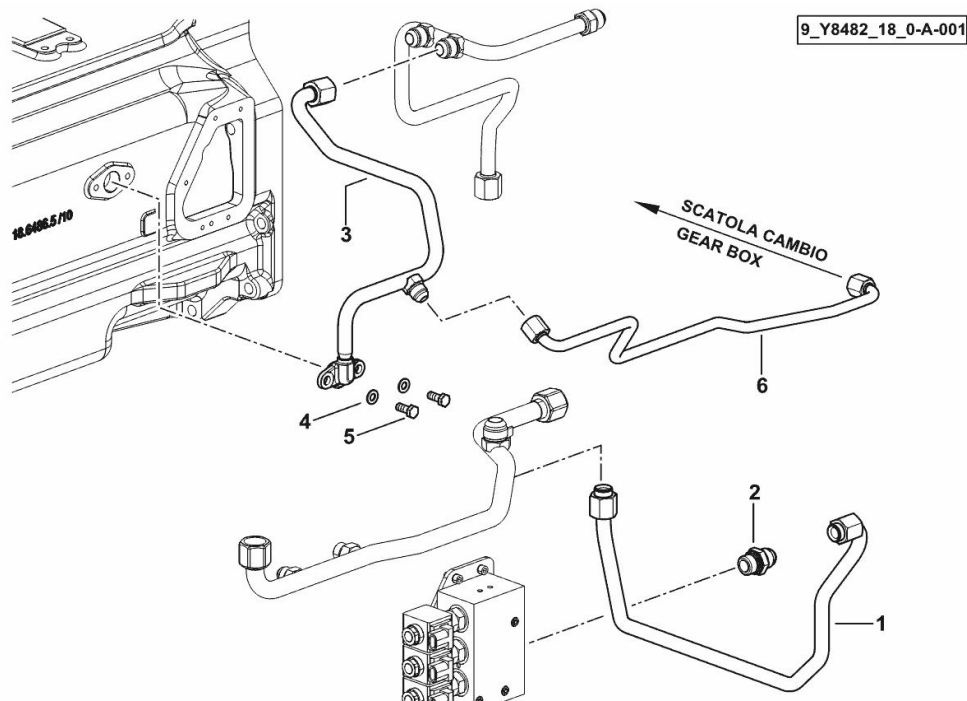
9_R8882_65_0-A-001

HYDRAULIC SYSTEM PARTS KIT H-M-L

Fig.	P/n	QTY	Name
------	-----	-----	------

Notes:

- POWERSHIFT [5120 -> ZKDY7602W0TD10001]



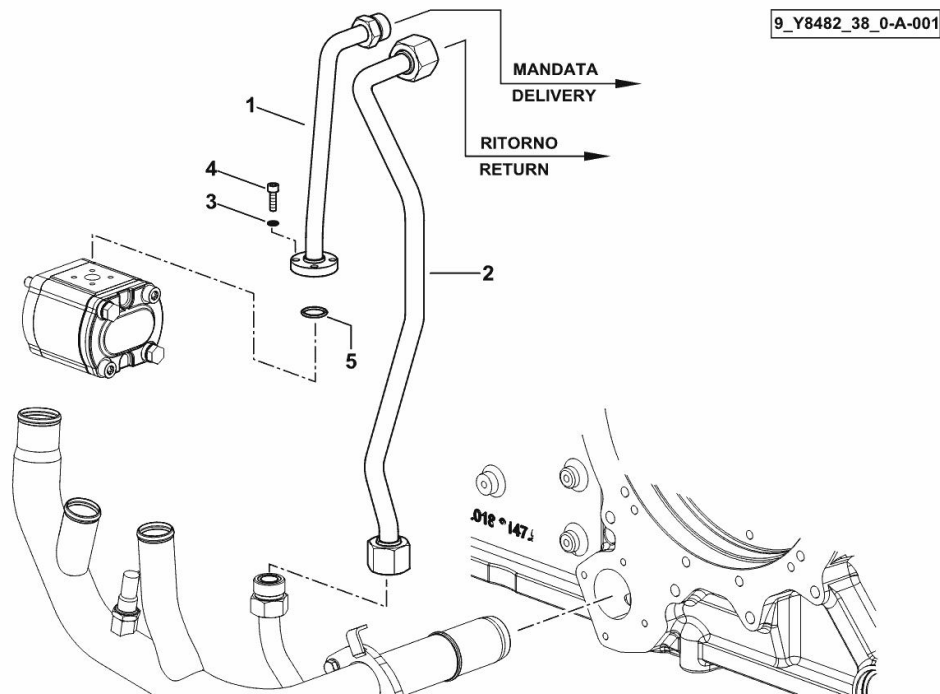
1	0.019.3782.3	1	tube
2	2.3249.173.2	1	pipe fitting M/M 7/8 JIC-M22
3	0.019.3783.3/10	1	tube
4	2.1310.004.2	2	flat washer 8.4x17
5	2.0112.207.2	2	screw m 8 p 1.25 x 20
6	0.020.0667.3	1	tube

HYDRAULIC SYSTEM PARTS KIT

Fig.	P/n	QTY	Name
------	-----	-----	------

Notes:

- FOR TYPES WITH ELECTRICAL REMOTE VALVE CONTROL [5120 -> ZKDY7602W0TD10001]



1	0.017.8994.3	1	tube - DELIVERY
2	0.019.5678.3	1	tube - RETURN
3	2.1480.012.2	4	washer 6, d128
4	2.0312.106.2	4	screw m 6 p.1 x 20
5	2.1531.052.0	1	oil seal 20.29 x 2.62

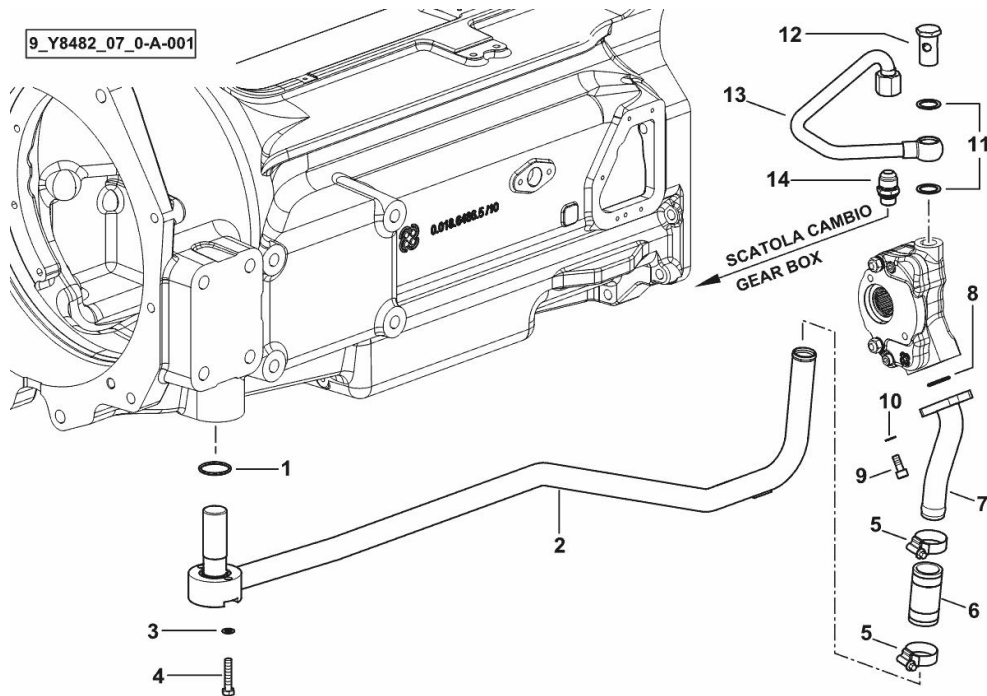
OIL TRANSFER PUMP HYDRAULIC SYSTEM

Fig.	P/n	QTY	Name
------	-----	-----	------

Notes:

[5120 -> ZKDY7602W0TD10001]

1	2.1531.091.0	1	oil seal 34.60 x 2.62
2	0.018.6201.3	1	tube
3	2.1470.004.2	2	lock washer 8
4	2.0112.215.2	2	screw m 8 p.1.25 x 40
5	2.6851.004.0	2	clamp Ø 32/50
6	2.3213.228.0	1	sleeve
7	0.015.6617.3	1	tube
8	2.1531.062.0	1	oil seal 23.81 x 2.62
9	2.0312.206.2	2	screw m 8 p 1.25 x 20
10	2.1480.014.2	2	washer 8
11	2.1560.018.0	2	gasket 22.2 x 29
12	2.3335.009.2	1	pipe union m 22 p.1.5 x 39
13	0.015.1335.3	1	tube
14	2.3249.141.2	1	pipe fitting 7/8 JIC-M18



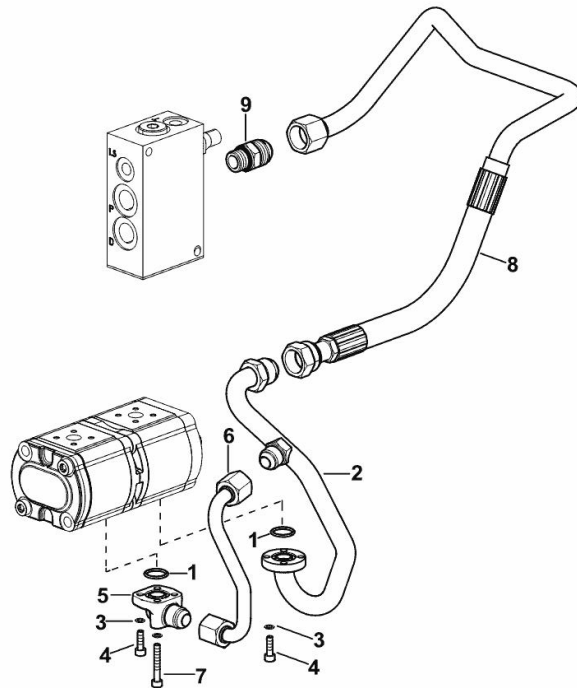
FRONT SUSPENSION DELIVERY LINE

Fig.	P/n	QTY	Name
------	-----	-----	------

Notes:

- 60 LT [5120 -> ZKDY7602W0TD10001]

1	2.1531.052.0	2	oil seal 20.29 x 2.62
2	0.019.1172.3	1	tube
3	2.1480.012.2	8	washer 6, d128
4	2.0312.106.2	6	screw m 6 p.1 x 20
5	0.008.9626.0	1	pipe fitting
6	0.019.1173.3	1	tube
7	2.0312.114.2	2	screw m 6 p.1x40
8	0.020.2663.3	1	tube
9	2.3249.158.2	1	pipe fitting



9_AG982_49_0-A-001

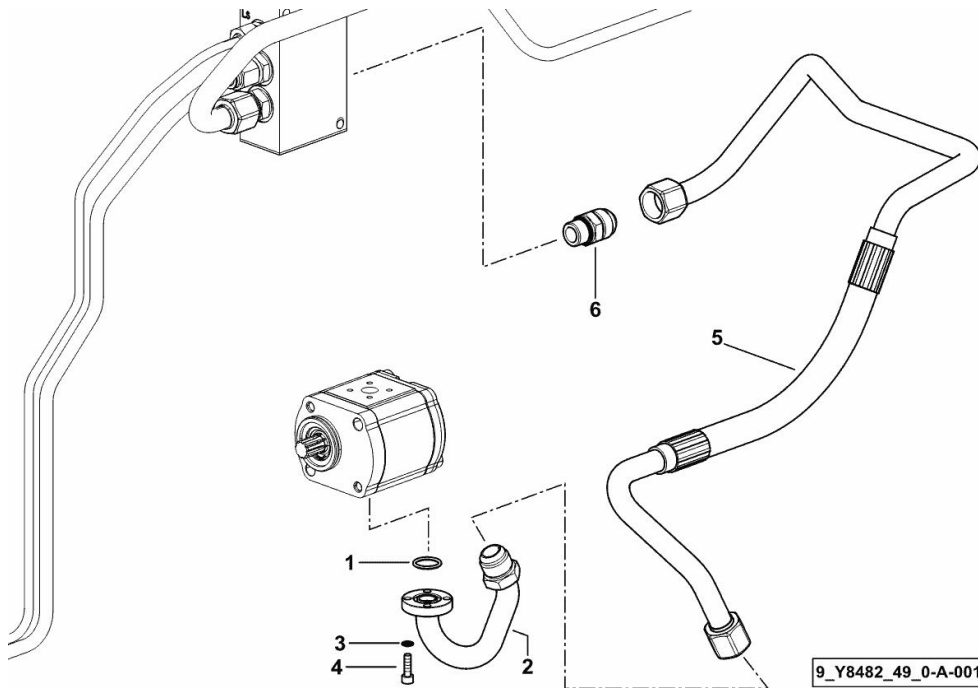
FRONT SUSPENSION DELIVERY LINE

Fig.	P/n	QTY	Name
------	-----	-----	------

Notes:

- 60 LT ECO [5120 -> ZKDY7602W0TD10001]

1	2.1531.052.0	1	oil seal 20.29 x 2.62
2	0.015.1442.3	1	tube
3	2.1480.012.2	4	washer 6, d128
4	2.0312.106.2	4	screw m 6 p.1 x 20
5	0.019.1206.3	1	tube
6	2.3249.158.2	1	pipe fitting



9_Y8482_49_0-A-001

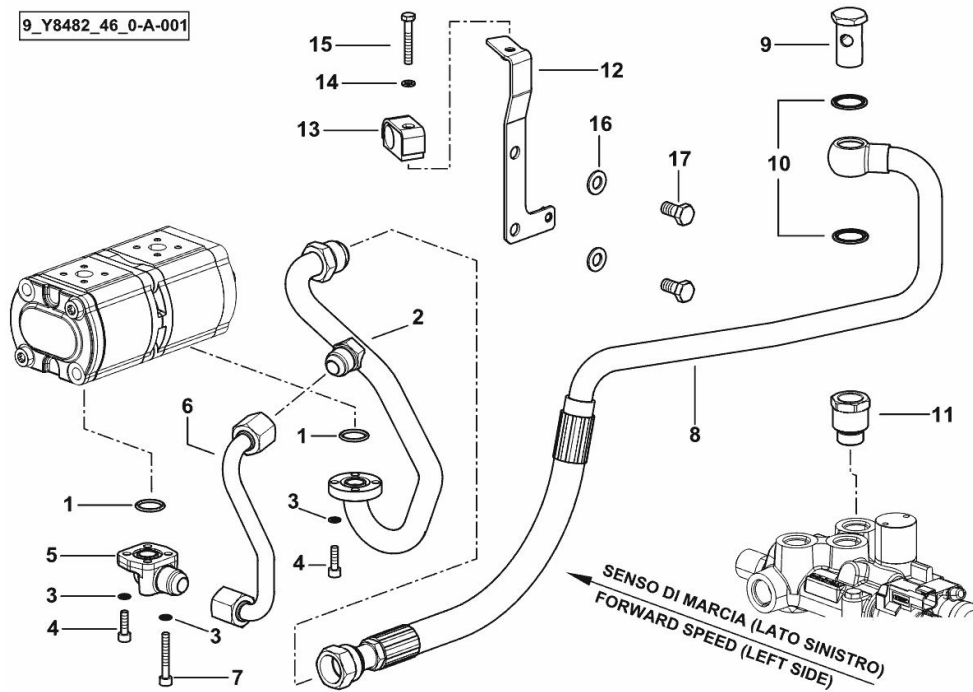
SYSTEM FROM HYDRAULIC PUMP TO HYDRAULIC BRAKES

Fig.	P/n	QTY	Name
------	-----	-----	------

Notes:

- 60 LT [5120 -> ZKDY7602W0TD10001]

9_Y8482_46_0-A-001



1	2.1531.052.0	2	oil seal 20.29 x 2.62
2	0.019.1172.3	1	tube
3	2.1480.012.2	8	washer 6, d128
4	2.0312.106.2	6	screw m 6 p.1 x 20
5	0.008.9626.0	1	pipe fitting
6	0.019.1173.3	1	tube
7	2.0312.114.2	2	screw m 6 p.1x40
8	0.019.3768.3	1	tube
9	2.3335.009.2	1	pipe union m 22 p.1.5 x 39
10	2.1561.112.0	2	gasket Ø 22 -B-
11	2.3249.465.2	1	pipe fitting m 22 p.1.5
12	0.019.8951.3	1	bracket
13	2.3320.111.0	1	terminal Ø 20
14	2.1470.002.2	1	lock washer 6
15	2.0112.015.2	1	screw m 6 p.1x40
16	2.1475.003.2	2	washer 10
17	2.0113.307.2	2	screw m 10 p 1.5 x 20

5120 -> ZKDY7602W0TD10001

Section: H0 - HYDRAULIC AND PNEUMATIC SYSTEM|

Ref: H0.01.24 (1)

SYSTEM FROM HYDRAULIC PUMP TO HYDRAULIC BRAKES

9_Y8282_46_0-A-001

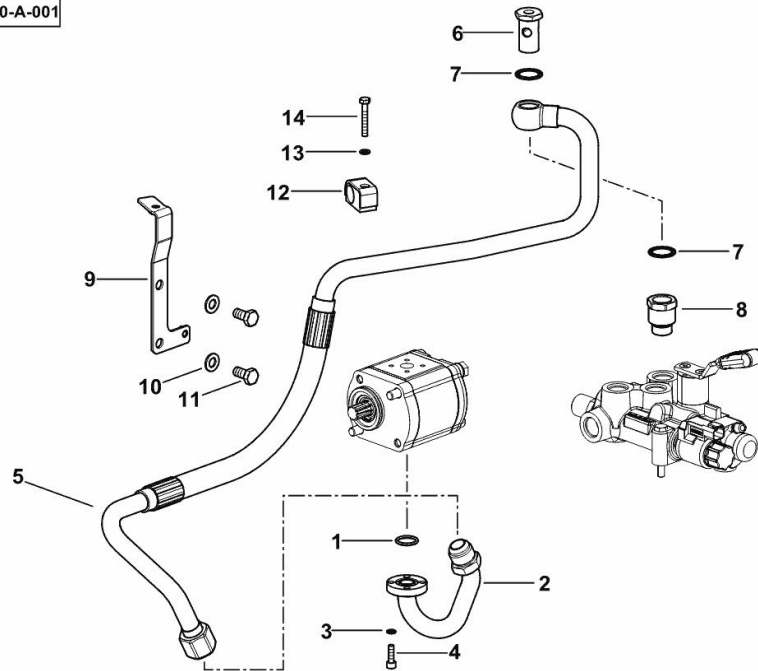


Fig.	P/n	QTY	Name
------	-----	-----	------

Notes:

- 90 LT [5120 -> ZKDY7602W0TD10001]

1	2.1531.052.0	1	oil seal 20.29 x 2.62
2	0.015.1442.3	1	tube
3	2.1480.012.2	4	washer 6, d128
4	2.0312.106.2	4	screw m 6 p.1 x 20
5	0.017.8368.3	1	tube
6	2.3335.009.2	1	pipe union m 22 p.1.5 x 39
7	2.1561.112.0	2	gasket Ø 22 -B-
8	2.3249.465.2	1	pipe fitting m 22 p.1.5
9	0.019.8951.3	1	bracket
10	2.1475.003.2	2	washer 10
11	2.0112.307.2	2	screw m 10 p.1.5 x 20
12	2.3320.111.0	1	terminal Ø 20
13	2.1470.002.2	1	lock washer 6
14	2.0112.015.2	1	screw m 6 p.1x40

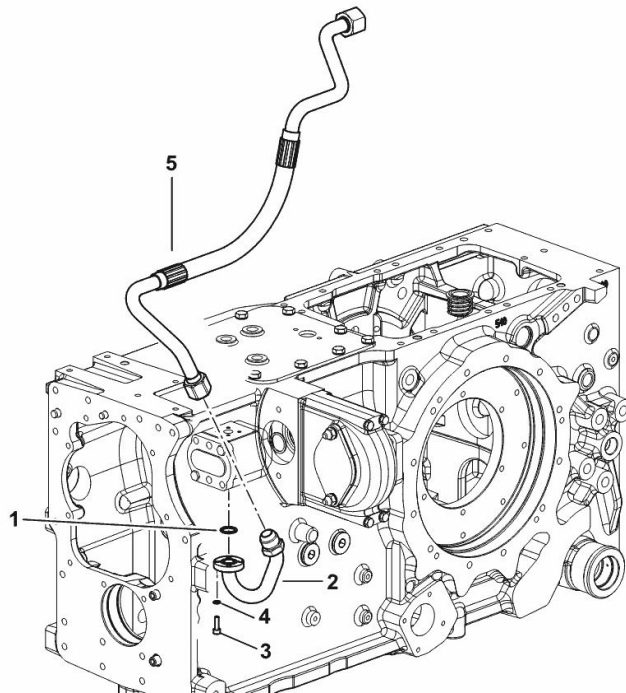
PIPES FROM HYDRAULIC PUMP TO AUXILIARY CONTROL VALVE

Fig.	P/n	QTY	Name
------	-----	-----	------

Notes:

- FOR TYPES WITHOUT HYDRAULIC TRAILER BRAKING [5120 -> ZKDY7602W0TD10001]

1	2.1531.052.0	1	oil seal 20.29 x 2.62
2	0.015.1442.3	1	tube
3	2.1480.012.2	4	washer 6, d128
4	2.0312.106.2	4	screw m 6 p.1 x 20
5	0.017.8342.3	1	tube



9_R8882_42_0-A-001

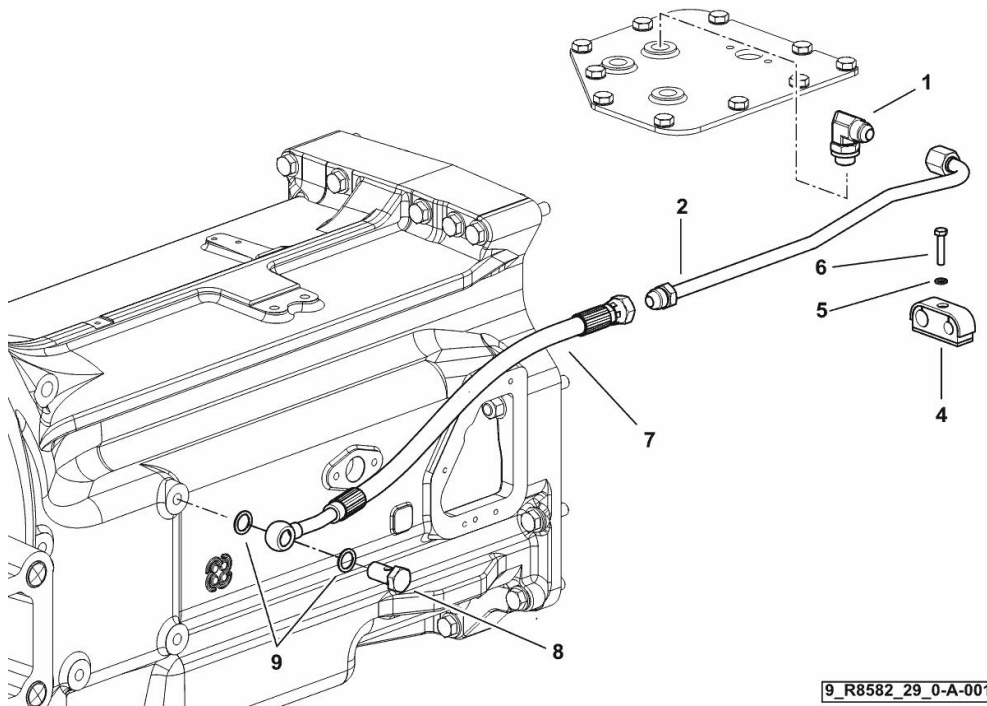
GEARBOX BREATHER SYSTEM

Fig.	P/n	QTY	Name
------	-----	-----	------

Notes:

[5120 -> ZKDY7602W0TD10001]

1	2.3264.012.2	1	pipe fitting m 18 p.1.5
2	0.017.5722.3	1	tube
4	2.3320.213.0	1	collar Ø 12/16
5	2.1470.002.2	1	lock washer 6
6	2.0112.011.2	1	screw m 6 p.1x30
7	0.015.2326.3	1	tube
8	2.3332.005.2	1	pipe fitting m 16 p.1.5
9	2.1560.012.0	2	gasket 16.2 x 22



9_R8582_29_0-A-001

Buy Now



Our support email:

ebooklibonline@outlook.com