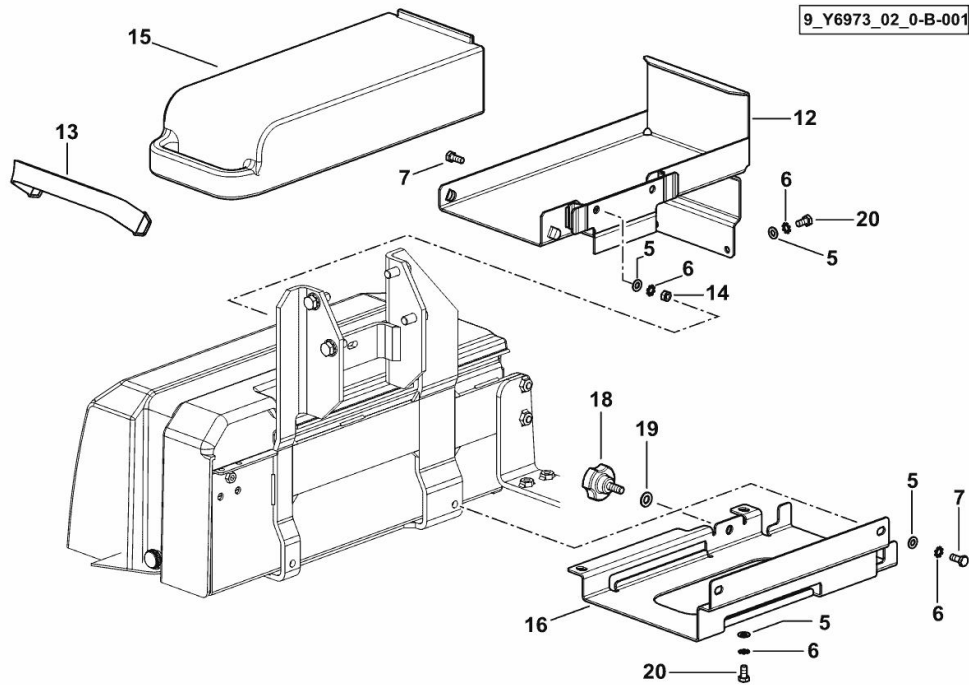


SUPPORT FOR TOOL BOX AND WHEEL CHOCK

Fig.	P/n	QTY	Name
------	-----	-----	------

Notes:
[5130P]

5	2.1310.004.2	17	flat washer 8.4x17
6	2.1470.004.2	14	lock washer 8
7	2.0112.207.2	2	screw m 8 p 1.25 x 20
12	0.019.0539.2/10	1	support
13	0.011.0073.2/10	1	rod
14	2.1011.105.2	2	nut m 8 p.1.25
15	04422635.4	1	toolbox
16	0.019.8903.3/10	1	support
18	04422689	1	knob
19	2.1475.003.2	3	washer 10
20	2.0112.205.2	10	screw m 8 p.1.25 x 16

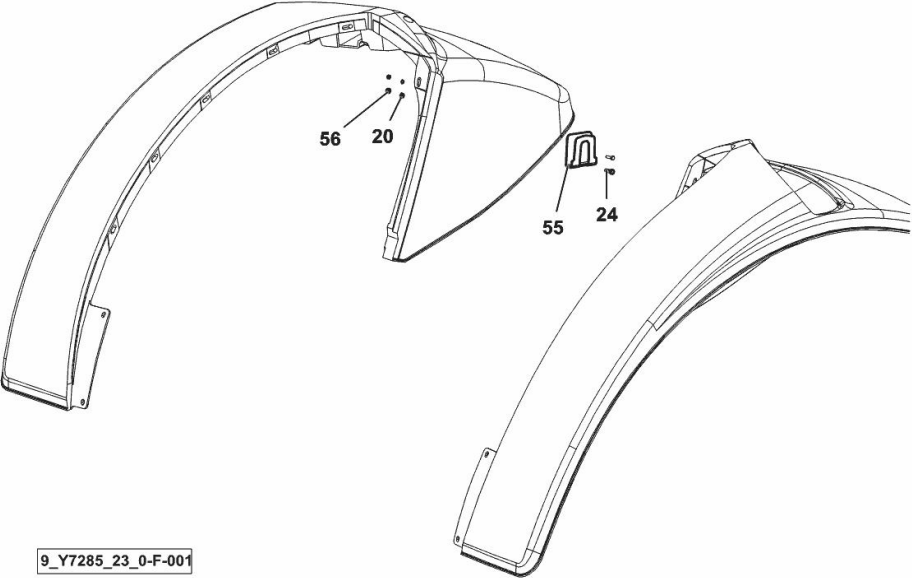


WARNING TRIANGLE HOLDER

Fig.	P/n	QTY	Name
------	-----	-----	------

Notes:
- EXPORT U.S.A. [5130P]

20	2.1310.002.2	4	flat washer 6.4x12.5
24	2.0112.007.2	4	screw m 6 p.1 x 20
55	0.015.0499.0	1	support
56	2.1121.003.2	4	self-locking nut

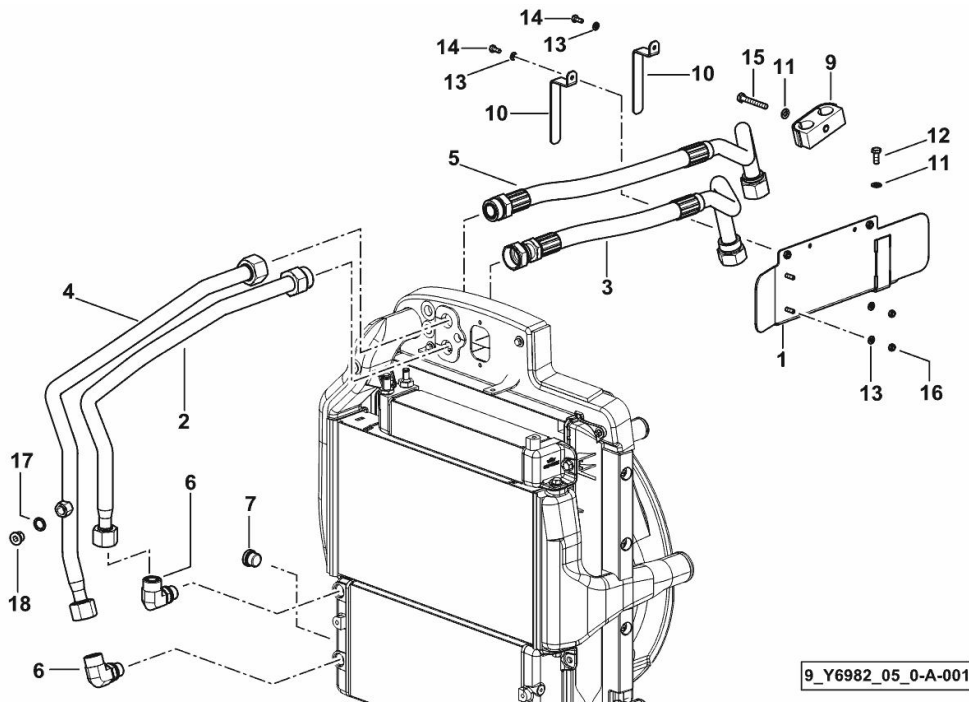


OIL COOLER PIPE

Fig.	P/n	QTY	Name
------	-----	-----	------

Notes:
[5130P]

1	0.019.1193.3	1	channel
2	0.019.1449.3	1	tube - INPUT
3	0.019.1195.3	1	flexible hose - INPUT
4	0.019.1450.3	1	tube - OUTPUT
5	0.019.1196.3	1	flexible hose - OUTPUT
6	2.3273.213.0	2	pipe fitting
7	2.3121.008.2	1	plug
9	2.3329.004.0	1	terminal
10	0.019.1197.0	2	bracket
11	2.1310.004.2	2	flat washer 8.4x17
12	2.0112.207.2	1	screw m 8 p 1.25 x 20
13	2.1310.002.2	4	flat washer 6.4x12.5
14	2.0112.004.2	2	screw m 6 p.1 x 14
15	2.0112.220.2	1	screw m 8 p.1.25x55
16	2.1011.103.2	2	nut m 6 p.1
17	2.1560.012.0	1	gasket 16.2 x 22
18	2.3120.010.4	1	plug m 16 p.1.5

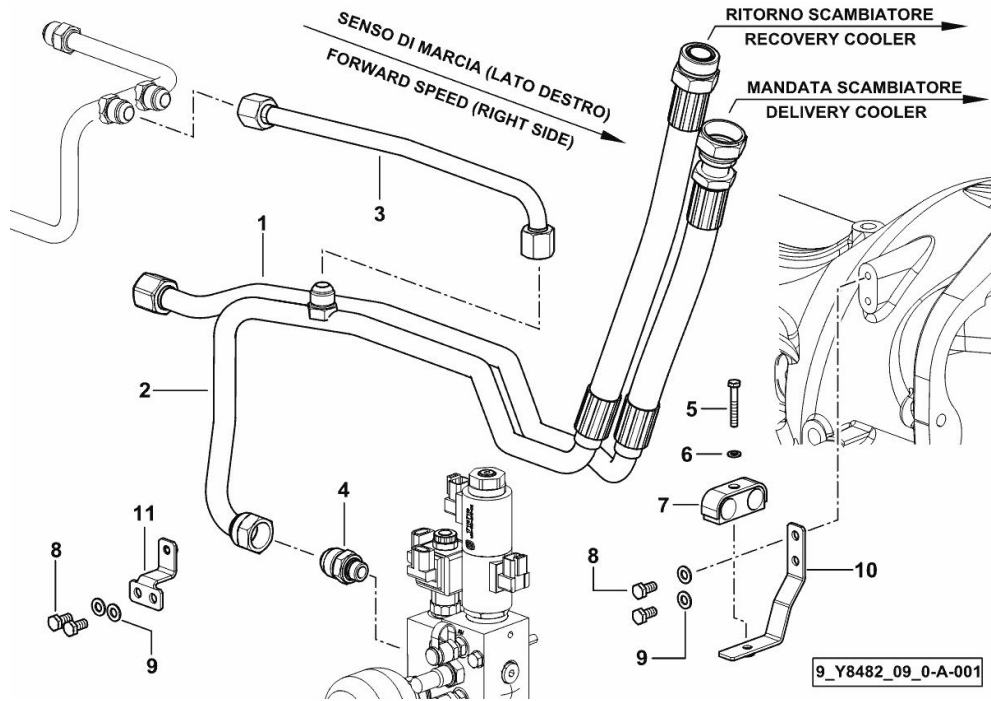


OIL COOLER PIPE

Fig.	P/n	QTY	Name
------	-----	-----	------

Notes:
[5130P]

1	0.019.0956.3	1	tube
2	0.019.0958.3/10	1	tube
3	0.019.1009.3	1	tube
4	2.3249.148.2	1	pipe fitting m 18 - 1/16" JIC
5	2.0112.015.2	1	screw m 6 p.1x40
6	2.1310.002.2	1	flat washer 6.4x12.5
7	2.3320.321.0	1	terminal Ø 20/20
8	2.0112.205.2	4	screw m 8 p.1.25 x 16
9	2.1310.004.2	4	flat washer 8.4x17
10	0.019.0955.3	1	bracket
11	0.019.1060.3	1	bracket



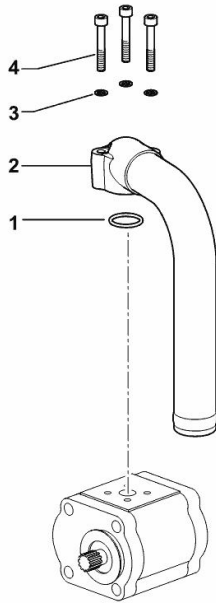
PUMP FILTER SUCTION

Fig.	P/n	QTY	Name
------	-----	-----	------

Notes:

- FOR TYPES WITH MECHANICAL REMOTE VALVE CONTROL [5130P]

1	2.1531.058.0	1	oil seal 22.22x2.62
2	0.015.1265.3	1	tube
3	2.1480.012.2	3	washer 6, d128
4	2.0312.114.2	3	screw m 6 p.1x40



9_H1582_02_0-A-001

PUMP FILTER SUCTION

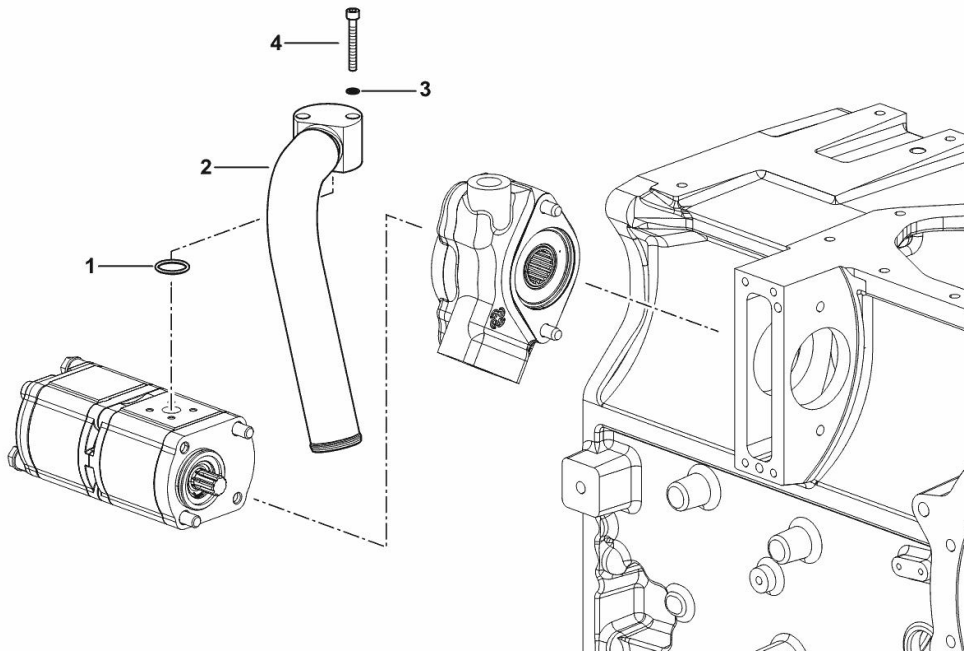
Fig.	P/n	QTY	Name
------	-----	-----	------

Notes:

- FOR TYPES WITH MECHANICAL REMOTE VALVE CONTROL [5130P]

1	2.1531.058.0	1	oil seal 22.22x2.62
2	0.019.0848.3	1	tube
3	2.1480.012.2	2	washer 6, d128
4	2.0312.115.2	2	screw m 6 p.1x45

9_Y8482_01_0-A-001



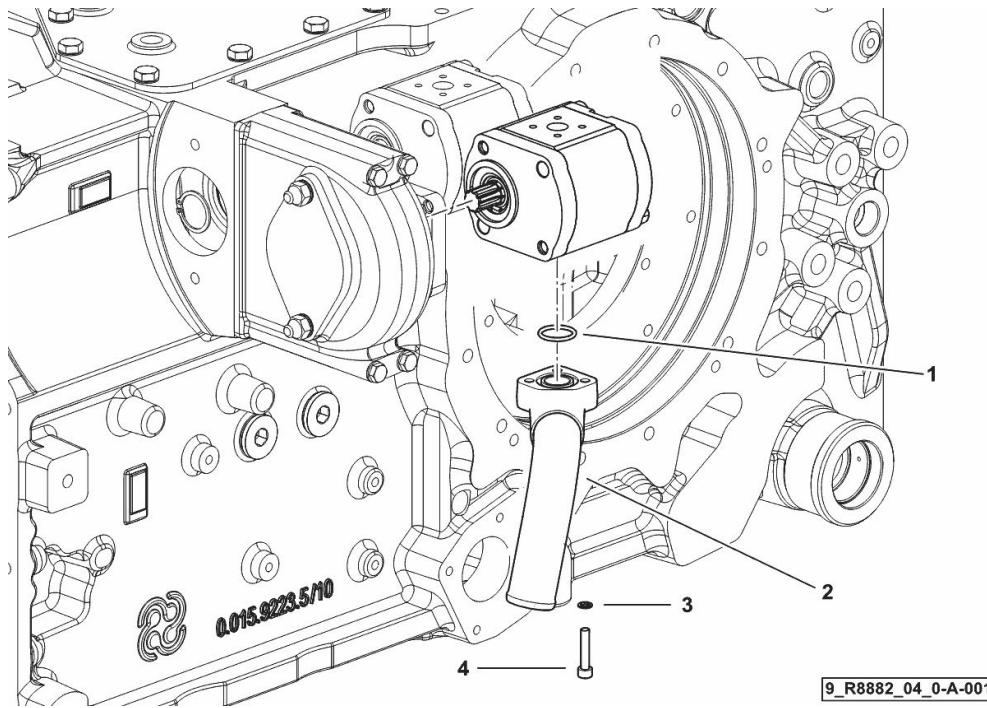
PUMP FILTER SUCTION 14 CC.

Fig.	P/n	QTY	Name
------	-----	-----	------

Notes:

- FOR TYPES WITH 8-WAY REMOTE VALVE WITH FLOW CONTROL [5130P] - FOR TYPES WITH ELECTRICAL REMOTE VALVE CONTROL [5130P]

1	2.1531.058.0	1	oil seal 22.22x2.62
2	0.017.5938.3	1	tube
3	2.1480.012.2	3	washer 6, d128
4	2.0312.110.2	3	screw



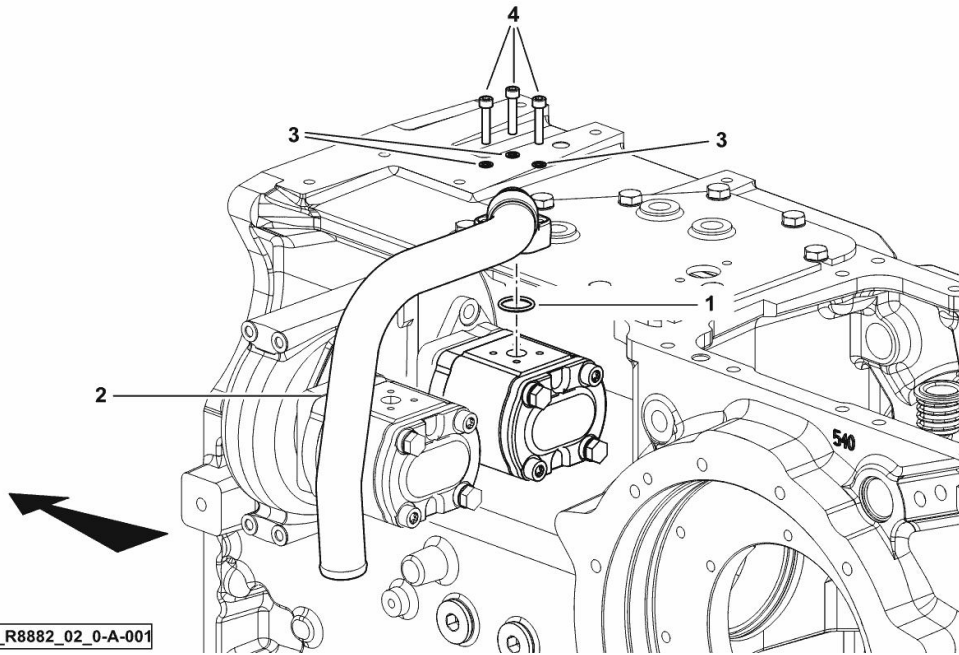
PUMP FILTER SUCTION 16 CC.

Fig.	P/n	QTY	Name
------	-----	-----	------

Notes:

- FOR TYPES WITH 8-WAY REMOTE VALVE WITH FLOW CONTROL [5130P] - FOR TYPES WITH ELECTRICAL REMOTE VALVE CONTROL [5130P]

1	2.1531.058.0	1	oil seal 22.22x2.62
2	0.017.5933.3	1	tube
3	2.1480.012.2	3	washer 6, d128
4	2.0312.110.2	3	screw



9_R8882_02_0-A-001

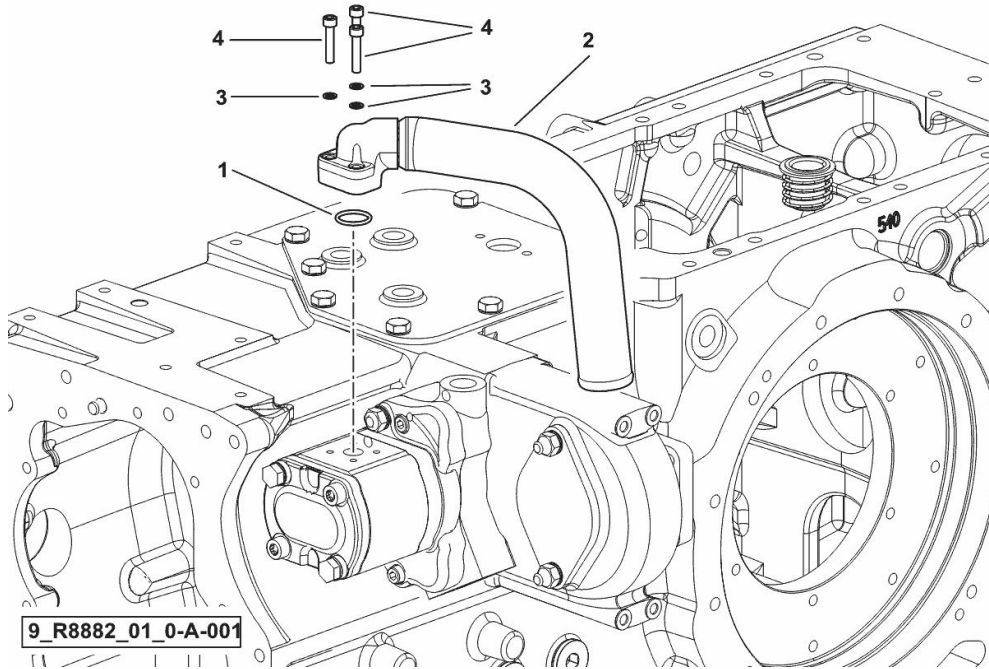
PUMP FILTER SUCTION

Fig.	P/n	QTY	Name
------	-----	-----	------

Notes:

- FOR TYPES WITH 8-WAY REMOTE VALVE WITH FLOW CONTROL [5130P] - FOR TYPES WITH ELECTRICAL REMOTE VALVE CONTROL [5130P]

1	2.1531.058.0	1	oil seal 22.22x2.62
2	0.017.5930.3	1	tube
3	2.1480.012.2	3	washer 6, d128
4	2.0312.110.2	3	screw



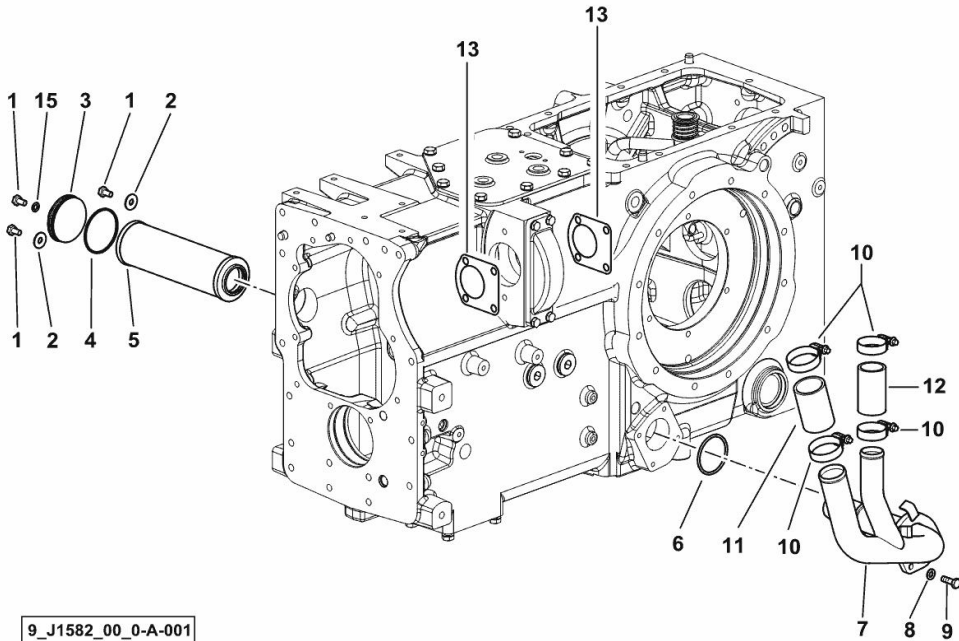
OIL SUCTION

Fig.	P/n	QTY	Name
------	-----	-----	------

Notes:

- FOR TYPES WITH MECHANICAL REMOTE VALVE CONTROL [5130P]

1	2.0112.204.2	3	screw m 8 p.1.25x14
2	2.1312.004.3	2	washer 8,4x24x2
3	0.013.8789.0/10	1	cover
4	2.1530.157.0	1	oil seal 64.77x2.62
5	2.4419.484.0	1	oil filter
6	2.1532.138.0	1	oil seal 55.56x3.53
7	0.015.6599.3	1	tube
8	2.1310.004.2	3	flat washer 8.4x17
9	2.0112.209.2	3	screw m 8 p 1.25 x 25
10	2.6851.004.0	4	clamp Ø 32/50
11	2.3213.240.0	1	sleeve
12	2.3213.234.0	1	sleeve Ø 34, L 70
13	0.9104.250.0/10	2	gasket
15	2.1560.004.0	1	copper gasket 8.2 x 14



9_J1582_00_0-A-001

Buy Now



Our support email:

ebooklibonline@outlook.com