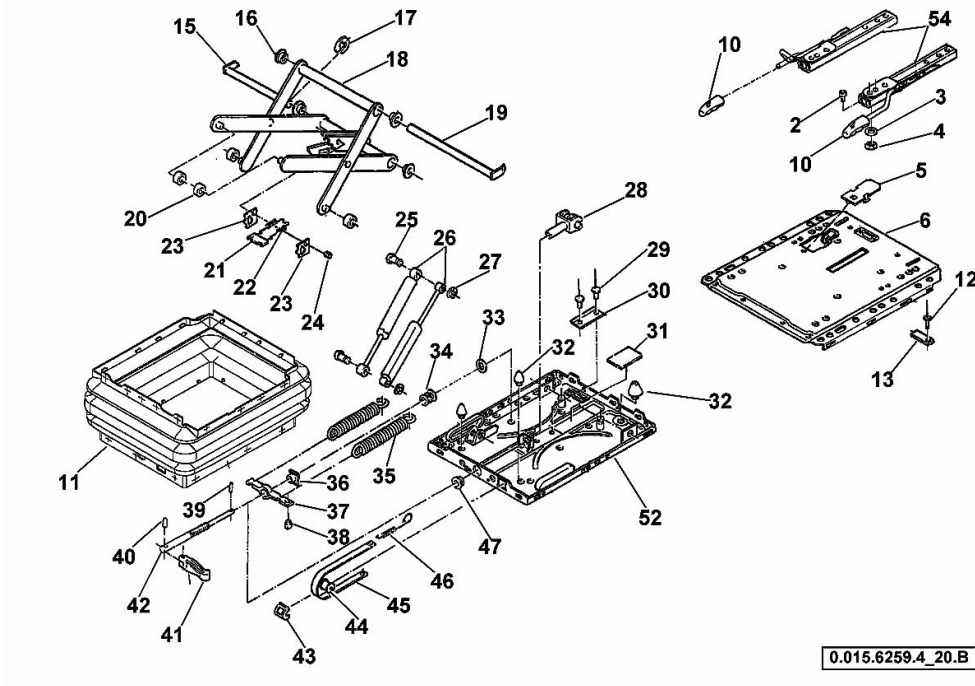


DRIVER'S SEAT MSG 85/722

Fig.	P/n	QTY	Name
2	0.010.2405.0	4	pin m 8 x 16
3	0.010.2945.0	4	washer 8.4
4	0.010.2401.0	4	nut m 8
5	04418336	1	cover
6	0.010.3079.0	1	plate
10	0.010.2943.2	1	knob
11	0.010.3079.1	1	bellows
15	04350897	1	pin
16	04367520	4	bushing
18	0.010.3079.2	1	arm
19	04418337	1	pin
20	04311716	4	roller
21	04311718	1	plate
22	0.900.1541.1	2	spring
23	04311719	2	pressure plate ring
24	04311720	1	pin
25	04311762	2	pin
26	04350980.4	1	shock absorber
27	01126001	2	pin
28	04344957	1	fork
29	04418339	2	rivet
30	04350893	1	profile
31	04311699	1	rubber plate
32	04418340	1	shock absorber
33	04311692	1	disc
34	0.010.2983.0	1	sub-assy parts
35	04311768	1	spring
36	04311769	1	nut
37	04311765	1	support
38	04311748	1	plug
39	0.010.3876.0	1	pin 3x16
40	0.010.3874.1	1	pin 4x28
41	04418341	1	knob
42	04418342.4	1	mandrel
43	02374954	1	cap
44	04311694	1	roller
45	04350999	1	metal strip
46	04311749	1	spring
47	04350890	1	bushing
52	04418345.4	1	spring
54	0.900.0371.4	1	seat guide

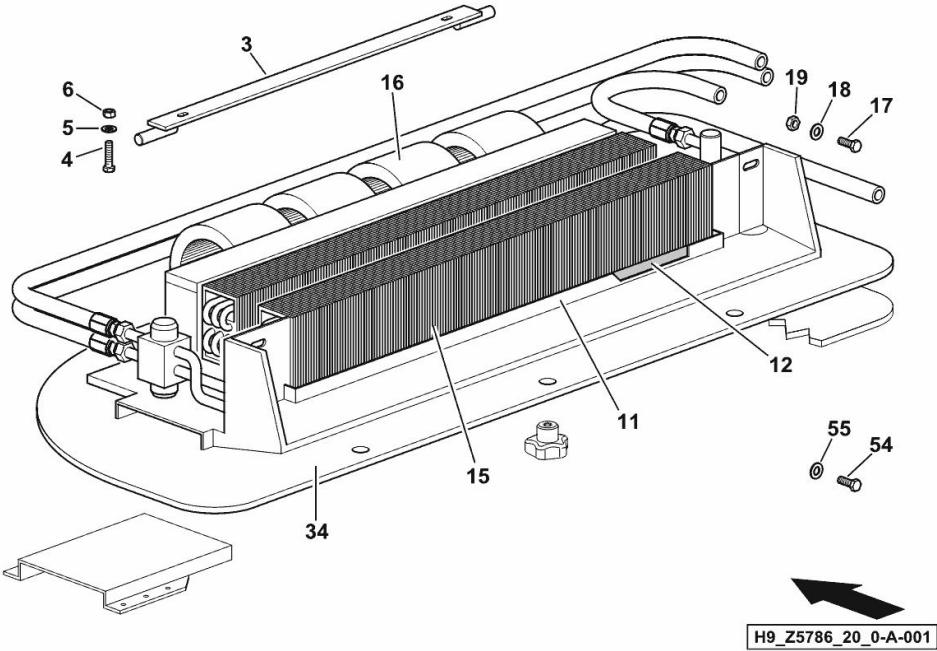


Section: HG - CAB
CLIMATE CONTROL SYSTEM

Fig.	P/n	QTY	Name
------	-----	-----	------

Notes:
[6090 -> 16001]

3	16057283	1	hinge
4	2.0114.007.2	2	screw m 6 p.1 x 20
5	2.1310.002.2	2	flat washer 6.4x12.5
6	2.1120.003.2	2	self-locking nut m 6
11	16058719	1	water container
12	16058726	1	plate
15	16058715	1	water cooler
16	16057242	1	fan
17	01112201	2	screw m 5 x 12
18	2.1310.001.2	2	flat washer 5.3 x 10
19	2.1120.002.2	2	self-locking nut m 5
34	16058717	1	casing
54	2.0312.203.3	4	screw m8x14
55	2.1310.004.3	4	washer 8.4x17

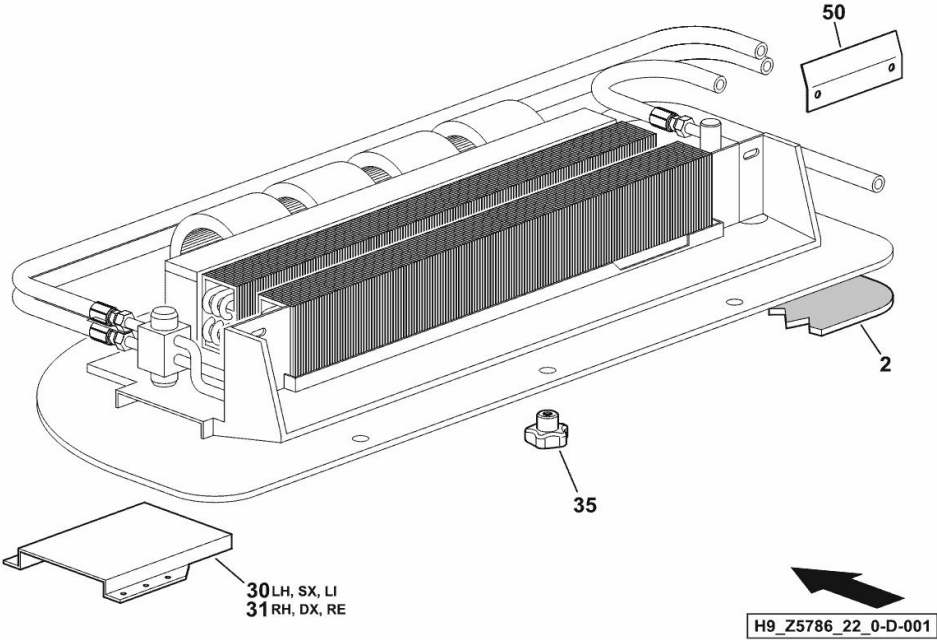


CLIMATE CONTROL SYSTEM

Fig.	P/n	QTY	Name
------	-----	-----	------

Notes:
[6090 -> 16001]

2	0.016.5523.0	1	lining
30	16057292	1	plate sx/lh/li
31	16057291	1	plate dx/rh/re
35	01146026	3	knob
50	0.016.3590.0	1	plate



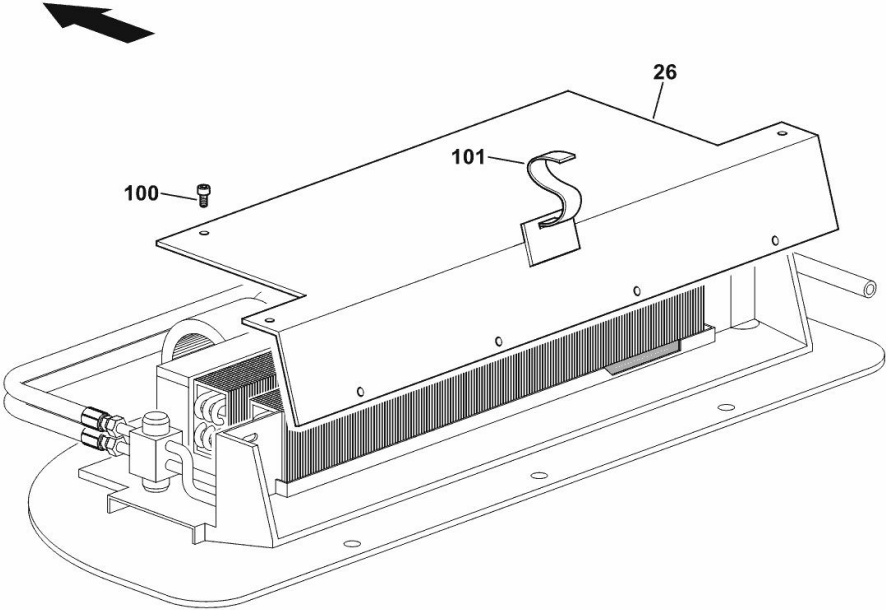
Section: HG - CAB
COVER PLATE

Fig.	P/n	QTY	Name
------	-----	-----	------

Notes:
[6090 -> 16001]

26	16058722	1	cover
100	06209762	6	screw m 5 p.0.8 x 25
101	16058809	1	band

H9_Z5786_20_0-C-001

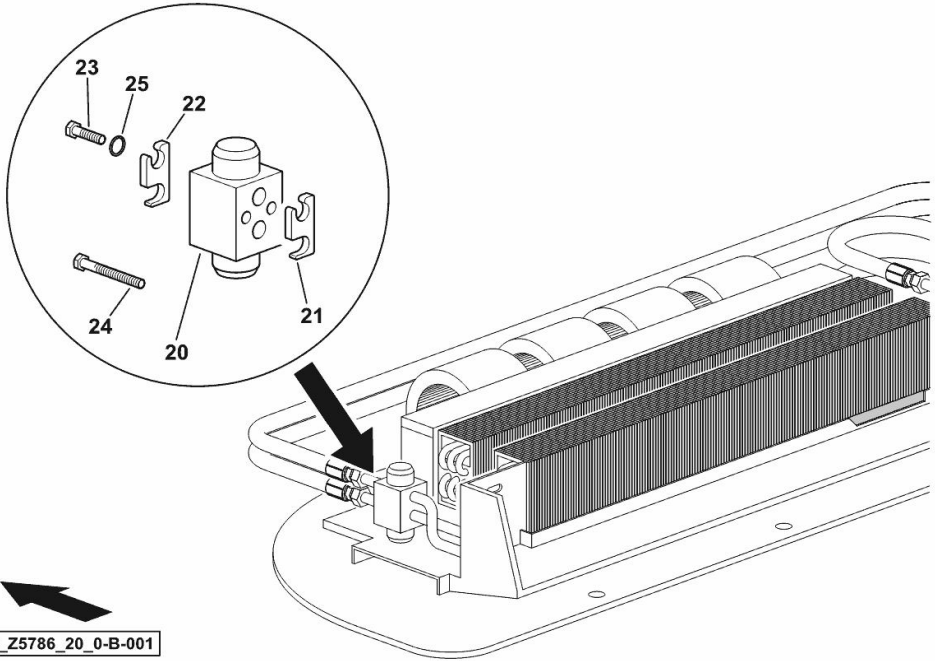


Section: HG - CAB
VALVE

Fig.	P/n	QTY	Name
------	-----	-----	------

Notes:
[6090 -> 16001]

20	16058725	1	valve
21	16058723	1	support - REAR
22	16058724	1	support - FRONT
23	2.0312.014.2	2	screw m 5 p.0.8 x 40
24	2.0114.005.2	1	screw m 6 p.1.0 x 16
25	2.1474.007.2	1	washer 6, d128



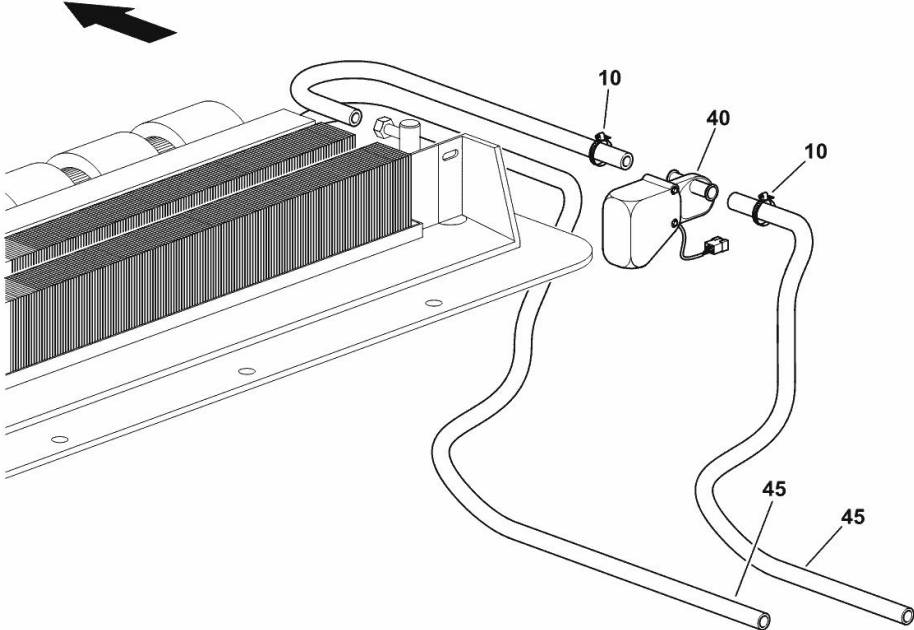
Section: HG - CAB
VALVE AND PIPES

Fig.	P/n	QTY	Name
------	-----	-----	------

Notes:
[6090 -> 16001]

10	01133514	10	clamp Ø 20/32
40	16057675	1	valve
45	16058757	2	flexible hose

H9_Z3386_21_0-B-001



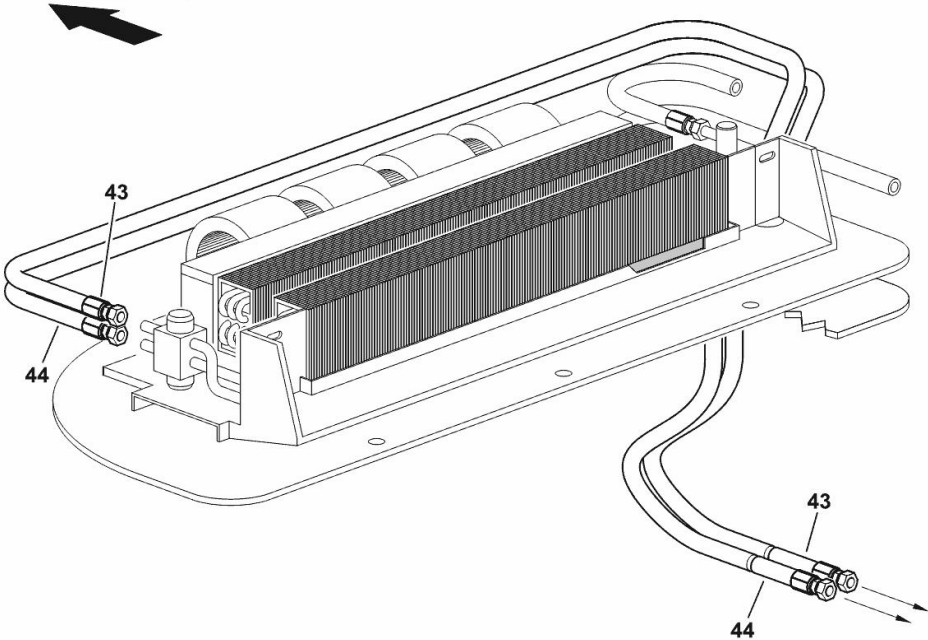
HOSES

Fig.	P/n	QTY	Name
------	-----	-----	------

Notes:
[6090 -> 16001]

43	16058754	1	flexible hose
44	16058755	1	flexible hose

H9_Z3386_21_0-A-001

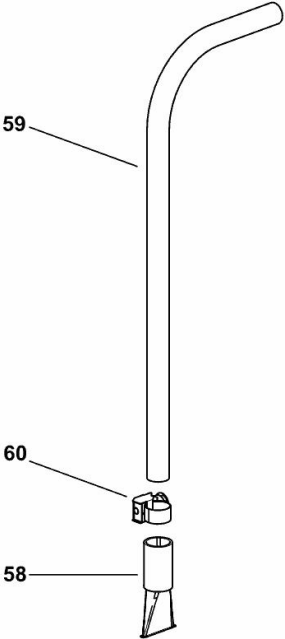


AIR CONDITIONING UNIT - LINES

Fig.	P/n	QTY	Name
------	-----	-----	------

Notes:
[6090 -> 16001]

58	0.009.0890.0	2	terminal
59	0.020.6752.0	0.8	tube Ø 15
60	01173965	2	clamp 10-16/9 h3461



H9_Z5771_25_0-F-001

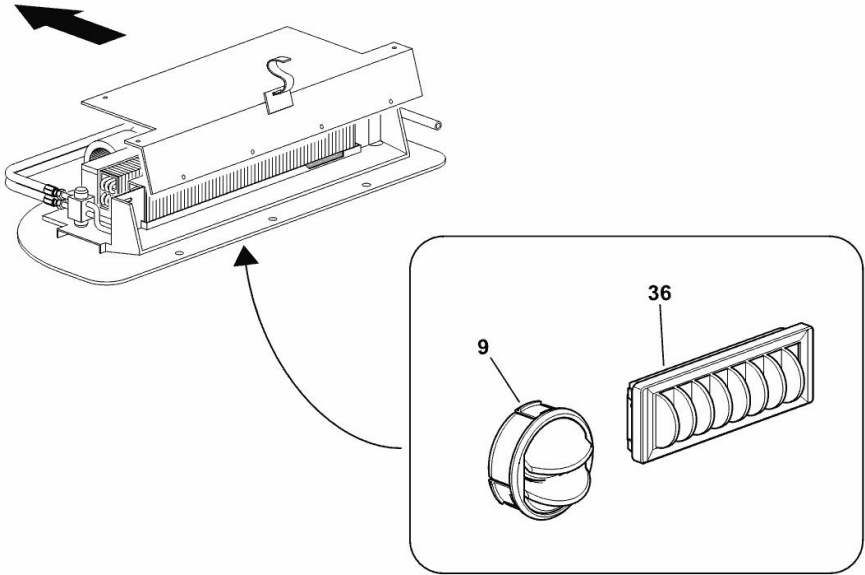
Section: HG - CAB
AIR VENTS

Fig.	P/n	QTY	Name
------	-----	-----	------

Notes:
[6090 -> 16001]

9	0.009.0455.4	2	vent mm 67.5
36	16057277	6	mixer

H9_Z5786_22_0-C-001

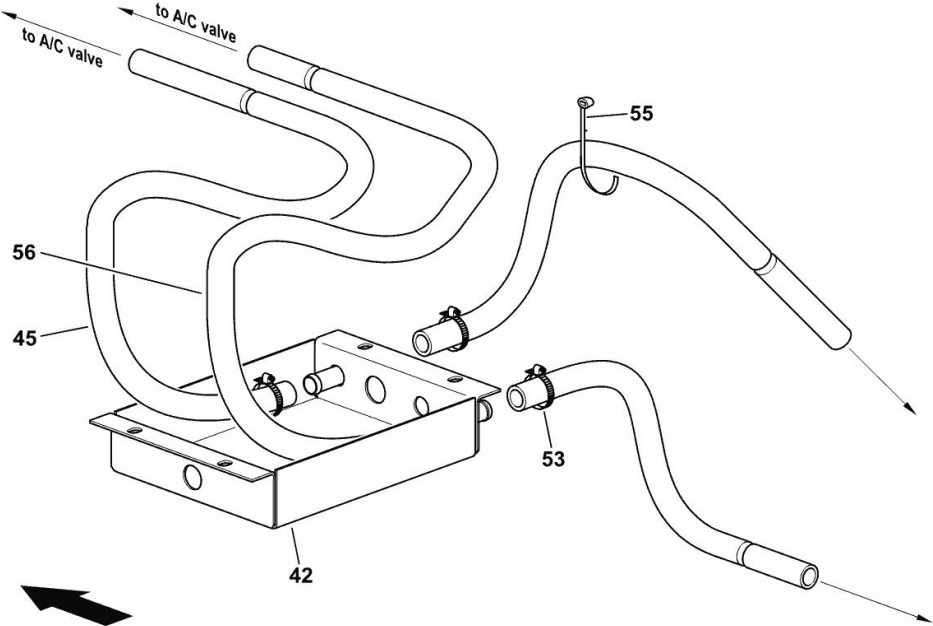


STORAGE COMPARTMENT COOLING

Fig.	P/n	QTY	Name
------	-----	-----	------

Notes:
[6090 -> 16001]

42	16057289/20	1	body
45	0.019.6568.0	4.5	flexible hose
53	2.6851.001.0	2	clamp Ø 16/25
55	2.6852.001.0	30	clamp 99 x 2.5
56	0.019.6568.0	4.5	flexible hose



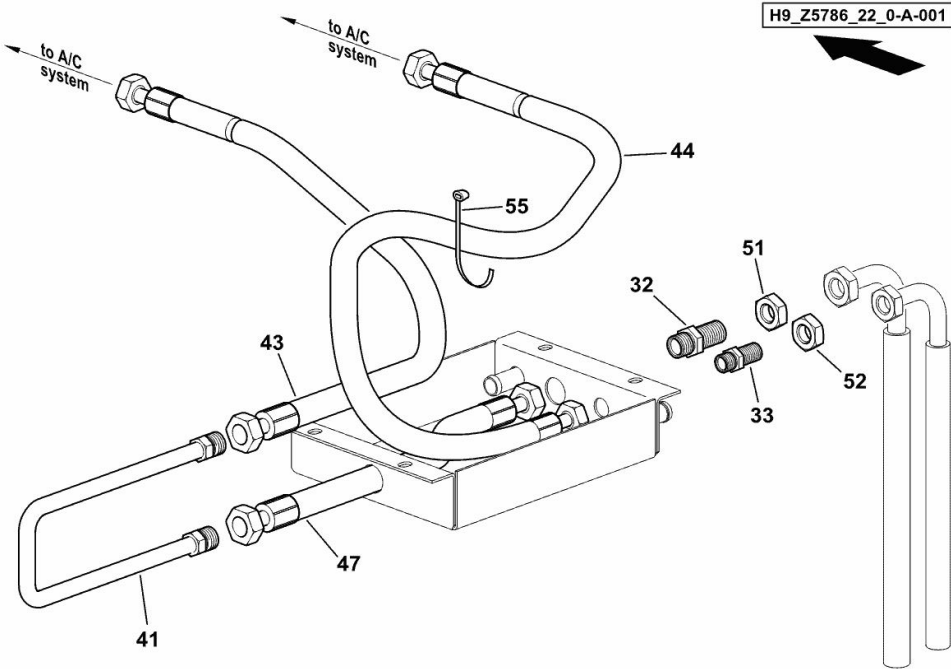
H9_Z5786_22_0-B-002

STORAGE COMPARTMENT COOLING

Fig.	P/n	QTY	Name
------	-----	-----	------

Notes:
[6090 -> 16001]

32	0.016.1397.0/20	1	pipe fitting W 21.8x14 g6
33	0.016.1398.0/20	1	pipe fitting W 15.8x18 g6
41	16058727	1	tube U
43	16058754	1	flexible hose
44	16058755	1	flexible hose
47	16058756	1	flexible hose
51	2.1099.169.2/10	1	nut 1/2" gas
52	2.1099.170.2/10	1	nut 3/8" gas
55	2.6852.001.0	30	clamp 99 x 2.5



Thank you so much for reading.
Please click the “Buy Now!”
button below to download the
complete manual.



After you pay.

You can download the most
perfect and complete manual in
the world immediately.

Our support email:

ebooklibonline@outlook.com