

Agrovector 30.7

Section: FRAME & ATTACHING PARTS

Ref: 31.00.0 (1)

FIGURE 1-1 FRAME SHROUDING & TRIM, COVERS (1160005246) <-

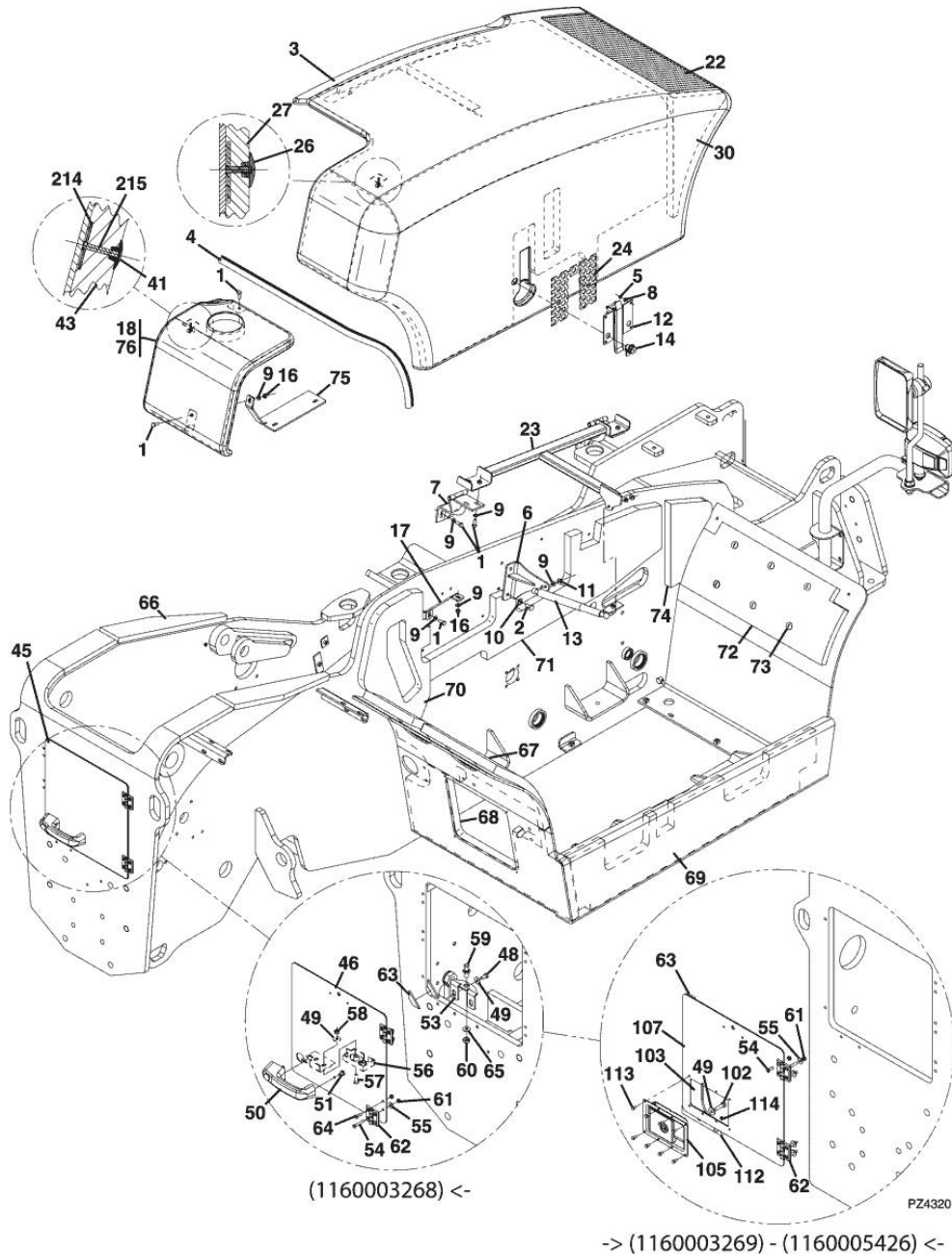


Fig.	P/n	QTY	Name
0	0.000.0000.1		cannot be supplied ENGINE HOOD INSTALLATION NOT AVAILABLE TO ORDER, SEE ITEMS 1 THRU 18 FOR SERVICE
1	0.900.0155.4	11	screw m 8 p.1.25 x 20
2	0.900.0155.9	2	screw m 10 p.1.5 x 20
3	0.000.0000.1		cannot be supplied ENGINE HOOD ASSY INCLUDES ITEMS 22 THRU 30 NO LONGER AVAILABLE, ORDER 0.900.1171.8
4	0.900.0165.1	64	gasket
5	0.900.0182.4	3	nut
6	0.900.0406.5	1	bracket
7	0.900.0200.6	2	hinge
8	0.900.0201.2	3	washer 6, d128
9	0.900.0201.3	11	washer 8
10	0.900.0201.4	2	washer 10.5
11	0.900.0203.6	1	nut m 8
12	0.900.0245.4	1	small plate
13	0.900.0426.4	1	spring
14	0.900.0245.8	1	interlock
16	0.900.0182.6	2	nut m 8 p.1.25
17	0.900.0188.4	1	plate
18	0.900.0409.3	1	panel INCLUDES ITEMS 41, 43, 76, 214 & 215
22	0.900.0173.0	1	grille
23	0.900.0194.5	1	support
24	0.900.0200.7	1	plate
26	0.900.0408.3	25	cap
27	0.900.0420.0	1	sound deadening
30	0.900.0420.3	1	sound deadening dx/rh/re
41	0.900.0408.3	7	cap
43	0.900.0420.1	1	sound deadening
45	0.900.0246.7	1	cover kpl. 1160003269 <- INCLUDES ITEMS 46 THRU 65
45	0.900.0914.5	1	cover kpl. -> 1160003269, 1160005246 <- INCLUDES ITEMS 49 QTY. 2, 54, 55, 61 THRU 64, 101 THRU 114
46	0.900.0449.1	1	cover

FIGURE 1-1 FRAME SHROUDING & TRIM, COVERS (1160005246) <-

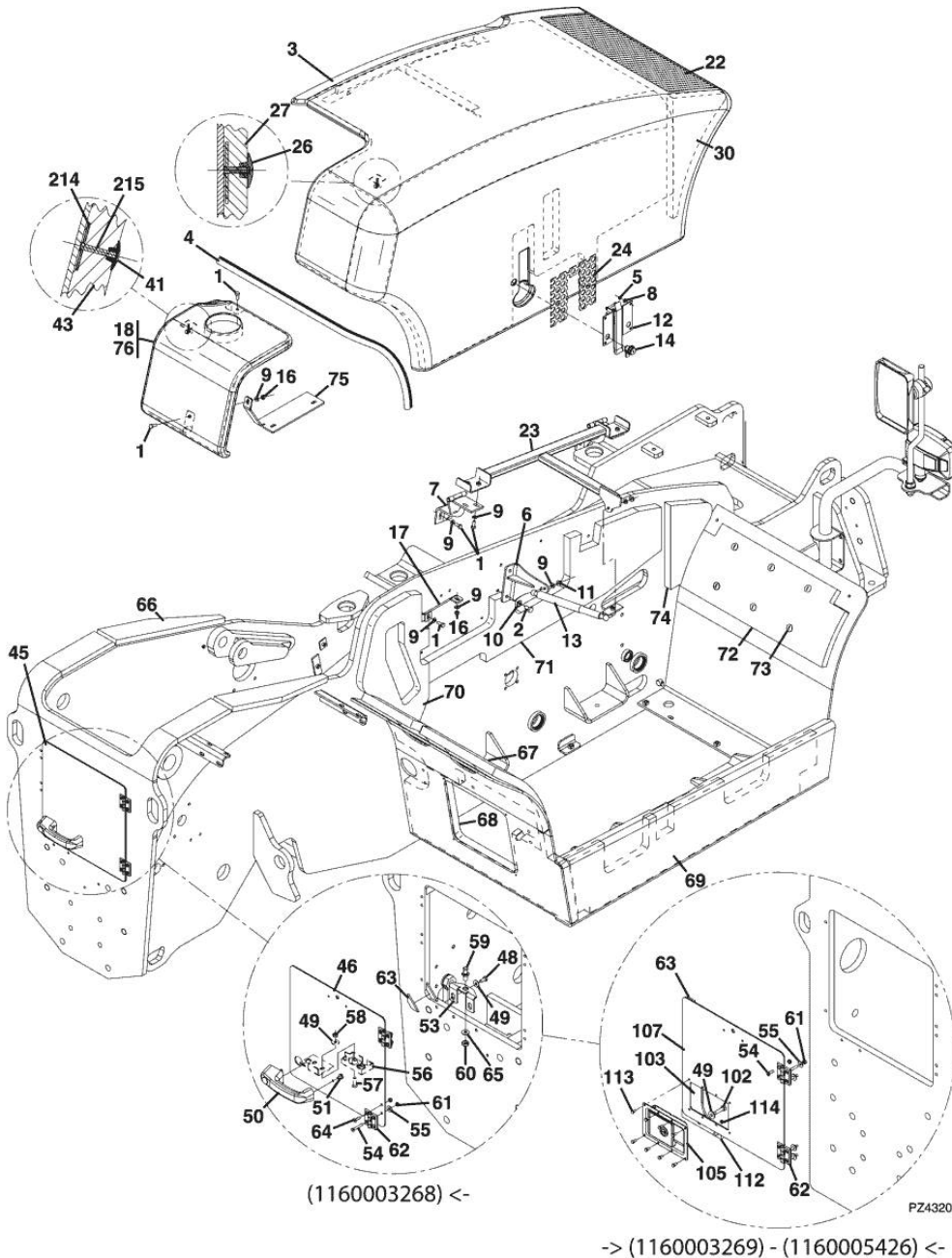


Fig.	P/n	QTY	Name
48	0.900.0155.3	2	screw m 8 p.1.25 x 16
49	0.900.0203.4	4	washer 8
50	0.900.0249.5	1	handle
51	0.900.0203.0	2	bolt m 6 p.1 x 10
53	0.900.0249.7	1	support
54	0.900.0249.4	4	screw m 6 p.1 x 40
55	0.900.0203.3	4	washer 6, d128
56	0.900.0248.5	1	lock
57	0.900.0162.8	2	screw m 6 p.1 x 40
58	0.900.1082.5	2	gear
59	0.900.0248.4	1	pin
60	0.900.0421.5	1	nut m 12
61	0.900.0182.4	8	nut
62	0.900.0249.3	2	hinge
63	0.900.0253.5	12	gasket
64	0.900.0152.0	4	screw m 6 x 20
65	0.900.0201.5	1	washer 12
66	0.900.0295.8	1	chassis frame X 26.6
66	0.900.0296.1	1	chassis frame X 30.7
66	0.900.0415.2	1	chassis frame X 26.6 LP, 1160002183 <-
66	0.900.0928.1	1	chassis frame X 26.6 LP, -> 1160002184
67	0.900.0419.4	1	sound deadening
68	0.900.0419.5	1	sound deadening
69	0.900.0419.7	1	sound deadening
70	0.900.0419.8	1	sound deadening
71	0.900.0419.9	1	sound deadening
72	0.900.0420.2	1	sound deadening
73	0.900.0408.3	6	cap
74	0.900.0420.4	1	sound deadening
75	0.900.0423.9	1	support
76	0.900.0296.4	1	panel
102	0.900.0155.6	2	screw m 8 p.1.5 x 30
103	0.900.0924.8	1	bracket
105	0.900.0925.0	1	cover
107	0.900.0929.1	1	cover
112	0.900.0924.9	1	spacer
113	0.900.0924.1	8	screw m5x10
114	0.900.0929.0	8	nut m5x0.8
214	0.900.1335.6	7	plate
215	0.900.1336.2	7	carrier

Agrovector 30.7

Section: FRAME & ATTACHING PARTS

Ref: 31.00.1 (1)

FIGURE 1-1 FRAME SHROUDING & TRIM, COVERS -> (1160005247)

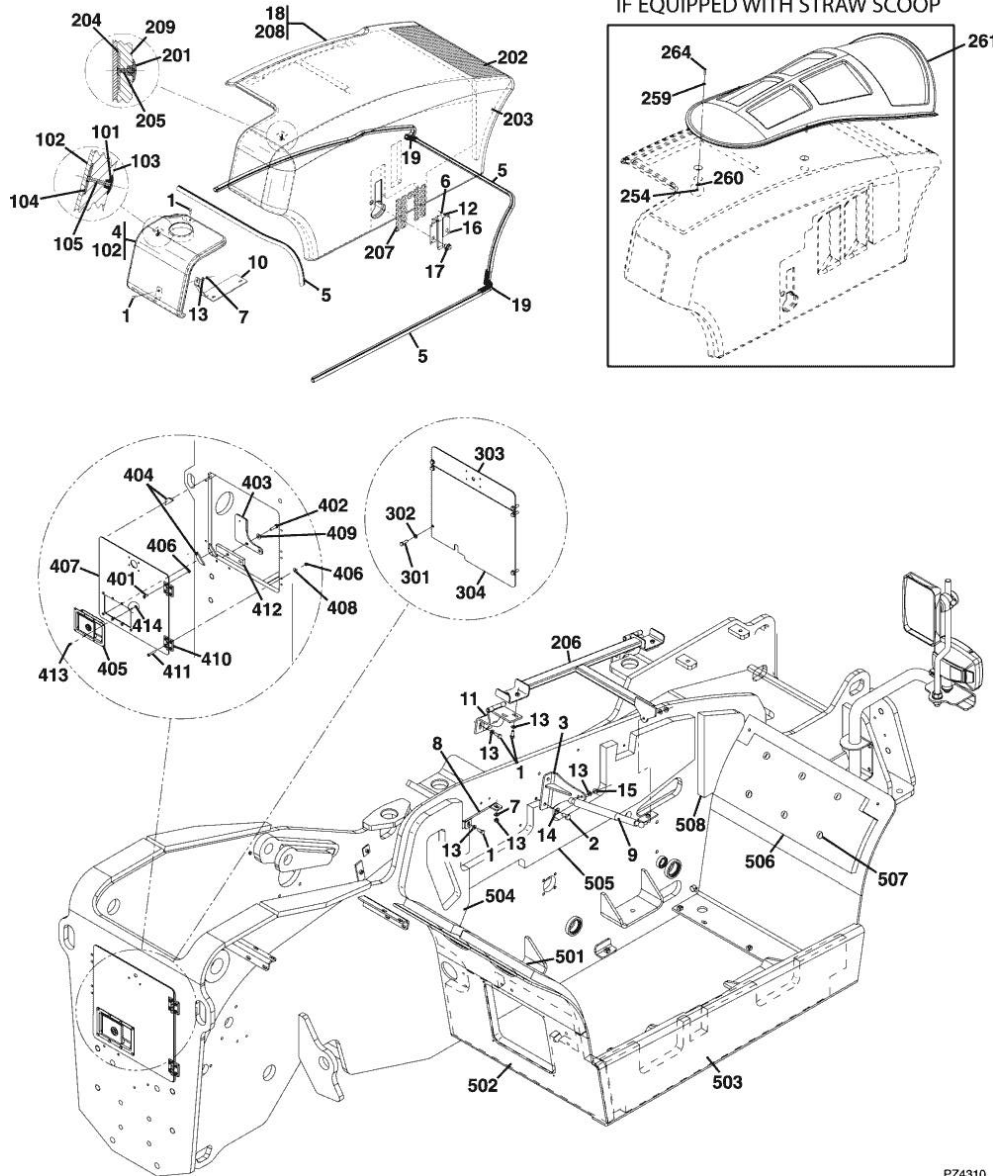


Fig.	P/n	QTY	Name
Notes: [Agrovector 30.7]			
0	0.900.1394.1		hood kpl. ENGINE HOOD INSTALLATION IF EQUIPPED NOT AVAILABLE TO ORDER, SEE ITEMS 1 THRU 19 FOR SERVICE
0	0.900.1394.2		hood kpl. ENGINE HOOD INSTALLATION WITH STRAW SCOOP IF EQUIPPED NOT AVAILABLE TO ORDER, SEE ITEMS 1 THRU 19
1	0.900.0155.4	11	screw m 8 p.1.25 x 20
2	0.900.0155.9	2	screw m 10 p.1.5 x 20
3	0.900.0406.5	1	bracket
4	0.900.0409.3	1	panel
5	0.900.0165.1	64	gasket
6	0.900.0182.4	3	nut
7	0.900.0182.6	2	nut m 8 p.1.25
8	0.900.0188.4	1	plate
9	0.900.0426.4	1	spring
10	0.000.0000.1		cannot be supplied
11	0.900.0200.6	2	hinge
12	0.900.0201.2	3	washer 6, d128
13	0.900.0201.3	11	washer 8
14	0.900.0201.4	2	washer 10.5
15	0.900.0203.6	2	nut m 8
16	0.900.0245.4	1	small plate
17	0.900.0245.8	1	interlock
18	0.900.0989.2	1	hood WITH SCOOP INCLUDES ITEMS 201 THRU 209 & 254 THRU 264 IF EQUIPPED
18	0.900.1171.8	1	hood INCLUDES ITEMS 201 THRU 209 IF EQUIPPED
19	0.000.0000.1		cannot be supplied HOOD CORNER SEALS INSTALLATION
19.1	0.900.1395.2	0.26	gasket
101	0.900.0408.3	7	cap
102	0.900.0163.2	1	panel
103	0.900.0420.1	1	sound deadening
104	0.900.1335.6	7	plate

PZ4310

Agrovector 30.7

Section: FRAME & ATTACHING PARTS

Ref: 31.00.1 (1)

FIGURE 1-1 FRAME SHROUDING & TRIM, COVERS -> (1160005247)

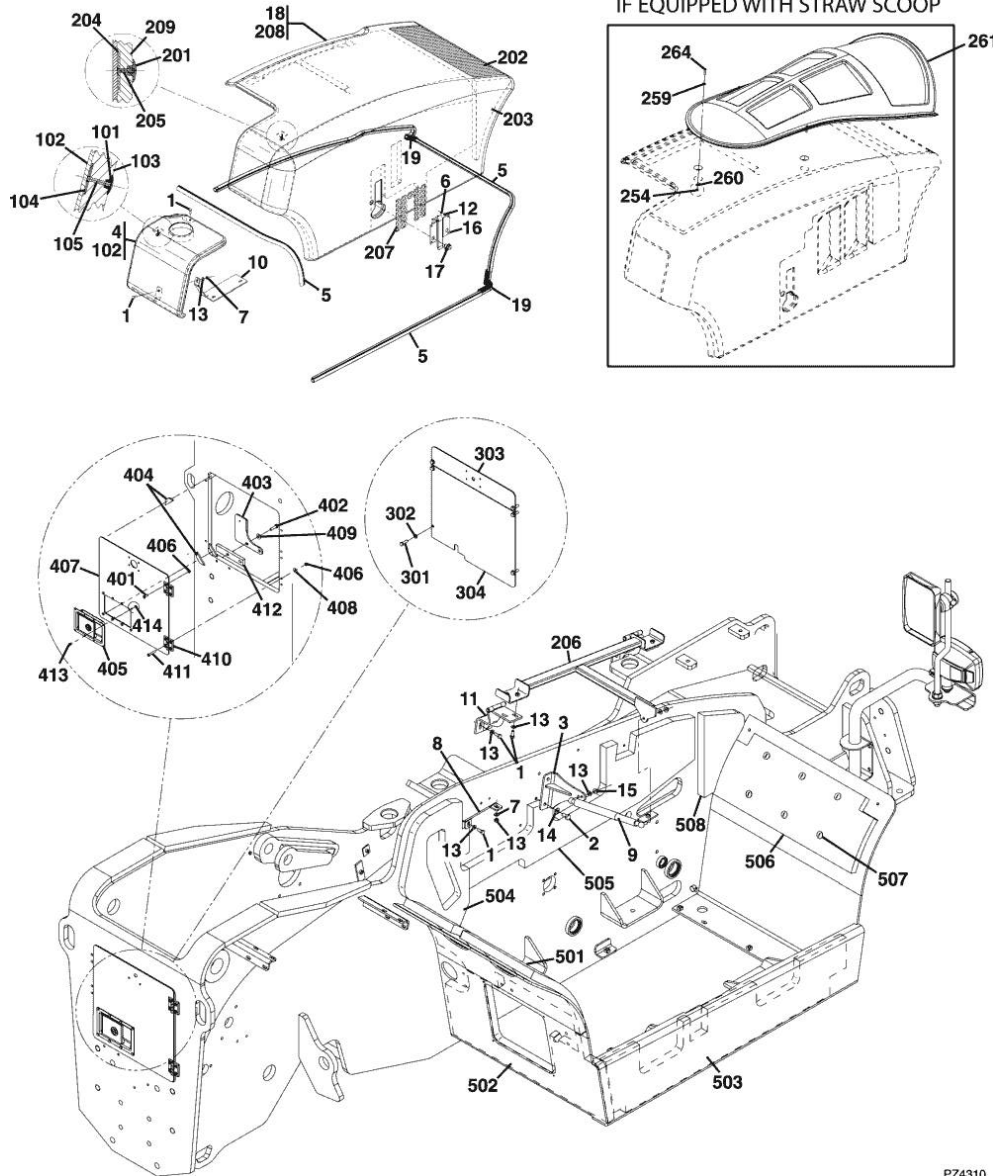


Fig.	P/n	QTY	Name
105	0.900.1336.2	7	carrier
201	0.900.0408.3	22	cap
202	0.900.0173.0	1	grille
203	0.900.0420.3	1	sound deadening dx/rh/re
204	0.900.1335.6	22	plate
205	0.900.1396.0	22	stud bolt
206	0.900.0194.5	1	support
207	0.900.0200.7	1	plate
208	0.900.0989.1	1	hood
209	0.900.1394.3	1	sound deadening
254	0.900.0182.3	5	nut
259	0.900.1338.4	5	washer 6 mm
260	0.900.0201.8	5	washer 6, d128
261	0.900.0989.3	1	cover
261.1	0.900.1395.1	35	gasket
264	0.900.1394.4	5	bolt m 6 x 30
300	0.900.1395.0		panel kpl. REAR ACCESS PANEL INSTALLATION IF EQUIPPED INCLUDES ITEMS 301 THRU 304 FOR SERVICE
301	0.900.1290.2	6	screw
302	0.900.0201.3	6	washer 8
303	0.900.1394.8	1	plate
304	0.900.1394.9	1	plate
400	0.900.0914.5		cover kpl. REAR ACCESS PANEL INSTALLATION IF EQUIPPED NOT AVAILABLE TO ORDER, SEE ITEMS 401 THRU 414
401	0.900.0152.0	1	screw m 6 x 20
402	0.900.0155.6	2	screw m 8 p.1.5 x 30
403	0.900.0924.8	1	bracket
404	0.900.0253.5	12	gasket
405	0.900.0925.0	1	cover
406	0.900.0182.4	8	nut
407	0.900.0929.1	1	cover
408	0.900.0203.3	4	washer 6, d128
409	0.900.0203.4	2	washer 8
410	0.900.0249.3	2	hinge
411	0.900.0249.4	4	screw m 6 p.1 x 40
412	0.900.0924.9	1	spacer
413	0.900.0924.1	8	screw m5x10
414	0.900.0929.0	8	nut m5x0.8
501	0.900.0419.4	1	sound deadening

PZ4310

Agrovector 30.7

Section: FRAME & ATTACHING PARTS

Ref: 31.00.1 (1)

FIGURE 1-1 FRAME SHROUDING & TRIM, COVERS -> (1160005247)

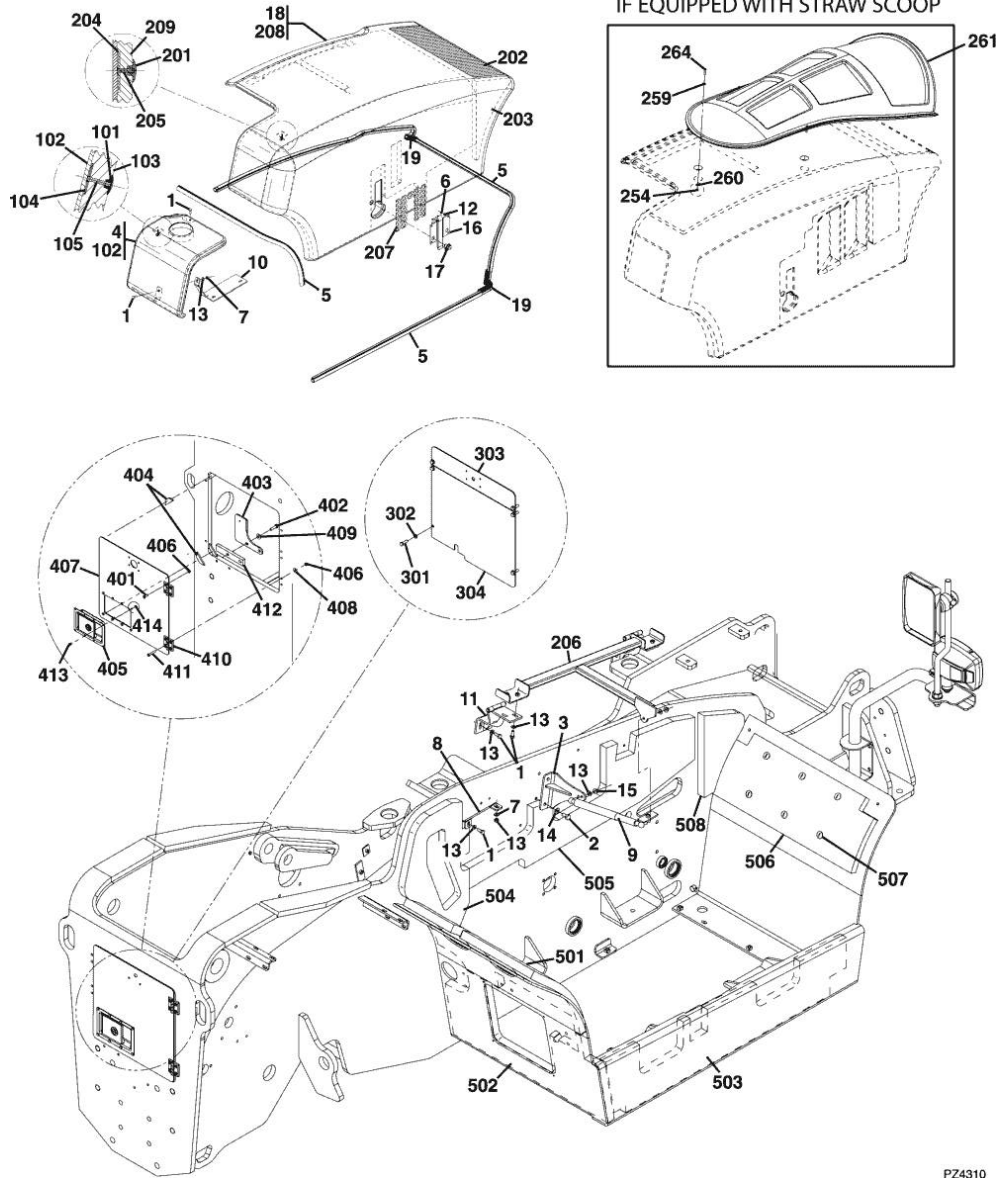


Fig.	P/n	QTY	Name
502	0.900.0419.5	1	sound deadening
503	0.900.0419.7	1	sound deadening
504	0.900.0419.8	1	sound deadening
505	0.900.0419.9	1	sound deadening
506	0.900.0420.2	1	sound deadening
507	0.900.0408.3	6	cap
508	0.900.0420.4	1	sound deadening

PZ4310

Section: FRAME & ATTACHING PARTS

FIGURE 1-2 FRAME SHROUDING & TRIM, CAB & MIRRORS

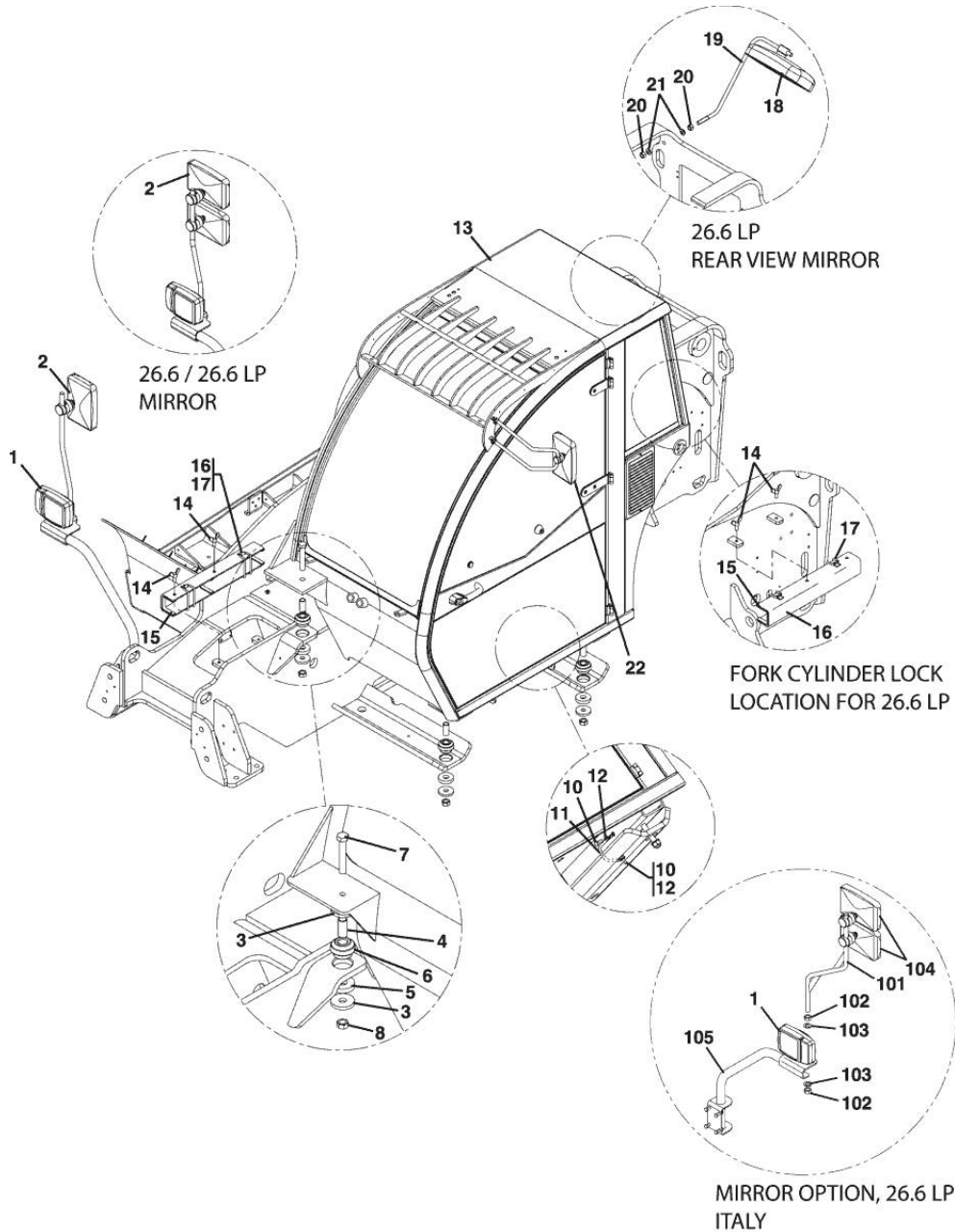


Fig.	P/n	QTY	Name
Notes: [Agrovector 30.7]			
1	0.000.0000.1		cannot be supplied HEADLIGHT ASSY ☞ 3A.00.0
2	0.900.0420.9	2	mirror X 26.6 X 26.6 LP ☞ 3A.00.0
3	0.900.0164.9	8	disc
4	0.900.0200.9	4	bushing
5	0.900.0245.6	4	disc
6	0.900.0245.7	4	silent-block
7	0.900.0154.3	4	screw 10.9 TORQUE TO 150 NM
8	0.900.0183.4	4	nut m 20 p.2.25
10	0.900.0156.1	2	screw m 10 p.1.5 x 25
11	0.900.0448.9	1	electric cable
12	0.900.0201.4	2	washer 10.5
13	0.000.0000.1		cannot be supplied CAB ☞ 36.00.0
14	0.900.0428.4	2	screw m12x30
15	0.900.0253.5	12	gasket
16	0.900.0408.1	1	rod
17	0.900.0413.2	2	ring
18	0.900.0252.5	1	mirror
19	0.900.0191.2	1	support
20	0.900.0800.0	2	nut m 16 p.2
21	0.900.0201.6	2	washer 16
22	0.000.0000.1		cannot be supplied ☞ 36.00.0
100	0.900.0923.4	1	mirror kpl. X 26.6 LP ITALY INCLUDES ITEMS 101 THRU 104
101	0.900.0924.2	1	rod
102	0.900.0183.4	2	nut m 20 p.2.25
103	0.900.0201.7	2	washer 20
104	0.900.0420.9	2	mirror
105	0.000.0000.1		cannot be supplied HEADLIGHT BRACKET, L.H. ☞ 3A.00.0

FIGURE 1-3 AXLE & FENDER INSTALLATION 30.7

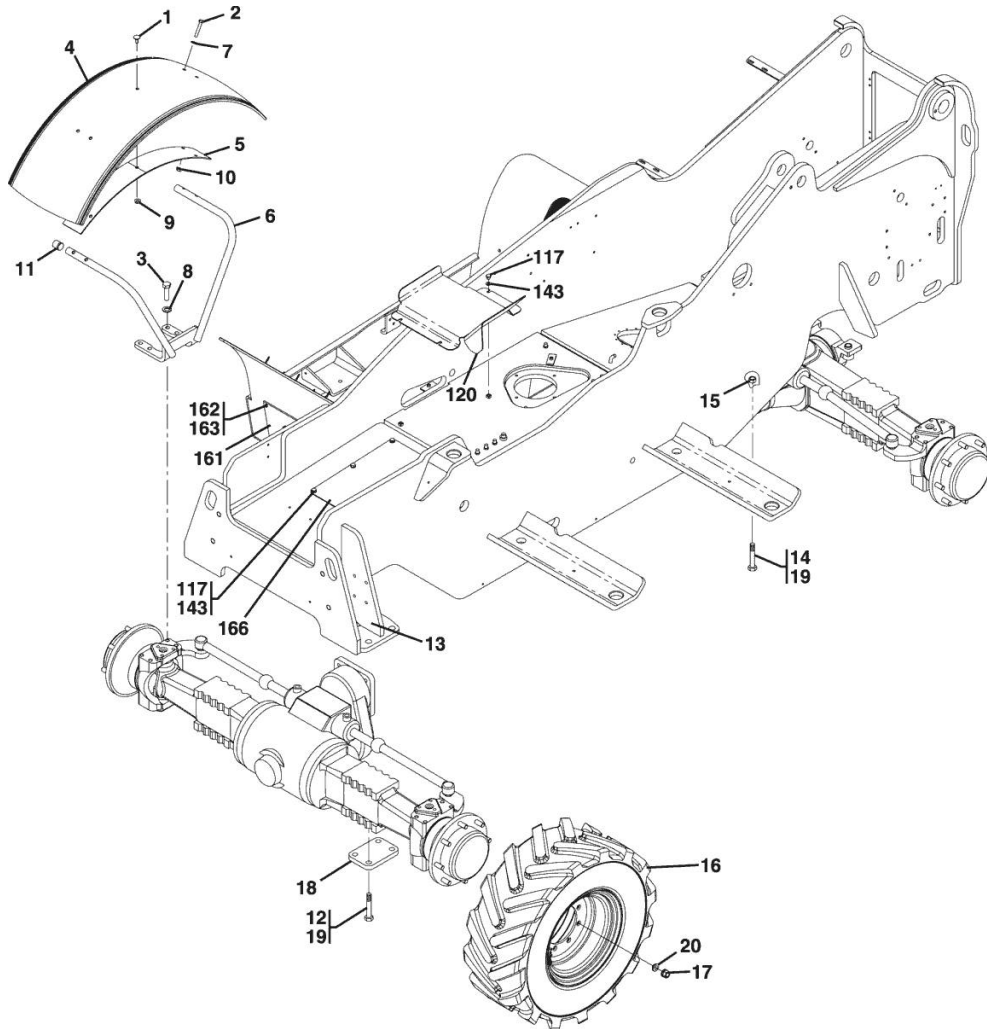


Fig.	P/n	QTY	Name
Notes:			
[Agrovector 30.7]			
0	0.900.0149.4	1	fender x 30.7, kpl. X 30.7
OPTIONAL INCLUDES ITEMS 1 THRU 11			
1	0.900.0421.1	4	bolt 1.25 x 20
2	0.900.0153.4	16	screw m10 p.1,5x50
3	0.900.0156.8	16	screw m 16 x 45
4	0.900.0885.7	4	fender
5	0.900.0188.2	4	support
6	0.900.0194.7	4	carrier
7	0.900.0201.4	16	washer 10.5
8	0.900.0201.6	16	washer 16
9	0.900.0203.6	4	nut m 8
10	0.900.0203.7	16	nut
11	0.900.0249.6	8	plug
12	0.900.0154.5	8	screw m 20 x 280
13	0.900.0184.2	8	nut m 24x3
14	0.900.0152.3	6	screw m 20 p.1.5x140
15	0.900.0183.5	6	nut m 20 p.1.5
16	0.000.0000.1		cannot be supplied TIRE & RIM ASSY ☞ 35.00.57
17	0.900.0215.3	32	nut TORQUE TO 300 NM
18	0.900.0189.4	2	small plate
19	0.900.0149.0		loctite # 271
20	0.900.0215.2	32	washer
117	0.900.0155.7	9	screw m10x10
120	0.900.0296.2	1	cover
143	0.900.0201.4	9	washer 10.5
161	0.900.0926.2	1	cover
162	0.900.0193.7	6	screw m 6 x 16
163	0.900.0201.2	6	washer 6, d128
166	0.900.0927.1	1	cover

Section: BOOM

FIGURE 2-1 FIRST BOOM SECTION 30.7

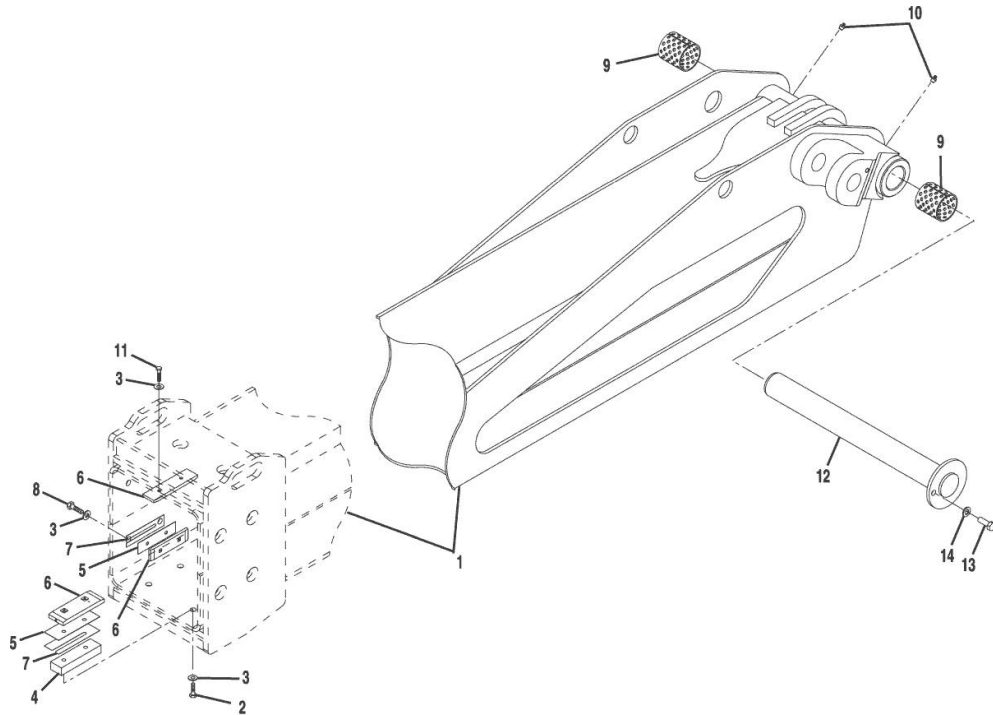


Fig.	P/n	QTY	Name
Notes:			
[Agrovector 30.7]			
1	0.900.0295.9	1	arm X 30.7
2	0.900.0153.2	4	screw m 10 p.1.5 x 40 AS REQUIRED TORQUE TO 50 NM
2	0.900.0153.3	4	screw m10 p.1,5x45 AS REQUIRED TORQUE TO 50 NM
2	0.900.0153.4	4	screw m10 p.1,5x50 AS REQUIRED TORQUE TO 50 NM
3	0.900.0201.4	16	washer 10.5
4	0.900.0188.0	2	shim
5	0.900.0247.8	8	shim
6	0.900.0246.6	8	small plate
7	0.900.0249.9		shim 50 x 200 x 2.0
7	0.900.0250.2		shim 50 x 200 x 0.5
7	0.900.0250.3		shim 50 x 200 x 1.0
7	0.900.0250.4		shim 50 x 200 x 1.5
8	0.900.0155.9	8	screw m 10 p.1.5 x 20 AS REQUIRED TORQUE TO 50 NM
8	0.900.0156.1	8	screw m 10 p.1.5 x 25 AS REQUIRED TORQUE TO 50 NM
8	0.900.0156.2	8	screw m 8 p.1.25 x 30 AS REQUIRED TORQUE TO 50 NM
9	0.900.0193.4	2	bushing
10	0.900.0171.3	2	grease gun
11	0.900.0155.9	4	screw m 10 p.1.5 x 20 TORQUE TO 50 NM
12	0.900.0185.7	1	pin
13	0.900.0156.7	1	screw m 12 x 35
14	0.900.0201.5	1	washer 12

Section: BOOM

FIGURE 2-2 SECOND BOOM SECTION 30.7

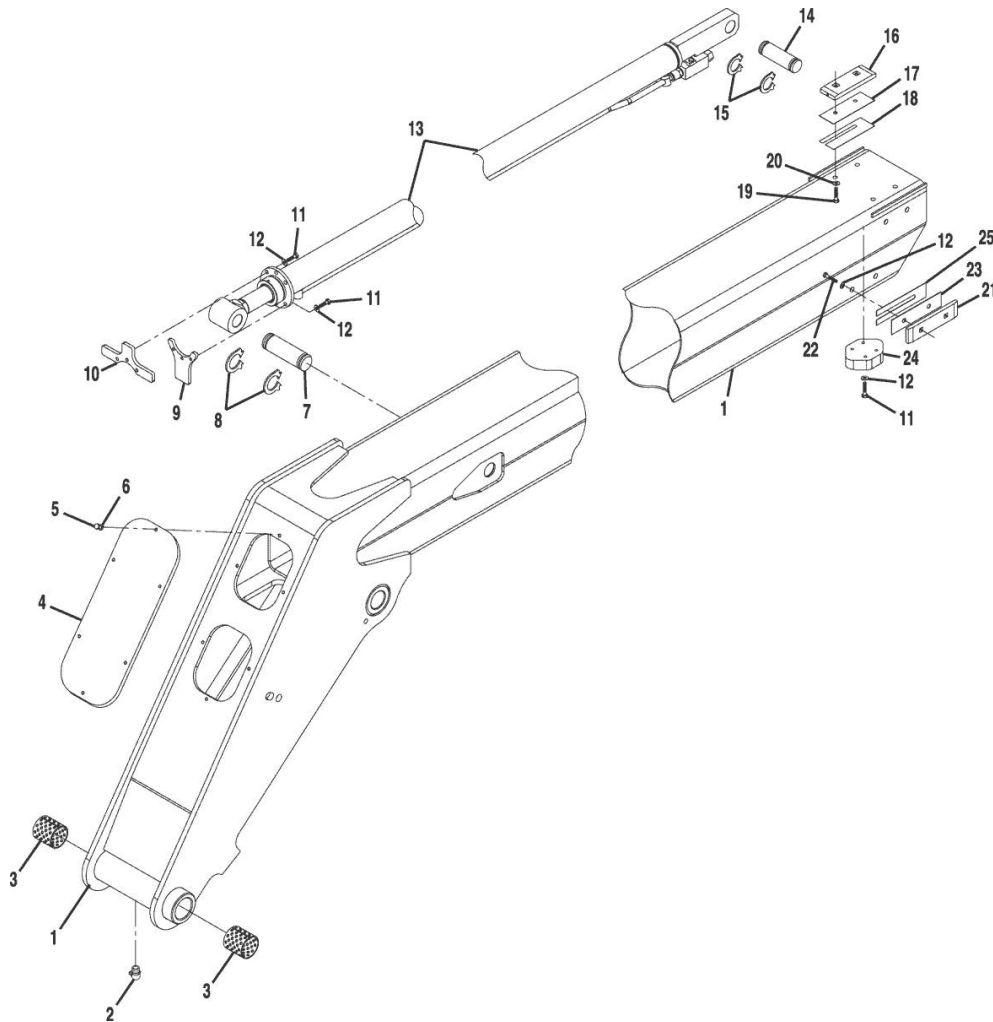


Fig.	P/n	QTY	Name
Notes:			
[Agrovector 30.7]			
1	0.900.0296.0	1	arm X 30.7
2	0.900.0171.4	1	grease gun 90 DEGREES
3	0.900.0193.5	2	bushing
4	0.900.0296.5	1	cover
5	0.900.0155.3	6	screw m 8 p.1.25 x 16
6	0.900.0201.3	6	washer 8
7	0.900.0184.8	1	pin
8	0.900.0190.8	2	ring
9	0.900.0194.4	1	bracket
10	0.900.0194.3	1	bracket
11	0.900.0156.1	10	screw m 10 p.1.5 x 25 TORQUE TO 50 NM
12	0.900.0201.4	18	washer 10.5
13	0.000.0000.1		cannot be supplied LIFT CYLINDER ☞ 39.00.4
14	0.900.0184.7	1	pin
15	0.900.0190.7	2	ring
16	0.900.0246.5	2	small plate
17	0.900.0248.3	2	shim
18	0.900.0249.8		shim 70 x 200 x 2.0
18	0.900.0250.1		shim 70 x 200 x 0.5
18	0.900.0250.5		shim 70 x 200 x 1.0
18	0.900.0250.6		shim 70 x 200 x 1.5
19	0.900.0156.4	4	screw m 12 p.1.75 x 20 AS REQUIRED TORQUE TO 90 NM
19	0.900.0156.5	4	screw m 12 p.1.75 x 25 AS REQUIRED TORQUE TO 90 NM
19	0.900.0156.6	4	screw m 12 p.1.75 x 30 AS REQUIRED TORQUE TO 90 NM
20	0.900.0201.5	4	washer 12
21	0.900.0246.6	4	small plate
22	0.900.0155.9	8	screw m 10 p.1.5 x 20 AS REQUIRED TORQUE TO 50 NM
22	0.900.0156.1	8	screw m 10 p.1.5 x 25

Section: BOOM

FIGURE 2-2 SECOND BOOM SECTION 30.7

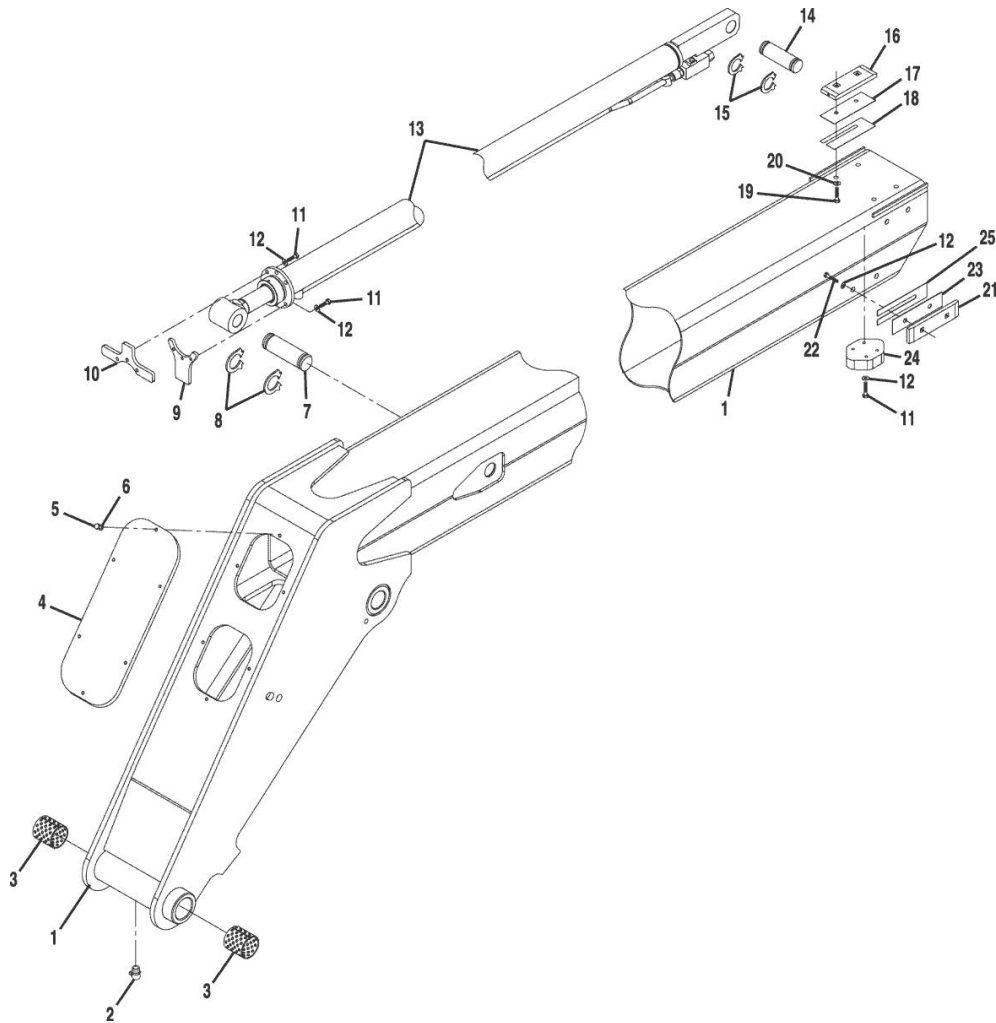


Fig.	P/n	QTY	Name
			AS REQUIRED
			TORQUE TO 50 NM
22	0.900.0156.2	8	screw m 8 p.1.25 x 30
			AS REQUIRED
			TORQUE TO 50 NM
23	0.900.0247.8	4	shim
24	0.900.0199.9	1	stopper
25	0.900.0249.9		shim 50 x 200 x 2.0
25	0.900.0250.2		shim 50 x 200 x 0.5
25	0.900.0250.3		shim 50 x 200 x 1.0
25	0.900.0250.4		shim 50 x 200 x 1.5

Section: BOOM

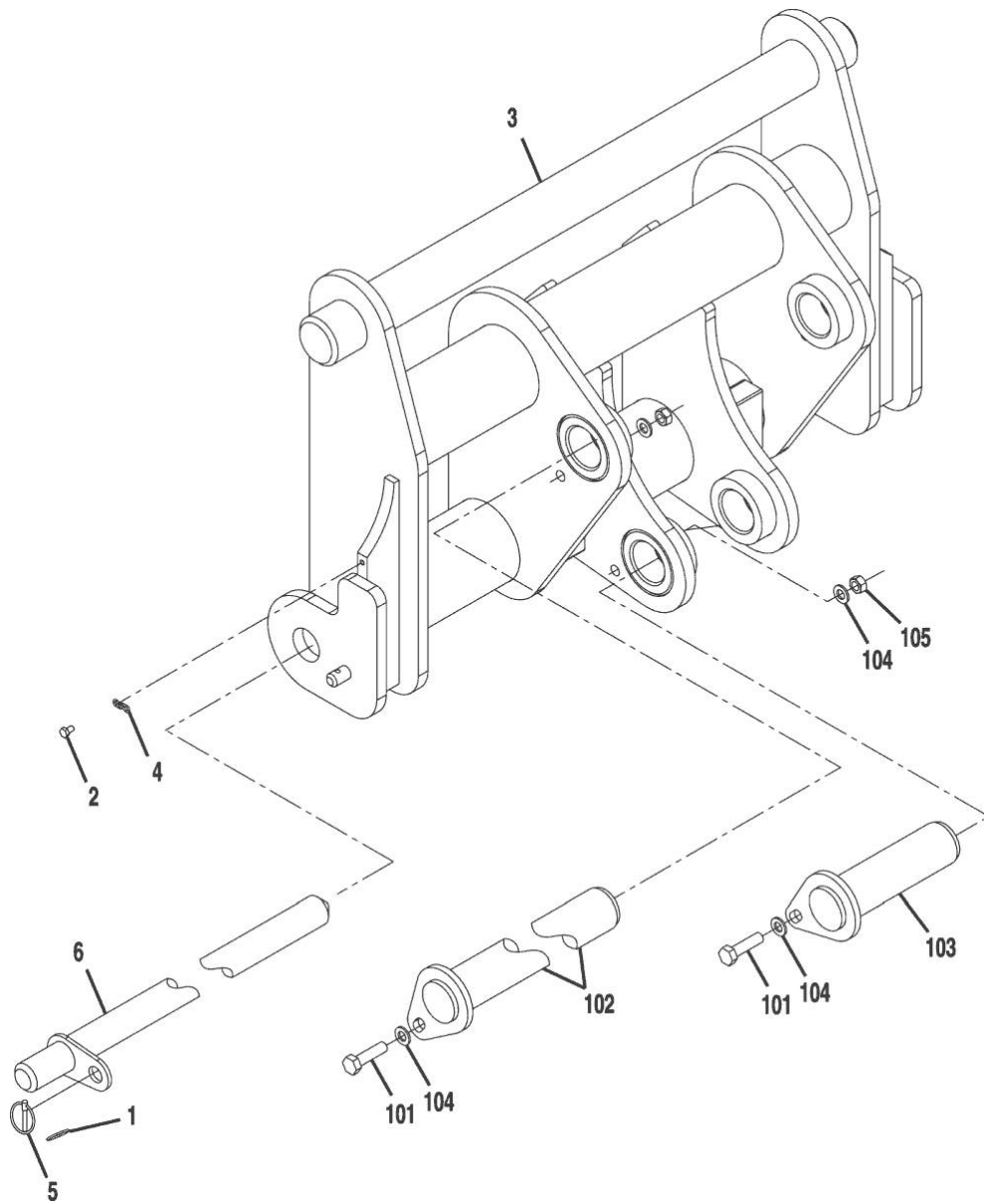
FIGURE 2-3 QUICK SWITCH ASSEMBLY

Fig.	P/n	QTY	Name
------	-----	-----	------

Notes:

[Agrovector 30.7]

0	0.900.0157.3	1	switch kpl. INCLUDES ITEMS 1 THRU 6
1	0.900.0198.9	1	ring
2	0.900.0154.7	1	screw m6 p.1x10
3	0.900.0157.4	1	switch
4	0.900.0262.7	1	chain
5	0.900.0192.5	1	split pin
6	0.900.0246.3	1	fork
101	0.900.0153.7	2	screw m 12 p.1.75 x 45, gr. 8.8
102	0.900.0185.1	1	pin
103	0.900.0185.0	1	pin
104	0.900.0201.5	4	washer 12
105	0.900.0183.1	2	nut m12 p.1.75



Thank you so much for reading.
Please click the “Buy Now!”
button below to download the
complete manual.



After you pay.

You can download the most
perfect and complete manual in
the world immediately.

Our support email:

ebooklibonline@outlook.com