

Section: ENGINE  
CRANKCASE

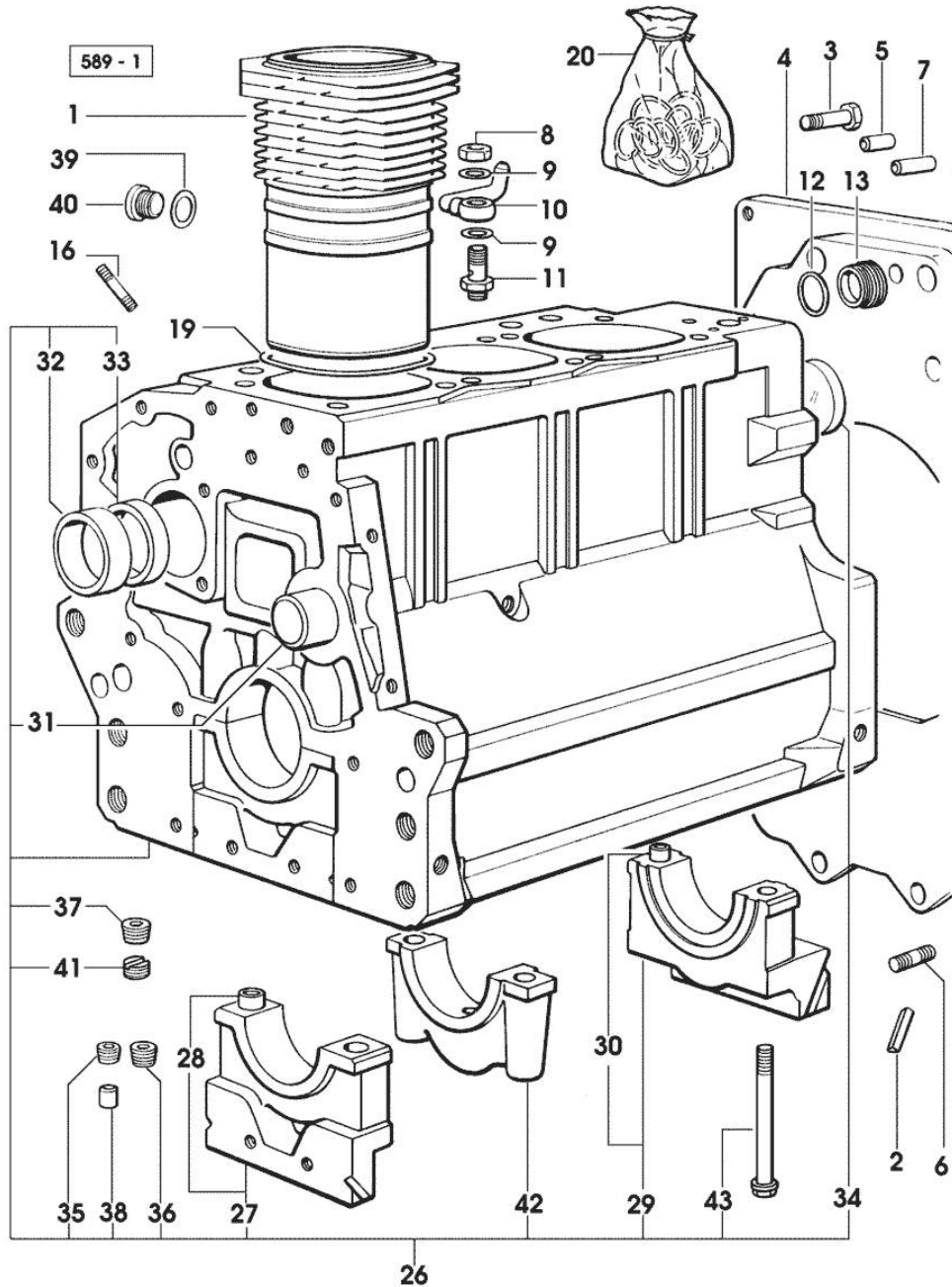


Fig.	P/n	QTY	Name
<b>Notes:</b> [ARGON 60]			
1	0.007.0762.0/50	3	engine cylinder
2	0.066.1152.0/10	4	gasket
3	2.0112.511.2	8	screw m 14 p.2 x 30
4	0.007.1882.0/40	1	flange
4	0.007.7752.0/10	1	flange - X ARGON 50 - X ARGON 60 - 70
5	2.1651.912.0	2	cylindrical plug 12x28
6	2.0432.255.7	2	stud bolt m 12 p.1.75-1.25x25
7	2.1651.917.0	1	cylindrical plug 12x40
8	2.1099.108.2	3	special nut m 10 p.1
9	2.1560.006.0	6	gasket 10.2 x 16
10	0.086.1550.2	3	sprayer nozzle
11	0.065.1160.3/20	3	valve
12	2.1539.047.0	1	special oil seal 26.7x1.78
13	2.3199.405.2	1	plug m 28 p.1.5
16	2.0432.003.7	9	stud bolt m 8 p.1.25 / p.1 x 20
19	2.1539.130.0/10	3	special oil seal 117.07x3.53
20	0.085.0050.6/10	1	gasket set - X ARGON 50 - 60 - FOR ENGINE MOUNTING
20	0.351.0050.6/10	1	gasket set - X ARGON 70 - FOR ENGINE MOUNTING
26	0.007.1150.6/10	1	crankcase * 2415 <= X ARGON 50 * 2051 <= X ARGON 60 * 3925 <= X ARGON 70 - N.1 - 085.1750.2/10 - 009.7871.0
27	0.065.1112.7	1	support
28	2.1699.165.0	1	bush 12.3x15x16
29	0.065.1116.3	1	support
30	2.1699.165.0	1	bush 12.3x15x16
31	0.066.1151.0	1	pin
32	0.065.1141.0	1	special bushing 59X55X30
33	0.065.1140.0	3	special bushing 59X55X20
34	2.3179.012.0	1	plug 60
35	2.3130.001.1	9	plug 1/8" gas
36	2.3130.002.1	2	plug 1/4" gas
37	2.3130.003.1	7	plug 3/8" gas
38	2.3199.092.0	3	plug 8 x 12

**CRANKCASE**

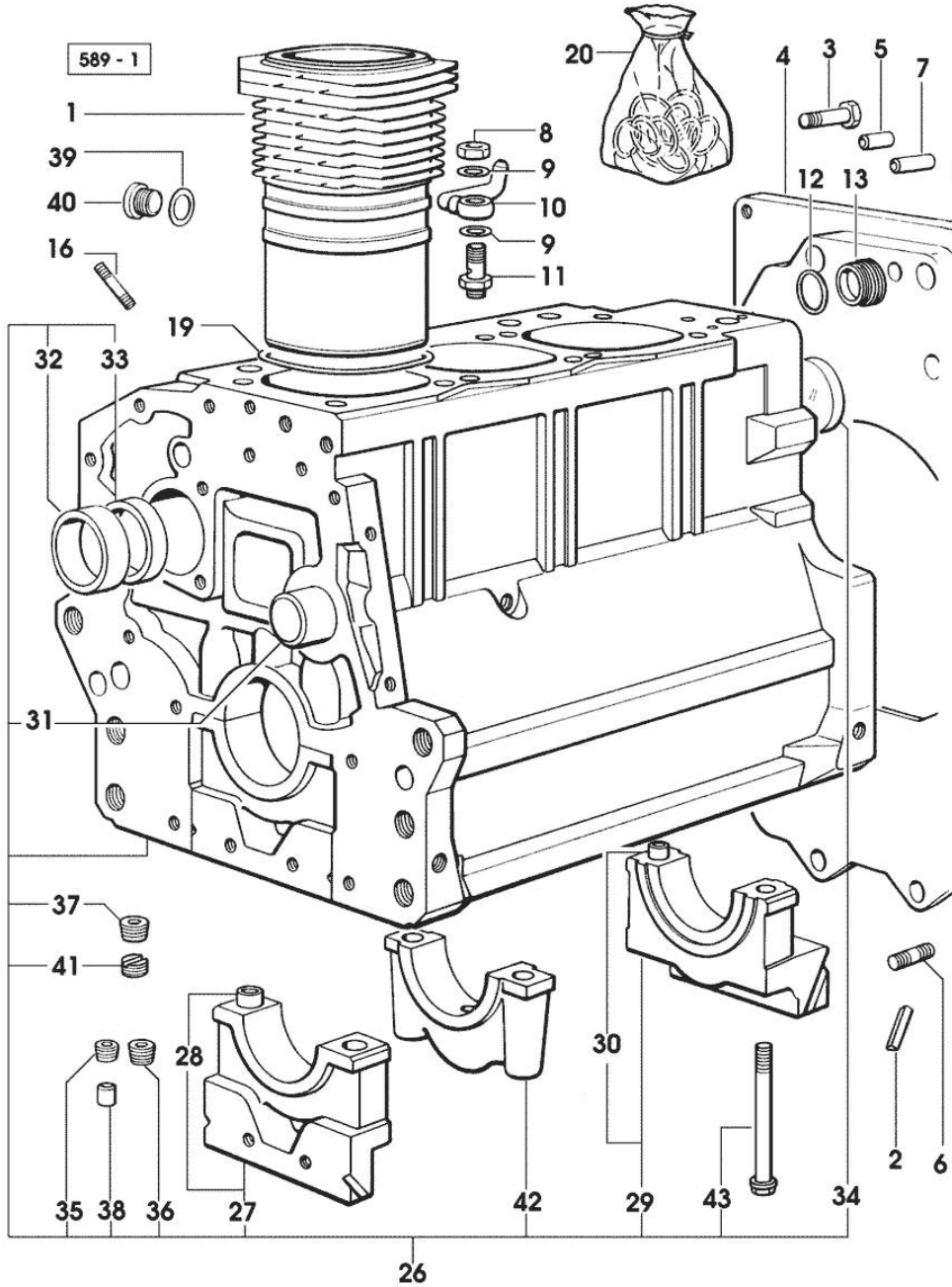


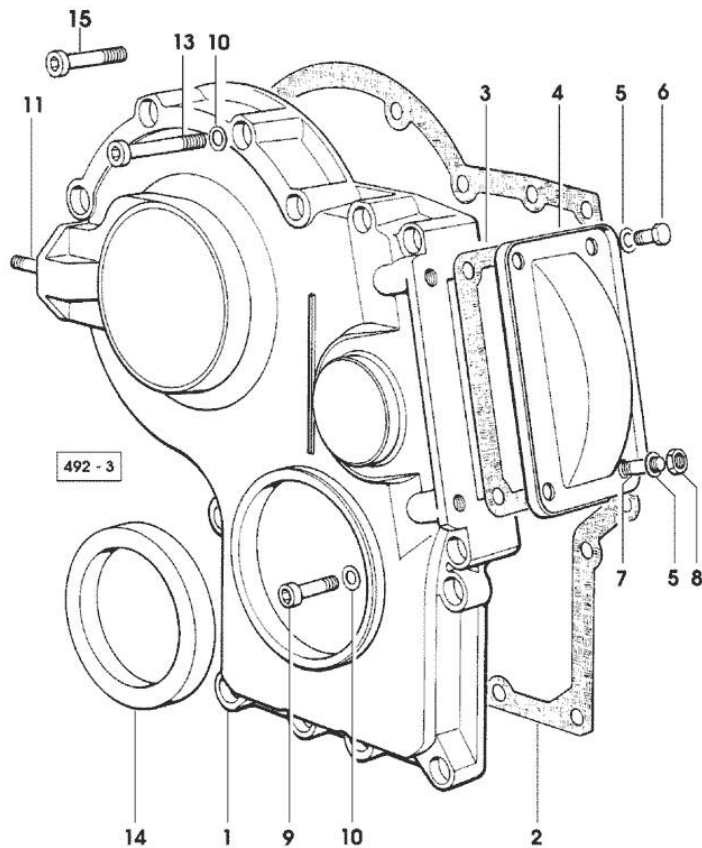
Fig.	P/n	QTY	Name
39	2.1560.017.0	1	gasket 22.2 x 27
40	2.3120.002.4	1	plug m 22 x 1.5 2415 <= X ARGON 50 2051 <= X ARGON 60 3925 <= X ARGON 70
41	2.1324.011.0	1	plug
42	0.065.1114.0/10	2	support
43	0.065.1117.0	8	screw m 12 x 100

Section: ENGINE  
TIMING CASE

Fig.	P/n	QTY	Name
------	-----	-----	------

Notes:  
[ARGON 60]

1	0.065.1132.0/60	1	guard
2	0.065.1150.0/30	1	gasket
3	0.065.1152.0	1	gasket
4	0.065.1151.0	1	cover
5	2.1470.004.2	4	lock washer 8
6	2.0112.205.2	2	screw m 8 p.1.25 x 16
7	2.0432.003.7	2	stud bolt m 8 p.1.25 / p.1 x 20
8	2.1011.405.2	2	nut m 8 p.1
9	2.0312.208.2	8	screw m 8 p.1.25 x 25
10	2.1480.014.1	15	washer 8
11	2.0432.003.7	2	stud bolt m 8 p.1.25 / p.1 x 20
13	2.0312.214.1	3	screw m 8 p.1.25 x 40
14	2.1529.141.0	1	special oil seal
15	2.0312.219.2	4	screw m 8 p.1.25x65



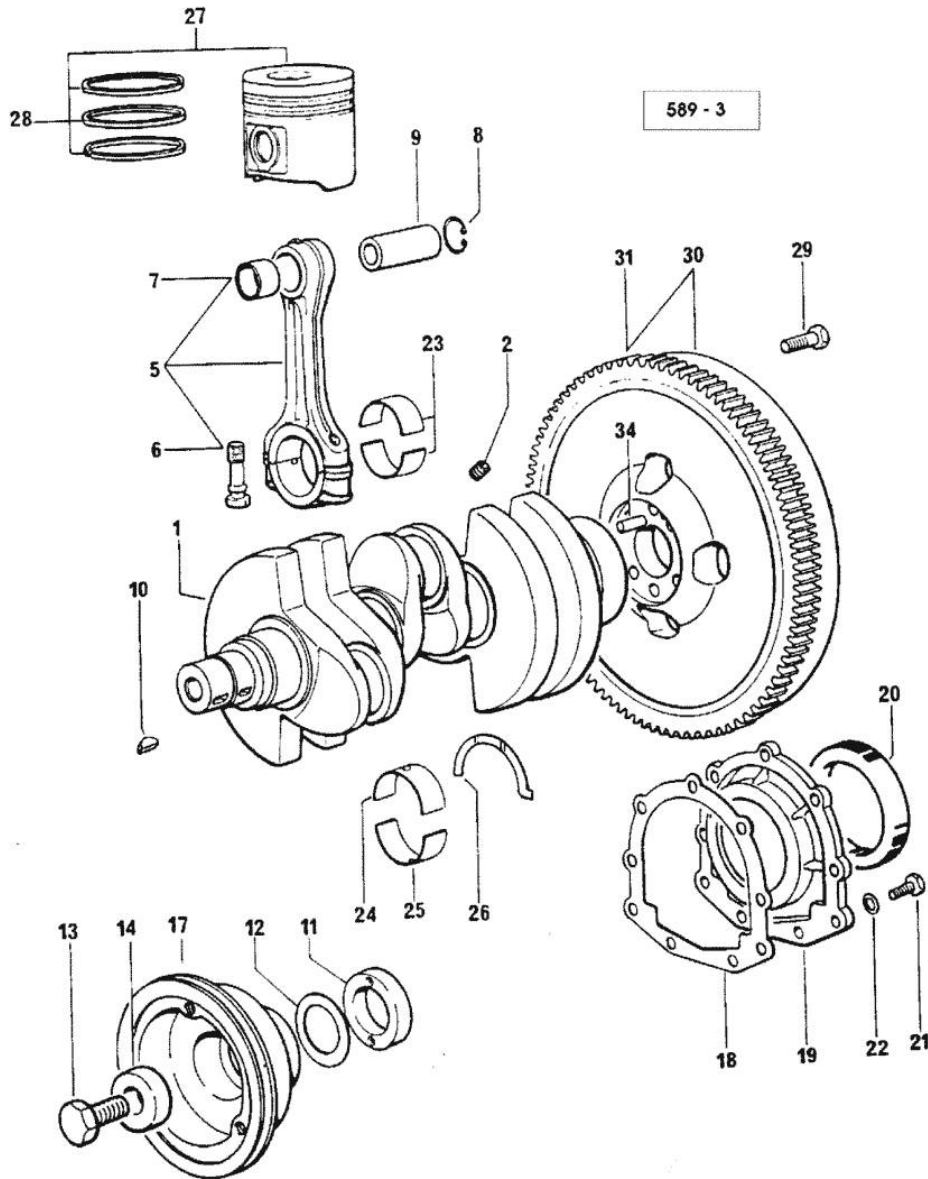
Section: ENGINE

CRANKSHAFT

Fig.	P/n	QTY	Name
------	-----	-----	------

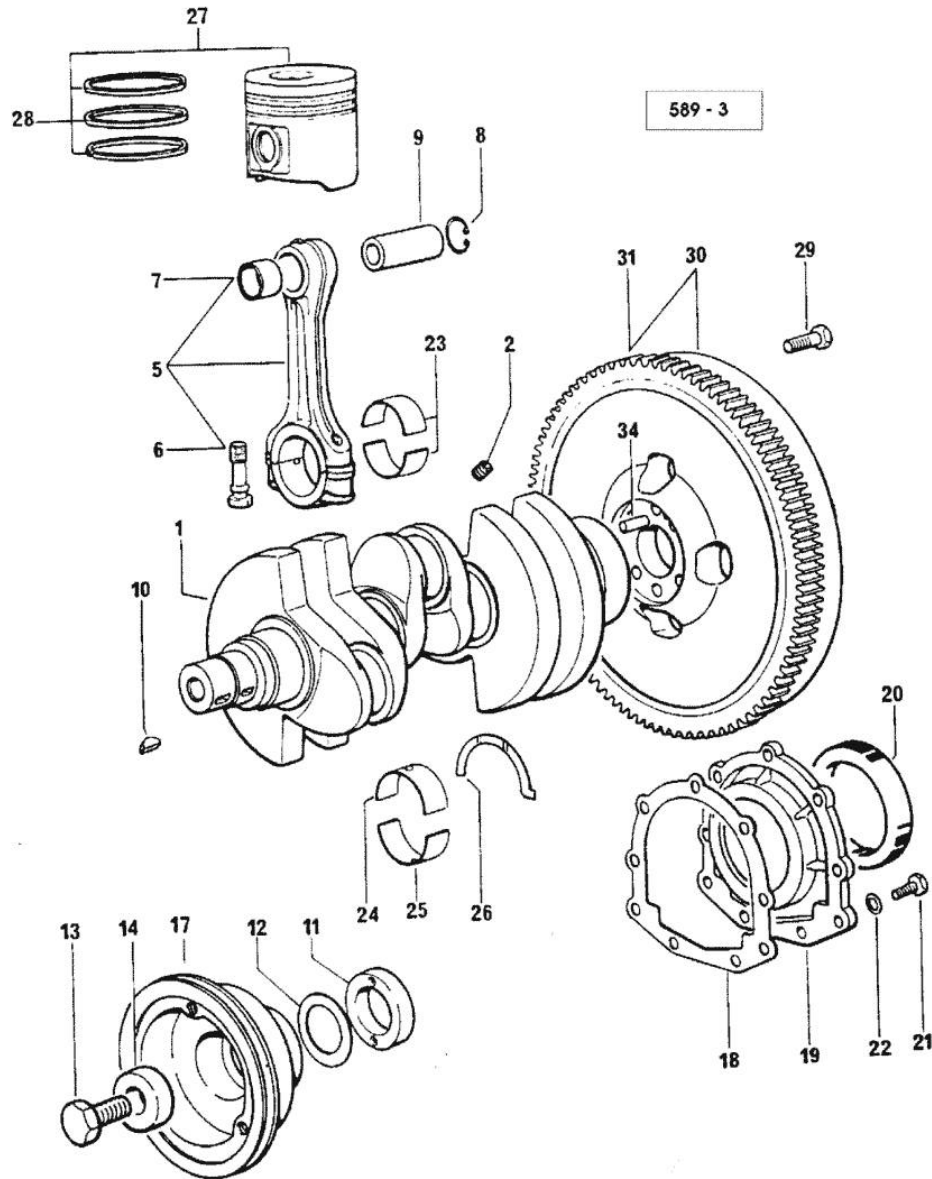
Notes:  
[ARGON 60]

1	0.007.1554.0/20	1	crankshaft
2	2.3130.001.1	3	plug 1/8" gas
5	0.078.1220.3/30	3	engine connecting rod
6	2.0399.213.0	6	screw m 12 p.1.25x61.5
7	2.1559.114.0/10	3	special bushing
8	2.1411.014.1	6	circlip 35
9	0.078.1236.0	3	piston pin Ø 18 / Ø 35 / L = mm 86
10	2.1720.006.0	2	key 4x6.5
11	0.085.1248.0/10	1	hub
12	2.1589.189.0	3	shoulder ring mm 1.00
13	2.0399.144.7/10	1	screw m 20 p.1.5x51
14	2.1599.524.7	1	washer 21x60x12
17	0.007.1330.0/30	1	pulley
18	0.065.1254.0/20	1	gasket
19	0.007.1711.0/10	1	cover
20	2.1529.073.0	1	special oil seal 110x130x13
21	2.0112.207.2	9	screw m 8 p 1.25 x 20
22	2.1475.002.2	9	conical washer 8
23	0.065.1225.0	6	con.rod half bushing STANDARD - A = 28.75 -> 29.00
23	0.065.1225.7		con.rod half bushing - mm 0.25
23	0.065.1225.8		con.rod half bushing - mm 0.50
24	0.065.1215.0	4	main half bushing STANDARD
24	0.065.1215.7		main half bushing - mm 0.25
24	0.065.1215.8		main half bushing - mm 0.50
25	0.065.1216.0	4	main half bushing
25	0.065.1216.7		main half bushing - mm 0.25
25	0.065.1216.8		main half bushing - mm 0.50
26	0.065.1218.0	4	shim STANDARD
26	0.065.1218.7		shim + mm 0.10
26	0.065.1218.8		shim + mm 0.15
27	0.086.0060.6/30	3	complete piston
27	0.338.0060.6/20	3	complete piston
27	0.379.0060.6	3	complete piston
27	0.381.0060.6	3	complete piston
28	0.086.0052.6/10	1	piston ring set



Section: ENGINE  
**CRANKSHAFT**

Fig.	P/n	QTY	Name
28	0.338.0052.6	1	- X ARGON 50 - 60 piston ring set
29	2.0119.174.0/10	6	screw m 12 p.1.25x45
30	0.007.1616.3/10	1	flywheel - X ARGON 50
30	0.007.1617.3/10	1	flywheel - X ARGON 60 - 70
31	0.069.1242.0	1	crown wheel Z = 121
34	2.1652.915.0	1	cylindrical plug 12x35



Section: ENGINE

**CAMSHAFT**

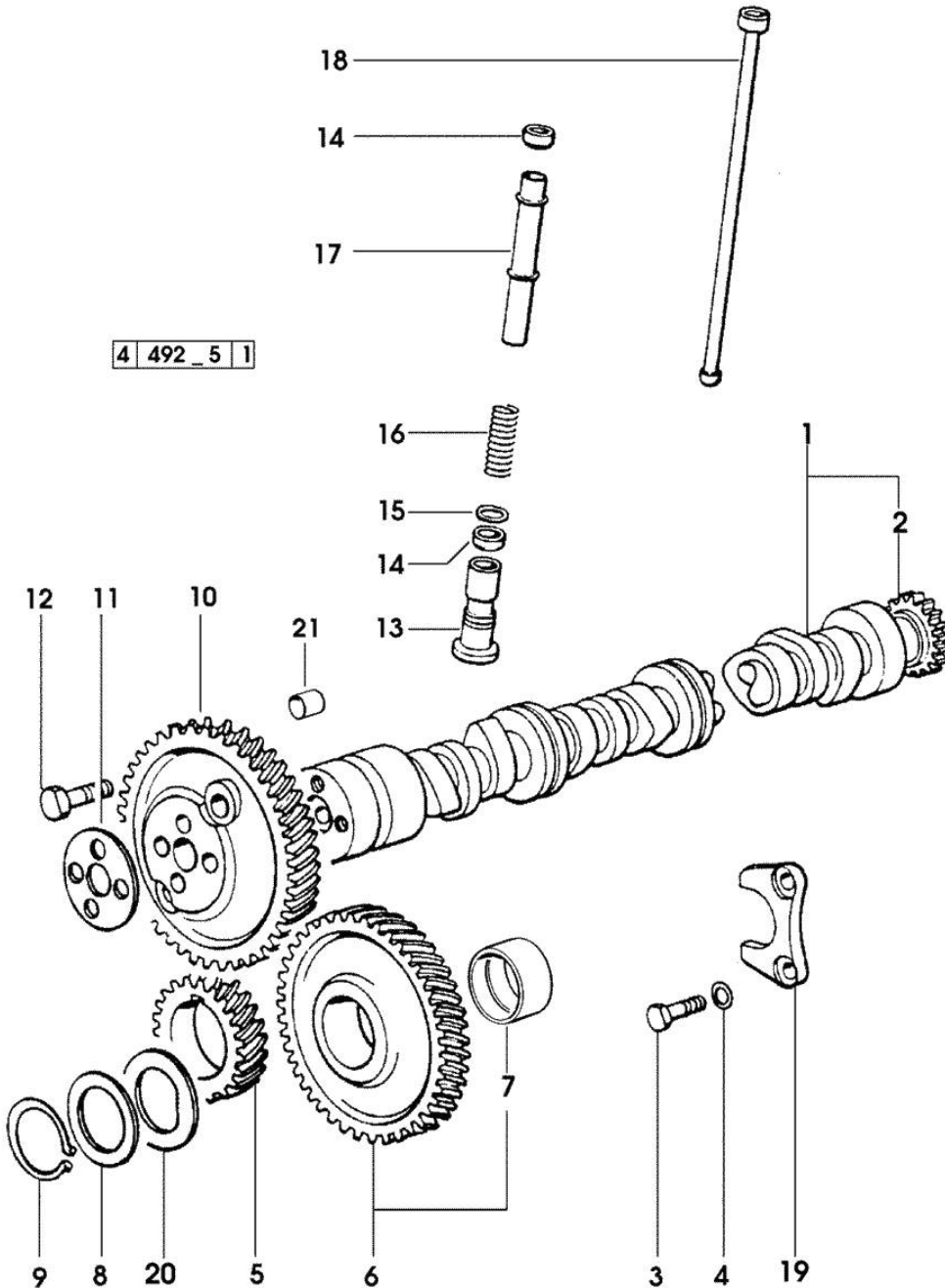


Fig.	P/n	QTY	Name
------	-----	-----	------

Notes:  
[ARGON 60]

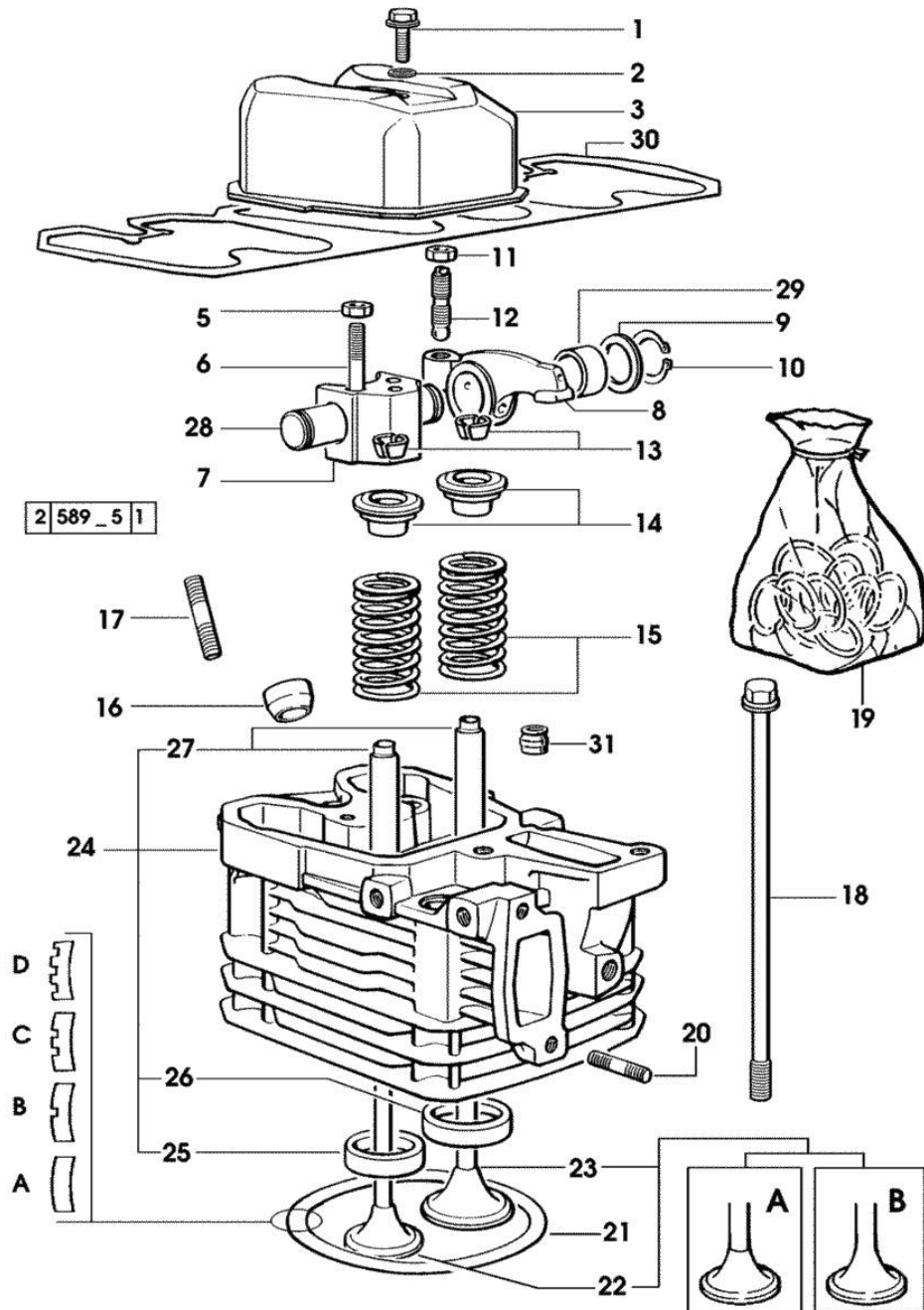
1	0.009.7456.3/10	1	camshaft - EXPORT U.S.A.
1	0.070.1310.3/40	1	camshaft
2	0.065.1324.0/10	1	gear Z = 32
3	2.0312.206.2	2	screw m 8 p 1.25 x 20
4	2.1480.014.1	2	washer 8
5	0.065.1323.0/30	1	gear Z = 29
6	0.007.1177.3/10		gear z = 57 - WITH RED IDENTIFICATION STAMP
6	0.007.1178.3/10		gear z = 57 - WITH YELLOW IDENTIFICATION STAMP
6	0.007.1179.3/10		gear z = 57 - WITH GREEN IDENTIFICATION STAMP
7	2.1559.185.0/10	1	bushing
8	0.065.1352.0	1	shim
9	2.1410.016.1	1	circlip 40
10	0.065.1354.0/20	1	gear z=58
11	0.065.1350.0	1	small disc
12	2.0132.207.2	4	screw m 10 p.1 x 25
13	0.065.1330.0	6	tappets
14	2.1569.114.0/10	12	gasket 14x18.5x8
15	2.1599.437.0	6	shoulder ring
16	2.4019.300.1/10	6	spring 18.5x52x2
17	0.065.1332.0	6	sleeve
18	0.065.1331.2	6	rod
19	0.065.1353.0	1	small plate
20	0.065.1351.0	2	shoulder ring
21	2.1559.398.0	1	bushing 10.5x13x12

Section: ENGINE  
CYLINDER HEAD

Fig.	P/n	QTY	Name
------	-----	-----	------

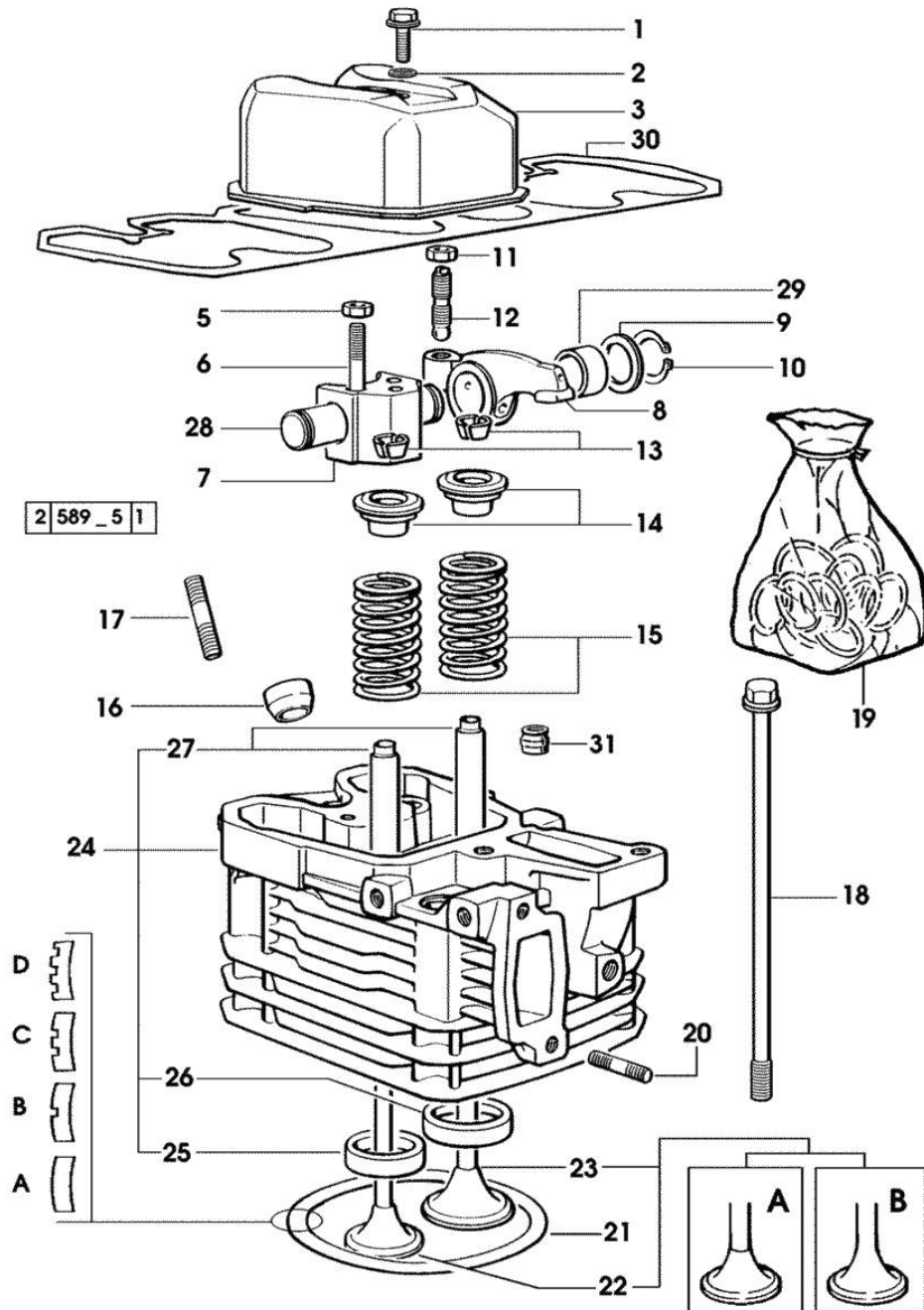
Notes:  
[ARGON 60]

1	2.0399.130.2	3	screw m 8 x 30 2798 <= X ARGON 50 2362 <= X ARGON 60 (...) <= X ARGON 70
1	2.0399.130.2/10	3	screw m 8x36x44 => 2799 X ARGON 50 => 2363 X ARGON 60 => (...) X ARGON 70
2	2.1569.170.0/10	3	gasket 8.2 x 14
3	0.007.1139.0/10	3	small cap * 2798 <= X ARGON 50 * 2362 <= X ARGON 60 * (...) <= X ARGON 70 - N.1 2.0399.130.2/10
5	2.1011.421.2	6	nut m 10 p.1.25
6	2.0432.163.7	6	stud bolt m 10 p.1.5 / p.1.25 x 45
7	0.066.1430.0/10	3	support
8	0.066.1432.0	6	rocker arm
9	2.1599.432.0	6	shoulder ring
10	2.1410.055.1	6	circlip 19
11	2.1011.405.2	2	nut m 8 p.1
12	0.021.1434.0	6	screw
13	0.074.1423.0	12	conical valve cotter
14	0.066.1425.0	6	cup
15	2.4019.287.0	6	spring
16	0.007.1122.0/10	3	bush L = mm 6,4
17	2.0432.161.7	3	stud bolt m 10 p.1.5 / p.1.25 x 40
18	0.065.1443.0/20	12	screw
19	0.085.0057.6		gasket set - FOR 1 CYLINDER VALVE GRINDING AND PISTON RINGS REPLACEMEN
20	2.0432.007.2	6	stud bolt m 8 p.1.25 / p.1 x 30
21	0.085.1450.0		head gasket mm 0.5 -A-
21	0.085.1451.0		head gasket mm 0.7 -B-
21	0.085.1452.0		head gasket mm 1.0 -C-
21	0.085.1453.0		head gasket mm 0.8 -D-
22	0.010.6022.0	3	exhaust valve mm 39.1 / Ø mm 9 - X ARGON 70 -> (...) = B
22	0.066.1421.0	3	exhaust valve - X ARGON 50 - 60 - X ARGON 70 (...) <- = A



Section: ENGINE  
CYLINDER HEAD

Fig.	P/n	QTY	Name
23	0.010.6016.0	3	inlet valve mm 43.63 / Ø mm 9 - X ARGON 50 - 60
23	0.010.6017.0	3	inlet valve mm 43.63 / Ø mm 9 - X ARGON 70 -> (...) = B
23	0.081.1420.0	3	inlet valve Ø mm 9 - X ARGON 70 (...) <- = A
24	0.007.1110.3/50	3	engine head - X ARGON 50 - 60 - X ARGON 70 (...) <- = A
24	0.007.1359.3/50	3	engine head - X ARGON 70 -> (...) = B
25	0.066.1427.0	3	valve seat
26	0.078.1426.0	3	valve seat
27	0.007.1779.0/10	6	valve guide
28	0.066.1431.0	3	pin
29	2.1559.021.0/40	6	bushing 15x19x22
30	0.069.1450.0/30	1	tappet gasket
31	2.1519.117.0	6	special oil seal



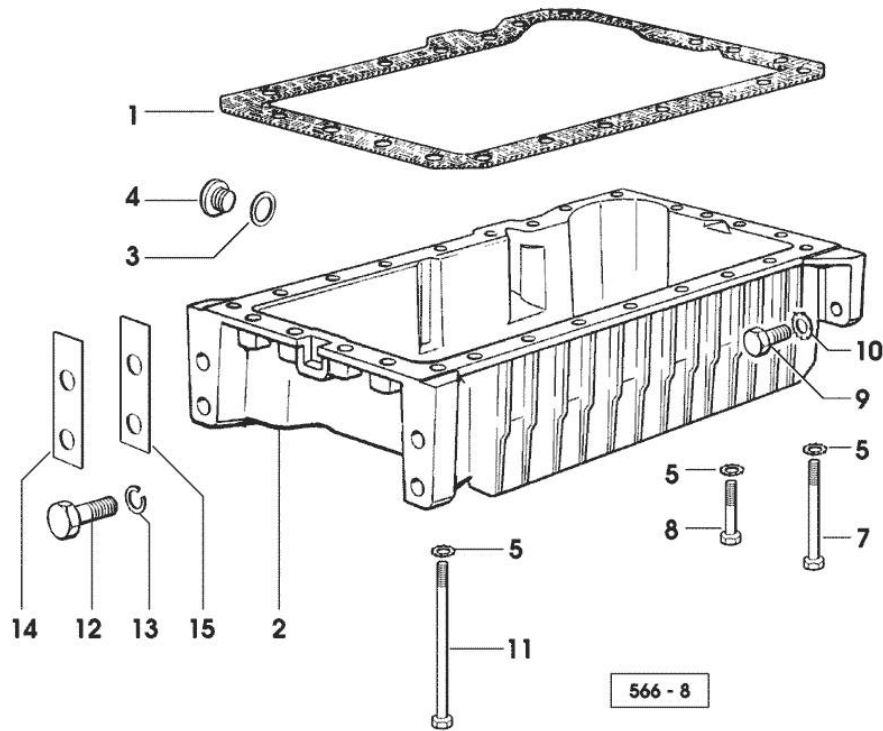


Section: ENGINE  
**LUBRICATION**

Fig.	P/n	QTY	Name
------	-----	-----	------

Notes:  
 [ARGON 60]

1	0.007.0614.0/10	1	gasket
2	0.007.1422.0/40	1	oil sump
3	2.1560.054.0	1	gasket 21 x 26
4	2.3199.001.2	1	plug 1/2" gas
5	2.1470.004.2	22	lock washer 8
7	2.0112.226.2	7	screw m 8 p.1.25 x 85
8	2.0112.215.2	13	screw m 8 p.1.25 x 40
9	2.0112.411.2	4	screw m 12 p.1.75 x 30
10	2.1470.007.2	4	lock washer 12
11	2.0112.239.2	2	screw m 8 p.1.25 x 150
12	2.0112.720.1	4	screw m 18 p.2.5 x 55
13	2.1475.007.7	4	washer 18
14	0.008.8586.0/10	4	shim mm 0.20
15	0.008.8587.0/10	8	shim mm 0.50

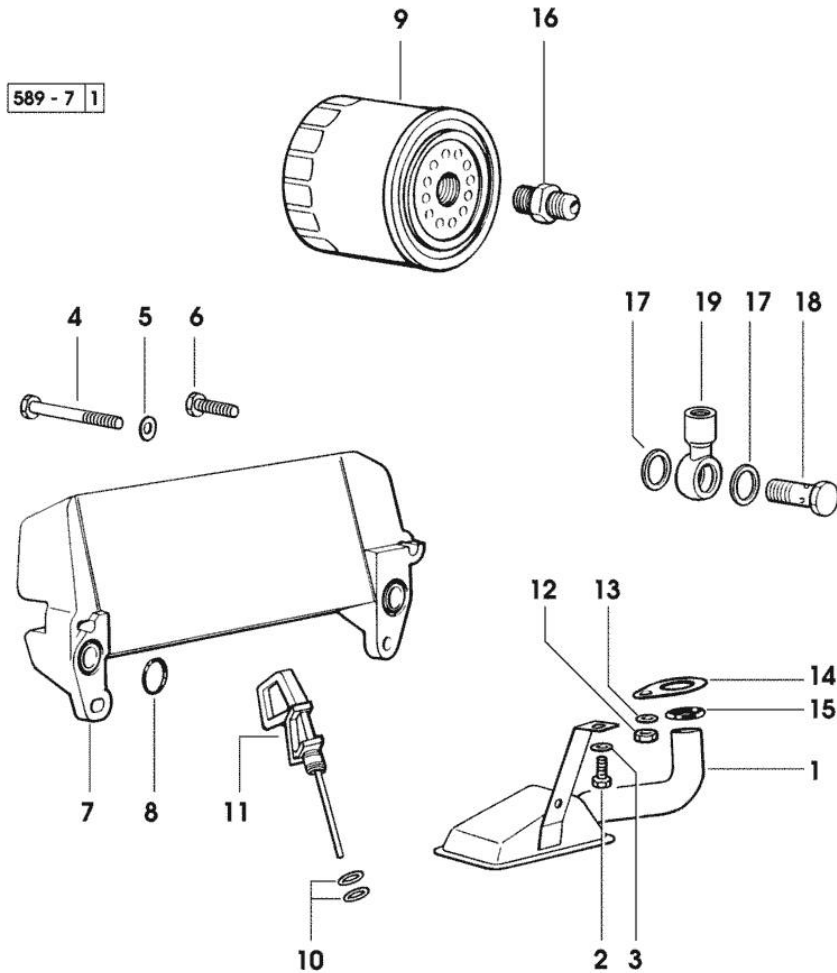


Section: ENGINE  
LUBRICATION

Fig.	P/n	QTY	Name
------	-----	-----	------

Notes:  
[ARGON 60]

1	0.007.1425.3	1	tube
2	2.0112.205.2	1	screw m 8 p.1.25 x 16
3	2.1470.004.2	1	lock washer 8
4	2.0312.216.2	2	screw m 8 p.1.25x50
5	2.1310.004.2	2	flat washer 8.4x17
6	2.0399.125.2/10	2	screw m 8 x 55
7	0.007.1369.3	1	oil cooler - X ARGON 50
7	0.007.7319.3	1	oil cooler - X ARGON 60 - 70
8	2.1539.048.0	2	special oil seal 20.35x1.78
9	0.044.1567.0	1	oil filter element - X ARGON 50 - 60
9	2.4419.340.0	1	oil filter element - X ARGON 70
10	2.1539.065.0	2	special oil seal 8.73 x 1.78
11	0.085.1513.2/20	1	dipstick
12	2.1011.105.2	1	nut m 8 p.1.25
13	2.1470.004.2	1	lock washer 8
14	0.065.1538.0	1	flange
15	2.1539.040.0	1	special oil seal 21.82 x 3.53
16	2.3339.307.0	1	pipe fitting m 22 p.1.5-3/4"
17	2.1560.008.0	2	gasket 12.2 x 18 - X ARGON 50 - 60
18	2.3339.448.2	1	pipe union m 12 p.1.75 - X ARGON 50 - 60
19	2.3249.014.2	1	pipe fitting m 12 p.1.5 - X ARGON 50 - 60

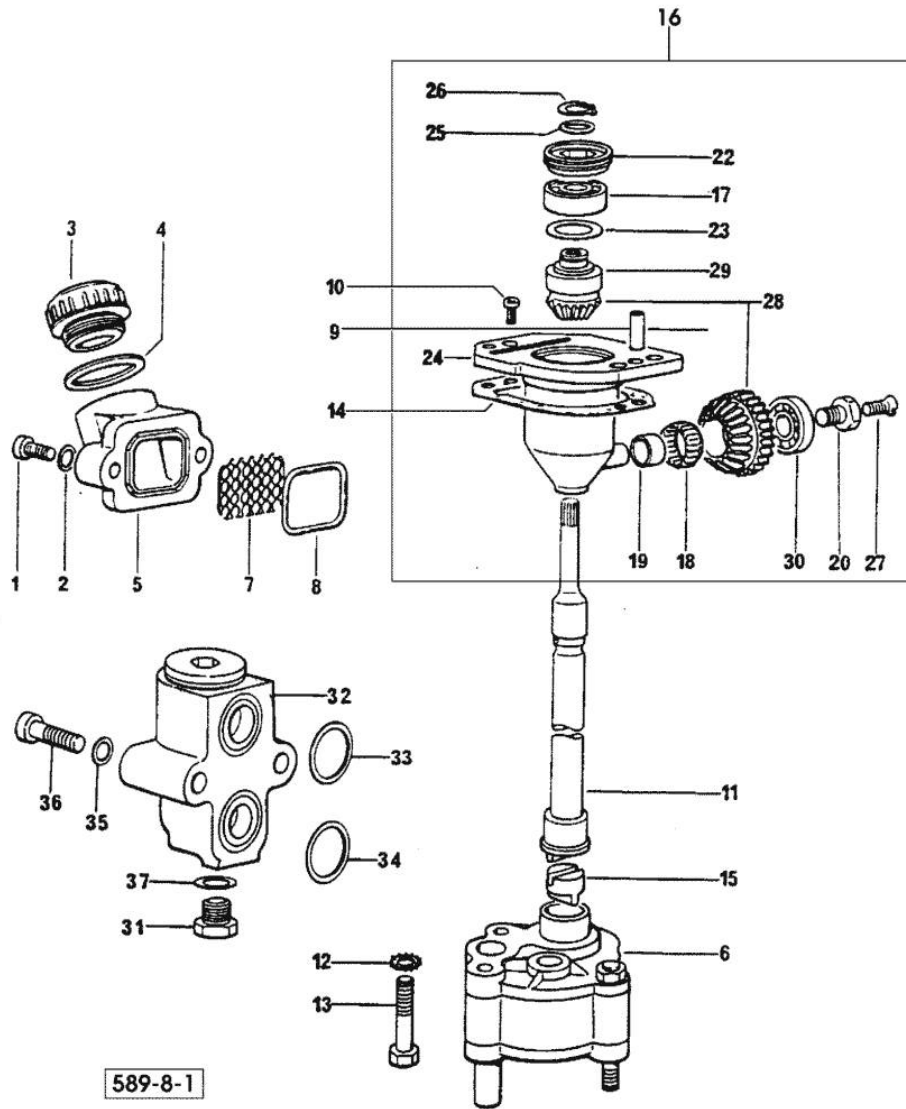


Section: ENGINE  
LUBRICATION

Fig.	P/n	QTY	Name
------	-----	-----	------

Notes:  
[ARGON 60]

1	2.0312.206.2	2	screw m 8 p 1.25 x 20
2	2.1480.014.1	2	washer 8
3	0.041.1135.4	1	plug 1" gas
4	2.1569.072.0	1	gasket 32 x 39.5 x 2
5	0.065.1565.0/10	1	pipe union
6	0.010.5481.4	1	oil pump
7	0.065.1567.0/10	1	filter
8	2.1539.042.0	1	special oil seal 47.35x1.78
9	2.1651.711.0	2	pin 8 x 14
10	2.0169.005.2	2	screw m 6 p.1 x 12
11	0.065.1569.0/40	1	shaft
12	2.1470.006.2	2	lock washer 10
13	2.0112.323.2	2	screw m 10 p.1.5x70
14	0.065.1560.0/20	2	gasket
15	0.065.1562.0/10	1	joint
16	0.075.1551.4/20	1	support
17	2.2020.001.0	1	ball bearing 15 x 32 x 8.00
18	2.2725.016.0	1	roller cage 15 x 21 x 12
19	2.2680.020.0	1	ring 12 x 15 x 12
20	2.0399.128.2/10	1	screw m 8 p.1 x 8
22	2.1219.025.2/10	1	ring nut m 36 p.1.5
23	2.1589.148.0	1	shoulder ring 28.2 x 31.8 x 0.5
23	2.1589.150.0	2	shoulder ring 28.2 x 31.8 x 0.1
23	2.1589.151.0	2	shoulder ring 28.2 x 31.8 x 0.15
24	0.075.1551.3/30	1	support
25	2.1589.146.0	2	shoulder ring 15.2 x 19 x 0.15
25	2.1589.147.0	2	shoulder ring 15.2 x 19 x 0.10
25	2.1589.153.0	1	shoulder ring 15.2 x 19 x 1.00
26	2.1410.057.1	1	circlip 15
27	2.0342.007.2	1	screw m 4 p.0.7x25
28	0.065.1558.6/10	1	bevel drive
29	0.065.1559.0	1	bush
30	2.2030.002.0	1	ball bearing 12 x 28 x 8
31	2.3110.403.1	1	plug m 14 p.1.5x12
32	0.065.1581.4/20	1	valve
33	2.1539.048.0	1	special oil seal 20.35x1.78
34	2.1539.072.0	1	special oil seal 23.52 x 1.78
35	2.1480.014.1	2	washer 8
36	2.0312.215.1	2	screw m 8 p.1.25 x 45
37	2.1560.010.0	1	gasket 14.2 x 20



Section: ENGINE  
**LUBRICATION**

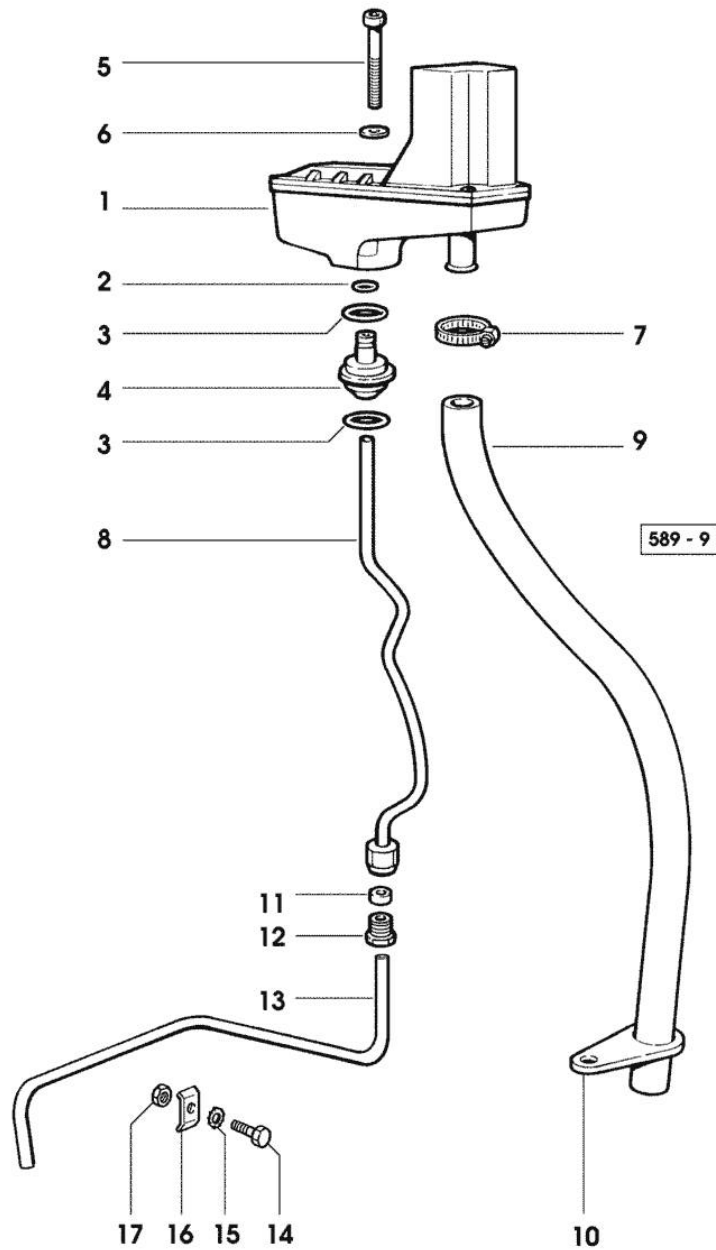


Fig.	P/n	QTY	Name
<b>Notes:</b>			
[ARGON 60]			
1	0.066.1552.4/10	1	sediment bowl ☞ 01.00.40
2	2.1539.074.0	1	special oil seal 7.66 x 1.78
3	2.1539.072.0	2	special oil seal 23.52 x 1.78
4	0.066.1558.0	1	bush
5	2.0312.221.2	2	screw m 8 p.1.25x75
6	2.1480.014.1	2	washer 8
7	2.6859.073.2	1	clamp
8	0.066.1557.2	1	tube
9	0.066.1559.0	1	tube
10	0.075.1151.0	1	bracket
11	2.3350.003.1	1	nosepiece 8
12	2.3339.418.1	1	pipe fitting m 12 p.1
13	0.007.1427.0	1	tube
14	2.0112.007.2	1	screw m 6 p.1 x 20
15	2.1470.002.2	1	lock washer 6
16	0.002.8816.0	1	small plate
17	2.1011.103.2	1	nut m 6 p.1

Section: ENGINE  
**LUBRICATION**

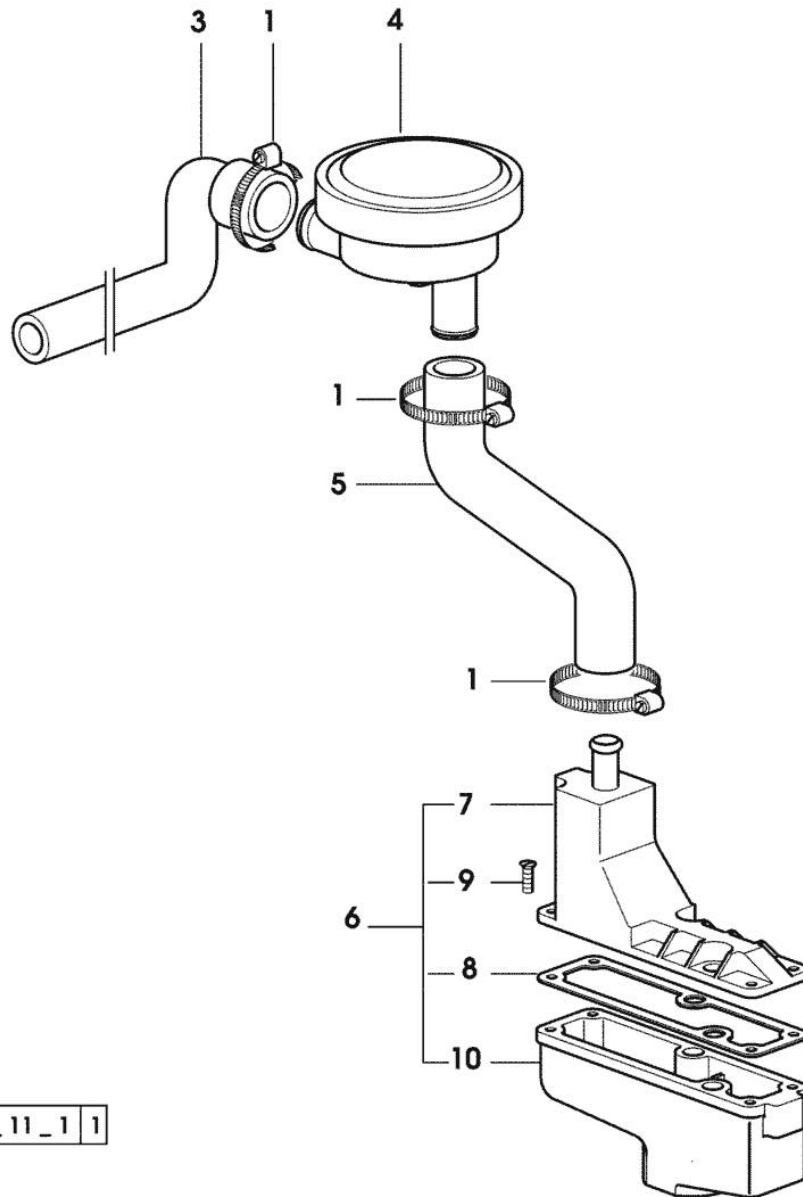


Fig.	P/n	QTY	Name
------	-----	-----	------

Notes:  
 [ARGON 60]

1	2.6850.004.0	4	clamp
3	0.011.0996.0	1	tube - X ARGON 50 - 60
3	0.011.1242.0	1	tube - X ARGON 70
4	0.010.6507.0	1	valve
5	0.011.1026.0	1	tube - X ARGON 50 - 60
5	0.011.1231.0	1	tube - X ARGON 70
6	0.011.1030.4	1	sediment bowl
7	0.011.1028.3	1	cover
8	0.066.1554.0/10	1	gasket
9	2.0351.203.6	4	screw 3.5x9.5
10	0.011.1030.0	1	sediment bowl

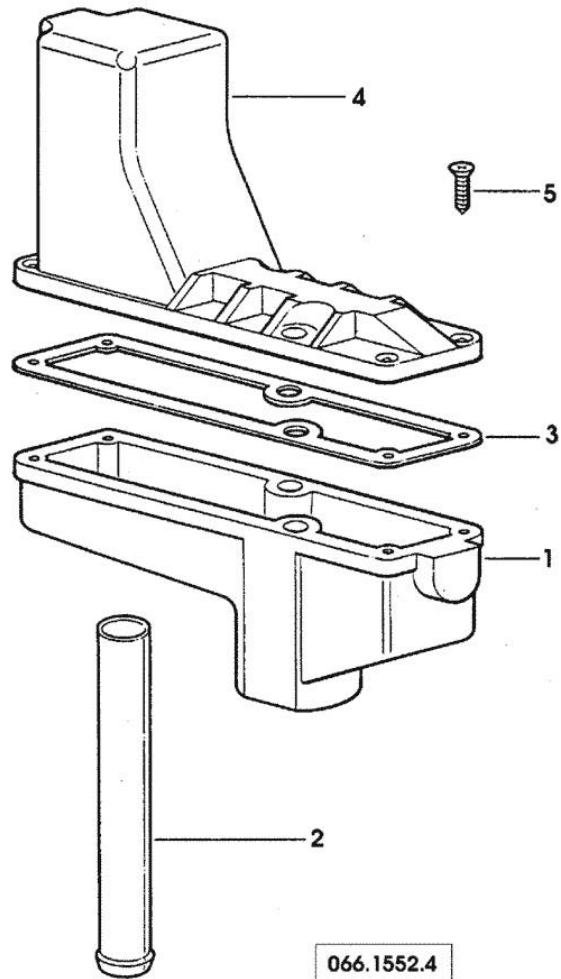
4 566\_11\_1 1

**OIL VAPORS SEDIMENT BOWL PARTS**

Fig.	P/n	QTY	Name
------	-----	-----	------

Notes:  
[ARGON 60]

1	0.066.1552.0	1	sediment bowl
2	0.066.1555.0	1	tube
3	0.066.1554.0/10	1	gasket
4	0.066.1553.0	1	cover
5	2.0351.203.2	4	screw 3.5x9.5



Section: ENGINE  
**FUEL SUPPLY SYSTEM**

2 589\_11 2

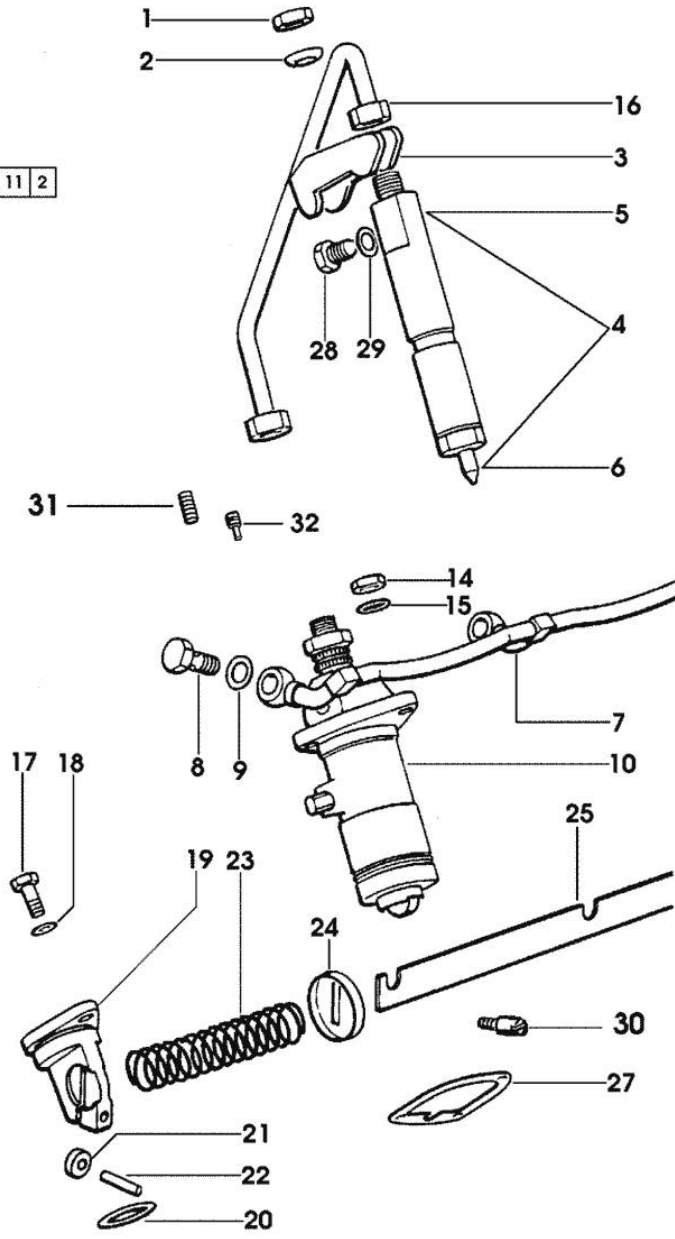
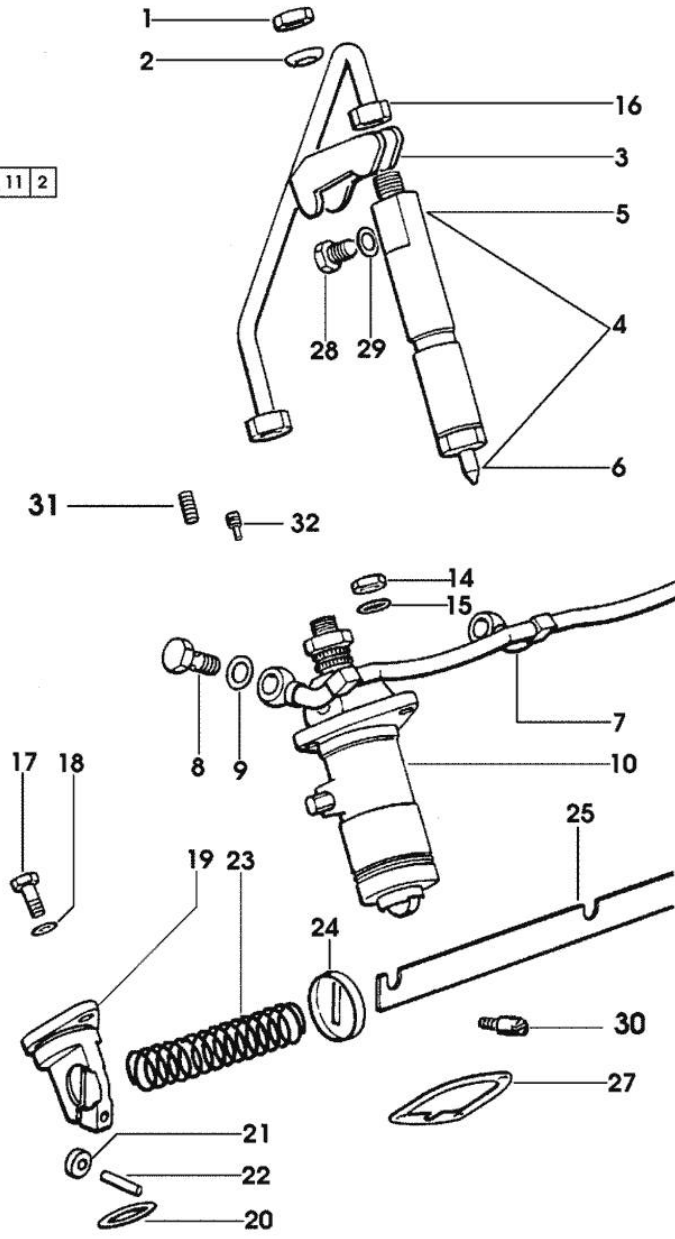


Fig.	P/n	QTY	Name
<b>Notes:</b>			
[ARGON 60]			
1	2.1011.421.2	3	nut m 10 p.1.25
2	2.1599.454.0	3	shoulder ring 10.5x17x7.5
3	0.011.5275.0/20	3	bracket
4	2.4719.200.0/10	3	injector assembly BOSCH
4	2.4719.320.0/10	3	injector assembly BOSCH - EXPORT U.S.A.
5	2.4719.190.0	1	nozzle holder BOSCH ☞ 2.4719.190.0 ☞ 01.00.52
6	2.4729.100.0	1	nozzle BOSCH
6	2.4729.170.0/10	3	nozzle BOSCH - EXPORT U.S.A.
7	0.007.1485.3	1	tube 2008 <= X ARGON 50 1724 <= X ARGON 60 3610 <= X ARGON 70
7	0.069.1658.3/20	1	tube => 2009 X ARGON 50 => 1725 X ARGON 60 => 3611 X ARGON 70
8	2.3339.637.2	3	pipe fitting m 8 p.1x22
9	2.1560.003.0	6	copper gasket 8.2 x 12
10	2.4619.030.0/10	1	injector pump - 555 - BOSCH - EXPORT U.S.A. ☞ 2.4619.030.0/10
10	2.4619.050.0/30	3	injector pump - 542 - BOSCH F 14 - 14/1 ☞ 2.4619.050.0/30
14	2.1011.405.2	9	nut m 8 p.1
15	2.1599.458.0/10	9	shoulder ring 8.4x18x2
16	0.065.1650.3	3	tube
17	2.0112.207.2	2	screw m 8 p 1.25 x 20
18	2.1310.004.2	2	flat washer 8.4x17
19	0.065.1693.0/20	2	support
20	2.1530.072.0	2	oil seal 26.70x1.78
21	0.065.1660.0	2	roller
22	2.1652.507.0	2	pin 6x16
23	2.4019.314.1/20	1	spring 21.5x76x1
24	0.065.1659.0	1	stop
25	0.069.1613.3/20	1	rod
27	0.065.1655.0/10	3	shim mm 0.1

**FUEL SUPPLY SYSTEM**

Fig.	P/n	QTY	Name
27	0.065.1656.0/10	12	shim mm 0.20
28	2.3119.024.2	3	plug m 6
29	2.1560.001.0	3	gasket 6.2x10
30	2.1699.383.0	1	pin
31	2.0512.102.7	3	screw m 6 p.1 x 8
32	2.3199.270.0	3	plug 5.9x7.8 - EXPORT U.S.A.

2 589\_11 2





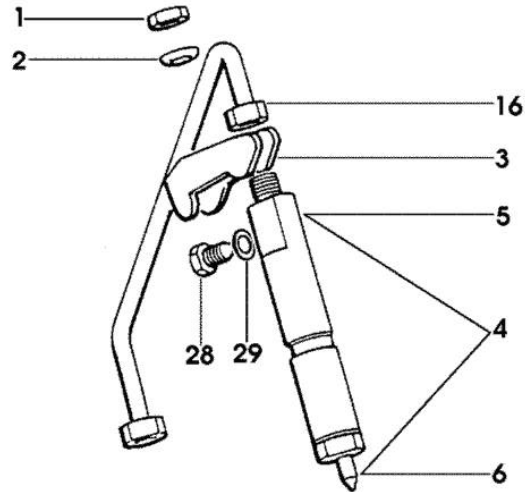
Section: ENGINE

FUEL SUPPLY SYSTEM

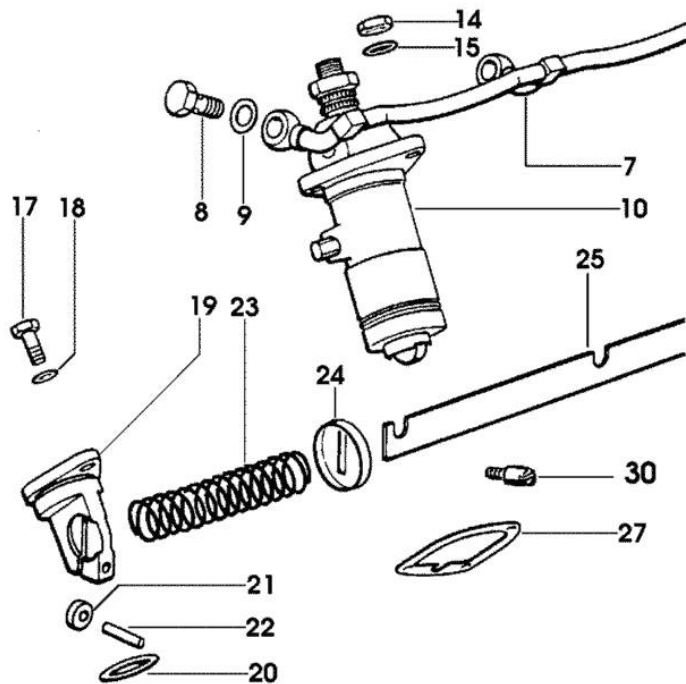
Fig.	P/n	QTY	Name
------	-----	-----	------

Notes:  
[ARGON 60]

1	2.1011.421.2	3	nut m 10 p.1.25
2	2.1599.454.0	3	shoulder ring 10.5x17x7.5
3	0.011.5275.0/20	3	bracket
4	2.4719.260.0	3	injector assembly OMAP
5	2.4719.270.0	1	inj. holder OMAP ☞ 2.4719.270.0 ☞ 01.00.55
6	2.4729.130.0	1	nozzle OMAP
7	0.007.1485.3	1	tube 2008 <= X ARGON 50 1724 <= X ARGON 60 3610 <= X ARGON 70
7	0.069.1658.3/20	1	tube => 2009 X ARGON 50 => 1725 X ARGON 60 => 3611 X ARGON 70
8	2.3339.637.2	3	pipe fitting m 8 p.1x22
9	2.1560.003.0	6	copper gasket 8.2 x 12
10	2.4619.041.0	3	injector pump "A" OMAP ☞ 2.4619.041.0 ☞ 01.00.64
10	2.4619.041.1	3	injector pump "B" OMAP ☞ 2.4619.041.1 ☞ 01.00.64
10	2.4619.041.2	3	injector pump "C" OMAP ☞ 2.4619.041.2 ☞ 01.00.64
10	2.4619.041.3	3	injector pump "D" OMAP ☞ 2.4619.041.3 ☞ 01.00.64
10	2.4619.041.4	3	injector pump "E" OMAP ☞ 2.4619.041.4 ☞ 01.00.64
14	2.1011.405.2	9	nut m 8 p.1
15	2.1599.458.0/10	9	shoulder ring 8.4x18x2
16	0.065.1650.3	3	tube
17	2.0112.207.2	2	screw m 8 p 1.25 x 20
18	2.1310.004.2	2	flat washer 8.4x17
19	0.065.1693.0/20	2	support
20	2.1530.072.0	2	oil seal 26.70x1.78
21	0.065.1660.0	2	roller



589 - 11 - 1

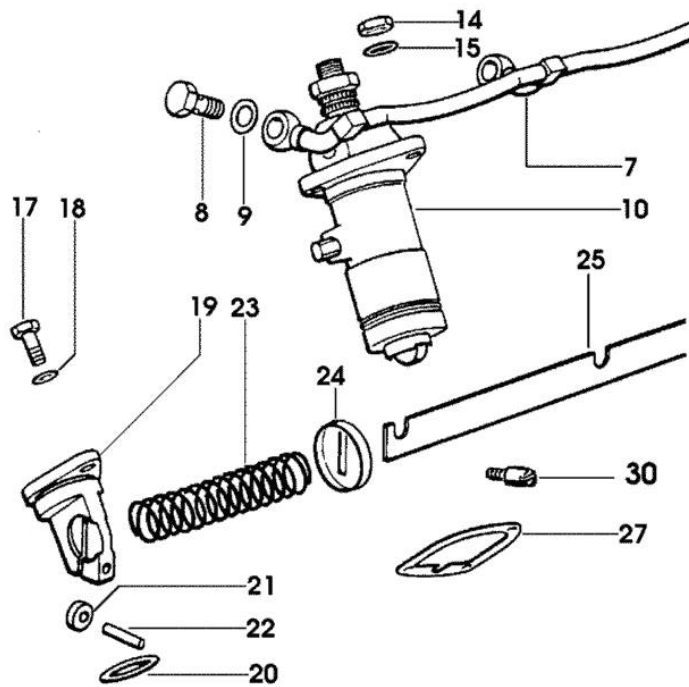
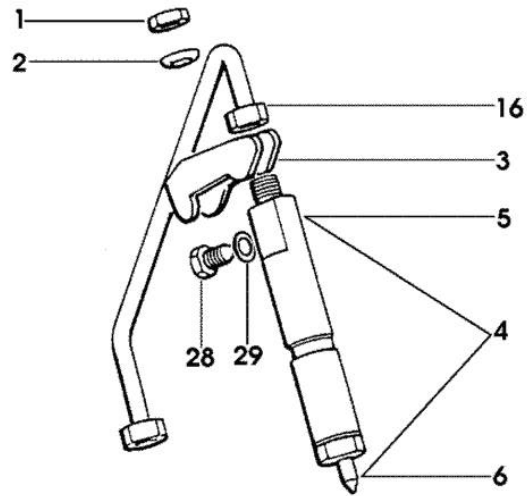


Section: ENGINE

**FUEL SUPPLY SYSTEM**

Fig.	P/n	QTY	Name
22	2.1652.507.0	2	pin 6x16
23	2.4019.314.1/20	1	spring 21.5x76x1
24	0.065.1659.0	1	stop
25	0.069.1613.3/20	1	rod
27	0.065.1655.0/10	3	shim mm 0.1
27	0.065.1656.0/10	12	shim mm 0.20
28	2.3119.024.2	3	plug m 6
29	2.1560.001.0	3	gasket 6.2x10
30	2.1699.383.0	1	pin

589 - 11 - 1

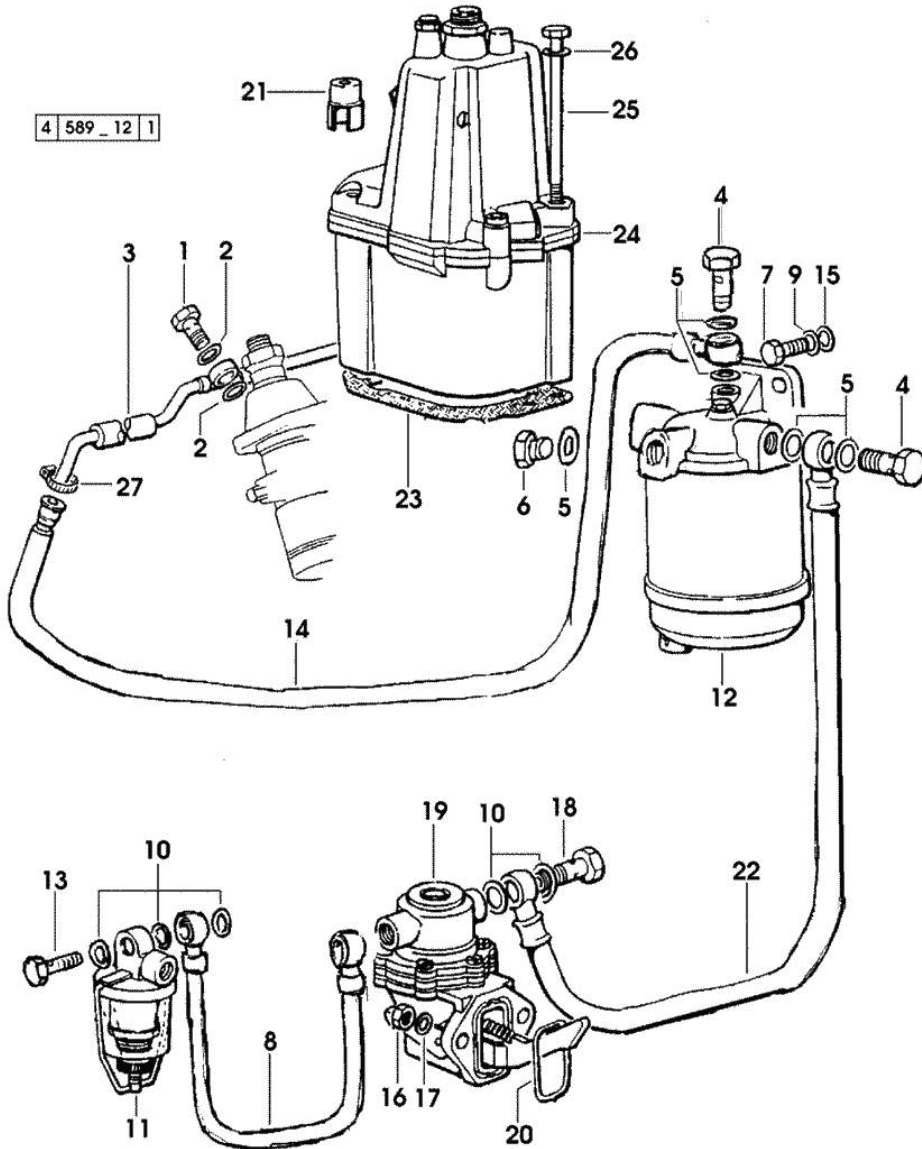


Section: ENGINE  
**FUEL SUPPLY SYSTEM**

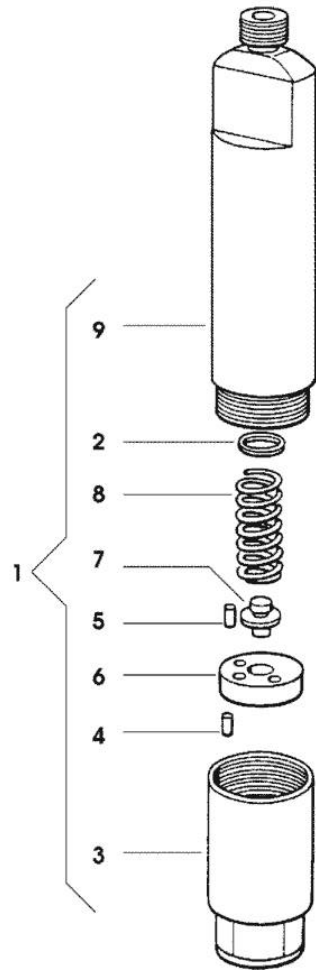
Fig.	P/n	QTY	Name
------	-----	-----	------

Notes:  
 [ARGON 60]

1	2.3339.118.1	3	pipe union m 12 p.1.5
2	2.1560.008.0	6	gasket 12.2 x 18
3	0.007.1483.3/20	1	tube
4	2.3332.004.1	2	pipe union m 14 p.1.5
5	2.1560.010.0	6	gasket 14.2 x 20
6	2.3110.403.1	2	plug m 14 p.1.5x12
7	2.0112.307.2	2	screw m 10 p.1.5 x 20
8	0.007.0290.2/10	1	tube
9	2.1310.006.2	2	flat washer 10.5x21
10	2.1561.007.0	5	copper gasket 14,8x22.2
11	2.4319.220.0	1	precleaner ☞ 2.4319.220.0 ☞ 01.00.67
12	2.4319.230.0	1	fuel filter ☞ 2.4319.230.0 ☞ 01.00.70
13	2.3339.040.2	1	pipe union m 14 p.1.5x45
14	0.007.1894.3	1	tube
15	2.1470.006.2	2	lock washer 10
16	2.1011.405.2	2	nut m 8 p.1
17	2.1470.004.2	2	lock washer 8
18	2.3339.357.2/10	1	pipe union m 14 p.1.5x28
19	2.4519.300.0	1	feed pump ☞ 2.4519.300.0 ☞ 01.00.73
20	2.1539.045.0	1	special oil seal 37.77x2.62
21	0.070.1655.0	1	cap
22	0.007.1764.3/10	1	tube
23	0.009.3880.0/20	1	gasket
24	0.085.1650.4/50	1	regulator - X ARGON 50 - 60 F 18-19 ☞ 0.085.1650.4/50 ☞ 0.085.1650.4/50
24	0.086.1650.4/40	1	regulator - X ARGON 70 F 18-19
25	2.0399.103.2	2	screw m 8 p 1.25 x 135
26	2.1480.014.1	2	washer 8
27	2.6850.003.0	1	clamp 16-25



**INJECTOR NOZZLE HOLDER COMPONENTS**



2.4719.190.0
492 - 17

Fig.	P/n	QTY	Name
------	-----	-----	------

**Notes:**

[ARGON 60]

1	2.4719.190.0	1	nozzle holder BOSCH ☞ 2.4719.190.0
2	2.4719.170.1	1	shim
3	2.4719.150.1	1	ring nut
4	2.4719.172.0	2	roll pin
5	2.4719.171.9	2	roll pin
6	2.4719.171.8	1	small disc
7	2.4719.171.7	1	pin
8	2.4719.171.6	1	spring
9	0.000.0000.1		cannot be supplied

Thank you so much for reading.  
Please click the “Buy Now!”  
button below to download the  
complete manual.



After you pay.

You can download the most  
perfect and complete manual in  
the world immediately.

Our support email:

[ebooklibonline@outlook.com](mailto:ebooklibonline@outlook.com)