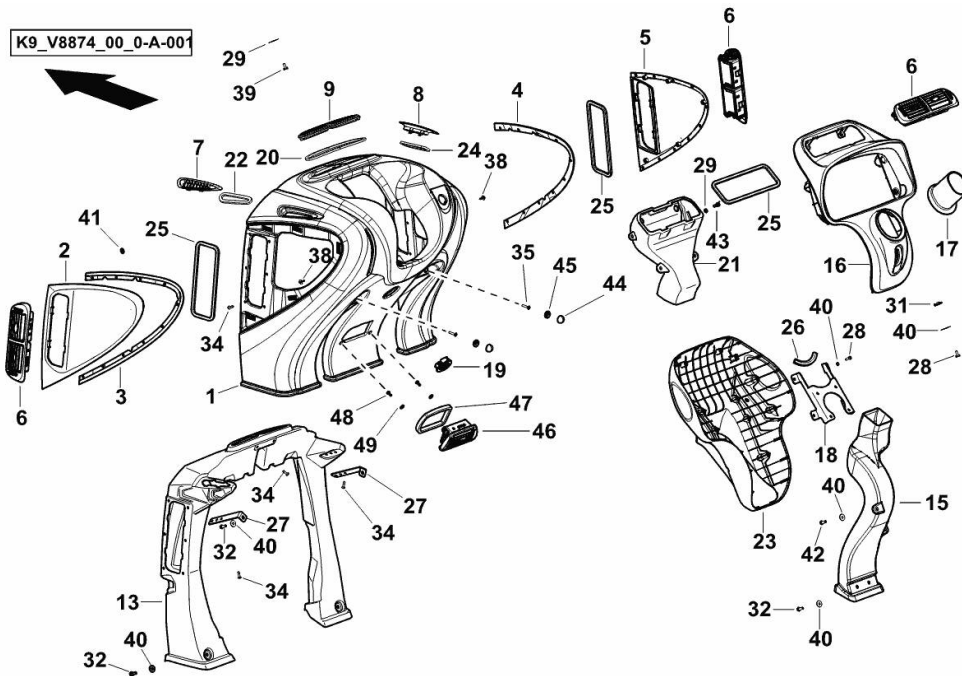


DASHBOARD

Fig.	P/n	QTY	Name
------	-----	-----	------

Notes:

[AUDAX 220] 50001 <-



1	0.020.6528.2	1	dashboard
2	0.020.2774.2	1	panel sx/lh/li
3	0.019.0491.0/10	1	fascia sx/lh/li
4	0.019.0492.0/10	1	fascia dx/rh/re
5	0.020.2775.2	1	panel dx/rh/re
6	0.020.2771.4/10	3	vent
7	0.020.2776.0	1	air inlet
8	0.020.2777.0	1	air inlet
9	0.020.2773.0	1	vent
13	0.019.2655.0/20	1	air duct
15	0.019.4778.0/20	1	air duct
16	0.020.2778.0	1	instrument holder
17	0.020.2769.0	1	cover
18	0.019.2661.0/10	1	bracket
19	0.020.2768.0	1	cover
20	0.019.4788.0	1	gasket
21	0.019.2656.0/20	1	air duct
22	0.019.4789.0	1	gasket
23	0.020.2772.2	1	front grille
24	0.019.4790.0	1	gasket
25	0.019.4793.0	3	gasket
26	0.019.5109.0	1	gasket
27	0.019.5110.0	2	bracket
28	2.0330.406.2	12	screw m 6 p.1.0 x 16
29	2.1310.001.2	19	flat washer 5.3 x 10
31	2.6999.064.6	2	special nut m 6
32	2.0114.102.2	6	screw m 5x10
34	2.1856.307.0	18	rivet 4.8x12
35	2.0342.107.3	2	screw m 5 p.0.8 x 25
38	0.019.4980.0	10	pin
39	2.0350.253.3	3	screw m 3.5 x 9.5 AB
40	2.1310.002.2	16	flat washer 6.4x12.5
41	2.6999.066.0	20	clip
42	2.0114.107.2	2	screw m 5 x 20, d933
43	2.0330.406.2	4	screw m 6 p.1.0 x 16
44	0.020.2685.0	2	cap
45	0.020.2686.0	2	washer
46	0.020.5311.4/10	1	vent
47	0.020.4107.0	1	gasket
48	2.0330.204.2	2	screw m 4.0 x 12
49	2.1312.001.2	2	washer 4

DASHBOARD

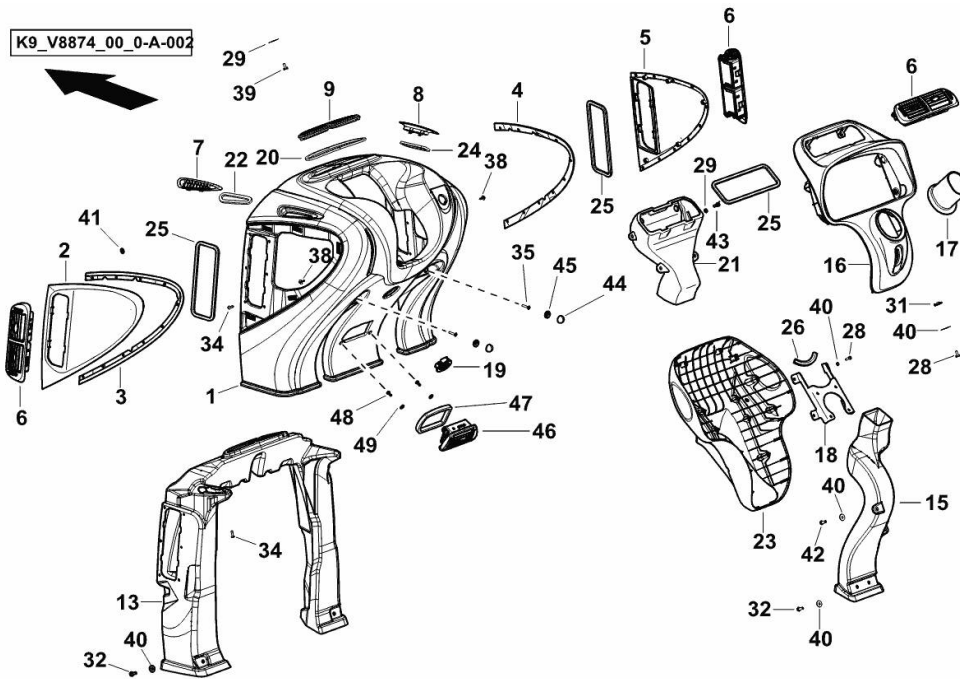


Fig.	P/n	QTY	Name
------	-----	-----	------

Notes:

[AUDAX 220] -> 50002

1	0.020.6528.2	1	dashboard
2	0.020.2774.2	1	panel sx/lh/li
3	0.019.0491.0/10	1	fascia sx/lh/li
4	0.019.0492.0/10	1	fascia dx/rh/re
5	0.020.2775.2	1	panel dx/rh/re
6	0.020.2771.4/10	3	vent
7	0.020.2776.0	1	air inlet
8	0.020.2777.0	1	air inlet
9	0.020.2773.0	1	vent
13	0.019.2655.0/30	1	air duct
15	0.019.4778.0/20	1	air duct
16	0.020.2778.0	1	instrument holder
17	0.020.2769.0	1	cover
18	0.019.2661.0/10	1	bracket
19	0.020.2768.0	1	cover
20	0.019.4788.0	1	gasket
21	0.019.2656.0/20	1	air duct
22	0.019.4789.0	1	gasket
23	0.020.2772.2/10	1	front grille
24	0.019.4790.0	1	gasket
25	0.019.4793.0	3	gasket
26	0.019.5109.0	1	gasket
28	2.0330.406.2	12	screw m 6 p.1.0 x 16
29	2.1310.001.2	19	flat washer 5.3 x 10
31	2.6999.064.6	2	special nut m 6
32	2.0114.102.2	6	screw m 5x10
34	2.1856.307.0	18	rivet 4.8x12
35	2.0342.107.3	2	screw m 5 p.0.8 x 25
38	0.019.4980.0	10	pin
39	2.0350.253.3	3	screw m 3.5 x 9.5 AB
40	2.1310.002.2	16	flat washer 6.4x12.5
41	2.6999.066.0	20	clip
42	2.0114.107.2	2	screw m 5 x 20, d933
43	2.0330.406.2	4	screw m 6 p.1.0 x 16
44	0.020.2685.0	2	cap
45	0.020.2686.0	2	washer
46	0.020.5311.4/10	1	vent
47	0.020.4107.0	1	gasket
48	2.0330.204.2	2	screw m 4.0 x 12
49	2.1312.001.2	2	washer 4

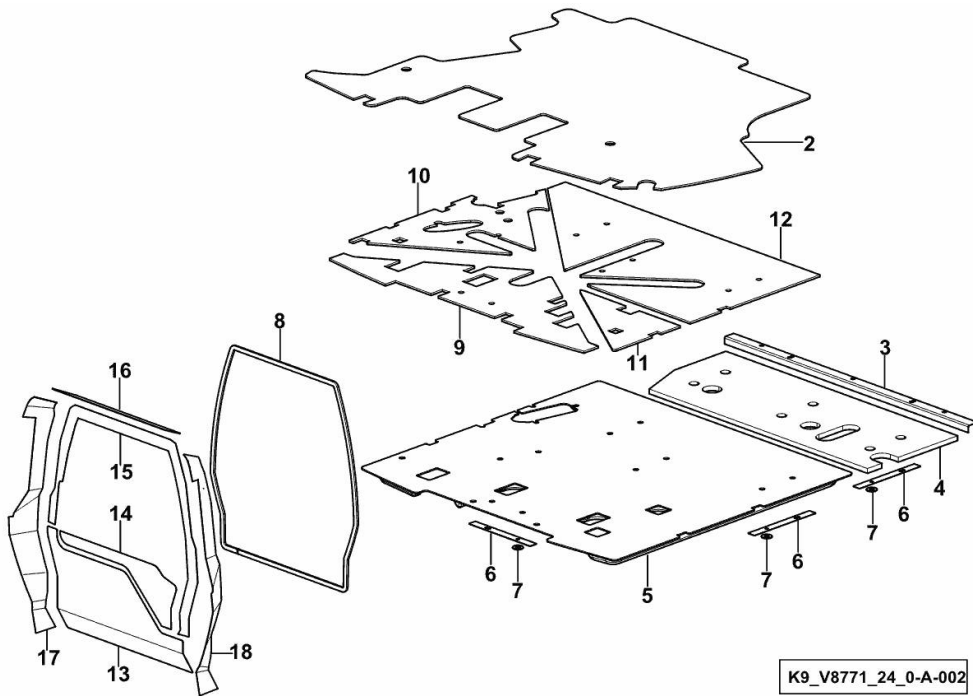
Section: G0 - BODYWORK - CAB
SOUND-ABSORBING PARTS

Fig.	P/n	QTY	Name
------	-----	-----	------

Notes:

[AUDAX 220] 50002 <-

2	0.019.6351.0/10	1	sound deadening
3	04451284	1	plate
4	0.021.8781.0	1	sound deadening
5	0.020.6583.0	1	sound deadening
6	04429905	8	shim
7	04422852	18	washer
8	0.017.1151.0	1	gasket
9	0.020.6585.0	1	sound deadening
10	0.020.6588.0	1	sound deadening
11	0.020.6589.0	1	sound deadening
12	0.020.6590.0	1	sound deadening
13	0.020.6593.0	1	sound deadening
14	0.020.6595.0	1	sound deadening
15	0.020.6596.0	1	sound deadening
16	0.020.6607.0	1	sound deadening
17	0.020.6608.0	1	sound deadening
18	0.020.6609.0	1	sound deadening



K9_V8771_24_0-A-002

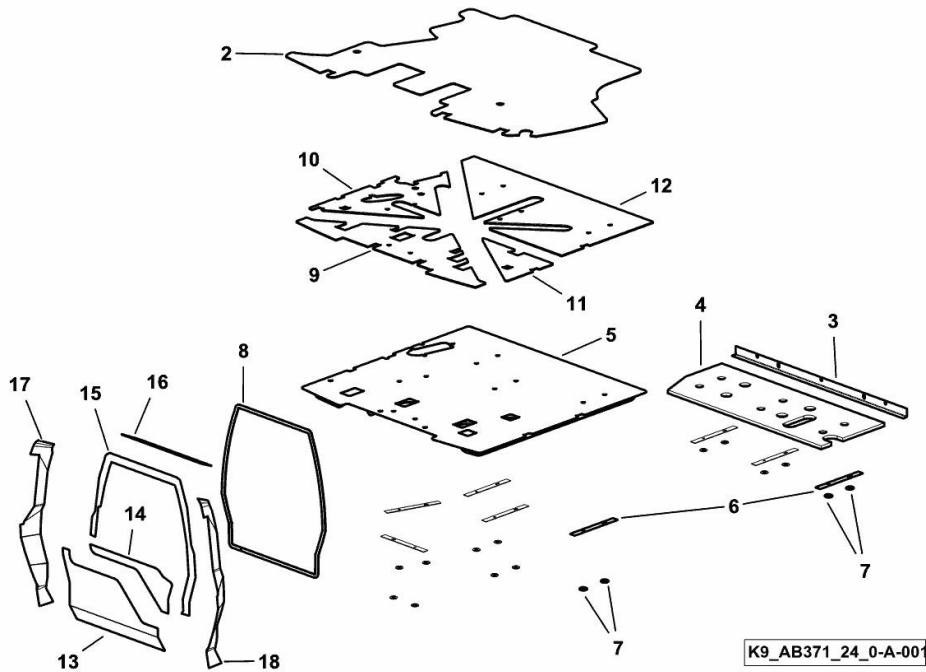
Section: G0 - BODYWORK - CAB
SOUND-ABSORBING PARTS

Fig.	P/n	QTY	Name
------	-----	-----	------

Notes:

[AUDAX 220] -> 50003

2	0.019.6351.0/10	1	sound deadening
3	04451284	1	plate
4	0.021.8780.0	1	sound deadening
5	0.020.6583.0	1	sound deadening
6	04429905	8	shim
7	04422852	18	washer
8	0.017.1151.0	1	gasket
9	0.020.6585.0	1	sound deadening
10	0.020.6588.0	1	sound deadening
11	0.020.6589.0	1	sound deadening
12	0.020.6590.0	1	sound deadening
13	0.020.6593.0	1	sound deadening
14	0.020.6595.0	1	sound deadening
15	0.020.6596.0	1	sound deadening
16	0.020.6607.0	1	sound deadening
17	0.020.6608.0	1	sound deadening
18	0.020.6609.0	1	sound deadening



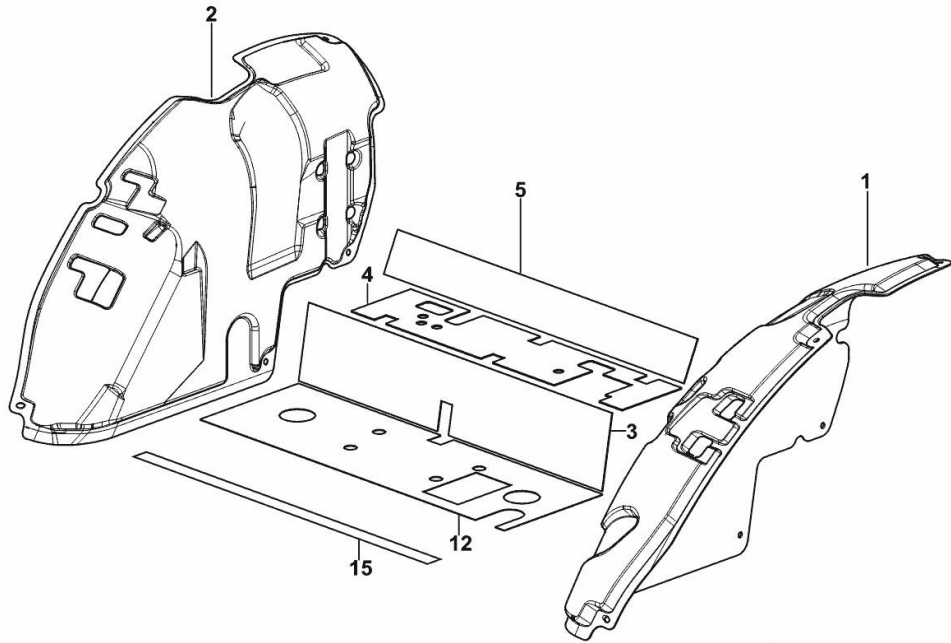
Section: G0 - BODYWORK - CAB
SOUND-ABSORBING PARTS

Fig.	P/n	QTY	Name
------	-----	-----	------

Notes:

[AUDAX 220]

1	0.019.5245.2/40	1	sound deadening sx/lh/li
2	0.019.5246.2/20	1	sound deadening dx/rh/re
3	04439939/10	1	sound deadening
4	0.019.6487.0/20	1	sound deadening
5	04439941/10	1	sound deadening
12	0.020.5680.0/10	1	sound deadening
15	01388899	0.5	gasket



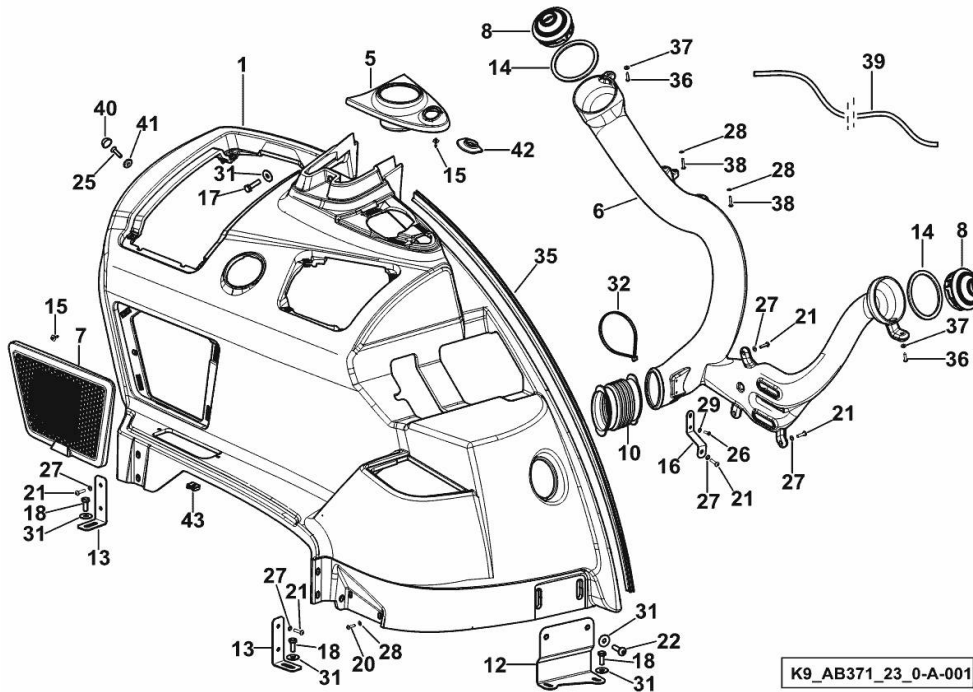
K9_AB371_25_0-A-001

CONSOLE SX/LH/LI

Fig.	P/n	QTY	Name
------	-----	-----	------

Notes:

[AUDAX 220]



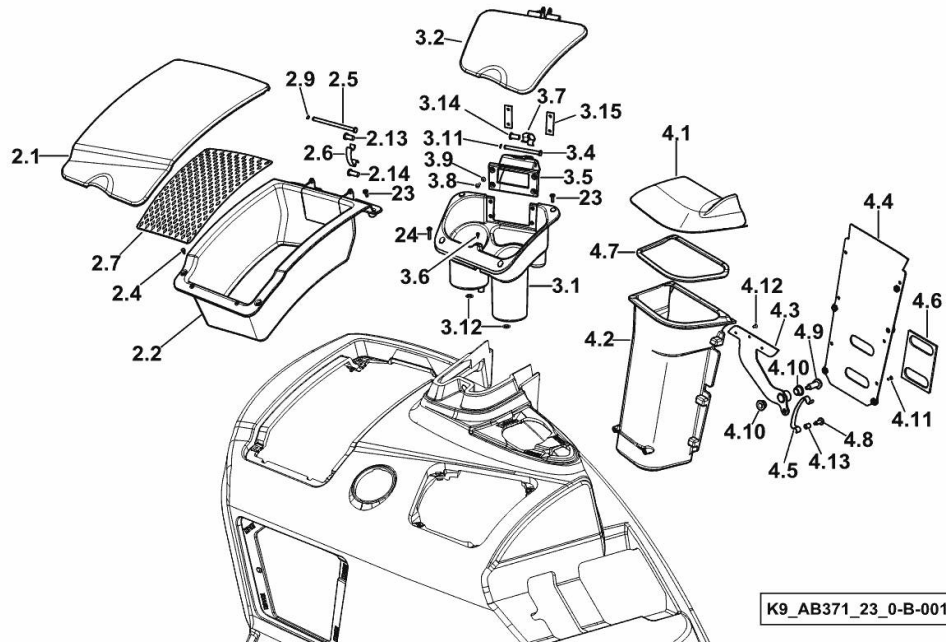
1	0.020.4398.2	1	console sx/lh/li
5	0.020.2993.2	1	front grille sx/lh/li
6	0.019.3506.0/20	1	air duct sx/lh/li
7	0.020.2994.2	1	grille sx/lh/li (50006 <-)
7	0.020.2994.2/10	1	grille sx/lh/li (-> 50007)
8	0.020.2718.4	2	vent
10	0.011.5581.0	1	boot
12	0.019.3505.3	1	bracket sx/lh/li
13	0.019.4880.3	2	bracket
14	0.019.4930.0/20	2	gasket
15	0.019.4980.0	7	pin
16	0.019.5064.3	1	bracket
17	01129113	1	screw m 8 x 30
18	01171763	4	screw m 8 p.1.25 x 20
20	2.0330.206.2	2	screw m4x16 d933
21	2.0330.307.2	8	screw m 5 x 20
22	2.0330.509.2	2	screw m 8 x 30
25	2.0342.207.6	1	screw m 6 p.1 x 25
26	2.0361.407.2	2	screw 4 x 12
27	2.1310.001.3	8	washer 5.3 x 10
28	2.1310.028.2	4	flat washer
29	2.1310.028.3	2	washer 4
31	2.1312.004.3	7	washer 8,4x24x2
32	2.6852.203.0	1	clamp 292 x 4.8
35	04418723	1	profile
36	2.0350.456.3	2	screw
37	2.1599.559.2	2	spacer
38	2.0332.207.2	2	screw m 4 p.0.7 x 20
39	04438115/10	1	gasket mm 2000
40	0.020.2685.0	1	cap
41	0.020.2686.0	1	washer
42	0.011.6003.0	1	gasket
43	04429941	2	special nut

CONSOLE SX/LH/LI

Fig.	P/n	QTY	Name
------	-----	-----	------

Notes:
[AUDAX 220]

2.1	0.020.3015.0	1	cover
2.2	0.020.3016.0	1	container
2.4	0.019.3490.0	2	rubber plug
2.5	0.019.4904.0	1	pin
2.6	0.019.4905.0/10	2	spring
2.7	0.019.4906.0	1	sound deadening mat (50003 <-)
2.7	0.021.0560.0	1	sound deadening mat (-> 50004)
2.9	2.1410.061.2	1	circlip 6, d128
2.13	0.019.6464.0	2	pin
2.14	0.019.7068.0	2	pin
3.1	0.020.3017.2	1	container
3.2	0.020.3011.4	1	cover
3.4	0.019.3488.0	1	pin
3.5	0.019.3489.0/10	1	hinge (50003 <-)
3.5	0.021.0562.0	1	hinge (-> 50004)
3.6	0.019.3490.0	1	rubber plug
3.7	0.019.4905.0/10	1	spring
3.8	2.0330.204.2	4	screw m 4.0 x 12
3.9	2.1310.028.2	4	flat washer
3.11	2.1410.061.2	1	circlip 6, d128
3.12	0.019.4910.0	2	gasket
3.14	0.019.6464.0	2	pin
3.15	0.020.1916.0	2	spacer
4.1	0.020.3008.0/10	1	cover
4.2	0.019.2427.2/10	1	container
4.3	0.019.3500.2/20	1	bracket
4.4	0.019.3502.3	1	bracket
4.5	0.019.3503.0/10	1	spring
4.6	0.019.4935.0	1	gasket
4.7	0.019.4936.0	1	gasket
4.8	0.019.4939.0	2	pin
4.9	0.019.4941.0	1	pin
4.10	0.019.5013.0	2	bushing
4.11	2.0342.001.3	6	screw m 4 p.0.7 x 30
4.12	2.0342.022.6	3	screw m4x0.7x8
4.13	2.2840.014.0	2	bushing 6x8x10
23	2.0332.204.3	6	screw m 4 p.0.7 x 12
24	2.0332.207.3	2	screw m 4 x 20



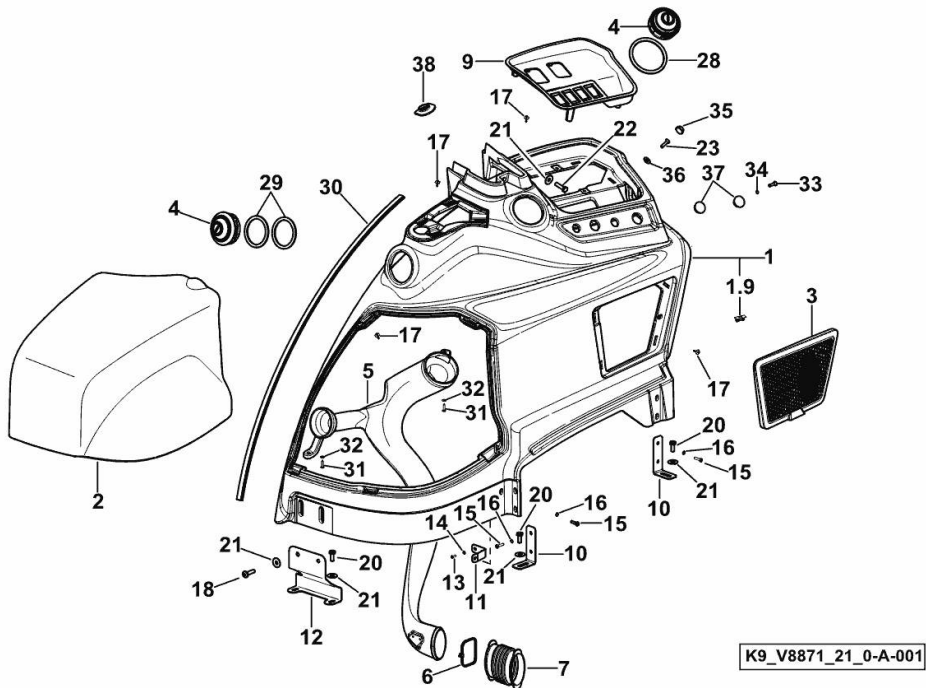
CONTROL CONSOLE DX/RH/RE

Fig.	P/n	QTY	Name
------	-----	-----	------

Notes:

[AUDAX 220] 50021 <-

1	0.020.2722.2/10	1	console dx/rh/re
1.9	0.019.2659.0	18	clip
2	0.020.2719.2/10	1	cover
3	0.020.2720.2	1	grille dx/rh/re (50006 <-)
3	0.020.2720.2/10	1	grille dx/rh/re (-> 50007)
4	0.020.2718.4	2	vent
5	0.019.4907.0/40	1	tube dx/rh/re
6	2.6852.203.0	1	clamp 292 x 4.8
7	0.011.5581.0	1	boot
9	0.020.2721.2	1	front grille dx/rh/re
10	0.019.4880.3	2	bracket
11	0.019.4881.3	1	bracket dx/rh/re
12	0.019.4882.3	1	bracket dx/rh/re
13	2.0361.407.2	4	screw 4 x 12
14	2.1310.028.3	4	washer 4
15	2.0330.307.2	5	screw m 5 x 20
16	2.1310.001.3	5	washer 5.3 x 10
17	0.019.4980.0	18	pin
18	2.0330.509.2	2	screw m 8 x 30
20	01171763	4	screw m 8 p.1.25 x 20
21	2.1312.004.3	7	washer 8,4x24x2
22	01129113	1	screw m 8 x 30
23	2.0342.207.6	1	screw m 6 p.1 x 25
28	0.019.4930.0/20	1	gasket
29	0.019.4791.0	2	gasket
30	04418723	1	profile
31	2.0350.456.3	2	screw
32	2.1599.559.2	2	spacer
33	01119630	4	screw m 4 x 16
34	2.1310.028.3	6	washer 4
35	0.020.2685.0	1	cap
36	0.020.2686.0	1	washer
37	0.020.8015.0	2	plug
37	04426916	2	cap
38	0.011.6003.0	1	gasket



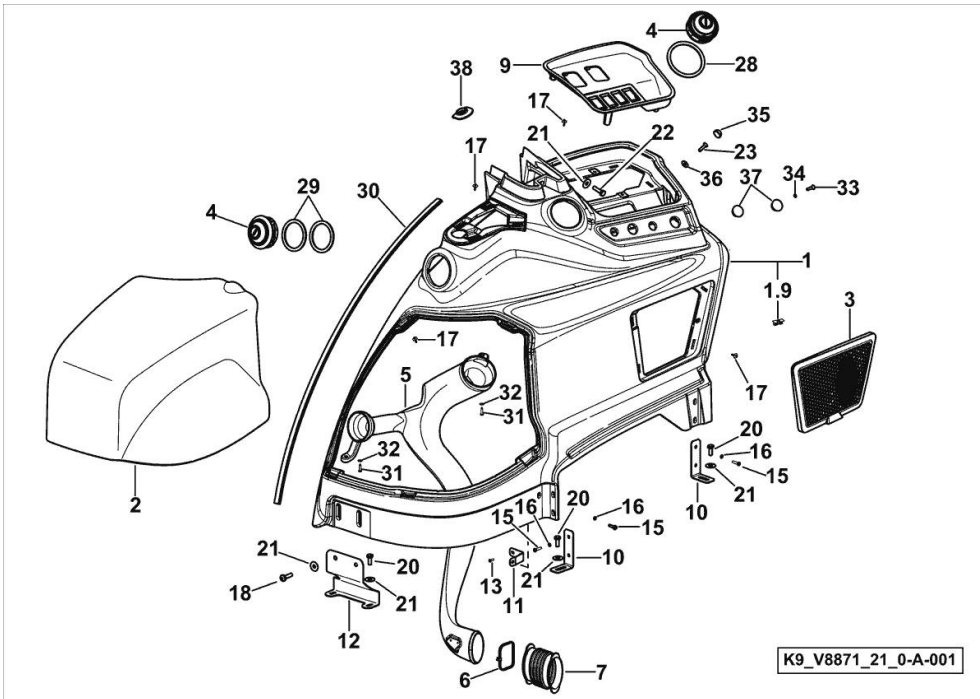
CONTROL CONSOLE DX/RH/RE

Fig.	P/n	QTY	Name
------	-----	-----	------

Notes:

[AUDAX 220] -> 50022

1	0.020.2722.2/10	1	console dx/rh/re
1.9	0.019.2659.0	18	clip
2	0.020.2719.2/20	1	cover
3	0.020.2720.2/30	1	grille dx/rh/re
4	0.020.2718.4	2	vent
5	0.019.4907.0/40	1	tube dx/rh/re
6	2.6852.203.0	1	clamp 292 x 4.8
7	0.011.5581.0	1	boot
9	0.020.2721.2	1	front grille dx/rh/re
10	0.019.4880.3	2	bracket
11	0.019.4881.3	1	bracket dx/rh/re
12	0.019.4882.3	1	bracket dx/rh/re
13	2.0361.407.2	4	screw 4 x 12
15	2.0330.307.2	5	screw m 5 x 20
16	2.1310.001.3	5	washer 5.3 x 10
17	0.019.4980.0	18	pin
18	2.0330.509.2	2	screw m 8 x 30
20	01171763	4	screw m 8 p.1.25 x 20
21	2.1312.004.3	7	washer 8,4x24x2
22	01129113	1	screw m 8 x 30
23	2.0342.207.6	1	screw m 6 p.1 x 25
28	0.019.4930.0/20	1	gasket
29	0.019.4791.0	2	gasket
30	04418723	1	profile
31	2.0350.456.3	2	screw
32	2.1599.559.2	2	spacer
33	01119630	4	screw m 4 x 16
34	2.1310.028.3	6	washer 4
35	0.020.2685.0	1	cap
36	0.020.2686.0	1	washer
37	0.020.8015.0	2	plug
38	0.011.6003.0	1	gasket



RIGHT-HAND CONSOLE PARTS KIT DX/RH/RE

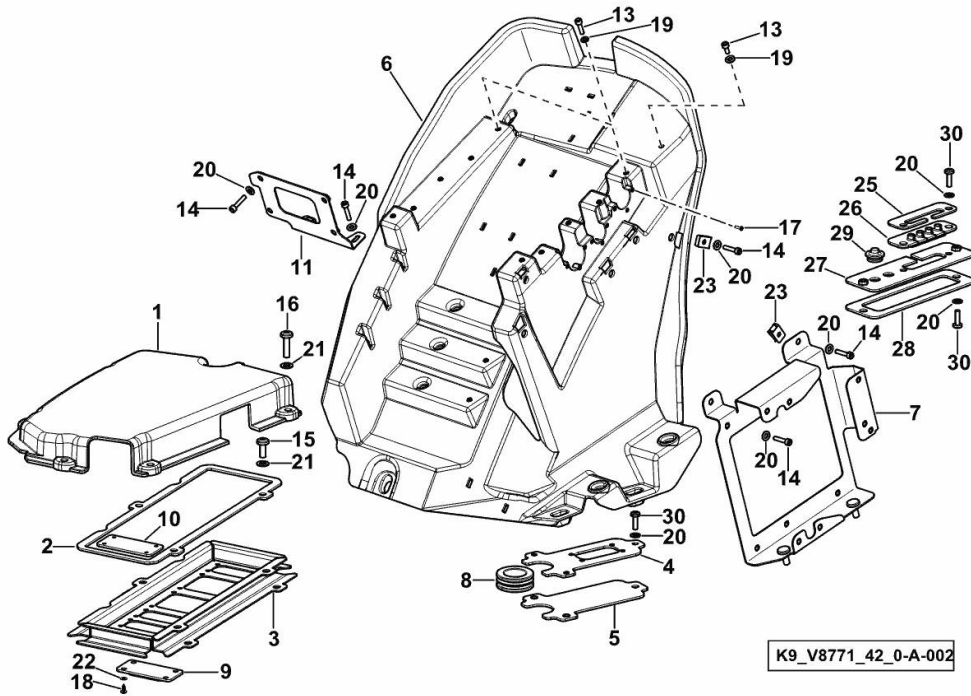


Fig.	P/n	QTY	Name
Notes:			
[AUDAX 220] 50002 <-			
1	0.019.1781.0/20	1	cover
2	0.019.1783.0	1	gasket
3	0.019.1784.0/10	1	container
4	0.019.1785.0	1	plate
5	0.019.1786.0	1	gasket
6	0.019.1787.2/10	1	container
7	0.019.1800.3/20	1	bracket
8	0.019.1801.0	1	gasket
9	0.019.4798.0	2	rubber plug
10	0.019.4803.0	2	cover
11	0.019.4807.2	1	support
13	2.0312.006.2	10	screw m 5 p.0.8 x 20
14	2.0312.108.2	16	screw m 6 p.1 x 25
15	2.0330.507.2	3	screw m 8 p.1.25 x 20
16	2.0330.509.2	5	screw m 8 x 30
17	2.0332.103.2	9	screw m 3x10
18	01127683	8	screw m 4.2x13
19	2.1310.001.2	10	flat washer 5.3 x 10
20	2.1310.002.2	23	flat washer 6.4x12.5
21	2.1310.004.2	8	flat washer 8.4x17
22	2.1310.028.2	8	flat washer
23	2.6999.064.6	5	special nut m 6
25	04429437	1	plate
26	04429293	1	gasket
27	0.019.5666.3	1	bracket
28	0.019.5749.0	1	gasket
29	04424188	2	grommet 16
30	2.0330.407.2	7	screw m 6 p.1 x 20

RIGHT-HAND CONSOLE PARTS KIT DX/RH/RE

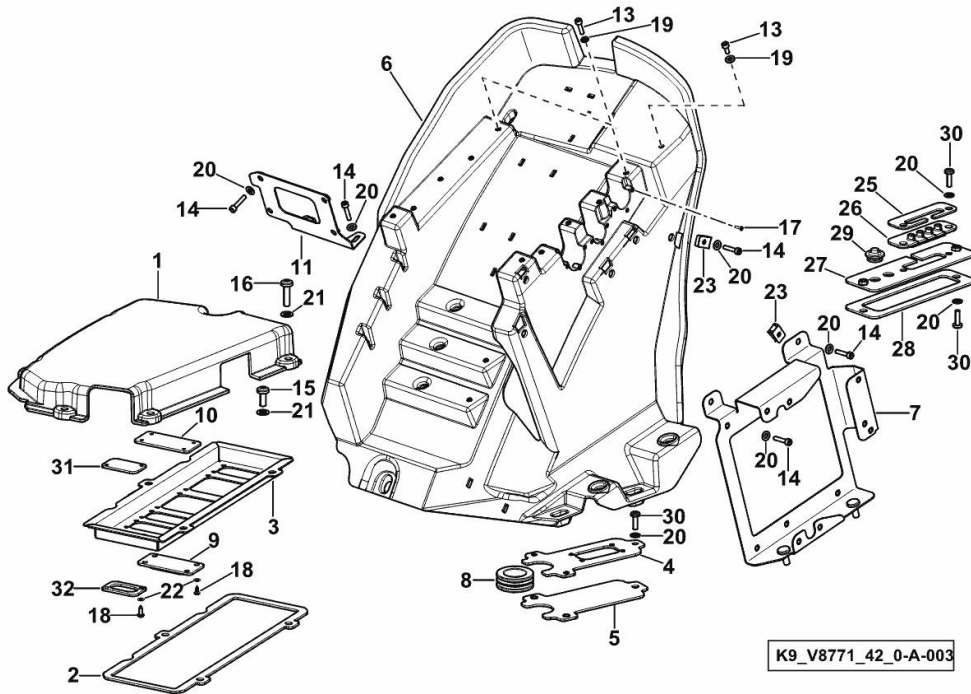


Fig.	P/n	QTY	Name
Notes:			
[AUDAX 220]			
1	0.019.1781.0/20	1	cover
2	0.019.1783.0	1	gasket
3	0.019.1784.0/20	1	container
4	0.019.1785.0	1	plate
5	0.019.1786.0	1	gasket
6	0.019.1787.2/10	1	container
7	0.019.1800.3/20	1	bracket
8	0.019.1801.0	1	gasket
9	0.019.4798.0	2	rubber plug
10	0.019.4803.0	2	cover
11	0.019.4807.2	1	support
13	2.0312.006.2	10	screw m 5 p.0.8 x 20
14	2.0312.108.2	16	screw m 6 p.1 x 25
15	2.0330.507.2	3	screw m 8 p.1.25 x 20
16	2.0330.509.2	5	screw m 8 x 30
17	2.0332.103.2	9	screw m 3x10
18	01127683	10	screw m 4.2x13
19	2.1310.001.2	10	flat washer 5.3 x 10
20	2.1310.002.2	23	flat washer 6.4x12.5
21	2.1310.004.2	8	flat washer 8.4x17
22	2.1310.028.2	10	flat washer
23	2.6999.064.6	5	special nut m 6
25	04429437	1	plate
26	04429293	1	gasket
27	0.019.5666.3	1	bracket
28	0.019.5749.0	1	gasket
29	04424188	2	grommet 16
30	2.0330.407.2	7	screw m 6 p.1 x 20
31	0.021.2075.0	1	plug
32	0.021.2076.0	1	gasket

RIGHT-HAND CONSOLE PARTS KIT DX/RH/RE

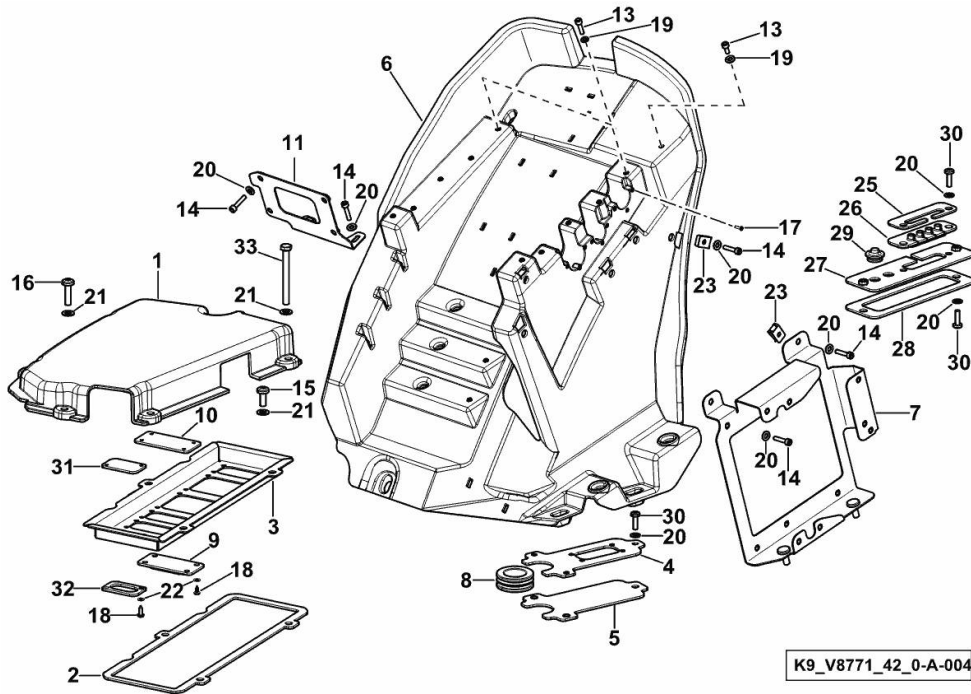


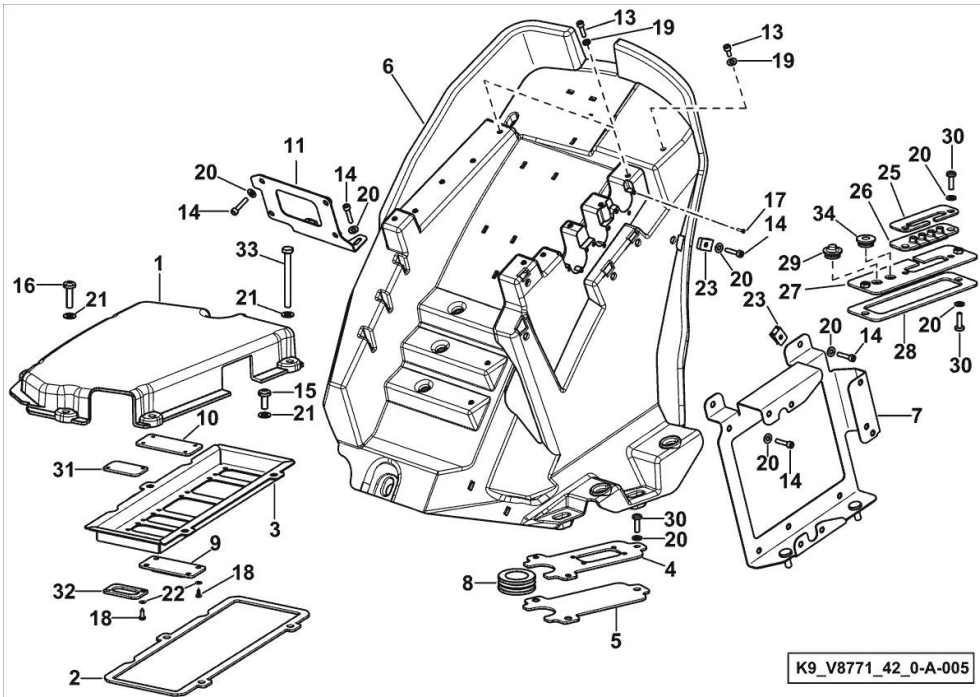
Fig.	P/n	QTY	Name
Notes:			
[AUDAX 220] -> 50003 - 50022 <-			
1	0.019.1781.0/20	1	cover
2	0.019.1783.0	1	gasket
3	0.019.1784.0/20	1	container
4	0.019.1785.0	1	plate
5	0.019.1786.0	1	gasket
6	0.019.1787.2/10	1	container
7	0.019.1800.3/30	1	bracket
8	0.019.1801.0	1	gasket
9	0.019.4798.0	2	rubber plug
10	0.019.4803.0	2	cover
11	0.019.4807.2	1	support
13	2.0312.006.2	10	screw m 5 p.0.8 x 20
14	2.0312.108.2	16	screw m 6 p.1 x 25
15	2.0330.507.2	3	screw m 8 p.1.25 x 20
16	2.0330.509.2	4	screw m 8 x 30
17	2.0332.103.2	9	screw m 3x10
18	01127683	10	screw m 4.2x13
19	2.1310.001.2	10	flat washer 5.3 x 10
20	2.1310.002.2	23	flat washer 6.4x12.5
21	2.1310.004.2	8	flat washer 8.4x17
22	2.1310.028.2	10	flat washer
23	2.6999.064.6	5	special nut m 6
25	04429437	1	plate
26	04429293	1	gasket
27	0.019.5666.3	1	bracket
28	0.019.5749.0	1	gasket
29	04424188	2	grommet 16
30	2.0330.407.2	7	screw m 6 p.1 x 20
31	0.021.2075.0	1	plug
32	0.021.2076.0	1	gasket
33	2.0114.223.2	1	screw

RIGHT-HAND CONSOLE PARTS KIT DX/RH/RE

Fig.	P/n	QTY	Name
------	-----	-----	------

Notes:

[AUDAX 220] -> 50023



1	0.019.1781.0/20	1	cover
2	0.019.1783.0	1	gasket
3	0.019.1784.0/20	1	container
4	0.019.1785.0	1	plate
5	0.019.1786.0	1	gasket
6	0.019.1787.2/10	1	container
7	0.019.1800.3/30	1	bracket
8	0.019.1801.0	1	gasket
9	0.019.4798.0	2	rubber plug
10	0.019.4803.0	2	cover
11	0.019.4807.2	1	support
13	2.0312.006.2	10	screw m 5 p.0.8 x 20
14	2.0312.108.2	16	screw m 6 p.1 x 25
15	2.0330.507.2	3	screw m 8 p.1.25 x 20
16	2.0330.509.2	4	screw m 8 x 30
17	2.0332.103.2	9	screw m 3x10
18	01127683	10	screw m 4.2x13
19	2.1310.001.2	10	flat washer 5.3 x 10
20	2.1310.002.2	23	flat washer 6.4x12.5
21	2.1310.004.2	8	flat washer 8.4x17
22	2.1310.028.2	10	flat washer
23	2.6999.064.6	5	special nut m 6
25	04429437	1	plate
26	04429293	1	gasket
27	0.019.5666.3	1	bracket
28	0.019.5749.0	1	gasket
29	04424188	1	grommet 16
30	2.0330.407.2	7	screw m 6 p.1 x 20
31	0.021.2075.0	1	plug
32	0.021.2076.0	1	gasket
33	2.0114.223.2	1	screw
34	0.020.4654.0	1	plug

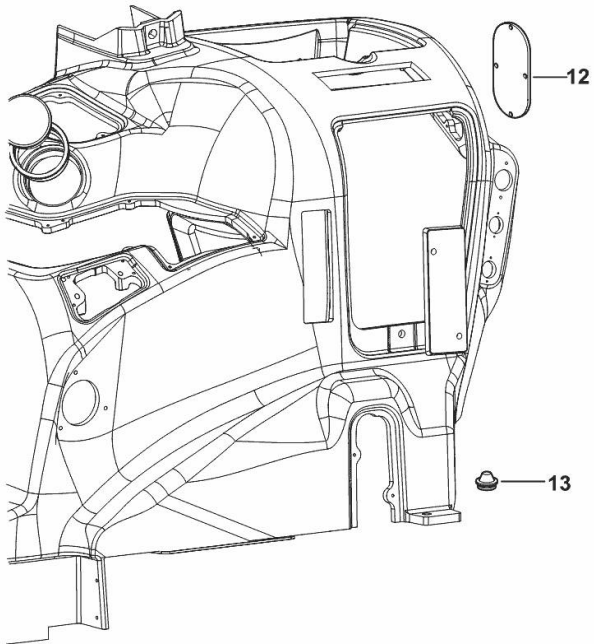
CONTROL CONSOLE - DX/RH/RE

Fig.	P/n	QTY	Name
------	-----	-----	------

Notes:

[AUDAX 220]

12	04429609	1	cover
13	04424188	1	grommet 16



K9_95071_24_0-A-001

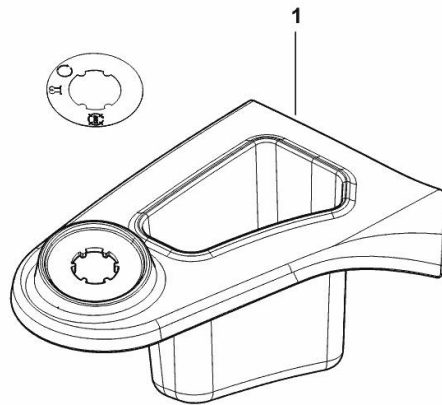
CONTROL CONSOLE RIGHT - TRIM

Fig.	P/n	QTY	Name
------	-----	-----	------

Notes:

- FOR TYPES WITHOUT I-MONITOR [AUDAX 220]

1	0.020.2766.2	1	front grille
---	--------------	---	--------------



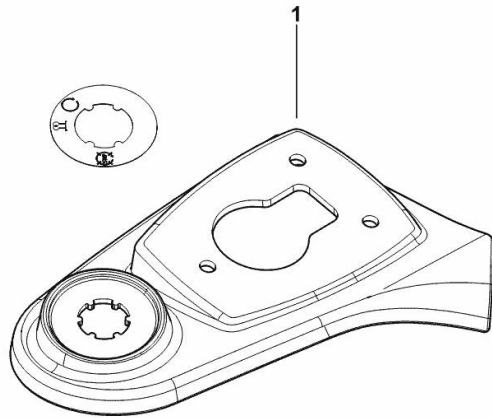
K9_V8871_53_0-A-001

CONTROL CONSOLE RIGHT - TRIM - DX/RH/RE

Fig.	P/n	QTY	Name
------	-----	-----	------

Notes:
 - FOR TYPES W/ I-MONITOR [AUDAX 220]

1	0.020.2763.2	1	console
---	--------------	---	---------



K9_V8871_52_0-A-001

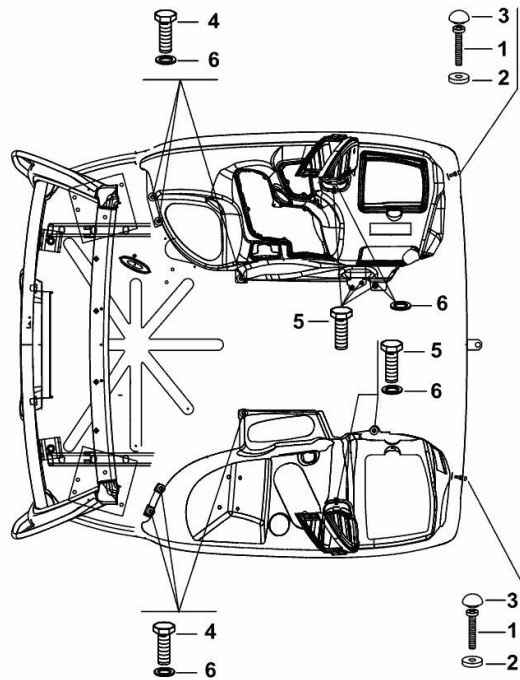
FIXINGS FOR CAB INTERIOR TRIM

Fig.	P/n	QTY	Name
------	-----	-----	------

Notes:

[AUDAX 220]

1	2.0342.207.6	2	screw m 6 p.1 x 25
2	2.1312.003.2	4	washer 6
3	04419538	2	cap
4	01171763	6	screw m 8 p.1.25 x 20
5	01129113	6	screw m 8 x 30
6	2.1312.004.2	10	washer 8x24x2



K9_J3371_69_0-A-001

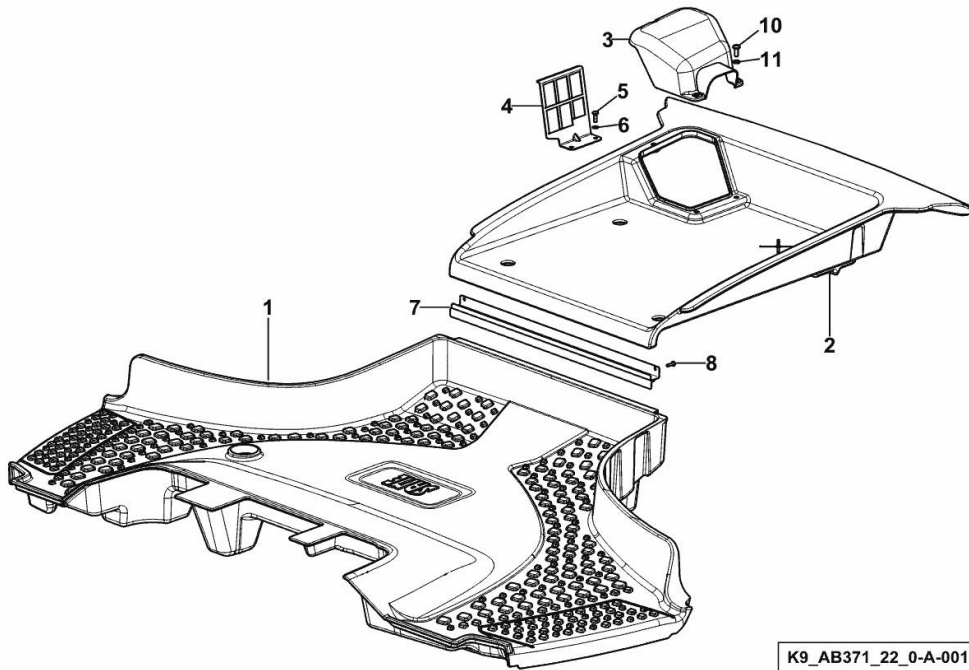
CARPETS

Fig.	P/n	QTY	Name
------	-----	-----	------

Notes:

[AUDAX 220]

1	0.020.2916.2	1	mat
2	0.020.6776.2	1	mat
3	0.020.2919.0	1	cover
4	0.019.6656.0	1	bracket
5	2.0330.306.2	5	screw m 5 x 16
6	2.1310.001.2	5	flat washer 5.3 x 10
7	0.019.6726.2/20	1	sealing section
8	04426906	2	screw 4.2x16
10	2.0330.406.2	3	screw m 6 p.1.0 x 16
11	2.1310.002.2	3	flat washer 6.4x12.5



K9_AB371_22_0-A-001

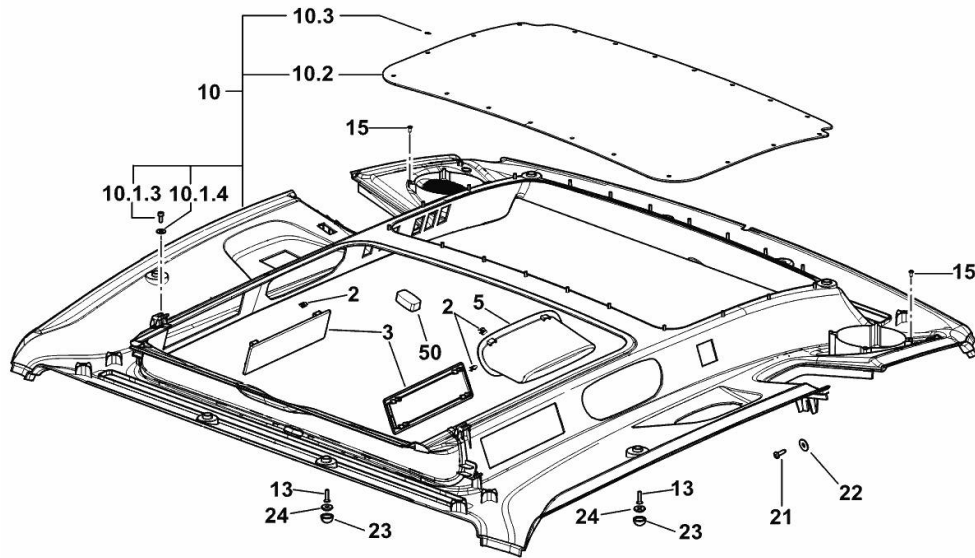
CAB ROOF LINING

Fig.	P/n	QTY	Name
------	-----	-----	------

Notes:

[AUDAX 220]

2	0.013.4283.0	12	clip
3	0.013.7536.0/10	2	plug
5	0.020.2939.0	1	container
10	0.020.2940.4	1	inner cab roof panel
10.1.3	2.0312.002.2	4	screw m 5 p.0.8 x 12
10.1.4	2.1312.002.2	4	washer 5
10.2	0.019.2429.0	1	inner cab roof panel
10.3	2.6999.071.0	20	clip D4x10.5
13	04416919	8	screw m 4.8x32
15	2.0350.404.3	8	screw
21	2.0350.505.3	2	screw 4.8x16
22	2.1312.003.2	2	washer 6
23	0.020.2685.0	8	cap
24	0.020.2686.0	8	washer
50	0.019.9017.0	1	plug



K9_V8871_27_0-A-001

PLUG - DX/RH/RE

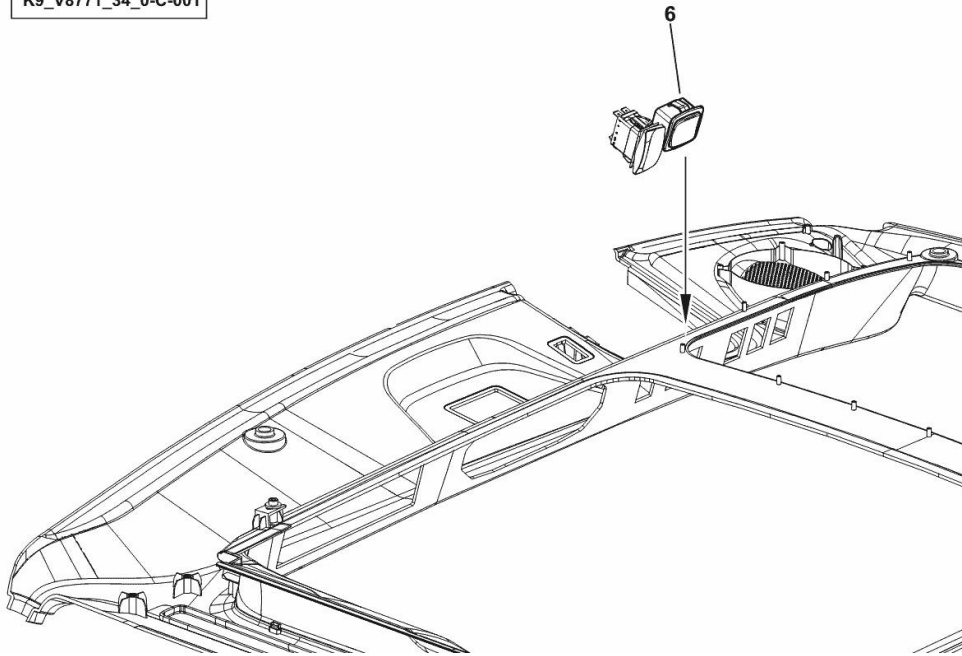
Fig.	P/n	QTY	Name
------	-----	-----	------

Notes:

[AUDAX 220] 50001 <-

6	0.016.7902.0	1	plug
---	--------------	---	------

K9_V8771_34_0-C-001



Thank you so much for reading.
Please click the “Buy Now!”
button below to download the
complete manual.



After you pay.

You can download the most
perfect and complete manual in
the world immediately.

Our support email:

ebooklibonline@outlook.com