

Section: B0 - ENGINE

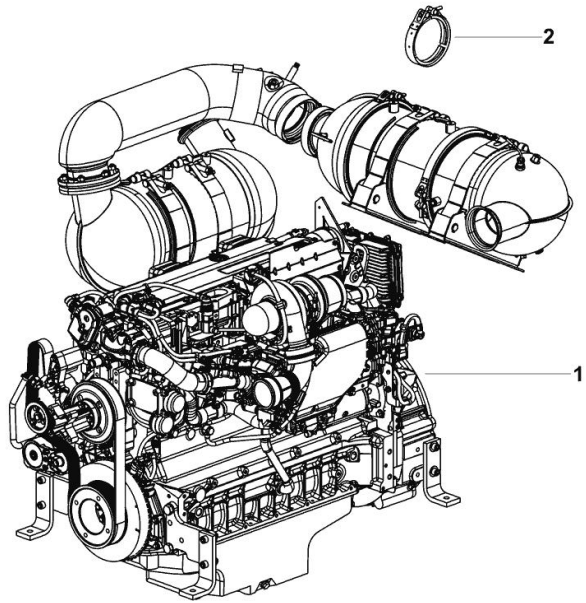
ENGINE TCD6.1 T4F 180Kw ECO

Fig.	P/n	QTY	Name
------	-----	-----	------

Notes:

[C 6205 TS]

1	25011689	1	engine TCD6.1 T4F 180Kw ECO ON ORDERING PLEASE ENGINE NO. REQUIRED
2	04603586	2	clamp



H9_QD7A0_00_0-A-001

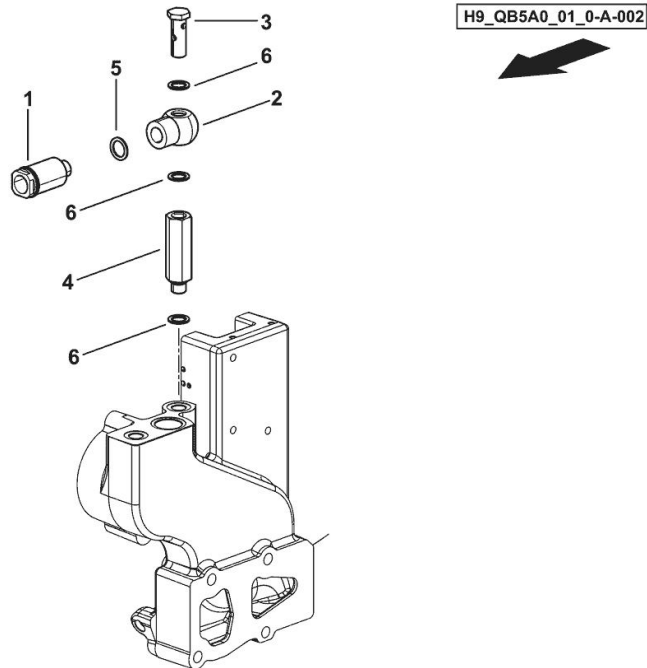
PARTS SET - ENGINE MOUNTING

Fig.	P/n	QTY	Name
------	-----	-----	------

Notes:

[C 6205 TS]

1	16064285	1	connection
2	2.3249.694.2	1	pipe fitting
3	2.3249.799.2	1	pipe union m14x1.5
4	2.3249.800.2	1	pipe union m14x1.5
5	2.1560.012.0	1	gasket 16.2 x 22
6	2.1560.010.0	3	gasket 14.2 x 20



PARTS SET - ENGINE MOUNTING

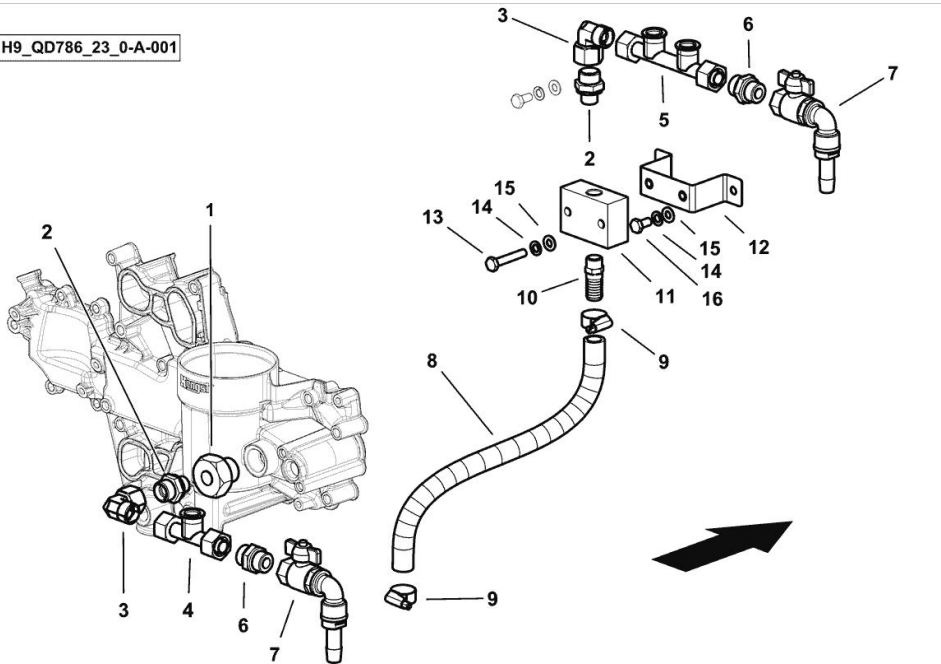
Fig.	P/n	QTY	Name
------	-----	-----	------

Notes:

[C 6205 TS]

1	16061890	1	vent
2	16064263	2	pipe fitting m 22 p.1.5 / 3.8"
3	2.3249.269.2	2	pipe fitting Ø 15 (L)
4	0.019.9138.3	1	tube
5	0.021.8561.3	1	pipe fitting
6	16064262	2	pipe fitting m 22 p.1.5 / 1.2"
7	0.019.4734.4	2	valve
8	0.019.6568.0	0.37	flexible hose
9	2.6851.001.0	2	clamp Ø 16/25
10	2.3248.110.2	1	pipe fitting
11	0.021.8618.0	1	small block
12	0.021.8602.3	1	bracket
13	2.0114.216.2	2	screw m 8 x 45
14	2.1474.009.2	4	spring washer 8
15	2.1310.004.2	4	flat washer 8.4x17
16	2.0114.205.2	2	screw m 8 p.1.25 x 16

H9_QD786_23_0-A-001



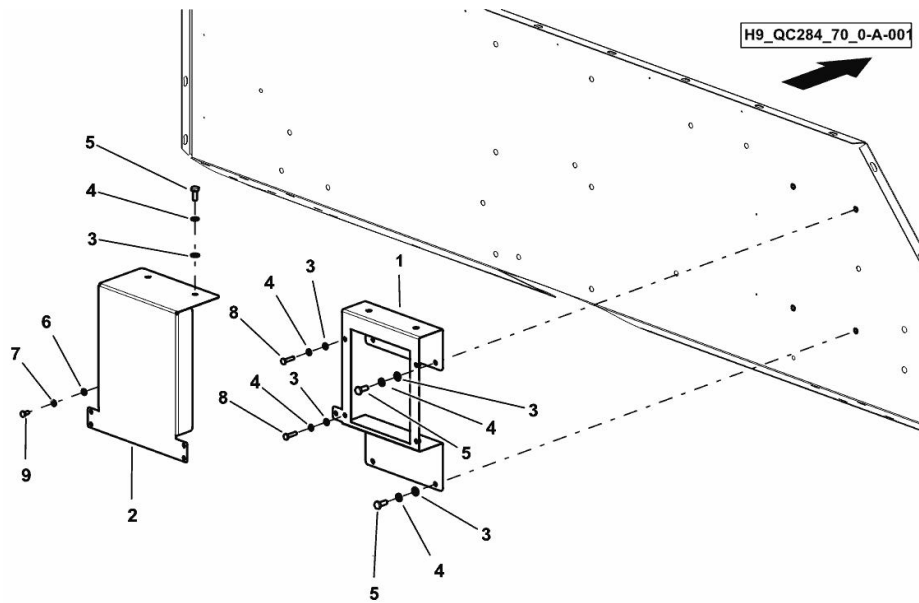
Section: B0 - ENGINE

ENGINE CONTROL UNIT COVER

Fig.	P/n	QTY	Name
------	-----	-----	------

Notes:

[C 6205 TS]



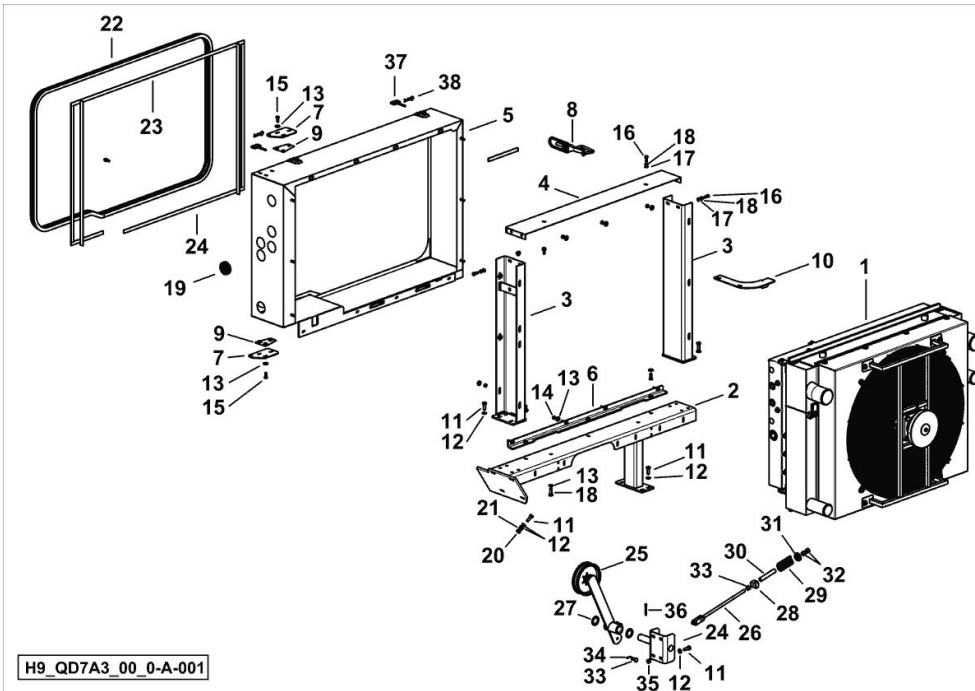
1	0.019.5182.3	1	support
2	0.019.9306.0	1	guard
3	2.1310.004.2	6	flat washer 8.4x17
4	2.1474.009.2	6	spring washer 8
5	2.0114.207.2	6	screw m 8 p.1.25 x 20
6	2.1310.002.2	5	flat washer 6.4x12.5
7	2.1474.007.2	5	washer 6, d128
8	2.0112.009.2	4	screw m 6 p.1 x 25
9	2.0114.003.2	1	screw m 6 p.1 x 12

COOLING SYSTEM

Fig.	P/n	QTY	Name
------	-----	-----	------

Notes:

[C 6205 TS]



1	0.021.7896.4/10	1	cooler kpl. (18025 <-)
1	0.021.7896.4/20	1	cooler kpl. (-> 18016) ☞ 0.021.7896.4/20
2	0.017.5156.3/10	1	crosspiece
3	0.021.7900.3	2	support
4	0.021.7905.3	1	plate
5	0.022.1480.3/10	1	support
6	0.021.8025.3	1	plate
7	16049941	2	plate
8	06259239	1	interlock
9	0.019.7527.3	2	plate
10	0.021.7956.0	1	plate
11	2.0114.311.2	22	screw m 10 p.1.25 x 30
12	2.1310.006.2	26	flat washer 10.5x21
13	06214192	23	washer 8.4
14	01104944	14	nut m 8, d985
15	01112326	6	screw m 8 x 22
16	2.0114.209.2	9	screw m 8 x 25
17	2.1310.004.2	6	flat washer 8.4x17
18	2.1474.009.2	6	spring washer 8
19	06273149	7	rubber bushing
20	06209768	4	nut m 10, d985
21	2.1474.010.2	4	washer 10
22	01396986	3.7	copper gasket 4300 mm
23	01393156	5.34	gasket
24	0.017.5829.3	1	support
25	0.017.5833.4/10	1	support
26	06501950/10	1	connecting rod
27	06214234	2	disc 31 x 45 x 2
28	06519261/10	1	disc
29	06215418/10	1	spring 6,0 x 35,0 x 82
30	06511966/10	1	tube
31	06515117	1	disc
32	01112858	5	nut m 12, d934
33	2.1671.407.2	1	pin 10 x 28
34	2.1690.306.2	1	split pin 3.2 x 16
35	2.1011.106.2	4	nut m 10 p.1.5
36	2.1690.515.2	1	split pin
37	06253194	2	hook
38	06264206	2	roll pin

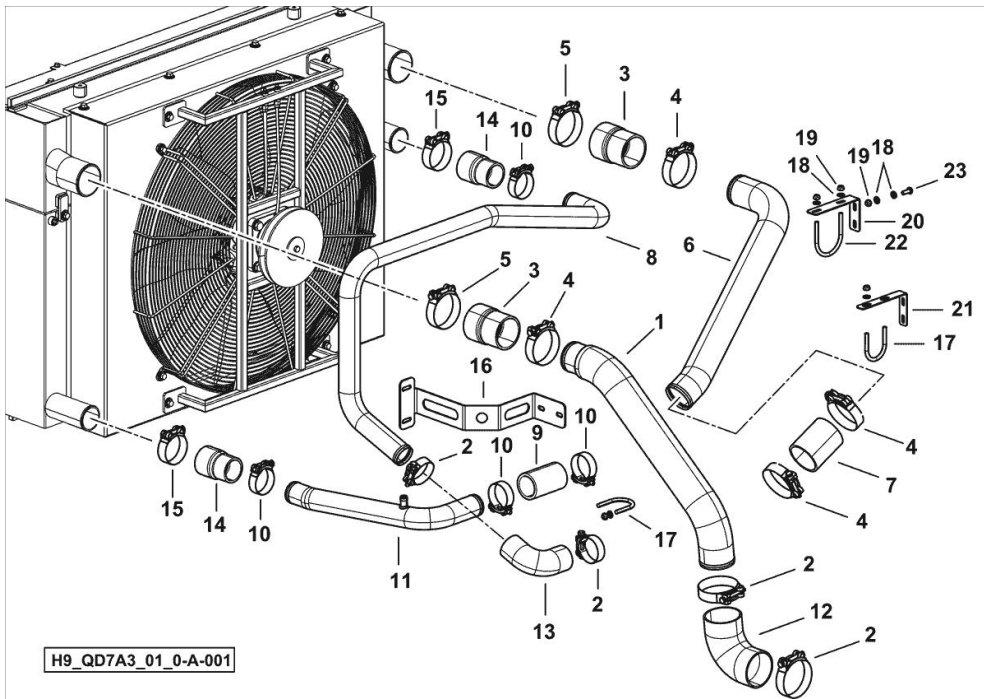
ENGINE COOLING SYSTEM PIPES

Fig.	P/n	QTY	Name
------	-----	-----	------

Notes:

[C 6205 TS]

1	0.021.5269.0	1	tube
2	2.6859.110.0	2	clamp
3	0.022.2381.0	2	sleeve
4	2.6859.148.2	4	clamp Ø 79-85
5	2.6859.111.0	2	clamp Ø 80-85
6	0.021.5285.0	1	tube
7	0.021.5281.0/10	1	sleeve
8	0.021.5292.0	1	tube
9	0.018.1884.0	1	sleeve Ø 50/63
10	2.6859.155.0	6	clamp Ø 59/63
11	0.021.5316.0	1	tube
12	16049954	1	rubber tube Ø 80
13	16054482	1	rubber tube Ø 50
14	0.021.7848.0	2	sleeve
15	2.6859.147.0	2	clamp 65/70
16	0.022.0986.0	1	bracket
17	0.017.7182.0	2	u bolt m 8
18	2.1310.004.2	14	flat washer 8.4x17
19	2.1121.005.2	10	nut m 8 p.1.25
20	0.022.1545.0	1	support
21	0.022.1445.0	1	support
22	16049946/10	1	u bolt m 8
23	2.0112.207.2	4	screw m 8 p 1.25 x 20



H9_QD7A3_01_0-A-001

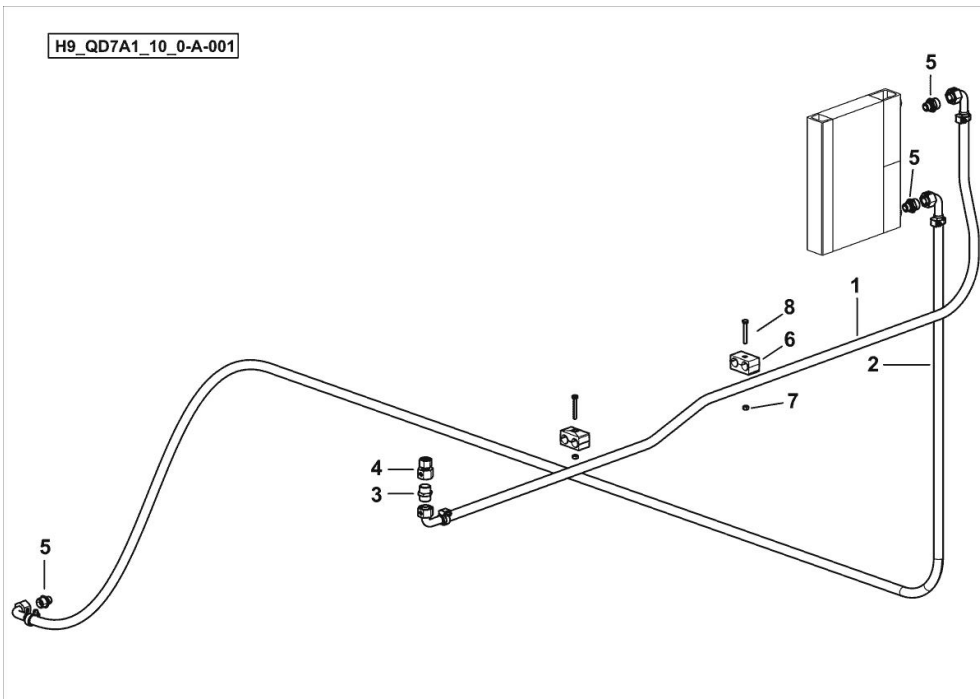
FUEL COOLER PIPES

Fig.	P/n	QTY	Name
------	-----	-----	------

Notes:

[C 6205 TS]

1	0.022.1440.3	1	tube
2	0.022.1441.3	1	tube
3	01116711	1	vent L 15
4	16056918	1	reduction
5	16048122	3	pipe fitting GE 15 PL
6	06272953	2	terminal Ø 18
7	01114357	2	nut m 6, d985
8	2.0114.016.2	2	screw m 16 p.1x45

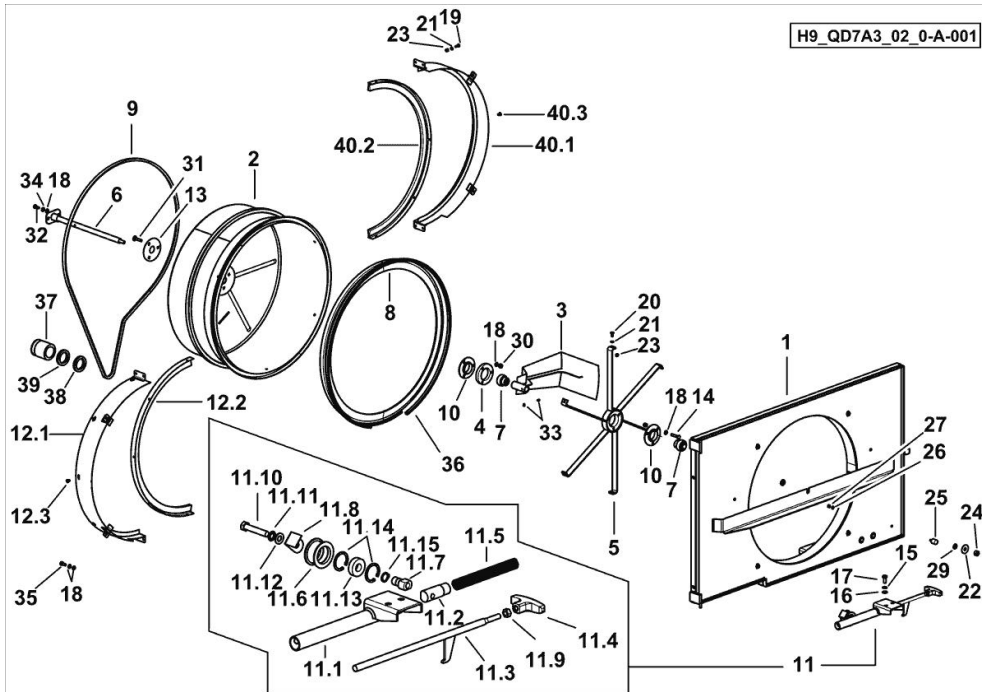


ROTARY FILTER BASKET

Fig.	P/n	QTY	Name
------	-----	-----	------

Notes:

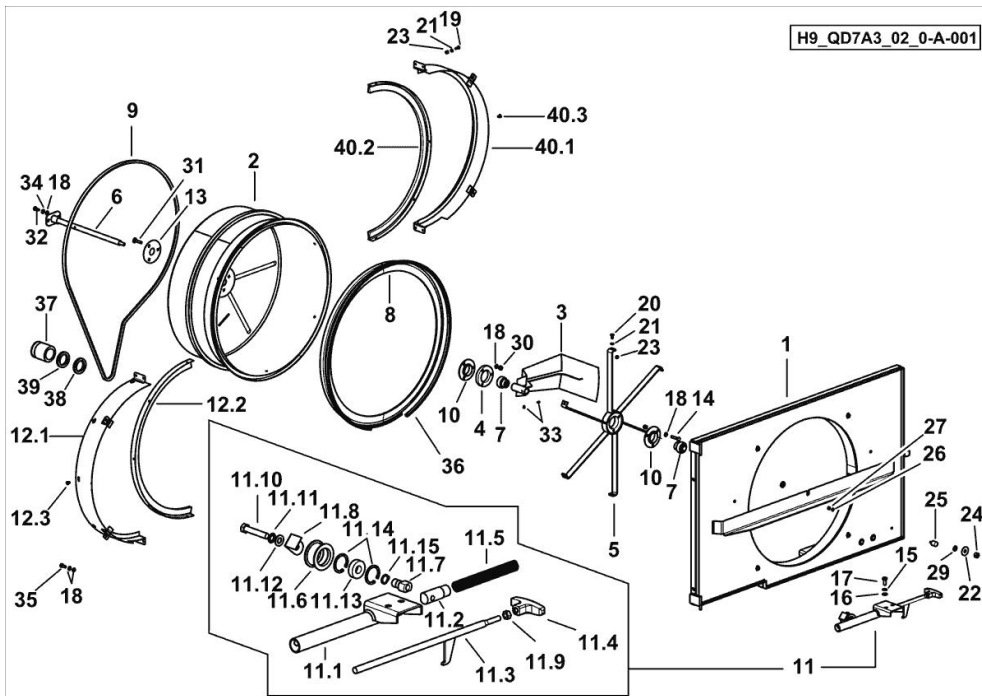
[C 6205 TS]



1	0.022.1505.3	1	cover
2	0.021.8961.3/10	1	filtering basket
3	0.021.8996.3	1	plate
4	16035507/10	1	disc Ø 54 / Ø 90 X 13
5	0.021.8992.3	1	wheel
6	0.018.7019.3/20	1	pin
7	06215739	2	bearing yb 20
8	0.019.1081.0	2.3	brush
9	2.4119.224.0	1	belt 13x2528 Li ROTARY FILTER BASKET CONTROL
10	06215781	2	bearing housing rb 20
11	0.020.7304.4	1	pulley
11.1	0.019.7188.3	1	tappet casing
11.2	0.020.7337.0	1	slider
11.3	0.020.2576.3	1	rod
11.4	0.020.3265.0	1	wing nut
11.5	06215299	1	spring
11.6	16050788	1	tensioner
11.7	0.020.6604.0	1	bush
11.8	16050785/10	1	angular
11.9	2.1012.106.2	1	nut
11.10	2.0112.422.2	1	screw m 12 p.1.75 x 65
11.11	2.1474.011.2	1	spring washer 12
11.12	2.1310.007.2	1	flat washer 13 x 24
11.13	01128197	1	bearing 2 RS
11.14	2.1411.016.7	2	circlip 40 x 1.75
11.15	2.1410.056.7	1	ring
12.1	0.021.8984.3	1	support
12.2	0.021.8978.4	1	guard
12.3	2.1899.094.0	5	rivet
13	0.018.6105.0	1	plate
14	2.0112.215.2	3	screw m 8 p.1.25 x 40
15	2.1474.010.2	2	washer 10
16	2.1310.006.2	2	flat washer 10.5x21
17	2.0114.309.2	2	screw m 10 p 1.25 x 25
18	2.1310.004.2	16	flat washer 8.4x17
19	2.0114.005.2	4	screw m 6 p.1.0 x 16
20	06214132	6	screw m 6 x 15, d921
21	2.1310.002.2	10	flat washer 6.4x12.5
22	2.1312.006.2	1	washer 14.5
23	2.1120.003.2	10	self-locking nut m 6

ROTARY FILTER BASKET

Fig.	P/n	QTY	Name
24	2.1011.107.2	1	nut m 12 p.1.75
25	06253864	1	silent-block
26	2.1474.007.2	1	washer 6, d128
27	2.1011.103.2	1	nut m 6 p.1
29	2.1310.007.2	1	flat washer 13 x 24
30	2.1120.005.2	6	nut m 8 p.1.25
31	2.0020.209.2	3	screw
32	2.0112.207.2	2	screw m 8 p 1.25 x 20
33	2.0532.103.7	2	grub screw
34	2.1474.009.2	2	spring washer 8
35	2.0114.207.2	4	screw m 8 p.1.25 x 20
36	01388766	2.15	gasket (mt. ...)
37	0.019.3568.0	1	pulley
38	0.019.3575.0	2	spacer
39	0.019.3599.0	2	spacer
40.1	0.021.8977.3	1	support
40.2	0.021.8978.4	1	guard
40.3	2.1899.094.0	5	rivet

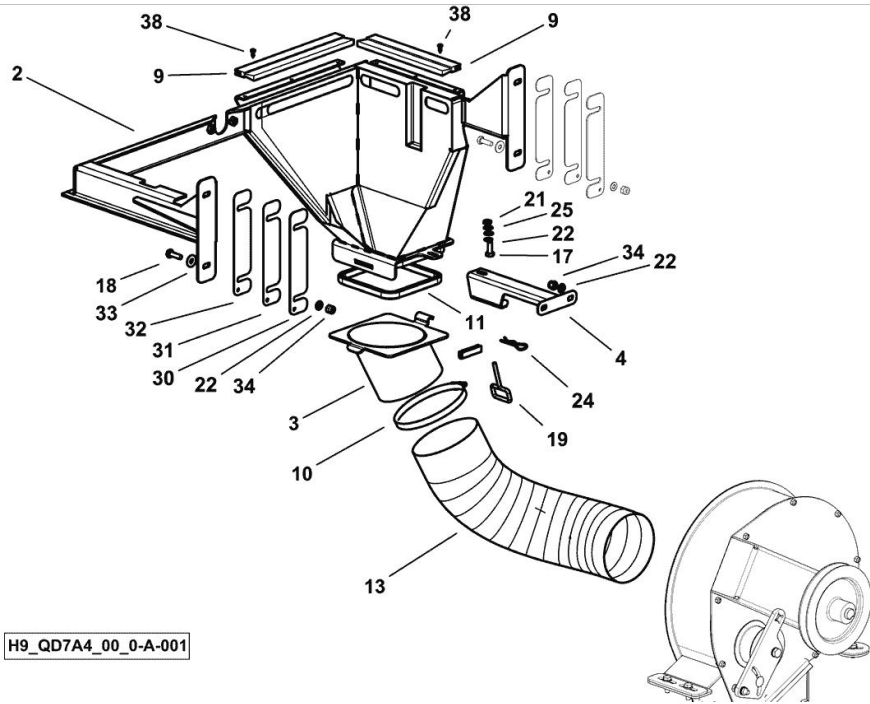


ENGINE AIR SUCTION FAN

Fig.	P/n	QTY	Name
------	-----	-----	------

Notes:
[C 6205 TS]

2	0.021.9045.3	1	bracket
3	0.021.9765.3	1	manifold
4	0.021.9125.3	1	bracket
9	0.019.2105.0	0.5	brush
10	2.6851.013.0	4	clamp 120-140
11	01388766	0.55	gasket (mt. ...)
13	16055244	1	flexible hose
17	2.0114.207.2	5	screw m 8 p.1.25 x 20
18	2.0114.209.2	6	screw m 8 x 25
19	06253194	1	hook
21	2.1011.205.2	3	nut m 8 p.1.25
22	2.1310.004.2	15	flat washer 8.4x17
24	06264206	1	roll pin
25	2.1474.009.2	3	spring washer 8
30	0.018.7661.0	2	plate
31	0.018.7660.0	2	plate
32	0.018.7659.0	2	plate
33	01174910	4	washer 9
34	2.1120.005.2	6	nut m 8 p.1.25
38	2.0350.454.2	6	screw 4.2x13



H9_QD7A4_00_0-A-001

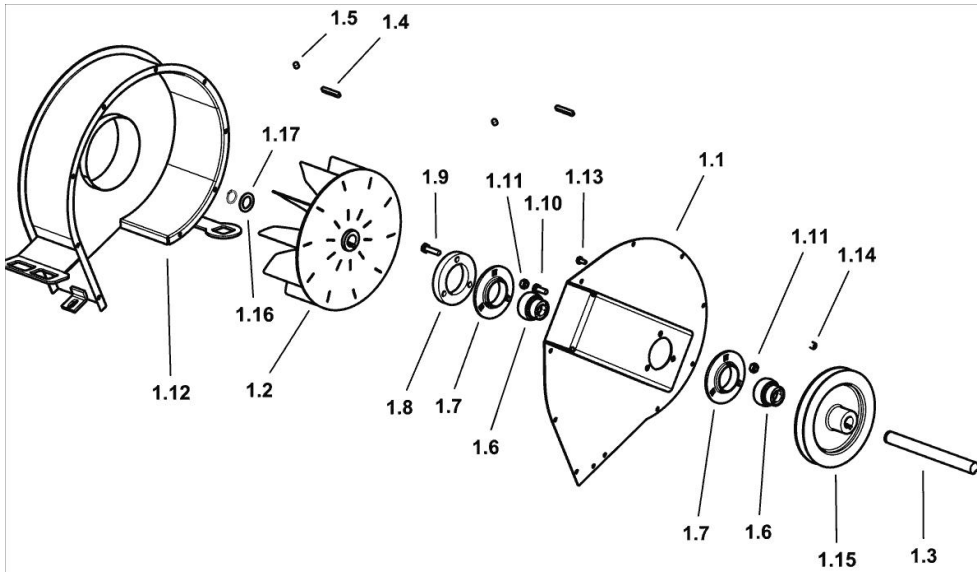
ENGINE AIR SUCTION FAN

Fig.	P/n	QTY	Name
------	-----	-----	------

Notes:

[C 6205 TS]

1.1	0.017.2685.3	1	cover
1.2	16054620	1	fan
1.3	16054645/10	1	shaft
1.4	06212403	2	stick 6x6x40
1.5	06208993	2	grub screw m 8 x 10
1.6	06215739	2	bearing yb 20
1.7	06215781	2	bearing housing rb 20
1.8	16035507/10	1	disc Ø 54 / Ø 90 X 13
1.9	01112341	3	screw m 8 x 30, d933
1.10	01112322	3	screw m 8 p.1.25 x 20
1.11	01104944	6	nut m 8, d985
1.12	0.018.6708.3/10	1	ventilator body
1.13	01112240	9	screw m 6 x 12
1.14	01114357	9	nut m 6, d985
1.15	16054440	1	pulley 1/17x170
1.16	06214229	1	washer 21 x 32 x 2.0
1.17	2.1410.006.2	1	circlip Ø 20



H9_QD7A4_00_0-C-001

Thank you so much for reading.
Please click the “Buy Now!”
button below to download the
complete manual.



After you pay.

You can download the most
perfect and complete manual in
the world immediately.

Our support email:

ebooklibonline@outlook.com