

Section: ENGINE

CRANKCASE

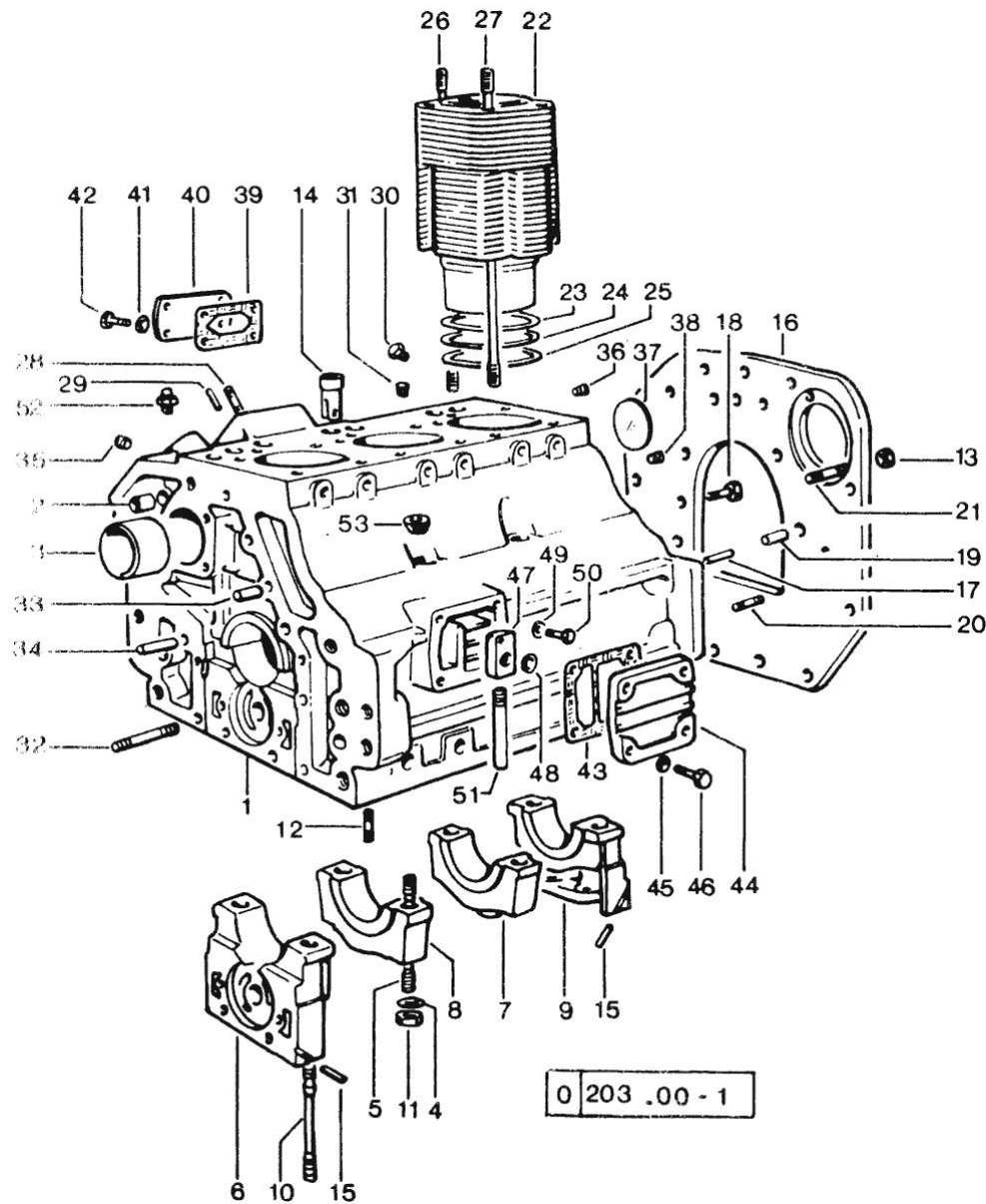


Fig.	P/n	QTY	Name
Notes:			
[CONDOR 55 Syncro 2000 <-]			
0	0.054.0050.6	1	gasket set - FOR ENGINE MOUNTING
1	0.054.1110.4/20	1	crankcase
2	2.1559.111.0	2	bushing 12x14x10
3	0.037.1155.0	1	bushing
4	2.1599.144.7	8	shoulder ring 12.5x23x4
5	0.029.1117.0	4	stud bolt
6	0.054.1112.0	1	support
7	0.037.1114.0	1	support
8	0.029.1113.0	1	support
9	0.029.1116.0	1	support
10	0.021.1157.0	4	stud bolt
11	2.1019.026.7	8	special nut m 12 p.1.5
12	2.0432.003.1	24	stud bolt m 8 p.1.25 / p.1 x 20
13	2.1011.207.2	2	nut m 12 p.1.5
14	0.044.1156.0	6	special bushing
15	0.029.1154.0	4	gasket
16	0.054.1130.0/10	1	flange
17	2.1653.708.0	2	pin 8x18
18	2.0112.511.1	11	screw m 14 p.2 x 30
19	2.1652.911.0	2	cylindrical plug 12x25
20	2.0432.155.1	2	stud bolt m 10 p.1.5 / p. 1.25 x 25
21	2.0432.255.1	2	stud bolt m 12 p.1.75 - 12 p.1.25x25
22	0.045.1120.0/10	3	engine cylinder
23	2.1589.052.0	3	shoulder ring 115x123x0.2
24	2.1589.051.0	3	shoulder ring 116x123x0.1
25	2.1569.076.0	3	gasket 116x123x0.5
26	0.041.1123.0	3	stud bolt m 10
27	0.039.1122.0	12	stud bolt m 12 p.1.5x310
28	2.0432.003.1	4	stud bolt m 8 p.1.25 / p.1 x 20
29	2.1653.306.0	1	pin
30	0.071.1151.3	3	valve
31	2.3130.001.1	2	plug 1/8" gas
32	2.0432.025.1	2	stud bolt m 8 p 1.25-1x100
33	2.1653.711.0	1	pin
34	2.1699.114.0	1	pin 8x55
35	2.3139.001.0	3	plug m 12 p.1.75
36	2.3130.002.1	1	plug 1/4" gas
37	2.3170.022.1	1	expansion plug 60
38	2.3130.003.1	2	plug 3/8" gas
39	0.044.1151.0	1	gasket

Section: ENGINE
CRANKCASE

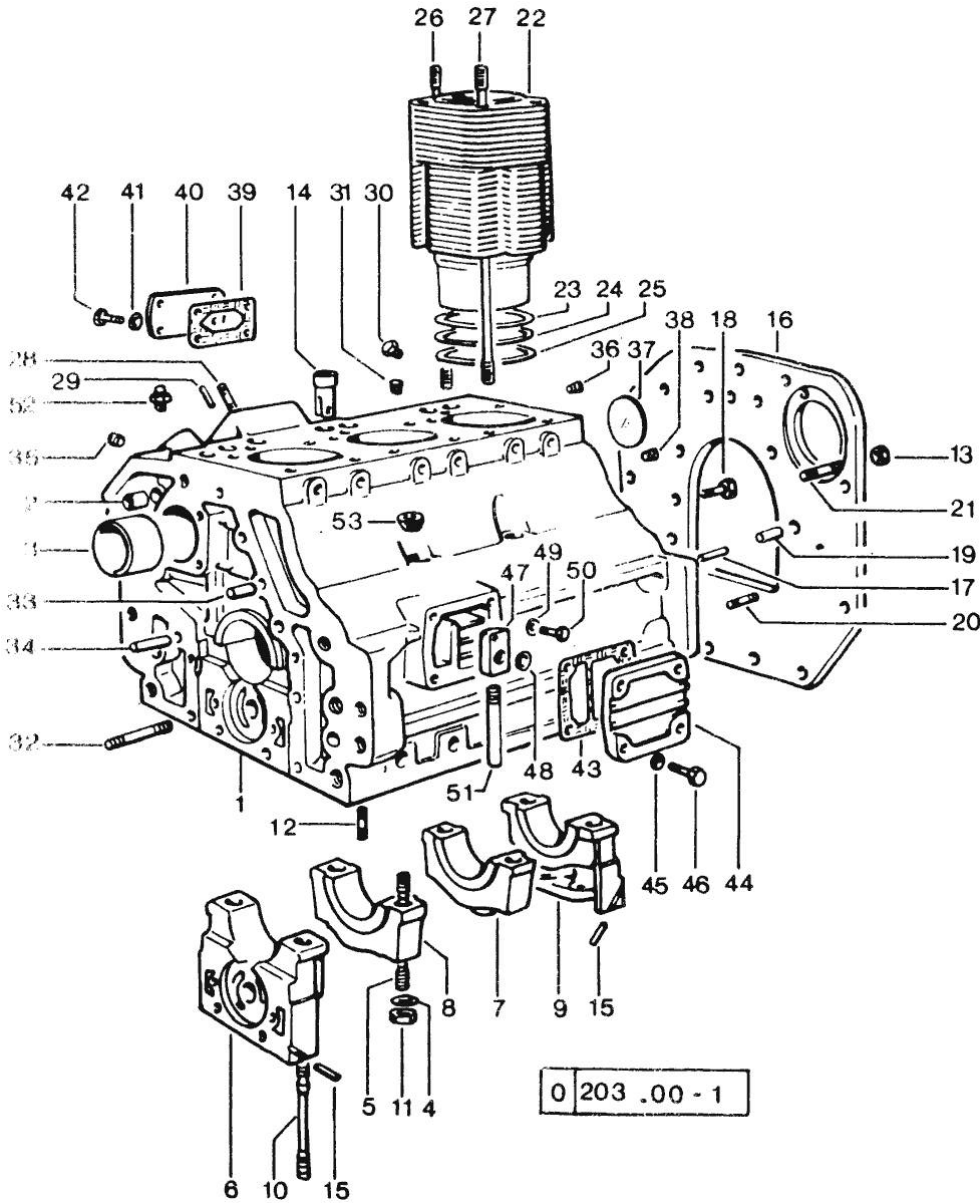


Fig.	P/n	QTY	Name
			=> 43094 - 43093 <= ORDER ALSO:2.1579.455.1 E 2.0112.013.2 SEE DRAWING "FUEL SYSTEM - INJECTION PUMP" FIG.9 AND FIG.14 ☞ 01.00.6
40	0.044.1164.2	1	small cover => 43094 - 43093 <= ORDER ALSO:2.1579.455.1 E 2.0112.013.2 SEE DRAWING "FUEL SYSTEM - INJECTION PUMP" FIG.9 AND FIG.14 ☞ 01.00.6
41	2.1310.004.2	4	flat washer 8.4x17
42	2.0112.204.2	4	screw m 8 p.1.25x14
43	0.044.1153.0/10	1	gasket
44	0.044.1154.0	1	cover
45	2.1474.009.1	4	spring washer 8
46	2.0112.209.2	4	screw m 8 p 1.25 x 25
47	0.044.1155.2/20	1	cover
48	0.045.1150.0	1	oil seal
49	2.1474.009.1	1	spring washer 8
50	2.0312.206.2	1	screw m 8 p 1.25 x 20
51	0.044.1152.0	1	tube
52	0.054.1152.0	1	pipe fitting
53	2.3139.006.1	2	plug

Section: ENGINE

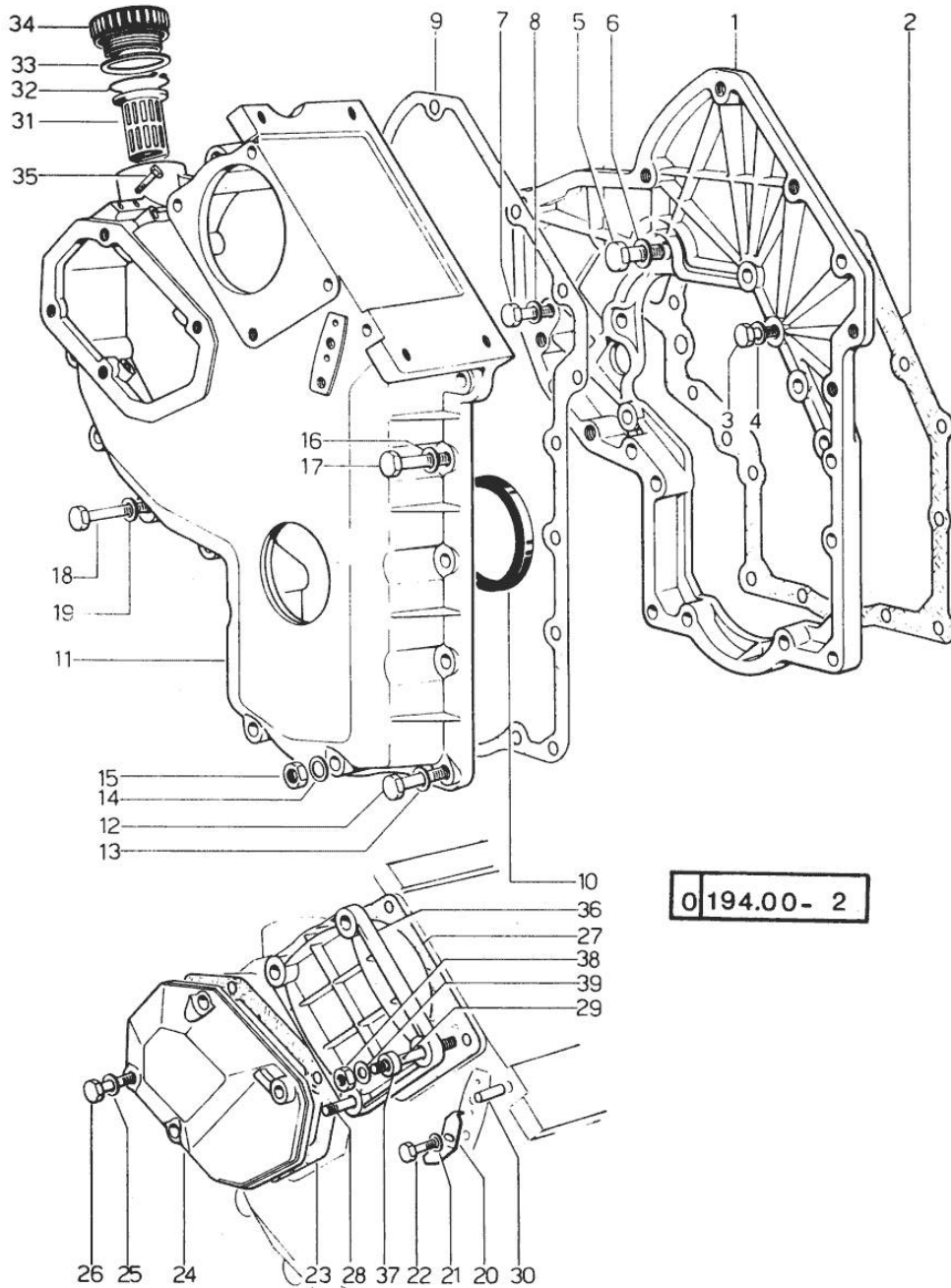
TIMING CASE

Fig.	P/n	QTY	Name
------	-----	-----	------

Notes:

[CONDOR 55 Synchro 2000 <-]

1	0.048.1131.0	1	flange
2	0.041.1153.0	1	gasket
3	2.0112.209.2	5	screw m 8 p 1.25 x 25
4	2.1474.009.1	5	spring washer 8
5	2.0119.034.1	1	screw m 14 p.2x20
6	2.1560.010.0	1	gasket 14.2 x 20
7	2.0112.207.2	1	screw m 8 p 1.25 x 20
8	2.1474.009.1	1	spring washer 8
9	0.041.1152.0	1	gasket
10	2.1519.010.0	1	special oil seal 58x80x10
11	0.048.1132.0/10	1	guard 41273 <=
11	0.048.1132.0/30	1	guard => 41274
12	2.0112.217.2	5	screw m 8 p.1.25 x 45
13	2.1474.009.1	5	spring washer 8
14	2.1560.003.0	2	copper gasket 8.2 x 12
15	2.1011.405.2	2	nut m 8 p.1
16	2.1474.009.1	2	spring washer 8
17	2.0112.211.2	2	screw m 8 p.1.25 x 30
18	2.0112.222.2	4	screw m 8 p.1.25x65
19	2.1474.009.1	4	spring washer 8
20	0.041.1158.0	1	index
21	2.1310.004.2	1	flat washer 8.4x17
22	2.0112.204.2	1	screw m 8 p.1.25x14
23	0.048.1152.0	1	gasket
24	0.048.1150.0/20	1	cover
25	2.1560.005.0	4	copper gasket 10.2 x 14
26	2.0112.313.2	1	screw m 10 p.1.5 x 35
26	2.0112.315.2	3	screw m 10 p.1.5 x 40
27	0.041.1154.0	1	gasket
28	2.0432.015.1	1	stud bolt m 8 p 1.25 - m 8 p. 1x50
29	2.0432.028.1	3	stud bolt m 8 p.1.25-1x130
30	2.1653.717.0	1	pin 8 x 40
31	0.041.1159.0/10	1	filter
32	2.1411.012.1	1	circlip 30
33	0.041.1135.3	1	plug
34	2.1569.072.0	1	gasket 32 x 39.5 x 2
35	2.0119.081.2	2	screw
36	0.037.1151.0	1	cover
37	2.1579.188.0	4	spacer 8.5x18x9

Section: ENGINE
TIMING CASE

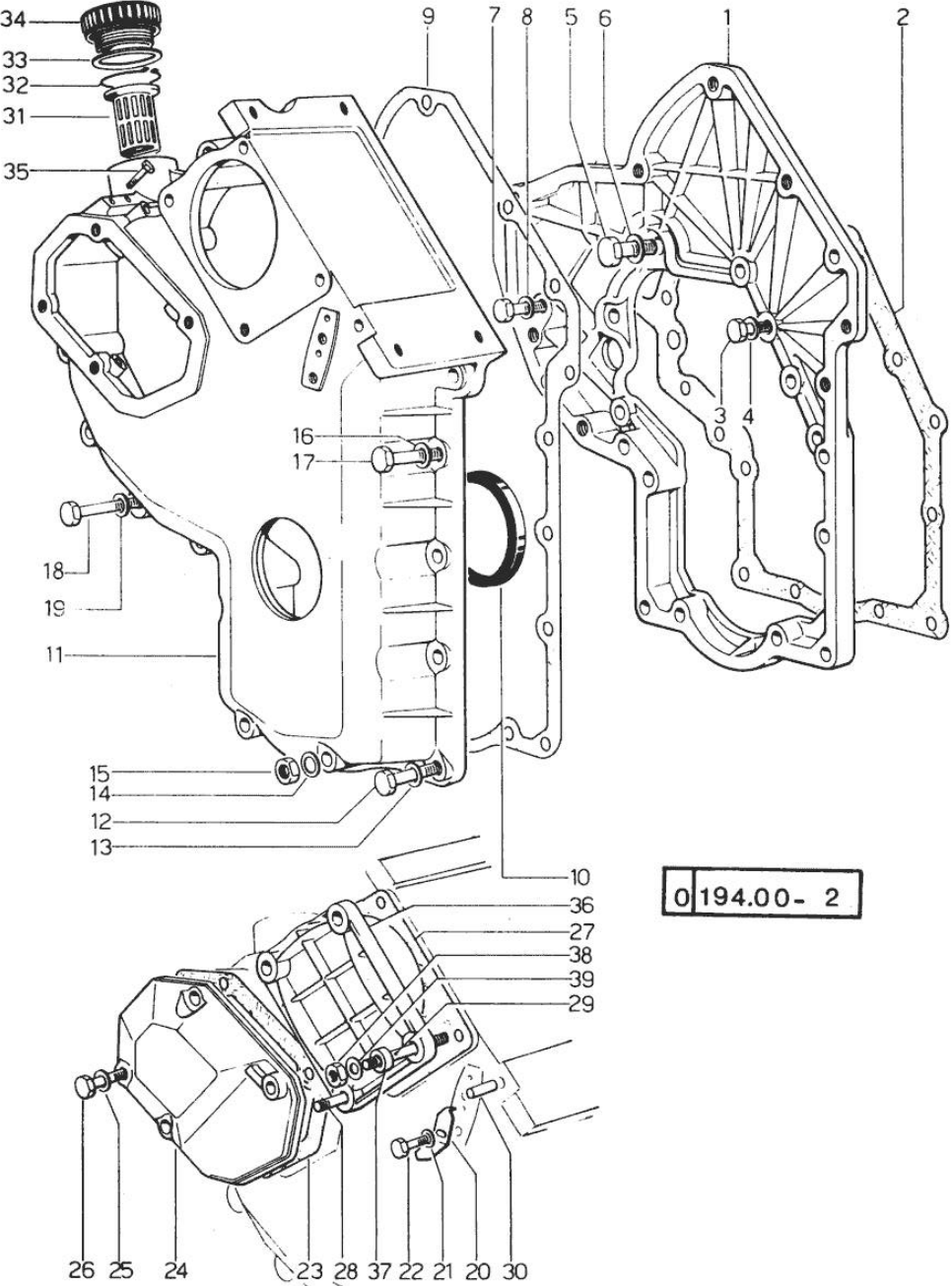


Fig.	P/n	QTY	Name
FOR TYPES WITH HYDROSTATIC STEERING			
37	2.1579.191.0	4	spacer 8.5 x 18 x 20
38	2.1011.505.2	4	nut m 8 p.1
39	2.1310.004.2	4	flat washer 8.4x17

Section: ENGINE

CRANKSHAFT

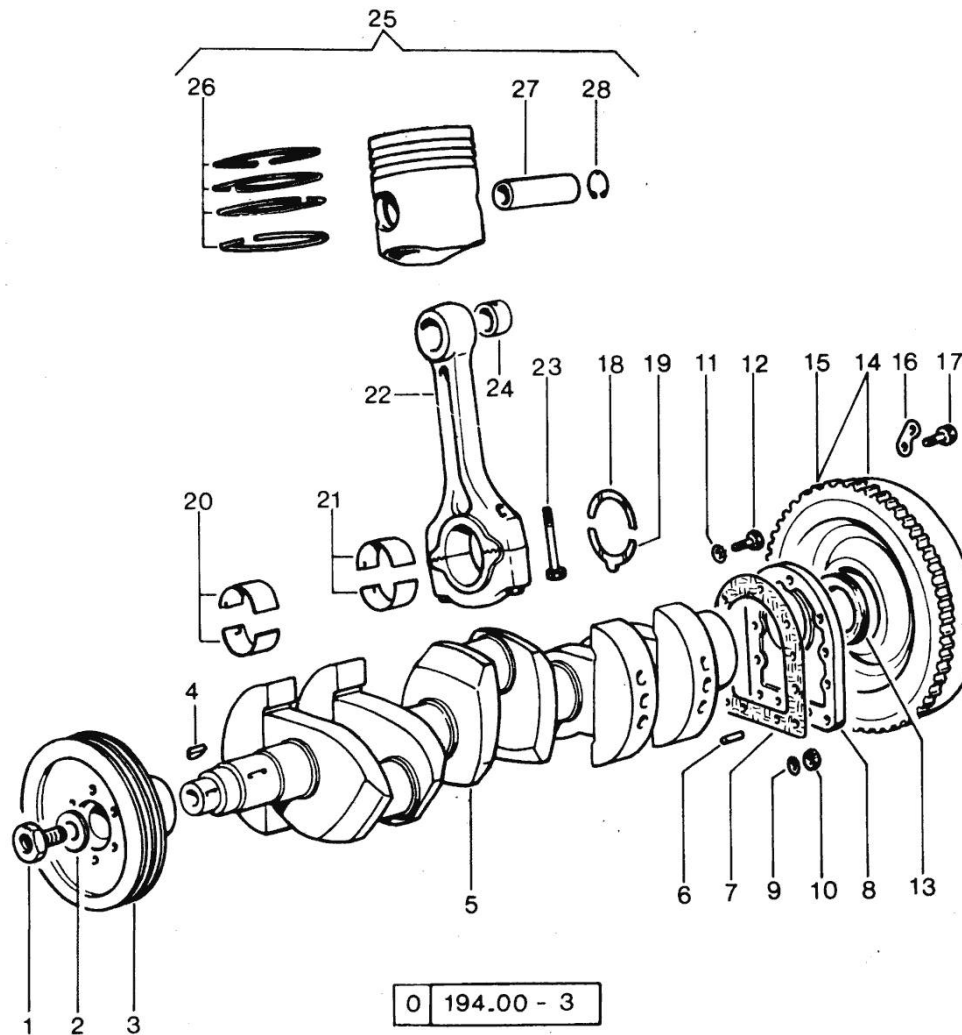
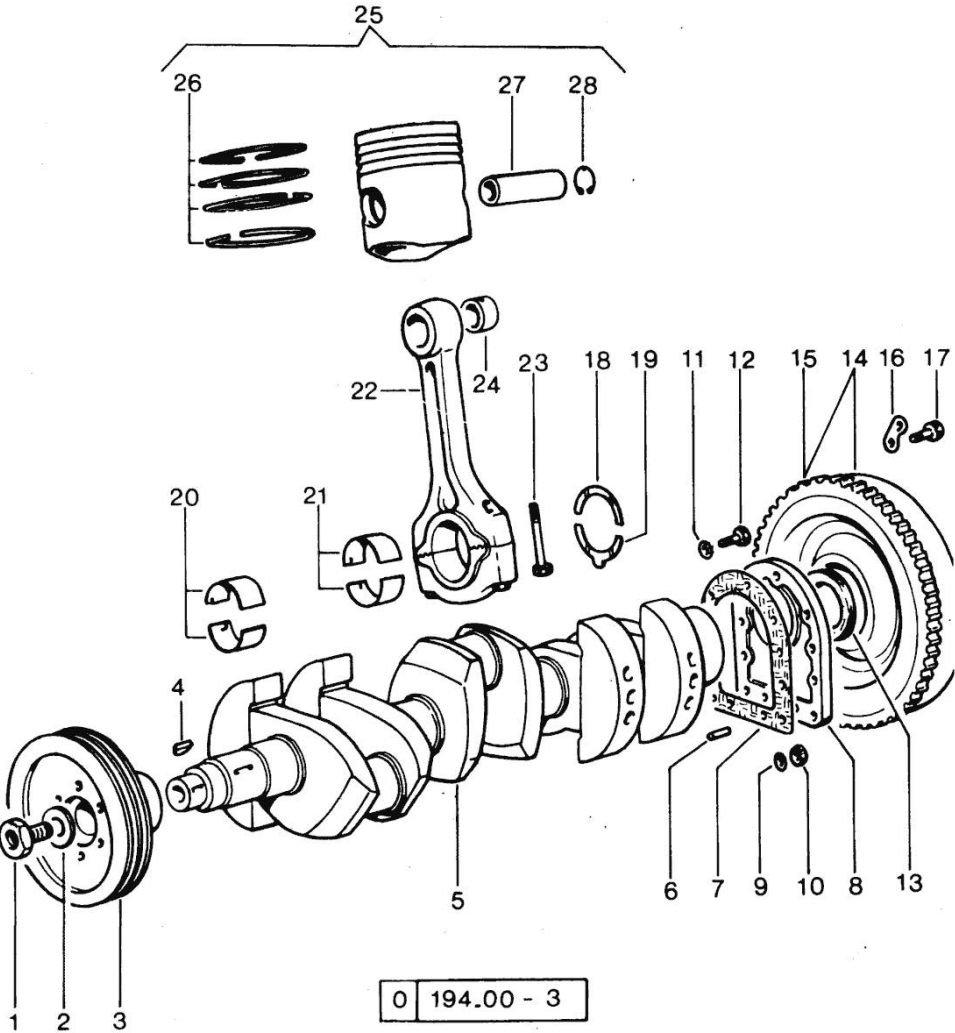


Fig.	P/n	QTY	Name
Notes:			
[CONDOR 55 Syncro 2000 <-]			
1	2.0129.032.2	1	screw m 24 p.2x45
2	0.001.6020.0	1	shoulder
3	0.044.1244.0/50	1	pulley
4	2.1799.002.0	1	stick 10x13
5	0.054.1210.4	1	crankshaft
6	2.1652.915.0	2	cylindrical plug 12x35
7	0.029.1250.0	1	gasket
8	0.029.1240.0	1	flange
9	2.1560.006.0	2	gasket 10.2 x 16
10	2.1011.421.2	2	nut m 10 p.1.25
11	2.1474.010.1	7	spring washer 10
12	2.0112.309.2	7	screw m 10 p.1.5 x 25
13	2.1529.045.0	1	oil seal
14	0.029.1241.3	1	old part number
14	0.054.1252.3/10	1	old part number 3516 <- -> 3517
15	0.038.1242.0	1	crown wheel Z = 120, mm 15
16	2.1379.006.0	3	lock-tab 15x15x36,5
17	2.0122.515.7	6	screw
18	0.001.4544.0	2	shoulder ring + mm 0.05
18	0.001.4545.0	2	shoulder ring + mm 0.10
18	0.001.4546.0	2	shoulder ring + mm 0.15
18	0.042.1218.0	2	shoulder ring STANDARD
19	0.001.4547.0	2	shoulder ring + mm 0.05
19	0.001.4548.0	2	shoulder ring + mm 0.10
19	0.001.4549.0	2	shoulder ring + mm 0.15
19	0.042.1219.0	2	shoulder ring STANDARD
20	0.029.0066.0	8	main half bushing - mm 1.00
20	0.029.1215.0/10	8	main half bushing
20	0.029.1215.7	8	main half bushing - mm 0.25
20	0.029.1215.8	8	main half bushing - mm 0.50
20	0.029.1215.9	8	main half bushing - mm 0.75
21	0.039.0068.0	6	con.rod half bushing - mm 1.016
21	0.039.1225.0	6	con.rod half bushing
21	0.039.1225.7	6	con.rod half bushing -mm 0.254
21	0.039.1225.8	6	con.rod half bushing -mm 0.508
21	0.039.1225.9	6	con.rod half bushing -mm 0.762
22	0.052.1220.3	3	engine connecting rod
23	0.039.1250.0	6	screw m 14 p.1.5x63
24	2.1559.114.0	3	bushing

Section: ENGINE
CRANKSHAFT

Fig.	P/n	QTY	Name
25	0.053.0060.6	3	complete piston
25	0.053.0061.6	3	complete piston +mm 0.5
25	0.053.0062.6	3	complete piston + mm 1
26	0.053.0052.6	3	piston ring set
26	0.053.0053.6	3	piston ring set +mm 0.5
26	0.053.0054.6	3	piston ring set + mm 1
27	0.002.4167.0	3	piston pin
28	2.1411.014.1	6	circlip 35

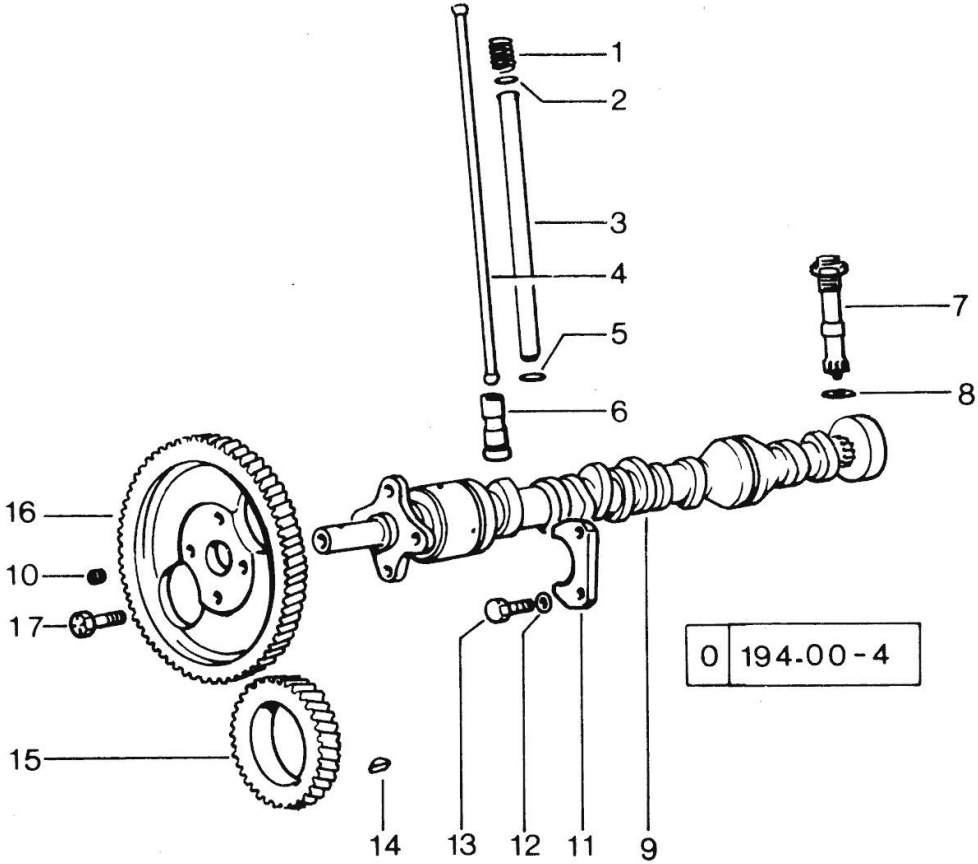


Section: ENGINE
CAMSHAFT

Fig.	P/n	QTY	Name
------	-----	-----	------

Notes:
[CONDOR 55 Syncro 2000 <-]

1	2.4019.162.1/20	6	spring 17.2x46x1.8
2	2.1539.022.0	6	special oil seal 12.37x2.62
3	0.041.1332.0	6	sleeve
4	0.041.1331.3	6	rod
5	2.1539.020.0	6	special oil seal 13.95x2.62
6	0.044.1330.0/10	6	tappets
7	0.041.1355.3	1	transmission
8	2.1560.013.0	1	gasket 18.2x22
9	0.054.1310.0/20	1	camshaft
10	2.3130.001.1	1	plug 1/8" gas
11	0.027.1314.0	1	flange
12	2.1470.004.2	2	lock washer 8
13	2.0112.207.2	2	screw m 8 p 1.25 x 20
14	2.1720.010.0	1	key 5x9
15	0.040.1320.0	1	gear z = 33
16	0.041.1321.0	1	gear z = 66
17	2.0139.005.1	4	screw m 10 p.1 x 25



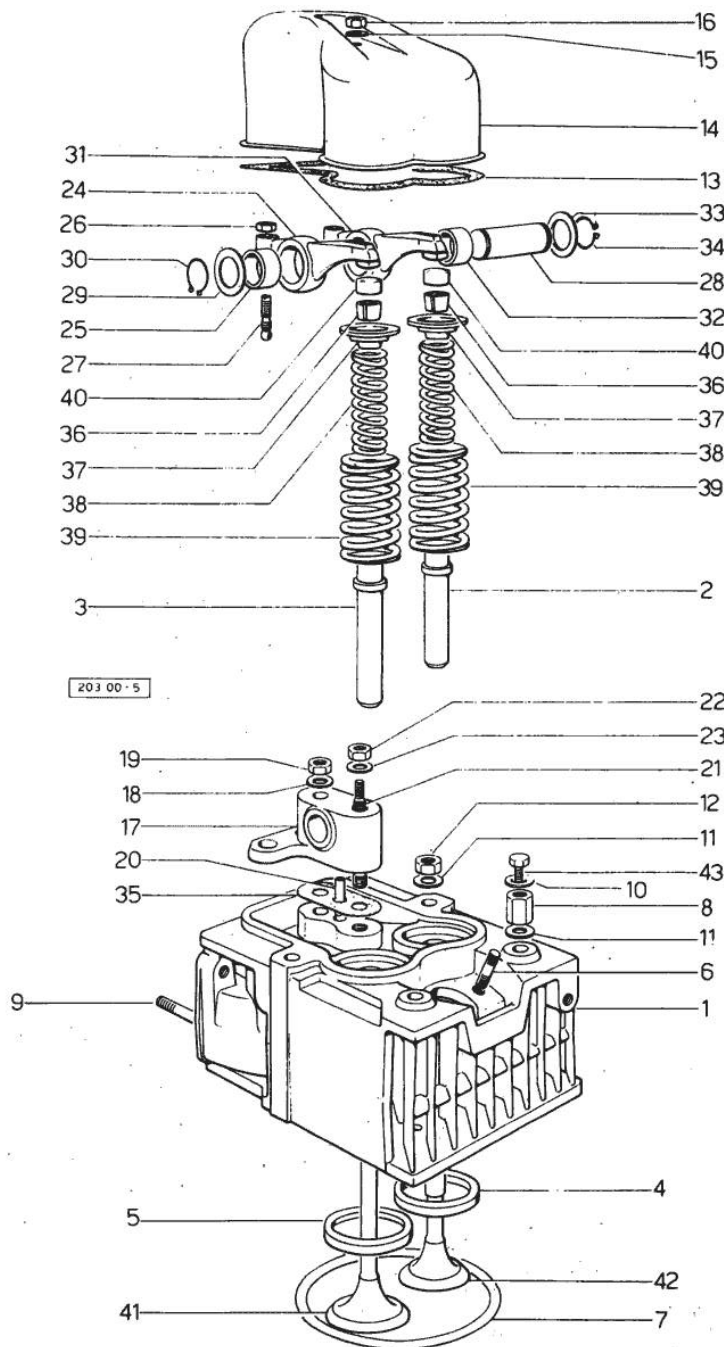
Section: ENGINE
CYLINDER HEAD

Fig.	P/n	QTY	Name
Notes:			
[CONDOR 55 Syncro 2000 <-]			
0	0.054.0057.6	1	gasket set - FOR 1 CYLINDER VALVE GRINDING AND PISTON RINGS REPLACEMENT
1	0.053.1410.3/10	3	engine head
2	0.037.1417.0/10	3	valve guide
3	0.037.1416.0	3	valve guide
4	0.037.1452.0/10	3	valve seat
5	0.053.1450.0	3	valve seat
6	2.0439.087.1	6	stud bolt
7	2.1569.077.0/10	3	gasket
8	2.1019.037.0	5	special nut m 12 p.1.5
9	2.0432.007.1	5	stud bolt m 8 p.1.25 / p.1 x 30
10	2.1310.007.2	3	flat washer 13 x 24
11	2.1599.406.0	12	shoulder ring
12	2.1019.025.0	7	special nut m 12 p.1.5
13	0.029.1450.0	3	gasket
14	0.039.1440.0	3	cap
15	2.1560.004.0	3	copper gasket 8.2 x 14
16	2.1099.056.1	3	special nut m8 p.1
17	0.041.1430.0	3	support
18	2.1599.160.0	3	washer 10.5x19x4
19	2.1099.035.0	3	special nut m 10 p.1.25
20	0.029.1452.0	3	tube
21	0.039.1451.0	3	stud bolt
22	2.1011.421.2	3	nut m 10 p.1.25
23	2.1310.006.2	3	flat washer 10.5x21
24	0.002.5937.3/30	3	rocker arm
25	2.1559.021.0/40	3	bushing 15x19x22
26	2.1011.405.2	6	nut m 8 p.1
27	0.021.1434.0	6	screw
28	0.041.1431.0	3	pin
29	2.1599.019.0	3	shoulder ring 19.5x31x2
30	2.1410.055.1	3	circlip 19
31	0.002.5936.3/40	3	rocker arm
32	2.1559.021.0/40	3	bushing 15x19x22
33	2.1599.019.0	3	shoulder ring 19.5x31x2
34	2.1410.055.1	3	circlip 19
35	0.034.1450.0	3	tappet gasket
36	0.002.9193.0/10	6	conical valve cotter
37	0.002.9215.0/10	6	cup
38	2.4019.194.0	6	spring 22.70x50.7x2.1

Section: ENGINE
CYLINDER HEAD

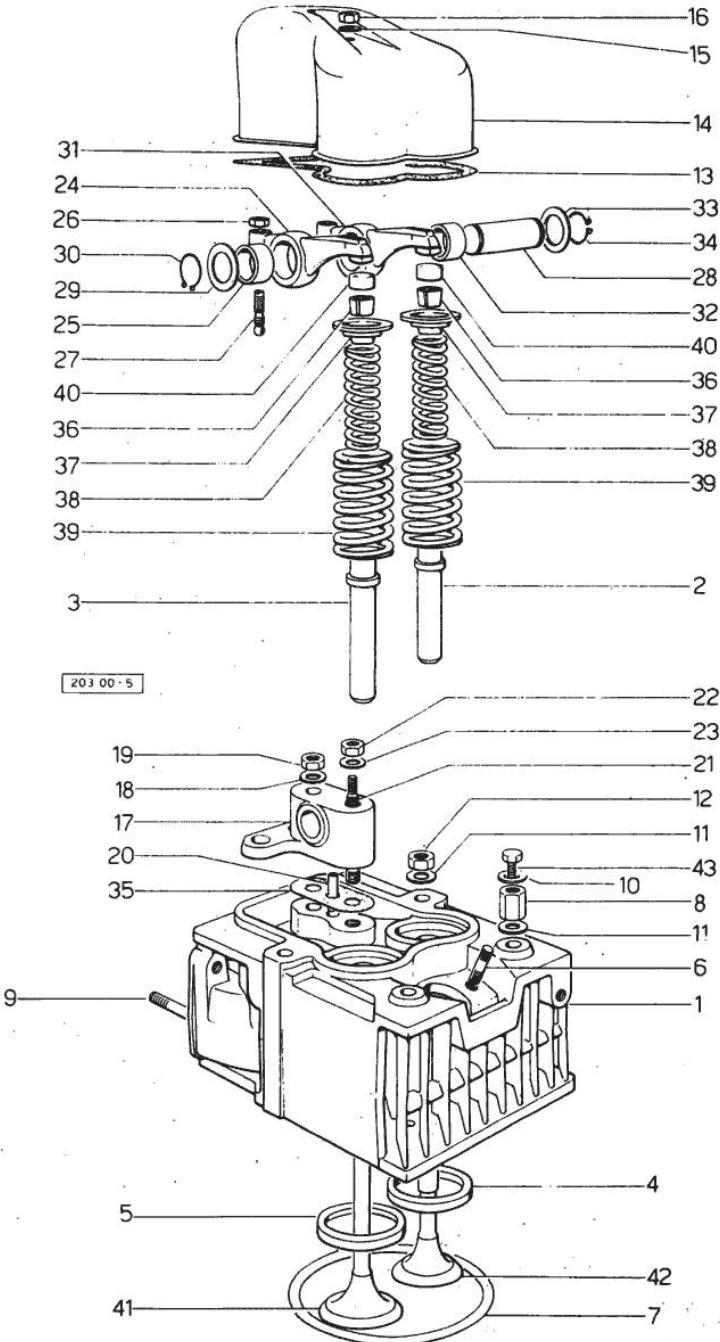


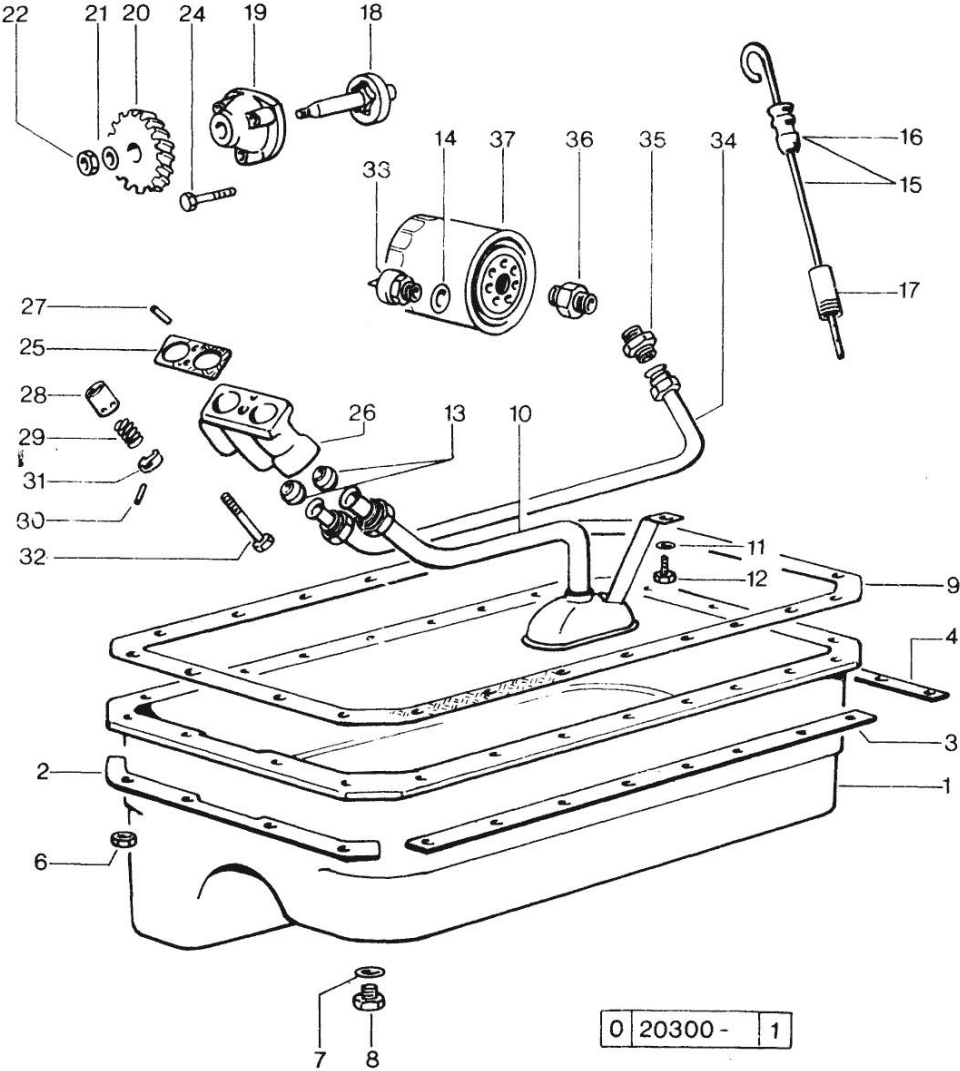
Fig.	P/n	QTY	Name
39	2.4019.193.0	6	spring 36.15x55.2x3.2
40	0.021.1453.0/20	6	small cover
41	0.052.1420.0	3	inlet valve Ø mm 9
42	0.039.1421.0	3	exhaust valve Ø mm 9
43	2.0119.053.1	3	screw

Section: ENGINE
LUBRICATION

Fig.	P/n	QTY	Name
------	-----	-----	------

Notes:
 [CONDOR 55 Syncro 2000 <-]

1	0.054.1510.2/10	1	oil sump
2	0.053.1550.0/10	1	small plate
3	0.035.1551.0/10	2	small plate
4	0.053.1551.0	1	small plate
6	2.1011.405.2	24	nut m 8 p.1
7	2.1560.054.0	1	gasket 21 x 26
8	2.3199.001.2	1	plug 1/2" gas
9	0.029.1512.2	1	gasket
10	0.054.1531.3/10	1	tube
11	2.1310.004.2	1	flat washer 8.4x17
12	2.0112.204.2	1	screw m 8 p.1.25x14
13	2.3359.016.1	2	nosepiece
14	2.1560.008.0	1	gasket 12.2 x 18
15	0.054.1513.3	1	dipstick
16	0.034.1551.0	1	gasket
17	0.044.1555.0	1	spacer
18	0.054.1524.3/10	1	rotor
19	0.054.1520.0	1	pump casing
20	0.054.1521.0	1	gear
21	2.1310.006.2	1	flat washer 10.5x21
22	2.1121.107.2	1	self-locking nut m 10 p 1.25
24	2.0112.215.2	3	screw m 8 p.1.25 x 40
25	0.054.1550.0	1	gasket
26	0.054.1530.0/20	1	tip
27	2.1651.305.2	1	cylindrical plug 4 x 12
28	0.054.1557.0	1	small piston
29	2.4019.229.1	1	spring
30	2.1630.213.0	1	roll pin 3x32
31	0.054.1558.0/10	1	stop
32	2.0132.213.2	1	screw
33	2.7099.040.0/10	1	pressure switch
34	0.053.1543.2	1	tube
35	2.3339.159.1/10	1	pipe fitting
36	2.3339.094.1/10	1	pipe fitting m 20 p.1.5-3/4 gas
37	0.044.1567.0	1	oil filter element



0 20300 - 1

Section: ENGINE

FUEL FEED - INJECTION PUMP

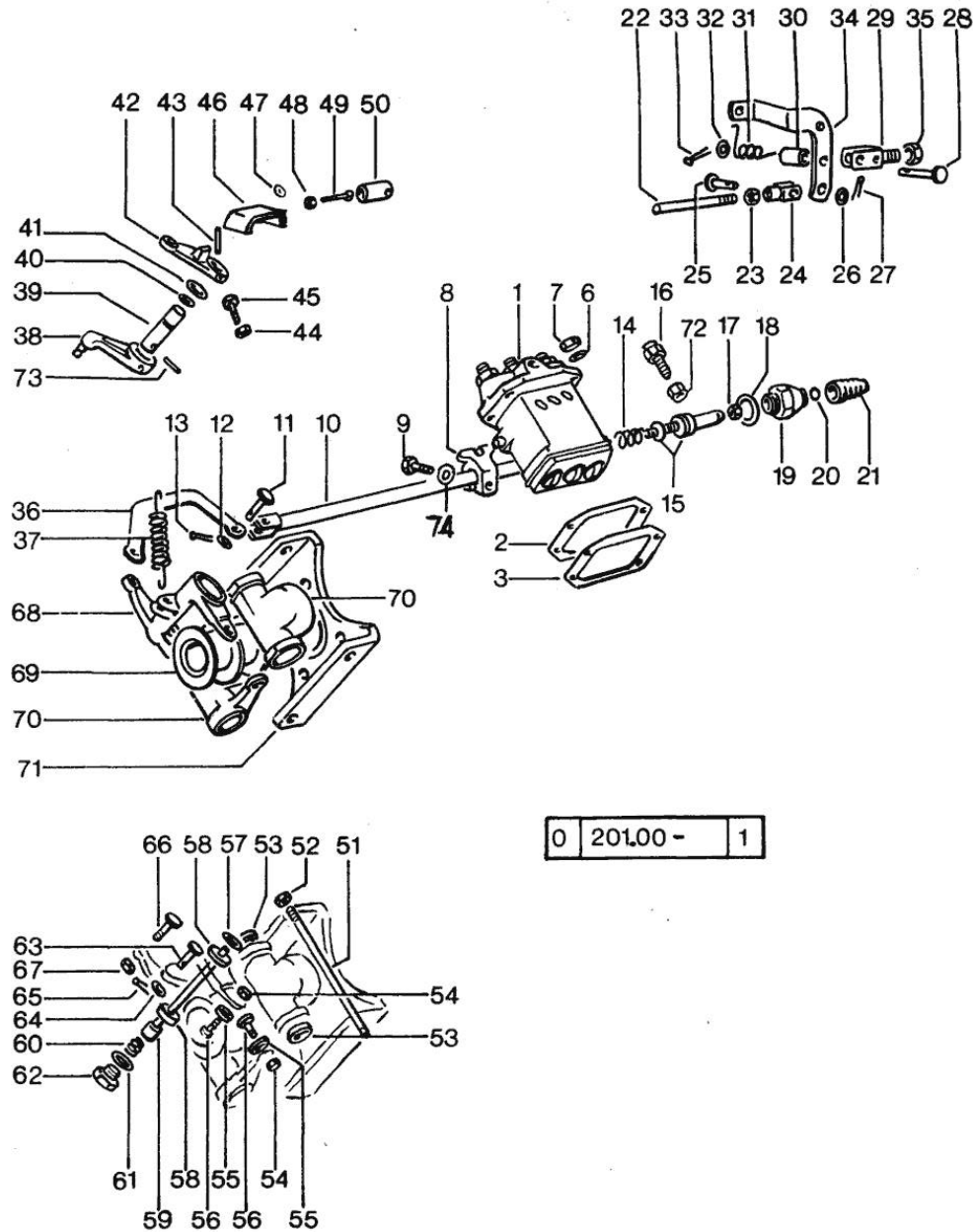


Fig.	P/n	QTY	Name
Notes:			
[CONDOR 55 Synchro 2000 <-]			
1	2.4639.060.0	1	injector pump ⇒ 01.00.8
2	0.041.1658.0	1	shim mm 0.20
2	0.041.1659.0	1	shim mm 0.1
3	0.041.1694.0	1	gasket mm 0.1
3	0.041.1695.0	1	gasket mm 0.20
3	0.044.1672.0	1	shim mm 0.50
6	2.1311.006.2	4	flat washer 8
7	2.1099.056.1	4	special nut m8 p.1
8	0.046.1652.0	1	bracket
9	2.0112.013.2	1	screw m 6 p.1 x 35
10	0.044.1613.2	1	rod
11	2.1670.103.2	1	pin
12	2.1311.004.1	1	flat washer 6
13	2.1690.205.0	1	split pin A2x12
14	2.4019.178.1/10	1	spring 14.6x34x0.8
15	0.041.1678.6	1	adapter
16	0.044.1669.3/10	1	device
17	2.1011.505.2	1	nut m 8 p.1
18	2.1560.019.0	1	copper gasket 24.3x30
19	0.041.1666.0/30	1	plug 43093 <=
19	0.041.1666.0/40	1	plug => 43094
20	2.1530.015.0	1	oil seal 8.30x2.40
21	0.000.5617.0	1	guard
22	0.041.1654.0/30	1	rod => 40103 - 43093 <=
22	0.041.1654.0/40	1	ferrule => 43094
22	0.194.6750.6	1	bracket 40102 <=
23	2.1011.103.2	1	nut m 6 p.1
24	0.054.1653.0/10	1	fork
25	2.1670.002.2	1	pin 5x14x12
26	2.1310.001.2	1	flat washer 5.3 x 10
27	2.1690.104.0	1	split pin a.1 5x10
28	2.1670.311.2	1	pin 8x38x35
29	0.054.1676.0	1	support => 40103
29	0.194.6750.6	1	bracket

Thank you so much for reading.
Please click the “Buy Now!”
button below to download the
complete manual.



After you pay.

You can download the most
perfect and complete manual in
the world immediately.

Our support email:

ebooklibonline@outlook.com