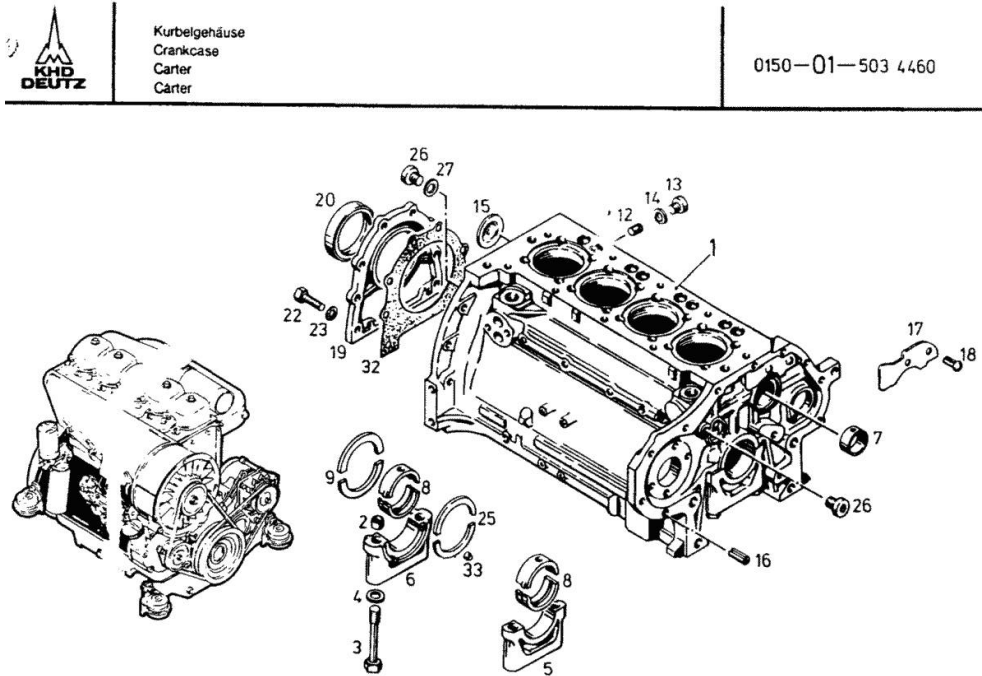


Section: ENGINE

CRANK CASE Motor No. 7 615 055 <<

Fig.	P/n	QTY	Name
Notes:			
[DX 4 .10]			
1	04150837	1	crankcase ORDER FROM PICTURE NO.2 TO 7 12 BIS 18,26,27,33
2	03362279	10	bushing
3	01136990	10	screw DIN 000931-BM14 X110 - 10.9
4	01216107	10	washer 15x23x1,5 H 002308-15 X23X1,5
7	02139737	1	bushing
8	03362379	5	bearing NORMAL 70.00 MM RD(2.7559 IN. UNDERSIZE STEP ITEM 950-955 FOR INSIDE AND OUTSIDE ITEM 956
9	02230164	1	shim NORMAL 3.00 MM (0.1181IN.) OVERSIZE STEP 970-973
12	01215235	5	plug
13	01110422	4	screw DIN 000908-M12X1,5-ST
14	01118673	4	oil seal DIN 007603-A 12 X 15,5-CU
15	01216240	1	disc
16	01167266	2	bush H 002341-B11X16
17	02231082	1	plate
18	01115333	2	self tapping screw ISO 008746- 6 X10-ST -A4C
19	02234870	1	cover
20	02234134	1	oil seal
22	01112322	8	screw m 8 p.1.25 x 20 ISO 004017-M 8 X 20 - 8.8-A4C
23	01107101	8	washer 8.4 DIN 000125-A 8,4-140HV-A4C
25	02230176	1	shim 3,00 MM (0.1181IN.) OVERSIZE ITEM 960-963
26	04159934	2	screw
27	04159935	1	oil seal
32	03362337	1	gasket
33	03362448	2	pin
950	03362380	5	bearing



Section: ENGINE

CRANK CASE Motor No. 7 615 055 <<

Kurbelgehäuse
Crankcase
Carter
Carter

0150-01-503 4460

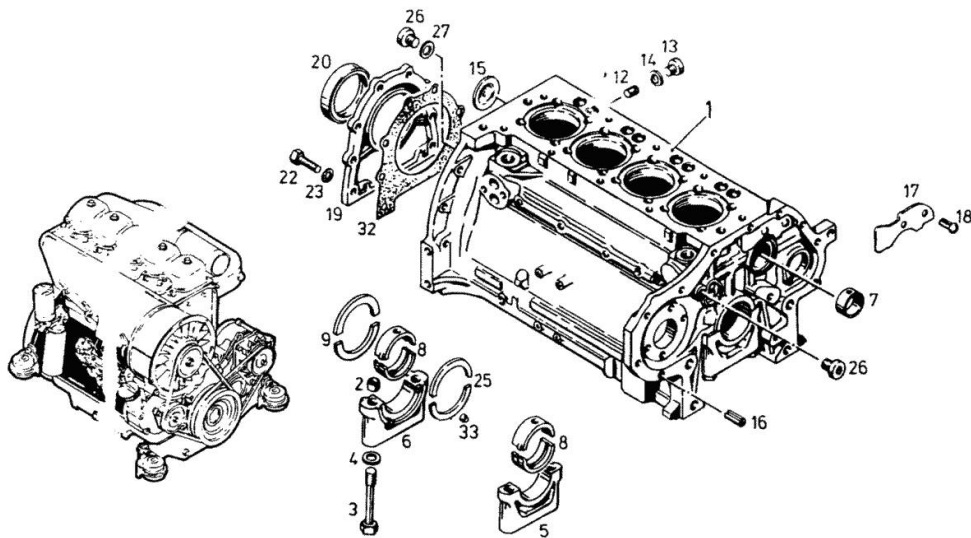


Fig.	P/n	QTY	Name
951	03362381	5	1.UNDERSIZE STEP 69.75 MM RD (2.7459IN.) bearing
952	03362382	5	2.UNDERSIZE STEP 69.50 MM RD (2.7362IN.) bearing
953	03362383	5	3.UNDERSIZE STEP 69.25 MM RD (2.7263 IN.) bearing
954	03362384	5	4.UNDERSIZE STEP 69.00 MM RD (2.7165 IN.) bearing
955	03362385	5	5.UNDERSIZE STEP 68.75MMRD (2,7066IN.) bearing
956	02233347	5	6.UNDERSIZE STEP 68.50 MM RD (2.6968IN.) bearing
960	02230177	1	F.INSIDE(69.75MM RD) AND F. OUTSIDE (75.50MM RD) shim
961	02230178	1	1.OVERSIZ STEP 3.25 MM (0.1279IN.) shim
962	02230179	1	2.OVERSIZ STEP 3.50 MM (0.1378 IN.) shim
963	02230180	1	3.OVERSIZ STEP 3.75MM (0.1476IN.) shim
970	02230166	1	4.OVERSIZ STEP 4.00 MM (0.1575IN.) shim
971	02230167	1	1.OVERSIZ STEP 3.25 MM (0,1279IN.) shim
972	02230168	1	2.OVERSIZ STEP 3.50 MM (0,1378 IN.) shim
973	02230169	1	3.OVERSIZ STEP 3.75 MM (0.1476 IN.) shim
		1	4.OVERSIZ STEP 4.00 MM (0.1575IN.) shim

Section: ENGINE

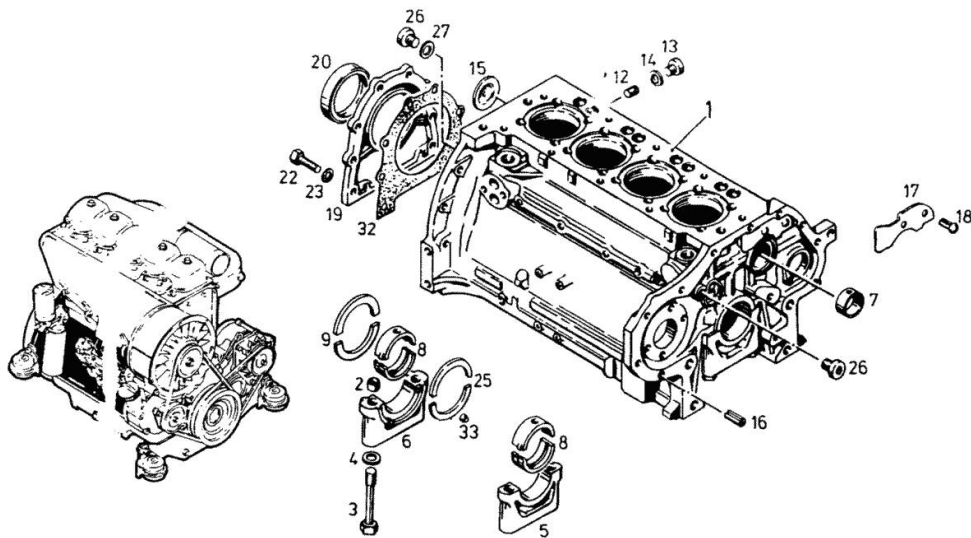
CRANK CASE Motor No. 7 615 055 <<

Fig.	P/n	QTY	Name
980	01016120	1	compound 1 kg H 000699-DEUTZ DW 47- 310 ML



Kurbelgehäuse
Crankcase
Carter
Carter

0150-01-503 4460



Section: ENGINE

CRANK CASE Motor No. >> 7 618 130

Kurbelgehäuse
Crankcase
Carter
Carter

0150 -01 -0506 3062

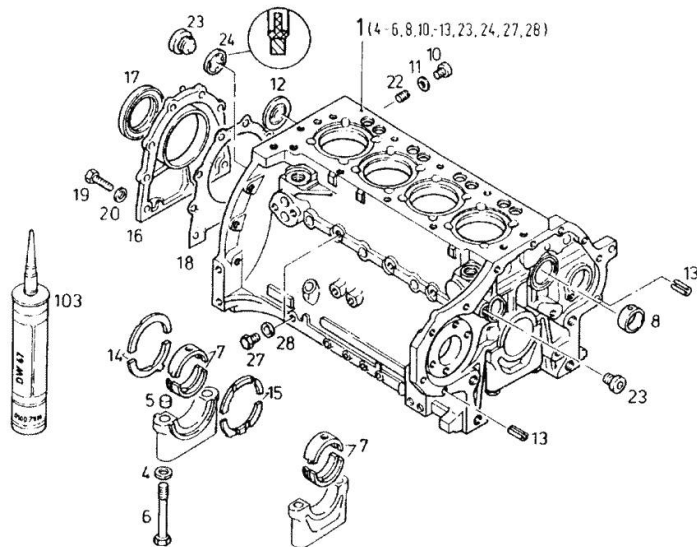


Fig.	P/n	QTY	Name
Notes: [DX 4 .10]			
1	04156246	1	crankcase ORDER FROM PICTURE NO.4 TO 6 10 BIS 13, 22-24,27,28. FROM 2301 TO 2800 RPM
4	01216107	10	washer 15x23x1,5 H 002308-15 X23X1,5
5	04160764	10	bushing
6	04156058	10	screw
7	03362379	5	bearing NORMAL (A)MM, UNDERSIZE STEP SEE ITEM(B) A = 70,00 B = 950-955
10	01110422	5	screw DIN 000908-M12X1,5-ST
11	01118673	5	oil seal DIN 007603-A 12 X 15,5-CU
12	01216240	1	disc
13	01167266	2	bush H 002341-B11X16
14	02230181	1	shim NORMAL (A)MM, OVERDIMENSION LEVEL SEE ITEM (B) A = 3,00 B = 964-968
15	02230171	1	shim mm 3.00 NORMAL (A)MM, OVERDIMENSION LEVEL SEE ITEM (B) A = 3,00 B = 960-963
16	02234870	1	cover
17	04230392	1	special oil seal
18	03362337	1	gasket
19	01112322	8	screw m 8 p.1.25 x 20 ISO 004017-M 8 X 20 - 8.8-A4C
20	01107101	1	washer 8.4 DIN 000125-A 8,4-140HV-A4C
22	01215235	5	plug
23	01118998	2	screw DIN 007604-CM10X1 -ST-A4C
24	01118659	2	oil seal

Section: ENGINE

CRANK CASE Motor No. >> 7 618 130

Kurbelgehäuse
Crankcase
Carter
Carter

0150 -01 -0506 3062

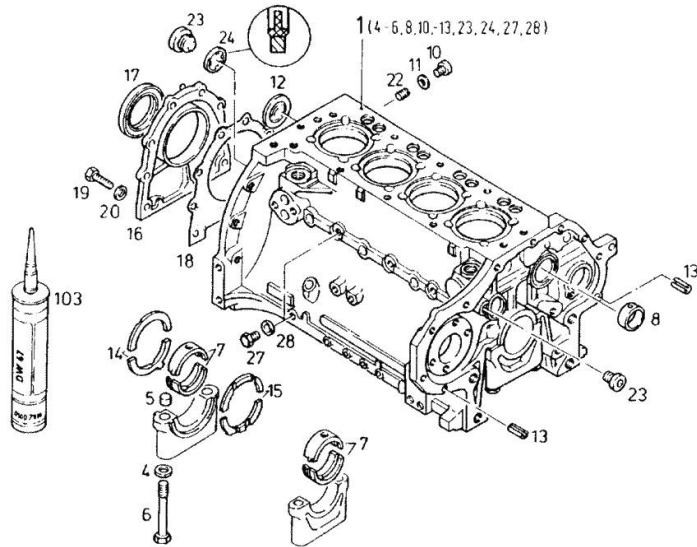


Fig.	P/n	QTY	Name
			DIN 007603-A 10 X 13,5-CU
27	04159934	2	screw
28	04159935	1	oil seal
103	01016120	1	compound 1 kg H 000699-DEUTZ DW 47- 310 ML
950	03362380	5	bearing 1.UNDERSIZE STEP 69.75MM RD (2,7459 IN.)
951	03362381	5	bearing 2.UNDERSIZE STEP 69.50MM RD (2,7362 IN.)
952	03362382	5	bearing 3.UNDERSIZE STEP 69.25MM RD (2,7263 IN.)
953	03362383	5	bearing 4.UNDERSIZE STEP 69.00MM RD (2,7165 IN.)
954	03362384	5	bearing 5.UNDERSIZE STEP 68.75MM RD (2,7066 IN.)
955	03362385	5	bearing 6.UNDERSIZE STEP 68.50MM RD (2,6968 IN.)
956	02230182	1	shim 1.OVERSIZ STEP 3.25MM (0,1279 IN.)
957	02230183	1	shim 2.OVERSIZ STEP 3.50MM (0,1378 IN.)
958	02230184	1	shim 3.OVERSIZ STEP 3.75MM (0,1476 IN.)
959	02230185	1	shim 4.OVERSIZ STEP 4.00MM (0,1575 IN.)
960	02230172	1	shim 1.OVERSIZ STEP 3.25MM (0,1279 IN.)
961	02230173	1	shim 2.OVERSIZ STEP 3.50MM (0,1378 IN.)
962	02230174	1	shim 3.OVERSIZ STEP 3.75MM (0,1476 IN.)

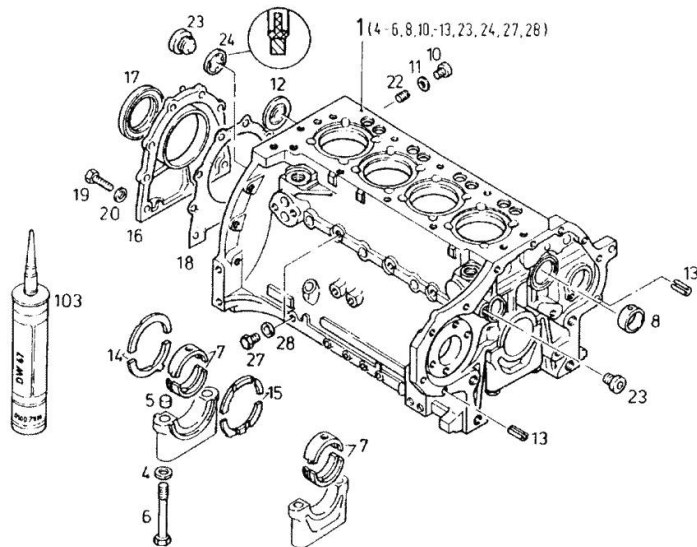
CRANK CASE Motor No. >> 7 618 130

Fig.	P/n	QTY	Name
963	02230175	1	shim 4.OVERSIZE STEP 4.00MM (0,1575 IN.)
964	02233347	5	bearing



Kurbelgehäuse
Crankcase
Carter
Carter

0150-01-0506 3062



Section: ENGINE

INTERMEDIATE GEAR BEARING

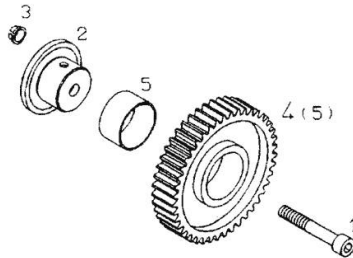
Fig.	P/n	QTY	Name
Notes:			
[DX 4 .10]			
1	01110688	1	screw DIN 000912- M10 X 60 -10.9-A4 C
2	04156284	1	pin
3	04156283	1	bush
4	04153996	1	gear wheel WITH ITEM 5
5	03362538	1	bushing



ZWISCHENRADLAGERUNG
IDLER GEAR BEARING
TOURILLON DE PIGNON INTERMEDIAIRE
SOPORTE PARA RUEDA INTERMEDIA

0150 -01- 0504 2796

1



Section: ENGINE

FRONT COVER

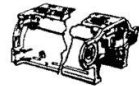
Fig.	P/n	QTY	Name
------	-----	-----	------

Notes:
[DX 4 .10]

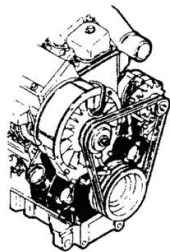
1	01115459	1	pin ISO 008752- 6 X 45
2	02234133	1	oil seal 65X85X13
3	01171243	1	oil seal H 002927- 82 X 3,15 -MVQ-1-50
4	01102396	1	screw ISO 004017-M 8 X 8 - 8.8-A4C
6	01016120	1	compound 1 kg H 000699-DEUTZ DW 47- 310 ML
7	04158416	1	cover



Vorderer Deckel
Front cover
Couvercle avant
Tapa delantera



0150-01-503 4273



Section: ENGINE

FASTENINGS

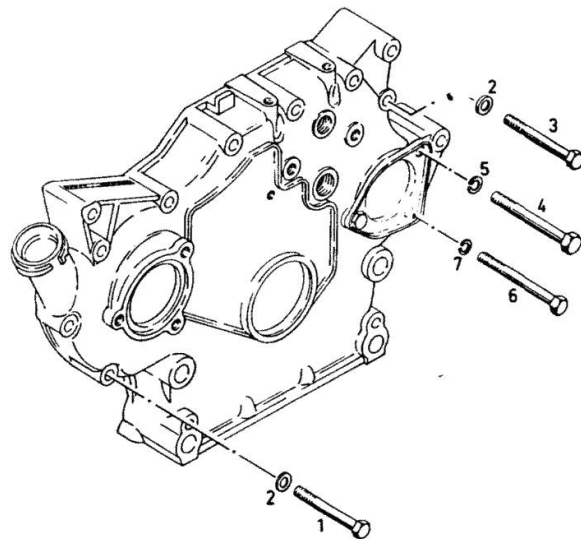
Fig.	P/n	QTY	Name
Notes:			
[DX 4 .10]			
1	01127046	1	screw m 8 x 60 ISO 004017-M 8 X 60 - 8.8-A4C
2	01107101	3	washer 8.4 DIN 000125-A 8,4-140HV-A4C
3	01111179	2	screw m 8 x 70, d931 ISO 004014- M 8 X 70 - 8.8-A4 C
4	01111336	1	screw m 10 x 75 DIN 000931- M10 X 75 - 8.8-A4 C
5	01102800	1	washer 10.2 DIN 000128-A 10 -FST -A4C
6	01122399	1	screw ISO 004014- M 8 X 85 - 8.8-A4 C
7	01102799	1	washer 8, d128 DIN 000128-A 8 -FST -A4C



Befestigungsteile
Fastening parts
Pièces de fixation
Partes de fijación



0150-01-500 6842



Section: ENGINE

BLANKING PARTS

Fig.	P/n	QTY	Name
------	-----	-----	------

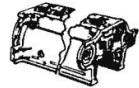
Notes:

[DX 4 .10]

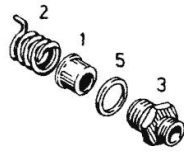
1	02135019	1	tube
2	02237638	1	spring
3	02234350	1	vent
5	01118750	1	oil seal DIN 007603-A 24 X 30 -AL



Verschluss-teile
Locking parts
Pièces de fermeture
Partes de cierre



0150—01—503 0825



Section: ENGINE

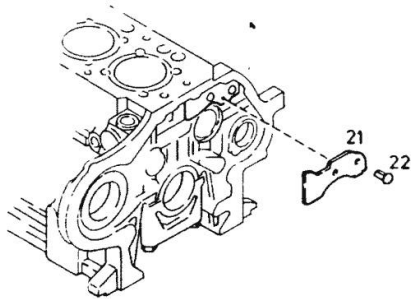
BLANKING PARTS

Fig.	P/n	QTY	Name
Notes: [DX 4 .10]			
21	02231082	1	plate UP TO MOTOR NO. (A) FROM ENGINE NO. SEE ITEM (B)
22	01115333	2	self tapping screw ISO 008746- 6 X10-ST -A4C
950	04156862	1	plate UP TO MOTOR NO. (A) FROM ENGINE NO. SEE ITEM (B)



Verschlußteile
Locking parts
Pieces de fermeture
Partes de cierre

0150—01—504 2845



Thank you so much for reading.
Please click the “Buy Now!”
button below to download the
complete manual.



After you pay.

You can download the most
perfect and complete manual in
the world immediately.

Our support email:

ebooklibonline@outlook.com