

Section: ENGINE

CRANK CASE Motor No. 7 557 403 <<

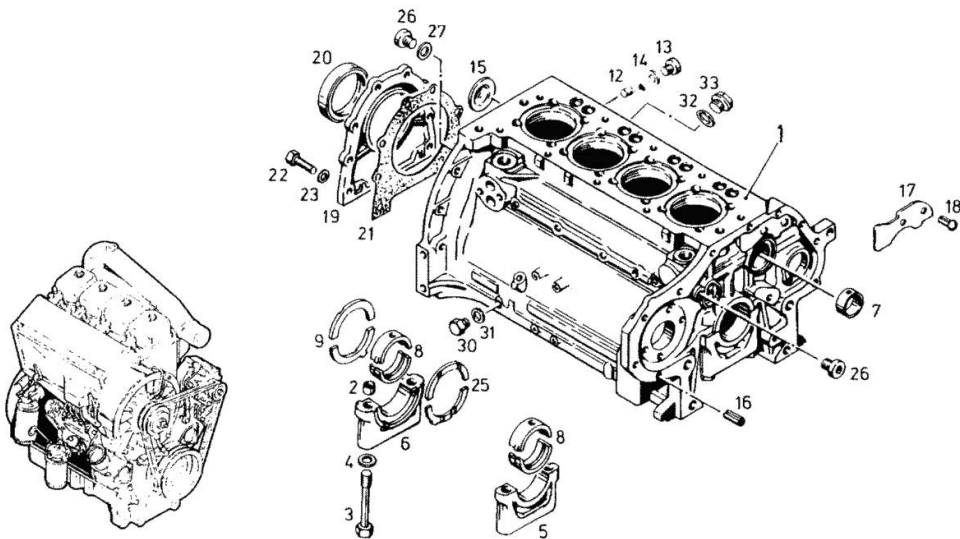
Fig.	P/n	QTY	Name
Notes:			
[DX 4 .50]			
1	02238723	1	crankcase ORDER FROM PICTURE NO. 2 TO 7 12 BIS 18,26,27,30 BIS 33
2	03362279	10	bushing
3	01136990	10	screw DIN 000931-BM14 X110 - 10.9
4	01216107	10	washer 15x23x1,5 H 002308-15 X23X1,5
7	02139737	1	bushing
8	03362379	5	bearing NORMAL 70.00 MM RD(2.7559 IN. UNDERSIZE STEP ITEM 950-955
9	02230181	1	shim NORMAL 3.00 MM (0.1181 IN.)
12	01215235	5	plug
13	01110422	5	screw DIN 000908-M12X1,5-ST
14	01118673	5	oil seal DIN 007603-A 12 X 15,5-CU
15	01216240	1	disc
16	01167266	2	bush H 002341-B11X16
17	02231082	1	plate
18	01115333	2	self tapping screw ISO 008746- 6 X10-ST -A4C
19	02234870	1	cover
20	02234134	1	oil seal
21	03362337	1	gasket
22	01112322	8	screw m 8 p.1.25 x 20 ISO 004017-M 8 X 20 - 8.8-A4C
23	01107101	8	washer 8.4 DIN 000125-A 8,4-140HV-A4C
25	02230170	1	shim
26	04159934	2	screw
27	04159935	1	oil seal
30	01118998	1	screw DIN 007604-CM10X1 -ST-A4C
31	01118659	1	oil seal DIN 007603-A 10 X 13,5-CU
32	01118760	1	gasket 26x31 DIN 007603-A 26 X 31 -CU



Kurbelgehäuse
Crankcase
Carter
Carter

7557 403 ←

0150-01-503.4357



Section: ENGINE

CRANK CASE Motor No. 7 557 403 <<

Kurbelgehäuse
Crankcase
Carter
Carter

7557 403 ←

0150-01-503 4357

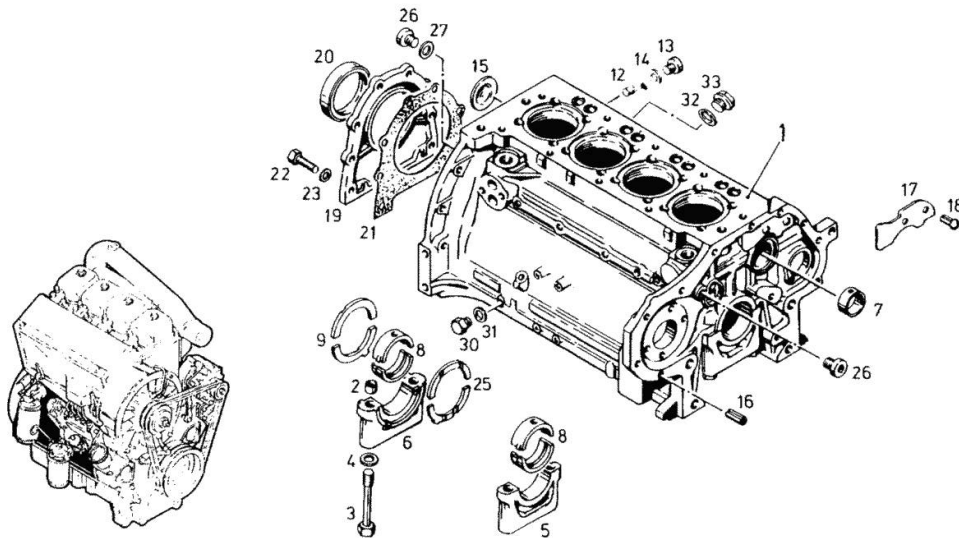


Fig.	P/n	QTY	Name
33	01118986	1	plug am26x1,5 d7604 DIN 007604-AM26X1,5 -ST-ZNPHR F
950	03362380	5	bearing 1.UNDERSIZE STEP 69.75 MMRD (2,7459 IN.)
951	03362381	5	bearing 2.UNDERSIZE STEP 69.50 MMRD (2,7362 IN.)
952	03362382	5	bearing 3.UNDERSIZE STEP 69.25 MMRD (2,7263 IN.)
953	03362383	5	bearing 4.UNDERSIZE STEP 69.00 MMRD (2,7165 IN.)
954	03362384	5	bearing 5.UNDERSIZE STEP 68.75 MMRD (2,7066IN.)
955	03362385	5	bearing 6.UNDERSIZE STEP 68.50 MM RD (2,6968 IN.)
956	02230182	1	shim 1.OVERSIZ STEP 3.25 MM (0,1279 IN.)
957	02230183	1	shim 2.OVERSIZ STEP 3.50 MM (0,1378 IN.)
958	02230184	1	shim 3.OVERSIZ STEP 3.75 MM (0,1476 IN.)
959	02230185	1	shim 4.OVERSIZ STEP 4.00 MM (0,1575 IN.)
960	02230172	1	shim 1.OVERSIZ STEP 3.25 MM (0,1279 IN.)
961	02230173	1	shim 2.OVERSIZ STEP 3.50 MM (0,1378 IN.)
962	02230174	1	shim 3.OVERSIZ STEP 3.75MM (0,1476 IN.)
963	02230175	1	shim 4.OVERSIZ STEP 4.00MM

Section: ENGINE

CRANK CASE Motor No. 7 557 403 <<

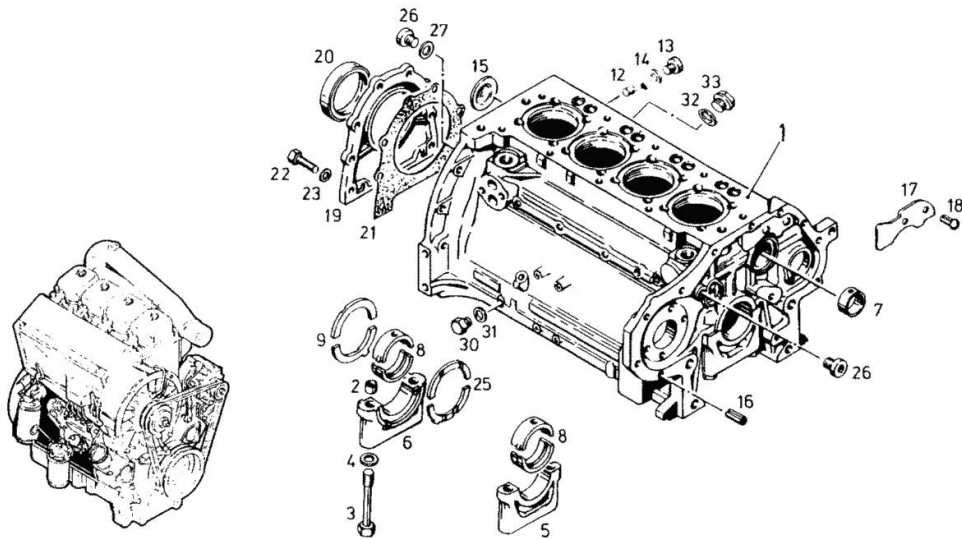
Fig.	P/n	QTY	Name
964	01016120	1	(0,1575 IN.) compound 1 kg H 000699-DEUTZ DW 47- 310 ML



Kurbelgehäuse
Crankcase
Carter
Carter

7557 403 ←

0150-01-503 4357



Section: ENGINE

CRANK CASE

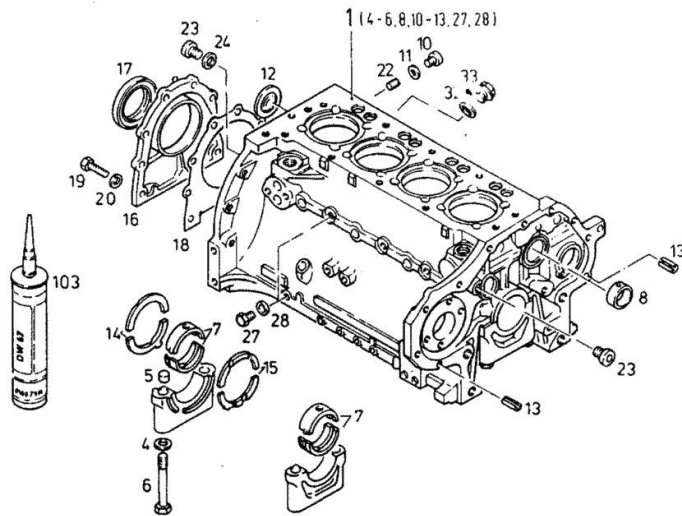
Fig.	P/n	QTY	Name
Notes: [DX 4 .50]			
1	04156252	1	crankcase ORDER FROM PICTURE NO. 4-6,8, 10-13,27,28,32,33.
4	01216107	10	washer 15x23x1,5 H 002308-15 X23X1,5
5	04160764	10	bushing
6	04156058	10	screw
7	03362379	5	bearing UNDERSIZE STEP SEE ITEM 950-955
8	02139737	1	bushing
10	01110422	5	screw DIN 000908-M12X1,5-ST
11	01118673	5	oil seal DIN 007603-A 12 X 15,5-CU
12	01216240	1	disc
13	01167266	2	bush H 002341-B11X16
14	02230181	1	shim OVERSIZE SEE ITEM 956-959
15	02230170	1	shim OVERSIZE SEE ITEM 960-963
16	02234870	1	cover
17	04230392	1	special oil seal
18	03362337	1	gasket
19	01112322	8	screw m 8 p.1.25 x 20 ISO 004017-M 8 X 20 - 8.8-A4C
20	01107101	8	washer 8.4 DIN 000125-A 8,4-140HV-A4C
22	01215235	5	plug
23	04159934	2	screw
24	04159935	1	oil seal
27	01118998	2	screw DIN 007604-CM10X1 -ST-A4C
28	01118659	2	oil seal DIN 007603-A 10 X 13,5-CU
32	01118760	1	gasket 26x31 DIN 007603-A 26 X 31 -CU
33	01118985	1	screw am26x1,5 d7604



Kurbelgehäuse
Crankcase
Carter
Carter

0150 - 01-0506 3047

1

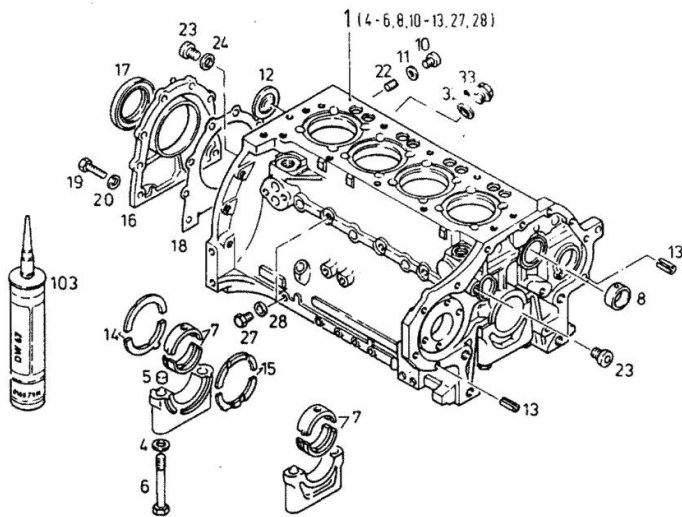




Kurbelgehäuse
Crankcase
Carter
Cárter

0150 - 01-0506 3047

1



Section: ENGINE
CRANK CASE

DX 4 .50

Ref: 11.01.20000

Fig.	P/n	QTY	Name
			DIN 007604-AM26X1,5 -ST-ZNPHR F
103	01016120	1	compound 1 kg
950	03362380	5	H 000699-DEUTZ DW 47- 310 ML bearing
951	03362381	5	1.UNDERSIZE STEP 69.75 MMRD (2,7459 IN.)
952	03362382	5	bearing 2.UNDERSIZE STEP 69.50 MMRD (2,7362 IN.)
953	03362383	5	bearing 3.UNDERSIZE STEP 69.25 MMRD (2,7263 IN.)
954	03362384	5	bearing 4.UNDERSIZE STEP 69.00 MMRD (2,7165 IN.)
955	03362385	5	bearing 5.UNDERSIZE STEP 68.75 MMRD (2,7066IN.)
956	02230182	1	bearing 6.UNDERSIZE STEP 68.50 MM RD (2,6968 IN.)
957	02230183	1	shim 1.OVERSIZE STEP 3.25 MM (0,1279 IN.)
958	02230184	1	shim 2.OVERSIZE STEP 3.50 MM (0,1378 IN.)
959	02230185	1	shim 3.OVERSIZE STEP 3.75 MM (0,1476 IN.)
960	02230172	1	shim 4.OVERSIZE STEP 4.00 MM (0,1575 IN.)
961	02230173	1	shim 1.OVERSIZE STEP 3.25 MM (0,1279 IN.)
962	02230174	1	shim 2.OVERSIZE STEP 3.50 MM (0,1378 IN.)
963	02230175	1	shim 3.OVERSIZE STEP 3.75MM (0,1476 IN.)

Section: ENGINE
CRANK CASE

Fig.	P/n	QTY	Name
------	-----	-----	------

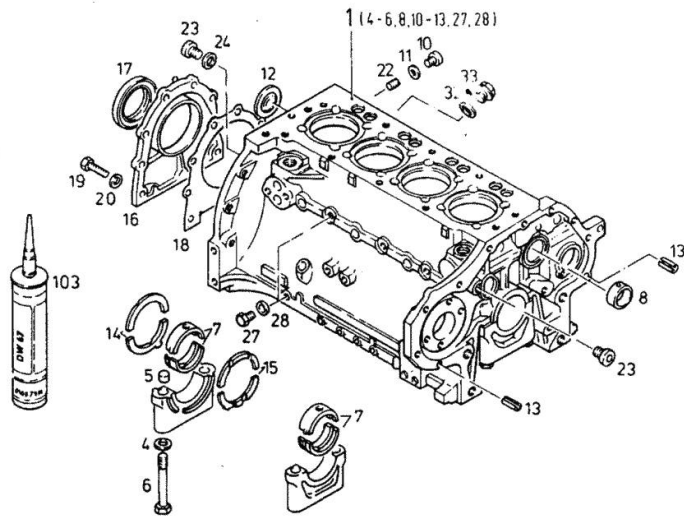
4.OVERSIZE STEP 4.00MM
 (0,1575 IN.)



Kurbelgehäuse
 Crankcase
 Carter
 Cárter

0150 - 01-0506 3047

1



Section: ENGINE

INTERMEDIATE GEAR BEARING

Fig.	P/n	QTY	Name
------	-----	-----	------

Notes:

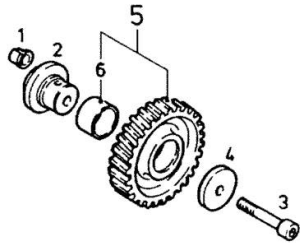
[DX 4 .50]

1	02101007	1	bushing
2	04161357	1	pin
3	02234177	1	screw
4	04154593	1	washer
5	04154591	1	gear wheel
6	02234389	1	bushing



Zwischenradlagerung
 Idler gear bearing
 Tourillon de pignon intermédiaire
 Soporte para rueda intermedia

0150—01—504 2810



Section: ENGINE

FRONT COVER

Fig.	P/n	QTY	Name
------	-----	-----	------

Notes:

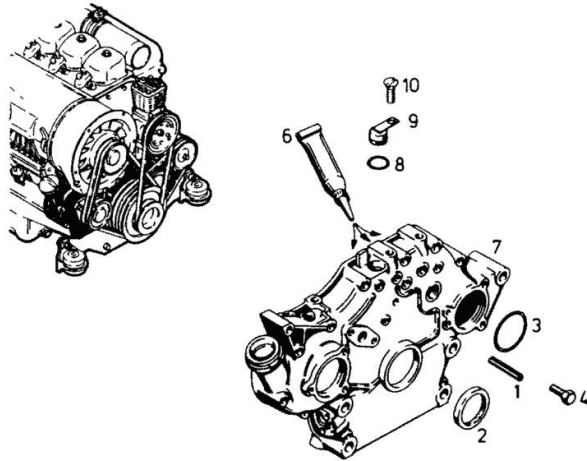
[DX 4 .50]

1	01115459	1	pin ISO 008752- 6 X 45
2	02234133	1	oil seal
3	01171243	1	oil seal H 002927- 82 X 3,15 -MVQ-1-50
4	01102396	1	screw ISO 004017-M 8 X 8 - 8.8-A4C
6	01016120	1	compound 1 kg H 000699-DEUTZ DW 47- 310 ML
7	04158444	1	cover
8	01160480	1	oil seal H 002927- 24 X 3 -FPM-1-70
9	02239634	1	bottom
10	01132357	1	screw ISO 002009- M 8 X 16- 4.8 -A4 C



Vorderer Deckel
Front cover
Couvercle avant
Tapa delantera

0150-01-503 7682



Section: ENGINE

FASTENINGS

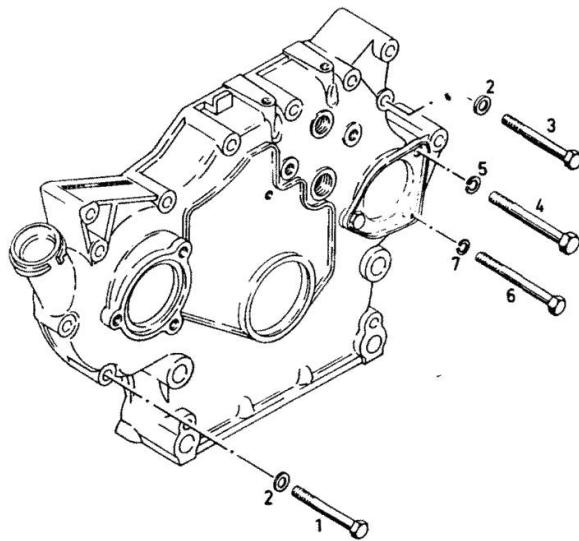
Fig.	P/n	QTY	Name
Notes:			
[DX 4 .50]			
1	01127046	1	screw m 8 x 60 ISO 004017-M 8 X 60 - 8.8-A4C
2	01107101	3	washer 8.4 DIN 000125-A 8,4-140HV-A4C
3	01111179	2	screw m 8 x 70, d931 ISO 004014- M 8 X 70 - 8.8-A4 C
4	01111336	1	screw m 10 x 75 DIN 000931- M10 X 75 - 8.8-A4 C
5	01102800	1	washer 10.2 DIN 000128-A 10 -FST -A4C
6	01122399	1	screw ISO 004014- M 8 X 85 - 8.8-A4 C
7	01102799	1	washer 8, d128 DIN 000128-A 8 -FST -A4C



Befestigungsteile
Fastening parts
Pièces de fixation
Partes de fijación



0150-01-500 6842



Section: ENGINE

BLANKING PARTS

Fig.	P/n	QTY	Name
------	-----	-----	------

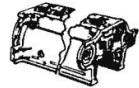
Notes:

[DX 4 .50]

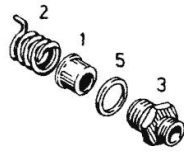
1	02135019	1	tube
2	02237638	1	spring
3	02234350	1	vent
5	01118750	1	oil seal DIN 007603-A 24 X 30 -AL



Verschluss-teile
Locking parts
Pièces de fermeture
Partes de cierre



0150-01-503 0825



Section: ENGINE

BLANKING PARTS

Fig.	P/n	QTY	Name
------	-----	-----	------

Notes:

[DX 4 .50]

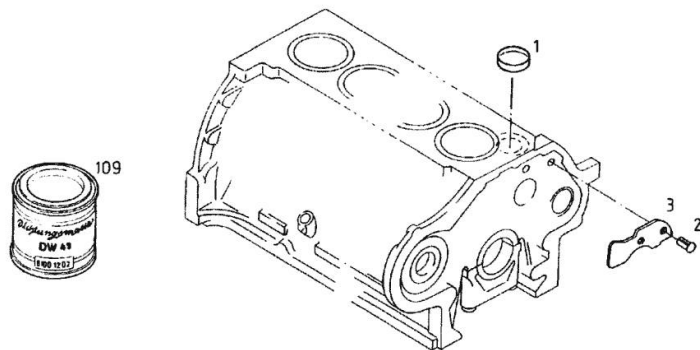
1	01176197	1	stop H 000711-B25,8
2	01115333	2	self tapping screw ISO 008746- 6 X10-ST -A4C
3	04156862	1	plate
109	01001202	1	gasket H 000699-DEUTZ DW 49- 1 KG



Verschluss­teile
Locking parts
Pièces de fermeture
Partes de cierre

0150-01-0504 2879

1



Thank you so much for reading.
Please click the “Buy Now!”
button below to download the
complete manual.



After you pay.

You can download the most
perfect and complete manual in
the world immediately.

Our support email:

ebooklibonline@outlook.com