

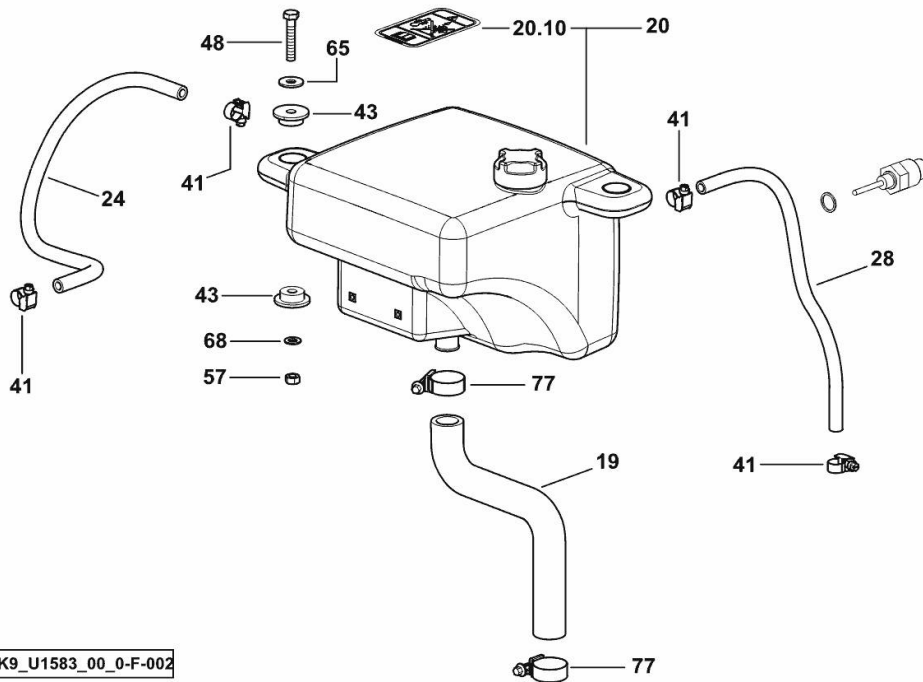
COOLING - EXPANSION TANK

| Fig. | P/n | QTY | Name |
|------|-----|-----|------|
|------|-----|-----|------|

Notes:

[FORTIS 150 ->WSXAS00200LS50010]

| | | | |
|-------|-----------------|----|---------------------------------|
| 19 | 0.019.7070.0/10 | 1 | tube |
| 20 | 0.018.5486.4/30 | 1 | small tank ☞ 0.018.5486.4/30 |
| 20.10 | 2.9939.280.0 | 1 | plate |
| 24 | 0.012.6457.0 | 1 | tube |
| 28 | 0.012.6457.0 | 1 | tube |
| 41 | 01173965 | 4 | clamp 10-16/9 h3461 |
| 43 | 04432147 | 4 | ring |
| 48 | 2.0112.217.2 | 2 | screw m 8 p.1.25 x 45 |
| 57 | 2.1011.105.2 | 10 | nut m 8 p.1.25 |
| 65 | 2.1312.004.2 | 3 | washer 8x24x2 |
| 68 | 2.1475.002.2 | 2 | conical washer 8 |
| 77 | 2.6851.003.0 | 2 | clamp Ø 25/40 |



K9_U1583_00_0-F-002

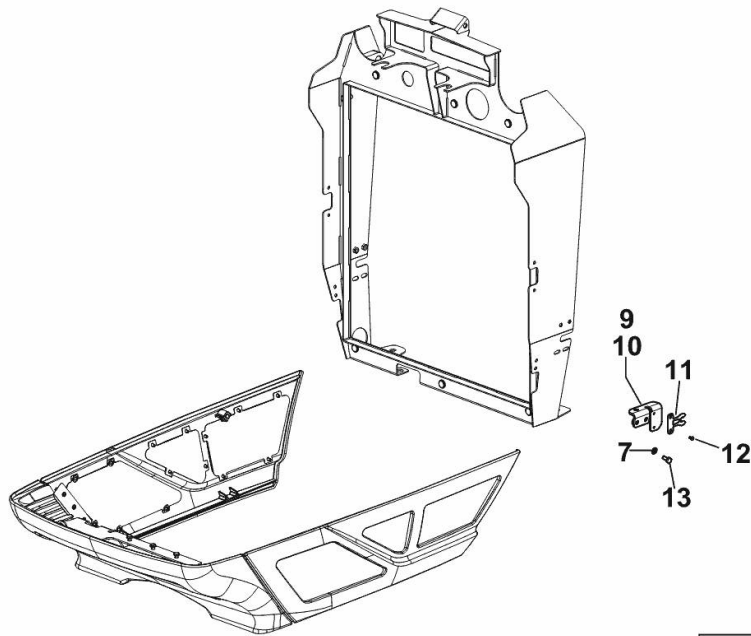
HOOD SIDE PANEL SX/LH/LI - DX/RH/RE

| Fig. | P/n | QTY | Name |
|------|-----|-----|------|
|------|-----|-----|------|

Notes:

[FORTIS 150 ->WSXAS00200LS50010] -> 50015

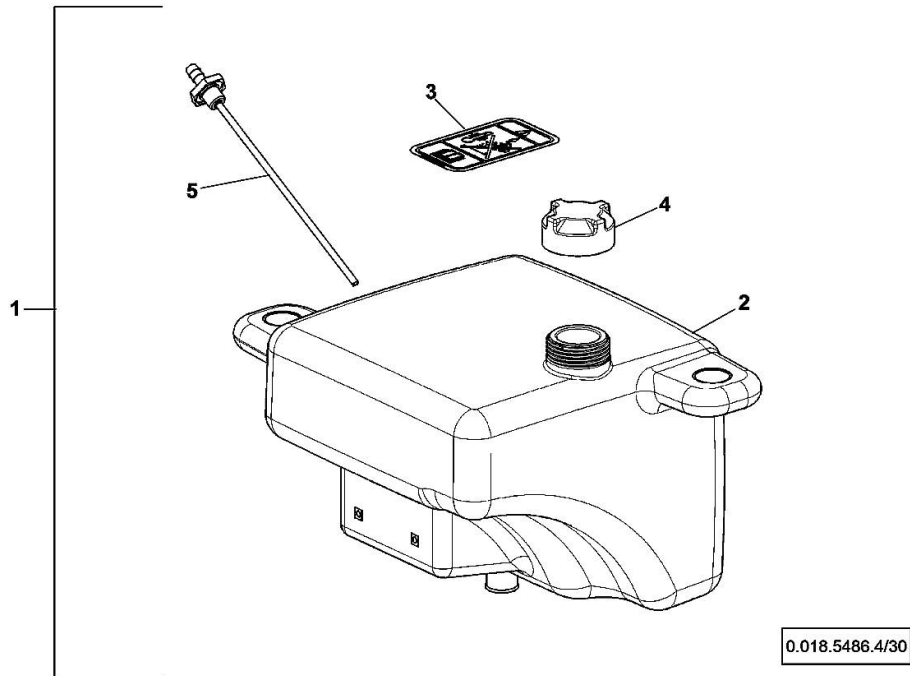
| | | | |
|----|-----------------|----|----------------------|
| 7 | 2.1310.002.2 | 15 | flat washer 6.4x12.5 |
| 9 | 0.019.0244.3/10 | 1 | bracket dx/rh/re |
| 10 | 0.019.0245.3/10 | 1 | bracket sx/lh/li |
| 11 | 0.017.6361.0/30 | 2 | stop |
| 12 | 04414182 | 4 | rivet 4.8 |
| 13 | 2.0112.004.2 | 4 | screw m 6 p.1 x 14 |



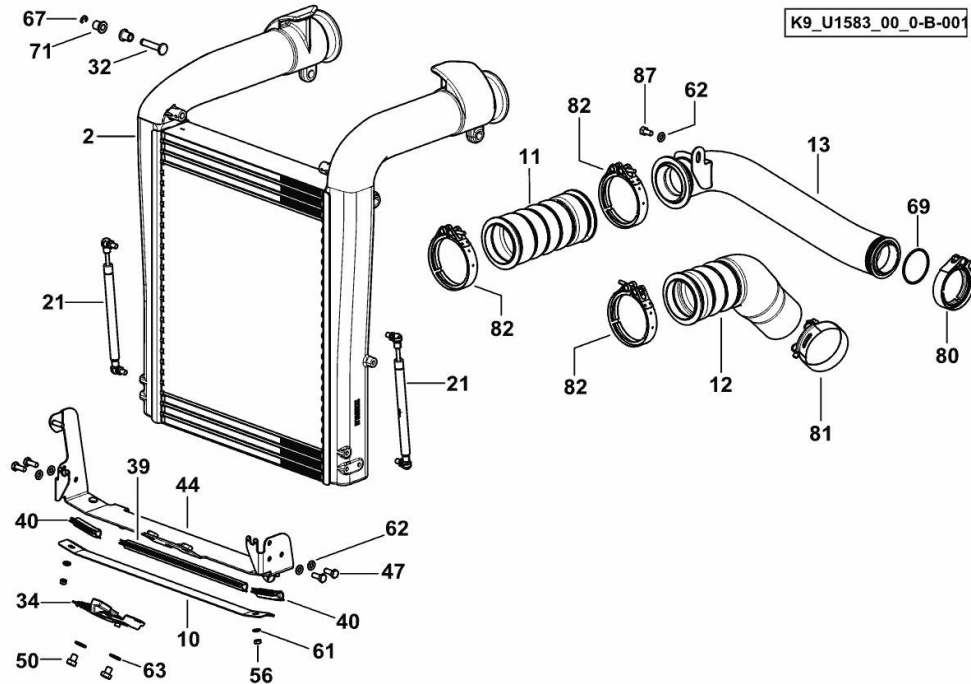
K9_U1672_06_0-B-001

WATER TANK

| Fig. | P/n | QTY | Name |
|------|-----------------|-----|--------------------|
| 1 | 0.018.5486.4/30 | 1 | small tank |
| 2 | 0.000.0000.1 | | cannot be supplied |
| 3 | 2.9939.280.0 | 1 | plate |
| 4 | 0.010.3465.1 | 1 | plug |
| 5 | 0.020.1742.3/10 | 1 | tube |



INTERCOOLER



| Fig. | P/n | QTY | Name |
|------|-----|-----|------|
|------|-----|-----|------|

Notes:

[FORTIS 150 ->WSXAS00200LS50010]

| | | | |
|----|-----------------|----|-----------------------|
| 2 | 0.021.2353.4 | 1 | intercooler |
| 10 | 0.019.0632.0/10 | 1 | bracket |
| 11 | 0.019.0603.4 | 1 | sleeve |
| 12 | 0.019.0594.4 | 1 | sleeve |
| 13 | 0.019.0617.2/10 | 1 | tube |
| 21 | 0.018.8024.4 | 2 | shock absorber |
| 32 | 0.017.4798.0 | 2 | pin |
| 34 | 0.013.3609.4 | 1 | lock |
| 39 | 0.019.0633.0 | 1 | gasket |
| 40 | 0.019.0634.0 | 2 | gasket |
| 44 | 0.019.0098.3/20 | 1 | support |
| 47 | 2.0112.207.2 | 4 | screw m 8 p 1.25 x 20 |
| 50 | 2.0112.303.2 | 2 | screw m 10 p.1.5x12 |
| 56 | 2.1011.103.2 | 4 | nut m 6 p.1 |
| 61 | 2.1310.002.2 | 7 | flat washer 6.4x12.5 |
| 62 | 2.1310.004.2 | 13 | flat washer 8.4x17 |
| 63 | 2.1310.006.2 | 6 | flat washer 10.5x21 |
| 67 | 2.1430.009.2 | 2 | ring 8 |
| 69 | 2.1532.143.0 | 1 | oil seal |
| 71 | 2.1559.147.0 | 4 | bushing |
| 80 | 2.6859.118.0 | 1 | clamp Ø 77 |
| 81 | 2.6859.148.2 | 1 | clamp Ø 79-85 |
| 82 | 2.6859.166.0 | 3 | clamp Ø 97 |
| 87 | 2.0112.205.2 | 1 | screw m 8 p.1.25 x 16 |

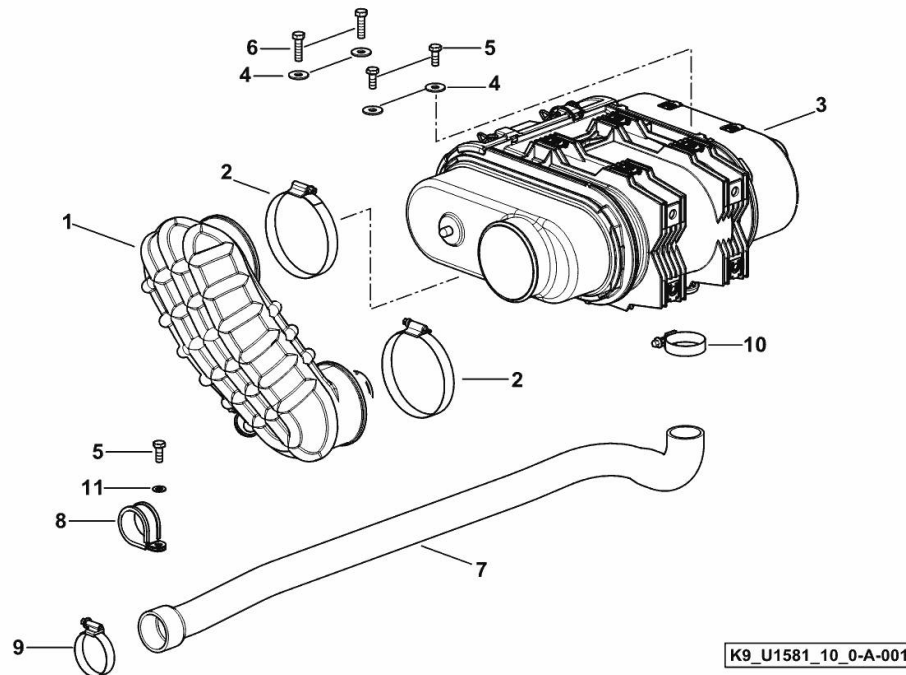
AIR CLEANER 9"

| Fig. | P/n | QTY | Name |
|------|-----|-----|------|
|------|-----|-----|------|

Notes:

[FORTIS 150 ->WSXAS00200LS50010]

| | | | |
|----|-----------------|---|--|
| 1 | 0.018.4515.4/10 | 1 | sleeve |
| 2 | 2.6859.150.0 | 2 | clamp 95/118 |
| 3 | 2.4249.731.0/20 | 1 | air filter (-> 50010) ☞ 2.4249.731.0/20 |
| 4 | 2.1312.004.2 | 4 | washer 8x24x2 |
| 5 | 2.0112.207.2 | 4 | screw m 8 p 1.25 x 20 |
| 6 | 2.0112.211.2 | 2 | screw m 8 p.1.25 x 30 |
| 7 | 0.019.0627.0/10 | 1 | tube |
| 8 | 2.6839.069.0 | 2 | clamp 40/20 |
| 9 | 2.6851.005.0 | 1 | clamp Ø 40/60 |
| 10 | 2.6851.004.0 | 1 | clamp Ø 32/50 |
| 11 | 2.1310.004.2 | 2 | flat washer 8.4x17 |



K9_U1581_10_0-A-001

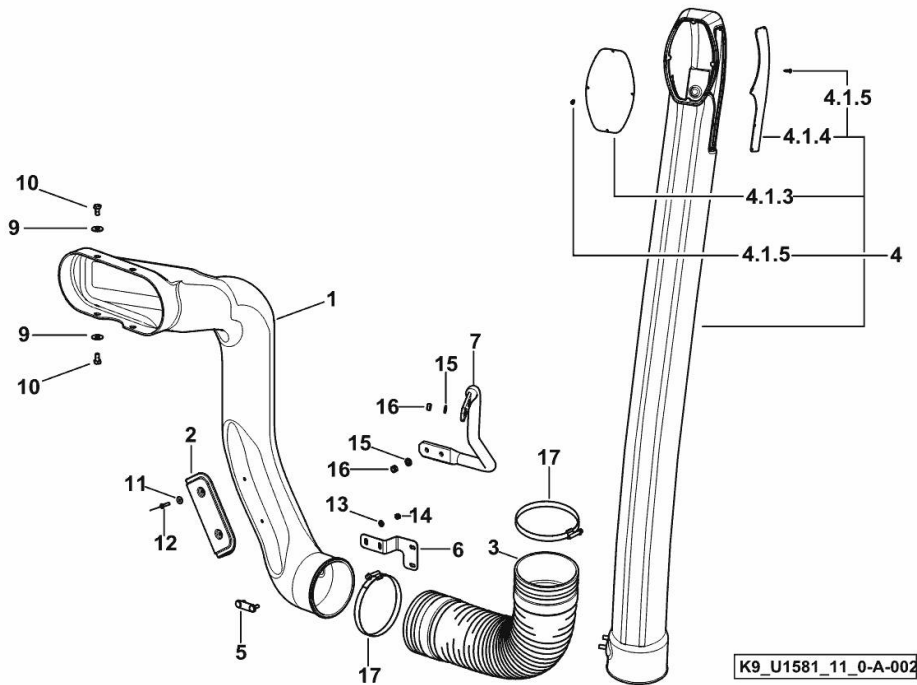
ENGINE AIR INTAKE PIPE

| Fig. | P/n | QTY | Name |
|------|-----|-----|------|
|------|-----|-----|------|

Notes:

[FORTIS 150 ->WSXAS00200LS50010]

| | | | |
|-------|-----------------|----|-----------------------|
| 1 | 0.018.1449.0/30 | 1 | sleeve |
| 2 | 0.018.1794.0 | 1 | shield |
| 3 | 0.015.7527.0 | 1 | tube |
| 4 | 04431291.4 | 1 | tube |
| 4.1.3 | 04434787 | 1 | plate |
| 4.1.4 | 04434788 | 1 | plate |
| 4.1.5 | 04423627 | 13 | stop |
| 5 | 0.017.8380.3 | 1 | small plate |
| 6 | 0.017.8369.0/20 | 1 | bracket |
| 7 | 04453928 | 1 | support |
| 9 | 2.1312.004.2 | 4 | washer 8x24x2 |
| 10 | 2.0112.205.2 | 4 | screw m 8 p.1.25 x 16 |
| 11 | 2.1312.002.2 | 2 | washer 5 |
| 12 | 2.1851.005.0 | 2 | rivet 4.8 |
| 13 | 2.1310.002.2 | 2 | flat washer 6.4x12.5 |
| 14 | 2.1011.103.2 | 2 | nut m 6 p.1 |
| 15 | 2.1310.004.2 | 4 | flat washer 8.4x17 |
| 16 | 2.1011.105.2 | 4 | nut m 8 p.1.25 |
| 17 | 2.6851.013.0 | 2 | clamp 120-140 |



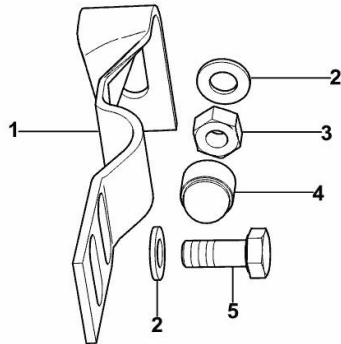
ENGINE AIR INTAKE PIPE BRACKET

| Fig. | P/n | QTY | Name |
|------|-----|-----|------|
|------|-----|-----|------|

Notes:

[FORTIS 150 ->WSXAS00200LS50010]

| | | | |
|---|--------------|---|-----------------------|
| 1 | 04413465 | 1 | bracket |
| 2 | 2.1310.004.2 | 2 | flat washer 8.4x17 |
| 3 | 2.1011.105.2 | 1 | nut m 8 p.1.25 |
| 4 | 01174042 | 1 | cap |
| 5 | 2.0114.207.2 | 1 | screw m 8 p.1.25 x 20 |



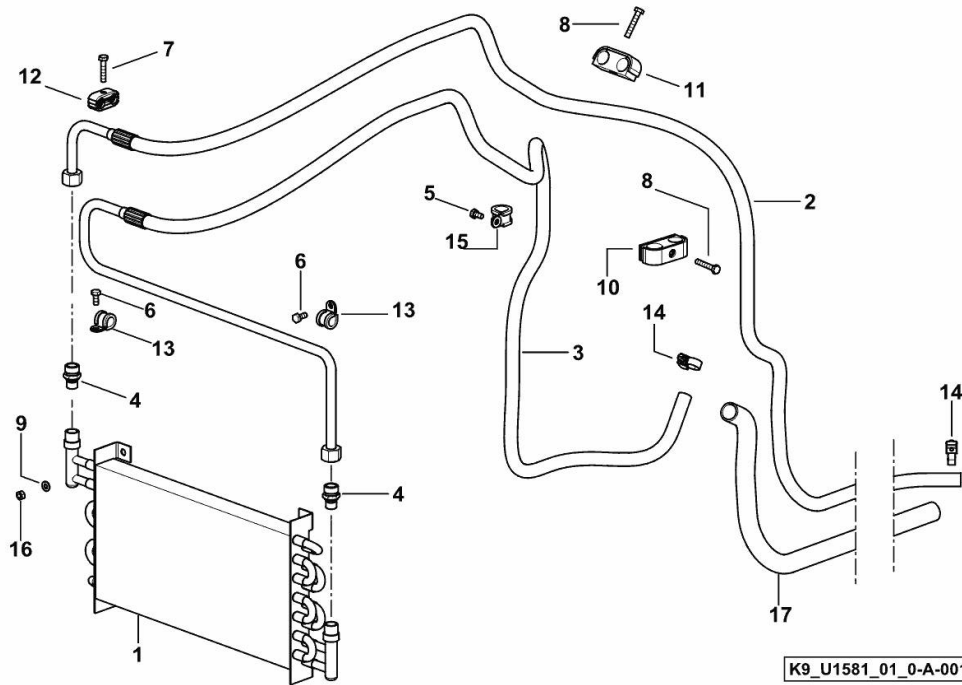
K9_U1581_12_0-A-001

FUEL COOLER

| Fig. | P/n | QTY | Name |
|------|-----|-----|------|
|------|-----|-----|------|

Notes:

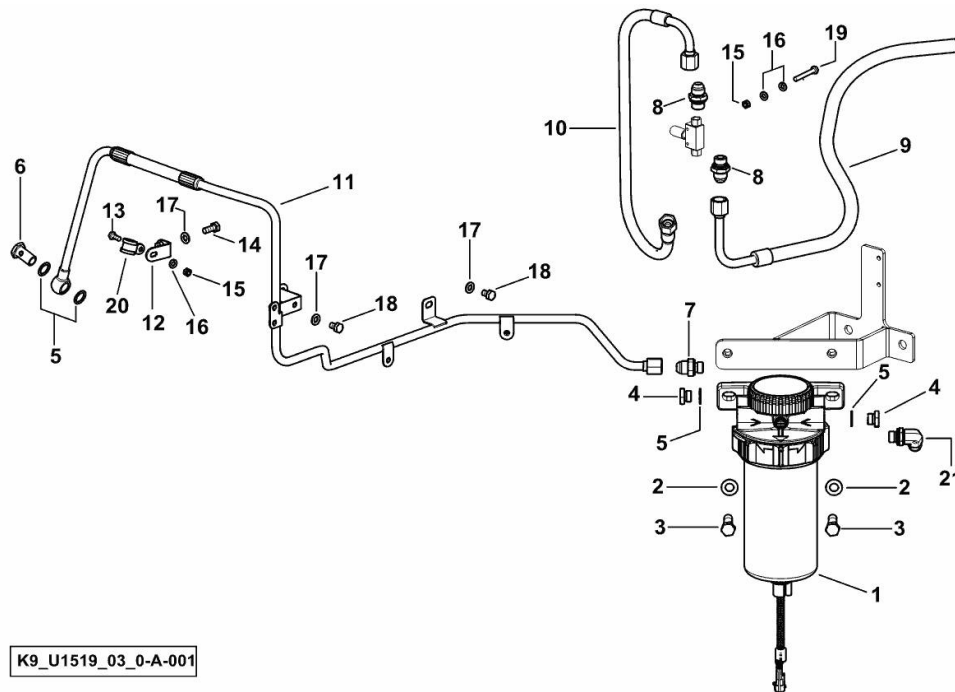
[FORTIS 150 ->WSXAS00200LS50010]



| | | | |
|----|--------------|---|--------------------------|
| 1 | 0.018.8033.4 | 1 | radiator |
| 2 | 0.019.0278.3 | 1 | tube |
| 3 | 0.019.0279.3 | 1 | tube |
| 4 | 04453868 | 2 | pipe fitting m 14 p.1.5 |
| 5 | 2.0112.003.2 | 1 | screw m 6 p.1 x 12 |
| 6 | 2.0112.004.2 | 2 | screw m 6 p.1 x 14 |
| 7 | 2.0112.011.2 | 1 | screw m 6 p.1x30 |
| 8 | 2.0112.013.2 | 2 | screw m 6 p.1 x 35 |
| 9 | 2.1310.002.2 | 4 | flat washer 6.4x12.5 |
| 10 | 2.3320.220.0 | 1 | terminal Ø 18/20 - typ A |
| 11 | 2.3320.319.0 | 1 | terminal |
| 12 | 2.3321.010.0 | 1 | collar Ø 12/12 |
| 13 | 2.6839.059.0 | 2 | clamp Ø 12 / 15 |
| 14 | 2.6851.019.0 | 2 | clamp Ø 13/20 |
| 15 | 2.6839.053.0 | 1 | clamp Ø 17/15 |
| 16 | 2.1011.103.2 | 4 | nut m 6 p.1 |
| 17 | 0.016.7110.0 | 1 | sheath mm 2317 |

K9_U1581_01_0-A-001

FUEL FEED PIPES AND PREFILTER



| Fig. | P/n | QTY | Name |
|------|-----|-----|------|
|------|-----|-----|------|

Notes:

[FORTIS 150 ->WSXAS00200LS50010]

| | | | |
|----|-----------------|---|---------------------------------|
| 1 | 2.4319.300.0/20 | 1 | precleaner ☞ 2.4319.300.0/20 |
| 2 | 2.1310.007.2 | 2 | flat washer 13 x 24 |
| 3 | 2.0114.415.2 | 2 | screw m 12 p.1.75 x 40 |
| 4 | 2.3110.404.2 | 2 | plug m 16 p.1.5 |
| 5 | 2.1560.012.0 | 4 | gasket 16.2 x 22 |
| 6 | 2.3335.007.2 | 1 | pipe union m 16 p.1.5x28 |
| 7 | 2.3249.227.2 | 1 | pipe fitting m 16 p.1.5-3/4" |
| 8 | 2.3249.138.2 | 2 | pipe fitting m 18 - 3/4" JIC |
| 9 | 0.015.9527.3/10 | 1 | pipng |
| 10 | 0.015.9526.3 | 1 | pipng |
| 11 | 0.018.9697.3/10 | 1 | tube |
| 12 | 0.017.5170.3 | 1 | bracket |
| 13 | 2.0112.005.2 | 1 | screw m 6 p.1 x 16 |
| 14 | 2.0112.207.2 | 1 | screw m 8 p 1.25 x 20 |
| 15 | 2.1011.103.2 | 3 | nut m 6 p.1 |
| 16 | 2.1310.002.2 | 5 | flat washer 6.4x12.5 |
| 17 | 2.1310.004.2 | 3 | flat washer 8.4x17 |
| 18 | 2.0112.203.2 | 2 | screw m 8 p.1.25 x 12 |
| 19 | 2.0112.017.2 | 2 | screw m 6 p.1x45 |
| 20 | 2.6839.059.0 | 1 | clamp Ø 12 / 15 |
| 21 | 2.3249.101.2 | 1 | pipe fitting m 16 p1.5 |

K9_U1519_03_0-A-001

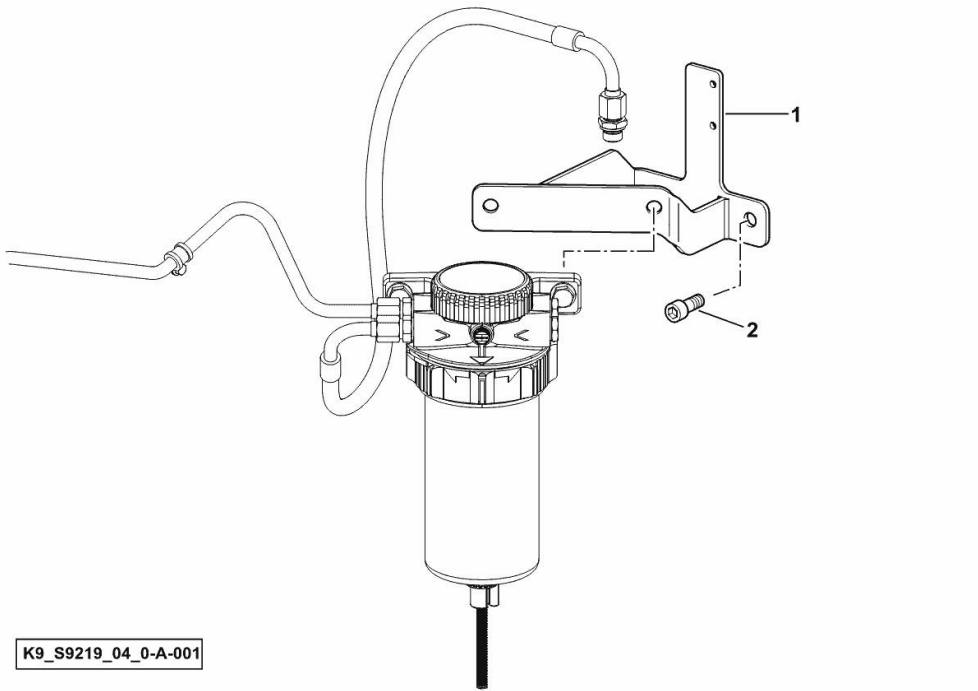
FUEL PRE-FILTER SUPPORT

| Fig. | P/n | QTY | Name |
|------|-----|-----|------|
|------|-----|-----|------|

Notes:

[FORTIS 150 ->WSXAS00200LS50010]

| | | | |
|---|-----------------|---|------------------------|
| 1 | 0.017.6497.3/20 | 1 | support |
| 2 | 2.0312.410.2 | 2 | screw m 12 p.1.75 x 30 |



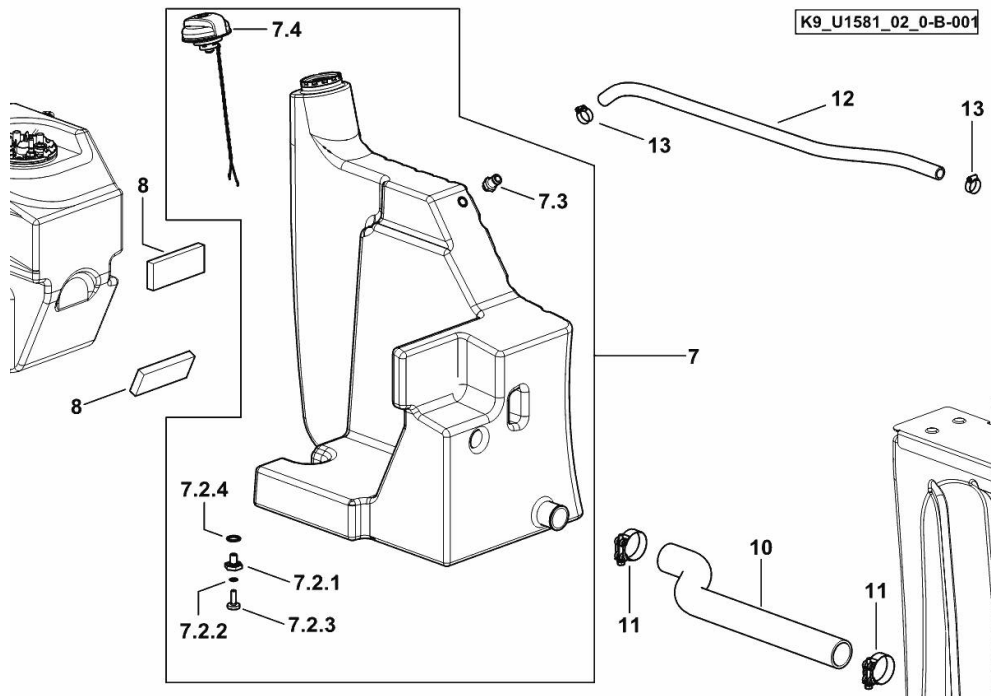
FUEL TANK DX/RH/RE

| Fig. | P/n | QTY | Name |
|------|-----|-----|------|
|------|-----|-----|------|

Notes:

[FORTIS 150 ->WSXAS00200LS50010]

| | | | |
|-------|-----------------|---|-------------------------------|
| 7 | 0.018.2154.4/50 | 1 | fuel tank dx/rh/re |
| 7.2.1 | 0.016.9607.0 | 1 | plug m10 |
| 7.2.2 | 2.1560.006.0 | 1 | gasket 10.2 x 16 |
| 7.2.3 | 0.016.9605.0 | 1 | plug m14 |
| 7.2.4 | 2.1539.040.0 | 1 | special oil seal 21.82 x 3.53 |
| 7.3 | 2.3249.245.0 | 1 | pipe fitting Ø 12 / 3/8" GAS |
| 7.4 | 0.019.6285.4 | 1 | plug (-> 50010) |
| 8 | 0.015.7103.0 | 2 | gasket 60x150x18 |
| 10 | 0.018.3886.0/10 | 1 | tube |
| 11 | 2.6859.155.0 | 2 | clamp Ø 59/63 |
| 12 | 0.019.9244.0 | 1 | tube |
| 13 | 01173962 | 2 | clamp Ø 20/32 |

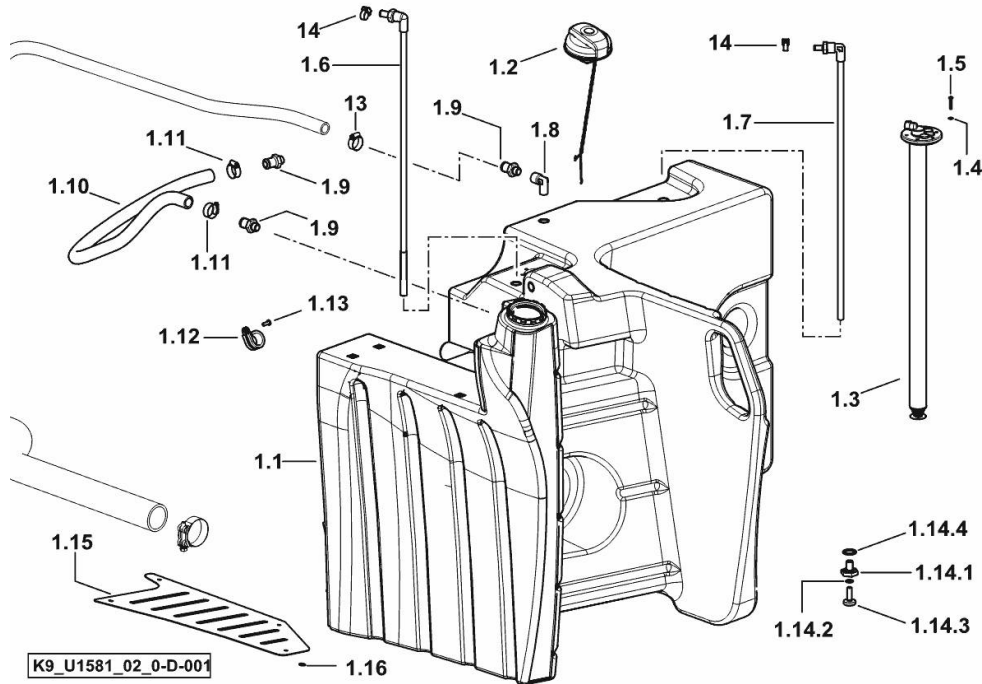


FUEL TANK SX/LH/LI

| Fig. | P/n | QTY | Name |
|------|-----|-----|------|
|------|-----|-----|------|

Notes:

[FORTIS 150 ->WSXAS00200LS50010]



| | | | |
|--------|-----------------|---|-------------------------------|
| 1.1 | 0.018.6779.3/40 | 1 | fuel tank sx/lh/li |
| 1.2 | 0.019.6285.4 | 1 | plug (-> 50010) |
| 1.3 | 2.7059.016.0 | 1 | float |
| 1.4 | 2.1310.028.2 | 6 | flat washer |
| 1.5 | 2.0332.208.2 | 6 | screw m4x25 |
| 1.6 | 0.016.7111.3/20 | 1 | tube |
| 1.7 | 0.016.7518.3/10 | 1 | tube |
| 1.8 | 2.3249.224.0 | 1 | pipe fitting Ø 22 / 3/8" GAS |
| 1.9 | 2.3249.245.0 | 3 | pipe fitting Ø 12 / 3/8" GAS |
| 1.10 | 0.018.8394.0/10 | 1 | tube |
| 1.11 | 01173962 | 2 | clamp Ø 20/32 |
| 1.12 | 2.6839.068.0 | 1 | clamp Ø 27 |
| 1.13 | 2.0332.406.2 | 5 | screw m 6 p.1.0 x 16 |
| 1.14.1 | 0.016.9607.0 | 1 | plug m10 |
| 1.14.2 | 2.1560.006.0 | 1 | gasket 10.2 x 16 |
| 1.14.3 | 0.016.9605.0 | 1 | plug m14 |
| 1.14.4 | 2.1539.040.0 | 1 | special oil seal 21.82 x 3.53 |
| 1.15 | 0.018.7319.0/20 | 1 | guard |
| 1.16 | 2.1310.002.2 | 4 | flat washer 6.4x12.5 |
| 13 | 01173962 | 2 | clamp Ø 20/32 |
| 14 | 2.6851.019.0 | 2 | clamp Ø 13/20 |

Thank you so much for reading.
Please click the “Buy Now!”
button below to download the
complete manual.



After you pay.

You can download the most
perfect and complete manual in
the world immediately.

Our support email:

ebooklibonline@outlook.com