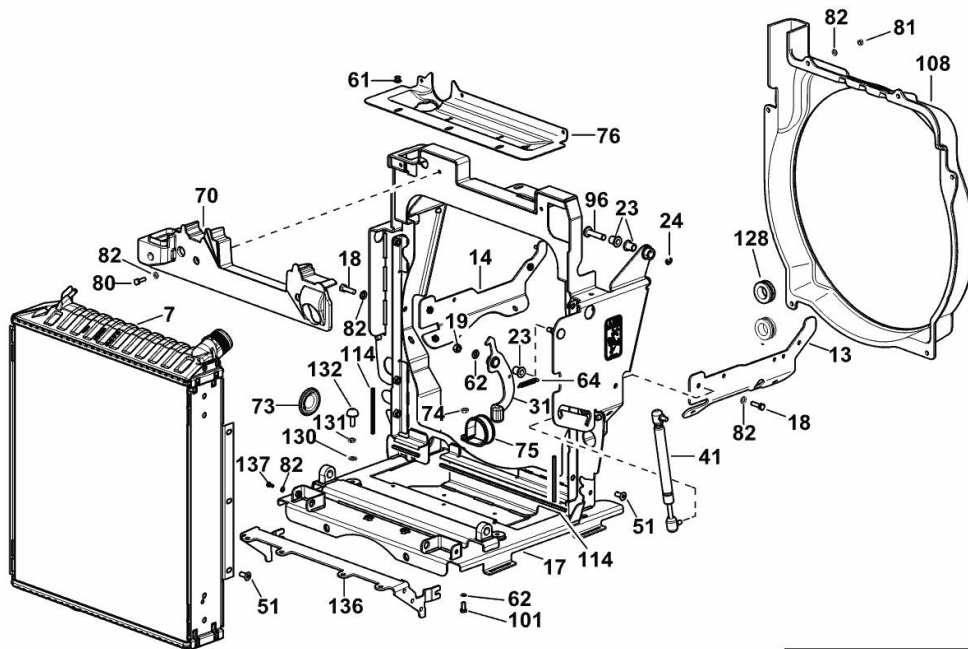


**COOLING SYSTEM**



K9\_V7983\_00\_0-E-006

| Fig. | P/n | QTY | Name |
|------|-----|-----|------|
|------|-----|-----|------|

**Notes:**

[FORTIS 160.4 -> WSXAP00200LS50010]

|     |                 |     |                          |
|-----|-----------------|-----|--------------------------|
| 7   | 0.019.7413.4    | 1   | water cooler             |
| 13  | 0.017.6647.3/30 | 1   | bracket sx/lh/li         |
| 14  | 0.017.6648.3/30 | 1   | bracket dx/rh/re         |
| 17  | 0.020.1484.3/20 | 1   | duct                     |
| 18  | 2.0114.005.2    | 4   | screw m 6 p.1.0 x 16     |
| 19  | 2.1011.005.2    | 1   | nut m 8 p.1.25           |
| 23  | 2.1559.147.0    | 5   | bushing                  |
| 24  | 2.1430.009.2    | 2   | ring 8                   |
| 31  | 0.017.8393.2/10 | 1   | small lever              |
| 41  | 0.014.4516.0    | 1   | shock absorber           |
| 51  | 2.0342.305.3    | 6   | screw m 8 x 20           |
| 61  | 2.1851.004.0    | 6   | rivet 4.8                |
| 62  | 2.1310.004.2    | 11  | flat washer 8.4x17       |
| 64  | 2.4049.230.2    | 1   | spring                   |
| 70  | 0.021.2531.4    | 1   | gasket                   |
| 73  | 2.3199.006.0    | 1   | plug 45                  |
| 74  | 2.1011.505.2    | 1   | nut m 8 p.1              |
| 75  | 2.6839.063.0    | 1   | clamp Ø 50               |
| 76  | 0.016.1220.0/10 | 1   | cup                      |
| 80  | 2.0112.007.2    | 3   | screw m 6 p.1 x 20       |
| 81  | 2.1011.103.2    | 9   | nut m 6 p.1              |
| 82  | 2.1310.002.2    | 18  | flat washer 6.4x12.5     |
| 96  | 0.014.4027.0    | 2   | pin                      |
| 101 | 2.0112.207.2    | 1   | screw m 8 p 1.25 x 20    |
| 108 | 0.019.3993.0/30 | 1   | duct                     |
| 114 | 01393059        | 0.9 | gasket                   |
| 128 | 2.6560.021.0    | 2   | wire guide 25x5x33x42h15 |
| 130 | 2.1470.004.2    | 2   | lock washer 8            |
| 131 | 2.1011.205.2    | 2   | nut m 8 p.1.25           |
| 132 | 04384850        | 2   | contact surface m 8 x 25 |
| 136 | 0.021.1191.3    | 1   | chassis frame            |
| 137 | 2.0112.005.2    | 2   | screw m 6 p.1 x 16       |

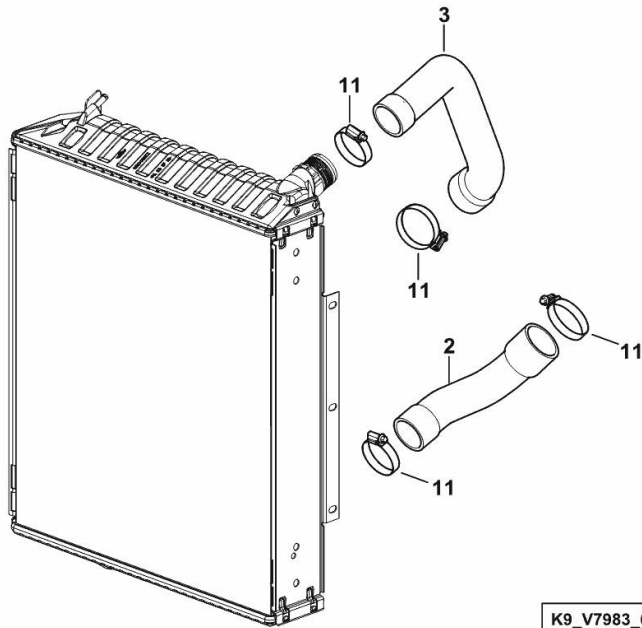
**RADIATOR HOSES**

| Fig. | P/n | QTY | Name |
|------|-----|-----|------|
|------|-----|-----|------|

**Notes:**

[FORTIS 160.4 -> WSXAP00200LS50010]

|    |                 |   |               |
|----|-----------------|---|---------------|
| 2  | 0.016.9278.0/10 | 1 | tube          |
| 3  | 0.018.2086.0/10 | 1 | tube          |
| 11 | 2.6859.157.0    | 4 | clamp Ø 40/60 |



K9\_V7983\_03\_0-B-001

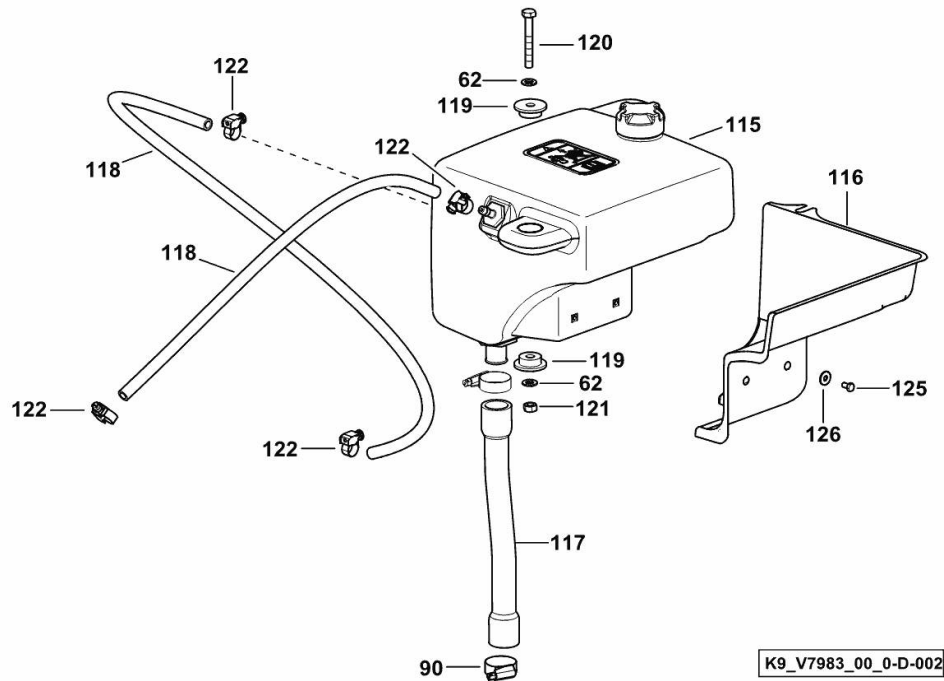
**COOLING - EXPANSION TANK**

| Fig. | P/n | QTY | Name |
|------|-----|-----|------|
|------|-----|-----|------|

**Notes:**

[FORTIS 160.4 -> WSXAP00200LS50010]

|     |                 |    |                                 |
|-----|-----------------|----|---------------------------------|
| 62  | 2.1310.004.2    | 11 | flat washer 8.4x17              |
| 90  | 2.6851.003.0    | 3  | clamp Ø 25/40                   |
| 115 | 0.018.5486.4/30 | 1  | small tank<br>☞ 0.018.5486.4/30 |
| 116 | 0.019.6579.0    | 1  | insulator                       |
| 117 | 0.019.6328.0/10 | 1  | tube                            |
| 118 | 0.012.6457.0    | 2  | tube                            |
| 119 | 04432147        | 4  | ring                            |
| 120 | 2.0112.221.2    | 2  | screw m 8 p.1.25 x 60           |
| 121 | 2.1011.105.2    | 2  | nut m 8 p.1.25                  |
| 122 | 01173965        | 4  | clamp 10-16/9 h3461             |
| 125 | 2.0114.102.2    | 2  | screw m 5x10                    |
| 126 | 2.1312.002.2    | 2  | washer 5                        |



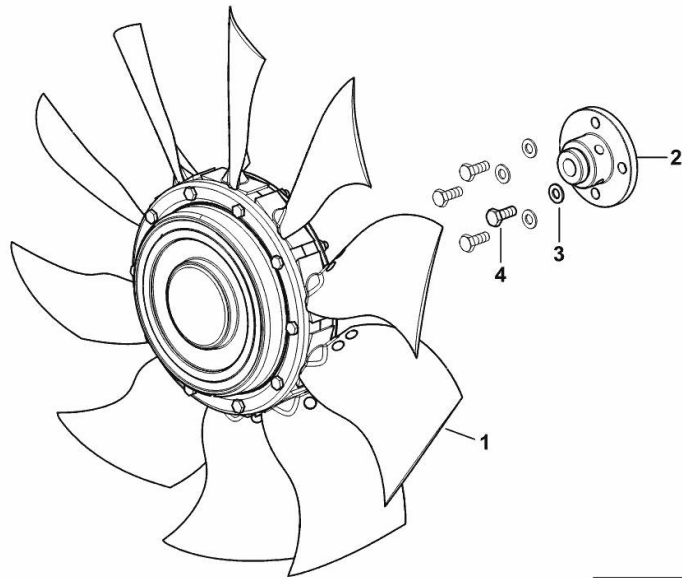
**ENGINE AIR BLOWER**

| Fig. | P/n | QTY | Name |
|------|-----|-----|------|
|------|-----|-----|------|

**Notes:**

[FORTIS 160.4 -> WSXAP00200LS50010]

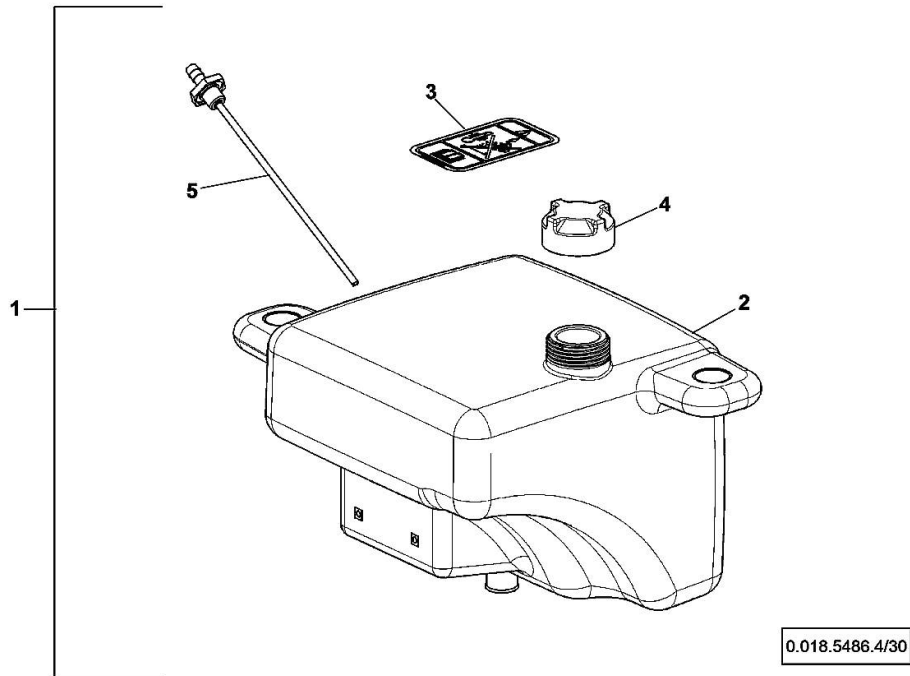
|   |              |   |                       |
|---|--------------|---|-----------------------|
| 1 | 0.019.1872.4 | 1 | fan                   |
| 2 | 0.019.1937.0 | 1 | hub                   |
| 3 | 2.1310.004.2 | 4 | flat washer 8.4x17    |
| 4 | 2.0112.207.2 | 4 | screw m 8 p 1.25 x 20 |



K9\_V3986\_24\_0-A-002

**WATER TANK**

| Fig. | P/n             | QTY | Name               |
|------|-----------------|-----|--------------------|
| 1    | 0.018.5486.4/30 | 1   | small tank         |
| 2    | 0.000.0000.1    |     | cannot be supplied |
| 3    | 2.9939.280.0    | 1   | plate              |
| 4    | 0.010.3465.1    | 1   | plug               |
| 5    | 0.020.1742.3/10 | 1   | tube               |



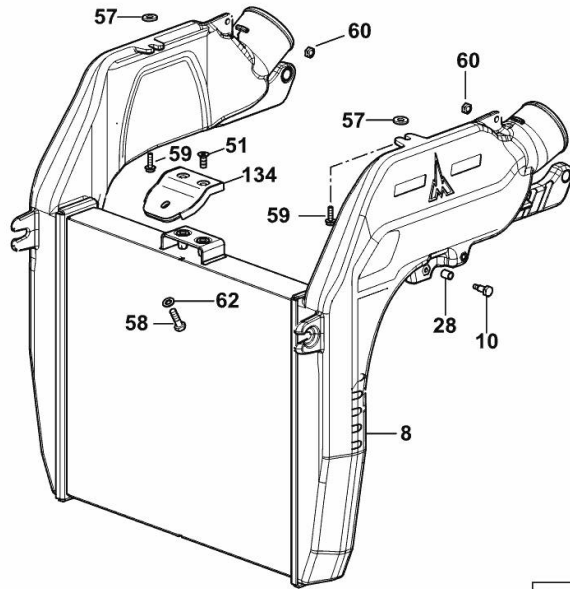
**INTERCOOLER**

| Fig. | P/n | QTY | Name |
|------|-----|-----|------|
|------|-----|-----|------|

**Notes:**

[FORTIS 160.4 -> WSXAP00200LS50010]

|     |                 |    |                       |
|-----|-----------------|----|-----------------------|
| 8   | 0.018.4677.3/90 | 1  | intercooler           |
| 10  | 0.017.6888.0/10 | 1  | pin                   |
| 28  | 0.017.6889.0    | 1  | bushing 8x10x13       |
| 51  | 2.0342.305.3    | 6  | screw m 8 x 20        |
| 57  | 2.1499.215.0    | 2  | washer 8.5x20x1       |
| 58  | 2.0112.210.2    | 5  | screw m 8 p.1.25 x 28 |
| 59  | 2.0129.065.0    | 2  | screw m 6 x 14        |
| 60  | 2.1012.005.7    | 2  | nut m 8               |
| 62  | 2.1310.004.2    | 11 | flat washer 8.4x17    |
| 134 | 0.020.8937.2/20 | 1  | bracket               |



K9\_V7983\_00\_0-C-003

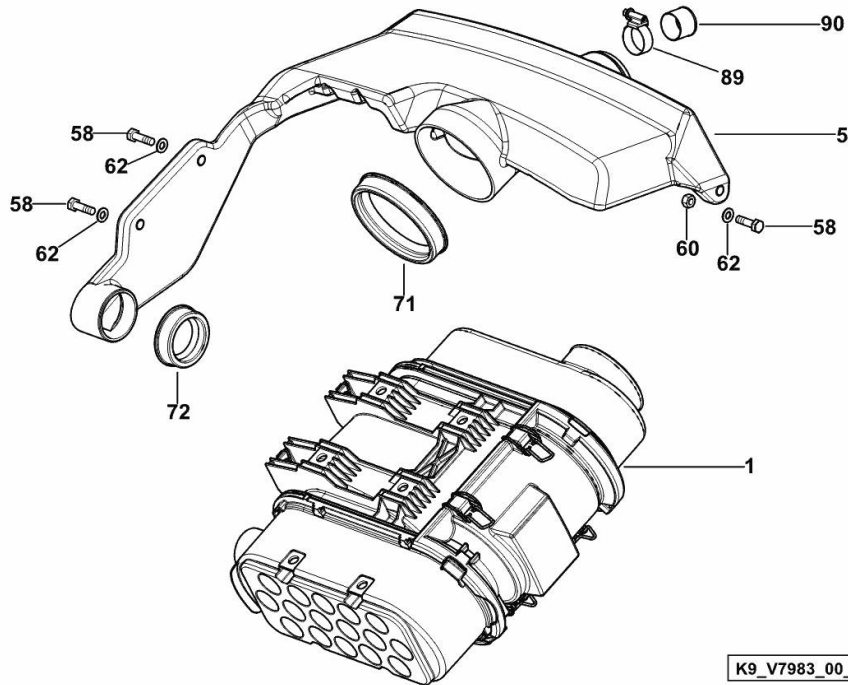
**AIR CLEANER**

| Fig. | P/n | QTY | Name |
|------|-----|-----|------|
|------|-----|-----|------|

**Notes:**

[FORTIS 160.4 -> WSXAP00200LS50010]

|    |                 |    |                                 |
|----|-----------------|----|---------------------------------|
| 1  | 2.4249.736.0    | 1  | air filter 9"<br>☞ 2.4249.736.0 |
| 5  | 0.020.8932.4/10 | 1  | air duct                        |
| 58 | 2.0112.210.2    | 5  | screw m 8 p.1.25 x 28           |
| 60 | 2.1012.005.7    | 2  | nut m 8                         |
| 62 | 2.1310.004.2    | 11 | flat washer 8.4x17              |
| 71 | 0.014.5354.0/10 | 1  | sleeve                          |
| 72 | 0.014.5355.0/10 | 1  | sleeve                          |
| 89 | 04454357        | 1  | tube                            |
| 90 | 2.6851.003.0    | 3  | clamp Ø 25/40                   |



K9\_V7983\_00\_0-B-002

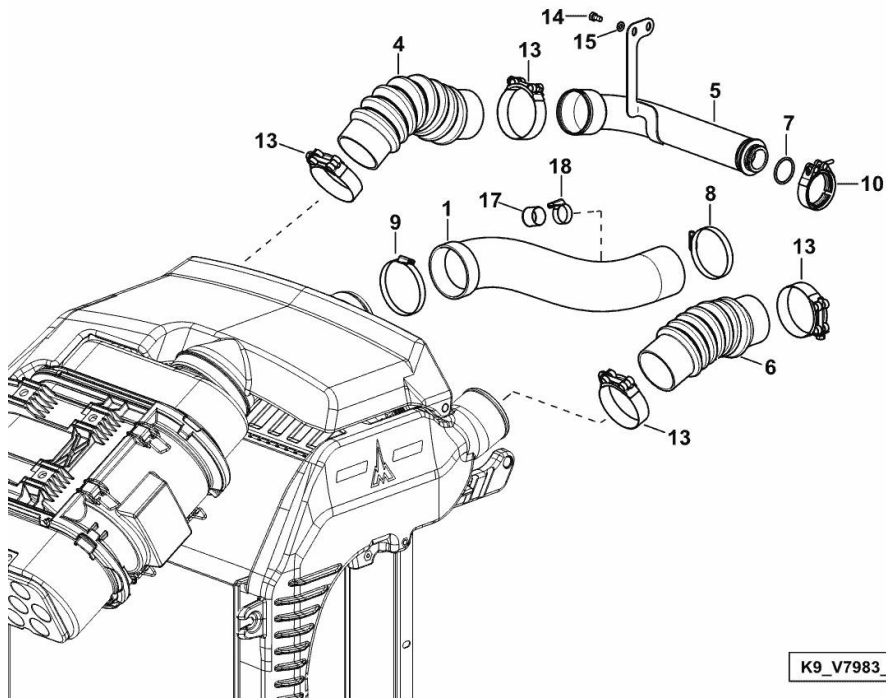
**COOLING SYSTEM**

| Fig. | P/n | QTY | Name |
|------|-----|-----|------|
|------|-----|-----|------|

**Notes:**

[FORTIS 160.4 -> WSXAP00200LS50010]

|    |                 |   |                       |
|----|-----------------|---|-----------------------|
| 1  | 0.019.9146.4    | 1 | tube                  |
| 4  | 0.018.7382.0    | 1 | tube dx/rh/re         |
| 5  | 0.018.5396.4/20 | 1 | tube                  |
| 6  | 0.018.7051.0/10 | 1 | tube                  |
| 7  | 2.1532.517.0    | 1 | oil seal              |
| 8  | 2.6851.008.0    | 1 | clamp Ø 70/90         |
| 9  | 2.6851.010.0    | 1 | clamp 90/110          |
| 10 | 2.6859.112.0    | 1 | clamp Ø 68 mm         |
| 13 | 2.6859.167.0    | 4 | clamp Ø 85-91         |
| 14 | 2.0114.205.2    | 2 | screw m 8 p.1.25 x 16 |
| 15 | 2.1310.004.2    | 2 | flat washer 8.4x17    |
| 17 | 04454357        | 1 | tube                  |
| 18 | 2.6851.003.0    | 1 | clamp Ø 25/40         |

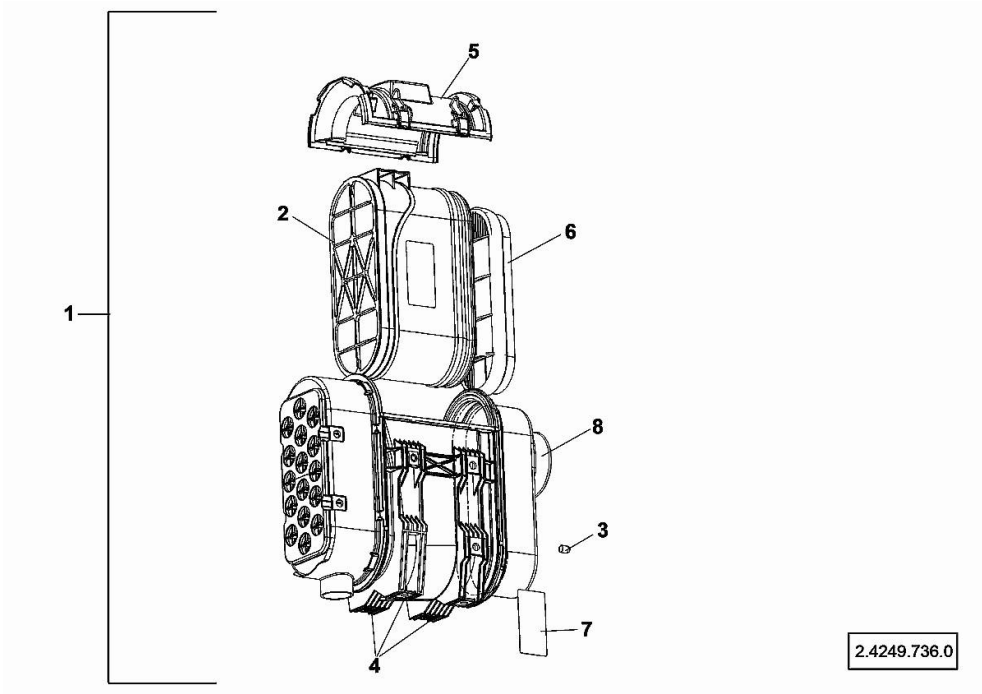


K9\_V7983\_03\_0-A-002



**AIR CLEANER**

| Fig. | P/n          | QTY | Name                        |
|------|--------------|-----|-----------------------------|
| 1    | 2.4249.736.0 | 1   | air filter 9"               |
| 2    | 0.900.0272.0 | 1   | external air filter element |
| 3    | 0.900.1456.7 | 1   | cap                         |
| 4    | 0.900.0272.4 | 3   | clip                        |
| 5    | 0.900.1409.6 | 1   | cover                       |
| 6    | 0.900.0272.1 | 1   | internal air filter element |
| 7    | 0.000.0000.1 |     | cannot be supplied          |
| 8    | 0.000.0000.1 |     | cannot be supplied          |

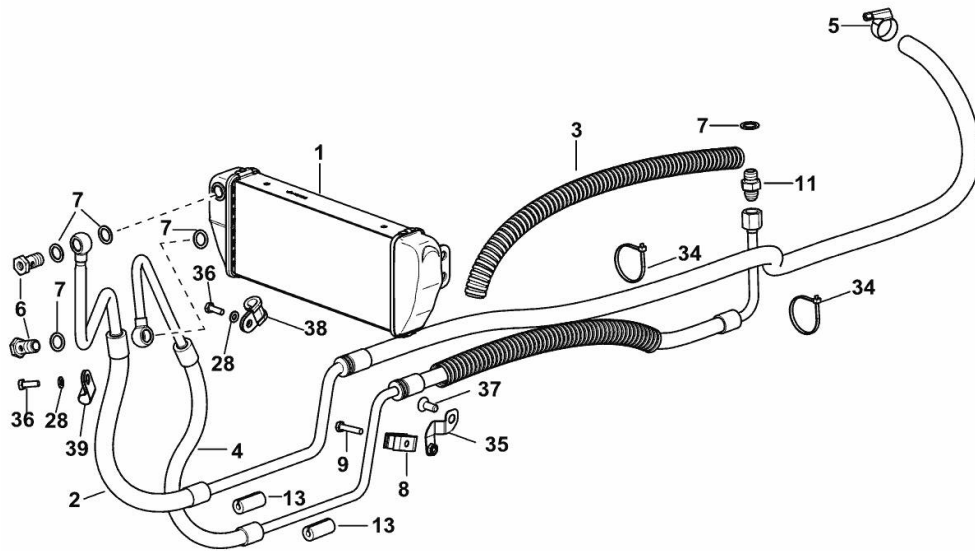


**FUEL COOLER**

| Fig. | P/n | QTY | Name |
|------|-----|-----|------|
|------|-----|-----|------|

**Notes:**

[FORTIS 160.4 -> WSXAP00200LS50010]



|    |                 |   |                          |
|----|-----------------|---|--------------------------|
| 1  | 0.019.0618.4    | 1 | radiator                 |
| 2  | 0.020.1743.3/40 | 1 | tube                     |
| 3  | 0.016.3320.0/20 | 2 | hose reel mm 440         |
| 4  | 0.020.1741.3/20 | 1 | tube                     |
| 5  | 2.6851.001.0    | 2 | clamp Ø 16/25            |
| 6  | 2.3335.006.2    | 2 | pipe union m 14 p.1.5X26 |
| 7  | 2.1569.225.0    | 5 | oil seal                 |
| 8  | 2.3321.009.0    | 1 | clamp 10-12              |
| 9  | 2.0112.011.2    | 2 | screw m 6 p.1x30         |
| 11 | 2.3261.006.2    | 1 | pipe fitting             |
| 13 | 01218045        | 2 | rubber plug              |
| 28 | 2.1310.002.2    | 6 | flat washer 6.4x12.5     |
| 34 | 2.6852.101.0    | 2 | clamp 142x3.6            |
| 35 | 0.020.1740.3    | 1 | bracket                  |
| 36 | 2.0112.006.2    | 2 | screw m 6 p.1 x 18       |
| 37 | 2.0342.305.3    | 1 | screw m 8 x 20           |
| 38 | 2.6839.055.0    | 1 | clamp Ø 11 / 20          |
| 39 | 2.6839.077.0    | 1 | clamp                    |

K9\_V3981\_02\_0-B-002

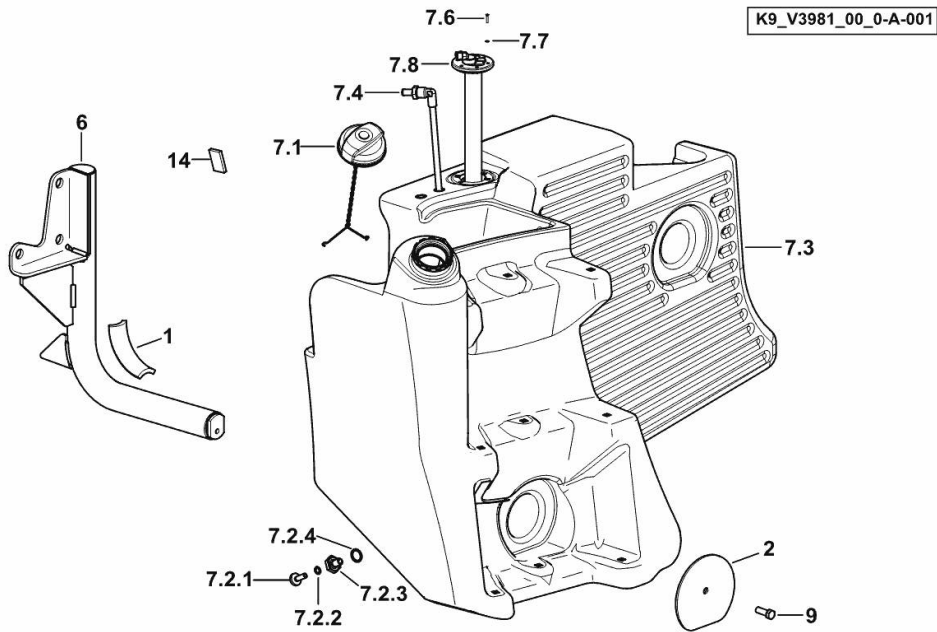
**FUEL TANK SX/LH/LI**

| Fig. | P/n | QTY | Name |
|------|-----|-----|------|
|------|-----|-----|------|

**Notes:**

[FORTIS 160.4 -> WSXAP00200LS50010]

|       |                 |    |                               |
|-------|-----------------|----|-------------------------------|
| 1     | 0.015.7103.0    | 1  | gasket 60x150x18              |
| 2     | 0.018.7194.0    | 1  | plate                         |
| 6     | 0.019.1510.3/20 | 1  | bracket                       |
| 7.1   | 0.016.0151.4    | 1  | plug<br>☞ 0.016.0151.4        |
| 7.2.1 | 0.016.9607.0    | 1  | plug m10                      |
| 7.2.2 | 2.1560.006.0    | 1  | gasket 10.2 x 16              |
| 7.2.3 | 0.016.9605.0    | 1  | plug m14                      |
| 7.2.4 | 2.1539.040.0    | 1  | special oil seal 21.82 x 3.53 |
| 7.3   | 0.019.1518.3/30 | 1  | fuel tank                     |
| 7.4   | 0.018.4039.3    | 1  | tube                          |
| 7.6   | 2.0312.705.2    | 6  | screw                         |
| 7.7   | 2.1310.028.2    | 6  | flat washer                   |
| 7.8   | 2.7059.015.0    | 1  | float                         |
| 9     | 2.0112.413.2    | 1  | screw m 12 p.1.75x35          |
| 14    | 0.016.2235.0    | 24 | gasket                        |



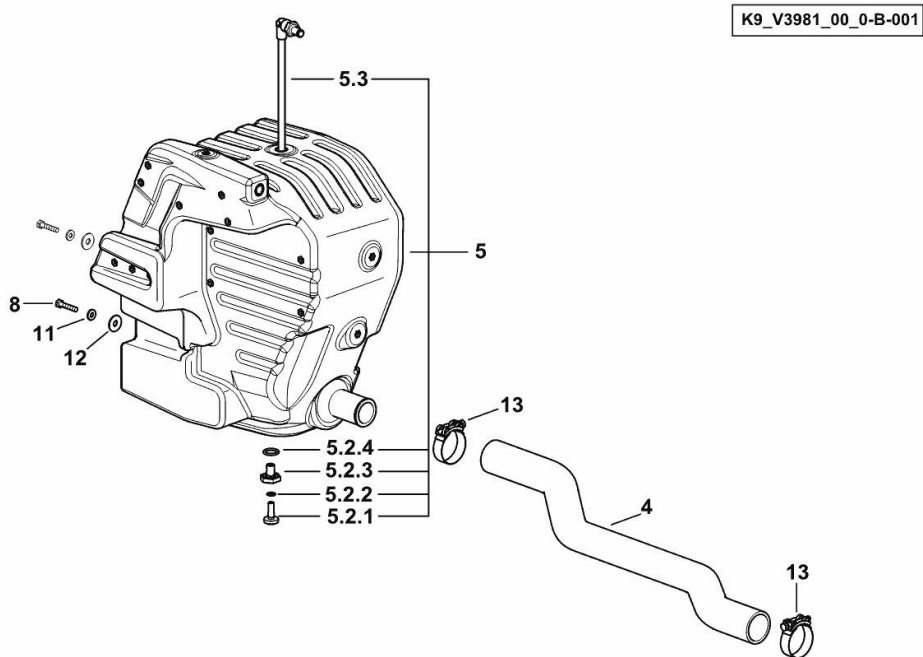
**FUEL SYSTEM - TANK DX/RH/RE**

| Fig. | P/n | QTY | Name |
|------|-----|-----|------|
|------|-----|-----|------|

**Notes:**

[FORTIS 160.4 -> WSXAP00200LS50010]

|       |                 |   |                               |
|-------|-----------------|---|-------------------------------|
| 4     | 0.019.7457.0    | 1 | tube                          |
| 5     | 0.019.1029.4/20 | 1 | fuel tank                     |
| 5.2.1 | 0.016.9607.0    | 1 | plug m10                      |
| 5.2.2 | 2.1560.006.0    | 1 | gasket 10.2 x 16              |
| 5.2.3 | 0.016.9605.0    | 1 | plug m14                      |
| 5.2.4 | 2.1539.040.0    | 1 | special oil seal 21.82 x 3.53 |
| 5.3   | 0.018.4044.3    | 1 | tube                          |
| 8     | 2.0112.215.2    | 2 | screw m 8 p.1.25 x 40         |
| 11    | 2.1310.004.2    | 2 | flat washer 8.4x17            |
| 12    | 2.1312.005.2    | 2 | washer 10.2                   |
| 13    | 2.6859.155.0    | 2 | clamp Ø 59/63                 |



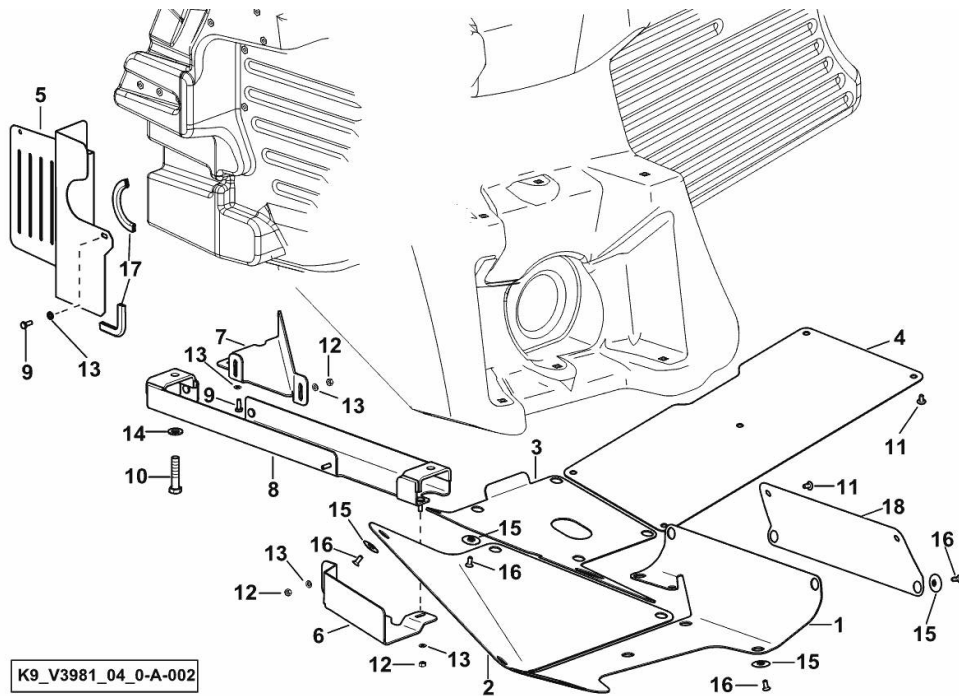
**TANK GUARDS**

| Fig. | P/n | QTY | Name |
|------|-----|-----|------|
|------|-----|-----|------|

**Notes:**

[FORTIS 160.4 -> WSXAP00200LS50010]

|    |                 |    |                       |
|----|-----------------|----|-----------------------|
| 1  | 0.018.3740.0/20 | 1  | guard                 |
| 2  | 0.018.3743.0/10 | 1  | guard                 |
| 3  | 0.018.4544.0/10 | 1  | guard                 |
| 4  | 0.018.4554.0/10 | 1  | guard                 |
| 5  | 0.018.9403.0/10 | 1  | shield dx/rh/re       |
| 6  | 0.019.0138.0    | 1  | guard                 |
| 7  | 0.019.0409.0    | 1  | guard dx/rh/re        |
| 8  | 0.019.0416.3/10 | 1  | crosspiece            |
| 9  | 2.0112.005.2    | 4  | screw m 6 p.1 x 16    |
| 10 | 2.0112.420.2    | 2  | screw m 12 p.1.75x55  |
| 11 | 2.0339.015.3    | 9  | screw m 8 p.1.25 x 12 |
| 12 | 2.1011.103.2    | 4  | nut m 6 p.1           |
| 13 | 2.1310.002.2    | 8  | flat washer 6.4x12.5  |
| 14 | 2.1310.007.2    | 2  | flat washer 13 x 24   |
| 15 | 2.1399.048.2    | 18 | shim                  |
| 16 | 2.0342.203.3    | 18 | screw m 6 p.1.0 x 16  |
| 17 | 0.159.7255.0    | 2  | gasket mm 105         |
| 18 | 0.020.8074.0    | 1  | guard                 |



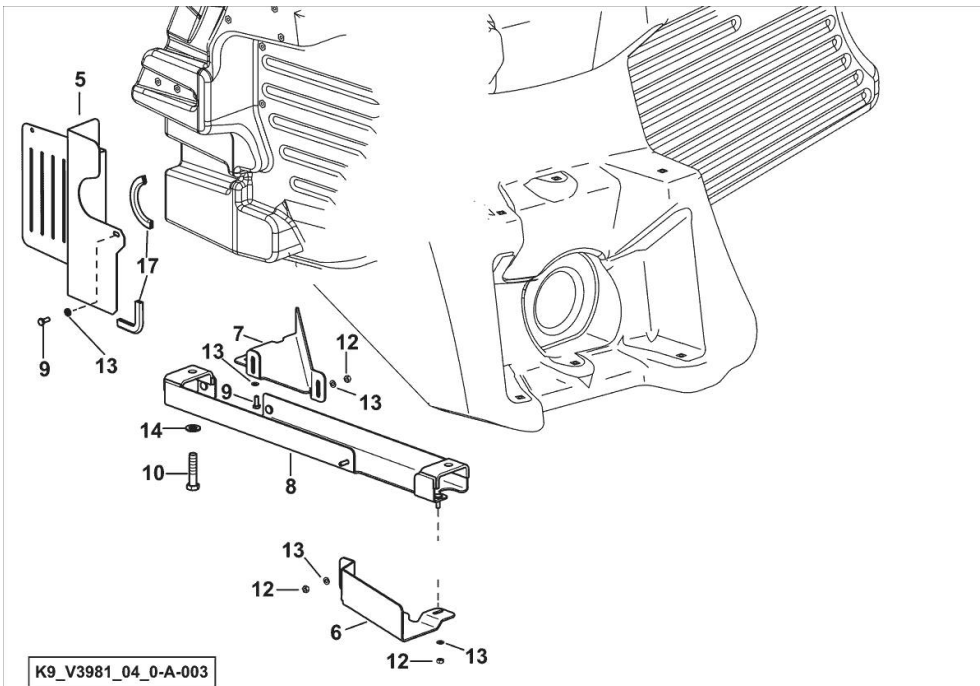
**TANK GUARDS**

| Fig. | P/n | QTY | Name |
|------|-----|-----|------|
|------|-----|-----|------|

**Notes:**

[FORTIS 160.4 -> WSXAP00200LS50010]

|    |                 |   |                      |
|----|-----------------|---|----------------------|
| 5  | 0.018.9403.0/10 | 1 | shield dx/rh/re      |
| 6  | 0.019.0138.0    | 1 | guard                |
| 7  | 0.019.0409.0    | 1 | guard dx/rh/re       |
| 8  | 0.019.0416.3/10 | 1 | crosspiece           |
| 9  | 2.0112.005.2    | 4 | screw m 6 p.1 x 16   |
| 10 | 2.0112.420.2    | 2 | screw m 12 p.1.75x55 |
| 12 | 2.1011.103.2    | 4 | nut m 6 p.1          |
| 13 | 2.1310.002.2    | 8 | flat washer 6.4x12.5 |
| 14 | 2.1310.007.2    | 2 | flat washer 13 x 24  |
| 17 | 0.159.7255.0    | 2 | gasket mm 105        |



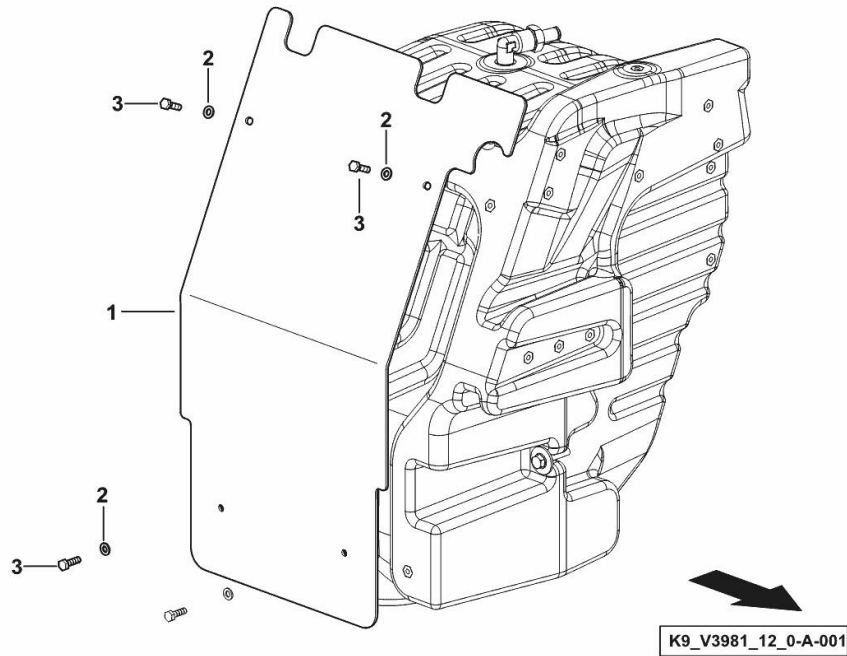
**TANK GUARDS DX/RH/RE**

| Fig. | P/n | QTY | Name |
|------|-----|-----|------|
|------|-----|-----|------|

**Notes:**

[FORTIS 160.4 -> WSXAP00200LS50010]

|   |                 |   |                      |
|---|-----------------|---|----------------------|
| 1 | 0.018.5667.0/30 | 1 | shield               |
| 2 | 2.1310.002.2    | 4 | flat washer 6.4x12.5 |
| 3 | 2.0112.007.2    | 4 | screw m 6 p.1 x 20   |



Thank you so much for reading.  
Please click the “Buy Now!”  
button below to download the  
complete manual.



After you pay.

You can download the most  
perfect and complete manual in  
the world immediately.

Our support email:

[ebooklibonline@outlook.com](mailto:ebooklibonline@outlook.com)