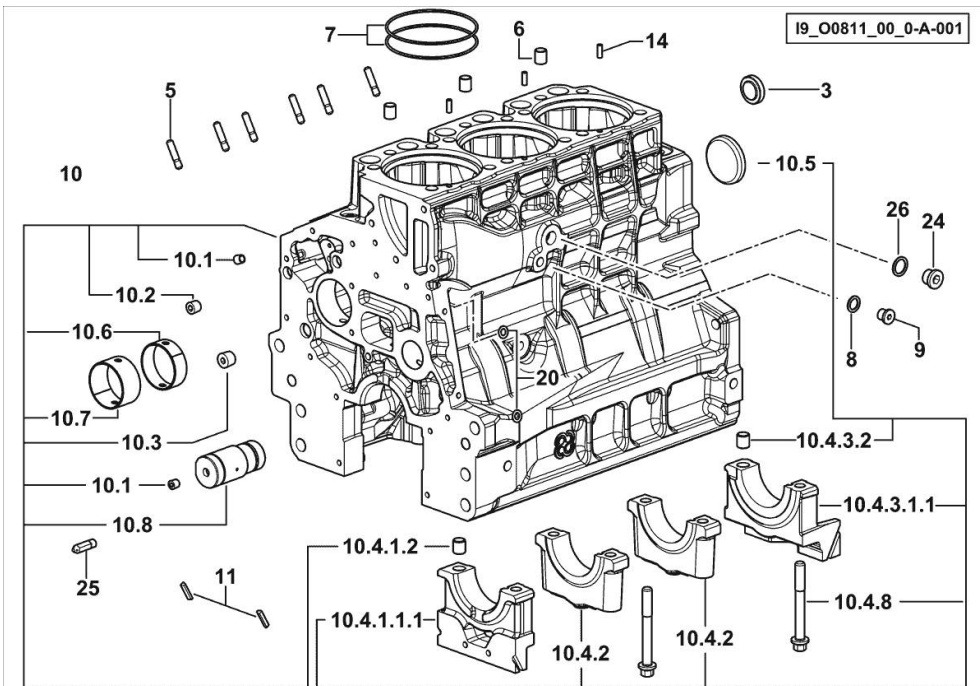


Section: B0 - ENGINE

**CRANKCASE**

| Fig. | P/n | QTY | Name |
|------|-----|-----|------|
|------|-----|-----|------|

**Notes:**[Frutteto<sup>3</sup> 75 Natural 2WD] [Frutteto<sup>3</sup> 75 Natural 4WD]

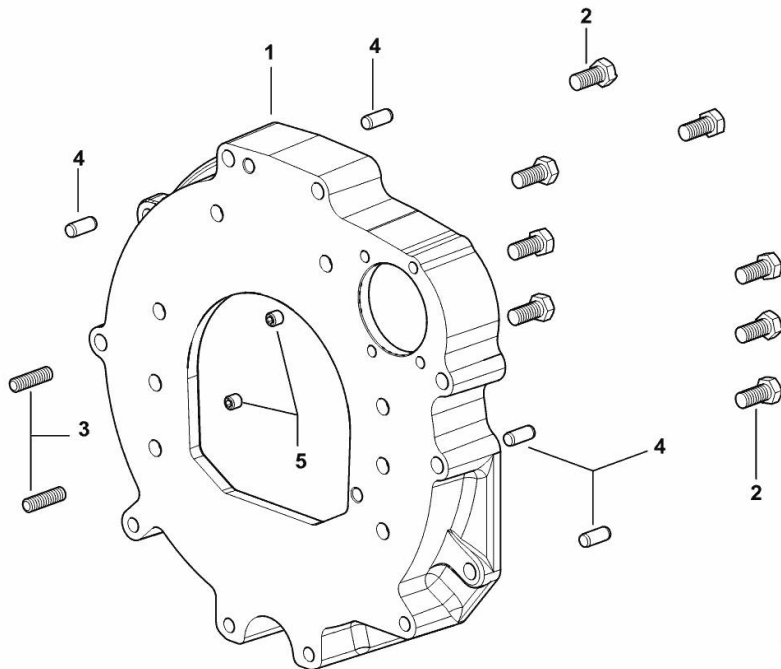
|            |                 |    |                              |
|------------|-----------------|----|------------------------------|
| 3          | 2.3199.312.2/20 | 1  | plug m 35x1.5x9.5            |
| 5          | 2.0439.279.7    | 6  | stud bolt m 8 p.1 x 25       |
| 6          | 2.1559.188.2    | 3  | bush 11.4 x 14 x16           |
| 7          | 2.1539.259.0    | 6  | special oil seal 107.62x2.62 |
| 8          | 2.1560.010.0    | 1  | gasket 14.2 x 20             |
| 9          | 2.3199.292.0    | 1  | plug 1/4" gas                |
| 10         | 0.014.9911.4/30 | 1  | crankcase                    |
| 10.1       | 2.3130.001.1    | 12 | plug 1/8" gas                |
| 10.2       | 2.3130.002.1    | 4  | plug 1/4" gas                |
| 10.3       | 2.3130.003.1    | 2  | plug 3/8" gas                |
| 10.4.1.1   | 0.065.1112.7/10 | 1  | support                      |
| 10.4.1.2   | 2.1699.165.0    | 1  | bush 12.3x15x16              |
| 10.4.2     | 0.065.1114.0/10 | 2  | support                      |
| 10.4.3.1.1 | 0.065.1116.7/10 | 1  | support                      |
| 10.4.3.2   | 2.1699.165.0    | 1  | bush 12.3x15x16              |
| 10.4.8     | 0.065.1117.0    | 8  | screw m 12 x 100             |
| 10.5       | 2.3179.012.0    | 1  | plug 60                      |
| 10.6       | 0.065.1140.0    | 3  | special bushing 59X55X20     |
| 10.7       | 0.065.1141.0    | 1  | special bushing 59X55X30     |
| 10.8       | 0.014.1340.0/10 | 1  | pin mm 85                    |
| 11         | 0.066.1152.0/10 | 4  | gasket                       |
| 14         | 2.1549.154.2    | 3  | bush 4.8x5.8x16              |
| 20         | 2.1470.004.2    | 4  | lock washer 8                |
| 24         | 2.3120.101.0    | 1  | plug m 18 p.1.5              |
| 25         | 0.013.4946.0/10 | 1  | sprayer nozzle               |
| 26         | 2.1560.014.0    | 1  | washer 18.2 x 24             |

**MONOBLOC ENGINE-GEARBOX CONNECTING FLANGE**

| Fig. | P/n | QTY | Name |
|------|-----|-----|------|
|------|-----|-----|------|

**Notes:**[Frutteto<sup>3</sup> 75 Natural 2WD] [Frutteto<sup>3</sup> 75 Natural 4WD]

|   |              |   |                               |
|---|--------------|---|-------------------------------|
| 1 | 0.015.8814.0 | 1 | flange                        |
| 2 | 2.0112.511.2 | 8 | screw m 14 p.2 x 30           |
| 3 | 2.0432.255.7 | 2 | stud bolt m 12 p.1.75-1.25x25 |
| 4 | 2.1651.912.0 | 4 | cylindrical plug 12x28        |
| 5 | 2.0512.404.7 | 2 | screw                         |



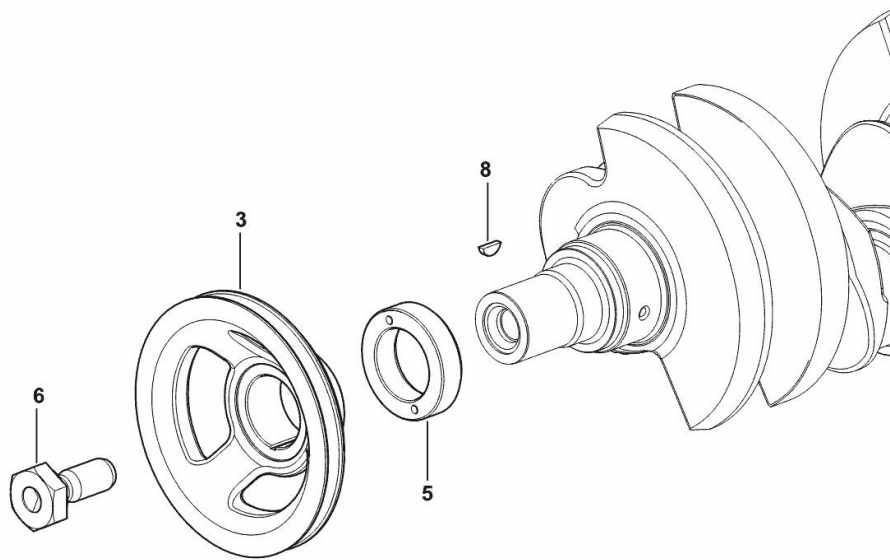
Section: B0 - ENGINE

**CRANKSHAFT PULLEY**

| Fig. | P/n | QTY | Name |
|------|-----|-----|------|
|------|-----|-----|------|

**Notes:**[Frutteto<sup>3</sup> 75 Natural 2WD] [Frutteto<sup>3</sup> 75 Natural 4WD]

|   |                 |   |                     |
|---|-----------------|---|---------------------|
| 3 | 0.007.1457.0/30 | 1 | pulley              |
| 5 | 0.085.1248.0/20 | 1 | hub                 |
| 6 | 2.0399.144.7/10 | 1 | screw m 20 p.1.5x51 |
| 8 | 2.1720.006.0    | 1 | key 4x6.5           |



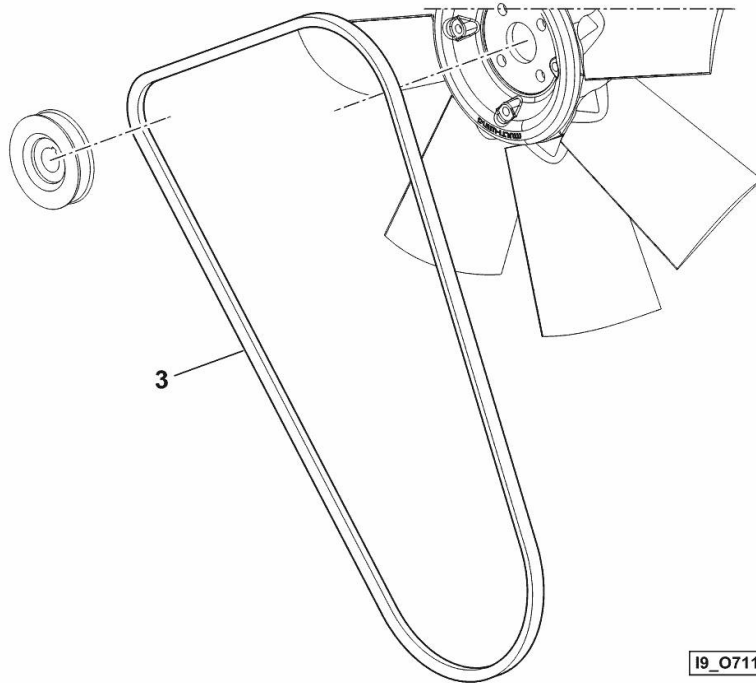
19\_33312\_02\_0-A-001

**BELT**

| Fig. | P/n | QTY | Name |
|------|-----|-----|------|
|------|-----|-----|------|

**Notes:**[Frutteto<sup>3</sup> 75 Natural 2WD] [Frutteto<sup>3</sup> 75 Natural 4WD]

|   |              |   |                          |
|---|--------------|---|--------------------------|
| 3 | 2.4119.198.0 | 1 | vee belt AV 10.7x1240 mm |
|---|--------------|---|--------------------------|



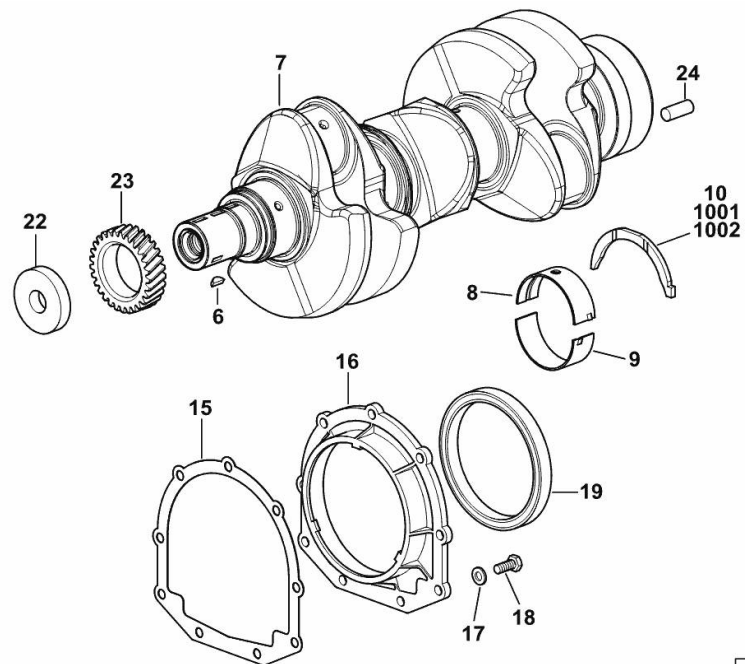
Section: B0 - ENGINE

**CRANKSHAFT**

| Fig. | P/n | QTY | Name |
|------|-----|-----|------|
|------|-----|-----|------|

**Notes:**

[Frutteto<sup>3</sup> 75 Natural 2WD] [Frutteto<sup>3</sup> 75 Natural 2WD] 3040 <- [Frutteto<sup>3</sup> 75 Natural 4WD] [Frutteto<sup>3</sup> 75 Natural 4WD] 3040 <-



|      |                 |   |                             |
|------|-----------------|---|-----------------------------|
| 6    | 2.1720.006.0    | 1 | key 4x6.5                   |
| 7    | 0.019.2255.0/30 | 1 | crankshaft                  |
| 8    | 0.019.5455.0    | 4 | main half bushing STANDARD  |
| 9    | 0.019.5456.0    | 4 | main half bushing STANDARD  |
| 10   | 0.065.1218.0    | 4 | shim STANDARD               |
| 15   | 0.065.1254.0/20 | 1 | gasket                      |
| 16   | 0.007.1711.0/10 | 1 | cover                       |
| 17   | 2.1475.002.2    | 9 | conical washer 8            |
| 18   | 2.0112.207.2    | 9 | screw m 8 p 1.25 x 20       |
| 19   | 2.1529.073.0    | 1 | special oil seal 110x130x13 |
| 22   | 2.1599.524.7    | 1 | washer 21x60x12             |
| 23   | 0.065.1323.0/30 | 1 | gear Z = 29                 |
| 24   | 2.1651.915.0    | 1 | pin 12x35                   |
| 1001 | 0.065.1218.7    |   | shim + mm 0.10              |
| 1002 | 0.065.1218.8    |   | shim + mm 0.15              |

19\_O8312\_00\_0-A-002

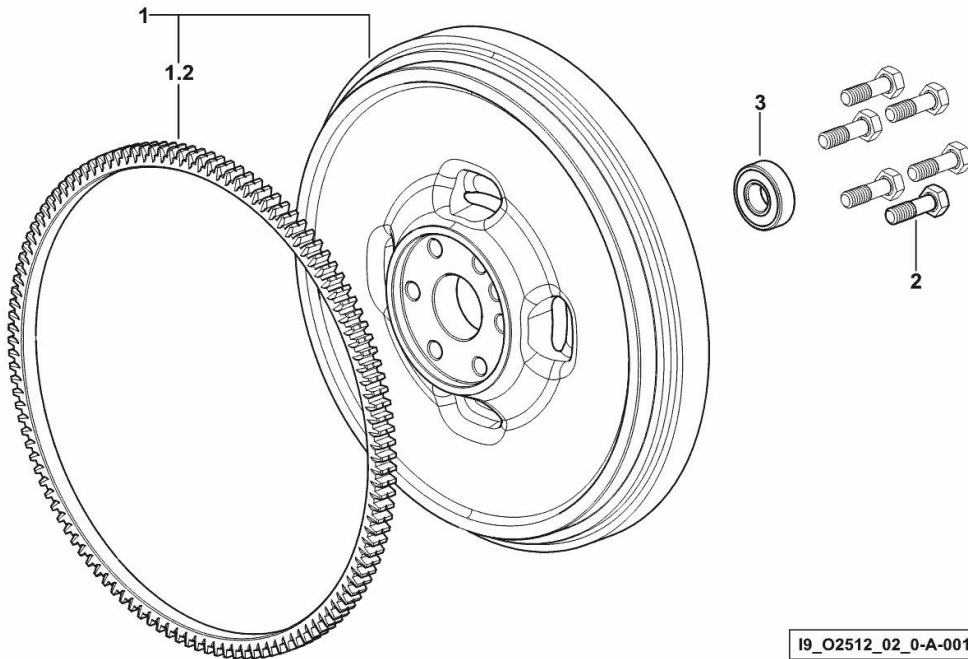
Section: B0 - ENGINE

**ENGINE FLYWHEEL**

| Fig. | P/n | QTY | Name |
|------|-----|-----|------|
|------|-----|-----|------|

**Notes:**[Frutteto<sup>3</sup> 75 Natural 2WD] [Frutteto<sup>3</sup> 75 Natural 4WD]

|     |                 |   |                       |
|-----|-----------------|---|-----------------------|
| 1   | 0.007.1617.3/30 | 1 | flywheel              |
| 1.2 | 0.069.1242.0    | 1 | crown wheel Z = 121   |
| 2   | 2.0119.174.0/10 | 6 | screw m 12 p.1.25x45  |
| 3   | 2.2041.008.9    | 1 | ball bearing 20x47x14 |



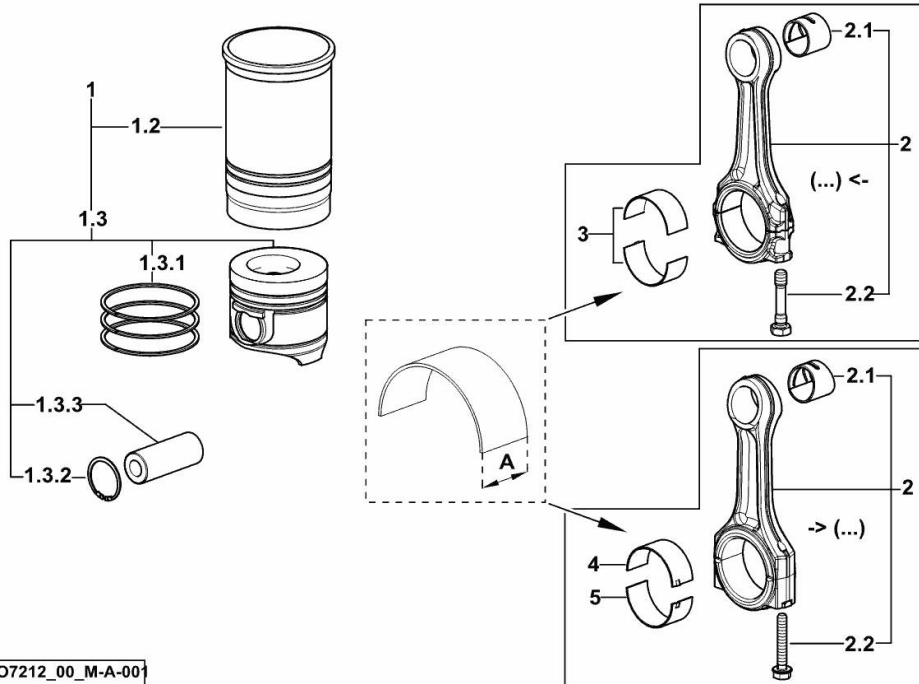
I9\_O2512\_02\_0-A-001

**CYLINDER - PISTON - CONNECTING ROD**

| Fig. | P/n | QTY | Name |
|------|-----|-----|------|
|------|-----|-----|------|

**Notes:**

[Frutteto<sup>3</sup> 75 Natural 2WD] [Frutteto<sup>3</sup> 75 Natural 4WD]



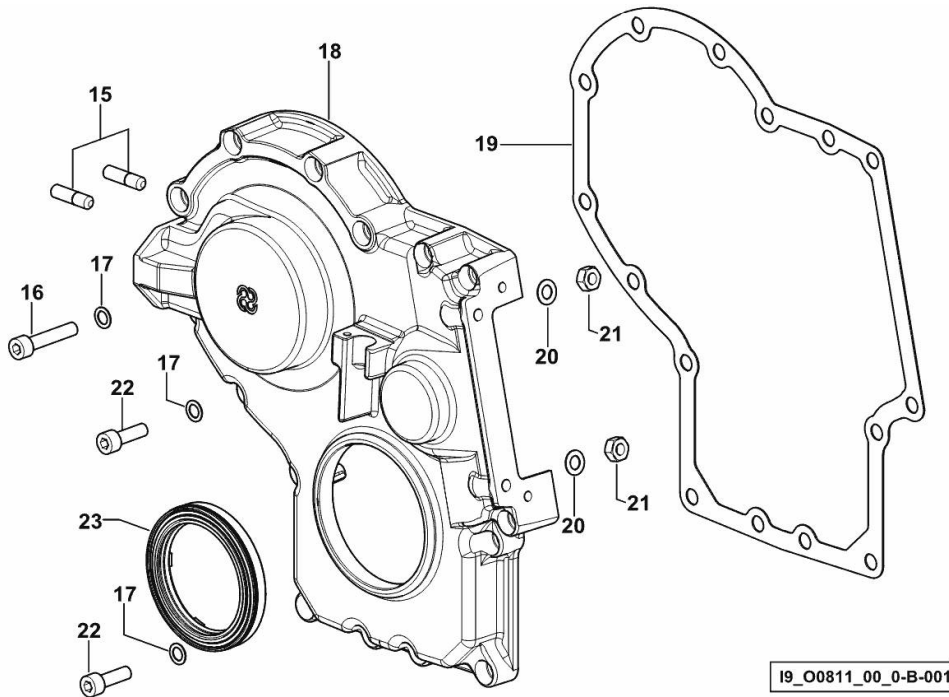
|       |                 |   |  |
|-------|-----------------|---|--|
| 1     | 0.055.0065.A    | 3 | cyl. piston assembly "A"<br>- CLASS A                          |
| 1     | 0.055.0065.B    | 3 | cyl. piston assembly "B"<br>- CLASS B                          |
| 1.2   | 0.A12.2675.0    | 1 | engine cylinder "A"<br>- CLASS A                               |
| 1.2   | 0.B12.2675.0    | 1 | engine cylinder "B"<br>- CLASS B                               |
| 1.3   | 0.055.0060.A    | 1 | complete piston "A"<br>- CLASS A                               |
| 1.3   | 0.055.0060.B    | 1 | complete piston "B"<br>- CLASS B                               |
| 1.3.1 | 0.338.0052.6/20 | 1 | piston ring set  |
| 1.3.2 | 2.1411.014.1    | 2 | circlip 35   |
| 1.3.3 | 0.078.1236.0    | 1 | piston pin Ø 18 / Ø 35 / L = mm 86                             |
| 2     | 0.014.5175.3    | 3 | engine connecting rod<br>(...) <=                              |
| 2     | 0.019.2226.3/10 | 3 | engine connecting rod<br>=> (...)                              |
| 2.1   | 2.1559.255.0    | 1 | special bushing 34.60x39.130x34.65<br>(...) <=                 |
| 2.1   | 2.1559.532.0    | 1 | special bushing 34.60x39.130x36.65<br>=> (...)                 |
| 2.2   | 2.0399.213.0    | 2 | screw m 12 p.1.25x61.5<br>(...) <=                             |
| 2.2   | 2.0399.365.0    | 2 | screw m 10 p.1.25x61.5<br>=> (...)                             |
| 3     | 0.065.1225.0    | 6 | con.rod half bushing STANDARD - A = 28.75 -> 29.00<br>(...) <= |
| 3     | 0.065.1225.7    | 6 | con.rod half bushing - mm 0.25<br>(...) <=                     |
| 3     | 0.065.1225.8    | 6 | con.rod half bushing - mm 0.50<br>(...) <=                     |
| 4     | 0.019.5453.0    | 3 | con.rod half bushing STANDARD - A = 29.85 -> 30.10<br>=> (...) |
| 5     | 0.019.5454.0    | 3 | con.rod half bushing STANDARD - A = 29.85 -> 30.10<br>=> (...) |

**TIMING CASE**

| Fig. | P/n | QTY | Name |
|------|-----|-----|------|
|------|-----|-----|------|

**Notes:**[Frutteto<sup>3</sup> 75 Natural 2WD] [Frutteto<sup>3</sup> 75 Natural 4WD]

|    |                 |    |                                 |
|----|-----------------|----|---------------------------------|
| 15 | 2.0432.003.7    | 2  | stud bolt m 8 p.1.25 / p.1 x 20 |
| 16 | 2.0312.214.2    | 7  | screw m 8 p.1.25 x 40           |
| 17 | 2.1480.014.1    | 15 | washer 8                        |
| 18 | 0.013.4981.0    | 1  | guard                           |
| 19 | 0.065.1150.0/30 | 1  | gasket                          |
| 20 | 2.1470.004.2    | 4  | lock washer 8                   |
| 21 | 2.1011.405.2    | 2  | nut m 8 p.1                     |
| 22 | 2.0312.208.2    | 8  | screw m 8 p.1.25 x 25           |
| 23 | 2.1529.167.0    | 1  | oil seal                        |



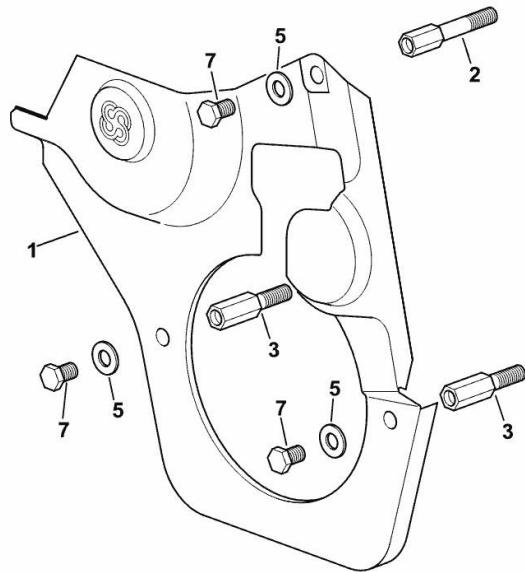


**GUARD PLATE**

| Fig. | P/n | QTY | Name |
|------|-----|-----|------|
|------|-----|-----|------|

**Notes:**[Frutteto<sup>3</sup> 75 Natural 2WD] [Frutteto<sup>3</sup> 75 Natural 4WD]

|   |                 |   |                                     |
|---|-----------------|---|-------------------------------------|
| 1 | 0.007.1262.3/50 | 1 | guard                               |
| 2 | 0.012.0707.0    | 1 | small column m 8 p.1.25 / L = mm 60 |
| 3 | 0.012.0708.0    | 2 | small column m 8 p.1.25 / L = mm 50 |
| 5 | 2.1310.004.2    | 3 | flat washer 8.4x17                  |
| 7 | 2.0112.203.2    | 3 | screw m 8 p.1.25 x 12               |



I9\_33011\_02\_0-A-001

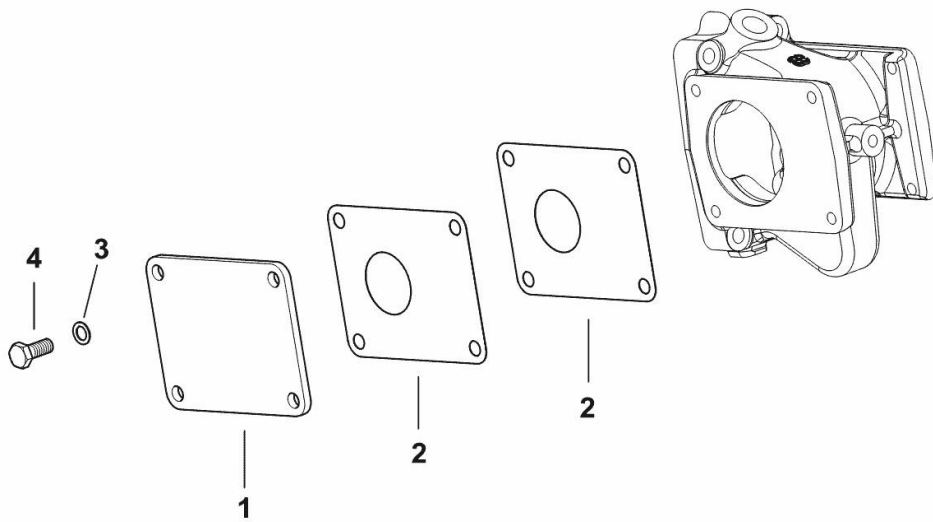
**CASING COVER**

| Fig. | P/n | QTY | Name |
|------|-----|-----|------|
|------|-----|-----|------|

**Notes:**[Frutteto<sup>3</sup> 75 Natural 2WD] [Frutteto<sup>3</sup> 75 Natural 4WD]

|   |              |   |                       |
|---|--------------|---|-----------------------|
| 1 | 0.007.0812.0 | 1 | small plate           |
| 2 | 0.163.6350.0 | 2 | gasket                |
| 3 | 2.1480.014.1 | 4 | washer 8              |
| 4 | 2.0112.207.2 | 4 | screw m 8 p 1.25 x 20 |

I9\_IC819\_01\_0-A-001

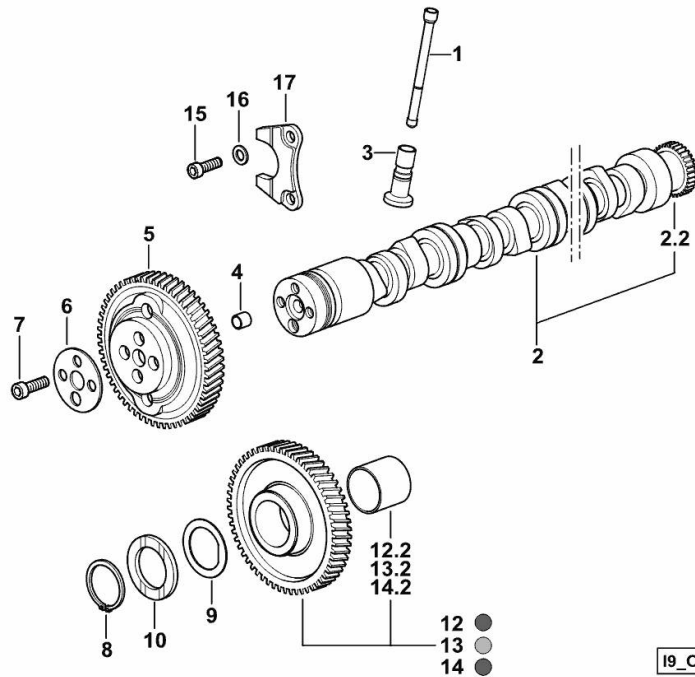


**CAMSHAFT**

| Fig. | P/n | QTY | Name |
|------|-----|-----|------|
|------|-----|-----|------|

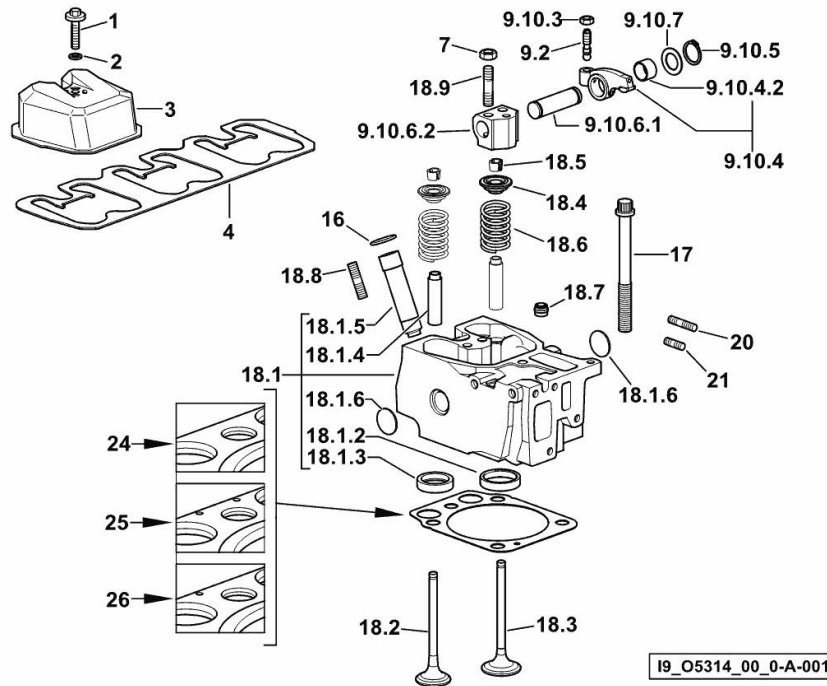
**Notes:**

[Frutteto<sup>3</sup> 75 Natural 2WD] [Frutteto<sup>3</sup> 75 Natural 4WD]



19\_O5313\_00\_0-A-001

|      |                 |   |   |
|------|-----------------|---|---|
| 1    | 0.065.1331.2    | 6 | rod   |
| 2    | 0.014.4011.3    | 1 | camshaft  |
| 2.2  | 0.065.1324.0/10 | 1 | gear Z = 32                                       |
| 3    | 0.065.1330.0    | 6 | tappets   |
| 4    | 2.1559.398.0    | 1 | bushing 10.5x13x12                                |
| 5    | 0.013.5017.0    | 1 | gear z=58   |
| 6    | 0.065.1350.0    | 1 | small disc  |
| 7    | 2.0132.207.2    | 4 | screw m 10 p.1 x 25                               |
| 8    | 2.1410.016.1    | 1 | circlip 40  |
| 9    | 0.065.1352.0    | 1 | shim  |
| 10   | 0.018.2233.0    | 2 | shoulder ring                                     |
| 12   | 0.007.1177.3/20 | 1 | gear z = 57<br>- WITH RED IDENTIFICATION STAMP    |
| 12.2 | 2.1559.185.0/10 | 1 | bushing   |
| 13   | 0.007.1178.3/20 | 1 | gear z = 57<br>- WITH YELLOW IDENTIFICATION STAMP |
| 13.2 | 2.1559.185.0/10 | 1 | bushing   |
| 14   | 0.007.1179.3/20 | 1 | gear z = 57<br>- WITH GREEN IDENTIFICATION STAMP  |
| 14.2 | 2.1559.185.0/10 | 1 | bushing   |
| 15   | 2.0312.205.2    | 2 | screw   |
| 16   | 2.1480.014.1    | 2 | washer 8  |
| 17   | 0.065.1353.0    | 1 | small plate                                       |

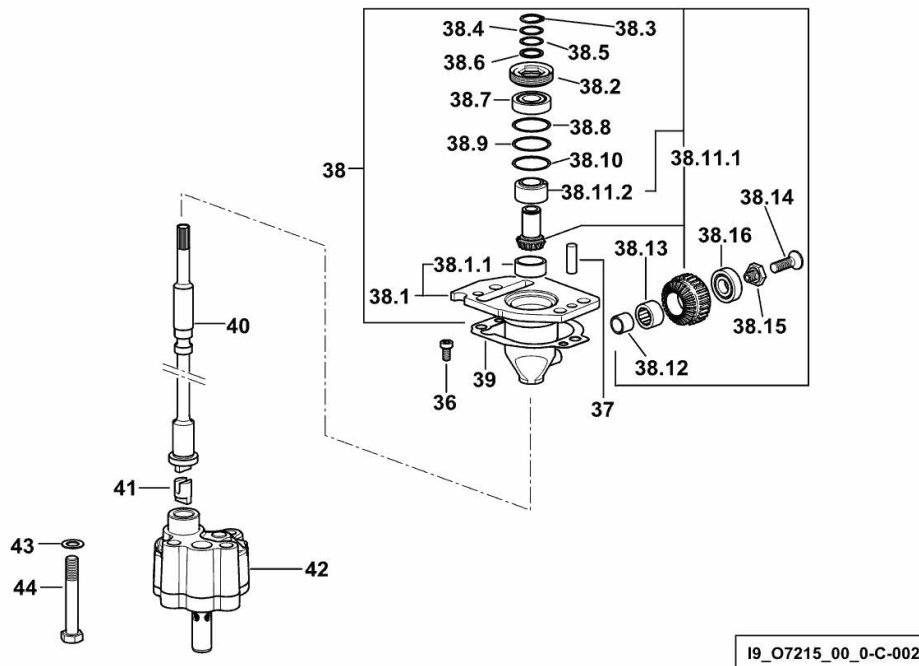
Section: B0 - ENGINE  
CYLINDER HEAD

| Fig.  | P/n             | QTY | Name                               |
|---|-----------------|-----|------------------------------------|
| <b>Notes:</b>   |                 |     |                                    |
| [Frutteto <sup>3</sup> 75 Natural 2WD] [Frutteto <sup>3</sup> 75 Natural 4WD] |                 |     |                                    |
| 1   | 2.0399.288.2/10 | 3   | screw m 8x36x46                    |
| 2   | 2.1532.018.0    | 3   | oil seal 9.19 x 2.62               |
| 3   | 0.007.1139.0/10 | 3   | small cap                          |
| 4   | 0.069.1450.0/30 | 1   | tappet gasket                      |
| 7   | 2.1011.421.2    | 6   | nut m 10 p.1.25                    |
| 9.2   | 0.021.1434.0    | 2   | screw                              |
| 9.10.3  | 2.1011.405.2    | 2   | nut m 8 p.1                        |
| 9.10.4  | 0.066.1432.3    | 2   | rocker arm                         |
| 9.10.4.2  | 2.1559.021.0/40 | 1   | bushing 15x19x22                   |
| 9.10.5  | 2.1410.055.7    | 2   | circlip 19                         |
| 9.10.6.1  | 0.066.1431.0    | 1   | pin                                |
| 9.10.6.2  | 0.066.1430.0/10 | 1   | support                            |
| 9.10.7  | 2.1599.432.0    | 2   | shoulder ring                      |
| 16  | 2.1532.507.0    | 3   | oil seal 17x3.53                   |
| 17  | 0.012.2673.0    | 12  | screw m 14 p.2x141                 |
| 18.1  | 0.017.0868.3    | 1   | engine head                        |
| 18.1.2  | 0.078.1426.0    | 1   | valve seat                         |
| 18.1.3  | 0.066.1427.0    | 1   | valve seat                         |
| 18.1.4  | 0.007.1779.0/20 | 2   | valve guide                        |
| 18.1.5  | 0.012.9984.0/20 | 1   | bush                               |
| 18.1.6  | 2.3170.012.2    | 2   | expansion plug Ø 30                |
| 18.2  | 0.010.6022.0    | 1   | exhaust valve mm 39.1 / Ø mm 9     |
| 18.3  | 0.010.6017.0    | 1   | inlet valve mm 43.63 / Ø mm 9      |
| 18.4  | 0.066.1425.0    | 2   | cup                                |
| 18.5  | 0.074.1423.0    | 4   | conical valve cotter               |
| 18.6  | 2.4019.287.0    | 2   | spring                             |
| 18.7  | 2.1519.117.0    | 2   | special oil seal                   |
| 18.8  | 2.0432.161.7    | 1   | stud bolt m 10 p.1.5 / p.1.25 x 40 |
| 18.9  | 2.0432.163.7    | 2   | stud bolt m 10 p.1.5 / p.1.25 x 45 |
| 20  | 2.0432.011.7    | 3   | stud bolt m 8 p.1.25 / p.1 x 40    |
| 21  | 2.0432.005.7    | 3   | stud bolt m 8 p.1.5 / p.1 x 25     |
| 24  | 0.015.9190.0    | 1   | head gasket mm 1.2                 |
| 25  | 0.015.9191.0    | 1   | head gasket mm 1.4                 |
| 26  | 0.015.9192.0    | 1   | head gasket mm 1.6                 |

Section: B0 - ENGINE

**ENGINE OIL PUMP**

| Fig. | P/n | QTY | Name |
|------|-----|-----|------|
|------|-----|-----|------|

**Notes:**[Frutteto<sup>3</sup> 75 Natural 2WD] [Frutteto<sup>3</sup> 75 Natural 4WD]

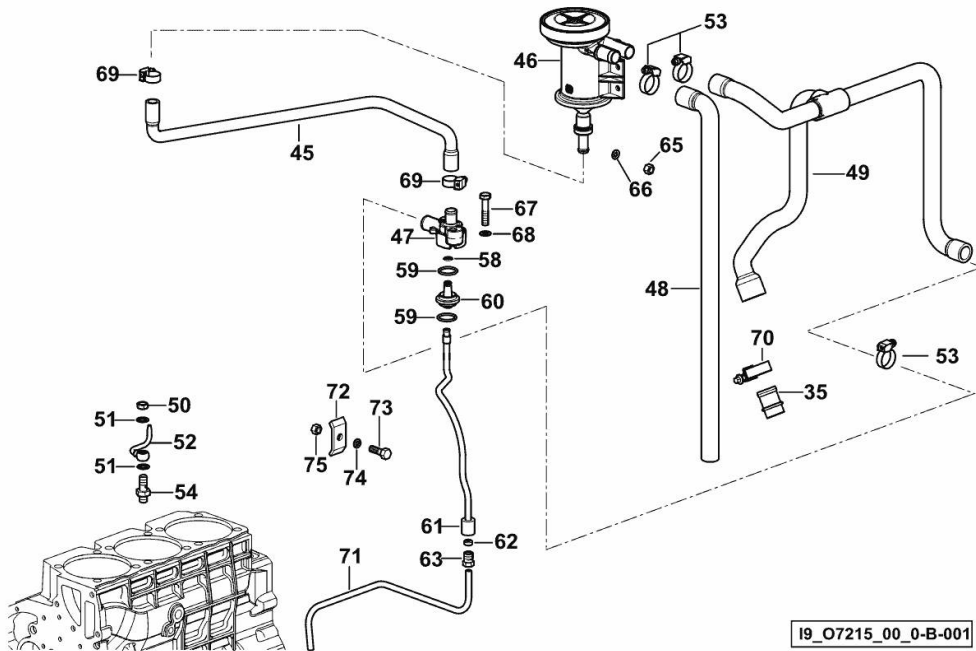
|         |                 |   |                                  |
|---------|-----------------|---|----------------------------------|
| 36      | 2.0169.005.2    | 2 | screw m 6 p.1 x 12               |
| 37      | 2.1651.711.0    | 2 | pin 8 x 14                       |
| 38      | 0.013.1629.4/20 | 1 | support                          |
| 38.1    | 0.013.1629.3/20 | 1 | support                          |
| 38.1.1  | 2.1559.186.0    | 1 | special bushing 26 x 31.5 x 35   |
| 38.2    | 2.1219.025.2/10 | 1 | ring nut m 36 p.1.5              |
| 38.3    | 2.1410.057.1    | 1 | circlip 15                       |
| 38.4    | 2.1589.153.0    | 1 | shoulder ring 15.2 x 19 x 1.00   |
| 38.5    | 2.1589.146.0    | 2 | shoulder ring 15.2 x 19 x 0.15   |
| 38.6    | 2.1589.147.0    | 2 | shoulder ring 15.2 x 19 x 0.10   |
| 38.7    | 2.2020.001.0    | 1 | ball bearing 15 x 32 x 8.00      |
| 38.8    | 2.1589.148.0    | 1 | shoulder ring 28.2 x 31.8 x 0.5  |
| 38.9    | 2.1589.150.0    | 2 | shoulder ring 28.2 x 31.8 x 0.1  |
| 38.10   | 2.1589.151.0    | 2 | shoulder ring 28.2 x 31.8 x 0.15 |
| 38.11.1 | 0.065.1558.6/10 | 1 | bevel drive                      |
| 38.11.2 | 0.065.1559.0    | 1 | bush                             |
| 38.12   | 2.2680.020.0    | 1 | ring 12 x 15 x 12                |
| 38.13   | 2.2725.016.0    | 1 | roller cage 15 x 21 x 12         |
| 38.14   | 2.0342.007.6    | 1 | screw m 4 p.0.7 x 30             |
| 38.15   | 2.0399.128.2/10 | 1 | screw m 8 p.1 x 8                |
| 38.16   | 2.2030.002.0    | 1 | ball bearing 12 x 28 x 8         |
| 39      | 0.065.1560.0/30 | 2 | gasket                           |
| 40      | 0.065.1569.0/40 | 1 | shaft                            |
| 41      | 0.065.1562.0/10 | 1 | joint                            |
| 42      | 0.014.7994.4    | 1 | oil pump                         |
| 43      | 2.1470.006.2    | 2 | lock washer 10                   |
| 44      | 2.0112.323.2    | 2 | screw m 10 p.1.5x70              |

**LUBRICATION**

| Fig. | P/n | QTY | Name |
|------|-----|-----|------|
|------|-----|-----|------|

**Notes:**

[Frutteto<sup>3</sup> 75 Natural 2WD] [Frutteto<sup>3</sup> 75 Natural 4WD]



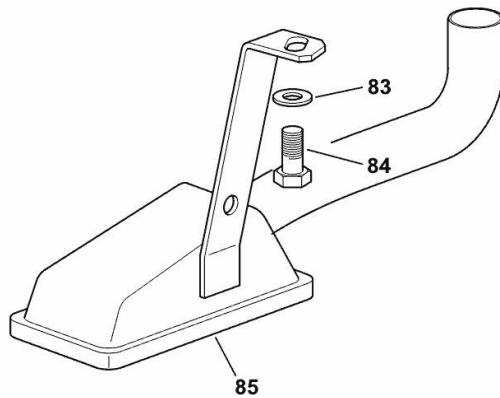
|    |                 |   |                               |
|----|-----------------|---|-------------------------------|
| 35 | 0.011.5918.0/10 | 1 | tube                          |
| 45 | 0.013.7012.0    | 1 | tube                          |
| 46 | 0.013.5023.0    | 1 | sediment bowl                 |
| 47 | 0.013.5291.0    | 1 | flange                        |
| 48 | 0.013.8200.0    | 1 | tube                          |
| 49 | 0.013.7640.0    | 1 | tube                          |
| 50 | 2.1099.108.2    | 3 | special nut m 10 p.1          |
| 51 | 2.1560.006.0    | 6 | gasket 10.2 x 16              |
| 52 | 0.016.7136.2    | 3 | sprayers                      |
| 53 | 2.6851.002.0    | 3 | clamp Ø 20/32                 |
| 54 | 0.065.1160.3/20 | 3 | valve                         |
| 58 | 2.1532.012.0    | 1 | oil seal 6.75 x 1.78          |
| 59 | 2.1539.072.0    | 2 | special oil seal 23.52 x 1.78 |
| 60 | 0.066.1558.0    | 1 | bush                          |
| 61 | 0.066.1557.2    | 1 | tube                          |
| 62 | 2.3350.003.1    | 1 | nosepiece 8                   |
| 63 | 2.3339.418.1    | 1 | pipe fitting m 12 p.1         |
| 65 | 2.1120.103.2    | 2 | nut m 6                       |
| 66 | 2.1310.003.2    | 2 | flat washer 7.4x14            |
| 67 | 2.0112.215.2    | 2 | screw m 8 p.1.25 x 40         |
| 68 | 2.1474.009.2    | 2 | spring washer 8               |
| 69 | 2.6851.001.0    | 2 | clamp Ø 16/25                 |
| 70 | 2.6851.003.0    | 1 | clamp Ø 25/40                 |
| 71 | 0.007.1427.0    | 1 | tube                          |
| 72 | 0.002.8816.0    | 1 | small plate                   |
| 73 | 2.0112.007.2    | 1 | screw m 6 p.1 x 20            |
| 74 | 2.1470.002.2    | 1 | lock washer 6                 |
| 75 | 2.1011.103.2    | 1 | nut m 6 p.1                   |

**LUBRICANT OIL SUCTION PIPE**

| Fig. | P/n | QTY | Name |
|------|-----|-----|------|
|------|-----|-----|------|

**Notes:**[Frutteto<sup>3</sup> 75 Natural 2WD] [Frutteto<sup>3</sup> 75 Natural 4WD]

|    |                 |   |                       |
|----|-----------------|---|-----------------------|
| 83 | 2.1470.004.2    | 1 | lock washer 8         |
| 84 | 2.0112.205.2    | 1 | screw m 8 p.1.25 x 16 |
| 85 | 0.007.1425.3/10 | 1 | tube                  |



19\_N9915\_06\_0-A-001

Thank you so much for reading.  
Please click the “Buy Now!”  
button below to download the  
complete manual.



After you pay.

You can download the most  
perfect and complete manual in  
the world immediately.

Our support email:

[ebooklibonline@outlook.com](mailto:ebooklibonline@outlook.com)