

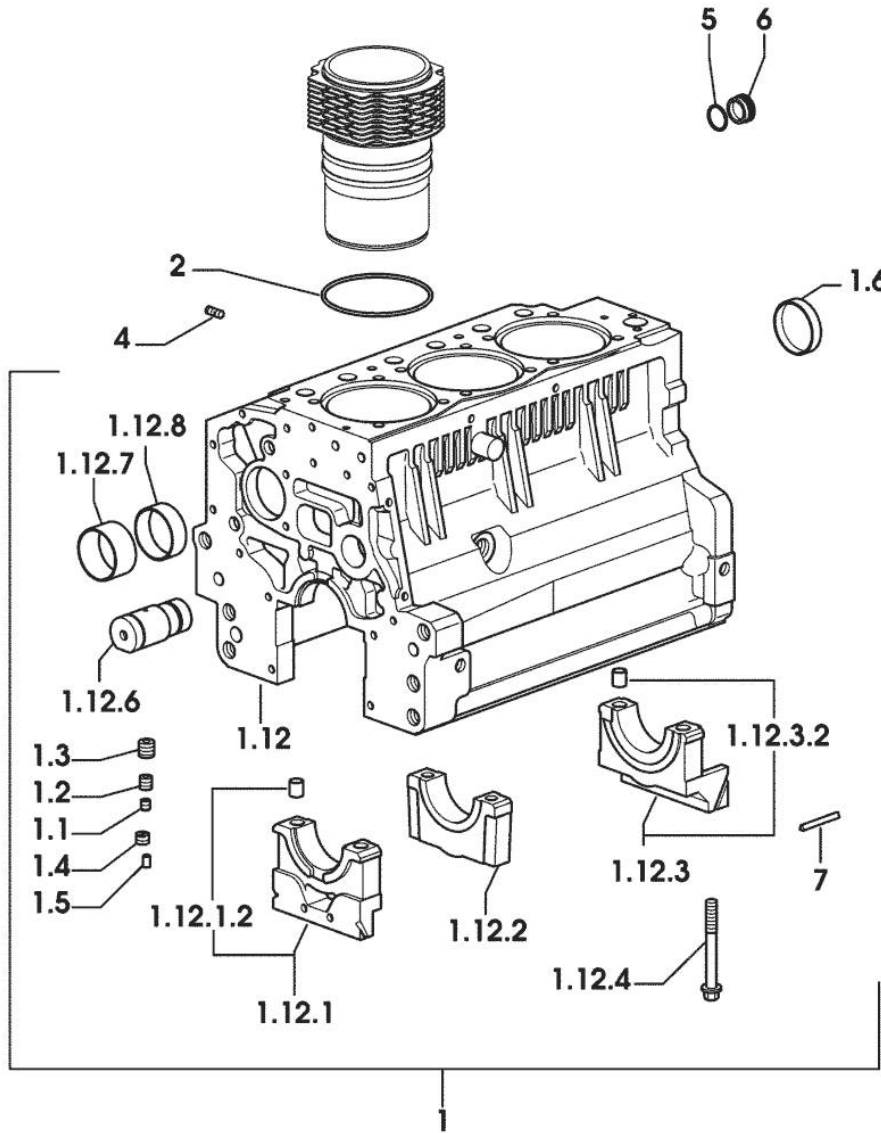
Section: ENGINE
CRANKCASE

9_34811_00_0_A

| Fig. | P/n | QTY | Name |
|------|-----|-----|------|
|------|-----|-----|------|

Notes:
 [H-355 F-XE]

| | | | |
|----------|-----------------|---|---------------------------------|
| 1 | 0.007.1150.6/10 | 1 | crankcase |
| 1.1 | 2.3130.001.1 | 9 | plug 1/8" gas |
| 1.2 | 2.3130.002.1 | 2 | plug 1/4" gas |
| 1.3 | 2.3130.003.1 | 7 | plug 3/8" gas |
| 1.4 | 2.1324.011.0 | 1 | plug |
| 1.5 | 2.3199.092.0 | 3 | plug 8 x 12 |
| 1.6 | 2.3179.012.0 | 1 | plug 60 |
| 1.12 | 0.000.0000.1 | | cannot be supplied |
| 1.12.1 | 0.065.1112.7 | 1 | support |
| 1.12.1.2 | 2.1699.165.0 | 1 | bush 12.3x15x16 |
| 1.12.2 | 0.065.1114.0/10 | 2 | support |
| 1.12.3 | 0.065.1116.3 | 1 | support |
| 1.12.3.2 | 2.1699.165.0 | 1 | bush 12.3x15x16 |
| 1.12.4 | 0.065.1117.0 | 8 | screw m 12 x 100 |
| 1.12.6 | 0.066.1151.0 | 1 | pin |
| 1.12.7 | 0.065.1141.0 | 1 | special bushing 59X55X30 |
| 1.12.8 | 0.065.1140.0 | 3 | special bushing 59X55X20 |
| 2 | 2.1539.130.0/10 | 3 | special oil seal 117.07x3.53 |
| 4 | 2.0432.003.7 | 9 | stud bolt m 8 p.1.25 / p.1 x 20 |
| 5 | 2.1532.072.0 | 1 | oil seal 26.70x1.78 |
| 6 | 2.3199.405.2 | 1 | plug m 28 p.1.5 |
| 7 | 0.066.1152.0/10 | 4 | gasket |



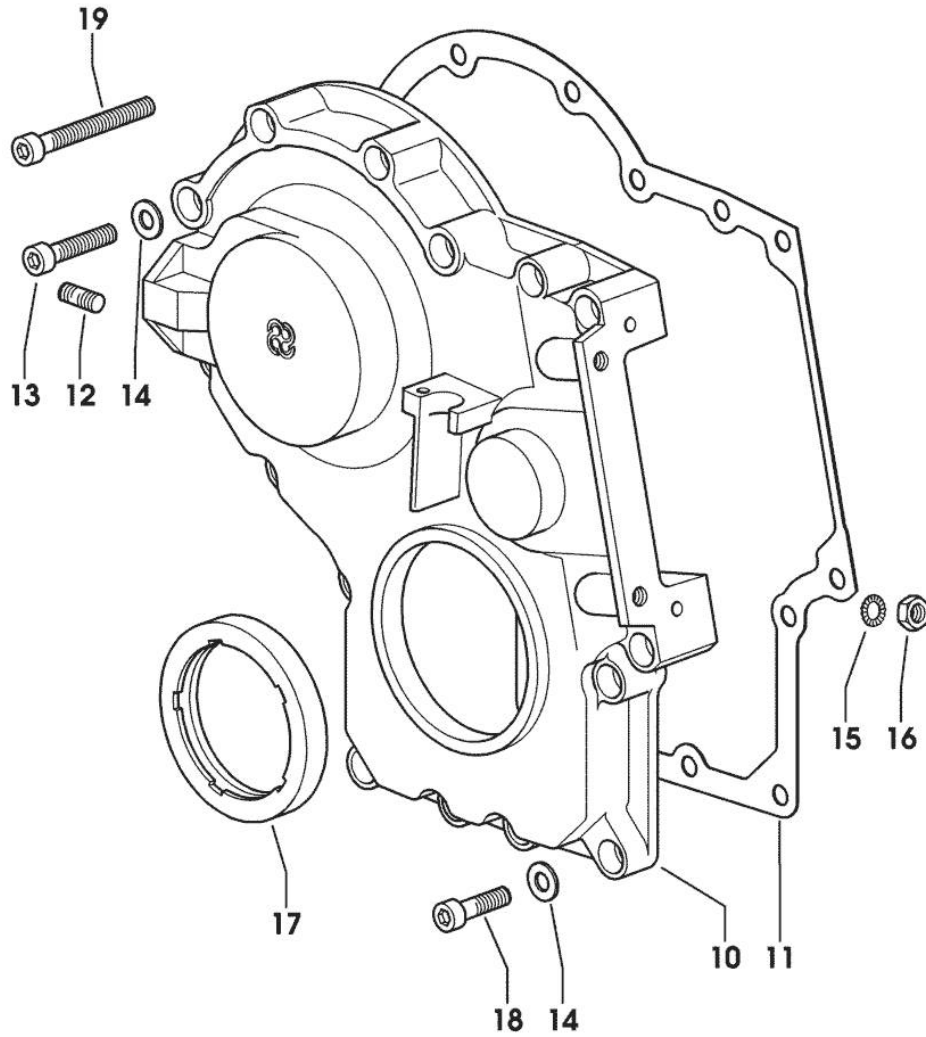
9_34811_00_0_B

Section: ENGINE
TIMING CASE

| Fig. | P/n | QTY | Name |
|------|-----|-----|------|
|------|-----|-----|------|

Notes:
[H-355 F-XE]

| | | | |
|----|-----------------|----|---------------------------------|
| 10 | 0.013.4981.0 | 1 | guard |
| 11 | 0.065.1150.0/30 | 1 | gasket |
| 12 | 2.0432.003.7 | 2 | stud bolt m 8 p.1.25 / p.1 x 20 |
| 13 | 2.0312.214.2 | 3 | screw m 8 p.1.25 x 40 |
| 14 | 2.1480.014.1 | 15 | washer 8 |
| 15 | 2.1470.004.2 | 4 | lock washer 8 |
| 16 | 2.1011.405.2 | 2 | nut m 8 p.1 |
| 17 | 2.1529.141.0 | 1 | special oil seal |
| 18 | 2.0312.208.2 | 8 | screw m 8 p.1.25 x 25 |
| 19 | 2.0312.219.2 | 4 | screw m 8 p.1.25x65 |



Section: ENGINE

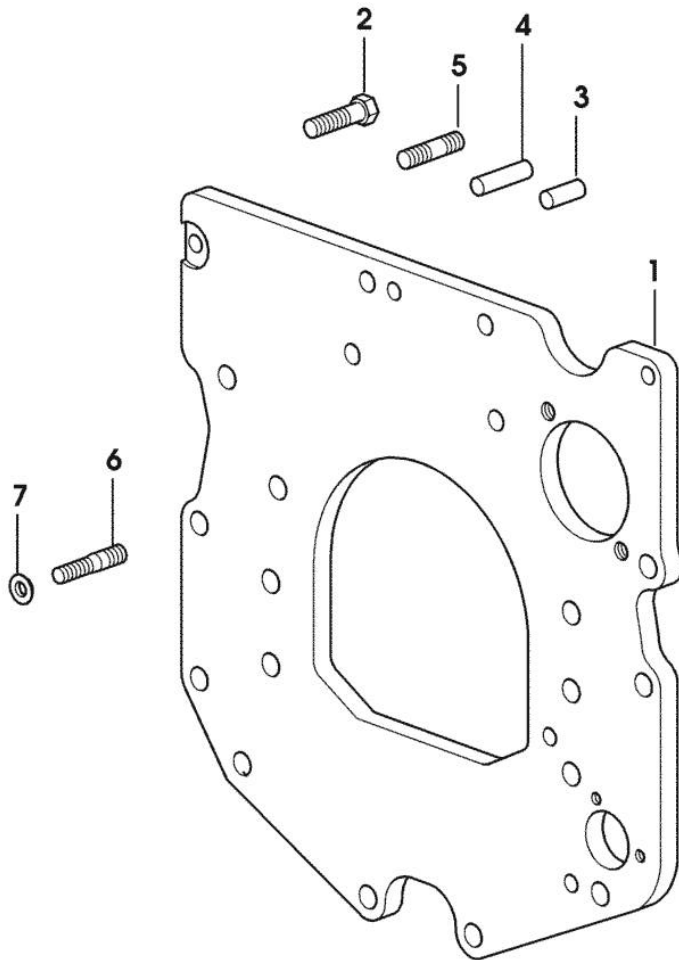
MONOBLOC ENGINE-GEARBOX CONNECTING FLANGE

| Fig. | P/n | QTY | Name |
|------|-----|-----|------|
|------|-----|-----|------|

Notes:

[H-355 F-XE]

| | | | |
|---|-----------------|---|-----------------------------------|
| 1 | 0.007.1882.0/50 | 1 | flange |
| 2 | 2.0112.511.2 | 8 | screw m 14 p.2 x 30 |
| 3 | 2.1651.912.0 | 2 | cylindrical plug 12x28 |
| 4 | 2.1651.917.0 | 1 | cylindrical plug 12x40 |
| 5 | 2.0432.257.7 | 1 | stud bolt m 12 p.1.75 - 1.25 x 30 |
| 6 | 2.0439.250.7 | 1 | stud bolt m 12 / m 10 x 30 |
| 7 | 0.011.9294.0/10 | 1 | bush |



9_38611_01_0_0

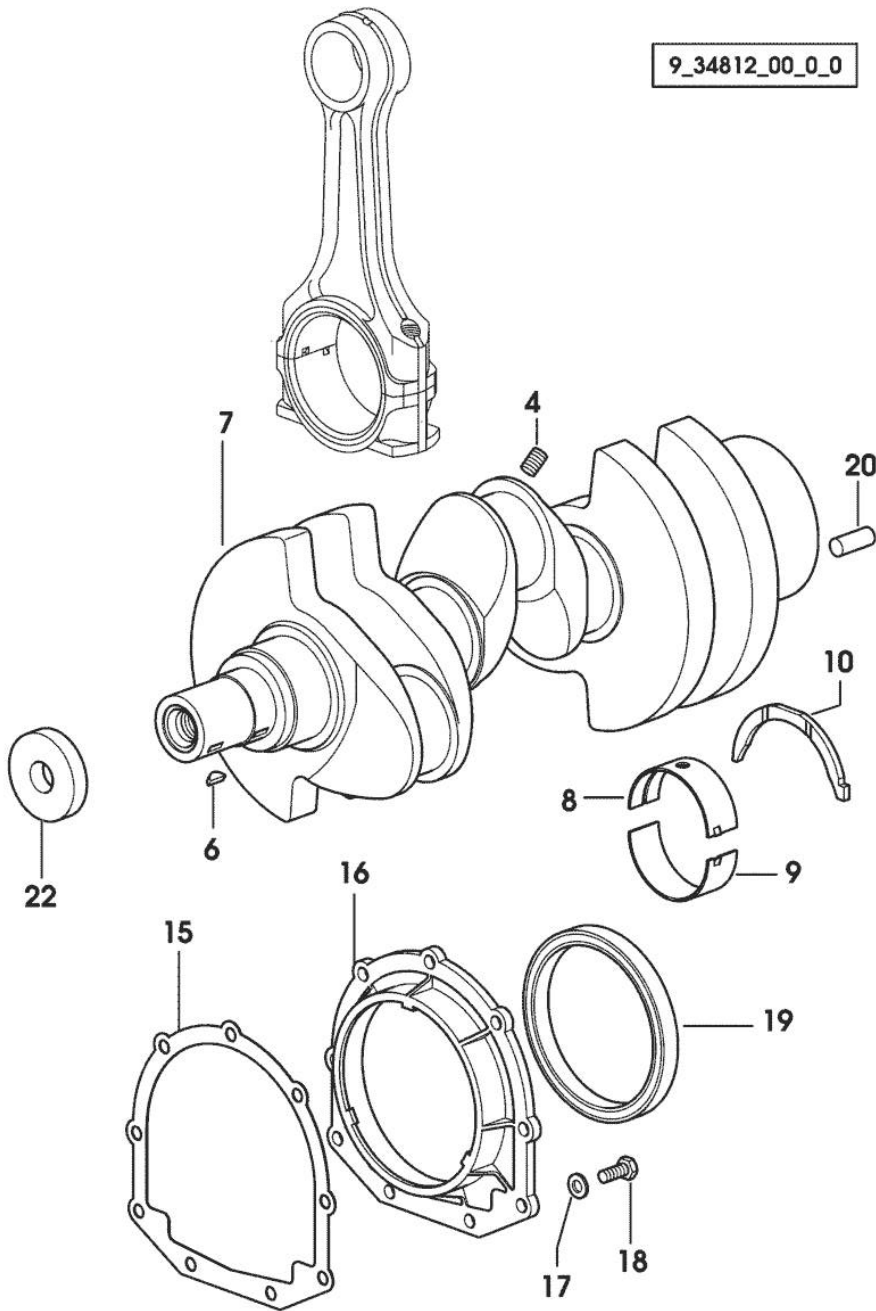
Section: ENGINE
CRANKSHAFT

9_34812_00_0_0

| Fig. | P/n | QTY | Name |
|------|-----|-----|------|
|------|-----|-----|------|

Notes:
 [H-355 F-XE]

| | | | |
|----|-----------------|---|-----------------------------|
| 4 | 2.3130.001.1 | 3 | plug 1/8" gas |
| 6 | 2.1720.006.0 | 2 | key 4x6.5 |
| 7 | 0.007.1554.0/20 | 1 | crankshaft |
| 8 | 0.065.1215.0 | 4 | main half bushing STANDARD |
| 8 | 0.065.1215.7 | | main half bushing - mm 0.25 |
| 8 | 0.065.1215.8 | | main half bushing - mm 0.50 |
| 9 | 0.065.1216.0 | 4 | main half bushing |
| 9 | 0.065.1216.7 | | main half bushing - mm 0.25 |
| 9 | 0.065.1216.8 | | main half bushing - mm 0.50 |
| 10 | 0.065.1218.0 | 4 | shim STANDARD |
| 10 | 0.065.1218.7 | | shim + mm 0.10 |
| 10 | 0.065.1218.8 | | shim + mm 0.15 |
| 15 | 0.065.1254.0/20 | 1 | gasket |
| 16 | 0.007.1711.0/10 | 1 | cover |
| 17 | 2.1475.002.2 | 9 | conical washer 8 |
| 18 | 2.0112.207.2 | 9 | screw m 8 p 1.25 x 20 |
| 19 | 2.1529.073.0 | 1 | special oil seal 110x130x13 |
| 20 | 2.1651.915.0 | 1 | pin 12x35 |
| 22 | 2.1599.524.7 | 1 | washer 21x60x12 |



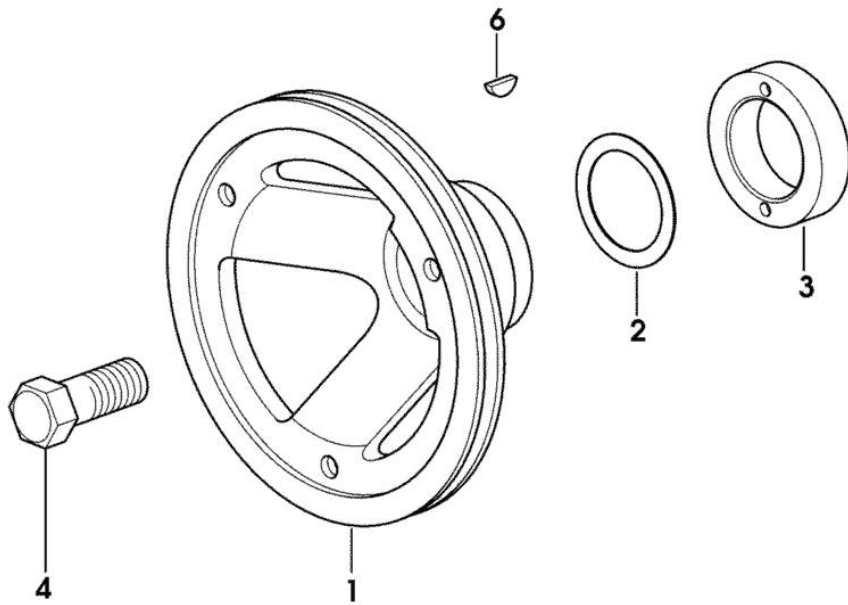
Section: ENGINE

CRANKSHAFT PULLEY

| Fig. | P/n | QTY | Name |
|------|-----|-----|------|
|------|-----|-----|------|

Notes:
[H-355 F-XE]

| | | | |
|---|-----------------|---|-----------------------|
| 1 | 0.007.1330.0/30 | 1 | pulley |
| 2 | 2.1589.189.0 | 2 | shoulder ring mm 1.00 |
| 3 | 0.085.1248.0/10 | 1 | hub |
| 4 | 2.0399.144.7/10 | 1 | screw m 20 p.1.5x51 |
| 6 | 2.1720.006.0 | 1 | key 4x6.5 |



9_33012_02_0_0

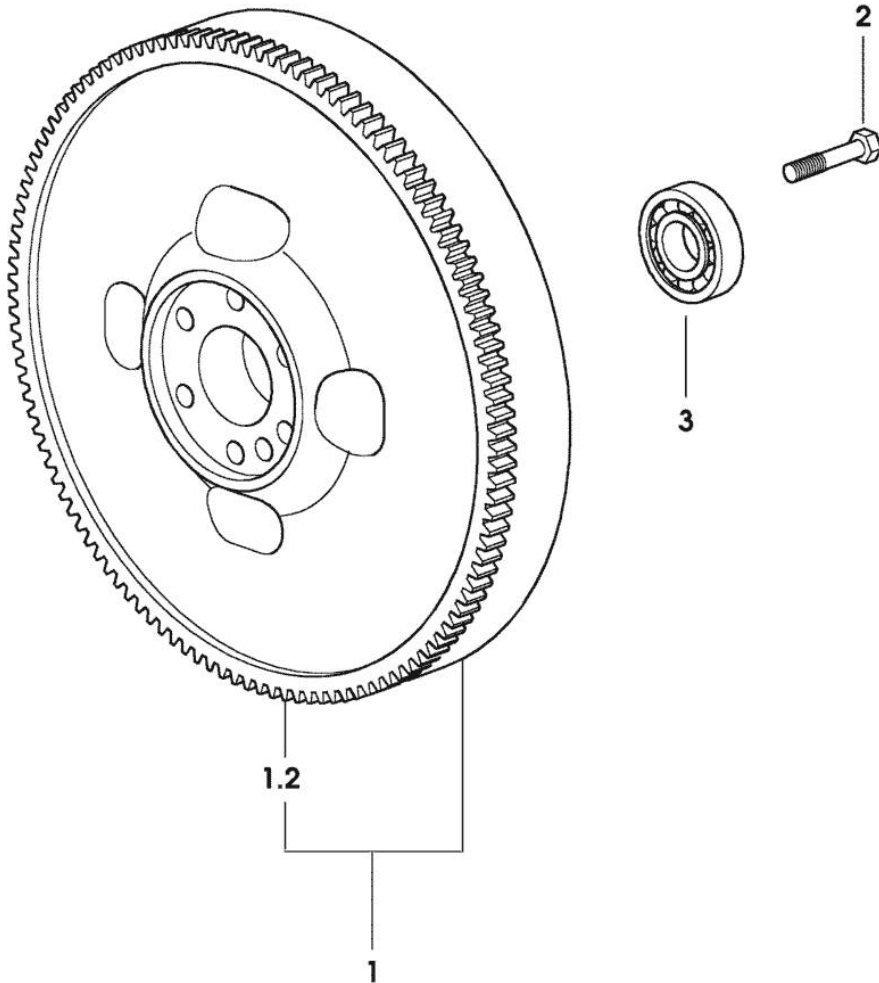
Section: ENGINE

FLYWHEEL

| Fig. | P/n | QTY | Name |
|------|-----|-----|------|
|------|-----|-----|------|

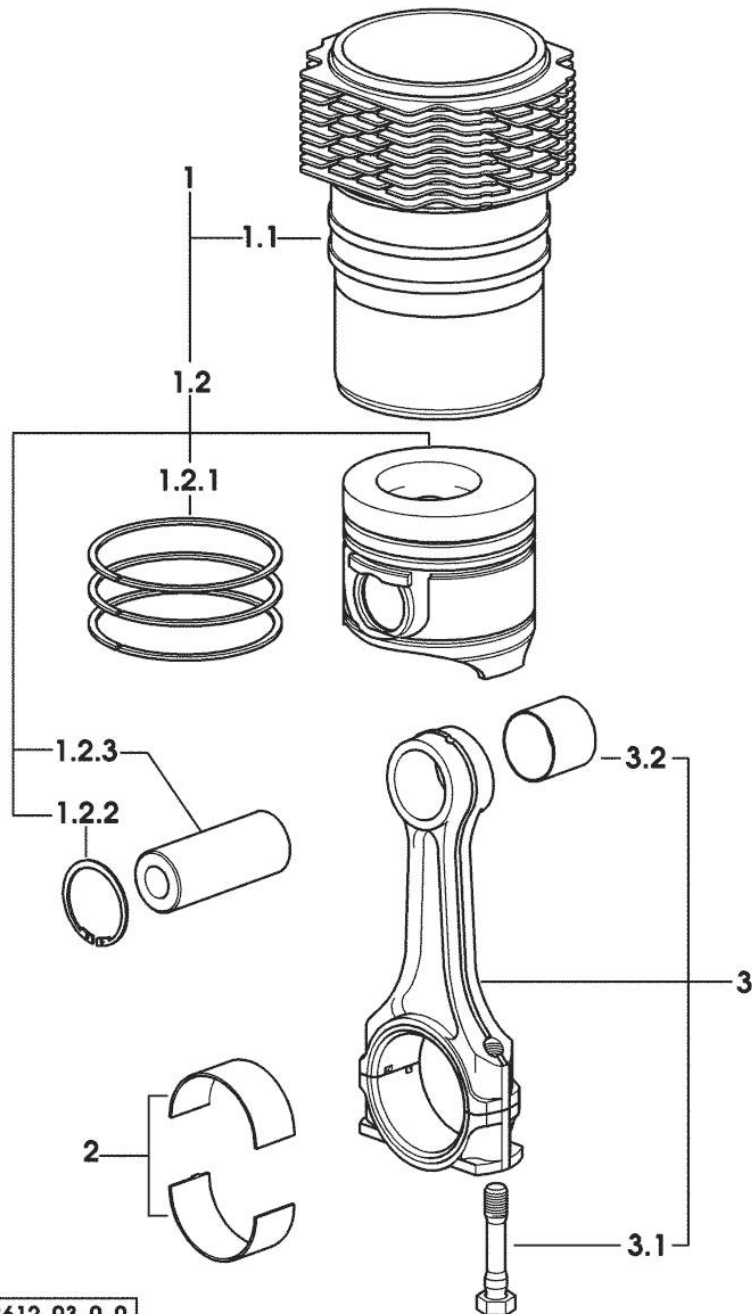
Notes:
[H-355 F-XE]

| | | | |
|-----|-----------------|---|-----------------------|
| 1 | 0.007.1617.3/30 | 1 | flywheel |
| 1.2 | 0.069.1242.0 | 1 | crown wheel Z = 121 |
| 2 | 2.0119.174.0/10 | 6 | screw m 12 p.1.25x45 |
| 3 | 2.2041.008.0 | 1 | ball bearing 20x47x14 |



9_31112_02_0_0

Section: ENGINE

CYLINDER - PISTON - CONNECTING ROD

| Fig. | P/n | QTY | Name |
|------|-----|-----|------|
|------|-----|-----|------|

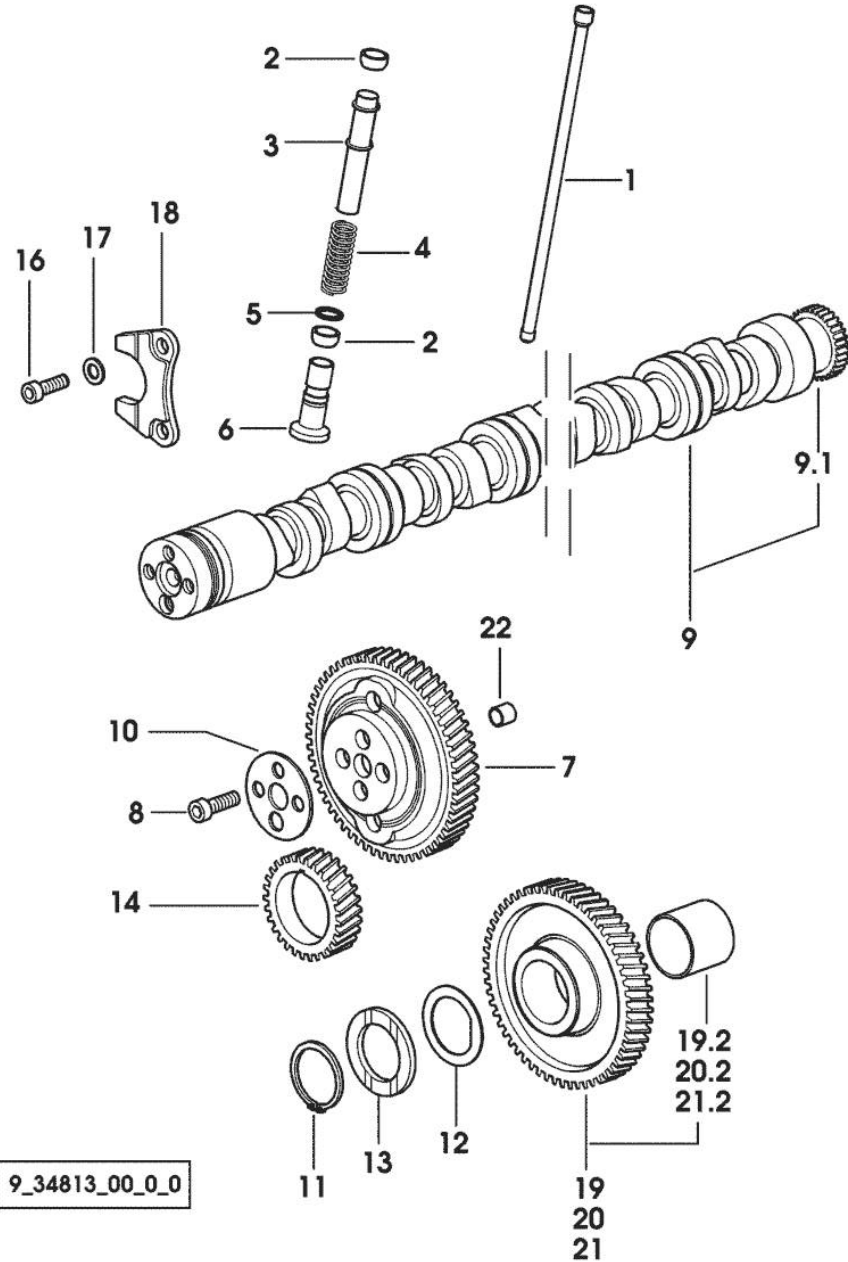
Notes:

[H-355 F-XE]

| | | | |
|-------|-----------------|---|---|
| 1 | 0.379.0065.A | 3 | cyl. piston assembly "A" - CLASS A |
| 1 | 0.379.0065.B | 3 | cyl. piston assembly "B" - CLASS B |
| 1.1 | 0.007.0762.0/50 | 1 | engine cylinder 30845 <= X H-355 F-XE 2115 <= X H-365 F-XE |
| 1.1 | 0.A13.0355.0 | 1 | engine cylinder "A" => 30846 X H-355 F-XE => 2116 X H-365 F-XE - CLASS A |
| 1.1 | 0.B13.0355.0 | 1 | engine cylinder "B" => 30846 X H-355 F-XE => 2116 X H-365 F-XE - CLASS B |
| 1.2 | 0.379.0060.6/10 | 1 | complete piston 30845 <= X H-355 F-XE 2115 <= X H-365 F-XE |
| 1.2 | 0.379.0060.A | 1 | complete piston "A" => 30846 X H-355 F-XE => 2116 X H-365 F-XE - CLASS A |
| 1.2 | 0.379.0060.B | 1 | complete piston "B" => 30846 X H-355 F-XE => 2116 X H-365 F-XE - CLASS B |
| 1.2.1 | 0.086.0052.6/10 | 1 | piston ring set |
| 1.2.2 | 2.1411.014.1 | 2 | circlip 35 |
| 1.2.3 | 0.078.1236.0 | 1 | piston pin Ø 18 / Ø 35 / L = mm 86 |
| 2 | 0.065.1225.0 | 6 | con.rod half bushing STANDARD - A = 28.75 -> 29.00 |
| 2 | 0.065.1225.7 | 6 | con.rod half bushing - mm 0.25 |
| 2 | 0.065.1225.8 | 6 | con.rod half bushing - mm 0.50 |
| 3 | 0.078.1220.3/30 | 3 | engine connecting rod |
| 3.1 | 2.0399.213.0 | 2 | screw m 12 p.1.25x61.5 |
| 3.2 | 2.1559.114.0/10 | 1 | special bushing |

Section: ENGINE

CAMSHAFT



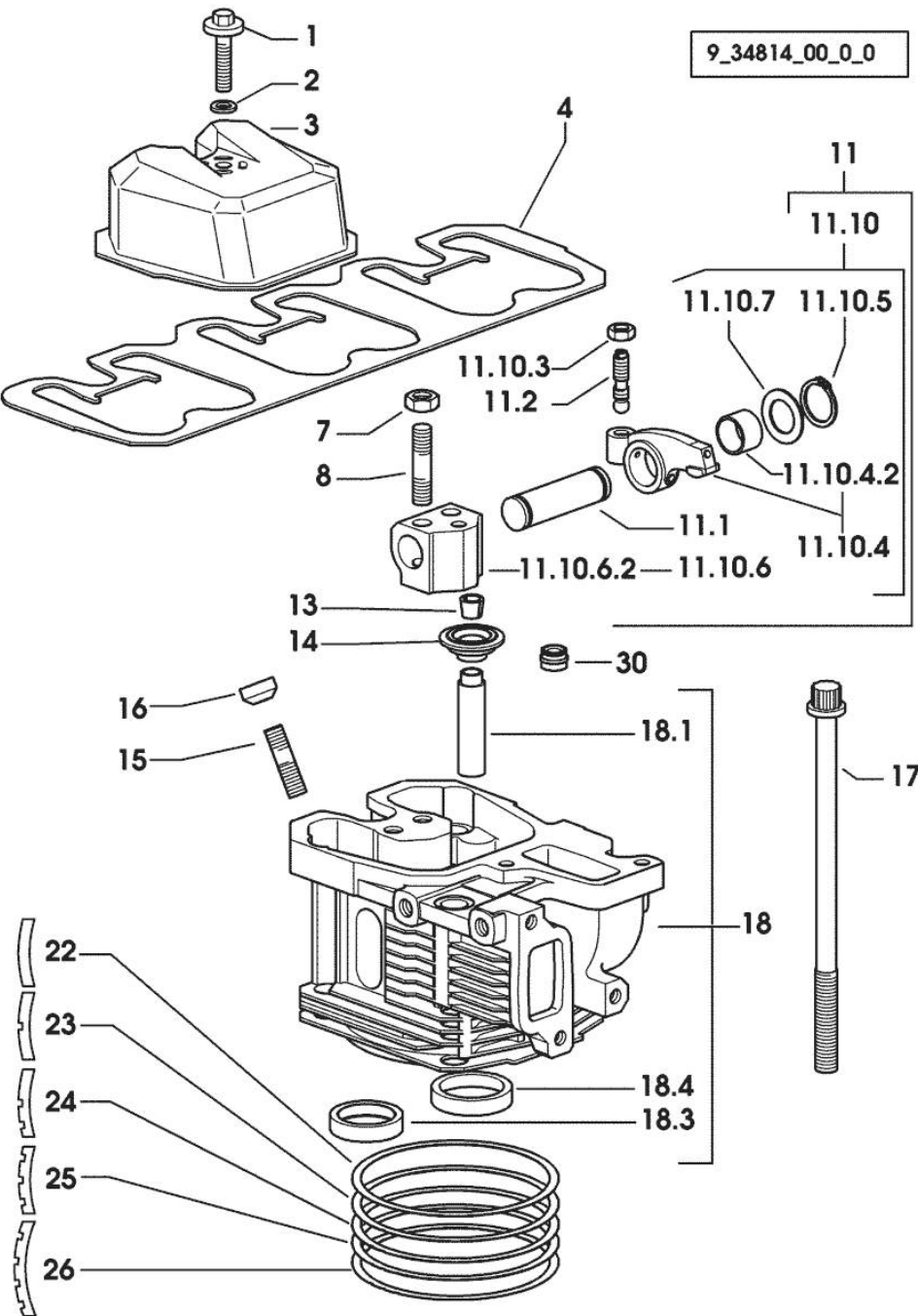
9_34813_00_0_0

| Fig. | P/n | QTY | Name |
|------|-----|-----|------|
|------|-----|-----|------|

Notes:
[H-355 F-XE]

| | | | |
|------|-----------------|----|--|
| 1 | 0.065.1331.2 | 6 | rod |
| 2 | 2.1569.114.0/10 | 12 | gasket 14x18.5x8 |
| 3 | 0.065.1332.0 | 6 | sleeve |
| 4 | 2.4019.300.1/10 | 6 | spring 18.5x52x2 |
| 5 | 2.1599.437.0 | 6 | shoulder ring |
| 6 | 0.065.1330.0 | 6 | tappets |
| 7 | 0.065.1354.0/20 | 1 | gear z=58 |
| 8 | 2.0132.207.2 | 4 | screw m 10 p.1 x 25 |
| 9 | 0.070.1310.3/40 | 1 | camshaft |
| 9.1 | 0.065.1324.0/10 | 1 | gear Z = 32 |
| 10 | 0.065.1350.0 | 1 | small disc |
| 11 | 2.1410.016.1 | 1 | circlip 40 |
| 12 | 0.065.1352.0 | 1 | shim |
| 13 | 0.065.1351.0 | 2 | shoulder ring |
| 14 | 0.065.1323.0/30 | 1 | gear Z = 29 |
| 16 | 2.0312.205.2 | 2 | screw |
| 17 | 2.1480.014.1 | 2 | washer 8 |
| 18 | 0.065.1353.0 | 1 | small plate |
| 19 | 0.007.1177.3/20 | | gear z = 57 - WITH RED IDENTIFICATION STAMP |
| 19.2 | 2.1559.185.0/10 | 1 | bushing gear z = 57 |
| 20 | 0.007.1178.3/20 | | - WITH YELLOW IDENTIFICATION STAMP |
| 20.2 | 2.1559.185.0/10 | 1 | bushing |
| 21 | 0.007.1179.3/20 | 1 | gear z = 57 - WITH GREEN IDENTIFICATION STAMP |
| 21.2 | 2.1559.185.0/10 | 1 | bushing |
| 22 | 2.1559.398.0 | 1 | bushing 10.5x13x12 |

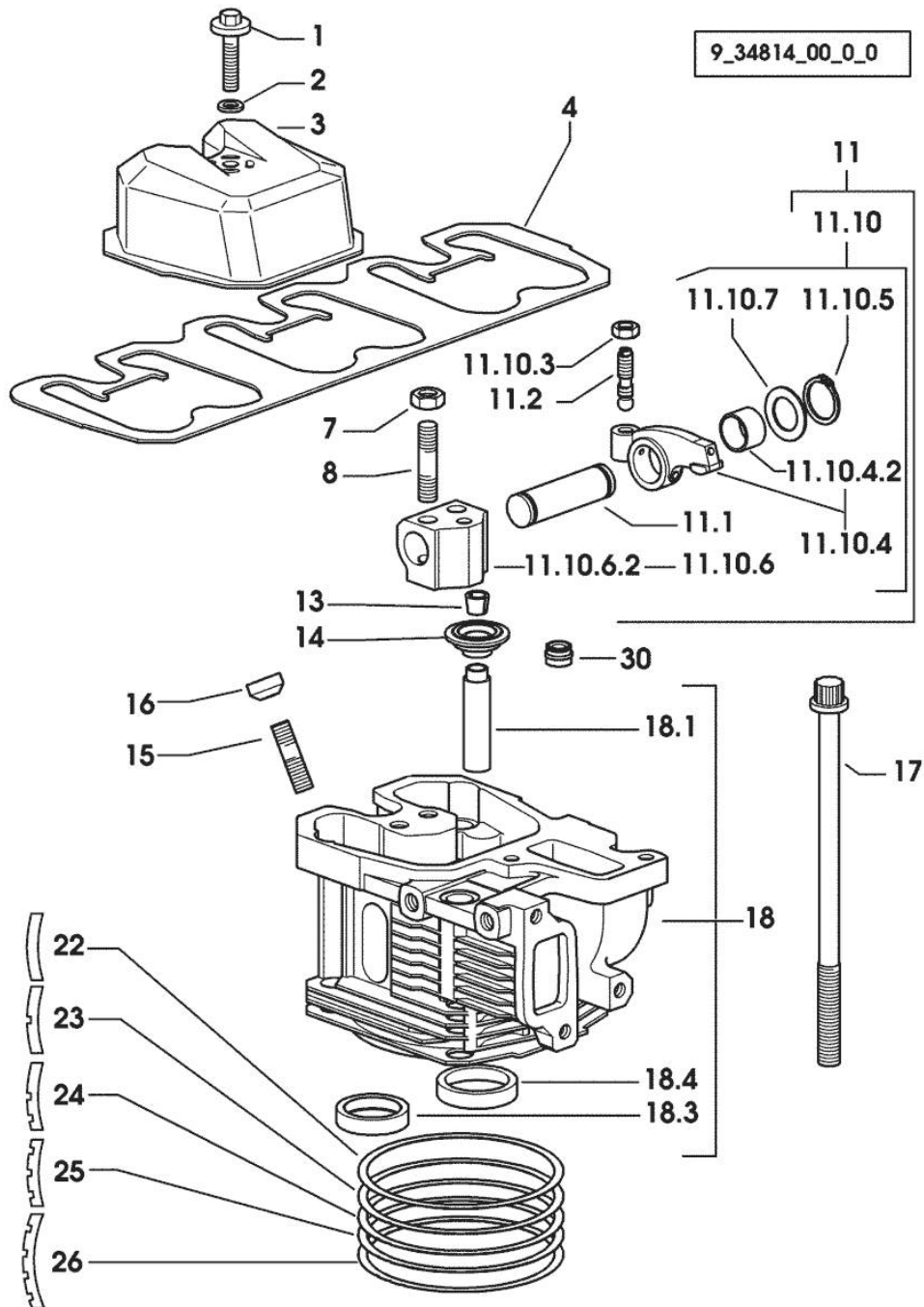
Section: ENGINE
CYLINDER HEAD



| Fig. | P/n | QTY | Name |
|-------------------------------|-----------------|-----|--|
| Notes: [H-355 F-XE] | | | |
| 1 | 2.0399.130.2/10 | 3 | screw m 8x36x44 50050 <- X H-355 F-XE 50007 <- X H-365 F-XE |
| 1 | 2.0399.288.2/10 | 3 | screw m 8x36x46 -> 50051 X H-355 F-XE -> 50008 X H-365 F-XE |
| 2 | 2.1539.151.0 | 3 | special oil seal 9.19 x 2.62 -> 50051 X H-355 F-XE -> 50008 X H-365 F-XE |
| 2 | 2.1569.170.0/10 | 3 | gasket 8.2 x 14 50050 <- X H-355 F-XE 50007 <- X H-365 F-XE |
| 3 | 0.007.1139.0/10 | 3 | small cap |
| 4 | 0.069.1450.0/30 | 1 | tappet gasket |
| 7 | 2.1011.421.2 | 6 | nut m 10 p.1.25 |
| 8 | 2.0432.163.7 | 6 | stud bolt m 10 p.1.5 / p.1.25 x 45 |
| 11 | 0.000.0000.1 | | cannot be supplied |
| 11.1 | 0.066.1431.0 | 1 | pin |
| 11.2 | 0.021.1434.0 | 2 | screw |
| 11.10 | 0.000.0000.1 | | cannot be supplied |
| 11.10.3 | 2.1011.405.2 | 2 | nut m 8 p.1 |
| 11.10.4 | 0.066.1432.3 | 2 | rocker arm |
| 11.10.4.2 | 2.1559.021.0/40 | 1 | bushing 15x19x22 |
| 11.10.5 | 2.1410.055.7 | 2 | circlip 19 |
| 11.10.6 | 0.000.0000.1 | | cannot be supplied |
| 11.10.6.2 | 0.066.1430.0/10 | 1 | support |
| 11.10.7 | 2.1599.432.0 | 2 | shoulder ring |
| 13 | 0.074.1423.0 | 12 | conical valve cotter |
| 14 | 0.066.1425.0 | 6 | cup |
| 15 | 2.0432.161.7 | 3 | stud bolt m 10 p.1.5 / p.1.25 x 40 |
| 16 | 0.007.1122.0/10 | 3 | bush L = mm 6.4 |
| 17 | 0.065.1443.0/20 | 12 | screw |
| 18 | 0.007.1110.3/60 | 3 | engine head |
| 18.1 | 0.007.1779.0/20 | 2 | valve guide |
| 18.3 | 0.066.1427.0 | 1 | valve seat |
| 18.4 | 0.078.1426.0 | 1 | valve seat |
| 22 | 0.085.1450.0/10 | | head gasket mm 0.50 |
| 23 | 0.085.1451.0/10 | 3 | head gasket mm 0.7 |
| 24 | 0.085.1452.0/10 | 1 | head gasket mm 1.0 |
| 25 | 0.085.1453.0/10 | 1 | head gasket mm 0.8 |
| 26 | 0.013.4598.0 | 3 | head gasket mm 1.3 |

Section: ENGINE
CYLINDER HEAD

9_34814_00_0_0



| Fig. | P/n | QTY | Name |
|------|--------------|-----|------------------|
| 30 | 2.1519.117.0 | 6 | special oil seal |

Section: ENGINE

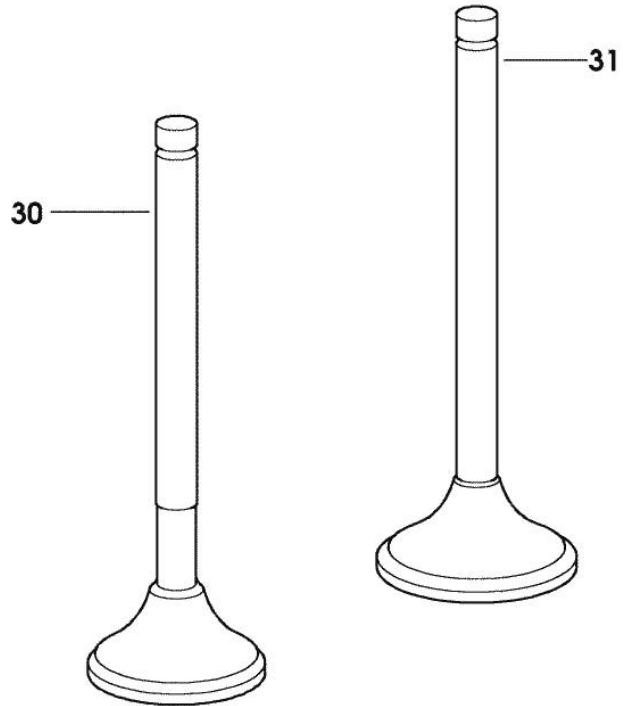
INLET AND EXHAUST VALVES

| Fig. | P/n | QTY | Name |
|------|-----|-----|------|
|------|-----|-----|------|

Notes:

[H-355 F-XE]

| | | | |
|----|--------------|---|-------------------------------|
| 30 | 0.066.1421.0 | 3 | exhaust valve |
| 31 | 0.010.6016.0 | 3 | inlet valve mm 43.63 / Ø mm 9 |



9_34814_02_0_0

Thank you so much for reading.
Please click the “Buy Now!”
button below to download the
complete manual.



After you pay.

You can download the most
perfect and complete manual in
the world immediately.

Our support email:

ebooklibonline@outlook.com