

## Section: ENGINE

## CRANKCASE

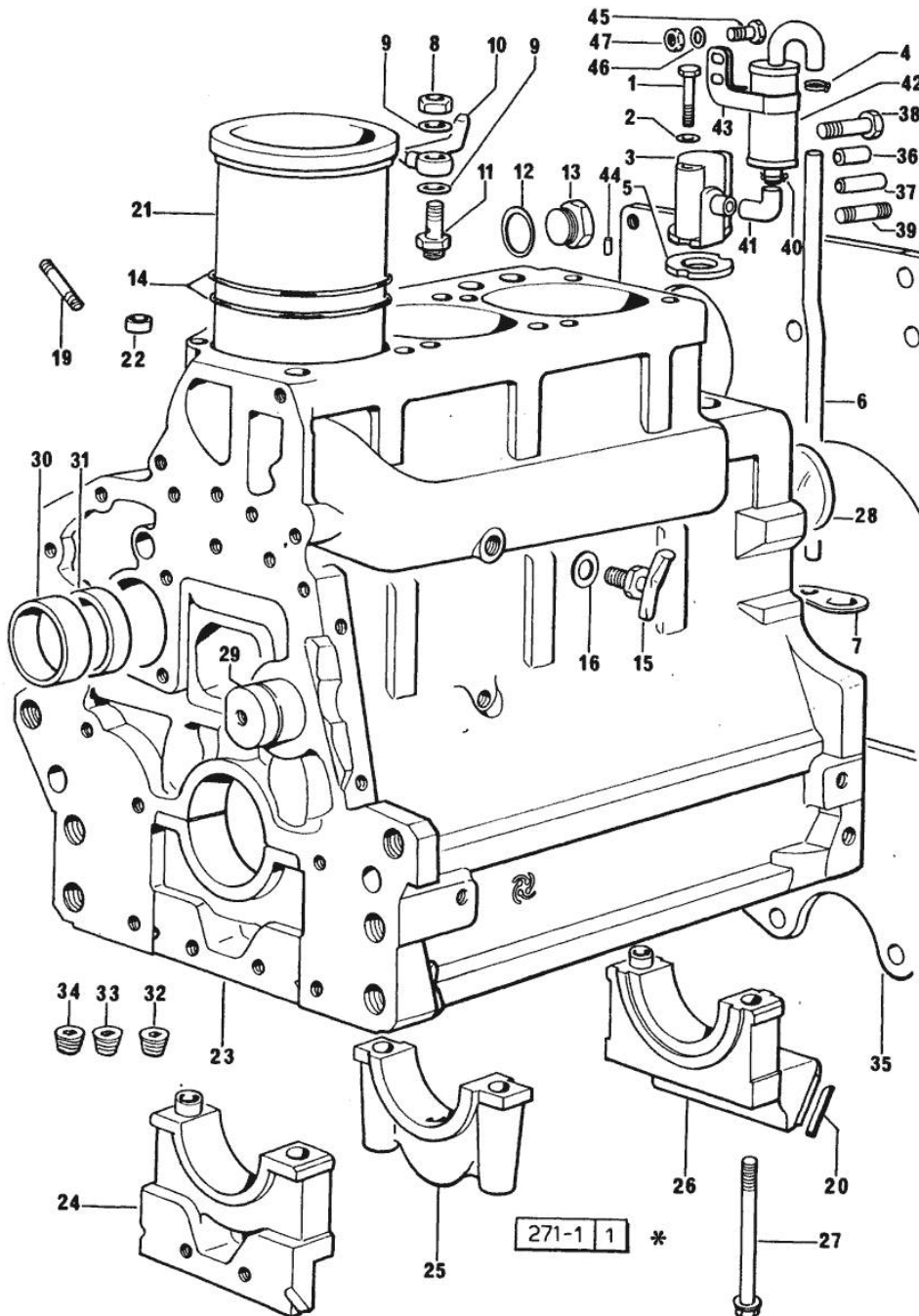


Fig.	P/n	QTY	Name
Notes: [H 356]			
0	0.070.0050.6	1	gasket set FOR INSTALLATION OF ENGINE 916.3 W
0	0.085.0050.6	1	gasket set FOR INSTALLATION OF 1000.3 W ENGINE
1	2.0312.219.2	2	screw m 8 p.1.25x65
2	2.1470.004.2	2	lock washer 8
3	0.065.1143.3	1	body 1110<-
3	0.065.1143.3/10	1	body ->1111 - (...)<-
4	2.6850.006.0	2	clamp 18-28 1110<-
4	2.6859.072.0	1	- ->1111 - (...)<-
5	0.065.1156.0	2	gasket
6	0.065.1155.0	1	old part number 1110<-
6	0.065.1155.0/10	1	tube ->1111 - (...)<-
7	0.065.1157.0	1	bracket
8	2.1099.108.2	3	special nut m 10 p.1
9	2.1560.006.0	6	gasket 10.2 x 16
10	0.086.1550.2	3	sprayer nozzle X 1000.3 W
11	0.065.1160.3/10	3	old part number
12	2.1539.047.0	1	special oil seal 26.7x1.78
13	2.3199.405.2	1	plug m 28 p.1.5
14	2.1519.096.0/10	6	oil seal 107.67x1.78
15	0.049.1152.0	1	cock
16	2.1560.009.0	1	gasket 14.2x18
19	2.0432.003.7	9	stud bolt m 8 p.1.25 / p.1 x 20
20	0.066.1152.0/10	4	gasket
21	0.066.1120.0/10	3	engine cylinder X 916.3 W
21	0.088.1120.0/10	3	engine cylinder X 1000.3 W
22	2.1559.188.0/10	3	bush
23	9.07099.43.3	1	crankcase
24	0.065.1112.7	1	support
24	2.1699.165.0	1	bush 12.3x15x16
25	0.065.1114.7	2	support

Section: ENGINE  
CRANKCASE

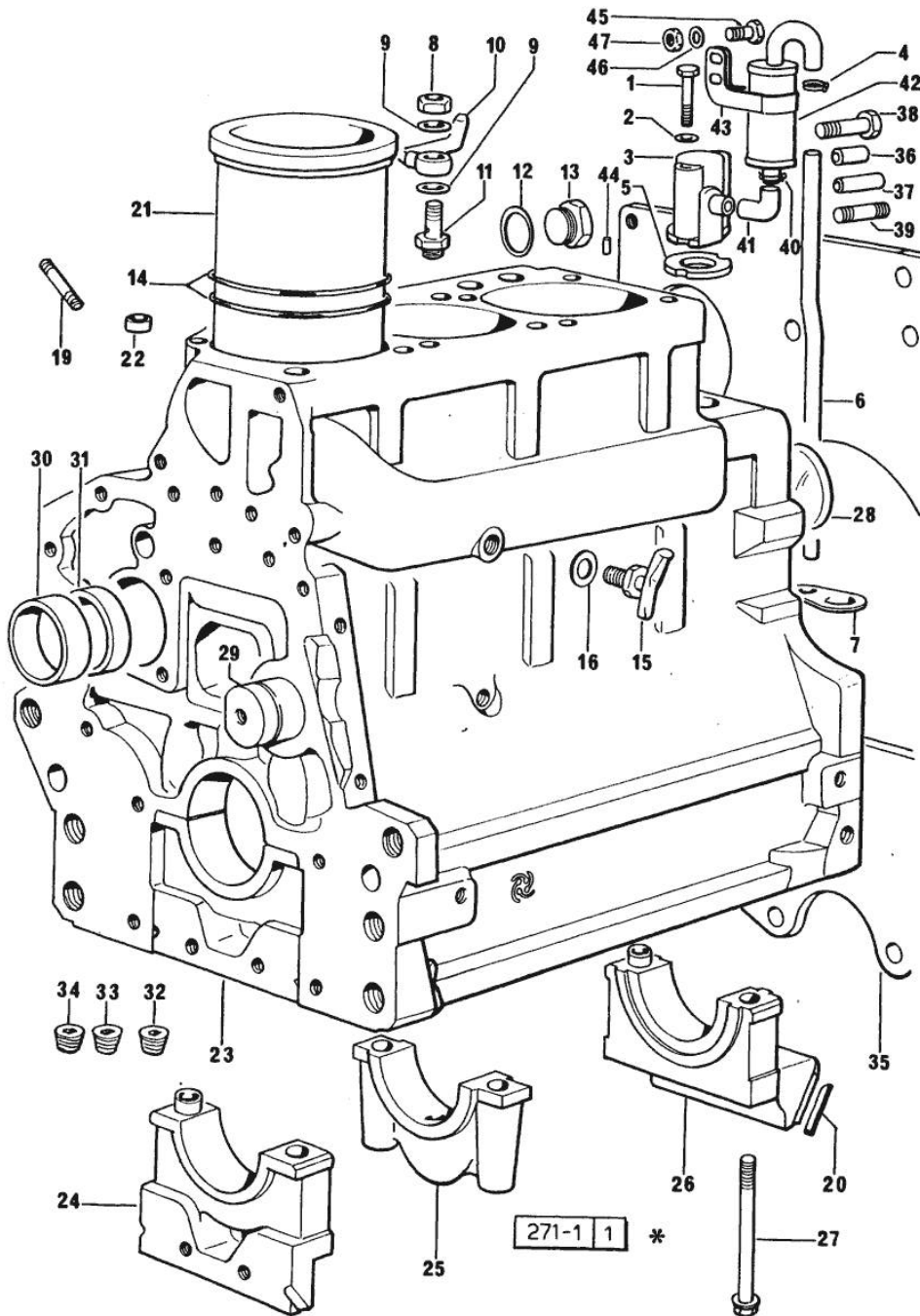


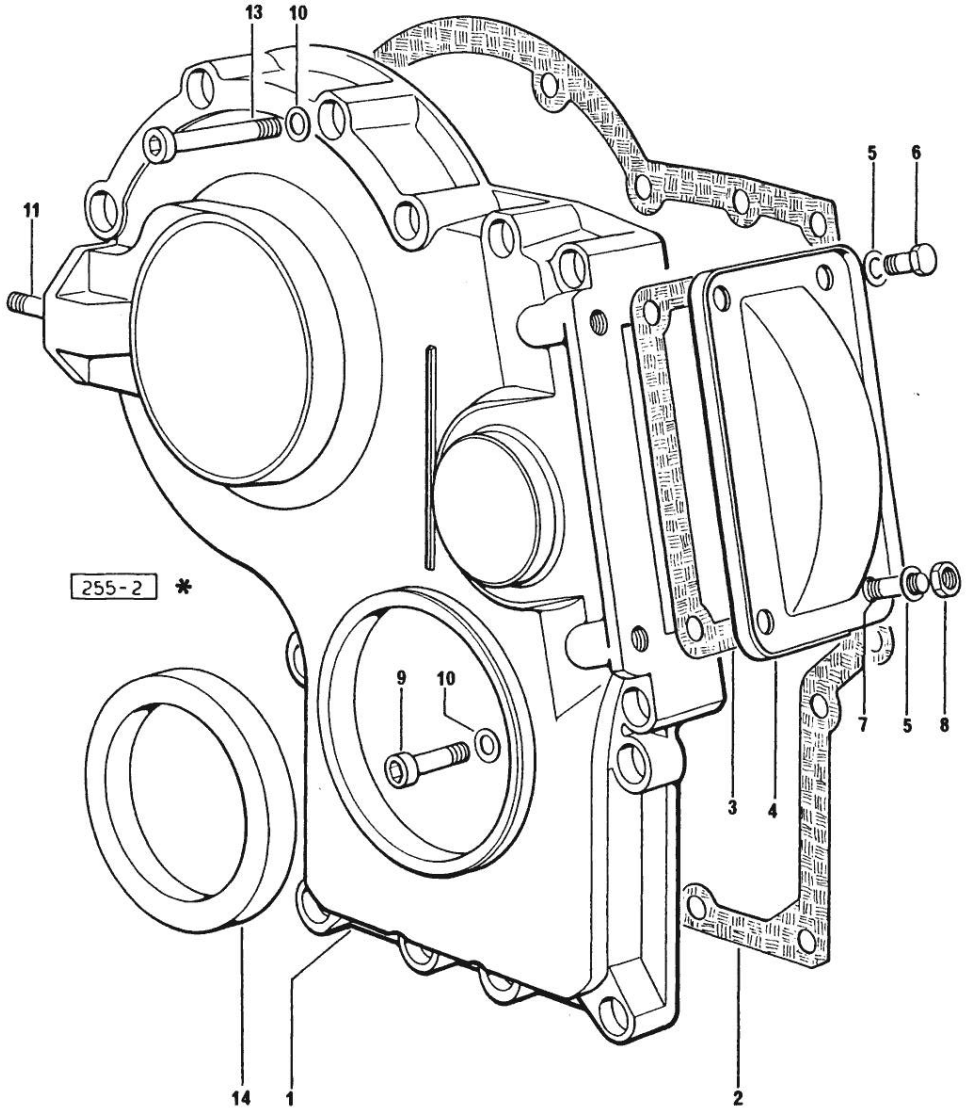
Fig.	P/n	QTY	Name
26	0.065.1116.7	1	support
26	2.1699.165.0	1	bush 12.3x15x16
27	0.065.1117.0	8	screw m 12 x 100
28	2.3179.012.0	1	plug 60
29	0.066.1151.0	1	pin
30	0.065.1141.0	1	special bushing 59X55X30
31	0.065.1140.0	3	special bushing 59X55X20
32	2.3130.001.1	10	plug 1/8" gas
33	2.3130.002.1	2	plug 1/4" gas
34	2.3130.003.1	2	plug 3/8" gas
35	0.066.1130.0	1	flange 1263<=
35	0.066.1130.0/20	1	flange =>1264
36	2.1651.912.0	2	cylindrical plug 12x28
37	2.1651.917.0	2	cylindrical plug 12x40
38	2.0112.511.1	8	screw m 14 p.2 x 30
39	2.0432.255.7	2	stud bolt m 12 p.1.75-1.25x25
40	2.6859.073.2	2	clamp ->1111 - (...)<-
41	0.065.1166.0	1	sleeve ->1111 - (...)<-
42	0.065.1165.2	1	sediment bowl ->1111 - (...)<-
43	2.6859.074.2/10	1	clamp
44	2.1631.205.0	3	roll pin
45	2.0112.004.2	1	screw m 6 p.1 x 14
46	2.1470.002.2	1	lock washer 6
47	2.1011.103.2	1	nut m 6 p.1

Section: ENGINE  
TIMING CASE

Fig.	P/n	QTY	Name
------	-----	-----	------

Notes:  
[H 356]

1	0.065.1132.0/20	1	guard
2	0.065.1150.0/10	1	gasket
3	0.065.1152.0	1	gasket
4	0.065.1151.0	1	cover
5	2.1470.004.2	4	lock washer 8
6	2.0112.205.2	2	screw m 8 p.1.25 x 16
7	2.0432.003.7	2	stud bolt m 8 p.1.25 / p.1 x 20
8	2.1011.405.2	2	nut m 8 p.1
9	2.0312.208.1	8	screw m 8 p.1.25 x 25
10	2.1480.014.1	15	washer 8
11	2.0432.003.7	2	stud bolt m 8 p.1.25 / p.1 x 20
13	2.0312.214.1	7	screw m 8 p.1.25 x 40
14	2.1529.072.0	1	oil seal



Section: ENGINE

**CRANKSHAFT**

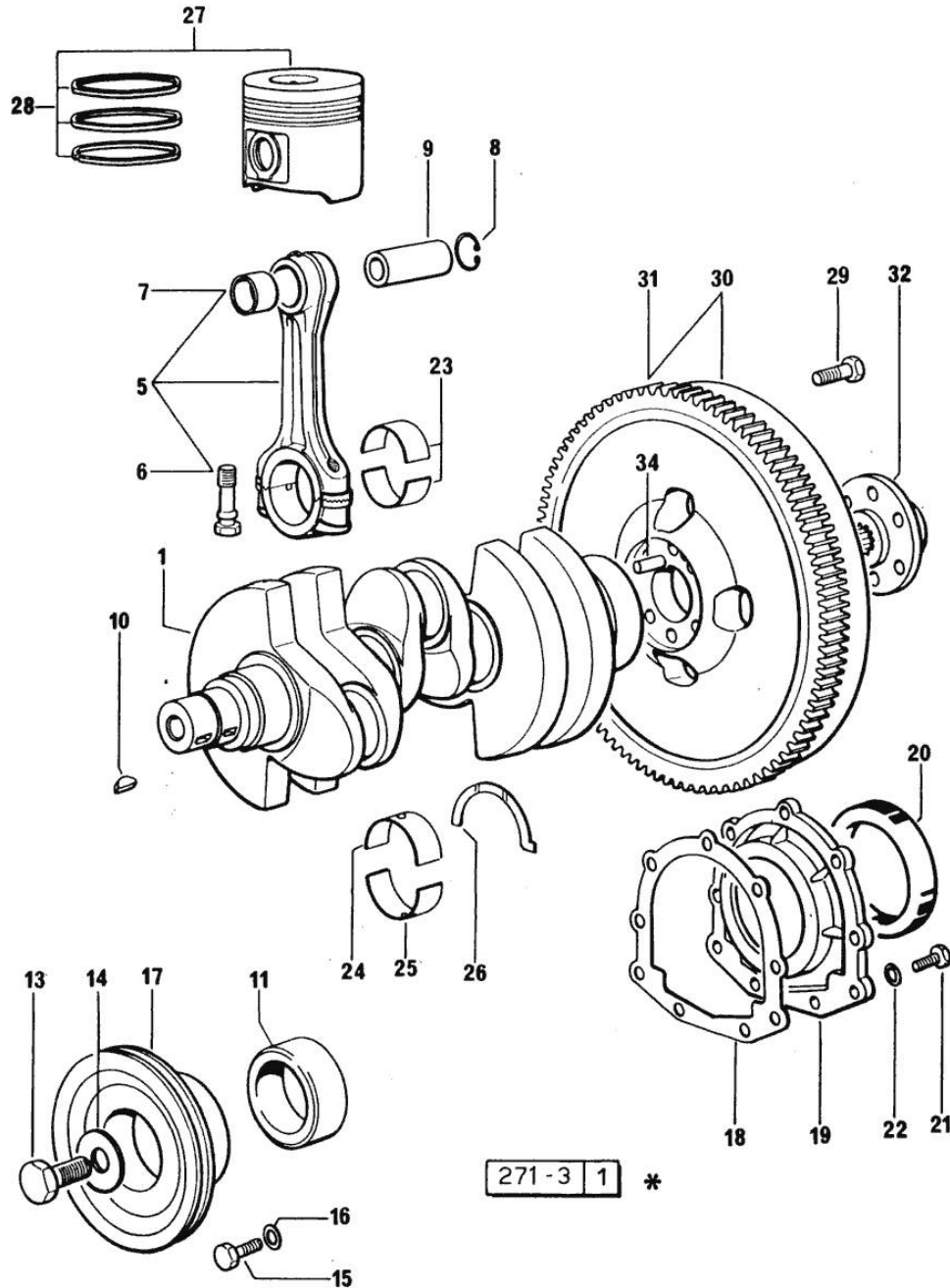


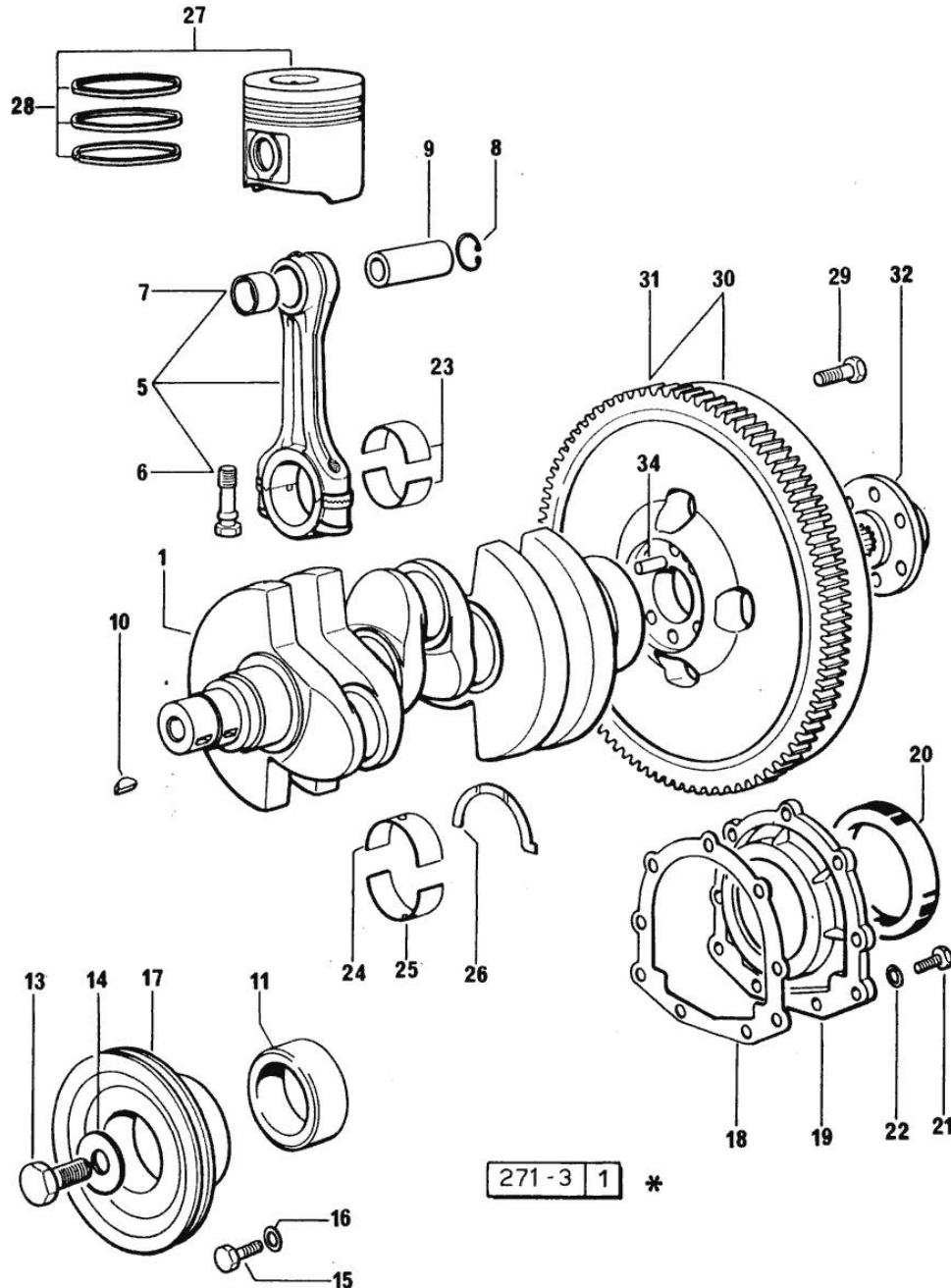
Fig.	P/n	QTY	Name
------	-----	-----	------

Notes:  
[H 356]

1	0.069.1210.3	1	crankshaft X 916.3 W
1	0.085.1210.3/20	1	crankshaft X 1000.3 W
5	0.065.1220.3/10	3	engine connecting rod X 916.3 W
5	0.078.1220.3/10	3	engine connecting rod - X 1000.4 W X 1000.3 W
6	2.0139.021.0	6	screw
7	0.065.1227.0	3	special bushing
7	2.1559.114.0/10	3	special bushing X 1000.3 W
8	2.1411.013.1	8	circlip 32 X 916.3 W
8	2.1411.014.1	8	circlip 35 X 1000.3 W
9	0.065.1236.0	3	piston pin X 916.3 W
9	0.078.1236.0	3	piston pin Ø 18 / Ø 35 / L = mm 86 X 1000.3 W
10	2.1720.006.0	2	key 4x6.5
11	0.065.1248.0/10	1	hub (...)<=
11	0.085.1248.0	1	hub =>(…)
13	2.0399.095.2/10	1	screw (...)<=
13	2.0399.144.7	1	screw m 20 p.1.5x51 =>(…)
14	2.1599.503.2	1	shoulder ring (...)<=
14	2.1599.524.7	1	washer 21x60x12 =>(…)
15	2.0112.320.2	6	screw m 10 p.1.5 x 55
15	2.0112.322.2	6	screw m 10 p.1.5x65
16	2.1470.006.2	6	lock washer 10
17	0.066.1244.0/10	1	pulley =>(…)- (...)<=
17	0.070.1244.0	1	pulley 1343<=
17	0.070.1244.0/10	1	pulley

Section: ENGINE

**CRANKSHAFT**



271-3 1 \*

Fig.	P/n	QTY	Name
17	0.075.1252.0	1	=>1344 - (...)<= pulley 70x188x77,7 - FOR MODELS WITH UNDER ROOF AIR CONDITIONING
17	0.089.1244.0	1	pulley =>(…)
18	0.065.1254.0	1	gasket
19	0.065.1253.0/10	1	cover
20	2.1529.073.0	1	special oil seal 110x130x13
21	2.0112.207.2	9	screw m 8 p 1.25 x 20
22	2.1470.009.2	9	lock washer 16
23	0.065.1225.0	6	con.rod half bushing STANDARD - A = 28.75 -> 29.00
23	0.065.1225.7	6	con.rod half bushing - mm 0.25
23	0.065.1225.8	6	con.rod half bushing - mm 0.50
24	0.065.1215.0	4	main half bushing STANDARD
24	0.065.1215.7	4	main half bushing - mm 0.25
24	0.065.1215.8	4	main half bushing - mm 0.50
25	0.065.1216.0	4	main half bushing
25	0.065.1216.7	4	main half bushing - mm 0.25
25	0.065.1216.8	4	main half bushing - mm 0.50
26	0.065.1218.0	4	shim STANDARD
26	0.065.1218.7	4	shim + mm 0.10
26	0.065.1218.8	4	shim + mm 0.15
27	0.066.0060.6	3	complete piston X 916.3 W
27	0.085.0060.6	3	complete piston X 1000.3 W
28	0.069.0052.6	3	piston ring set X 916.3 W
28	0.086.0052.6	3	piston ring set X 1000.3 W
29	2.0139.022.2	6	screw m 12 p.1.25x55
30	0.065.1247.3	1	flywheel =>(…) - 338<= ORDER ALSO: 1x 0.255.2320.3/10 - 6x 2.0112.207.2 - 6x 2.1474.009.1 - 3x 2.1699.173.0
31	0.065.1242.0	1	crown wheel Z = 123
32	0.255.2525.0/10	1	flange
34	2.1652.915.0	1	cylindrical plug 12x35

Section: ENGINE

**CAMSHAFT**

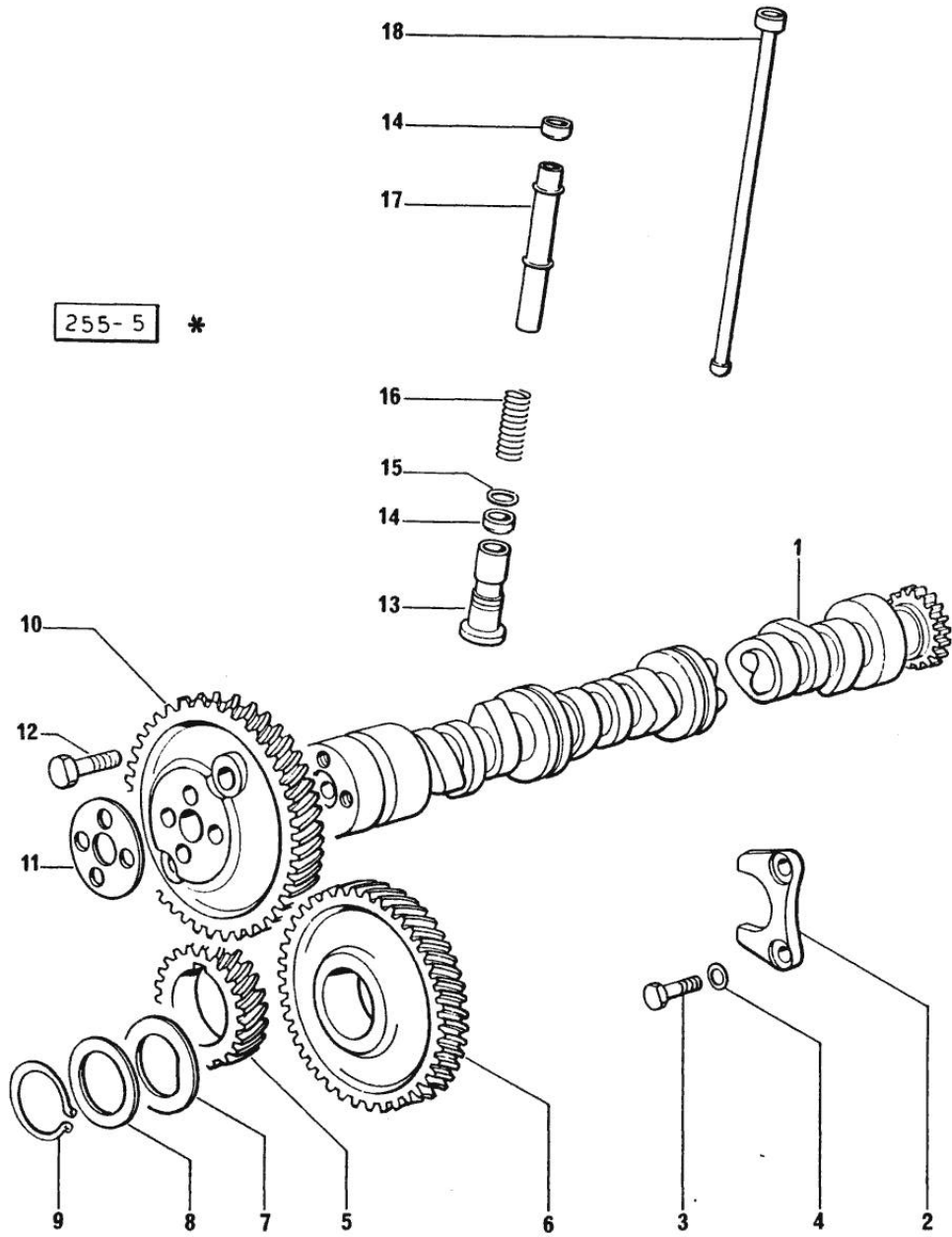


Fig.	P/n	QTY	Name
------	-----	-----	------

Notes:  
[H 356]

1	0.065.1324.0/10	1	gear Z = 32
1	0.070.1310.3/30	1	camshaft
2	0.065.1353.0	1	small plate
3	2.0312.205.2	2	screw
4	2.1480.014.1	2	washer 8
5	0.065.1323.0/20	1	gear Z = 29
6	0.065.1325.3/20	1	gear Z = 57
6	2.1559.185.0/10	1	bushing
7	0.065.1351.0	2	shoulder ring
8	0.065.1352.0	1	shim
9	2.1410.016.1	1	circlip 40
10	0.065.1354.0/10	1	gear z=58
11	0.065.1350.0	1	small disc
12	2.0132.207.2	4	screw m 10 p.1 x 25
13	0.065.1330.0	6	tappets
14	2.1569.114.0	12	gasket
15	2.1599.437.0	6	shoulder ring
16	2.4019.300.1	6	spring
17	0.065.1332.0	6	sleeve
18	0.065.1331.2	6	rod

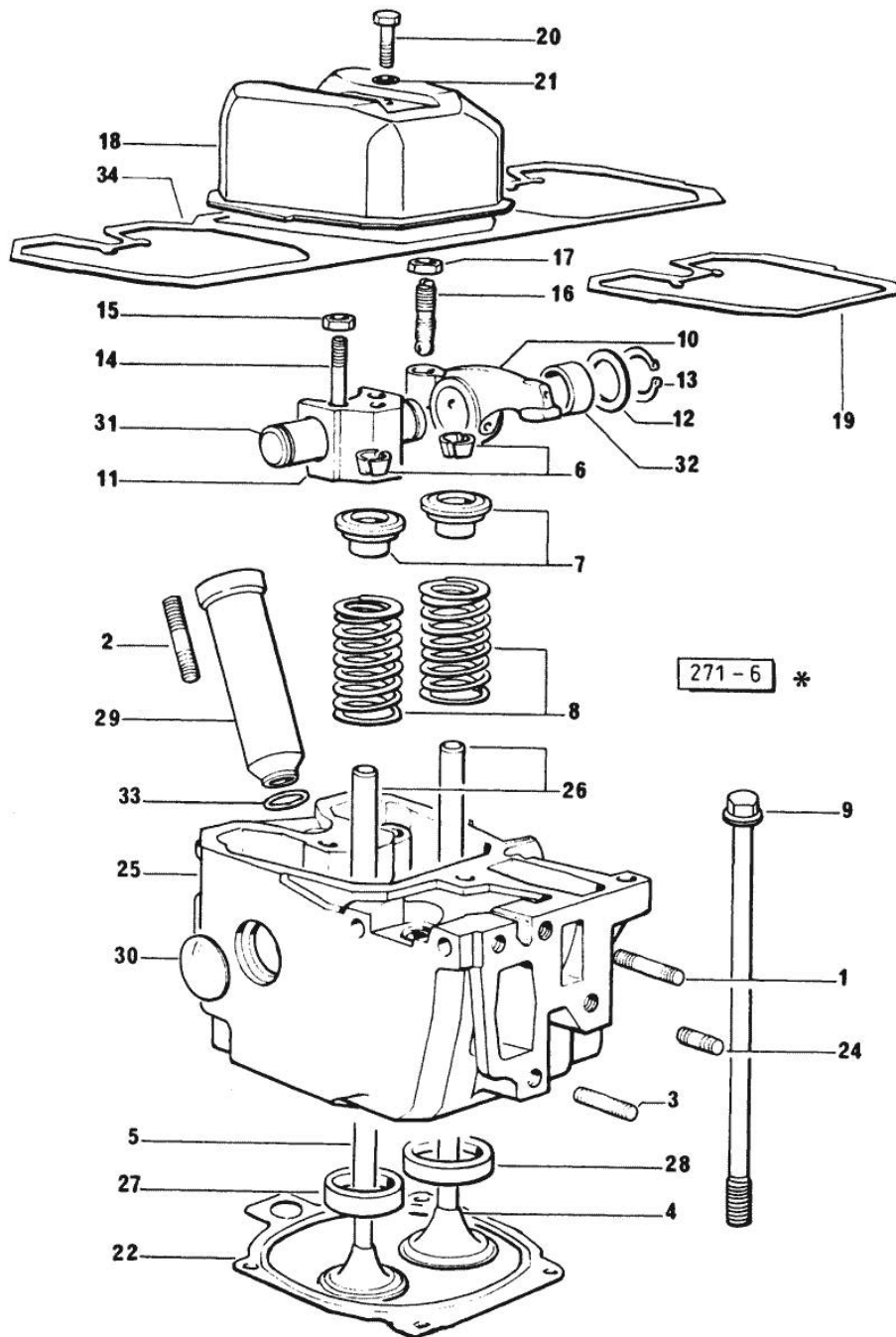
Section: ENGINE  
CYLINDER HEAD

Fig.	P/n	QTY	Name
<b>Notes:</b>			
[H 356]			
1	2.0432.011.7	3	stud bolt m 8 p.1.25 / p.1 x 40
2	2.0432.161.7	3	stud bolt m 10 p.1.5 / p.1.25 x 40
3	2.0432.007.7	8	stud bolt m 8 p.1.25 / p.1 x 30
4	0.066.1420.0	4	inlet valve Ø mm 9 X 916.3 W
4	0.078.1420.0	4	inlet valve X 1000.3 W
5	0.066.1421.0	3	exhaust valve
6	0.074.1423.0	6	conical valve cotter
7	0.066.1425.0	6	cup
8	2.4019.287.0	6	spring
9	0.066.1443.0/10	12	screw
10	0.066.1432.0	6	rocker arm
11	0.066.1430.0	3	support
12	2.1599.432.0	6	shoulder ring
13	2.1410.055.1	6	circlip 19
14	2.0432.163.7	6	stud bolt m 10 p.1.5 / p.1.25 x 45
15	2.1011.421.2	6	nut m 10 p.1.25
16	0.021.1434.0	6	screw
17	2.1011.405.2	6	nut m 8 p.1
18	0.066.1440.0/10	3	small cap
19	0.066.1450.0	3	tappet gasket
20	2.0112.211.2	3	screw m 8 p.1.25 x 30
21	2.1560.204.0	3	gasket
22	0.078.1451.0/30	4	gasket "A" (...) <= ORDER ALSO: 1x 2.1559.188.0
22	0.078.1452.0/20	3	gasket "B" (...) <= ORDER ALSO: 1x 2.1559.188.0
22	0.078.1453.0/30	3	gasket "C" (...) <= ORDER ALSO: 1x 2.1559.188.0
24	2.0432.005.7	3	stud bolt m 8 p.1.5 / p.1 x 25
25	0.066.1410.3/40	3	old part number X 916.3 W
25	0.078.1410.3/40	3	old part number X 1000.3 W
26	0.066.1416.0	6	valve guide
27	0.066.1427.0	3	valve seat
28	0.066.1426.0	3	valve seat
29	0.066.1413.0	3	bush
30	2.3170.012.1	6	expansion plug 30
31	0.066.1431.0	3	pin

Section: ENGINE  
CYLINDER HEAD

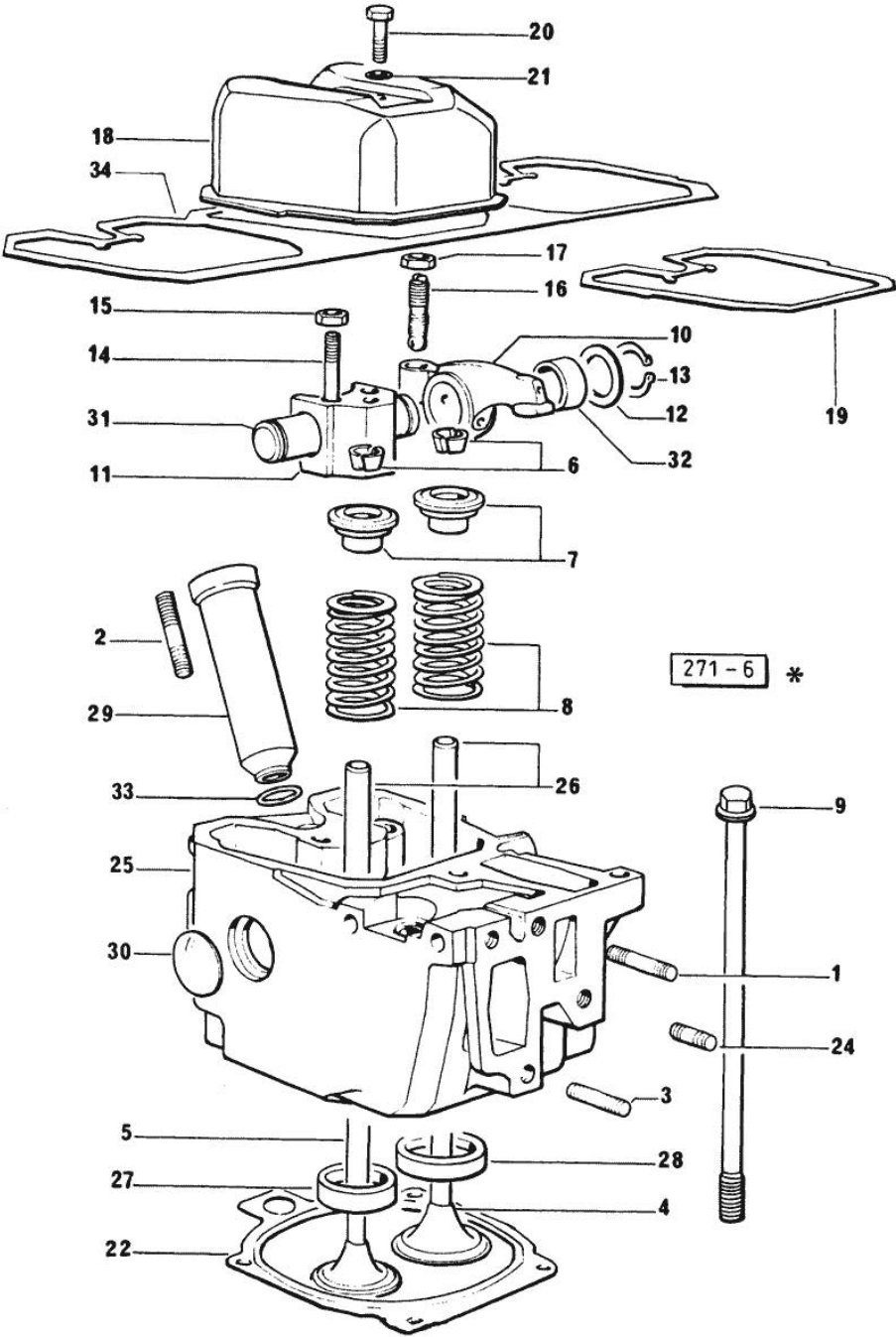


Fig.	P/n	QTY	Name
32	2.1559.021.0/40	8	bushing 15x19x22
33	2.1530.056.0	4	oil seal 21.82 x 3.53
34	0.069.1450.0/10	1	gasket



Section: ENGINE  
LUBRICATION

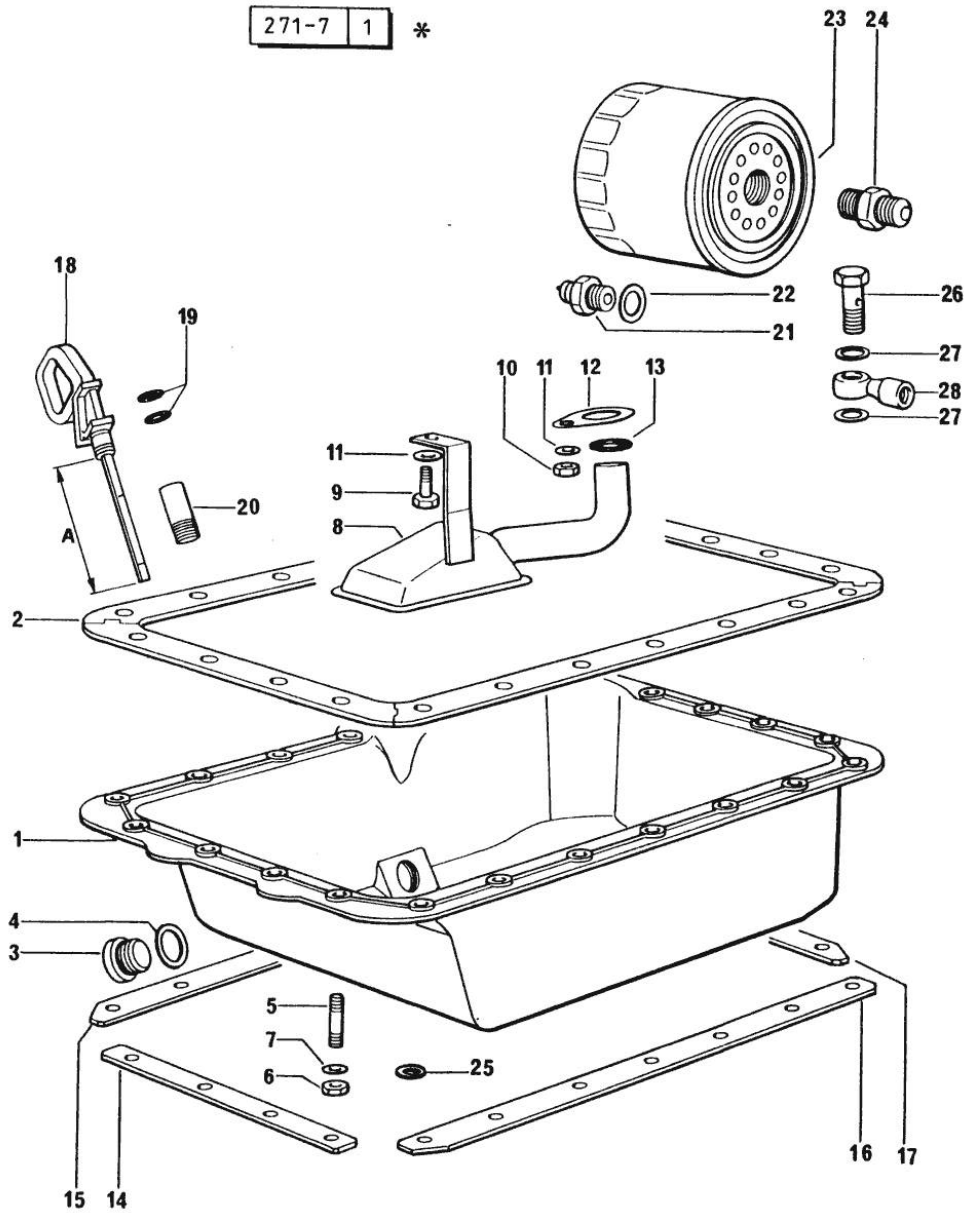
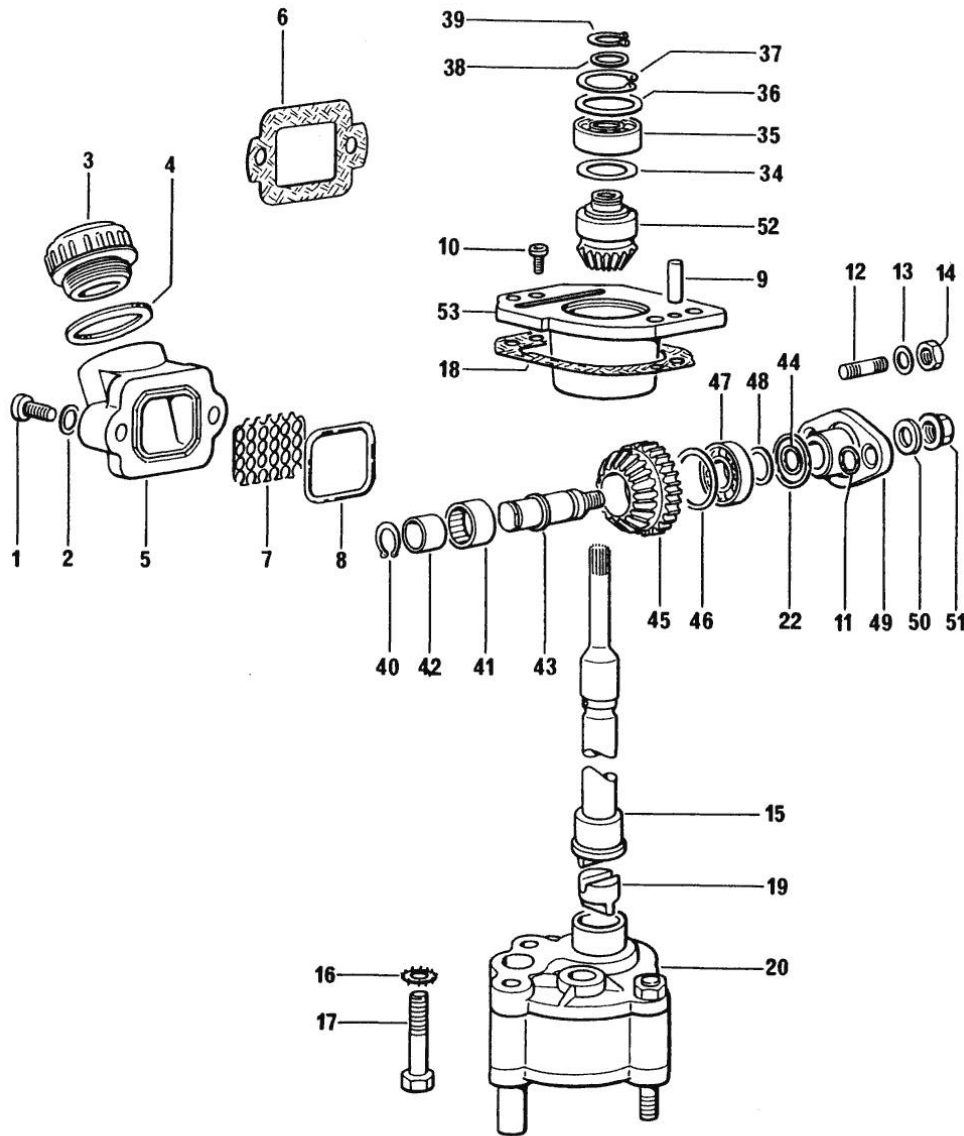


Fig.	P/n	QTY	Name
------	-----	-----	------

Notes:  
[H 356]

1	0.070.1510.2/20	1	oil sump
2	0.070.1551.0	1	gasket
3	2.3199.001.2	1	plug 1/2" gas
4	2.1560.054.0	1	gasket 21 x 26
5	2.0432.003.7	22	stud bolt m 8 p.1.25 / p.1 x 20
6	2.1121.105.2	22	nut m 8 x 1
7	2.1470.004.2	22	lock washer 8
8	0.070.1531.3	1	tube
9	2.0112.205.2	1	screw m 8 p.1.25 x 16
10	2.1011.105.2	1	nut m 8 p.1.25
11	2.1470.004.2	2	lock washer 8
12	0.065.1538.0	1	flange
13	2.1539.040.0	1	special oil seal 21.82 x 3.53
14	0.070.1554.0	1	small plate
15	0.070.1552.0	1	small plate
16	0.070.1553.0	1	small plate
17	0.070.1555.0	1	small plate
18	0.069.1513.2	1	dipstick
18	0.085.1513.2	1	dipstick mm 78
19	2.1539.065.0	2	special oil seal 8.73 x 1.78
20	0.066.1551.0	1	spacer
21	2.3339.359.2	1	pipe fitting
21	2.3339.359.2/10	1	pipe fitting
22	2.1560.008.0	1	gasket 12.2 x 18
23	0.044.1567.0	1	oil filter element
24	2.3339.307.1/20	1	pipe fitting
25	2.1599.459.0	3	small plate
26	2.3339.448.2	1	pipe union m 12 p.1.75
27	2.1560.008.0	2	gasket 12.2 x 18
28	2.3249.014.2	1	pipe fitting m 12 p.1.5

Section: ENGINE  
**LUBRICATION 1211 <=**



291-8 \*

Fig.	P/n	QTY	Name
------	-----	-----	------

Notes:  
 [H 356]

1	2.0312.205.2	2	screw
2	2.1480.014.1	2	washer 8
3	0.041.1135.4	1	plug 1" gas
4	2.1569.072.0	1	gasket 32 x 39.5 x 2
5	0.065.1565.0/10	1	pipe union
6	0.065.1566.0	1	gasket
7	0.065.1567.0/10	1	filter
8	2.1539.042.0	1	special oil seal 47.35x1.78
9	2.1652.711.0	2	cylindrical plug 8x25
10	2.0169.005.2	2	screw m 6 p.1 x 12
11	2.1530.016.0	2	oil seal 8.73 x 1.78
12	2.0439.151.2	2	stud bolt
13	2.1470.004.2	2	lock washer 8
14	2.1011.405.2	2	nut m 8 p.1
15	0.065.1569.0	1	shaft
16	2.1470.006.2	2	lock washer 10
17	2.0112.324.2	2	screw m 10 p.1.5x75
18	0.065.1560.0	1	old part number
19	0.065.1562.0	1	joint
20	9.07599.43.4	1	old part number
22	2.1530.053.0	1	oil seal 20.35x1.78
34	2.1589.148.0	1	shoulder ring 28.2 x 31.8 x 0.5
35	2.2020.001.0	1	ball bearing 15 x 32 x 8.00
36	2.1589.149.0	1	old part number
36	2.1589.150.0	1	shoulder ring 28.2 x 31.8 x 0.1
36	2.1589.151.0	1	shoulder ring 28.2 x 31.8 x 0.15
37	2.1411.013.1	1	circlip 32
38	2.1589.146.0	1	shoulder ring 15.2 x 19 x 0.15
38	2.1589.147.0	1	shoulder ring 15.2 x 19 x 0.10
38	2.1589.153.0	1	shoulder ring 15.2 x 19 x 1.00
39	2.1410.057.1	1	circlip 15
40	2.1410.002.1	1	circlip 12
41	2.2725.016.0	1	roller cage 15 x 21 x 12
42	2.2680.020.0	1	ring 12 x 15 x 12
43	0.065.1564.0	1	pin
44	2.1530.016.0	1	oil seal 8.73 x 1.78
45	0.065.1561.0	1	old part number
46	2.1589.152.0	1	shoulder ring
47	2.2030.002.0	1	ball bearing 12 x 28 x 8
48	2.1589.143.0	1	shoulder ring mm 0.5
48	2.1589.144.0	1	shoulder ring mm 0.15

Section: ENGINE  
LUBRICATION 1211 <=

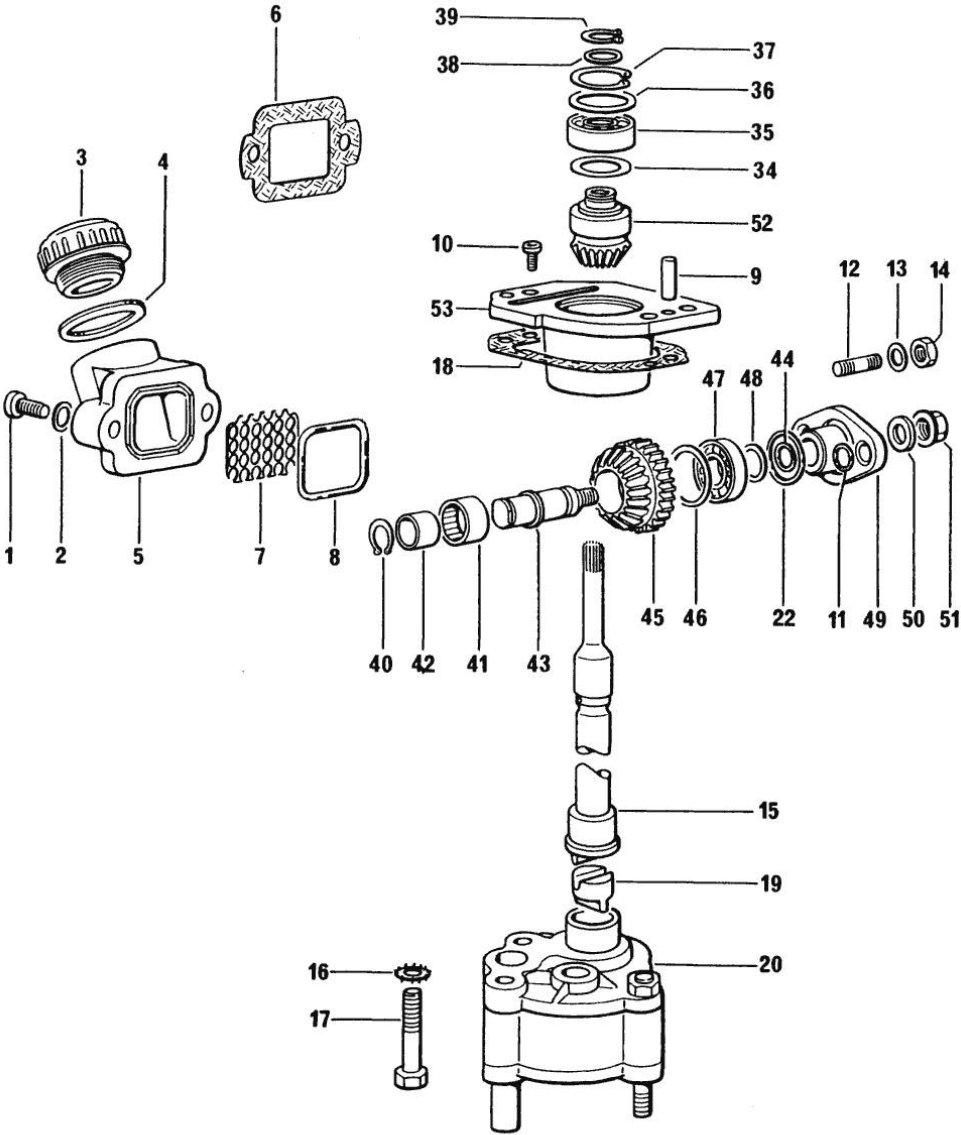


Fig.	P/n	QTY	Name
48	2.1589.145.0	1	shoulder ring mm 0.10
49	0.065.1563.0/10	1	flange
50	2.1599.477.0	1	shoulder ring
51	2.1099.094.0	1	self-locking nut
52	0.065.1558.3	1	old part number
53	0.065.1557.3	1	support

291-8 \*

LUBRICATION - => 1212 (...) <=

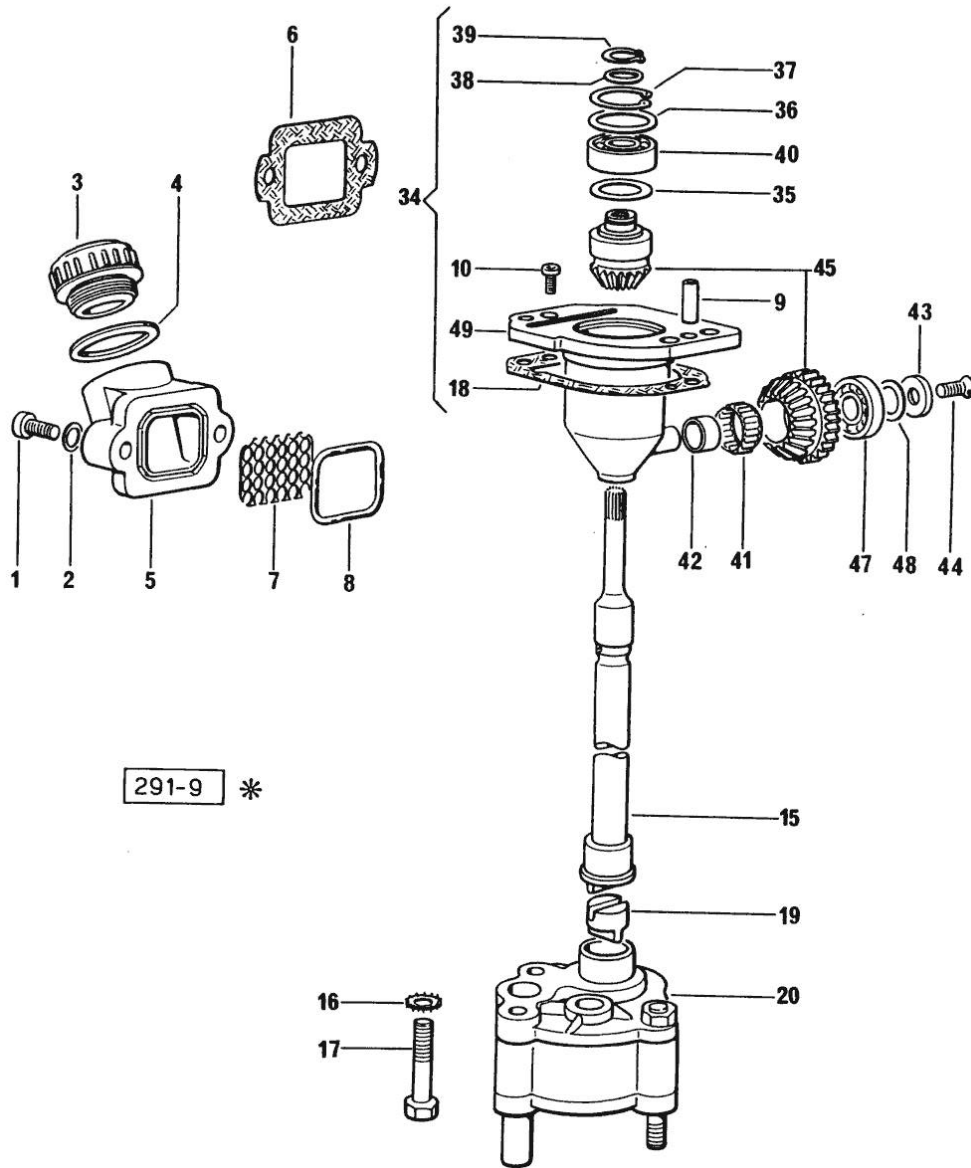


Fig.	P/n	QTY	Name
------	-----	-----	------

Notes:  
[H 356]

1	2.0312.205.2	2	screw
2	2.1480.014.1	2	washer 8
3	0.041.1135.4	1	plug 1" gas
4	2.1569.072.0	1	gasket 32 x 39.5 x 2
5	0.065.1565.0/10	1	pipe union
6	0.065.1566.0	1	gasket
7	0.065.1567.0/10	1	filter
8	2.1539.042.0	1	special oil seal 47.35x1.78
9	2.1652.711.0	2	cylindrical plug 8x25
10	2.0169.005.2	2	screw m 6 p.1 x 12
15	0.065.1569.0	1	shaft
16	2.1470.006.2	2	lock washer 10
17	2.0112.324.2	2	screw m 10 p.1.5x75
18	0.065.1560.0	1	old part number
19	0.065.1562.0	1	joint
20	9.06699.43.3	1	oil pump
34	9.07599.43.3	1	old part number
35	2.1589.148.0	1	shoulder ring 28.2 x 31.8 x 0.5
36	2.1589.149.0	1	old part number
36	2.1589.150.0	1	shoulder ring 28.2 x 31.8 x 0.1
36	2.1589.151.0	1	shoulder ring 28.2 x 31.8 x 0.15
37	2.1411.013.1	1	circlip 32
38	2.1589.146.0	1	shoulder ring 15.2 x 19 x 0.15
38	2.1589.147.0	1	shoulder ring 15.2 x 19 x 0.10
38	2.1589.153.0	1	shoulder ring 15.2 x 19 x 1.00
39	2.1410.057.1	1	circlip 15
40	2.2020.001.0	1	ball bearing 15 x 32 x 8.00
41	2.2725.016.0	1	roller cage 15 x 21 x 12
42	2.2680.020.0	1	ring 12 x 15 x 12
43	2.1599.483.0	1	shoulder ring
44	2.0342.202.2	1	screw
45	0.065.1558.6/10	1	bevel drive
47	2.2030.002.0	1	ball bearing 12 x 28 x 8
48	2.1589.143.0	1	shoulder ring mm 0.5
48	2.1589.144.0	1	shoulder ring mm 0.15
48	2.1589.145.0	1	shoulder ring mm 0.10
49	0.075.1551.3	1	old part number

Section: ENGINE  
LUBRICATION => (...)

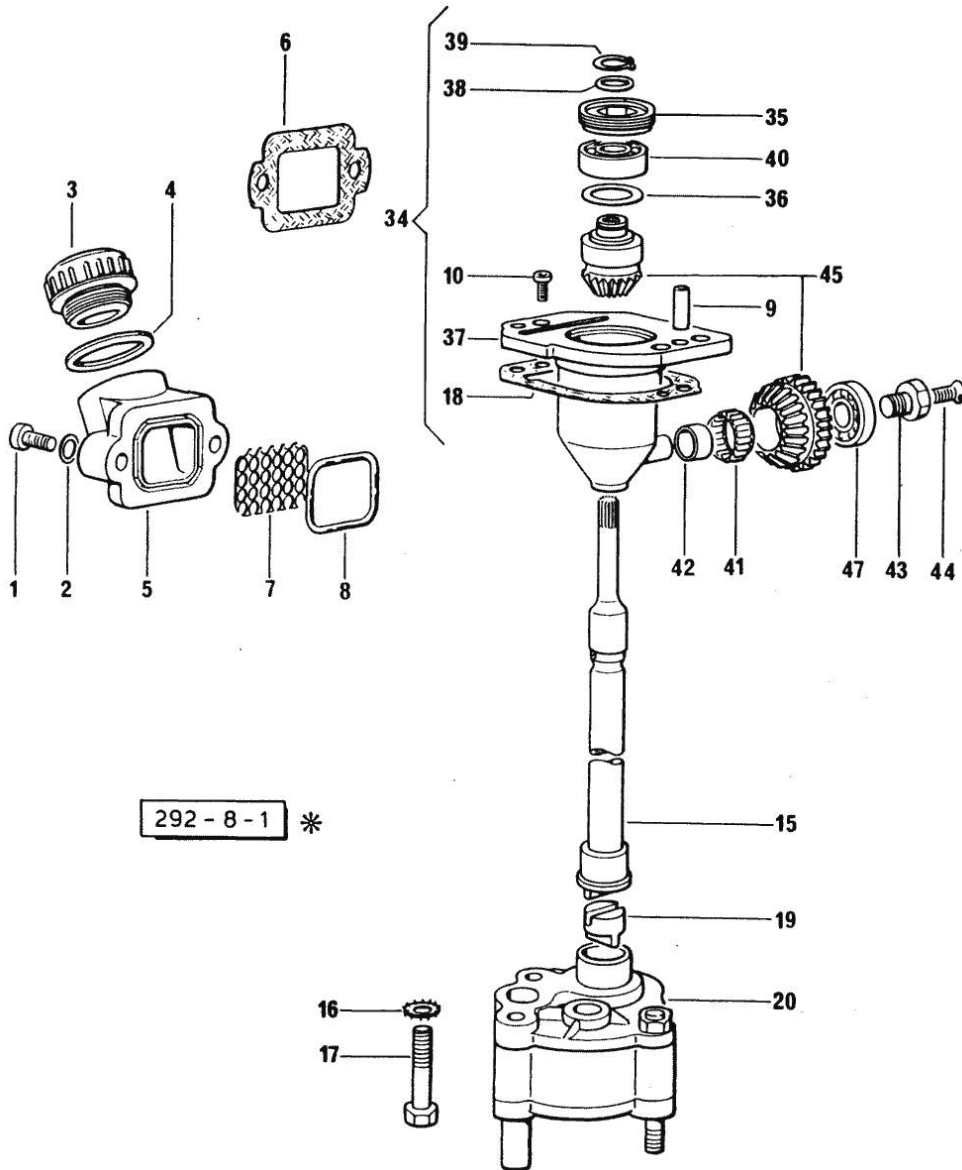


Fig.	P/n	QTY	Name
<b>Notes:</b> [H 356]			
1	2.0312.205.2	2	screw
2	2.1480.014.1	2	washer 8
3	0.041.1135.4	1	plug 1" gas
4	2.1569.072.0	1	gasket 32 x 39.5 x 2
5	0.065.1565.0/10	1	pipe union
6	0.065.1566.0	1	gasket (...)<=
7	0.065.1567.0/10	1	filter
8	2.1539.042.0	1	special oil seal 47.35x1.78
9	2.1652.711.0	2	cylindrical plug 8x25
10	2.0169.005.2	2	screw m 6 p.1 x 12
15	0.065.1569.0	1	shaft
16	2.1470.006.2	2	lock washer 10
17	2.0112.323.2	2	screw m 10 p.1.5x70
18	0.065.1560.0/20	2	gasket
19	0.065.1562.0	1	joint
20	9.06699.43.3	1	oil pump
34	9.07599.43.3	1	old part number
35	2.1219.025.2	1	ring nut m 36 p.1 (...)<=
35	2.1219.025.2/10	1	ring nut m 36 p.1.5 =>(…)
36	2.1589.148.0	1	shoulder ring 28.2 x 31.8 x 0.5
36	2.1589.150.0	1	shoulder ring 28.2 x 31.8 x 0.1
36	2.1589.151.0	1	shoulder ring 28.2 x 31.8 x 0.15
37	0.075.1551.3/30	1	support (...)<- ORDER ALSO: 1x 2.1219.025.2/10 - 1x 2.0399.128.2/10
38	2.1589.146.0	1	shoulder ring 15.2 x 19 x 0.15
38	2.1589.147.0	1	shoulder ring 15.2 x 19 x 0.10
38	2.1589.153.0	1	shoulder ring 15.2 x 19 x 1.00
39	2.1410.057.1	1	circlip 15
40	2.2020.001.0	1	ball bearing 15 x 32 x 8.00
41	2.2725.016.0	1	roller cage 15 x 21 x 12
42	2.2680.020.0	1	ring 12 x 15 x 12
43	2.0399.128.2	1	screw (...)<=
43	2.0399.128.2/10	1	screw m 8 p.1 x 8 =>(…)
44	2.0342.007.2	1	screw m 4 p.0.7x25
45	0.065.1558.6/10	1	bevel drive

Section: ENGINE  
LUBRICATION => (...)

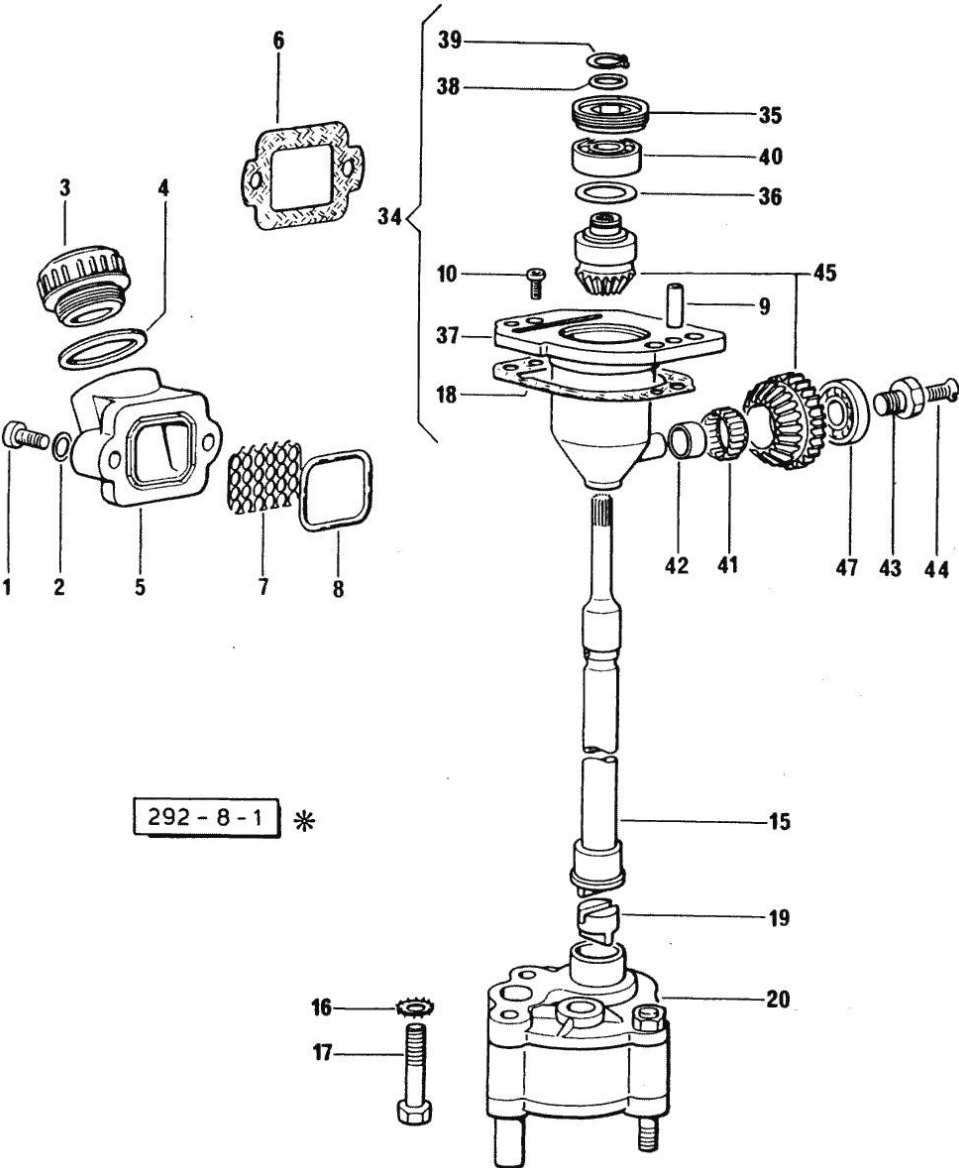


Fig.	P/n	QTY	Name
------	-----	-----	------

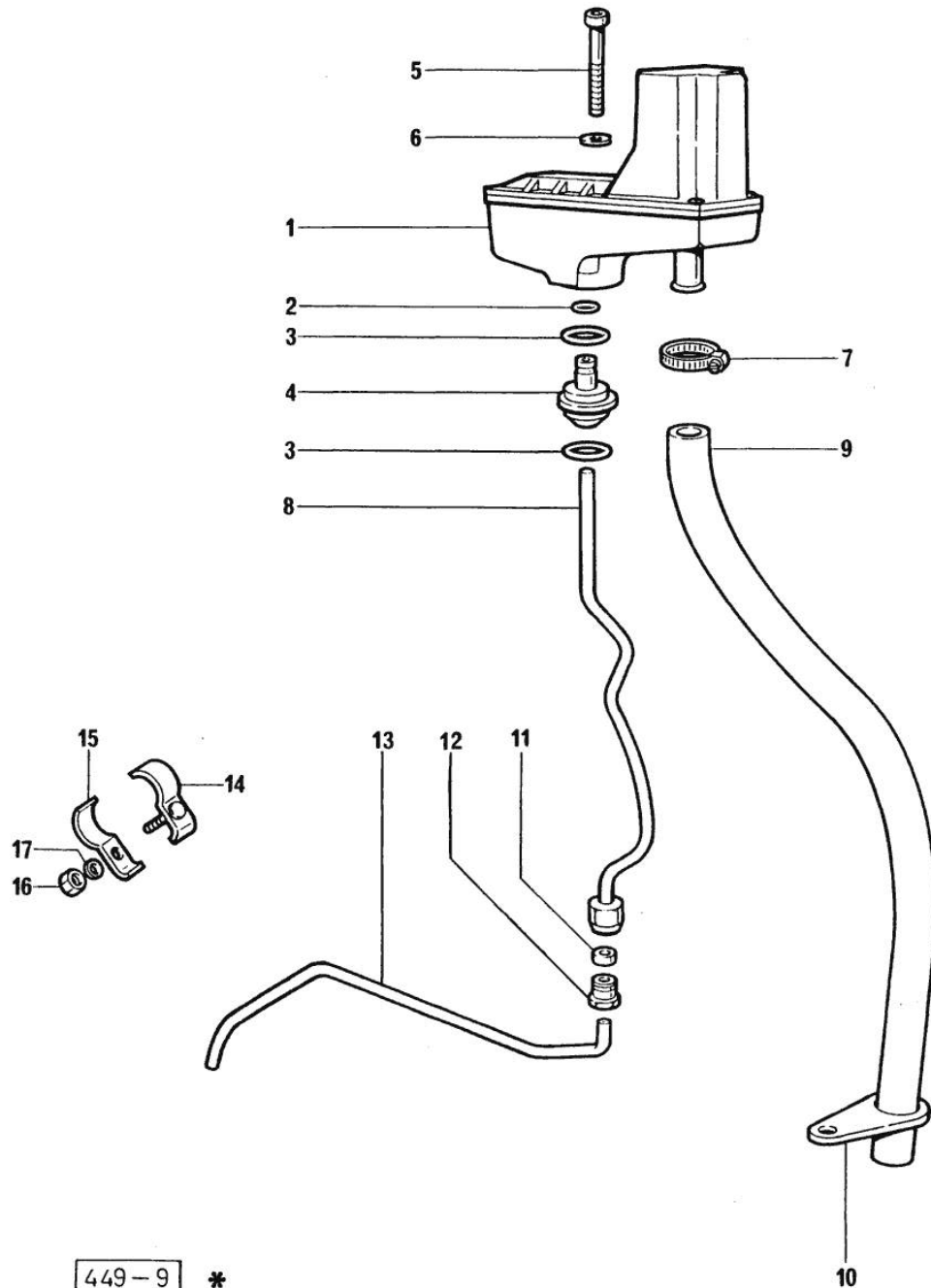
47	2.2030.002.0	1	ball bearing 12 x 28 x 8
----	--------------	---	--------------------------

Section: ENGINE  
**LUBRICATION => (...)**

Fig.	P/n	QTY	Name
------	-----	-----	------

 Notes:  
 [H 356]

1	0.000.0000.1	1	cannot be supplied ☞ 01.00.10
2	2.1539.074.0	1	special oil seal 7.66 x 1.78
3	2.1539.072.0	2	special oil seal 23.52 x 1.78
4	0.066.1558.0	1	bush
5	2.0312.221.2	2	screw m 8 p.1.25x75
6	2.1480.014.1	2	washer 8
7	2.6859.073.2	1	clamp
8	0.066.1557.2	1	tube
9	0.066.1559.0	1	tube
10	0.075.1151.0	1	bracket
11	2.3350.003.1	1	nosepiece 8
12	2.3339.418.1	1	pipe fitting m 12 p.1
13	0.069.1550.0	1	tube
14	0.075.1552.2	2	bracket
15	0.075.1552.0	2	bracket
16	2.1011.103.2	2	nut m 6 p.1
17	2.1470.002.2	2	lock washer 6



449-9

\*

10

Thank you so much for reading.  
Please click the “Buy Now!”  
button below to download the  
complete manual.



After you pay.

You can download the most  
perfect and complete manual in  
the world immediately.

Our support email:

[ebooklibonline@outlook.com](mailto:ebooklibonline@outlook.com)