

Section: ENGINE  
CRANKCASE

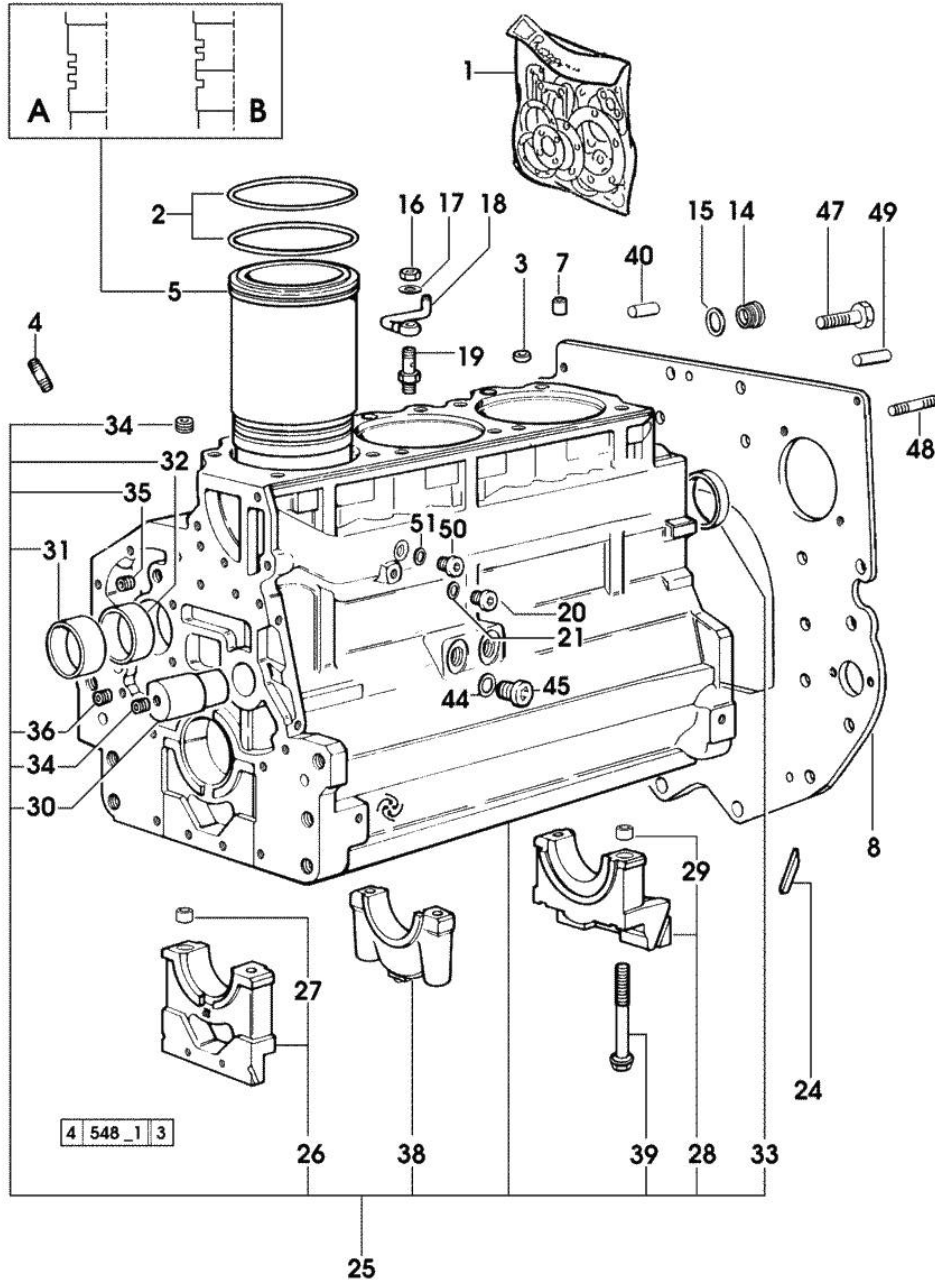


Fig.	P/n	QTY	Name
1	0.070.0050.6	1	gasket set - FOR ENGINE MOUNTING
2	2.1519.096.0/20	9	special oil seal 107.67x1.78 (...) <=
2	2.1539.193.0	6	special oil seal 107.62x2.62 => (...)
3	2.1559.188.2	3	bush 11.4 x 14 x 16
4	2.0432.003.7	9	stud bolt m 8 p.1.25 / p.1 x 20
5	0.009.7500.0/10	3	engine cylinder 1628 <= = A
5	0.011.0183.0/20	3	engine cylinder => (...)
5	0.011.0582.0	3	engine cylinder => 1629 - (...) <= = B
7	2.1549.154.2	3	bush 4.8x5.8x16
8	0.066.1130.0/20	1	flange
14	2.3199.405.2	1	plug m 28 p.1.5
15	2.1539.047.0	1	special oil seal 26.7x1.78
16	2.1099.108.2	3	special nut m 10 p.1
17	2.1560.006.0	6	gasket 10.2 x 16
18	0.086.1550.2	3	sprayer nozzle
19	0.065.1160.3/20	3	valve
20	2.3199.292.0	1	plug 1/4" gas
21	2.1560.010.0	1	gasket 14.2 x 20
24	0.066.1152.0/10	4	gasket
25	0.070.1110.6/20	1	crankcase * 2059 <=
			- N.3 011.0183.0/10 - N.6 2.1539.193.0
26	0.065.1112.7	1	support
27	2.1699.165.0	1	bush 12.3x15x16
28	0.065.1116.3	1	support
29	2.1699.165.0	1	bush 12.3x15x16
30	0.066.1151.0	1	pin
31	0.065.1141.0	1	special bushing 59X55X30
32	0.065.1140.0	3	special bushing 59X55X20
33	2.3179.012.0	1	plug 60
34	2.3130.001.1	9	plug 1/8" gas
35	2.3130.002.1	2	plug 1/4" gas
36	2.3130.003.1	2	plug 3/8" gas
38	0.065.1114.0/10	2	support
39	0.065.1117.0	8	screw m 12 x 100

**CRANKCASE**

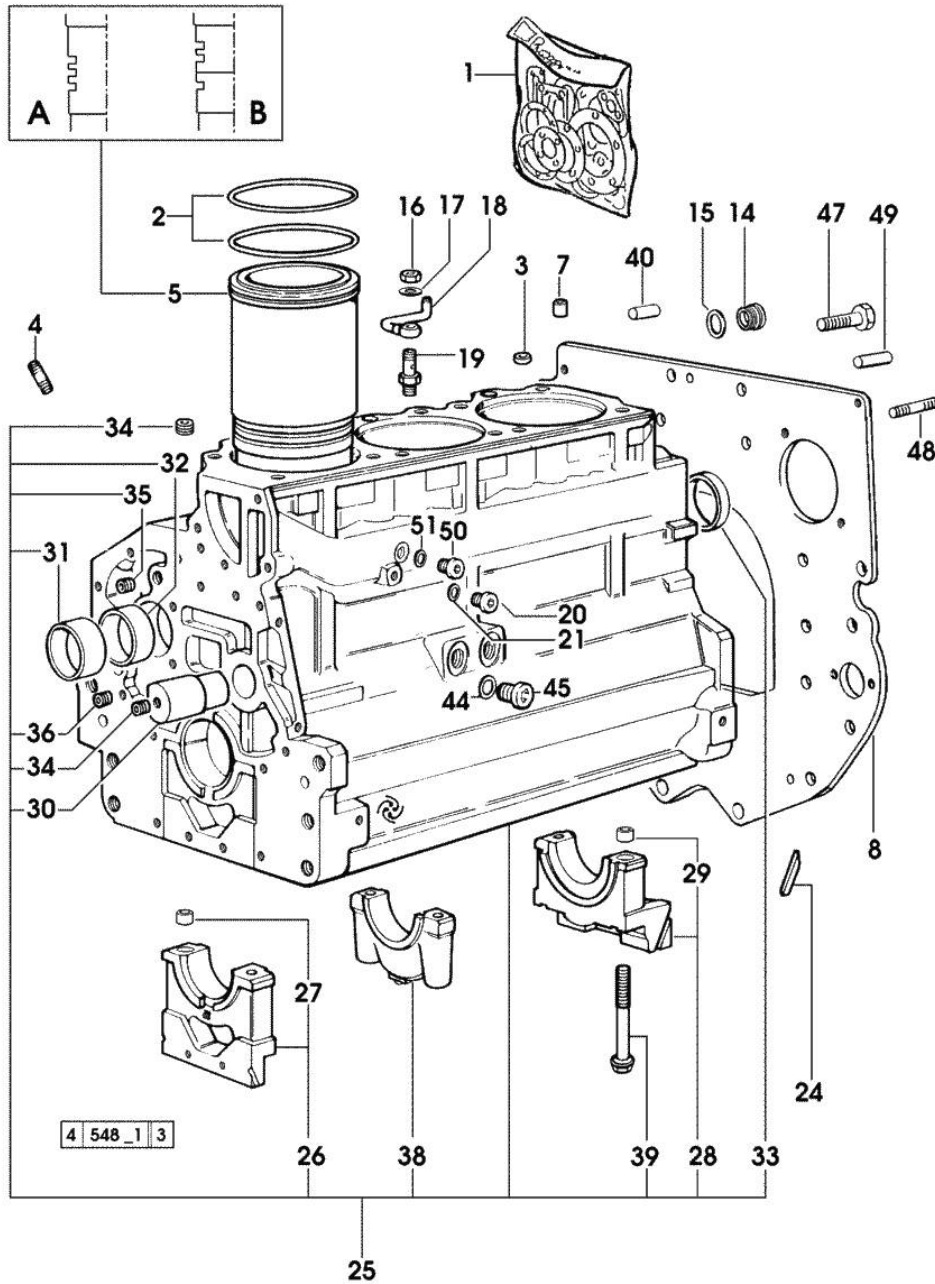


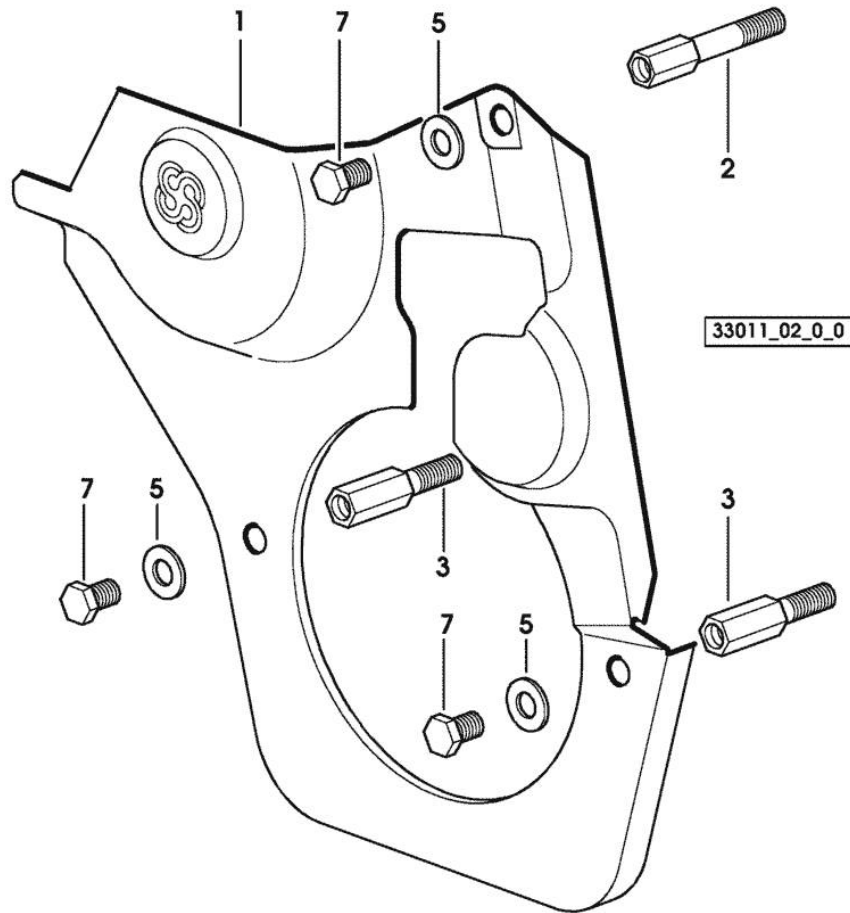
Fig.	P/n	QTY	Name
40	2.1651.912.0	2	cylindrical plug 12x28
44	2.1560.014.0		washer 18.2 x 24 => (...)
45	2.3120.101.0		plug m 18 p.1.5 => (...)
47	2.0112.511.2	8	screw m 14 p.2 x 30
48	2.0432.255.7	2	stud bolt m 12 p.1.75-1.25x25
49	2.1651.917.0	1	cylindrical plug 12x40
50	2.3120.101.0	1	plug m 18 p.1.5 => (...)
51	2.1560.014.0	1	washer 18.2 x 24

Section: ENGINE  
TIMING CASE

Fig.	P/n	QTY	Name
------	-----	-----	------

Notes:  
[H-358 PRESTIGE]

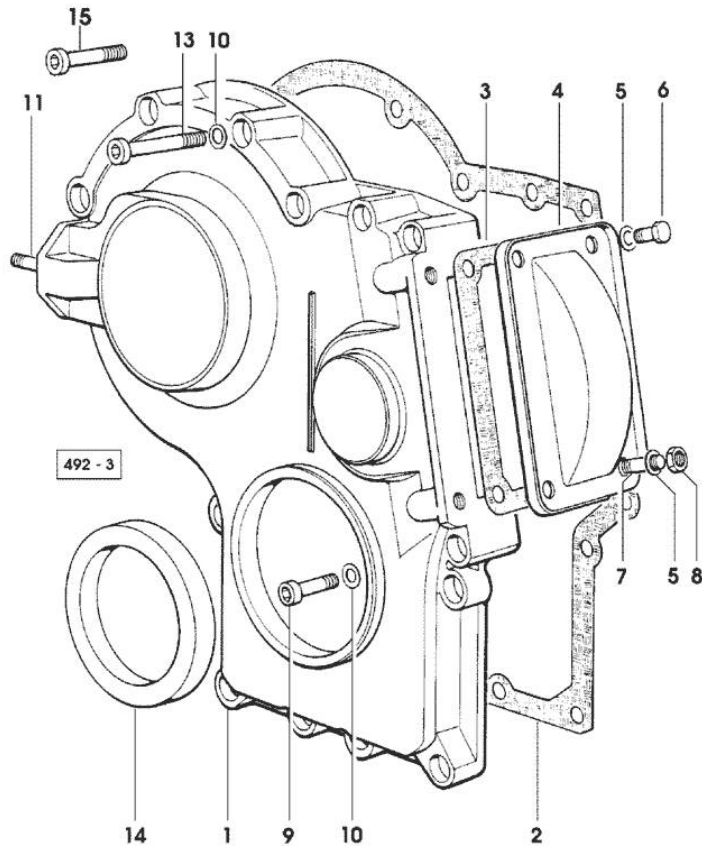
1	0.007.1262.3/50	1	guard
2	0.007.1271.0/10	1	small column m 8 p.1.25 / L = mm 60
3	0.007.1272.0/10	2	small column m 8 p.1.25 / L = mm 50
5	2.1310.004.2	3	flat washer 8.4x17
7	2.0112.205.2	3	screw m 8 p.1.25 x 16



Section: ENGINE  
TIMING CASE

Fig.	P/n	QTY	Name
------	-----	-----	------

Notes:  
[H-358 PRESTIGE]



1	0.065.1132.0/60	1	guard
2	0.065.1150.0/30	1	gasket
3	0.065.1152.0	1	gasket
4	0.065.1151.0	1	cover
5	2.1470.004.2	4	lock washer 8
6	2.0112.205.2	2	screw m 8 p.1.25 x 16
7	2.0432.003.7	2	stud bolt m 8 p.1.25 / p.1 x 20
8	2.1011.405.2	2	nut m 8 p.1
9	2.0312.208.2	8	screw m 8 p.1.25 x 25
10	2.1480.014.1	15	washer 8
11	2.0432.003.7	2	stud bolt m 8 p.1.25 / p.1 x 20
13	2.0312.214.2	3	screw m 8 p.1.25 x 40
14	2.1529.141.0	1	special oil seal
15	2.0312.214.2	4	screw m 8 p.1.25 x 40

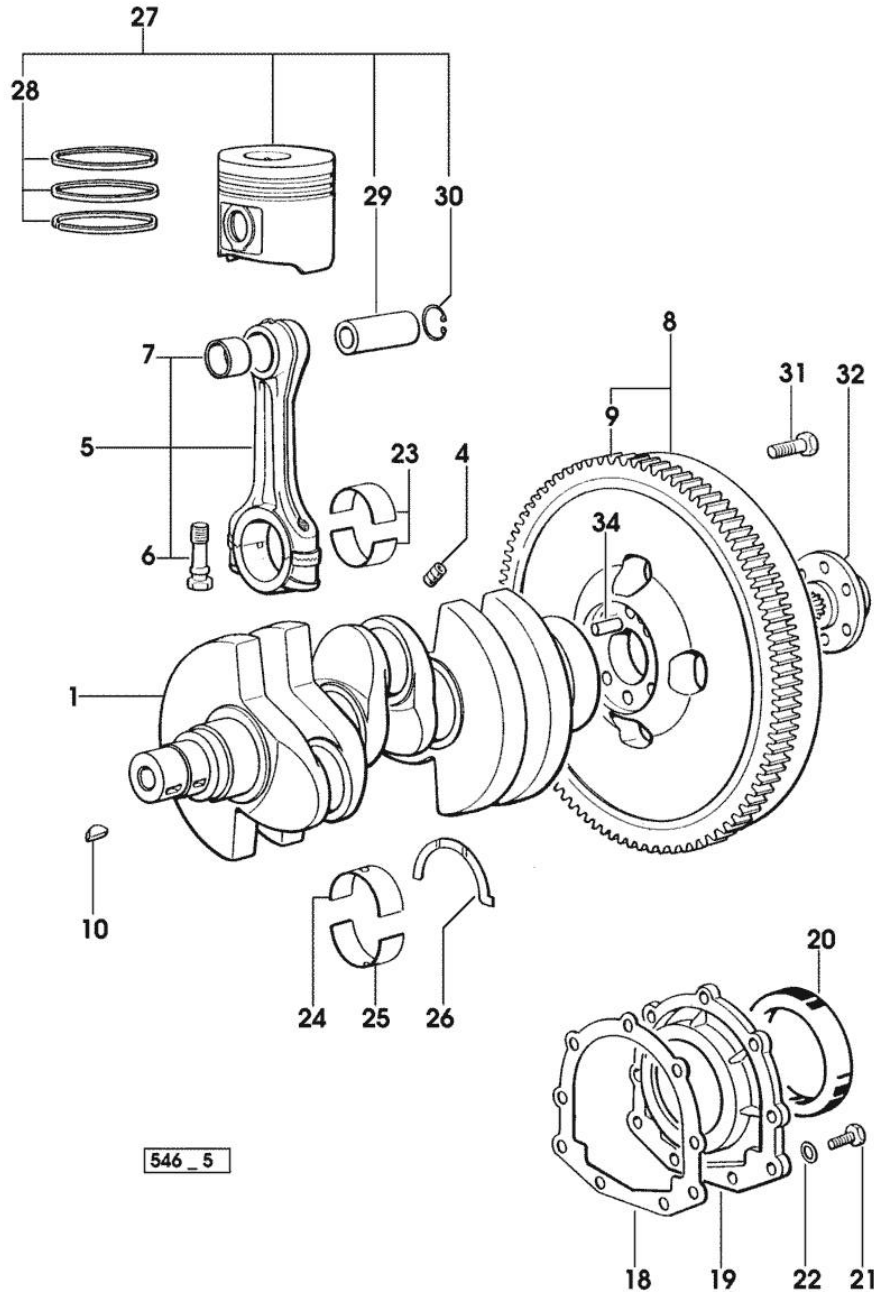
Section: ENGINE

**CRANKSHAFT**

Fig.	P/n	QTY	Name
------	-----	-----	------

Notes:  
[H-358 PRESTIGE]

1	0.007.1554.0/20	1	crankshaft * (...) <= - N.1 - 007.1711.0/10 - N.3 - 2.3130.001.0
4	2.3130.001.1	3	plug 1/8" gas
5	0.078.1220.3/30	3	engine connecting rod
6	2.0399.213.0	6	screw m 12 p.1.25x61.5
7	2.1559.114.0/10	3	special bushing
8	0.069.1247.3/20	1	flywheel
9	0.069.1242.0	1	crown wheel Z = 121
10	2.1720.006.0	2	key 4x6.5
18	0.065.1254.0/20	1	gasket
19	0.007.1711.0/10	1	cover => (...)
19	0.065.1253.0/20	1	cover (...) <=
20	2.1529.073.0	1	special oil seal 110x130x13
21	2.0112.207.2	9	screw m 8 p 1.25 x 20
22	2.1475.002.2	9	conical washer 8
23	0.065.1225.0	6	con.rod half bushing STANDARD - A = 28.75 -> 29.00
23	0.065.1225.7		con.rod half bushing - mm 0.25
23	0.065.1225.8		con.rod half bushing - mm 0.50
24	0.065.1215.0	4	main half bushing STANDARD
24	0.065.1215.7		main half bushing - mm 0.25
24	0.065.1215.8		main half bushing - mm 0.50
25	0.065.1216.0	4	main half bushing
25	0.065.1216.7		main half bushing - mm 0.25
25	0.065.1216.8		main half bushing - mm 0.50
26	0.065.1218.0	3	shim STANDARD
26	0.065.1218.7		shim + mm 0.10
26	0.065.1218.8		shim + mm 0.15
27	0.086.0060.6/30	3	complete piston
28	0.086.0052.6/10	3	piston ring set
29	0.078.1236.0	3	piston pin Ø 18 / Ø 35 / L = mm 86
30	2.1411.014.1	6	circlip 35
31	2.0139.022.2	6	screw m 12 p.1.25x55
32	0.255.2525.0/10	1	flange
34	2.1652.915.0	1	cylindrical plug 12x35



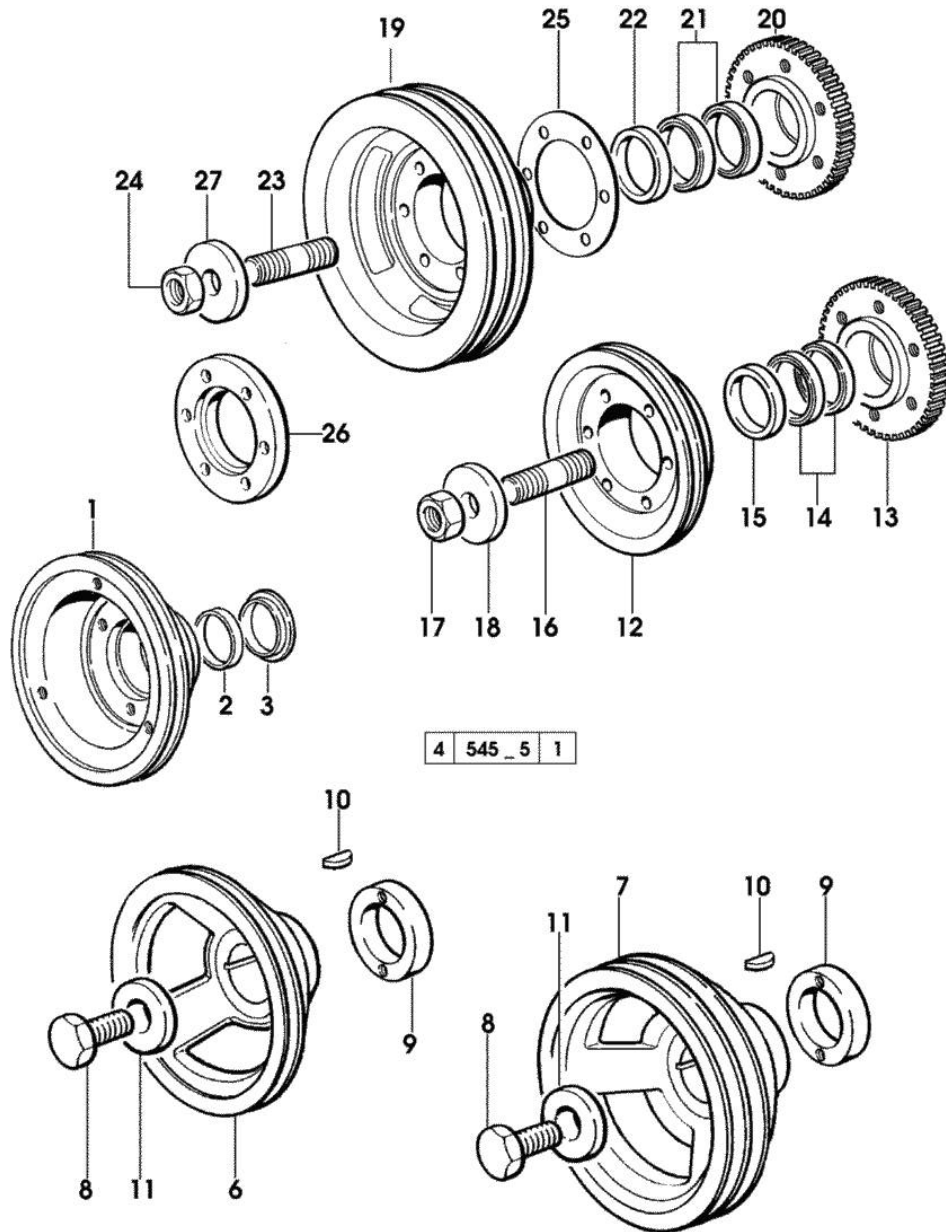
Section: ENGINE

ENGINE SHAFT - PULLEYS

Fig.	P/n	QTY	Name
------	-----	-----	------

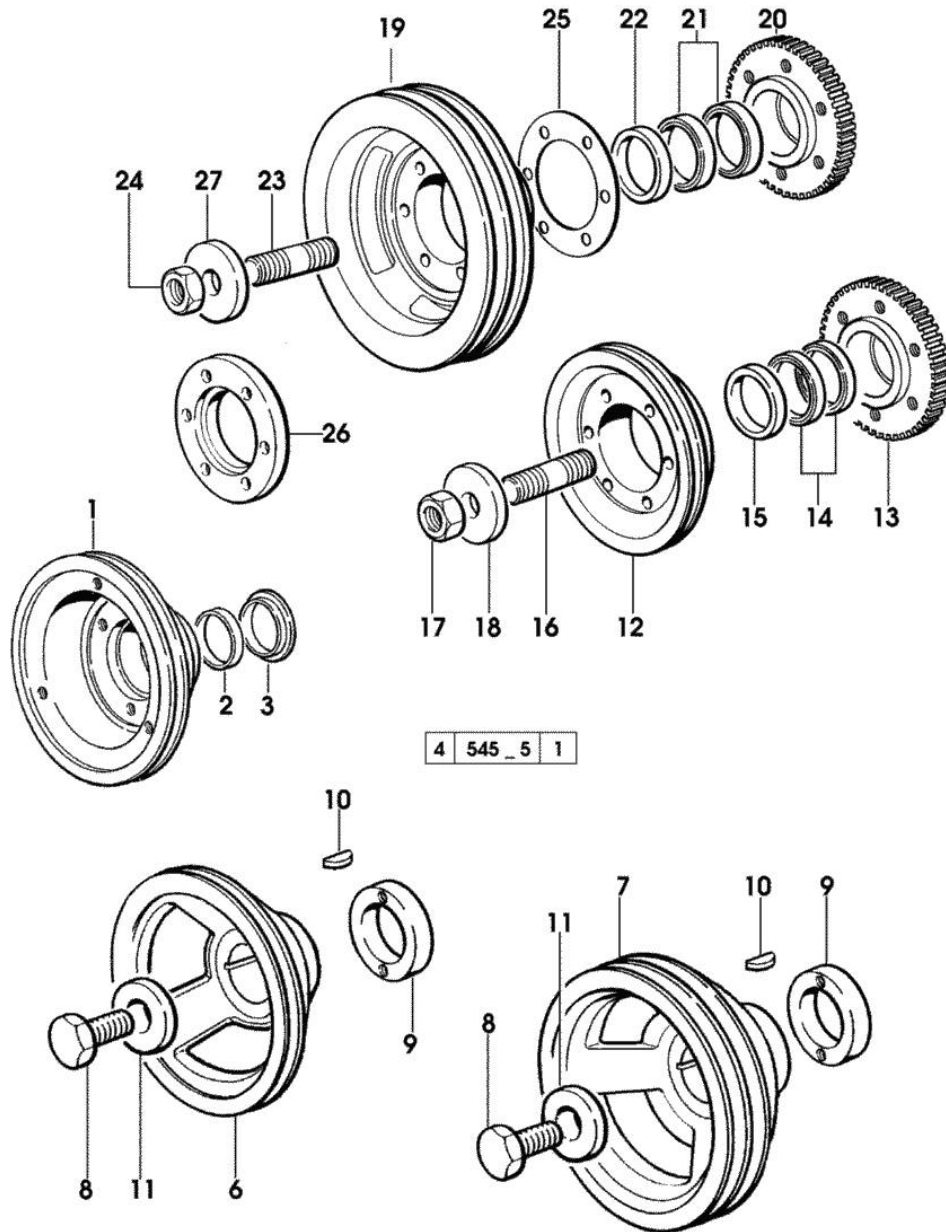
Notes:  
[H-358 PRESTIGE]

1	0.089.1251.0/10	1	pulley 1320 <= X H 358 8089 <= X H 468 (...) <= X H 478 - H 488T
1	0.089.1252.0/10	1	pulley 1320 <= X H 358 8089 <= X H 468 (...) <= X H 478 - H 488T - FOR TRACTORS WITH AIR CONDITIONING
2	0.085.1254.0	1	ring
3	0.065.1256.0	1	ring 45x52
6	0.007.1457.0/20	1	pulley
7	0.007.1458.0/30	1	pulley - FOR TRACTORS WITH AIR CONDITIONING
8	2.0399.144.7/10	1	screw m 20 p.1.5x51 * (...) <- - N.1 - 2.1599.524.7
9	0.085.1248.0/10	1	hub
10	2.1720.006.0	1	key 4x6.5
11	2.1599.524.7	1	washer 21x60x12 * (...) <= - N.1 - 2.0399.144.7
12	0.082.1244.0/10	1	pulley => 1321 X H 358 => 8090 X H 468 => (...) X H 478 - H 488T
13	0.011.3515.0/10	1	hub Z = 48
14	0.065.1256.0	2	ring 45x52
15	2.1579.865.0	4	spacer 45.2x51.8x10
16	2.0439.195.7	1	stud bolt m 20 p.1.5x80
17	2.1019.094.7	1	nut m 20 p.1.5
18	2.1599.524.7	1	washer 21x60x12
19	0.082.1250.0/10	1	pulley => 1321 X H 358 => 8090 X H 468 => (...) X H 478 - H 488T - FOR TRACTORS WITH AIR CONDITIONING
20	0.011.3515.0/10	1	hub Z = 48
21	0.065.1256.0	2	ring 45x52
22	2.1579.865.0	1	spacer 45.2x51.8x10
23	2.0439.195.7	1	stud bolt m 20 p.1.5x80



**ENGINE SHAFT - PULLEYS**

Fig.	P/n	QTY	Name
24	2.1019.094.7	1	nut m 20 p.1.5
25	2.1589.137.0	3	shoulder ring 71x110x1
26	0.089.1253.0/10	1	spacer
27	2.1599.524.7	1	washer 21x60x12



Section: ENGINE

**CAMSHAFT**

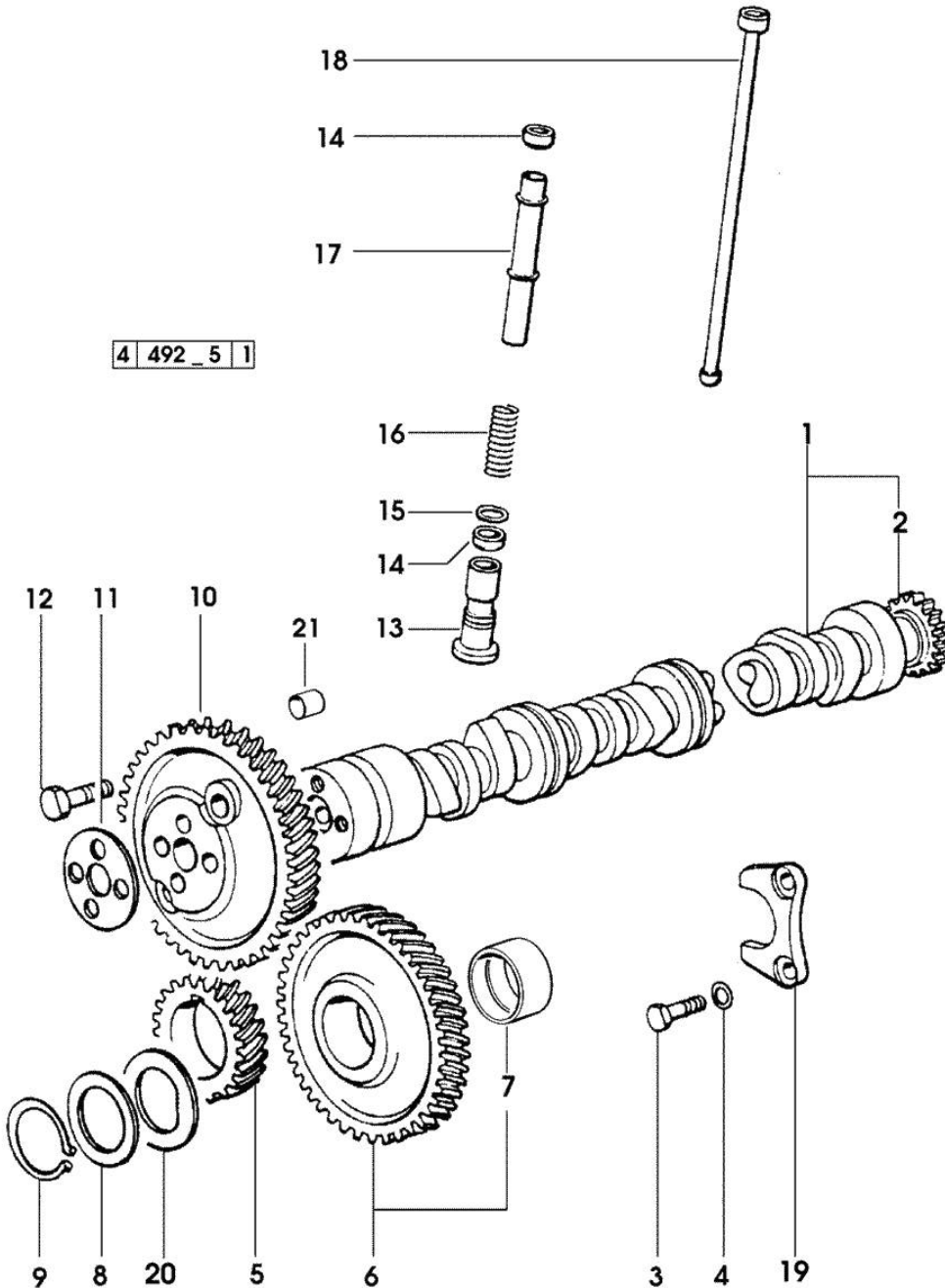


Fig.	P/n	QTY	Name
------	-----	-----	------

Notes:  
[H-358 PRESTIGE]

1	0.070.1310.3/40	1	camshaft
2	0.065.1324.0/10	1	gear Z = 32
3	2.0312.206.2	2	screw m 8 p 1.25 x 20
4	2.1480.014.1	2	washer 8
5	0.065.1323.0/30	1	gear Z = 29
6	0.007.1177.3/10	1	gear z = 57
			- WITH RED IDENTIFICATION STAMP
6	0.007.1178.3/10	1	gear z = 57
			- WITH YELLOW IDENTIFICATION STAMP
6	0.007.1179.3/10	1	gear z = 57
			- WITH GREEN IDENTIFICATION STAMP
7	2.1559.185.0/10	1	bushing
8	0.065.1352.0	1	shim
9	2.1410.016.1	1	circlip 40
10	0.065.1354.0/20	1	gear z=58
11	0.065.1350.0	1	small disc
12	2.0132.207.2	4	screw m 10 p.1 x 25
13	0.065.1330.0	6	tappets
14	2.1569.114.0/10	12	gasket 14x18.5x8
15	2.1599.437.0	6	shoulder ring
16	2.4019.300.1/10	6	spring 18.5x52x2
17	0.065.1332.0	6	sleeve
18	0.065.1331.2	6	rod
19	0.065.1353.0	1	small plate
20	0.065.1351.0	2	shoulder ring
21	2.1559.398.0	1	bushing 10.5x13x12

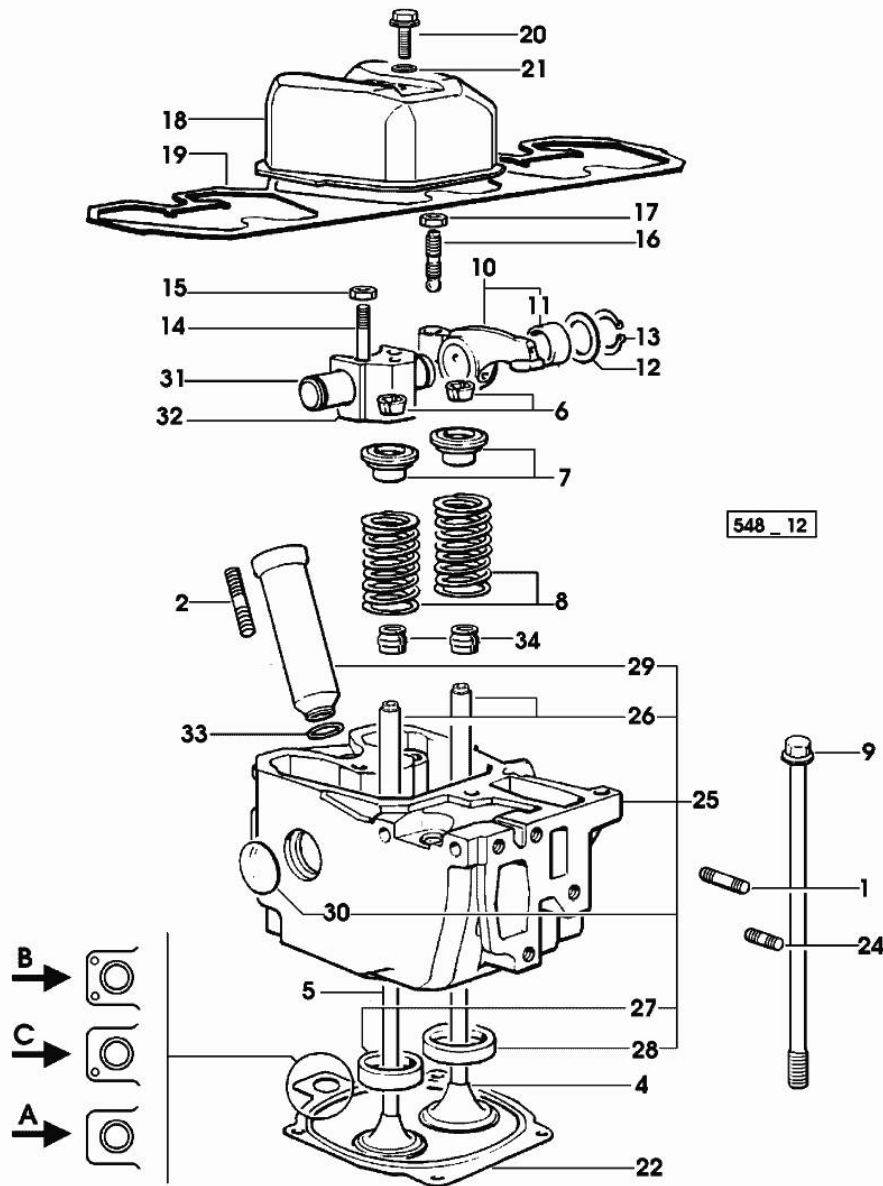


Section: ENGINE  
CYLINDER HEAD

Fig.	P/n	QTY	Name
------	-----	-----	------

Notes:  
[H-358 PRESTIGE]

1	2.0432.011.7	3	stud bolt m 8 p.1.25 / p.1 x 40
2	2.0432.161.7	3	stud bolt m 10 p.1.5 / p.1.25 x 40
4	0.010.6016.0	3	inlet valve mm 43.63 / Ø mm 9
5	0.066.1421.0	3	exhaust valve
6	0.074.1423.0	12	conical valve cotter
7	0.066.1425.0	6	cup
8	2.4019.287.0	6	spring
9	0.066.1443.0/10	12	screw
10	0.066.1432.3	6	rocker arm
11	2.1559.021.0/40	6	bushing 15x19x22
12	2.1599.432.0	6	shoulder ring
13	2.1410.055.1	6	circlip 19
14	2.0432.163.7	6	stud bolt m 10 p.1.5 / p.1.25 x 45
15	2.1011.321.2	6	nut m 10 p.1.25
16	0.021.1434.0	6	screw
17	2.1011.405.2	6	nut m 8 p.1
18	0.007.1139.0/10	3	small cap * (...) <=
			- N.4 - 2.0399.130.2/10
19	0.069.1450.0/30	1	tappet gasket
20	2.0399.130.2	3	screw m 8 x 30 (...) <=
20	2.0399.130.2/10	3	screw m 8x36x44 => (...)
21	2.1569.170.0/10	3	gasket 8.2 x 14
22	0.078.1451.0/40	1	head gasket -A-
22	0.078.1452.0/30	1	head gasket -B-
22	0.078.1453.0/40	1	head gasket -C-
24	2.0432.005.7	3	stud bolt m 8 p.1.5 / p.1 x 25
25	0.012.2693.3/10	3	engine head
26	0.007.1779.0/10	6	valve guide
27	0.066.1427.0	3	valve seat
28	0.078.1426.0	3	valve seat
29	0.010.6041.0	3	bush
30	2.3170.012.1	6	expansion plug 30
31	0.066.1431.0	3	pin
32	0.066.1430.0/10	3	support
33	2.1530.051.0	3	oil seal 20.22x3.53
34	2.1519.117.0	6	special oil seal

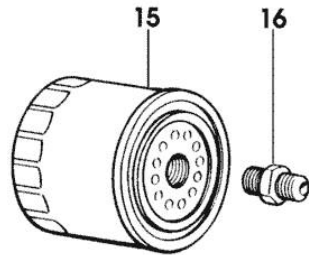


Section: ENGINE  
**LUBRICATION**

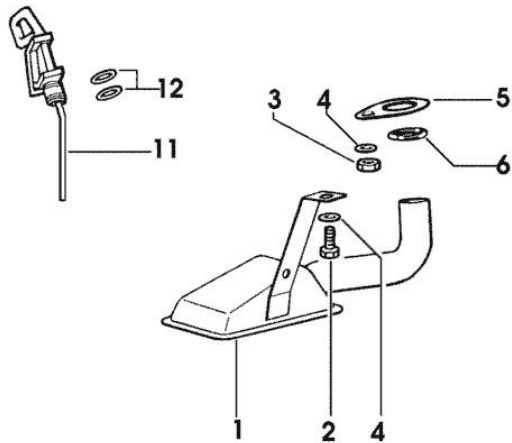
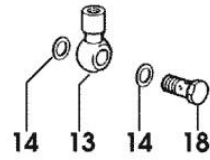
Fig.	P/n	QTY	Name
------	-----	-----	------

Notes:  
 [H-358 PRESTIGE]

1	0.007.1425.3	1	tube => 1534
1	0.070.1531.3	1	tube 1533 <=
2	2.0112.205.2	1	screw m 8 p.1.25 x 16
3	2.1011.105.2	1	nut m 8 p.1.25
4	2.1470.004.2	2	lock washer 8
5	0.065.1538.0	1	flange
6	2.1539.040.0	1	special oil seal 21.82 x 3.53
11	0.085.1513.2/20	1	dipstick
12	2.1539.065.0	2	special oil seal 8.73 x 1.78
13	2.3249.014.2	1	pipe fitting m 12 p.1.5
14	2.1560.008.0	2	gasket 12.2 x 18
15	0.044.1567.0	1	oil filter element
16	2.3339.307.0	1	pipe fitting m 22 p.1.5-3/4"
18	2.3339.448.2	1	pipe union m 12 p.1.75



548\_14

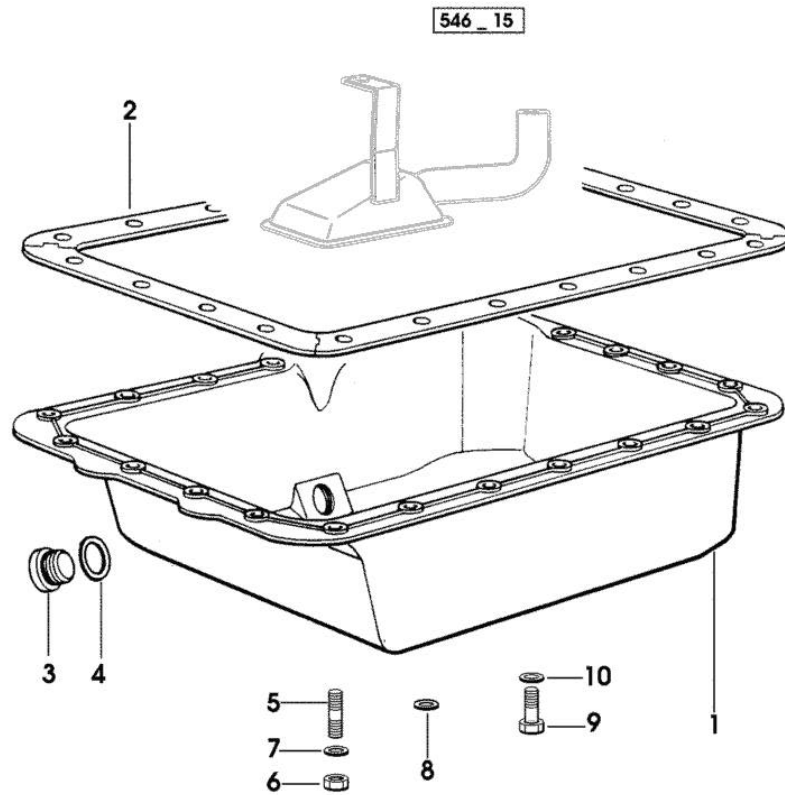


Section: ENGINE  
**LUBRICATION**

Fig.	P/n	QTY	Name
------	-----	-----	------

Notes:  
 [H-358 PRESTIGE]

1	0.070.1510.2/60	1	oil sump
2	0.070.1551.0	1	gasket 1370 <=
3	2.3199.001.2	1	plug 1/2" gas
4	2.1560.054.0	1	gasket 21 x 26
5	2.0432.003.7	22	stud bolt m 8 p.1.25 / p.1 x 20 1370 <=
6	2.1121.105.2	22	nut m 8 x 1 1370 <=
7	2.1470.004.2	22	lock washer 8 1370 <=
8	2.1599.459.0	3	small plate 1370 <=
9	2.0112.205.2	22	screw m 8 p.1.25 x 16 => 1371
10	2.1475.002.7	22	washer 8.4 => 1371

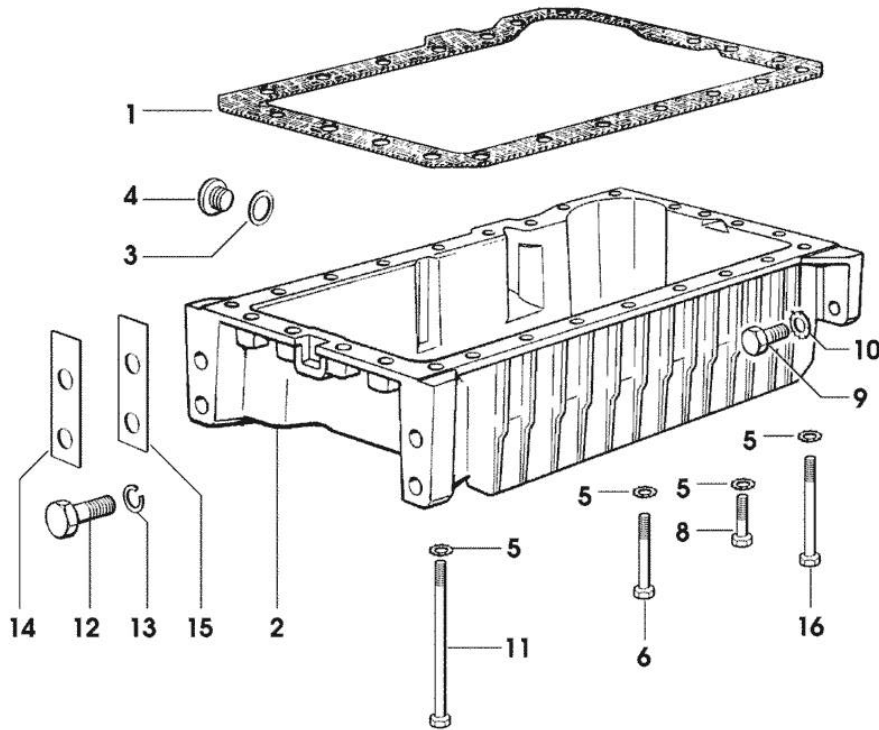


Section: ENGINE  
LUBRICATION

Fig.	P/n	QTY	Name
------	-----	-----	------

Notes:  
[H-358 PRESTIGE]

1	0.007.0614.0/10	1	gasket
2	0.007.1422.0/40	1	oil sump * 1533 <= - N.1 - 007.1427.0 - 002.8816.0 - 2.0112.007.2 - 2.1011.103.2 - 2.1470.002.2
3	2.1560.054.0	1	gasket 21 x 26
4	2.3199.001.2	1	plug 1/2" gas
5	2.1470.004.2	22	lock washer 8
6	2.0112.226.2	7	screw m 8 p.1.25 x 85 => 1534
6	2.0112.235.2	3	screw m 8 p.1.25 x 130 1533 <=
6	2.0122.227.2	4	screw m 8 p.1x90 1533 <=
8	2.0112.215.2	13	screw m 8 p.1.25 x 40
9	2.0112.411.2	4	screw m 12 p.1.75 x 30
10	2.1470.007.2	4	lock washer 12
11	2.0112.239.2	2	screw m 8 p.1.25 x 150
12	2.0112.720.1	4	screw m 18 p.2.5 x 55
13	2.1475.007.7	4	washer 18
14	0.008.8586.0/10	4	shim mm 0.20
15	0.008.8587.0/10	8	shim mm 0.50
16	2.0112.235.2	3	screw m 8 p.1.25 x 130



546\_16

Section: ENGINE  
LUBRICATION

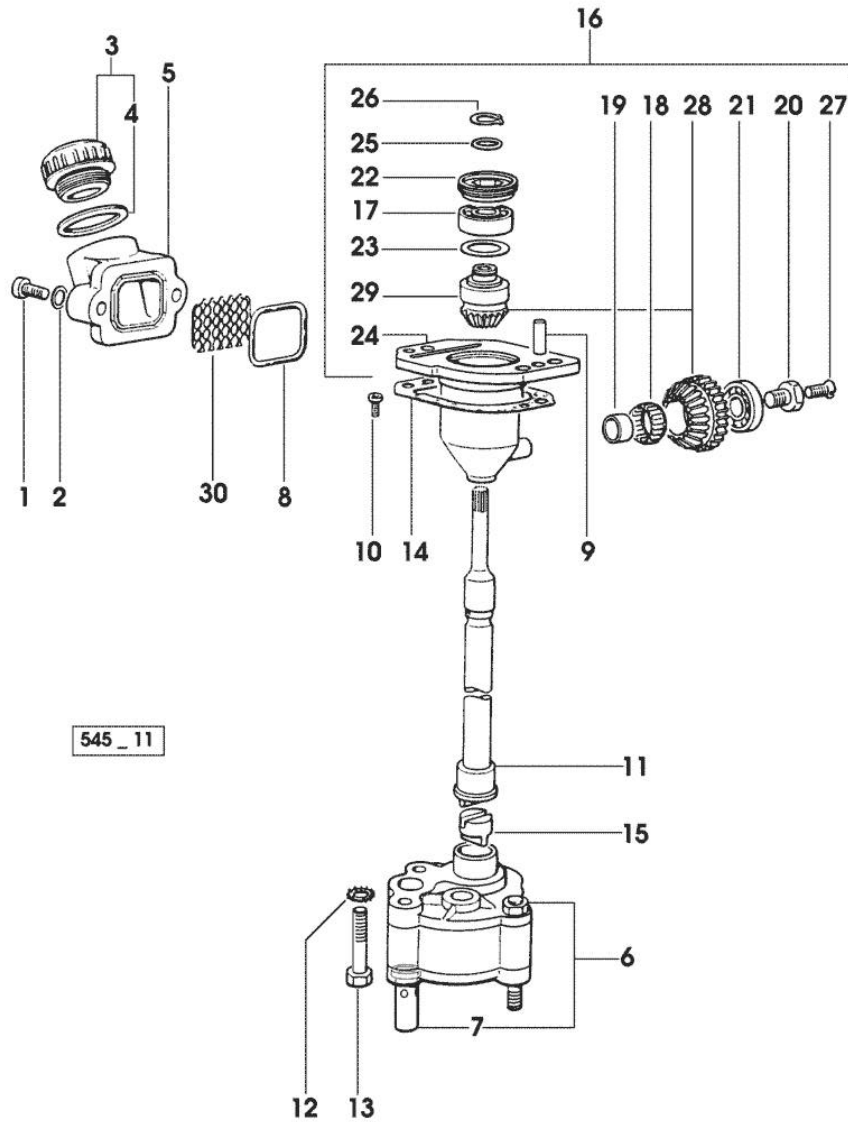


Fig.	P/n	QTY	Name
------	-----	-----	------

Notes:  
[H-358 PRESTIGE]

1	2.0312.206.2	2	screw m 8 p 1.25 x 20
2	2.1480.014.1	2	washer 8
3	0.041.1135.4	1	plug 1" gas
4	2.1569.072.0	1	gasket 32 x 39.5 x 2
5	0.065.1565.0/10	1	pipe union
6	0.010.5441.4/10	1	oil pump - X H 468 - H 478 - H 488T
6	0.010.5481.4	1	oil pump - X H 358
7	0.065.1552.3/60	1	valve
8	2.1539.042.0	1	special oil seal 47.35x1.78
9	2.1651.711.0	2	pin 8 x 14
10	2.0169.005.2	2	screw m 6 p.1 x 12
11	0.065.1569.0/40	1	shaft
12	2.1470.006.2	2	lock washer 10
13	2.0112.325.2	2	screw m 10 p.1.5 x 80
14	0.065.1560.0/20	2	gasket
15	0.065.1562.0/10	1	joint
16	0.075.1551.4/20	1	support
17	2.2020.001.0	1	ball bearing 15 x 32 x 8.00
18	2.2725.016.0	1	roller cage 15 x 21 x 12
19	2.2680.020.0	1	ring 12 x 15 x 12
20	2.0399.128.2	1	screw (...) <=
20	2.0399.128.2/10	1	screw m 8 p.1 x 8 => (...)
21	2.2030.002.0	1	ball bearing 12 x 28 x 8
22	2.1219.025.2	1	ring nut m 36 p.1 (...) <=
22	2.1219.025.2/10	1	ring nut m 36 p.1.5 => (...)
23	2.1589.148.0	1	shoulder ring 28.2 x 31.8 x 0.5
23	2.1589.150.0		shoulder ring 28.2 x 31.8 x 0.1
23	2.1589.151.0		shoulder ring 28.2 x 31.8 x 0.15
24	0.075.1551.3/30	1	support * (...) <=
			- N.1 - 2.1519.025.2/10 - 2.0399.128.2/10
25	2.1589.146.0		shoulder ring 15.2 x 19 x 0.15
25	2.1589.147.0		shoulder ring 15.2 x 19 x 0.10
25	2.1589.153.0	1	shoulder ring 15.2 x 19 x 1.00
26	2.1410.057.1	1	circlip 15

Section: ENGINE  
LUBRICATION

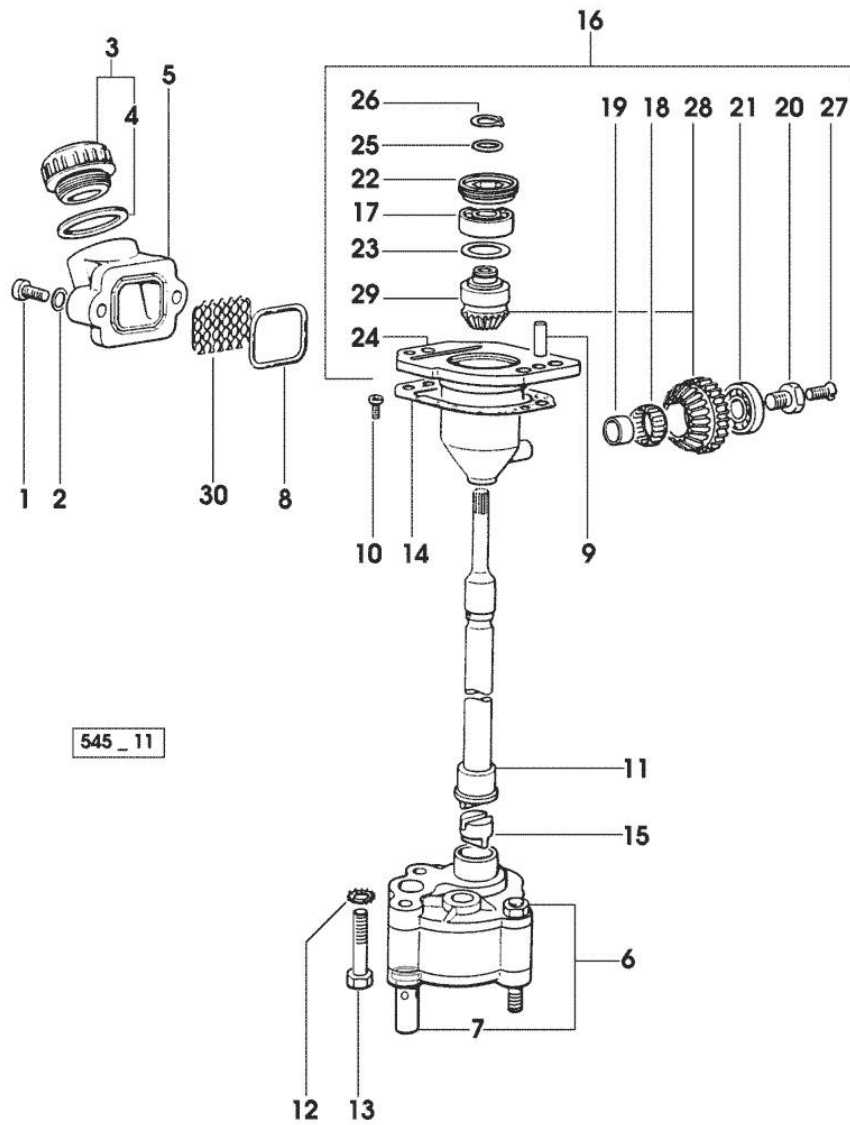


Fig.	P/n	QTY	Name
27	2.0342.007.2	1	screw m 4 p.0.7x25
28	0.065.1558.6/10	1	bevel drive
29	0.065.1559.0	1	bush
30	0.065.1567.0/10	1	filter

Section: ENGINE  
LUBRICATION

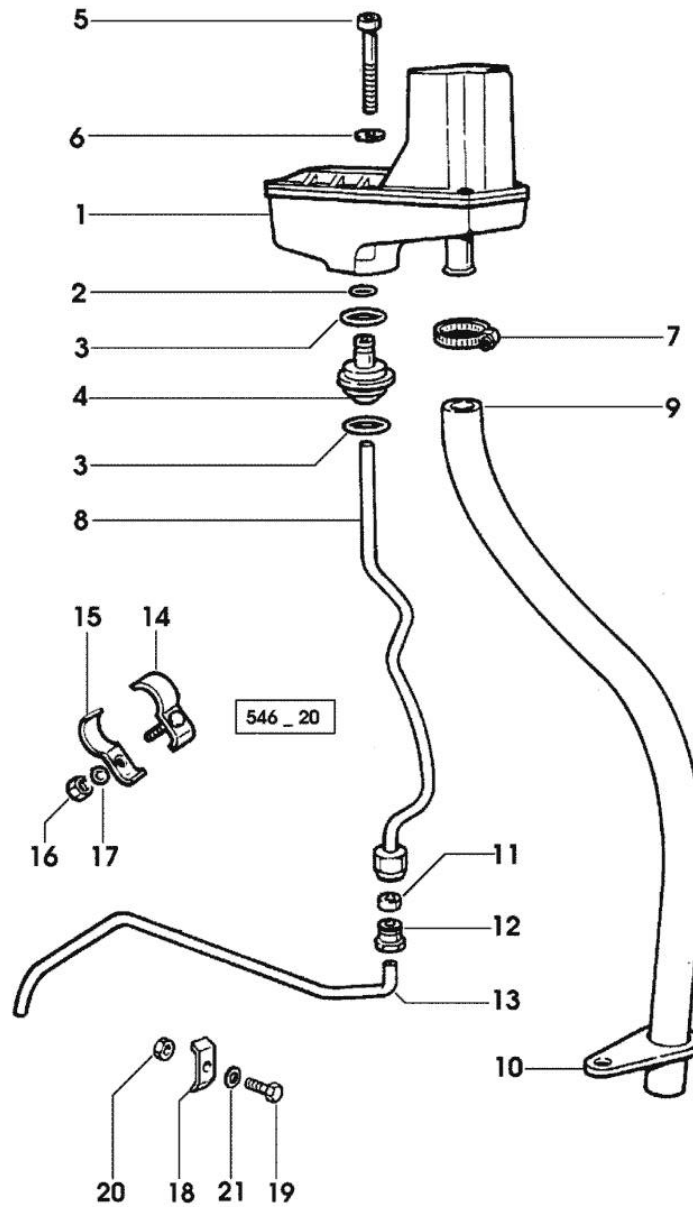


Fig.	P/n	QTY	Name
------	-----	-----	------

Notes:  
[H-358 PRESTIGE]

1	0.066.1552.4/10	1	sediment bowl ☞ 01.00.63
2	2.1539.074.0	1	special oil seal 7.66 x 1.78
3	2.1539.072.0	2	special oil seal 23.52 x 1.78
4	0.066.1558.0	1	bush
5	2.0312.221.2	2	screw m 8 p.1.25x75
6	2.1480.014.1	2	washer 8
7	2.6859.073.2	1	clamp
8	0.066.1557.2	1	tube
9	0.066.1559.0	1	tube
10	0.075.1151.0	1	bracket
11	2.3350.003.1	1	nosepiece 8
12	2.3339.418.1	1	pipe fitting m 12 p.1
13	0.007.1427.0	1	tube => 1534 X H 358
13	0.066.1556.0	1	tube - X H 468 - H 478 - H 488T
13	0.069.1550.0	1	tube 1533 <= X H 358
14	0.075.1552.2	2	bracket - X H 468 - H 478 - H 488T 1533 <= X H 358
15	0.075.1552.0	2	bracket - X H 468 - H 478 - H 488T 1533 <= X H 358
16	2.1011.103.2	2	nut m 6 p.1
17	2.1470.002.2	2	lock washer 6
18	0.002.8816.0	1	small plate => 1534 X H 358
19	2.0112.007.2	1	screw m 6 p.1 x 20
20	2.1011.103.2	1	nut m 6 p.1
21	2.1470.002.2	1	lock washer 6

Thank you so much for reading.  
Please click the “Buy Now!”  
button below to download the  
complete manual.



After you pay.

You can download the most  
perfect and complete manual in  
the world immediately.

Our support email:

[ebooklibonline@outlook.com](mailto:ebooklibonline@outlook.com)