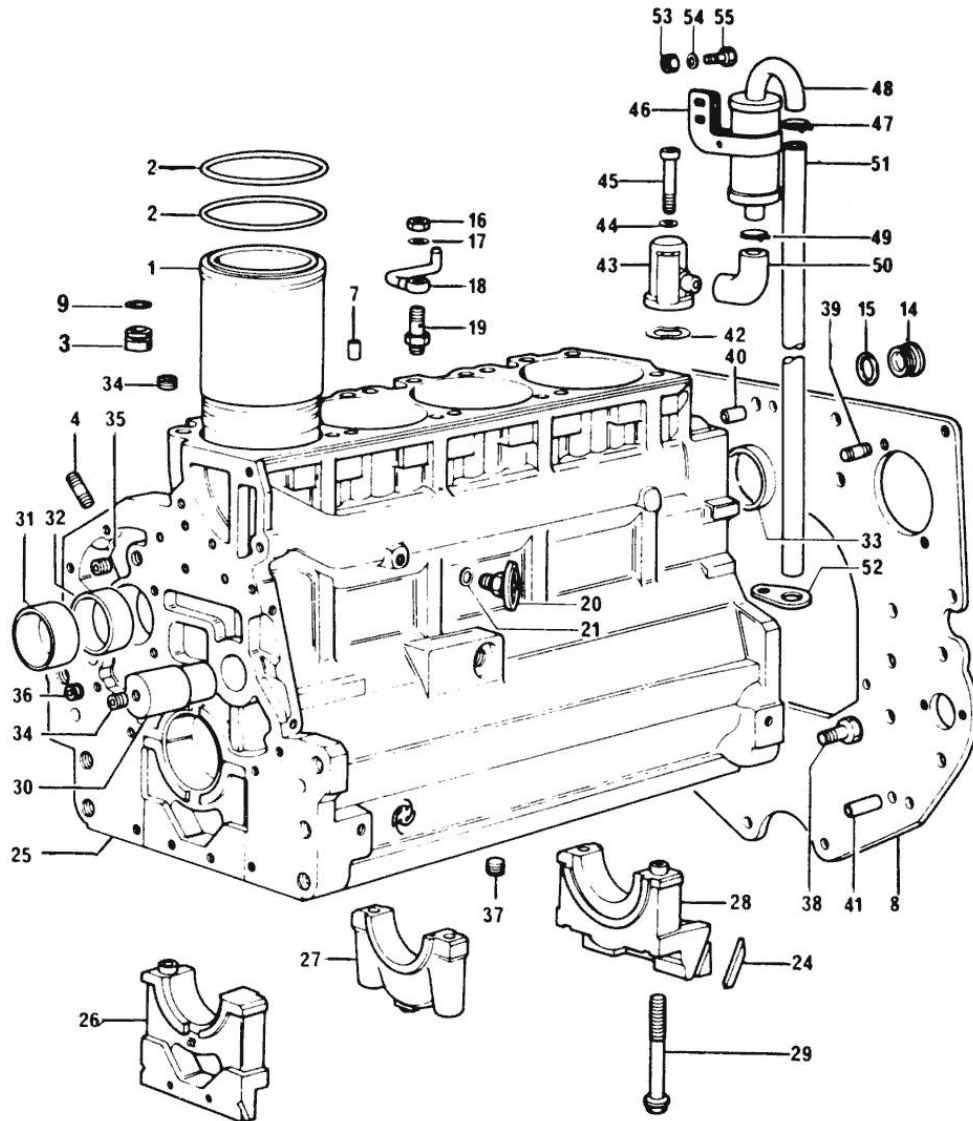


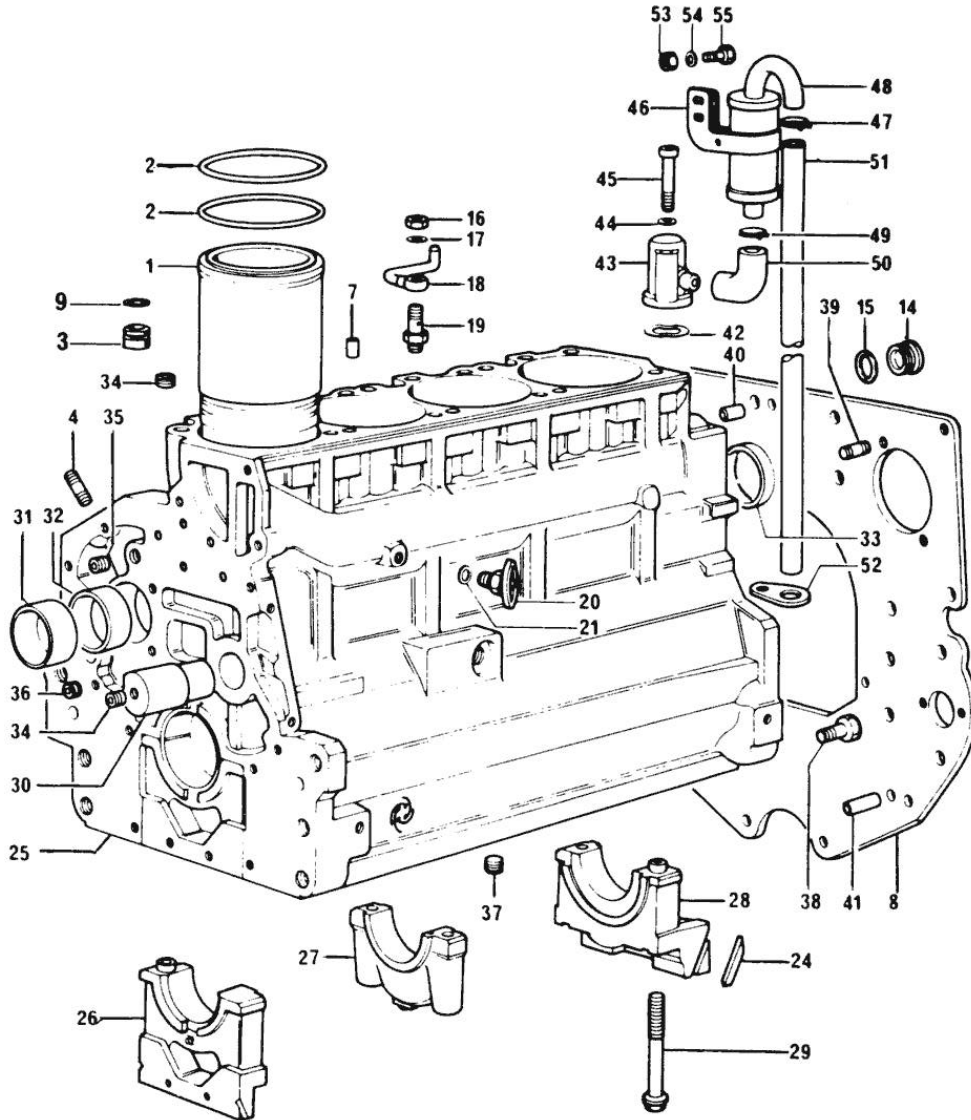
Section: ENGINE

CRANKCASE



| Fig. | P/n | QTY | Name |
|-------------------------------------|-----------------|-----|-------------------------------------|
| Notes: | | | |
| [H 468] | | | |
| 0 | 0.066.0050.6 | 1 | gasket set |
| FOR INSTALLATION OF 916.4 W ENGINE | | | |
| 0 | 0.089.0050.6 | 1 | gasket set |
| FOR INSTALLATION OF 1000.4 W ENGINE | | | |
| 1 | 0.066.1120.0/10 | 4 | engine cylinder X 916.4W |
| 1 | 0.088.1120.0/10 | 4 | engine cylinder X 1000.4 W |
| 2 | 2.1519.096.0/10 | 4 | oil seal 107.67x1.78 |
| 3 | 0.075.1152.0 | 4 | bush |
| 4 | 2.0439.154.0 | 12 | old part number |
| 7 | 2.1631.205.0 | 4 | roll pin |
| 8 | 0.066.1130.0 | 1 | flange 1924<= |
| 8 | 0.066.1130.0/20 | 1 | flange =>1925 |
| 9 | 2.1539.071.0 | 4 | special oil seal 11.11x1.78 |
| 14 | 2.3199.405.2 | 1 | plug m 28 p.1.5 |
| 15 | 2.1539.047.0 | 1 | special oil seal 26.7x1.78 |
| 16 | 2.1099.108.2 | 4 | special nut m 10 p.1 |
| 17 | 2.1560.006.0 | 8 | gasket 10.2 x 16 |
| 18 | 0.086.1550.2 | 4 | sprayer nozzle |
| 19 | 0.065.1160.3/10 | 4 | old part number |
| 20 | 0.049.1152.0 | 1 | cock |
| 21 | 2.1560.009.0 | 1 | gasket 14.2x18 |
| 24 | 0.066.1152.0/10 | 4 | gasket |
| 25 | 9.06699.43.4 | 1 | crankcase X 916.4W |
| 25 | 9.08299.42.2 | 4 | crankcase - X 916.4 W X 1000.4 W |
| 26 | 0.065.1112.3 | 1 | support |
| 26 | 2.1699.165.0 | 1 | bush 12.3x15x16 |
| 27 | 0.065.1114.7 | 3 | support |
| 28 | 0.065.1116.7 | 1 | support |
| 28 | 2.1699.165.0 | 1 | bush 12.3x15x16 |
| 29 | 0.065.1117.0 | 10 | screw m 12 x 100 |
| 30 | 0.066.1151.0 | 1 | pin |
| 31 | 0.065.1141.0 | 1 | special bushing 59X55X30 |
| 32 | 0.065.1140.0 | 4 | special bushing 59X55X20 |
| 33 | 2.3179.012.0 | 1 | plug 60 |
| 34 | 2.3130.001.1 | 11 | plug 1/8" gas |

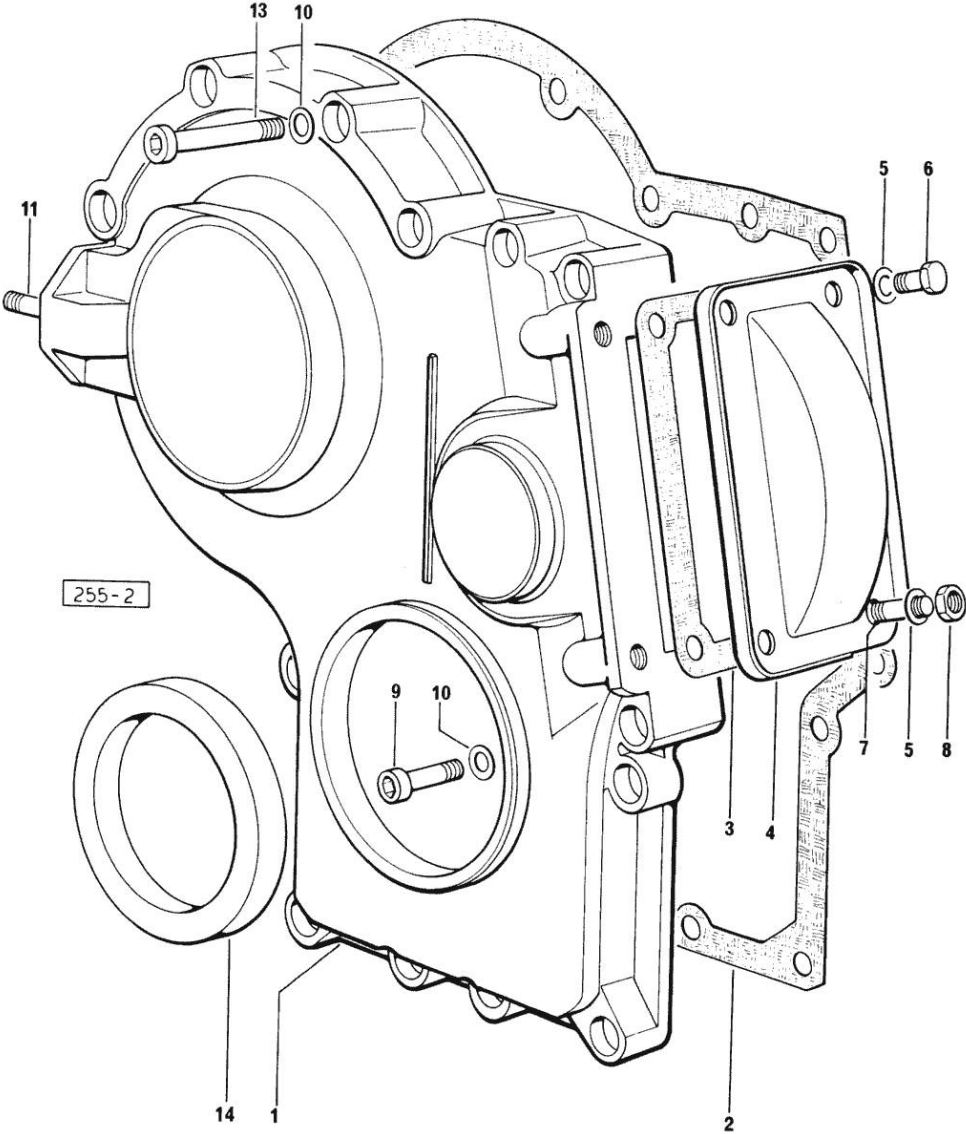
Section: ENGINE
CRANKCASE



| Fig. | P/n | QTY | Name |
|------|-----------------|-----|-------------------------------|
| 35 | 2.3130.002.1 | 2 | plug 1/4" gas |
| 36 | 2.3130.003.1 | 2 | plug 3/8" gas |
| 37 | 2.1324.011.0 | 1 | plug X 1000.4 W |
| 38 | 2.0112.511.1 | 8 | screw m 14 p.2 x 30 |
| 39 | 2.0432.255.7 | 2 | stud bolt m 12 p.1.75-1.25x25 |
| 40 | 2.1651.912.0 | 2 | cylindrical plug 12x28 |
| 41 | 2.1651.917.0 | 1 | cylindrical plug 12x40 |
| 42 | 0.065.1156.0 | 2 | gasket |
| 43 | 0.065.1143.3 | 1 | body 1137<- |
| 43 | 0.065.1143.3/10 | 1 | body ->1138 - (...)<- |
| 44 | 2.1470.004.2 | 2 | lock washer 8 |
| 45 | 2.0312.219.2 | 2 | screw m 8 p.1.25x65 |
| 46 | 2.6859.074.2/10 | 1 | clamp ->1138 - (...)<- |
| 47 | 2.6850.006.0 | 2 | clamp 18-28 1137<- |
| 47 | 2.6859.072.2 | 1 | clamp ->1138 - (...)<- |
| 48 | 0.065.1165.2 | 1 | sediment bowl |
| 49 | 2.6859.073.2 | 2 | clamp ->1138 - (...)<- |
| 50 | 0.065.1166.0 | 1 | sleeve ->1138 - (...)<- |
| 51 | 0.065.1155.0 | 1 | old part number 1137<- |
| 51 | 0.065.1155.0/10 | 1 | tube ->1138 - (...)<- |
| 52 | 0.065.1157.0 | 1 | bracket |
| 53 | 2.1011.103.2 | 1 | nut m 6 p.1 |
| 54 | 2.1470.002.2 | 1 | lock washer 6 |
| 55 | 2.0112.004.2 | 1 | screw m 6 p.1 x 14 |

261-1 1

Section: ENGINE
TIMING CASE



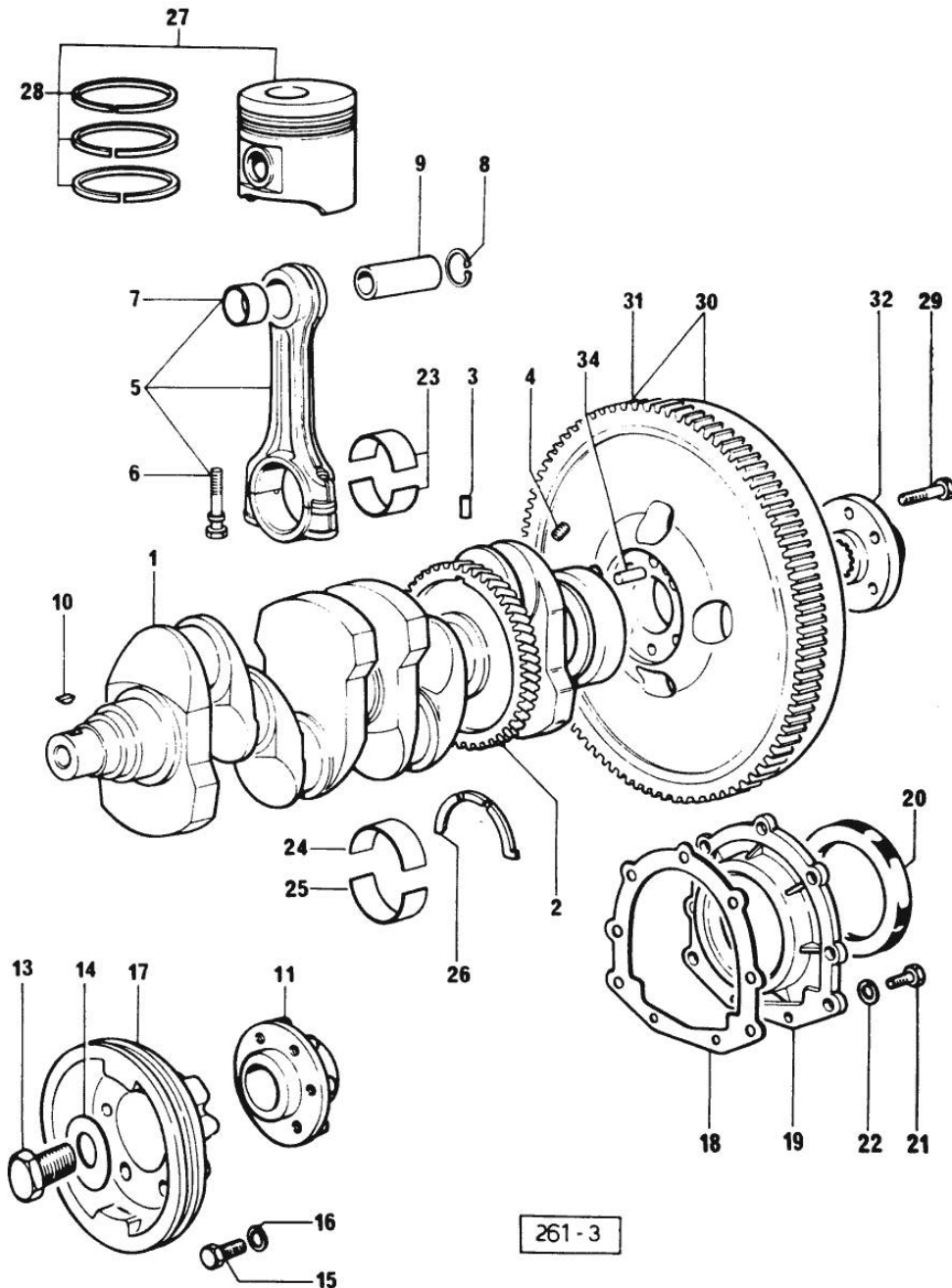
| Fig. | P/n | QTY | Name |
|------|-----|-----|------|
|------|-----|-----|------|

Notes:
[H 468]

| | | | |
|----|-----------------|----|----------------------------------|
| 1 | 0.065.1132.0/20 | 1 | guard |
| 2 | 0.065.1150.0/10 | 1 | gasket |
| 3 | 0.065.1152.0 | 1 | gasket |
| 4 | 0.065.1151.0 | 1 | cover |
| 5 | 2.1470.004.2 | 4 | lock washer 8 |
| 6 | 2.0112.205.2 | 2 | screw m 8 p.1.25 x 16 |
| 7 | 2.0432.001.7 | 2 | stud bolt m 8 p.1.25 - 1.00 x 16 |
| 8 | 2.1011.405.2 | 2 | nut m 8 p.1 |
| 9 | 2.0312.208.1 | 8 | screw m 8 p.1.25 x 25 |
| 10 | 2.1480.014.1 | 15 | washer 8 |
| 11 | 2.0439.154.1 | 2 | old part number |
| 13 | 2.0312.214.1 | 7 | screw m 8 p.1.25 x 40 |
| 14 | 2.1529.072.0 | 1 | oil seal |

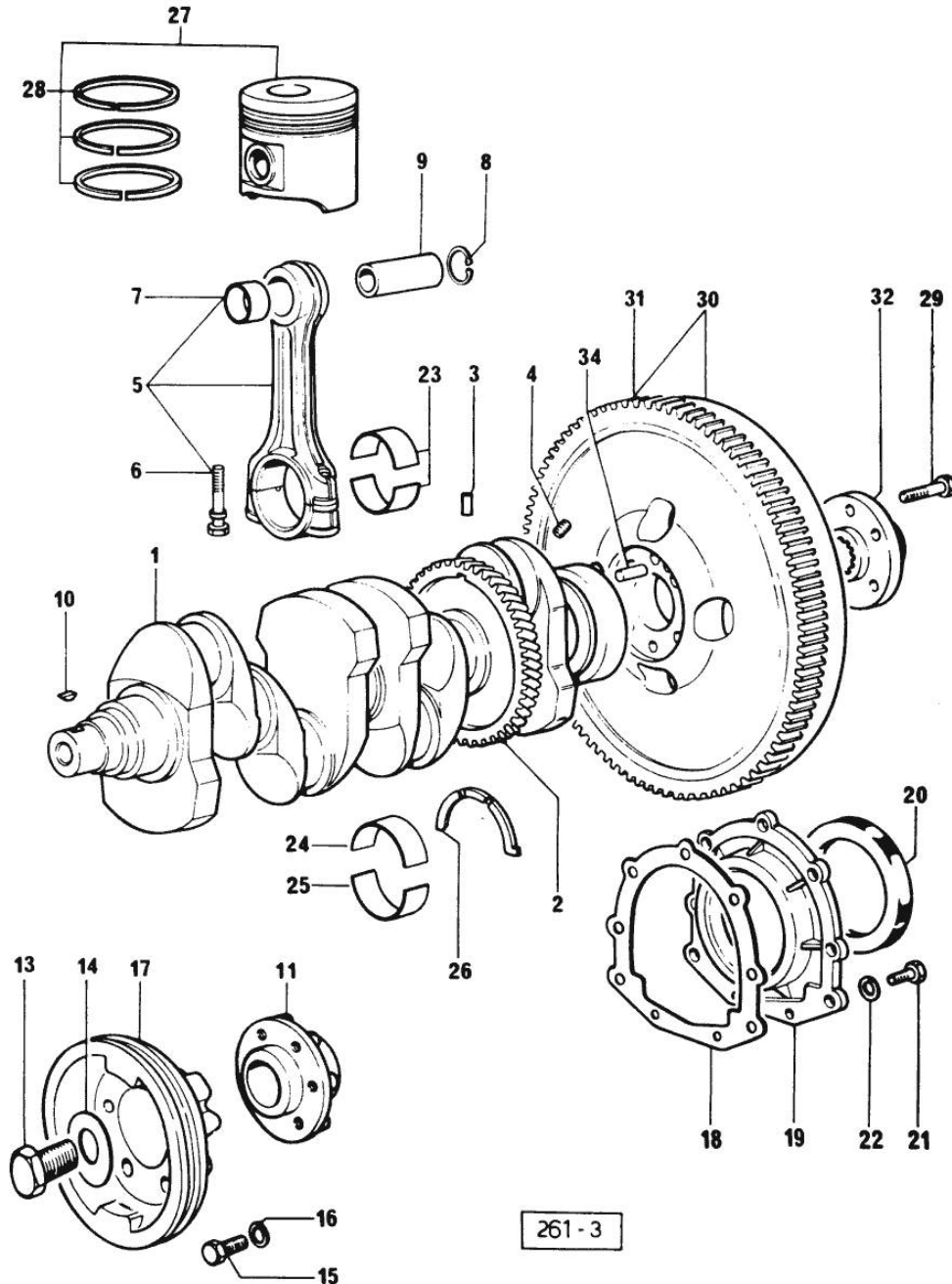
Section: ENGINE

CRANKSHAFT



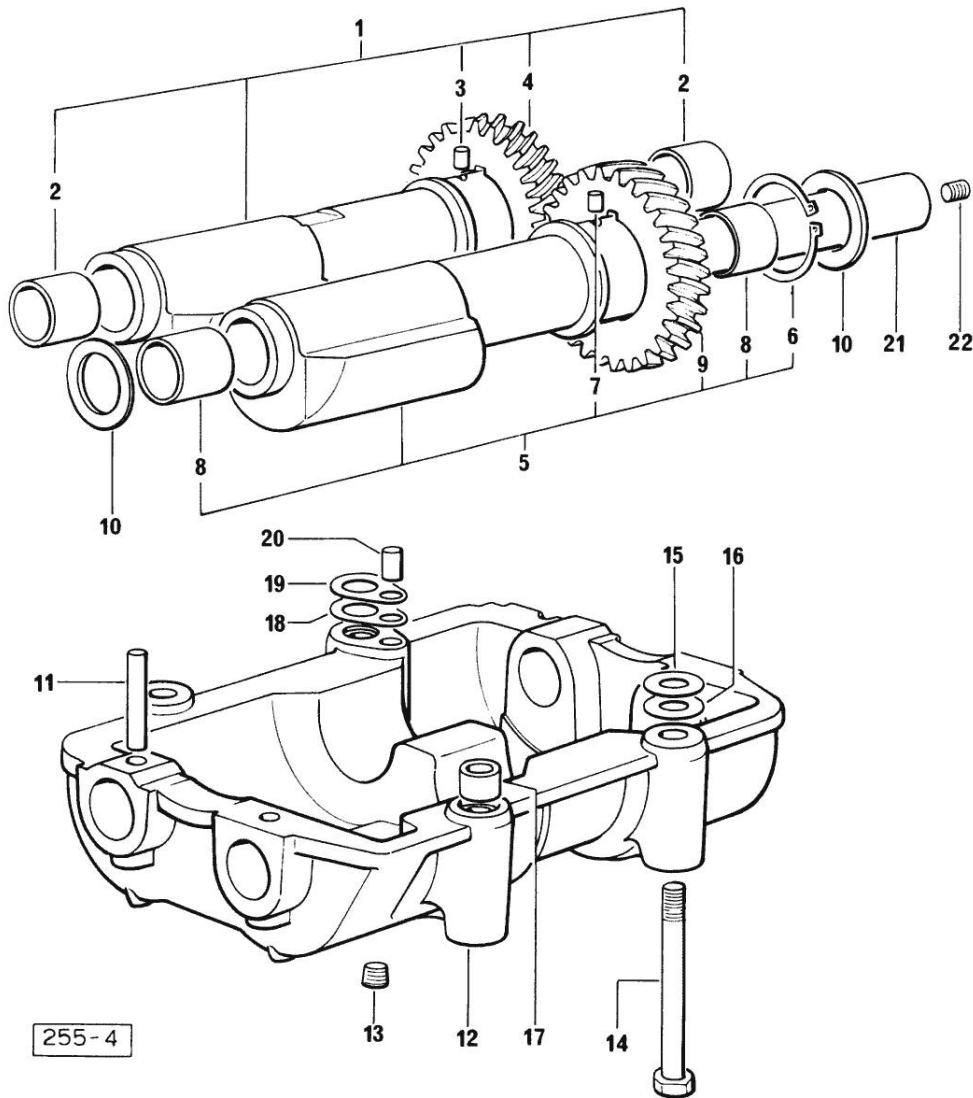
| Fig. | P/n | QTY | Name |
|---------------|-----------------|-----|--|
| Notes: | | | |
| [H 468] | | | |
| 1 | 0.065.1210.3/20 | 1 | old part number 2624<= |
| 1 | 0.066.1210.3/20 | 1 | crankshaft =>2625 X 916.4W |
| 1 | 0.086.1210.3 | 1 | crankshaft X 1000.4 W |
| 2 | 0.065.1211.0/10 | 1 | crown wheel |
| 3 | 2.1630.611.0 | 1 | roll pin 6 x 24 |
| 4 | 2.3130.001.1 | 4 | plug 1/8" gas |
| 5 | 0.065.1220.3/10 | 4 | engine connecting rod X 916.4W |
| 5 | 0.078.1220.3/10 | 4 | engine connecting rod - X 1000.4 W X 1000.4 W |
| 6 | 2.0139.021.0 | 8 | screw |
| 7 | 0.065.1227.0 | 4 | special bushing |
| 7 | 2.1559.114.0/10 | 4 | special bushing X 1000.4 W |
| 8 | 2.1411.013.1 | 8 | circlip 32 X 916.4W |
| 8 | 2.1411.014.1 | 8 | circlip 35 X 1000.4 W |
| 9 | 0.065.1236.0 | 4 | piston pin X 916.4W |
| 9 | 0.078.1236.0 | 4 | piston pin Ø 18 / Ø 35 / L = mm 86 X 1000.4 W |
| 10 | 2.1720.006.0 | 2 | key 4x6.5 |
| 11 | 0.065.1248.0/10 | 1 | hub |
| 13 | 2.0399.095.2/10 | 1 | screw |
| 14 | 2.1599.503.2 | 1 | shoulder ring |
| 15 | 2.0112.317.2 | 6 | screw m 10 p.1.5 x 45 |
| 15 | 2.0112.320.2 | 6 | screw m 10 p.1.5 x 55 |
| 15 | 2.0112.322.2 | 6 | screw m 10 p.1.5x65 |
| 16 | 2.1470.006.2 | 6 | lock washer 10 |
| 17 | 0.066.1244.0 | 1 | pulley 2630<= |
| 17 | 0.066.1244.0/10 | 1 | pulley =>2631 |
| 17 | 0.075.1252.0 | 1 | pulley 70x188x77,7 - FOR MODELS WITH UNDER ROOF AIR CONDITIONING |
| 18 | 0.065.1254.0 | 1 | gasket |

CRANKSHAFT



| Fig. | P/n | QTY | Name |
|------|-----------------|-----|---|
| 19 | 0.065.1253.0/10 | 1 | cover |
| 20 | 2.1529.073.0 | 1 | special oil seal 110x130x13 |
| 21 | 2.0112.207.2 | 9 | screw m 8 p 1.25 x 20 |
| 22 | 2.1474.009.2 | 9 | spring washer 8 |
| 23 | 0.065.1225.0 | 8 | con.rod half bushing STANDARD - A = 28.75 -> 29.00 |
| 23 | 0.065.1225.7 | 8 | con.rod half bushing - mm 0.25 |
| 23 | 0.065.1225.8 | 8 | con.rod half bushing - mm 0.50 |
| 24 | 0.065.1215.0 | 5 | main half bushing STANDARD |
| 24 | 0.065.1215.7 | 5 | main half bushing - mm 0.25 |
| 24 | 0.065.1215.8 | 5 | main half bushing - mm 0.50 |
| 25 | 0.065.1216.0 | 5 | main half bushing |
| 25 | 0.065.1216.7 | 5 | main half bushing - mm 0.25 |
| 25 | 0.065.1216.8 | 5 | main half bushing - mm 0.50 |
| 26 | 0.065.1218.0 | 4 | shim STANDARD |
| 26 | 0.065.1218.7 | 4 | shim + mm 0.10 |
| 26 | 0.065.1218.8 | 4 | shim + mm 0.15 |
| 27 | 0.065.0060.6 | 4 | complete piston X 916.4W |
| 27 | 0.085.0060.6 | 4 | complete piston X 1000.4 W |
| 28 | 0.065.0052.6 | 1 | piston ring set X 916.4W |
| 28 | 0.085.0052.6 | 1 | piston ring set X 1000.4 W |
| 29 | 2.0139.022.2 | 6 | screw m 12 p.1.25x55 |
| 30 | 0.065.1247.3 | 1 | flywheel 488<= |
| 30 | 0.065.1247.3/30 | 1 | flywheel =>489 - 838<= ORDER ALSO: 1x 0.255.2320.3/10 - 6x 2.0112.207.2 - 6x 2.1474.009.1 - 3x 2.1699.173.0 |
| 31 | 0.065.1242.0 | 1 | crown wheel Z = 123 |
| 32 | 0.255.2525.0/10 | 1 | flange |
| 34 | 2.1652.915.0 | 1 | cylindrical plug 12x35 |

Section: ENGINE
COUNTERWEIGHTS



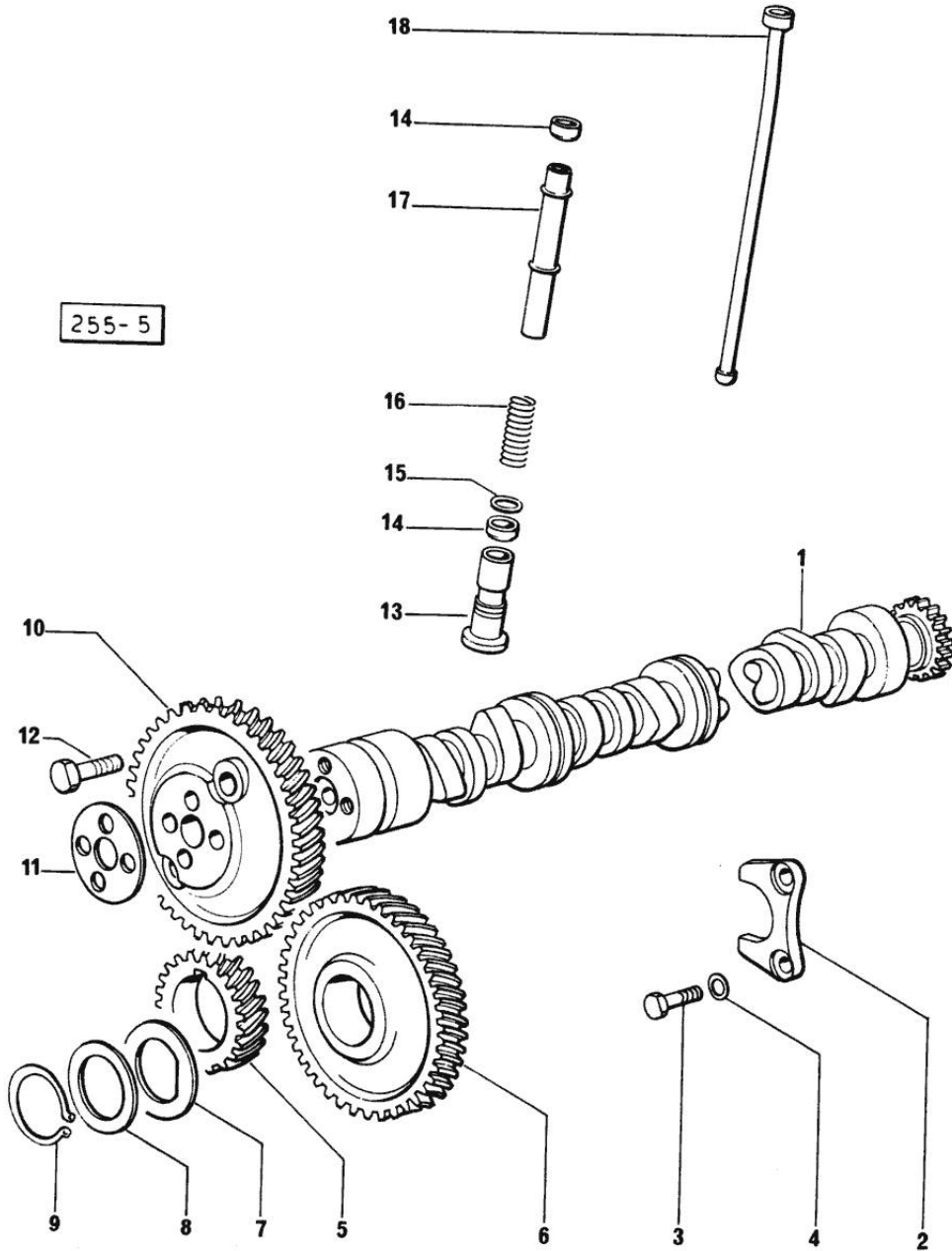
| Fig. | P/n | QTY | Name |
|------|-----|-----|------|
|------|-----|-----|------|

Notes:
 [H 468]

| | | | |
|----|-----------------|---|---------------------------|
| 1 | 0.086.1233.3/10 | 1 | mass |
| 2 | 2.1559.115.0 | 2 | special bushing 26x30x30 |
| 3 | 2.1652.302.0 | 1 | roll pin 4x6 |
| 4 | 0.065.1237.0/10 | 1 | gear |
| 5 | 0.065.1233.3/10 | 1 | mass |
| 6 | 2.1410.018.1 | 1 | circlip 45 |
| 7 | 2.1652.302.0 | 1 | roll pin 4x6 |
| 8 | 2.1559.115.0 | 2 | special bushing 26x30x30 |
| 9 | 0.065.1238.0 | 1 | gear |
| 10 | 2.1589.185.0 | 4 | shoulder ring 26.1x34x1 |
| 11 | 2.1631.717.0 | 2 | roll pin 8 x 40 |
| 12 | 0.086.1231.3 | 1 | old part number |
| 13 | 2.3130.001.1 | 1 | plug 1/8" gas |
| 14 | 2.0112.427.2 | 4 | screw m 12 p.1.75 x 90 |
| 15 | 2.1589.048.0 | 2 | shoulder ring 16.5x26x0.3 |
| 15 | 2.1589.049.0 | 2 | shoulder ring 12.5x26x0.3 |
| 16 | 2.1579.628.0 | 2 | spacer 16.5x26x0.1 |
| 16 | 2.1579.629.0 | 2 | spacer 12.5x26x0.1 |
| 17 | 2.1579.626.0 | 2 | spacer 13.2x16x11 |
| 18 | 2.1589.139.0 | 2 | shoulder ring mm 0.3 |
| 19 | 2.1589.140.0 | 2 | shoulder ring mm 0.1 |
| 20 | 2.1699.191.0 | 1 | bush 7x10x16 |
| 21 | 0.065.1234.3 | 2 | old part number |
| 22 | 2.3130.001.1 | 2 | plug 1/8" gas |

Section: ENGINE

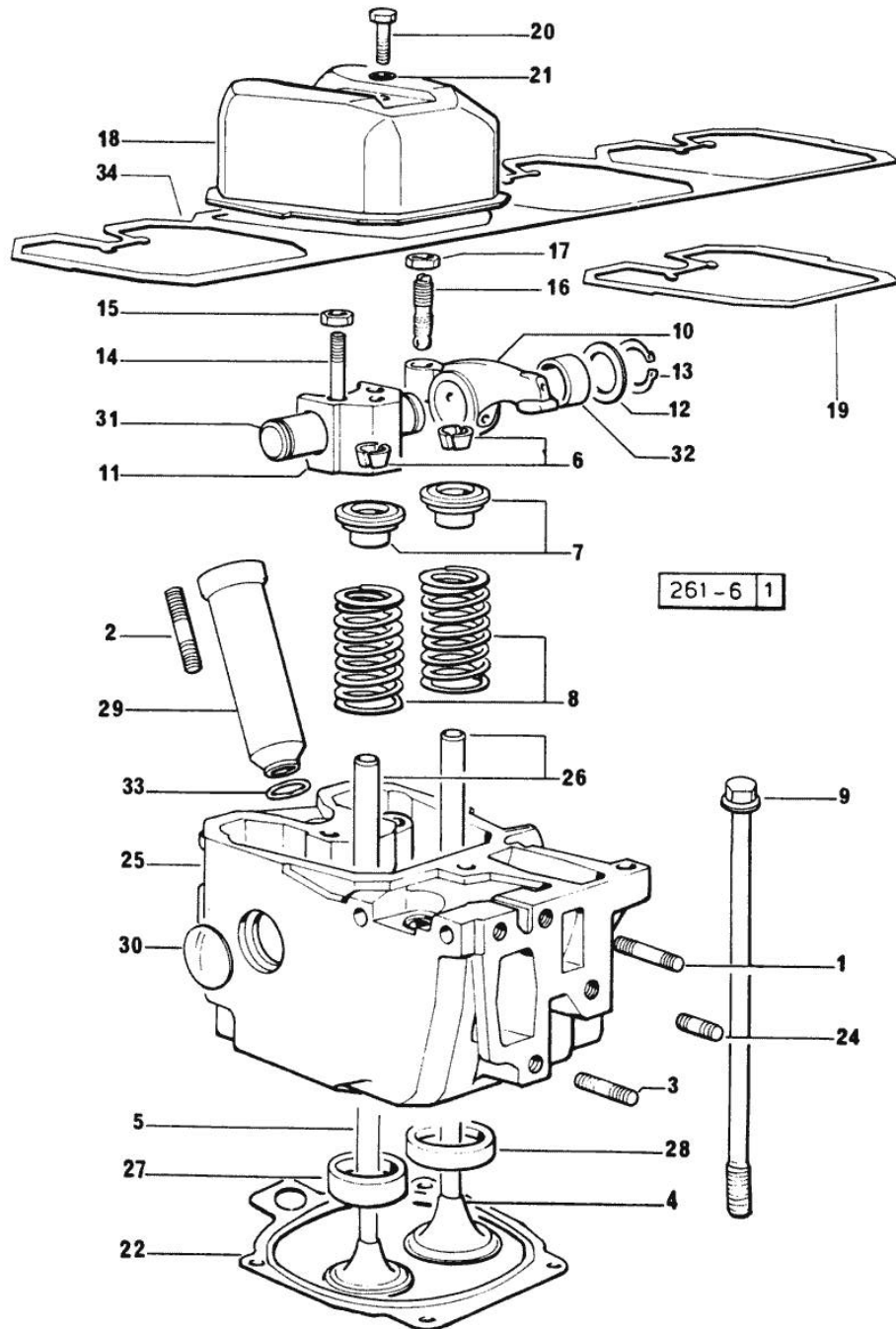
CAMSHAFT



| Fig. | P/n | QTY | Name |
|------|-----|-----|------|
|------|-----|-----|------|

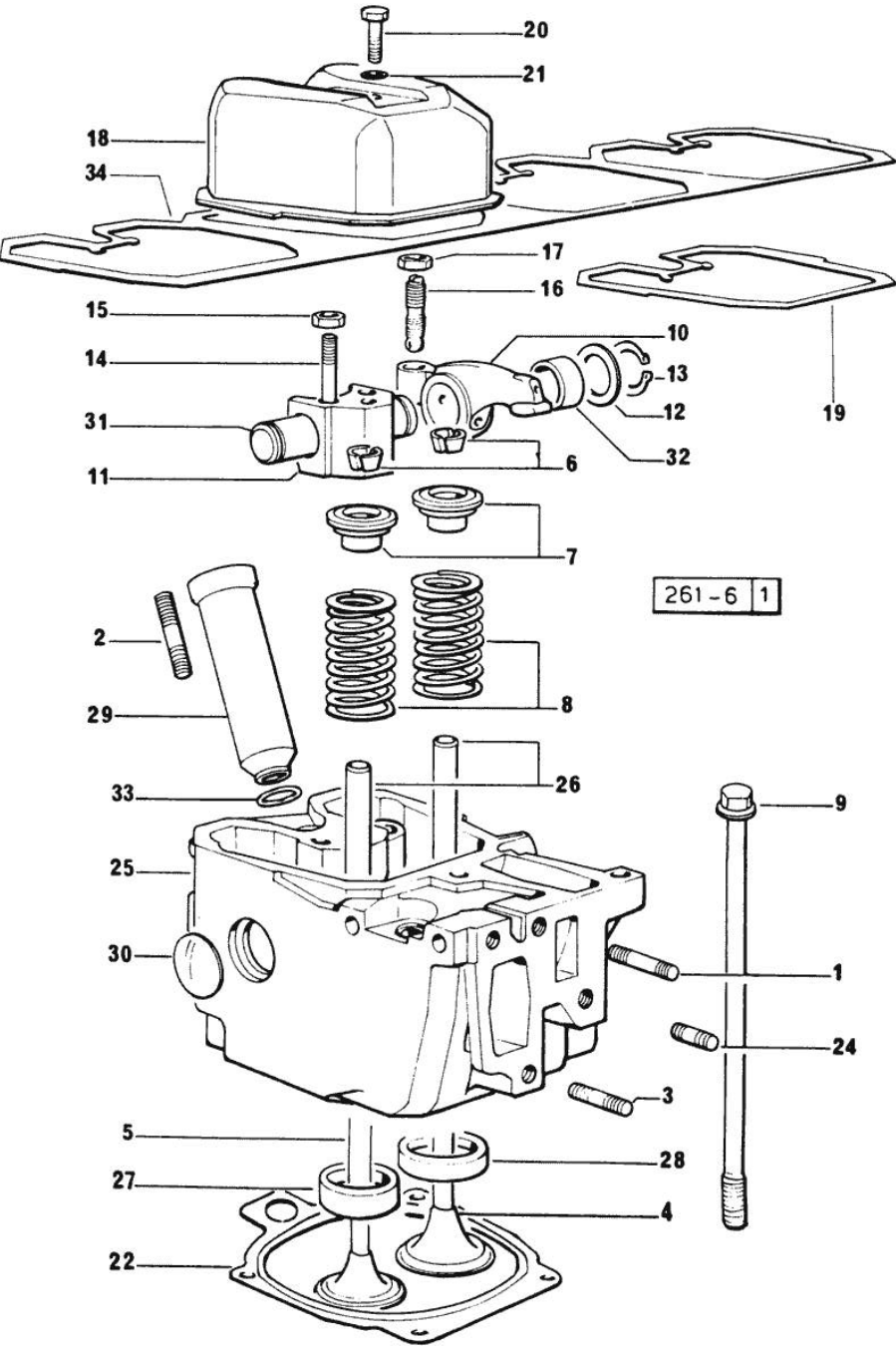
Notes:
[H 468]

| | | | |
|----|-----------------|----|---------------------|
| 1 | 0.065.1324.0 | 1 | gear |
| 1 | 0.066.1310.3/20 | 1 | camshaft |
| 2 | 0.065.1353.0 | 1 | small plate |
| 3 | 2.0312.205.2 | 2 | screw |
| 4 | 2.1480.014.1 | 2 | washer 8 |
| 5 | 0.065.1323.0/20 | 1 | gear Z = 29 |
| 6 | 0.065.1325.3/20 | 1 | gear Z = 57 |
| 6 | 2.1559.185.0/10 | 1 | bushing |
| 7 | 065.1351.0 | 2 | - |
| 8 | 0.065.1352.0 | 1 | shim |
| 9 | 2.1410.016.1 | 1 | circlip 40 |
| 10 | 0.065.1354.0/10 | 1 | gear z=58 |
| 11 | 0.065.1350.0 | 1 | small disc |
| 12 | 2.0132.207.2 | 4 | screw m 10 p.1 x 25 |
| 13 | 0.065.1330.0 | 8 | tappets |
| 14 | 2.1569.114.0 | 16 | gasket |
| 15 | 2.1599.437.0 | 8 | shoulder ring |
| 16 | 2.4019.300.1 | 8 | spring |
| 17 | 0.065.1332.0 | 8 | sleeve |
| 18 | 0.065.1331.2 | 8 | rod |

Section: ENGINE
CYLINDER HEAD


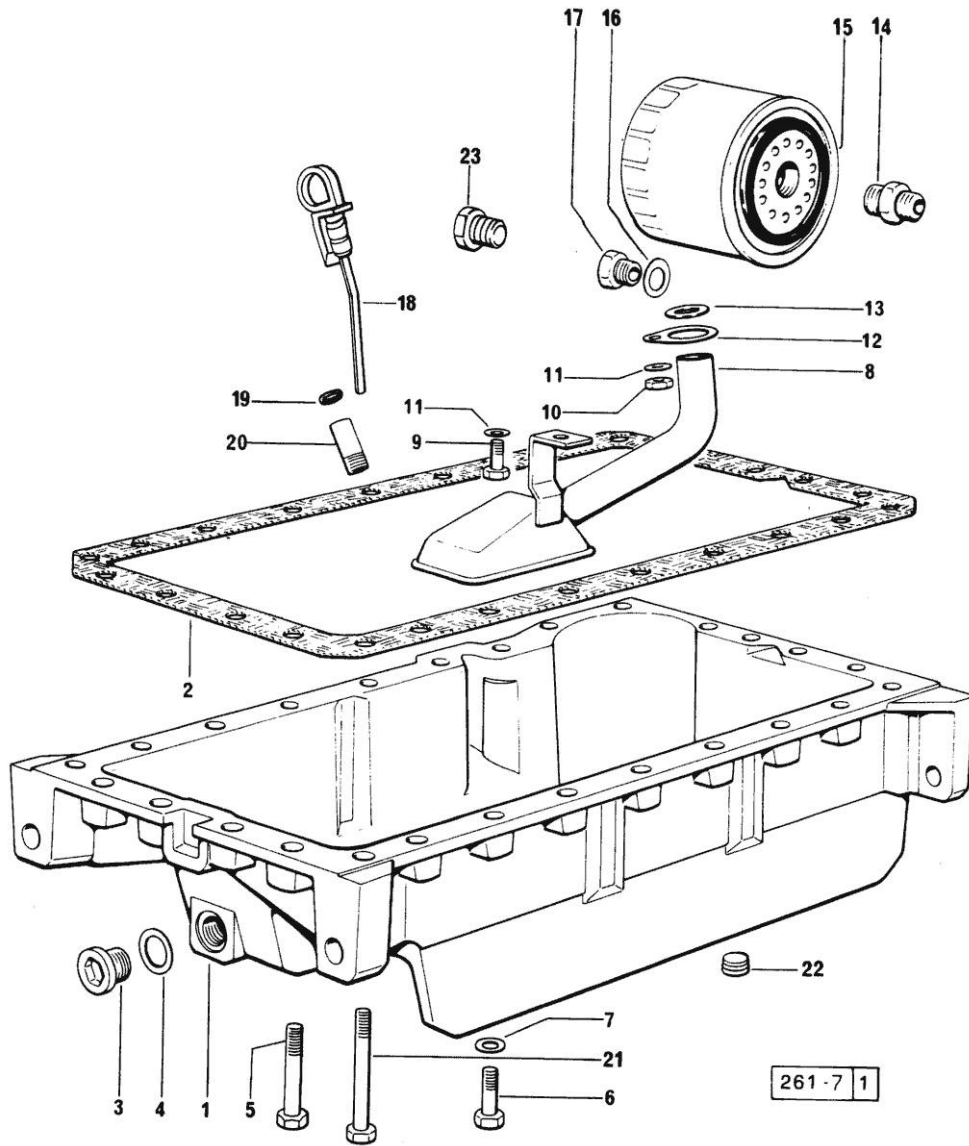
| Fig. | P/n | QTY | Name |
|---------------|-----------------|-----|--|
| Notes: | | | |
| [H 468] | | | |
| 1 | 2.0432.011.7 | 4 | stud bolt m 8 p.1.25 / p.1 x 40 |
| 2 | 2.0432.161.7 | 4 | stud bolt m 10 p.1.5 / p.1.25 x 40 |
| 3 | 2.0432.007.7 | 8 | stud bolt m 8 p.1.25 / p.1 x 30 |
| 4 | 0.066.1420.0 | 4 | inlet valve Ø mm 9 X 916.4W |
| 4 | 0.078.1420.0 | 4 | inlet valve X 1000.4 W |
| 5 | 0.066.1421.0 | 4 | exhaust valve |
| 6 | 0.074.1423.0 | 8 | conical valve cotter |
| 7 | 0.066.1425.0 | 8 | cup |
| 8 | 2.4019.287.0 | 8 | spring |
| 9 | 0.066.1443.0/10 | 16 | screw |
| 10 | 0.066.1432.0 | 8 | rocker arm |
| 11 | 0.066.1430.0 | 4 | support |
| 12 | 2.1599.432.0 | 8 | shoulder ring |
| 13 | 2.1410.055.1 | 8 | circlip 19 |
| 14 | 2.0432.163.7 | 8 | stud bolt m 10 p.1.5 / p.1.25 x 45 |
| 15 | 2.1011.421.2 | 8 | nut m 10 p.1.25 |
| 16 | 0.021.1434.0 | 8 | screw |
| 17 | 2.1011.405.2 | 8 | nut m 8 p.1 |
| 18 | 0.066.1440.0/10 | 4 | small cap |
| 19 | 0.066.1450.0 | 4 | tappet gasket |
| 20 | 2.0112.211.2 | 4 | screw m 8 p.1.25 x 30 |
| 21 | 2.1560.204.0 | 4 | gasket |
| 22 | 0.078.1451.0/10 | 4 | gasket mm 1.20 (...) <= ORDER ALSO: 1x 2.1559.188.0 |
| 22 | 0.078.1452.0/10 | 4 | gasket mm 1.40 (...) <= ORDER ALSO: 1x 2.1559.188.0 |
| 22 | 0.078.1453.0/10 | 4 | gasket mm 1.60 (...) <= ORDER ALSO: 1x 2.1559.188.0 |
| 24 | 2.0432.005.7 | 4 | stud bolt m 8 p.1.5 / p.1 x 25 |
| 25 | 0.066.1410.3/40 | 4 | old part number X 916.4W |
| 25 | 0.078.1410.3/40 | 4 | old part number X 1000.4 W |
| 26 | 0.066.1416.0 | 8 | valve guide |
| 27 | 0.066.1427.0 | 4 | valve seat |
| 28 | 0.066.1426.0 | 4 | valve seat |
| 29 | 0.066.1413.0 | 4 | bush |
| 30 | 2.3170.012.1 | 8 | expansion plug 30 |
| 31 | 0.066.1431.0 | 4 | pin |

Section: ENGINE
CYLINDER HEAD



| Fig. | P/n | QTY | Name |
|------|-----------------|-----|-----------------------|
| 32 | 2.1559.021.0/40 | 8 | bushing 15x19x22 |
| 33 | 2.1530.056.0 | 4 | oil seal 21.82 x 3.53 |
| 34 | 0.065.1450.0 | 1 | old part number |

Section: ENGINE
LUBRICATION

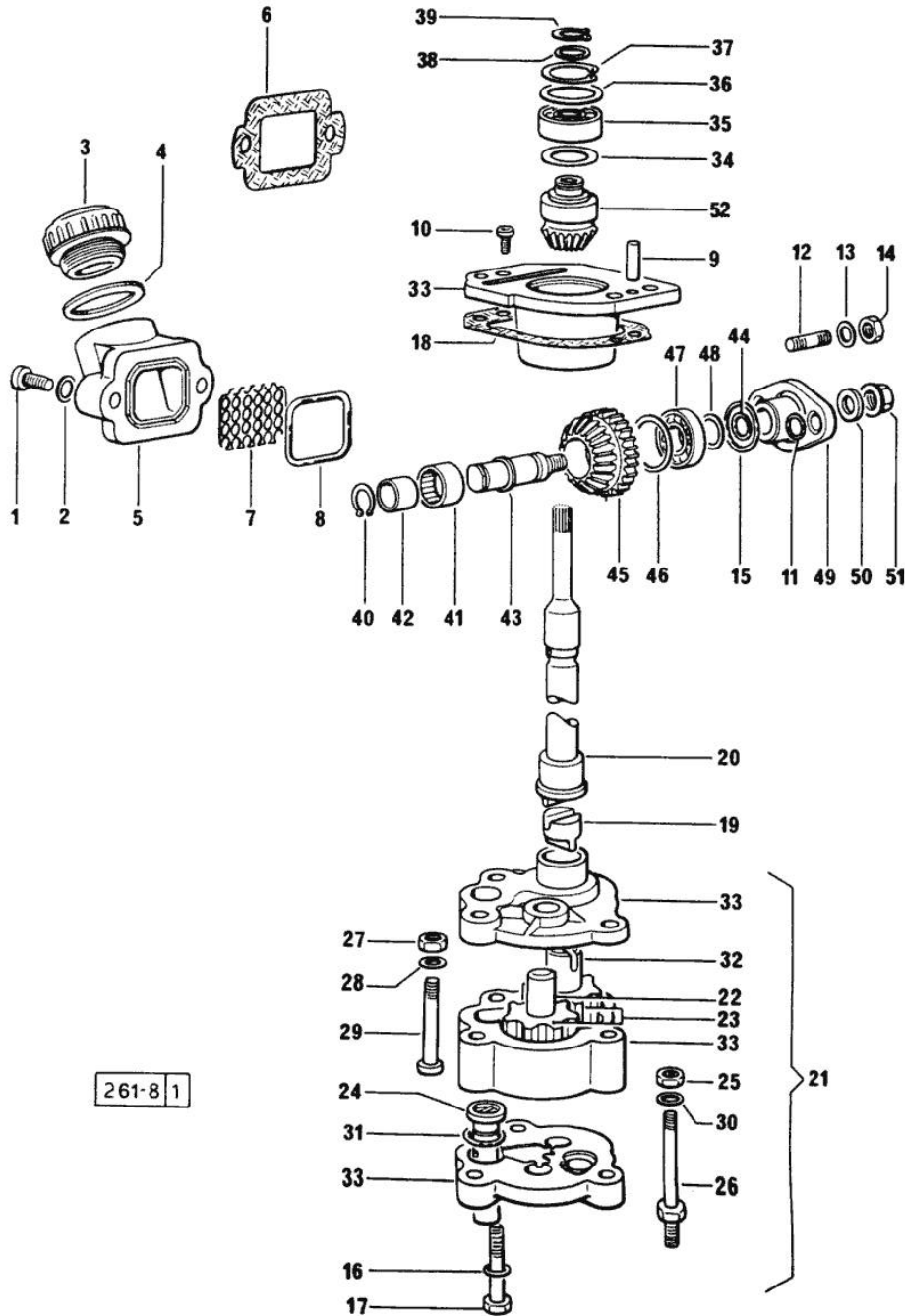


| Fig. | P/n | QTY | Name |
|------|-----|-----|------|
|------|-----|-----|------|

Notes:
[H 468]

| | | | |
|----|-----------------|----|---|
| 1 | 0.065.1510.0/20 | 1 | oil sump |
| 2 | 0.065.1550.0 | 1 | gasket |
| 3 | 2.3199.001.2 | 1 | plug 1/2" gas |
| 4 | 2.1560.054.0 | 1 | gasket 21 x 26 |
| 5 | 2.0112.227.2 | 9 | screw m 8 p.1.25 x 90 |
| 6 | 2.0112.215.2 | 17 | screw m 8 p.1.25 x 40 |
| 7 | 2.1470.004.2 | 26 | lock washer 8 |
| 8 | 0.065.1531.3 | 1 | tube |
| 9 | 2.0112.205.2 | 1 | screw m 8 p.1.25 x 16 |
| 10 | 2.1011.105.2 | 1 | nut m 8 p.1.25 |
| 11 | 2.1470.004.2 | 2 | lock washer 8 |
| 12 | 0.065.1538.0 | 1 | flange |
| 13 | 2.1539.040.0 | 1 | special oil seal 21.82 x 3.53 |
| 14 | 2.3339.307.1/10 | 1 | old part number |
| 15 | 0.044.1567.0 | 1 | oil filter element |
| 16 | 2.1560.014.0 | 1 | washer 18.2 x 24 |
| 17 | 2.3339.353.2 | 1 | pipe fitting |
| 17 | 2.3339.353.2/10 | 1 | pipe fitting 12 p.1.5-18 p.1.5 =>10120 |
| 18 | 0.066.1513.2/10 | 1 | dipstick mm 106 |
| 19 | 2.1539.065.0 | 2 | special oil seal 8.73 x 1.78 |
| 20 | 0.066.1551.0 | 1 | spacer |
| 21 | 2.0112.235.2 | 3 | screw m 8 p.1.25 x 130 |
| 22 | 2.3130.003.1 | 2 | plug 3/8" gas X 1000.4 W |
| 23 | 2.3110.302.1 | 1 | plug m 12 p.1.75 x 10 10119<= |
| 23 | 2.3110.402.1 | 1 | plug m 12 p.1.5x10 =>10120 |

Section: ENGINE
LUBRICATION 1435 <=



| Fig. | P/n | QTY | Name |
|------|-----|-----|------|
|------|-----|-----|------|

Notes:
 [H 468]

| | | | |
|----|-----------------|---|----------------------------------|
| 1 | 2.0312.205.2 | 2 | screw |
| 2 | 2.1480.014.1 | 2 | washer 8 |
| 3 | 0.041.1135.4 | 1 | plug 1" gas |
| 4 | 2.1569.072.0 | 1 | gasket 32 x 39.5 x 2 |
| 5 | 0.065.1565.0/10 | 1 | pipe union |
| 6 | 0.065.1566.0 | 1 | gasket |
| 7 | 0.065.1567.0/10 | 1 | filter |
| 8 | 2.1539.042.0 | 1 | special oil seal 47.35x1.78 |
| 9 | 2.1652.711.0 | 2 | cylindrical plug 8x25 |
| 10 | 2.0169.005.2 | 2 | screw m 6 p.1 x 12 |
| 11 | 2.1530.016.0 | 2 | oil seal 8.73 x 1.78 |
| 12 | 2.0439.151.2 | 2 | stud bolt |
| 13 | 2.1470.004.2 | 2 | lock washer 8 |
| 14 | 2.1011.405.2 | 2 | nut m 8 p.1 |
| 15 | 2.1530.053.0 | 1 | oil seal 20.35x1.78 |
| 16 | 2.1470.006.2 | 2 | lock washer 10 |
| 17 | 2.0112.324.2 | 2 | screw m 10 p.1.5x75 |
| 18 | 0.065.1560.0 | 1 | old part number |
| 19 | 0.065.1562.0 | 1 | joint |
| 20 | 0.065.1569.0 | 1 | shaft |
| 21 | 9.06699.42.2 | 1 | old part number |
| 22 | 0.066.1529.0/10 | 1 | small shaft |
| 23 | 0.066.1521.0/20 | 2 | gear |
| 24 | 0.065.1552.3/30 | 1 | valve |
| 25 | 2.1011.105.2 | 1 | nut m 8 p.1.25 |
| 26 | 2.0399.119.2 | 1 | screw |
| 27 | 2.1011.103.2 | 1 | nut m 6 p.1 |
| 28 | 2.1480.012.1 | 1 | washer 6, d128 |
| 29 | 2.0312.115.1 | 1 | screw m 6 p.1x45 |
| 30 | 2.1480.014.1 | 1 | washer 8 |
| 31 | 2.1539.041.0 | 1 | special oil seal |
| 32 | 0.066.1528.0/10 | 1 | pin |
| 33 | 0.000.0000.1 | 1 | cannot be supplied |
| 34 | 2.1589.148.0 | 1 | shoulder ring 28.2 x 31.8 x 0.5 |
| 35 | 2.2020.001.0 | 1 | ball bearing 15 x 32 x 8.00 |
| 36 | 2.1589.149.0 | 1 | old part number |
| 36 | 2.1589.150.0 | 1 | shoulder ring 28.2 x 31.8 x 0.1 |
| 36 | 2.1589.151.0 | 1 | shoulder ring 28.2 x 31.8 x 0.15 |
| 37 | 2.1411.013.1 | 1 | circlip 32 |
| 38 | 2.1589.146.0 | 1 | shoulder ring 15.2 x 19 x 0.15 |
| 38 | 2.1589.147.0 | 1 | shoulder ring 15.2 x 19 x 0.10 |

Thank you so much for reading.
Please click the “Buy Now!”
button below to download the
complete manual.



After you pay.

You can download the most
perfect and complete manual in
the world immediately.

Our support email:

ebooklibonline@outlook.com