

Section: ENGINE
CRANKCASE

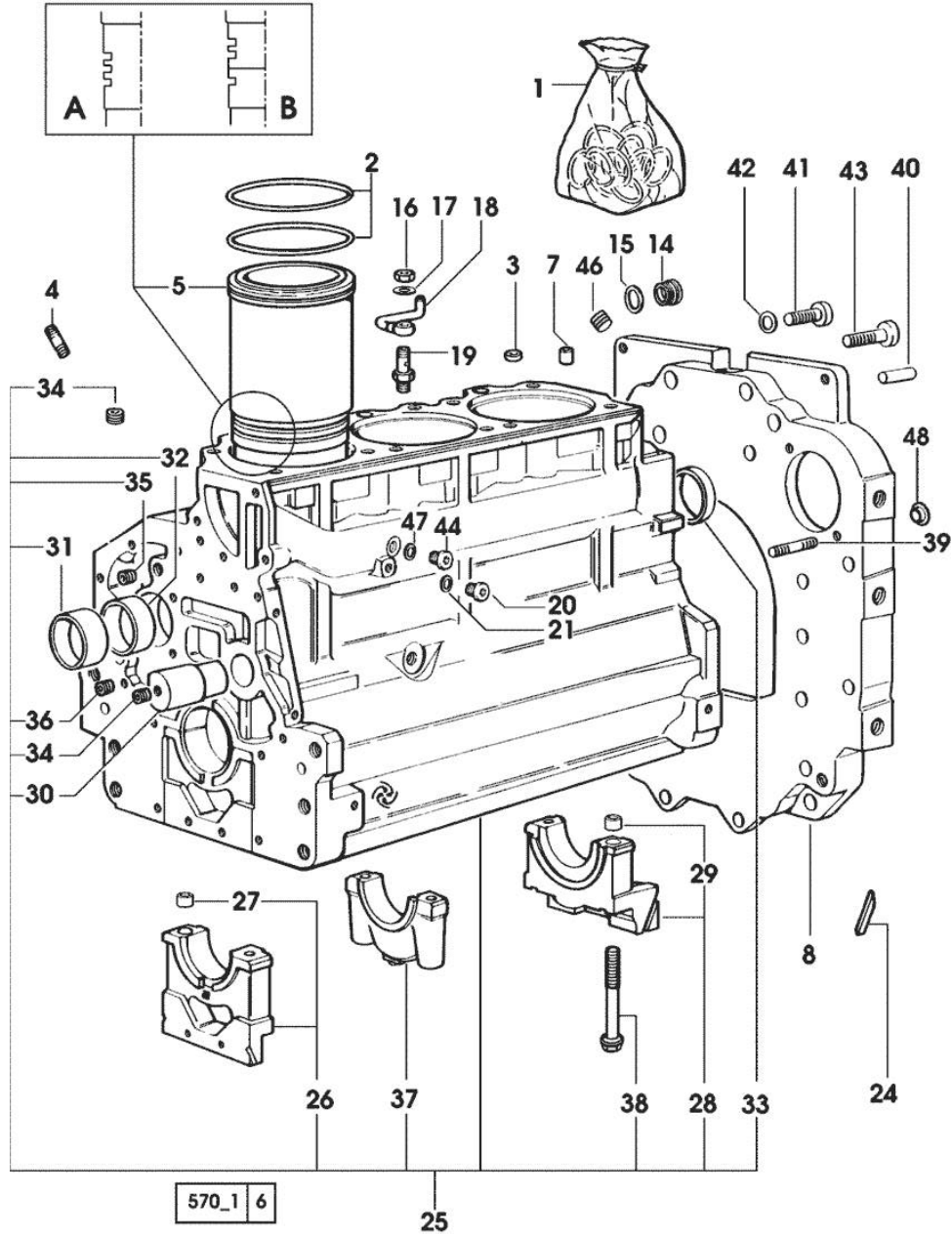


Fig.	P/n	QTY	Name
Notes: [H-476-XF]			
1	0.070.0050.6	1	gasket set - FOR ENGINE MOUNTING
2	2.1519.096.0/20	9	special oil seal 107.67x1.78 2012 <= => 2013
2	2.1539.193.0	6	special oil seal 107.62x2.62 => 2013
3	2.1559.188.2	3	bush 11.4 x 14 x16
4	2.0432.003.7	9	stud bolt m 8 p.1.25 / p.1 x 20
5	0.009.7500.0/10	3	engine cylinder 1465 <== A
5	0.011.0582.0	3	engine cylinder => 1466 - 2012 <== B
5	0.A12.2675.0	3	engine cylinder "A" => 2013
5	0.B12.2675.0	3	engine cylinder "B" => 2013
7	2.1549.154.2	3	bush 4.8x5.8x16
8	0.007.1414.0/10	1	flange * (...)<- N.1 2.3131.003.2
14	2.3199.405.2	1	plug m 28 p.1.5
15	2.1532.072.0	1	oil seal 26.70x1.78
16	2.1099.108.2	3	special nut m 10 p.1
17	2.1560.006.0	6	gasket 10.2 x 16
18	0.086.1550.2	3	sprayer nozzle
19	0.065.1160.3/20	3	valve
20	2.3199.292.0	1	plug 1/4" gas
21	2.1560.010.0	1	gasket 14.2 x 20
24	0.066.1152.0/10	4	gasket
25	0.070.1110.6/20	1	crankcase * 2012 <= - N.3 011.0183.0/10 - N.6 2.1539.193.0
26	0.065.1112.7	1	support
27	2.1699.165.0	1	bush 12.3x15x16
28	0.065.1116.3	1	support
29	2.1699.165.0	1	bush 12.3x15x16
30	0.066.1151.0	1	pin
31	0.065.1141.0	1	special bushing 59X55X30
32	0.065.1140.0	3	special bushing 59X55X20
33	2.3179.012.0	1	plug 60
34	2.3130.001.1	9	plug 1/8" gas

Section: ENGINE
CRANKCASE

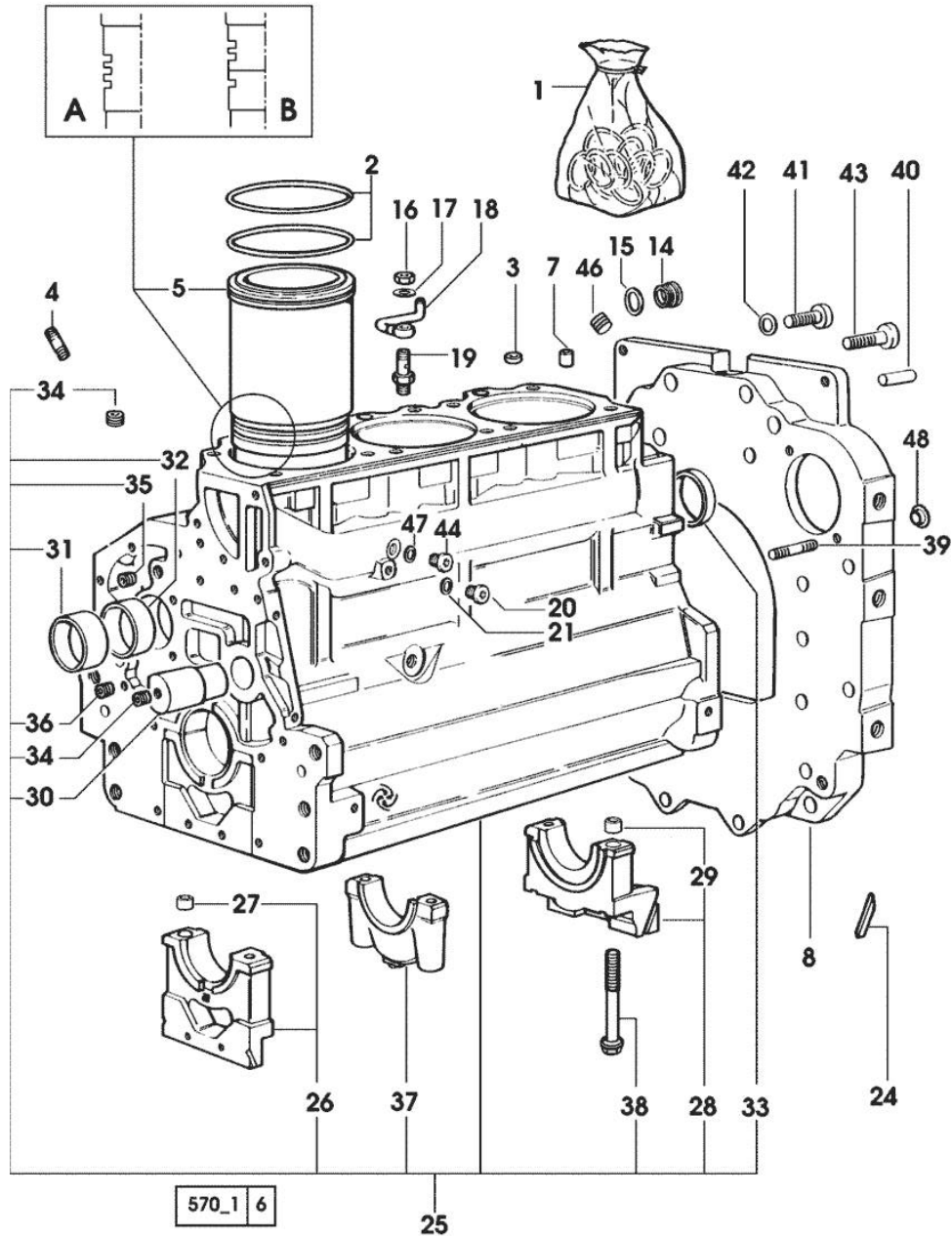


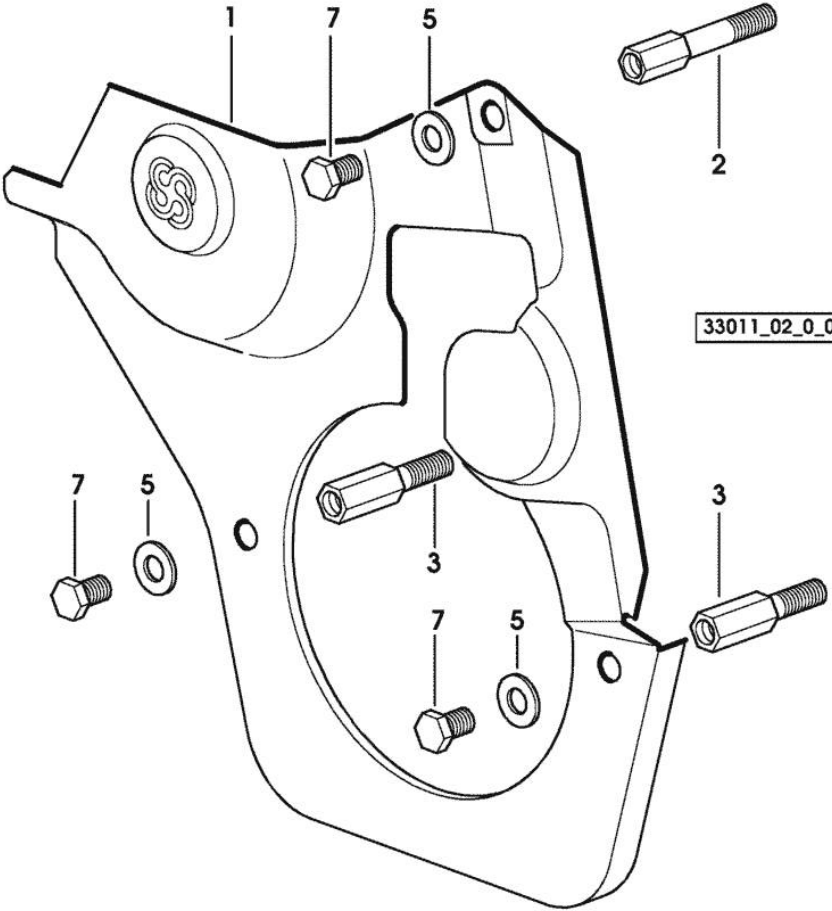
Fig.	P/n	QTY	Name
35	2.3130.002.1	2	plug 1/4" gas
36	2.3130.003.1	2	plug 3/8" gas
37	0.065.1114.0/10	2	support
38	0.065.1117.0	8	screw m 12 x 100
39	2.0432.255.7	1	stud bolt m 12 p.1.75-1.25x25
39	2.0439.250.7	1	stud bolt m 12 / m 10 x 30
40	2.1651.912.0	2	cylindrical plug 12x28
41	2.0312.516.1	2	screw m 14 p.2x50
42	2.1480.018.1	2	washer 14
43	2.0112.511.1	8	screw m 14 p.2 x 30
44	2.3120.101.0	1	plug m 18 p.1.5 => 2013
46	2.3131.003.2	1	plug m 16 p.1.5
47	2.1560.014.0	1	washer 18.2 x 24
48	0.011.9294.0/10	1	bush

Section: ENGINE
TIMING CASE

Fig.	P/n	QTY	Name
------	-----	-----	------

Notes:
[H-476-XF]

1	0.007.1262.3/50	1	guard
2	0.007.1271.0/10	1	small column m 8 p.1.25 / L = mm 60
3	0.007.1272.0/10	2	small column m 8 p.1.25 / L = mm 50
5	2.1310.004.2	3	flat washer 8.4x17
7	2.0112.205.2	3	screw m 8 p.1.25 x 16



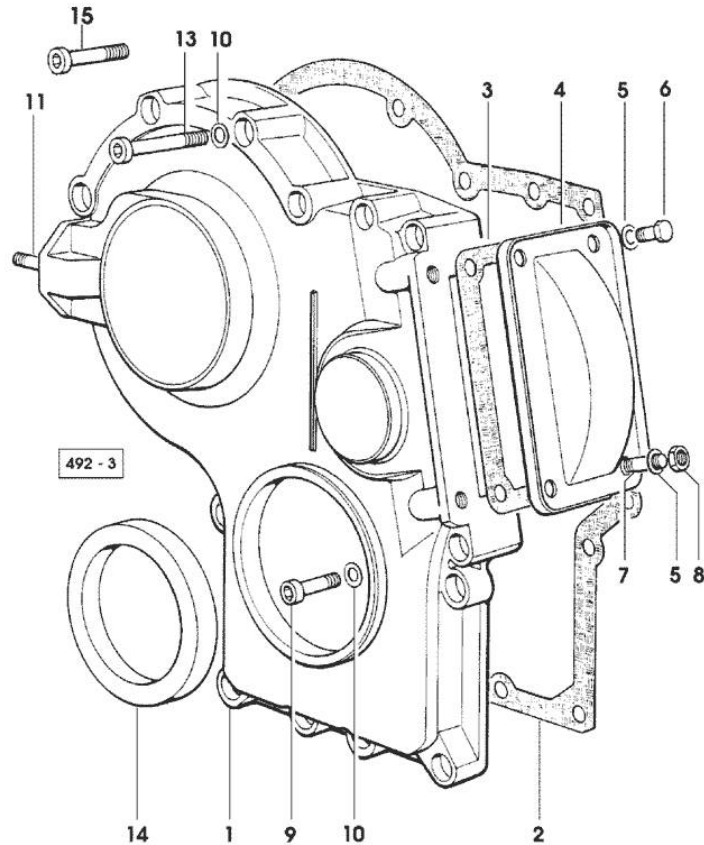
Section: ENGINE

TIMING CASE

Fig.	P/n	QTY	Name
------	-----	-----	------

Notes:

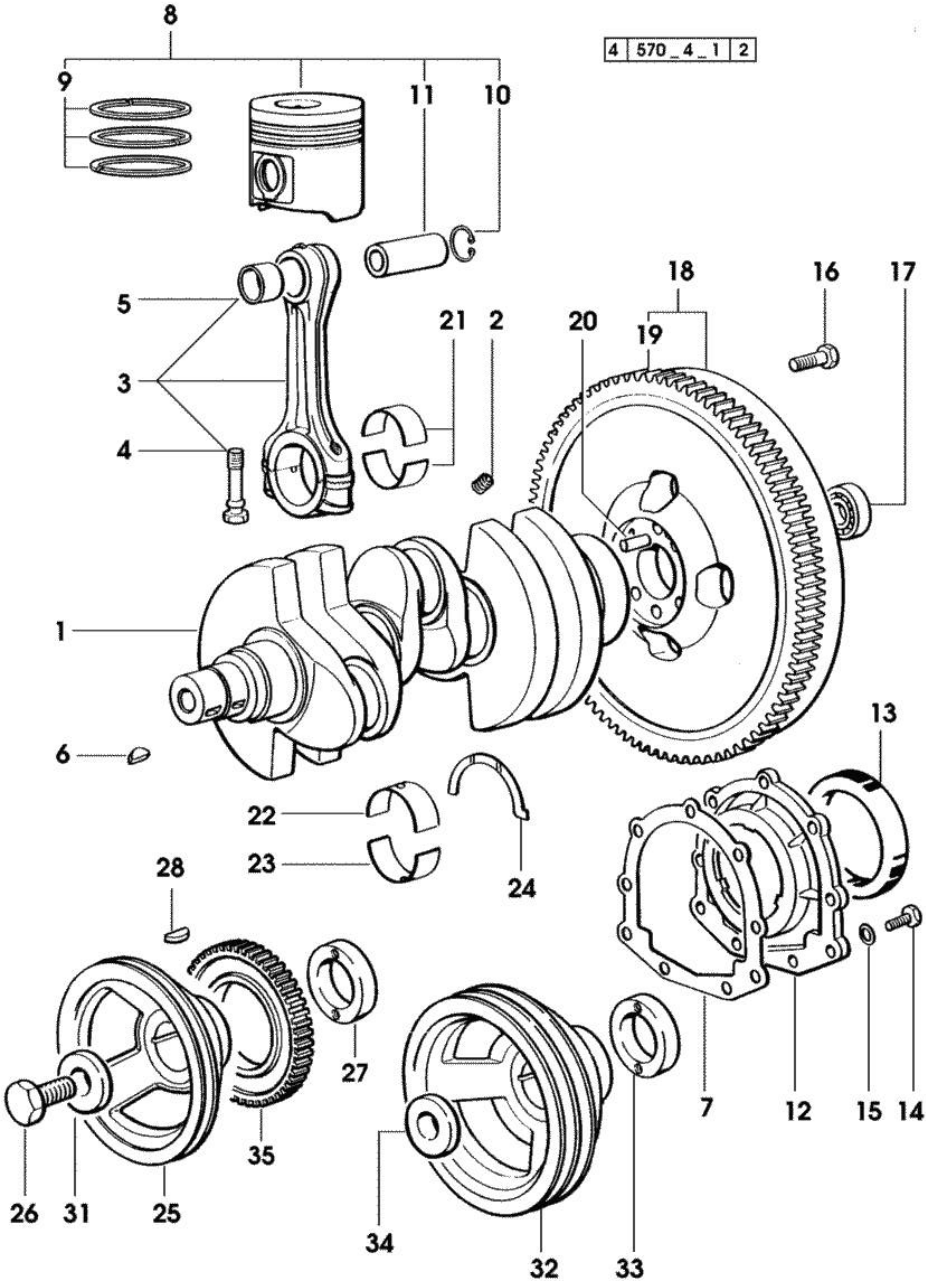
[H-476-XF]



1	0.065.1132.0/60	1	guard
2	0.065.1150.0/30	1	gasket
3	0.065.1152.0	1	gasket - X H 481 H 491 XF
4	0.065.1151.0	1	cover - X H 481 H 491 XF
5	2.1470.004.2	4	lock washer 8
6	2.0112.205.2	2	screw m 8 p.1.25 x 16
7	2.0432.005.7	2	stud bolt m 8 p.1.5 / p.1 x 25
8	2.1011.405.2	2	nut m 8 p.1
9	2.0312.208.2	8	screw m 8 p.1.25 x 25
10	2.1480.014.1	15	washer 8
11	2.0432.003.7	2	stud bolt m 8 p.1.25 / p.1 x 20
13	2.0312.214.2	7	screw m 8 p.1.25 x 40 - X H 476 H 481 H 491 XF
13	2.0312.219.2	4	screw m 8 p.1.25x65 - X H 361 XF
14	2.1529.141.0	1	special oil seal
15	2.0312.214.1	3	screw m 8 p.1.25 x 40 - X H 361 XF

Section: ENGINE
CRANKSHAFT

Fig.	P/n	QTY	Name
Notes: [H-476-XF]			
1	0.007.1554.0/20	1	crankshaft * 1410 <= - N.1 - 007.1711.0/10
2	2.3130.001.1	3	plug 1/8" gas
3	0.078.1220.3/30	3	engine connecting rod
4	2.0399.213.0	2	screw m 12 p.1.25x61.5
5	2.1559.114.0/10	1	special bushing
6	2.1720.006.0	2	key 4x6.5
7	0.065.1254.0/20	1	gasket
8	0.338.0060.6/20	3	complete piston 2347 <= 8 0.381.0060.6 3 complete piston 2347 <= EXPORT U.S.A. 8 0.381.0060.A 3 complete piston "A" => 2348 8 0.381.0060.B 3 complete piston "B" => 2348
9	0.338.0052.6/10	1	piston ring set
10	2.1411.014.1	6	circlip 35
11	0.078.1236.0	3	piston pin Ø 18 / Ø 35 / L = mm 86
12	0.007.1711.0/10	1	cover => 1411 12 0.065.1253.0/10 1 cover 1410 <= 13 2.1529.073.0 1 special oil seal 110x130x13
13	2.1529.073.0	1	special oil seal 110x130x13
14	2.0112.207.2	9	screw m 8 p 1.25 x 20
15	2.1475.002.2	9	conical washer 8
16	0.330.1250.0	6	screw m 12 p.1.25x98
17	2.2041.008.0	1	ball bearing 20x47x14
18	0.330.1247.3/10	1	flywheel
19	0.069.1242.0	1	crown wheel Z = 121
20	2.1652.915.0	1	cylindrical plug 12x35
21	0.065.1225.0	6	con.rod half bushing STANDARD - A = 28.75 -> 29.00
21	0.065.1225.7		con.rod half bushing - mm 0.25
21	0.065.1225.8		con.rod half bushing - mm 0.50
22	0.065.1215.0	4	main half bushing STANDARD
22	0.065.1215.7		main half bushing - mm 0.25
22	0.065.1215.8		main half bushing - mm 0.50
23	0.065.1216.0	4	main half bushing
23	0.065.1216.7		main half bushing - mm 0.25
23	0.065.1216.8		main half bushing - mm 0.50



Section: ENGINE

CRANKSHAFT

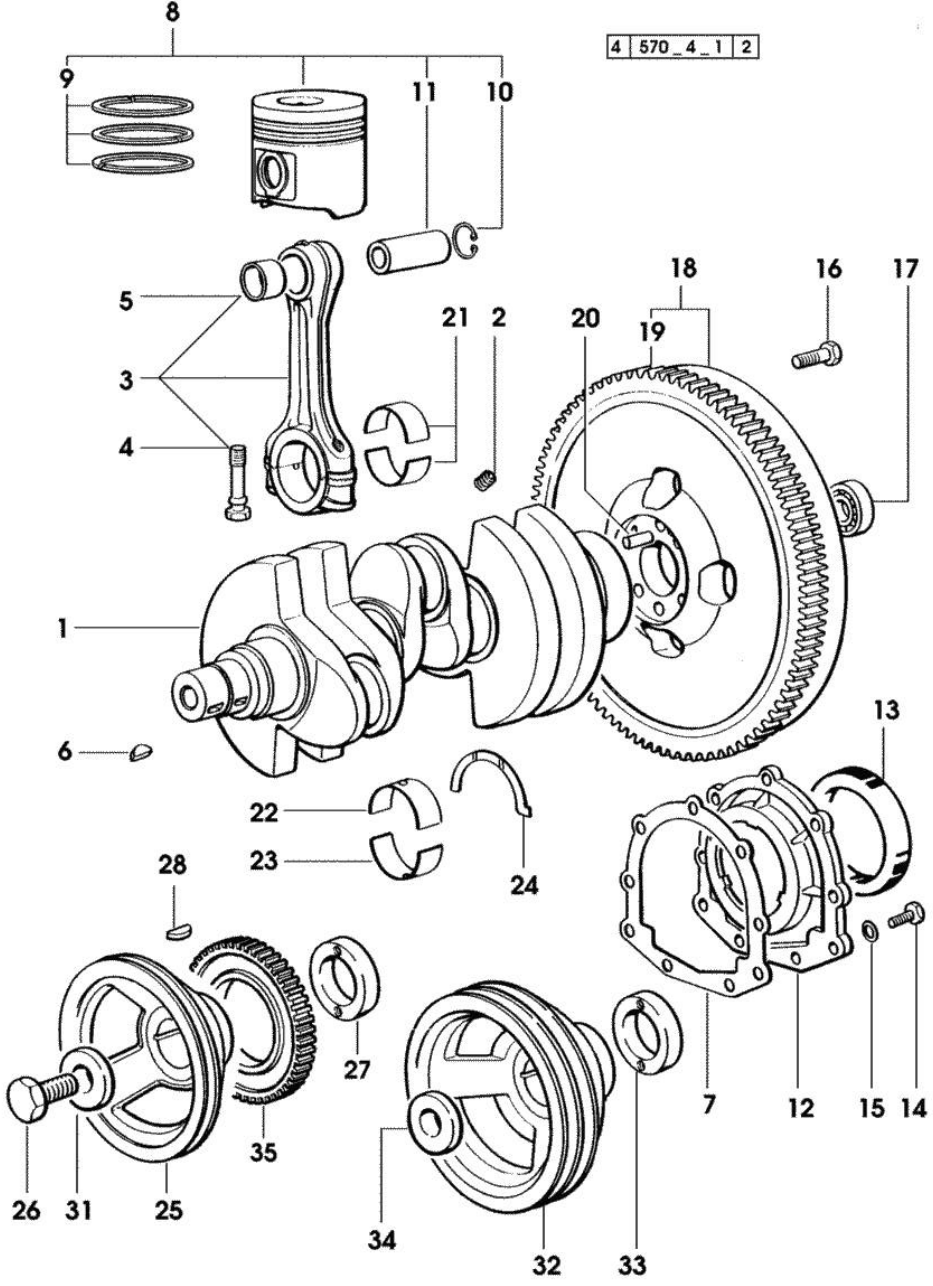


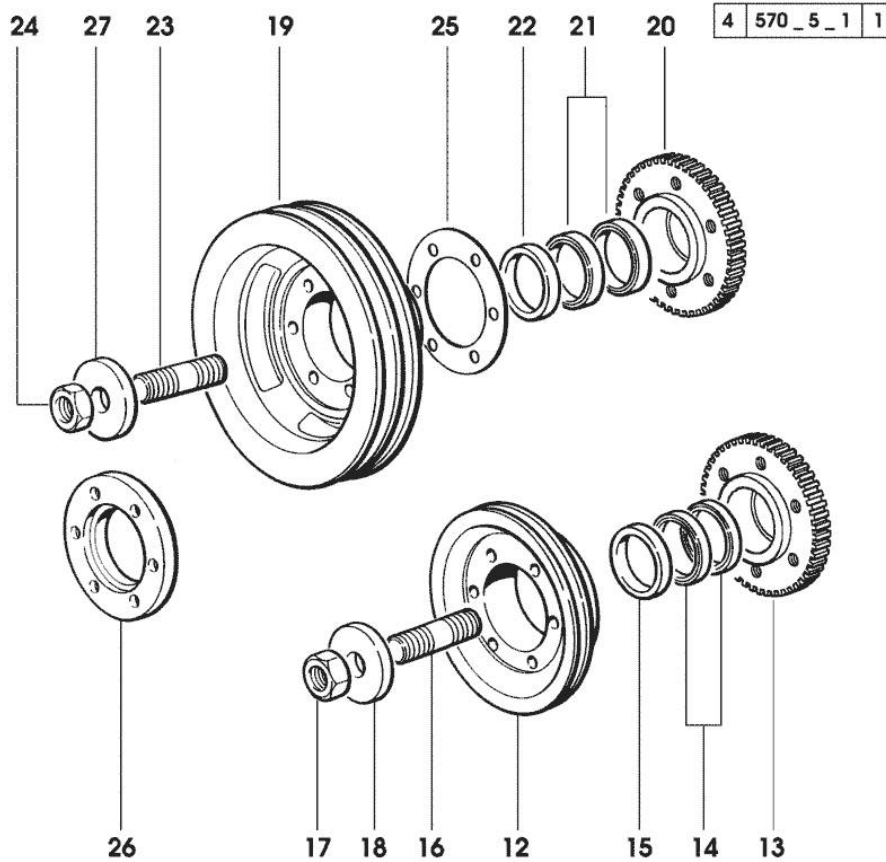
Fig.	P/n	QTY	Name
24	0.065.1218.0	4	shim STANDARD
24	0.065.1218.7		shim + mm 0.10
24	0.065.1218.8		shim + mm 0.15
25	0.007.1457.0/20	1	pulley * 1142 <=
			- N.1 - 2.1720.006.0
26	2.0399.144.7/10	1	screw m 20 p.1.5x51
27	0.085.1248.0/10	1	hub
28	2.1720.006.0	1	key 4x6.5
31	2.1599.524.7	1	washer 21x60x12
32	0.007.1458.0/30	1	pulley * 1142 <=
			- N.1 - 2.1720.006.0
			- FOR TRACTORS WITH AIR CONDITIONING
33	0.085.1248.0/10	1	hub
34	2.1599.524.7	1	washer 21x60x12
35	0.011.3531.0	1	gear Z = 48

ENGINE SHAFT - FRONT P.T.O. PULLEYS

Fig.	P/n	QTY	Name
------	-----	-----	------

Notes:
[H-476-XF]

12	0.082.1244.0/10	1	pulley
13	0.011.3515.0/10	1	hub Z = 48
14	0.065.1256.0	2	ring 45x52
15	2.1579.865.0	4	spacer 45.2x51.8x10
16	2.0439.195.7	1	stud bolt m 20 p.1.5x80
17	2.1019.094.7	1	nut m 20 p.1.5
18	2.1599.524.7	1	washer 21x60x12
19	0.082.1250.0/10	1	pulley
			- FOR TRACTORS WITH AIR CONDITIONING
20	0.011.3515.0/10	1	hub Z = 48
21	0.065.1256.0	2	ring 45x52
22	2.1579.865.0	1	spacer 45.2x51.8x10
23	2.0439.195.7	1	stud bolt m 20 p.1.5x80
24	2.1019.094.7	1	nut m 20 p.1.5
25	2.1589.137.0	3	shoulder ring 71x110x1
26	0.089.1253.0/10	1	spacer
27	2.1599.524.7	1	washer 21x60x12



Section: ENGINE
CAMSHAFT

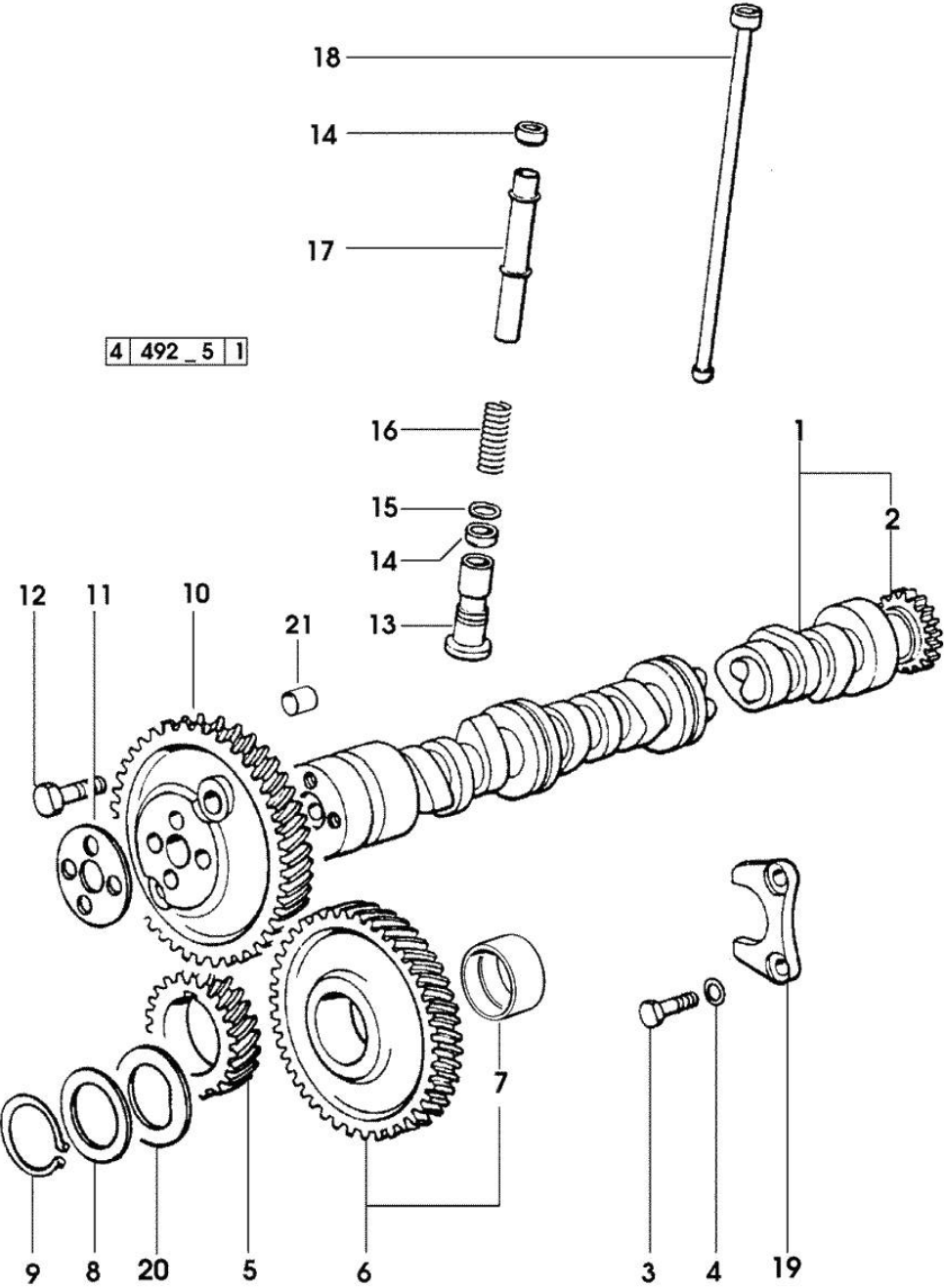
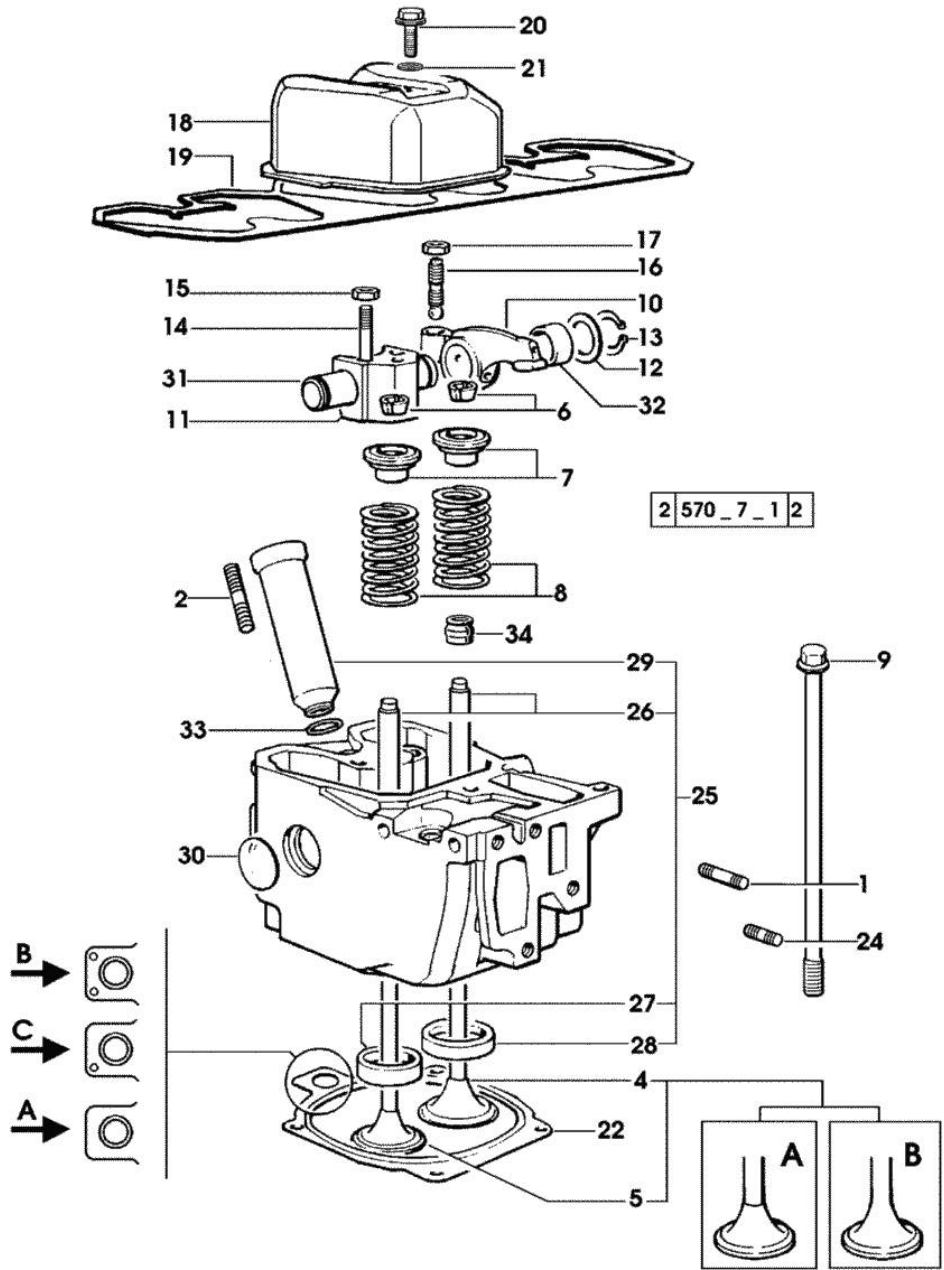


Fig.	P/n	QTY	Name
Notes:			
[H-476-XF]			
1	0.009.7456.3/10	1	camshaft 1773 <- X H 361 XF EXPORT U.S.A. 1377 <- X H 476 XF EXPORT U.S.A.
1	0.070.1310.3/40	1	camshaft
2	0.065.1324.0/10	1	gear Z = 32
3	2.0312.206.2	2	screw m 8 p 1.25 x 20
4	2.1480.014.1	2	washer 8
5	0.065.1323.0/30	1	gear Z = 29
6	0.007.1177.3/10	1	gear z = 57 - WITH RED IDENTIFICATION STAMP
6	0.007.1178.3/10	1	gear z = 57 - WITH YELLOW IDENTIFICATION STAMP
6	0.007.1179.3/10	1	gear z = 57 - WITH GREEN IDENTIFICATION STAMP
7	2.1559.185.0/10	1	bushing
8	0.065.1352.0	1	shim
9	2.1410.016.1	1	circlip 40
10	0.065.1354.0/20	1	gear z=58
11	0.065.1350.0	1	small disc
12	2.0132.207.2	4	screw m 10 p.1 x 25
13	0.065.1330.0	6	tappets
14	2.1569.114.0/10	12	gasket 14x18.5x8
15	2.1599.437.0	6	shoulder ring
16	2.4019.300.1/10	6	spring 18.5x52x2
17	0.065.1332.0	6	sleeve
18	0.065.1331.2	6	rod
19	0.065.1353.0	1	small plate
20	0.065.1351.0	2	shoulder ring
21	2.1559.398.0	1	bushing 10.5x13x12

Section: ENGINE
CYLINDER HEAD

Fig.	P/n	QTY	Name
			(...) <- = A
26	0.007.1779.0/10	6	valve guide
27	0.066.1427.0	3	valve seat
28	0.078.1426.0	3	valve seat
29	0.010.6041.0	3	bush
30	2.3170.012.1	6	expansion plug 30
31	0.066.1431.0	3	pin
32	2.1559.021.0/40	6	bushing 15x19x22
33	2.1530.051.0	3	oil seal 20.22x3.53
34	2.1519.117.0	6	special oil seal



Section: ENGINE
LUBRICATION

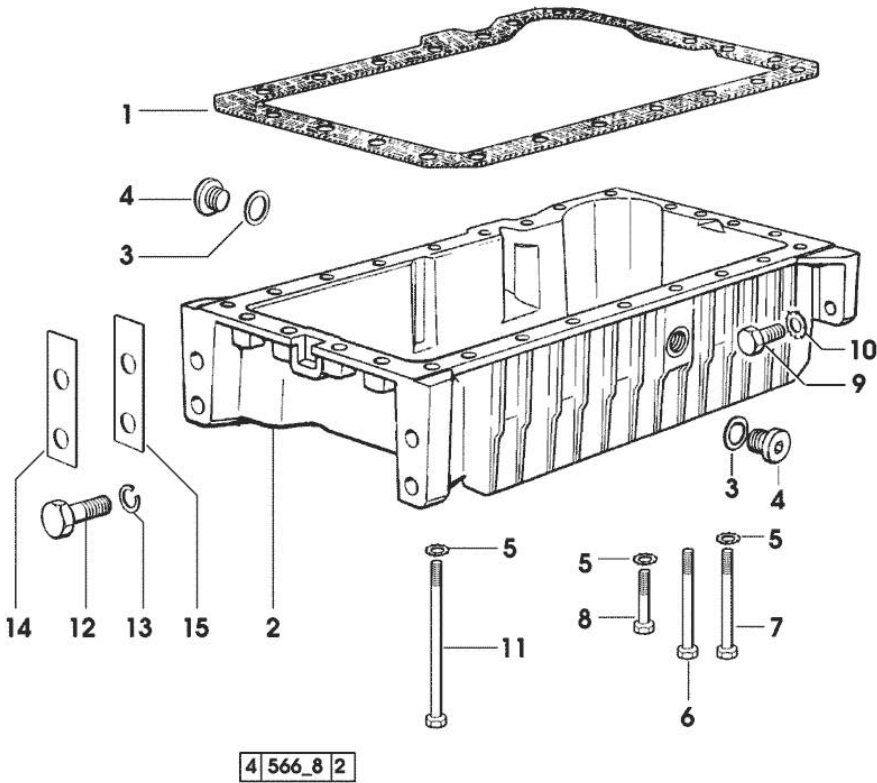
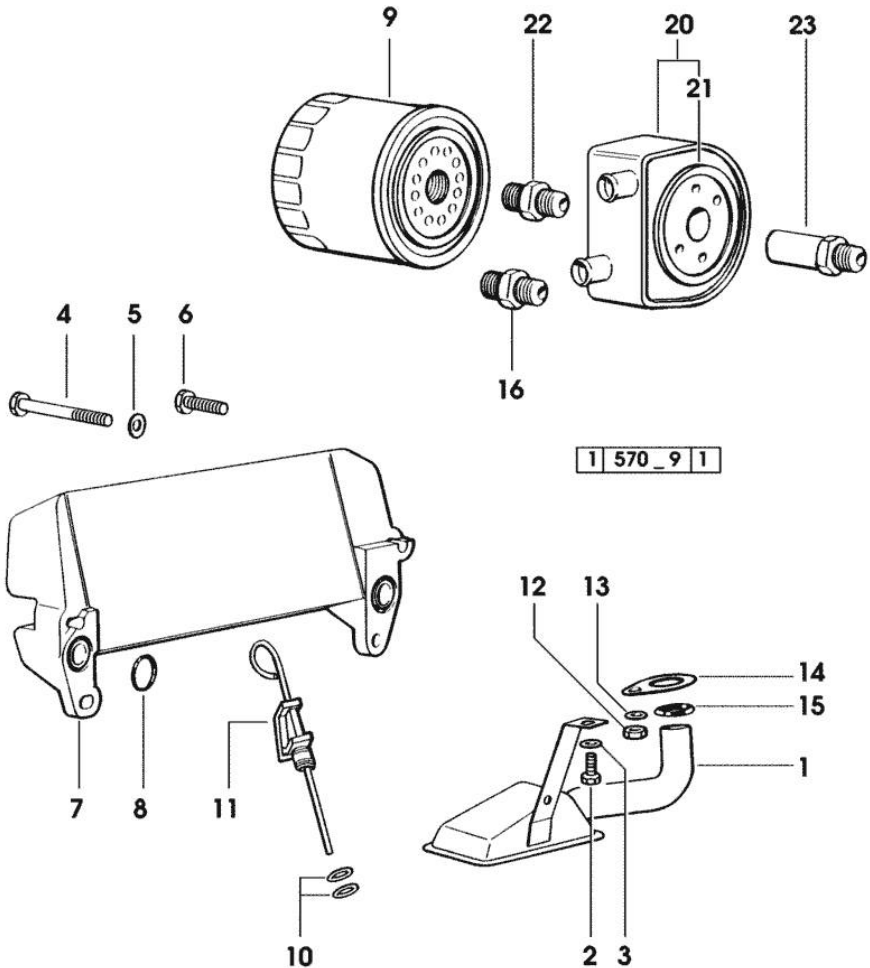


Fig.	P/n	QTY	Name
Notes: [H-476-XF]			
1	0.007.0614.0/10	1	gasket - X H 361 H 476 XF
1	0.065.1550.0/10	1	gasket - X H 481 H 491 XF
2	0.007.1277.0/40	1	oil sump - X H 481 H 491 XF
2	0.007.1422.0/40	1	oil sump * 13382 <= X H 361 XF * 1227 <= X H 476 XF - N.1 - 007.1427.0 - 002.8816.0
3	2.1560.054.0	1	gasket 21 x 26 - X H 361 H 476 XF
4	2.3199.001.2	1	plug 1/2" gas - X H 361 H 476 XF
5	2.1470.004.2	22	lock washer 8 - X H 361 H 476 XF - X H 481 H 491 XF
6	2.0112.226.2	7	screw m 8 p.1.25 x 85 - X H 361 H 476 XF
6	2.0112.235.2	3	screw m 8 p.1.25 x 130 - X H 481 H 491 XF
7	2.0112.226.2	4	screw m 8 p.1.25 x 85 - X H 481 H 491 XF
8	2.0112.215.2	17	screw m 8 p.1.25 x 40 - X H 361 H 476 XF
9	2.0112.411.2	4	screw m 12 p.1.75 x 30 - X H 361 H 476 XF
10	2.1470.007.2	4	lock washer 12 - X H 361 H 476 XF
11	2.0112.239.2	2	screw m 8 p.1.25 x 150
12	2.0112.720.1	4	screw m 18 p.2.5 x 55 - X H 361 H 476 XF
13	2.1475.007.7	4	washer 18 - X H 361 H 476 XF
14	0.008.8586.0/10	4	shim mm 0.20 - X H 361 H 476 XF
15	0.008.8587.0/10	8	shim mm 0.50 - X H 361 H 476 XF

Section: ENGINE
LUBRICATION



1 570_9 1

Fig.	P/n	QTY	Name
------	-----	-----	------

Notes:
[H-476-XF]

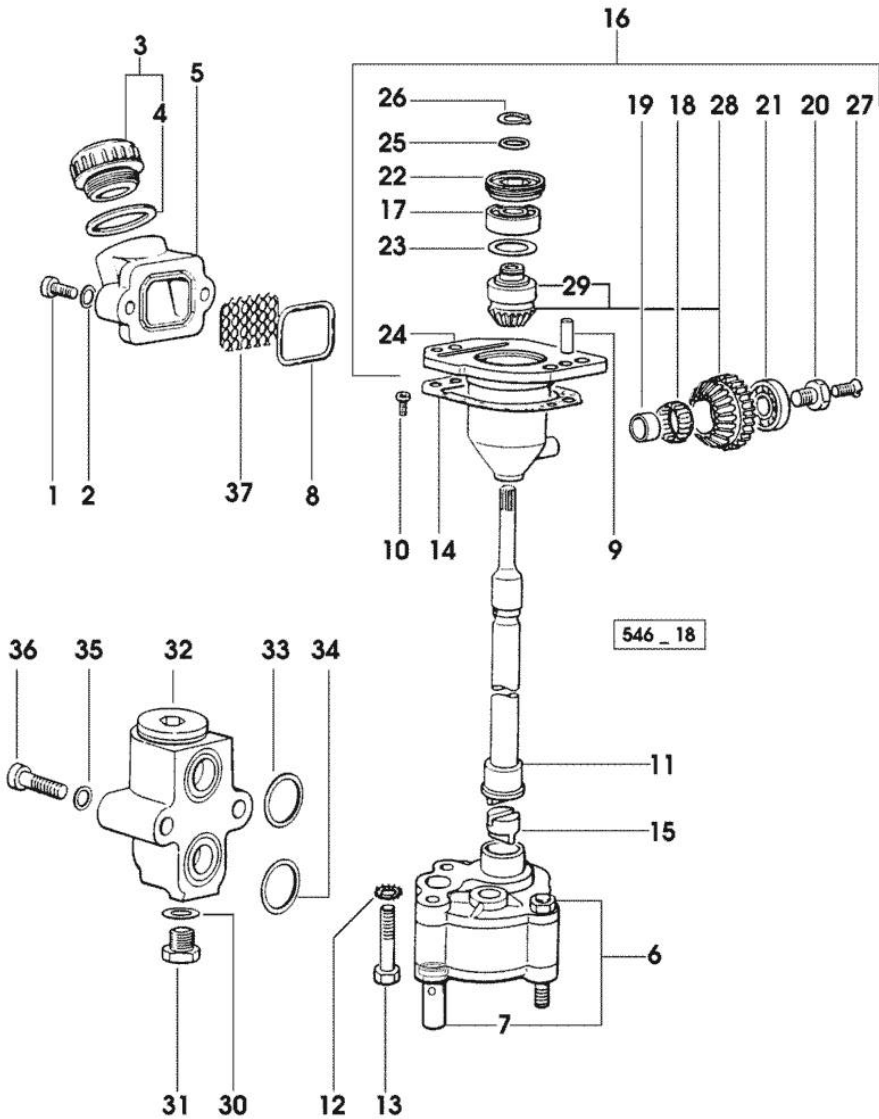
1	0.007.1425.3	1	tube
2	2.0112.205.2	1	screw m 8 p.1.25 x 16
3	2.1470.004.2	1	lock washer 8
4	2.0312.216.2	2	screw m 8 p.1.25x50
5	2.1310.004.2	2	flat washer 8.4x17
6	2.0399.125.2/10	2	screw m 8 x 55
7	0.007.7319.3	1	oil cooler - X H 361 XF
8	2.1539.048.0	2	special oil seal 20.35x1.78
9	0.044.1567.0	1	oil filter element
10	2.1539.065.0	2	special oil seal 8.73 x 1.78
11	0.007.1624.2	1	dipstick
12	2.1011.105.2	1	nut m 8 p.1.25
13	2.1470.004.2	1	lock washer 8
14	0.065.1538.0	1	flange
15	2.1539.040.0	1	special oil seal 21.82 x 3.53
16	2.3339.307.0	1	pipe fitting m 22 p.1.5-3/4"
20	0.007.0172.0	1	oil cooler - X H 476 XF ☞ 0.007.0172.0
21	0.010.2209.0	1	gasket
22	2.3339.549.2	1	pipe fitting m 20 p.1.5 - X H 476 XF
23	2.3339.550.2	1	pipe fitting m 20 p.1.5 / m 22 p.1.5 - X H 476 XF

Section: ENGINE
LUBRICATION

Fig.	P/n	QTY	Name
------	-----	-----	------

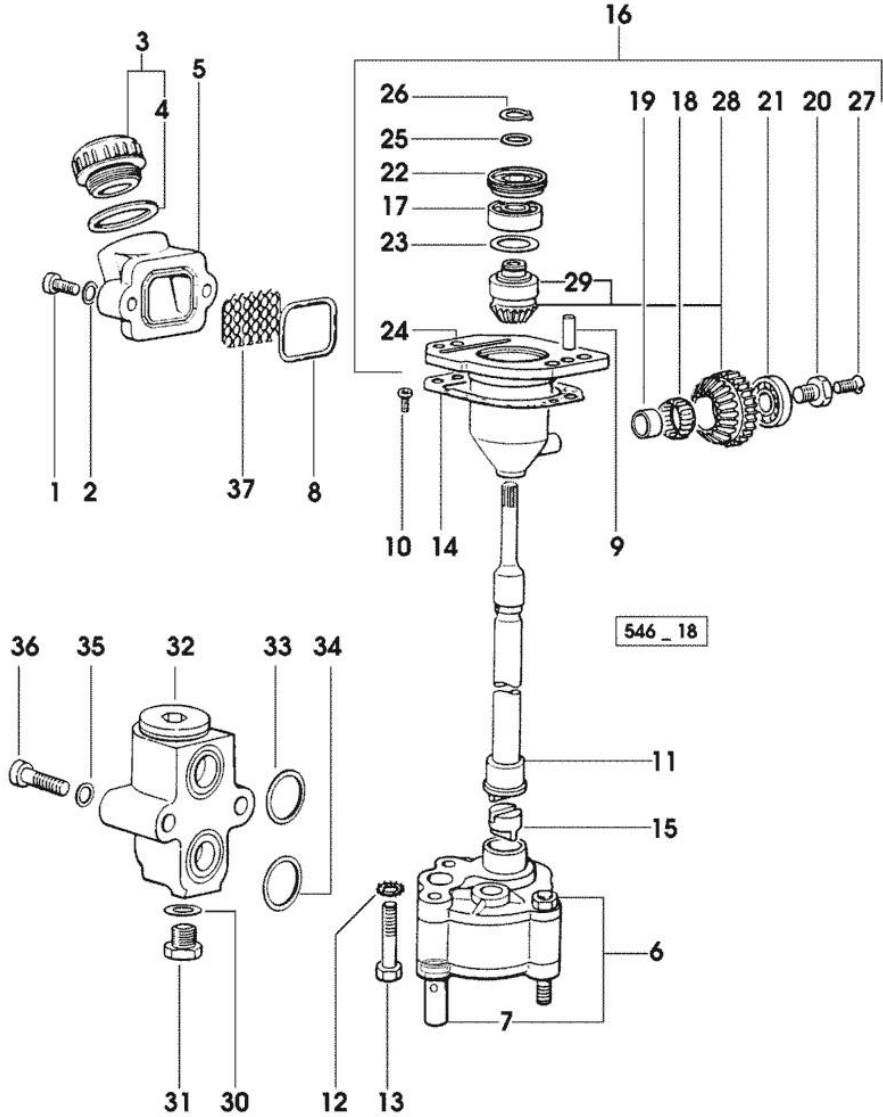
Notes:
[H-476-XF]

1	2.0312.206.2	2	screw m 8 p 1.25 x 20
2	2.1480.014.1	2	washer 8
3	0.041.1135.4	1	plug 1" gas
4	2.1569.072.0	1	gasket 32 x 39.5 x 2
5	0.065.1565.0/10	1	pipe union
6	0.010.5441.4/10	1	oil pump - X H 481 H 491 XF
6	0.010.5481.4	1	oil pump - X H 361 H 476 XF
7	0.065.1552.3/60	1	valve
8	2.1539.042.0	1	special oil seal 47.35x1.78
9	2.1651.711.0	2	pin 8 x 14
10	2.0169.005.2	2	screw m 6 p.1 x 12
11	0.065.1569.0/40	1	shaft
12	2.1470.006.2	2	lock washer 10
13	2.0112.323.2	2	screw m 10 p.1.5x70 - X H 361 H 476 XF
13	2.0112.325.2	2	screw m 10 p.1.5 x 80 - X H 481 H 491 XF
14	0.065.1560.0/20	2	gasket
15	0.065.1562.0/10	1	joint
16	0.075.1551.4/20	1	support
17	2.2020.001.0	1	ball bearing 15 x 32 x 8.00
18	2.2725.016.0	1	roller cage 15 x 21 x 12
19	2.2680.020.0	1	ring 12 x 15 x 12
20	2.0399.128.2/10	1	screw m 8 p.1 x 8
21	2.2030.002.0	1	ball bearing 12 x 28 x 8
22	2.1219.025.2/10	1	ring nut m 36 p.1.5
23	2.1589.148.0	1	shoulder ring 28.2 x 31.8 x 0.5
23	2.1589.150.0	2	shoulder ring 28.2 x 31.8 x 0.1
23	2.1589.151.0	2	shoulder ring 28.2 x 31.8 x 0.15
24	0.075.1551.3/30	1	support
25	2.1589.146.0	2	shoulder ring 15.2 x 19 x 0.15
25	2.1589.147.0	2	shoulder ring 15.2 x 19 x 0.10
25	2.1589.153.0	1	shoulder ring 15.2 x 19 x 1.00
26	2.1410.057.1	1	circlip 15
27	2.0342.007.2	1	screw m 4 p.0.7x25
28	0.065.1558.6/10	1	bevel drive
29	0.065.1559.0	1	bush
30	2.1560.010.0	1	gasket 14.2 x 20
31	2.3110.403.1	1	plug m 14 p.1.5x12



LUBRICATION

Fig.	P/n	QTY	Name
32	0.065.1581.4/20	1	valve - X H 361 XF
33	2.1539.048.0	1	special oil seal 20.35x1.78
34	2.1539.072.0	1	special oil seal 23.52 x 1.78
35	2.1480.014.1	2	washer 8
36	2.0312.215.1	2	screw m 8 p.1.25 x 45
37	0.065.1567.0/10	1	filter



Section: ENGINE
LUBRICATION

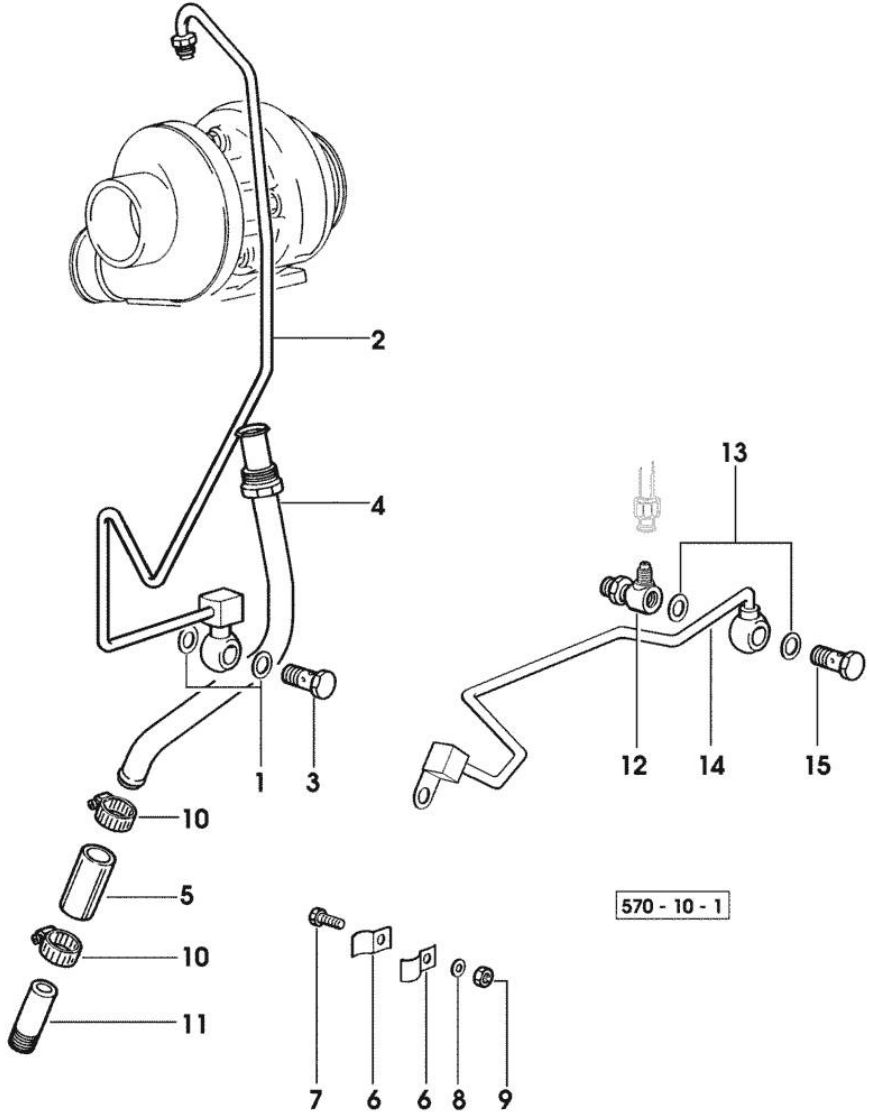


Fig.	P/n	QTY	Name
Notes: [H-476-XF]			
1	2.1560.008.0	2	gasket 12.2 x 18 - X H 476 XF
2	0.007.1334.3/10	1	tube - X H 476 XF
2	0.007.1459.3/10	1	tube - X H 491 XF
3	2.3339.448.2	1	pipe union m 12 p.1.75 - X H 476 XF
4	0.007.1335.3/10	1	tube
5	0.007.0729.0/10	1	sleeve
6	0.007.0730.0	2	small plate
7	2.0112.007.2	1	screw m 6 p.1 x 20
8	2.1470.002.2	1	lock washer 6
9	2.1011.103.2	1	nut m 6 p.1
10	2.6850.006.0	2	clamp 18-28
11	2.3339.490.2	1	pipe fitting m 16 p.1.5
12	2.3339.574.2	1	pipe fitting - X H 491 XF
13	2.1560.008.0	2	gasket 12.2 x 18 - X H 491 XF
14	0.007.1767.3	1	tube - X H 491 XF
15	2.3330.003.1	1	pipe union m 12 p.1.5 - X H 491 XF

Thank you so much for reading.
Please click the “Buy Now!”
button below to download the
complete manual.



After you pay.

You can download the most
perfect and complete manual in
the world immediately.

Our support email:

ebooklibonline@outlook.com