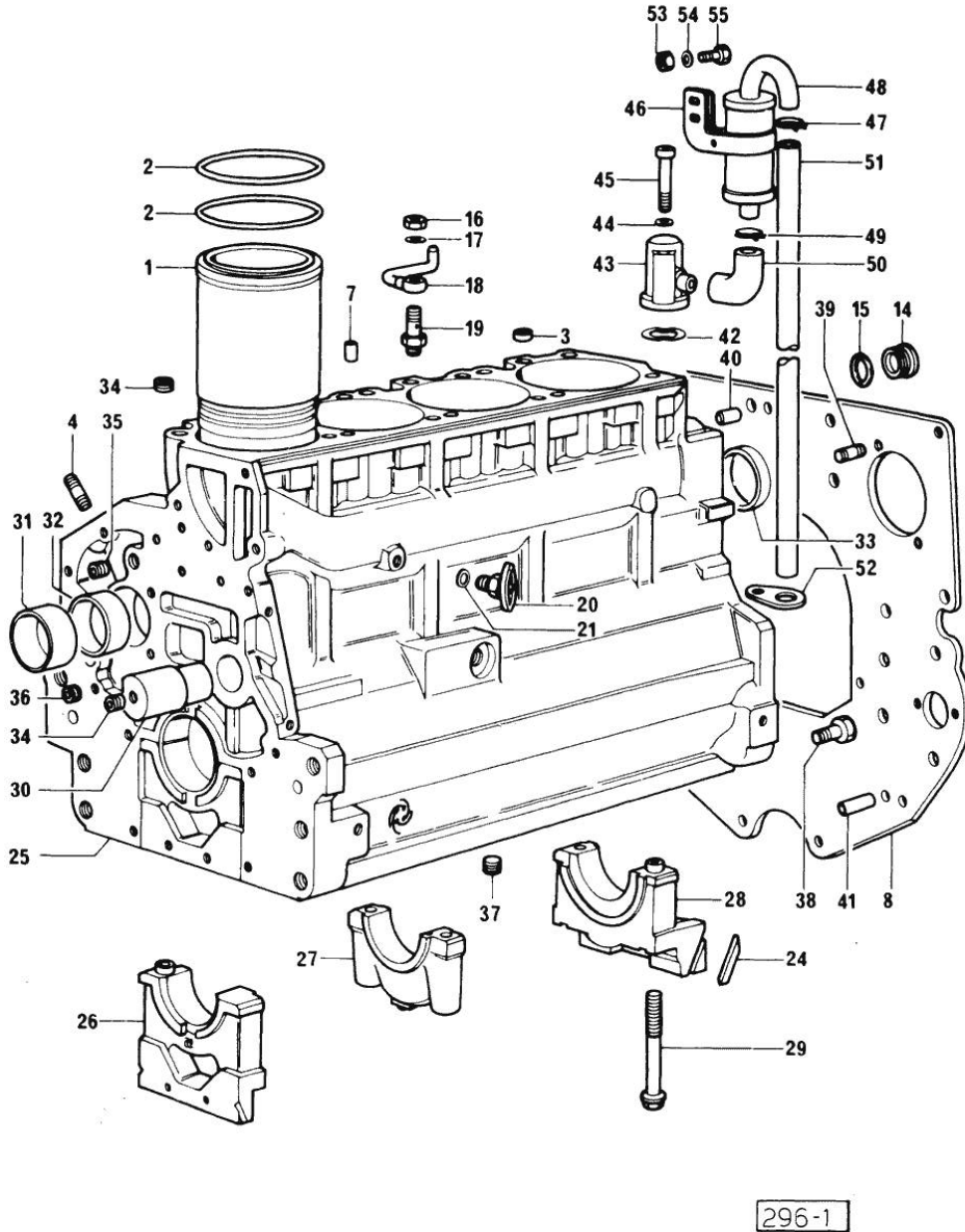
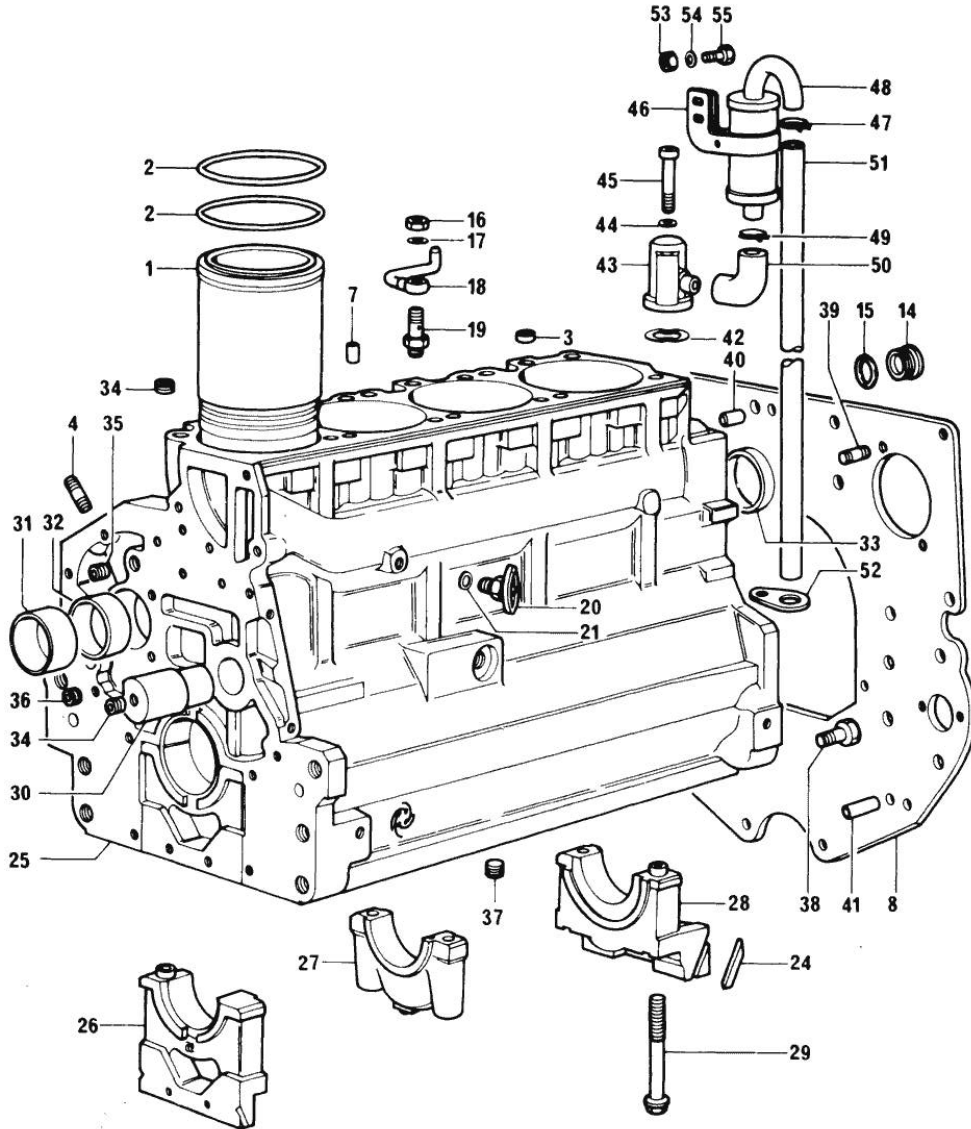


Section: ENGINE
CRANKCASE



| Fig. | P/n | QTY | Name |
|---------------|-----------------|-----|--------------------------------------|
| Notes: | | | |
| [H 488 T] | | | |
| 0 | 0.082.0050.6 | 1 | gasket set 916.4 W |
| 0 | 0.090.0050.6 | 1 | gasket set 1000.4 W |
| 1 | 0.066.1120.0/10 | 4 | engine cylinder X 916.4 W |
| 1 | 0.088.1120.0/10 | 4 | engine cylinder X 1000.4 W |
| 2 | 2.1519.096.0 | 8 | oil seal |
| 3 | 2.1559.188.0 | 4 | bushing |
| 4 | 2.0439.154.2 | 12 | stud bolt m 8 p.1x20 |
| 7 | 2.1631.205.0 | 4 | roll pin |
| 8 | 0.066.1130.0/20 | 1 | flange |
| 14 | 2.3199.405.2 | 1 | plug m 28 p.1.5 |
| 15 | 2.1539.047.0 | 1 | special oil seal 26.7x1.78 |
| 16 | 2.1099.108.2 | 4 | special nut m 10 p.1 |
| 17 | 2.1560.006.0 | 8 | gasket 10.2 x 16 |
| 18 | 0.086.1550.2 | 4 | sprayer nozzle |
| 19 | 0.065.1160.3/20 | 4 | valve |
| 20 | 0.049.1152.0 | 1 | cock |
| 21 | 2.1560.009.0 | 1 | gasket 14.2x18 |
| 24 | 0.066.1152.0 | 4 | gasket |
| 25 | 9.08299.42.2 | 1 | crankcase - X 916.4 W |
| 26 | 0.065.1112.3 | 1 | support |
| 26 | 2.1699.165.0 | 1 | bush 12.3x15x16 |
| 27 | 0.065.1114.0 | 3 | old part number |
| 28 | 0.065.1116.3 | 1 | support |
| 28 | 2.1699.165.0 | 1 | bush 12.3x15x16 |
| 29 | 0.065.1117.0 | 10 | screw m 12 x 100 |
| 30 | 0.066.1151.0 | 1 | pin |
| 31 | 0.065.1141.0 | 1 | special bushing 59X55X30 |
| 32 | 0.065.1140.0 | 4 | special bushing 59X55X20 |
| 33 | 2.3179.012.0 | 1 | plug 60 |
| 34 | 2.3130.001.1 | 11 | plug 1/8" gas |
| 35 | 2.3130.002.1 | 2 | plug 1/4" gas |
| 36 | 2.3130.003.1 | 2 | plug 3/8" gas |
| 37 | 2.1324.011.0 | 1 | plug |
| 38 | 2.0112.511.2 | 8 | screw m 14 p.2 x 30 |
| 39 | 2.0432.255.1 | 2 | stud bolt m 12 p.1.75 - 12 p.1.25x25 |
| 40 | 2.1651.912.0 | 2 | cylindrical plug 12x28 |
| 41 | 2.1651.917.0 | 1 | cylindrical plug 12x40 |

Section: ENGINE
CRANKCASE

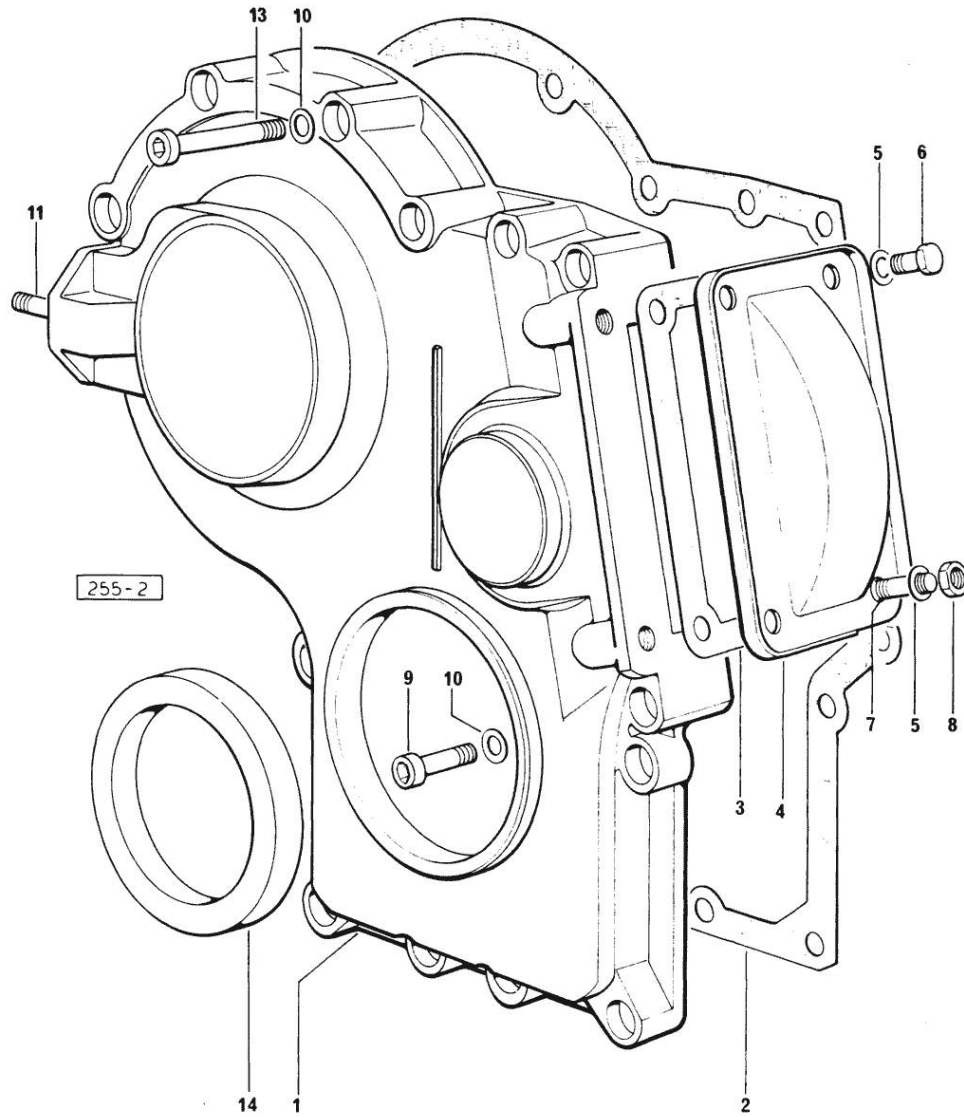


| Fig. | P/n | QTY | Name |
|------|-----------------|-----|--------------------------|
| 42 | 0.065.1165.2 | 1 | sediment bowl (...)<= |
| 43 | 0.065.1143.3/10 | 1 | body (...)<= |
| 44 | 2.1470.004.2 | 2 | lock washer 8 |
| 45 | 2.0312.219.2 | 2 | screw m 8 p.1.25x65 |
| 46 | 2.6859.074.2/10 | 1 | clamp (...)<= |
| 47 | 2.6859.072.2 | 1 | clamp (...)<= |
| 48 | 0.065.1165.2 | 1 | sediment bowl (...)<= |
| 49 | 2.6859.073.2 | 2 | clamp (...)<= |
| 50 | 0.065.1166.0 | 1 | sleeve (...)<= |
| 51 | 0.065.1155.0/10 | 1 | tube (...)<= |
| 52 | 0.065.1157.0 | 1 | bracket (...)<= |
| 53 | 2.1011.103.2 | 1 | nut m 6 p.1 |
| 54 | 2.1470.002.2 | 1 | lock washer 6 |
| 55 | 2.0112.004.2 | 1 | screw m 6 p.1 x 14 |

296-1

Section: ENGINE

TIMING CASE



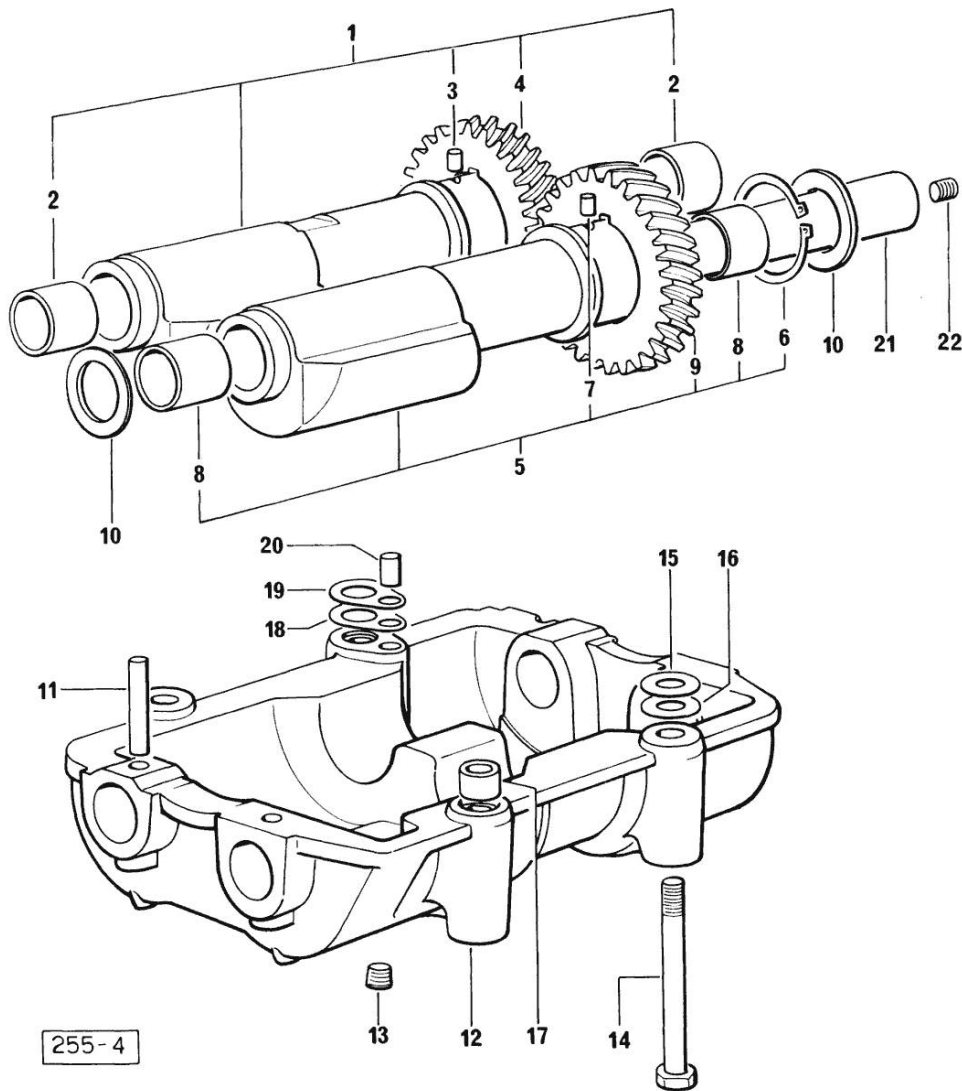
| Fig. | P/n | QTY | Name |
|------|-----|-----|------|
|------|-----|-----|------|

Notes:

[H 488 T]

| | | | |
|----|-----------------|----|---------------------------------|
| 1 | 0.065.1132.0/20 | 1 | guard |
| 2 | 0.065.1150.0 | 1 | - |
| 3 | 0.065.1152.0 | 1 | gasket |
| 4 | 0.065.1151.0 | 1 | cover |
| 5 | 2.1470.004.2 | 4 | lock washer 8 |
| 6 | 2.0112.205.2 | 2 | screw m 8 p.1.25 x 16 |
| 7 | 2.0432.003.7 | 2 | stud bolt m 8 p.1.25 / p.1 x 20 |
| 8 | 2.1011.405.2 | 2 | nut m 8 p.1 |
| 9 | 2.0312.208.2 | 8 | screw m 8 p.1.25 x 25 |
| 10 | 2.1480.014.1 | 15 | washer 8 |
| 11 | 2.0439.154.2 | 2 | stud bolt m 8 p.1x20 |
| 13 | 2.0312.214.2 | 7 | screw m 8 p.1.25 x 40 |
| 14 | 2.1529.072.0 | 1 | oil seal |

CRANKSHAFT - HARMONIC BALANCER



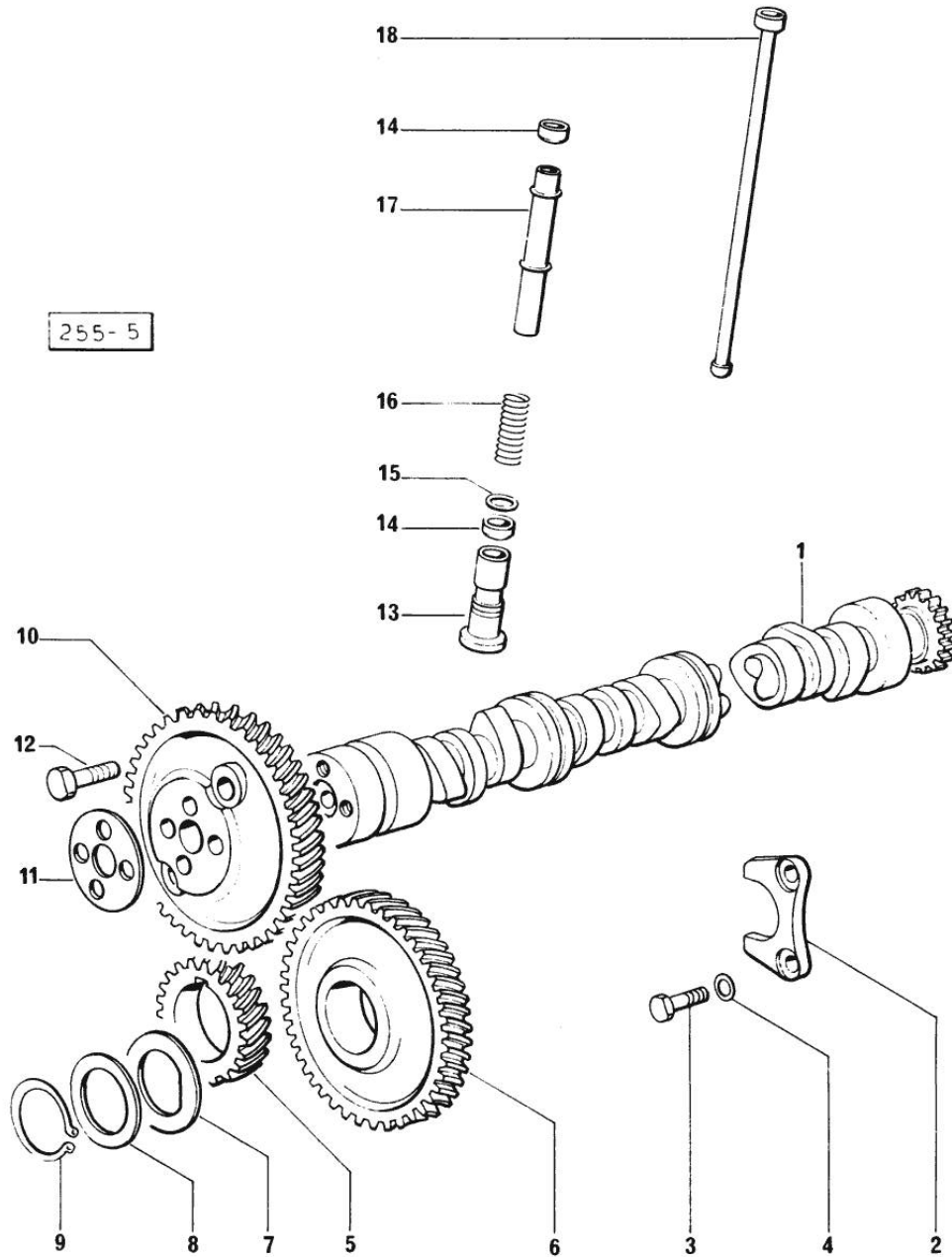
| Fig. | P/n | QTY | Name |
|------|-----|-----|------|
|------|-----|-----|------|

Notes:
[H 488 T]

| | | | |
|----|-----------------|---|---------------------------|
| 1 | 0.086.1233.3/10 | 1 | mass |
| 2 | 2.1559.115.0 | 2 | special bushing 26x30x30 |
| 3 | 2.1652.302.0 | 1 | roll pin 4x6 |
| 4 | 0.065.1237.0/10 | 1 | gear |
| 5 | 0.065.1233.3/10 | 1 | mass |
| 6 | 2.1410.018.1 | 1 | circlip 45 |
| 7 | 2.1652.302.0 | 1 | roll pin 4x6 |
| 8 | 2.1559.115.0 | 2 | special bushing 26x30x30 |
| 9 | 0.065.1238.0 | 1 | gear |
| 10 | 2.1589.185.0 | 4 | shoulder ring 26.1x34x1 |
| 11 | 2.1631.717.0 | 2 | roll pin 8 x 40 |
| 12 | 0.086.1231.3 | 1 | old part number |
| 13 | 2.3130.001.1 | 4 | plug 1/8" gas |
| 14 | 2.0112.427.1 | 4 | screw m 12 p.1.75 x 90 |
| 15 | 2.1589.048.0 | 2 | shoulder ring 16.5x26x0.3 |
| 15 | 2.1589.049.0 | 2 | shoulder ring 12.5x26x0.3 |
| 16 | 2.1579.628.0 | 2 | spacer 16.5x26x0.1 |
| 16 | 2.1579.629.0 | 2 | spacer 12.5x26x0.1 |
| 17 | 2.1579.626.0 | 2 | spacer 13.2x16x11 |
| 18 | 2.1589.139.0 | 2 | shoulder ring mm 0.3 |
| 19 | 2.1589.140.0 | 2 | shoulder ring mm 0.1 |
| 20 | 2.1699.191.0 | 1 | bush 7x10x16 |
| 21 | 0.065.1234.3 | 2 | old part number |
| 22 | 2.3130.001.1 | 2 | plug 1/8" gas |

Section: ENGINE

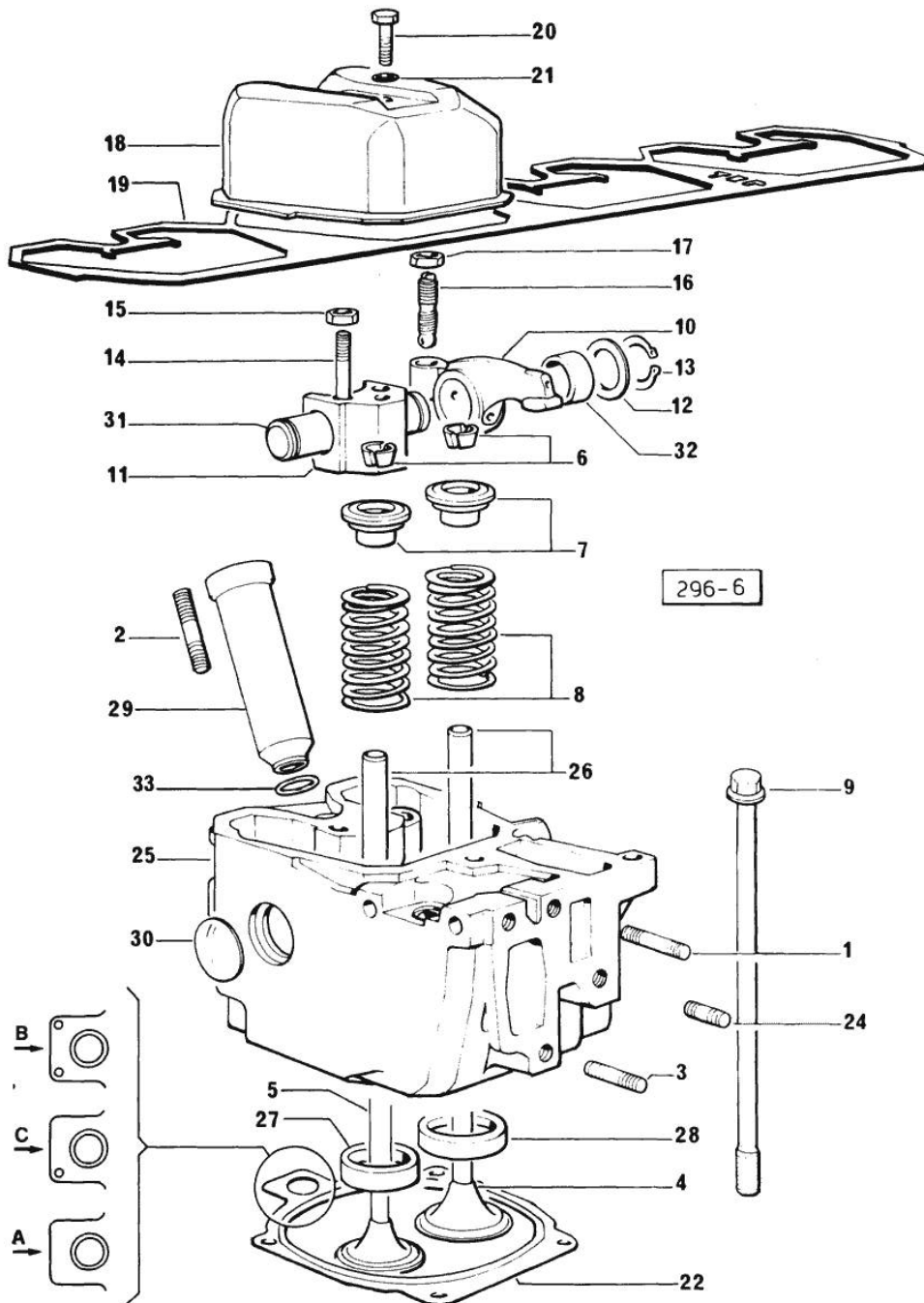
CAMSHAFT



| Fig. | P/n | QTY | Name |
|------|-----|-----|------|
|------|-----|-----|------|

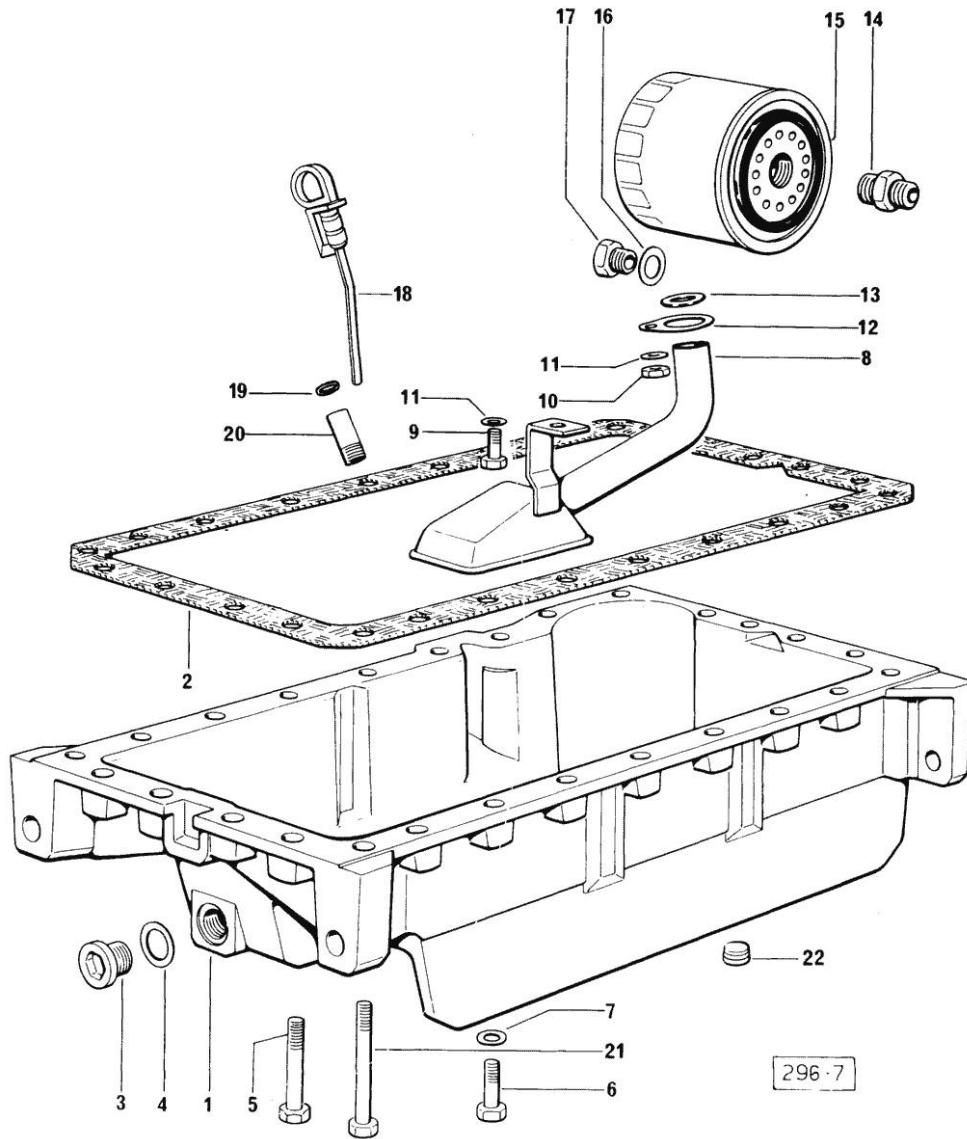
Notes:
[H 488 T]

| | | | |
|----|-----------------|----|---------------------|
| 1 | 0.065.1324.0 | 1 | gear |
| 1 | 0.066.1310.3/10 | 1 | old part number |
| 2 | 0.065.1353.0 | 1 | small plate |
| 3 | 2.0312.205.2 | 2 | screw |
| 4 | 2.1480.014.1 | 2 | washer 8 |
| 5 | 0.065.1323.0/20 | 1 | gear Z = 29 |
| 6 | 0.065.1325.3/20 | 1 | gear Z = 57 |
| 6 | 2.1559.185.0 | 1 | special bushing |
| 7 | 0.065.1351.0 | 2 | shoulder ring |
| 8 | 0.065.1352.0 | 1 | shim |
| 9 | 2.1410.016.1 | 1 | circlip 40 |
| 10 | 0.065.1354.0/10 | 1 | gear z=58 |
| 11 | 0.065.1350.0 | 1 | small disc |
| 12 | 2.0132.207.2 | 4 | screw m 10 p.1 x 25 |
| 13 | 0.065.1330.0 | 8 | tappets |
| 14 | 2.1569.114.0 | 16 | gasket |
| 15 | 2.1599.437.0 | 8 | shoulder ring |
| 16 | 2.4019.300.1 | 8 | spring |
| 17 | 0.065.1332.0 | 8 | sleeve |
| 18 | 0.065.1331.2 | 8 | rod |

Section: ENGINE
CYLINDER HEAD

| Fig. | P/n | QTY | Name |
|---------------|-----------------|-----|------------------------------------|
| Notes: | | | |
| [H 488 T] | | | |
| 1 | 2.0432.011.7 | 4 | stud bolt m 8 p.1.25 / p.1 x 40 |
| 2 | 2.0432.161.7 | 4 | stud bolt m 10 p.1.5 / p.1.25 x 40 |
| 3 | 2.0432.007.7 | 8 | stud bolt m 8 p.1.25 / p.1 x 30 |
| 4 | 0.081.1420.0 | 4 | inlet valve Ø mm 9 |
| 5 | 0.066.1421.0 | 4 | exhaust valve |
| 6 | 0.074.1423.0 | 8 | conical valve cotter |
| 7 | 0.066.1425.0 | 8 | cup |
| 8 | 2.4019.287.0 | 8 | spring |
| 9 | 0.066.1443.0/10 | 16 | screw |
| 10 | 0.066.1432.0 | 8 | rocker arm |
| 11 | 0.066.1430.0 | 4 | support |
| 12 | 2.1599.432.0 | 8 | shoulder ring |
| 13 | 2.1410.055.1 | 8 | circlip 19 |
| 14 | 2.0432.163.7 | 8 | stud bolt m 10 p.1.5 / p.1.25 x 45 |
| 15 | 2.1011.421.2 | 8 | nut m 10 p.1.25 |
| 16 | 0.021.1434.0 | 8 | screw |
| 17 | 2.1011.405.2 | 8 | nut m 8 p.1 |
| 18 | 0.066.1440.0/10 | 4 | small cap |
| 19 | 0.065.1450.0/10 | 4 | gasket |
| 20 | 2.0112.211.2 | 4 | screw m 8 p.1.25 x 30 |
| 21 | 2.1560.204.0 | 4 | gasket |
| 22 | 0.078.1451.0/10 | 4 | gasket mm 1.20 |
| 22 | 0.078.1452.0/10 | 4 | gasket mm 1.40 |
| 22 | 0.078.1453.0/10 | 4 | gasket mm 1.60 |
| 24 | 2.0432.005.7 | 4 | stud bolt m 8 p.1.5 / p.1 x 25 |
| 25 | 0.078.1410.3/30 | 4 | old part number |
| 26 | 0.066.1416.0 | 8 | valve guide |
| 27 | 0.066.1427.0 | 4 | valve seat |
| 28 | 0.078.1426.0 | 4 | valve seat |
| 29 | 0.066.1413.0 | 4 | bush |
| 30 | 2.3170.012.1 | 8 | expansion plug 30 |
| 31 | 0.066.1431.0 | 4 | pin |
| 32 | 2.1559.021.0/40 | 8 | bushing 15x19x22 |
| 33 | 2.1530.056.0 | 4 | oil seal 21.82 x 3.53 |

Section: ENGINE
LUBRICATION

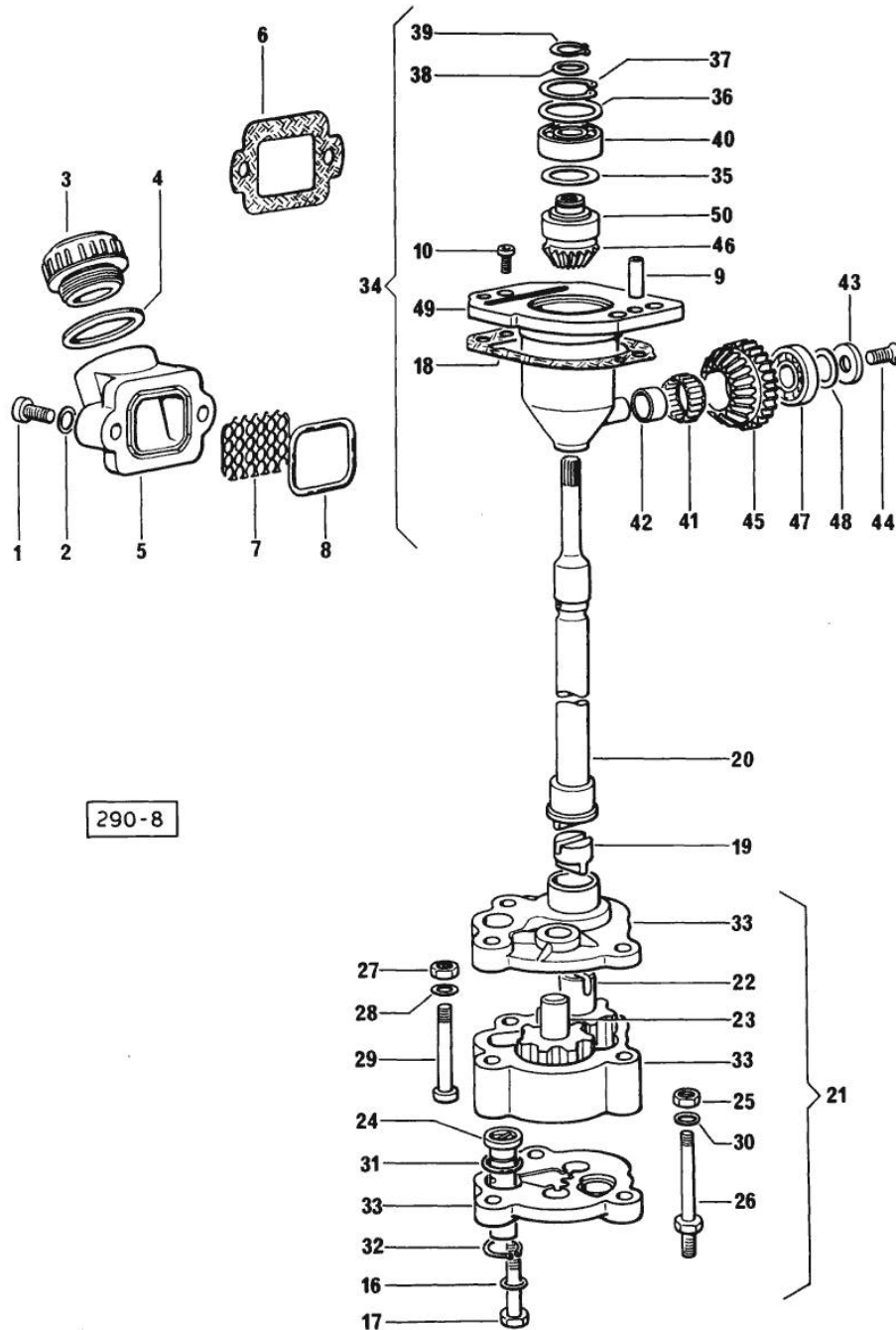


| Fig. | P/n | QTY | Name |
|------|-----|-----|------|
|------|-----|-----|------|

Notes:
[H 488 T]

| | | | |
|----|-----------------|----|--------------------------------|
| 1 | 0.065.1510.0/20 | 1 | oil sump |
| 2 | 0.065.1550.0 | 1 | gasket |
| 3 | 2.3199.001.2 | 1 | plug 1/2" gas |
| 4 | 2.1560.054.0 | 1 | gasket 21 x 26 |
| 5 | 2.0112.227.2 | 9 | screw m 8 p.1.25 x 90 |
| 6 | 2.0112.215.2 | 17 | screw m 8 p.1.25 x 40 |
| 7 | 2.1470.004.2 | 26 | lock washer 8 |
| 8 | 0.065.1531.3 | 1 | tube |
| 9 | 2.0112.205.2 | 1 | screw m 8 p.1.25 x 16 |
| 10 | 2.1011.105.2 | 1 | nut m 8 p.1.25 |
| 11 | 2.1470.004.2 | 2 | lock washer 8 |
| 12 | 0.065.1538.0 | 1 | flange |
| 13 | 2.1539.040.0 | 1 | special oil seal 21.82 x 3.53 |
| 14 | 2.3339.307.1/20 | 1 | pipe fitting |
| 15 | 2.4419.340.0 | 1 | oil filter element |
| 16 | 2.1560.014.0 | 1 | washer 18.2 x 24 |
| 17 | 2.3339.353.2/10 | 1 | pipe fitting 12 p.1.5-18 p.1.5 |
| 18 | 0.066.1513.2/10 | 1 | dipstick mm 106 |
| 19 | 2.1539.065.0 | 2 | special oil seal 8.73 x 1.78 |
| 20 | 0.066.1551.0 | 1 | spacer |
| 21 | 2.0112.235.2 | 3 | screw m 8 p.1.25 x 130 |
| 22 | 2.3130.003.1 | 1 | plug 3/8" gas |

Section: ENGINE
LUBRICATION

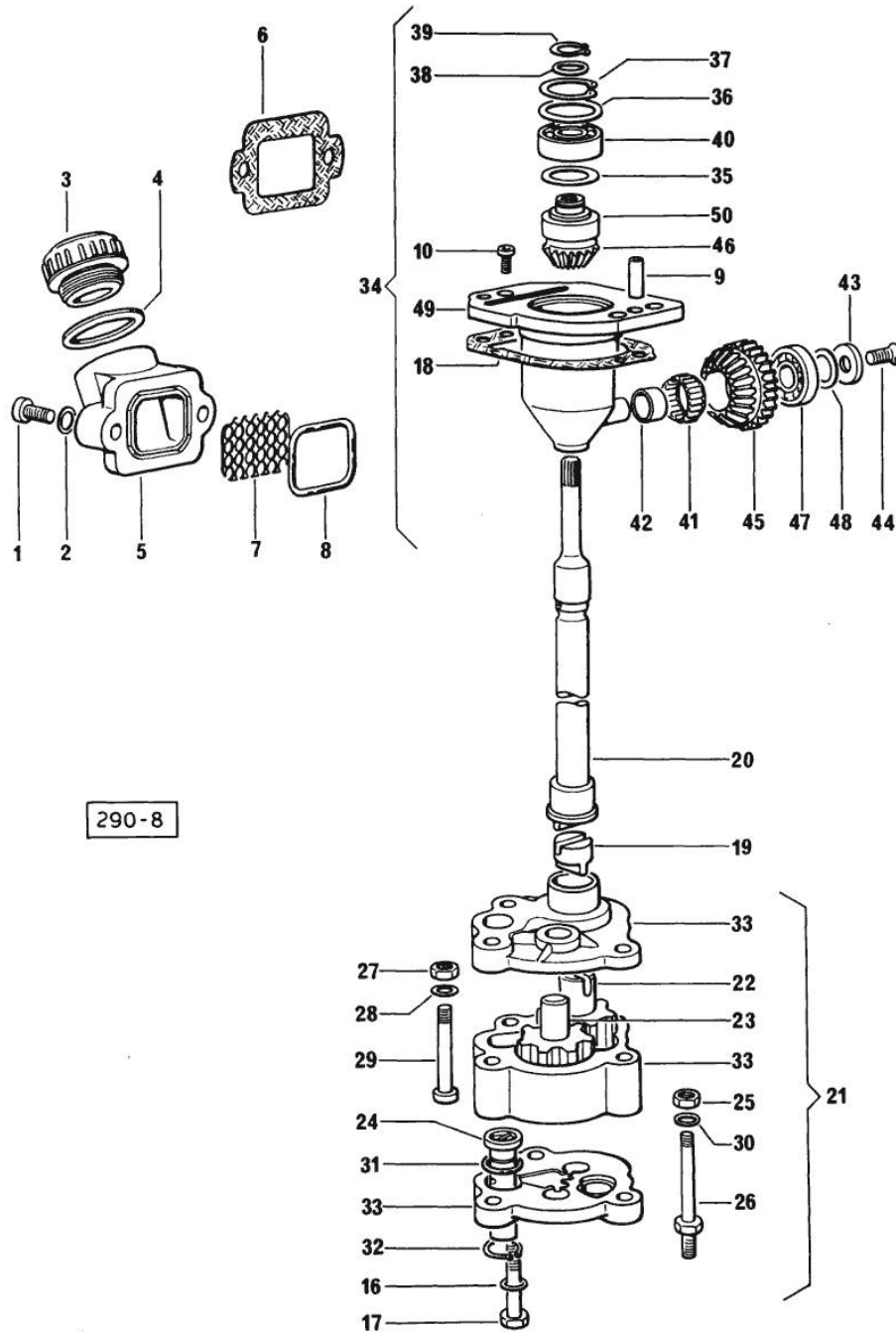


| Fig. | P/n | QTY | Name |
|------|-----|-----|------|
|------|-----|-----|------|

Notes:
[H 488 T]

| | | | |
|----|-----------------|---|----------------------------------|
| 1 | 2.0312.205.2 | 2 | screw |
| 2 | 2.1480.014.1 | 2 | washer 8 |
| 3 | 0.041.1135.4 | 1 | plug 1" gas |
| 4 | 2.1569.072.0 | 1 | gasket 32 x 39.5 x 2 |
| 5 | 0.065.1565.0/10 | 1 | pipe union |
| 6 | 0.065.1566.0 | 1 | gasket |
| 7 | 0.065.1567.0/10 | 1 | filter |
| 8 | 2.1539.042.0 | 1 | special oil seal 47.35x1.78 |
| 9 | 2.1652.711.0 | 2 | cylindrical plug 8x25 |
| 10 | 2.0169.005.2 | 2 | screw m 6 p.1 x 12 |
| 16 | 2.1470.006.2 | 2 | lock washer 10 |
| 17 | 2.0112.324.2 | 2 | screw m 10 p.1.5x75 |
| 18 | 0.065.1560.0/10 | 1 | gasket |
| 19 | 0.065.1562.0 | 1 | joint |
| 20 | 0.065.1569.0 | 1 | shaft |
| 21 | 9.06599.41.2 | 1 | oil pump |
| 22 | 0.065.1523.3/20 | 1 | old part number |
| 23 | 0.065.1521.3/10 | 1 | old part number |
| 24 | 0.065.1552.3/30 | 1 | valve |
| 25 | 2.1011.105.2 | 1 | nut m 8 p.1.25 |
| 26 | 2.0399.118.2 | 1 | screw |
| 27 | 2.1011.103.2 | 1 | nut m 6 p.1 |
| 28 | 2.1480.012.1 | 1 | washer 6, d128 |
| 29 | 2.0312.116.1 | 1 | old part number |
| 30 | 2.1480.014.1 | 1 | washer 8 |
| 31 | 2.1539.041.0 | 1 | special oil seal |
| 32 | 2.1410.004.1 | 1 | circlip 16 |
| 33 | 0.000.0000.1 | 1 | cannot be supplied |
| 34 | 0.075.1551.4/10 | 1 | old part number |
| 35 | 2.1589.148.0 | 1 | shoulder ring 28.2 x 31.8 x 0.5 |
| 36 | 2.1589.149.0 | 1 | old part number |
| 36 | 2.1589.150.0 | 1 | shoulder ring 28.2 x 31.8 x 0.1 |
| 36 | 2.1589.151.0 | 1 | shoulder ring 28.2 x 31.8 x 0.15 |
| 37 | 2.1411.013.1 | 1 | circlip 32 |
| 38 | 2.1589.146.0 | 1 | shoulder ring 15.2 x 19 x 0.15 |
| 38 | 2.1589.147.0 | 1 | shoulder ring 15.2 x 19 x 0.10 |
| 38 | 2.1589.153.0 | 1 | shoulder ring 15.2 x 19 x 1.00 |
| 39 | 2.1410.057.1 | 1 | circlip 15 |
| 40 | 2.2020.001.0 | 1 | ball bearing 15 x 32 x 8.00 |
| 41 | 2.2725.016.0 | 1 | roller cage 15 x 21 x 12 |
| 42 | 2.2680.020.0 | 1 | ring 12 x 15 x 12 |

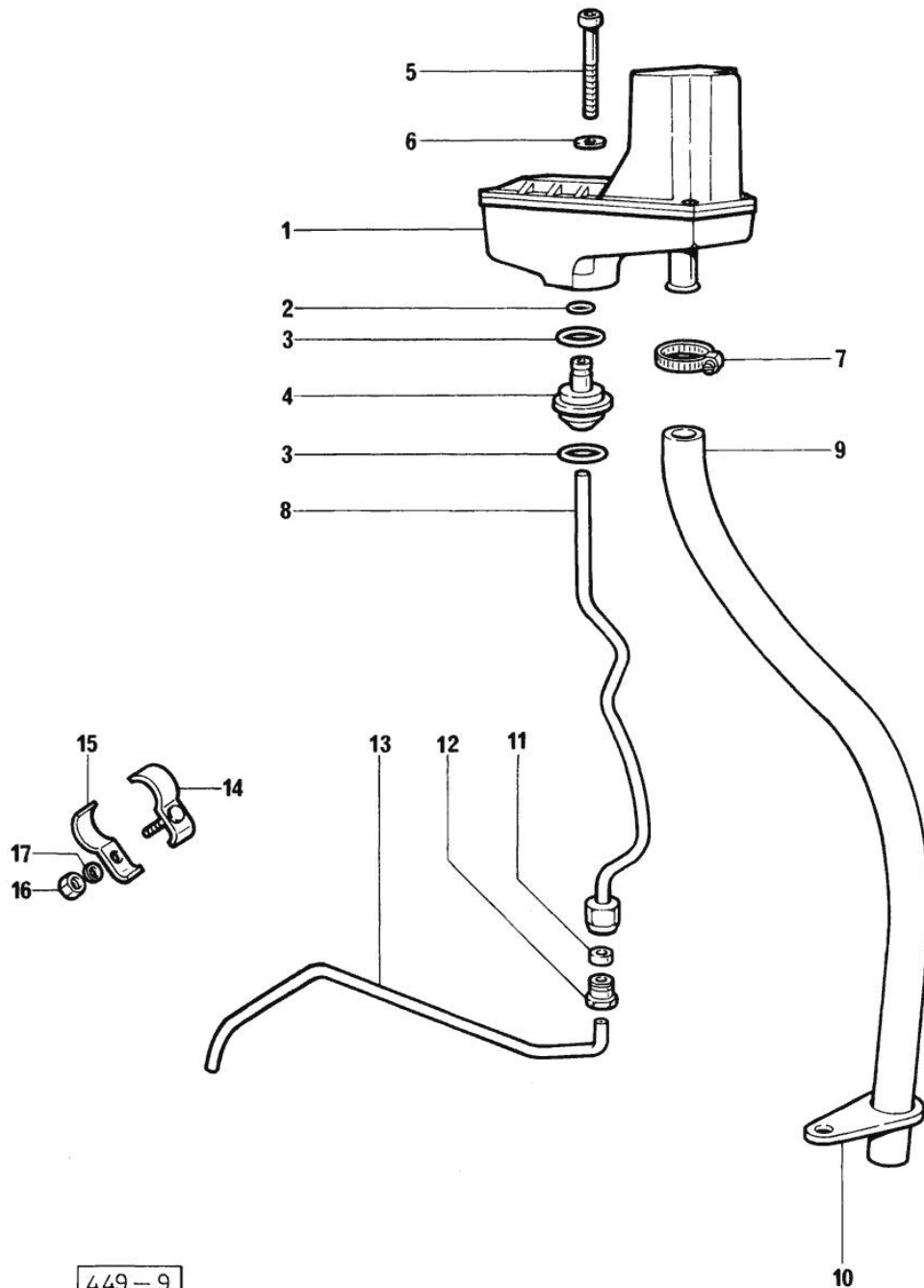
Section: ENGINE
LUBRICATION



290-8

| Fig. | P/n | QTY | Name |
|------|-----------------|-----|--------------------------|
| 43 | 2.1599.483.0 | 1 | shoulder ring |
| 44 | 2.0342.202.2 | 1 | screw |
| 45 | 0.065.1561.0/10 | 1 | old part number |
| 46 | 0.065.1558.0/10 | 1 | old part number |
| 47 | 2.2030.002.0 | 1 | ball bearing 12 x 28 x 8 |
| 48 | 2.1589.143.0 | 1 | shoulder ring mm 0.5 |
| 48 | 2.1589.144.0 | 1 | shoulder ring mm 0.15 |
| 48 | 2.1589.145.0 | 1 | shoulder ring mm 0.10 |
| 49 | 0.075.1551.3 | 1 | old part number |
| 50 | 0.065.1559.0 | 1 | bush |

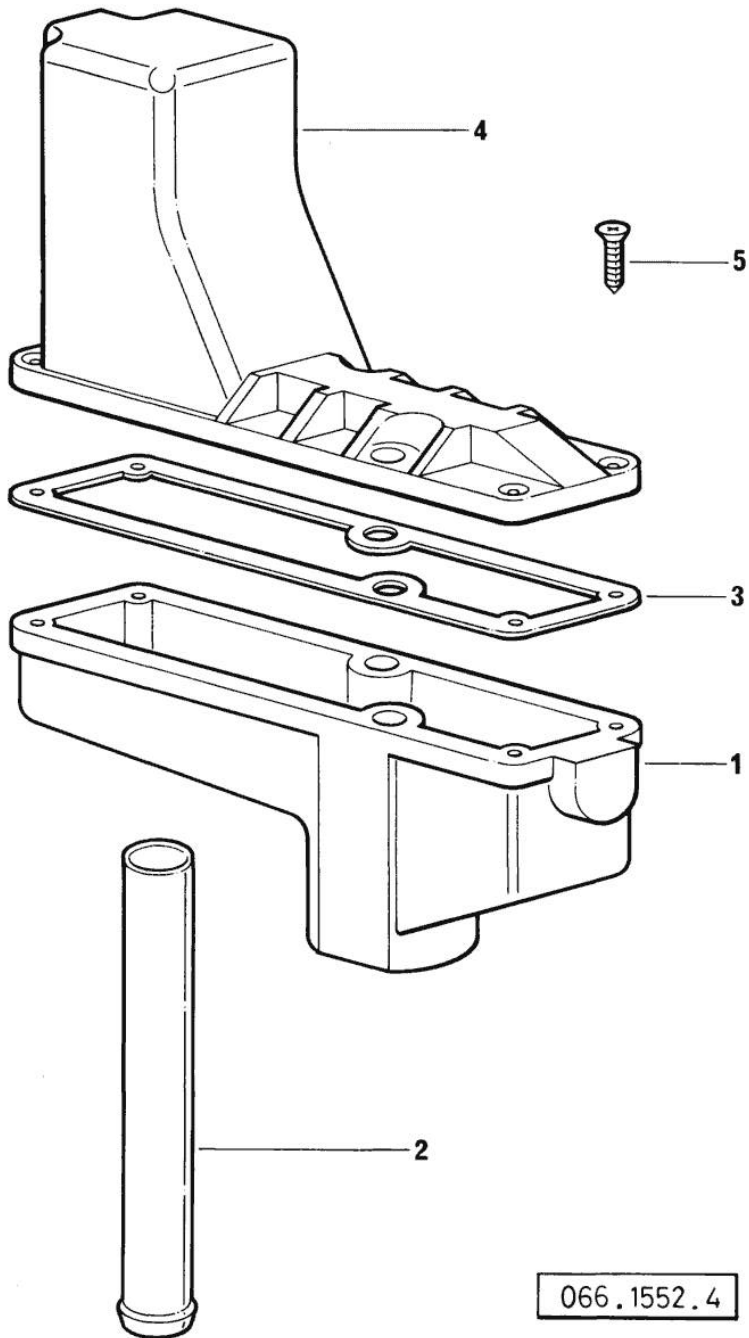
Section: ENGINE
LUBRICATION => (...)



| Fig. | P/n | QTY | Name |
|---------------|--------------|-----|---------------------------------|
| Notes: | | | |
| [H 488 T] | | | |
| 1 | 0.000.0000.1 | 1 | cannot be supplied ☞ 01.00.8 |
| 2 | 2.1539.074.0 | 1 | special oil seal 7.66 x 1.78 |
| 3 | 2.1539.072.0 | 2 | special oil seal 23.52 x 1.78 |
| 4 | 0.066.1558.0 | 1 | bush |
| 5 | 2.0312.221.2 | 2 | screw m 8 p.1.25x75 |
| 6 | 2.1480.014.1 | 2 | washer 8 |
| 7 | 2.6859.073.2 | 1 | clamp |
| 8 | 0.066.1557.2 | 1 | tube |
| 9 | 0.066.1559.0 | 1 | tube |
| 10 | 0.075.1151.0 | 1 | bracket |
| 11 | 2.3350.003.1 | 1 | nosepiece 8 |
| 12 | 2.3339.418.1 | 1 | pipe fitting m 12 p.1 |
| 13 | 0.066.1556.0 | 1 | tube |
| 14 | 0.075.1552.2 | 2 | bracket |
| 15 | 0.075.1552.0 | 2 | bracket |
| 16 | 2.1011.103.2 | 2 | nut m 6 p.1 |
| 17 | 2.1470.002.2 | 2 | lock washer 6 |

Section: ENGINE

OIL VAPORS SEDIMENT BOWL PARTS



| Fig. | P/n | QTY | Name |
|------|-----|-----|------|
|------|-----|-----|------|

Notes:
[H 488 T]

| | | | |
|---|--------------|---|-----------------|
| 1 | 0.066.1552.0 | 1 | sediment bowl |
| 2 | 0.066.1555.0 | 1 | tube |
| 3 | 0.066.1554.0 | 1 | gasket |
| 4 | 0.066.1553.0 | 1 | cover |
| 5 | 2.0351.205.2 | 4 | old part number |

066.1552.4

Thank you so much for reading.
Please click the “Buy Now!”
button below to download the
complete manual.



After you pay.

You can download the most
perfect and complete manual in
the world immediately.

Our support email:

ebooklibonline@outlook.com