

Section: ENGINE
CRANKCASE

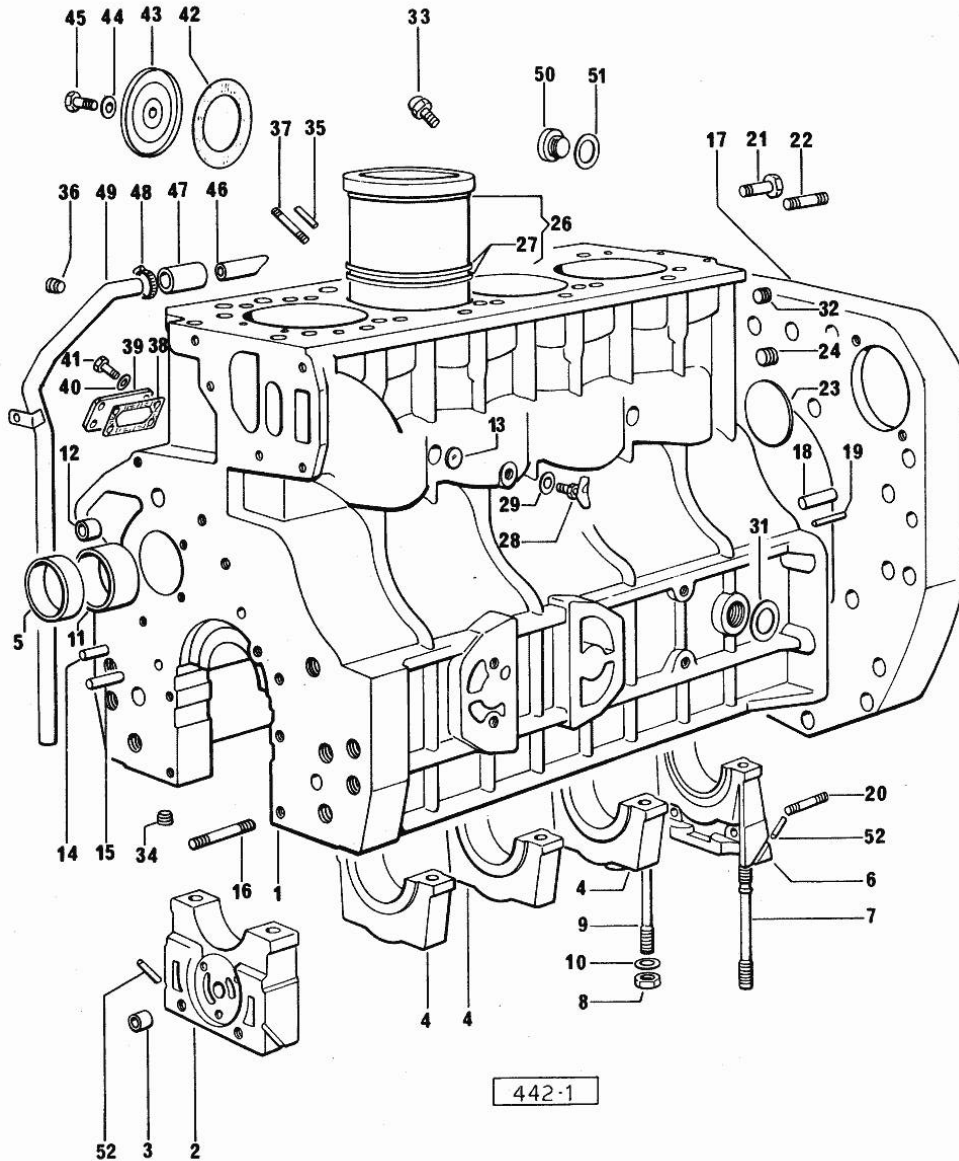


Fig.	P/n	QTY	Name
------	-----	-----	------

Notes:
[H-496 T]

1	0.059.1110.4/70	1	old part number
2	0.052.1112.3	1	support
3	2.1559.090.0/10	1	bushing 14.24x19.06x27
4	0.052.1114.0	3	support
5	2.1559.157.0	1	special bushing
6	0.052.1116.0	1	support
7	0.052.1151.0	4	stud bolt
8	2.1099.064.7	10	special nut
9	0.052.1150.0	6	stud bolt
10	2.1599.318.7	10	flat washer
11	2.1559.156.0	3	special bushing
12	2.1559.111.0/10	2	special bushing 11.5x14.1x10
13	2.3170.012.1	2	expansion plug 30
14	2.1653.711.0	1	pin
15	2.1699.114.0	1	pin 8x55
16	2.0432.025.1	2	stud bolt m 8 p 1.25-1x100
17	0.071.1150.0	1	flange
18	2.1652.911.0	2	cylindrical plug 12x25
19	2.1653.708.0	2	pin 8x18
20	2.0432.153.1	2	stud bolt m 10 p.1.5 / p.1.25 x 20
21	2.0112.513.1	14	screw m 14 p.2 x 35
22	2.0432.257.1	2	stud bolt m 12 p.1.75 - 1.25 x 30
23	2.3170.023.1	1	expansion plug 65
24	2.3130.003.1	2	plug 3/8" gas
26	0.057.1120.0	4	engine cylinder
27	2.1539.029.0	8	special oil seal
28	0.049.1152.0	1	cock
29	2.1560.009.0	1	gasket 14.2x18
31	2.1560.022.0	1	gasket
32	2.3130.002.1	2	plug 1/4" gas
33	0.071.1151.3	4	valve
34	2.3130.001.1	5	plug 1/8" gas
35	2.1653.507.0	2	pin
36	2.3139.001.1	5	plug
37	2.0432.003.1	4	stud bolt m 8 p.1.25 / p.1 x 20
38	0.057.1153.0	1	gasket
39	0.057.1162.3/20	1	cover
40	2.1310.004.2	4	flat washer 8.4x17
41	2.0112.205.2	2	screw m 8 p.1.25 x 16
41	2.0112.209.2	2	screw m 8 p 1.25 x 25
42	0.057.1151.0	1	gasket

Section: ENGINE

CRANKCASE

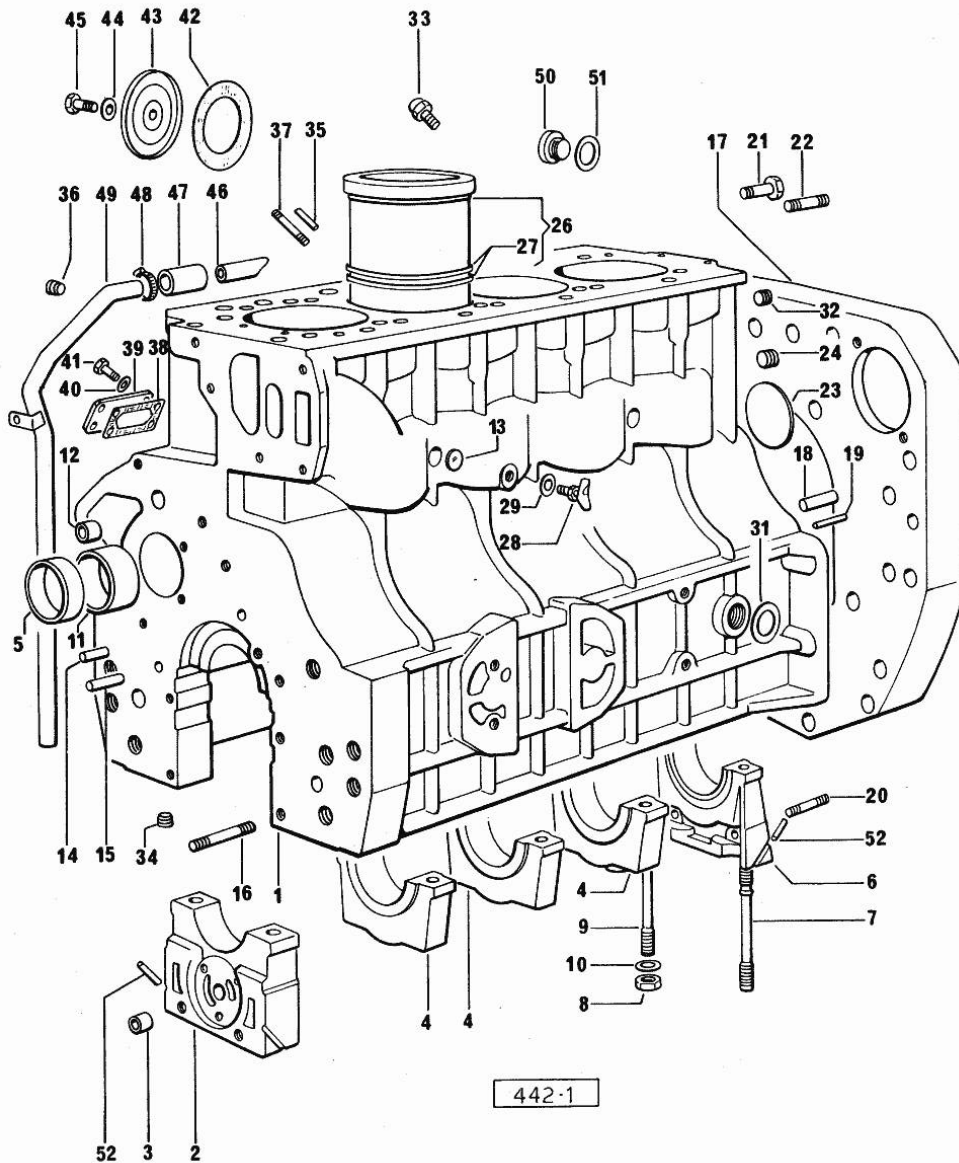


Fig.	P/n	QTY	Name
43	0.057.1150.0	1	cover
44	2.1560.003.0	1	copper gasket 8.2 x 12
45	2.0112.204.2	1	screw m 8 p.1.25x14
46	0.057.1154.0	1	tube
47	0.057.1158.0	1	sleeve
48	2.6850.007.0	1	clamp 25-40
49	0.079.1150.2/10	1	old part number
50	2.3120.002.4	2	plug m 22 x 1.5
51	2.1560.017.0	2	gasket 22.2 x 27
52	0.029.1154.0	4	gasket

Section: ENGINE
TIMING CASE

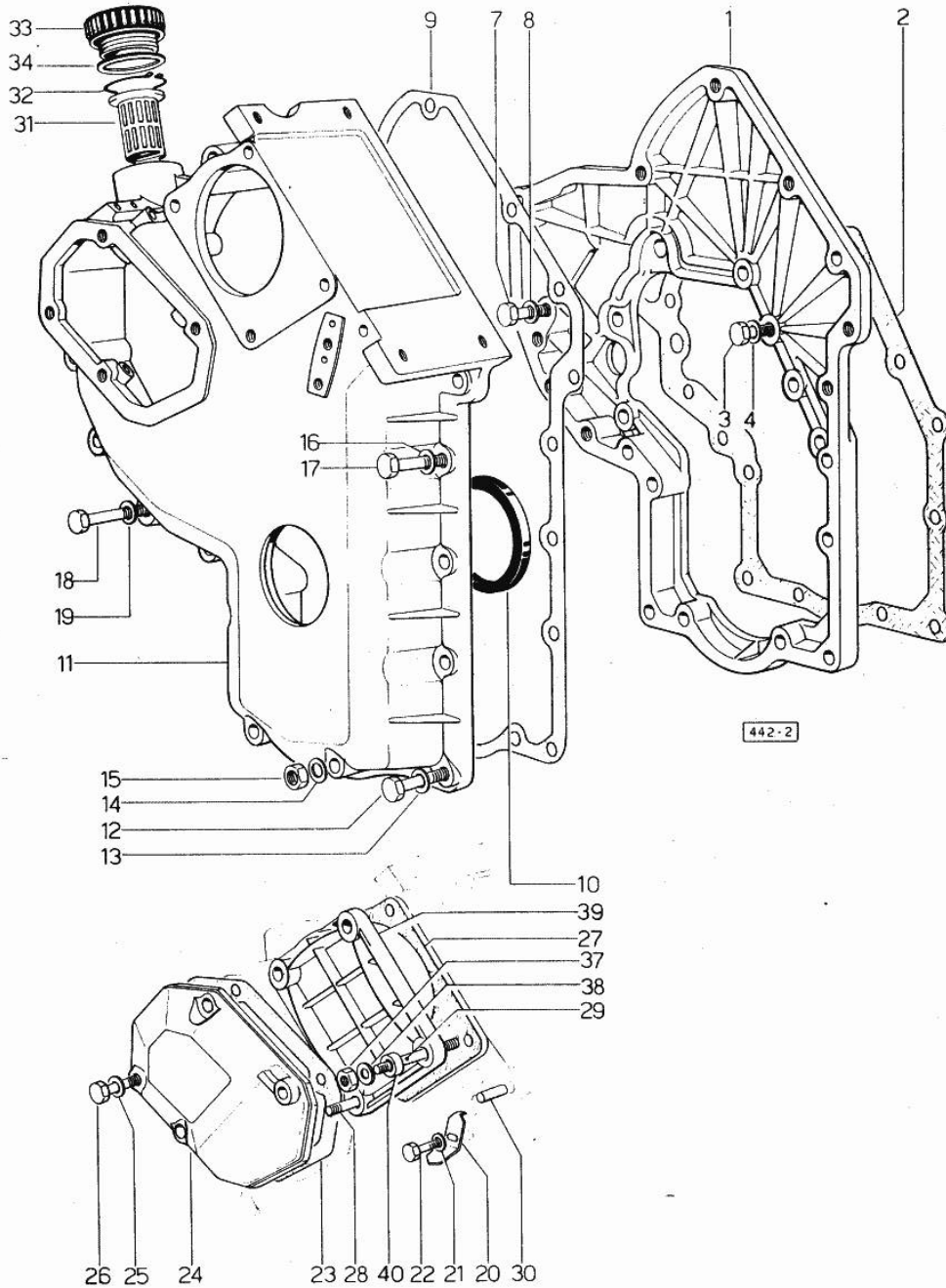


Fig.	P/n	QTY	Name
------	-----	-----	------

Notes:
[H-496 T]

1	0.079.1131.0	1	flange
2	0.057.1155.0	1	gasket
3	2.0112.209.2	2	screw m 8 p 1.25 x 25
4	2.1480.014.1	2	washer 8
7	2.0112.207.2	3	screw m 8 p 1.25 x 20
8	2.1480.014.1	3	washer 8
9	0.041.1152.0	1	gasket
10	2.1519.010.0	1	special oil seal 58x80x10
11	0.048.1132.0/30	1	guard
12	2.0112.217.2	5	screw m 8 p.1.25 x 45
13	2.1480.014.1	5	washer 8
14	2.1560.003.0	2	copper gasket 8.2 x 12
15	2.1011.405.2	2	nut m 8 p.1
16	2.1480.014.1	3	washer 8
17	2.0112.211.2	3	screw m 8 p.1.25 x 30
18	2.0112.222.2	4	screw m 8 p.1.25x65
19	2.1480.014.1	4	washer 8
20	0.041.1158.0	1	index
21	2.1310.004.2	1	flat washer 8.4x17
22	2.0112.204.2	1	screw m 8 p.1.25x14
23	0.048.1151.0/10	1	gasket
24	0.048.1150.0/20	1	cover
25	2.1560.005.0	4	copper gasket 10.2 x 14
26	2.0112.315.2	4	screw m 10 p.1.5 x 40
27	0.041.1154.0	1	gasket
28	2.0432.013.1	1	stud bolt m 8 p.1.25 / p.1 x 45
29	2.0432.028.1	3	stud bolt m 8 p.1.25-1x130
30	2.1653.717.0	1	pin 8 x 40
31	0.041.1159.0/10	1	filter
32	2.1411.012.1	1	circlip 30
33	0.041.1135.3	1	plug
34	2.1569.072.0	1	gasket 32 x 39.5 x 2
37	2.1011.405.2	4	nut m 8 p.1
38	2.1310.004.2	4	flat washer 8.4x17
39	0.037.1151.0/10	1	cover

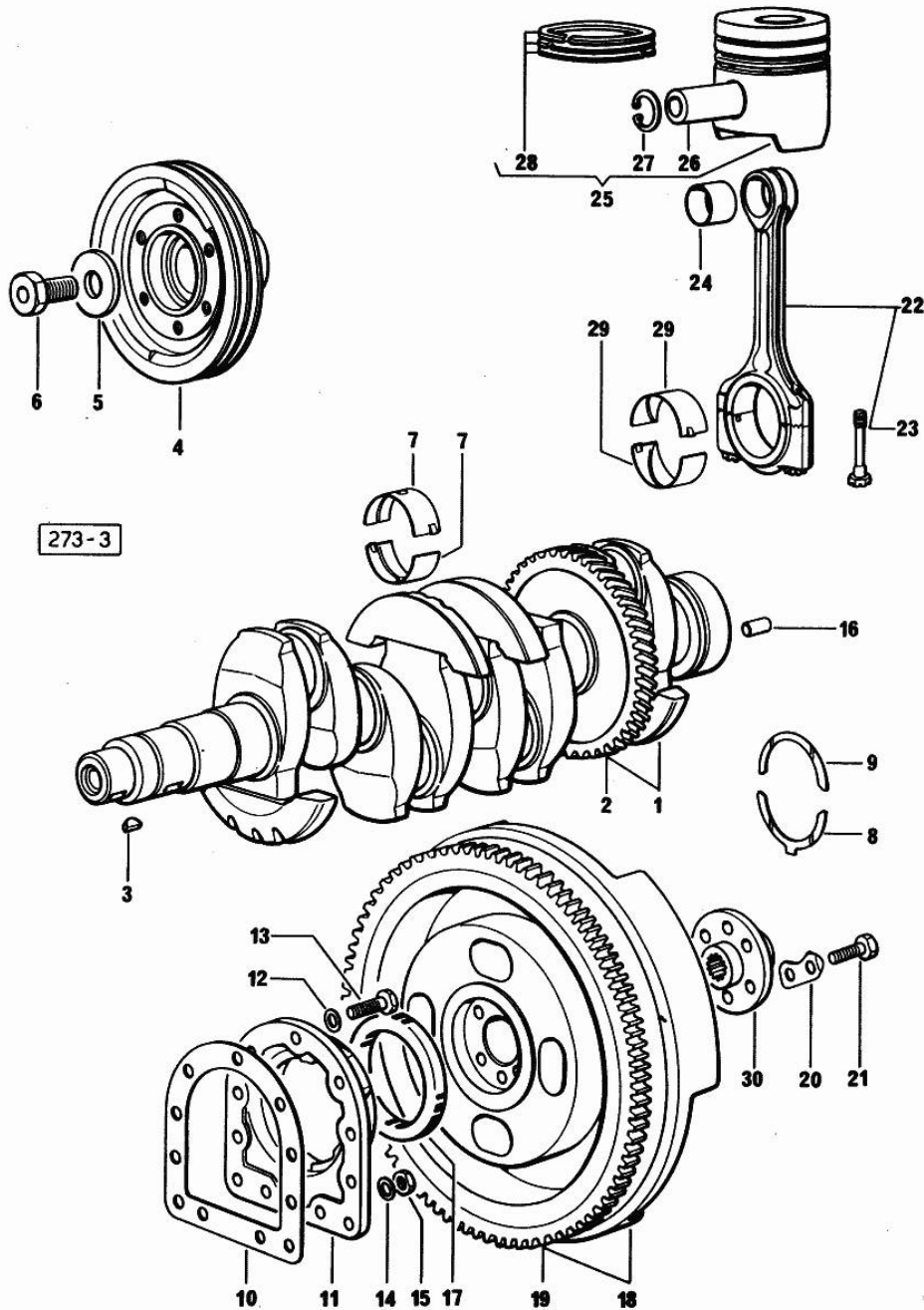
Section: ENGINE

CRANKSHAFT

Fig.	P/n	QTY	Name
------	-----	-----	------

Notes:
[H-496 T]

1	0.044.1267.4/20	1	crankshaft
1	2.1630.611.0	1	roll pin 6 x 24
2	0.044.1265.0/20	1	gear
3	2.1799.002.0	1	stick 10x13
4	0.059.1244.0	1	pulley
5	0.001.6020.0	1	shoulder
6	2.0129.032.2	1	screw m 24 p.2x45
7	0.029.0066.0		main half bushing - mm 1.00
7	0.029.1215.0/10	10	main half bushing
7	0.029.1215.7		main half bushing - mm 0.25
7	0.029.1215.8		main half bushing - mm 0.50
7	0.029.1215.9		main half bushing - mm 0.75
8	0.001.4547.0		shoulder ring + mm 0.05
8	0.001.4548.0		shoulder ring + mm 0.10
8	0.001.4549.0		shoulder ring + mm 0.15
8	0.042.1219.0	2	shoulder ring STANDARD
9	0.001.4544.0	2	shoulder ring + mm 0.05
10	0.029.1250.0	1	gasket
11	029.1240.0/10	1	-
12	2.1474.010.1	7	spring washer 10
13	2.0112.309.2	7	screw m 10 p.1.5 x 25
14	2.1560.006.0	2	gasket 10.2 x 16
15	2.1011.321.2	1	nut m 10 p.1.25
16	2.1652.915.0	1	cylindrical plug 12x35
17	2.1519.009.0/10	1	special oil seal
18	0.046.1256.3	1	flywheel
19	0.047.1242.0	1	crown wheel z=128
20	2.1379.006.0	3	lock-tab 15x15x36,5
21	2.0122.517.7	6	screw m 14 p.1.5x45
22	0.057.1220.3/10	4	engine connecting rod
23	0.039.1250.0	8	screw m 14 p.1.5x63
24	2.1559.114.0/10	4	special bushing
25	0.058.0060.6	4	complete piston STANDARD
26	0.054.1236.0	4	piston pin
27	2.1411.014.1	8	circlip 35
28	0.057.0051.6	4	piston ring set
29	0.052.1225.0	8	con.rod half bushing
29	0.052.1225.7		con.rod half bushing - mm 0.25
29	0.052.1225.8		con.rod half bushing - mm 0.50
29	0.052.1225.9	1	con.rod half bushing - mm 0.75
30	0.170.3650.0	1	flange



CRANKSHAFT - COUNTER-ROTATING WEIGHTS

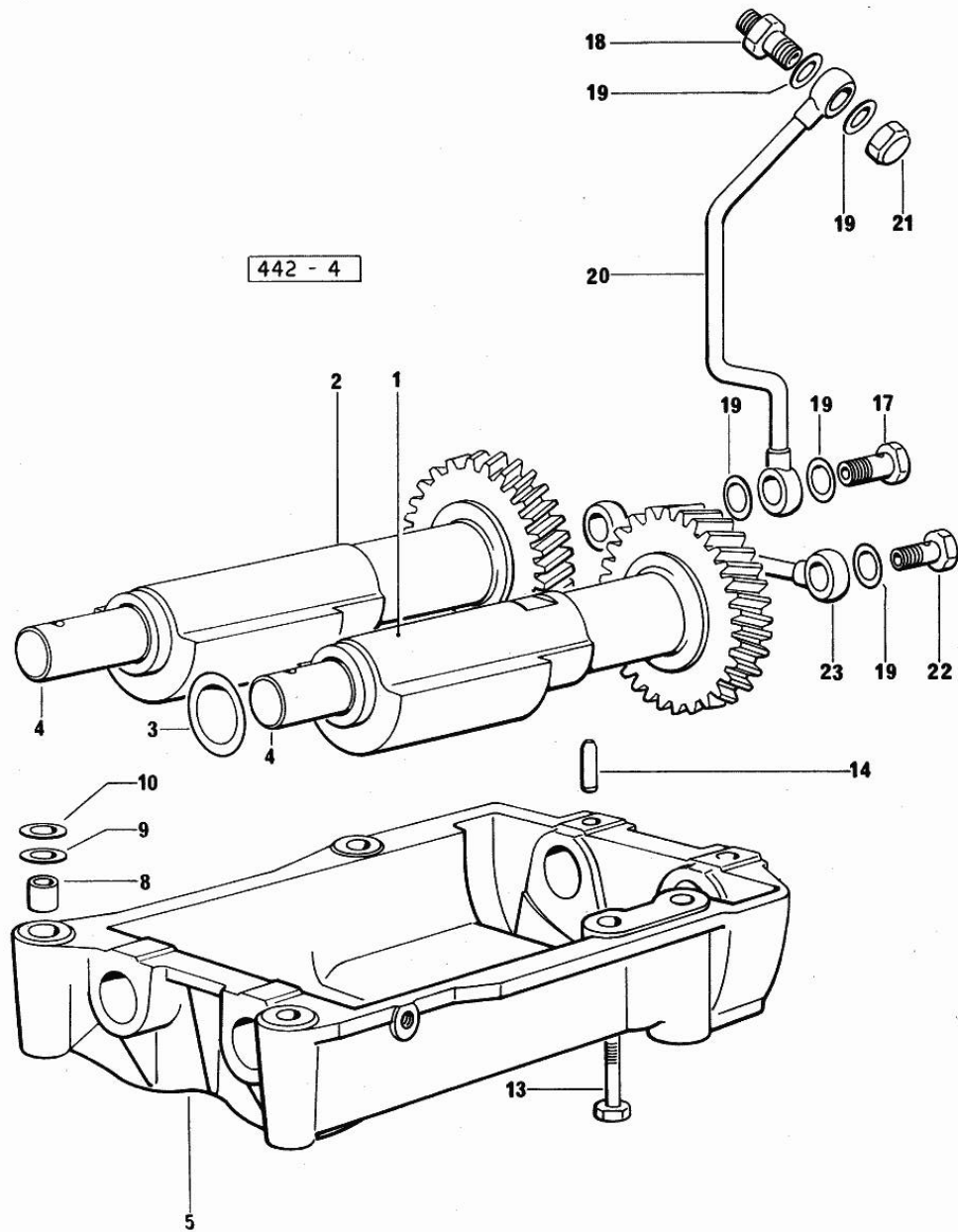


Fig.	P/n	QTY	Name
------	-----	-----	------

Notes:
[H-496 T]

1	0.044.1263.3/20	1	mass sx/lh/li
1	2.1559.115.0	2	special bushing 26x30x30
2	0.044.1261.3/10	1	mass dx/rh/re
2	2.1559.115.0	2	special bushing 26x30x30
3	2.1589.050.0/10	4	shoulder ring 26.1x38x1
4	0.044.1266.0/20	2	shaft
5	0.059.1250.0/10	1	support
8	2.1579.626.0	2	spacer 13.2x16x11
9	2.1579.628.0	4	spacer 16.5x26x0.1
10	2.1589.048.0	4	shoulder ring 16.5x26x0.3
13	2.0112.426.1	4	screw m 12 p.1.75x85
14	2.1631.717.0	2	roll pin 8 x 40
17	2.3339.515.1	1	pipe union m 12 p.1.25
18	2.3319.041.1	1	pipe union m 12 p.1.25-p.1.75
19	2.1560.007.0	7	gasket 12.2x16
20	0.059.1550.2	1	tube
21	2.1019.048.1	1	special nut m 12 p.1.5
22	2.3332.003.1	1	pipe union m 12 p.1.25
23	0.319.1550.3	1	tube

Section: ENGINE
CYLINDER HEAD

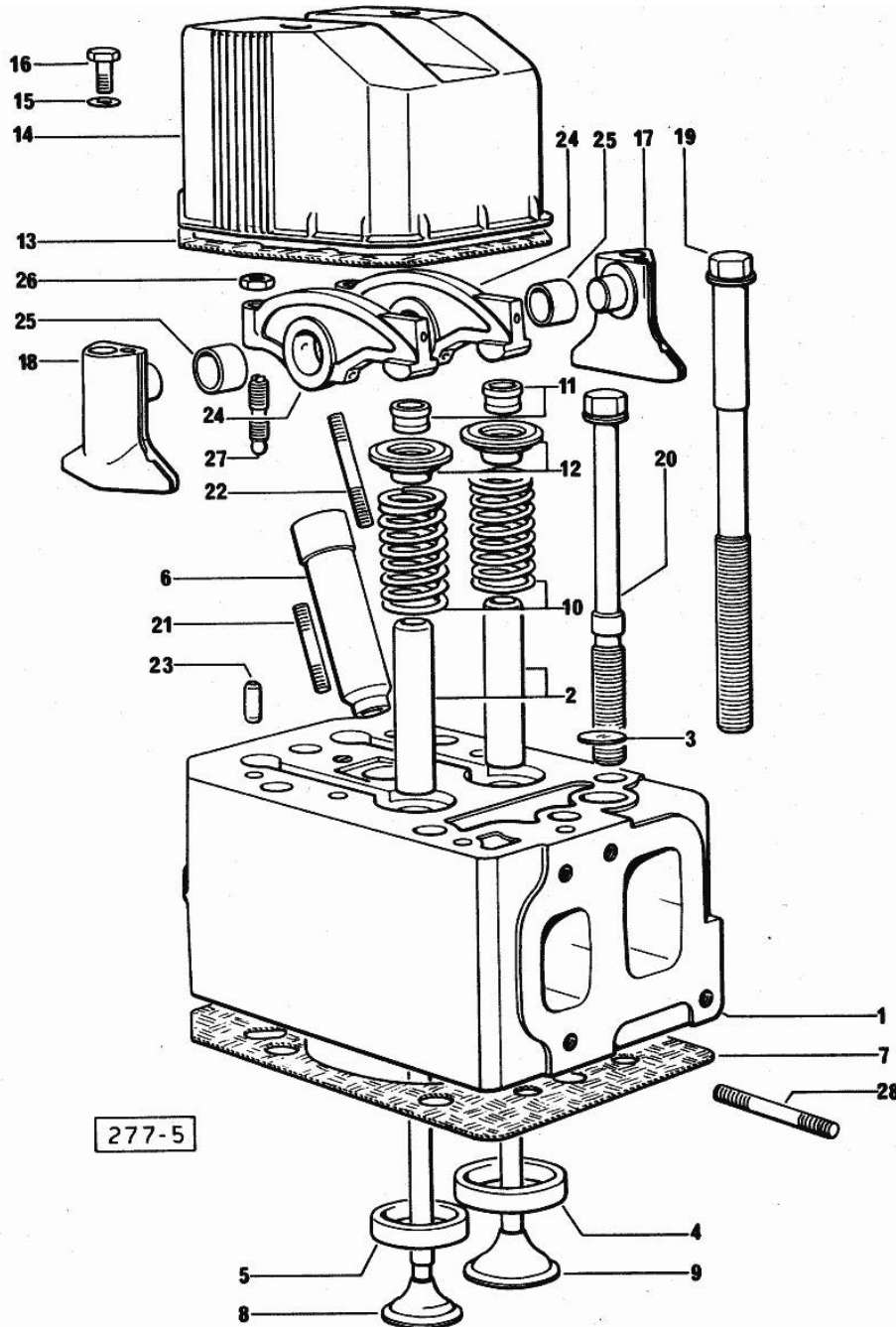


Fig.	P/n	QTY	Name
------	-----	-----	------

Notes:
[H-496 T]

1	0.057.1410.3/60	4	old part number
2	0.057.1416.0	8	valve guide
3	2.3170.010.1	4	expansion plug 25
4	0.057.1450.0/10	4	valve seat
5	0.057.1451.0	4	valve seat
6	0.057.1452.0/10	4	bush
7	0.057.1456.0/20	4	gasket
8	0.058.1421.0/10	4	exhaust valve
9	0.058.1420.0/10	4	inlet valve
10	2.4019.228.0	8	spring
11	0.058.1423.0	8	cone
12	0.058.1425.0/10	8	cup
13	0.057.1457.0/10	4	gasket
14	0.057.1440.0/10	4	small cap
15	2.1560.004.0	8	copper gasket 8.2 x 14
16	2.0119.108.2	8	old part number
17	0.057.1430.0	4	support
18	0.057.1453.0	4	support
19	0.057.1454.0/10	8	screw
20	0.057.1455.0/10	16	screw
21	2.0432.007.1	4	stud bolt m 8 p.1.25 / p.1 x 30
22	2.0432.011.1	4	stud bolt m 8 p.1.25 / p.1 x 40
23	2.1652.708.0	16	cylindrical plug 8x18
24	0.057.1432.3/10	8	rocker arm
25	2.1559.141.0	8	special bushing
26	2.1011.405.2	8	nut m 8 p.1
27	0.021.1434.0	8	screw
28	2.0432.009.1	7	stud bolt m 8 p.1.25 / p.1 x 35
28	2.0432.026.1	1	stud bolt m 8 p.1.25 - 1.00 x 110

Section: ENGINE
LUBRICATION

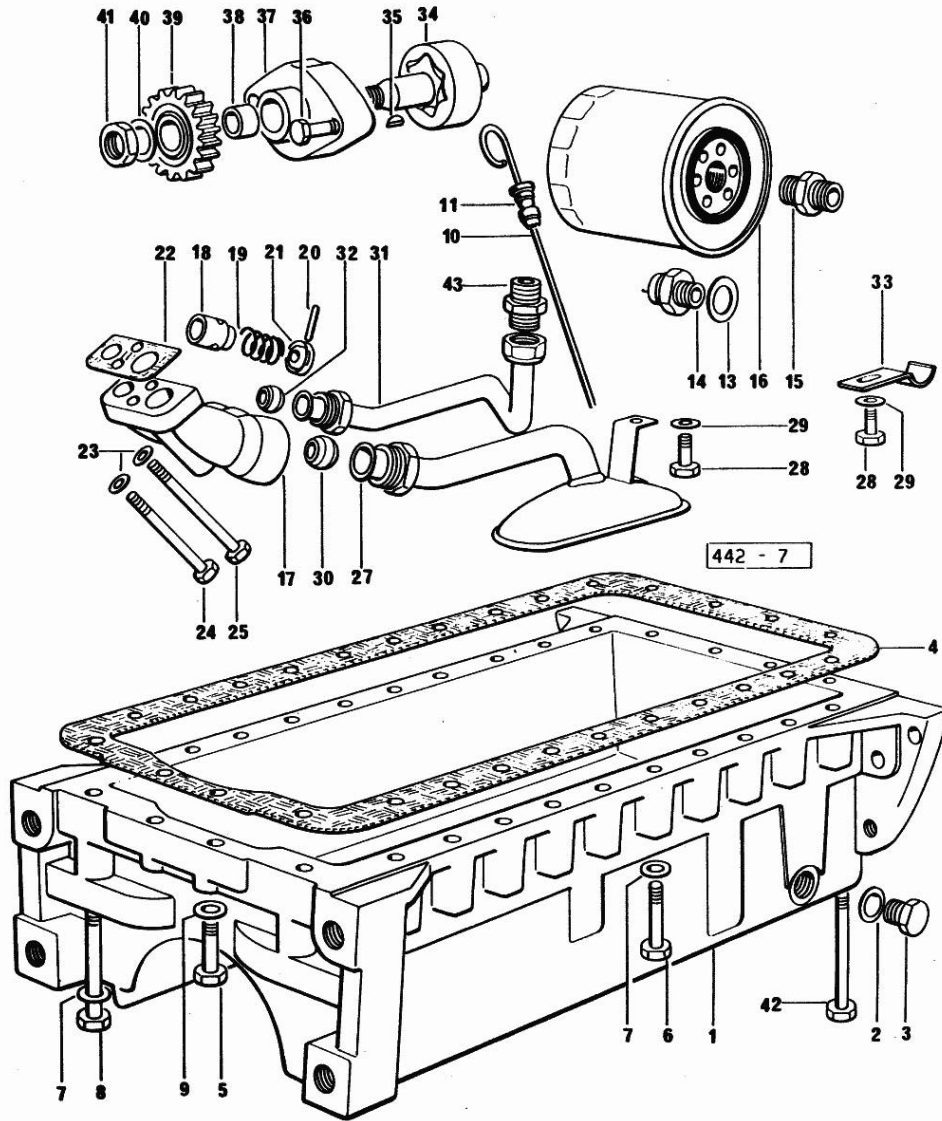


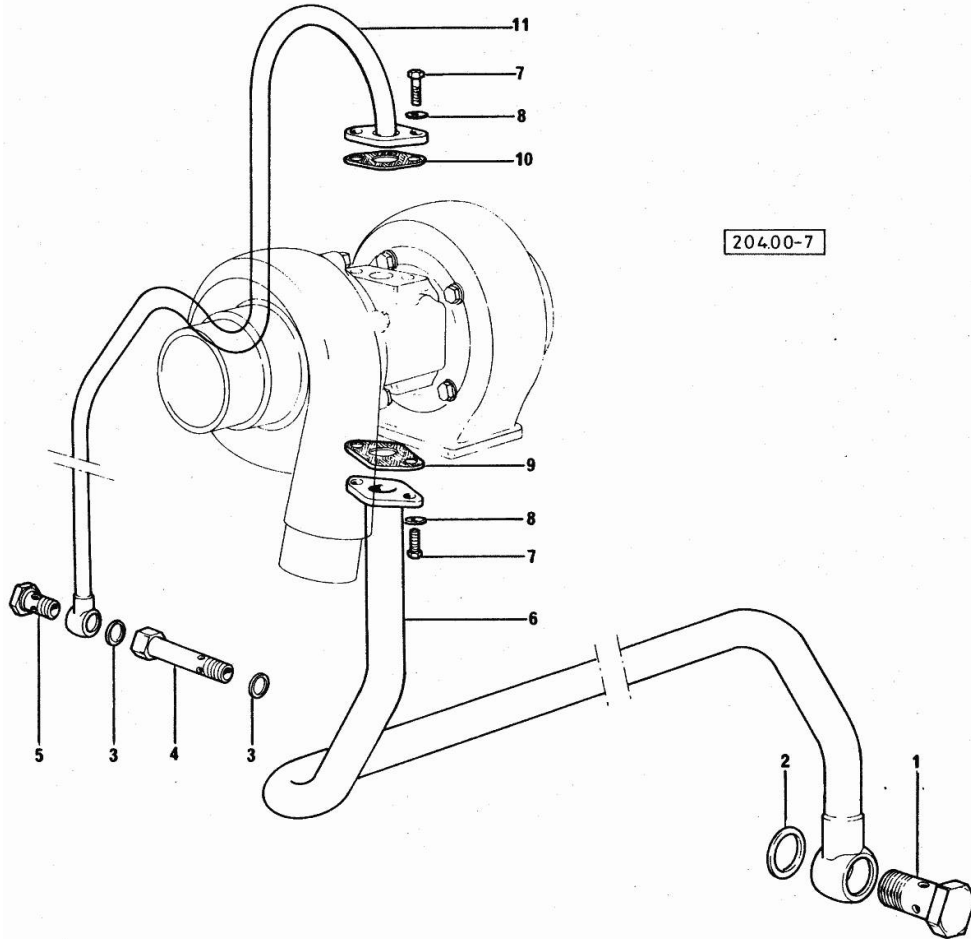
Fig.	P/n	QTY	Name
			Notes:
			[H-496 T]
1	0.045.1559.0	1	oil sump
2	2.1560.054.0	1	gasket 21 x 26
3	2.3199.001.2	1	plug 1/2" gas
4	0.036.1512.0	1	gasket
5	2.0112.219.2	2	screw m 8 p.1.25x55
6	2.0112.224.2	20	screw m 8 p.1.25x75
7	2.1470.004.2	26	lock washer 8
8	2.0112.231.2	2	screw m 8 p.1.25 x 110
9	2.1560.004.0	2	copper gasket 8.2 x 14
10	0.059.1513.3	1	dipstick
11	2.1539.035.0	1	special oil seal
13	2.1560.008.0	1	gasket 12.2 x 18
14	2.7099.040.0/10	1	pressure switch
15	2.3339.094.1/10	1	pipe fitting m 20 p.1.5-3/4 gas
16	2.4419.340.0	1	oil filter element
17	0.052.1530.0	1	tip
18	0.052.1571.0	1	small piston
19	2.4019.270.1	1	spring 9.7x54x2
20	2.1630.213.0	1	roll pin 3x32
21	0.054.1558.0/10	1	stop
22	0.037.1557.0/20	1	gasket
23	2.1480.014.1	2	washer 8
24	2.0112.225.2	1	screw m 8 p.1.25 x 80
25	2.0112.231.2	1	screw m 8 p.1.25 x 110
27	0.044.1556.3/10	1	tube
28	2.0112.204.2	2	screw m 8 p.1.25x14
29	2.1310.004.2	2	flat washer 8.4x17
30	2.3359.014.1	1	nosepiece
31	0.059.1534.2	1	tube
32	2.3359.017.1	1	nosepiece
33	0.059.1551.0	2	bracket
34	0.044.1524.3/20	1	rotor
35	2.1720.005.0	1	key 4x5
36	2.0112.215.2	2	screw m 8 p.1.25 x 40
37	0.036.1520.3/20	1	pump casing
38	2.1559.086.0/10	1	bush
39	0.040.1521.0/10	1	gear z = 27
40	2.1310.007.2	1	flat washer 13 x 24
41	2.1121.109.2	1	self-locking nut m 12 p.1.25
42	2.0112.237.2	4	screw m 8 p.1.25x140
43	2.3339.159.1/10	1	pipe fitting

Section: ENGINE
LUBRICATION

Fig.	P/n	QTY	Name
------	-----	-----	------

Notes:
 [H-496 T]

1	2.3332.008.1	1	old part number
2	2.1560.022.0	2	gasket
3	2.1560.008.0	3	gasket 12.2 x 18
4	0.057.1552.0	1	pipe fitting
5	2.3339.184.1	1	pipe union
6	0.059.1552.3	1	tube
7	2.0112.207.2	4	screw m 8 p 1.25 x 20
8	2.1474.009.1	4	spring washer 8
9	0.057.1558.0	1	gasket
10	0.057.1553.0	1	gasket
11	0.057.1550.3	1	tube



Section: ENGINE

FUEL SYSTEM - INJECTION PUMP

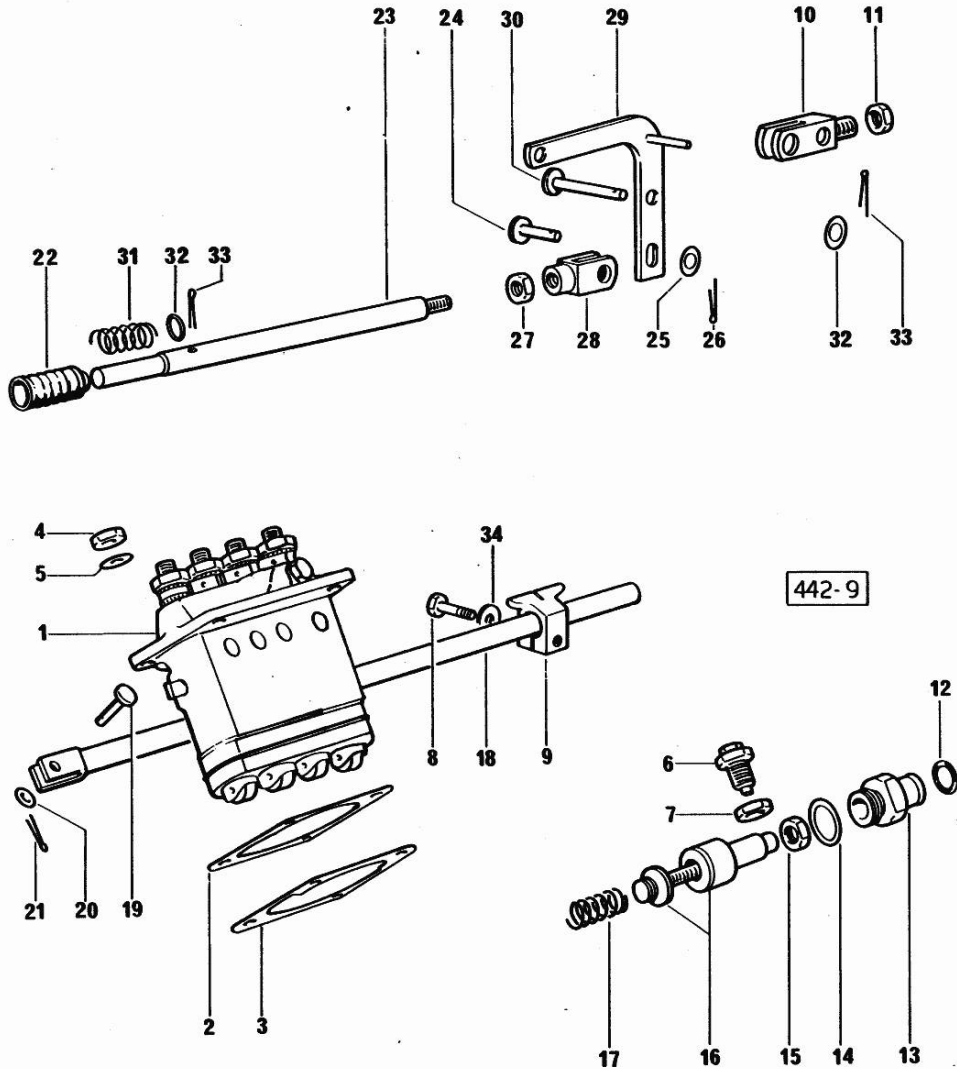


Fig.	P/n	QTY	Name
------	-----	-----	------

Notes:
[H-496 T]

1	2.4649.280.0	1	injector pump ☞ 2.4649.280.0 ☞ 01.00.12
2	0.044.1660.0		shim mm 0.1
2	0.044.1661.0		shim mm 0.20
3	0.044.1652.0		shim mm 0.1
3	0.044.1653.0		shim mm 0.20
4	2.1099.056.1	4	special nut m8 p.1
5	2.1311.006.2	4	flat washer 8
6	0.057.1657.3	1	adapter
7	2.1099.066.1	1	special nut
8	2.0112.004.2	1	screw m 6 p.1 x 14
9	0.057.1650.0	1	bracket
10	0.044.1656.0	1	support
11	2.1011.506.2	1	nut m 10 p.1
12	2.1530.015.0	1	oil seal 8.30x2.40
13	0.041.1666.0/40	1	plug
14	2.1560.019.0	1	copper gasket 24.3x30
15	2.1011.505.2	1	nut m 8 p.1
16	0.062.1652.6	1	adapter
17	2.4019.178.1/10	1	spring 14.6x34x0.8
18	0.044.1613.2	1	rod
19	2.1679.048.2	1	pin
20	2.1311.004.1	1	flat washer 6
21	2.1690.205.0	1	split pin A2x12
22	0.000.5617.0	1	guard
23	0.057.1671.0	1	ferrule
24	2.1679.048.2	1	pin
25	2.1310.002.2	1	flat washer 6.4x12.5
26	2.1690.205.0	1	split pin A2x12
27	2.1011.103.2	1	nut m 6 p.1
28	2.3510.003.2	1	fork m 6
29	0.054.1674.0	1	lever
30	2.1670.303.2	1	pin 8x18x15
31	2.4019.232.1	1	spring
32	2.1310.004.2	2	flat washer 8.4x17
33	2.1690.206.0	2	split pin
34	2.1579.455.1	1	spacer 6.2x12x14

Section: ENGINE

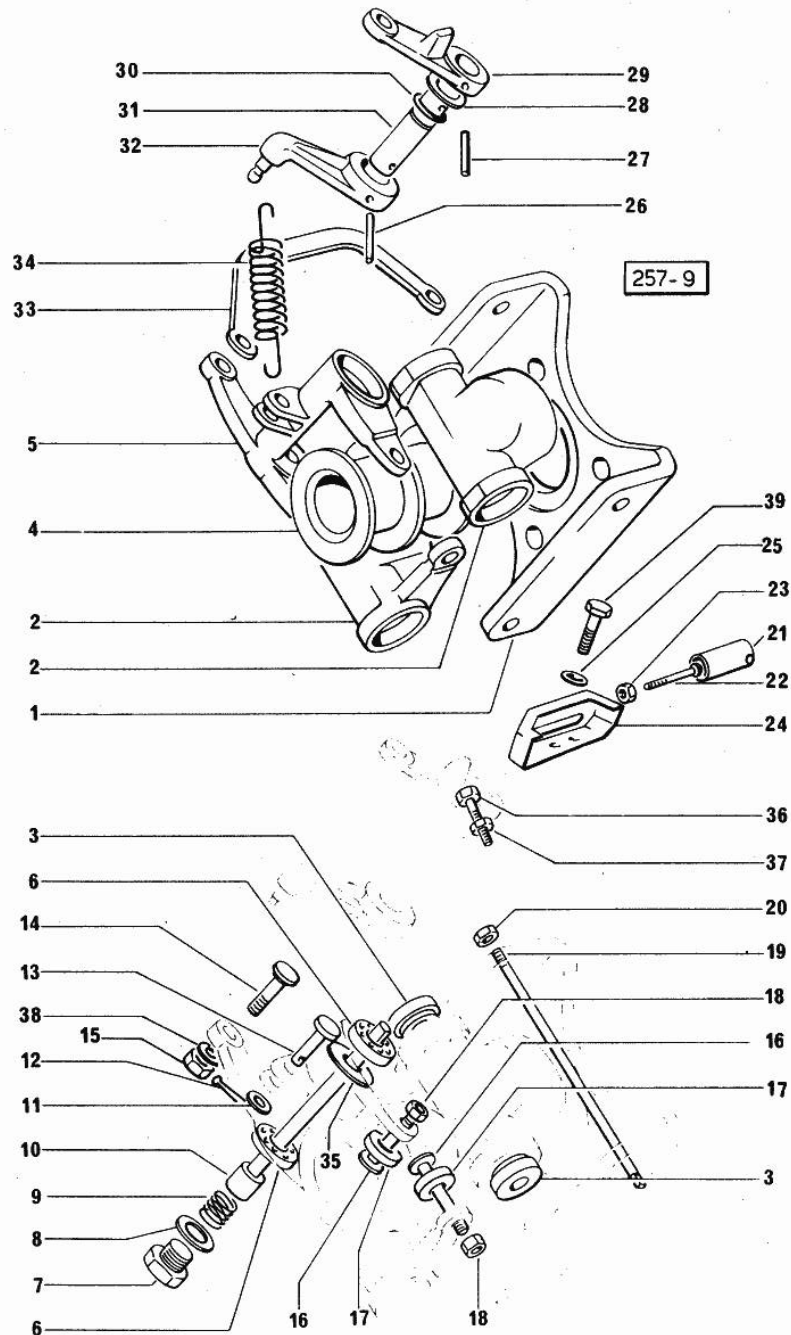
SUPPLY-GROUND GOVERNOR

Fig.	P/n	QTY	Name
------	-----	-----	------

Notes:

[H-496 T]

1	0.062.1615.0	1	bracket
2	0.062.1616.0	2	adjust.rocker
4	0.041.1618.0	1	sleeve
5	0.062.1619.0	1	lever
6	2.2999.158.0	2	special bearing
7	2.3110.002.1	1	plug 1/4" gas
8	2.1560.008.0	1	gasket 12.2 x 18
9	2.4019.177.1	1	spring
10	0.041.1620.0	1	pin
11	2.1310.001.2	1	flat washer 5.3 x 10
12	2.1690.104.0	1	split pin a.1 5x10
13	2.1670.005.2	1	pin 5x22x20
14	0.041.1656.0	1	pin
15	2.1011.103.2	1	nut m 6 p.1
16	0.054.1654.0/10	4	pin
17	0.054.1655.0	4	roller
18	2.1019.007.1	4	special nut m 6 p.1
19	0.062.1617.0/10	2	pin
20	2.1120.305.2	2	self-locking nut m 8 p.1 x 8
21	0.024.1680.0	1	guard
22	2.0220.317.2	1	screw m 5x0.8x35
23	2.1011.102.2	1	nut m 5 p.0.7
24	0.052.1661.2/20	1	small cover
25	2.1310.002.2	2	flat washer 6.4x12.5
26	2.1630.511.0	1	roll pin 5x24
27	2.1630.410.0	1	roll pin 4 x 20
28	2.1599.141.0	1	shoulder ring 12.5x19x1.5
29	0.041.1621.0	1	lever
30	2.1530.016.0	1	oil seal 8.73 x 1.78
31	0.041.1655.0/10	1	pin
32	0.042.1621.0	1	lever
33	0.042.1622.0	1	rod
34	2.4049.095.1/10	1	spring
35	2.1599.248.1	2	shim 7x11x1
36	2.0112.009.2	1	screw m 6 p.1 x 25
37	2.1011.103.2	1	nut m 6 p.1
38	2.1481.005.1	4	washer 6, d128
39	2.0119.081.2	2	screw



Thank you so much for reading.
Please click the “Buy Now!”
button below to download the
complete manual.



After you pay.

You can download the most
perfect and complete manual in
the world immediately.

Our support email:

ebooklibonline@outlook.com