

Section: ENGINE
CRANKCASE

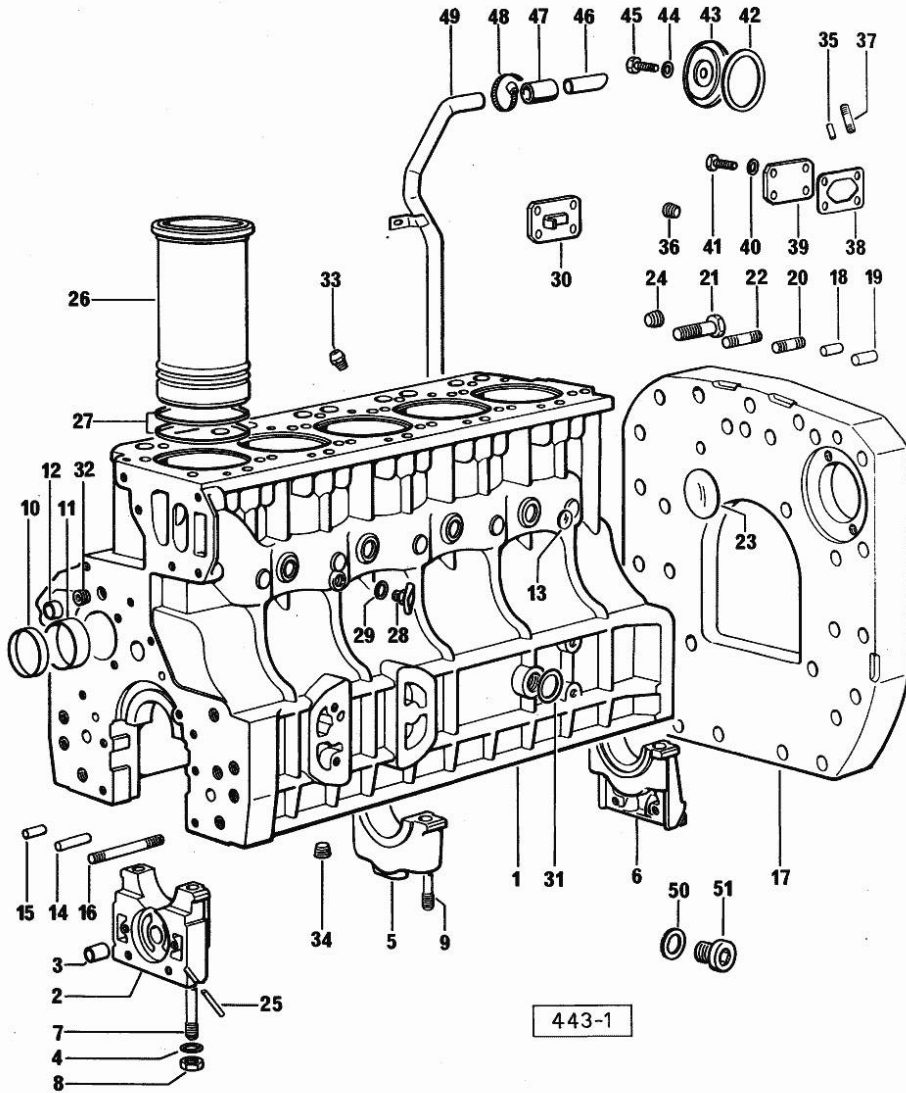
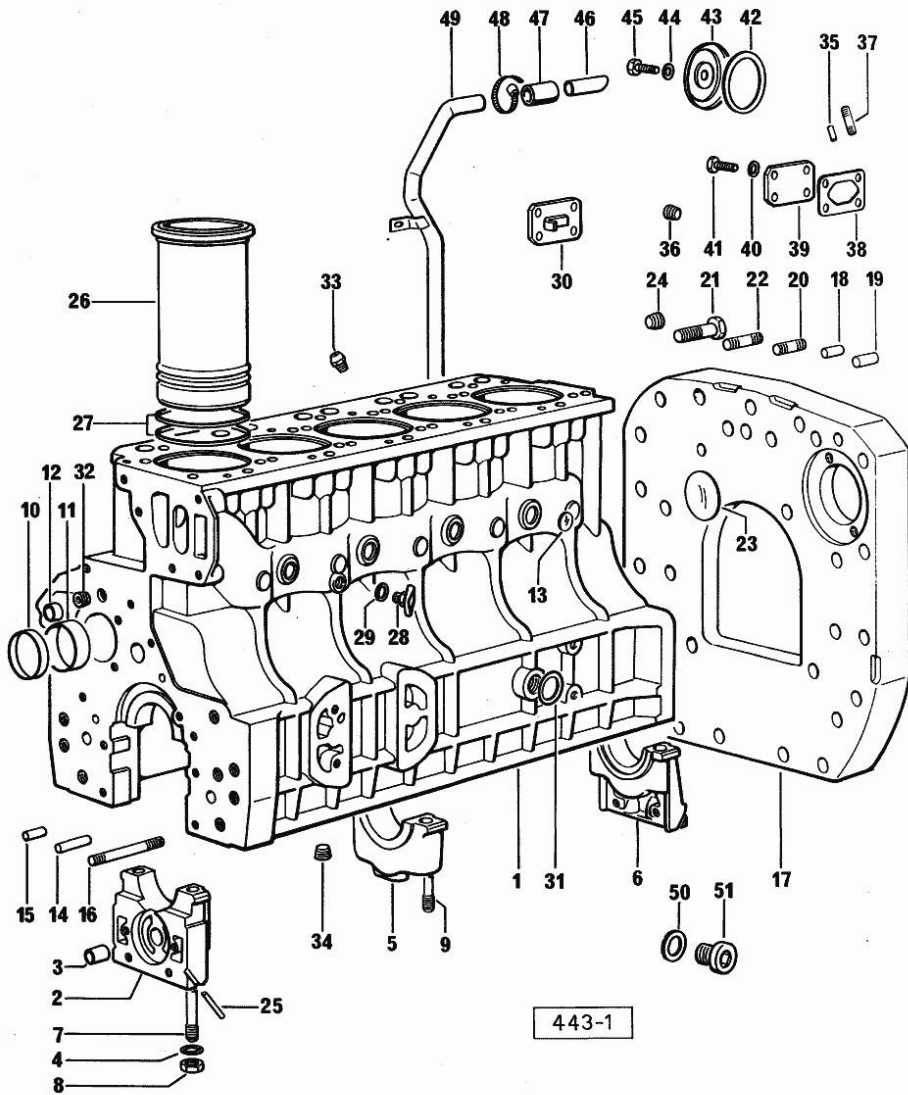


Fig.	P/n	QTY	Name
Notes:			
[H-5116 T]			
0	0.058.0050.6	1	gasket set FOR ENGINE ASSEMBLY
1	0.058.1110.4/50	1	crankcase
2	0.052.1112.3	1	support
3	2.1559.090.0/10	1	bushing 14.24x19.06x27
4	2.1599.318.7	12	flat washer
5	0.052.1113.0	4	support
6	0.052.1116.0	1	support
7	0.052.1151.0	4	stud bolt
8	2.1099.064.7	12	special nut
9	0.052.1150.0	8	stud bolt
10	2.1559.157.0	1	special bushing
11	2.1559.156.0	3	special bushing
12	2.1559.111.0/10	2	special bushing 11.5x14.1x10
13	2.3170.012.1	3	expansion plug 30
14	2.1699.114.0	1	pin 8x55
15	2.1653.711.0	1	pin
16	2.0432.025.1	2	stud bolt m 8 p 1.25-1x100
17	0.071.1150.0	1	flange
18	2.1652.911.0	2	cylindrical plug 12x25
19	2.1653.708.0	2	pin 8x18
20	2.0432.153.1	2	stud bolt m 10 p.1.5 / p.1.25 x 20
21	2.0112.513.1	10	screw m 14 p.2 x 35
22	2.0432.257.1	2	stud bolt m 12 p.1.75 - 1.25 x 30
23	2.3170.023.1	1	expansion plug 65
24	2.3130.003.1	2	plug 3/8" gas
25	0.029.1154.0	4	gasket
26	0.057.1120.0	5	engine cylinder
27	2.1539.029.0	10	special oil seal
28	0.049.1152.0	1	cock
29	2.1560.009.0	1	gasket 14.2x18
30	0.057.1162.3/20	1	cover
31	2.1560.022.0	1	gasket
32	2.3130.002.1	2	plug 1/4" gas
33	0.071.1151.3	5	valve
34	2.3130.001.1	5	plug 1/8" gas
35	2.1652.306.0	2	cylindrical plug 4x14
36	2.3139.001.1	5	plug
37	2.0432.003.1	8	stud bolt m 8 p.1.25 / p.1 x 20
38	0.057.1153.0	2	gasket
39	0.057.1152.0/10	1	cover

Section: ENGINE
CRANKCASE

Fig.	P/n	QTY	Name
40	2.1310.004.2	8	flat washer 8.4x17
41	2.0112.205.2	8	screw m 8 p.1.25 x 16
42	0.057.1151.0	1	gasket
43	0.057.1150.0	1	cover
44	2.1560.003.0	1	copper gasket 8.2 x 12
45	2.0112.204.2	1	screw m 8 p.1.25x14
46	0.057.1154.0	1	tube
47	0.057.1158.0	1	sleeve
48	2.6850.007.0	1	clamp 25-40
49	0.079.1150.2/10	1	old part number
50	2.1560.017.0	3	gasket 22.2 x 27
51	2.3120.002.4	3	plug m 22 x 1.5



443-1

Section: ENGINE
TIMING CASE

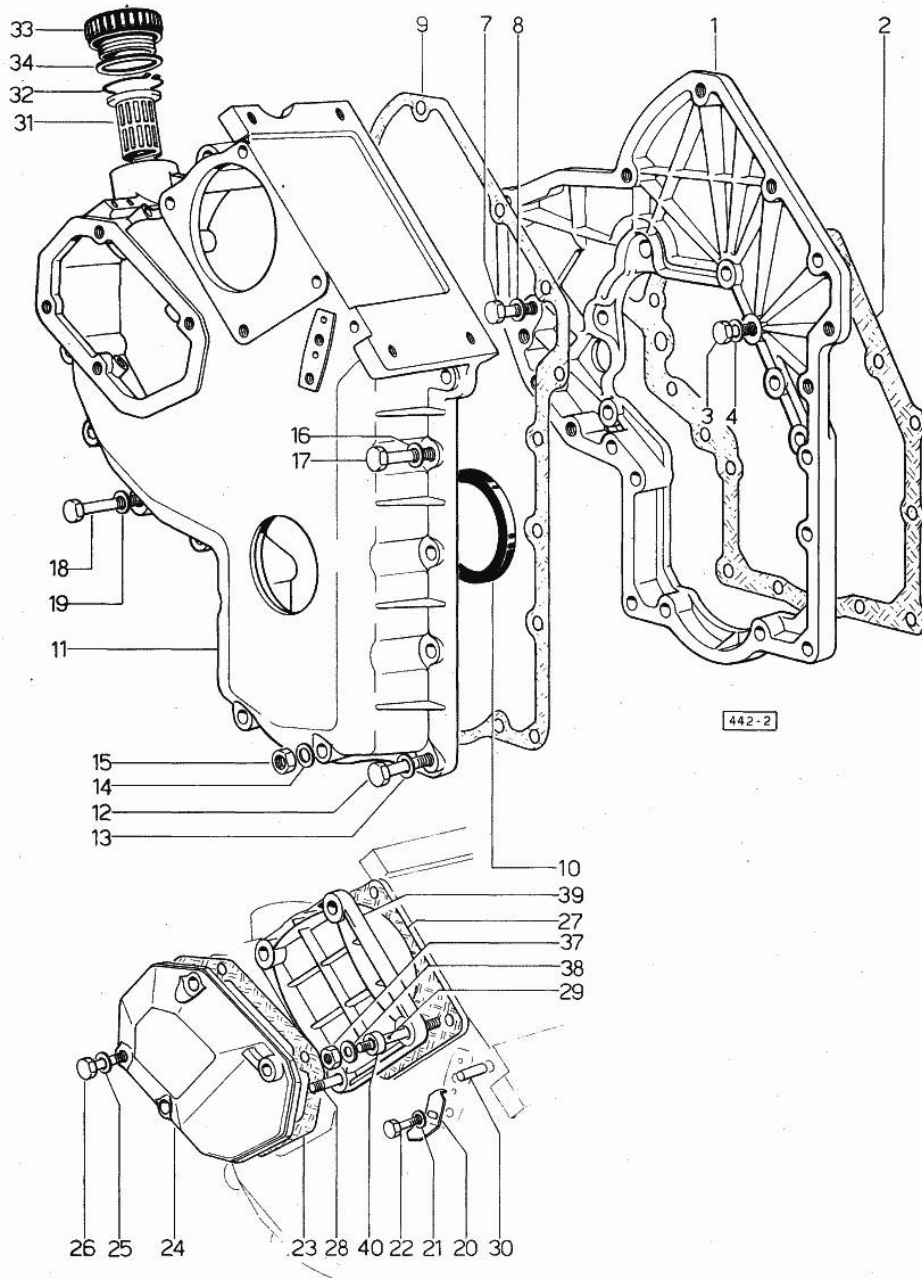


Fig.	P/n	QTY	Name
------	-----	-----	------

Notes:
[H-5116 T]

1	0.079.1131.0	1	flange
2	0.057.1155.0	1	gasket
3	2.0112.209.2	2	screw m 8 p 1.25 x 25
4	2.1480.014.1	2	washer 8
7	2.0112.207.2	3	screw m 8 p 1.25 x 20
8	2.1480.014.1	3	washer 8
9	0.041.1152.0	1	gasket
10	2.1519.010.0	1	special oil seal 58x80x10
11	0.048.1132.0/30	1	guard
12	2.0112.217.2	5	screw m 8 p.1.25 x 45
13	2.1480.014.1	5	washer 8
14	2.1560.003.0	2	copper gasket 8.2 x 12
15	2.1011.405.2	2	nut m 8 p.1
16	2.1480.014.1	3	washer 8
17	2.0112.211.2	3	screw m 8 p.1.25 x 30
18	2.0112.222.2	4	screw m 8 p.1.25x65
19	2.1480.014.1	4	washer 8
20	0.057.1156.0	1	index
21	2.1310.004.2	1	flat washer 8.4x17
22	2.0112.204.2	1	screw m 8 p.1.25x14
23	0.048.1151.0/10	1	gasket
24	0.048.1150.0/20	1	cover
25	2.1560.005.0	4	copper gasket 10.2 x 14
26	2.0112.315.2	4	screw m 10 p.1.5 x 40
27	0.041.1154.0	1	gasket
28	2.0432.013.1	1	stud bolt m 8 p.1.25 / p.1 x 45
29	2.0432.028.1	3	stud bolt m 8 p.1.25-1x130
30	2.1653.717.0	1	pin 8 x 40
31	0.041.1159.0/10	1	filter
32	2.1411.012.1	1	circlip 30
33	0.041.1135.3	1	plug
34	2.1569.072.0	1	gasket 32 x 39.5 x 2
37	2.1011.405.2	4	nut m 8 p.1
38	2.1310.004.2	4	flat washer 8.4x17
39	0.037.1151.0/10	1	cover

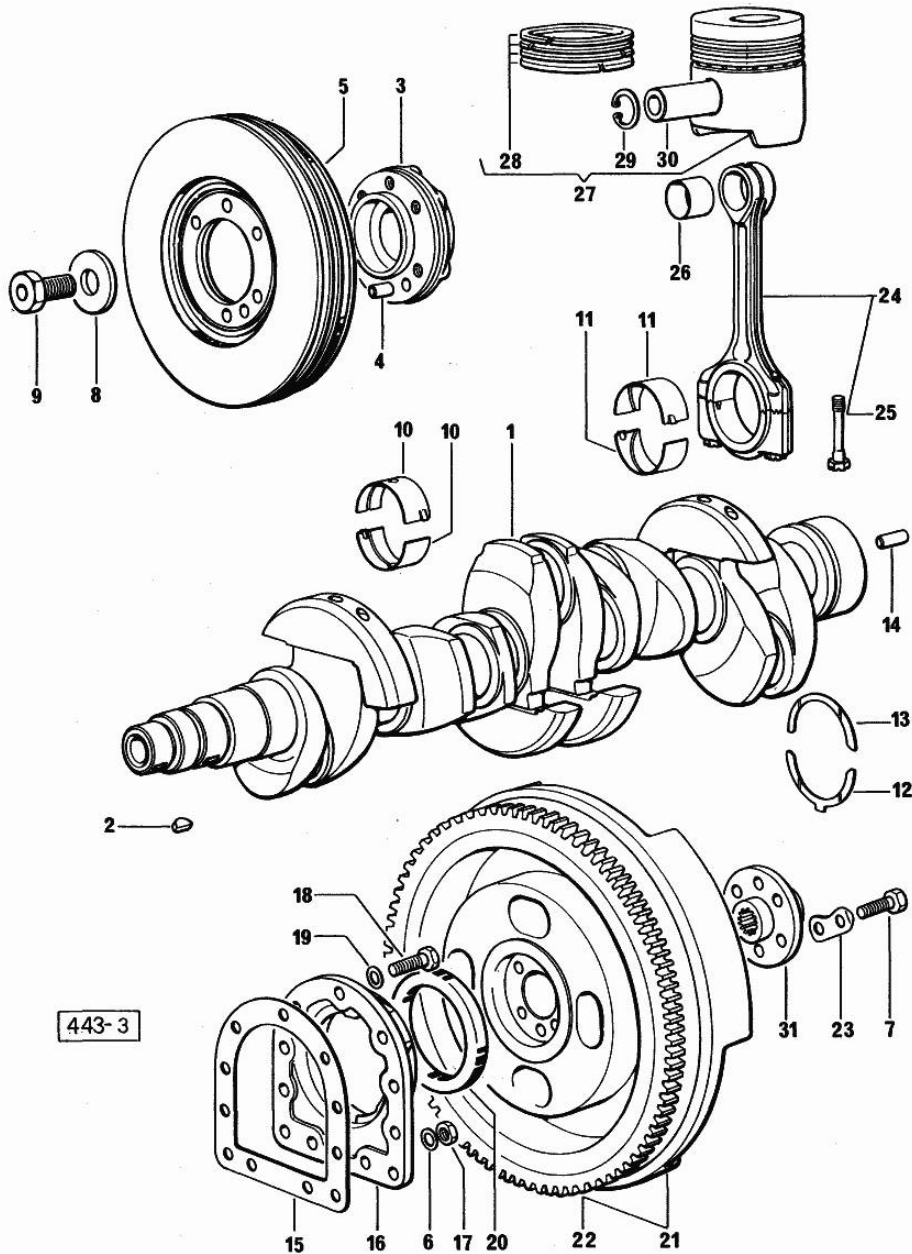
Section: ENGINE

CRANKSHAFT

Fig.	P/n	QTY	Name
------	-----	-----	------

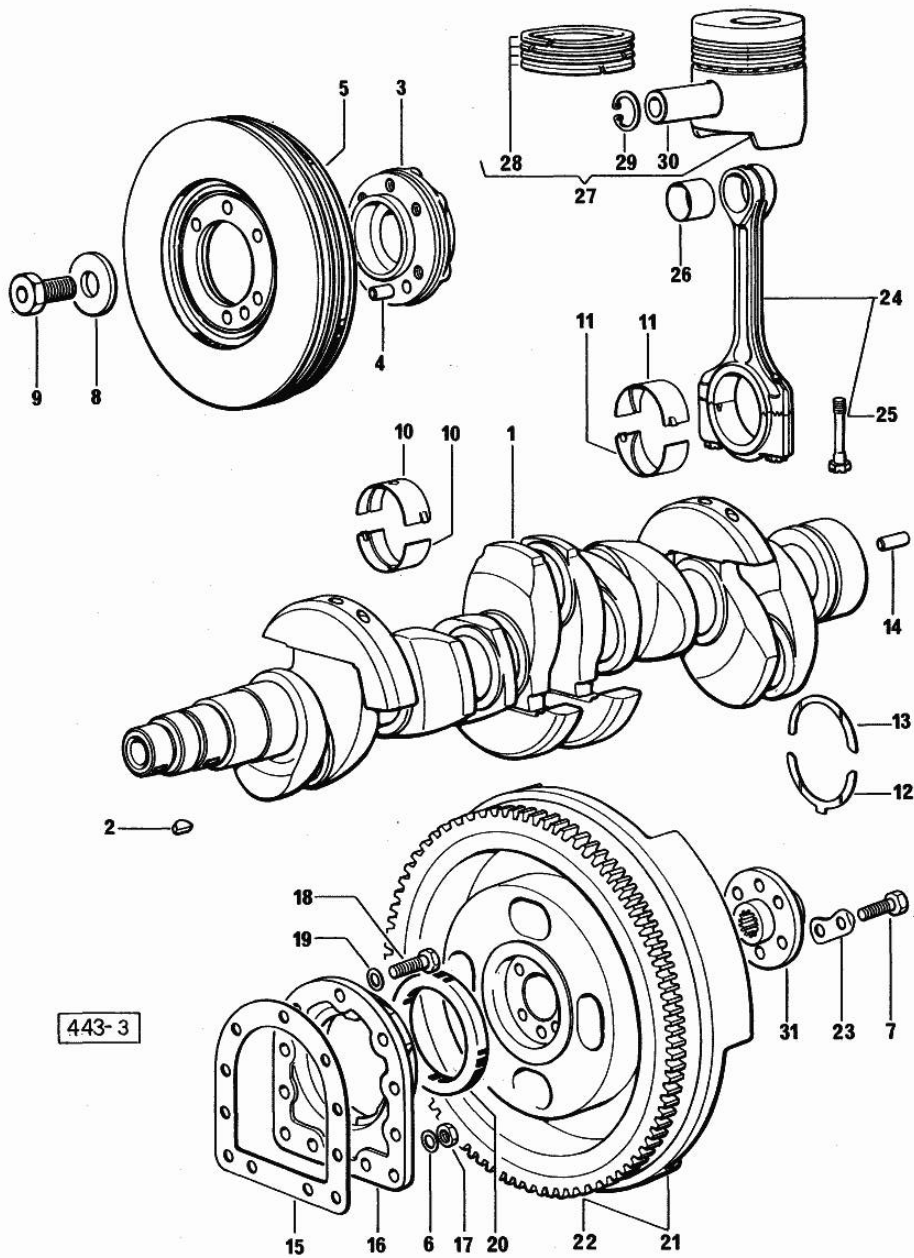
Notes:
[H-5116 T]

1	0.041.1210.4/10	1	old part number
2	2.1799.002.0	1	stick 10x13
3	0.037.1250.0/10	1	hub
4	2.1651.909.0	1	cylindrical plug 12 x 20
5	0.058.1246.3	1	antivibration pulley
6	2.1560.006.0	2	gasket 10.2 x 16
7	2.0122.517.7	6	screw m 14 p.1.5x45
8	0.001.6020.0	1	shoulder
9	2.0129.032.2	1	screw m 24 p.2x45
10	0.029.0066.0		main half bushing - mm 1.00
10	0.029.1215.0/10	12	main half bushing
10	0.029.1215.7		main half bushing - mm 0.25
10	0.029.1215.8		main half bushing - mm 0.50
10	0.029.1215.9		main half bushing - mm 0.75
11	0.052.1225.0	10	con.rod half bushing
11	0.052.1225.7		con.rod half bushing - mm 0.25
11	0.052.1225.8		con.rod half bushing - mm 0.50
11	0.052.1225.9		con.rod half bushing - mm 0.75
12	0.001.4547.0		shoulder ring + mm 0.05
12	0.001.4548.0		shoulder ring + mm 0.10
12	0.001.4549.0		shoulder ring + mm 0.15
12	0.042.1219.0	2	shoulder ring STANDARD
13	0.001.4544.0		shoulder ring + mm 0.05
13	0.001.4545.0		shoulder ring + mm 0.10
13	0.001.4546.0		shoulder ring + mm 0.15
13	0.042.1218.0	2	shoulder ring STANDARD
14	2.1652.915.0	2	cylindrical plug 12x35
15	0.029.1250.0	1	gasket
16	029.1240.0/10	1	-
17	2.1011.321.2	2	nut m 10 p.1.25
18	2.0112.309.2	7	screw m 10 p.1.5 x 25
19	2.1480.015.1	7	washer 10
20	2.1519.009.0/10	1	special oil seal
21	0.046.1256.3	1	flywheel
22	0.047.1242.0	1	crown wheel z=128
23	2.1379.006.0	3	lock-tab 15x15x36,5
24	0.057.1220.3/10	5	engine connecting rod
25	0.039.1250.0	10	screw m 14 p.1.5x63
26	2.1559.114.0/10	5	special bushing
27	0.058.0060.6	5	complete piston STANDARD
28	0.057.0051.6	5	piston ring set



Section: ENGINE
CRANKSHAFT

Fig.	P/n	QTY	Name
29	2.1411.014.1	10	circlip 35
30	0.054.1236.0	5	piston pin
31	0.170.3650.0	1	flange



Section: ENGINE

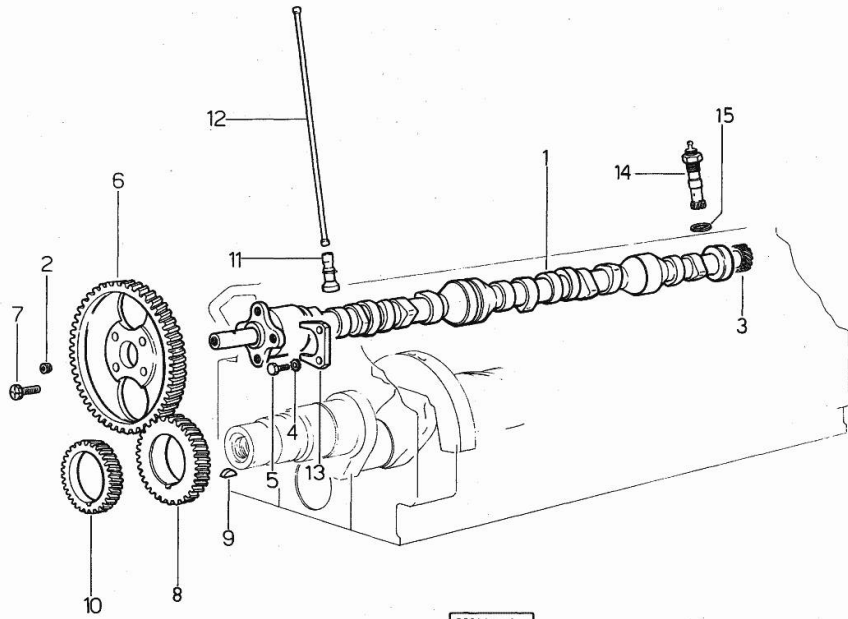
CAMSHAFT

Fig.	P/n	QTY	Name
------	-----	-----	------

Notes:

[H-5116 T]

1	0.058.1310.3	1	old part number
2	2.3130.001.1	1	plug 1/8" gas
3	0.041.1350.0	1	gear
4	2.1470.004.2	2	lock washer 8
5	2.0312.206.2	2	screw m 8 p 1.25 x 20
6	0.062.1321.0	1	gear z=66
7	2.0139.005.1	4	screw m 10 p.1 x 25
8	0.040.1320.0	1	gear z = 33
9	2.1720.010.0	1	key 5x9
10	0.040.1323.0/10	1	gear Z = 38
11	0.057.1330.0/10	10	tappets
12	0.057.1331.2	10	rod
13	0.057.1314.0	1	small plate
14	0.041.1355.3	1	transmission
15	2.1560.013.0	1	gasket 18.2x22



20600 - 4

Section: ENGINE
CYLINDER HEAD

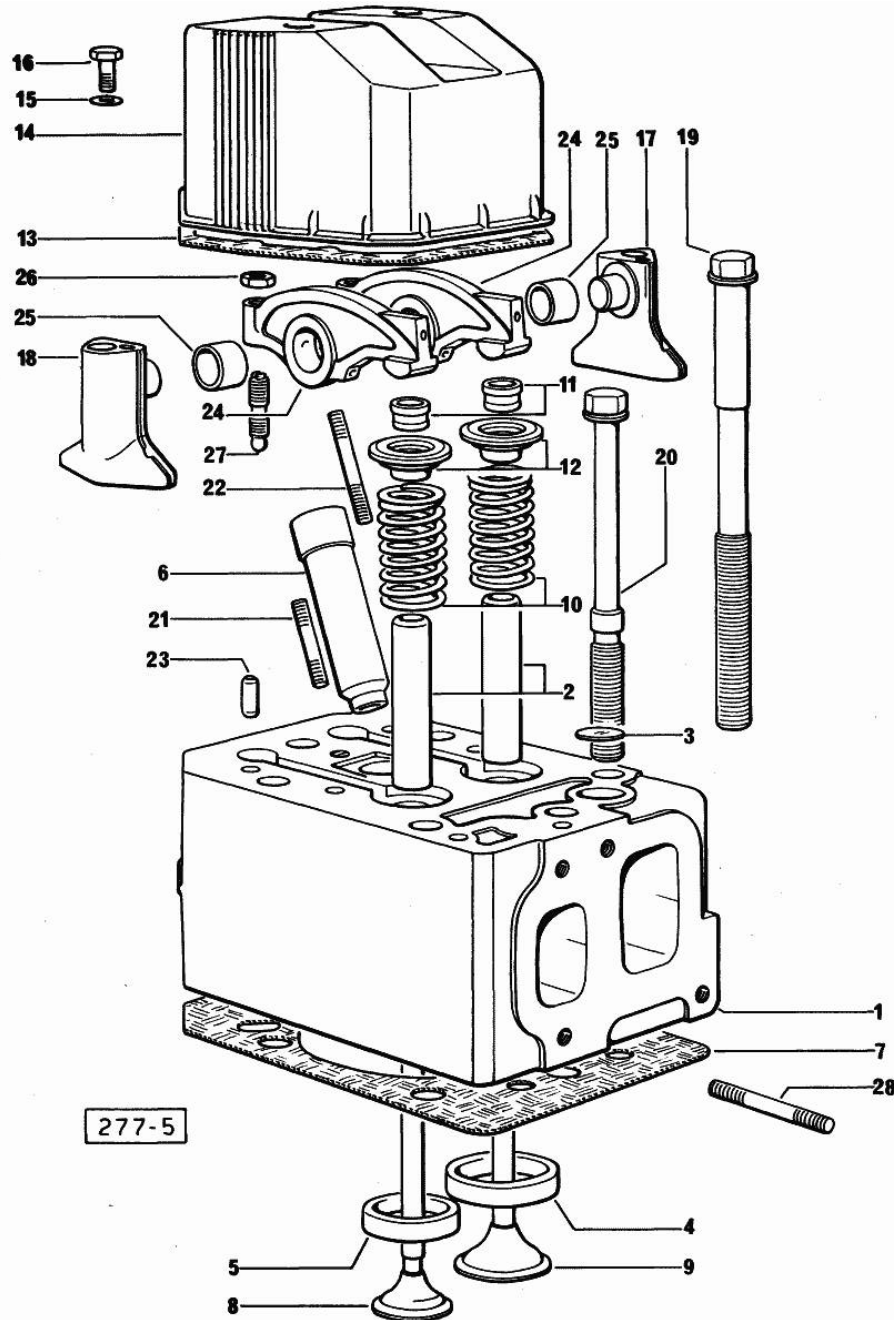


Fig.	P/n	QTY	Name
------	-----	-----	------

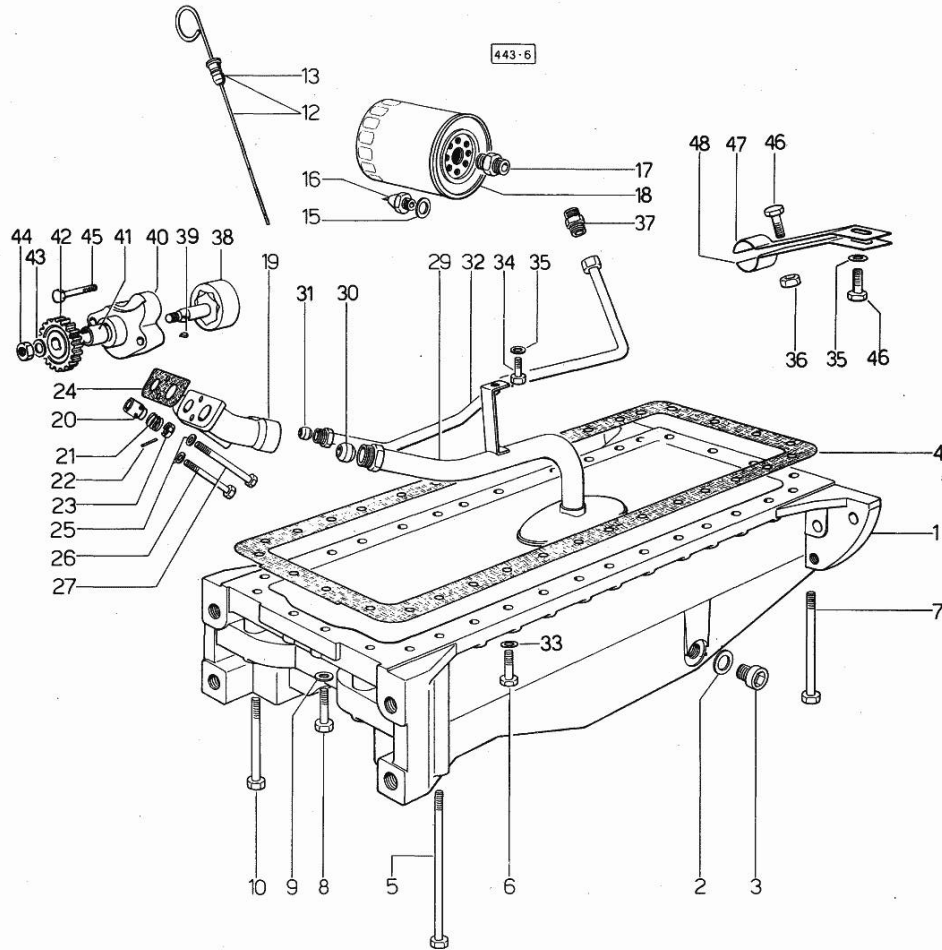
Notes:
[H-5116 T]

0	0.057.0057.6	1	gasket set FOR GRINDING VALVES OF 1 CYLINDER
1	0.057.1410.3/60	5	old part number
2	0.057.1416.0	10	valve guide
3	2.3170.010.1	5	expansion plug 25
4	0.057.1450.0/10	5	valve seat
5	0.057.1451.0	5	valve seat
6	0.057.1452.0/10	5	bush
7	0.057.1456.0/20	5	gasket
8	0.058.1421.0/10	5	exhaust valve
9	0.058.1420.0/10	5	inlet valve
10	2.4019.228.0	10	spring
11	0.058.1423.0	10	cone
12	0.058.1425.0/10	10	cup
13	0.057.1457.0/10	5	gasket
14	0.057.1440.0/10	5	small cap
15	2.1560.004.0	10	copper gasket 8.2 x 14
16	2.0119.108.2	10	old part number
17	0.057.1430.0	5	support
18	0.057.1453.0	5	support
19	0.057.1454.0/10	10	screw
20	0.057.1455.0/10	20	screw
21	2.0432.007.1	5	stud bolt m 8 p.1.25 / p.1 x 30
22	2.0432.011.1	5	stud bolt m 8 p.1.25 / p.1 x 40
23	2.1652.708.0	20	cylindrical plug 8x18
24	0.057.1432.3/10	10	rocker arm
25	2.1559.141.0	10	special bushing
26	2.1011.405.2	10	nut m 8 p.1
27	0.021.1434.0	10	screw
28	2.0432.009.1	9	stud bolt m 8 p.1.25 / p. 1 x 35
28	2.0432.026.1	1	stud bolt m 8 p.1.25 - 1.00 x 110

Section: ENGINE
LUBRICATION

Fig.	P/n	QTY	Name
------	-----	-----	------

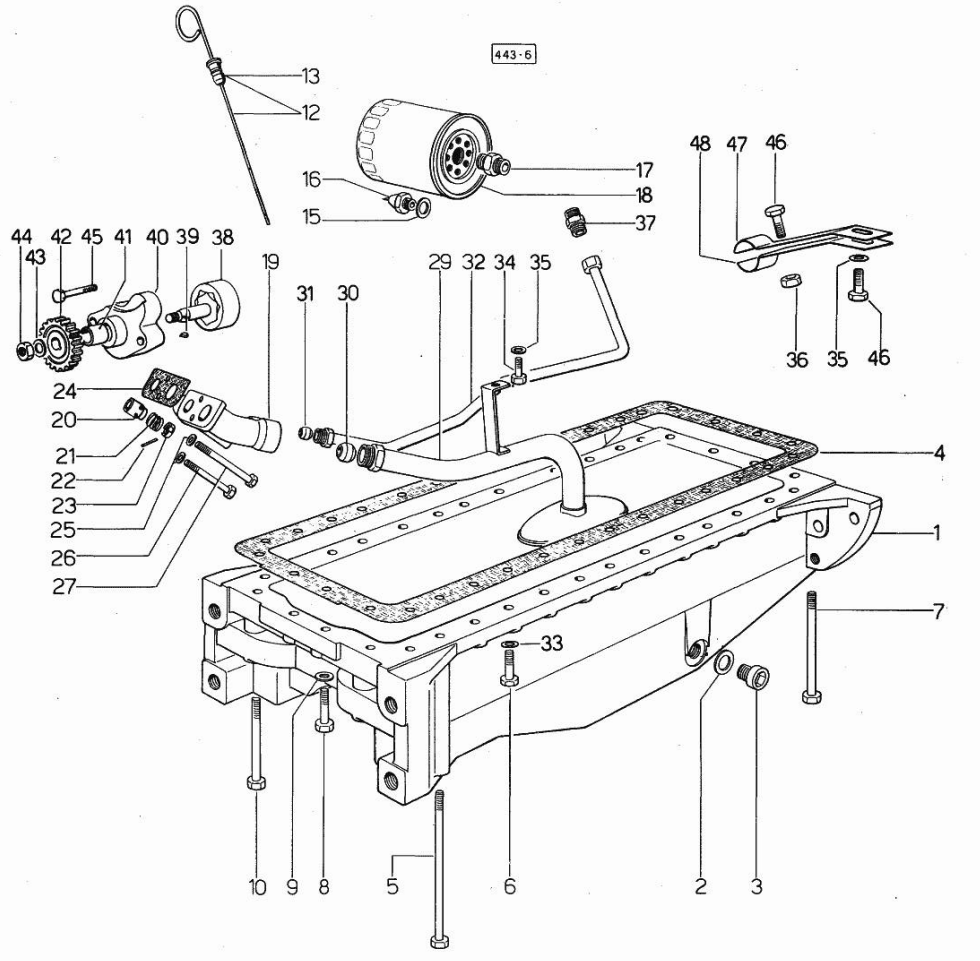
Notes:
[H-5116 T]



1	0.048.1510.0	1	oil sump
2	2.1560.054.0	1	gasket 21 x 26
3	2.3199.001.2	1	plug 1/2" gas
4	0.041.1512.0	1	gasket
5	2.0112.244.2	2	screw m 8 p.1.25 x 180
6	2.0112.215.2	24	screw m 8 p.1.25 x 40
7	2.0112.237.2	4	screw m 8 p.1.25x140
8	2.0112.217.2	2	screw m 8 p.1.25 x 45
9	2.1560.004.0	4	copper gasket 8.2 x 14
10	2.0112.231.1	2	screw m 8 p 1.25x110
12	0.057.1513.3/10	1	dipstick
13	2.1539.035.0	1	special oil seal
15	2.1560.008.0	1	gasket 12.2 x 18
16	2.7099.040.0/10	1	pressure switch
17	2.3339.094.1/10	1	pipe fitting m 20 p.1.5-3/4 gas
18	0.052.1565.0	1	oil filter element
19	0.052.1530.0	1	tip
20	0.052.1571.0	1	small piston
21	2.4019.270.1	1	spring 9.7x54x2
22	2.1630.213.0	1	roll pin 3x32
23	0.054.1558.0/10	1	stop
24	0.037.1557.0/20	1	gasket
25	2.1480.014.1	2	washer 8
26	2.0112.225.2	1	screw m 8 p.1.25 x 80
27	2.0112.231.1	1	screw m 8 p 1.25x110
29	0.048.1531.3	1	tube
30	2.3359.017.1	1	nosepiece
31	2.3359.016.1	1	nosepiece
32	0.058.1534.2/20	1	tube
33	2.1470.004.2	30	lock washer 8
34	2.0112.204.2	1	screw m 8 p.1.25x14
35	2.1310.004.2	3	flat washer 8.4x17
36	2.1011.105.2	2	nut m 8 p.1.25
37	2.3339.159.1/10	1	pipe fitting
38	0.040.1524.3/30	1	rotor
39	2.1720.005.0	1	key 4x5
40	0.047.1520.3	1	pump casing
41	2.1559.086.0/10	1	bush
42	0.040.1521.0/10	1	gear z = 27
43	2.1310.007.2	1	flat washer 13 x 24
44	2.1121.109.2	1	self-locking nut m 12 p.1.25

Section: ENGINE
LUBRICATION

Fig.	P/n	QTY	Name
45	2.0112.219.2	2	screw m 8 p.1.25x55
46	2.0112.207.2	4	screw m 8 p 1.25 x 20
47	0.046.1551.0	2	bracket
48	0.046.1550.0	2	bracket

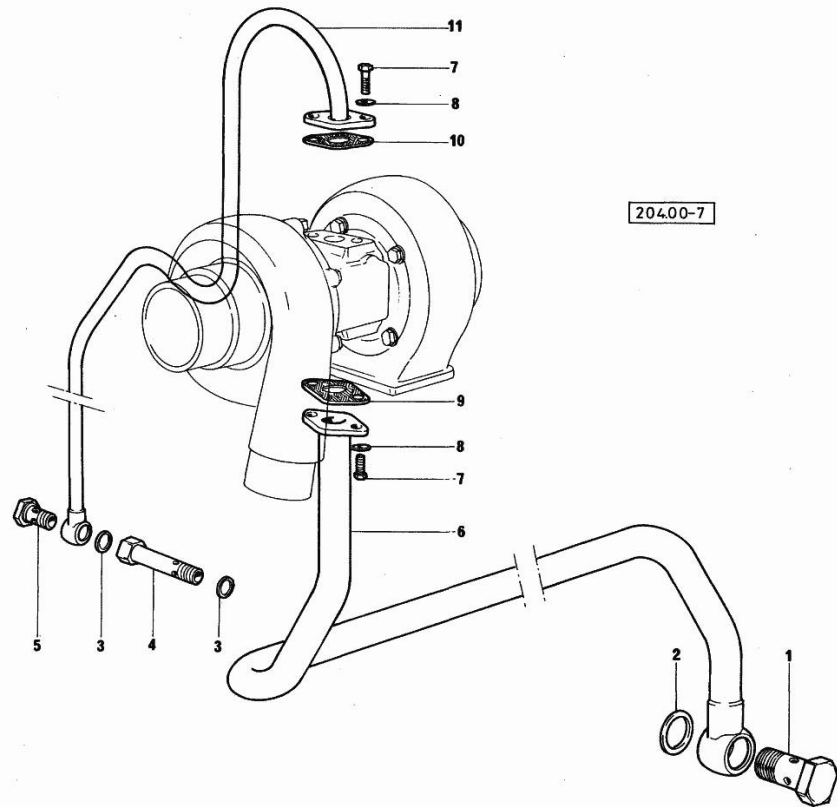


Section: ENGINE
LUBRICATION

Fig.	P/n	QTY	Name
------	-----	-----	------

Notes:
 [H-5116 T]

1	2.3332.008.1	1	old part number
2	2.1560.022.0	2	gasket
3	2.1560.008.0	3	gasket 12.2 x 18
4	0.057.1552.0	1	pipe fitting
5	2.3339.184.1	1	pipe union
6	0.059.1552.3	1	tube
7	2.0112.207.2	4	screw m 8 p 1.25 x 20
8	2.1474.009.1	4	spring washer 8
9	0.057.1558.0	1	gasket
10	0.057.1553.0	1	gasket
11	0.057.1550.3	1	tube



Section: ENGINE

FUEL FEED - GOVERNOR

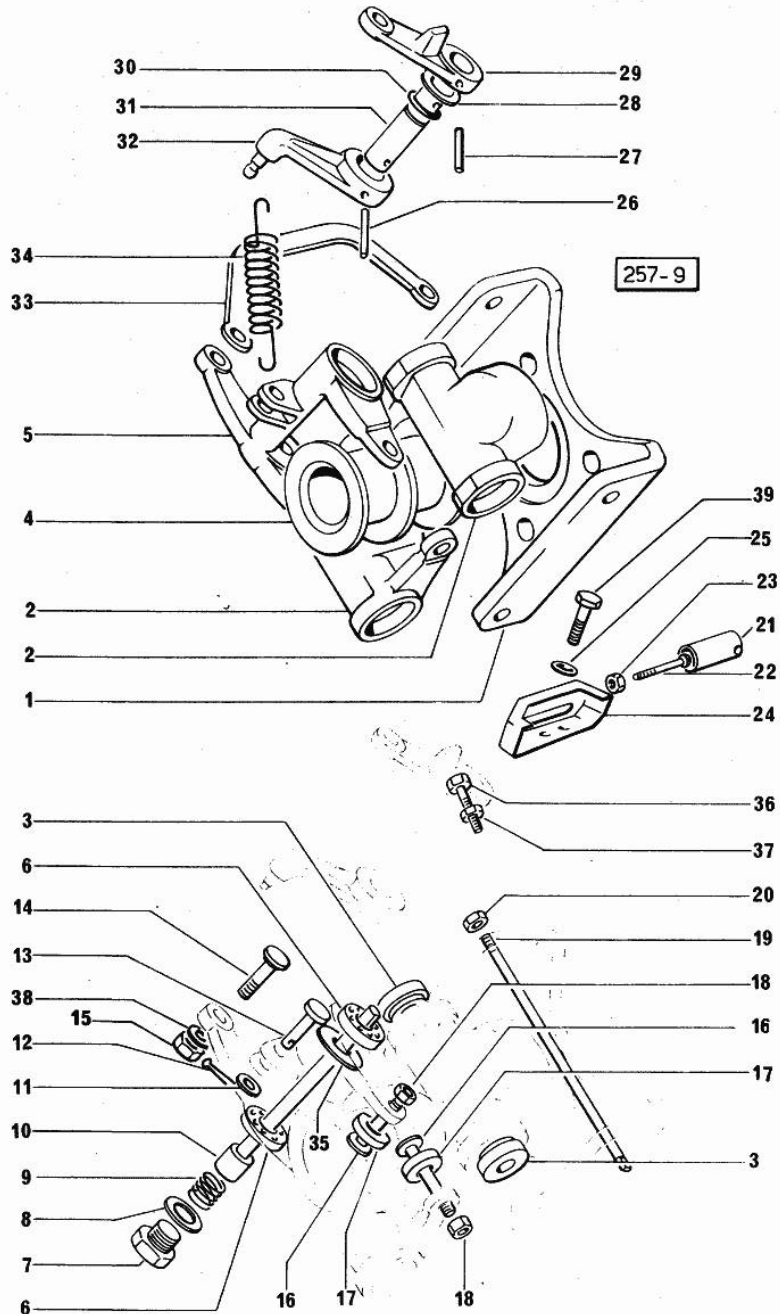


Fig.	P/n	QTY	Name
------	-----	-----	------

Notes:
[H-5116 T]

1	0.062.1615.0	1	bracket
2	0.062.1616.0	2	adjust.rocker
4	0.041.1618.0	1	sleeve
5	0.062.1619.0	1	lever
6	2.2999.158.0	2	special bearing
7	2.3110.002.1	1	plug 1/4" gas
8	2.1560.008.0	1	gasket 12.2 x 18
9	2.4019.177.1	1	spring
10	0.041.1620.0	1	pin
11	2.1310.001.2	1	flat washer 5.3 x 10
12	2.1690.104.2	1	split pin 1.6x10
13	2.1670.005.2	1	pin 5x22x20
14	0.041.1656.0	1	pin
15	2.1011.103.2	1	nut m 6 p.1
16	0.054.1654.0/10	4	pin
17	0.054.1655.0	4	roller
18	2.1019.007.1	4	special nut m 6 p.1
19	0.062.1617.0/10	2	pin
20	2.1120.305.2	2	self-locking nut m 8 p.1 x 8
21	0.024.1680.0	1	guard
22	2.0220.317.2	1	screw m 5x0.8x35
23	2.1011.102.2	1	nut m 5 p.0.7
24	0.052.1661.2/20	1	small cover
25	2.1310.002.2	2	flat washer 6.4x12.5
26	2.1630.511.0	1	roll pin 5x24
27	2.1630.410.0	1	roll pin 4 x 20
28	2.1599.141.0	1	shoulder ring 12.5x19x1.5
29	0.041.1621.0	1	lever
30	2.1530.016.0	1	oil seal 8.73 x 1.78
31	0.041.1655.0/10	1	pin
32	0.042.1621.0	1	lever
33	0.042.1622.0	1	rod
34	2.4049.095.1/10	1	spring
35	2.1599.248.1	2	shim 7x11x1
36	2.0112.009.2	1	screw m 6 p.1 x 25
37	2.1011.103.2	1	nut m 6 p.1
38	2.1481.005.1	4	washer 6, d128
39	2.0119.081.2	2	screw

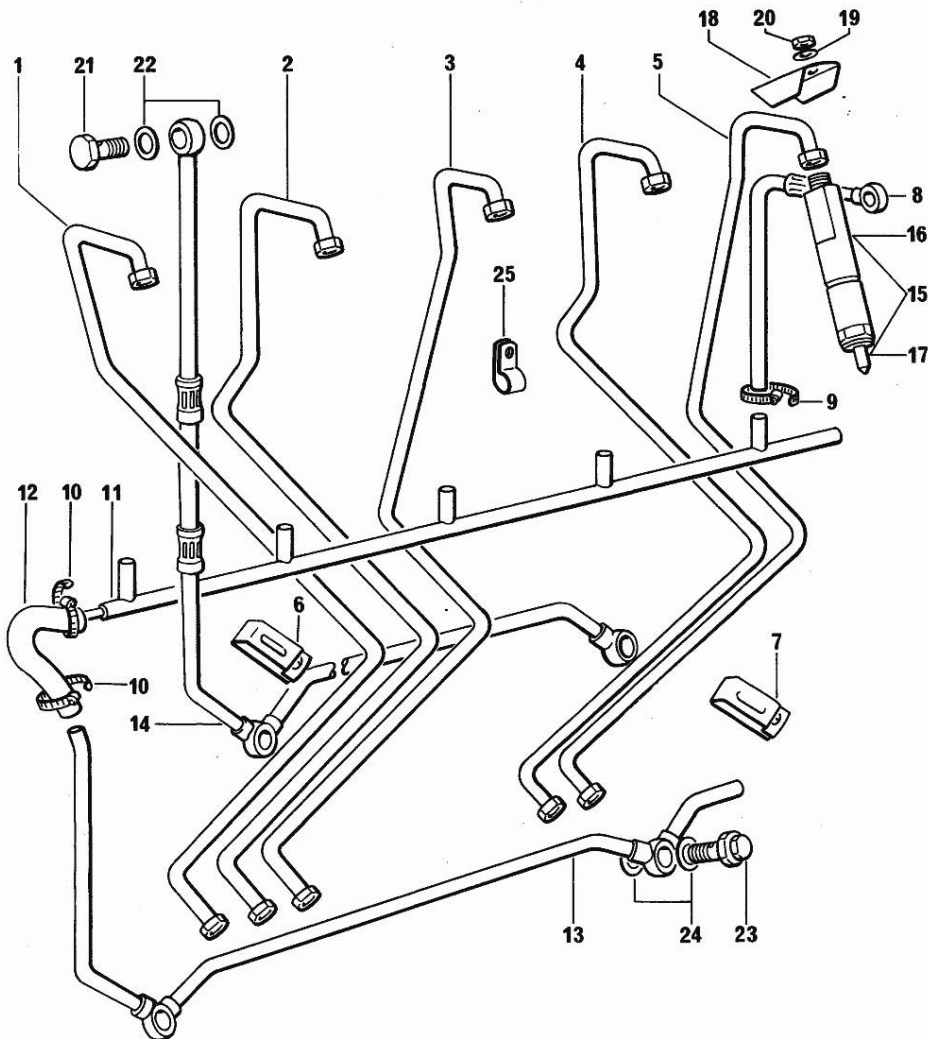
Section: ENGINE

FUEL SYSTEM - INJECTOR NOZZLE

Fig.	P/n	QTY	Name
------	-----	-----	------

Notes:
[H-5116 T]

1	0.057.1630.2	1	tube
2	0.057.1631.2	1	tube
3	0.057.1632.2	1	tube
4	0.057.1633.2	1	tube
5	0.057.1634.2	1	tube
6	0.057.1655.3	2	clamp
7	0.059.1651.3	2	bracket
8	0.057.1651.2/20	5	tube
9	2.6859.029.2	5	clamp
10	2.6850.001.0	2	clamp
11	0.058.1654.2	1	tube
11	2.4729.080.0	1	nozzle
12	0.057.1653.0/10	1	tube
13	0.058.1642.2	1	tube
14	0.058.1646.2	1	tube
15	2.4719.140.0	5	injector assembly
16	2.4719.150.0	5	nozzle holder
17	2.4729.080.0	5	nozzle
18	0.057.1652.0	5	bracket
19	2.1470.004.2	10	lock washer 8
20	2.1011.405.2	10	nut m 8 p.1
21	2.3332.004.1	1	pipe union m 14 p.1.5
22	2.1560.009.0	2	gasket 14.2x18
23	0.045.1651.4	2	valve
24	2.1560.007.0	4	gasket 12.2x16
25	2.6839.037.2	2	clamp Ø 8



443-9

Section: ENGINE

FUEL FEED - INJECTION PUMP

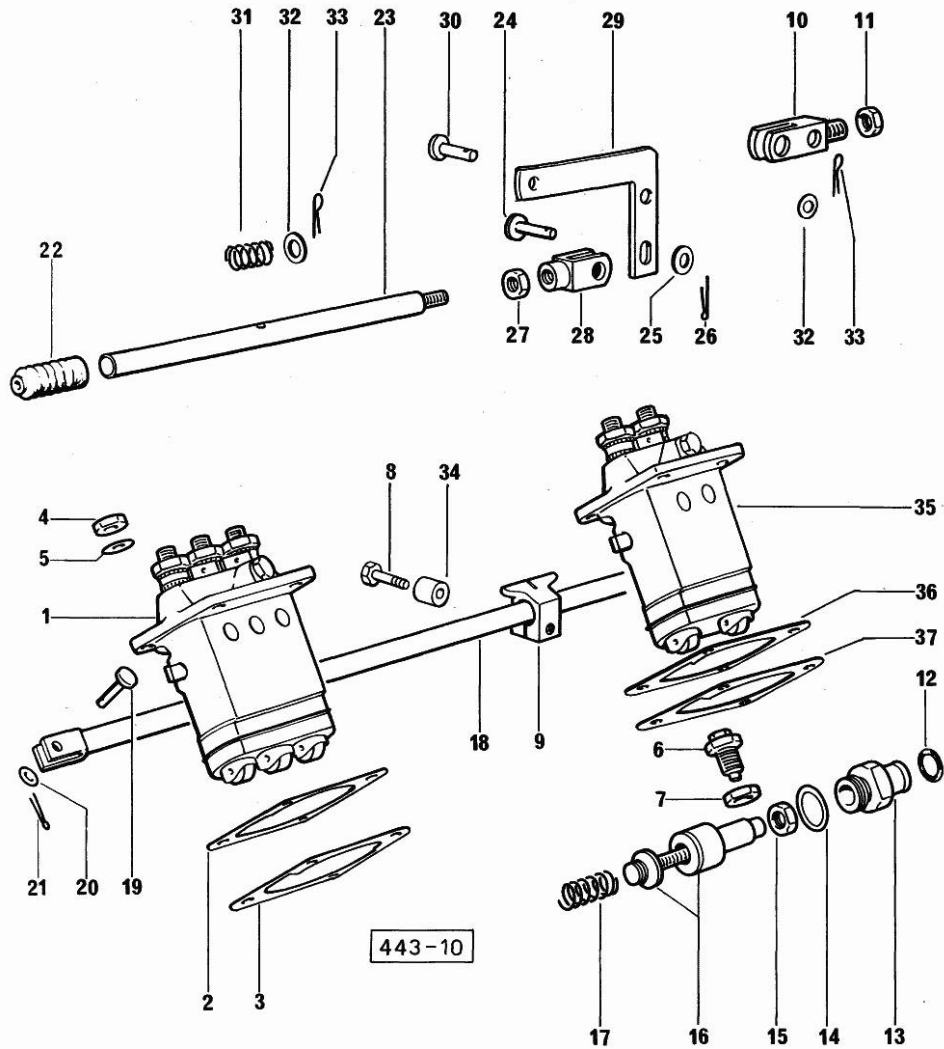


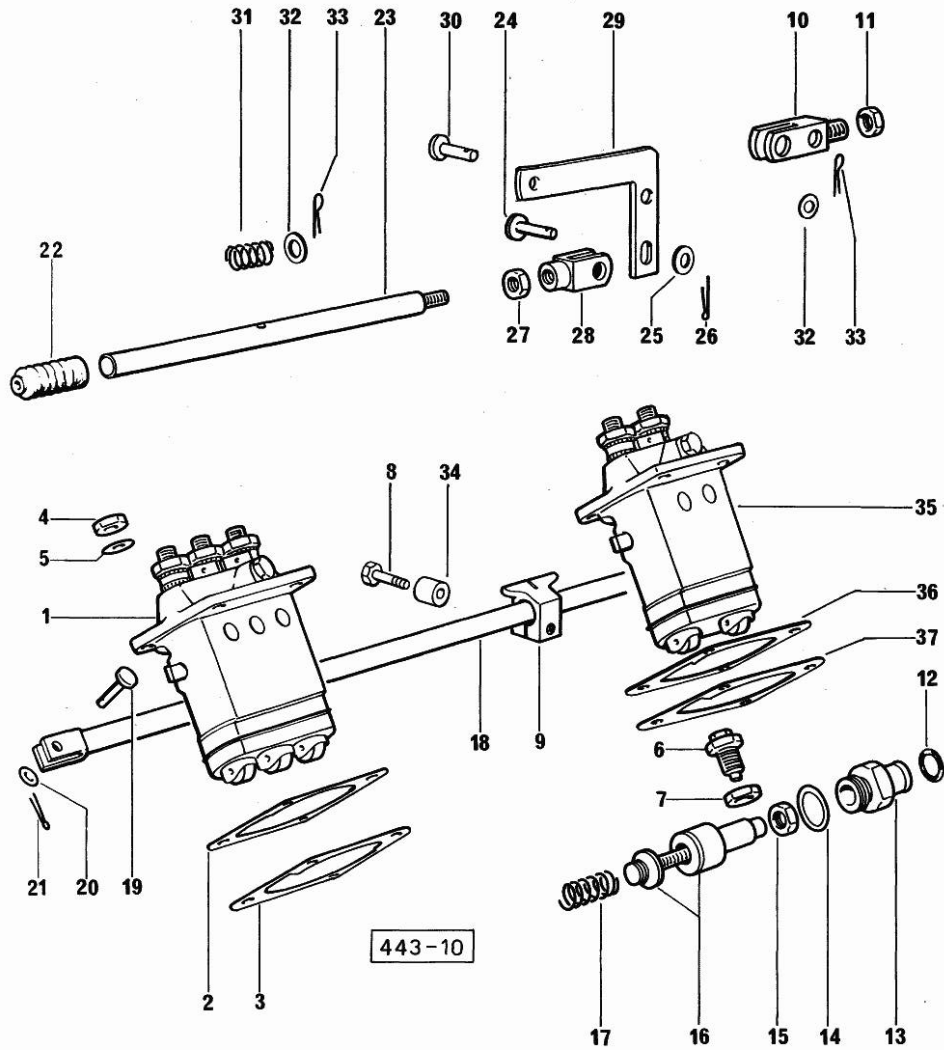
Fig.	P/n	QTY	Name
------	-----	-----	------

Notes:
[H-5116 T]

1	2.4639.100.0/10	1	injector pump ☞ 2.4639.100.0/10 ☞ 01.00.13
2	0.041.1658.0	3	shim mm 0.20
2	0.041.1659.0	1	shim mm 0.1
3	0.041.1694.0	2	gasket mm 0.1
3	0.041.1695.0	3	gasket mm 0.20
4	2.1099.056.1	8	special nut m8 p.1
5	2.1311.006.2	8	flat washer 8
6	0.057.1657.3	1	adapter
7	2.1099.066.1	1	special nut
8	2.0112.007.2	1	screw m 6 p.1 x 20
8	2.0112.013.2	1	screw m 6 p.1 x 35
9	0.057.1650.0	2	bracket
10	0.044.1656.0	1	support
11	2.1011.506.2	1	nut m 10 p.1
12	2.1530.015.0	1	oil seal 8.30x2.40
13	0.041.1666.0/40	1	plug
14	2.1560.019.0	1	copper gasket 24.3x30
15	2.1011.505.2	1	nut m 8 p.1
16	0.062.1652.6	1	adapter
17	2.4019.178.1/10	1	spring 14.6x34x0.8
18	0.041.1613.2	1	rod
19	2.1679.048.2	1	pin
20	2.1311.004.1	1	flat washer 6
21	2.1690.205.0	1	split pin A2x12
22	0.000.5617.0	1	guard
23	0.054.1675.0/10	1	ferrule
24	2.1679.048.2	1	pin
25	2.1310.002.2	1	flat washer 6.4x12.5
26	2.1690.205.0	1	split pin A2x12
27	2.1011.103.2	1	nut m 6 p.1
28	2.3510.003.2	1	fork m 6
29	0.054.1674.0	1	lever
30	2.1670.303.2	1	pin 8x18x15
31	2.4019.232.1	1	spring
32	2.1310.004.2	2	flat washer 8.4x17
33	2.1690.206.0	2	split pin
34	2.1579.455.1	1	spacer 6.2x12x14
35	2.4629.170.0/10	1	injector pump
36	0.058.1650.0	2	shim mm 0.1

FUEL FEED - INJECTION PUMP

Fig.	P/n	QTY	Name
36	0.058.1653.0	5	shim mm 0.20
37	0.058.1651.0	3	shim mm 0.20
37	0.058.1652.0	1	shim mm 0.1



Section: ENGINE

FUEL SUPPLY SYSTEM

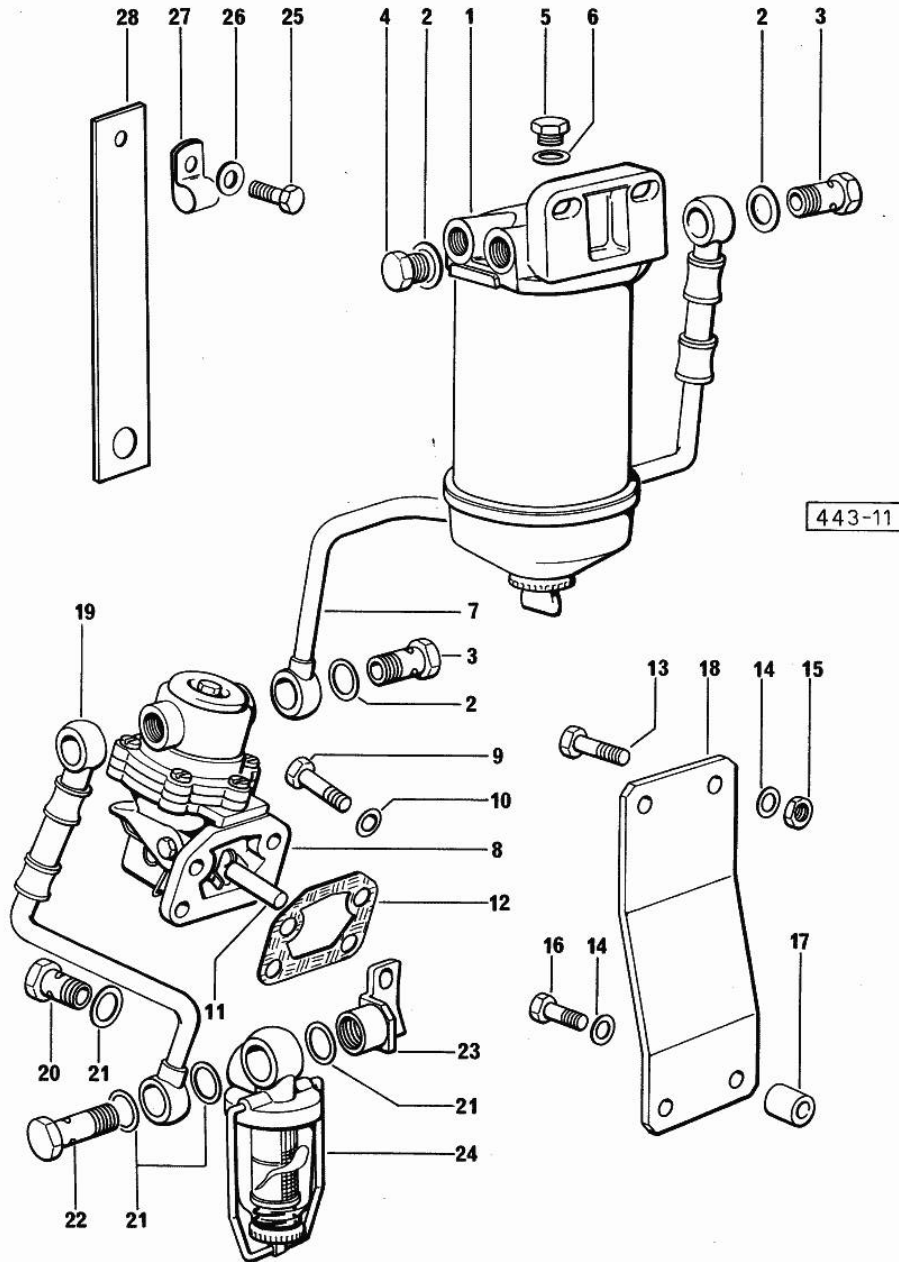


Fig.	P/n	QTY	Name
Notes:			
[H-5116 T]			
1	2.4319.130.0	1	fuel filter ☞ 2.4319.130.0 ☞ 01.00.14
2	2.1560.009.0	8	gasket 14.2x18
3	2.3332.004.1	3	pipe union m 14 p.1.5
4	2.3110.403.1	2	plug m 14 p.1.5x12
5	2.3119.005.2	1	plug m 10 p.1.5
6	2.1560.005.0	1	copper gasket 10.2 x 14
7	0.057.1645.2/10	1	tube
8	2.4519.230.0/10	1	feed pump ☞ 2.4519.230.0/10 ☞ 01.00.16
9	2.0112.209.2	4	screw m 8 p 1.25 x 25
10	2.1480.014.1	4	washer 8
11	0.044.1655.0/20	1	ferrule
12	0.056.1651.0	1	gasket
13	2.0112.311.2	2	screw m 10 p.1.5 x 30
14	2.1470.006.2	4	lock washer 10
15	2.1011.106.2	2	nut m 10 p.1.5
16	2.0112.315.2	2	screw m 10 p.1.5 x 40
17	2.1579.149.2	2	spacer 11x18x19
18	0.057.1654.2	1	support
19	0.064.1654.3	1	tube
20	2.3332.004.1	1	pipe union m 14 p.1.5
21	2.1560.009.0	5	gasket 14.2x18
22	2.3339.040.2	1	pipe union m 14 p.1.5x45
23	0.071.1655.2	1	support
24	2.4319.220.0	1	precleaner ☞ 2.4319.220.0 ☞ 01.00.15
25	2.0220.307.1	1	screw
26	2.1470.001.2	1	lock washer 5
27	2.6830.005.1	1	bracket
28	0.101.1948.0	1	support

Thank you so much for reading.
Please click the “Buy Now!”
button below to download the
complete manual.



After you pay.

You can download the most
perfect and complete manual in
the world immediately.

Our support email:

ebooklibonline@outlook.com