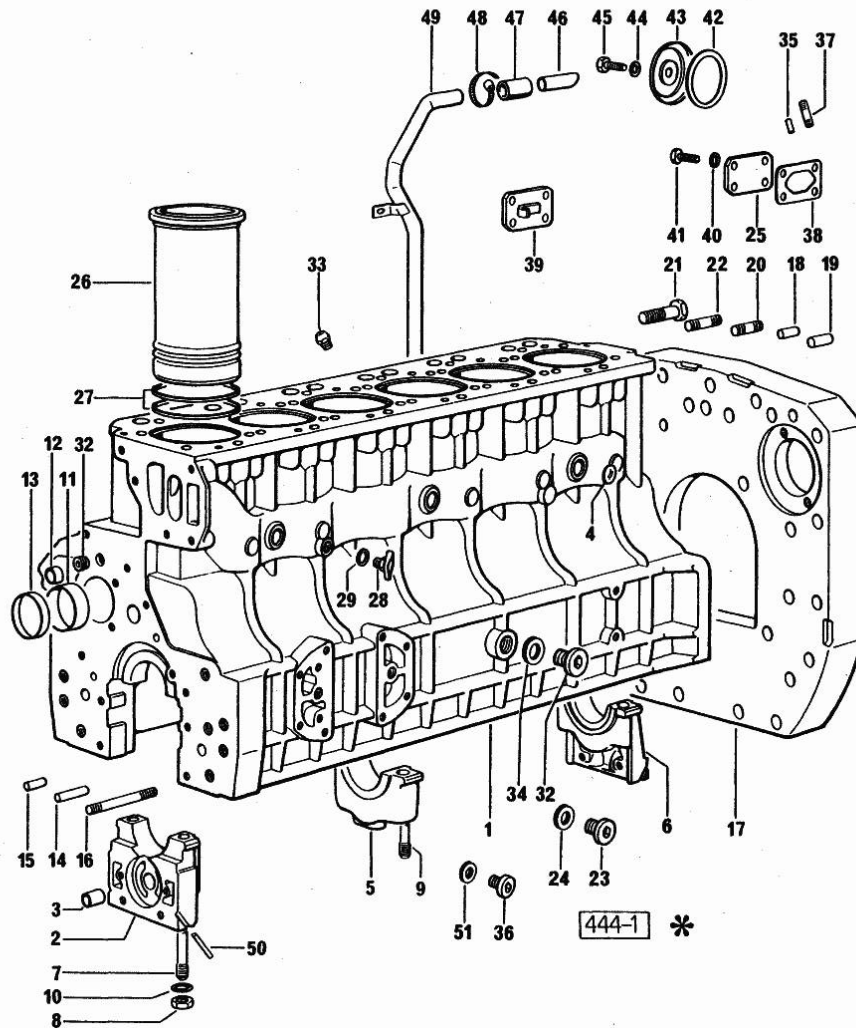


Section: ENGINE
CRANKCASE

Fig.	P/n	QTY	Name
------	-----	-----	------

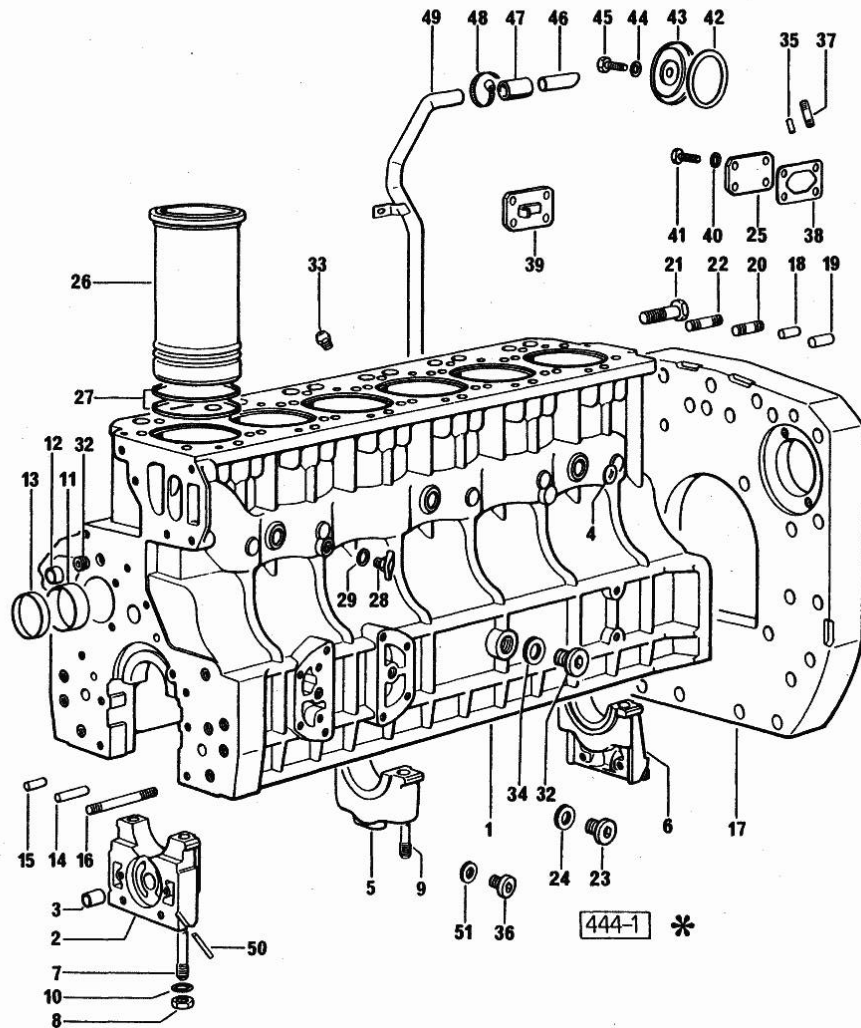
Notes:
[H-6136]



0	0.057.0050.6	1	gasket set FOR ENGINE ASSEMBLY
1	0.061.1110.4/70	1	crankcase (..) <= ORDER ALSO N.1 045.1240.0 N.2 2.0112.309.2 N.9 2.1474.010.2
2	0.003.8318.0	1	support
3	2.1559.090.0/10	1	bushing 14.24x19.06x27
4	2.3170.012.1	5	expansion plug 30
5	0.052.1113.0	5	support
6	0.052.1116.0	1	support
7	0.052.1151.0	4	stud bolt
8	2.1099.064.7	14	special nut
9	0.052.1150.0	10	stud bolt
10	2.1599.318.7	14	flat washer
11	2.1559.156.0	4	special bushing
12	2.1559.111.0/10	2	special bushing 11.5x14.1x10
13	2.1559.157.0	1	special bushing
14	2.1699.114.0	1	pin 8x55
15	2.1653.711.0	1	pin
16	2.0432.025.1	2	stud bolt m 8 p 1.25-1x100
17	0.071.1150.0	1	flange
18	2.1653.708.0	2	pin 8x18 (...)<=
19	2.1652.911.0	2	cylindrical plug 12x25
20	2.0432.153.1	2	stud bolt m 10 p.1.5 / p.1.25 x 20
21	2.0112.513.1	10	screw m 14 p.2 x 35
22	2.0432.257.1	2	stud bolt m 12 p.1.75 - 1.25 x 30
23	2.3120.002.4	3	plug m 22 x 1.5
24	2.1560.017.0	3	gasket 22.2 x 27
25	0.057.1152.0/10	1	cover
26	0.057.1120.0	6	engine cylinder
27	2.1539.029.0	12	special oil seal
28	0.049.1152.0	1	cock
29	2.1560.009.0	1	gasket 14.2x18
32	2.3120.003.4	1	plug m 28 p.1.5
33	0.071.1151.3	6	valve
34	2.1560.022.0	1	gasket
35	2.1652.306.0	2	cylindrical plug 4x14
36	2.3120.001.4	2	plug m 18 p.1.5

Section: ENGINE
CRANKCASE

Fig.	P/n	QTY	Name
37	2.0432.003.1	8	stud bolt m 8 p.1.25 / p.1 x 20
38	0.057.1153.0	2	gasket
39	0.057.1162.3/20	1	cover
40	2.1310.004.2	8	flat washer 8.4x17
41	2.0112.205.2	6	screw m 8 p.1.25 x 16
41	2.0112.209.2	2	screw m 8 p 1.25 x 25
42	0.057.1151.0	1	gasket
43	0.057.1150.0	1	cover
44	2.1560.003.0	1	copper gasket 8.2 x 12
45	2.0112.204.2	1	screw m 8 p.1.25x14
46	0.057.1154.0	1	tube
47	0.057.1158.0	1	sleeve
48	2.6850.007.0	1	clamp 25-40
49	0.079.1150.2/20	1	tube
50	0.029.1154.0/10	4	gasket
51	2.1560.014.0	2	washer 18.2 x 24



Section: ENGINE
TIMING CASE

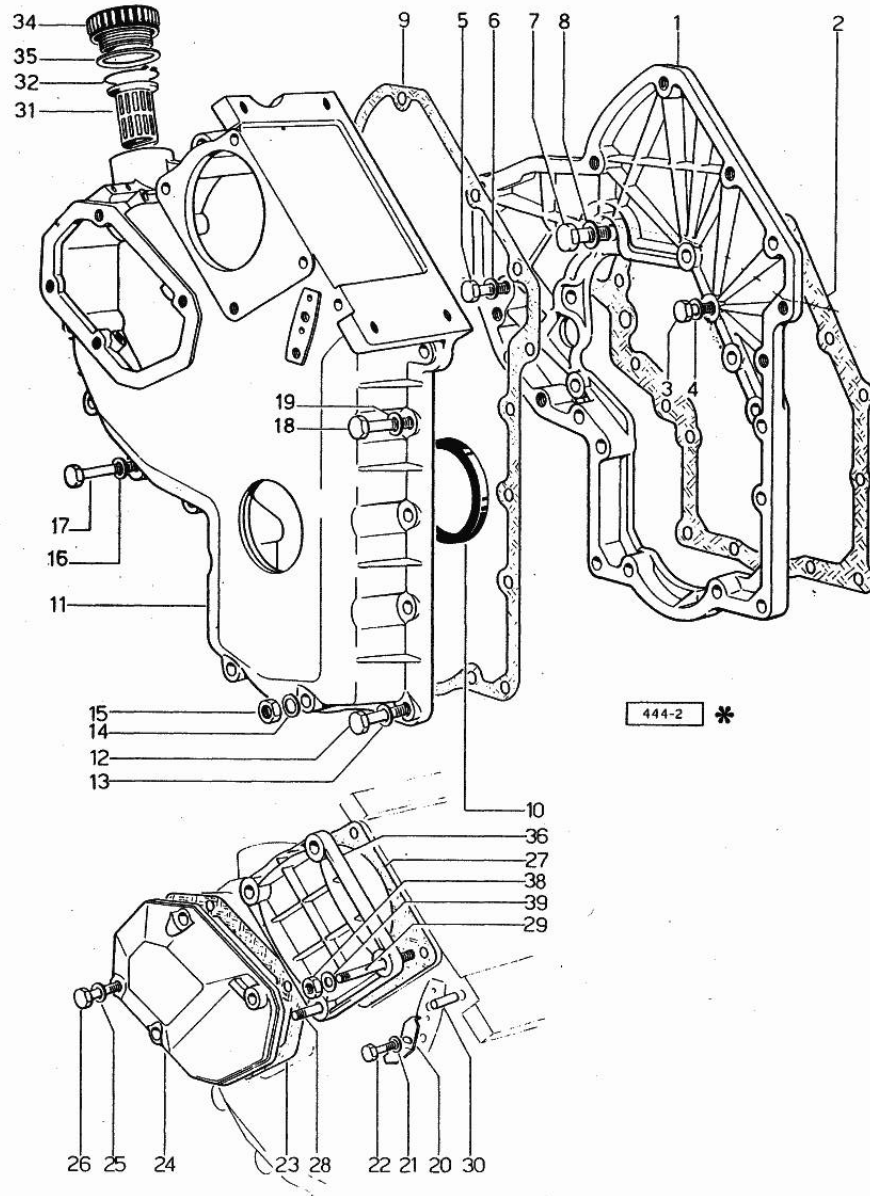


Fig.	P/n	QTY	Name
------	-----	-----	------

Notes:
[H-6136]

1	0.079.1131.0	1	flange
2	0.057.1155.0	1	gasket
3	2.0112.209.2	2	screw m 8 p 1.25 x 25
4	2.1480.014.1	4	washer 8
5	2.0112.207.2	3	screw m 8 p 1.25 x 20
6	2.1474.009.1	1	spring washer 8
6	2.1480.014.1	2	washer 8
7	2.0112.211.2	1	screw m 8 p.1.25 x 30
8	2.1480.014.1	1	washer 8
9	0.041.1152.0	1	gasket
10	2.1519.010.0	1	special oil seal 58x80x10
11	0.048.1132.0/30	1	guard
12	2.0112.217.2	5	screw m 8 p.1.25 x 45
13	2.1480.014.1	5	washer 8
14	2.1560.003.0	2	copper gasket 8.2 x 12
15	2.1011.405.2	2	nut m 8 p.1
16	2.1480.014.1	3	washer 8
17	2.0112.211.2	3	screw m 8 p.1.25 x 30
18	2.0112.222.2	4	screw m 8 p.1.25x65
19	2.1480.014.1	4	washer 8
20	0.057.1156.0	1	index
21	2.1310.004.2	1	flat washer 8.4x17
22	2.0112.204.2	1	screw m 8 p.1.25x14
23	0.048.1151.0/10	1	gasket
24	0.048.1150.0/20	1	cover
25	2.1560.005.0	4	copper gasket 10.2 x 14
26	2.0112.315.2	4	screw m 10 p.1.5 x 40
27	0.041.1154.0	1	gasket
28	2.0432.013.1	1	stud bolt m 8 p.1.25 / p.1 x 45
29	2.0432.028.1	3	stud bolt m 8 p.1.25-1x130
30	2.1653.717.0	1	pin 8 x 40
31	0.041.1159.0/10	1	filter
32	2.1411.012.1	1	circlip 30
34	0.041.1135.4	1	plug 1" gas
35	2.1569.072.0	1	gasket 32 x 39.5 x 2
36	0.037.1151.0/10	1	cover
38	2.1011.405.2	4	nut m 8 p.1
39	2.1310.004.2	4	flat washer 8.4x17

Section: ENGINE
CRANKSHAFT

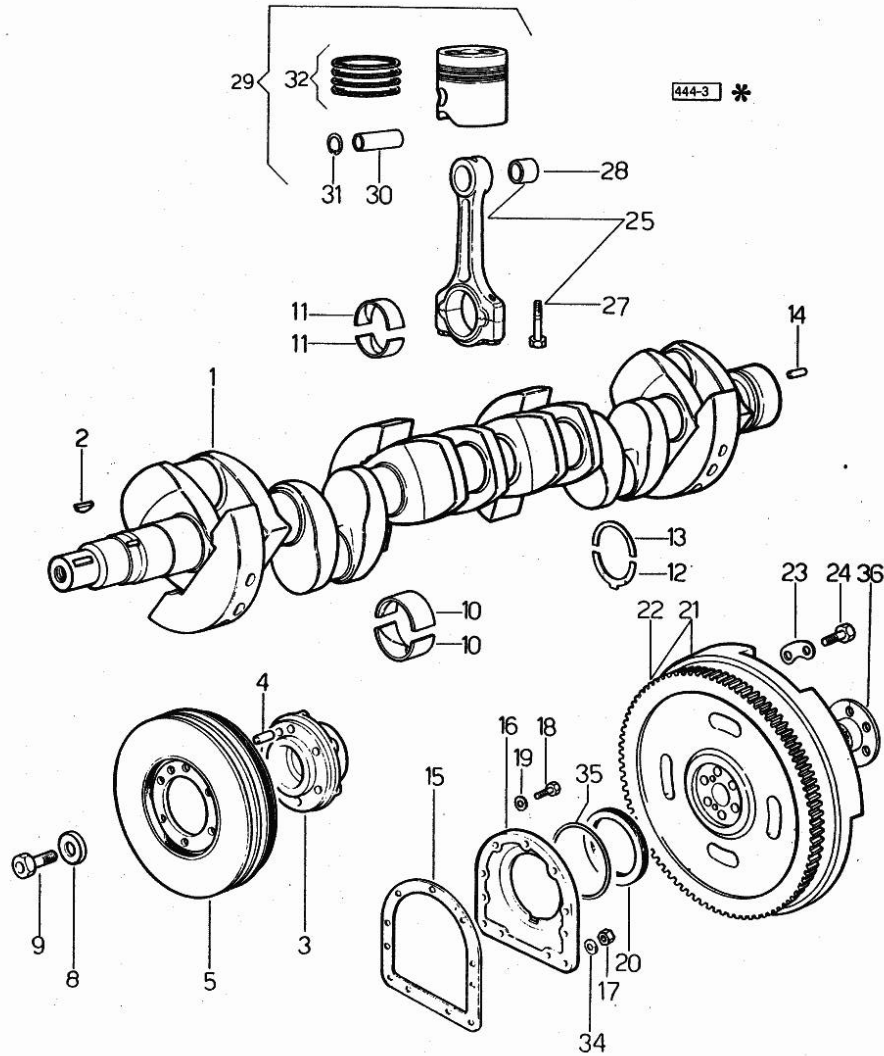


Fig.	P/n	QTY	Name
Notes: [H-6136]			
1	0.037.1210.4/30	1	crankshaft (...)<= ORDER ALSO N.1 2.1799.026.0
2	2.1799.002.0	1	stick 10x13 (...)<=
2	2.1799.026.0	1	key 10x10 => (...)
3	0.037.1250.0/10	1	hub
4	2.1651.909.0	1	cylindrical plug 12 x 20
5	0.047.1246.3	1	antivibration pulley
8	0.001.6020.0	1	shoulder
9	2.0129.032.2	1	screw m 24 p.2x45
10	0.029.1215.0/10	14	main half bushing
10	0.029.1215.7	14	main half bushing - mm 0.25
10	0.029.1215.8	14	main half bushing - mm 0.50
10	0.029.1215.9	14	main half bushing - mm 0.75
11	0.052.1225.0	12	con.rod half bushing
11	0.052.1225.7		con.rod half bushing - mm 0.25
11	0.052.1225.8		con.rod half bushing - mm 0.50
11	0.052.1225.9		con.rod half bushing - mm 0.75
12	0.001.4547.0		shoulder ring + mm 0.05
12	0.001.4548.0		shoulder ring + mm 0.10
12	0.001.4549.0		shoulder ring + mm 0.15
12	0.042.1219.0	2	shoulder ring STANDARD
13	0.001.4544.0		shoulder ring + mm 0.05
13	0.001.4545.0		shoulder ring + mm 0.10
13	0.001.4546.0		shoulder ring + mm 0.15
13	0.042.1218.0	2	shoulder ring STANDARD
14	2.1652.915.0	2	cylindrical plug 12x35
15	0.029.1250.0/10	1	gasket
16	0.045.1240.0	1	flange => (...)
16	029.1240.0/10	1	- (...)<=
17	2.1011.321.2	2	nut m 10 p.1.25
18	2.0112.309.2	7	screw m 10 p.1.5 x 25 (...)<=
19	2.1474.010.2	9	washer 10 => (...)
19	2.1480.015.1	7	washer 10 (...)<=

Section: ENGINE
CRANKSHAFT

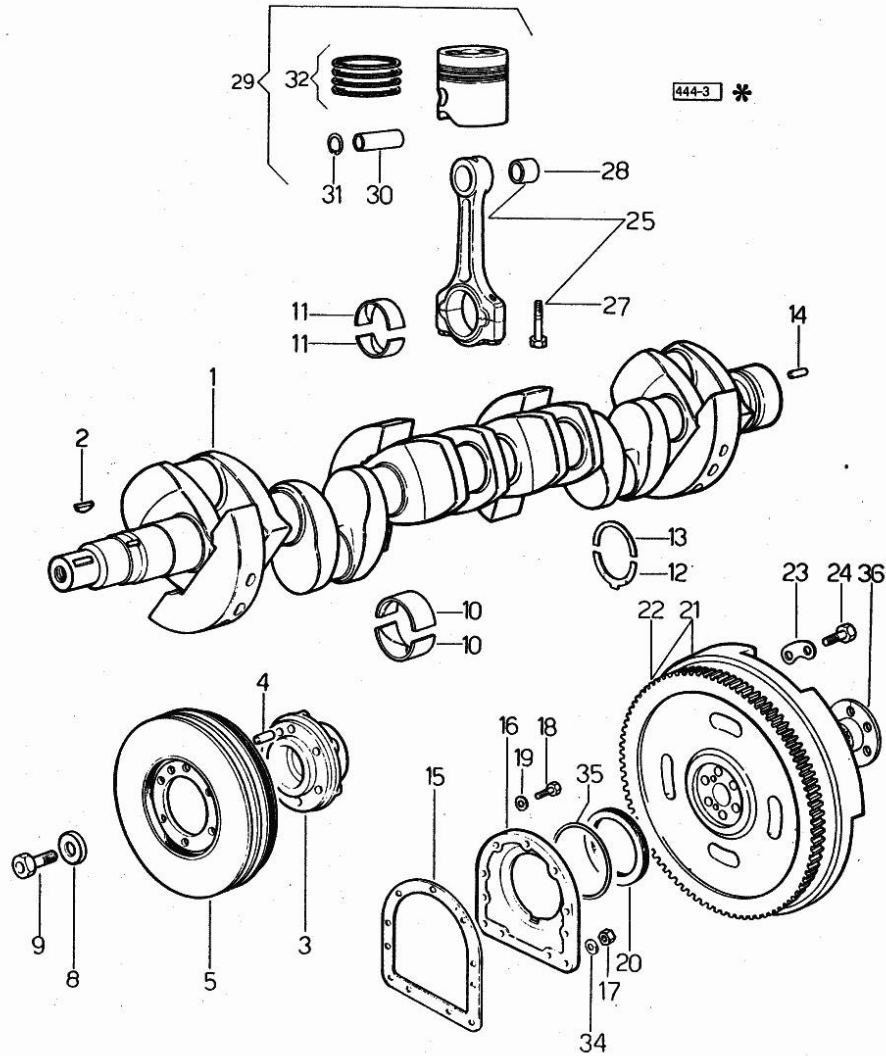


Fig.	P/n	QTY	Name
20	2.1519.009.0/10	1	special oil seal
21	0.046.1256.3	1	flywheel
22	0.047.1242.0	1	crown wheel z=128
23	2.1379.006.0	3	lock-tab 15x15x36,5
24	2.0122.517.7	6	screw m 14 p.1.5x45
25	0.057.1220.3/10	6	engine connecting rod
27	0.039.1250.0	12	screw m 14 p.1.5x63
28	2.1559.114.0/10	6	special bushing
29	0.058.0060.6	6	complete piston STANDARD
30	0.054.1236.0	6	piston pin
31	2.1411.014.1	12	circlip 35
32	0.057.0051.6	6	piston ring set
34	2.1560.006.0	2	gasket 10.2 x 16
35	2.1599.404.0	1	shoulder ring
36	0.170.3650.0	1	flange

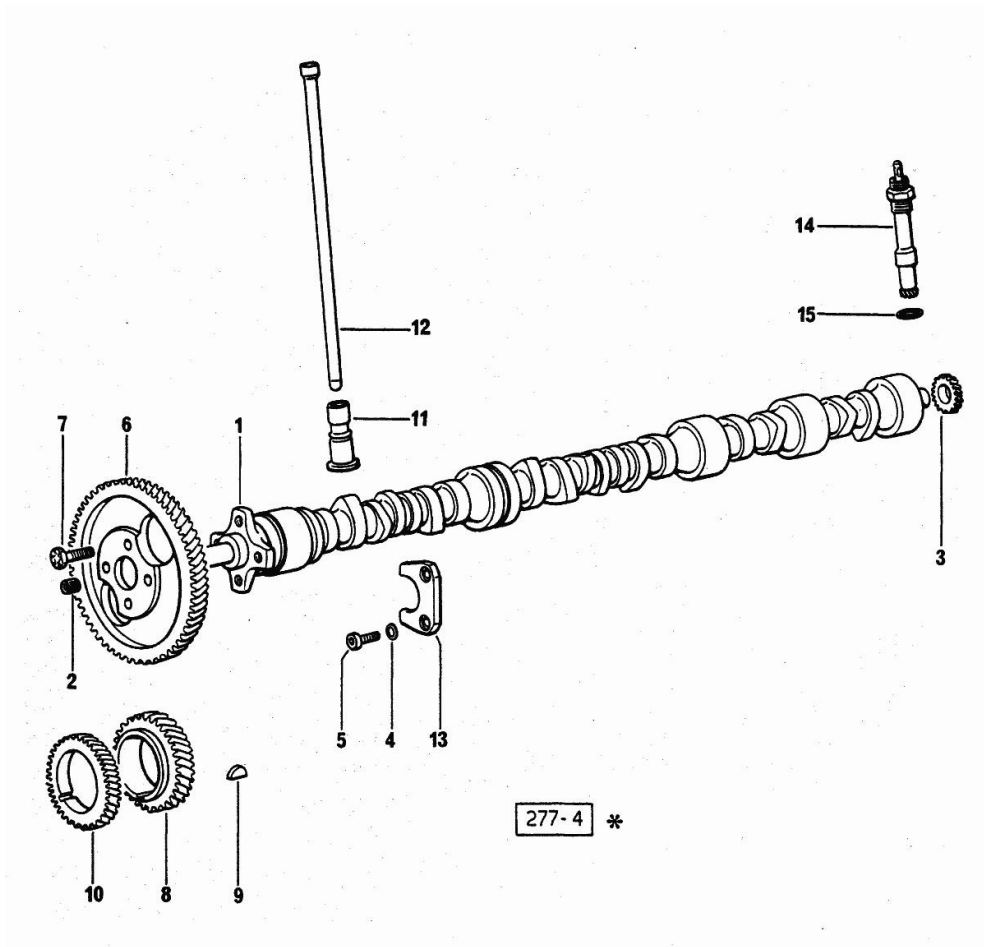
Section: ENGINE

CAMSHAFT

Fig.	P/n	QTY	Name
------	-----	-----	------

Notes:
[H-6136]

1	0.057.1310.3/20	1	-
2	2.3130.001.1	1	plug 1/8" gas
3	0.041.1350.0	1	gear
4	2.1470.004.2	2	lock washer 8
5	2.0312.206.2	2	screw m 8 p 1.25 x 20
6	0.062.1321.0	1	gear z=66
7	2.0139.005.1	4	screw m 10 p.1 x 25
8	0.040.1320.0	1	gear z = 33
9	2.1720.010.0	1	key 5x9
10	0.040.1323.0/10	1	gear Z = 38
11	0.057.1330.0/10	12	tappets
12	0.057.1331.2	12	rod
13	0.057.1314.0/20	1	plate
14	0.041.1355.3	1	transmission
15	2.1560.013.0	1	gasket 18.2x22



Section: ENGINE
CYLINDER HEAD

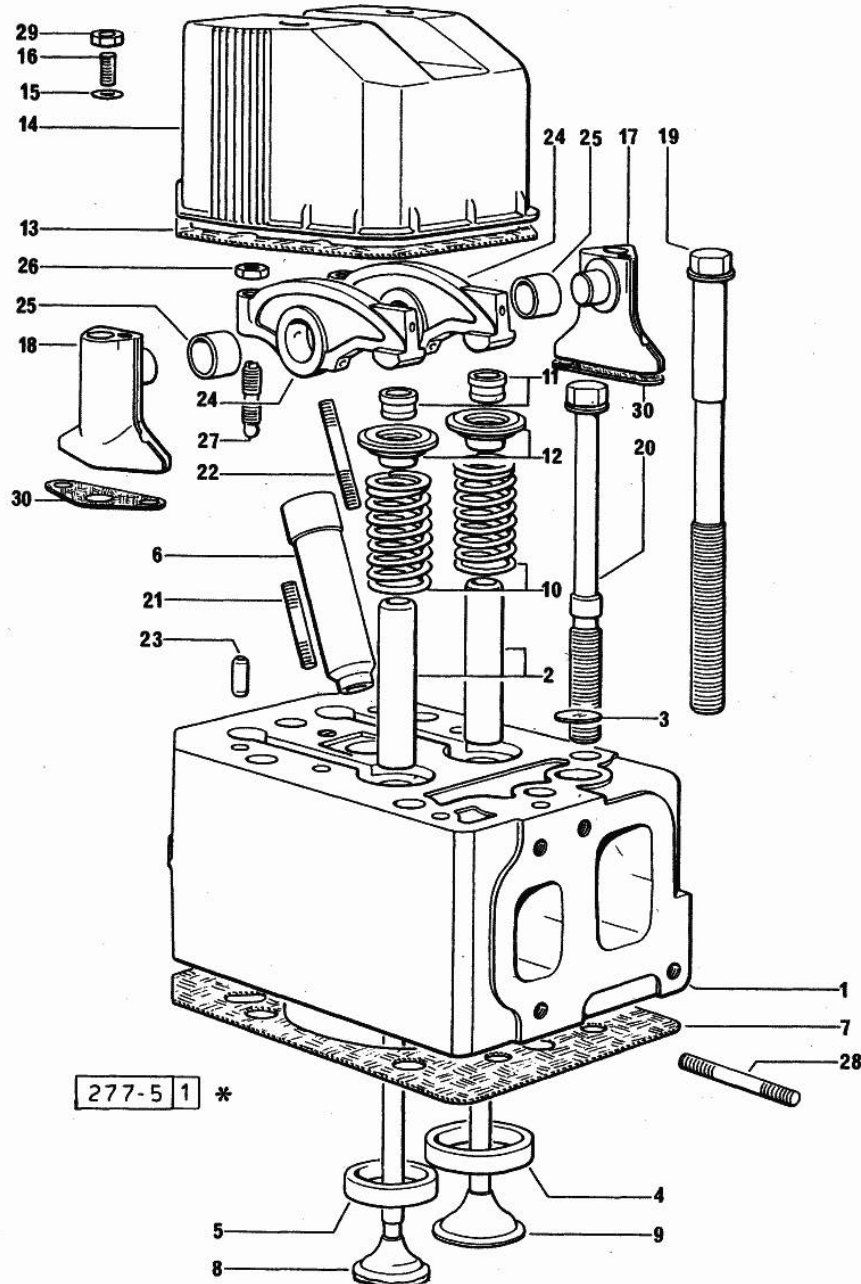


Fig.	P/n	QTY	Name
Notes:			
[H-6136]			
0	0.057.0057.6	6	gasket set FOR GRINDING VALVES OF ONE CYLINDER AND PISTON RING RENEWAL
1	0.057.1410.3/70	6	engine head
2	0.057.1416.0	12	valve guide
3	2.3170.010.1	1	expansion plug 25
4	0.057.1450.0/10	6	valve seat
5	0.057.1451.0	6	valve seat
6	0.057.1452.0/10	6	bush
7	0.057.1456.0/20	6	gasket
8	0.058.1421.0/10	6	exhaust valve
9	0.058.1420.0/10	6	inlet valve
10	2.4019.228.0	12	spring
11	0.058.1423.0	12	cone
12	0.058.1425.0/10	12	cup
13	0.057.1457.0/10	6	gasket
14	0.057.1440.0/10	6	small cap
15	2.1560.004.0	12	copper gasket 8.2 x 14
16	2.0439.087.1/20	12	stud bolt m 8 p.1.25 / p.1 x 40
17	0.057.1430.0/20	6	support
18	0.057.1453.0/20	6	support
19	0.057.1454.0/10	12	screw
20	0.057.1455.0/10	24	screw
21	2.0432.007.1	6	stud bolt m 8 p.1.25 / p.1 x 30
22	2.0432.011.1	6	stud bolt m 8 p.1.25 / p.1 x 40
23	2.1652.708.0	24	cylindrical plug 8x18
24	0.057.1432.3/10	12	rocker arm
25	2.1559.141.0	12	special bushing
26	2.1011.405.2	12	nut m 8 p.1
27	0.021.1434.0	12	screw
28	2.0432.009.1	12	stud bolt m 8 p.1.25 / p.1 x 35
29	2.1099.056.2	12	special nut m 8 p.1 x 8
30	0.064.1450.0	12	gasket

Section: ENGINE
LUBRICATION

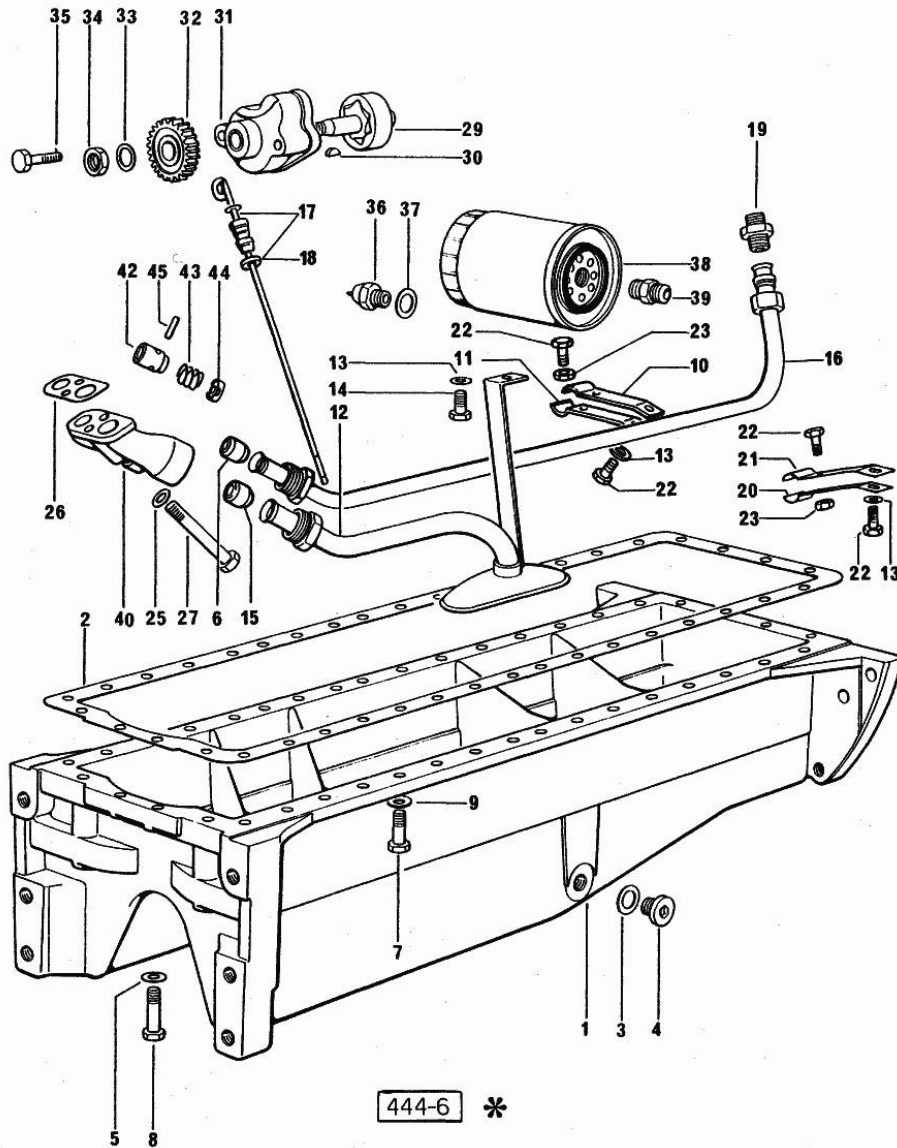


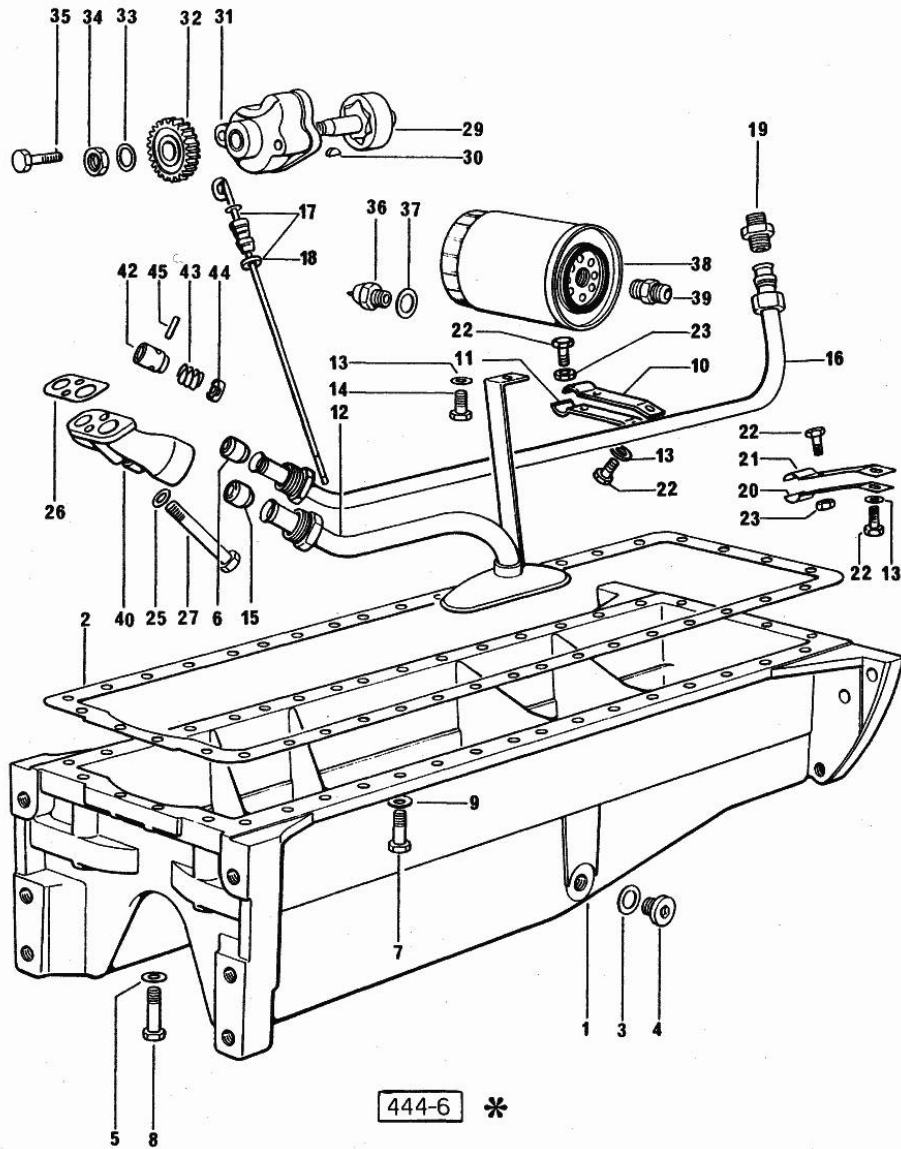
Fig.	P/n	QTY	Name
------	-----	-----	------

Notes:
[H-6136]

1	0.047.1510.0	1	oil sump
2	0.037.1512.0	1	gasket
3	2.1560.054.0	1	gasket 21 x 26
4	2.3199.001.2	1	plug 1/2" gas
5	2.1560.004.0	4	copper gasket 8.2 x 14
6	2.3359.016.1	1	nosepiece
7	2.0112.215.2	30	screw m 8 p.1.25 x 40
7	2.0112.231.1	2	screw m 8 p 1.25x110
7	2.0112.237.2	4	screw m 8 p.1.25x140
7	2.0112.244.2	2	screw m 8 p.1.25 x 180
8	2.0112.217.2	2	screw m 8 p.1.25 x 45
9	2.1470.004.2	36	lock washer 8
10	0.057.1559.0/10	1	bracket
11	0.057.1560.0/10	1	bracket
12	0.046.1531.3	1	tube
13	2.1310.004.2	4	flat washer 8.4x17
14	2.0112.204.2	1	screw m 8 p.1.25x14
15	2.3359.017.1	1	nosepiece
16	0.057.1534.2	1	tube
17	0.057.1513.3/10	1	dipstick
18	2.1539.035.0	1	special oil seal
19	2.3339.159.1/10	1	pipe fitting
20	0.057.1564.0	2	bracket
21	0.057.1563.0	2	bracket
22	2.0112.207.2	6	screw m 8 p 1.25 x 20
23	2.1011.105.2	3	nut m 8 p.1.25
25	2.1480.014.1	2	washer 8
26	0.037.1557.0/20	1	gasket
27	2.0112.225.2	1	screw m 8 p.1.25 x 80
27	2.0112.231.1	1	screw m 8 p 1.25x110
29	0.040.1524.3/30	1	rotor
30	2.1720.005.0	1	key 4x5
31	0.047.1520.3/10	1	pump casing
32	0.040.1521.0/10	1	gear z = 27
33	2.1310.007.2	1	flat washer 13 x 24
34	2.1121.109.2	1	self-locking nut m 12 p.1.25
35	2.0112.219.2	2	screw m 8 p.1.25x55
36	2.7099.040.0/10	1	pressure switch
37	2.1560.008.0	1	gasket 12.2 x 18
38	0.041.1556.0	1	oil filter element
39	2.3339.094.1/10	1	pipe fitting m 20 p.1.5-3/4 gas

Section: ENGINE
LUBRICATION

Fig.	P/n	QTY	Name
40	0.052.1530.0	1	tip
42	0.052.1571.0	1	small piston
43	2.4019.270.1	1	spring 9.7x54x2
44	0.054.1558.0/10	1	stop
45	2.1630.213.0	1	roll pin 3x32

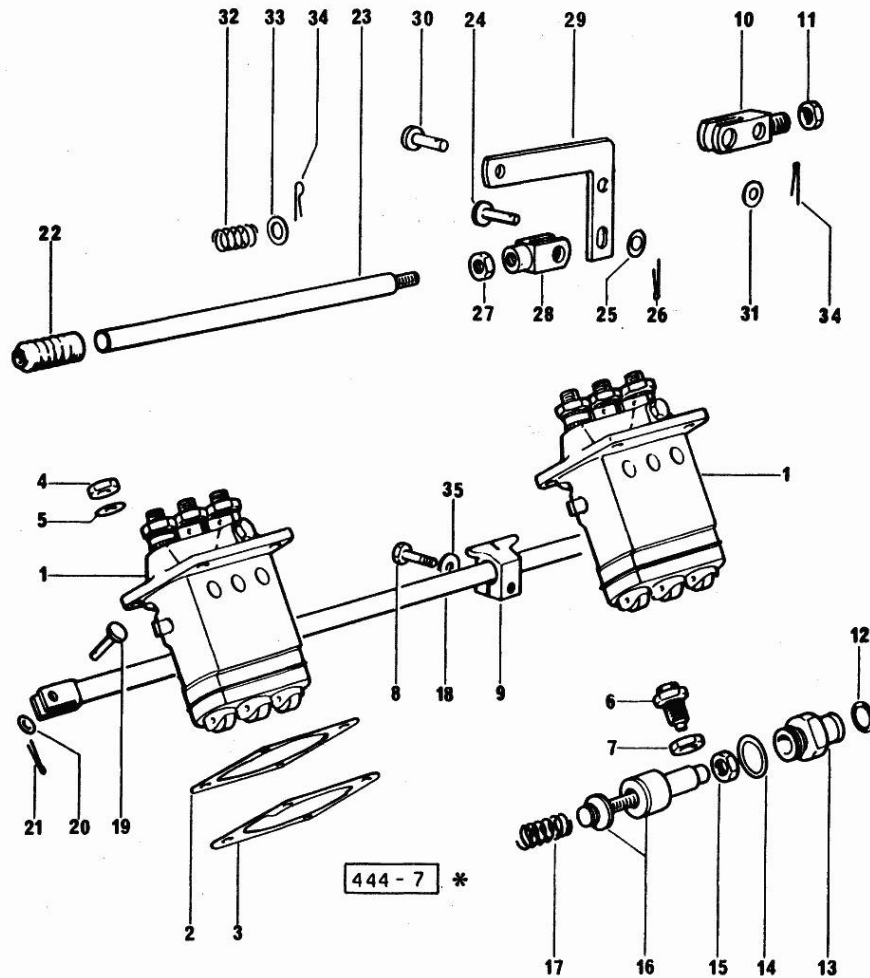


Section: ENGINE

FUEL FEED - INJECTION PUMP

Fig.	P/n	QTY	Name
------	-----	-----	------

Notes:
[H-6136]



1	2.4639.100.0/10	2	injector pump ☞ 2.4639.100.0/10 ☞ 01.00.10
2	0.041.1658.0	6	shim mm 0.20
2	0.041.1659.0	1	shim mm 0.1
3	0.041.1694.0	2	gasket mm 0.1
3	0.041.1695.0	8	gasket mm 0.20
4	2.1099.056.1	8	special nut m8 p.1
5	2.1311.006.2	8	flat washer 8
6	0.044.1669.3/20	1	adapter
7	2.1099.066.1	1	special nut
8	2.0112.007.2	1	screw m 6 p.1 x 20
8	2.0112.013.2	1	screw m 6 p.1 x 35
9	0.057.1650.0	2	bracket
10	0.044.1656.0	1	support
11	2.1011.506.2	1	nut m 10 p.1
12	2.1530.015.0	1	oil seal 8.30x2.40
13	0.041.1666.0/40	1	plug
14	2.1560.019.0	1	copper gasket 24.3x30
15	2.1011.505.2	1	nut m 8 p.1
16	0.062.1652.6	1	adapter
17	2.4019.178.1/10	1	spring 14.6x34x0.8
18	0.041.1613.2	1	rod
19	2.1679.048.2	1	pin
20	2.1311.004.1	1	flat washer 6
21	2.1690.205.0	1	split pin A2x12
22	0.000.5617.0	1	guard
23	0.057.1671.0	1	ferrule
24	2.1679.048.2	1	pin
25	2.1310.002.2	1	flat washer 6.4x12.5
26	2.1690.205.0	1	split pin A2x12
27	2.1011.103.2	1	nut m 6 p.1
28	2.3510.003.2	1	fork m 6
29	0.054.1674.0	1	lever
30	2.1670.303.2	1	pin 8x18x15
31	2.1310.004.2	1	flat washer 8.4x17
32	2.4019.232.1	1	spring
33	2.1310.004.2	1	flat washer 8.4x17
34	2.1690.206.0	2	split pin
35	2.1579.455.1	1	spacer 6.2x12x14

Section: ENGINE

FUEL FEED - GOVERNOR

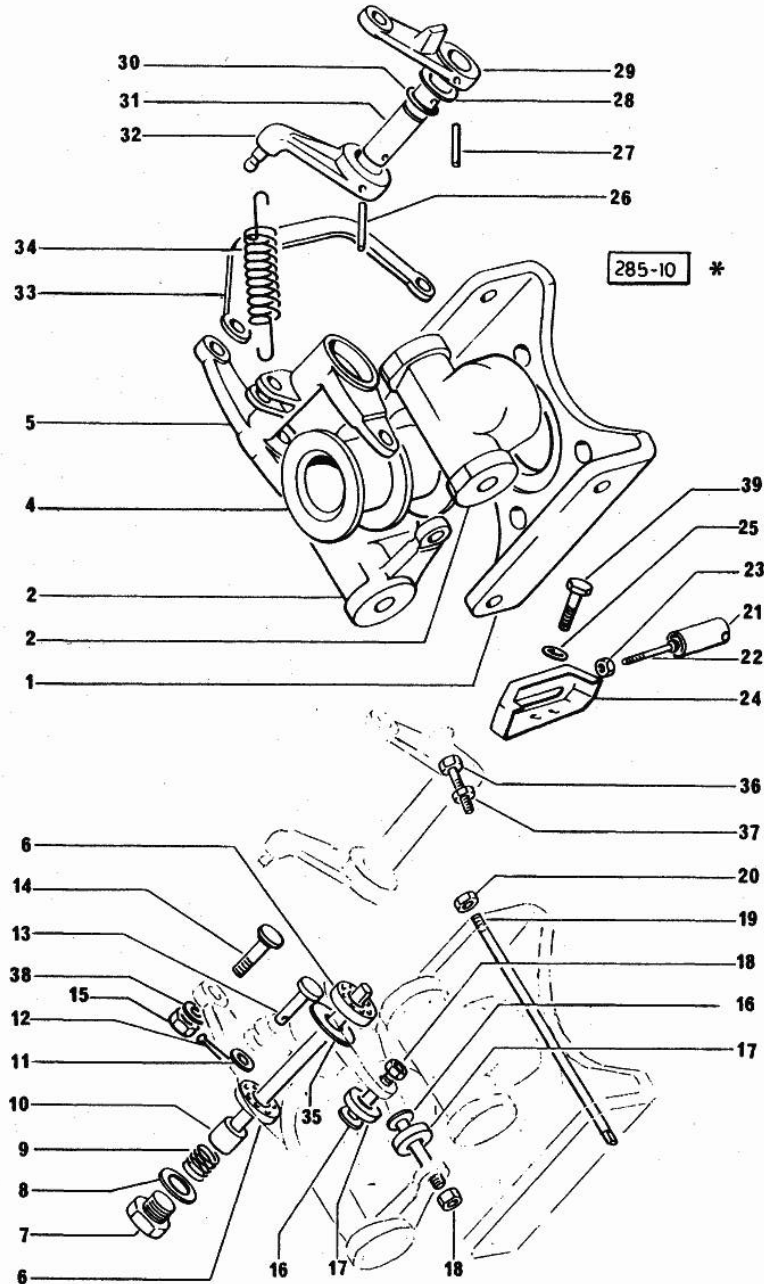


Fig.	P/n	QTY	Name
------	-----	-----	------

Notes:
[H-6136]

1	0.062.1615.0	1	bracket
2	0.062.1616.0	2	adjust.rocker
4	0.041.1618.0	1	sleeve
5	0.062.1619.0	1	lever
6	2.2999.158.0	2	special bearing
7	2.3110.002.1	1	plug 1/4" gas
8	2.1560.008.0	1	gasket 12.2 x 18
9	2.4019.283.1	1	spring
10	0.041.1620.0	1	pin
11	2.1310.001.2	1	flat washer 5.3 x 10
12	2.1690.104.0	1	split pin a.1 5x10
13	2.1670.005.2	1	pin 5x22x20
14	0.074.1655.0	1	pin
15	2.1011.103.2	1	nut m 6 p.1
16	0.054.1654.0/10	4	pin
17	0.062.1653.0	4	roller
18	2.1019.007.1	4	special nut m 6 p.1
19	0.062.1617.0/10	2	pin
20	2.1120.305.2	2	self-locking nut m 8 p.1 x 8
21	0.062.1664.0	1	sleeve
22	2.0220.317.1	1	screw
23	2.1011.102.2	1	nut m 5 p.0.7
24	0.052.1661.2/20	1	small cover
25	2.1310.002.2	2	flat washer 6.4x12.5
26	2.1630.410.0	1	roll pin 4 x 20
27	2.1630.511.0	1	roll pin 5x24
28	2.1599.141.0	1	shoulder ring 12.5x19x1.5
29	0.041.1621.0	1	lever
30	2.1530.016.0	1	oil seal 8.73 x 1.78
31	0.041.1655.0/10	1	pin
32	0.042.1621.0	1	lever
33	0.074.1622.0	1	rod
34	2.4049.095.1/10	1	spring
35	2.1599.248.1	2	shim 7x11x1
36	2.0112.009.2	1	screw m 6 p.1 x 25
37	2.1011.103.2	1	nut m 6 p.1
38	2.1481.005.1	4	washer 6, d128
39	2.0112.004.2	2	screw m 6 p.1 x 14

Thank you so much for reading.
Please click the “Buy Now!”
button below to download the
complete manual.



After you pay.

You can download the most
perfect and complete manual in
the world immediately.

Our support email:

ebooklibonline@outlook.com