

**DRIVEN FRONT AXLE 358850**

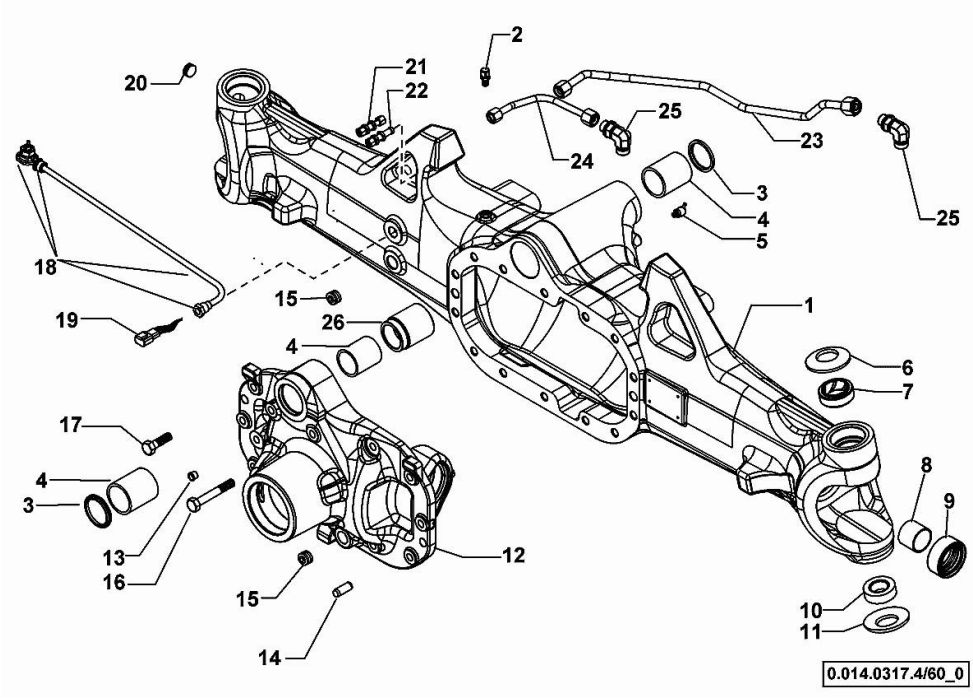
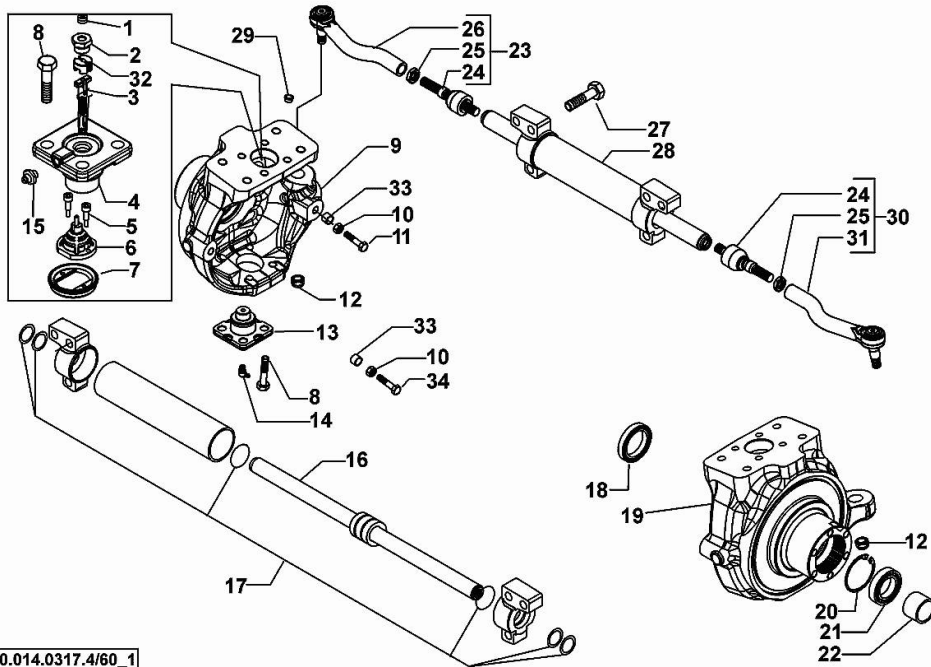


Fig.	P/n	QTY	Name
1	0.900.0965.6	1	casing
2	0.900.0079.8	1	breather m 10 p.1
3	0.900.0079.9	2	circlip
4	0.900.0080.0	3	bushing
5	0.900.0080.1	1	grease gun m 8 p.1, 45°
6	0.900.0080.2	2	spring
7	0.900.0080.3	2	bushing
8	0.900.0080.4	2	bushing
9	0.900.0912.6	2	oil seal 40x65x27,5
10	0.900.0080.6	2	bearing
11	0.900.0080.7	2	spring
12	0.900.0080.8	1	support
13	0.900.0893.4	1	plug D1
14	0.900.0081.0	2	pin Ø 15x45
15	0.900.0081.1	2	plug m 24 p.1.5
16	0.900.0081.2	2	screw m 14x75
17	0.900.0081.3	12	screw m14 x 40
18	0.900.0504.8	1	sensor - KIT
19	0.900.0081.5	1	connector
20	0.900.0081.6	1	plug m 26 p.1.5
21	0.900.0081.7	1	pipe fitting
22	0.900.0081.8	1	pipe fitting
23	04454985	1	tube
24	04454984	1	tube
25	0.900.0082.1	2	pipe fitting
26	0.900.0082.2	1	bushing

0.014.0317.4/60\_0

**STEERING CYLINDER 358850**

Fig.	P/n	QTY	Name
1	0.900.0894.3	2	plug
2	0.900.0082.4	2	screw m 20 p.1.5
3	0.900.0965.7	1	small pin
4	0.900.0502.5	2	pin
5	0.900.0082.7	2	screw m 4 x 10
6	0.900.0504.8	1	sensor - KIT
7	0.900.0865.2	1	cover
8	0.900.0082.9	16	screw m 14 x 35
9	0.900.0083.0	1	cap sx/lh/li
10	0.900.0105.8	4	nut m 14
11	0.900.0948.6	2	screw m 14
12	0.900.0083.3	2	nut m 20 p.1
13	0.900.0083.4	2	pin
14	0.900.0083.5	2	grease gun m 6 p.l, 45°
15	0.900.0542.4	1	grease gun m 6 p.l
16	0.900.0083.7	1	stem
17	0.900.0083.8	1	gasket set
18	0.900.0083.9	2	oil seal 56x80x13/14,5
19	0.900.0084.0	1	cap dx/rh/re
20	0.900.0084.1	2	circlip
21	0.900.0084.2	2	bearing
22	0.900.0084.3	2	spacer
23	0.900.0084.4	1	rod sx/lh/li
24	0.900.0084.5	2	ball joint
25	0.900.0084.6	2	nut m 24x10
26	0.900.0525.2	1	rod sx/lh/li
27	0.900.0791.2	6	screw m18x70
28	0.900.0527.5	1	jack
29	0.900.0085.0	8	plug
30	0.900.0085.1	1	rod dx/rh/re
31	0.900.0525.1	1	rod dx/rh/re
32	0.900.0961.2	1	small block
33	0.009.4379.0	4	shoe
35	0.900.0791.4	2	screw M14x60



0.014.0317.4/60\_1

**BEVEL WHEEL GEAR 358850**

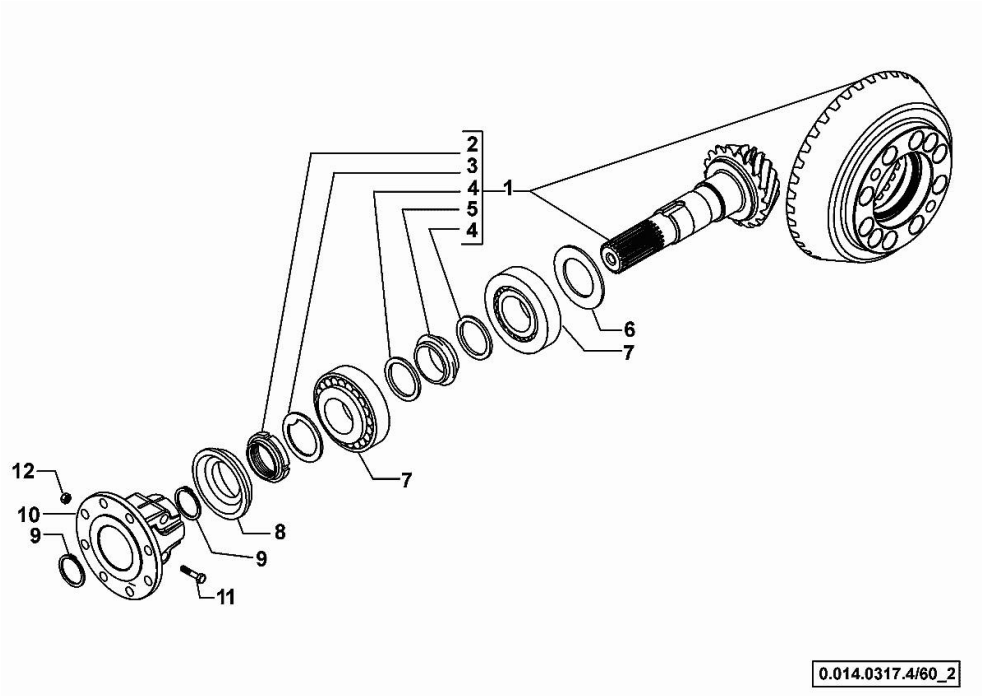


Fig.	P/n	QTY	Name
1	0.900.0085.4	1	bevel drive Z = 14/37
2	0.900.0085.5	1	ring nut m 40 p.1.5
3	0.900.0085.6	1	washer
4	0.900.0085.7	2	washer
5	0.900.0085.8	1	spacer
6	0.900.0085.9	1	shim mm 2.50
6	0.900.0086.0	1	shim mm 2.60
6	0.900.0086.1	1	shim mm 2.70
6	0.900.0086.2	1	shim mm 2.80
6	0.900.0086.3	1	shim mm 2.90
6	0.900.0086.4	1	shim mm 3.00
6	0.900.0086.5	1	shim mm 3.10
6	0.900.0086.6	1	shim mm 3.20
6	0.900.0086.7	1	shim mm 3.30
6	0.900.0086.8	1	shim mm 3.40
7	0.900.0086.9	2	bearing
8	0.900.0087.0	1	oil seal 35x92/98x13/27
9	0.900.0087.1	2	circlip d = 35
10	0.900.0965.8	1	flange
11	0.900.0960.9	2	screw
12	0.900.0961.0	2	nut

0.014.0317.4/60\_2

**DIFFERENTIAL 358850**

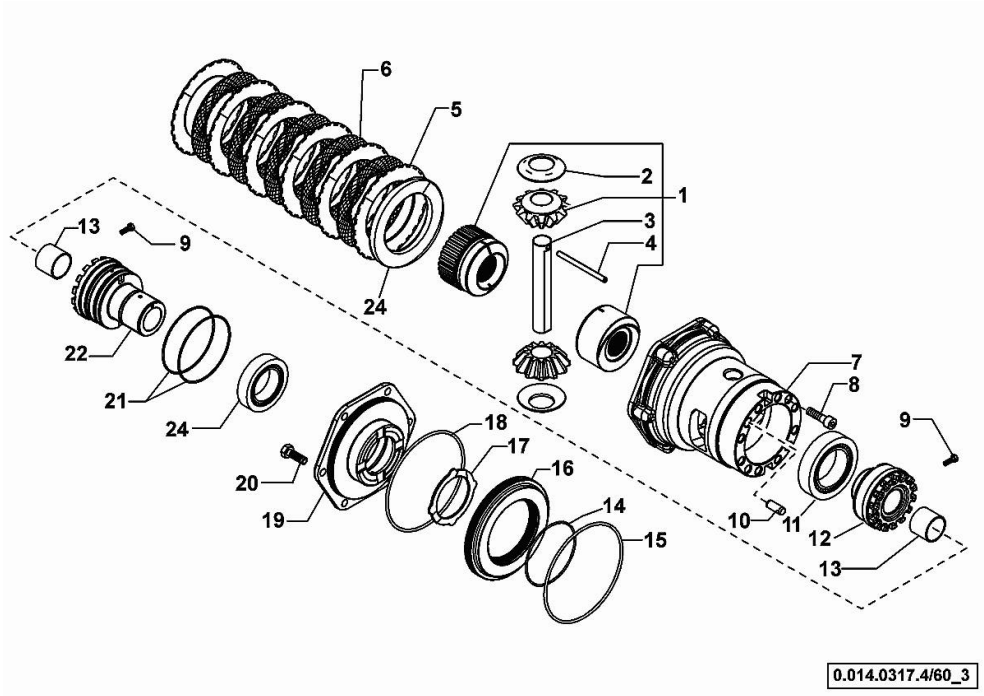
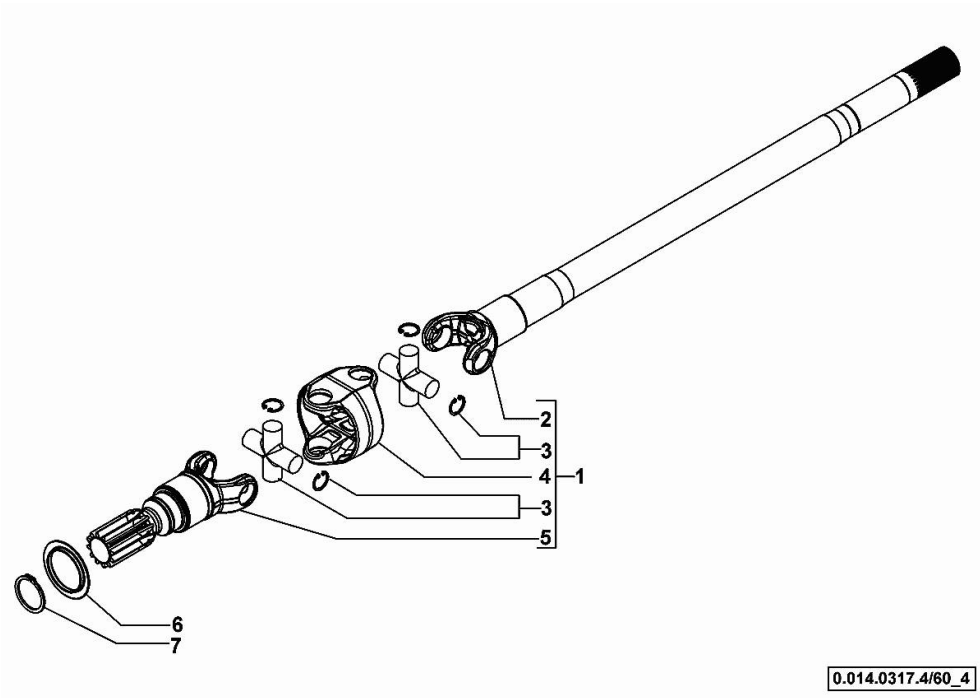


Fig.	P/n	QTY	Name
1	0.900.0966.2	1	differential lock - KIT
2	0.900.0087.4	2	slewing ring
3	0.900.0087.5	1	pin
4	0.900.0087.6	1	pin D7x91
5	0.900.0087.7	6	disc
6	0.900.0087.8	5	disc
7	0.900.0087.9	1	differential carrier
8	0.900.0088.0	10	screw m 12 x 35
9	0.900.0088.1	2	screw m 6 x 25
10	0.900.0088.3	2	pin Ø 12 x 28
11	0.900.0088.4	1	bearing
12	0.900.0088.5	1	ring nut M94x1.5
13	0.900.0088.6	2	bushing
14	0.900.0088.7	1	oil seal
15	0.900.0088.8	1	oil seal
16	0.900.0088.9	1	piston
17	0.900.0089.0	1	disc
18	0.900.0089.1	1	oil seal
19	0.900.0952.0	1	cover - KIT
20	0.900.0089.3	6	screw m 10 x 35
21	0.900.0089.8	2	oil seal
22	0.900.0089.9	1	ring nut m 94 p.1.5
23	0.900.0090.0	1	disc
24	0.900.0090.1	1	bearing

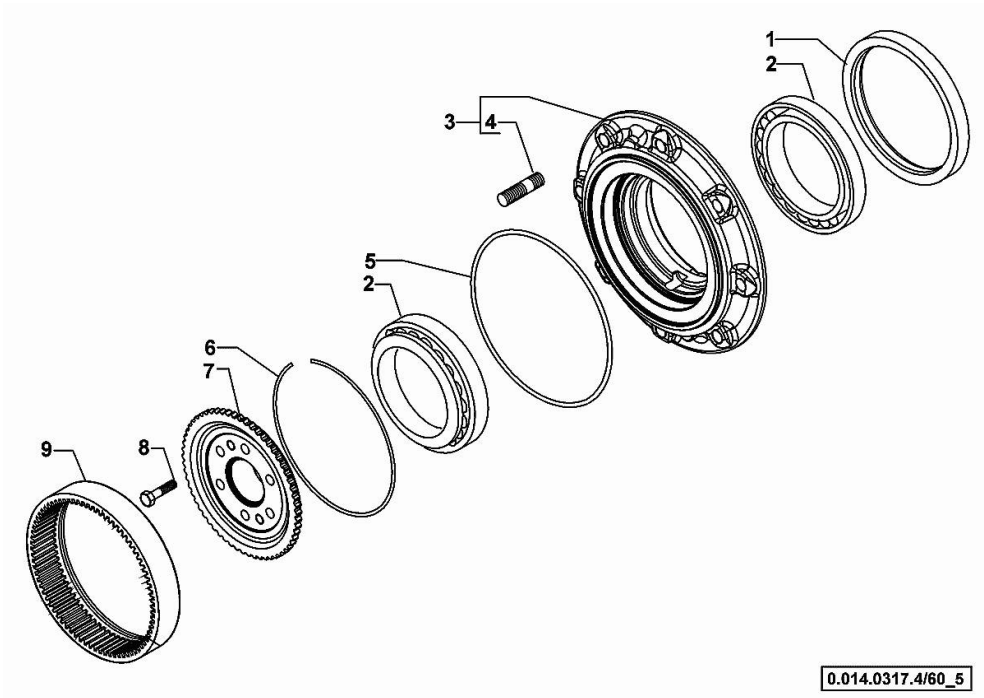
**DOUBLE COUPLING 358850**

Fig.	P/n	QTY	Name
1	0.900.0912.4	1	shaft kpl. (sx/lh/li)
1	0.900.0912.5	1	shaft kpl. (dx/rh/re)
2	0.900.0966.3	1	fork dx/rh/re
2	0.900.0966.4	1	fork sx/lh/li
3	0.900.1415.7	4	universal joint
4	0.900.0966.0	2	joint
5	0.900.0090.8	2	fork
6	0.900.0090.9	2	cover
7	0.900.0091.0	2	circlip



**WHEEL HUB 358850**

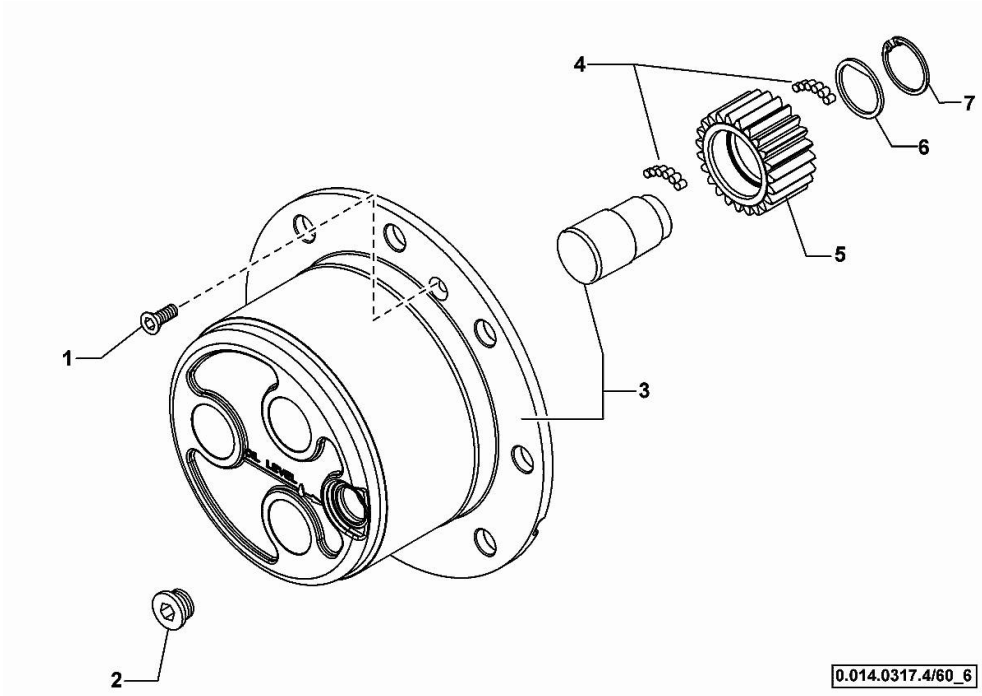
Fig.	P/n	QTY	Name
1	0.900.0091.1	2	oil seal 155x180x14,5
2	0.900.1360.6	4	bearing
3	0.900.0530.9	2	wheel hub
4	0.900.0091.4	16	stud bolt
5	0.900.0091.5	2	oil seal
6	0.900.0091.6	2	circlip
7	0.900.1360.7	2	hub
8	0.900.0091.8	12	screw m 12 x 45
9	0.900.0091.9	2	crown wheel Z = 60



0.014.0317.4/60\_5

**PLANETARY GEAR 358850**

Fig.	P/n	QTY	Name
1	0.900.0092.0	4	screw m 8 p.1.25 x 20
2	0.900.0092.1	2	plug m 30 p.2
3	0.900.0965.9	2	spider - KIT
4	0.900.0092.3	37	roller
5	0.900.0092.4	6	gear Z = 23
6	0.900.0092.5	6	slewing ring
7	0.900.0092.6	6	circlip



**DRIVEN FRONT AXLE - 370481**

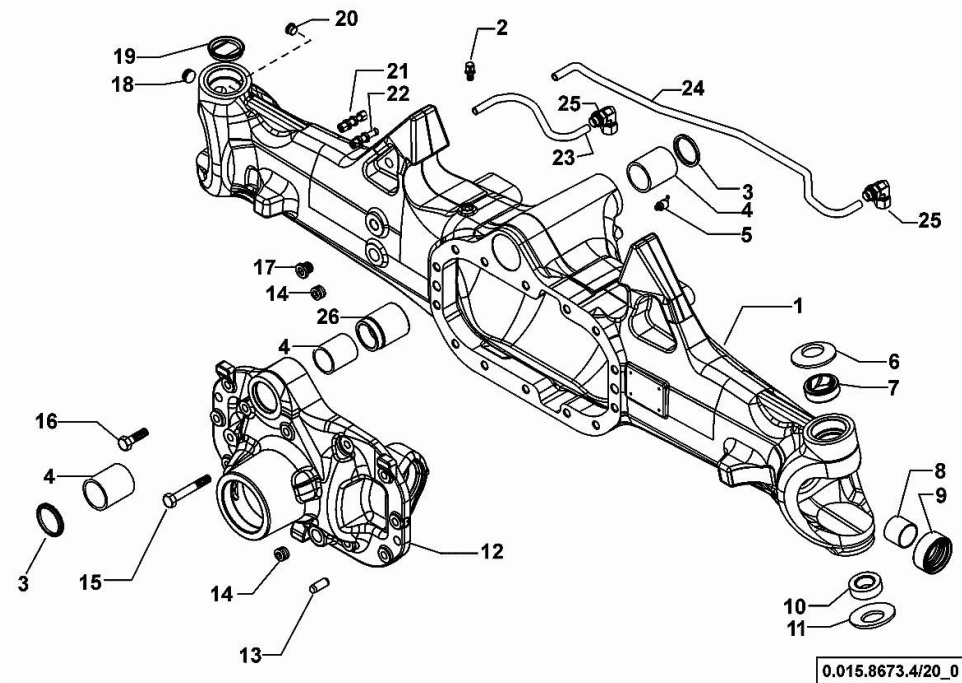


Fig.	P/n	QTY	Name
1	0.900.0965.6	1	casing
2	0.900.0079.8	1	breather m 10 p.1
3	0.900.0079.9	2	circlip
4	0.900.0080.0	3	bushing
5	0.900.0080.1	1	grease gun m 8 p.1, 45°
6	0.900.0080.2	2	spring
7	0.900.0080.3	2	bushing
8	0.900.0080.4	2	bushing
9	0.900.0912.6	2	oil seal 40x65x27,5
10	0.900.0080.6	2	bearing
11	0.900.0080.7	2	spring
12	0.900.0105.4	1	support
13	0.900.0081.0	2	pin Ø 15x45
14	0.900.0081.1	2	plug m 24 p.1.5
15	0.900.0081.2	2	screw m 14x75
16	0.900.0081.3	12	screw m14 x 40
17	0.900.0105.5	1	bottom
18	0.900.0081.6	1	plug m 26 p.1.5
19	0.900.0966.6	1	small cover
20	0.900.0105.7	1	bottom
21	0.900.0081.7	1	pipe fitting
22	0.900.0081.8	1	pipe fitting
23	0.900.0081.9	1	tube
24	0.900.0082.0	1	tube
25	0.900.0082.1	2	pipe fitting
26	0.900.0082.2	1	bushing



**STEERING CYLINDER - 370481**

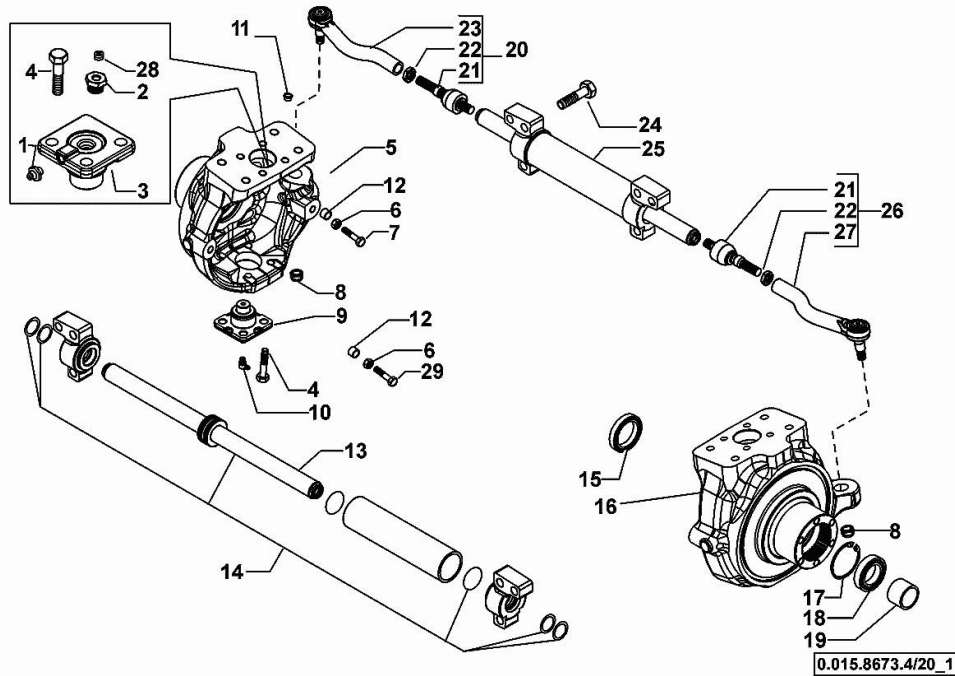


Fig.	P/n	QTY	Name
1	0.900.0542.4	2	grease gun m 6 p.1
2	0.900.0082.4	2	screw m 20 p.1.5
3	0.900.0502.5	2	pin
4	0.900.0082.9	16	screw m 14 x 35
5	0.900.0083.0	1	cap sx/lh/li
6	0.900.0105.8	2	nut m 14
7	0.900.0948.6	2	screw m 14
8	0.900.0083.3	2	nut m 20 p.1
9	0.900.0083.4	2	pin
10	0.900.0083.5	2	grease gun m 6 p.1, 45°
11	0.900.0085.0	8	plug
12	0.009.4379.0	4	shoe
13	0.900.0083.7	1	stem
14	0.900.0083.8	1	gasket set
15	0.900.0083.9	2	oil seal 56x80x13/14,5
16	0.900.0084.0	1	cap dx/rh/re
17	0.900.0084.1	2	circlip
18	0.900.0084.2	2	bearing
19	0.900.0084.3	2	spacer
20	0.900.0084.4	1	rod sx/lh/li
21	0.900.0084.5	2	ball joint
22	0.900.0084.6	2	nut m 24x10
23	0.900.0525.2	1	rod sx/lh/li
24	0.900.0791.2	6	screw m18x70
25	0.900.0527.5	1	jack
26	0.900.0085.1	1	rod dx/rh/re
27	0.900.0525.1	1	rod dx/rh/re
28	0.900.0894.3	1	plug
29	0.900.0791.4	2	screw M14x60

**BEVEL WHEEL GEAR - 370481**

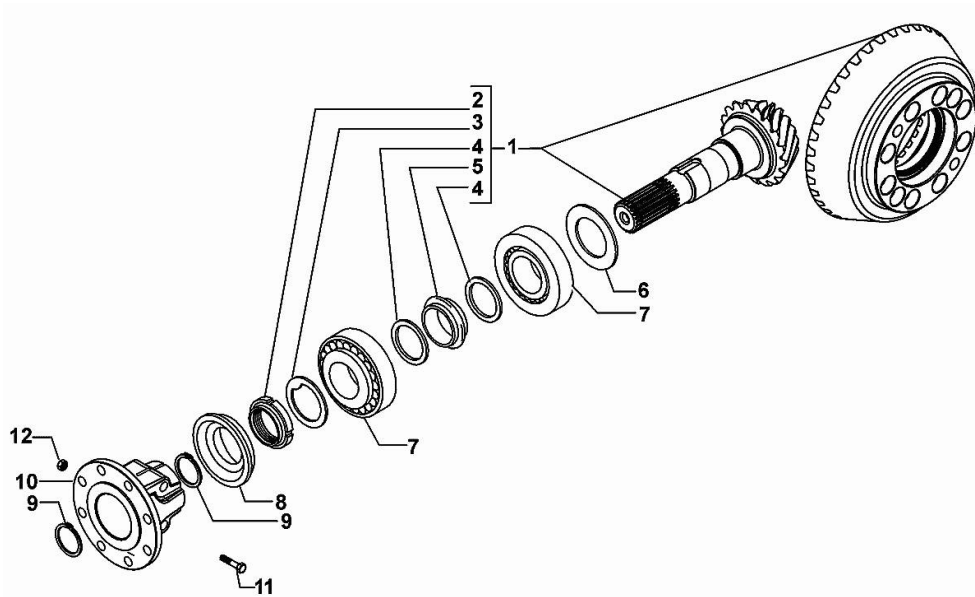


Fig.	P/n	QTY	Name
1	0.900.0085.4	1	bevel drive Z = 14/37
2	0.900.0085.5	1	ring nut m 40 p.1.5
3	0.900.0085.6	1	washer
4	0.900.0085.7	2	washer
5	0.900.0085.8	1	spacer
6	0.900.0085.9	1	shim mm 2.50
6	0.900.0086.0	1	shim mm 2.60
6	0.900.0086.1	1	shim mm 2.70
6	0.900.0086.2	1	shim mm 2.80
6	0.900.0086.3	1	shim mm 2.90
6	0.900.0086.4	1	shim mm 3.00
6	0.900.0086.5	1	shim mm 3.10
6	0.900.0086.6	1	shim mm 3.20
6	0.900.0086.7	1	shim mm 3.30
6	0.900.0086.8	1	shim mm 3.40
7	0.900.0086.9	2	bearing
8	0.900.0087.0	1	oil seal 35x92/98x13/27
9	0.900.0087.1	2	circlip d = 35
10	0.900.0965.8	1	flange
11	0.900.0960.9	2	screw
12	0.900.0961.0	2	nut

0.015.8673.4/20\_2

**DIFFERENTIAL - 370481**

0.015.8673.4/20\_3

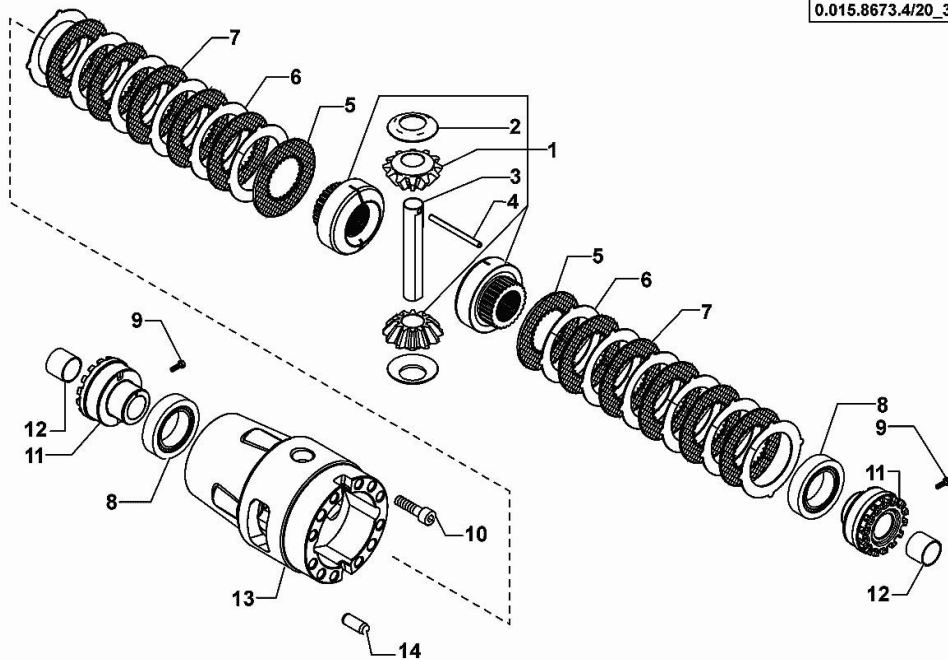
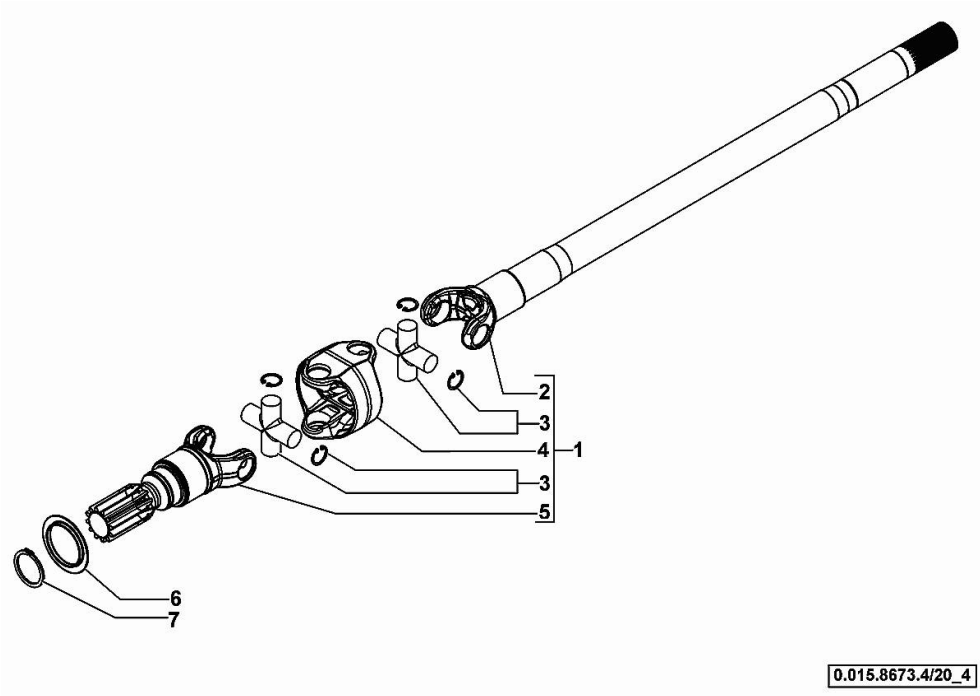


Fig.	P/n	QTY	Name
1	0.900.0966.7	1	set of gears
2	0.900.0087.4	2	slewing ring
3	0.900.0087.5	1	pin
4	0.900.0087.6	1	pin D7x91
5	0.900.0106.1	2	washer
6	0.900.0106.2	12	washer
7	0.900.0106.3	10	washer
8	0.900.0088.4	2	bearing
9	0.900.0088.1	2	screw m 6 x 25
10	0.900.0088.0	10	screw m 12 x 35
11	0.900.0088.5	2	ring nut M94x1.5
12	0.900.0088.6	2	bushing
13	0.900.0106.4	1	differential carrier
14	0.900.0088.3	2	pin Ø 12 x 28

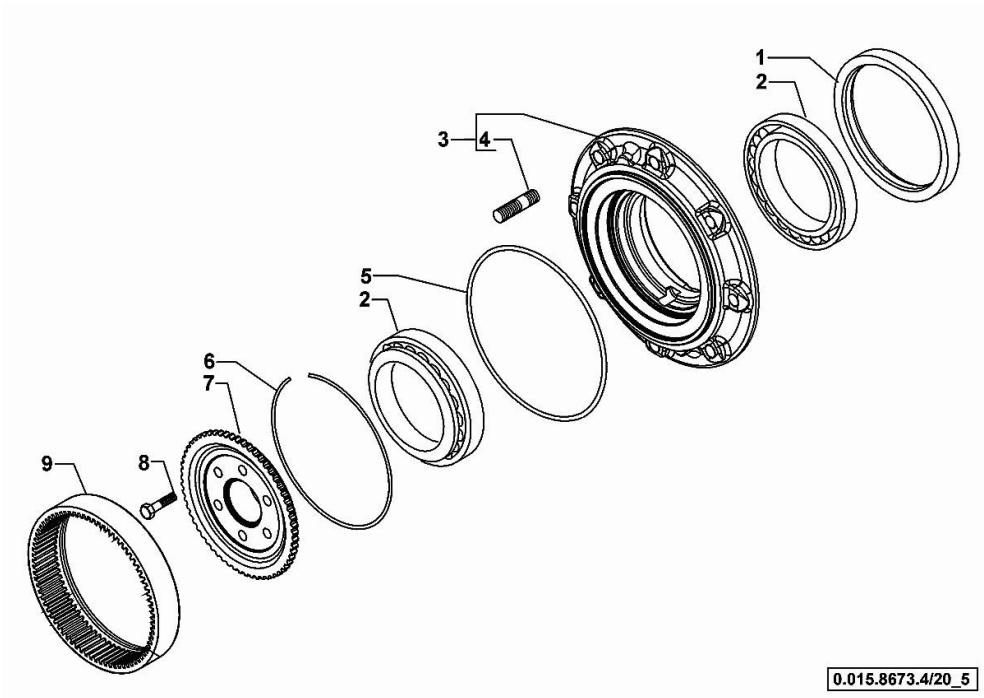
**DOUBLE COUPLING - 370481**

Fig.	P/n	QTY	Name
1	0.900.0912.4	1	shaft kpl. (sx/lh/li)
1	0.900.0912.5	1	shaft kpl. (dx/rh/re)
2	0.900.0966.3	1	fork dx/rh/re
2	0.900.0966.4	1	fork sx/lh/li
3	0.900.0966.5	4	universal joint
4	0.900.0966.0	2	joint
5	0.900.0090.8	2	fork
6	0.900.0090.9	2	cover
7	0.900.0091.0	2	circlip



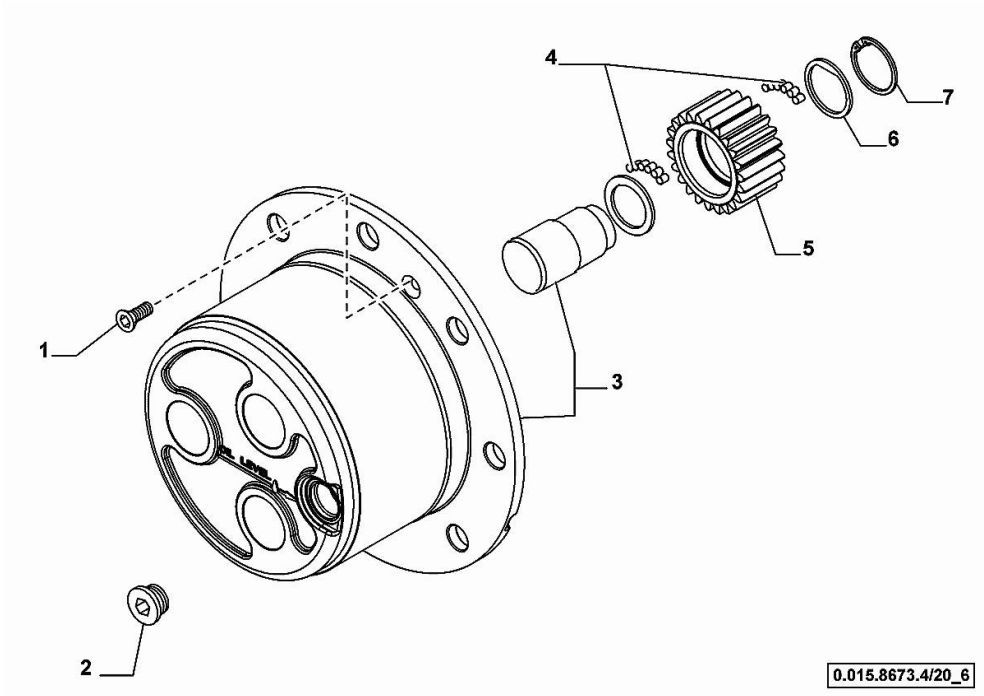
**WHEEL HUB - 370481**

Fig.	P/n	QTY	Name
1	0.900.0091.1	2	oil seal 155x180x14,5
2	0.900.0091.2	4	bearing
3	0.900.0530.9	2	wheel hub
4	0.900.0091.4	16	stud bolt
5	0.900.0091.5	2	oil seal
6	0.900.0091.6	2	circlip
7	0.900.1360.7	2	hub
8	0.900.0091.8	12	screw m 12 x 45
9	0.900.0091.9	2	crown wheel Z = 60

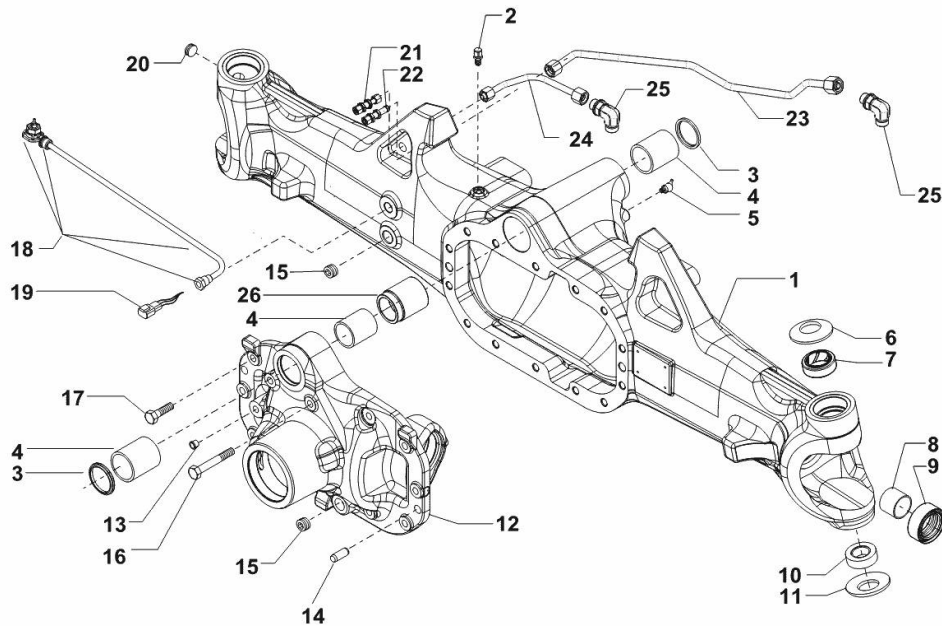


**PLANETARY GEAR - 370481**

Fig.	P/n	QTY	Name
1	0.900.0092.0	4	screw m 8 p.1.25 x 20
2	0.900.0092.1	2	plug m 30 p.2
3	0.900.0965.9	2	spider - KIT
4	0.900.0092.3	37	roller
5	0.900.0092.4	6	gear Z = 23
6	0.900.0092.5	6	slewing ring



**DRIVEN FRONT AXLE - 380999**



0.016.4986.4\_10-0

Fig.	P/n	QTY	Name
1	0.900.1416.2	1	front axle
2	0.900.0079.8	1	breather m 10 p.1
3	0.900.0079.9	2	circlip
4	0.900.0080.0	3	bushing
5	0.900.0080.1	1	grease gun m 8 p.1, 45°
6	0.900.0080.2	2	spring
7	0.900.0080.3	2	bushing
8	0.900.0080.4	2	bushing
9	0.900.0912.6	2	oil seal 40x65x27,5
10	0.900.1416.3	2	bearing
11	0.900.0080.7	2	spring
12	0.900.0080.8	1	support
13	0.900.0893.4	1	plug D1
14	0.900.0081.0	2	pin Ø 15x45
15	0.900.0081.1	2	plug m 24 p.1.5
16	0.900.0081.2	2	screw m 14x75
17	0.900.0081.3	12	screw m14 x 40
18	0.900.0504.8	1	sensor - KIT
19	0.900.0081.5	1	connector
20	0.900.0081.6	1	plug m 26 p.1.5
21	0.900.0081.7	1	pipe fitting
22	0.900.0081.8	1	pipe fitting
23	04454985	1	tube
24	04454984	1	tube
25	0.900.0082.1	2	pipe fitting
26	0.900.0082.2	1	bushing

Thank you so much for reading.  
Please click the “Buy Now!”  
button below to download the  
complete manual.



After you pay.

You can download the most  
perfect and complete manual in  
the world immediately.

Our support email:

[ebooklibonline@outlook.com](mailto:ebooklibonline@outlook.com)