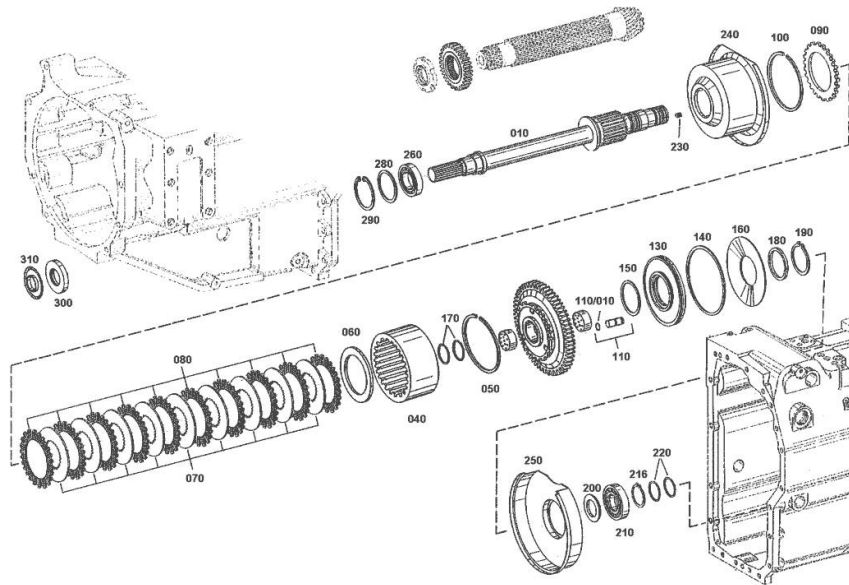


Section: GEAR
FRONT TRANSMISSION

Fig.	P/n	QTY	Name
------	-----	-----	------

Notes:
 [IRON 140 S]

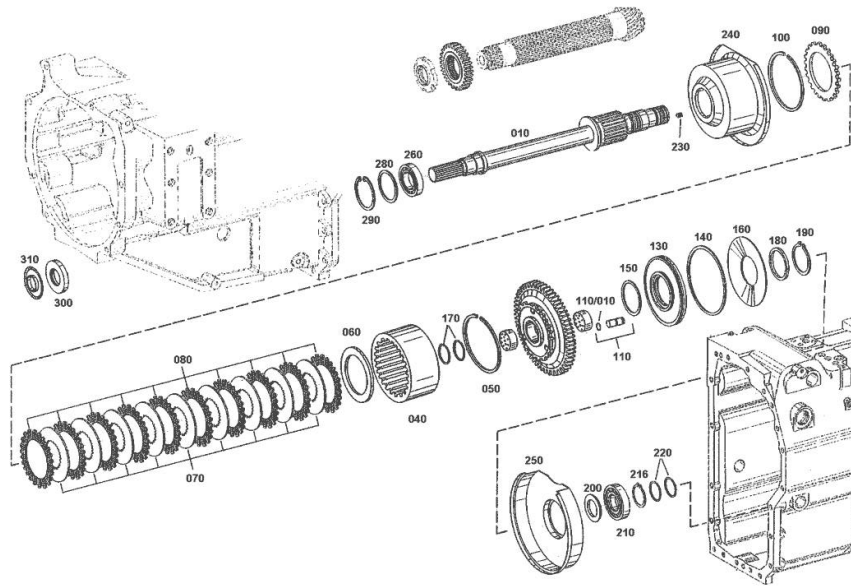


10	0.900.0121.9	1	shaft Z = 32 -> (...)
10	04415926	1	shaft (...) <-
40	04416804	1	support z = 27
50	04415928	1	ring
60	0.010.2875.2	1	shim mm 7.3
60	04416588	1	shim mm 5.5
60	04416589	1	shim mm 5.7
60	04416590	1	shim mm 5.9
60	04416591	1	shim mm 6.1
60	04416592	1	shim mm 6.3
60	04416593	1	shim mm 6.5
60	04416594	1	shim mm 6.7
60	04416595	1	shim mm 6.9
60	04416596	1	shim mm 7.1
60	04416598	1	shim mm 7.5
60	04416599	1	shim mm 7.7
60	04416600	1	shim mm 7.9
60	04416601	1	shim mm 8.1
60	04416602	1	shim mm 8.3
60	04416603	1	shim mm 8.5
60	04416604	1	shim mm 8.7
70	04415930	9	disc
80	04416412	10	disc
90	04415932	1	disc
100	04415933	1	circlip mm 2.5
110	0.010.2876.0	3	pin
110.10	0.010.3258.2	3	oil seal 12x2.5
130	04427572	1	piston
140	04415936	1	ring
150	04415937	1	ring
160	04415938	1	spring
170	04415939	2	ring 45x2
180	04436290	1	washer
190	0.010.2876.1	1	circlip 68x2.5
200	04415941	1	washer
210	04415942	1	bearing
216	0.010.2876.2	1	circlip 40x2.5
220	04416364	2	ring 40x2
230	0.900.0067.3	1	plug

Section: GEAR

FRONT TRANSMISSION

Fig.	P/n	QTY	Name
			-> (...)
230	04415944	1	screw m 6 x 8
			(...) <-
240	04415945	1	plate
250	04415946	1	plate
260	0.010.2877.0	1	ball bearing
280	0.010.3259.0	1	washer mm 2.00
280	0.010.3259.1	1	washer mm 2.05
280	0.010.3259.2	1	washer mm 2.10
280	0.010.3260.0	1	washer mm 2.15
280	0.010.3260.1	1	washer mm 2.25
280	0.010.3260.2	1	washer mm 2.35
280	0.010.3261.0	1	washer mm 2.45
280	0.010.3261.1	1	washer mm 2.55
280	0.010.3261.2	1	washer mm 2.65
280	04417009	1	washer mm 2.20
280	04417010	1	washer mm 2.30
280	04417011	1	washer mm 2.40
280	04417012	1	washer mm 2.50
280	04417013	1	washer mm 2.60
280	04417014	1	washer mm 2.70
280	04417015	1	washer mm 2.80
280	04424426	1	washer mm 2.90
280	04424427	1	washer mm 3.00
280	04424428	1	washer mm 3.10
280	04424429	1	washer mm 3.20
290	04415949	1	circlip 75x3
300	04415950	1	oil seal
310	04415951	1	plate

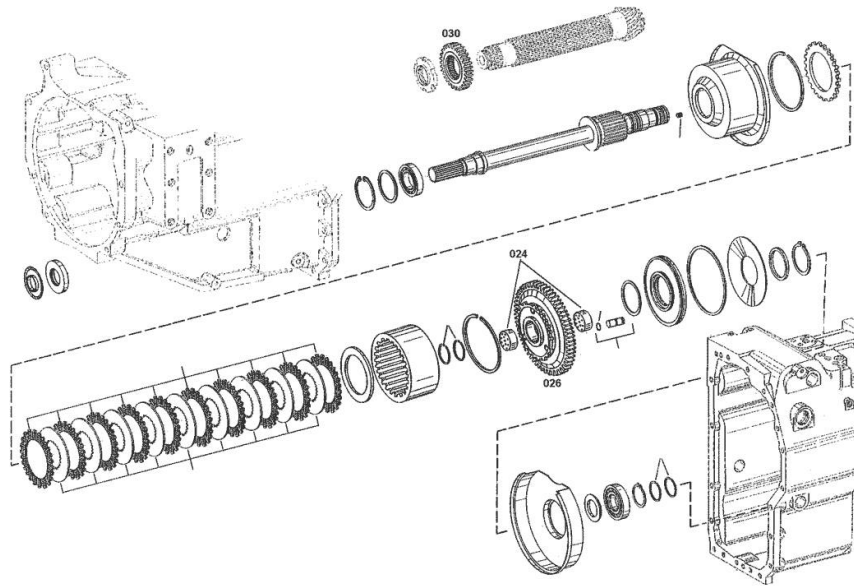


Section: GEAR
FRONT TRANSMISSION

Fig.	P/n	QTY	Name
------	-----	-----	------

Notes:
 [IRON 140 S]

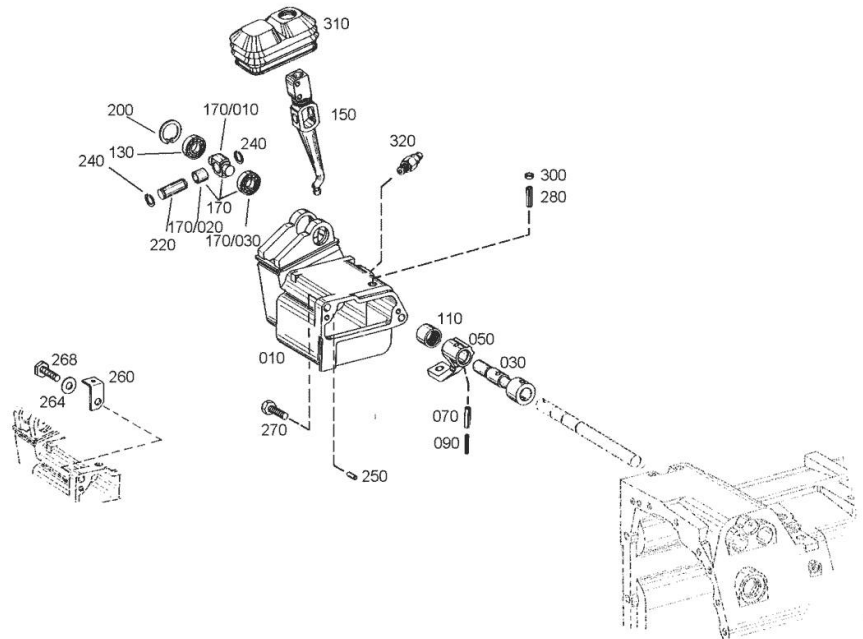
24	04434385	2	bushing
26	0.010.2875.1	1	gear Z = 68
30	04416807	1	gear z = 33



GEARSHIFT CONTROL WITH HYDRAULIC SHUTTLE

Fig.	P/n	QTY	Name
------	-----	-----	------

Notes:
[IRON 140 S]



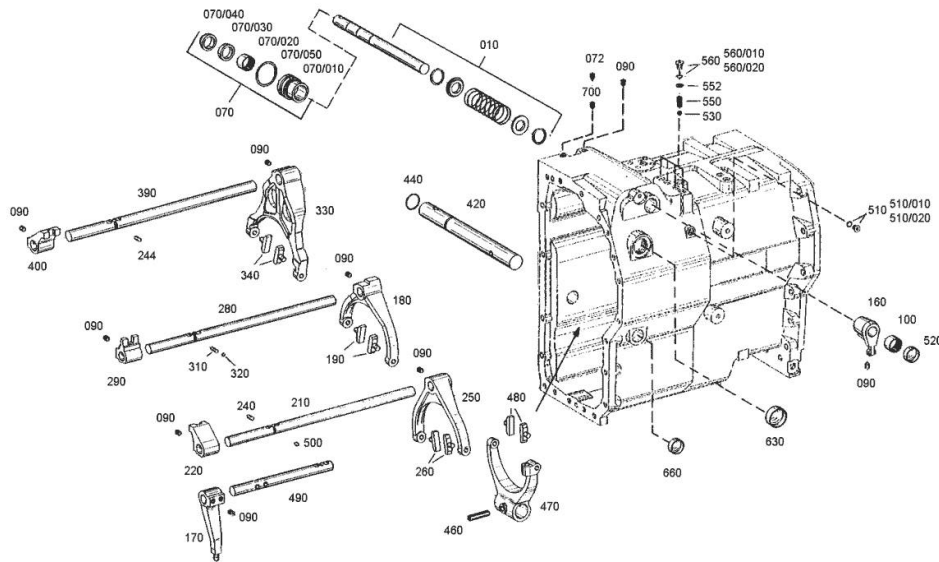
10	0.010.2908.2	1	casing
30	04416053	1	shaft
50	04416054	1	arm
70	04416707	1	pin 10x36
90	0.010.2617.1	1	pin 6x36
110	04416438	1	pin
130	04416057	1	bearing 20x42x12
150	04423361	1	gear lever
170	0.010.2884.2	1	universal joint
170.10	04416060	1	universal joint
170.20	04416061	1	bearing
170.30	04416057	1	bearing 20x42x12
200	0.010.2617.2	1	circlip 42x1.75
220	04416062	1	pin
240	04416063	2	circlip SW 20
250	04416064	2	pin 10 m 6x24
260	0.010.2885.0	1	support
264	04427605	2	ring
268	04433252	1	screw m 12 x 50
270	0.010.2885.1	1	screw m 12 x 40
280	04416440	1	pin 12x40
300	0.010.2885.2	1	cover 16
310	04416803	1	guard
320	04416066	1	switch

GEARSHIFT LEVER - WITH HYDRAULIC SHUTTLE - AT CREEP SPEED

Fig.	P/n	QTY	Name
------	-----	-----	------

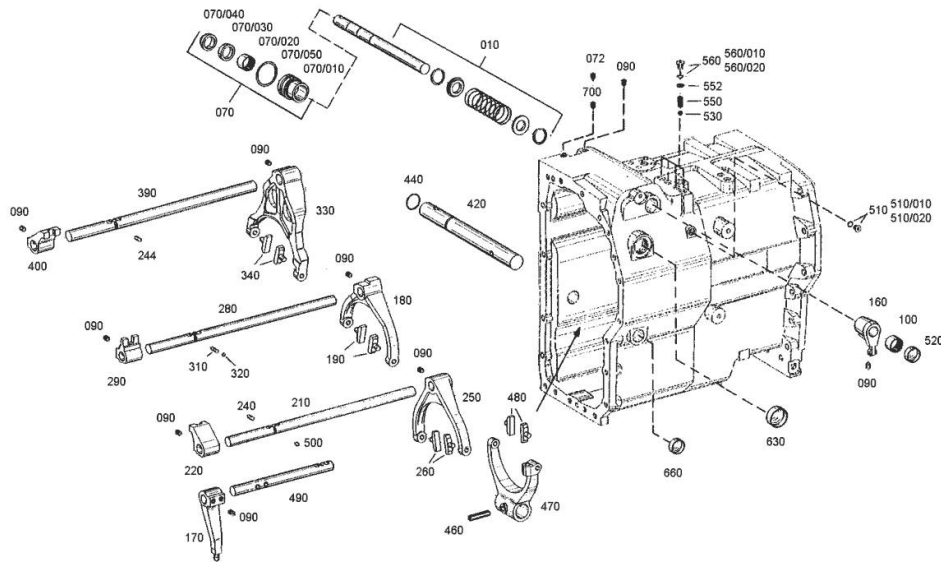
Notes:
[IRON 140 S]

10	0.010.2861.2	1	rod
70	0.010.2862.0	1	bushing
70.10	04415769	1	bush
70.20	04415772	1	bearing
70.30	04415773	1	oil seal 25x35x7
70.40	04415774	1	oil seal AS 25x35x7x10
70.50	04416048	1	oil seal 37x3
72	01272647	1	stud bolt L = 13.7
90	01272647	16	stud bolt L = 13.7
100	04415772	1	bearing
160	04416044	1	small lever
170	04415777	1	small lever
180	0.900.0121.6	1	clamp
190	04415779	2	shoe
210	04423248	1	guide
220	04415781	1	driver
240	04415782	1	pin
244	04415783	1	pin
250	04415784	1	fork
260	04415779	2	shoe
280	0.900.0121.7	1	rod
280	04423249	1	guide -> (...) (...) <-
290	04415786	1	driver A = 4.2
290	04424422	1	driver A = 3.6
290	04424423	1	driver A = 3.9
290	04424424	1	driver A = 4.5
290	04424425	1	control panel A = 4.8
310	01299482	1	spring
320	04415788	1	circlip B 7 din 7993
330	04423251	1	fork
340	04415779	2	shoe
390	04423250	1	rod
400	04415791	1	driver
420	04419231	1	rod
440	0.010.2862.1	1	oil seal 25x3
460	0.010.2862.2	1	pin 12x45
470	04415793	1	fork
480	04415779	2	shoe
490	04415794	1	rod



GEARSHIFT LEVER - WITH HYDRAULIC SHUTTLE - AT CREEP SPEED

Fig.	P/n	QTY	Name
500	04415795	1	pin
510	0.000.0000.1	1	cannot be supplied
510.10	04434512	1	plug m 10 p.1
510.20	04415683	1	oil seal 8x1.5
520	04433214	2	cover 32
530	04309268	4	ball
550	0.010.2907.1	4	spring
552	0.010.2907.2	4	washer
560	0.000.0000.1	4	cannot be supplied
560.10	0.010.2617.3	4	screw m 12 p.1.5
560.20	04415796	4	oil seal 9.5x2
630	01122153	1	cover 42
660	0.010.2863.0	1	cover 30
700	01272647	1	stud bolt L = 13.7



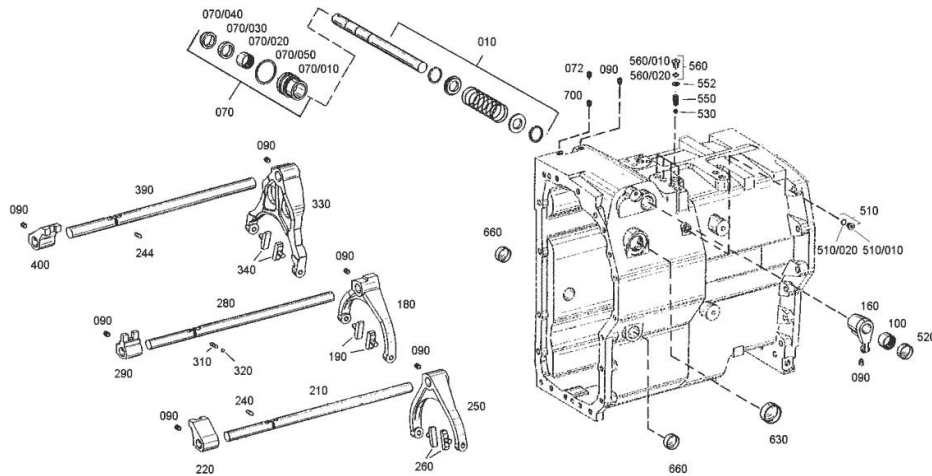
Section: GEAR

GEARSHIFT LEVER - WITH HYDRAULIC SHUTTLE - WITHOUT CREEP SPEED

Fig.	P/n	QTY	Name
------	-----	-----	------

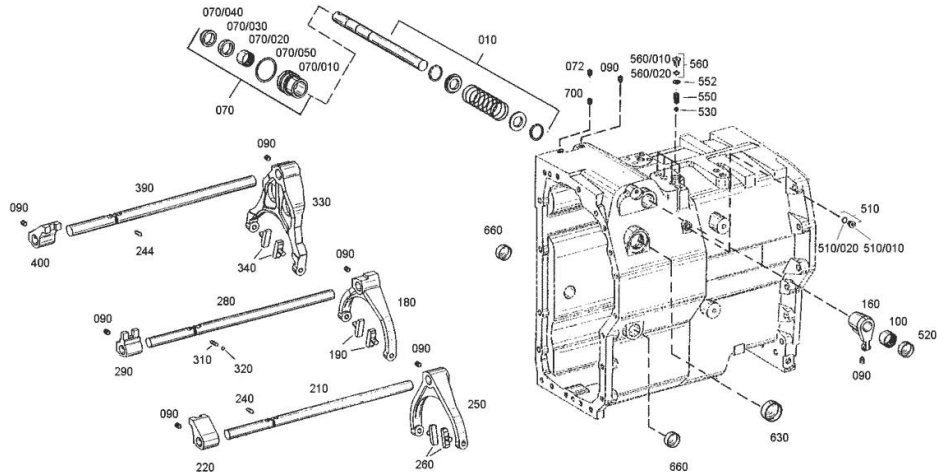
Notes:
[IRON 140 S]

10	0.010.2861.2	1	rod
70	0.010.2862.0	1	bushing
70.10	04415769	1	bush
70.20	04415772	1	bearing
70.30	04415773	1	oil seal 25x35x7
70.40	04415774	1	oil seal AS 25x35x7x10
70.50	04416048	1	oil seal 37x3
72	01272647	1	stud bolt L = 13.7
90	01272647	14	stud bolt L = 13.7
100	04415772	1	bearing
160	04416044	1	small lever
180	0.900.0121.6	1	clamp
190	04415779	2	shoe
210	04423248	1	guide
220	04415781	1	driver
240	04415782	1	pin
244	04415783	1	pin
250	04415784	1	fork
260	04415779	2	shoe
280	0.900.0121.7	1	rod -> (...)
280	04423249	1	guide (...) <-
290	04415786	1	driver A = 4.2
290	04424422	1	driver A = 3.6
290	04424423	1	driver A = 3.9
290	04424424	1	driver A = 4.5
290	04424425	1	control panel A = 4.8
310	01299482	1	spring
320	04415788	1	circlip B 7 din 7993
330	04423251	1	fork
340	04415779	2	shoe
390	04423250	1	rod
400	04415791	1	driver
510	0.000.0000.1	1	cannot be supplied
510.10	04434512	1	plug m 10 p.1
510.20	04415683	1	oil seal 8x1.5
520	04433214	1	cover 32
530	04309268	3	ball



GEARSHIFT LEVER - WITH HYDRAULIC SHUTTLE - WITHOUT CREEP SPEED

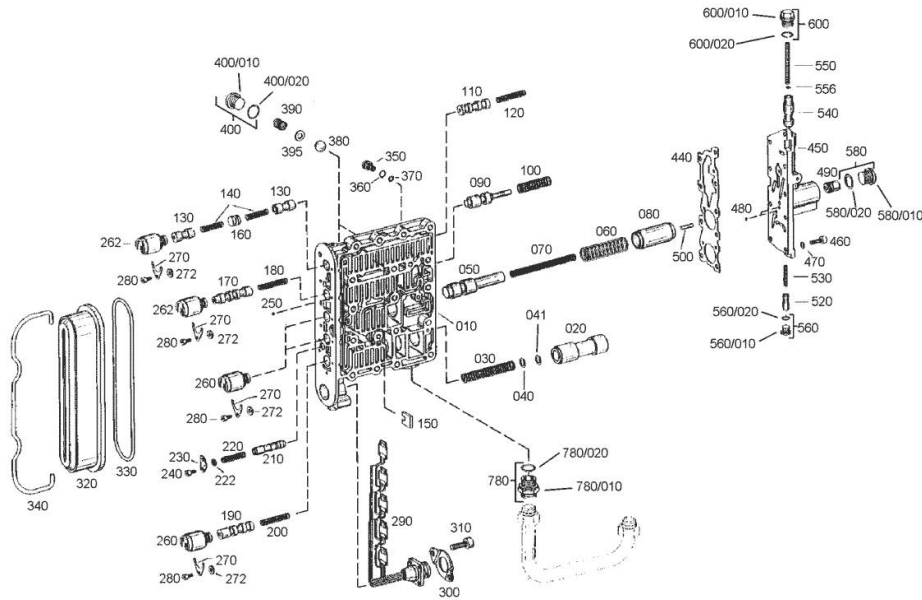
Fig.	P/n	QTY	Name
550	0.010.2907.1	3	spring
552	0.010.2907.2	4	washer
560	0.000.0000.1	4	cannot be supplied
560.10	0.010.2617.3	4	screw m 12 p.1.5
560.20	04415796	4	oil seal 9.5x2
630	01122153	1	cover 42
660	0.010.2863.0	2	cover 30
700	01272647	1	stud bolt L = 13.7



CONTROL UNIT - WITH HYDRAULIC SHUTTLE

Fig.	P/n	QTY	Name
------	-----	-----	------

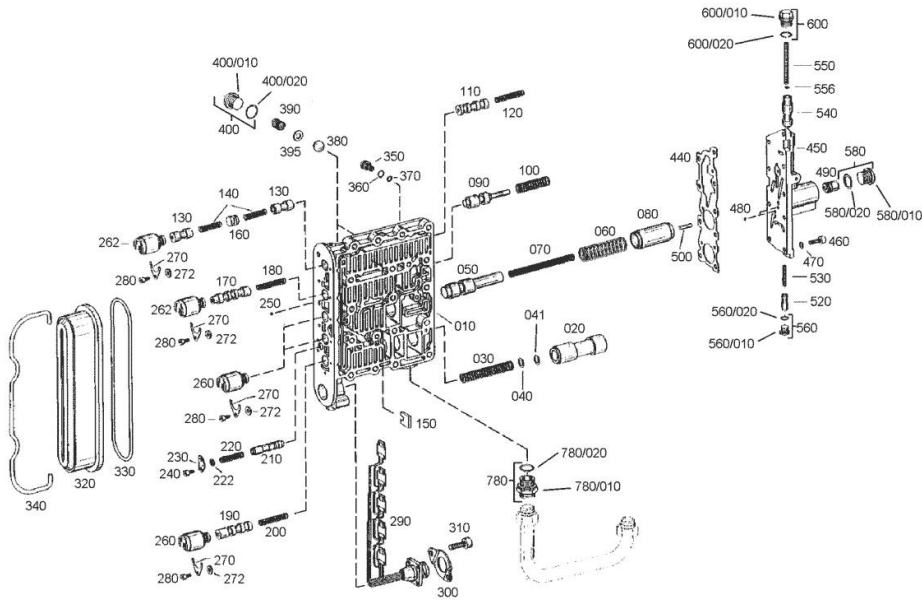
Notes:
[IRON 140 S]



10	04416824	1	spool valve
20	04423298	1	piston
30	04416657	1	spring
40	02371798	1	shim mm 10x16x0.2
40	04416658	1	shim mm 10x16x0.3
40	04416659	1	shim mm 10x16x0.4
40	04416660	1	shim mm 10x16x0.5
40	04416661	1	shim mm 10x16x1
41	04416661	3	shim mm 10x16x1
50	04416664	1	piston
60	04416665	1	spring
70	04416666	1	spring
80	04416825	1	piston
90	04417095	1	piston
100	04416669	1	spring
110	04416826	1	piston
120	04416671	1	spring
130	04423374	2	piston
140	04416828	2	spring
150	04416829	1	small plate
160	04416830	1	contact surface
170	04416831	1	piston
180	04416671	1	spring
190	04416833	1	piston
200	04416671	1	spring
210	04419156	1	valve
220	04416682	1	spring
222	04416832	1	ring
230	04419157	1	fan
240	04434505	2	screw m 5x10
250	04416684	10	ball
260	04416685	3	solenoid valve
262	04436315	2	solenoid valve
270	04416677	5	stop
272	04359458	5	washer mm 2.00
280	04434506	5	screw m 5 x 12
290	04416837	1	electrical system
300	04416687	1	plate
310	04434507	2	screw m 6 x 14
320	04416838	1	cover
330	04417233	1	ring 159.2x5.7

CONTROL UNIT - WITH HYDRAULIC SHUTTLE

Fig.	P/n	QTY	Name
340	04416690	1	bracket
350	04416691	1	diaphragm mm 0.8
350	04416692	1	diaphragm mm 0.75
350	04416693	1	diaphragm mm 0.7
360	04415683	1	oil seal 8x1.5
370	0.010.2618.1	1	oil seal 6x1.5
380	04416839	2	ball
390	04416942	2	spring
395	04416661	2	shim mm 10x16x1
400	0.000.0000.1	3	cannot be supplied
400.10	0.010.2618.2	3	screw m 18 p.1.5
400.20	02968175	3	oil seal 15x2
440	04416694	1	gasket
450	04416840	1	box
460	04434508	9	screw m 6 x 20
470	04416841	9	washer 6.4x12
480	04416684	5	ball
490	04416847	1	piston mm 20.5
490	04416848	1	piston mm 21.0
490	04416849	1	piston mm 21.5
490	04416850	1	piston mm 22.0
490	04417967	1	piston mm 22.5
490	04417968	1	piston mm 23.0
500	04416842	1	roller
520	04416843	1	piston
530	04416846	1	spring
540	04416844	1	piston
550	04416845	1	spring
556	04416851	1	shim 4x8x0.5
560	0.000.0000.1	1	cannot be supplied
560.10	0.010.2617.3	1	screw m 12 p.1.5
560.20	04415796	1	oil seal 9.5x2
580	0.000.0000.1	1	cannot be supplied
580.10	0.010.2619.0	1	screw m 20 p.1.5
580.20	0.010.2619.1	1	oil seal 17x2
600	0.000.0000.1	1	cannot be supplied
600.10	04416852	1	screw
600.20	02968175	1	oil seal 15x2
780	0.000.0000.1	1	cannot be supplied
780.10	04416944	1	vent
780.20	04416021	1	oil seal 27x2.5

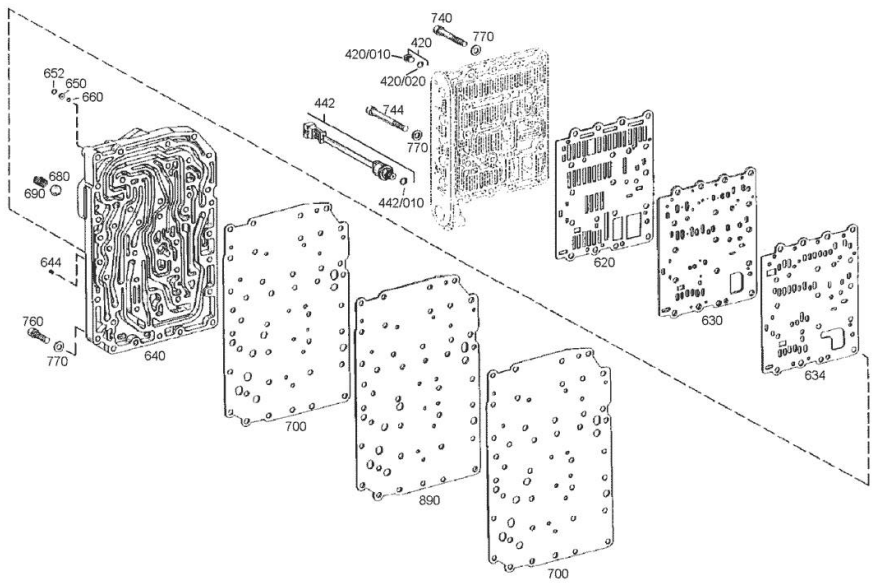


CONTROL UNIT - WITH HYDRAULIC SHUTTLE

Fig.	P/n	QTY	Name
------	-----	-----	------

Notes:
[IRON 140 S]

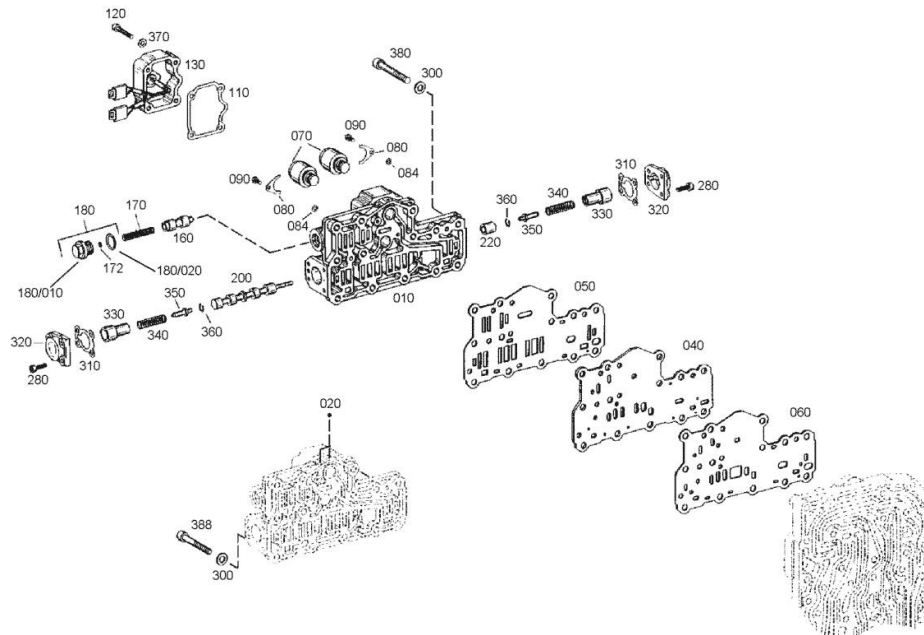
420	0.000.0000.1	11	cannot be supplied
420.10	04434512	11	plug m 10 p.1
420.20	04415683	11	oil seal 8x1.5
442	04431690	1	pressure switch
442.10	04415683	1	oil seal 8x1.5
620	04416853	1	gasket
630	0.010.2884.0	1	plate
634	04416855	1	gasket
640	0.900.0050.7	1	plate
644	04416857	1	diaphragm
650	04416858	1	washer
652	04416859	1	gasket 7x1.5
660	04416941	1	ball
680	04416839	1	ball
690	04416942	1	spring
700	04427608	2	gasket
740	04416701	16	screw m 8 x 65
744	04416702	1	screw m 8 x 90
760	04416703	10	screw m 8 x 32
770	04416940	27	washer 8.4
890	04427609	1	plate



Section: GEAR
HYDRAULIC CONTROL

Fig.	P/n	QTY	Name
------	-----	-----	------

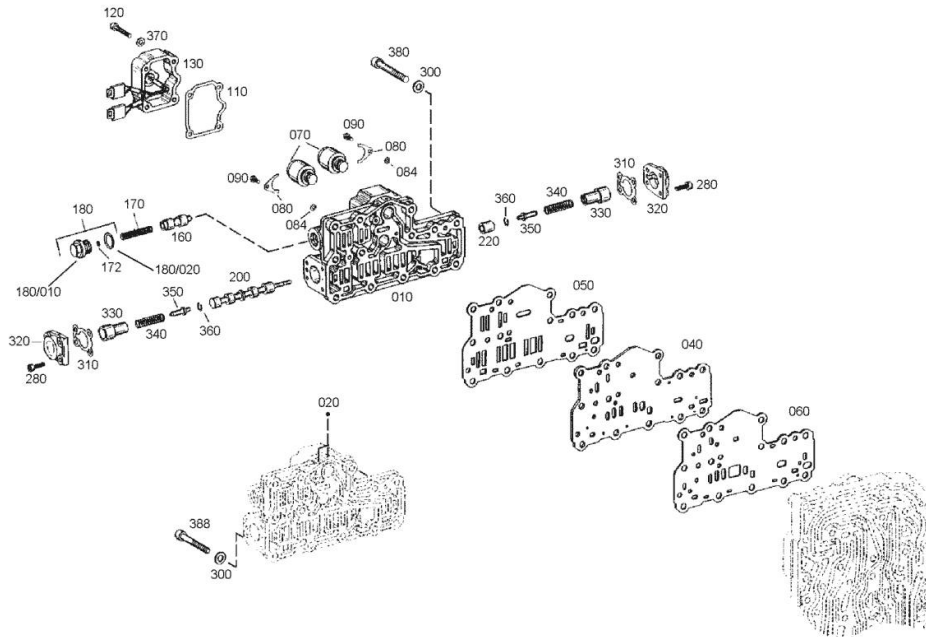
Notes:
 [IRON 140 S]



10	04435182	1	valve body
20	04416684	2	ball
40	04423365	1	plate
50	04416977	1	gasket
60	04416978	1	gasket
70	04416685	2	solenoid valve
80	04416677	2	stop
84	04359457	2	washer mm 1.00
90	04434506	2	screw m 5 x 12
110	0.900.0120.2	1	gasket -> (...)
110	04416980	1	gasket (...) <-
120	04434541	4	screw m 6 p.1 x 40
130	0.900.0122.4	1	electrical system -> (...)
130	04416986	1	small cover (...) <-
160	04416982	1	piston
170	04416983	1	spring
172	04424390	1	shim mm 0.5
172	04424403	1	shim mm 1.00
172	04424404	1	shim mm 1.50
172	04424405	1	shim mm 2.00
172	04424406	1	shim mm 2.50
172	04424407	1	shim mm 3.00
172	04424408	1	shim mm 3.50
172	04424409	1	shim mm 4.00
172	04424410	1	shim mm 4.50
172	04424411	1	shim mm 5.00
180	0.000.0000.1	1	cannot be supplied
180.10	04419225	1	screw
180.20	02968175	1	oil seal 15x2
200	04416984	1	piston
220	04416985	1	piston
280	04434508	8	screw m 6 x 20
300	04416940	13	washer 8.4
310	04416988	2	gasket
320	04416989	2	cover
330	04416990	2	piston
340	04416992	2	spring

Section: GEAR
HYDRAULIC CONTROL

Fig.	P/n	QTY	Name
350	04416993	2	piston
360	04416994	2	ring
370	0.900.0120.4	4	washer mm 6.40
380	04416701	12	screw m 8 x 65
388	04416987	1	screw M8x60



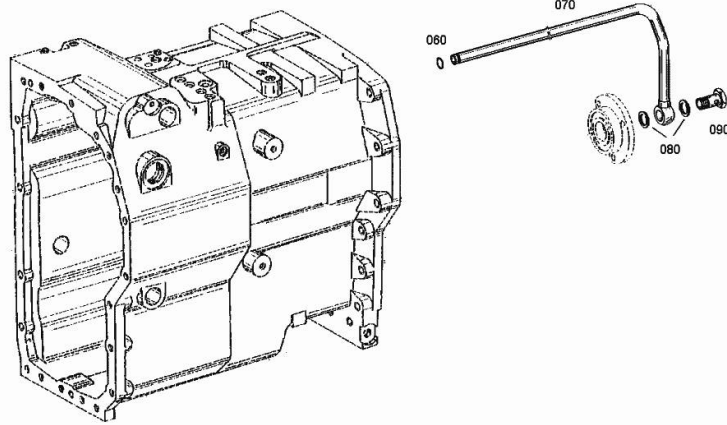
Section: GEAR

OIL SUPPLY

Fig.	P/n	QTY	Name
------	-----	-----	------

Notes:
[IRON 140 S]

60	02968175	1	oil seal 15x2
70	04415922	1	tube
80	0.010.2622.0	2	gasket 22 x 27
90	04415923	1	pipe union 18 DIN 7643

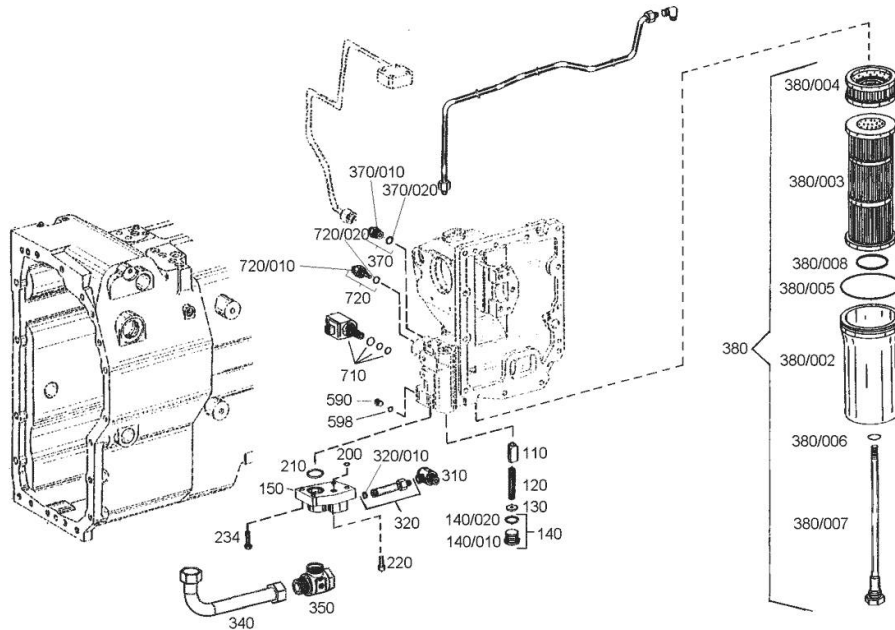


Section: GEAR

OIL SUPPLY - WITH HYDRAULIC SHUTTLE

Fig.	P/n	QTY	Name
------	-----	-----	------

Notes:
[IRON 140 S]



110	04415954	1	fuse
120	04415955	1	spring
130	04343603	1	washer mm 2.50
130	04343604	1	washer mm 2.75
130	04343605	1	washer mm 3.00
130	04344192	1	washer mm 3.25
130	04344193	1	washer mm 3.50
130	04344194	1	washer mm 3.75
130	04417005	1	washer mm 4.00
130	04417006	1	washer mm 0.20
130	04417007	1	washer mm 4.50
130	04417008	1	washer mm 4.75
140	0.000.0000.1	1	cannot be supplied
140.10	0.010.2622.1	1	screw m 26 p.1.5
140.20	04436328	1	oil seal 23x2
150	0.900.0050.8	1	flange
200	04329131	1	gasket 8x2.5
210	01272233	1	ring 30x3
220	04434551	1	screw m 8 p.1.25 x 20
234	04434509	3	screw m 8 x 30
310	04415957	1	screw
320	0.010.2877.1	1	tube
320.10	04415958	1	oil seal 10x2.5
340	0.010.3264.1	1	pipng
350	0.010.3842.1	1	threaded joint
370	0.000.0000.1	1	cannot be supplied
370.10	04417948	1	vent
370.20	04419216	1	oil seal 13x2
380	04415960.4	1	filter
380.2	0.010.3265.0	1	box
380.3	04417454	1	filter
380.4	04417835	1	filter
380.5	04417456	1	ring mm 112x3
380.6	04417457	1	oil seal mm 20x3
380.7	04417836	1	screw
380.8	0.010.3265.1	1	rubber ring
590	04434512	1	plug m 10 p.1
598	0.010.2878.1	1	gasket 10 x 16
710	04431661	1	solenoid valve
720	0.000.0000.1	1	cannot be supplied
720.10	04416649	1	sensor

Thank you so much for reading.
Please click the “Buy Now!”
button below to download the
complete manual.



After you pay.

You can download the most
perfect and complete manual in
the world immediately.

Our support email:

ebooklibonline@outlook.com