

Section: GEAR

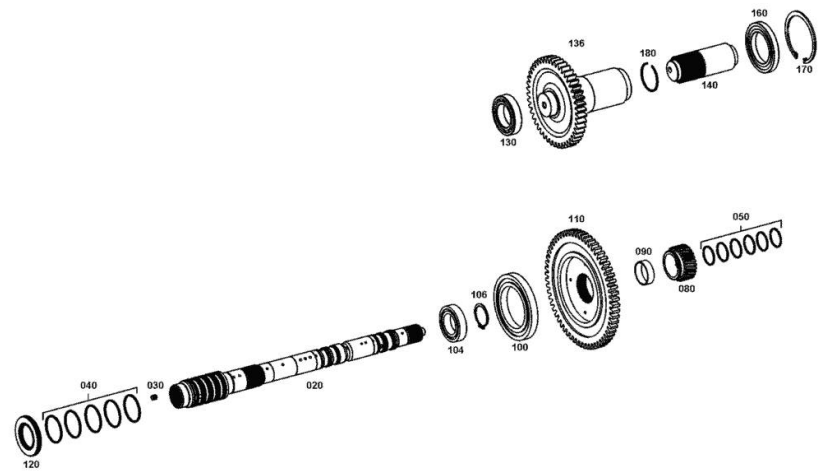
GEARBOX INPUT SHAFT

Fig.	P/n	QTY	Name
------	-----	-----	------

Notes:

[IRON 165.7 CONTINUO]

20	0.900.0482.4	1	shaft Z = 24
30	0.900.0120.7	4	plug
40	0.900.0387.4	5	ring
50	0.900.0387.5	6	ring
80	0.010.3765.1	1	crown wheel z = 33
90	0.010.3722.2	1	bush
100	0.900.0481.5	1	ball bearing
104	0.010.3729.1	1	ball bearing
106	0.010.3724.2	1	circlip 40 x 1.75
110	0.900.0482.3	1	gear z=61
120	0.010.3292.2	1	special oil seal
130	04415947	1	bearing
136	0.010.3766.0	1	gear Z = 46
140	0.010.3765.2	1	shaft Z = 38
160	0.010.3757.2	1	ball bearing
170	0.010.2610.0	1	circlip 95x3
180	0.010.3726.2	1	ring JV 50



Section: GEAR
HYDRAULIC CONTROL

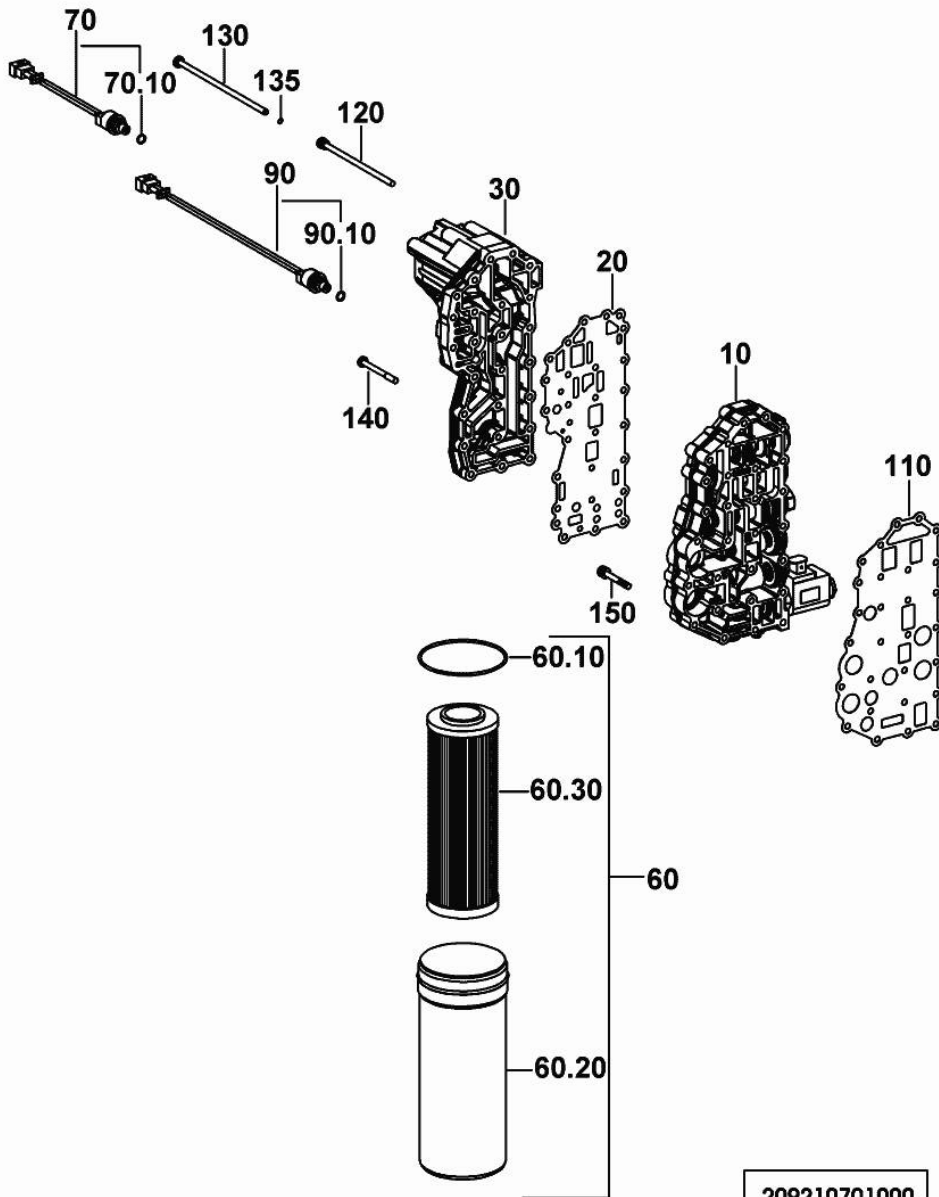
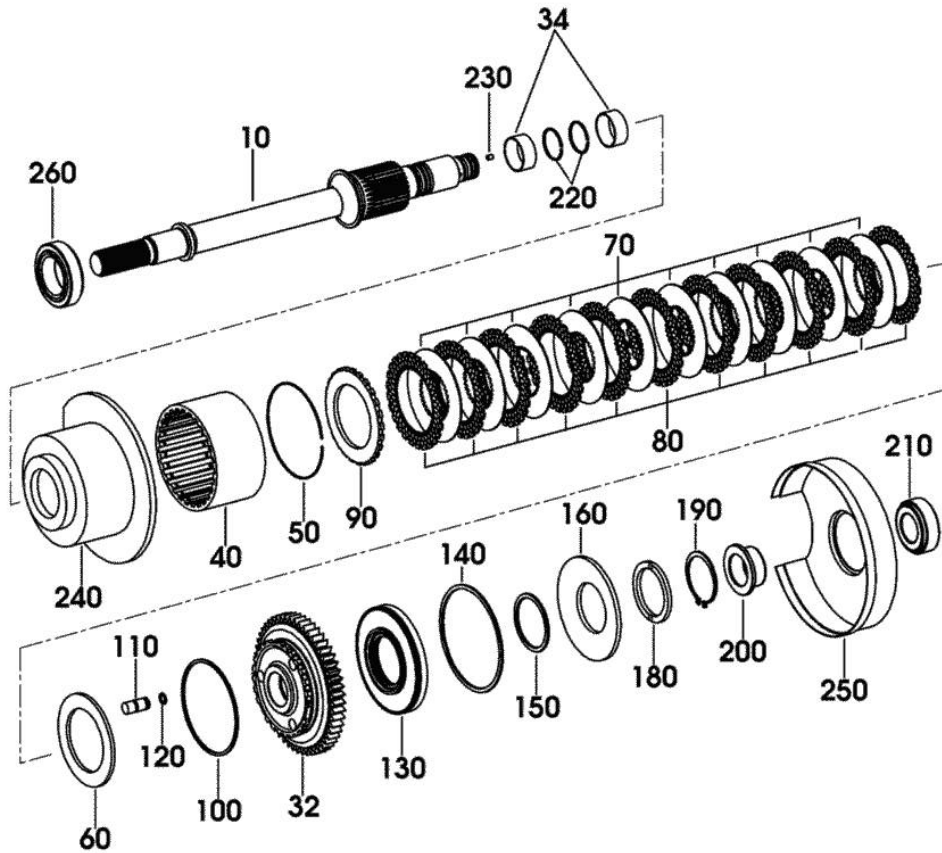


Fig.	P/n	QTY	Name
------	-----	-----	------

Notes:
 [IRON 165.7 CONTINUO]

10	0.010.3762.1	1	hydr. control
20	0.900.0500.7	1	gasket
30	0.900.0482.5	1	plate
60	0.010.3720.2	1	filter
60.10	0.010.3295.1	1	oil seal 94.92 x 2.62
60.20	0.010.3295.2	1	box
60.30	0.900.0462.8	1	filter
70	04416706	1	pressure switch
70.10	04415683	1	oil seal 8x1.5
90	0.010.3720.1	1	switch
90.10	04415683	1	oil seal 8x1.5
110	0.900.0466.6	1	gasket
120	0.010.3296.2	2	screw m 6x140
130	0.010.3755.0	2	screw m 6x175
135	0.010.3297.2	2	washer 6.4
140	0.010.3298.0	21	screw m 6 x 70
150	0.010.3298.1	3	screw m 6 x 50
160	0.010.3753.1	1	stop

Section: GEAR
FRONT TRANSMISSION



209214600101

Fig.	P/n	QTY	Name
------	-----	-----	------

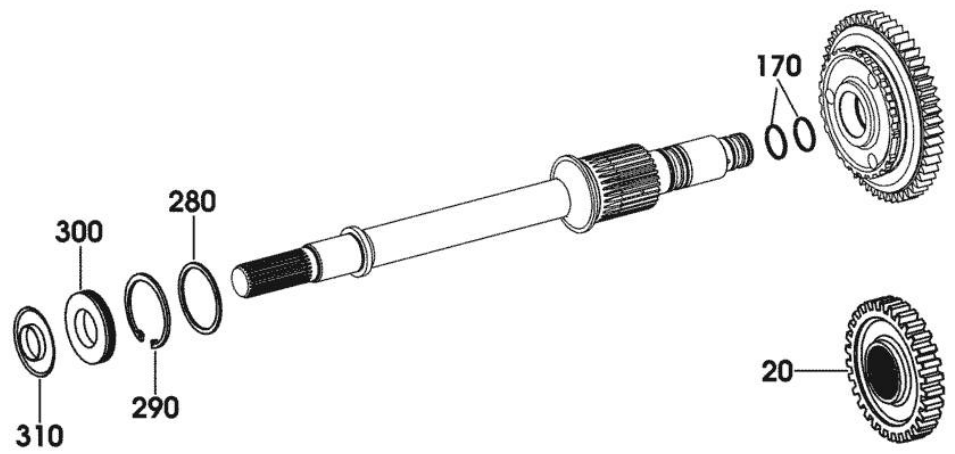
Notes:
 [IRON 165.7 CONTINUO]

10	0.010.3768.0	1	shaft Z = 32
32	0.010.3767.2	1	gear wheel z = 53
34	04434385	2	bushing
40	04416804	1	support z = 27
50	04415928	1	ring
60	0.010.2875.2	1	shim mm 7.3
60	04416588	1	shim mm 5.5
60	04416589	1	shim mm 5.7
60	04416590	1	shim mm 5.9
60	04416591	1	shim mm 6.1
60	04416592	1	shim mm 6.3
60	04416593	1	shim mm 6.5
60	04416594	1	shim mm 6.7
60	04416595	1	shim mm 6.9
60	04416596	1	shim mm 7.1
60	04416598	1	shim mm 7.5
60	04416599	1	shim mm 7.7
60	04416600	1	shim mm 7.9
60	04416601	1	shim mm 8.1
60	04416602	1	shim mm 8.3
60	04416603	1	shim mm 8.5
60	04416604	1	shim mm 8.7
70	04415930	10	disc
80	04416412	11	disc
90	04415932	1	disc
100	04415933	1	circlip mm 2.5
110	0.010.3767.1	3	pin
120	0.010.3258.2	3	oil seal 12x2.5
130	0.010.3767.0	1	piston
140	04328256	1	ring
150	04415937	1	ring
160	0.010.3723.0	1	spring
180	04436290	1	washer
190	0.010.2876.1	1	circlip 68x2.5
200	0.010.3768.1	1	bushing
210	0.010.3759.1	1	roller bearing
220	04415939	2	ring 45x2
230	04415944	1	screw m 6 x 8
240	04415945	1	plate
250	0.010.3766.2	1	plate
260	0.010.3256.1	1	roller bearing

Section: GEAR
FRONT TRANSMISSION

Fig.	P/n	QTY	Name
------	-----	-----	------

Notes:
 [IRON 165.7 CONTINUO]



20	0.010.3772.0	1	gear Z = 39
170	04415761	2	ring 35x2
280	0.010.3259.0	1	washer mm 2.00
280	0.010.3259.1	1	washer mm 2.05
280	0.010.3259.2	1	washer mm 2.10
280	0.010.3260.0	1	washer mm 2.15
280	0.010.3260.1	1	washer mm 2.25
280	0.010.3260.2	1	washer mm 2.35
280	0.010.3261.0	1	washer mm 2.45
280	0.010.3261.1	1	washer mm 2.55
280	0.010.3261.2	1	washer mm 2.65
280	04417009	1	washer mm 2.20
280	04417010	1	washer mm 2.30
280	04417011	1	washer mm 2.40
280	04417012	1	washer mm 2.50
280	04417013	1	washer mm 2.60
280	04417014	1	washer mm 2.70
280	04417015	1	washer mm 2.80
280	04424426	1	washer mm 2.90
280	04424427	1	washer mm 3.00
280	04424428	1	washer mm 3.10
280	04424429	1	washer mm 3.20
290	04415949	1	circlip 75x3
300	04415950	1	oil seal
310	04415951	1	plate

209214600102

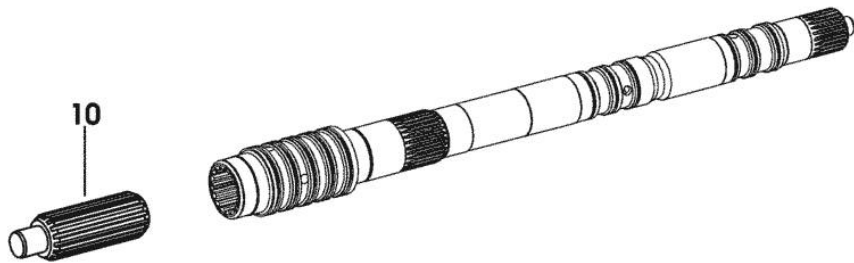
GEARBOX INPUT SHAFT

Fig.	P/n	QTY	Name
------	-----	-----	------

Notes:

[IRON 165.7 CONTINUO]

10	0.010.3291.1	1	shaft
----	--------------	---	-------



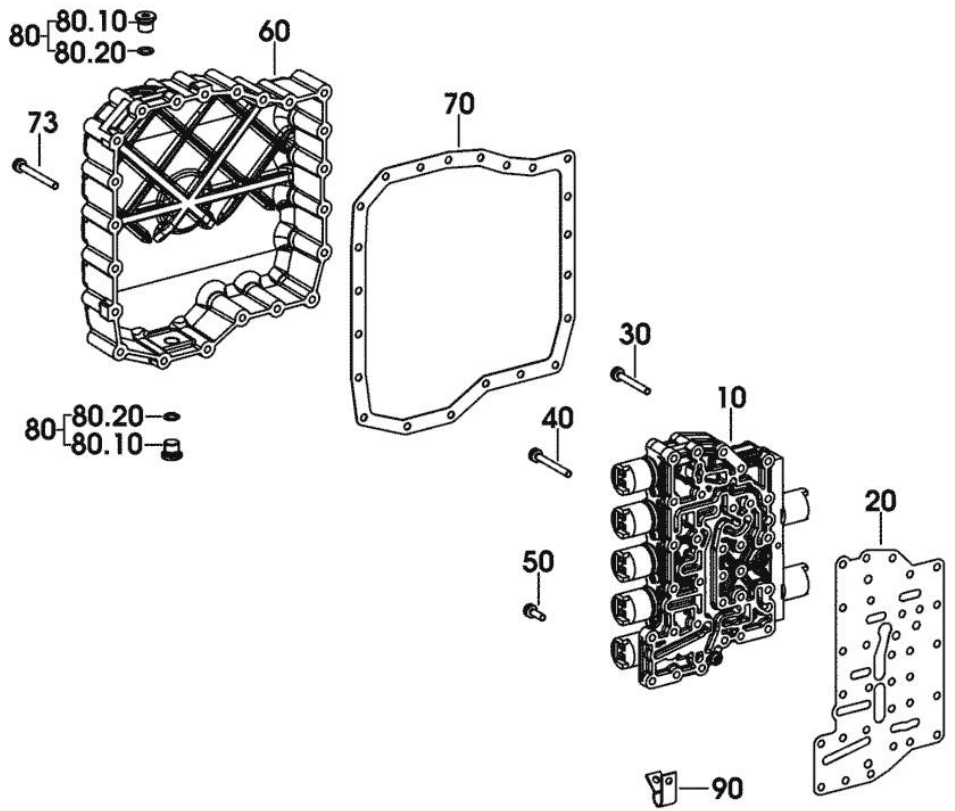
209214900100

Section: GEAR
HYDRAULIC CONTROL

Fig.	P/n	QTY	Name
------	-----	-----	------

Notes:
 [IRON 165.7 CONTINUO]

10	0.010.3762.2	1	hydr. control
20	0.010.3300.2	1	gasket
30	0.010.3298.1	27	screw m 6 x 50
40	0.010.3301.0	2	screw m 6 x 55
50	0.010.3301.1	2	screw m 6 x 20
60	0.900.0302.5	1	cap
70	0.900.0302.6	1	gasket
73	0.010.3755.1	11	screw m 6 x 60
80	0.000.0000.1		cannot be supplied
80.10	0.000.0000.1		cannot be supplied
80.20	0.000.0000.1		cannot be supplied
90	0.010.3774.0	1	clamp



209215200400

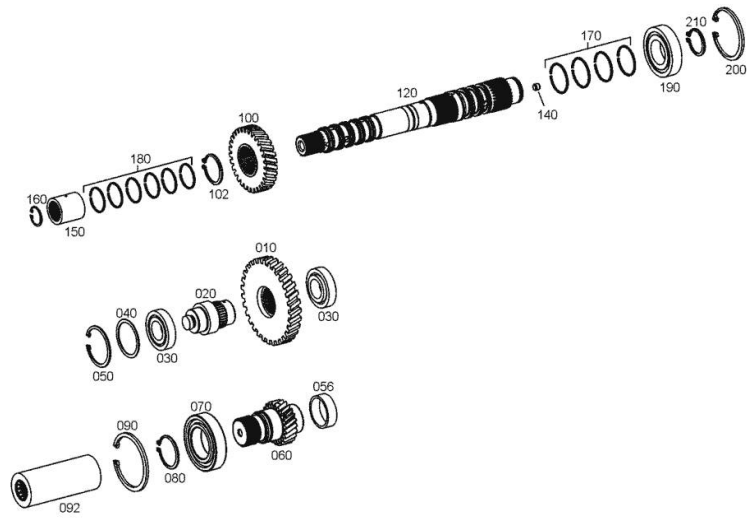
Section: GEAR

GEARBOX INPUT SHAFT

Fig.	P/n	QTY	Name
------	-----	-----	------

Notes:

[IRON 165.7 CONTINUO]



10	0.010.3770.1	1	gear Z = 49
20	0.010.3769.0	1	axle
30	04416950	2	bearing
40	0.010.2611.0	1	shim mm 1.72
40	0.010.2611.1	1	shim mm 1.74
40	0.010.2611.2	1	shim mm 1.76
40	0.010.2612.0	1	shim mm 1.78
40	0.010.2612.1	1	shim mm 1.82
40	0.010.2612.2	1	shim mm 1.84
40	0.010.2612.3	1	shim mm 1.86
40	0.010.2613.0	1	shim mm 1.88
40	0.010.2613.1	1	shim mm 1.92
40	0.010.2613.2	1	shim mm 1.94
40	0.010.2613.3	1	shim mm 1.96
40	0.010.2614.0	1	shim mm 1.98
40	0.010.2614.1	1	shim mm 2.02
40	0.010.2614.2	1	shim mm 2.04
40	0.010.2614.3	1	shim mm 2.06
40	0.900.0014.7	1	shim mm 2.08
40	0.900.0014.8	1	shim mm 1.05
40	0.900.0014.9	1	shim mm 1.10
40	0.900.0015.0	1	shim mm 1.15
40	04416454	1	shim mm 1.30
40	04416455	1	shim mm 1.70
40	04416456	1	shim mm 1.90
40	04416457	1	shim mm 2.10
40	04416458	1	shim mm 2.30
40	04416459	1	shim mm 1.20
40	04416460	1	shim mm 1.25
40	04416461	1	shim mm 1.35
40	04416462	1	shim mm 1.40
40	04416463	1	shim mm 1.45
40	04416470	1	shim mm 1.55
40	04416471	1	shim mm 1.60
40	04416472	1	shim mm 1.65
40	04416473	1	shim mm 1.75
40	04416474	1	shim mm 1.80
40	04416475	1	shim mm 1.85
40	04416476	1	shim mm 1.95
40	04416477	1	shim mm 2.00
40	04416478	1	shim mm 2.05

Section: GEAR

GEARBOX INPUT SHAFT

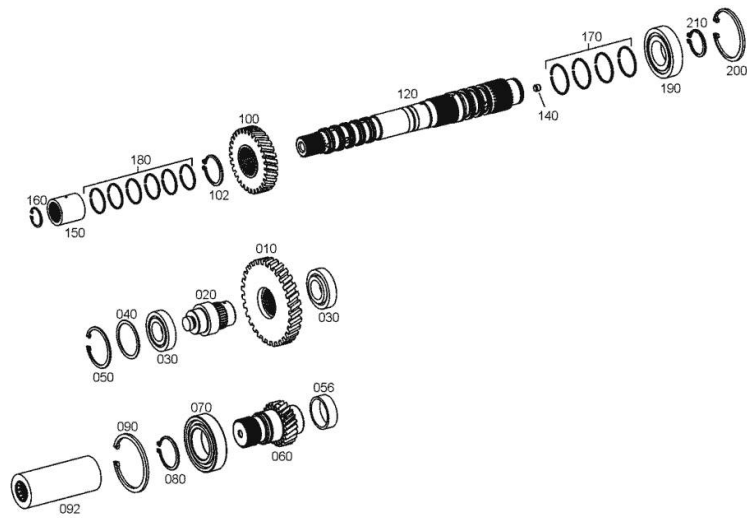


Fig.	P/n	QTY	Name
40	04416479	1	shim mm 2.15
40	04416480	1	shim mm 2.20
40	04416481	1	shim mm 2.25
40	04416482	1	shim mm 2.35
40	04416483	1	shim mm 2.40
40	04416484	1	shim mm 2.45
40	04416485	1	shim mm 2.50
40	04416620	1	shim mm 1.50
50	0.010.3725.2	1	washer 63x2
56	0.010.3729.0	1	special bushing
60	0.010.3770.0	1	gear Z = 34
70	04416403	1	ball bearing
80	0.900.0289.9	1	circlip 50x3
90	0.010.3727.1	1	circlip 90x4
92	0.010.3769.2	1	shaft Z = 34
100	0.010.3770.2	1	gear Z = 36
102	0.900.0289.8	1	circlip 45x2.5
120	0.900.0482.6	1	shaft Z = 24
140	0.900.0479.8	3	stud bolt
150	0.010.3769.1	1	bush Z = 24
160	0.010.3725.1	1	circlip 30x1.5
160	0.010.3726.0	1	circlip 30x1.10
160	0.010.3727.0	1	circlip 30x2
160	0.010.3759.2	1	circlip S = 1.3
160	0.010.3760.0	1	circlip S = 1.70
170	04415985	4	ring 48x2
180	04416364	7	ring 40x2
190	0.010.3757.1	1	ball bearing
200	0.900.0289.3	1	circlip 80 x 4
210	0.010.2876.2	1	circlip 40x2.5

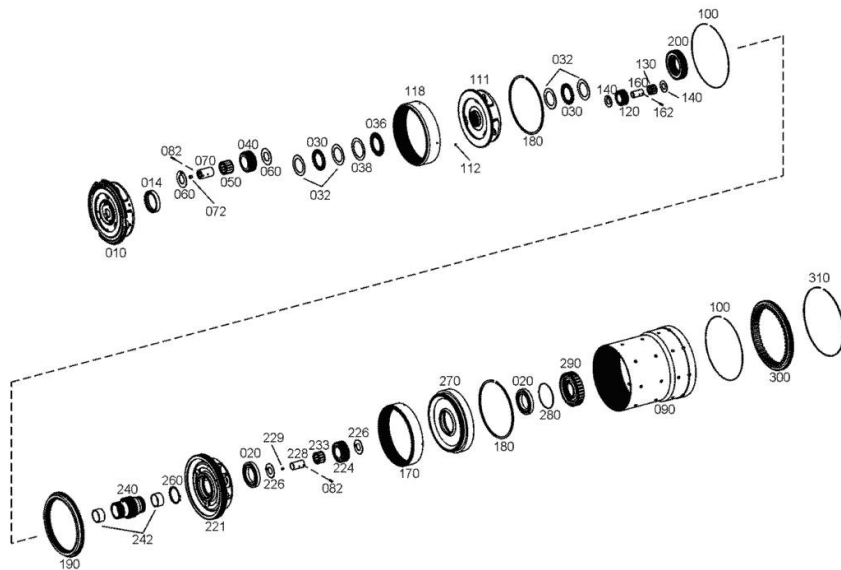
Section: GEAR

MAIN GEARBOX

Fig.	P/n	QTY	Name
------	-----	-----	------

Notes:

[IRON 165.7 CONTINUO]



10	0.900.0483.9	1	spider Z = 102
14	0.900.0468.9	1	bush
20	0.010.3758.0	2	ball bearing
30	0.900.0468.8	2	thrust bearing
32	0.900.0468.7	4	disc 46x65x1
36	0.900.0498.3	1	ball bearing
38	0.900.0474.2	1	disc Ø 51.8, 70x10
40	0.900.0483.0	3	planet gear Z = 32
50	0.900.0479.9	3	roller bearing
60	0.900.0463.3	6	washer
70	0.900.0463.8	3	pin
72	04416947	3	grub screw m 8x8
82	0.900.0467.8	6	roll pin 3 x 16
90	0.900.0465.7	1	tube
100	0.900.0467.2	2	circlip 205
111	0.900.0484.0	1	spider Z = 99
112	04416684	4	ball
118	0.900.0483.1	1	crown wheel Z = 99
120	0.900.0483.7	4	planet gear Z = 23
130	0.900.0480.0	4	roller bearing
140	0.900.0464.2	8	slewing ring
160	0.900.0463.5	4	pin
162	0.900.0467.9	4	roll pin 4x14
170	0.900.0482.9	1	crown wheel Z = 99
180	0.010.3760.1	2	circlip s = 2.2
190	0.900.0482.7	1	crown wheel Z=96
200	0.900.0483.8	1	gear Z = 48
221	0.900.0484.1	1	spider Z = 102
224	0.900.0482.8	3	planet gear Z = 32
226	0.900.0483.2	6	lock-tab
228	0.900.0463.9	3	pin
229	0.900.0468.0	3	stud bolt m 5x6
233	0.900.0480.1	3	crown wheel
240	0.900.0483.6	1	gear z=38
242	0.900.0464.3	2	bush
260	0.010.3345.1	1	circlip 50x2
270	0.900.0483.3	1	support
280	0.010.3726.1	1	circlip SB 80
290	0.900.0483.4	1	support
300	0.900.0483.5	1	support
310	0.900.0467.3	1	circlip SB 220

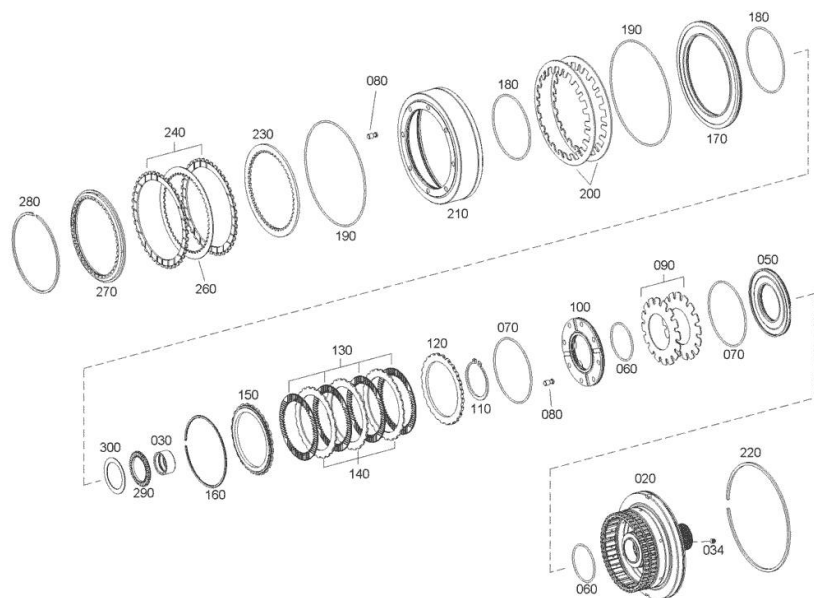
Section: GEAR

CLUTCH

Fig.	P/n	QTY	Name
------	-----	-----	------

Notes:

[IRON 165.7 CONTINUO]



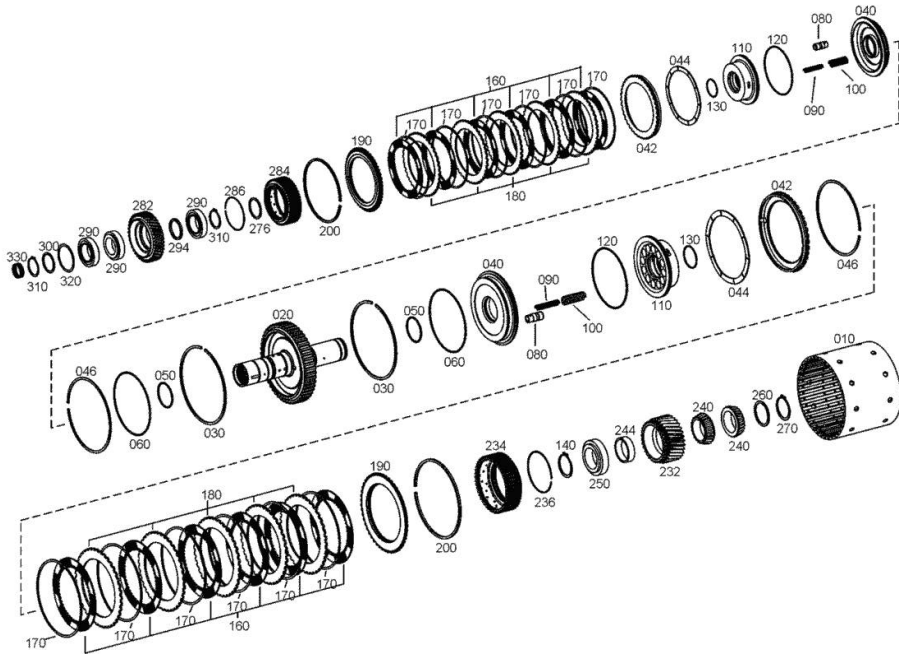
20	0.900.0484.8	1	cylinder
30	0.900.0464.4	1	bush
34	04416947	1	grub screw m 8x8
50	0.900.0484.3	1	piston
60	0.900.0480.8	2	ring
70	0.900.0480.9	2	ring
80	0.900.0484.2	16	pin
90	0.900.0463.6	2	spring
100	0.900.0484.6	1	piston
110	0.010.2876.1	1	circlip 68x2.5
120	0.900.0484.7	1	disc
130	0.900.0462.6	4	disc
140	0.900.0481.7	3	disc
150	0.900.0484.9	1	disc
160	0.900.0478.1	1	circlip S=2,20
160	0.900.0478.2	1	circlip S=2,40
160	0.900.0478.3	1	circlip S=2,60
160	0.900.0478.4	1	circlip S=2,80
160	0.900.0478.5	1	circlip S=3,00
160	0.900.0478.6	1	circlip S=3,20
160	0.900.0478.7	1	circlip S=3,40
170	0.900.0484.4	1	piston
180	0.900.0481.0	2	oil seal
190	0.900.0481.2	2	oil seal
200	0.900.0463.7	2	spring
210	0.900.0485.1	1	cylinder HLB 22
210	0.900.0485.2	1	cylinder 42CRMO4
220	0.900.0467.1	1	circlip 210
230	0.900.0484.5	1	disc
240	0.900.0462.7	2	disc
260	0.900.0463.4	1	disc
270	0.900.0485.3	1	disc Z = 50
280	0.900.0498.8	1	circlip mm 0.041
280	0.900.0498.9	1	circlip mm 0.038
280	0.900.0499.0	1	circlip mm 0.033
280	0.900.0499.1	1	circlip mm 0.055
280	0.900.0499.2	1	circlip mm 0.051
280	0.900.0499.3	1	circlip mm 0.046
290	0.900.0498.3	1	ball bearing
300	0.900.0474.2	1	disc Ø 51.8, 70x10

Section: GEAR
CLUTCH

Fig.	P/n	QTY	Name
------	-----	-----	------

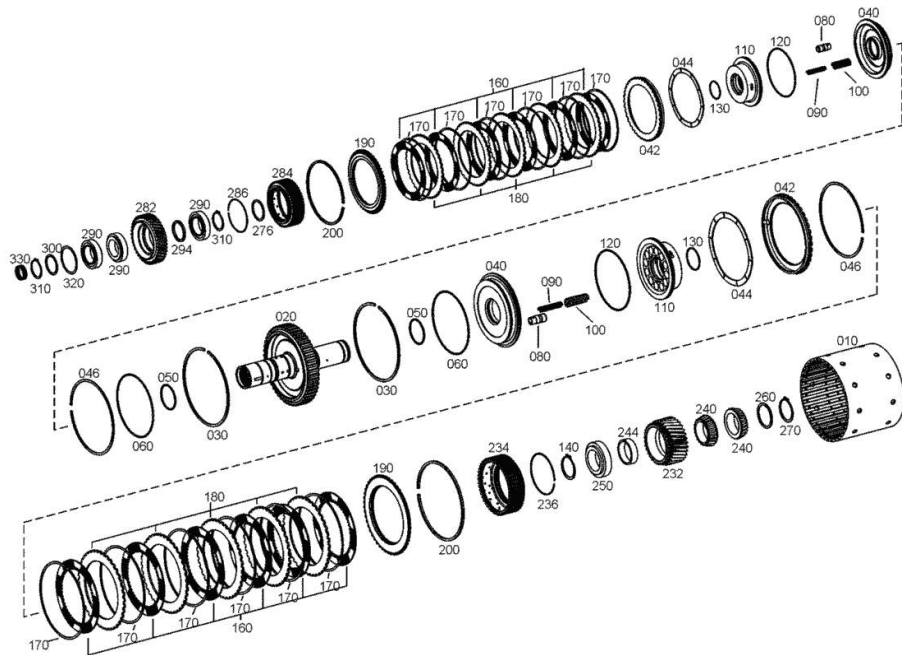
Notes:
[IRON 165.7 CONTINUO]

10	0.900.0486.5	1	support Z = 50
20	0.900.0486.3	1	shaft Z = 50
30	0.900.0465.6	2	circlip
40	0.900.0485.9	2	piston
42	0.900.0486.0	2	block Z = 50
44	0.900.0464.1	2	spring
46	0.900.0478.8	2	circlip S=2,00
50	0.900.0481.3	2	oil seal
60	0.900.0481.1	2	oil seal
80	0.900.0485.5	6	piston
90	04431765	24	spring
100	0.010.3420.1	18	spring
110	0.900.0485.6	2	piston ring
120	0.900.0481.4	2	oil seal
130	0.900.0467.0	2	circlip 58
140	0.900.0477.9	2	circlip
160	0.900.0463.0	12	disc
170	0.900.0464.0	12	spring washer
180	0.900.0485.7	10	disc A=3.80
190	0.900.0486.4	2	disc Z = 50
200	0.900.0499.4	4	circlip mm 0.060
200	0.900.0499.5	4	circlip mm 0.070
200	0.900.0499.6	4	circlip mm 0.075
200	0.900.0499.7	4	circlip mm 0.075
200	0.900.0499.8	4	circlip mm 0.080
200	0.900.0499.9	4	circlip mm 0.085
200	0.900.0500.0	4	circlip mm 0.090
200	0.900.0500.1	4	circlip mm 0.095
200	0.900.0500.2	4	circlip mm 0.100
200	0.900.0500.3	4	circlip mm 0.110
232	0.900.0485.4	1	gear Z = 31
234	0.900.0485.8	1	support Z = 48
236	0.900.0467.4	1	circlip 107
240	0.900.0480.3	2	roller bearing
244	0.900.0474.5	1	spacer S=17,20
244	0.900.0474.6	1	spacer S=17,24
244	0.900.0474.7	1	spacer S=17,28
244	0.900.0474.8	1	spacer S=17,32
244	0.900.0474.9	1	spacer S=17,36
244	0.900.0475.0	1	spacer S=17,40
244	0.900.0475.1	1	spacer S=17,44



Section: GEAR
CLUTCH

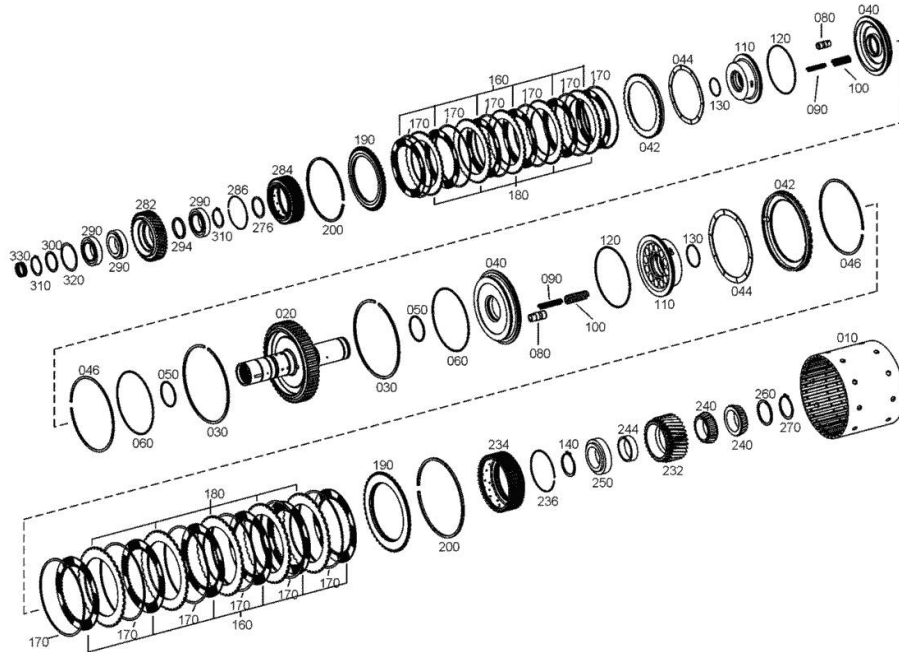
Fig.	P/n	QTY	Name
244	0.900.0475.2	1	washer S=17,48
244	0.900.0475.3	1	spacer S=17,52
244	0.900.0475.4	1	spacer S=17,56
244	0.900.0475.5	1	spacer S=17,60
244	0.900.0477.1	1	spacer S=17,64
244	0.900.0477.2	1	spacer S=17,68
244	0.900.0477.3	1	spacer S=17,72
244	0.900.0477.4	1	spacer S=17,76
244	0.900.0477.5	1	spacer S=17,80
244	0.900.0477.6	1	spacer S=17,84
244	0.900.0477.7	1	spacer S=17,88
250	0.900.0480.4	1	roller bearing
260	0.900.0470.6	1	shim S=1,00
260	0.900.0470.7	1	shim S=1,10
260	0.900.0470.8	1	shim S=1,20
260	0.900.0470.9	1	shim S=1,30
260	0.900.0471.0	1	shim S=1,40
260	0.900.0471.1	1	shim S=1,5
260	0.900.0471.2	1	shim S=1,6
260	0.900.0471.3	1	shim S=1,70
260	0.900.0471.4	1	shim S=1,80
260	0.900.0471.5	1	shim S=2,00
260	0.900.0471.6	1	shim S=1,05
260	0.900.0471.7	1	shim S=1,15
260	0.900.0471.8	1	shim S=1,25
260	0.900.0471.9	1	shim S=1,35
260	0.900.0472.0	1	shim S=1,45
260	0.900.0472.1	1	shim S=1,55
260	0.900.0472.2	1	shim S=1,65
260	0.900.0472.3	1	shim S=1,75
260	0.900.0472.4	1	shim S=1,85
260	0.900.0472.5	1	shim S=1,90
270	0.900.0477.8	1	circlip 55 x 2.0
276	0.900.0472.6	1	washer S=2,65
282	0.900.0486.1	1	gear z=39
284	0.900.0486.2	1	support Z = 48
286	0.900.0467.5	1	circlip 118
290	0.900.0481.6	3	roller bearing
294	0.900.0475.6	1	spacer S=5,48
294	0.900.0475.7	1	spacer S=5,43
294	0.900.0475.8	1	spacer S=5,38
294	0.900.0475.9	1	spacer S=5,33
294	0.900.0476.0	1	spacer S=5,28
294	0.900.0476.1	1	spacer S=5,23



Section: GEAR

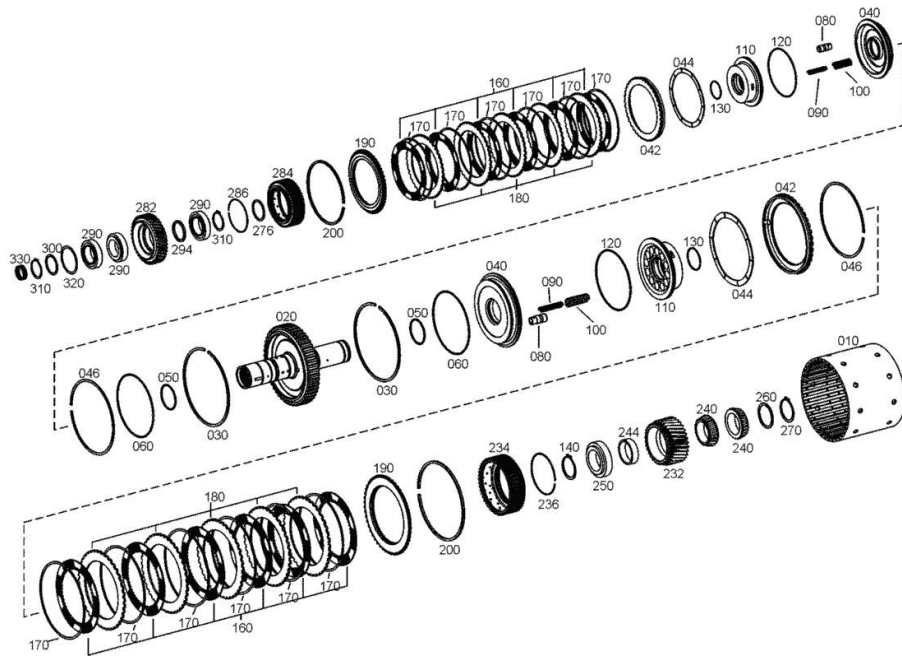
CLUTCH

Fig.	P/n	QTY	Name
294	0.900.0476.2	1	spacer S=5,18
294	0.900.0476.3	1	spacer S=5,13
294	0.900.0476.4	1	spacer S=5,08
294	0.900.0476.5	1	spacer S=5,03
294	0.900.0476.6	1	spacer S=4,98
294	0.900.0476.7	1	spacer S=4,93
294	0.900.0476.8	1	spacer S=4,88
294	0.900.0476.9	1	spacer S=4,83
294	0.900.0477.0	1	spacer S=4,78
300	0.900.0472.6	1	washer S=2,65
300	0.900.0472.7	1	washer S=2,60
300	0.900.0472.8	1	washer S=2,55
300	0.900.0472.9	1	washer S=2,50
300	0.900.0473.0	1	washer S=2,45
300	0.900.0473.1	1	washer S=2,40
300	0.900.0473.2	1	washer S=2,35
300	0.900.0473.3	1	washer S=2,30
300	0.900.0473.4	1	washer S=2,25
300	0.900.0473.5	1	washer S=2,20
300	0.900.0473.6	1	washer S=2,15
300	0.900.0473.7	1	washer S=2,10
300	0.900.0473.8	1	washer S=2,05
300	0.900.0473.9	1	washer S=2,00
310	0.900.0477.9	2	circlip
320	0.010.3741.2	1	disc s = 2.50
320	0.010.3742.0	1	disc s = 2.45
320	0.010.3742.1	1	disc s = 2.40
320	0.010.3742.2	1	disc s = 2.35
320	0.010.3743.0	1	disc s = 2.30
320	0.010.3743.1	1	disc s = 2.25
320	0.010.3743.2	1	disc s = 2.20
320	0.010.3744.0	1	disc s = 2.15
320	0.010.3744.1	1	disc s = 2.10
320	0.010.3744.2	1	disc s = 2.05
320	0.010.3745.0	1	disc S = 2.00
320	0.010.3745.1	1	disc S = 1.95
320	0.010.3745.2	1	disc S = 1.90
320	0.010.3746.0	1	disc S = 1.85
320	0.010.3746.1	1	disc S = 1.80
320	0.010.3746.2	1	disc S = 1.75
320	0.010.3747.0	1	disc S = 1.70
320	0.010.3747.1	1	disc S = 1.65
320	0.010.3747.2	1	disc S = 1.60
320	0.010.3748.0	1	disc S = 1.55



Section: GEAR
CLUTCH

Fig.	P/n	QTY	Name
320	0.010.3748.1	1	disc S = 1.50
330	04434227	1	roller bearing



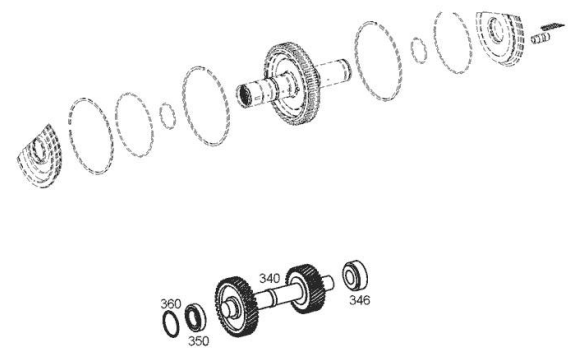
Section: GEAR

CLUTCH

Fig.	P/n	QTY	Name
------	-----	-----	------

Notes:
[IRON 165.7 CONTINUO]

340	0.010.3771.0	1	wheel z = 40
346	0.010.3754.2	1	roller bearing
350	0.010.3759.0	1	roller bearing
360	0.010.3736.1	1	shim A = 1.2
360	0.010.3736.2	1	shim A = 1.25
360	0.010.3737.0	1	shim A = 1.3
360	0.010.3737.1	1	shim A = 1.35
360	0.010.3737.2	1	shim A = 1.4
360	0.010.3738.0	1	shim A = 1.45
360	0.010.3738.1	1	shim A = 1.50
360	0.010.3738.2	1	shim A = 1.55
360	0.010.3739.0	1	shim A = 1.6
360	0.010.3739.1	1	shim A = 1.65
360	0.010.3739.2	1	shim A = 1.70
360	0.010.3740.0	1	shim A = 1.75
360	0.010.3740.1	1	shim A = 1.8
360	0.010.3740.2	1	shim A = 1.85
360	0.010.3741.0	1	shim A = 1.90
360	0.010.3741.1	1	shim A = 1.95



Thank you so much for reading.
Please click the “Buy Now!”
button below to download the
complete manual.



After you pay.

You can download the most
perfect and complete manual in
the world immediately.

Our support email:

ebooklibonline@outlook.com