

DIFFERENTIAL - 2097 004 010

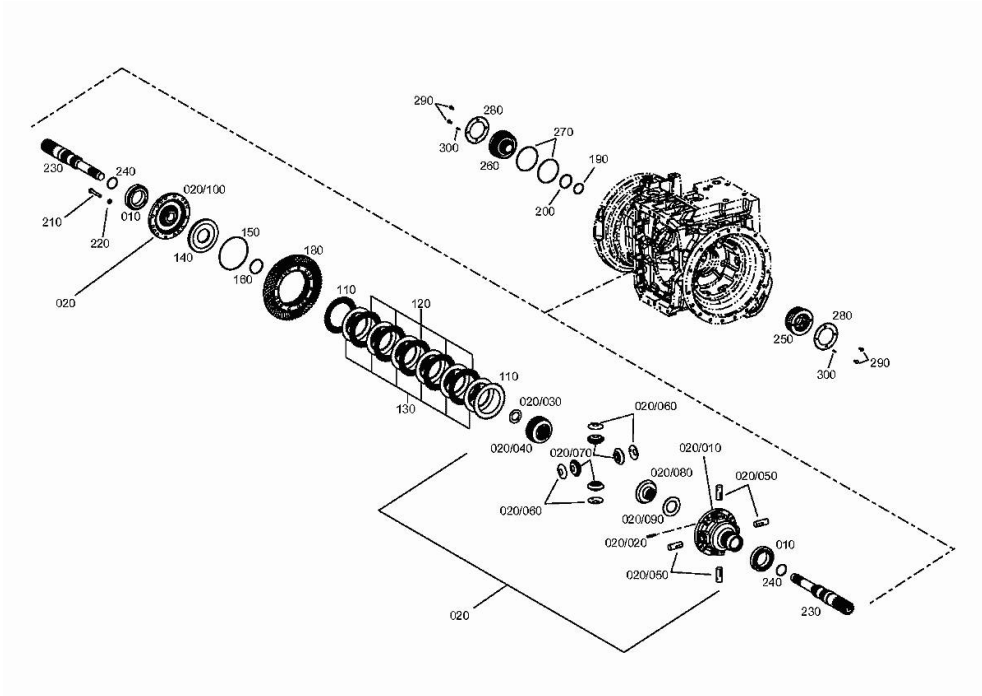


Fig.	P/n	QTY	Name
10	0.010.3580.1	2	roller bearing
20	0.900.1391.0	1	differential carrier
20.10	0.900.1234.7	1	box
20.20	0.010.2888.2	4	pin 8 x 50
20.30	0.900.0124.0	1	slewing ring
20.40	0.010.2942.2	1	crown wheel
20.50	0.010.2890.1	4	pin
20.60	0.010.3845.2	4	slewing ring
20.70	0.010.3846.0	4	planet gear
20.80	0.010.2891.1	1	crown wheel Z = 18
20.90	0.900.0124.3	1	slewing ring
20.100	0.900.1234.9	1	cover
110	0.900.1377.4	2	disc Z = 46
120	0.900.1226.8	5	disc Z = 46
130	0.900.1377.2	6	disc Z = 41
140	0.900.0123.6	1	piston
150	0.900.0451.5	1	oil seal
160	0.900.0268.5	1	oil seal 69 x 3
180	0.900.1235.0	1	crown wheel
190	0.900.0800.7	1	ring 55 x 2.5
200	0.900.0800.8	1	ring 70 x 3.0
210	0.010.3729.2	16	screw m 12 x 80
220	0.900.0277.9	16	washer
230	0.900.1235.1	2	pinion
240	0.010.2970.1	2	gasket
250	04428944	1	register
260	04428945	1	register
270	0.900.0278.7	2	ring
280	04417449	2	plate
290	04435695	4	screw m 8 x 16
300	04435703	2	pin 5 x 20

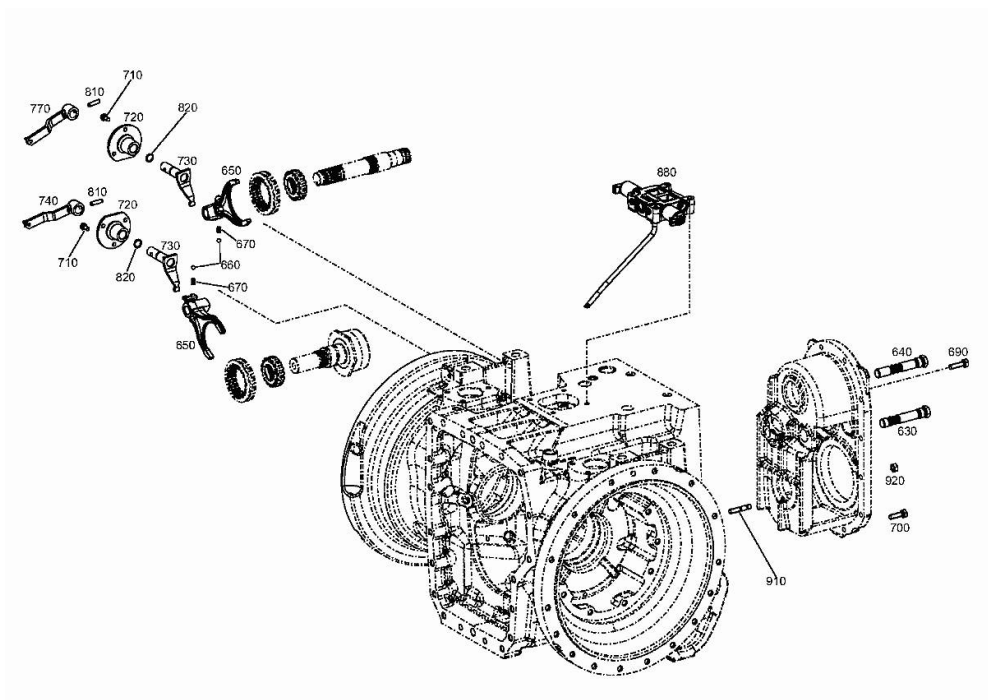
IRON 190 CONTINUO DCR -> 10001

Section: D0 - TRANSMISSION

Ref: 0.018.0125.4

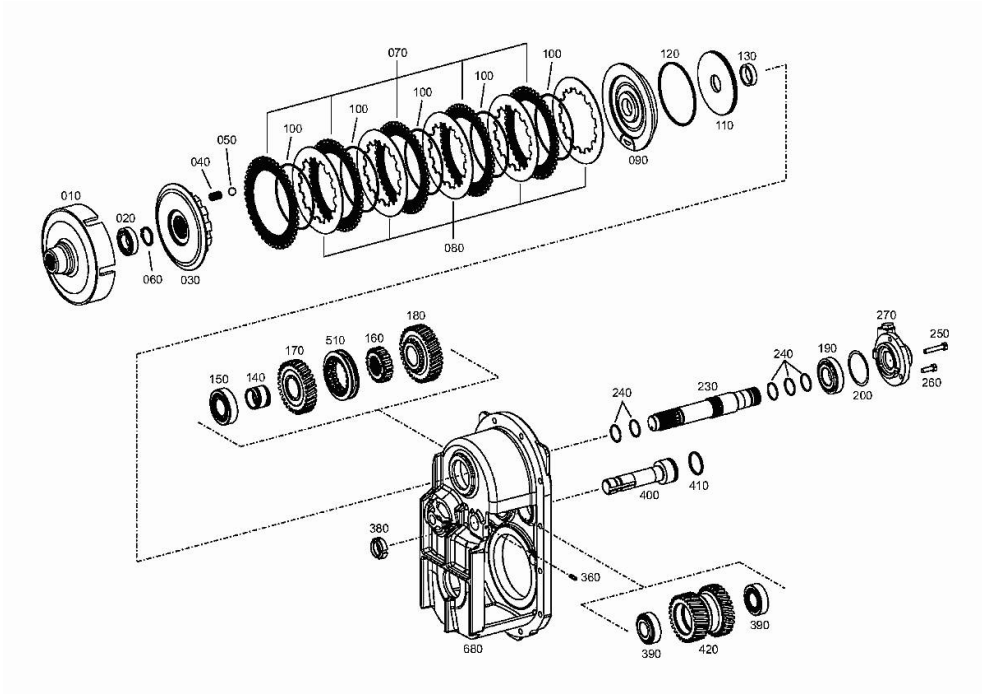
P.T.O. - POWER TAKE OFF - 2097 004 010

Fig.	P/n	QTY	Name
630	0.900.1432.6	1	rod
640	0.900.1432.7	1	rod
650	0.010.3848.1	2	fork
660	04415909	2	ball
670	04417378	2	spring
680	04423799	1	box
690	0.010.2893.2	1	screw m 10 x 40
700	04434540	9	screw m 10 x 35
710	04435695	6	screw m 8 x 16
720	04417692	2	bearing
730	04417693	2	pin
740	0.900.0122.9	1	lever
770	04413418	1	lever
810	0.010.2894.1	2	pin 8 x 30
820	0.900.0278.8	2	oil seal
880	0.900.1235.9	1	spool valve
910	0.900.0281.2	2	stud bolt m 10 x 45



P.T.O. - POWER TAKE OFF - 2097 004 010

Fig.	P/n	QTY	Name
10	0.900.0124.5	1	clutch housing Z = 46
20	0.900.0469.0	1	ball bearing
30	0.900.0802.8	1	adapter
40	04417631	8	spring
50	04417632	8	ball
60	0.900.0467.7	1	circlip 34x2.5
70	0.900.1377.3	5	disc Z = 46
80	0.900.1226.7	5	disc
90	0.900.1235.2	1	cylinder
100	0.900.1431.4	5	spring
110	0.900.1235.3	1	piston
120	0.900.0468.4	1	oil seal 120x3
130	04417638	1	shoulder ring
140	04417639	1	special bushing
150	0.900.1385.1	1	bearing
160	04417641	1	support
170	0.900.1235.4	1	gear
180	04436292	1	gear Z = 35
190	0.900.1385.0	1	bearing
200	04417360	1	shim s = 0.10
200	04417361	1	shim s = 0.15
200	04417362	1	shim s = 0.40
230	0.900.1235.5	1	shaft
240	04423359	5	ring
250	0.900.0280.0	1	screw m 8 x 45
260	04434498	2	screw m 8 x 25
270	0.900.1235.6	1	cover
360	04433234	2	roll pin 6x20
380	04424372	1	ring nut
390	04431639	2	bearing
400	04417656	1	pin
410	0.900.0468.6	1	oil seal 40x3
420	0.900.1235.7	1	gear
510	04431727	2	sleeve
680	04423799	1	box



P.T.O. - POWER TAKE OFF - 2097 004 010

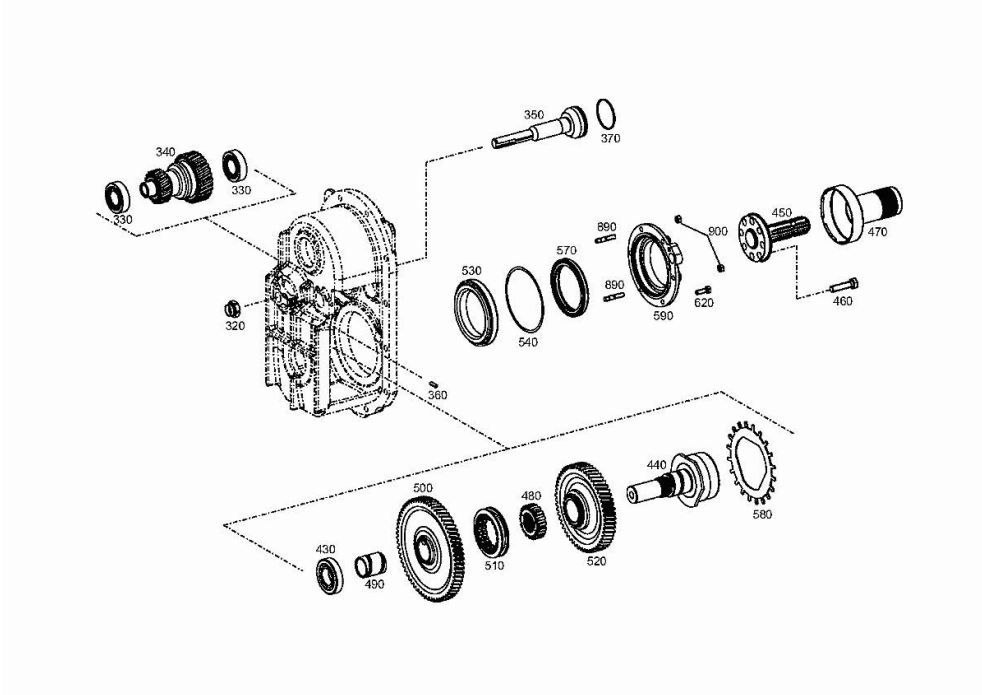


Fig.	P/n	QTY	Name
320	0.900.0124.8	1	ring nut
330	04431639	2	bearing
340	0.900.0451.9	1	gear z=19 z=30
350	04417652	1	pin
360	04433234	2	roll pin 6x20
370	0.900.0468.3	1	oil seal 57x2
380	04424372	1	ring nut
430	0.900.1385.0	1	bearing
440	0.900.0802.5	1	shaft Z = 18
450	04417388	1	shaft
460	0.010.3293.0	8	screw m 12 x 50
470	04417440	1	guard
480	04417641	1	support
490	04417681	1	special bushing
500	0.900.0884.4	1	gear z=66
510	04431727	2	sleeve
520	0.900.0877.3	1	gear z=56
530	0.900.0282.9	1	roller bearing
540	04417391	1	shim s = 0.10
540	04417392	1	shim s = 0.15
540	04417393	1	shim s = 0.40
570	04417395	1	oil seal 94x118x12
580	0.900.1432.0	1	gear
590	04417438	1	cover
620	04434498	2	screw m 8 x 25
890	0.900.0281.3	4	stud bolt m 8 x 35
900	0.900.0281.5	4	nut m 8

REAR AXLE - 2097 004 010

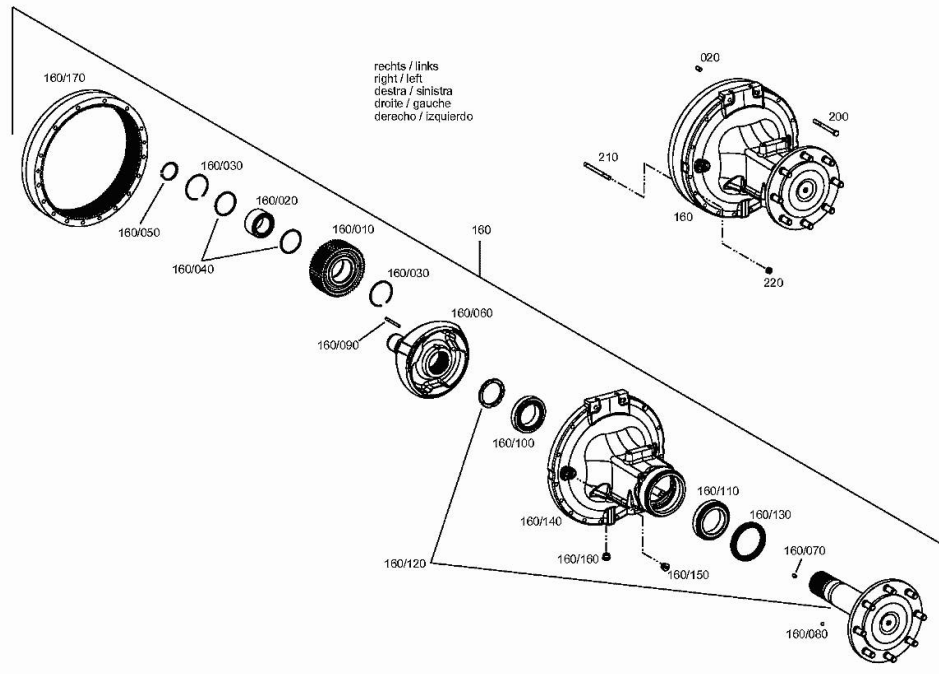
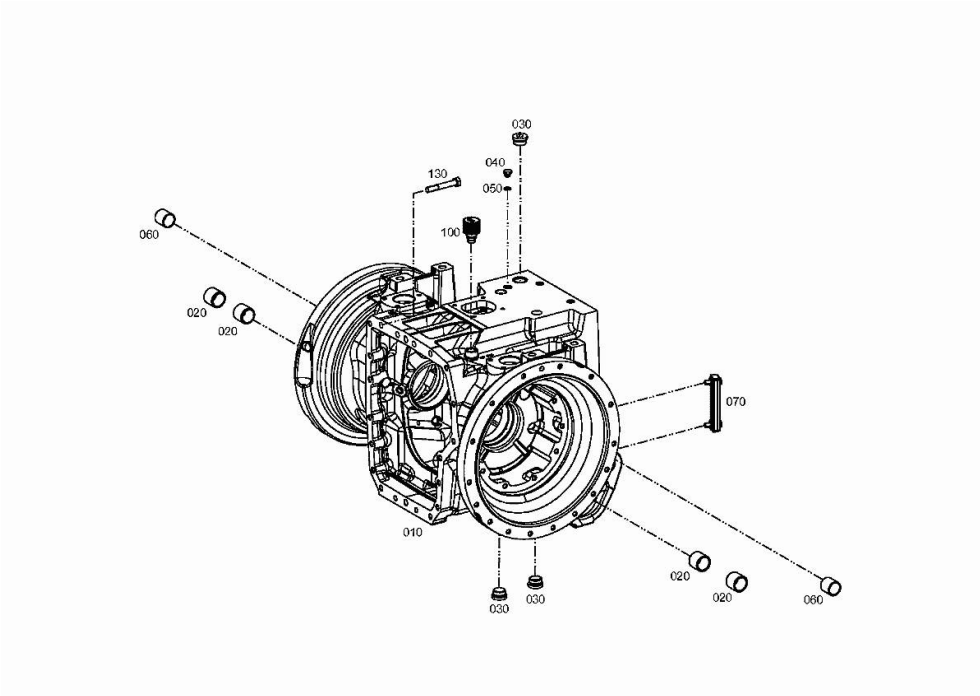


Fig.	P/n	QTY	Name
20	0.900.0278.2	2	pin 12 x 24
160	0.900.1620.3	2	wheel support
160.10	0.900.1236.1	3	crown wheel
160.20	0.900.1236.2	3	bearing
160.30	0.900.1236.3	6	circlip
160.40	0.900.1236.4	6	ring
160.50	0.900.1236.5	3	circlip
160.60	0.900.1236.6	1	spider
160.70	0.010.3588.2	1	grub screw m 10x16
160.80	04309268	1	ball
160.90	0.900.0278.3	1	roll pin 8x90
160.100	0.900.1236.7	1	bearing
160.110	0.900.1236.8	1	bearing
160.120	0.900.1620.2	1	shaft
160.130	0.010.3642.2	1	ring
160.140	0.900.1237.4	1	ring
160.150	0.900.0001.8	2	plug
160.160	0.010.3849.0	1	plug
160.170	0.900.1237.5	1	crown wheel
200	0.900.0469.3	28	screw m 12x140
210	0.900.0456.5	4	screw m 12x150
220	0.900.0281.4	4	nut m 12

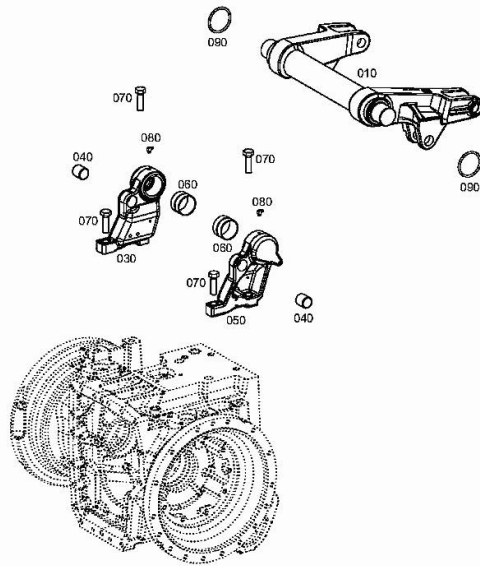
REAR GEARBOX CASE - 2097 004 010

Fig.	P/n	QTY	Name
10	0.900.1237.7	1	gear box
20	0.900.1237.8	4	bushing
30	0.900.1445.1	3	plug m 33x2
40	0.900.0281.0	1	plug m 14 p.1.5
50	04423731	1	oil seal 14 x 18
60	04417451	2	bushing
70	0.900.1237.9	1	level indicator
100	0.900.1238.0	1	valve
130	0.900.1448.9	1	screw



LIFTING - 2097 004 010

Fig.	P/n	QTY	Name
10	0.900.0883.4	1	shaft
30	0.900.1407.9	1	bearing block dx/rh/re
40	0.900.1431.3	2	bearing
50	0.900.1408.0	1	bearing block sx/lh/li
60	04417549	2	special bushing
70	0.900.0469.1	4	screw m 20x65
80	04427636	2	grease gun m 8 p.1 x 8
90	04417552	2	ring 78.5x6



OIL SUPPLY - 2097 004 010

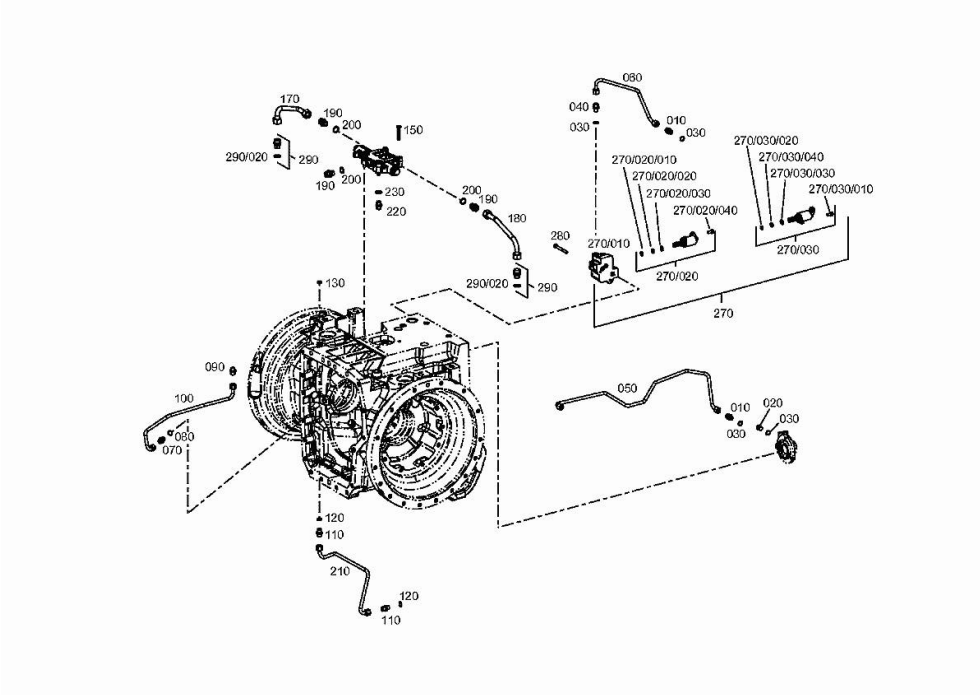
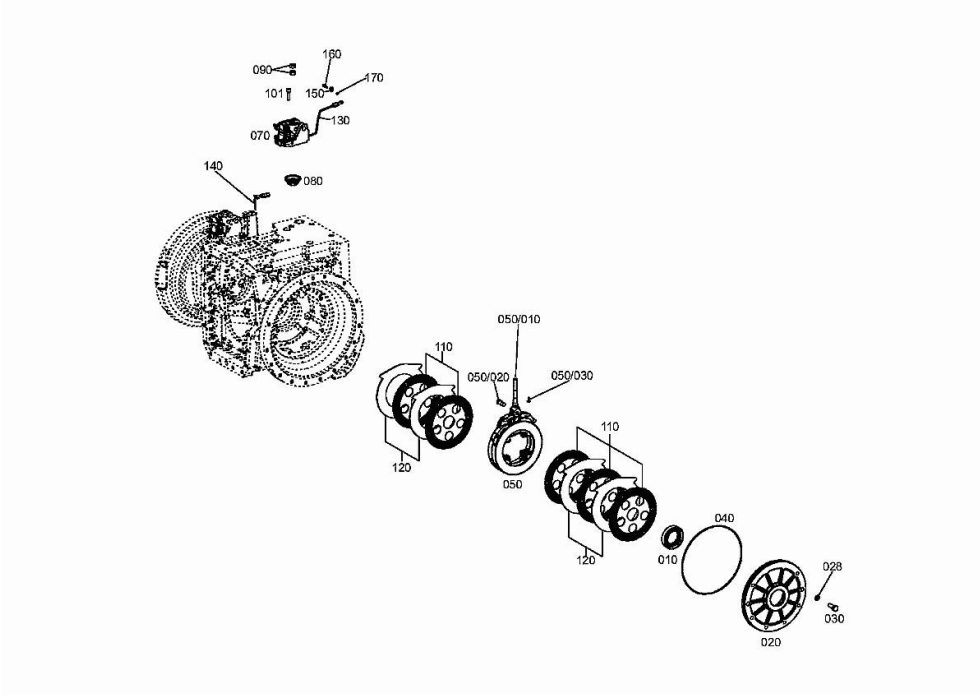


Fig.	P/n	QTY	Name
10	04417466	2	pipe fitting
20	0.900.0280.7	1	stop
30	04423731	4	oil seal 14 x 18
40	04417466	1	pipe fitting
50	0.900.1238.2	1	tube
60	0.900.1238.3	1	tube
70	04417466	1	pipe fitting
80	04423731	1	oil seal 14 x 18
90	04417705	1	vent
100	0.900.1238.4	1	tube
110	04417466	2	pipe fitting
120	04423731	2	oil seal 14 x 18
130	0.900.1238.5	1	plug
150	0.900.1238.6	4	screw m 8 x 50
160	0.900.0885.3	1	gasket
170	0.900.1238.7	1	tube
180	0.900.1238.8	1	tube
190	0.900.0282.3	3	pipe union
200	0.900.0985.0	3	oil seal 18 x 24
210	0.900.1238.9	1	tube
220	04417466	1	pipe fitting
230	04423731	1	oil seal 14 x 18
270	0.900.1239.0	1	valve
270.10	0.900.1239.1	1	valve body
270.20	0.900.0952.8	1	solenoid valve DV
270.20.10	0.900.1377.5	1	gasket 12,4 x 1,78
270.20.20	0.900.1377.6	1	gasket 13 x 1.5
270.20.30	0.900.1377.7	1	gasket 14x1.78
270.20.40	0.900.1377.8	1	screw m 8 x 16
270.30	0.900.1239.2	1	solenoid valve EV
270.30.10	0.900.1377.8	1	screw m 8 x 16
270.30.20	0.900.1377.7	1	gasket 14x1.78
270.30.30	0.900.1498.3	1	oil seal 17x1.8
270.30.40	0.900.1566.6	1	oil seal 16x1.8
280	0.900.1239.3	2	screw m 8 x 70
290	0.900.1392.0	2	pipe fitting
290.20	0.900.1239.4	1	oil seal 15.3x2.4

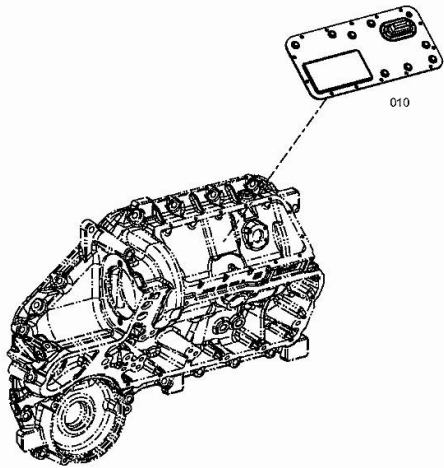
REAR BRAKES - 2097 004 010

Fig.	P/n	QTY	Name
10	04417316	2	oil seal
20	0.900.1239.5	2	cover
28	0.900.0277.9	4	washer
30	0.900.0279.7	16	screw m 12 x 40
40	04428220	2	oil seal 305x4
50	0.900.0800.4	2	transmission brake
50.10	04428551	1	rod
50.20	04435740	1	pin
50.30	04435741	1	split pin
70	0.900.0800.5	2	operation
80	0.900.0800.9	2	rubber bushing
90	04434557	4	nut m 14 p.1.5
101	0.900.0469.7	6	screw m 10 x 40
110	0.900.0801.2	10	disc
120	0.900.0801.3	8	disc
130	04428545	1	tube sx/lh/li
140	04428546	1	piping dx/rh/re
150	0.900.0468.2	2	clamp 6x12
160	0.900.0280.1	2	screw m 5 x 25
170	0.900.0470.2	2	nut m 5



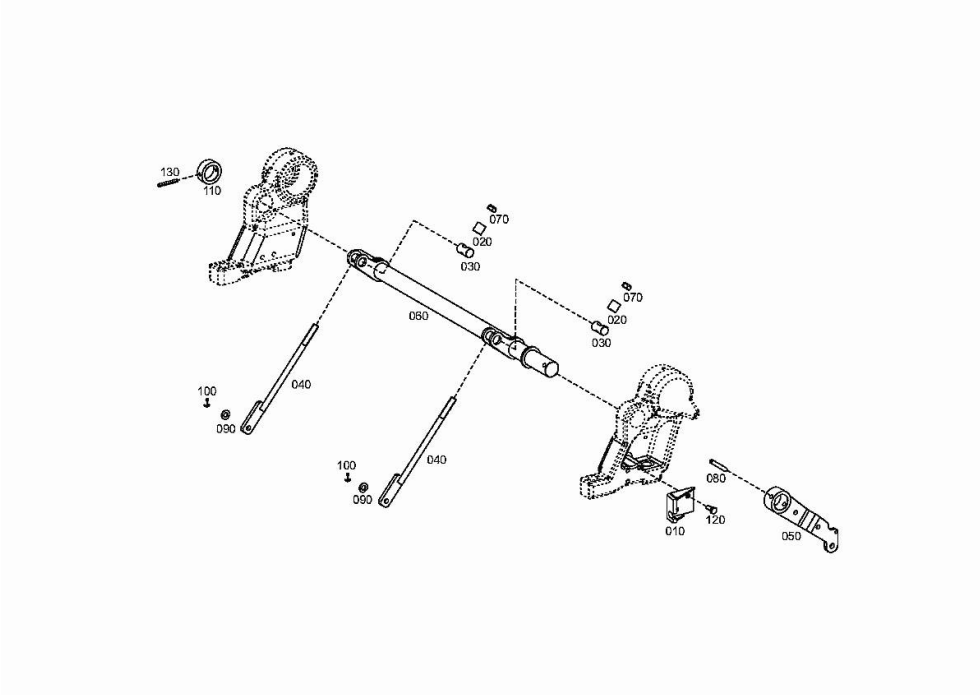
TRANSMISSION CONTROL UNIT - 2097 004 010

Fig.	P/n	QTY	Name
10	0.900.1253.6	1	control



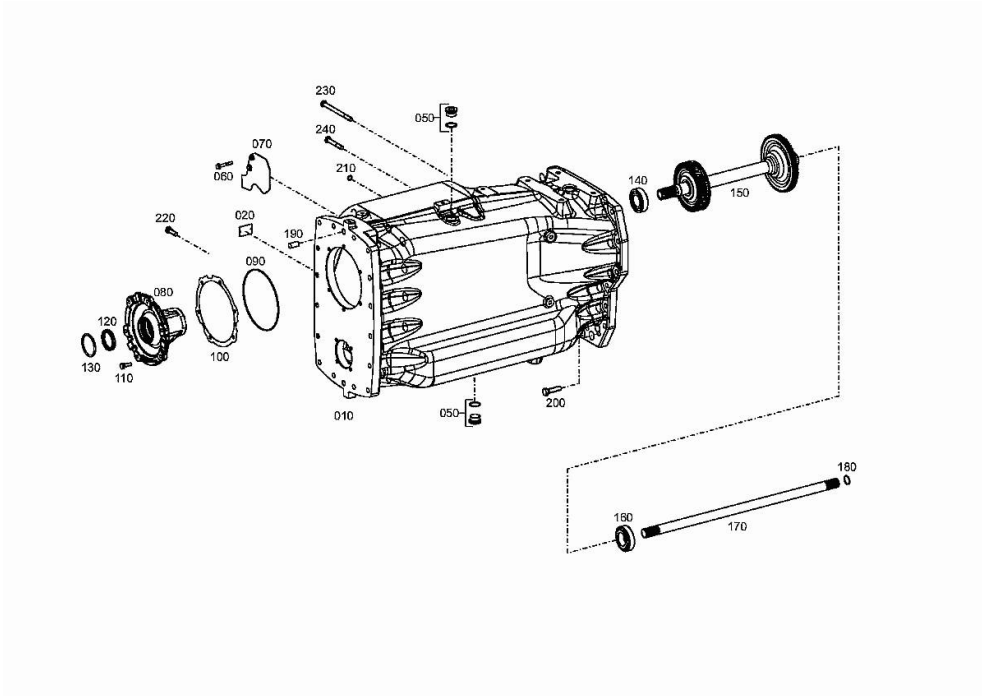
BRAKE CONTROLS - 2097 004 010

Fig.	P/n	QTY	Name
10	0.900.1239.7	1	bracket
20	0.900.1239.8	2	tube
30	0.900.1239.9	2	pin
40	0.900.1240.0	2	rod
50	0.900.1240.1	1	lever
60	0.900.1240.2	1	shaft
70	0.900.0281.9	2	nut m 12
80	0.010.3459.1	1	roll pin
90	0.900.0466.9	2	washer
100	0.900.0468.1	2	split pin 3.2x18
110	0.900.1240.3	1	spacer
120	0.900.0469.4	3	screw m 8 p.1.25 x 20
130	0.010.2901.1	1	pin 6x50



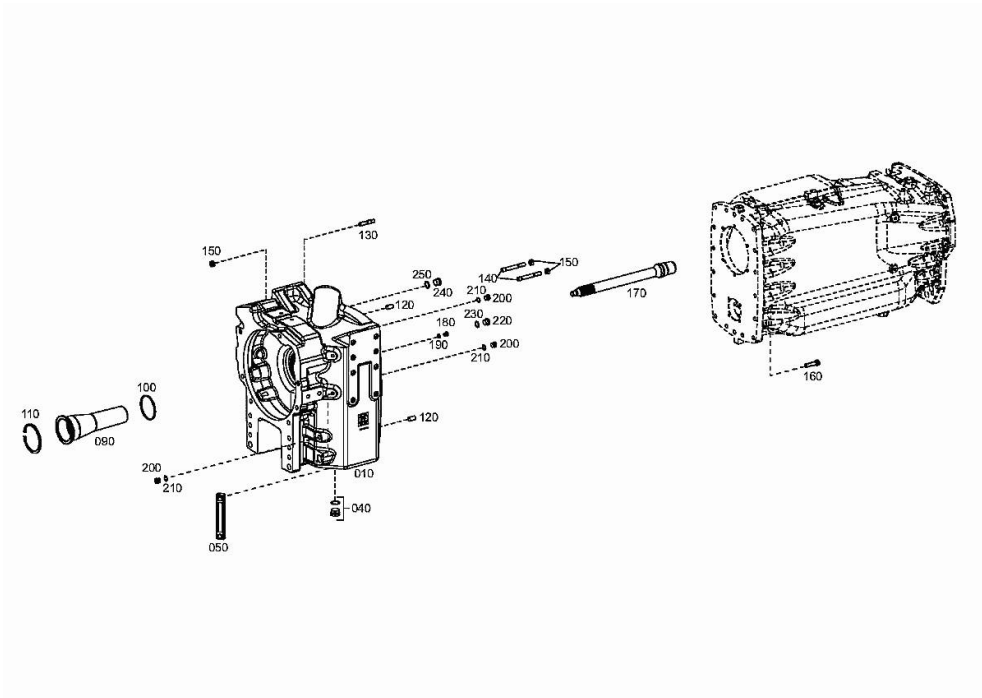
GEARBOX - 2097 004 009

Fig.	P/n	QTY	Name
10	0.900.1218.8	1	gear box
20	0.900.0482.2	1	plate
50	0.900.1445.1	2	plug m 33x2
60	0.900.1444.6	2	screw m 8 x 50
70	0.900.1219.1	1	plate
80	0.900.1391.4	1	flange
90	0.900.1219.2	1	oil seal
100	0.900.1219.3	1	shim mm = 0.1
100	0.900.1219.5	1	shim mm = 0.15
100	0.900.1219.6	1	shim mm = 0.4
100	0.900.1219.7	1	shim mm = 0.6
100	0.900.1219.8	1	shim mm = 0.8
110	0.900.1444.0	6	screw m 10 x 30
120	0.900.1219.9	1	gasket
130	0.900.1220.0	1	oil seal
140	0.900.1220.1	1	bearing
150	0.900.1220.2	1	shaft
160	0.900.1220.3	1	bearing
170	0.900.1220.4	1	shaft
180	0.010.2863.1	1	circlip 30
190	0.900.1220.5	2	cylindrical plug
200	0.900.1444.3	19	screw m 14 x 55
210	0.900.1220.7	3	oil seal 11 x 3
220	0.010.2885.1	19	screw m 12 x 40
230	0.900.1443.8	1	screw m 12 x 160
240	0.010.3729.2	1	screw m 12 x 80



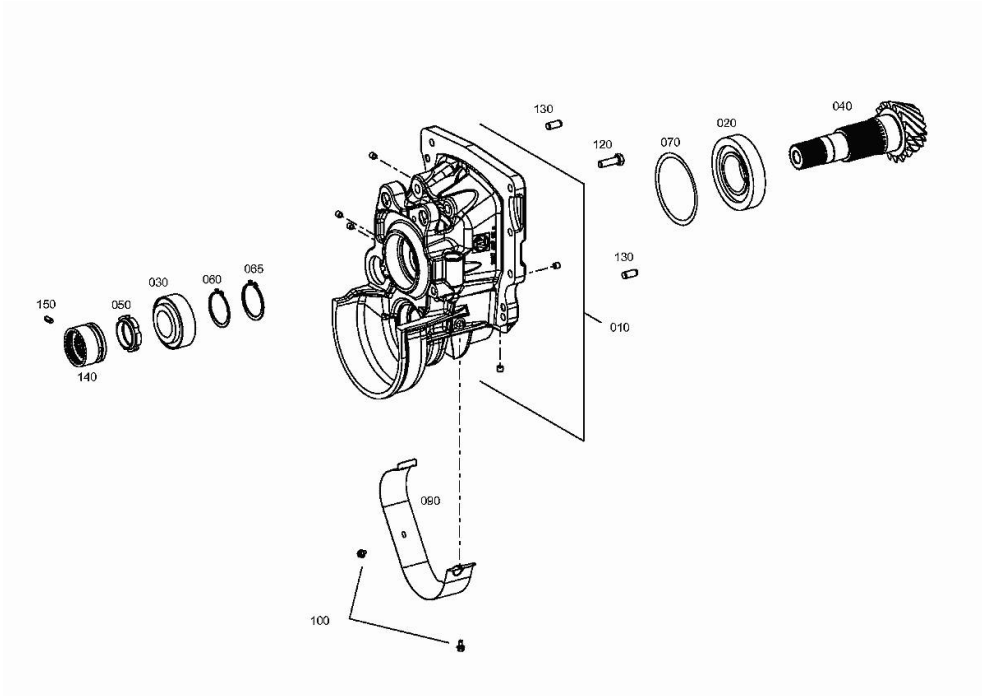
JUNCTION CASE - 2097 004 009

Fig.	P/n	QTY	Name
10	0.900.1567.7	1	box
40	0.900.1445.1	2	plug m 33x2
50	0.900.1221.2	1	level indicator
90	0.900.1221.3	1	tube
100	0.900.1221.4	1	oil seal 102 x 6
110	0.900.1221.5	1	circlip 125x4
120	0.900.1220.5	2	cylindrical plug
130	0.900.1445.8	4	grub screw m 14 x 55
140	0.900.1445.9	2	grub screw m 14x100
150	0.900.1618.7	6	nut m14
152	0.900.1377.9	1	adhesive
160	0.900.1444.3	10	screw m 14 x 55
170	0.900.1221.9	1	shaft
180	0.900.1222.0	1	plug
190	0.900.1222.1	1	gasket
200	0.900.0291.5	3	plug
210	0.010.2898.2	3	gasket 18x22
220	0.010.2622.3	2	screw m 22 x 1.5
230	01118737	2	oil seal 22 x 27
240	0.010.2622.1	1	screw m 26 p.1.5
250	0.010.2899.0	1	gasket 26x31



FLANGE - 2097 004 009

Fig.	P/n	QTY	Name
10	0.900.1447.8	1	box
20	0.900.1222.3	1	bearing
30	0.900.1222.4	1	bearing
40	0.900.1567.6	1	pinion Z = 14
50	0.900.1222.6	1	ring nut
60	0.900.1222.7	1	circlip 63x2
65	0.900.1222.8	1	circlip 63x2.5
70	0.900.1222.9	1	shim mm = 1.10
70	0.900.1223.0	1	shim mm = 1.15
70	0.900.1223.1	1	shim mm = 1.20
70	0.900.1223.2	1	shim mm = 1.25
70	0.900.1223.3	1	shim mm = 1.30
70	0.900.1223.4	1	shim mm 1.35
70	0.900.1223.5	1	shim mm = 1.40
70	0.900.1223.6	1	shim mm = 1.45
70	0.900.1223.7	1	shim mm 1.50
70	0.900.1223.8	1	shim mm = 1.55
70	0.900.1223.9	1	shim mm = 1.60
70	0.900.1224.0	1	shim mm = 1.65
70	0.900.1224.1	1	shim mm = 1.70
90	0.900.1447.7	1	cover
100	0.900.1444.9	2	screw m 6 x 12
120	0.010.2885.1	8	screw m 12 x 40
130	0.900.1224.5	2	cylindrical plug
140	0.900.1224.6	1	sleeve
150	0.900.1224.7	1	pin 8x20



IRON 190 CONTINUO DCR -> 10001

Section: D0 - TRANSMISSION

Ref: 0.018.3467.4

TRANSMISSION - 2097 004 009

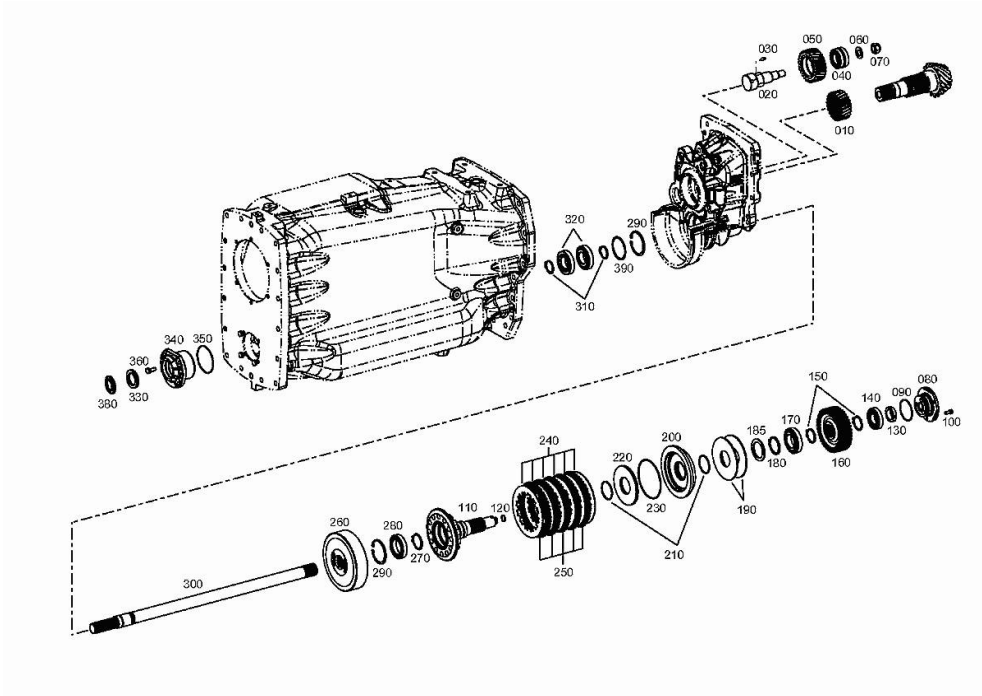


Fig.	P/n	QTY	Name
10	0.900.1568.1	1	gear wheel Z = 23
20	0.900.1224.9	1	pinion
30	0.900.1224.7	1	pin 8x20
40	0.900.1225.0	1	bearing
50	0.900.1567.9	1	gear wheel Z = 28
60	0.900.1443.3	1	disc
70	0.900.1446.1	1	nut m 20 x 1.5
80	0.900.1225.4	1	cover
90	0.900.1225.5	1	ring
100	0.900.0469.4	3	screw m 8 p.1.25 x 20
110	0.900.1520.4	1	flange
120	0.900.1225.7	1	gasket
130	0.900.1225.8	1	nut
140	0.900.0279.2	1	roller bearing
150	0.900.1225.9	2	circlip
160	0.900.1568.0	1	gear wheel Z = 41
170	0.900.1226.1	1	bearing
180	0.010.3075.1	1	ring 55x3
185	0.900.1618.8	1	shim mm 3.20
185	0.900.1618.9	1	shim mm 3.30
185	0.900.1619.0	1	shim mm 3.40
185	0.900.1619.1	1	shim mm 3.50
185	0.900.1619.2	1	shim mm 3.60
185	0.900.1619.3	1	shim mm 3.70
185	0.900.1619.4	1	shim mm 3.80
185	0.900.1619.5	1	shim mm 3.90
185	0.900.1619.6	1	shim mm 4.00
185	0.900.1619.7	1	shim mm 4.10
185	0.900.1619.8	1	shim mm 4.20
190	0.900.1226.3	2	cap-washer
200	0.900.1226.4	1	cylinder
210	0.010.3466.0	2	oil seal 57 x 3
220	0.900.1226.5	1	piston
230	0.900.1226.6	1	oil seal
240	0.900.1226.7	6	disc
250	0.900.1226.8	5	disc Z = 46
260	0.900.1226.9	1	clutch assy
270	0.010.3345.1	1	circlip 50x2
280	0.900.1227.0	1	bearing
290	01107855	2	circlip 80 x 2.5
300	0.900.1391.5	1	shaft z=18
310	0.010.2876.2	2	circlip 40x2.5
320	04415697	2	roller bearing
330	0.900.1566.8	1	oil seal 40x62x7

Thank you so much for reading.
Please click the “Buy Now!”
button below to download the
complete manual.



After you pay.

You can download the most
perfect and complete manual in
the world immediately.

Our support email:

ebooklibonline@outlook.com