

REAR AXLE - MOUNTINGS

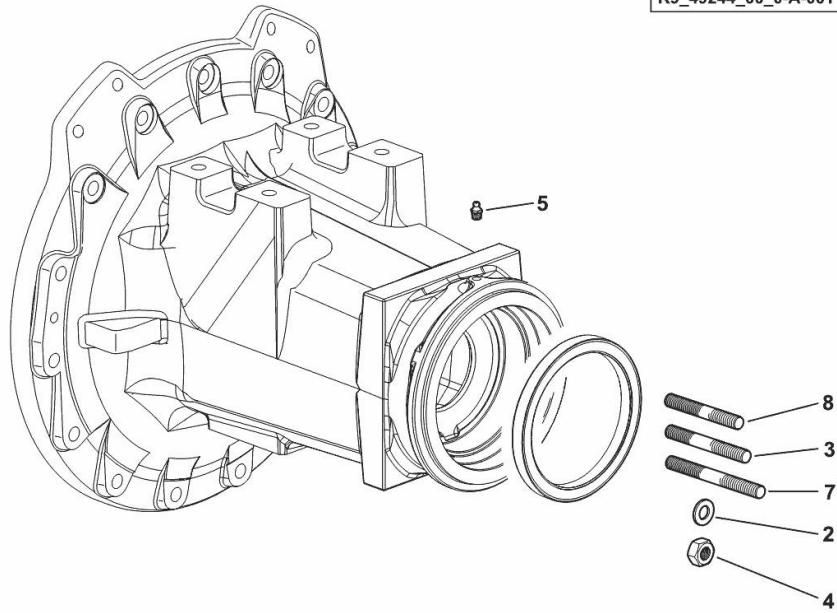
Fig.	P/n	QTY	Name
------	-----	-----	------

Notes:

[IRON³ 190 DCR ->ZKDU0502W0LS10010]

2	2.1475.005.7	30	washer 14
3	2.0432.326.7	24	stud bolt m 14 p.2-1.5x110
4	2.1011.308.2	30	nut m 14 p.1.5
5	2.3820.105.2	2	grease gun m 10 p.1 x 7
7	2.0432.328.7	4	stud bolt m 14 p.2-1.5x130
8	2.0432.325.7	2	stud bolt m 14 p.2-p1.5x100

K9_49244_00_0-A-001



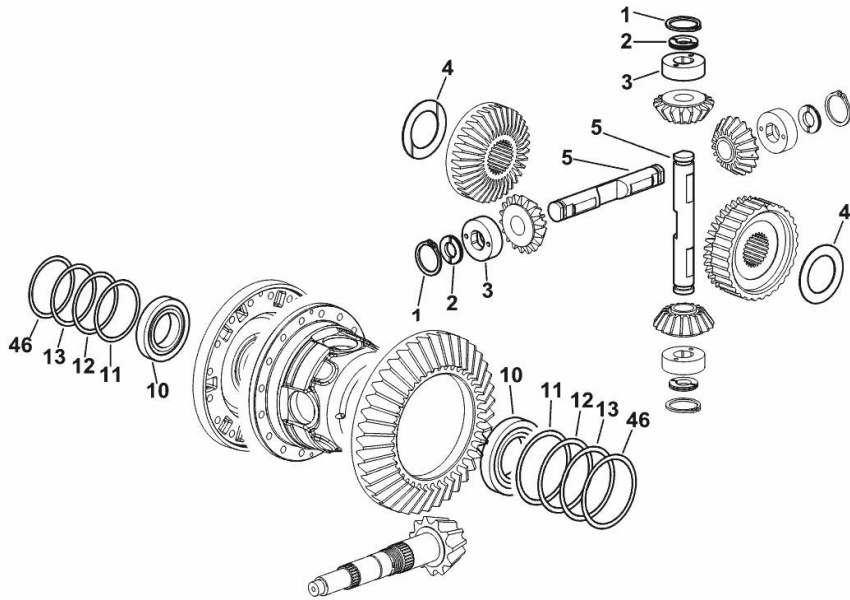
REAR DIFFERENTIAL

Fig.	P/n	QTY	Name
------	-----	-----	------

Notes:

[IRON³ 190 DCR ->ZKDU0502W0LS10010]

1	2.1410.016.1	4	circlip 40
2	0.233.3551.0	8	shoulder ring
3	0.264.3550.0/20	4	spacer
4	2.1599.889.0	2	slewing ring 55.5x85x2
5	0.012.6823.3	1	pin
10	2.2520.018.0	2	bearing
11	2.1589.089.0	8	shoulder ring 130x149x0.10
12	2.1589.090.0	4	shoulder ring 130x149x0.20
13	2.1589.091.0	8	shoulder ring 130x149x0.50
46	2.1580.433.0	4	shoulder ring 130x149x0.15



K9_J5735_02_0-A-001

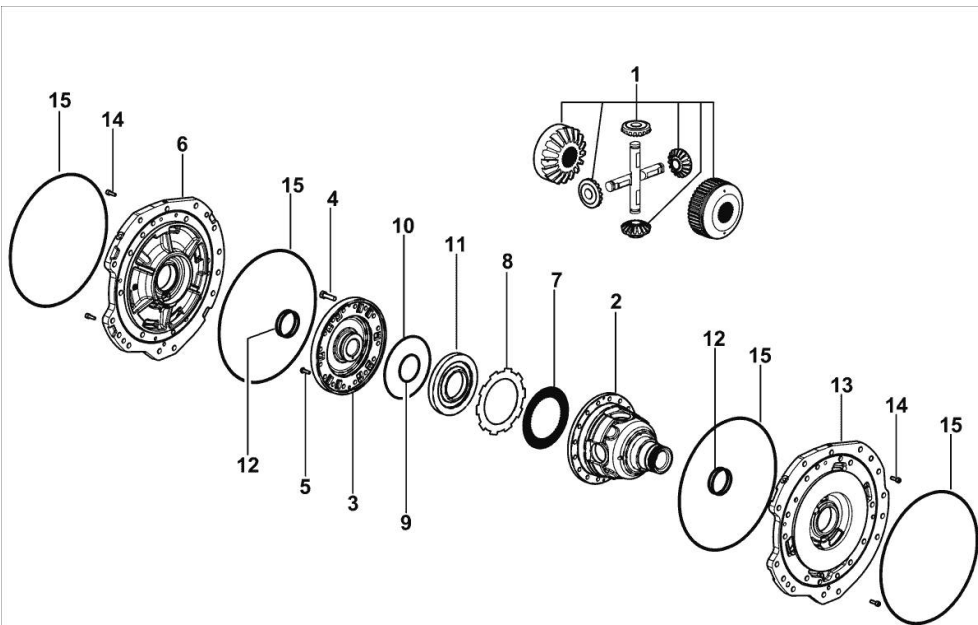
DIFFERENTIAL

Fig.	P/n	QTY	Name
------	-----	-----	------

Notes:

[IRON³ 190 DCR ->ZKDU0502W0LS10010]

1	0.005.8257.3/20	1	planet gear
2	0.015.3004.3/40	1	differential carrier
3	0.015.3020.3/30	1	half box
4	2.0139.013.1	16	screw m 12 p.1.25x45
5	2.0112.209.2	2	screw m 8 p 1.25 x 25
6	0.015.7696.0/40	1	flange dx/rh/re
7	0.013.9447.2	8	disc
8	0.013.9450.0	8	disc
9	2.1539.101.0	1	special oil seal 78.97x3.53
10	2.1539.102.0	1	special oil seal 190.1x3.53
11	0.005.8256.0/10	1	piston
12	2.1499.111.0	4	ring 82 (10018 <-)
12	2.1499.254.0/10	4	ring 82
13	0.015.7694.0/40	1	flange sx/lh/li
14	2.0312.208.2	4	screw m 8 p.1.25 x 25
15	2.1532.518.0	4	oil seal 405.26x3.53



K9_J5735_00_0-A-001

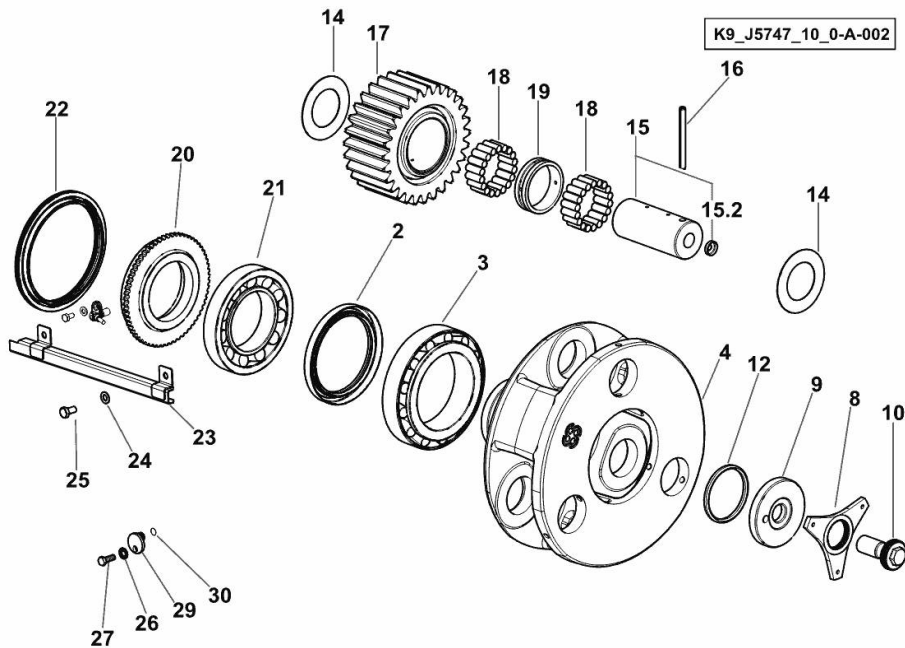
REAR FINAL DRIVES

Fig.	P/n	QTY	Name
------	-----	-----	------

Notes:

[IRON³ 190 DCR ->ZKDU0502W0LS10010]

2	2.1529.056.0/10	2	special oil seal Ø 110/140 x13
3	2.2510.020.0	2	roller bearing Ø 110/170 x38
4	0.008.5990.0/40	2	spider
8	0.015.9970.0/30	2	flange
9	0.016.0002.0/20	2	slewing ring
10	2.0399.327.7/20	2	screw m24x2
12	2.1532.171.0	2	oil seal 72.39x5.34
14	2.1599.675.0	12	shoulder 54.3x90x1.5
15	0.008.5992.3/10	6	pin
15.2	2.3179.010.4	2	plug
16	2.1630.722.0	6	roll pin
17	0.008.5991.0	6	planet gear
18	2.2999.512.0	6	roller cage
19	0.008.5993.0	6	spacer
20	0.016.7454.0	2	spacer
21	2.2520.018.0	2	bearing
22	2.1519.149.0	2	ring 140x169x15
23	0.015.6173.2/10	1	shield
24	2.1475.002.2	2	conical washer 8
25	2.0112.205.2	2	screw m 8 p.1.25 x 16
26	2.1310.002.2	2	flat washer 6.4x12.5
27	2.0112.003.2	2	screw m 6 p.1 x 12
29	0.016.2751.0	1	flange
30	2.1532.012.0	1	oil seal 6.75 x 1.78



IRON³ 190 DCR ->ZKDU0502W0LS10010

Section: E0 - REAR AXLE

Ref: E0.02.3 (1)

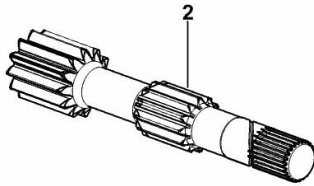
REAR INTERNAL HALF-SHAFT SX/LH/LI - DX/RH/RE

Fig.	P/n	QTY	Name
------	-----	-----	------

Notes:

[IRON³ 190 DCR ->ZKDU0502W0LS10010]

2	0.016.0786.0	2	half-shaft
---	--------------	---	------------



K9_J5747_00_0-A-001

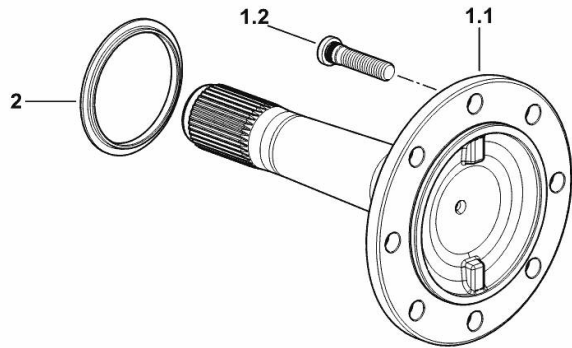
REAR HALF-SHAFTS SX/LH/LI - DX/RH/RE

Fig.	P/n	QTY	Name
------	-----	-----	------

Notes:

[IRON³ 190 DCR ->ZKDU0502W0LS10010]

1.1	0.016.2452.0	2	half-shaft
1.2	0.009.3545.0	16	small column m 22 p.1.5x70 (...) <-
1.2	0.019.6046.0	16	small column m 22 p.1.5x95 -> (...)
2	0.016.7208.0	2	ring



K9_J5747_01_0-A-003

IRON³ 190 DCR ->ZKDU0502W0LS10010

Section: E0 - REAR AXLE

Ref: E0.02.5 (1)

EXTENDIBLE REAR HALF SHAFTS SX/LH/LI - DX/RH/RE

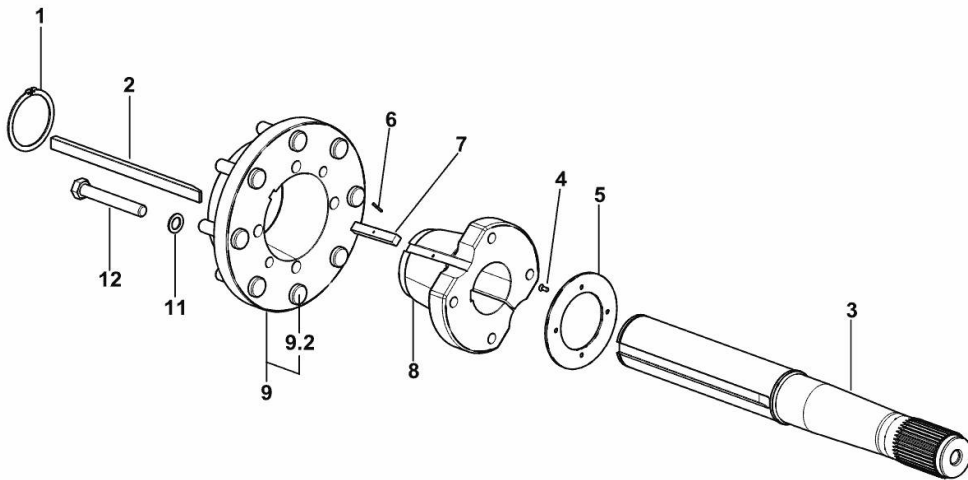
Fig.	P/n	QTY	Name
------	-----	-----	------

Notes:

[IRON³ 190 DCR ->ZKDU0502W0LS10010]

1	2.1410.036.2	2	circlip 90
2	2.1799.025.2/10	2	stick
3	0.015.9870.0	2	half-shaft
4	2.0322.405.6	8	screw m 6 x 14
5	0.016.7560.0/10	2	guard
6	2.1630.211.0	2	roll pin 3x24
7	2.1799.020.2	2	stick
8	0.212.4757.0	2	flange
9	0.009.3540.3/10	2	flange
9.2	0.009.3541.0	8	small column m 22 p1.5x85
11	2.1475.008.2	8	washer 20
12	2.0119.080.2	8	screw

K9_J5747_02_0-A-001



REAR BRAKE HOUSINGS

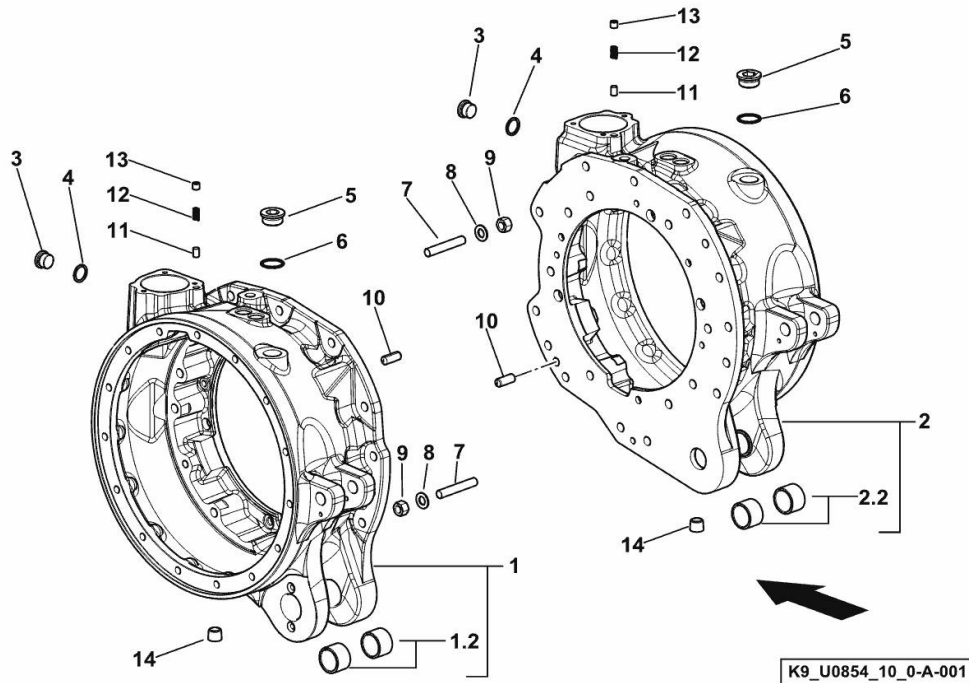


Fig.	P/n	QTY	Name
------	-----	-----	------

Notes:

[IRON³ 190 DCR ->ZKDU0502W0LS10010]

1	0.018.1921.3	1	box
1.2	2.1559.418.0	2	bushing
2	0.018.1923.3	1	box
2.2	2.1559.418.0	2	bushing
3	2.3120.011.4	2	plug m 24 p.1.5
4	2.1560.019.0	2	copper gasket 24.3x30
5	2.3199.002.2	2	plug 1 gas
6	2.1560.056.0	2	gasket 33x39
7	2.0432.318.7	26	stud bolt
8	2.1475.005.7	26	washer 14
9	2.1011.308.2	26	nut m 14 p.1.5
10	2.1699.354.0	8	pin 14x37
11	0.427.6452.0	2	cap 10x15
12	2.4019.488.1	2	spring
13	2.0512.403.7	2	grub screw m 12x10
14	2.3130.004.1	2	plug 1/2 gas

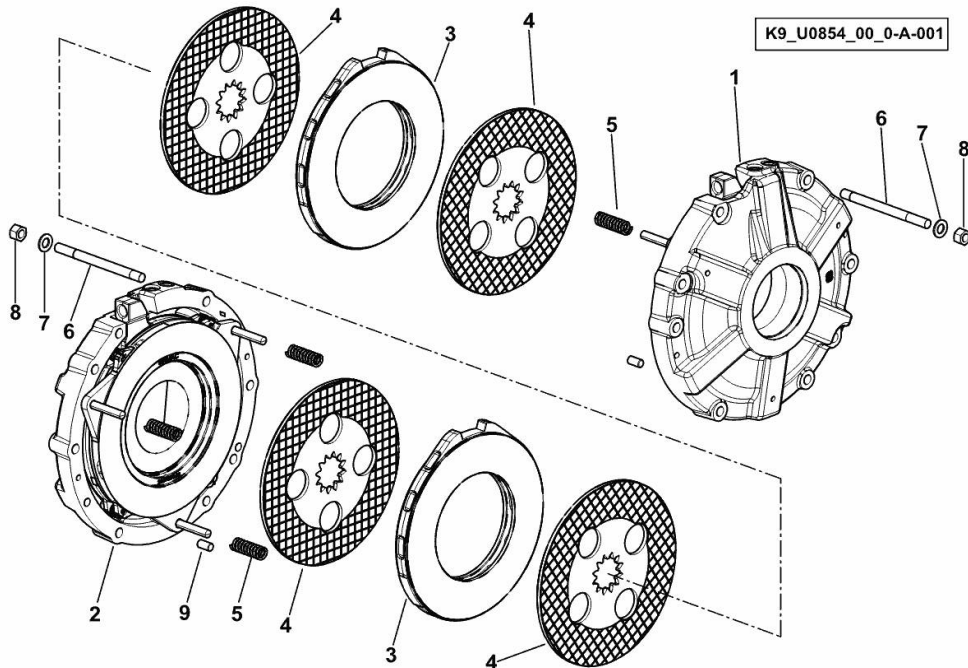
REAR BRAKES

Fig.	P/n	QTY	Name
------	-----	-----	------

Notes:

[IRON³ 190 DCR ->ZKDU0502W0LS10010]

1	0.016.1776.4/30	1	box sx/lh/li ☞ 0.016.1776.4/30
2	0.016.1777.4/30	1	box dx/rh/re ☞ 0.016.1777.4/30
3	0.018.1937.0	2	pressure plate
4	0.017.5978.2	4	brake disc
5	2.4019.689.1/10	6	spring
6	2.0432.331.7	16	stud bolt m 14 p.1.5 x 160
7	2.1475.005.7	16	washer 14
8	2.1011.308.2	16	nut m 14 p.1.5
9	2.1655.608.0	4	pin 12 x 24



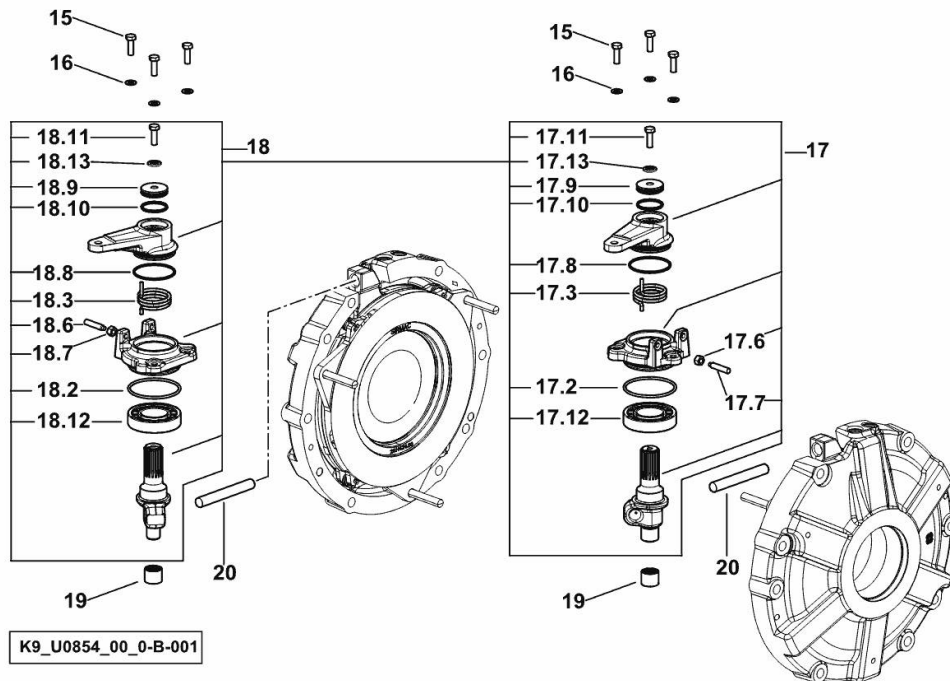
REAR BRAKES

Fig.	P/n	QTY	Name
------	-----	-----	------

Notes:

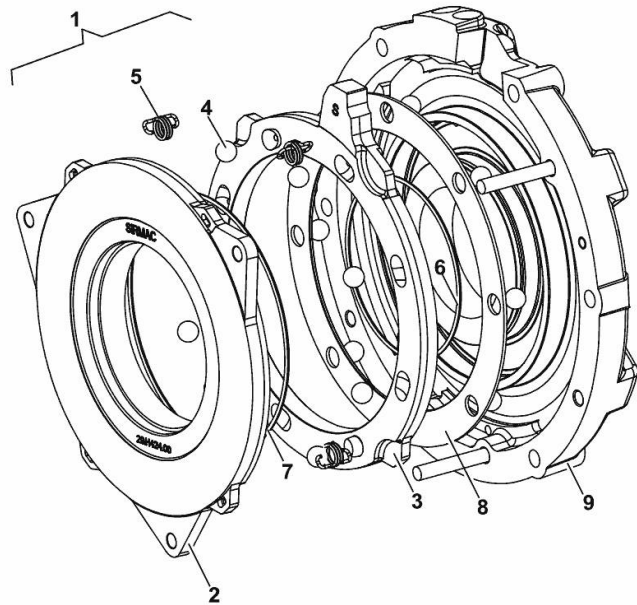
[IRON³ 190 DCR ->ZKDU0502W0LS10010]

15	2.0112.209.2	6	screw m 8 p 1.25 x 25
16	2.1475.002.2	6	conical washer 8
17	0.016.0210.4/20	1	actuator sx/lh/li
17.2	2.1530.172.0	1	oil seal 73.03x3.53
17.3	2.4099.178.1	1	spring
17.6	2.1011.005.6	1	nut m 8 p.1.25
17.7	2.0522.216.7	1	grub screw m 8 p.1.25 x 40
17.8	2.1532.140.0	1	oil seal 56.82x2.62
17.9	0.016.0236.0/10	1	cup
17.10	2.1532.091.0	1	ring 34.60 x 2.62
17.11	2.0112.208.2	1	screw m 8 p.1.25 x 22
17.12	2.2423.012.0	1	roller bearing 40 x 80 x 18
17.13	2.1561.003.0	1	washer
18	0.016.0211.4/20	1	actuator dx/rh/re
18.2	2.1530.172.0	1	oil seal 73.03x3.53
18.3	2.4099.179.1	1	spring
18.6	2.1011.005.6	1	nut m 8 p.1.25
18.7	2.0522.216.7	1	grub screw m 8 p.1.25 x 40
18.8	2.1532.140.0	1	oil seal 56.82x2.62
18.9	0.016.0236.0/10	1	cup
18.10	2.1532.091.0	1	ring 34.60 x 2.62
18.11	2.0112.208.2	1	screw m 8 p.1.25 x 22
18.12	2.2423.012.0	1	roller bearing 40 x 80 x 18
18.13	2.1561.003.0	1	washer
19	2.2999.503.0	2	roller bearing
20	0.015.9557.0	2	rod



REAR BRAKES sx/lh/li

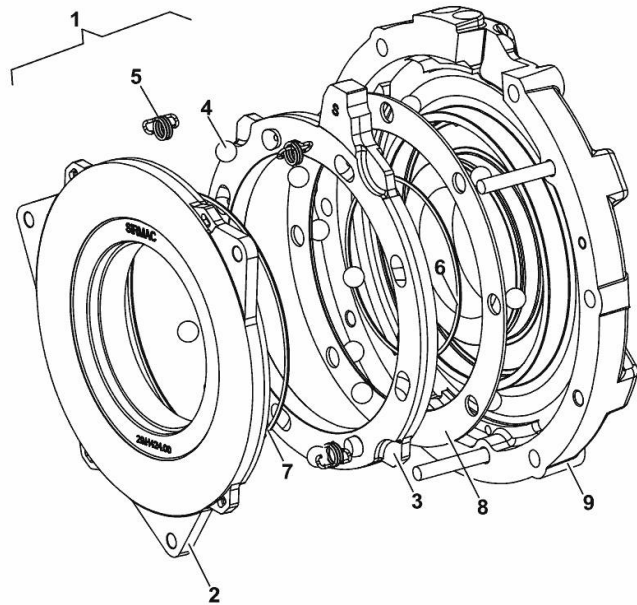
Fig.	P/n	QTY	Name
1	0.016.1776.4/30	1	box sx/lh/li
2	0.900.1209.3	1	piston
3	0.900.1208.3	1	ring
4	0.900.0455.5	16	ball Ø17.462 - 11/16"
5	0.900.0455.3	4	spring
6	0.900.1209.4	1	oil seal
7	0.900.0455.7	1	gasket
8	0.900.0455.2	1	ring
9	0.900.1209.5	1	cover



0.016.1776.4/30

REAR BRAKES dx/rh/re

Fig.	P/n	QTY	Name
1	0.016.1777.4/30	1	box dx/rh/re
2	0.900.1209.3	1	piston
3	0.900.1208.6	1	ring
4	0.900.0455.5	16	ball Ø17.462 - 11/16"
5	0.900.0455.3	4	spring
6	0.900.1209.4	1	oil seal
7	0.900.0455.7	1	gasket
8	0.900.0455.2	1	ring
9	0.900.1209.6	1	cover



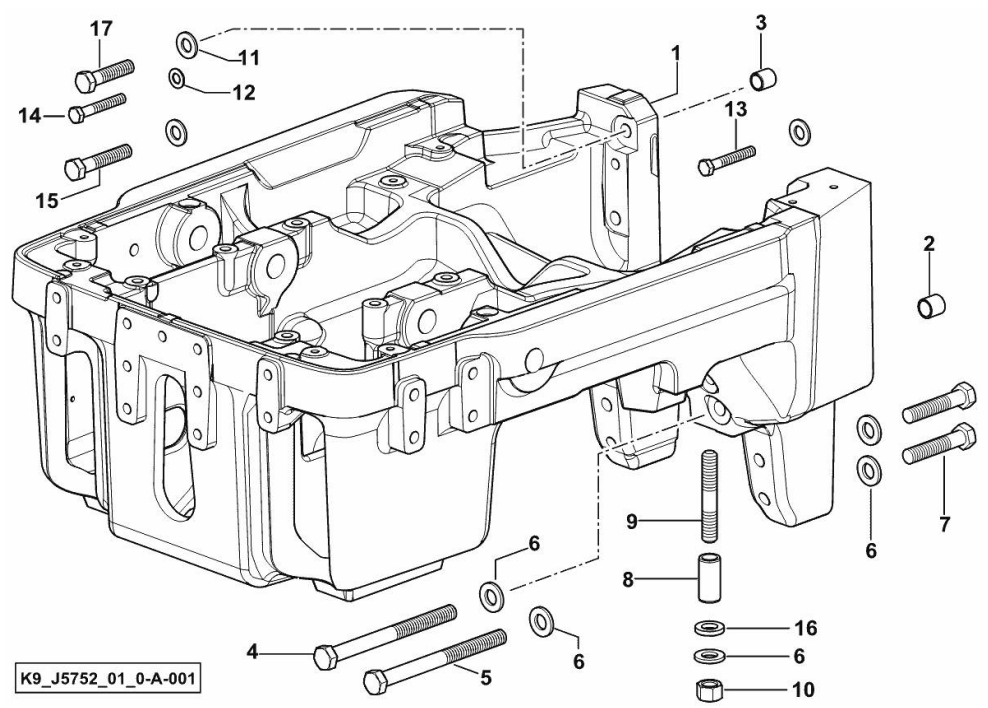
0.016.1777.4/30

FRONT SUPPORT

Fig.	P/n	QTY	Name
------	-----	-----	------

Notes:

- FOR TYPES WITHOUT SUSPENDED AXLE [IRON³ 190 DCR ->ZKDU0502W0LS10010]



K9_J5752_01_0-A-001

1	0.016.8517.0/30	1	front support
2	0.013.2899.0	4	bushing 19x24x23
3	2.2680.047.0	2	ring 17x22x23
4	2.0119.258.2/10	2	screw m 18 p.2.5 x 230
5	2.0119.259.2/10	2	screw
6	2.1475.007.7	12	washer 18
7	2.0114.725.2	4	screw m 18 p.2.5x80
8	2.1559.093.0	4	bushing 18.5x26x54
9	2.0432.523.7	4	bushing m 18 p.2.5-1.5x90
10	2.1019.060.2	4	special nut m 18 p.1.5
11	2.1475.006.2	4	spring washer 16
12	2.1475.004.2	2	spring washer 12
13	2.0112.627.2	1	screw m 16 p.2x90
14	2.0112.424.2	2	screw m 12 p.1.75x75
15	2.0112.626.2	2	screw m 16 p.2x85
16	2.1599.030.2	4	shoulder ring 19x35x6
17	2.0112.623.2	1	screw m 16 p.2 x 70

FRONT CARRIER WITH SUSPENSION

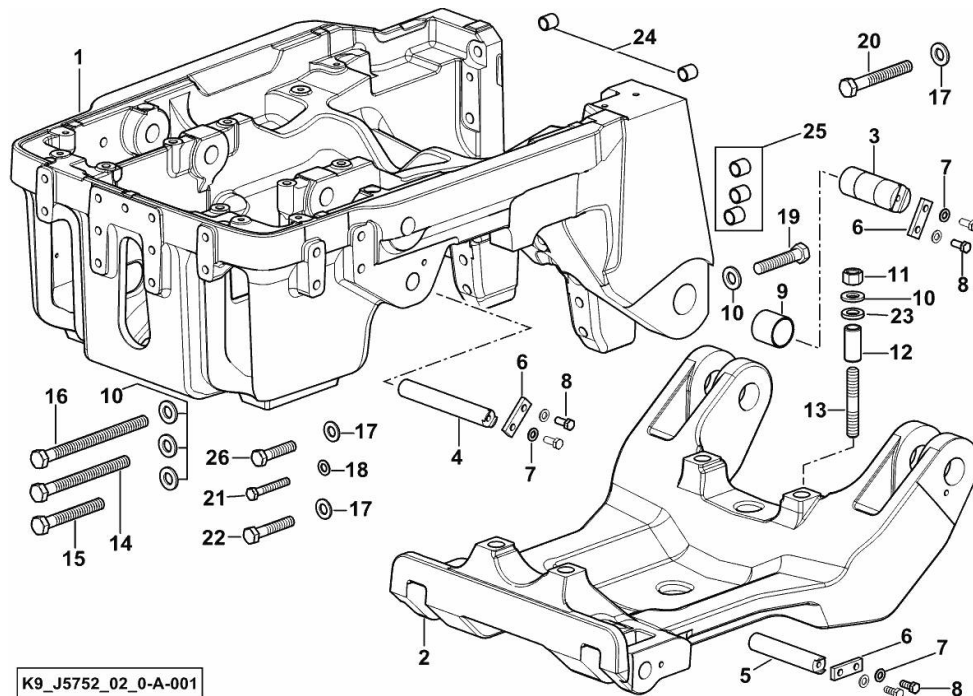


Fig.	P/n	QTY	Name
------	-----	-----	------

Notes:

- FOR TYPES WITH SUSPENDED DRIVING AXLE [IRON³ 190 DCR ->ZKDU0502W0LS10010]

1	0.016.8518.0/40	1	shock abs.supp.
2	0.013.2035.0/30	1	front support
3	0.013.2444.0	2	pin
4	2.1699.542.2	2	pin 28x195
5	2.1699.499.2/10	2	pin 28 x 150
6	0.011.7897.0	6	plate
7	2.1475.003.2	12	washer 10
8	2.0112.309.2	12	screw m 10 p.1.5 x 25
9	0.013.2187.0	2	bushing
10	2.1475.007.7	14	washer 18
11	2.1019.060.2	4	special nut m 18 p.1.5
12	2.1559.093.0	4	bushing 18.5x26x54
13	2.0432.523.7	4	bushing m 18 p.2.5-1.5x90
14	2.0112.735.2	4	screw m 18 p.2.5x130
15	2.0112.745.2	2	screw
16	2.0119.258.2/10	2	screw m 18 p.2.5 x 230
17	2.1475.006.2	4	spring washer 16
18	2.1475.004.2	2	spring washer 12
19	2.0114.725.2	4	screw m 18 p.2.5x80
20	2.0112.627.2	1	screw m 16 p.2x90
21	2.0112.424.2	2	screw m 12 p.1.75x75
22	2.0112.626.2	2	screw m 16 p.2x85
23	2.1599.030.2	4	shoulder ring 19x35x6
24	2.2680.047.0	2	ring 17x22x23
25	0.013.2899.0	6	bushing 19x24x23
26	2.0112.623.2	1	screw m 16 p.2 x 70

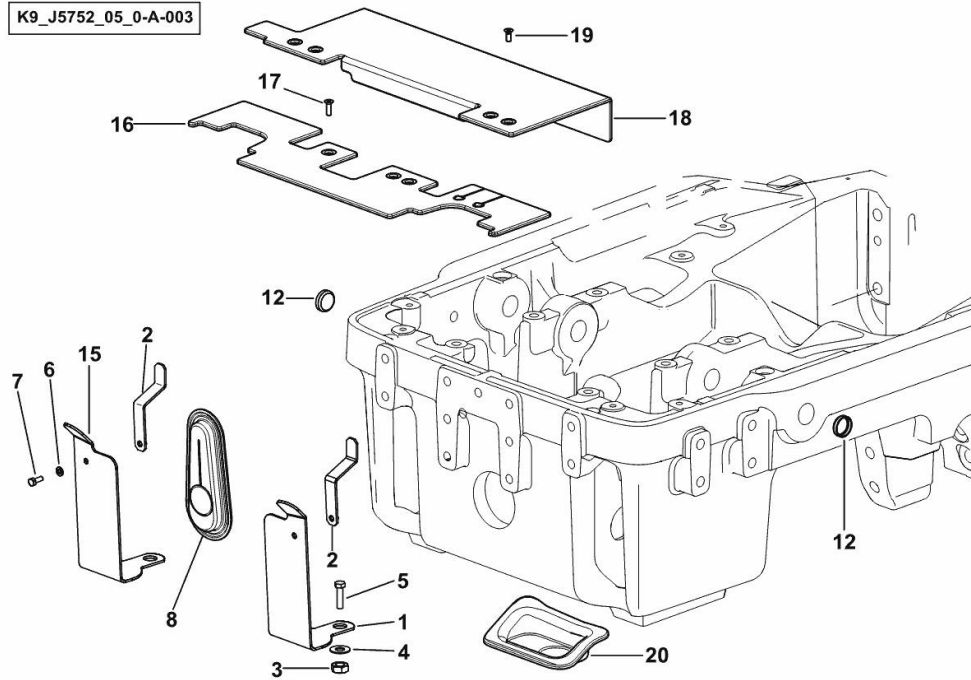
FRONT SUPPORT PACKAGE

Fig.	P/n	QTY	Name
------	-----	-----	------

Notes:

- FOR TYPES WITHOUT FRONT PTO AND FRONT LIFT [IRON³ 190 DCR ->ZKDU0502W0LS10010]

K9_J5752_05_0-A-003



1	0.011.6326.0	1	bracket sx/lh/li
2	0.011.6329.3	2	bracket
3	2.1011.109.2	2	nut m 16 p.2
4	2.1310.010.2	2	flat washer 17x30
5	2.0112.622.2	2	screw m 16 p.2x65
6	2.1310.002.2	2	flat washer 6.4x12.5
7	2.0112.004.2	2	screw m 6 p.1 x 14
8	0.017.8315.0	1	closure
12	2.3171.012.4	2	plug Ø 30
15	0.011.6398.0	1	bracket dx/rh/re
16	0.017.3928.3/20	1	closure
17	2.0342.205.3	3	screw m 6 p.1 x 20
18	0.017.3927.3/10	1	closure
19	2.0342.203.3	4	screw m 6 p.1.0 x 16
20	0.017.5898.0	1	closure

Thank you so much for reading.
Please click the “Buy Now!”
button below to download the
complete manual.



After you pay.

You can download the most
perfect and complete manual in
the world immediately.

Our support email:

ebooklibonline@outlook.com