

Section: ENGINE  
**CRANKCASE**

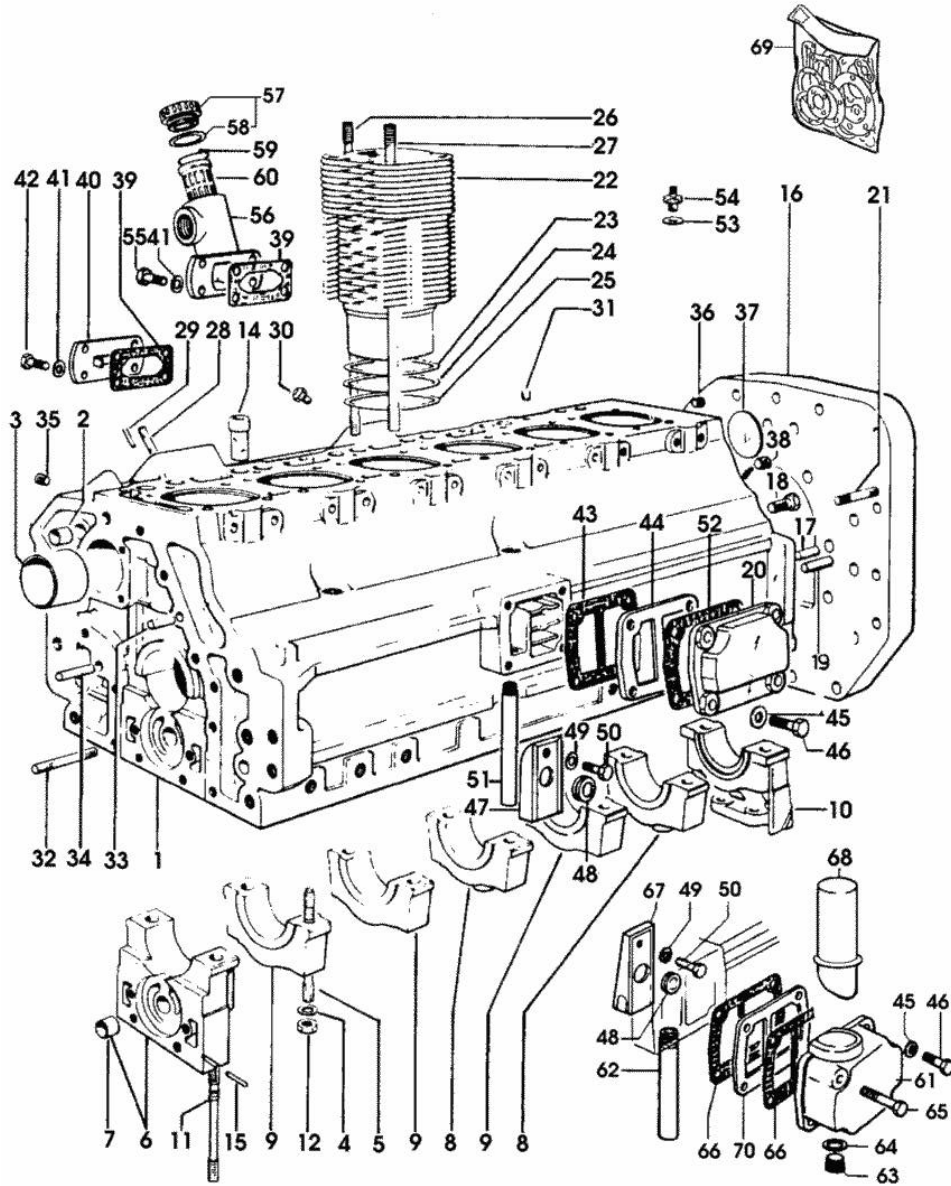
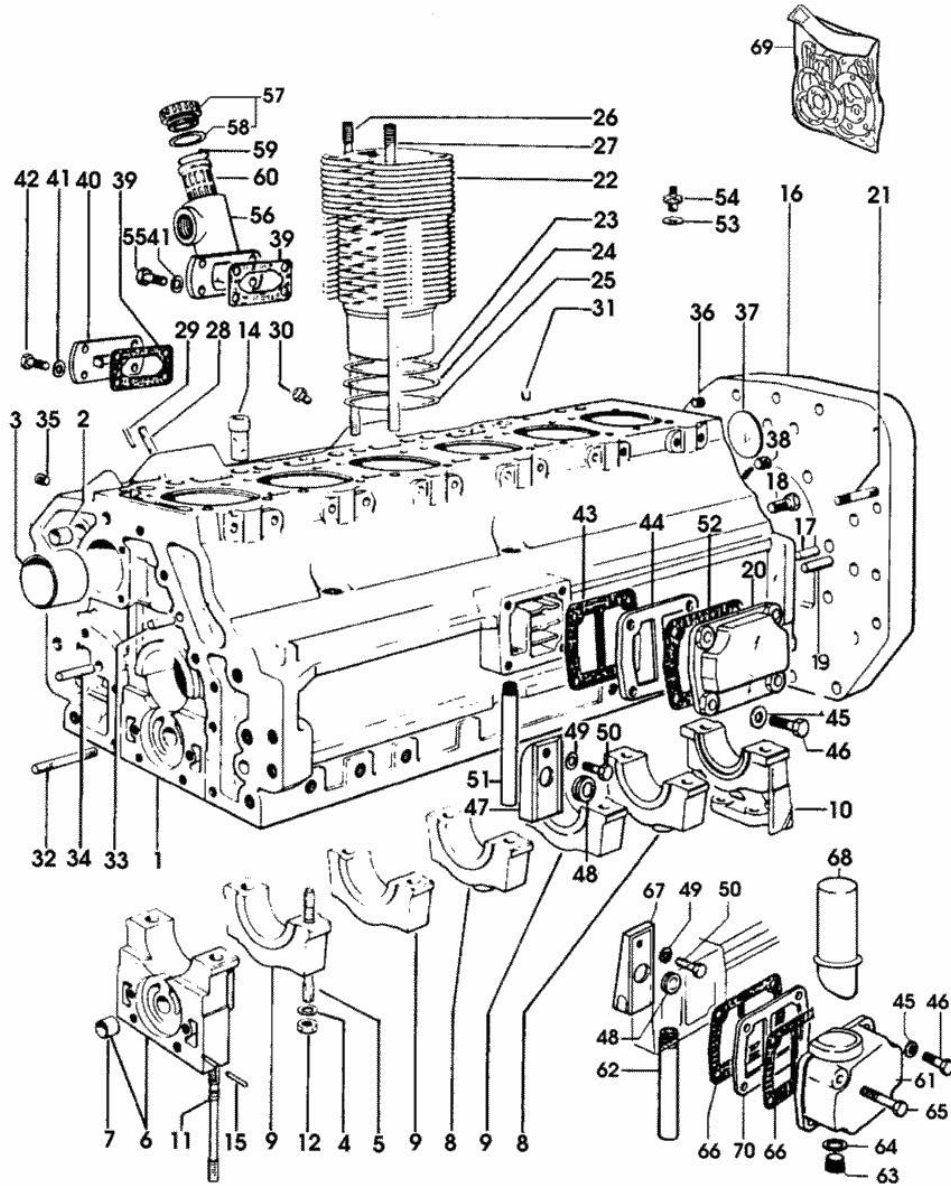


Fig.	P/n	QTY	Name
<b>Notes:</b> [LASER 150]			
1	0.071.1110.4/30	1	crankcase * (...) <- - N.1 044.1153.0/10 - N.1 071.1154.0 - N.4 2.0112.211.2 - N.1 071.1153.0 - N.1 071.1156.0 - N.1 071.1155.2
2	2.1559.111.0/10	2	special bushing 11.5x14.1x10
3	0.037.1155.0	1	bushing
4	2.1599.318.7	14	flat washer
5	0.052.1150.0	10	stud bolt
6	0.071.1112.3	1	support
7	2.1559.090.0/10	1	bushing 14.24x19.06x27
8	0.052.1113.0	2	support
9	0.052.1114.0	3	support
10	0.052.1116.0	1	support
11	0.052.1151.0	4	stud bolt
12	2.1099.064.7	14	special nut
14	0.044.1156.0	12	special bushing
15	0.029.1154.0/10	4	gasket
16	0.071.1150.0	1	flange
17	2.1651.911.0	2	cylindrical plug
18	2.0112.513.2	11	screw m 14 p.2 x 35
19	2.1653.708.0	2	pin 8x18 10173 <=
20	0.071.1154.0	1	small cover * (...) <= - N.1 044.1153.0/10 - N.1 071.1153.0 - N.4 2.0112.211.2 - N.1 071.1155.2
21	2.0432.257.7	2	stud bolt m 12 p.1.75 - 1.25 x 30
22	0.071.1120.0/50	6	engine cylinder
23	2.1589.052.0	12	shoulder ring 115x123x0.2
24	2.1589.051.0	6	shoulder ring 116x123x0.1
25	2.1569.076.0	6	gasket 116x123x0.5
26	0.041.1123.0/10	6	stud bolt
27	0.039.1122.0	24	stud bolt m 12 p.1.5x310
28	2.0432.003.7	8	stud bolt m 8 p.1.25 / p.1 x 20
29	2.1651.306.0	2	cylindrical plug
30	0.074.1151.3/10	6	valve
31	2.3130.001.1	3	plug 1/8" gas
32	2.0432.025.7	2	stud bolt m 8 p.1.25 - 1.00 x 100
33	2.1651.711.0	1	pin 8 x 14
34	2.1699.114.0	1	pin 8x55
35	2.3139.001.1	5	plug

258\_003

Section: ENGINE  
CRANKCASE



258\_003

Fig.	P/n	QTY	Name
36	2.3130.002.1	1	plug 1/4" gas
37	2.3170.022.1	1	expansion plug 60
38	2.3130.003.1	2	plug 3/8" gas
39	0.044.1151.0	2	gasket
40	0.044.1164.2/10	1	small cover
41	2.1310.004.2	4	flat washer 8.4x17
42	2.0112.205.2	3	screw m 8 p.1.25 x 16
42	2.0112.209.2	2	screw m 8 p 1.25 x 25
43	0.044.1153.0/10	1	gasket
44	0.071.1153.0	1	small cover
			* (...) <=
			- N.1 044.1153.0/10 - N.1 071.1154.0
			- N.4 2.0112.211.2 - N.1 071.1155.2
45	2.1474.009.2	4	spring washer 8
46	2.0112.211.2	3	screw m 8 p.1.25 x 30
47	0.044.1155.2/20	1	cover
			(...) <=
48	0.071.1156.0	1	special oil seal
49	2.1480.014.1	1	washer 8
50	2.0312.206.2	1	screw m 8 p 1.25 x 20
51	0.044.1152.0/10	1	tube
			11363 <=
52	0.044.1153.0/10	1	gasket
			=> (...)
52	0.044.1161.0	1	gasket
			(...) <=
53	2.1560.006.0	2	gasket 10.2 x 16
54	0.054.1150.0	2	pipe fitting
55	2.0112.205.2	4	screw m 8 p.1.25 x 16
55	2.0112.209.2	2	screw m 8 p 1.25 x 25
55	2.0112.211.2	2	screw m 8 p.1.25 x 30
56	0.062.1150.0/10	1	pipe union
			1324 <=
56	0.062.1151.0	1	flange
			=> 1325
57	0.041.1135.4	1	plug 1" gas
58	2.1569.072.0	1	gasket 32 x 39.5 x 2
59	2.1411.012.1	1	circlip 30
60	0.041.1159.0/10	1	filter
61	0.074.1153.0	1	flange
			=> 11364
62	0.074.1155.2	1	tube
			=> 11364
63	2.3130.004.1	1	plug 1/2 gas

Section: ENGINE  
CRANKCASE

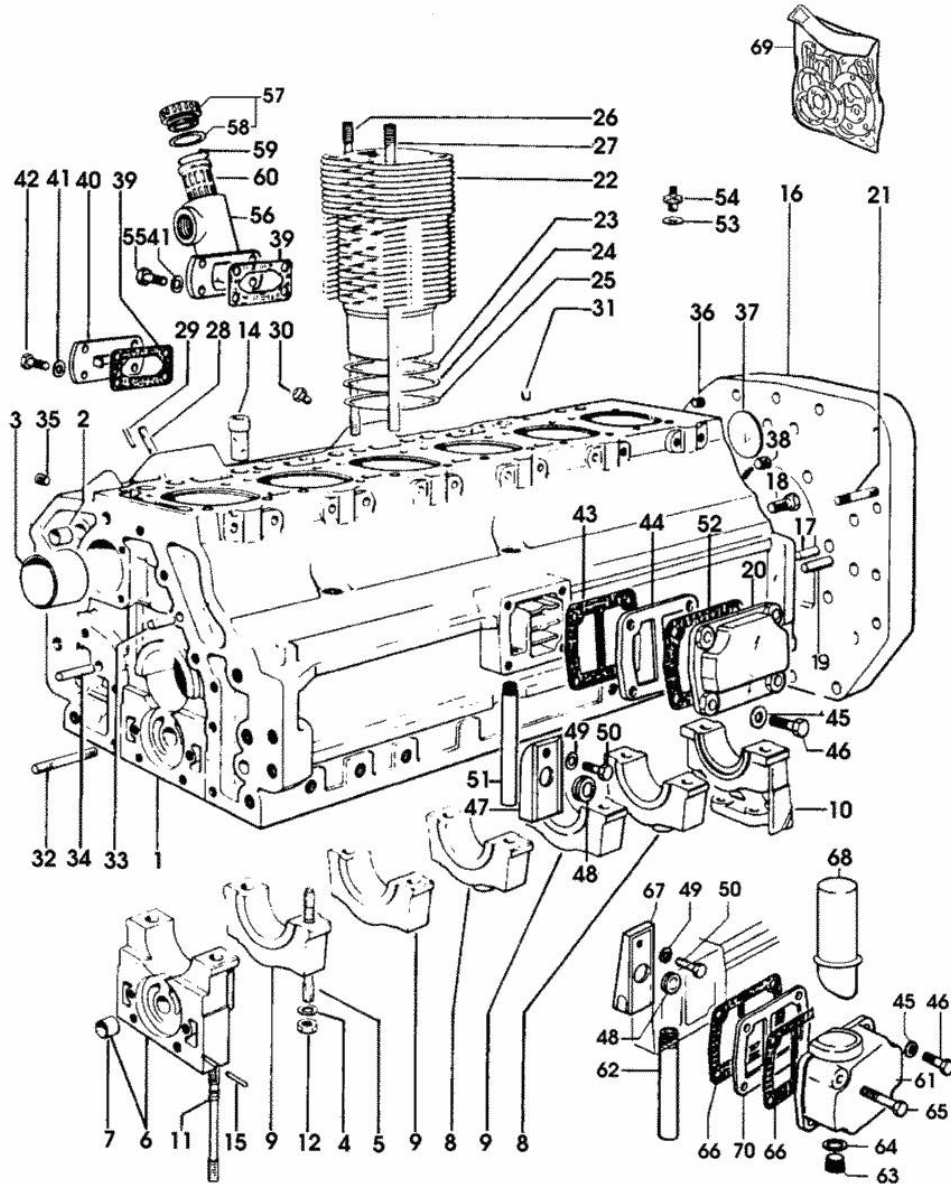


Fig.	P/n	QTY	Name
64	2.1560.055.0	1	=> 11364 gasket 27.3x31.9
65	2.0112.225.2	1	=> 11364 screw m 8 p.1.25 x 80
66	0.044.1153.0/10	2	=> 11364 gasket
67	0.071.1155.2	1	=> (...) small guard
68	0.074.1154.2	1	tube
69	0.071.0050.6	1	gasket set - FOR ENGINE MOUNTING
70	0.071.1153.0	1	small cover

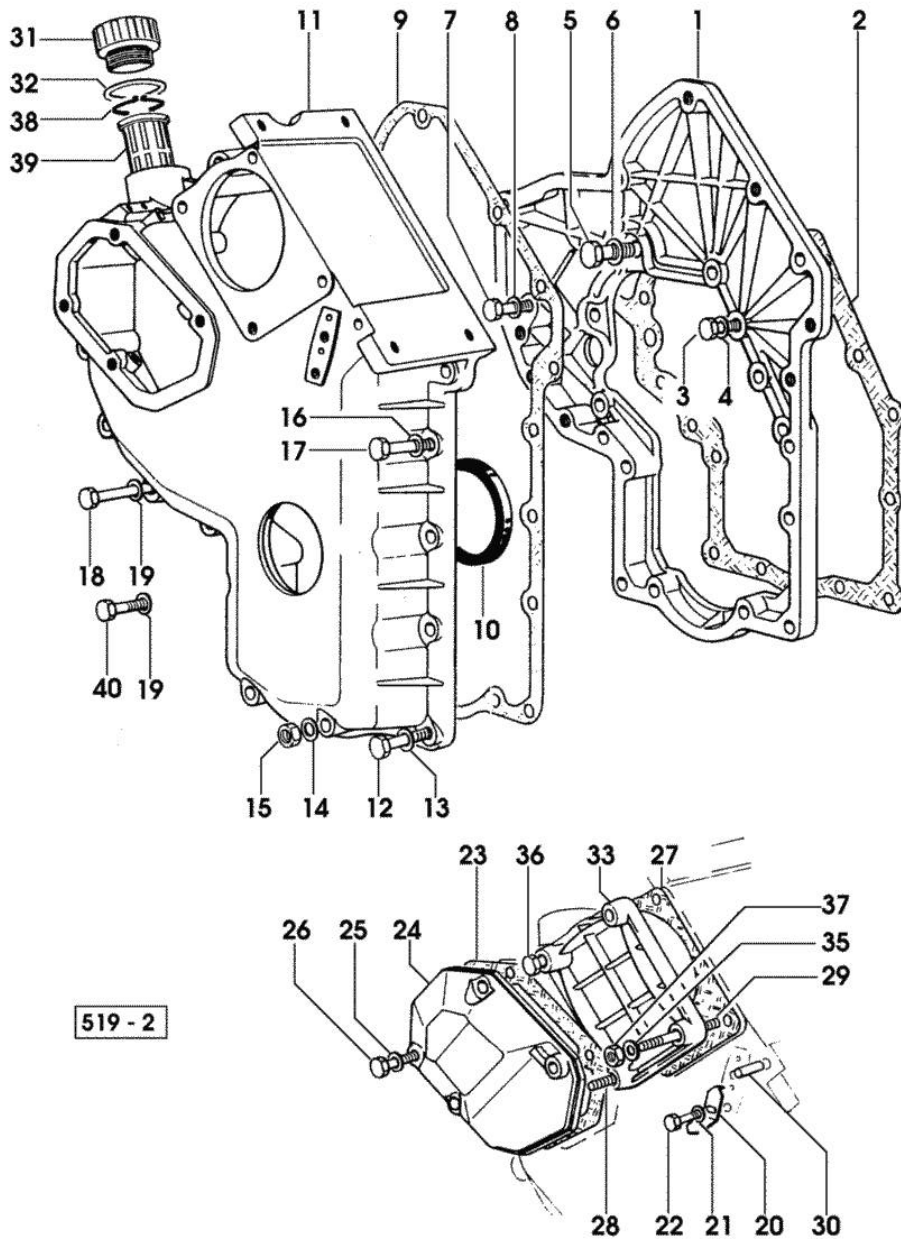
258\_003

Section: ENGINE  
TIMING CASE

Fig.	P/n	QTY	Name
------	-----	-----	------

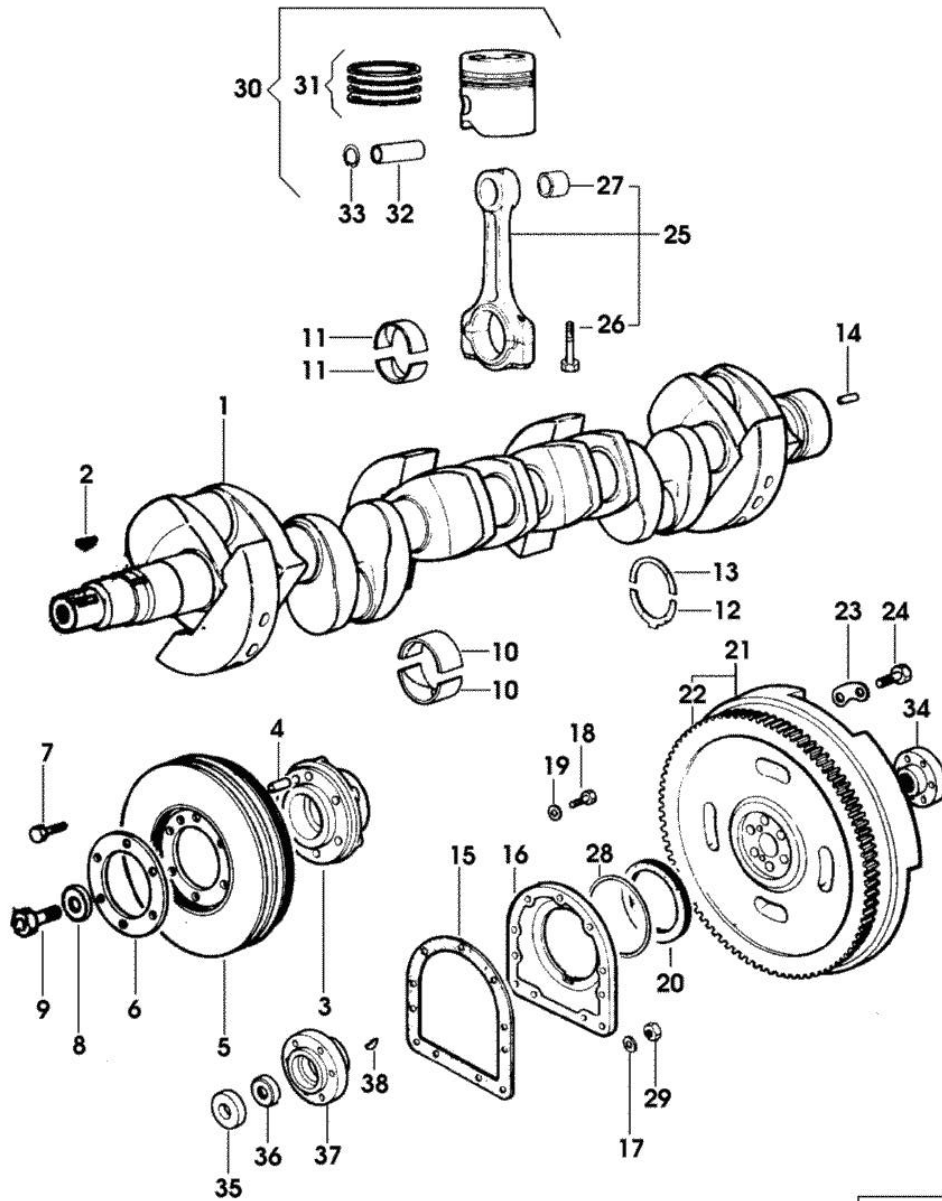
Notes:  
[LASER 150]

1	0.048.1131.0	1	flange
2	0.041.1153.0/10	1	gasket
3	2.0112.209.2	2	screw m 8 p 1.25 x 25
4	2.1470.009.2	2	lock washer 16
5	2.0119.034.1	1	screw m 14 p.2x20
6	2.1560.010.0	1	gasket 14.2 x 20
7	2.0112.207.2	1	screw m 8 p 1.25 x 20
8	2.1470.009.2	1	lock washer 16
9	0.041.1152.0/10	1	gasket
10	2.1519.010.0	1	special oil seal 58x80x10
11	0.048.1132.0/40	1	guard
12	2.0112.219.2	5	screw m 8 p.1.25x55
13	2.1470.009.2	5	lock washer 16
14	2.1560.003.0	2	copper gasket 8.2 x 12
15	2.1011.405.2	2	nut m 8 p.1
16	2.1470.009.2	5	lock washer 16
17	2.0112.211.2	5	screw m 8 p.1.25 x 30
18	2.0112.223.2	4	screw m 8 p.1.25x70
19	2.1470.009.2	4	lock washer 16
20	0.041.1158.0	1	index
21	2.1310.004.2	1	flat washer 8.4x17
22	2.0112.205.2	1	screw m 8 p.1.25 x 16
23	0.048.1151.0/10	1	gasket
24	0.048.1150.0/20	1	cover
25	2.1560.006.0	4	gasket 10.2 x 16
26	2.0112.315.2	4	screw m 10 p.1.5 x 40
27	0.041.1154.0	1	gasket
28	2.0432.015.7	1	stud bolt m 8 p.1.25-1x50
29	2.0432.028.7	3	stud bolt m 8 p.1.25-1x130
30	2.1653.717.0	1	pin 8 x 40
31	0.041.1135.4	1	plug 1" gas
32	2.1569.072.0	1	gasket 32 x 39.5 x 2
33	0.037.1151.0/10	1	cover
35	2.1310.004.2	4	flat washer 8.4x17
36	2.0112.235.2	1	screw m 8 p.1.25 x 130
37	2.1011.505.2	3	nut m 8 p.1
38	2.1411.012.1	1	circlip 30
39	0.041.1159.0/10	1	filter
40	2.0112.209.2	2	screw m 8 p 1.25 x 25



Section: ENGINE

**CRANKSHAFT**

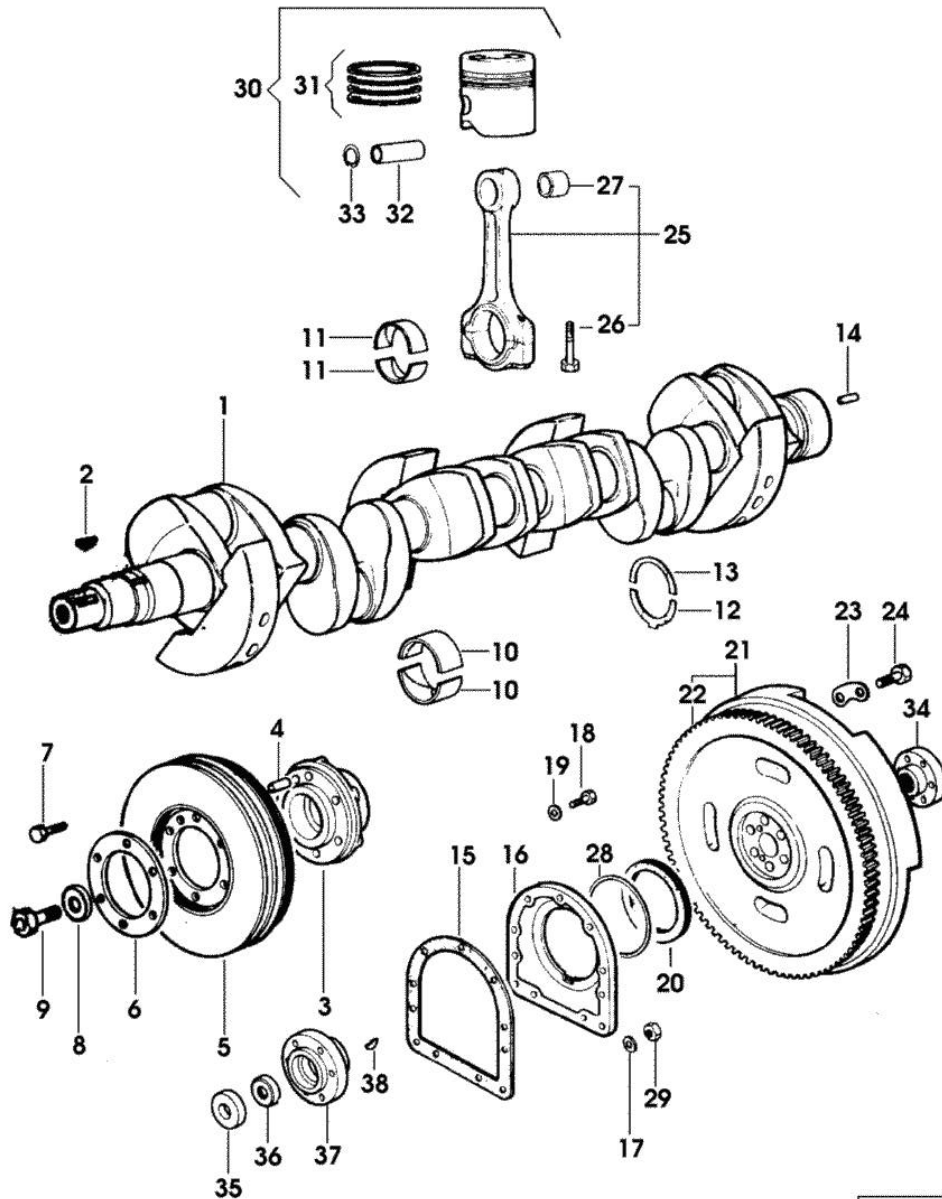


258\_006

Fig.	P/n	QTY	Name
<b>Notes:</b>			
[LASER 150]			
1	0.037.1210.4/30	1	crankshaft * 10975 <= X 110HP * 20585 <= X 130HP * 10407 <= X 150HP - N 1 2.1799.026.0
2	2.1799.002.0	1	stick 10x13 10975 <= X 110HP 20585 <= X 130HP 10407 <= X 150HP
2	2.1799.026.0	1	key 10x10 => 10976 X 110HP => 20586 X 130HP => 10408 X 150HP
3	0.037.1250.0/10	1	hub
4	2.1651.909.0	1	cylindrical plug 12 x 20
5	0.046.1246.3	1	antivibration pulley - X 110HP - X 130HP
5	0.071.1246.3/10	1	antivibration pulley - X 150HP
6	0.037.1255.0	1	flange
7	2.0122.461.1	6	screw m 12 p.1.25x30
8	0.001.6020.0	1	shoulder
9	2.0129.032.2	1	screw m 24 p.2x45
10	0.073.0059.0		main half bushing - mm 1.00
10	0.073.1215.0	14	main half bushing STANDARD
10	0.073.1215.7		main half bushing - mm 0.25
10	0.073.1215.8		main half bushing - mm 0.50
10	0.073.1215.9		main half bushing - mm 0.75
11	0.062.0059.0		con.rod half bushing - mm 1.00
11	0.062.1225.0	12	con.rod half bushing STANDARD
11	0.062.1225.7		con.rod half bushing - mm 0.25
11	0.062.1225.8		con.rod half bushing - mm 0.50
11	0.062.1225.9		con.rod half bushing - mm 0.75
12	0.001.4547.0		shoulder ring + mm 0.05
12	0.001.4548.0		shoulder ring + mm 0.10
12	0.001.4549.0		shoulder ring + mm 0.15
12	0.042.1219.0	2	shoulder ring STANDARD
13	0.001.4544.0		shoulder ring + mm 0.05
13	0.001.4545.0		shoulder ring + mm 0.10
13	0.001.4546.0		shoulder ring + mm 0.15

Section: ENGINE

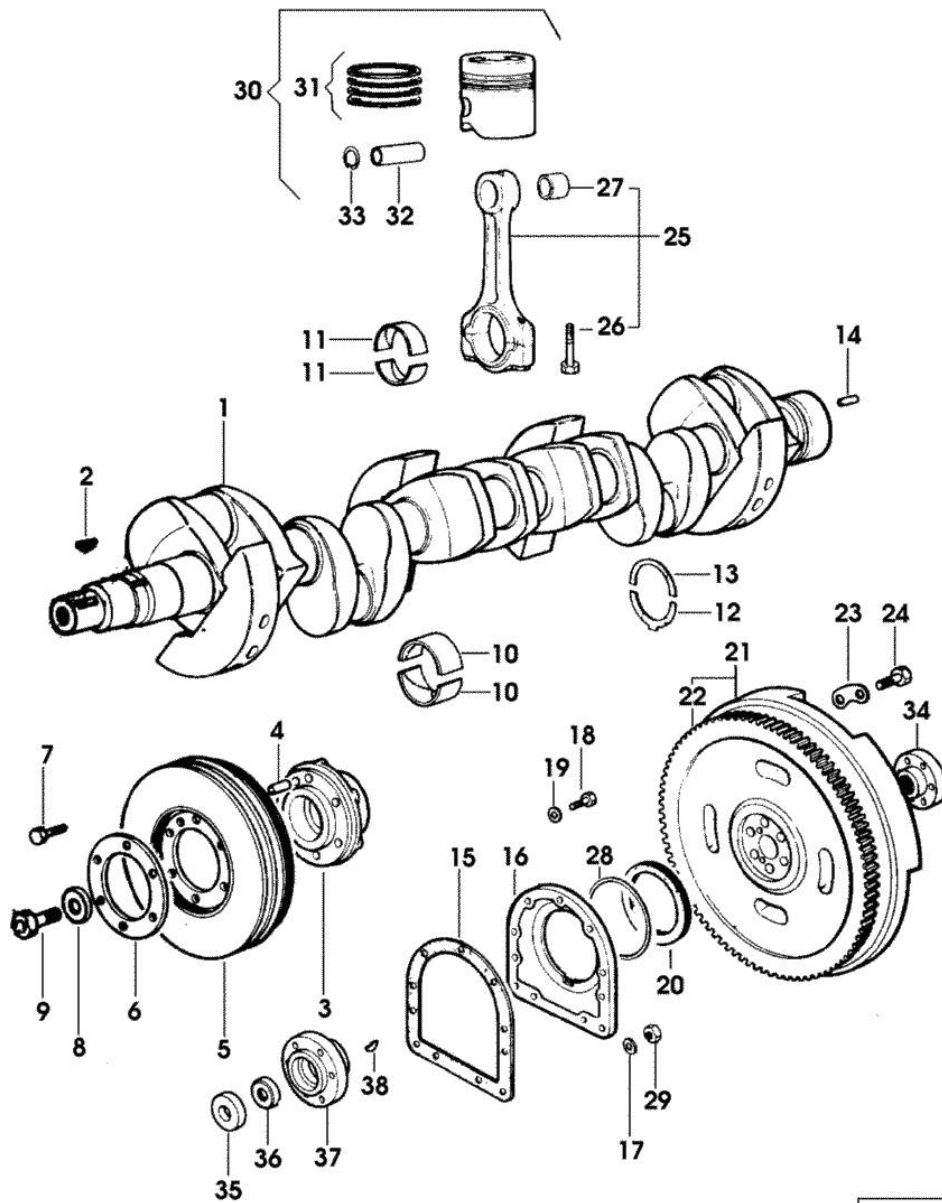
CRANKSHAFT



258\_006

Fig.	P/n	QTY	Name
13	0.042.1218.0	2	shoulder ring STANDARD
14	2.1652.915.0	2	cylindrical plug 12x35
15	0.029.1250.0/10	1	gasket
16	0.029.1240.0/10	1	flange
			10564 <= X 110HP
			20306 <= X 130HP
			10173 <= X 150HP
16	0.045.1240.0	1	flange
			=> 10565 X 110HP
			=> 20307 X 130HP
			=> 10174 X 150HP
17	2.1560.006.0	2	gasket 10.2 x 16
18	2.0112.309.2	9	screw m 10 p.1.5 x 25
19	2.1474.010.2	2	washer 10
19	2.1480.015.1	7	washer 10
20	2.1519.009.0/10	1	special oil seal
21	0.046.1256.3	1	flywheel
22	0.047.1242.0	1	crown wheel z=128
23	2.1379.006.0	3	lock-tab 15x15x36,5
24	2.0122.517.7	6	screw m 14 p.1.5x45
25	0.039.1220.3/30	6	engine connecting rod
26	0.039.1250.0	12	screw m 14 p.1.5x63
27	2.1559.114.0/10	6	special bushing
28	2.1599.404.0	1	shoulder ring
29	2.1011.321.2	2	nut m 10 p.1.25
30	0.052.0060.6/30	6	complete piston STANDARD
			- X 150HP
30	0.052.0061.6/30		complete piston + mm 0.50
			- X 150HP
30	0.052.0062.6/30		complete piston + mm 1.0
			- X 150HP
30	0.072.0060.6	6	complete piston STANDARD
			- X 110HP
30	0.072.0061.6		complete piston + mm 0.50
			- X 110HP
30	0.072.0062.6		complete piston + mm 1.0
			- X 110HP
30	0.073.0060.6	6	complete piston STANDARD
			- X 130HP
30	0.073.0061.6		complete piston + mm 0.50
			- X 130HP
30	0.073.0062.6		complete piston + mm 1.0
			- X 130HP
31	0.042.0052.6	6	piston ring set STANDARD

Section: ENGINE  
CRANKSHAFT



258\_006

Fig.	P/n	QTY	Name
31	0.042.0053.6		- X 130HP piston ring set + mm 0.50
31	0.042.0054.6		- X 130HP piston ring set + mm 1.0
31	0.071.0052.6/30	6	- X 130HP piston ring set
31	0.071.0053.6/30		- X 150HP piston ring set + mm 0.50
31	0.071.0054.6/30		- X 150HP piston ring set + mm 1.0
31	0.072.0052.6	6	- X 150HP piston ring set STANDARD
31	0.072.0053.6		- X 110HP piston ring set + mm 0.50
31	0.072.0054.6		- X 110HP piston ring set + mm 1.0
32	0.002.4167.0	6	- X 110HP piston pin
32	0.038.1236.0/10	6	- X 110HP piston pin Ø 18 / Ø 35 / L = mm 90
33	2.1411.014.1	12	- X 130HP circlip 35
34	0.170.3650.0	1	flange
35	0.035.1263.0	1	ring
36	0.035.1262.0	1	- X 130HP spacer
37	0.037.1256.0/10	1	- X 130HP hub
38	2.1799.027.0	1	- X 130HP key

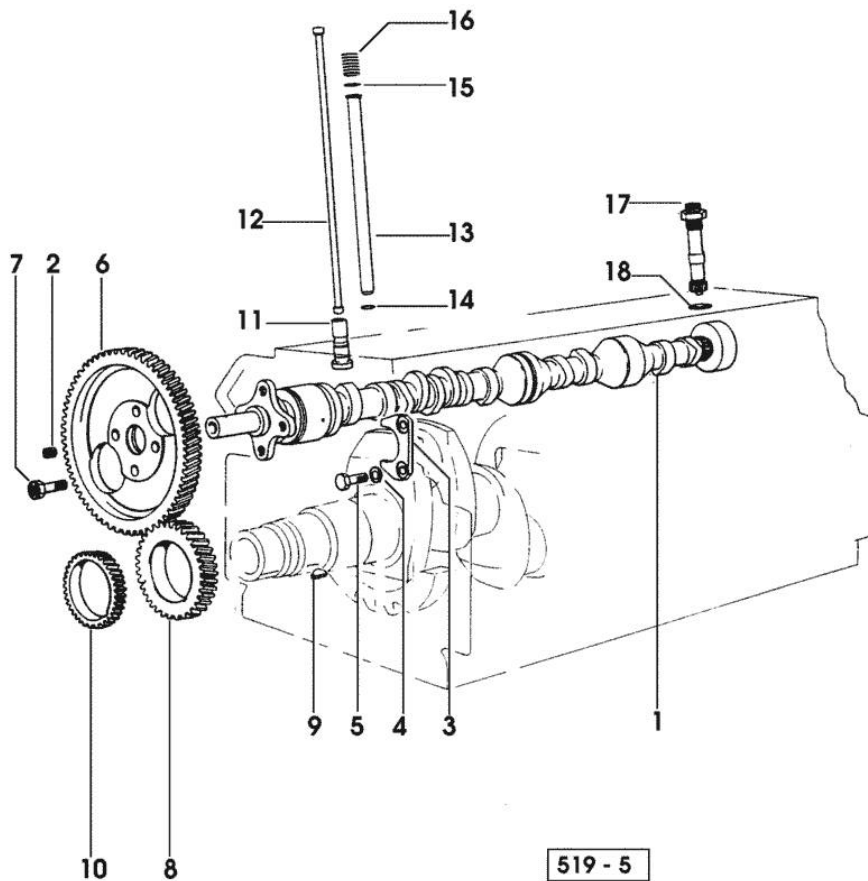
Section: ENGINE

**CAMSHAFT**

Fig.	P/n	QTY	Name
------	-----	-----	------

Notes:  
[LASER 150]

1	0.046.1310.0/10	1	camshaft - EXPORT U.S.A. - X 110HP - X 130HP
1	0.047.1310.0/40	1	camshaft - X 110HP - X 130HP
1	0.071.1310.0	1	camshaft - X 150HP
2	2.3130.001.1	1	plug 1/8" gas
3	0.027.1314.0/10	1	plate
4	2.1470.004.2	2	lock washer 8
5	2.0112.207.2	2	screw m 8 p 1.25 x 20
6	0.062.1321.0	1	gear z=66
7	2.0139.005.1	4	screw m 10 p.1 x 25
8	0.040.1320.0	1	gear z = 33
9	2.1720.010.0	1	key 5x9
10	0.040.1323.0/10	1	gear Z = 38
11	0.052.1330.0/20	12	tappets
12	0.041.1331.3	12	rod - X 110HP - X 130HP
12	0.052.1331.3	12	rod - X 150HP
13	0.041.1332.0	12	sleeve
14	2.1539.020.0	12	special oil seal 13.95x2.62
15	2.1539.022.0	12	special oil seal 12.37x2.62
16	2.4019.162.1/20	12	spring 17.2x46x1.8
17	0.041.1355.3	1	transmission
18	2.1560.014.0	1	washer 18.2 x 24





Section: ENGINE  
CYLINDER HEAD

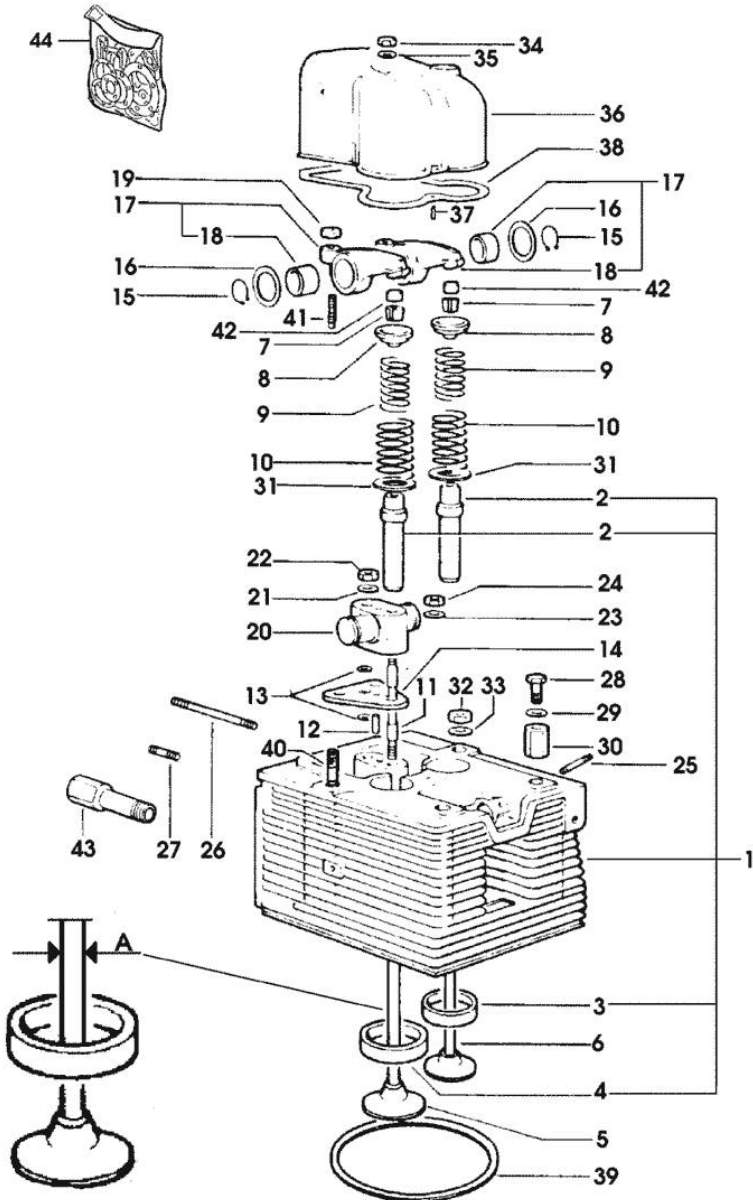


Fig.	P/n	QTY	Name
------	-----	-----	------

Notes:  
[LASER 150]

1	0.071.1410.3	5	engine head A = mm 8
1	0.071.1410.3/20	5	engine head A = mm 9
1	0.071.1411.3	1	engine head A = mm 8
1	0.071.1411.3/20	1	engine head A = mm 9 - FOR MOUNTING OF SENDER UNIT
2	0.006.1952.0	12	valve guide A = mm 9
2	0.071.1416.0	12	valve guide A = mm 8
3	0.052.1452.0	6	valve seat
4	0.052.1451.0/10	6	valve seat
5	0.009.7264.2	6	inlet valve Ø mm 9 A = mm 9
5	0.071.1420.2	6	exhaust valve Ø mm 8 A = mm 8
6	0.009.7265.2	6	exhaust valve Ø mm 9 A = mm 9
6	0.071.1421.2	6	exhaust valve Ø mm 8 A = mm 8
7	0.062.1423.0/10	12	conical valve cotter A = mm 8
7	0.074.1423.0	12	conical valve cotter A = mm 9
8	0.002.9215.0/20	12	cup A = mm 9
8	0.062.1425.0	12	cup A = mm 8
9	2.4019.279.7	12	spring
10	2.4019.280.7	12	spring
11	0.052.1455.0	6	stud bolt
12	2.1653.509.0	6	cylindrical plug 6x20
13	2.1532.035.0	12	oil seal 14x1.78
14	0.052.1454.0	6	small plate
15	2.1410.055.1	12	circlip 19
16	2.1599.019.0	12	shoulder ring 19.5x31x2
17	0.052.1432.3/10	12	rocker arm
18	2.1559.021.0/40	2	bushing 15x19x22

258\_010

Section: ENGINE  
CYLINDER HEAD

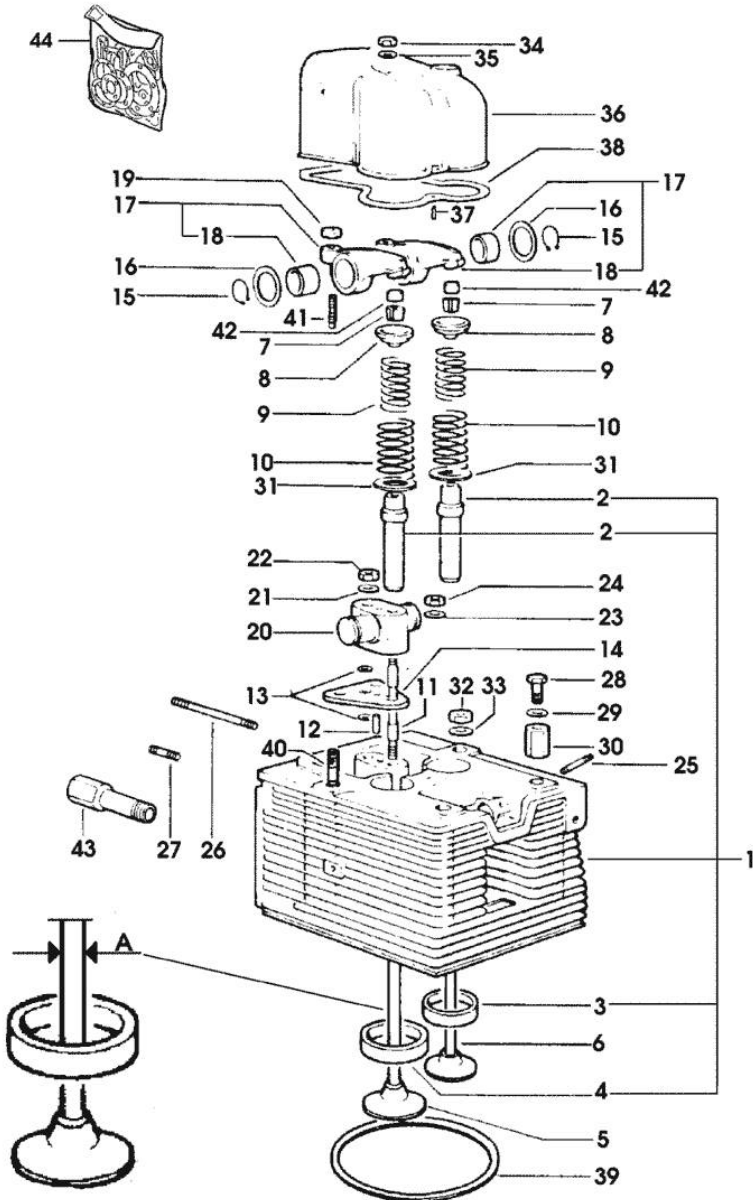


Fig.	P/n	QTY	Name
19	2.1011.405.2	12	nut m 8 p.1
20	0.052.1430.0	6	support
21	2.1310.006.2	6	flat washer 10.5x21
22	2.1099.035.0	6	special nut m 10 p.1.25
23	2.1599.160.0	6	washer 10.5x19x4
24	2.1011.321.2	6	nut m 10 p.1.25
25	2.0439.111.1/20	12	stud bolt
26	2.0439.113.7	6	stud bolt m 8 p.1.25 - 1.00 x 110
26	2.0439.143.7	5	stud bolt m 8 p.1.25 x 90
26	2.0439.157.7	6	stud bolt m 8 p.1.25 - 1.00 x 100
27	2.0439.061.2	2	stud bolt m 8 x 35
27	2.0439.110.7	12	stud bolt m 8 x 30
28	2.0119.053.1	4	screw
29	2.1310.007.2	4	flat washer 13 x 24
30	2.1019.037.0	4	special nut m 12 p.1.5
31	2.1599.411.2	12	shoulder ring
32	2.1019.025.0	20	special nut m 12 p.1.5
33	2.1599.144.7	24	shoulder ring 12.5x23x4
34	2.1099.056.2	6	special nut m 8 p.1 x 8
35	2.1560.004.0	6	copper gasket 8.2 x 14
36	0.052.1440.0	6	small cap
37	2.1630.208.0	6	roll pin 3x16
38	0.052.1453.0/20	6	tappet gasket
39	2.1589.157.0	6	shoulder ring
40	2.0439.169.7	4	stud bolt
41	0.021.1434.0	12	screw
42	0.021.1453.0/20	12	small cover
42	0.062.1452.0	12	small cover
43	0.071.1450.0/10	1	pipe fitting
44	0.071.0057.6		gasket set

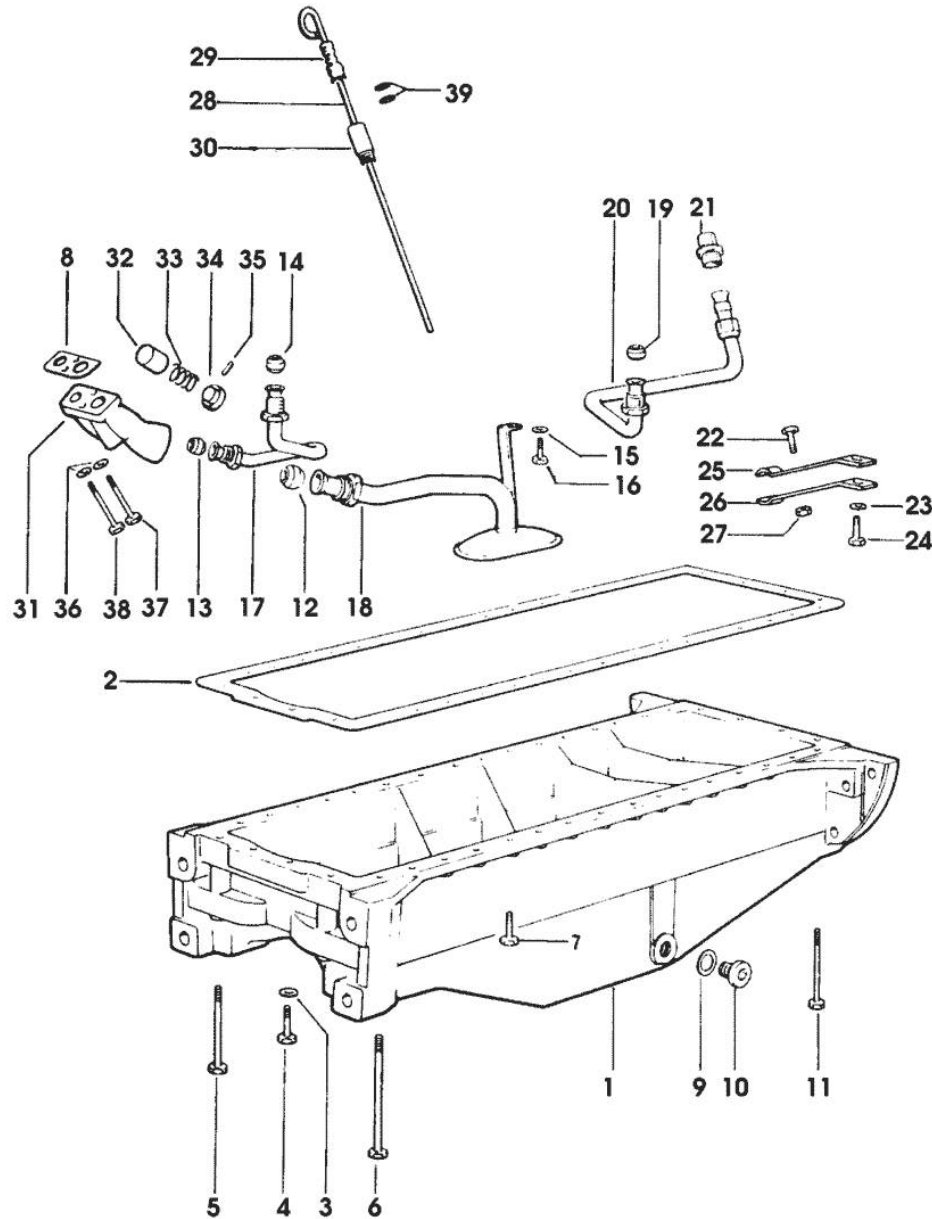
- FOR 1 CYLINDER VALVE GRINDING AND PISTON RINGS REPLACEMEN

Section: ENGINE  
LUBRICATION

Fig.	P/n	QTY	Name
------	-----	-----	------

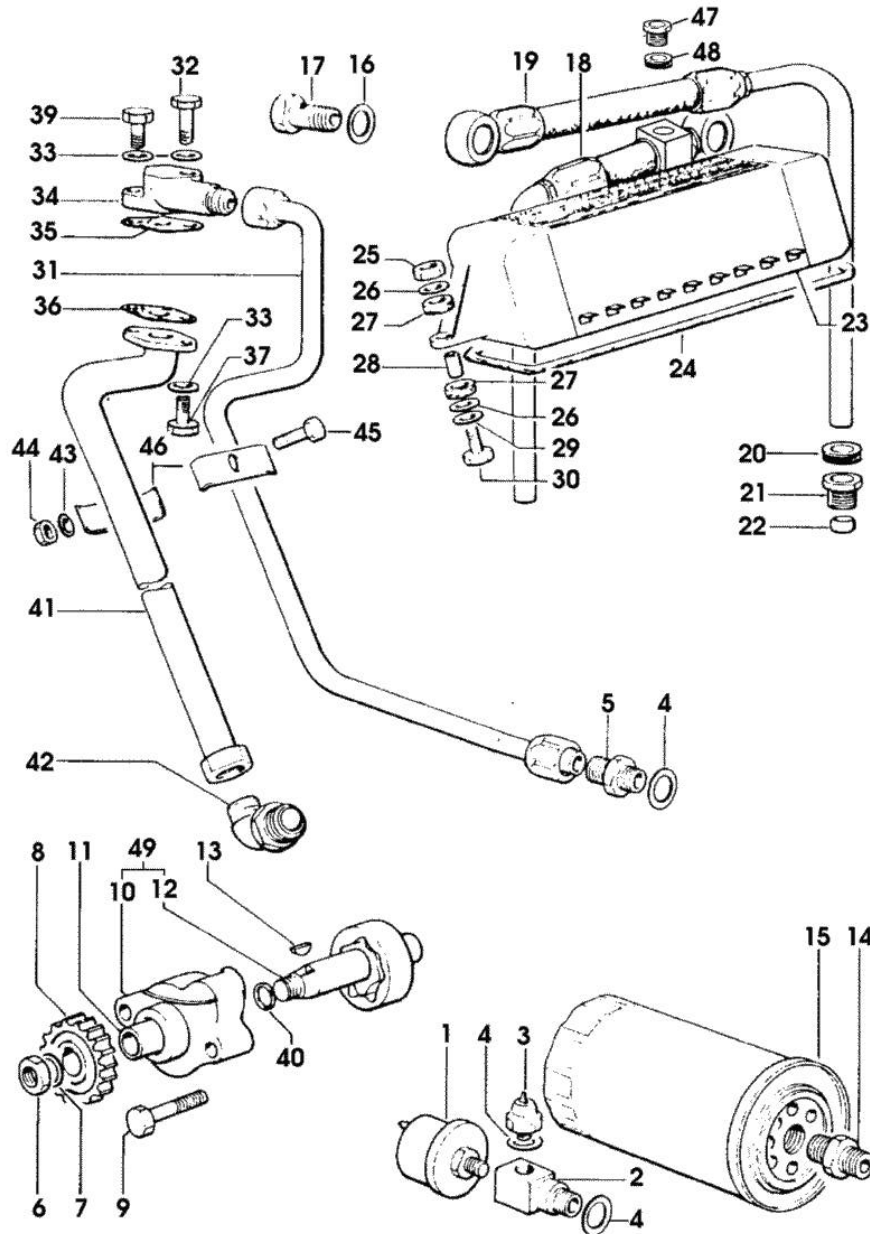
Notes:  
[LASER 150]

1	0.071.1510.0	1	oil sump
2	0.037.1512.0	1	gasket
3	2.1560.004.0	4	copper gasket 8.2 x 14
4	2.0112.219.2	2	screw m 8 p.1.25x55
5	2.0112.231.2	2	screw m 8 p.1.25 x 110
6	2.0112.244.2	2	screw m 8 p.1.25 x 180
7	2.0112.215.2	30	screw m 8 p.1.25 x 40
8	0.037.1557.0/20	1	gasket
9	2.1560.054.0	1	gasket 21 x 26
10	2.3199.001.2	1	plug 1/2" gas
11	2.0112.237.2	4	screw m 8 p.1.25x140
12	2.3359.017.1	1	nosepiece
13	2.3359.016.1	1	nosepiece
14	2.3359.015.1	1	nosepiece
15	2.1310.004.2	1	flat washer 8.4x17
16	2.0112.205.2	1	screw m 8 p.1.25 x 16
17	0.044.1560.2	1	tube
18	0.046.1531.3	1	tube
19	2.3359.015.1	1	nosepiece
20	0.046.1543.2/10	1	tube
21	2.3339.159.1/10	1	pipe fitting
22	2.0112.207.2	1	screw m 8 p 1.25 x 20
23	2.1310.004.2	1	flat washer 8.4x17
24	2.0112.207.2	1	screw m 8 p 1.25 x 20
25	0.046.1551.0	1	bracket
26	0.046.1550.0	1	bracket
27	2.1011.105.2	1	nut m 8 p.1.25
28	0.042.1513.2	1	dipstick
29	0.034.1551.0	1	gasket
30	0.044.1555.0	1	spacer
31	0.052.1530.0	1	tip
32	0.052.1571.0	1	small piston
33	2.4019.270.1	1	spring 9.7x54x2
34	0.054.1558.0/10	1	stop
35	2.1630.213.0	1	roll pin 3x32
36	2.1480.014.1	2	washer 8
37	2.0112.225.2	1	screw m 8 p.1.25 x 80
38	2.0112.231.2	1	screw m 8 p.1.25 x 110
39	2.1539.065.2	2	oil seal



258\_013

Section: ENGINE  
LUBRICATION



258\_014

Fig.	P/n	QTY	Name
<b>Notes:</b> [LASER 150]			
1	2.7099.270.0	1	device
2	0.071.1554.0	1	pipe fitting
3	2.7099.460.0	1	pressure switch
4	2.1560.008.0	3	gasket 12.2 x 18
5	2.3339.214.2	1	pipe fitting
6	2.1121.109.2	1	self-locking nut m 12 p.1.25
7	2.1310.007.2	1	flat washer 13 x 24
8	0.040.1521.0/10	1	gear z = 27
9	2.0112.219.2	2	screw m 8 p.1.25x55
10	0.071.1520.3/20	1	u bolt => 12701
11	2.1559.166.0	1	special bushing
12	0.071.1524.3/30	1	oil pump => 12701
13	2.1720.005.0	1	key 4x5
14	2.3339.094.1/10	1	pipe fitting m 20 p.1.5-3/4 gas
15	0.052.1565.0	1	oil filter element
16	2.1560.018.0	6	gasket 22.2 x 29
17	2.3339.107.1	2	pipe union m 22
18	0.007.1770.3/30	1	tube * (...) <- - N.1 2.1560.010.0 - N.1 2.3110.403.1
19	0.047.1551.2/30	1	tube
20	2.6560.013.0	2	wire guide 18x1.5
21	2.3339.167.2	2	pipe fitting
22	2.3359.012.0	2	nosepiece 10x16.8
23	0.071.1540.2/10	1	oil cooler 10112 <= => 10113
24	0.052.1541.0	1	gasket
25	2.1011.105.2	2	nut m 8 p.1.25
26	2.1599.006.2	4	shoulder ring 8.4x25x2
27	0.021.1560.0	4	rubber plug
28	2.1579.159.2	2	spacer 8.8x12x16
29	2.1310.004.2	2	flat washer 8.4x17
30	2.0122.213.2	2	screw m 8 p.1x35
31	0.071.1550.2/10	1	tube 1199 <= => 1325 - 10841 <=
31	0.071.1558.2/10	1	tube => 1325 - 10841 <=

**LUBRICATION**

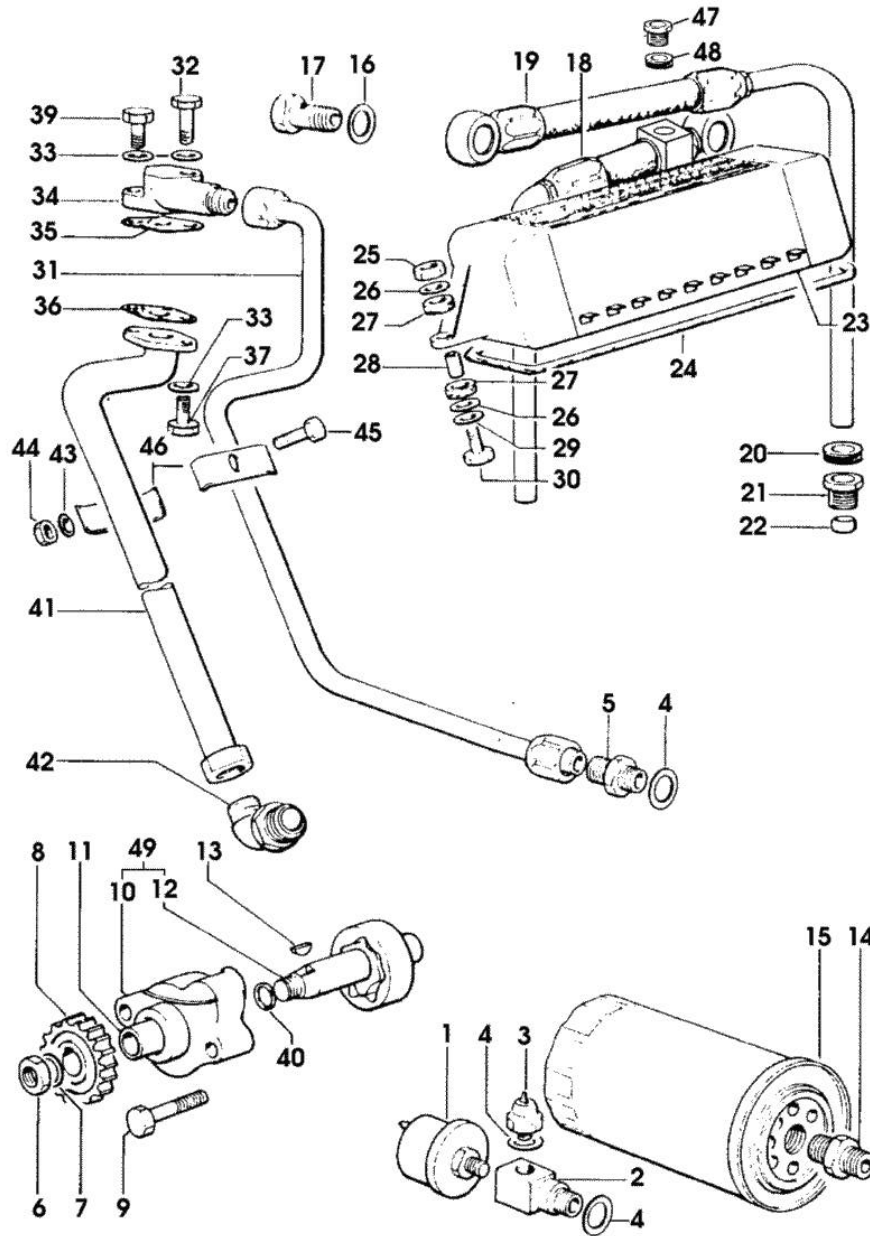
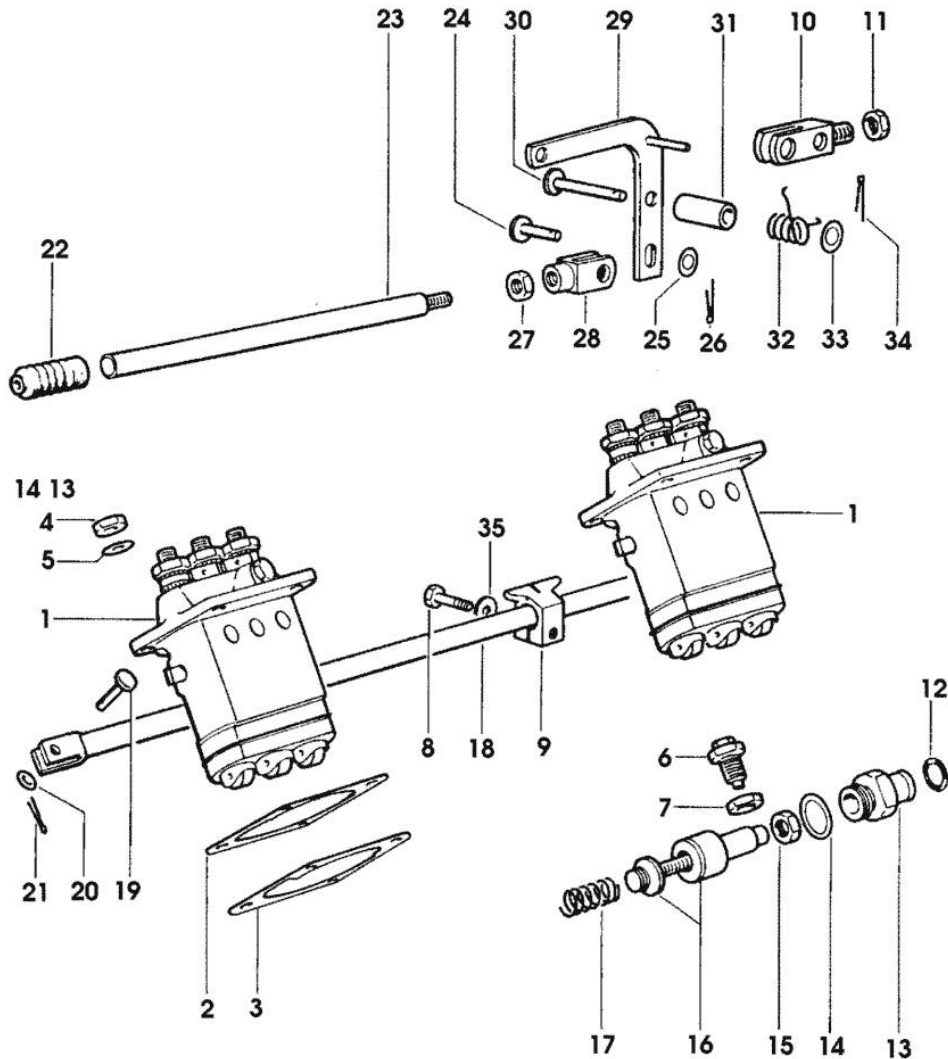


Fig.	P/n	QTY	Name
			=> 10842
31	0.074.1550.2	1	tube => 1200 - 1324 <=
32	2.0112.215.2	1	screw m 8 p.1.25 x 40
33	2.1470.004.2	4	lock washer 8
34	0.062.1550.0	1	flange
35	0.052.1557.0	1	gasket
36	0.052.1558.0/10	1	gasket
37	2.0112.207.2	2	screw m 8 p 1.25 x 20
39	2.0112.207.2	1	screw m 8 p 1.25 x 20
40	2.1530.043.0	1	oil seal 17.13x2.62
41	0.071.1551.3/10	1	tube 1199 <=
41	0.071.1557.3	1	tube => 1325
41	0.074.1551.3	1	tube => 1200 - 1324 <=
42	2.3261.119.2	1	pipe fitting (...) <-
43	2.1470.002.2	1	lock washer 6
44	2.1011.103.2	1	nut m 6 p.1
45	2.0112.015.2	1	screw m 6 p.1x40
46	0.9015.270.0	2	bracket 1324 <=
47	2.3110.403.1	1	plug m 14 p.1.5x12
48	2.1560.010.0	1	gasket 14.2 x 20
49	0.071.1524.6	1	oil pump 12700 <=

258\_014

Section: ENGINE  
**FUEL SUPPLY SYSTEM**



258\_017

Fig.	P/n	QTY	Name
<b>Notes:</b> [LASER 150]			
1	2.4639.090.0/10	2	injector pump F 27 ☞ 2.4639.090.0/10 ☞ 01.00.54
2	0.041.1658.0	4	shim mm 0.20
2	0.041.1659.0	2	shim mm 0.1
2	0.044.1672.0	2	shim mm 0.50
3	0.041.1694.0	4	gasket mm 0.1
3	0.041.1695.0	2	gasket mm 0.20
4	2.1099.056.2	8	special nut m 8 p.1 x 8
5	2.1311.006.2	8	flat washer 8
6	0.044.1669.3/20	1	adapter
7	2.1099.066.1	1	special nut
8	2.0112.007.2	1	screw m 6 p.1 x 20
8	2.0112.015.2	1	screw m 6 p.1x40
9	0.074.1653.0	2	bracket
10	0.044.1656.0	1	support
11	2.1011.506.2	1	nut m 10 p.1
12	2.1530.015.0	1	oil seal 8.30x2.40
13	0.041.1666.0/40	1	plug
14	2.1560.019.0	1	copper gasket 24.3x30
15	2.1011.505.2	1	nut m 8 p.1
16	0.041.1678.6/10	1	adapter - X 150HP
16	0.062.1652.6	1	adapter => 20162 X 130HP
17	2.4019.178.1/10	1	spring 14.6x34x0.8
18	0.041.1613.2	1	rod
19	2.1679.065.2	1	pin 6x18x15
20	2.1311.004.2	1	flat washer 6, d128
21	2.1690.206.2	1	split pin A2x15
22	0.000.5617.0	1	guard
23	0.044.1651.0/30	1	ferrule
24	2.1679.065.2	1	pin 6x18x15 - X 130HP - X 150HP
25	2.1310.002.3	1	flat washer 6.4 x 12 x 1.6
26	2.1690.206.2	1	split pin A2x15
27	2.1011.103.2	1	nut m 6 p.1
28	2.3510.003.2	1	fork m 6
29	0.048.1666.2	1	lever

**FUEL SUPPLY SYSTEM**

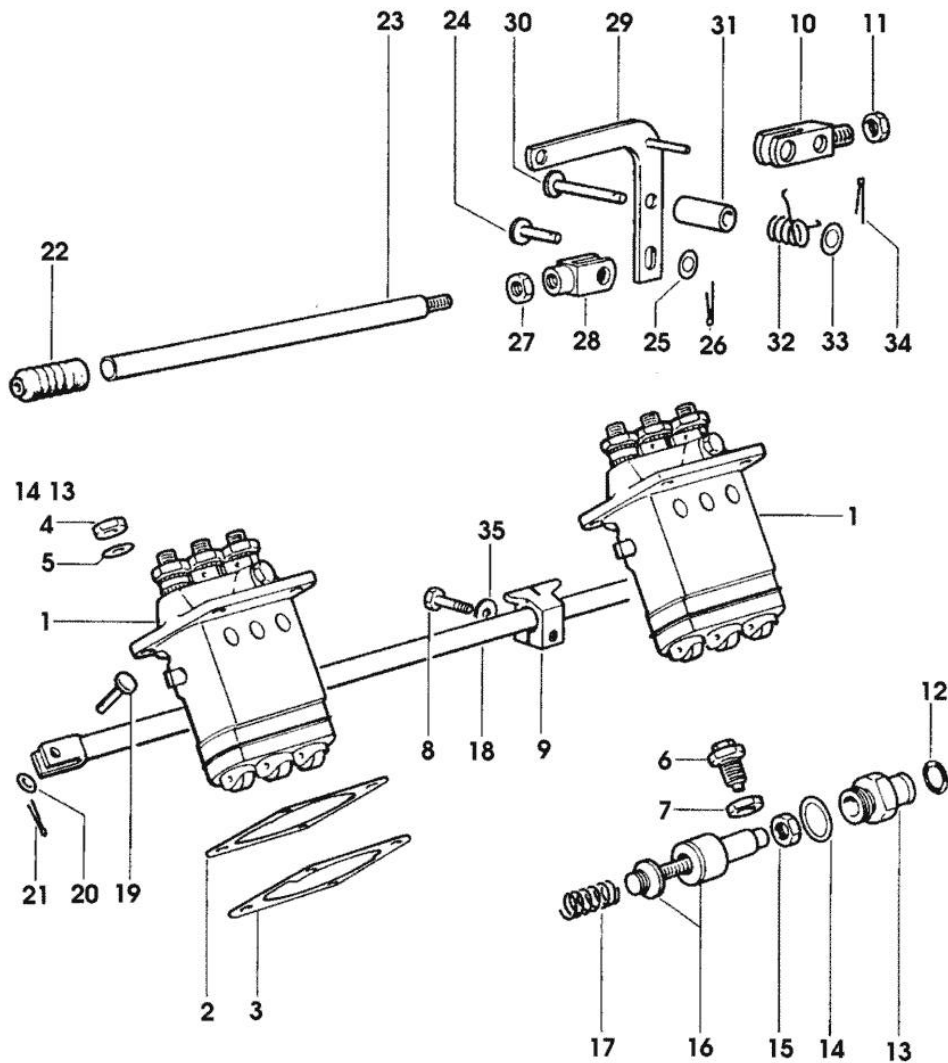
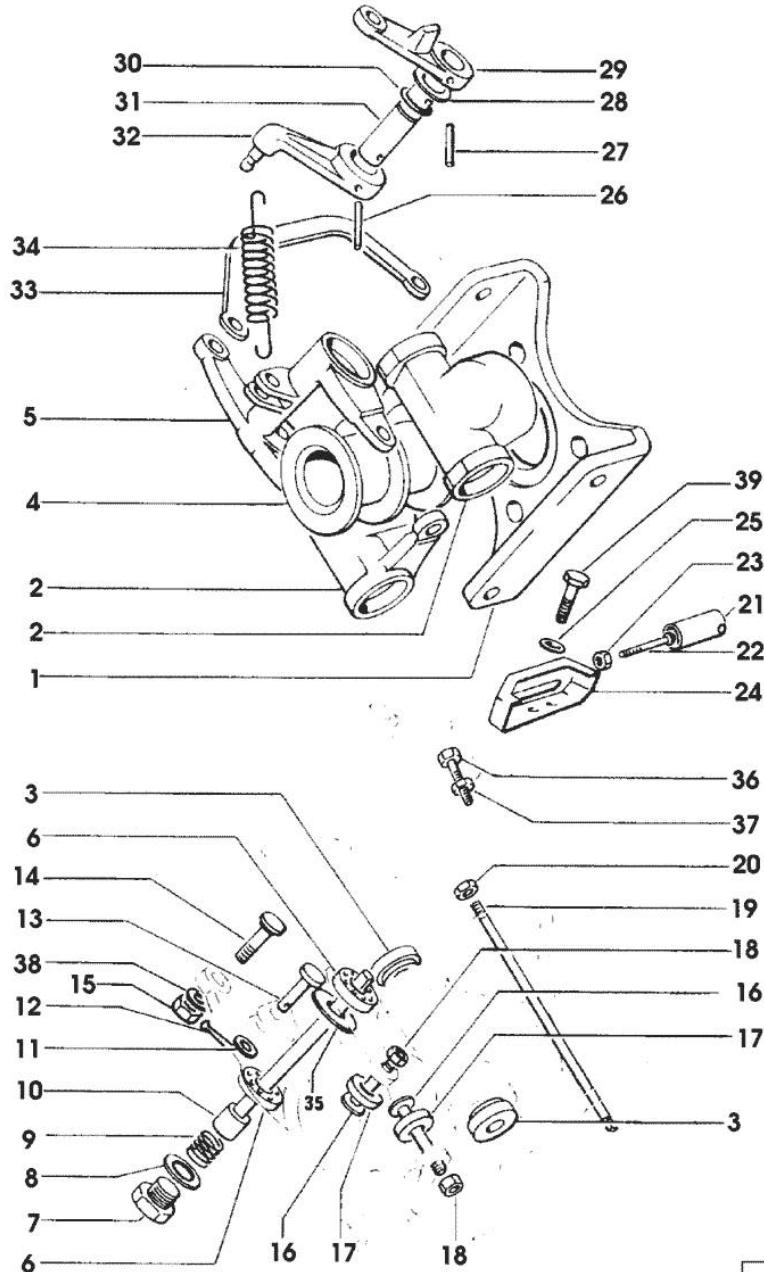


Fig.	P/n	QTY	Name
30	2.1670.311.2	1	pin 8x38x35
31	2.1579.159.2	1	spacer 8.8x12x16
32	2.4099.017.7	1	spring
33	2.1310.004.2	1	flat washer 8.4x17
34	2.1690.206.2	1	split pin A2x15
35	2.1579.455.1	1	spacer 6.2x12x14

258\_017

Section: ENGINE  
**FUEL SUPPLY SYSTEM**



258\_018

Fig.	P/n	QTY	Name
<b>Notes:</b>			
[LASER 150]			
1	0.053.1615.0	1	bracket 20161 <= X 130HP
1	0.062.1615.0	1	bracket => 20162 X 130HP - X 150HP
2	0.052.1616.0	2	adjust.rocker 20161 <= X 130HP
2	0.062.1616.0	2	adjust.rocker => 20162 X 130HP - X 150HP
3	0.053.1654.0	4	roller 20161 <= X 130HP
3	0.062.1653.0	2	roller - X 150HP
4	0.071.1618.0	1	sleeve
5	0.042.1619.0/10	1	lever 20161 <= X 130HP
5	0.062.1619.0	1	lever => 20162 X 130HP - X 150HP
6	2.2999.066.0	2	special bearing 7x19x6 20161 <= X 130HP
6	2.2999.158.0	2	special bearing => 20162 X 130HP - X 150HP
7	2.3110.302.1	1	plug m 12 p.1.75 x 10
8	2.1560.008.0	1	gasket 12.2 x 18
9	2.4019.283.1	1	spring
10	0.041.1620.0	1	pin
11	2.1310.001.2	1	flat washer 5.3 x 10
12	2.1690.104.2	1	split pin 1.6x10
13	2.1670.005.2	1	pin 5x22x20
14	0.074.1655.0	1	pin
15	2.1011.103.2	2	nut m 6 p.1
16	0.054.1654.0/10	4	pin
17	0.062.1653.0	4	roller
18	2.1019.007.1	4	special nut m 6 p.1
19	0.053.1617.0	2	pin 20161 <= X 130HP
19	0.062.1617.0/10	2	pin => 20162 X 130HP



Section: ENGINE

FUEL SUPPLY SYSTEM

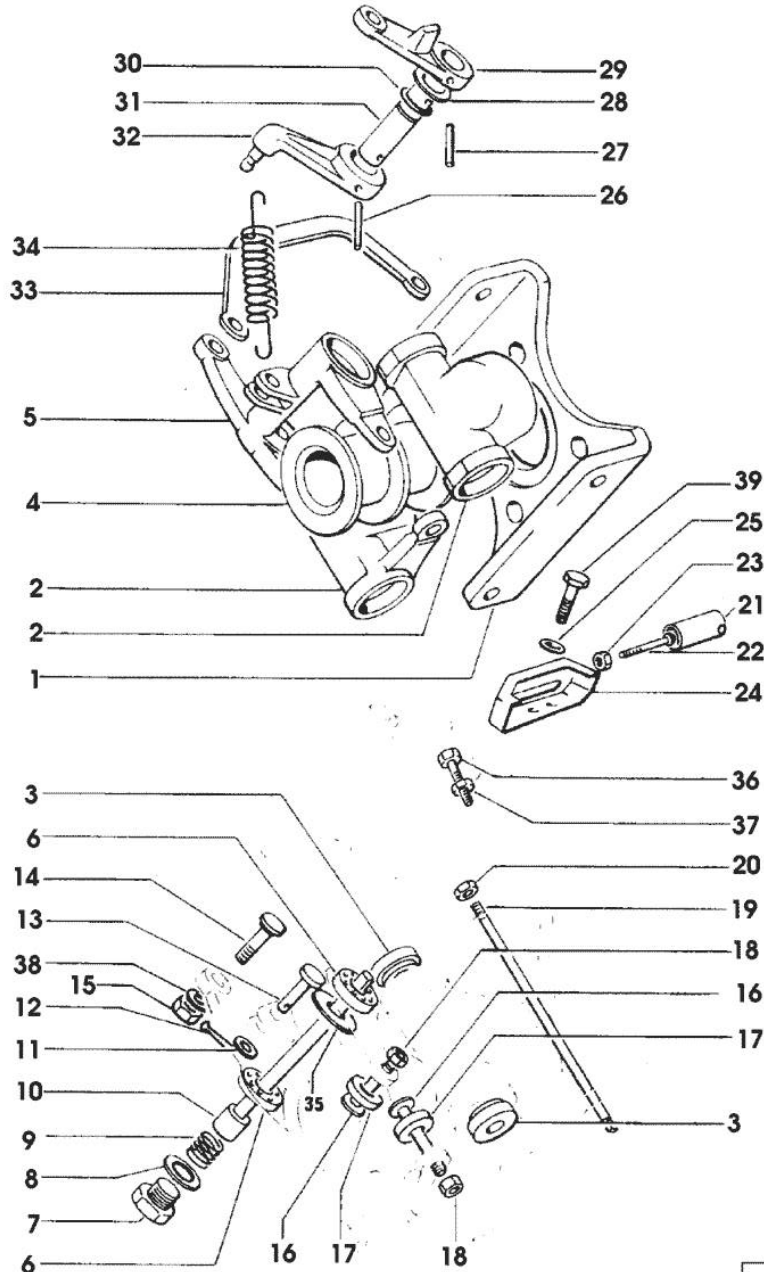


Fig.	P/n	QTY	Name
20	2.1120.004.2	2	self-locking nut m 7 20161 <= X 130HP
20	2.1120.305.2	2	self-locking nut m 8 p.1 x 8 => 20162 X 130HP - X 150HP
21	0.062.1664.0	1	sleeve
22	2.0220.317.2	1	screw m 5x0.8x35
23	2.1011.102.2	1	nut m 5 p.0.7
24	0.052.1661.2/20	1	small cover
25	2.1310.002.3	2	flat washer 6.4 x 12 x 1.6
26	2.1630.410.0	1	roll pin 4 x 20
27	2.1630.511.0	1	roll pin 5x24
28	2.1599.141.0	1	shoulder ring 12.5x19x1.5
29	0.041.1621.0	1	lever
30	2.1530.016.0	1	oil seal 8.73 x 1.78
31	0.041.1655.0/10	1	pin
32	0.042.1621.0	1	lever
33	0.074.1622.0	1	rod
34	2.4049.090.1	1	spring
34	2.4049.095.1/10	1	spring 20161 <= X 130HP => 20162 X 130HP - X 150HP
35	2.1599.248.1	1	shim 7x11x1
36	2.0112.009.2	1	screw m 6 p.1 x 25
37	2.1011.103.2	1	nut m 6 p.1
38	2.1480.012.1	4	washer 6, d128
39	2.0112.005.2	2	screw m 6 p.1 x 16

258\_018

Section: ENGINE  
**FUEL SUPPLY SYSTEM**

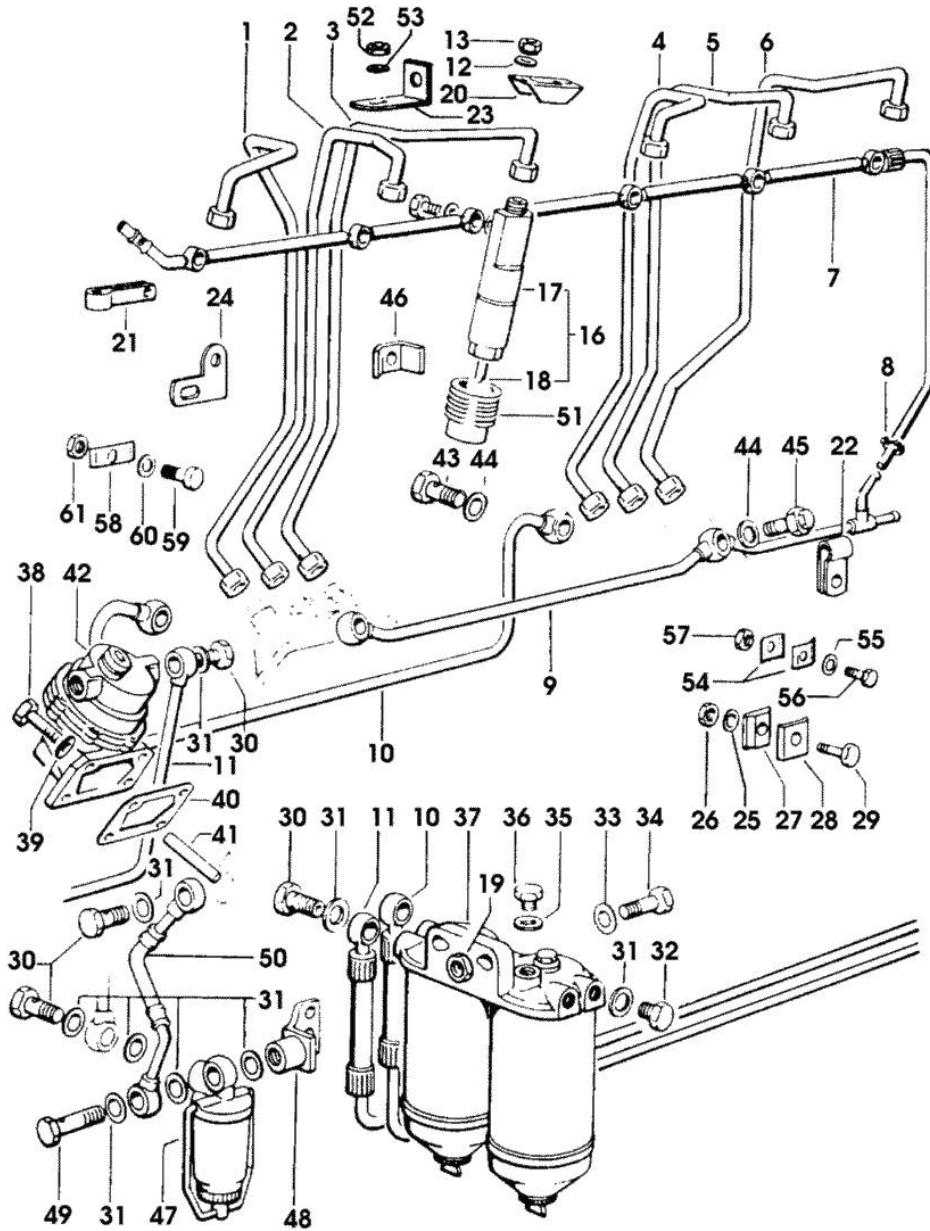


Fig.	P/n	QTY	Name
------	-----	-----	------

Notes:  
 [LASER 150]

1	0.071.1630.3	1	tube
2	0.071.1631.3	1	tube
3	0.071.1632.3	1	tube
4	0.071.1633.3	1	tube
5	0.071.1634.3	1	tube
6	0.071.1635.3	1	tube
7	0.052.1659.4/40	1	tube
7	0.074.1640.3	1	tube 1199 <- > 1200
8	2.6859.029.2	1	clamp
9	0.071.1654.2	1	tube
9	0.074.1642.3	1	tube 1199 <- > 1200
10	0.071.1646.3/10	1	tube
10	0.074.1646.3/10	1	tube 1199 <- > 1200
11	0.071.1645.3/10	1	tube
11	0.074.1645.3/10	1	tube 1199 <- > 1200
12	2.1475.202.7	10	spring washer 8.5
13	2.1099.009.1/10	12	nut
16	2.4719.160.0/10	6	injector assembly
17	2.4719.170.0	6	nozzle holder F 32 ☞ 2.4719.170.0 ☞ 01.00.65
18	2.4729.090.0/10	6	nozzle
19	2.1011.106.2	2	nut m 10 p.1.5
20	0.057.1652.0	6	bracket
21	2.6819.016.2	1	bracket
22	2.6839.034.2	1	bracket
23	0.071.1650.0	4	square
24	0.048.1655.0	3	square
25	2.1470.002.2	9	lock washer 6
26	2.1011.103.2	9	nut m 6 p.1
27	0.002.8816.0	8	small plate
28	0.021.1668.0	8	small block

258\_021

Section: ENGINE  
**FUEL SUPPLY SYSTEM**

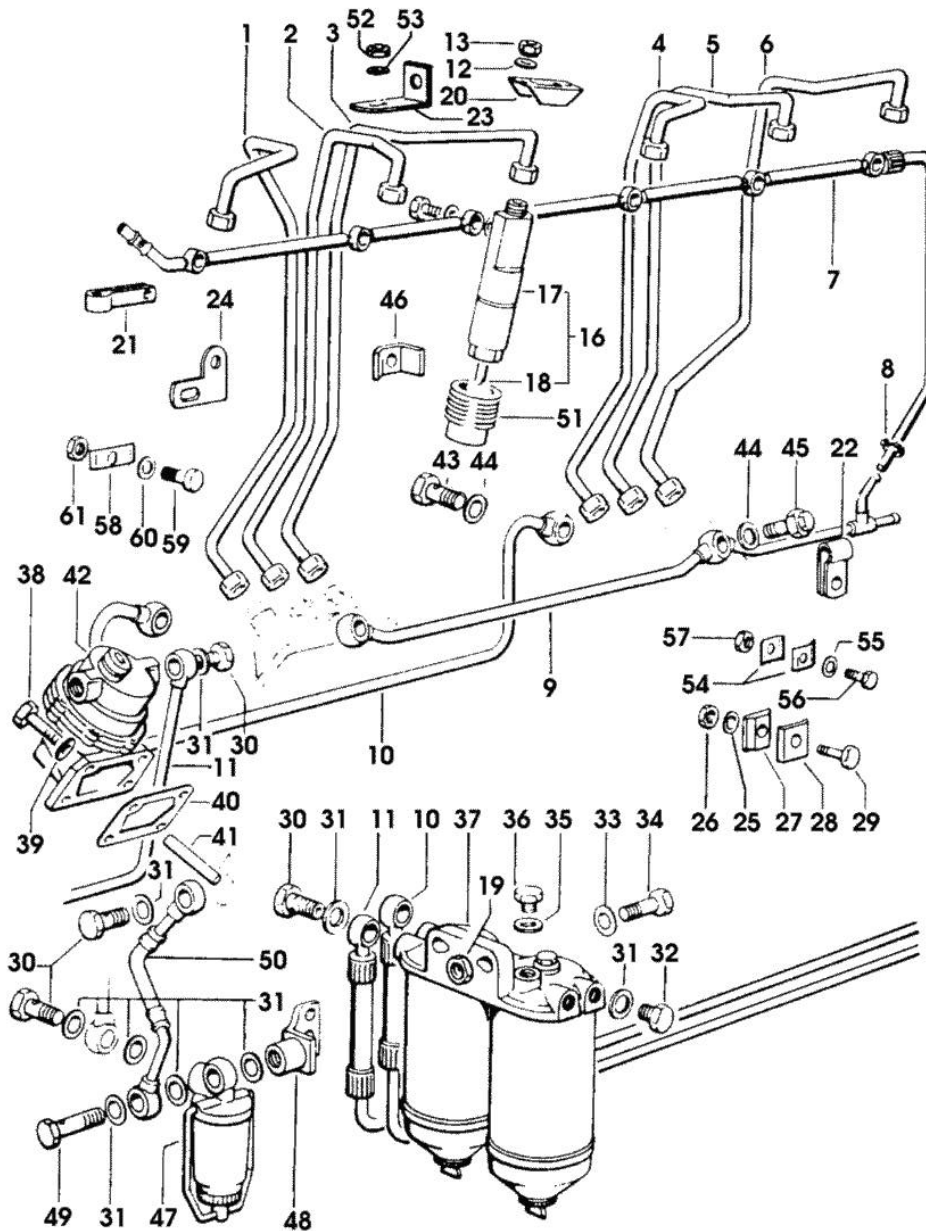


Fig.	P/n	QTY	Name
29	2.0112.007.2	5	screw m 6 p.1 x 20
29	2.0112.009.2	4	screw m 6 p.1 x 25
30	2.3332.004.1	5	pipe union m 14 p.1.5
31	2.1560.010.0	15	gasket 14.2 x 20
32	2.3110.403.1	2	plug m 14 p.1.5x12
33	2.1310.006.2	4	flat washer 10.5x21
34	2.0112.307.2	2	screw m 10 p.1.5 x 20
35	2.1560.005.0	3	copper gasket 10.2 x 14
36	2.3119.005.2	3	plug m 10 p.1.5
37	2.4319.180.0	1	fuel filter F 29 ☞ 2.4319.180.0 ☞ 01.00.58
38	2.0112.207.2	4	screw m 8 p 1.25 x 20
39	2.1480.014.1	4	washer 8
40	0.056.1651.0	1	gasket
41	0.044.1655.0/20	1	ferrule
42	2.4519.230.0/10	1	feed pump F 30 ☞ 2.4519.230.0/10 ☞ 01.00.61
43	2.3339.118.1	2	pipe union m 12 p.1.5
44	2.1560.008.0	4	gasket 12.2 x 18
45	0.045.1651.4	2	valve
46	0.044.1658.0	2	small plate
47	2.4319.220.0	1	precleaner F 33 ☞ 2.4319.220.0 ☞ 01.00.66
48	0.071.1655.2	1	support
49	2.3339.040.2	1	pipe union m 14 p.1.5x45
50	0.071.1651.3	1	tube 1199 <-
50	0.074.1650.2	1	tube -> 1200
51	0.071.1647.0	6	cooling jacket
52	2.1011.505.2	4	nut m 8 p.1
53	2.1470.004.2	4	lock washer 8
54	0.200.8152.0	4	small plate
55	2.1310.002.3	4	flat washer 6.4 x 12 x 1.6
56	2.0112.009.2	2	screw m 6 p.1 x 25
57	2.1011.103.2	2	nut m 6 p.1
58	0.154.6377.0	1	terminal
59	2.0112.005.2	1	screw m 6 p.1 x 16

258\_021

**FUEL SUPPLY SYSTEM**

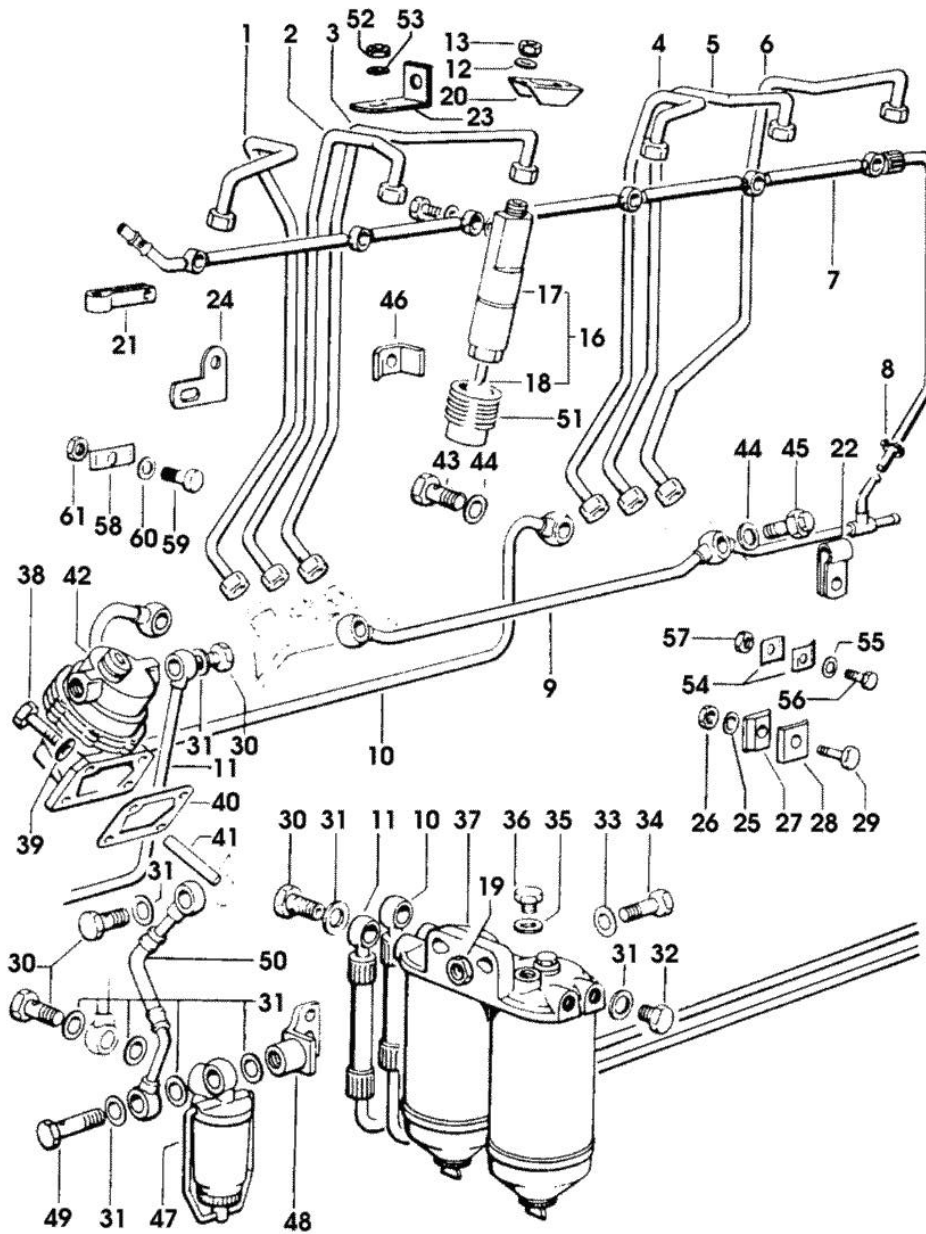


Fig.	P/n	QTY	Name
60	2.1470.006.2	1	lock washer 10
61	2.1011.103.2	1	nut m 6 p.1

258\_021

Thank you so much for reading.  
Please click the “Buy Now!”  
button below to download the  
complete manual.



After you pay.

You can download the most  
perfect and complete manual in  
the world immediately.

Our support email:

[ebooklibonline@outlook.com](mailto:ebooklibonline@outlook.com)