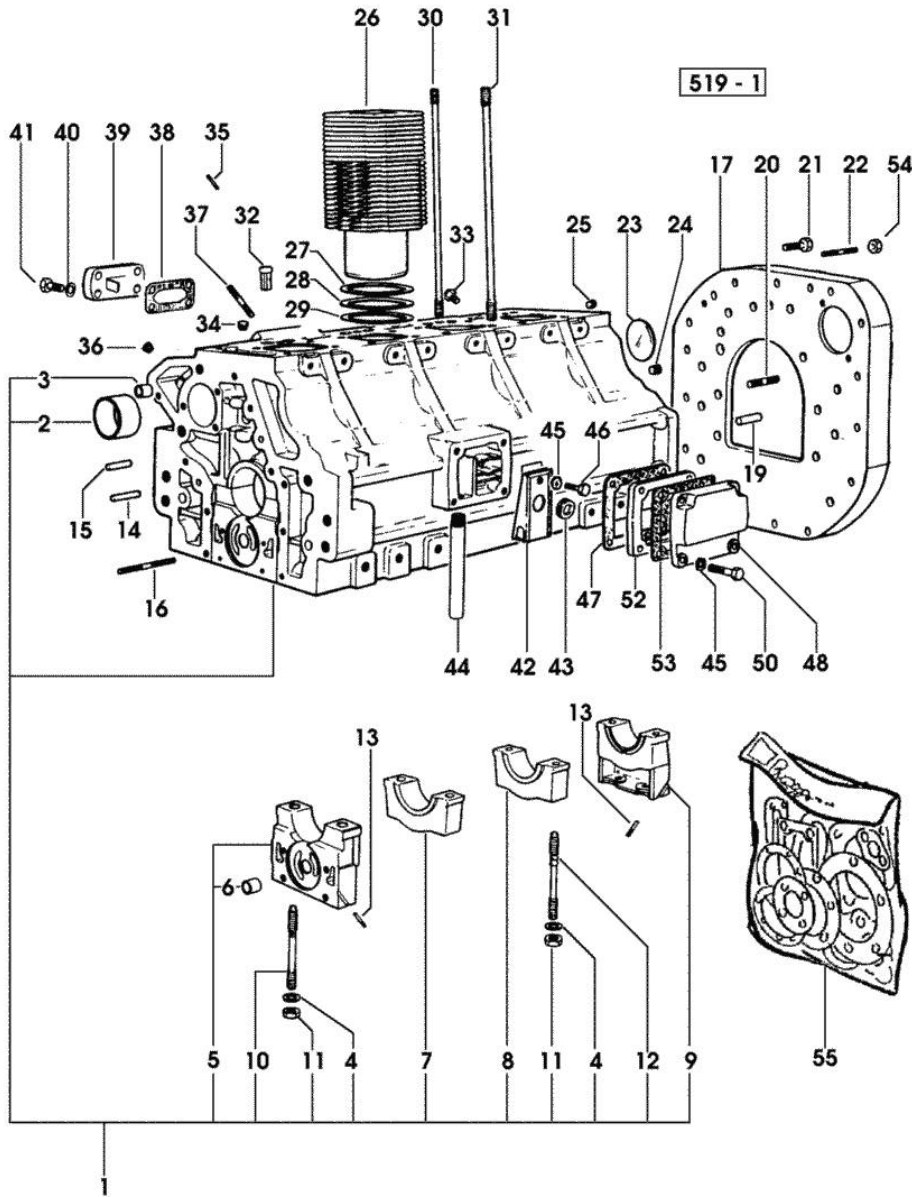


Section: ENGINE
CRANKCASE

Fig.	P/n	QTY	Name
------	-----	-----	------

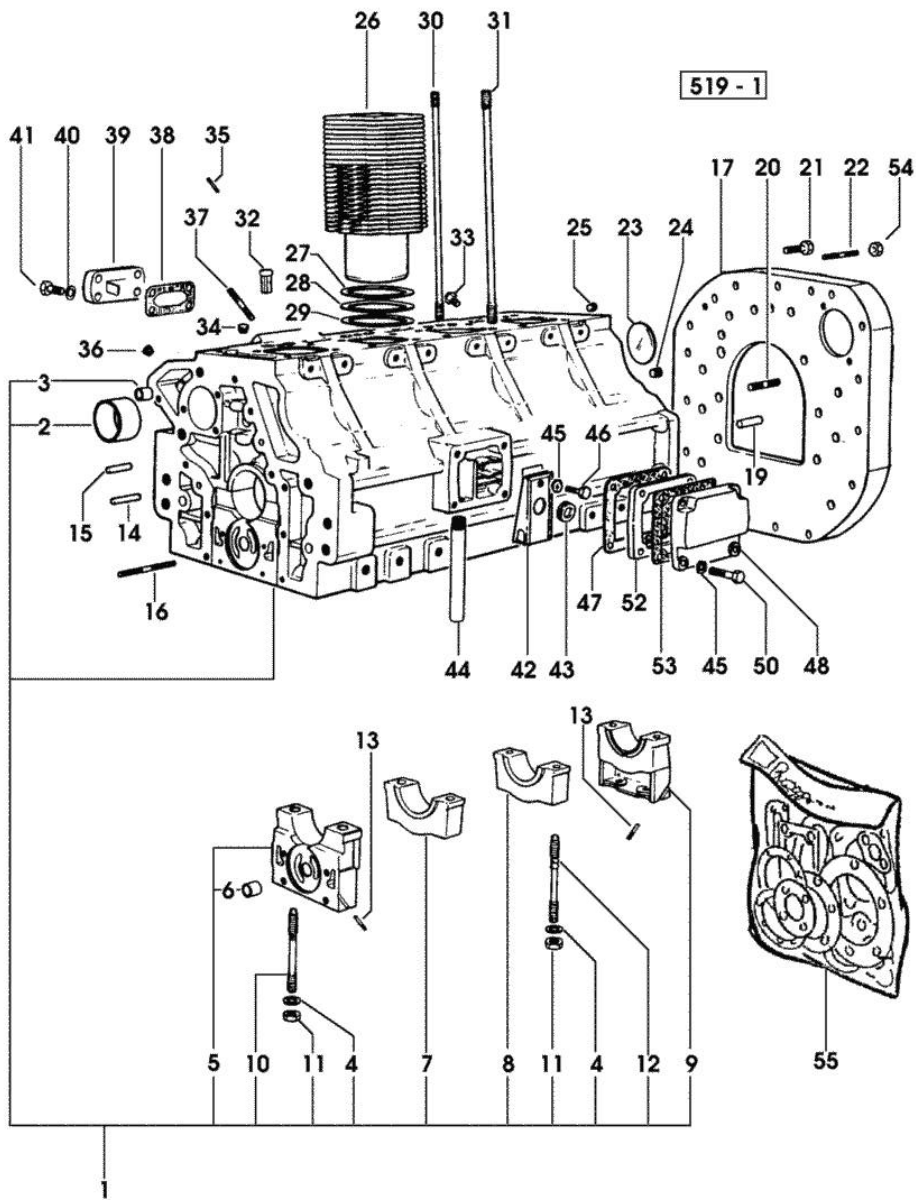
Notes:
 [LASER 85 TRANSPORTER]

1	0.045.1110.4/30	1	crankcase
2	0.037.1155.0	1	bushing
3	2.1559.111.0/10	2	special bushing 11.5x14.1x10
4	2.1599.144.7	10	shoulder ring 12.5x23x4
5	0.036.1112.3	1	support
6	2.1559.090.0/10	1	bushing 14.24x19.06x27
7	0.037.1114.0	1	support
8	0.029.1113.0	2	support
9	0.029.1116.0	1	support
10	0.021.1157.0	4	stud bolt
11	2.1019.026.7	10	special nut m 12 p.1.5
12	0.029.1117.0	6	stud bolt
13	0.029.1154.0/10	4	gasket
14	2.1699.114.0	1	pin 8x55
15	2.1651.711.0	1	pin 8 x 14
16	2.0432.025.7	2	stud bolt m 8 p.1.25 - 1.00 x 100
17	0.071.1150.0	1	flange
19	2.1653.911.0	2	cylindrical plug 12x25
20	2.0432.153.7	2	stud bolt m 10 p.1.5 / p.1.25 x 20
21	2.0112.513.2	11	screw m 14 p.2 x 35
22	2.0432.257.7	2	stud bolt m 12 p.1.75 - 1.25 x 30
23	2.3170.022.1	1	expansion plug 60
24	2.3130.003.1	2	plug 3/8" gas
25	2.3130.002.1	1	plug 1/4" gas
26	0.044.1120.0/40	4	engine cylinder
27	2.1589.052.0	8	shoulder ring 115x123x0.2
28	2.1589.051.0	4	shoulder ring 116x123x0.1
29	2.1569.076.0	12	gasket 116x123x0.5
30	0.041.1123.0/10	4	stud bolt
31	0.039.1122.0	16	stud bolt m 12 p.1.5x310
32	0.044.1156.0	8	special bushing
33	0.071.1151.3/10	4	valve
34	2.3130.001.1	4	plug 1/8" gas
35	2.1652.507.0	2	pin 6x16
36	2.3139.001.1	5	plug
37	2.0432.003.7	4	stud bolt m 8 p.1.25 / p.1 x 20
38	0.044.1151.0	1	gasket
39	0.044.1164.2/10	1	small cover
40	2.1310.004.2	4	flat washer 8.4x17
41	2.0112.205.2	4	screw m 8 p.1.25 x 16
42	0.071.1155.2	1	small guard



Section: ENGINE
CRANKCASE

Fig.	P/n	QTY	Name
43	0.071.1156.0	1	special oil seal
44	0.044.1152.0/10	1	tube
45	2.1474.009.2	5	spring washer 8
46	2.0312.206.2	1	screw m 8 p 1.25 x 20
47	0.044.1153.0/10	1	gasket
48	0.071.1154.0	1	small cover
50	2.0112.211.2	4	screw m 8 p.1.25 x 30
52	0.071.1153.0	1	small cover
53	0.044.1153.0/10	1	gasket
54	2.1011.107.2	2	nut m 12 p.1.75
55	0.044.0050.6	1	gasket set - FOR ENGINE MOUNTING



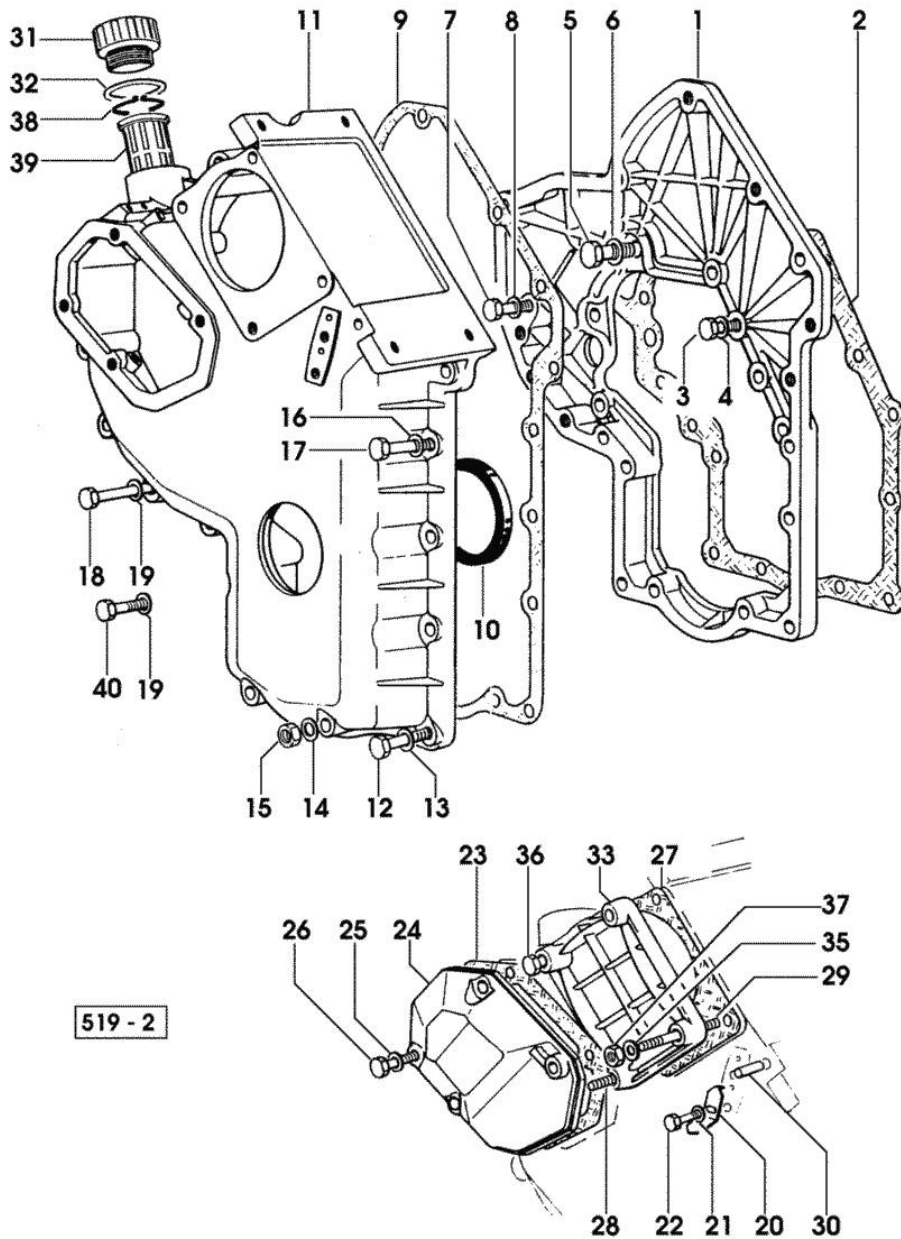
Section: ENGINE

TIMING CASE

Fig.	P/n	QTY	Name
------	-----	-----	------

Notes:
[LASER 85 TRANSPORTER]

1	0.048.1131.0	1	flange
2	0.041.1153.0/10	1	gasket
3	2.0112.209.2	2	screw m 8 p 1.25 x 25
4	2.1470.009.2	2	lock washer 16
5	2.0119.034.1	1	screw m 14 p.2x20
6	2.1560.010.0	1	gasket 14.2 x 20
7	2.0112.207.2	1	screw m 8 p 1.25 x 20
8	2.1470.009.2	1	lock washer 16
9	0.041.1152.0/10	1	gasket
10	2.1519.010.0	1	special oil seal 58x80x10
11	0.048.1132.0/40	1	guard
12	2.0112.219.2	5	screw m 8 p.1.25x55
13	2.1470.009.2	5	lock washer 16
14	2.1560.003.0	2	copper gasket 8.2 x 12
15	2.1011.405.2	2	nut m 8 p.1
16	2.1470.009.2	5	lock washer 16
17	2.0112.211.2	5	screw m 8 p.1.25 x 30
18	2.0112.223.2	4	screw m 8 p.1.25x70
19	2.1470.009.2	4	lock washer 16
20	0.041.1158.0	1	index
21	2.1310.004.2	1	flat washer 8.4x17
22	2.0112.205.2	1	screw m 8 p.1.25 x 16
23	0.048.1151.0/10	1	gasket
24	0.048.1150.0/20	1	cover
25	2.1560.006.0	4	gasket 10.2 x 16
26	2.0112.315.2	4	screw m 10 p.1.5 x 40
27	0.041.1154.0	1	gasket
28	2.0432.015.7	1	stud bolt m 8 p.1.25-1x50
29	2.0432.028.7	3	stud bolt m 8 p.1.25-1x130
30	2.1653.717.0	1	pin 8 x 40
31	0.041.1135.4	1	plug 1" gas
32	2.1569.072.0	1	gasket 32 x 39.5 x 2
33	0.037.1151.0/10	1	cover
35	2.1310.004.2	4	flat washer 8.4x17
36	2.0112.235.2	1	screw m 8 p.1.25 x 130
37	2.1011.505.2	3	nut m 8 p.1
38	2.1411.012.1	1	circlip 30
39	0.041.1159.0/10	1	filter
40	2.0112.209.2	2	screw m 8 p 1.25 x 25



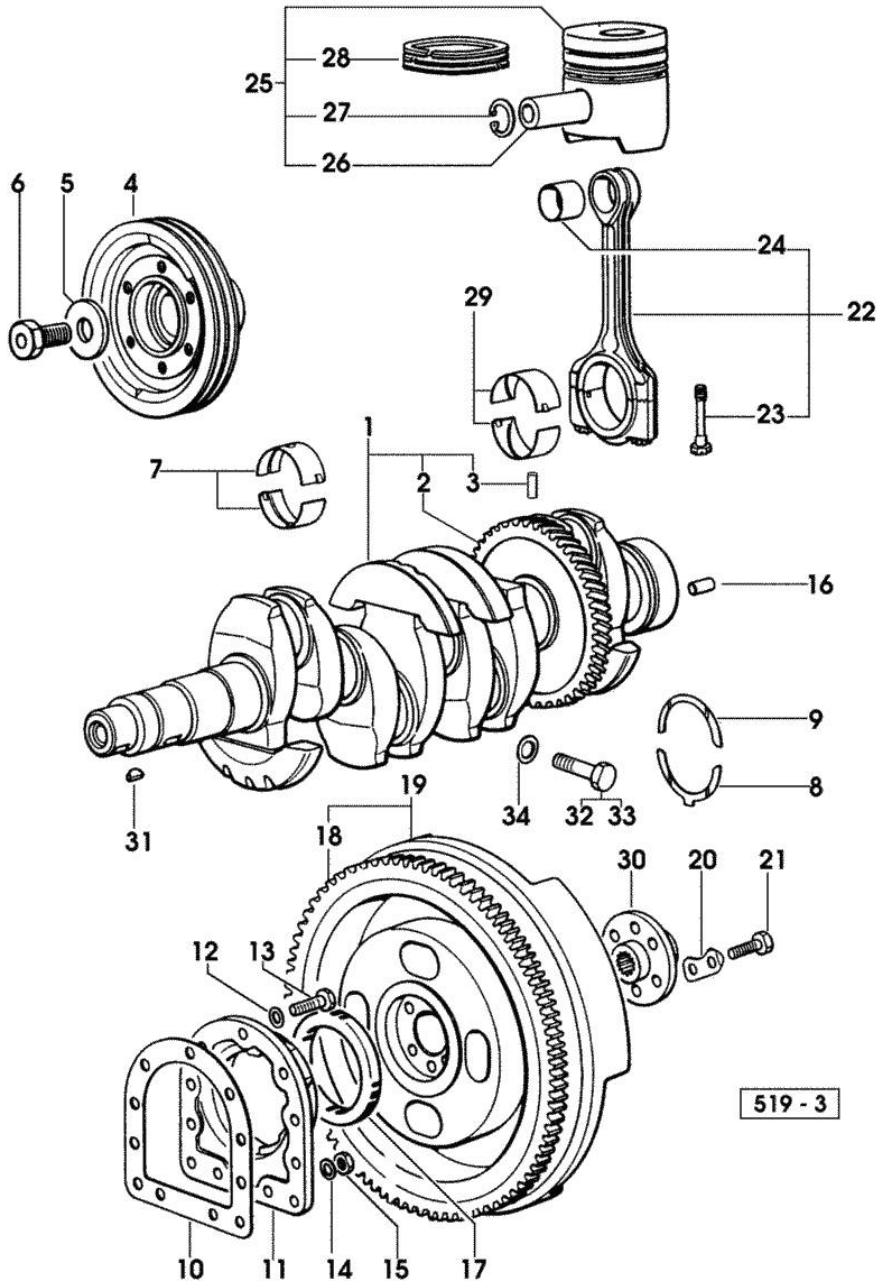
Section: ENGINE

CRANKSHAFT

Fig.	P/n	QTY	Name
------	-----	-----	------

Notes:
[LASER 85 TRANSPORTER]

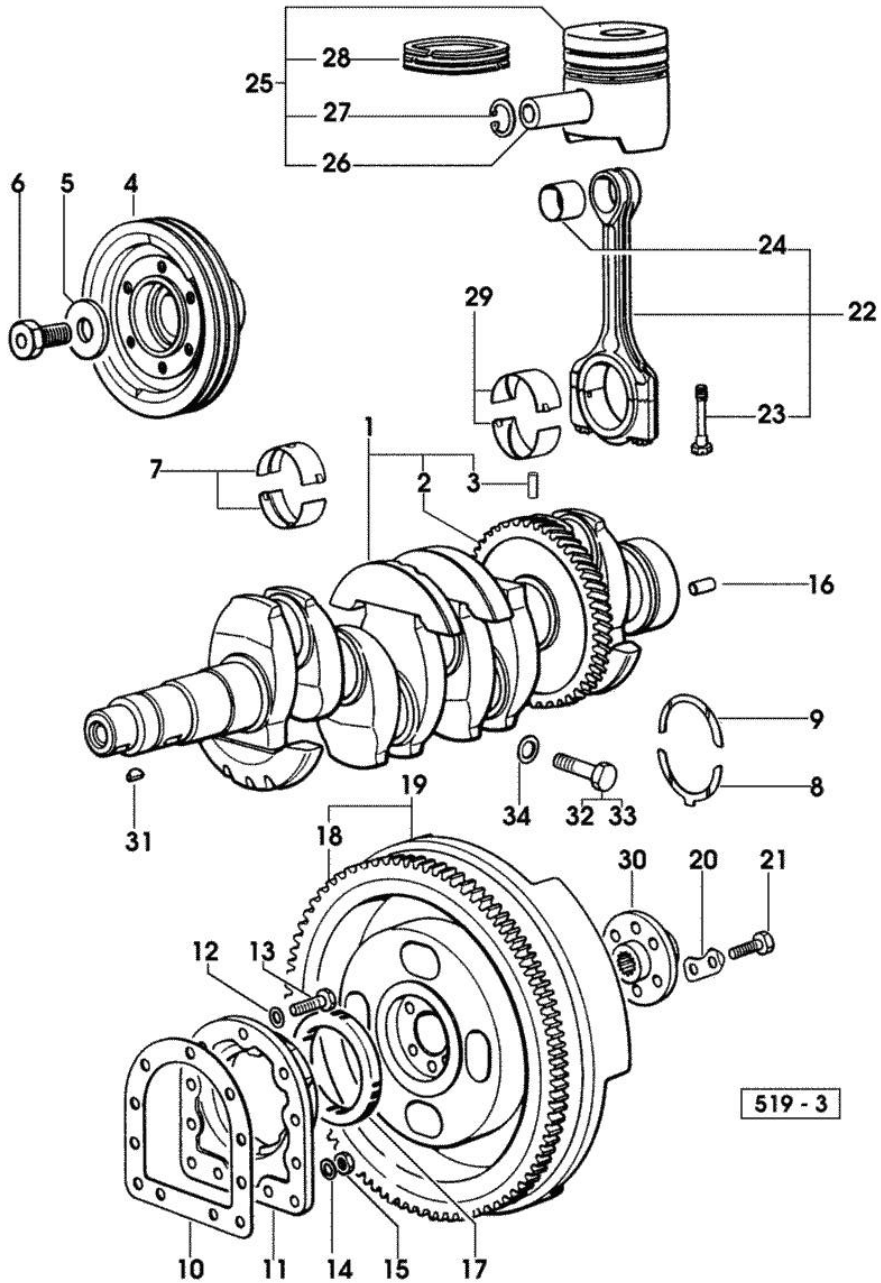
1	0.044.1267.3/30	1	crankshaft
2	0.044.1265.0/20	1	gear
3	2.1630.611.0	1	roll pin 6 x 24
4	0.062.1250.0	1	pulley
5	0.001.6020.0	1	shoulder
6	2.0129.032.2	1	screw m 24 p.2x45
7	0.073.0059.0		main half bushing - mm 1.00
7	0.073.1215.0	10	main half bushing STANDARD
7	0.073.1215.7		main half bushing - mm 0.25
7	0.073.1215.8		main half bushing - mm 0.50
7	0.073.1215.9		main half bushing - mm 0.75
8	0.001.4547.0		shoulder ring + mm 0.05
8	0.001.4548.0		shoulder ring + mm 0.10
8	0.001.4549.0		shoulder ring + mm 0.15
8	0.042.1219.0	2	shoulder ring STANDARD
9	0.001.4544.0		shoulder ring + mm 0.05
9	0.001.4545.0		shoulder ring + mm 0.10
9	0.001.4546.0		shoulder ring + mm 0.15
9	0.042.1218.0	2	shoulder ring STANDARD
10	0.029.1250.0/10	1	gasket
11	0.045.1240.0	1	flange
12	2.1474.010.2	9	washer 10
13	2.0112.309.2	9	screw m 10 p.1.5 x 25
14	2.1560.006.0	2	gasket 10.2 x 16
15	2.1011.421.2	2	nut m 10 p.1.25
16	2.1652.915.0	2	cylindrical plug 12x35
17	2.1519.009.0/10	1	special oil seal
18	0.046.1256.3	1	flywheel
19	0.047.1242.0	1	crown wheel z=128
20	2.1379.006.0	3	lock-tab 15x15x36,5
21	2.0122.517.7	6	screw m 14 p.1.5x45
22	0.039.1220.3/30	4	engine connecting rod
23	0.039.1250.0	8	screw m 14 p.1.5x63
24	2.1559.114.0/10	4	special bushing
25	0.073.0060.6	4	complete piston STANDARD
25	0.073.0061.6		complete piston + mm 0.50
25	0.073.0062.6		complete piston + mm 1.0
26	0.038.1236.0/10	4	piston pin Ø 18 / Ø 35 / L = mm 90
27	2.1411.014.1	8	circlip 35
28	0.042.0052.6	4	piston ring set STANDARD
28	0.042.0053.6		piston ring set + mm 0.50



Section: ENGINE

CRANKSHAFT

Fig.	P/n	QTY	Name
28	0.042.0054.6		piston ring set + mm 1.0
29	0.039.0068.0		con.rod half bushing - mm 1.016
29	0.062.1225.0	8	con.rod half bushing STANDARD
29	0.062.1225.7		con.rod half bushing - mm 0.25
29	0.062.1225.8		con.rod half bushing - mm 0.50
29	0.062.1225.9		con.rod half bushing - mm 0.75
30	0.170.3650.0	1	flange
31	2.1799.026.0	1	key 10x10
32	2.0313.312.1	9	screw m 10 p.1.5 x 35
33	2.0313.316.1	3	screw m 10 p.1.5 x 50
34	2.1480.015.1	12	washer 10



Section: ENGINE
COUNTERWEIGHTS

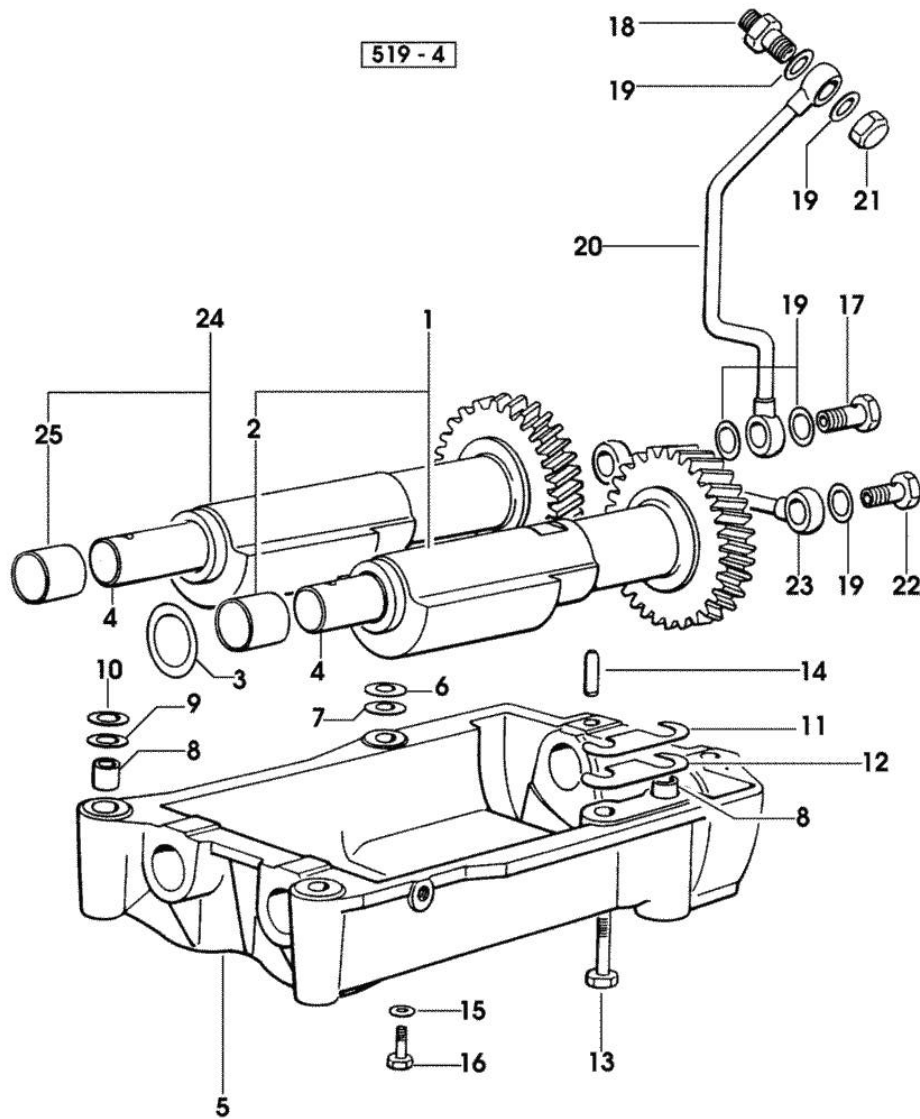


Fig.	P/n	QTY	Name
------	-----	-----	------

Notes:
 [LASER 85 TRANSPORTER]

1	0.044.1263.3/20	1	mass sx/lh/li
2	2.1559.115.0	2	special bushing 26x30x30
3	2.1589.050.0/10	4	shoulder ring 26.1x38x1
4	0.044.1266.0/20	2	shaft
5	0.044.1260.0/30	1	support
6	2.1589.049.0	1	shoulder ring 12.5x26x0.3
7	2.1579.629.0	4	spacer 12.5x26x0.1
8	2.1579.626.0	2	spacer 13.2x16x11
9	2.1579.628.0	1	spacer 16.5x26x0.1
10	2.1589.048.0	1	shoulder ring 16.5x26x0.3
11	2.1379.038.0	2	shim mm 0.1
12	2.1379.039.0	1	shim mm 0.3
13	2.0112.426.2	4	screw m 12 p.1.75x85
14	2.1631.717.0	2	roll pin 8 x 40
15	2.1310.004.2	1	flat washer 8.4x17
16	2.0112.205.2	1	screw m 8 p.1.25 x 16
17	2.3339.515.1/10	1	pipe union m 12 p.1.25x39
18	2.3319.041.1	1	pipe union m 12 p.1.25-p.1.75
19	2.1560.008.0	7	gasket 12.2 x 18
20	0.044.1562.2	1	tube
21	2.1019.048.1	1	special nut m 12 p.1.5
22	2.3332.003.1	1	pipe union m 12 p.1.25
23	0.319.1550.3	1	tube
24	0.044.1261.3/10	1	mass dx/rh/re
25	2.1559.115.0	2	special bushing 26x30x30

Section: ENGINE

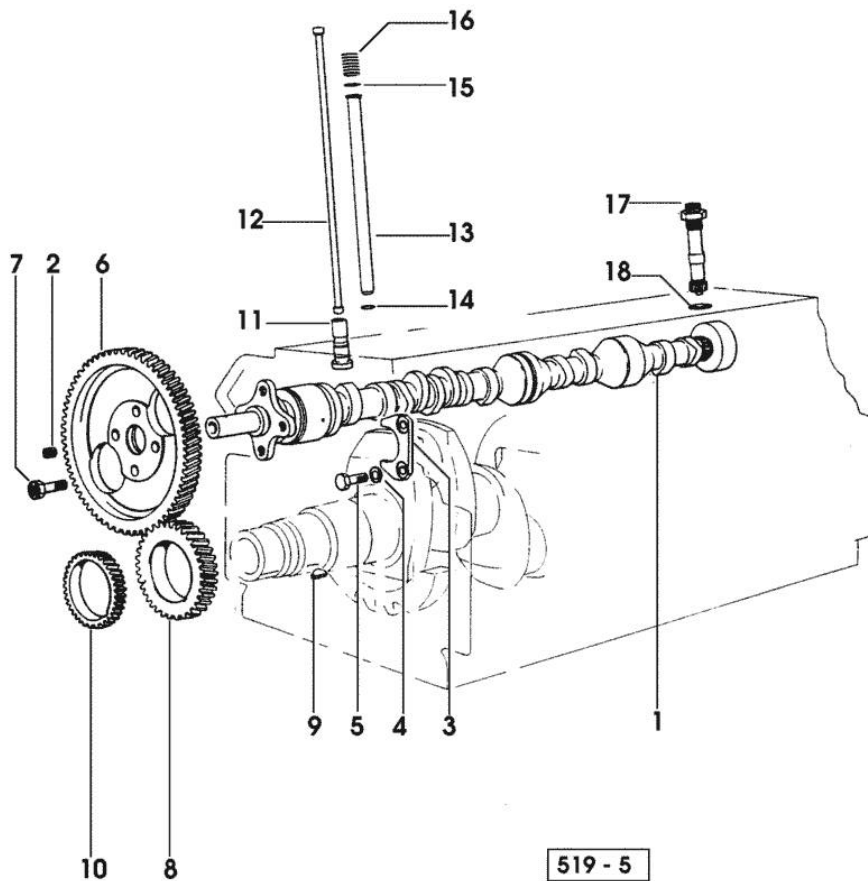
CAMSHAFT

Fig.	P/n	QTY	Name
------	-----	-----	------

Notes:

[LASER 85 TRANSPORTER]

1	0.044.1310.0/40	1	camshaft
2	2.3130.001.1	1	plug 1/8" gas
3	0.027.1314.0/10	1	plate
4	2.1470.004.2	2	lock washer 8
5	2.0112.207.2	2	screw m 8 p 1.25 x 20
6	0.062.1321.0	1	gear z=66
7	2.0139.005.1	4	screw m 10 p.1 x 25
8	0.040.1320.0	1	gear z = 33
9	2.1720.010.0	1	key 5x9
10	0.040.1323.0/10	1	gear Z = 38
11	0.052.1330.0/20	8	tappets
12	0.041.1331.3	8	rod
13	0.041.1332.0	8	sleeve
14	2.1539.020.0	8	special oil seal 13.95x2.62
15	2.1539.022.0	8	special oil seal 12.37x2.62
16	2.4019.162.1/20	8	spring 17.2x46x1.8
17	0.041.1355.3	1	transmission
18	2.1560.014.0	1	washer 18.2 x 24

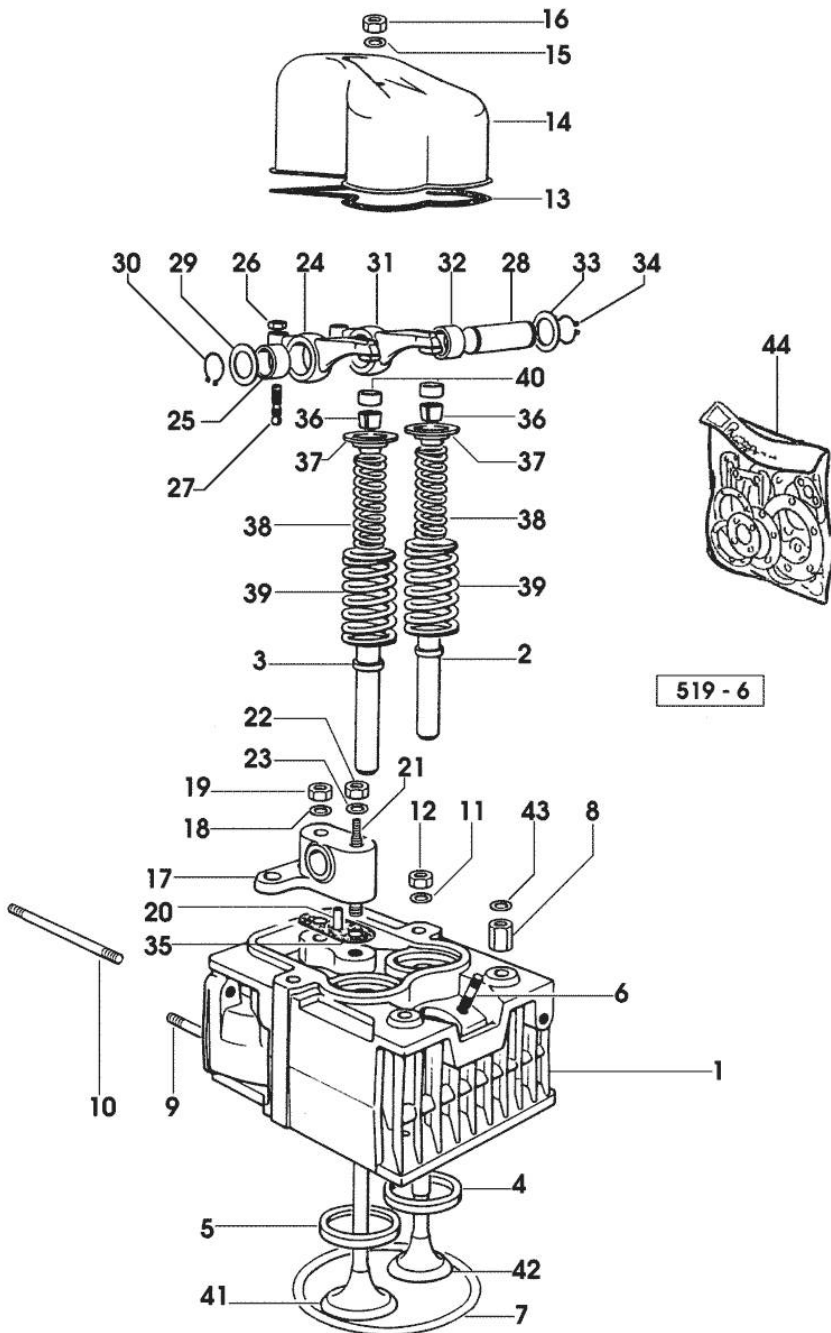


Section: ENGINE
CYLINDER HEAD

Fig.	P/n	QTY	Name
------	-----	-----	------

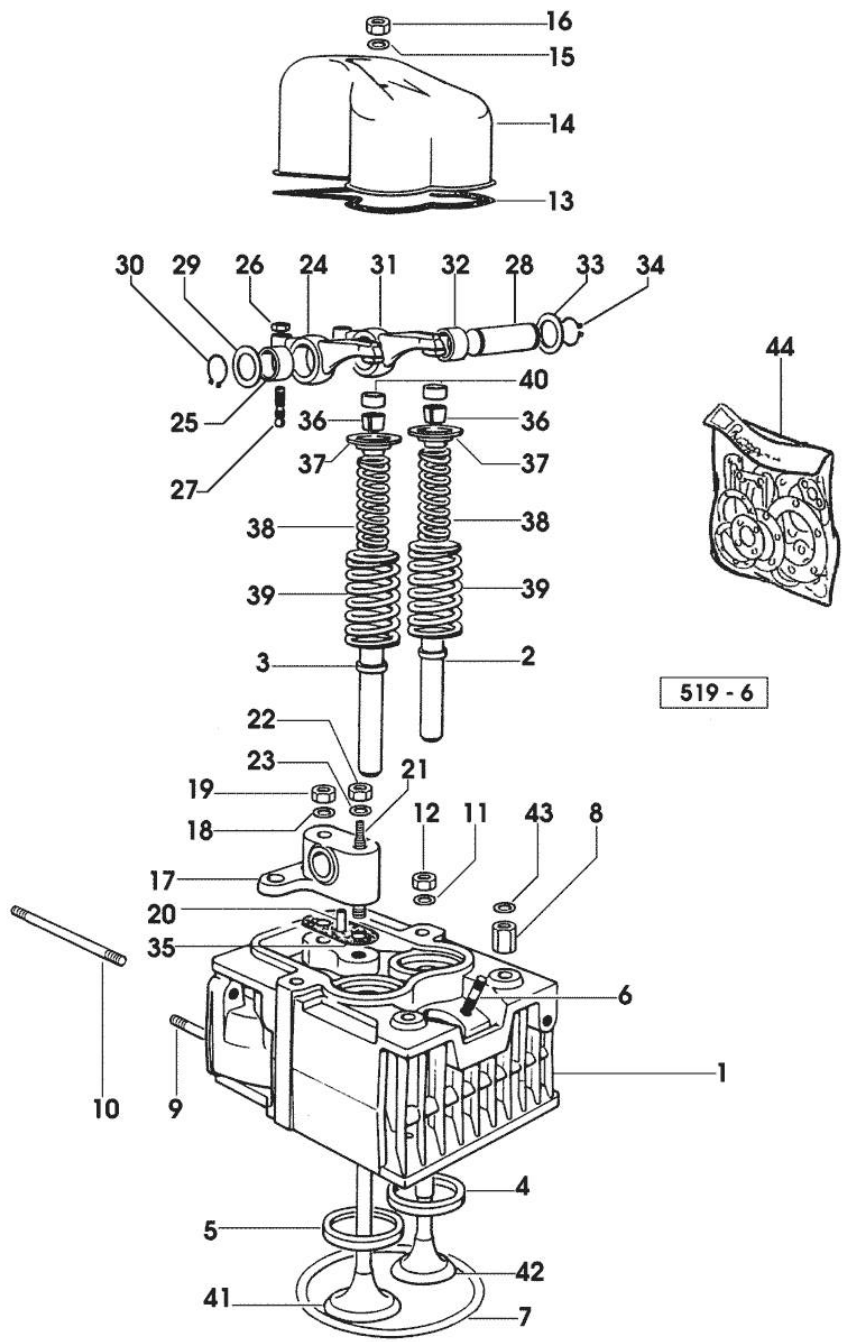
Notes:
[LASER 85 TRANSPORTER]

1	0.062.1410.3/10	4	engine head
2	0.062.1417.0/10	4	valve guide
3	0.062.1416.0/10	4	valve guide
4	0.062.1450.0/10	4	valve seat
5	0.062.1451.0/10	4	valve seat
6	2.0439.087.1/20	8	stud bolt m 8 p.1.25 / p.1 x 40
7	2.1569.078.0/10	4	gasket 106x118x0.5
8	2.1019.037.0	7	special nut m 12 p.1.5
9	2.0432.007.2	7	stud bolt m 8 p.1.25 / p.1 x 30
10	2.0432.026.7	4	stud bolt m 8 p.1.25 - 1.00 x 110
11	2.1599.144.7	16	shoulder ring 12.5x23x4
12	2.1019.025.0	10	special nut m 12 p.1.5
13	0.029.1450.0/20	4	tappet gasket
14	0.039.1440.0	4	cap
15	2.1560.004.0	4	copper gasket 8.2 x 14
16	2.1099.056.2	4	special nut m 8 p.1 x 8
17	0.041.1430.0	4	support
18	2.1599.160.0	4	washer 10.5x19x4
19	2.1099.035.0	4	special nut m 10 p.1.25
20	0.029.1452.0	4	tube
21	0.039.1451.0	4	stud bolt
22	2.1011.421.2	4	nut m 10 p.1.25
23	2.1310.006.2	4	flat washer 10.5x21
24	0.002.4003.0	4	rocker arm
25	2.1559.021.0/40	4	bushing 15x19x22
26	2.1011.405.2	8	nut m 8 p.1
27	0.021.1434.0	8	screw
28	0.041.1431.0	4	pin
29	2.1599.019.0	4	shoulder ring 19.5x31x2
30	2.1410.055.1	4	circlip 19
31	0.002.4004.0/20	4	rocker arm
32	2.1559.021.0/40	4	bushing 15x19x22
33	2.1559.019.0	4	special bushing
34	2.1410.055.1	4	circlip 19
35	0.034.1450.0	4	tappet gasket
36	0.062.1423.0/10	16	conical valve cotter
37	0.062.1425.0	8	cup
38	2.4019.194.0	8	spring 22.70x50.7x2.1
39	2.4019.193.0	8	spring 36.15x55.2x3.2
40	0.062.1452.0	8	small cover
41	0.042.1420.2	4	inlet valve Ø mm 8



Section: ENGINE
CYLINDER HEAD

Fig.	P/n	QTY	Name
42	0.071.1420.2	4	exhaust valve Ø mm 8
43	2.1310.007.2	2	flat washer 13 x 24
44	0.073.0057.6	1	gasket set - FOR 1 CYLINDER VALVE GRINDING AND PISTON RINGS REPLACEMEN

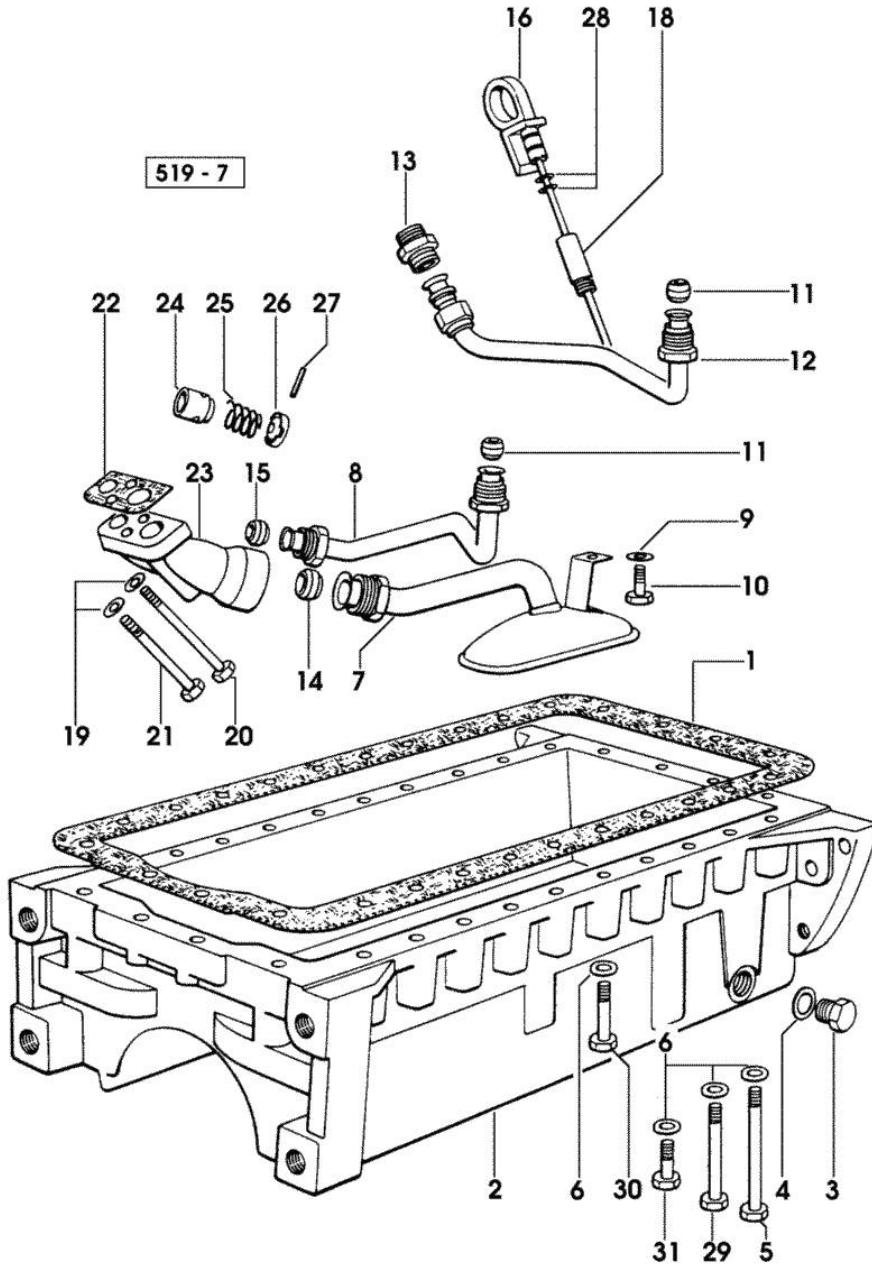


Section: ENGINE
LUBRICATION

Fig.	P/n	QTY	Name
------	-----	-----	------

Notes:
[LASER 85 TRANSPORTER]

1	0.036.1512.0	1	gasket
2	0.045.1559.0	1	oil sump
3	2.3199.001.2	1	plug 1/2" gas
4	2.1560.056.0	1	gasket 33x39
5	2.0112.237.2	4	screw m 8 p.1.25x140
6	2.1560.004.0	4	copper gasket 8.2 x 14
7	0.044.1556.3/10	1	tube
8	0.044.1560.2	1	tube
9	2.1310.004.2	1	flat washer 8.4x17
10	2.0112.205.2	1	screw m 8 p.1.25 x 16
11	2.3359.015.1	2	nosepiece
12	0.044.1561.2/10	1	tube
13	0.045.1557.0	1	pipe fitting
14	2.3359.014.1	1	nosepiece
15	2.3359.016.1	1	nosepiece
16	0.063.1513.2	1	dipstick
18	0.044.1555.0	1	spacer
19	2.1474.009.2	2	spring washer 8
20	2.0112.231.2	1	screw m 8 p.1.25 x 110
21	2.0112.225.2	1	screw m 8 p.1.25 x 80
22	0.037.1557.0/20	1	gasket
23	0.052.1530.0	1	tip
24	0.052.1571.0	1	small piston
25	2.4019.270.1	1	spring 9.7x54x2
26	0.054.1558.0/20	1	stop
27	2.1630.213.0	1	roll pin 3x32
28	2.1539.065.0	2	special oil seal 8.73 x 1.78
29	2.0112.231.2	2	screw m 8 p.1.25 x 110
30	2.0112.225.2	20	screw m 8 p.1.25 x 80
31	2.0112.219.2	2	screw m 8 p.1.25x55



Section: ENGINE
LUBRICATION

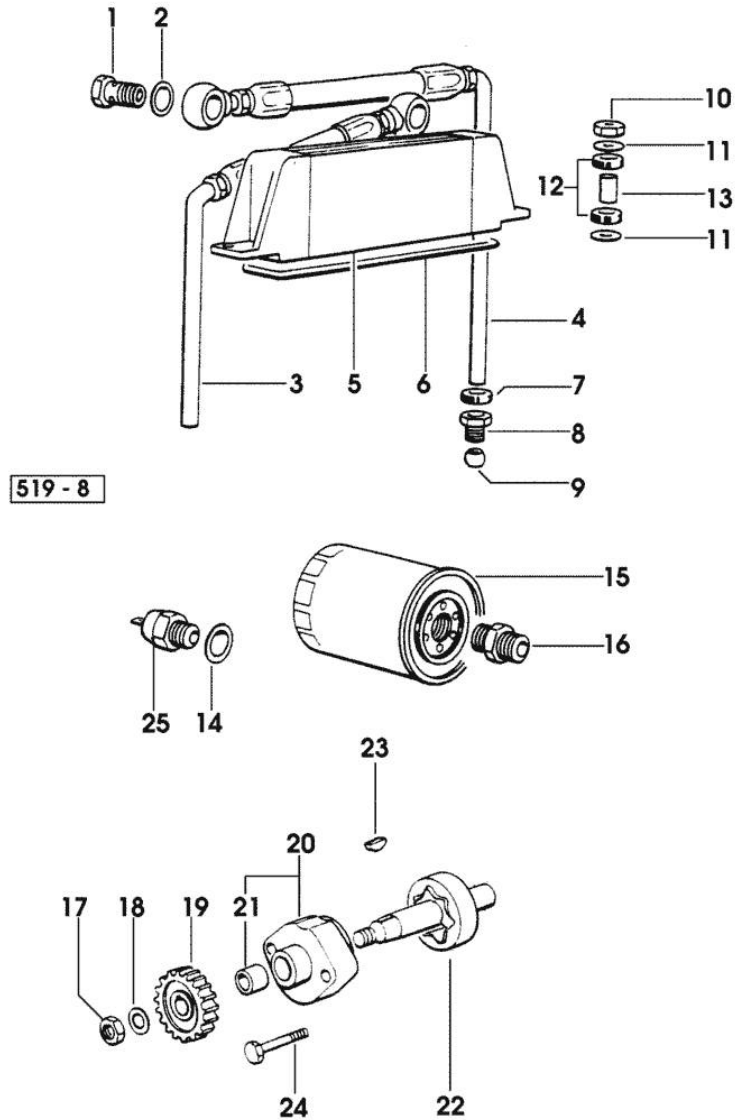


Fig.	P/n	QTY	Name
Notes:			
[LASER 85 TRANSPORTER]			
1	2.3339.107.1	2	pipe union m 22
2	2.1560.018.0	4	gasket 22.2 x 29
3	0.044.1553.2/40	1	tube
4	0.044.1552.2/50	1	tube
5	0.045.1540.3	1	oil cooler
6	0.044.1541.0/10	1	gasket
7	2.6560.013.0	2	wire guide 18x1.5
8	2.3339.167.2	2	pipe fitting
9	2.3359.012.0	2	nosepiece 10x16.8
10	2.1011.105.2	2	nut m 8 p.1.25
11	2.1312.004.2	4	washer 8x24x2
12	0.021.1560.0	4	rubber plug
13	2.1579.159.2	2	spacer 8.8x12x16
14	2.1560.008.0	1	gasket 12.2 x 18
15	0.044.1567.0	1	oil filter element
16	2.3339.094.1/10	1	pipe fitting m 20 p.1.5-3/4 gas
17	2.1121.109.2	1	self-locking nut m 12 p.1.25
18	2.1310.007.2	1	flat washer 13 x 24
19	0.040.1521.0/10	1	gear z = 27
20	0.036.1520.3/40	1	pump casing * 58633 <= - N.1 - 044.1524.6
21	2.1559.166.0	1	special bushing
22	0.036.1524.3/40	1	rotor * 58633 <= - N.1 - 044.1524.6
23	2.1720.005.0	1	key 4x5
24	2.0112.215.2	2	screw m 8 p.1.25 x 40
25	2.7099.460.0	1	pressure switch

FUEL SUPPLY SYSTEM

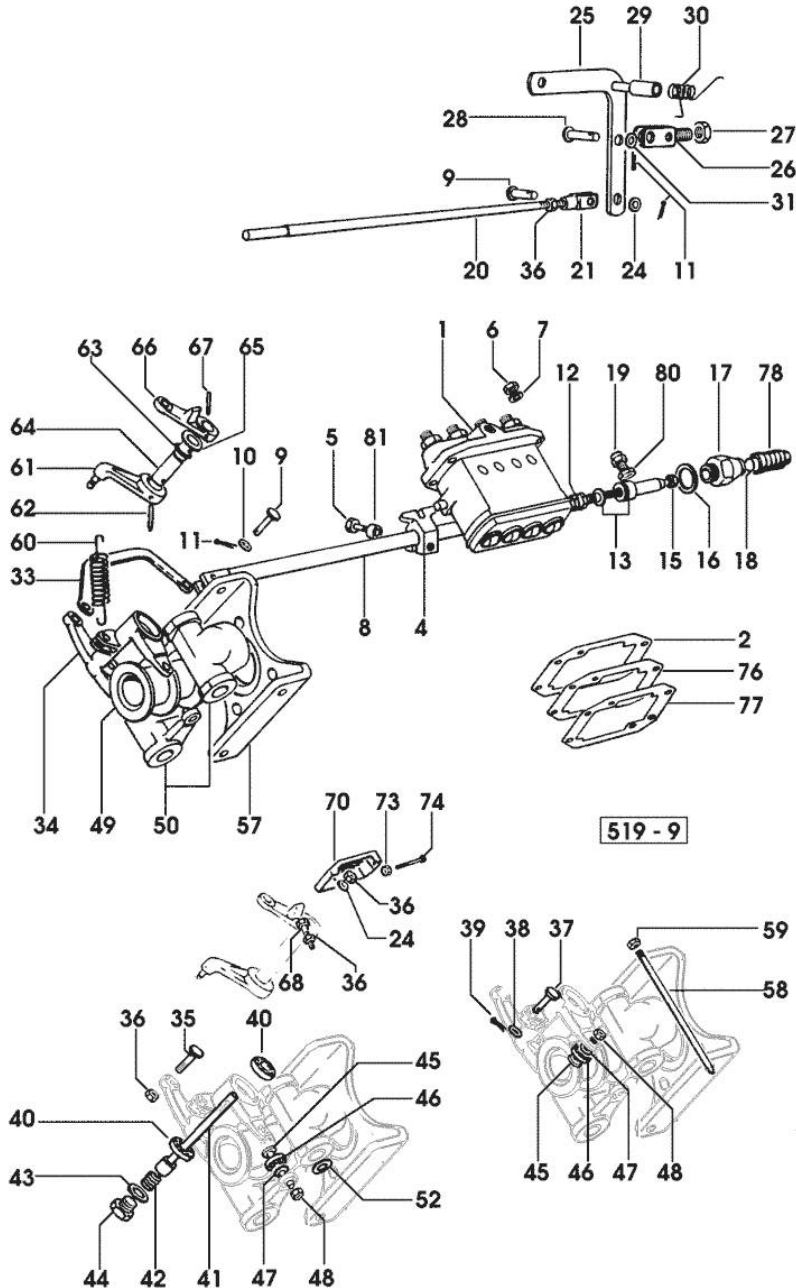


Fig.	P/n	QTY	Name
------	-----	-----	------

Notes:

[LASER 85 TRANSPORTER]

1	2.4649.280.0	1	injector pump ☞ 2.4649.280.0 ☞ 01.00.10
2	0.044.1652.0	1	shim mm 0.1
2	0.044.1653.0	2	shim mm 0.20
4	0.074.1653.0	1	bracket
5	2.0112.015.2	1	screw m 6 p.1x40
6	2.1099.056.2	4	special nut m 8 p.1 x 8
7	2.1311.006.2	4	flat washer 8
8	0.044.1613.2	1	rod
9	2.1679.065.2	2	pin 6x18x15
10	2.1311.004.2	1	flat washer 6, d128
11	2.1690.206.2	3	split pin A2x15
12	2.4019.178.1/10	1	spring 14.6x34x0.8
13	0.062.1652.6	1	adapter
15	2.1011.505.2	1	nut m 8 p.1
16	2.1560.019.0	1	copper gasket 24.3x30
17	0.041.1666.0/40	1	plug
18	2.1530.015.0	1	oil seal 8.30x2.40
19	0.044.1669.3/20	1	adapter
20	0.044.1651.0/30	1	ferrule
21	2.3510.003.2	1	fork m 6
24	2.1310.002.2	3	flat washer 6.4x12.5
25	0.048.1666.2	1	lever
26	0.044.1656.0	1	support
27	2.1011.506.2	1	nut m 10 p.1
28	2.1670.311.2	1	pin 8x38x35
29	2.1579.159.2	1	spacer 8.8x12x16
30	2.4099.017.7	1	spring
31	2.1310.004.2	1	flat washer 8.4x17
33	0.074.1622.0	1	rod
34	0.062.1619.0	1	lever
35	0.074.1655.0	1	pin
36	2.1011.103.2	5	nut m 6 p.1
37	2.1670.005.2	1	pin 5x22x20
38	2.1310.001.2	1	flat washer 5.3 x 10
39	2.1690.104.2	1	split pin 1.6x10
40	2.2999.158.0	2	special bearing
41	0.041.1620.0	1	pin
42	2.4019.283.1	1	spring
43	2.1560.008.0	1	gasket 12.2 x 18

FUEL SUPPLY SYSTEM

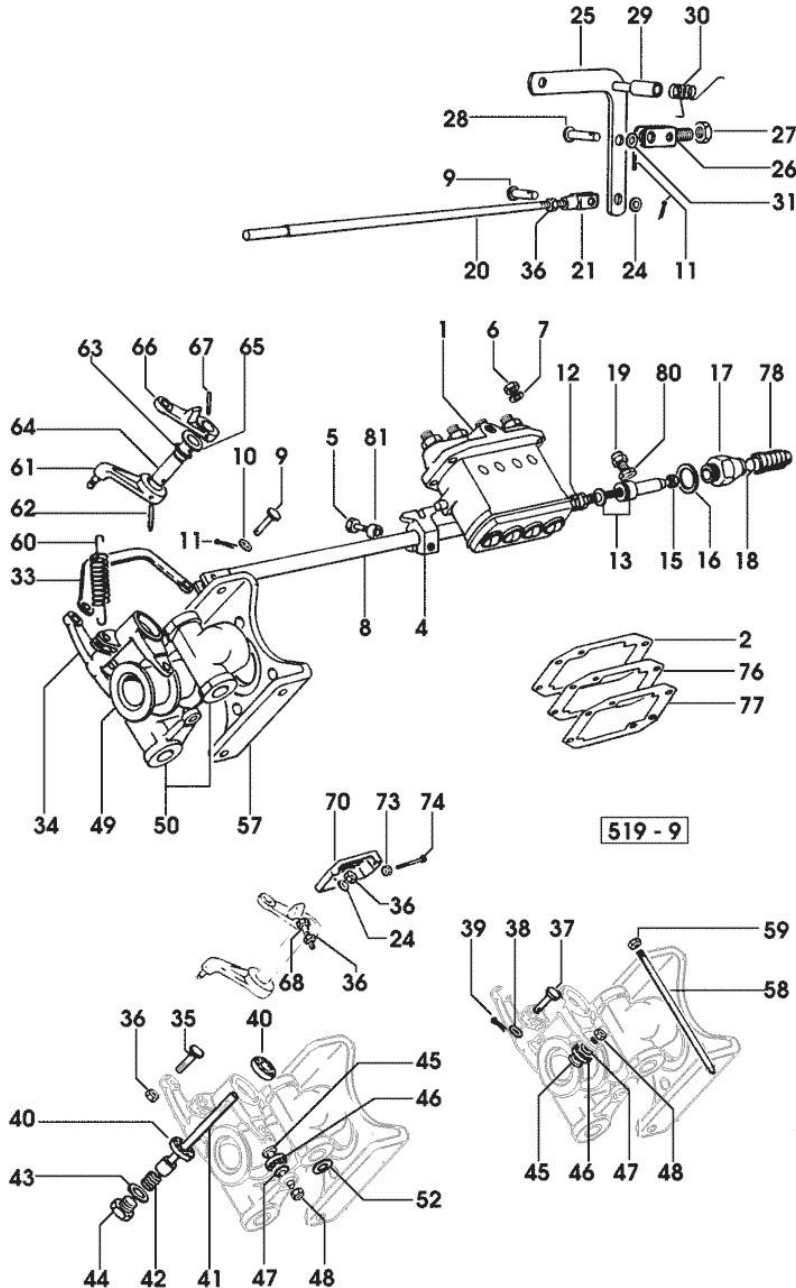
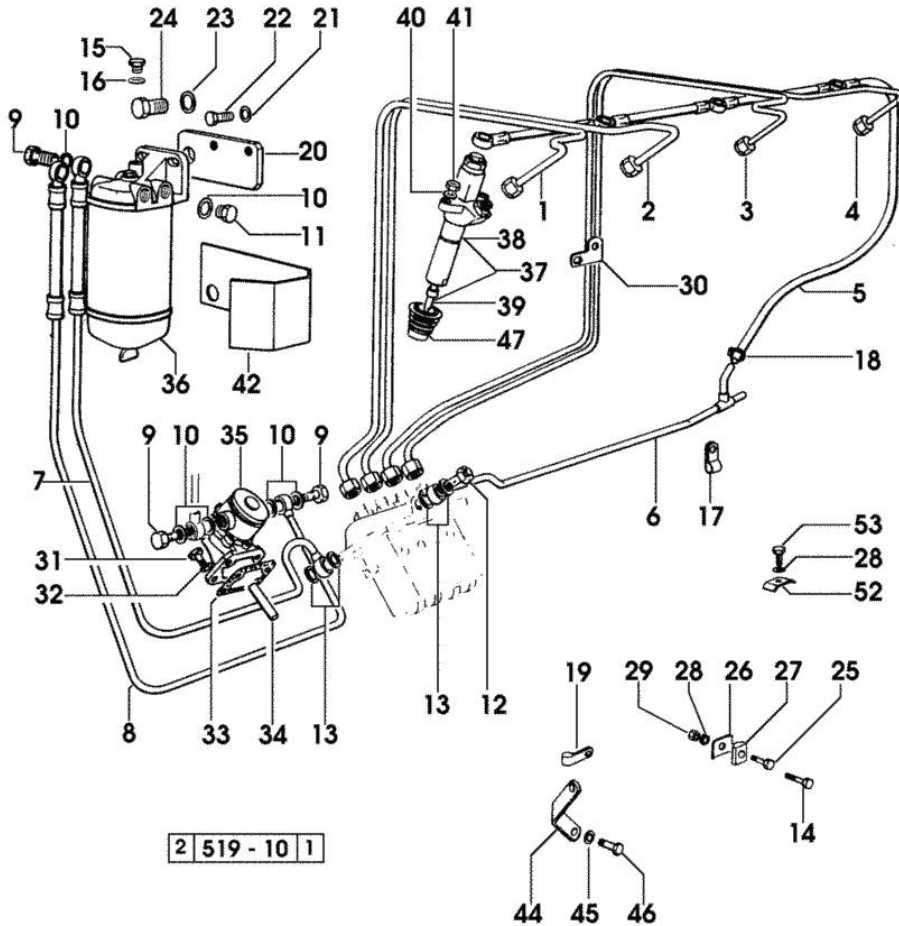


Fig.	P/n	QTY	Name
44	2.3110.302.1	1	plug m 12 p.1.75 x 10
45	0.054.1654.0/10	4	pin
46	0.062.1653.0	4	roller
47	2.1480.012.1	4	washer 6, d128
48	2.1019.007.1	4	special nut m 6 p.1
49	0.071.1618.0	1	sleeve
50	0.062.1616.0	2	adjust.rocker
52	2.1599.248.1	1	shim 7x11x1
57	0.062.1615.0	1	bracket
58	0.062.1617.0/10	2	pin
59	2.1120.305.2	2	self-locking nut m 8 p.1 x 8
60	2.4049.095.1/10	1	spring
61	0.042.1621.0	1	lever
62	2.1630.511.0	1	roll pin 5x24
63	2.1530.016.0	1	oil seal 8.73 x 1.78
64	0.041.1655.0/10	1	pin
65	2.1599.141.0	1	shoulder ring 12.5x19x1.5
66	0.041.1621.0	1	lever
67	2.1630.410.0	1	roll pin 4 x 20
68	2.0112.009.2	1	screw m 6 p.1 x 25
70	0.052.1661.2/20	1	small cover
73	2.1011.102.2	1	nut m 5 p.0.7
74	2.0220.317.2	1	screw m 5x0.8x35
76	0.044.1660.0	2	shim mm 0.1
76	0.044.1661.0	3	shim mm 0.20
77	0.044.1674.0	1	shim mm 0.50
78	0.000.5617.0	1	guard
80	2.1099.066.1	1	special nut
81	2.1579.455.1	1	spacer 6.2x12x14

Section: ENGINE
FUEL SUPPLY SYSTEM

Fig.	P/n	QTY	Name
------	-----	-----	------

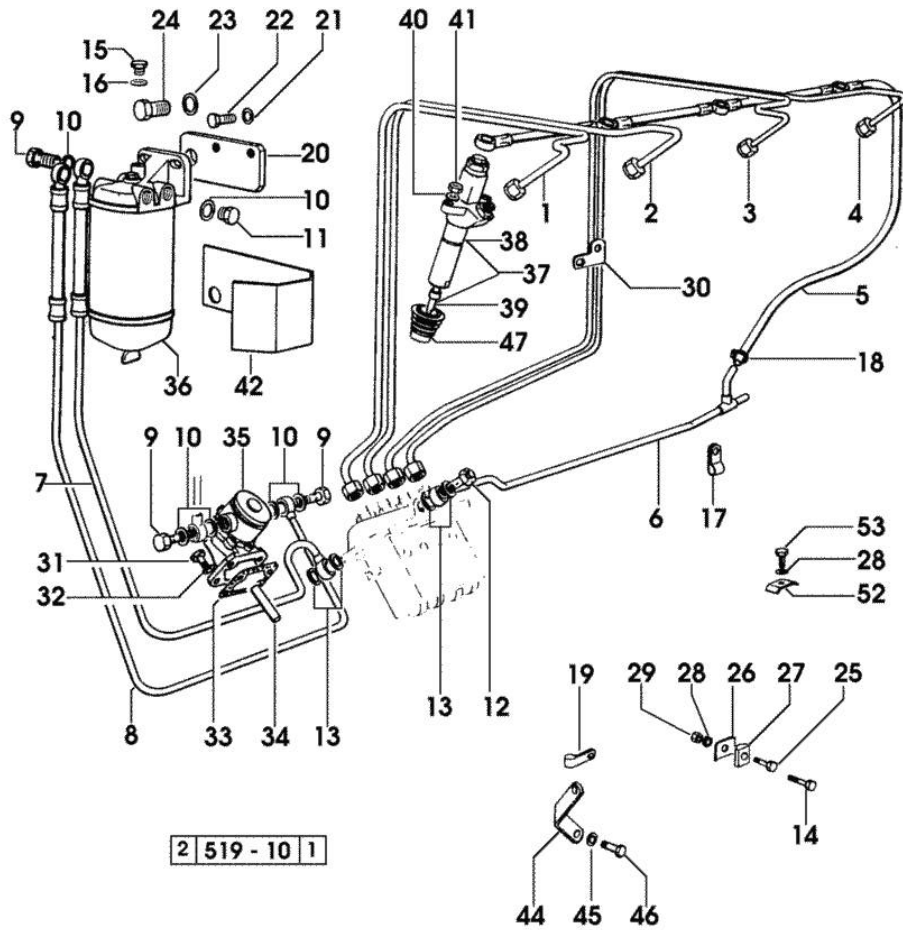
Notes:
 [LASER 85 TRANSPORTER]



1	0.044.1630.3/10	1	tube
2	0.044.1631.3/10	1	tube
3	0.044.1632.3/10	1	tube
4	0.044.1633.3/10	1	tube
5	0.062.1663.3	1	tube
6	0.062.1662.3	1	tube
7	0.062.1661.3/10	1	tube
8	0.073.1645.3/10	1	tube
9	2.3332.004.1	4	pipe union m 14 p.1.5
10	2.1560.010.0	10	gasket 14.2 x 20
11	2.3110.403.1	2	plug m 14 p.1.5x12
12	0.045.1651.4	1	valve
13	2.1560.008.0	4	gasket 12.2 x 18
14	2.0112.009.2	2	screw m 6 p.1 x 25
15	2.3119.005.2	1	plug m 10 p.1.5
16	2.1560.005.0	1	copper gasket 10.2 x 14
17	2.6839.034.2	1	bracket
18	2.6850.002.0	1	clamp
19	2.6839.035.2	1	bracket
20	0.062.1650.0	1	bracket
21	2.1310.006.2	2	flat washer 10.5x21
22	2.0112.307.2	2	screw m 10 p.1.5 x 20
23	2.1470.009.2	1	lock washer 16
24	2.0112.609.2	1	screw m 16 p.2 x 25
25	2.0112.007.2	3	screw m 6 p.1 x 20
26	0.002.8816.0	7	small plate
27	0.021.1668.0	4	small block
28	2.1470.002.2	5	lock washer 6
29	2.1011.103.2	5	nut m 6 p.1
30	0.048.1655.0	2	square
31	2.0112.207.2	4	screw m 8 p 1.25 x 20
32	2.1474.009.2	4	spring washer 8
33	0.056.1651.0	1	gasket
34	0.044.1655.0/20	1	ferrule
35	2.4519.230.0/10	1	feed pump ☞ 2.4519.230.0/10 ☞ 01.00.11
36	2.4319.060.0/10	1	fuel filter ☞ 2.4319.060.0/10 ☞ 01.00.12
37	2.4719.180.0	4	injector assembly BOSCH

FUEL SUPPLY SYSTEM

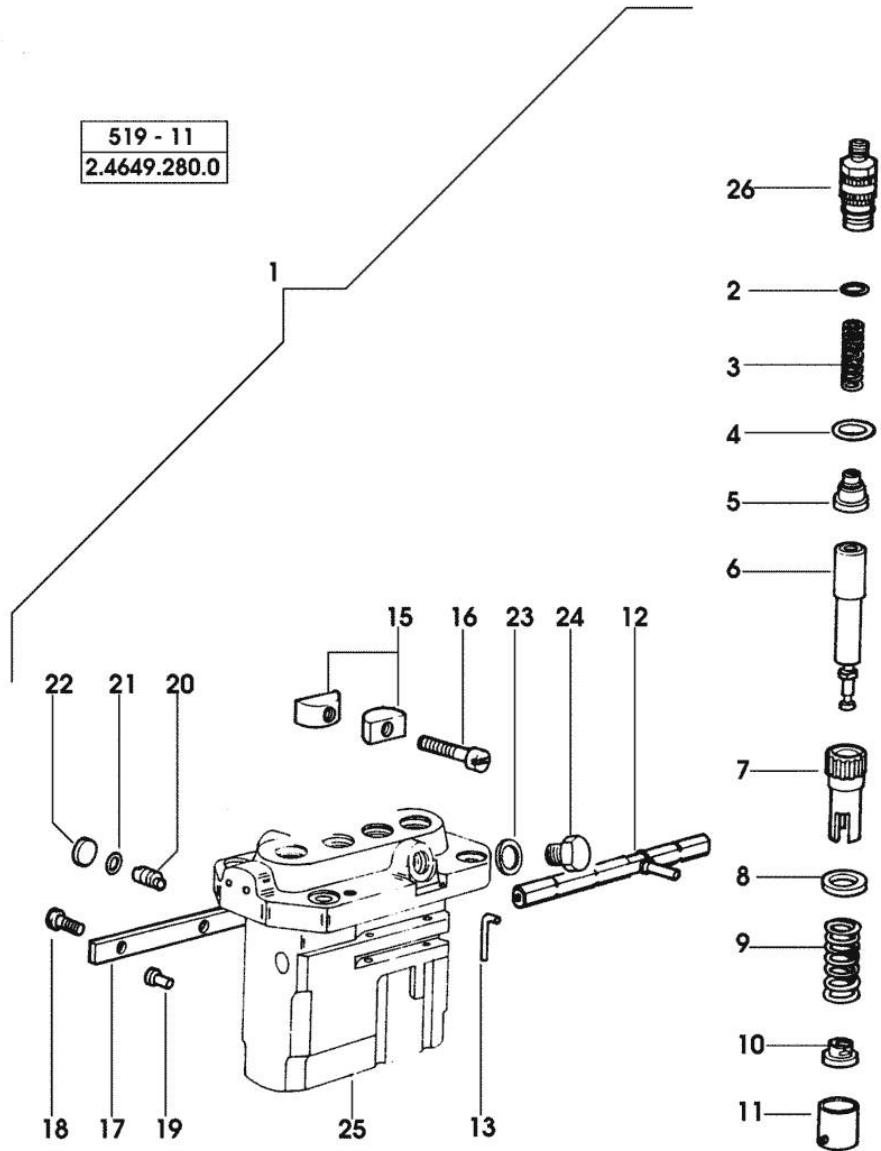
Fig.	P/n	QTY	Name
38	2.4719.010.0	1	nozzle holder BOSCH ☞ 2.4719.010.0 ☞ 01.00.13
39	2.4729.010.0	1	nozzle BOSCH
40	2.1475.202.7	8	spring washer 8.5
41	2.1099.009.1/10	8	nut
42	0.062.1654.0	1	small guard
44	0.040.1654.0	2	square
45	2.1470.006.2	4	lock washer 10
46	2.0119.099.2	2	screw
47	0.062.1647.0	4	cooling jacket
52	0.154.6377.0	1	terminal
53	2.0112.005.2	2	screw m 6 p.1 x 16



INJECTION PUMP PARTS

Fig.	P/n	QTY	Name
------	-----	-----	------

Notes:
[LASER 85 TRANSPORTER]



1	2.4649.280.0	1	injector pump ☞ 2.4649.280.0
2	2.4629.150.4	4	gasket
3	2.4629.150.5	4	spring
4	2.4629.150.6	4	gasket
5	2.4629.150.7	4	valve
6	2.4629.150.8	4	pumping element
7	2.4629.151.7	4	bush
8	2.4639.112.0	4	cap-washer
9	2.4629.150.9	4	spring
10	2.4629.151.0	4	cap-washer
11	2.4629.151.1	4	tappets
12	2.4649.280.2	1	rod
13	2.4649.280.4	2	pin
15	2.4629.010.2	3	terminal
16	2.0220.415.2	3	screw m 6 p.1x28
17	2.4649.280.3	1	small plate
18	2.0250.302.2	2	screw
19	2.4649.281.0	4	plug
20	2.4649.280.7	4	pin
21	2.4649.280.8	4	oil seal
22	2.4649.280.9	4	plug
23	2.1560.008.0	1	gasket 12.2 x 18
24	2.3110.402.1	1	plug m 12 p.1.5x10
25	0.000.0000.1		cannot be supplied
26	2.4629.150.3	4	bush

Section: ENGINE

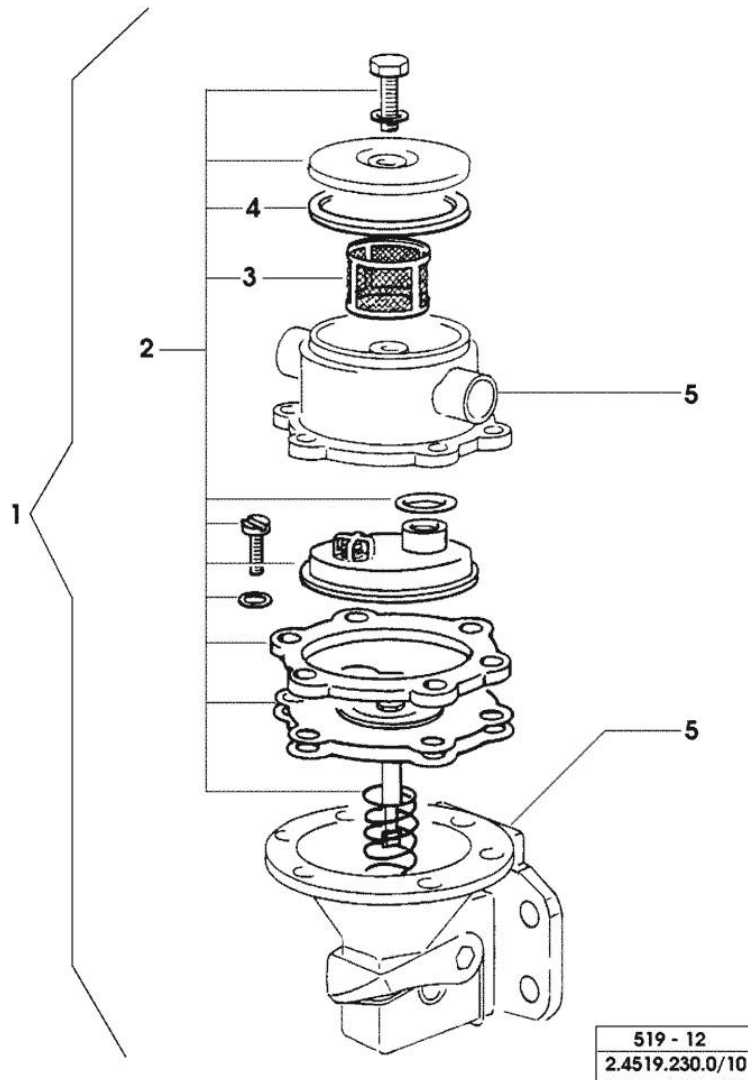
FUEL PUMP PARTS

Fig.	P/n	QTY	Name
------	-----	-----	------

Notes:

[LASER 85 TRANSPORTER]

1	2.4519.230.0/10	1	feed pump ☞ 2.4519.230.0/10
2	2.4519.239.0	1	accessories
3	2.4519.190.2	1	filter
4	2.1560.322.0	1	gasket
5	0.000.0000.1		cannot be supplied



FUEL FILTER PARTS

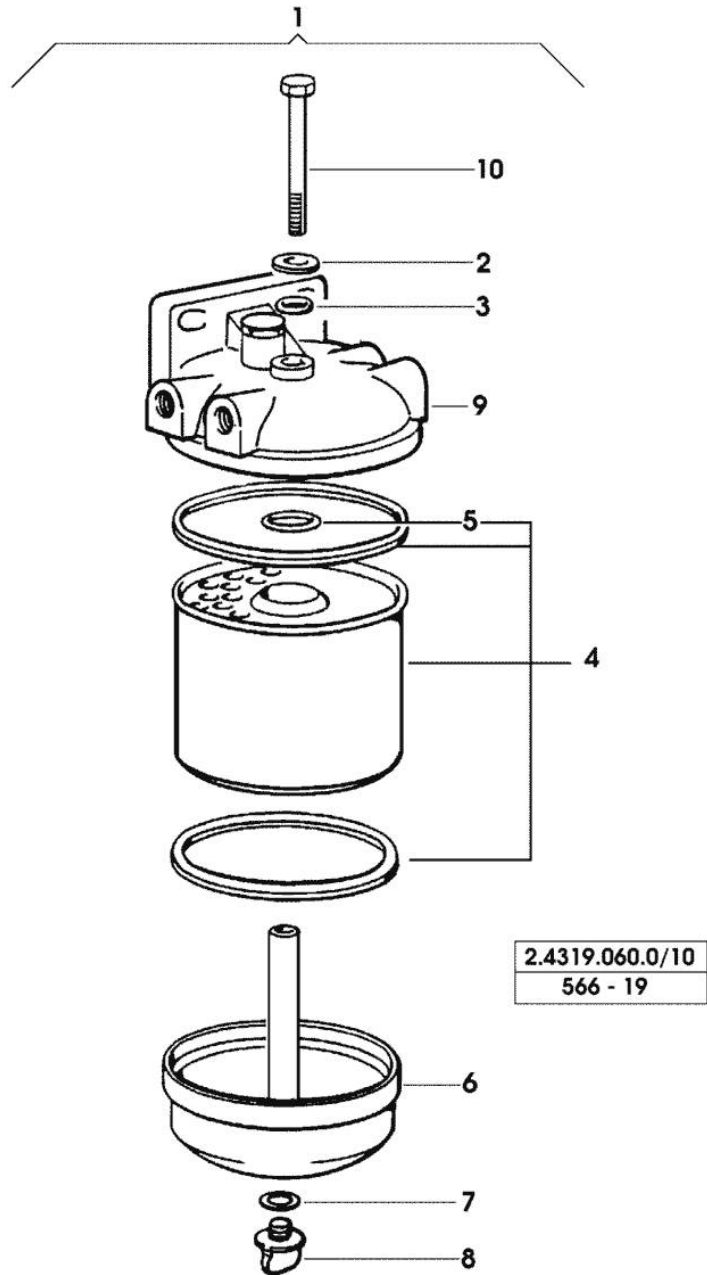


Fig.	P/n	QTY	Name
Notes:			
[LASER 85 TRANSPORTER]			
1	2.4319.060.0/10	1	fuel filter ☞ 2.4319.060.0/10
2	2.4319.060.6	1	flat washer 6.5x12.5x1.5
3	2.1530.010.0	1	oil seal 6.07x1.78
4	2.4319.060.1	1	fuel filter element
5	2.1530.034.0	1	oil seal 13.95x2.62
6	2.4319.061.1	1	small tank
7	2.4319.061.2	1	gasket 8x14x1.5
8	2.4319.061.3	1	plug m 8 p.1.25
9	0.000.0000.1		cannot be supplied
10	2.4319.060.2	1	screw

INJECTOR NOZZLE HOLDER COMPONENTS

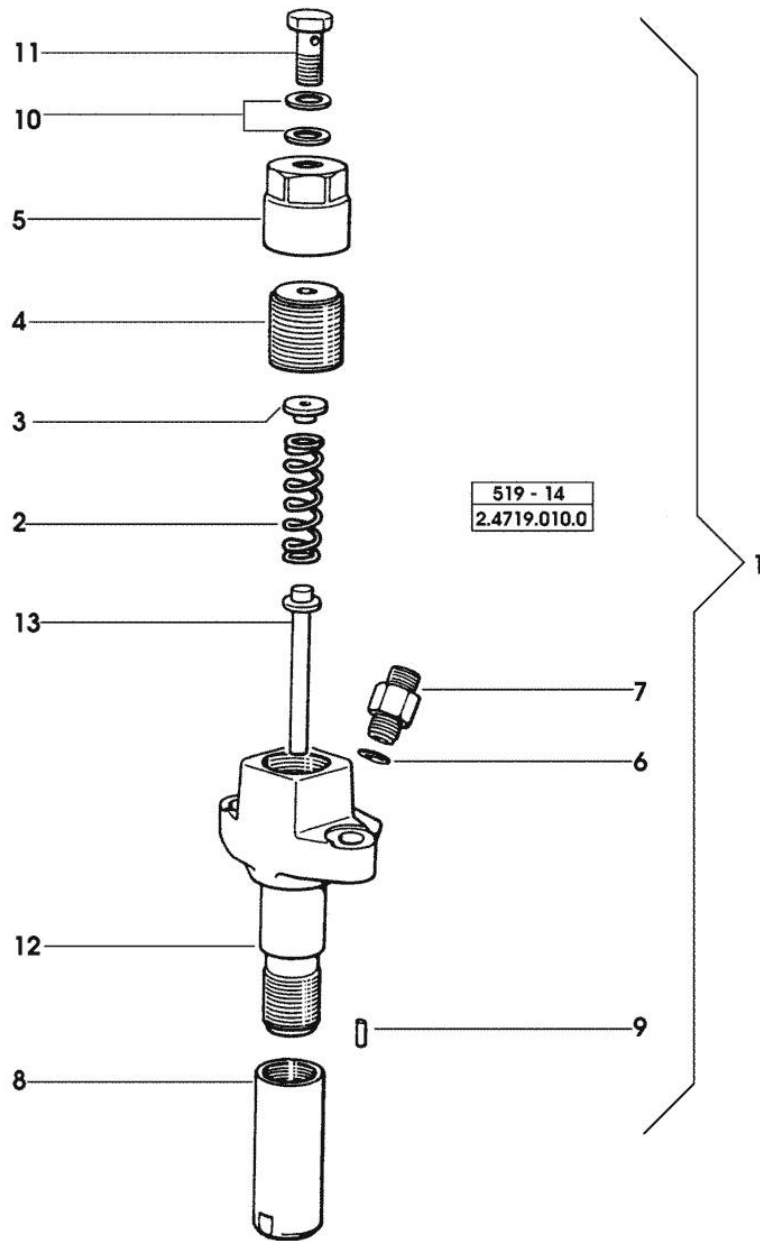


Fig.	P/n	QTY	Name
Notes:			
[LASER 85 TRANSPORTER]			
1	2.4719.010.0	1	nozzle holder BOSCH ☞ 2.4719.010.0
2	2.4719.010.2	1	spring
3	2.4719.010.3	1	bush
4	2.4719.010.4	1	ring nut
5	2.4719.010.5	1	small cap
6	2.1311.004.2	1	flat washer 6, d128
7	2.4719.010.6	1	pipe fitting
8	2.4719.010.8	1	ring nut
9	2.4719.172.0	2	roll pin
10	2.1560.004.0	2	copper gasket 8.2 x 14
11	2.3339.004.1	1	pipe union m 8 p.1 x 8
12	0.000.0000.1		cannot be supplied
13	2.4719.010.1	1	pin

Thank you so much for reading.
Please click the “Buy Now!”
button below to download the
complete manual.



After you pay.

You can download the most
perfect and complete manual in
the world immediately.

Our support email:

ebooklibonline@outlook.com