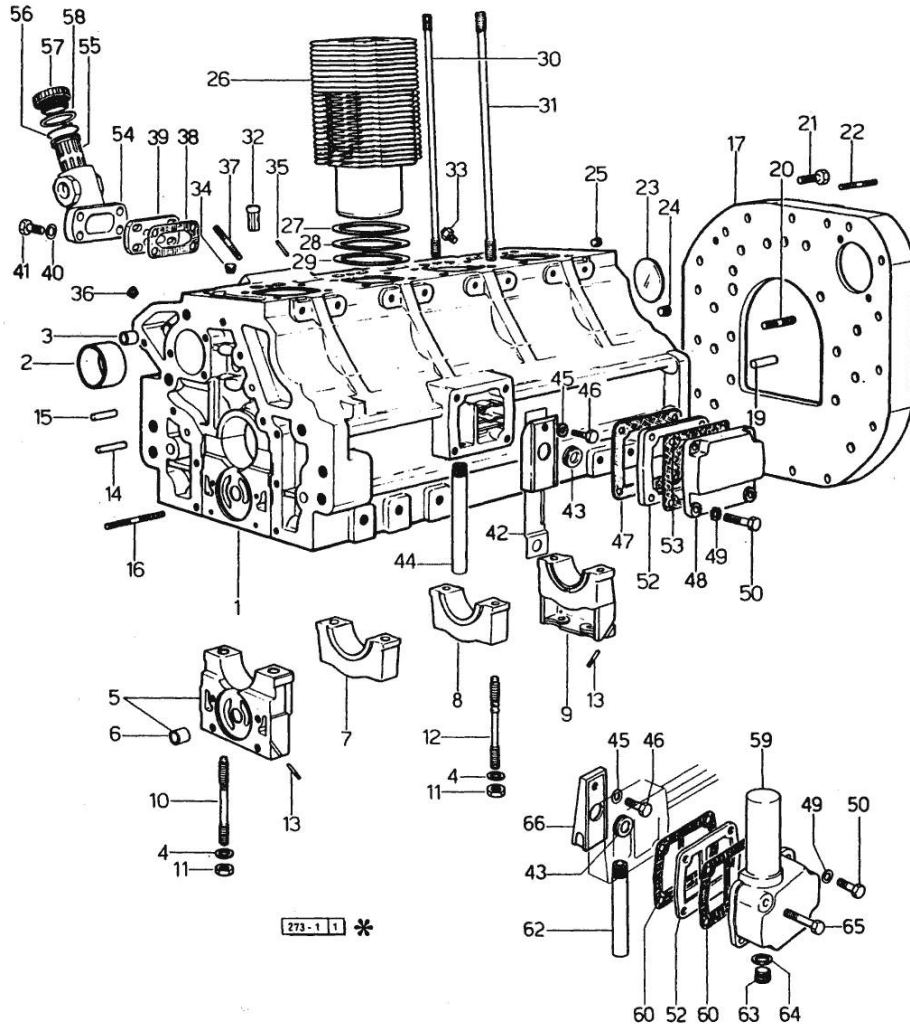


Section: ENGINE  
CRANKCASE

Fig.	P/n	QTY	Name
------	-----	-----	------

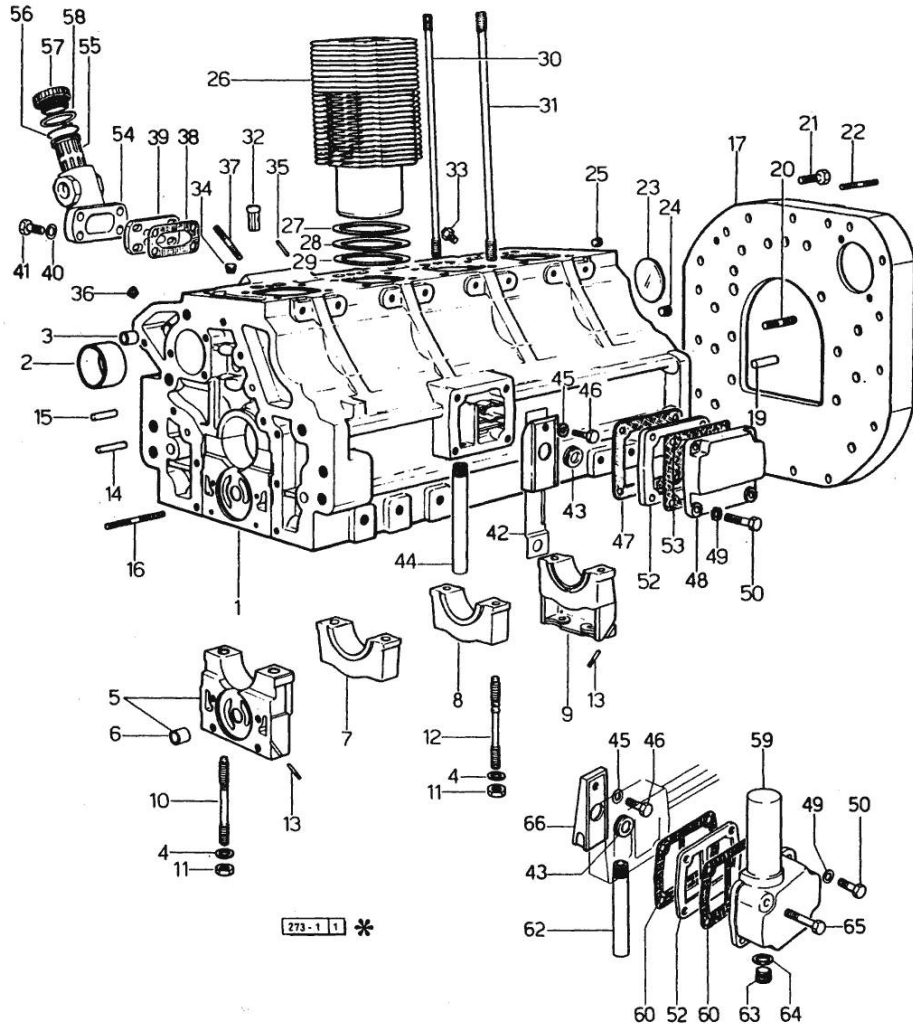
Notes:  
[LASER 90]

0	0.062.0050.6	1	gasket set - FOR ENGINE MOUNTING
1	0.045.1110.4/20	1	crankcase 2713 <= ORDER ALSO: 1x 045.1240.0 - 2x 2.1474.010.1
2	0.037.1155.0	1	bushing
3	2.1559.111.0/10	2	special bushing 11.5x14.1x10
4	2.1599.406.0	10	shoulder ring
5	0.004.8774.3	1	support
6	2.1559.090.0/10	1	bushing 14.24x19.06x27
7	0.037.1114.0	1	support
8	0.029.1113.0	2	support
9	0.029.1116.0	1	support
10	0.021.1157.0	4	stud bolt
11	2.1019.026.7	10	special nut m 12 p.1.5
12	0.029.1117.0	6	stud bolt
13	0.029.1154.0/10	4	gasket
14	2.1699.114.0	1	pin 8x55
15	2.1653.711.0	1	pin
16	2.0432.025.1	2	stud bolt m 8 p 1.25-1x100
17	0.071.1150.0	1	flange
19	2.1652.911.0	2	cylindrical plug 12x25
20	2.0432.153.1	2	stud bolt m 10 p.1.5 / p.1.25 x 20
21	2.0112.513.1	11	screw m 14 p.2 x 35
22	2.0432.257.1	2	stud bolt m 12 p.1.75 - 1.25 x 30
23	2.3170.022.1	1	expansion plug 60
24	2.3130.003.1	2	plug 3/8" gas
25	2.3130.002.1	1	plug 1/4" gas
26	0.044.1120.0/10	4	engine cylinder
27	2.1589.052.0	8	shoulder ring 115x123x0.2
28	2.1589.051.0	4	shoulder ring 116x123x0.1
29	2.1569.076.0	4	gasket 116x123x0.5
30	0.041.1123.0/10	4	stud bolt
31	0.039.1122.0	16	stud bolt m 12 p.1.5x310
32	0.044.1156.0	8	special bushing
33	0.071.1151.3	4	valve
34	2.3130.001.1	4	plug 1/8" gas
35	2.1652.507.0	2	pin 6x16
36	2.3139.001.1	5	plug
37	2.0432.003.1	4	stud bolt m 8 p.1.25 / p.1 x 20
38	0.044.1151.0	2	gasket
39	0.045.1154.2	1	old part number



Section: ENGINE  
CRANKCASE

Fig.	P/n	QTY	Name
40	2.1310.004.2	4	flat washer 8.4x17
41	2.0112.211.2	4	screw m 8 p.1.25 x 30
42	0.044.1162.2	1	small guard (...) <-
43	0.071.1156.0	1	special oil seal
44	0.044.1152.0/10	1	tube (...) <-
45	2.1474.009.1	1	spring washer 8
46	2.0312.206.2	1	screw m 8 p 1.25 x 20
47	0.044.1153.0/10	1	gasket
48	0.071.1154.0	1	small cover (...) <= ORDER ALSO: 1x 044.1153.0/10 - 1x 071.1153.0 - 4x 2.0112.211.2 - 1x 071.1155.2
49	2.1474.009.1	4	spring washer 8
50	2.0112.211.2	4	screw m 8 p.1.25 x 30
52	0.071.1153.0	1	small cover (...) <= ORDER ALSO: 1x 044.153.0/10 - 1x 071.1154.0 - 4x 2.0112.211.2 - 1x 071.1155.2
53	0.044.1153.0/10	1	gasket -> (...)
53	0.044.1161.0	1	gasket (...) <-
54	0.062.1151.0	1	flange
55	0.041.1159.0/10	1	filter
56	2.1411.012.1	1	circlip 30
57	0.041.1135.4	1	plug 1" gas
58	2.1569.072.0	1	gasket 32 x 39.5 x 2
59	0.074.1153.3	1	cover -> (...)
60	0.044.1153.0/10	2	gasket -> (...)
62	0.074.1155.2	1	tube -> (...)
63	2.3130.004.1	1	plug 1/2 gas -> (...)
64	2.1560.055.0	1	gasket 27.3x31.9 -> (...)
65	2.0112.224.2	1	screw m 8 p.1.25x75
66	0.071.1155.2	1	small guard -> (...)



Section: ENGINE

**TIMING CASE**

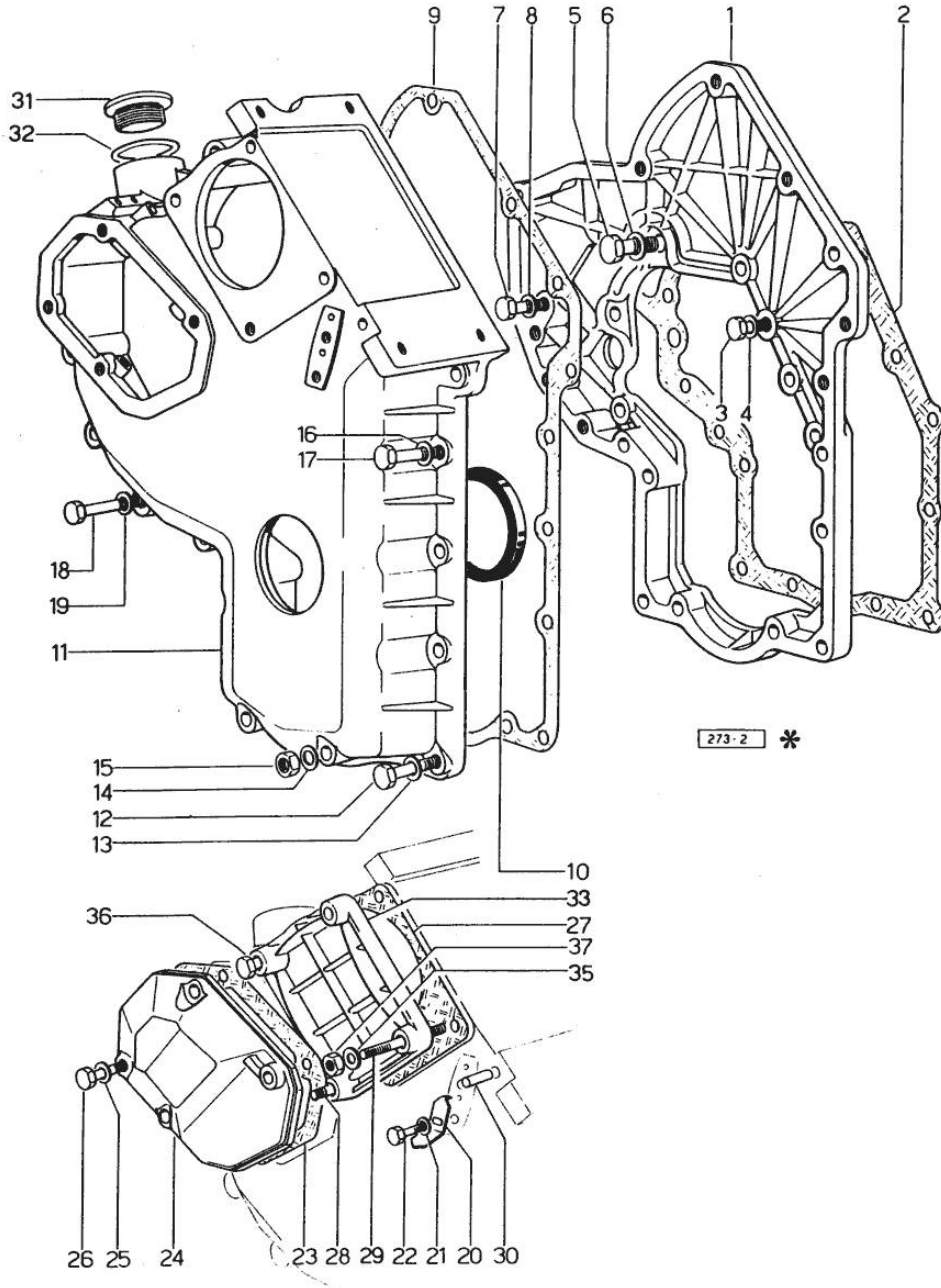


Fig.	P/n	QTY	Name
------	-----	-----	------

Notes:  
[LASER 90]

1	0.048.1131.0	1	flange
2	0.041.1153.0	1	gasket
3	2.0112.209.2	2	screw m 8 p 1.25 x 25
3	2.0112.211.2	3	screw m 8 p.1.25 x 30
4	2.1474.009.1	5	spring washer 8
5	2.0119.034.1	1	screw m 14 p.2x20
6	2.1560.010.0	1	gasket 14.2 x 20
7	2.0112.207.2	1	screw m 8 p 1.25 x 20
8	2.1474.009.1	1	spring washer 8
9	0.041.1152.0	1	gasket
10	2.1519.010.0	1	special oil seal 58x80x10
11	0.048.1132.0/40	1	guard
12	2.0112.217.2	5	screw m 8 p.1.25 x 45
13	2.1474.009.1	5	spring washer 8
14	2.1560.003.0	2	copper gasket 8.2 x 12
15	2.1011.405.2	2	nut m 8 p.1
16	2.1474.009.1	2	spring washer 8
17	2.0112.211.2	2	screw m 8 p.1.25 x 30
18	2.0112.209.2	2	screw m 8 p 1.25 x 25
18	2.0112.222.2	2	screw m 8 p.1.25x65
19	2.1474.009.1	4	spring washer 8
20	0.041.1158.0	1	index
21	2.1310.004.2	1	flat washer 8.4x17
22	2.0112.204.2	1	screw m 8 p.1.25x14
23	0.048.1151.0/10	1	gasket
24	0.048.1150.0/20	1	cover
25	2.1560.006.0	4	gasket 10.2 x 16
26	2.0112.315.2	4	screw m 10 p.1.5 x 40
27	0.041.1154.0	1	gasket
28	2.0432.015.1	1	stud bolt m 8 p 1.25 - m 8 p. 1x50
29	2.0432.028.1	2	stud bolt m 8 p.1.25-1x130
30	2.1653.717.0	1	pin 8 x 40
31	2.3199.002.2	1	plug 1 gas
32	2.1569.072.0	1	gasket 32 x 39.5 x 2
33	0.037.1151.0/10	1	cover
35	2.1310.004.2	4	flat washer 8.4x17
36	2.0112.235.2	1	screw m 8 p.1.25 x 130
37	2.1011.505.2	4	nut m 8 p.1

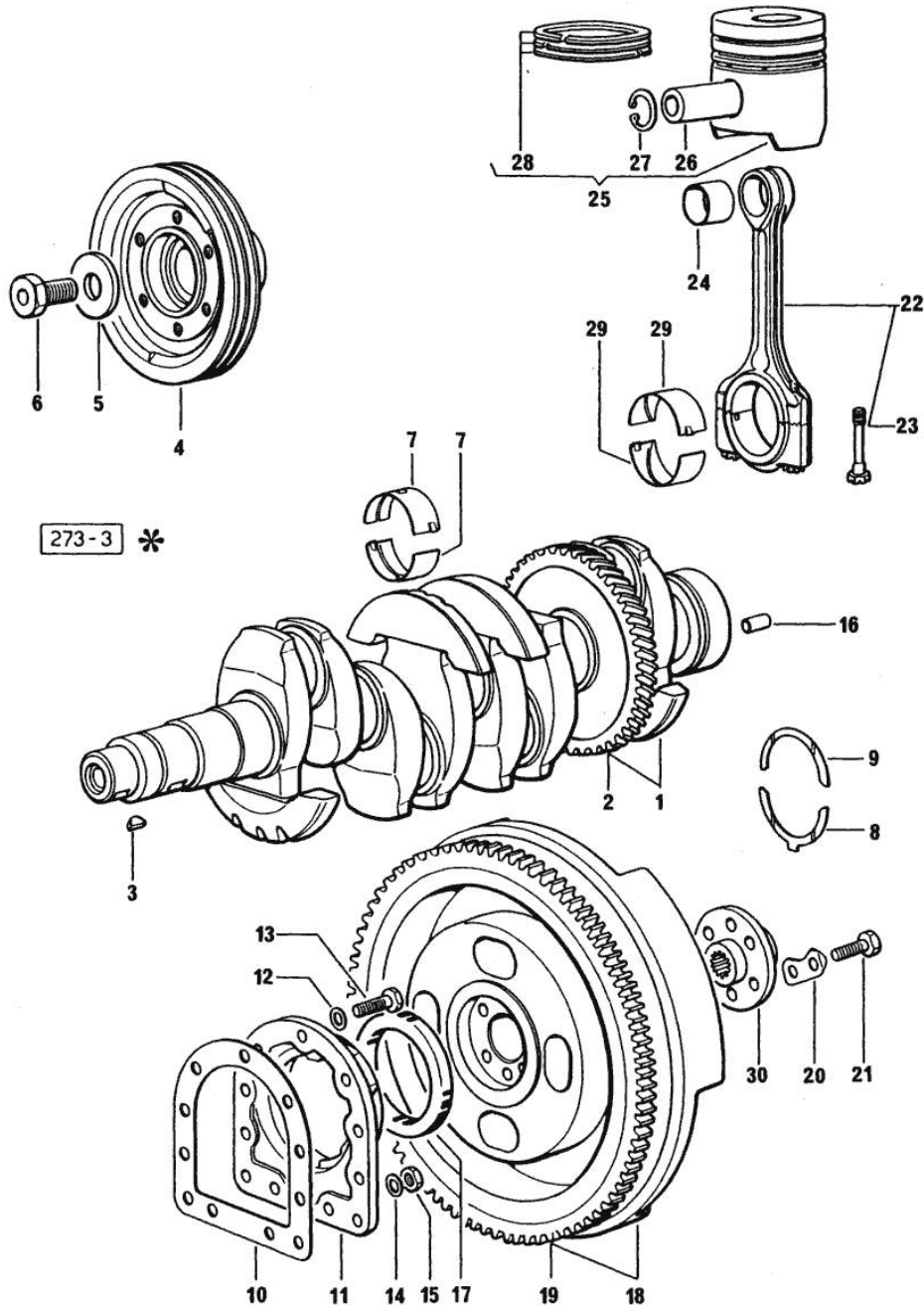
Section: ENGINE

**CRANKSHAFT**

Fig.	P/n	QTY	Name
------	-----	-----	------

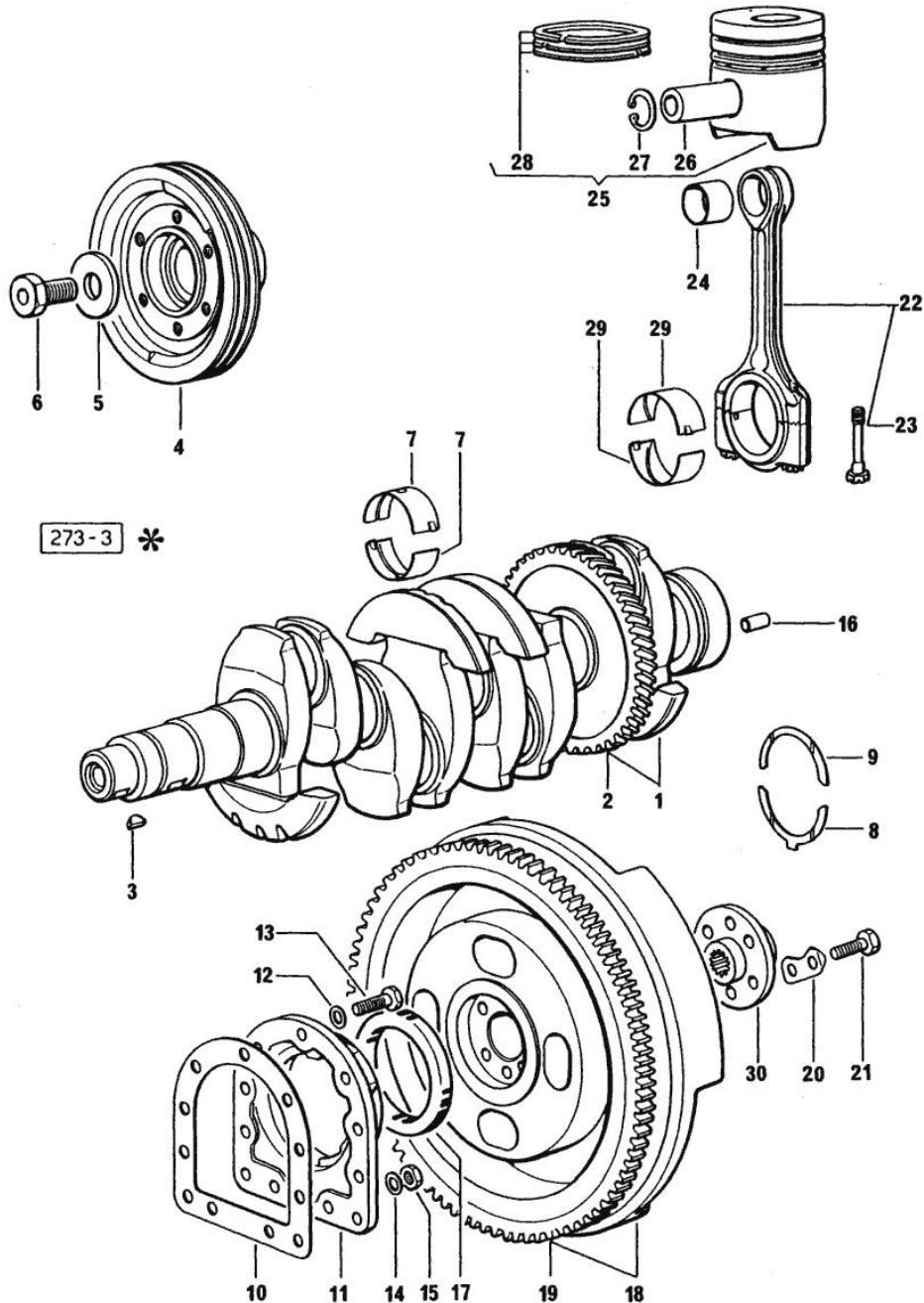
Notes:  
[LASER 90]

1	0.044.1267.3/30	1	crankshaft
1	0.044.1267.4/30	1	crankshaft
			3362 <= ORDER ALSO: 1x 2.1799.026.0
1	2.1630.611.0	1	roll pin 6 x 24
2	0.044.1265.0/20	1	gear
3	2.1799.002.0	1	stick 10x13
			3362 <-
3	2.1799.026.0	1	key 10x10
			-> 3363
4	0.062.1250.0	1	pulley
5	0.001.6020.0	1	shoulder
6	2.0129.032.2	1	screw m 24 p.2x45
7	0.073.0059.0	10	main half bushing - mm 1.00
7	0.073.1215.0	10	main half bushing STANDARD
7	0.073.1215.7	10	main half bushing - mm 0.25
7	0.073.1215.8	10	main half bushing - mm 0.50
7	0.073.1215.9	10	main half bushing - mm 0.75
8	0.001.4547.0	2	shoulder ring + mm 0.05
8	0.001.4548.0	2	shoulder ring + mm 0.10
8	0.001.4549.0	2	shoulder ring + mm 0.15
8	0.042.1219.0	2	shoulder ring STANDARD
9	0.001.4544.0	2	shoulder ring + mm 0.05
9	0.001.4545.0	2	shoulder ring + mm 0.10
9	0.001.4546.0	2	shoulder ring + mm 0.15
9	0.042.1218.0	2	shoulder ring STANDARD
10	0.029.1250.0/10	1	gasket
11	0.029.1240.0/10	1	flange
			2713 <-
11	0.045.1240.0	1	flange
			-> 2714
12	2.1474.010.1	9	spring washer 10
13	2.0112.309.2	9	screw m 10 p.1.5 x 25
14	2.1560.006.0	2	gasket 10.2 x 16
15	2.1011.321.2	2	nut m 10 p.1.25
16	2.1652.915.0	2	cylindrical plug 12x35
17	2.1519.009.0/10	1	special oil seal
18	0.046.1256.3	1	flywheel
			-> 2870
18	0.062.1241.3	1	flywheel
			2869 <-
19	0.036.1242.0	1	crown wheel Z = 126, mm 15



Section: ENGINE  
**CRANKSHAFT**

Fig.	P/n	QTY	Name
19	0.047.1242.0	1	2870 <- crown wheel z=128 >- 2869
20	2.1379.006.0	3	lock-tab 15x15x36,5
21	2.0122.517.7	6	screw m 14 p.1.5x45
22	0.039.1220.3/30	4	engine connecting rod
23	0.039.1250.0	8	screw m 14 p.1.5x63
24	0.002.4168.0	4	bearing
25	0.052.0060.6/20	4	complete piston
25	0.052.0061.6/20	4	complete piston + mm 0.5
25	0.052.0062.6/20	4	complete piston + mm 1.0
26	0.038.1236.0/10	4	piston pin Ø 18 / Ø 35 / L = mm 90
27	2.1411.014.1	8	circlip 35
28	0.071.0052.6	4	piston ring set
28	0.071.0053.6	4	piston ring set + mm 0.5
28	0.071.0054.6	4	piston ring set + mm 1.0
29	0.039.0068.0	8	con.rod half bushing - mm 1.016
29	0.062.1225.0	8	con.rod half bushing STANDARD
29	0.062.1225.7	8	con.rod half bushing - mm 0.25
29	0.062.1225.8	8	con.rod half bushing - mm 0.50
29	0.062.1225.9	8	con.rod half bushing - mm 0.75
30	0.170.3650.0	1	flange

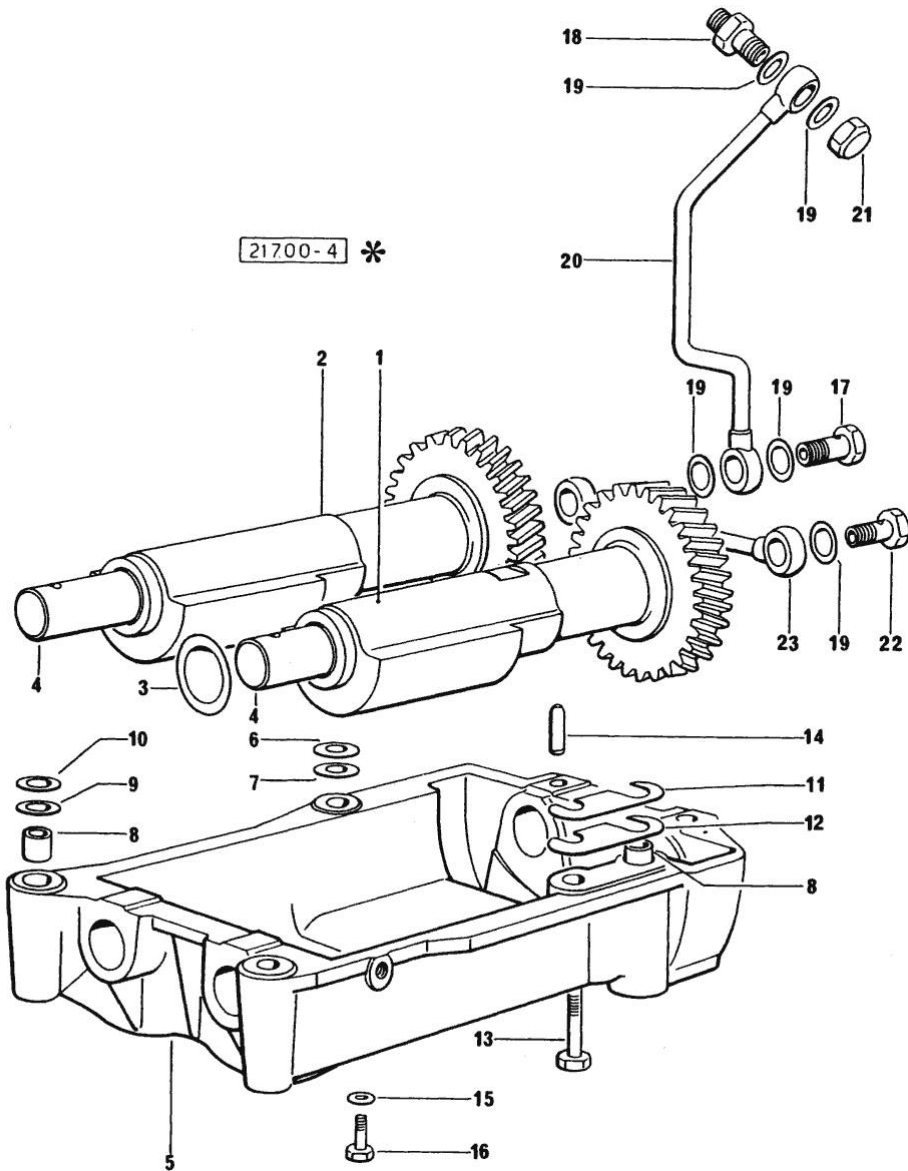


Section: ENGINE  
**COUNTERWEIGHTS**

Fig.	P/n	QTY	Name
------	-----	-----	------

Notes:  
 [LASER 90]

1	0.044.1263.3/20	1	mass sx/lh/li
1	2.1559.115.0	2	special bushing 26x30x30
2	0.044.1261.3/10	1	mass dx/rh/re
2	2.1559.115.0	2	special bushing 26x30x30
3	2.1589.050.0/10	4	shoulder ring 26.1x38x1
4	0.044.1266.0/20	2	shaft
5	0.044.1260.0/30	1	support
6	2.1589.049.0	2	shoulder ring 12.5x26x0.3
7	2.1579.629.0	4	spacer 12.5x26x0.1
8	2.1579.626.0	2	spacer 13.2x16x11
9	2.1579.628.0	1	spacer 16.5x26x0.1
10	2.1589.048.0	1	shoulder ring 16.5x26x0.3
11	2.1379.038.0	2	shim mm 0.1
12	2.1379.039.0	1	shim mm 0.3
13	2.0112.426.1	4	screw m 12 p.1.75x85
14	2.1631.717.0	2	roll pin 8 x 40
15	2.1310.004.2	1	flat washer 8.4x17
15	2.1474.009.1	1	spring washer 8
16	2.0112.204.2	2	screw m 8 p.1.25x14
17	2.3339.515.1	1	pipe union m 12 p.1.25
18	2.3319.041.1	1	pipe union m 12 p.1.25-p.1.75
19	2.1560.007.0	7	gasket 12.2x16
20	0.044.1562.2	1	tube
21	2.1019.048.1	1	special nut m 12 p.1.5
22	2.3332.003.1	1	pipe union m 12 p.1.25
23	0.319.1550.3	1	tube



Section: ENGINE

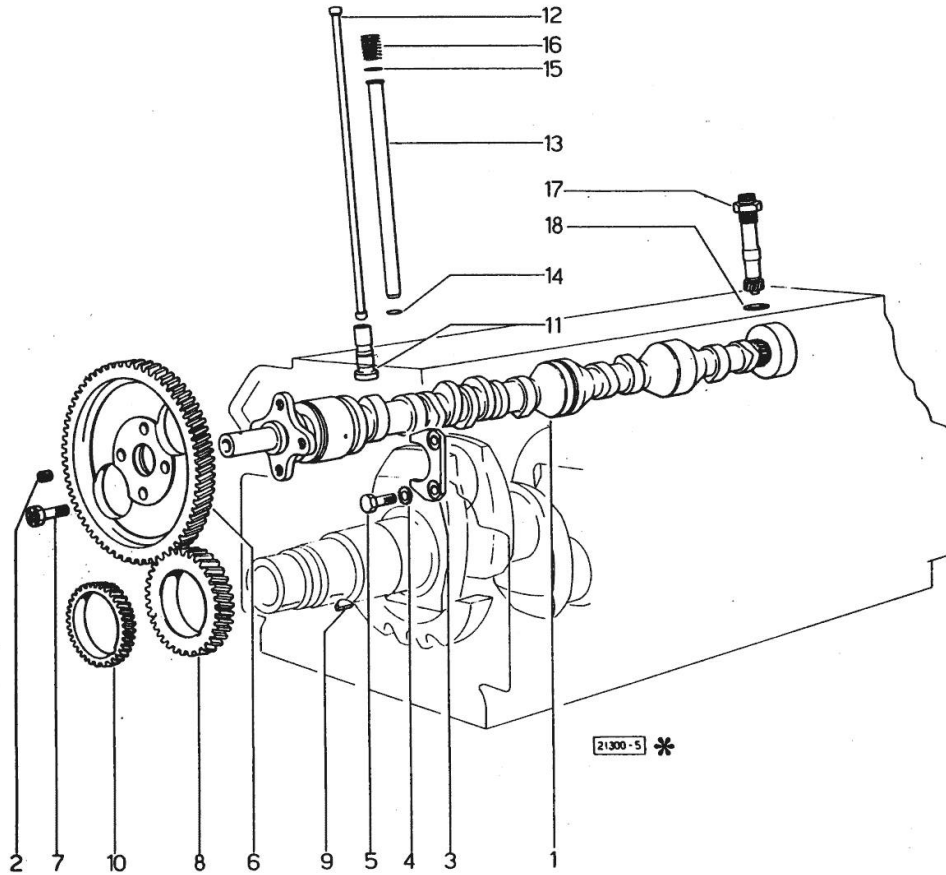
**CAMSHAFT**

Fig.	P/n	QTY	Name
------	-----	-----	------

Notes:

[LASER 90]

1	0.044.1310.0/40	1	camshaft
2	2.3130.001.1	1	plug 1/8" gas
3	0.027.1314.0/10	1	plate
4	2.1470.004.2	2	lock washer 8
5	2.0112.207.2	2	screw m 8 p 1.25 x 20
6	0.062.1321.0	1	gear z=66
7	2.0139.005.1	4	screw m 10 p.1 x 25
8	0.040.1320.0	1	gear z = 33
9	2.1720.010.0	1	key 5x9
10	0.040.1323.0/10	1	gear Z = 38
11	0.052.1330.0/20	8	tappets
12	0.041.1331.3	8	rod
13	0.041.1332.0	8	sleeve
14	2.1539.020.0	8	special oil seal 13.95x2.62
15	2.1539.022.0	8	special oil seal 12.37x2.62
16	2.4019.162.1/20	8	spring 17.2x46x1.8
17	0.041.1355.3	1	transmission
18	2.1560.013.0	1	gasket 18.2x22



Section: ENGINE  
CYLINDER HEAD

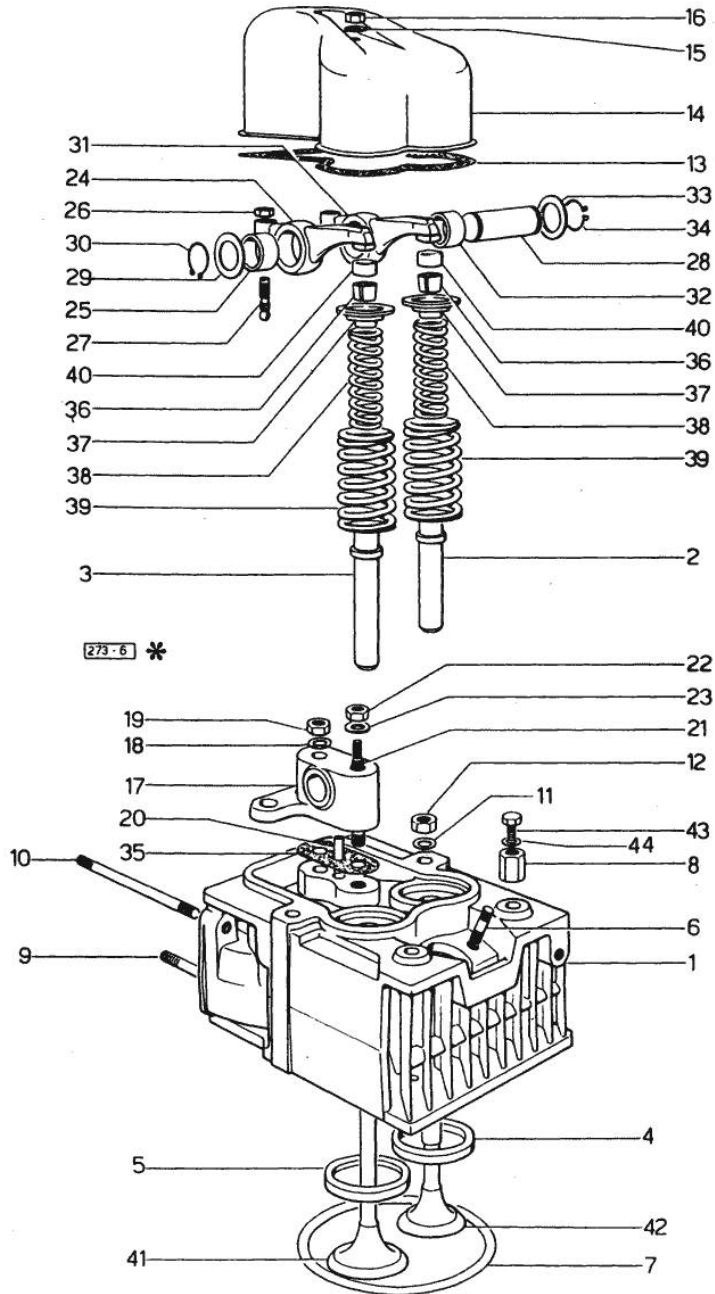


Fig.	P/n	QTY	Name
<b>Notes:</b> [LASER 90]			
0	0.062.0057.6	1	gasket set - FOR 1 CYLINDER VALVE GRINDING AND PISTON RINGS REPLACEMENT
1	0.062.1453.3	4	engine head 4649 <-
1	0.062.1453.3/10	4	engine head -> 4650
2	0.062.1417.0/10	4	valve guide
3	0.062.1416.0/10	4	valve guide
4	0.062.1450.0/10	4	valve seat
5	0.062.1451.0/10	4	valve seat 4649 <-
5	0.062.1454.0	4	valve seat -> 4650
6	2.0439.087.1/20	8	stud bolt m 8 p.1.25 / p.1 x 40
7	2.1569.078.0/10	4	gasket 106x118x0.5
8	2.1019.037.0	3	special nut m 12 p.1.5
9	2.0432.007.1	8	stud bolt m 8 p.1.25 / p.1 x 30
9	2.0432.009.1	2	stud bolt m 8 p.1.25 / p. 1 x 35 1726 <-
10	2.0432.023.1	3	stud bolt -> 3363
10	2.0432.026.1	4	stud bolt m 8 p.1.25 - 1.00 x 110
10	2.0432.157.1	1	stud bolt m 10 p 1.5 - 1.25 x 30
11	2.1599.406.0	16	shoulder ring
12	2.1019.025.0	13	special nut m 12 p.1.5
13	0.029.1450.0	4	gasket
14	0.039.1440.0	4	cap
15	2.1560.004.0	4	copper gasket 8.2 x 14
16	2.1099.056.1	4	special nut m8 p.1
17	0.041.1430.0	4	support
18	2.1599.160.0	4	washer 10.5x19x4
19	2.1099.035.0	4	special nut m 10 p.1.25
20	0.029.1452.0	4	tube
21	0.039.1451.0	4	stud bolt
22	2.1011.321.2	4	nut m 10 p.1.25
23	2.1310.006.2	4	flat washer 10.5x21
24	002.5937.3/30	4	rocker arm
25	2.1559.021.0/40	4	bushing 15x19x22
26	2.1011.405.2	8	nut m 8 p.1
27	0.021.1434.0	8	screw



Section: ENGINE  
CYLINDER HEAD

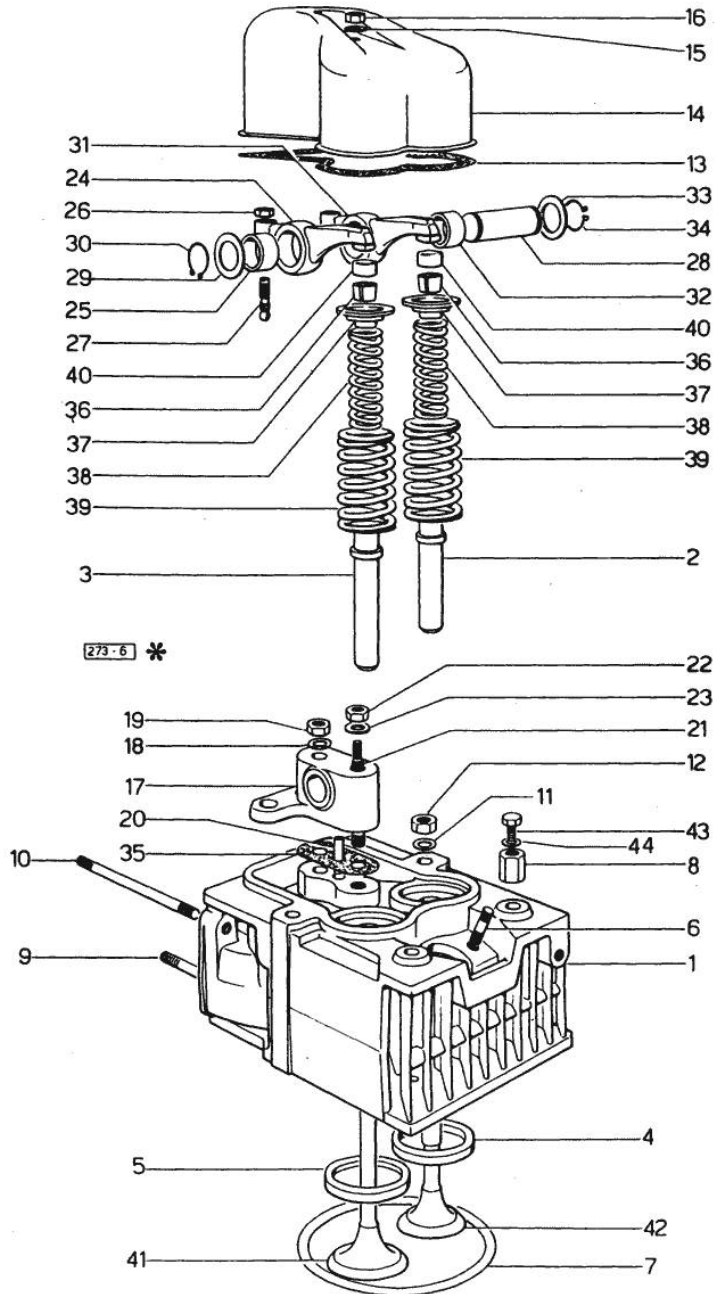


Fig.	P/n	QTY	Name
28	0.041.1431.0	4	pin
29	2.1599.019.0	4	shoulder ring 19.5x31x2
30	2.1410.055.1	4	circlip 19
31	0.002.5936.3/40	4	rocker arm
32	2.1559.021.0/40	4	bushing 15x19x22
33	2.1599.019.0	4	shoulder ring 19.5x31x2
34	2.1410.055.1	4	circlip 19
35	0.034.1450.0	4	tappet gasket
36	0.062.1423.0/10	8	conical valve cotter
37	0.062.1425.0	8	cup
38	2.4019.280.7	8	spring
39	2.4019.279.7	8	spring
40	0.062.1452.0	8	small cover
41	0.042.1420.2	4	inlet valve Ø mm 8 4549 <-
41	0.062.1420.2/10	4	inlet valve Ø mm 8 -> 4650
42	0.071.1420.2	4	exhaust valve Ø mm 8
43	2.0119.053.1	1	screw
44	2.1310.007.2	1	flat washer 13 x 24

Section: ENGINE  
LUBRICATION

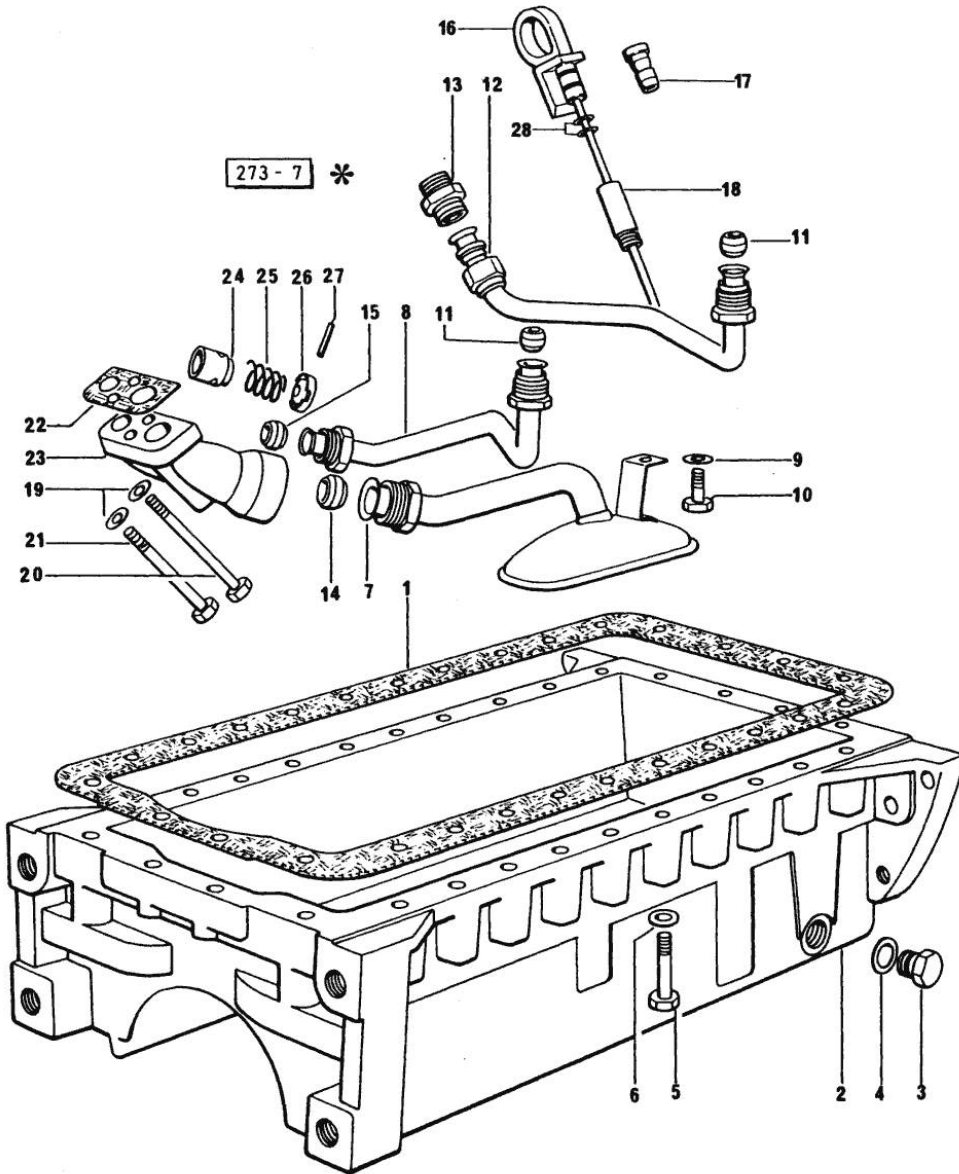


Fig.	P/n	QTY	Name
------	-----	-----	------

Notes:  
[LASER 90]

1	0.036.1512.0	1	gasket
2	0.045.1559.0	1	oil sump
3	2.3199.001.2	1	plug 1/2" gas
4	2.1560.054.0	1	gasket 21 x 26
5	2.0112.217.2	2	screw m 8 p.1.25 x 45
5	2.0112.224.2	20	screw m 8 p.1.25x75
5	2.0112.231.1	2	screw m 8 p 1.25x110
5	2.0112.237.2	4	screw m 8 p.1.25x140
6	2.1560.004.0	4	copper gasket 8.2 x 14
7	0.044.1556.3/10	1	tube
8	0.044.1560.2	1	tube
9	2.1310.004.2	1	flat washer 8.4x17
10	2.0112.204.2	1	screw m 8 p.1.25x14
11	2.3359.015.1	2	nosepiece
12	0.044.1561.2/10	1	tube
13	0.045.1557.0	1	pipe fitting
14	2.3359.014.1	1	nosepiece
15	2.3359.016.1	1	nosepiece
16	0.063.1513.2	1	dipstick
17	0.034.1551.0	1	gasket
18	0.044.1555.0	1	spacer
19	2.1474.009.1	2	spring washer 8
20	2.0112.231.1	1	screw m 8 p 1.25x110
21	2.0112.225.2	1	screw m 8 p.1.25 x 80
22	0.037.1557.0/20	1	gasket
23	0.052.1530.0	1	tip
24	0.052.1571.0	1	small piston
25	2.4019.270.1	1	spring 9.7x54x2
26	0.054.1558.0/10	1	stop
27	2.1630.213.0	1	roll pin 3x32
28	2.1539.065.0	2	special oil seal 8.73 x 1.78

Thank you so much for reading.  
Please click the “Buy Now!”  
button below to download the  
complete manual.



After you pay.

You can download the most  
perfect and complete manual in  
the world immediately.

Our support email:

[ebooklibonline@outlook.com](mailto:ebooklibonline@outlook.com)