

Section: ENGINE
CRANKCASE

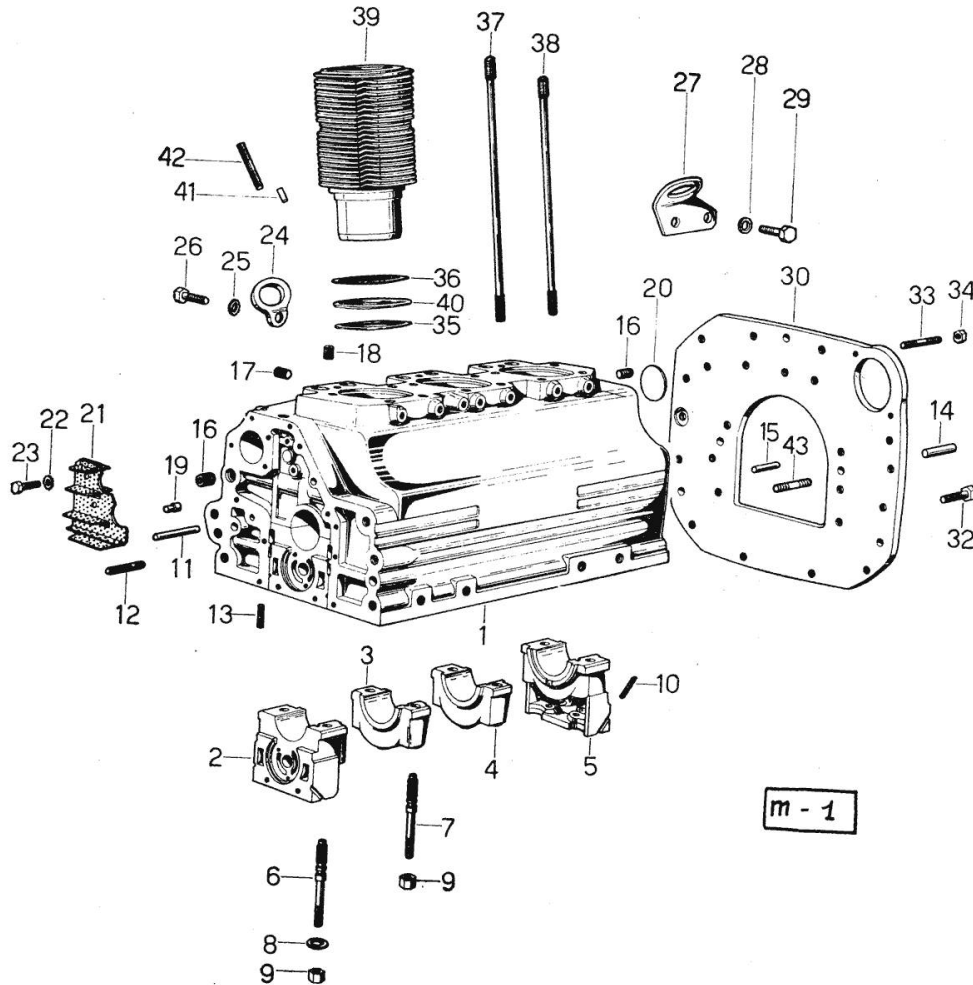


Fig.	P/n	QTY	Name
0	0.029.0050.6	1	gasket set
0	0.038.0050.6	1	FOR ENGINE INSTALLATION - 9800 <- old part number
0	0.038.0050.6/10	1	FOR ENGINE INSTALLATION -> 9801 11710 <- gasket set
1	0.029.1110.4/20	1	FOR ENGINE INSTALLATION -> 11711 old part number
1	0.035.1110.4/30	1	9800 <- crankcase -> 9801 - 11710 <- ORDER ALSO: 1x FLANGE 027.1154.0/30 1x PLATE 029.1155.2/20 1x SEAL 029.1153.0/10 1x FLANGE 029.1130.0/20
2	0.004.8776.0	1	support
3	0.029.1113.0	1	support
4	0.029.1113.0	1	support
5	0.029.1116.0	1	support
6	0.021.1157.0	4	stud bolt
7	0.029.1117.0	4	stud bolt
8	2.1599.144.7	8	shoulder ring 12.5x23x4
9	2.1019.026.7	8	special nut m 12 p.1.5
10	0.029.1154.0	4	gasket
11	2.1699.116.0	1	pin
12	2.0432.018.1	6	stud bolt m 8 p.1.25 / p.1 x 65
13	2.0432.003.1	24	stud bolt m 8 p.1.25 / p.1 x 20
14	2.1652.911.0	2	cylindrical plug 12x25
15	2.1653.708.0	2	pin 8x18
16	2.3130.002.1	2	plug 1/4" gas
17	2.3139.001.1	3	plug
18	2.3130.001.1	3	plug 1/8" gas
19	2.1699.021.0	1	pin 7.8x8x20
20	2.3170.022.1	1	expansion plug 60
21	0.029.1155.2	1	filter
21	0.029.1155.2/20	1	11710 <- plate -> 11711
22	2.1470.002.2	2	lock washer 6
23	2.0112.004.2	2	screw m 6 p.1 x 14
24	0.022.1151.0	1	bracket
25	2.1470.006.2	1	lock washer 10
26	2.0112.309.2	1	screw m 10 p.1.5 x 25
27	0.027.1157.0/10	1	old part number

Section: ENGINE
CRANKCASE

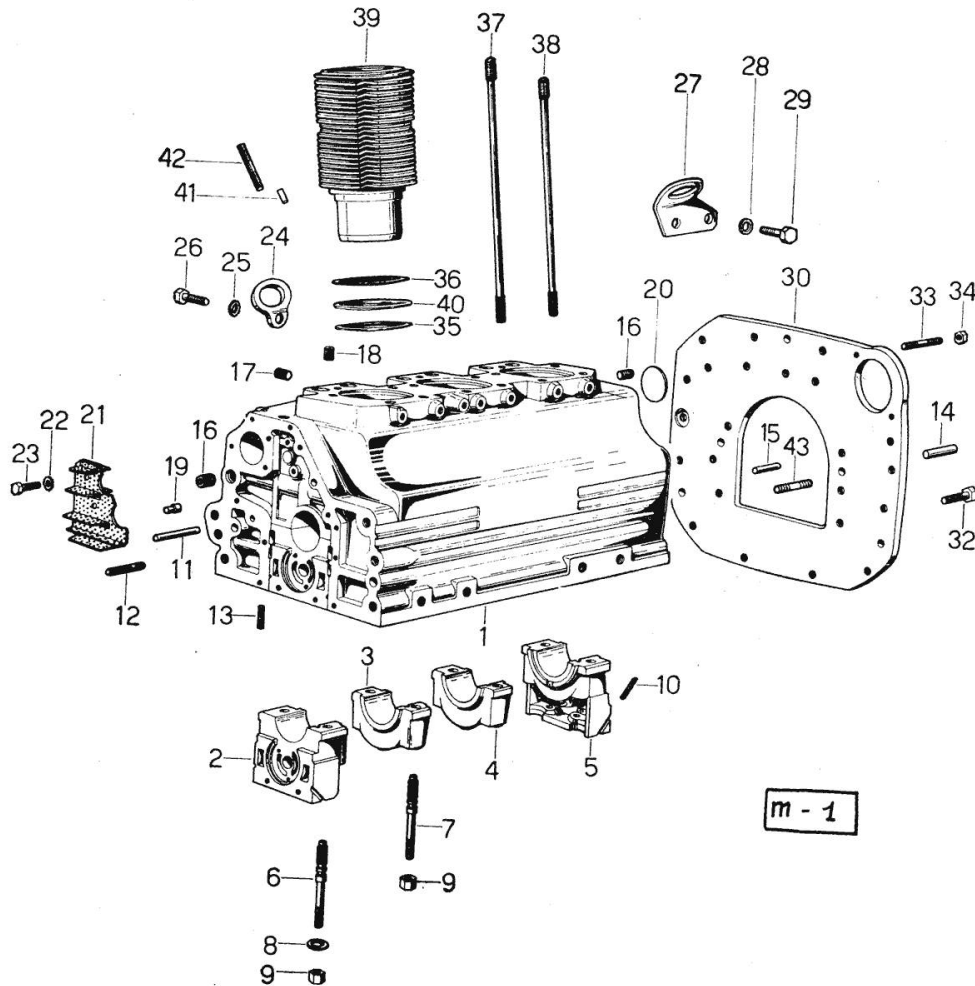


Fig.	P/n	QTY	Name
28	2.1470.006.2	1	lock washer 10
29	2.0112.309.2	1	screw m 10 p.1.5 x 25
30	0.029.1130.0/20	1	flange
			ORDER ALSO: 2x STUD BOLT 2.0432.257.1 2x WASHER 2.1470.007.2 2x NUT 2.1011.322.2
32	2.0112.511.1	11	screw m 14 p.2 x 30
33	2.0432.257.1	2	stud bolt m 12 p.1.75 - 1.25 x 30
33	2.0439.033.1	2	stud bolt m 10x28
34	2.1011.106.2	2	nut m 10 p.1.5
35	2.1589.034.0	3	shoulder ring 9800 <-
35	2.1589.036.0	3	shim -> 9801
36	2.1589.033.0	3	shoulder ring 9800 <-
36	2.1589.037.0	3	shim -> 9801
37	0.029.1123.0	12	stud bolt m 12 p.1.5x265 14021 <-
37	0.039.1122.0	12	stud bolt m 12 p.1.5x310 -> 14022
38	0.029.1122.0	3	stud bolt 9800 <-
38	0.034.1122.0	3	stud bolt -> 9921 - 11898 <-
38	0.037.1122.0	3	stud bolt -> 9801 - 9920 <- E -> 11899
39	0.029.1120.0/10	3	- 9800 <-
39	0.039.1120.0/10	3	engine cylinder -> 9801 - 11710 <- ORDER ALSO: 2x PUSHROD TUBE 034.1332.6
40	2.1569.053.0	3	gasket 9800 <-
40	2.1569.055.0	3	shim -> 9801
41	2.1653.708.0	1	pin 8x18
42	2.0432.267.1	2	stud bolt m 12 p.1.75-1.25x60
43	2.0432.153.1	2	stud bolt m 10 p.1.5 / p.1.25 x 20

Section: ENGINE
TIMING CASE 9800 <-

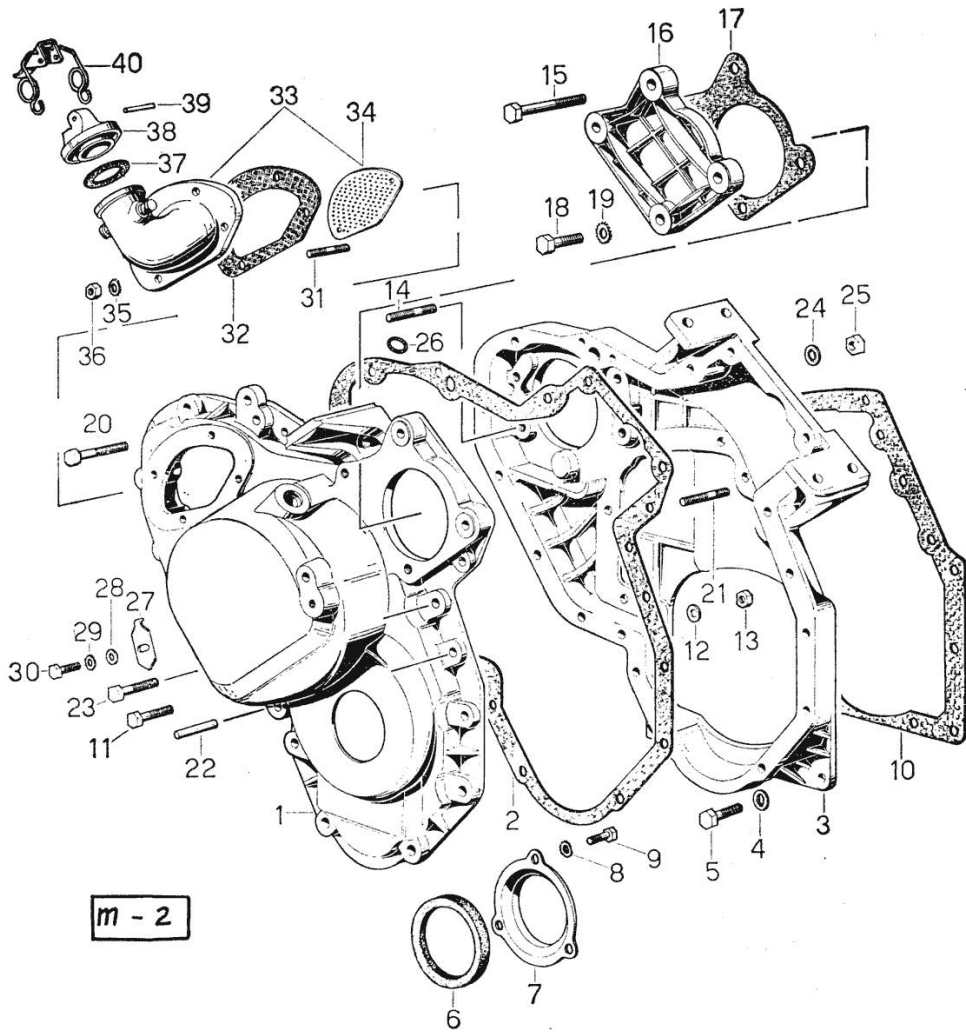


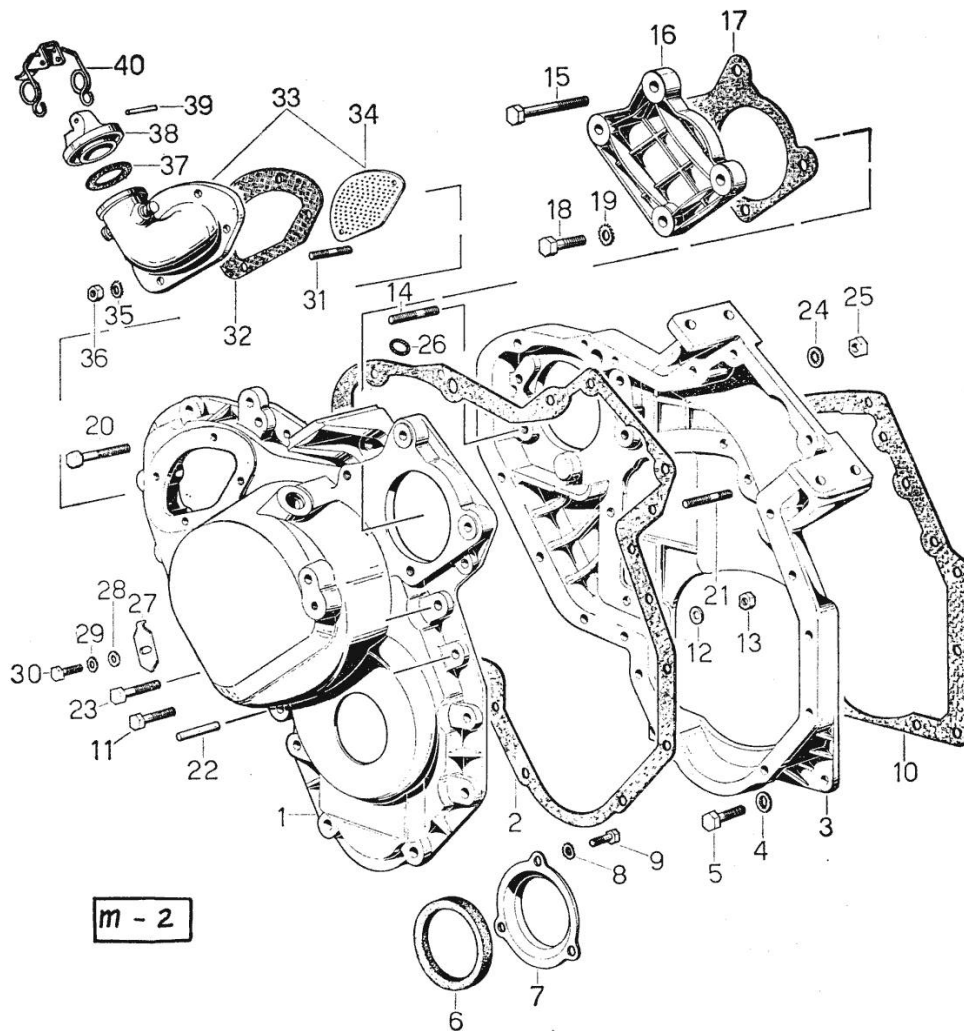
Fig.	P/n	QTY	Name
------	-----	-----	------

Notes:
[MINTAURO 50 60]

1	0.029.1132.0	1	guard 1472 <- ORDER ALSO: 1x SCREW 2.0122.229.1 1x COVER 0.029.1163.0 1x SEAL 0.054.1155.0 2x SCREW 2.0112.211.2 2x WASHER 2.1470.004.2 1x LEVER 0.029.1621.3
2	0.029.1152.0	1	gasket
3	0.029.1131.0	1	old part number
4	2.1480.014.1	8	washer 8
5	2.0112.207.2	8	screw m 8 p 1.25 x 20
6	2.1519.010.0	1	special oil seal 58x80x10
7	0.001.2241.0	1	plate
8	2.1470.002.2	3	lock washer 6
9	2.0112.001.1	3	screw m 6 p.1 x 8
10	0.029.1153.0	1	gasket
11	2.0112.213.2	4	screw m 8 p.1.25 x 35
12	2.1480.014.1	16	washer 8
13	2.1011.405.2	16	nut m 8 p.1
14	2.0432.159.1	4	stud bolt m 10 x 35
15	2.0122.229.1	1	screw m 8 x 100
16	0.029.1163.0	1	small cover
17	0.054.1155.0	1	gasket
18	2.0112.211.2	2	screw m 8 p.1.25 x 30
19	2.1470.004.2	2	lock washer 8
20	2.0122.225.2	1	screw m 8 p.1x80
21	2.0432.005.1	2	stud bolt m 8 p.1.25 / p.1 x 25
22	2.1653.711.0	1	pin
23	2.0122.215.2	2	screw
24	2.1480.014.1	1	washer 8
25	2.1011.405.2	1	nut m 8 p.1
26	2.1530.028.0	1	oil seal 11.91 x 2.62
27	0.002.2770.0	1	old part number
28	2.1310.003.2	1	flat washer 7.4x14
29	2.1470.004.2	1	lock washer 8
30	2.0112.103.1	1	screw m 7 p.1.x12
30	2.0112.204.2	1	screw m 8 p.1.25x14
31	2.0432.001.1	4	stud bolt m 14 p.2-1.5x35
32	0.029.1151.0	1	gasket
33	0.029.1134.4	1	old part number
34	0.029.1136.0	1	old part number
35	2.1480.014.1	4	washer 8
36	2.1011.405.2	4	nut m 8 p.1

TIMING CASE 9800 <-

Fig.	P/n	QTY	Name
37	0.001.6692.0	1	gasket
38	0.002.8941.0	1	plug
39	2.1699.004.0	1	pin
40	0.002.9745.3	1	old part number



Section: ENGINE
TIMING CASE -> 9801

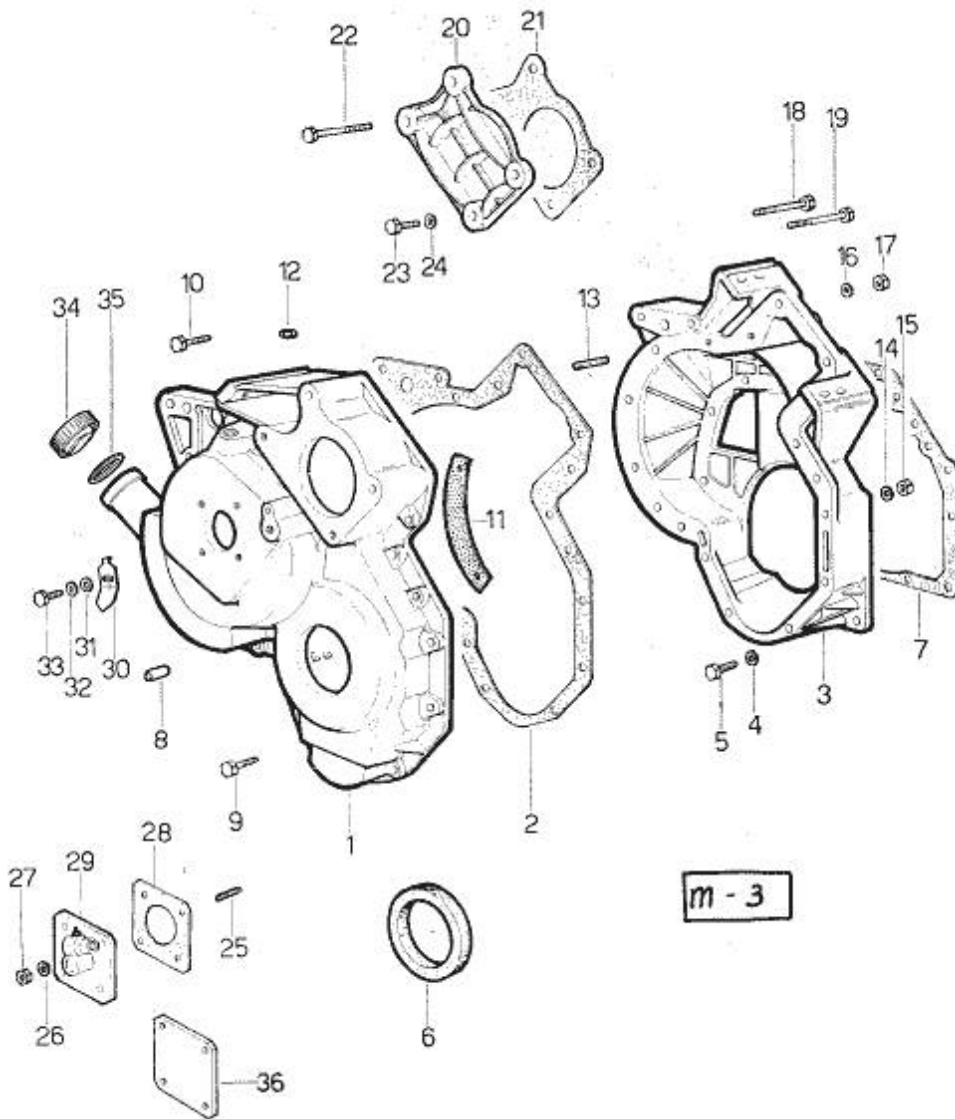


Fig.	P/n	QTY	Name
Notes: [MINTAURO 50 60]			
1	0.027.1155.0/30	1	governor housing
2	0.027.1156.0	1	gasket
3	0.027.1154.0/30	1	flange
4	2.1480.014.1	8	washer 8
5	2.0112.207.2	8	screw m 8 p 1.25 x 20
6	2.1519.010.0	1	special oil seal 58x80x10
7	0.029.1153.0	1	gasket 11710 <-
7	0.029.1153.0/10	1	gasket -> 11711
8	2.1653.711.0	1	pin
9	2.0122.213.2	4	screw m 8 p.1x35
10	2.0122.222.2	1	screw
11	0.027.1152.0/20	1	small plate
12	2.1530.028.0	1	oil seal 11.91 x 2.62
13	2.0439.060.2	3	stud bolt m 8 p.1.25-1x22
14	2.1480.014.1	15	washer 8
15	2.1011.405.2	15	nut m 8 p.1
16	2.1480.014.1	2	washer 8
17	2.1011.405.2	3	nut m 8 p.1
18	2.0122.225.2	1	screw m 8 p.1x80
19	2.0122.225.2	1	screw m 8 p.1x80
20	0.029.1163.0	1	small cover
21	0.054.1155.0	1	gasket
22	2.0122.229.1	2	screw m 8 x 100
23	2.0122.211.2	2	screw m 8 p.1x30
24	2.1480.014.1	2	washer 8
25	2.0439.055.1	4	stud bolt m 6 p.1 x 18
26	2.1480.012.1	4	washer 6, d128
27	2.1011.103.2	4	nut m 6 p.1
28	0.026.1150.0	1	gasket
29	2.7049.210.0/20	1	transmission
30	0.038.1150.0	1	index
31	2.1310.003.2	1	flat washer 7.4x14
32	2.1470.004.2	1	lock washer 8
33	2.0112.103.1	1	screw m 7 p.1.x12
34	0.022.1135.3	1	plug
35	2.1569.048.0	1	gasket
36	0.027.1153.0	1	flange

Section: ENGINE
CRANKSHAFT

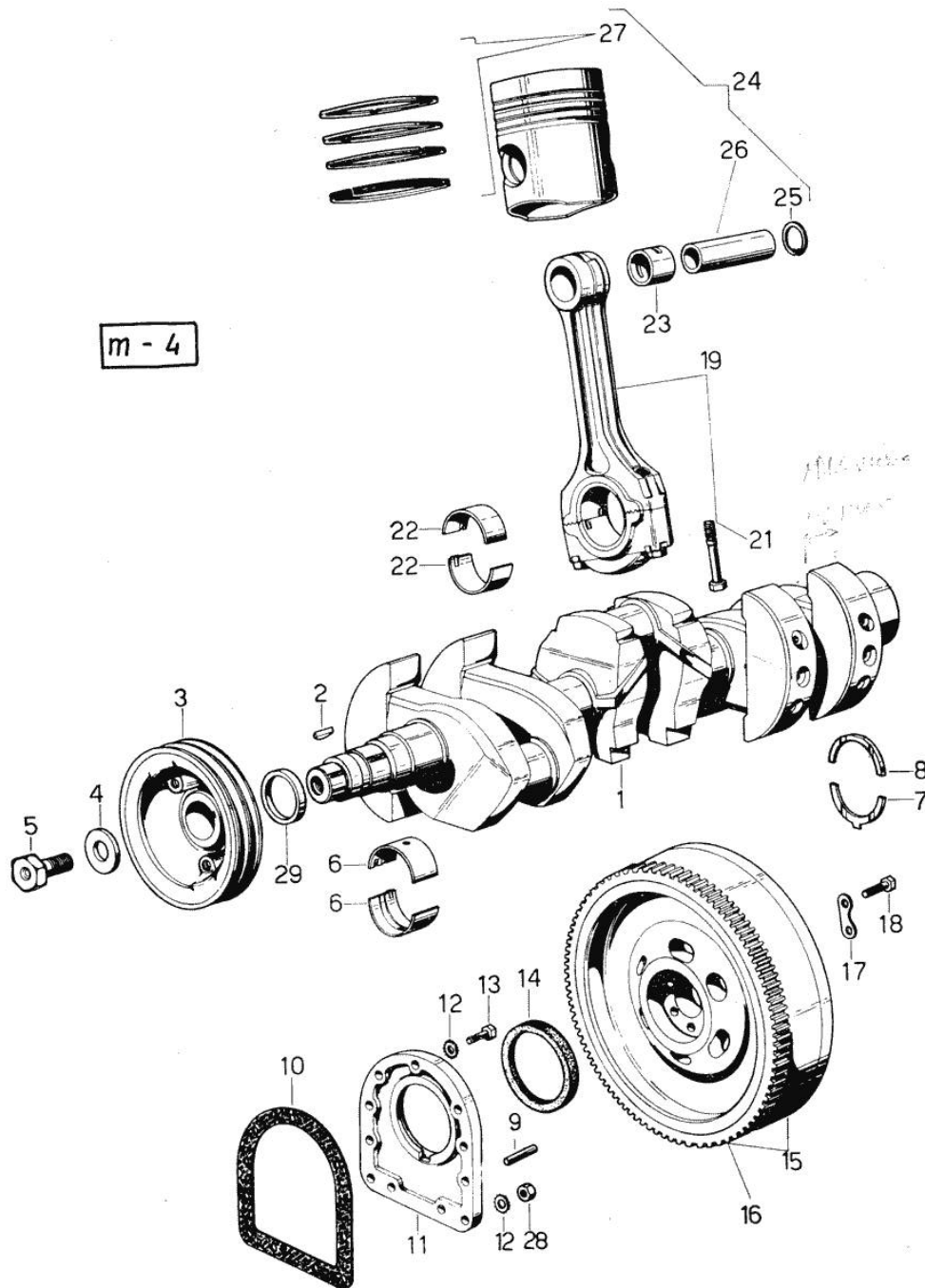


Fig.	P/n	QTY	Name
------	-----	-----	------

Notes:
[MINTAURO 50 60]

1	0.029.1210.4/30	1	crankshaft -> 15572
1	0.029.1210.6	1	crankshaft 15571 <-
2	2.1799.002.0	1	stick 10x13
3	0.029.1244.0/10	1	pulley 9800 <-
3	0.038.1244.0	1	pulley -> 9801
4	0.001.6020.0	1	shoulder
5	0.001.6019.0	1	old part number 9800 <-
5	2.0129.032.2	1	screw m 24 p.2x45 -> 9801
6	0.029.0066.0	8	main half bushing - mm 1.00
6	0.029.1215.0/10	8	main half bushing
6	0.029.1215.7	8	main half bushing - mm 0.25
6	0.029.1215.8	8	main half bushing - mm 0.50
6	0.029.1215.9	8	main half bushing - mm 0.75
7	0.001.4547.0	2	shoulder ring + mm 0.05
7	0.001.4548.0	2	shoulder ring + mm 0.10
7	0.001.4549.0	2	shoulder ring + mm 0.15
7	0.042.1219.0	2	shoulder ring STANDARD
8	0.001.4544.0	2	shoulder ring + mm 0.05
8	0.001.4545.0	2	shoulder ring + mm 0.10
8	0.001.4546.0	2	shoulder ring + mm 0.15
8	0.042.1218.0	2	shoulder ring STANDARD
9	2.1652.915.0	2	cylindrical plug 12x35
10	0.029.1250.0	1	gasket
11	0.029.1240.0	1	flange
12	2.1480.015.1	9	washer 10
13	2.0112.309.2	9	screw m 10 p.1.5 x 25
14	2.1519.009.0	1	special oil seal
15	0.029.1241.3	1	old part number
16	0.029.1242.0	1	crown wheel Z = 120, mm 20
16	0.038.1242.0	1	crown wheel Z = 120, mm 15
17	2.1379.006.0	3	lock-tab 15x15x36,5
18	2.0122.515.7	6	screw
19	0.029.1220.3	3	engine connecting rod 15571 <-
19	0.039.1220.3/20	3	engine connecting rod

Section: ENGINE
CRANKSHAFT

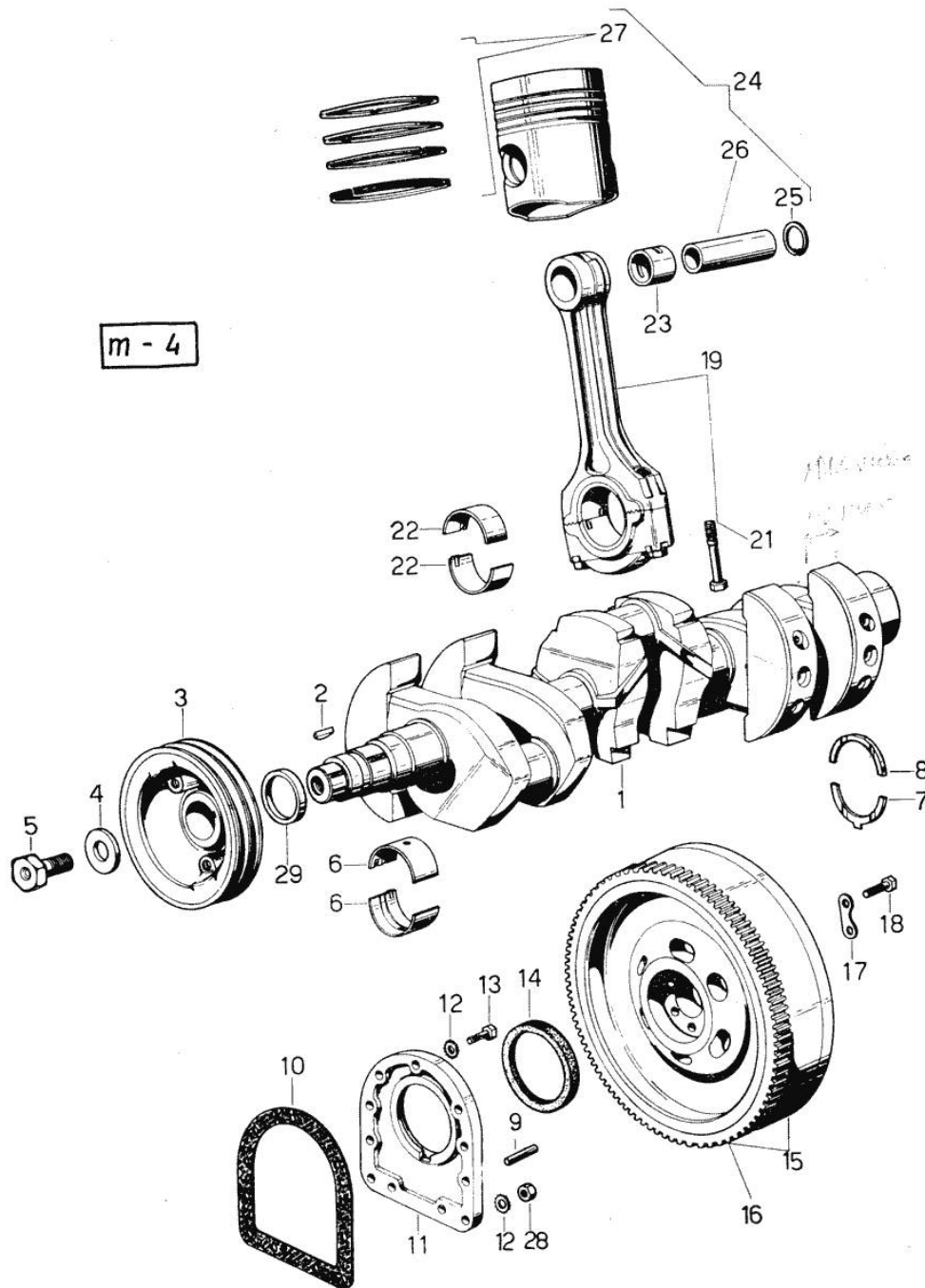


Fig.	P/n	QTY	Name
			-> 15572
21	0.002.3910.0	6	screw 15571 <-
21	0.039.1250.0	6	screw m 14 p.1.5x63 -> 15572
22	0.021.0068.0	6	con.rod half bushing
22	0.021.1225.0	6	con.rod half bushing STANDARD 15571 <-
22	0.021.1225.7	6	con.rod half bushing - mm 0.25
22	0.021.1225.8	6	con.rod half bushing - mm 0.50
22	0.021.1225.9	6	con.rod half bushing - mm 0.75
22	0.039.0068.0	6	con.rod half bushing - mm 1.016
22	0.039.1225.0	6	con.rod half bushing -> 15572
22	0.039.1225.7	6	con.rod half bushing -mm 0.254
22	0.039.1225.8	6	con.rod half bushing -mm 0.508
22	0.039.1225.9	6	con.rod half bushing -mm 0.762
23	0.002.4168.0	3	bearing
24	0.029.0060.6	3	complete piston STANDARD 9800 <-
24	0.029.0061.6	3	complete piston + mm 0.5
24	0.029.0062.6	3	complete piston + mm 1.0
24	0.038.0060.6/10	3	complete piston STANDARD -> 9801
24	0.038.0061.6/10	3	complete piston + mm 0.50
24	0.038.0062.6/10	3	complete piston + mm 1.0
25	2.1411.014.1	6	circlip 35
26	0.002.4167.0	3	piston pin 9800 <-
26	0.038.1236.0	3	piston pin -> 9801
27	0.029.0052.6	3	piston ring set 9800 <-
27	0.029.0053.6	3	piston ring set + mm 0.5
27	0.029.0054.6	3	piston ring set + mm 1.0
27	0.054.0052.6	3	piston ring set -> 9801
27	0.054.0053.6	3	piston ring set + mm 0.5
27	0.054.0054.6	3	piston ring set + mm 1.0
28	2.1011.421.2	2	nut m 10 p.1.25
29	0.034.1256.0	1	spacer -> 16437

Section: ENGINE
CAMSHAFT 9800 <-

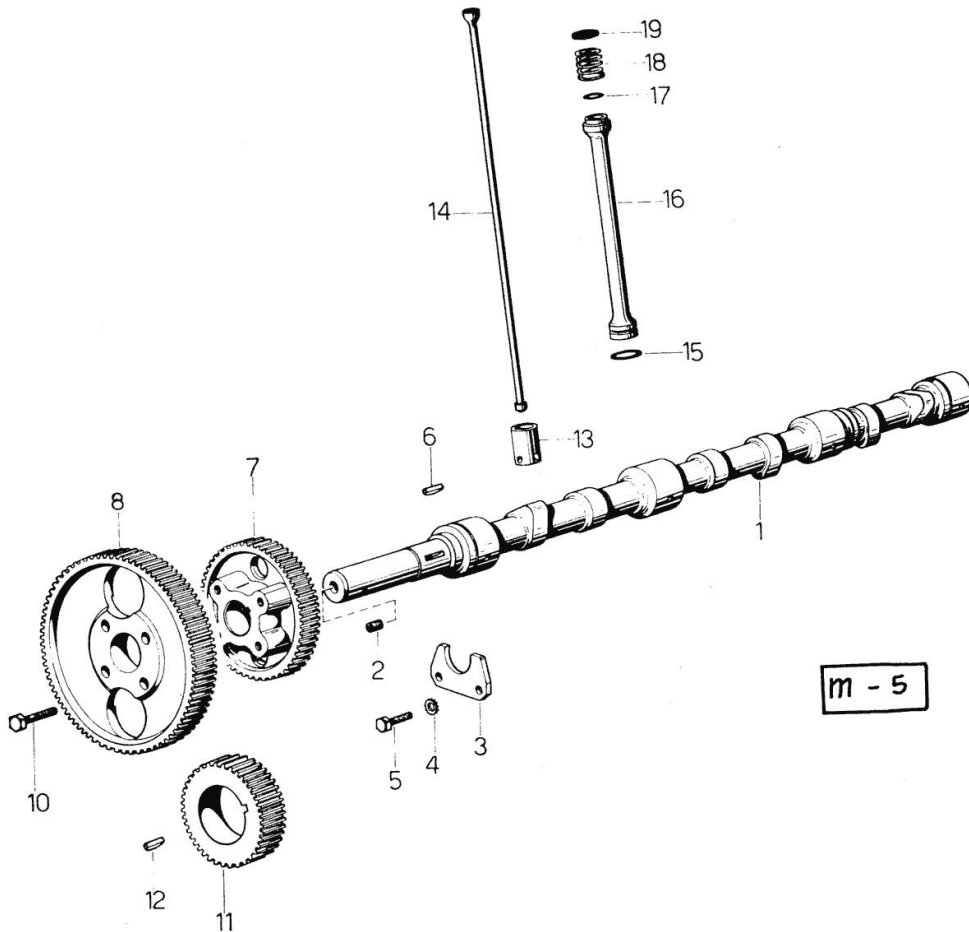


Fig.	P/n	QTY	Name
------	-----	-----	------

Notes:
 [MINITAURO 50 60]

1	0.029.1310.0/20	1	camshaft -> 321
1	0.029.1310.6	1	camshaft 320 <-
2	2.0512.203.1	1	screw
3	0.002.4228.0	1	shoulder
4	2.1470.004.2	2	lock washer 8
5	2.0312.208.1	2	screw m 8 p.1.25 x 25
6	2.1720.010.0	1	key 5x9
7	0.029.1323.0	1	gear
8	0.029.1321.0/20	1	gear 320 <- ORDER ALSO: 1x CAMSHAFT 0.029.1310.0/20
10	2.0139.006.1	4	screw
11	0.029.1320.0	1	gear Z = 45
12	2.1720.010.0	1	key 5x9
13	0.002.3909.0	6	tappets
14	0.002.4180.0	6	rod
15	2.1539.018.0	6	special oil seal
16	0.029.1332.0	6	sleeve
17	2.1530.029.0	6	oil seal 12.37x2.62
18	2.4019.090.1	6	spring 25x34x2.5
19	2.1569.037.0	6	gasket

Section: ENGINE

CAMSHAFT -> 9801

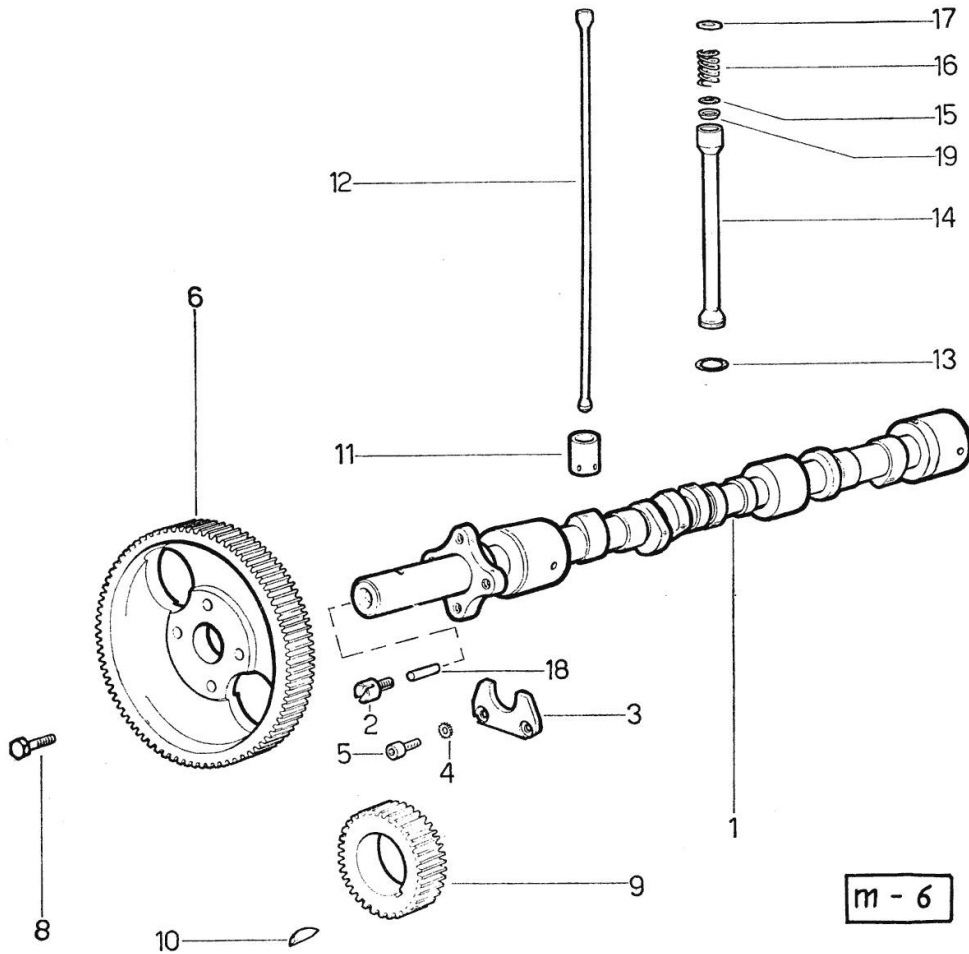


Fig.	P/n	QTY	Name
------	-----	-----	------

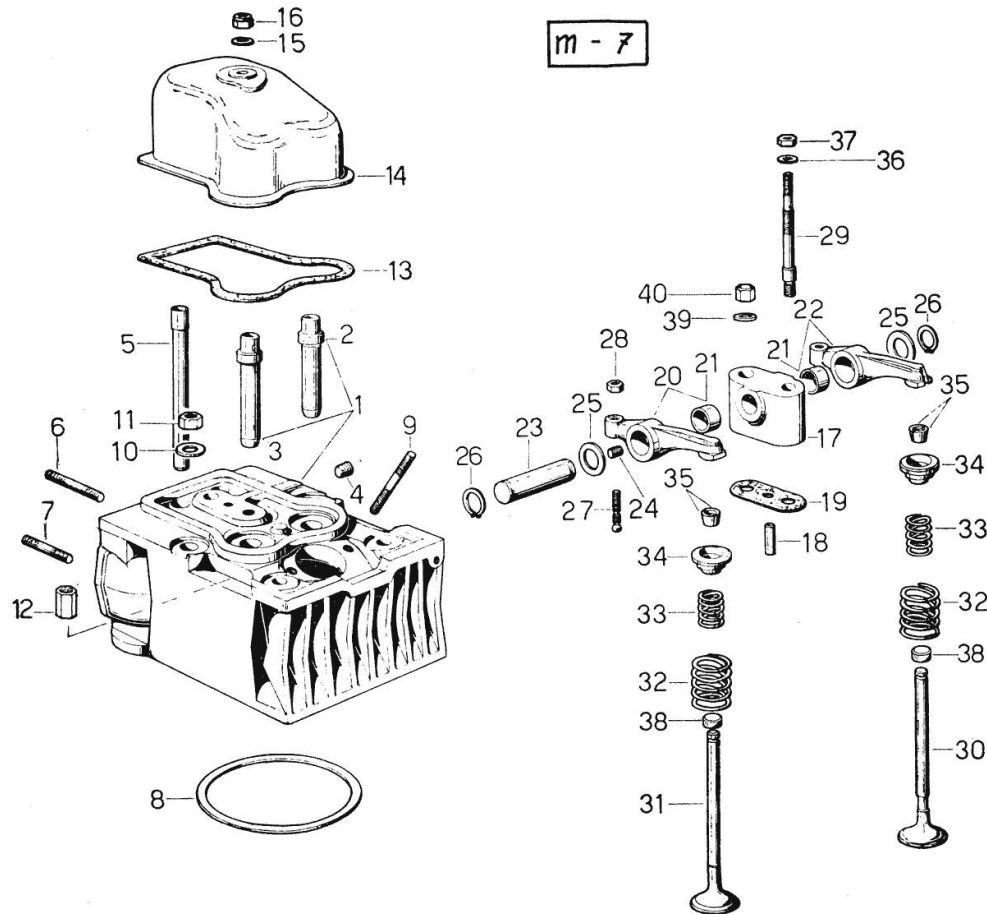
Notes:
[MINTAURO 50 60]

1	0.035.1310.0/10	1	camshaft
2	0.027.1350.0/20	1	pin
3	0.027.1314.0	1	flange
4	2.1470.004.2	2	lock washer 8
5	2.0312.206.2	2	screw m 8 p 1.25 x 20
6	0.035.1321.0	1	gear
8	2.0139.006.1	4	screw
9	0.029.1320.0	1	gear Z = 45
10	2.1720.010.0	1	key 5x9
11	0.002.3909.0	6	tappets
12	0.002.4180.0	6	rod
12	0.037.1331.0	6	rod -> 9921 - 11898 <- 9920 <- E -> 11899
13	2.1539.018.0	6	special oil seal
14	0.034.1332.6	6	sleeve 11710 <- -> 11711
14	0.039.1332.0/10	6	sleeve -> 11711
15	2.1539.022.0	6	special oil seal 12.37x2.62
16	2.4019.090.1	6	spring 25x34x2.5 11710 <- -> 11711
16	2.4019.149.1	6	spring 14x29x2 -> 11711
17	2.1569.037.0	6	gasket
18	2.1650.513.0	1	pin 6 x 30
19	0.039.1350.0	6	ring 24697 <-

Section: ENGINE
CYLINDER HEAD 9800 <

Fig.	P/n	QTY	Name
------	-----	-----	------

Notes:
[MINTAURO 50 60]



0	0.029.0057.6	1	gasket set - FOR 1 CYLINDER VALVE GRINDING AND PISTON RINGS REPLACEMENT
1	0.029.1410.3	3	engine head
2	0.029.1417.0	3	valve guide
3	0.037.1417.0/10	3	valve guide
4	2.3130.001.1	3	plug 1/8" gas
5	0.029.1418.0	6	sleeve
6	2.0432.007.1	3	stud bolt m 8 p.1.25 / p.1 x 30
6	2.0432.022.1	1	stud bolt m 8 p 1.25-1x85
6	2.0432.026.1	2	stud bolt m 8 p.1.25 - 1.00 x 110
7	2.0432.003.1	6	stud bolt m 8 p.1.25 / p.1 x 20
8	2.1589.035.0	3	shoulder ring
9	2.0432.011.1	6	stud bolt m 8 p.1.25 / p.1 x 40
10	2.1599.144.0	12	shoulder
11	2.1019.025.1	10	special nut
12	2.1019.037.1	2	nut m 12 p.1.5x35
13	0.029.1450.0	3	gasket
14	0.029.1440.2	3	cap
15	2.1560.004.0	3	copper gasket 8.2 x 14
16	2.1099.056.1	3	special nut m8 p.1
17	0.029.1430.0	3	old part number
18	0.029.1452.0	3	tube
19	0.029.1451.0/10	3	gasket
20	0.002.5937.3/30	3	rocker arm
21	2.1559.021.0/40	6	bushing 15x19x22
22	0.002.5936.3/40	3	rocker arm
23	0.029.1431.0	3	pin
24	2.0512.102.1	3	screw m 6 p.1 x 8
25	2.1599.019.0	6	shoulder ring 19.5x31x2
26	2.1410.055.1	6	circlip 19
27	0.021.1434.0	6	screw
28	2.1011.405.2	6	nut m 8 p.1
29	0.029.1453.0/10	3	stud bolt
30	0.029.1421.0/10	3	exhaust valve Ø mm 9 4401 <- ORDER ALSO: 6x PROTECTION 0.021.1453.0/20
31	0.029.1420.0/10	3	inlet valve Ø mm 9 4401 <- ORDER ALSO: 6x PROTECTION 0.021.1453.0/20
32	2.4019.193.0	6	spring 36.15x55.2x3.2

Section: ENGINE
CYLINDER HEAD 9800 <

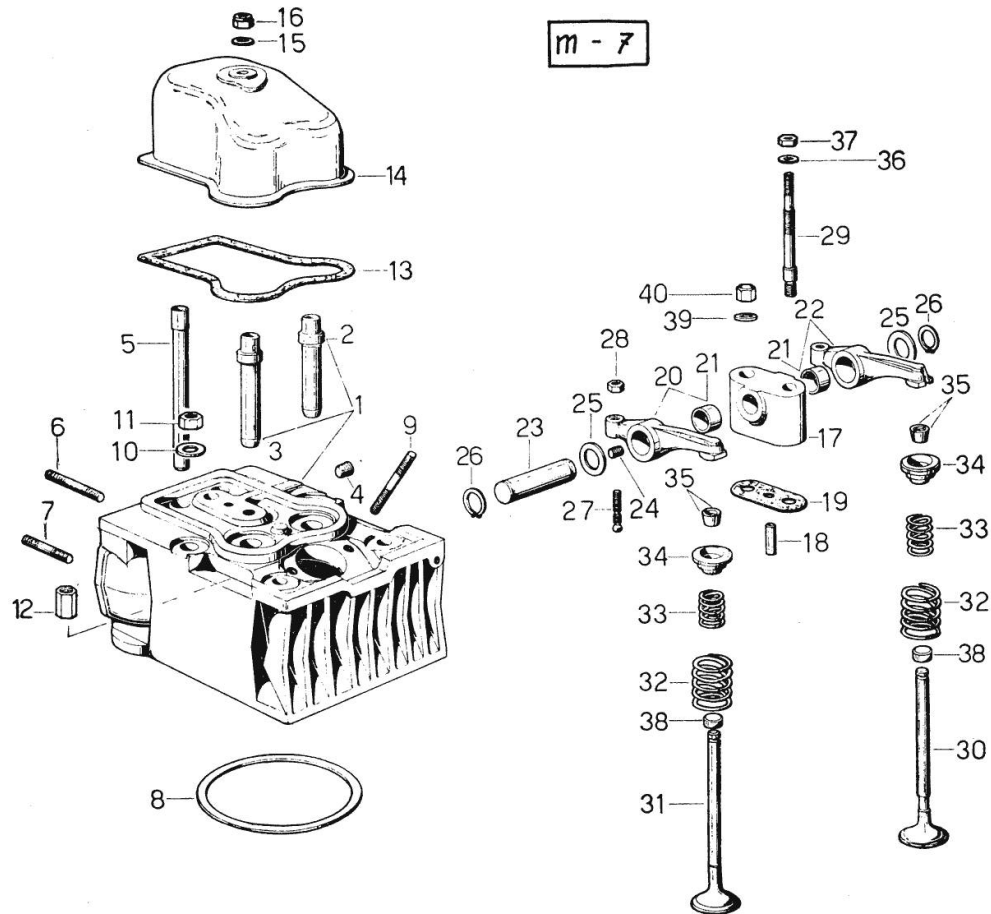


Fig.	P/n	QTY	Name
33	2.4019.194.0	6	spring 22.70x50.7x2.1
34	0.002.9215.0	6	cup
35	0.002.9193.0	12	conical valve cotter
36	2.1310.006.2	3	flat washer 10.5x21
37	2.1011.421.2	3	nut m 10 p.1.25
38	0.021.1453.0/20	6	small cover
39	2.1599.160.0	3	washer 10.5x19x4
40	2.1099.035.1	3	special nut

Thank you so much for reading.
Please click the “Buy Now!”
button below to download the
complete manual.



After you pay.

You can download the most
perfect and complete manual in
the world immediately.

Our support email:

ebooklibonline@outlook.com