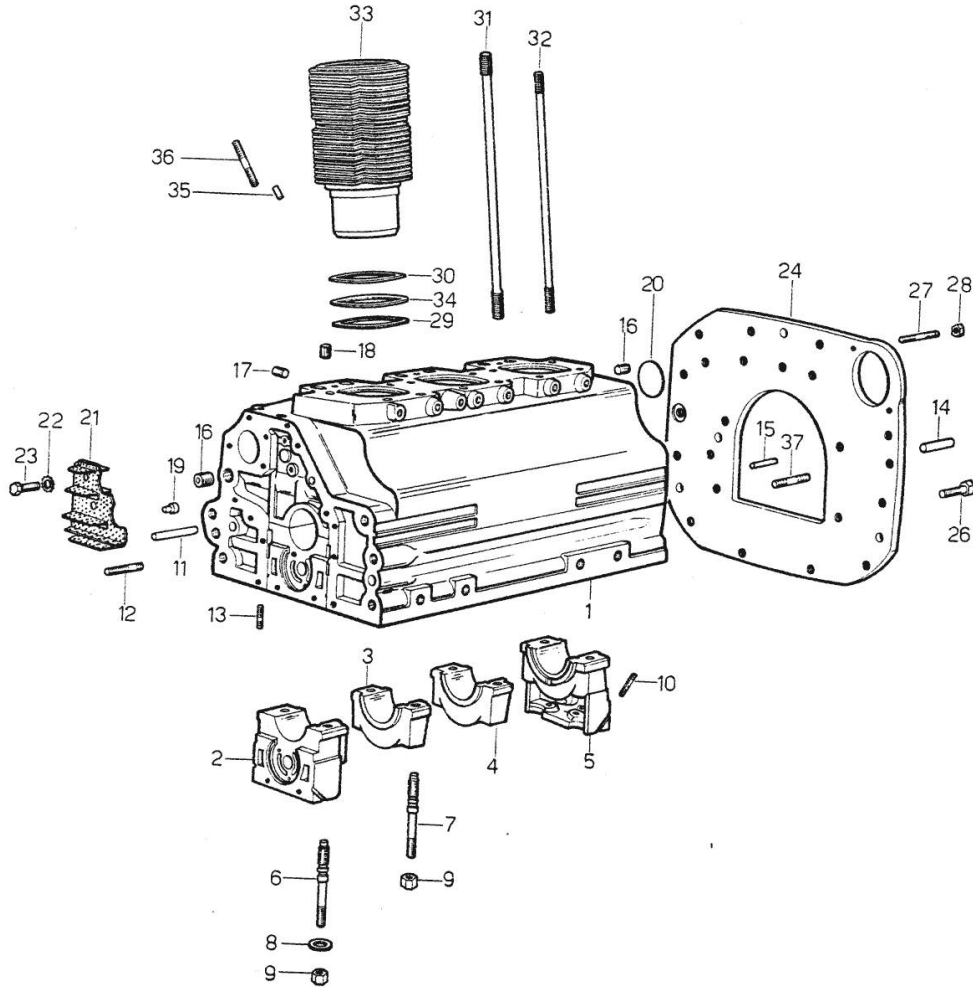


Section: ENGINE
CRANKCASE

Fig.	P/n	QTY	Name
------	-----	-----	------

Notes:
[MINITAURO 60 C]



0	0.038.0050.6	1	old part number
1	0.035.1110.4/20	1	FOR INSTALLATION OF ENGINE - 11710 <- old part number 11710 <- ORDER AT SAME TIME - 1x FLANGE 027.1154.0/30 - 1x PLATE 029.1155.2/10 - 1x GASKET 029.1153.0/10 - 1x FLANGE 029.130.0/10#
2	0.029.1112.0	1	support
3	0.029.1113.0	1	support
4	0.029.1113.0	1	support
5	0.029.1113.0	1	support
6	0.021.1157.0	4	stud bolt
7	0.029.1117.0	4	stud bolt
8	2.1599.144.0	8	shoulder
9	2.1019.026.1	8	special nut m 12 p.1.5
10	0.029.1154.0	4	gasket
11	2.1699.116.0	1	pin
12	2.0432.018.1	6	stud bolt m 8 p.1.25 / p.1 x 65
13	2.0432.003.1	24	stud bolt m 8 p.1.25 / p.1 x 20
14	2.1652.911.0	2	cylindrical plug 12x25
15	2.1653.708.0	2	pin 8x18
16	2.3130.002.1	2	plug 1/4" gas
17	2.3139.001.0	3	plug m 12 p.1.75
18	2.3130.001.1	3	plug 1/8" gas
19	2.1699.021.0	1	pin 7.8x8x20
20	2.3170.022.1	1	expansion plug 60
21	0.029.1155.2	1	filter 11710 <- > 11711
22	2.1470.002.2	2	lock washer 6
23	2.0112.003.2	2	screw m 6 p.1 x 12
24	0.029.1130.0/10	1	flange
25	2.1470.008.2	11	lock washer 14
26	2.0112.511.1	11	screw m 14 p.2 x 30
27	2.0439.033.1	2	stud bolt m 10x28
28	2.1011.106.2	2	nut m 10 p.1.5
29	2.1589.036.0	3	shim
30	2.1589.037.0	5	shim
31	0.029.1123.0	12	stud bolt m 12 p.1.5x265 14021 <-
32	0.034.1122.0	3	stud bolt

Section: ENGINE
CRANKCASE

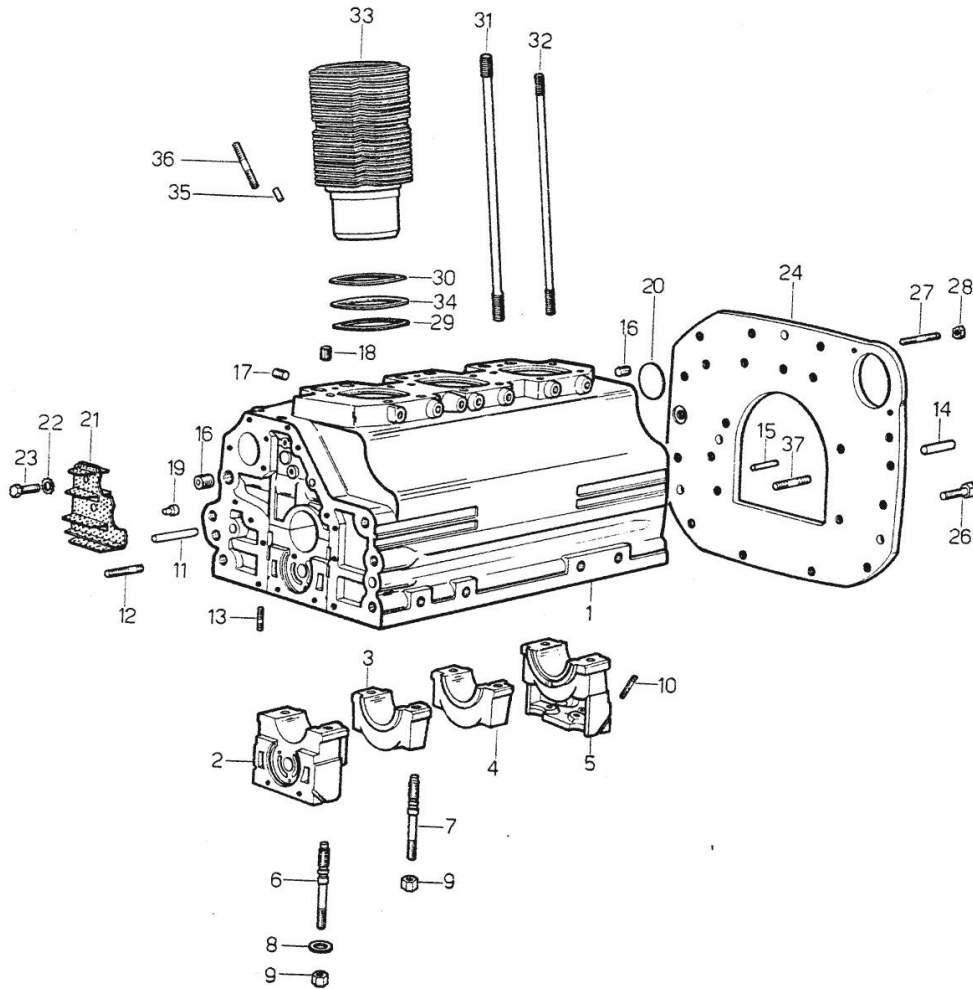


Fig.	P/n	QTY	Name
32	0.037.1122.0	3	11898 <- stud bolt 9920 <- E -> 11899
33	0.039.1120.0	3	old part number 11710 <- ORDER ALSO: 2x PUSHROD TUBE 034.1339.6#
34	2.1539.055.0	3	oil seal
35	2.1653.708.0	1	pin 8x18
36	2.0432.267.1	2	stud bolt m 12 p.1.75-1.25x60
37	2.0432.153.1	2	stud bolt m 10 p.1.5 / p.1.25 x 20

Section: ENGINE

TIMING CASE

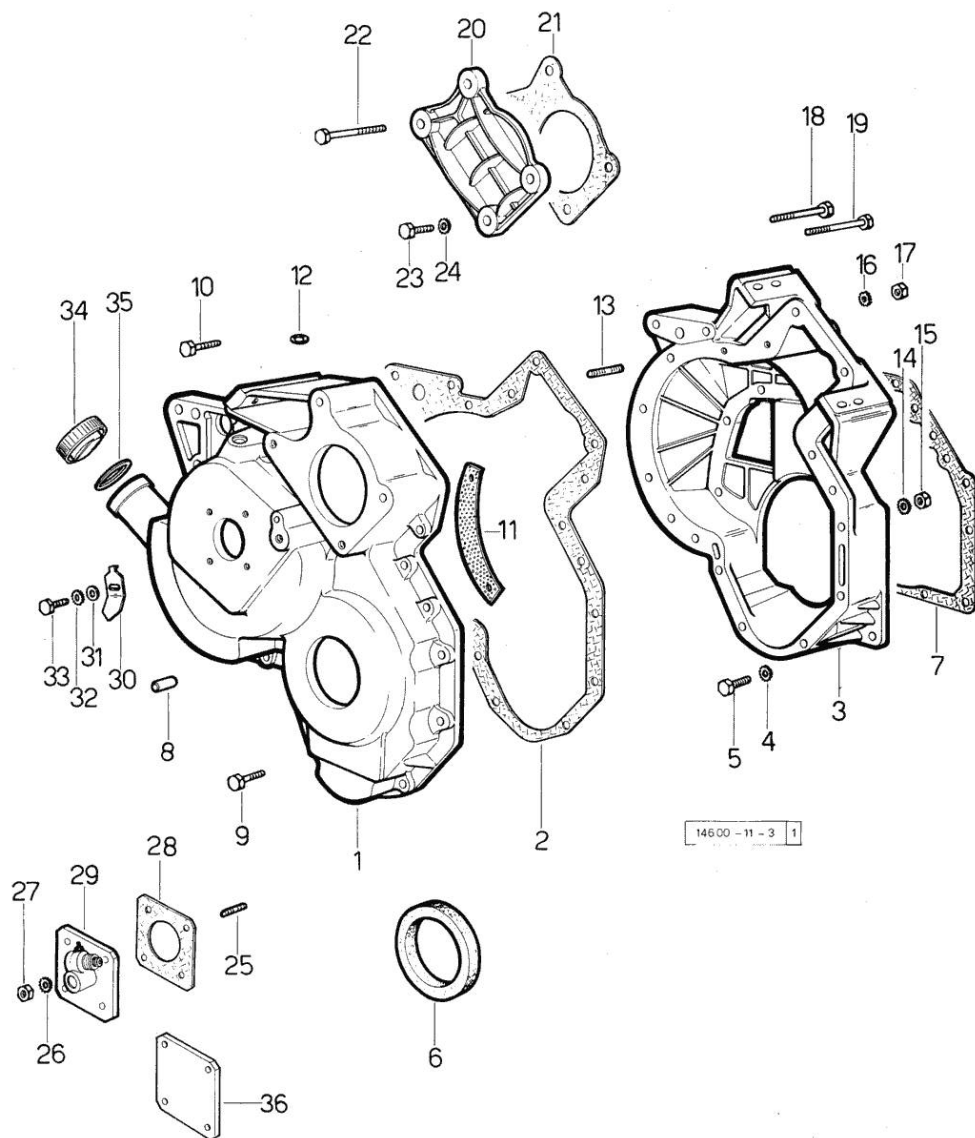


Fig.	P/n	QTY	Name
------	-----	-----	------

Notes:
[MINITAURO 60 C]

1	0.027.1155.0/30	1	governor housing
2	0.027.1156.0	1	gasket
3	0.027.1154.0/30	1	flange
4	2.1480.014.1	8	washer 8
5	2.0112.207.2	8	screw m 8 p 1.25 x 20
6	2.1519.010.0	1	special oil seal 58x80x10
7	0.029.1153.0	1	gasket
7	0.029.1153.0/10	1	gasket
8	2.1653.711.0	1	pin
9	2.0122.213.2	4	screw m 8 p.1x35
10	2.0122.222.2	1	screw
11	0.027.1152.0/20	1	small plate
12	2.1530.028.0	1	oil seal 11.91 x 2.62
13	2.0439.060.2	3	stud bolt m 8 p.1.25-1x22
14	2.1480.014.1	15	washer 8
15	2.1011.405.2	15	nut m 8 p.1
16	2.1480.014.1	2	washer 8
17	2.1011.405.2	3	nut m 8 p.1
18	2.0122.224.1	1	screw
19	2.0152.224.1	1	screw
20	0.029.1163.0	1	small cover
21	0.029.1164.0	1	gasket
22	2.0122.229.1	2	screw m 8 x 100
23	2.0122.211.2	2	screw m 8 p.1x30
24	2.1480.016.1	4	washer 12
25	2.0439.055.1	4	stud bolt m 6 p.1 x 18
26	2.1480.012.1	4	washer 6, d128
27	2.1011.103.2	4	nut m 6 p.1
28	0.026.1150.0	1	gasket
29	2.7049.210.0/20	1	transmission
30	0.038.1150.0	1	index
31	2.1310.003.2	1	flat washer 7.4x14
32	2.1470.003.2	1	lock washer 7
33	2.0112.103.1	1	screw m 7 p.1.x12
34	0.022.1135.3	1	plug
35	2.1539.048.0	1	special oil seal 20.35x1.78
36	2.1569.048.0	1	gasket

Section: ENGINE

CRANKSHAFT

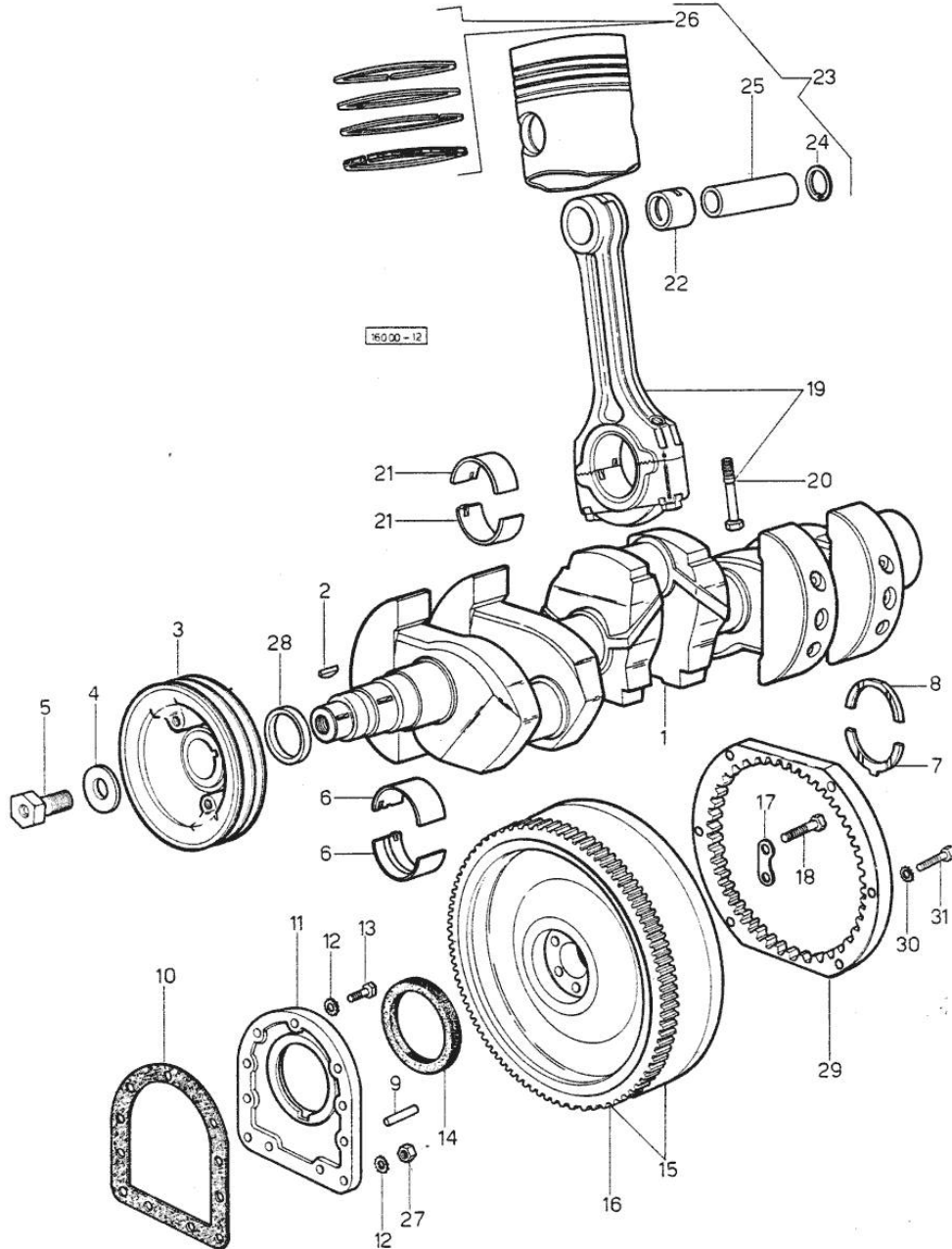


Fig.	P/n	QTY	Name
Notes:			
[MINITAURO 60 C]			
1	0.029.1210.4/30	1	crankshaft => 15572
1	0.029.1210.6	1	crankshaft 15571 <=
2	2.1799.002.0	1	stick 10x13
3	0.038.1244.0	1	pulley
4	0.001.6020.0	1	shoulder
5	2.0129.032.2	1	screw m 24 p.2x45
6	0.029.0066.0	8	main half bushing - mm 1.00
6	0.029.1215.0/10	8	main half bushing
6	0.029.1215.7	8	main half bushing - mm 0.25
6	0.029.1215.8	8	main half bushing - mm 0.50
6	0.029.1215.9	8	main half bushing - mm 0.75
7	0.001.4547.0	2	shoulder ring + mm 0.05
7	0.001.4548.0	2	shoulder ring + mm 0.10
7	0.001.4549.0	2	shoulder ring + mm 0.15
7	0.042.1219.0	2	shoulder ring STANDARD
8	0.001.4544.0	2	shoulder ring + mm 0.05
8	0.001.4545.0	2	shoulder ring + mm 0.10
8	0.001.4546.0	2	shoulder ring + mm 0.15
8	0.042.1218.0	2	shoulder ring STANDARD
9	2.1652.915.0	2	cylindrical plug 12x35
10	0.029.1250.0	1	gasket
11	0.029.1240.0	1	flange
12	2.1480.015.1	9	washer 10
13	2.0112.309.2	9	screw m 10 p.1.5 x 25
14	2.1519.009.0	1	special oil seal
15	0.038.1254.3	1	old part number
16	0.029.1242.0	1	crown wheel Z = 120, mm 20
16	0.038.1242.0	1	crown wheel Z = 120, mm 15
17	2.1379.006.0	3	lock-tab 15x15x36,5
18	2.0122.520.1	6	old part number m 14 p.1.5 x 50
19	0.029.1220.3	3	engine connecting rod 15571 <=
19	0.039.1220.3/20	3	engine connecting rod => 15572
20	0.002.3910.0	6	screw 15571 <=
20	0.039.1250.0	6	screw m 14 p.1.5x63 => 15572
21	0.021.0068.0	6	con.rod half bushing

Section: ENGINE
CRANKSHAFT

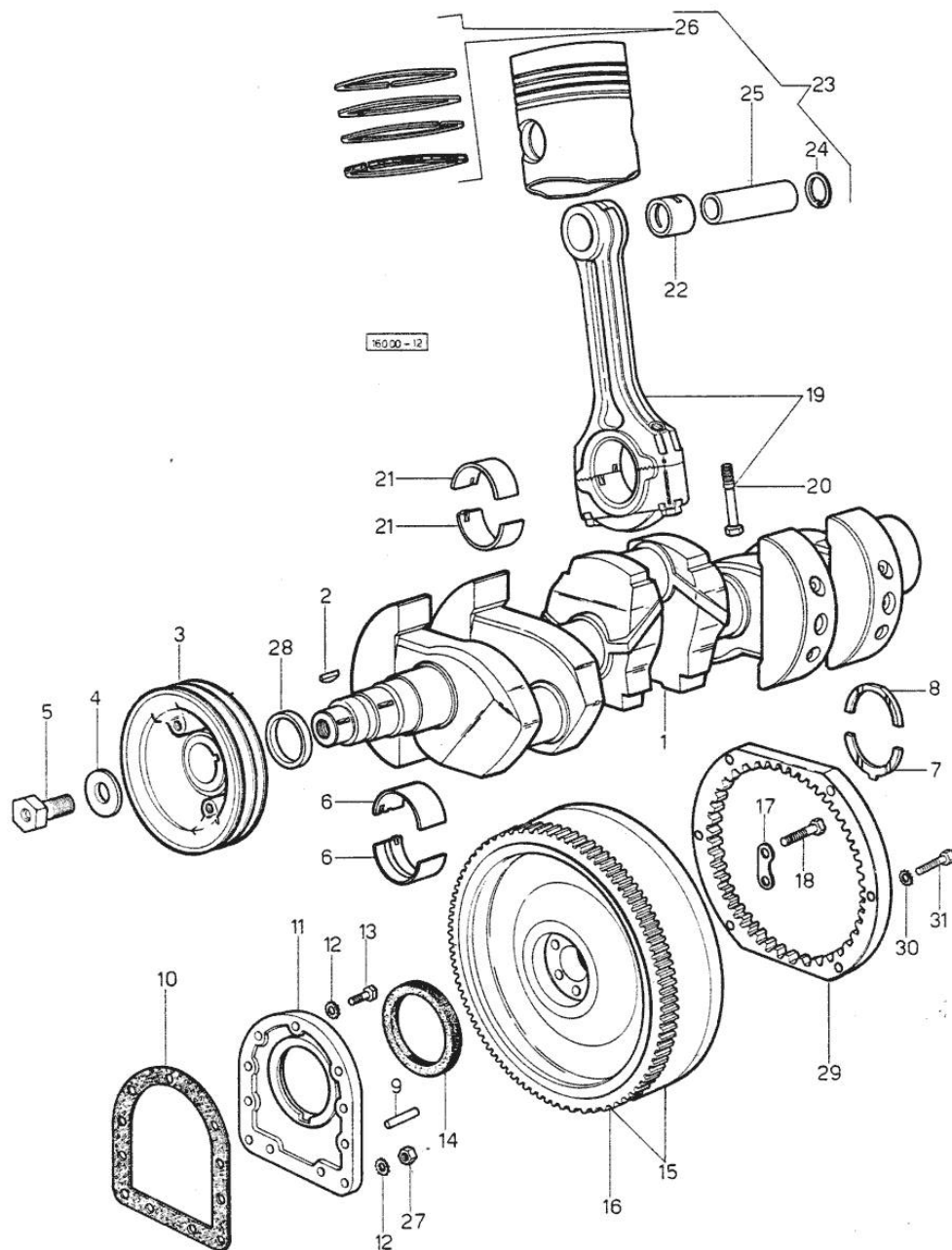


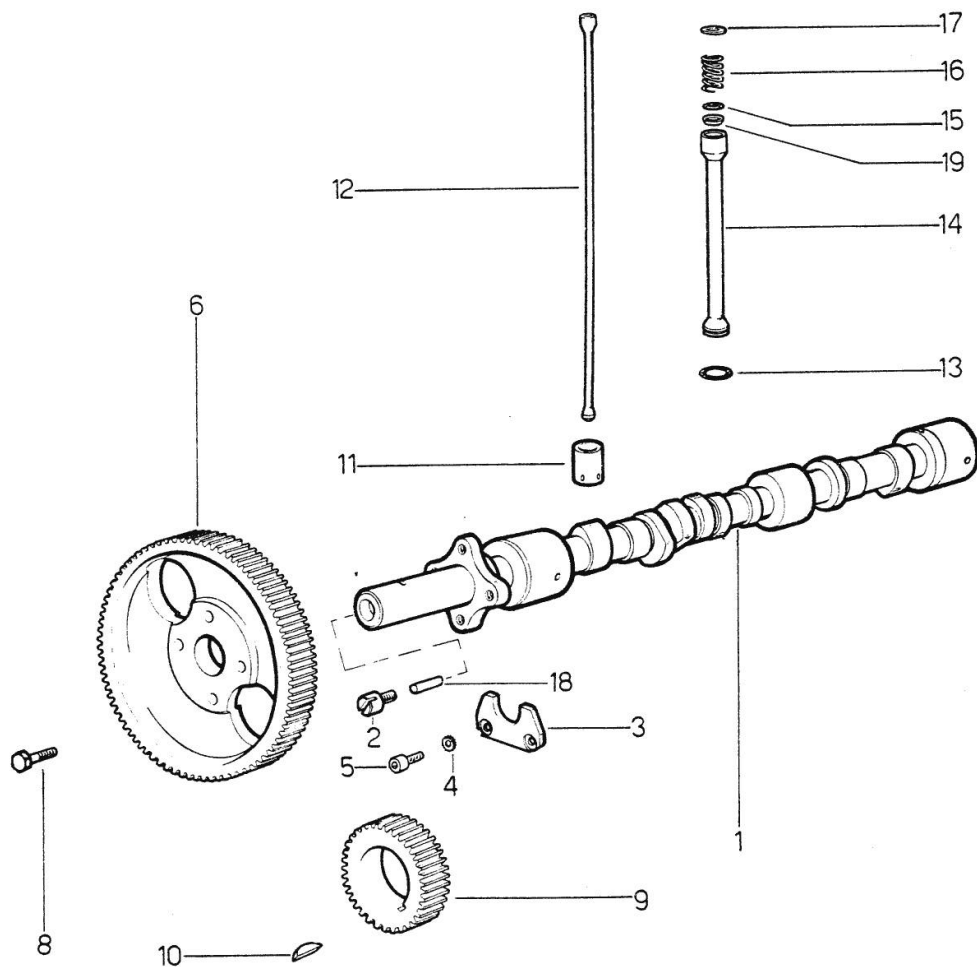
Fig.	P/n	QTY	Name
21	0.021.1225.0	6	con.rod half bushing STANDARD 15571 <=
21	0.021.1225.7	6	con.rod half bushing - mm 0.25
21	0.021.1225.8	6	con.rod half bushing - mm 0.50
21	0.021.1225.9	6	con.rod half bushing - mm 0.75
21	0.039.0068.0	6	con.rod half bushing - mm 1.016
21	0.039.1225.0	6	con.rod half bushing => 15572
21	0.039.1225.7	6	con.rod half bushing -mm 0.254
21	0.039.1225.8	6	con.rod half bushing -mm 0.508
21	0.039.1225.9	6	con.rod half bushing -mm 0.762
22	0.002.4168.0	3	bearing
23	0.038.0060.6	3	complete piston
23	0.038.0061.6	3	complete piston + mm 0.5
23	0.038.0062.6	3	complete piston + mm 1.0
24	2.1411.014.1	6	circlip 35
25	0.038.1236.0	3	piston pin
26	0.038.0054.6	3	piston ring set + mm 1.0
26	0.054.0052.6	3	piston ring set
26	0.054.0053.6	3	piston ring set + mm 0.5
27	2.1011.421.2	2	nut m 10 p.1.25
28	0.034.1256.0	1	spacer => 16437
29	0.038.1255.0	1	crown wheel
30	2.1470.006.2	6	lock washer 10
31	2.0122.317.1	6	screw

Section: ENGINE

CAMSHAFT

Fig.	P/n	QTY	Name
------	-----	-----	------

Notes:
[MINITAURO 60 C]



1	0.035.1310.0/10	1	camshaft
2	0.027.1350.0/20	1	pin
3	0.027.1314.0	1	flange
4	2.1470.004.2	2	lock washer 8
5	2.0312.206.2	2	screw m 8 p 1.25 x 20
6	0.035.1321.0	1	gear
8	2.0139.006.1	4	screw
9	0.029.1320.0	1	gear Z = 45
10	2.1720.010.0	1	key 5x9
11	0.002.3909.0	6	tappets
12	0.002.4180.0	6	rod => 9921 - 11898 <=
12	0.037.1331.0	6	rod 9920 <= - => 11899
13	2.1539.018.0	6	special oil seal
14	0.034.1332.6	6	sleeve 11710 <=
14	0.039.1332.0/10	6	sleeve => 11711
15	2.1539.022.0	6	special oil seal 12.37x2.62
16	2.4019.090.1	6	spring 25x34x2.5 11710 <=
16	2.4019.149.1	6	spring 14x29x2 => 11711
17	2.1569.037.0	6	gasket
18	2.1650.513.0	1	pin 6 x 30
19	0.039.1350.0	6	ring 24697 <=

Section: ENGINE
CYLINDER HEAD

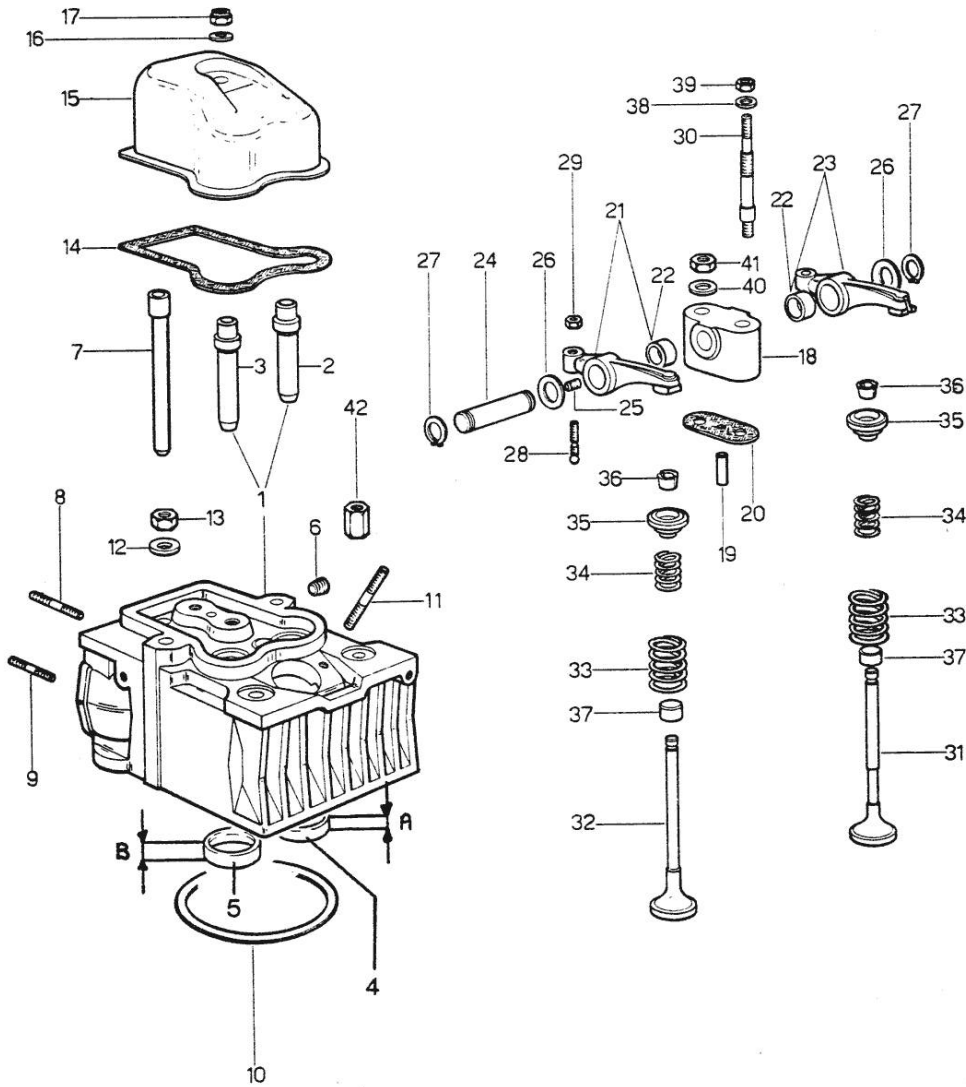


Fig.	P/n	QTY	Name
0	0.038.0057.6	1	gasket set - FOR 1 CYLINDER VALVE GRINDING AND PISTON RINGS REPLACEMENT
0	0.038.0058.6	1	gasket set - FOR GRINDING VALVES OF ONE CYLINDER
1	0.003.5047.6	3	engine head => 11899
1	0.036.1410.6/10	3	old part number 11898 <=
1	0.040.1410.3/20	3	old part number => 14022
2	0.029.1417.0	3	valve guide 11898 <=
2	0.037.1417.0/10	3	valve guide => 11899
3	0.037.1416.0	3	valve guide => 11899
3	0.037.1417.0/10	3	valve guide 11898 <=
4	0.037.1452.0	3	valve seat 41164 <=
4	0.037.1452.0/10	3	valve seat => 41165
5	0.037.1451.0	3	valve seat 41164 <=
5	0.037.1451.0/10	3	valve seat => 41165
6	2.3130.001.1	3	plug 1/8" gas 11898 <= - => 14022
6	2.3199.026.1	3	plug => 11899 - 14021 <=
7	0.029.1418.0	6	sleeve
8	2.0432.007.1	3	stud bolt m 8 p.1.25 / p.1 x 30
8	2.0432.022.1	1	stud bolt m 8 p 1.25-1x85
8	2.0432.026.1	2	stud bolt m 8 p.1.25 - 1.00 x 110
9	2.0432.007.1	3	stud bolt m 8 p.1.25 / p.1 x 30
10	2.1569.061.0/10	3	gasket
11	2.0439.087.1	6	stud bolt
12	2.1599.144.7	12	shoulder ring 12.5x23x4
13	2.1019.025.7	10	special nut
14	0.029.1450.0	3	gasket

Notes:
[MINITAURO 60 C]

Section: ENGINE
CYLINDER HEAD

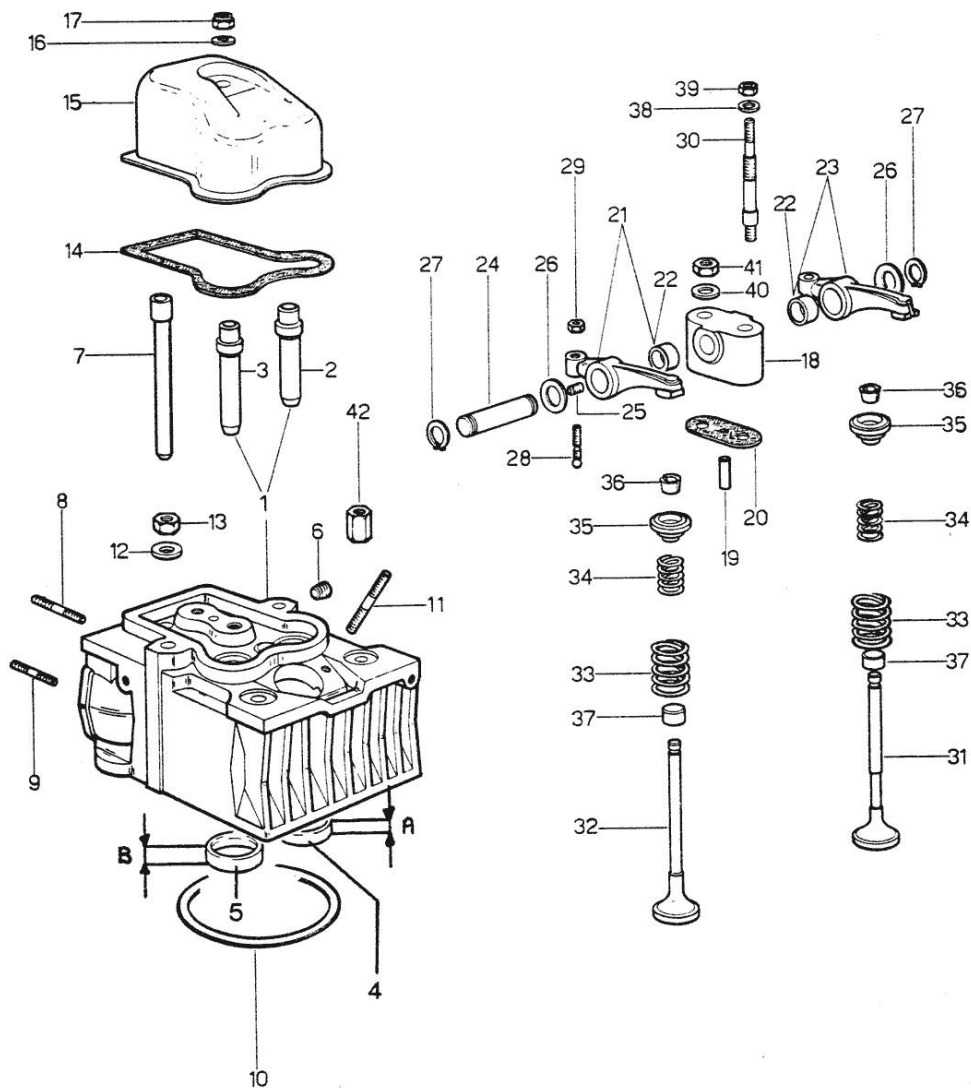
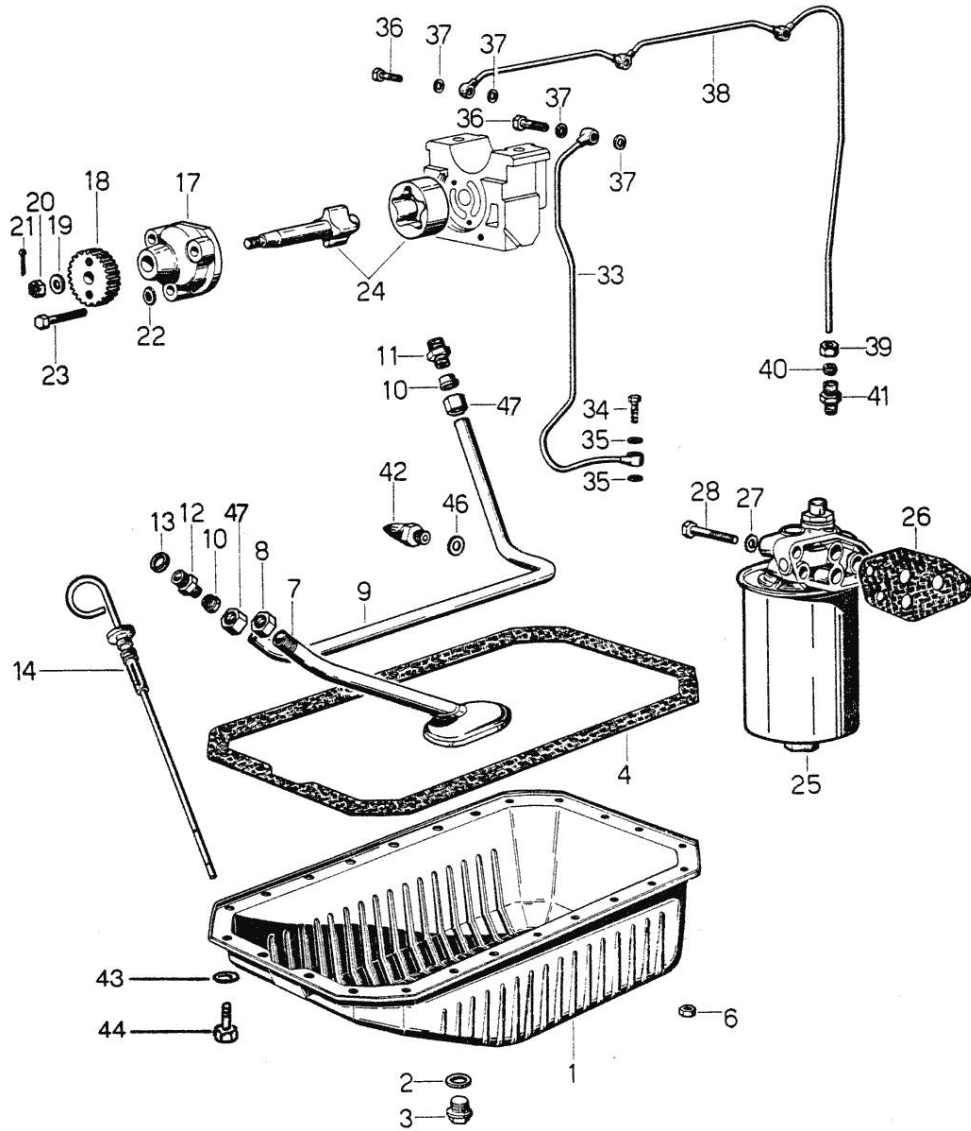


Fig.	P/n	QTY	Name
15	0.029.1440.2	3	cap 14021 <=
15	0.039.1440.0	3	cap => 14022
16	2.1560.004.0	3	copper gasket 8.2 x 14
17	2.1099.056.1	3	special nut m8 p.1
18	0.034.1430.0	3	support
19	0.029.1452.0	3	tube
20	0.034.1450.0	1	tappet gasket
21	0.002.5937.3/30	3	rocker arm
22	2.1559.021.0/40	12	bushing 15x19x22
23	0.002.5936.3/40	3	rocker arm
24	0.029.1431.0	3	pin
25	2.0512.102.1	3	screw m 6 p.1 x 8
26	2.1599.019.0	6	shoulder ring 19.5x31x2
27	2.1410.055.1	6	circlip 19
28	0.021.1434.0	6	screw
29	2.1019.039.1	6	old part number
30	0.029.1453.0/10	3	stud bolt 14021 <=
30	0.039.1451.0	3	stud bolt => 14022
31	0.029.1421.0/10	3	exhaust valve Ø mm 9 11898 <=
31	0.037.1421.0	3	exhaust valve Ø mm 9 => 11899 - 14021 <=
31	0.039.1421.0	3	exhaust valve Ø mm 9 => 14022
32	0.029.1420.0/10	3	inlet valve Ø mm 9 11898 <=
32	0.039.1420.0	3	inlet valve => 11899
33	2.4019.193.0	6	spring 36.15x55.2x3.2
34	2.4019.194.0	6	spring 22.70x50.7x2.1
35	0.002.9215.0	6	cup
36	0.002.9193.0	12	conical valve cotter
37	0.021.1453.0/20	6	small cover
38	2.1310.006.2	3	flat washer 10.5x21
39	2.1011.421.2	3	nut m 10 p.1.25
40	2.1599.160.7	3	flat washer
41	2.1099.035.7	3	special nut
42	2.1019.037.7	5	special nut

Section: ENGINE
LUBRICATION



Notes:
[MINITAURO 60 C]

Fig.	P/n	QTY	Name
1	0.035.1510.2/10	1	oil sump - IN SHEET STEEL
1	0.038.1556.0	1	oil sump - IN CAST IRON
2	2.1560.054.0	1	gasket 21 x 26
3	2.3199.001.2	1	plug 1/2" gas
4	0.029.1512.2	1	gasket FOR SHEET STEEL OIL TRAY
4	0.038.1555.0	1	gasket - WITH CAST IRON OIL SUMP
6	2.1011.405.2	24	nut m 8 p.1
7	0.029.1531.3	1	tube
8	2.1099.026.1	1	special nut
9	0.029.1534.0	1	tube
10	2.3359.004.2	2	ring
11	2.3319.014.1	1	pipe union
12	2.3319.013.1	1	pipe union
13	2.1560.013.0	1	gasket 18.2x22
14	0.038.1513.3	1	dipstick
17	0.029.1520.0	1	pump casing
18	0.029.1521.0/10	1	gear
19	2.1310.006.2	1	flat washer 10.5x21
20	2.1021.321.1	1	castellated nut
21	2.1690.210.0	1	split pin A2x25
22	2.1470.004.2	3	lock washer 8
23	2.0112.215.2	3	screw m 8 p.1.25 x 40
24	0.029.1522.3/10	1	shaft
25	2.4419.130.0/10	1	oil filter ☞ 01.00.6
26	0.037.1552.0/10	1	gasket
27	2.1480.015.1	3	washer 10
28	2.0112.315.2	1	screw m 10 p.1.5 x 40
28	2.0112.320.2	2	screw m 10 p.1.5 x 55
36	2.3339.001.0	3	pipe fitting m 10 p.1
37	2.1560.006.0	6	gasket 10.2 x 16
38	0.038.1536.3/10	1	tube
39	2.3360.002.1	1	union nut m 10
40	2.3350.002.1	1	nosepiece 6, d128
41	2.3319.002.1	1	pipe fitting
42	2.7099.020.0/10	1	pressure switch
43	2.1470.004.2	24	lock washer 8

Section: ENGINE
LUBRICATION

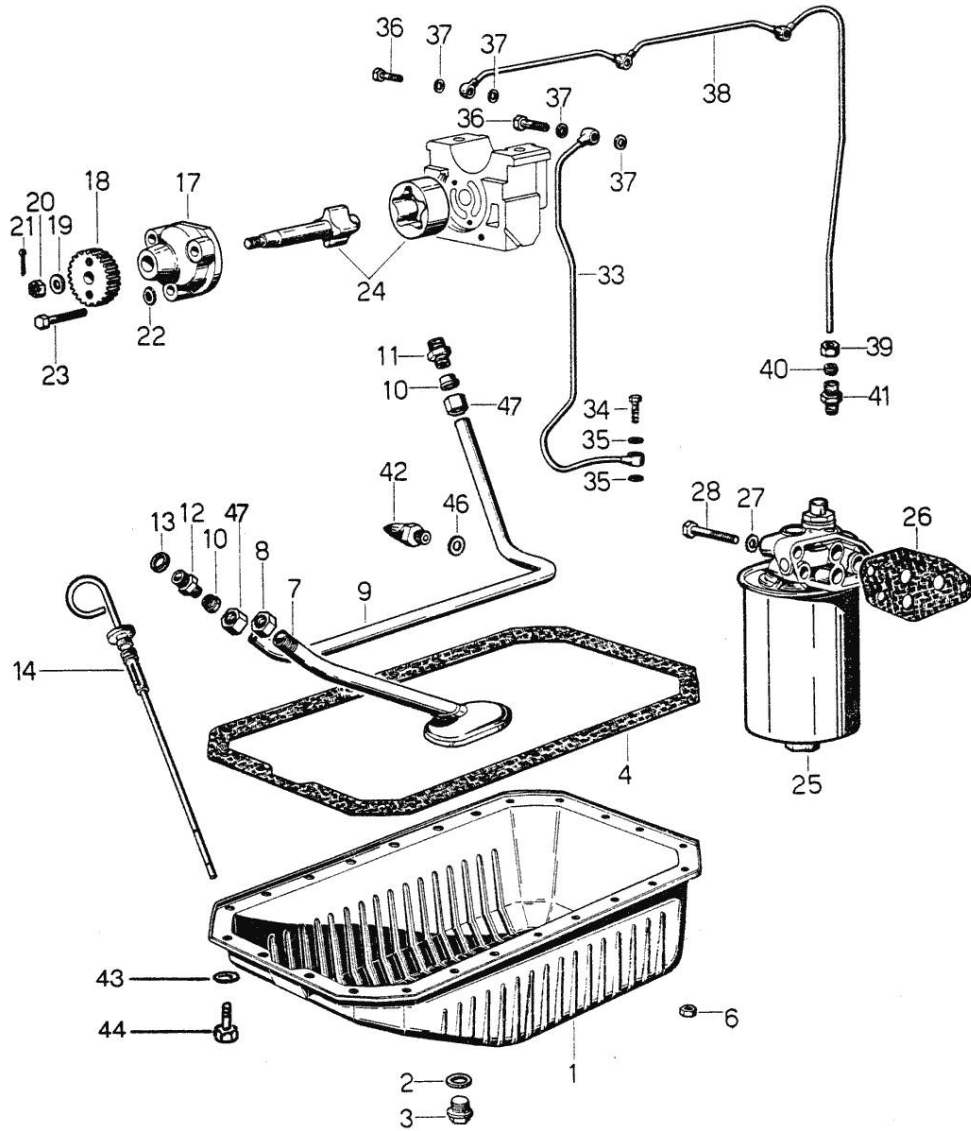


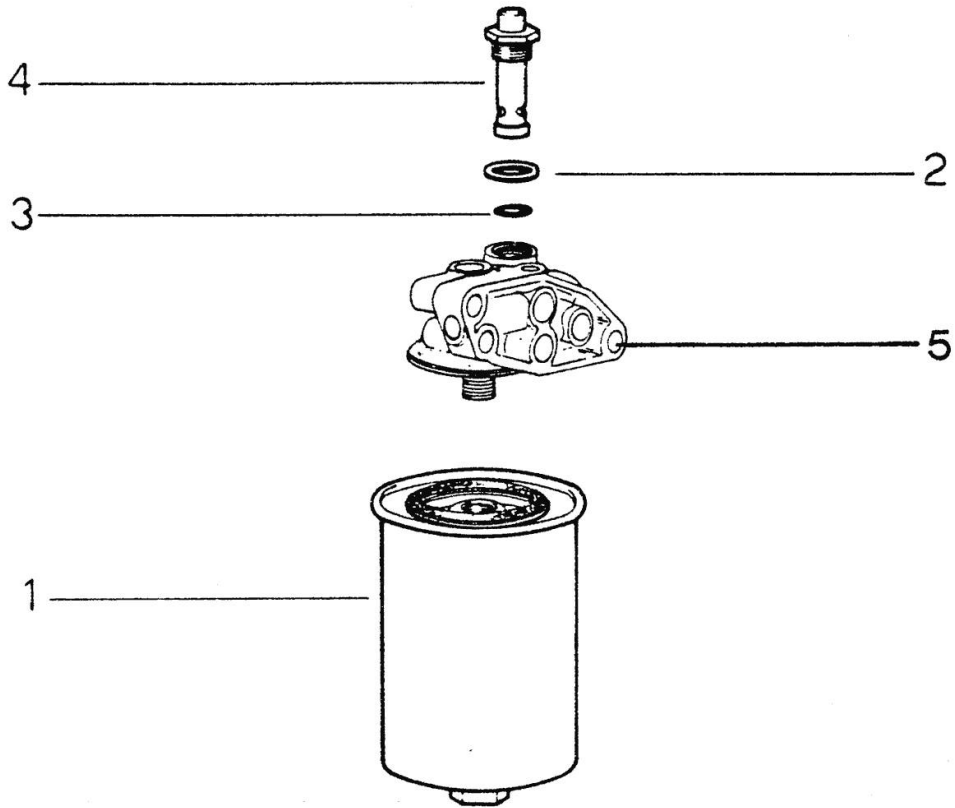
Fig.	P/n	QTY	Name
44	2.0112.209.2	22	screw m 8 p 1.25 x 25
44	2.0112.222.2	2	screw m 8 p.1.25x65
46	2.1560.008.0	1	gasket 12.2 x 18
47	2.3369.009.1	2	union nut

DETAILS OF OIL FILTER

Fig.	P/n	QTY	Name
------	-----	-----	------

Notes:
[MINITAURO 60 C]

0	2.4419.130.0/10	1	oil filter
1	2.4419.150.1	1	oil filter element
2	2.4419.130.3	1	gasket
3	2.1530.045.0	1	oil seal 17.86x2.62
4	2.4419.130.2	1	valve
5	0.000.0000.1	1	cannot be supplied



Thank you so much for reading.
Please click the “Buy Now!”
button below to download the
complete manual.



After you pay.

You can download the most
perfect and complete manual in
the world immediately.

Our support email:

ebooklibonline@outlook.com