

Section: ENGINE
CRANKCASE

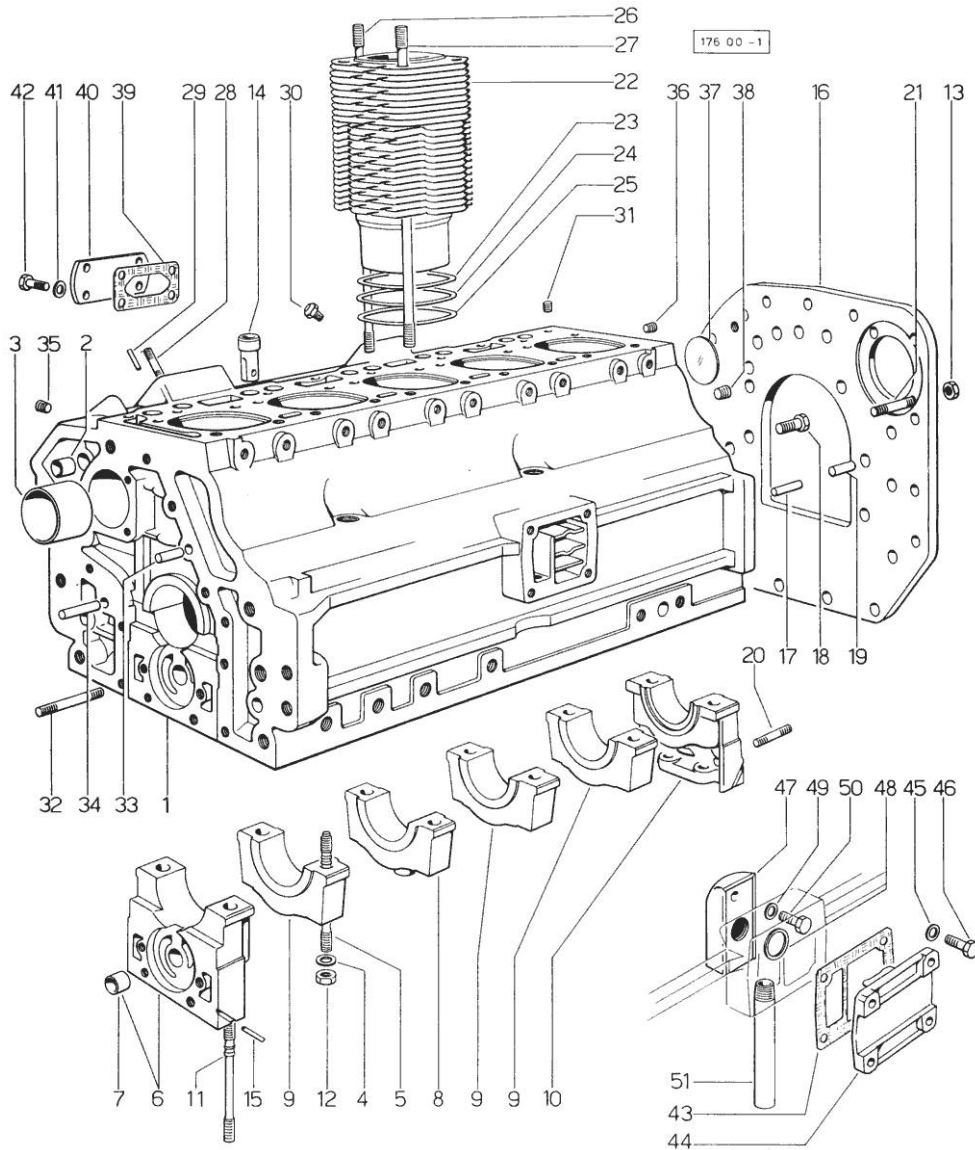


Fig.	P/n	QTY	Name
------	-----	-----	------

Notes:
[PANTHER 90 -> 5001]

0	0.048.0050.6	1	gasket set - FOR ENGINE MOUNTING
1	0.048.1110.4/30	1	old part number
2	2.1559.111.0	2	bushing 12x14x10
3	0.037.1155.0	1	bushing
4	2.1599.144.0	12	shoulder
5	0.029.1117.0	8	stud bolt
6	0.036.1112.3	1	support
7	2.1559.090.0/10	1	bushing 14.24x19.06x27
8	0.037.1114.0	1	support
9	0.029.1113.0	3	support
10	0.029.1116.0	1	support
11	0.021.1157.0	4	stud bolt
12	2.1019.026.1	12	special nut m 12 p.1.5
13	2.1011.207.2	2	nut m 12 p.1.5
14	0.044.1156.0	10	special bushing
15	0.029.1154.0	4	gasket
16	0.044.1159.0	1	flange => 5061
16	0.047.1130.0/10	1	flange 5060 <=
17	2.1653.708.0	2	pin 8x18
18	2.0112.513.1	11	screw m 14 p.2 x 35
19	2.1652.911.0	2	cylindrical plug 12x25
20	2.0432.153.1	2	stud bolt m 10 p.1.5 / p.1.25 x 20
21	2.0432.255.1	2	stud bolt m 12 p.1.75 - 12 p1.25x25
22	0.045.1120.0/10	5	engine cylinder
23	2.1589.052.0	10	shoulder ring 115x123x0.2
24	2.1589.051.0	5	shoulder ring 116x123x0.1
25	2.1569.076.0	5	gasket 116x123x0.5
26	0.041.1123.0	5	stud bolt m 10
27	0.039.1122.0	20	stud bolt m 12 p.1.5x310
28	2.0432.003.1	8	stud bolt m 8 p.1.25 / p.1 x 20
29	2.1653.306.0	2	pin
30	0.041.1151.3/10	5	sprayer nozzle
31	2.3130.001.1	4	plug 1/8" gas
32	2.0432.025.1	2	stud bolt m 8 p 1.25-1x100
33	2.1653.711.0	1	pin
34	2.1699.114.0	1	pin 8x55
35	2.3139.001.0	5	plug m 12 p.1.75
36	2.3130.002.1	1	plug 1/4" gas

Section: ENGINE
CRANKCASE

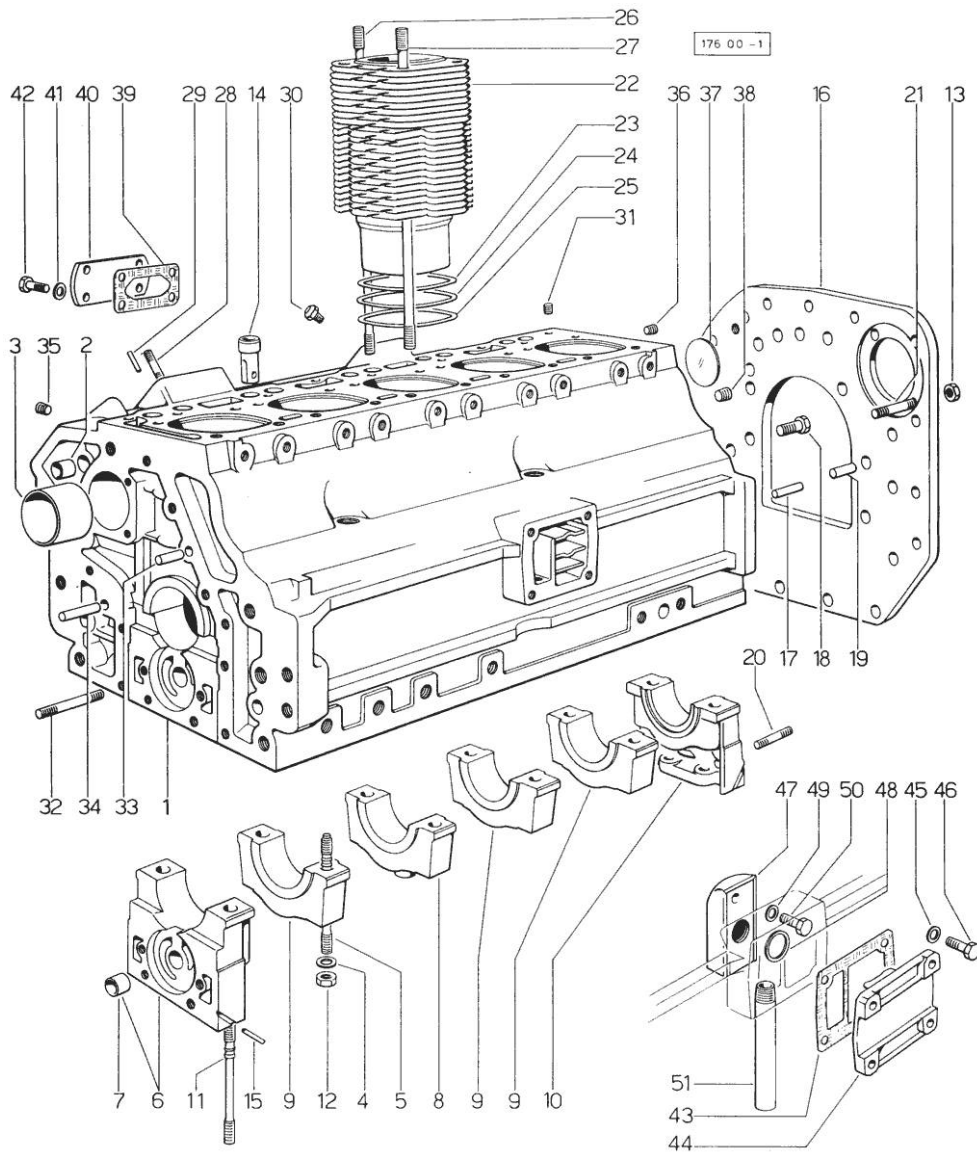


Fig.	P/n	QTY	Name
37	2.3170.022.1	1	expansion plug 60
38	2.3130.003.1	2	plug 3/8" gas
39	0.044.1151.0	2	gasket
40	0.044.1150.0	2	cover
41	2.1310.004.2	8	flat washer 8.4x17
42	2.0112.204.2	8	screw m 8 p.1.25x14
43	0.044.1153.0/10	1	gasket
44	0.044.1154.0	1	cover
45	2.1480.014.1	4	washer 8
46	2.0112.209.2	4	screw m 8 p 1.25 x 25
47	0.044.1155.2/10	1	old part number
48	0.045.1150.0	1	oil seal
49	2.1480.014.1	1	washer 8
50	2.0312.206.2	1	screw m 8 p 1.25 x 20
51	0.044.1152.0	1	tube

Section: ENGINE
TIMING CASE

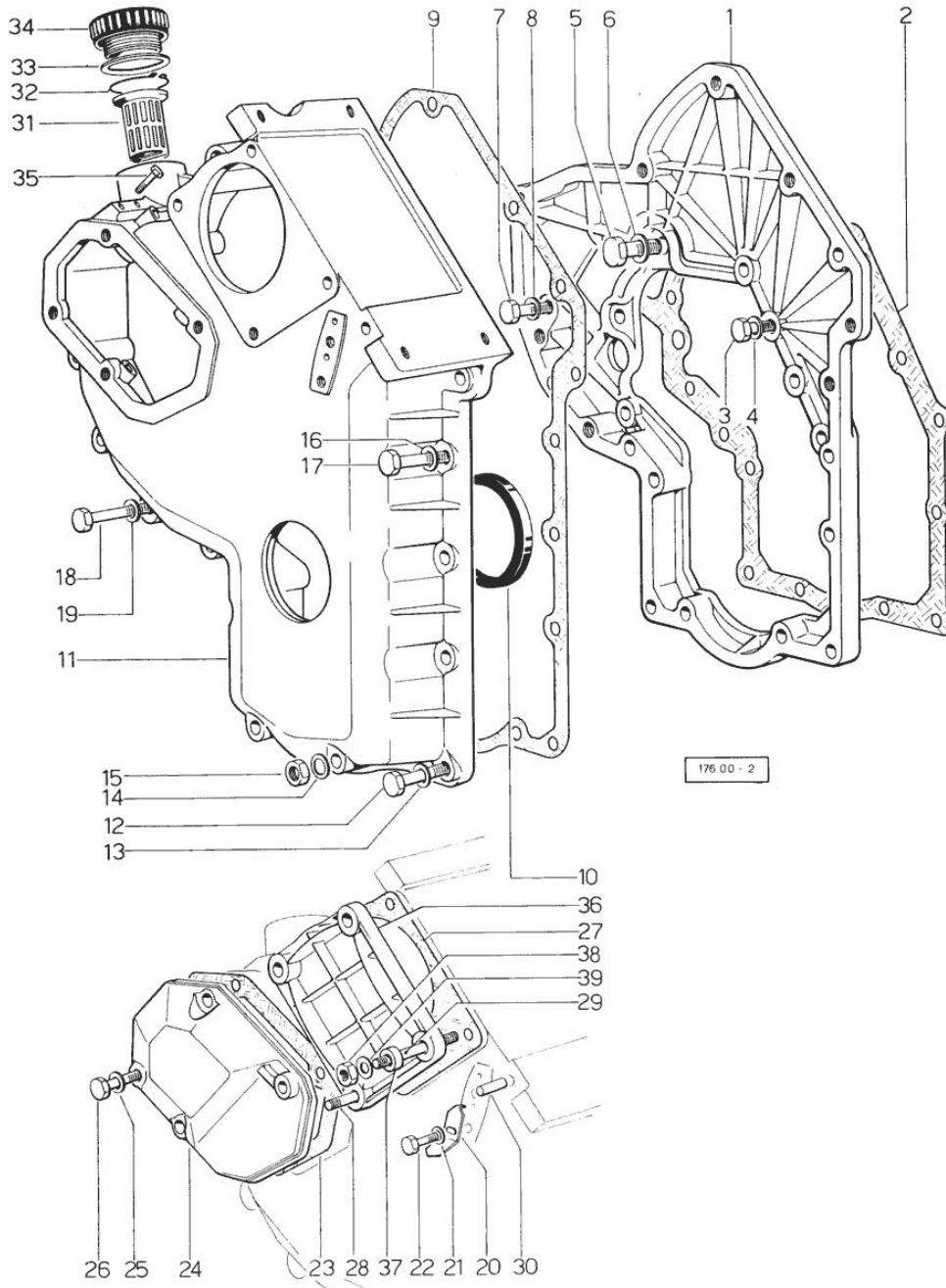


Fig.	P/n	QTY	Name
------	-----	-----	------

Notes:
[PANTHER 90 -> 5001]

1	0.048.1131.0	1	flange
2	0.041.1153.0	1	gasket
3	2.0112.209.2	5	screw m 8 p 1.25 x 25
4	2.1480.014.1	5	washer 8
5	2.0119.034.1	1	screw m 14 p.2x20
6	2.1560.010.0	1	gasket 14.2 x 20
7	2.0112.207.2	1	screw m 8 p 1.25 x 20
8	2.1480.014.1	1	washer 8
9	0.041.1152.0	1	gasket
10	2.1519.010.0	1	special oil seal 58x80x10
11	0.048.1132.0/10	1	guard => 5512
11	0.048.1132.6	1	guard 5511 <=
12	2.0112.217.2	5	screw m 8 p.1.25 x 45
13	2.1480.014.1	5	washer 8
14	2.1560.003.0	2	copper gasket 8.2 x 12
15	2.1011.405.2	2	nut m 8 p.1
16	2.1480.014.1	2	washer 8
17	2.0112.211.2	2	screw m 8 p.1.25 x 30
18	2.0112.222.2	4	screw m 8 p.1.25x65
19	2.1480.014.1	4	washer 8
20	0.041.1158.0	1	index
21	2.1310.004.2	1	flat washer 8.4x17
22	2.0112.204.2	1	screw m 8 p.1.25x14
23	0.048.1151.0/10	1	gasket
24	0.048.1150.0	1	cover 5511 <=
24	0.048.1150.0/10	1	old part number => 5512
25	2.1560.003.0	4	copper gasket 8.2 x 12 5511 <=
25	2.1560.005.0	4	copper gasket 10.2 x 14 => 5512
26	2.0112.215.2	4	screw m 8 p.1.25 x 40 5511 <=
26	2.0112.315.2	4	screw m 10 p.1.5 x 40 => 5512
27	0.041.1154.0	1	gasket
28	2.0432.013.1	1	stud bolt m 8 p.1.25 / p.1 x 45
29	2.0432.028.1	3	stud bolt m 8 p.1.25-1x130

Section: ENGINE

TIMING CASE

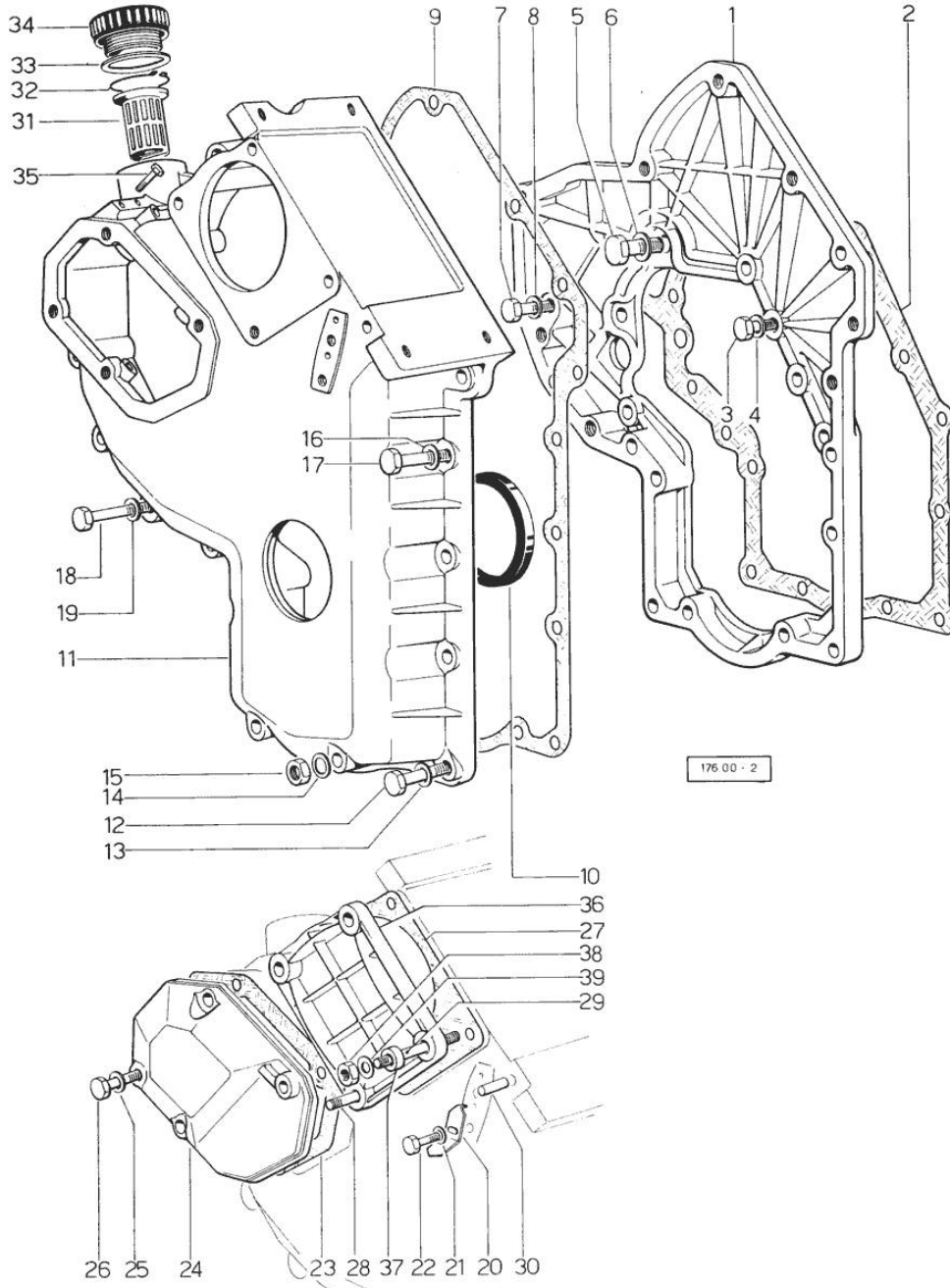
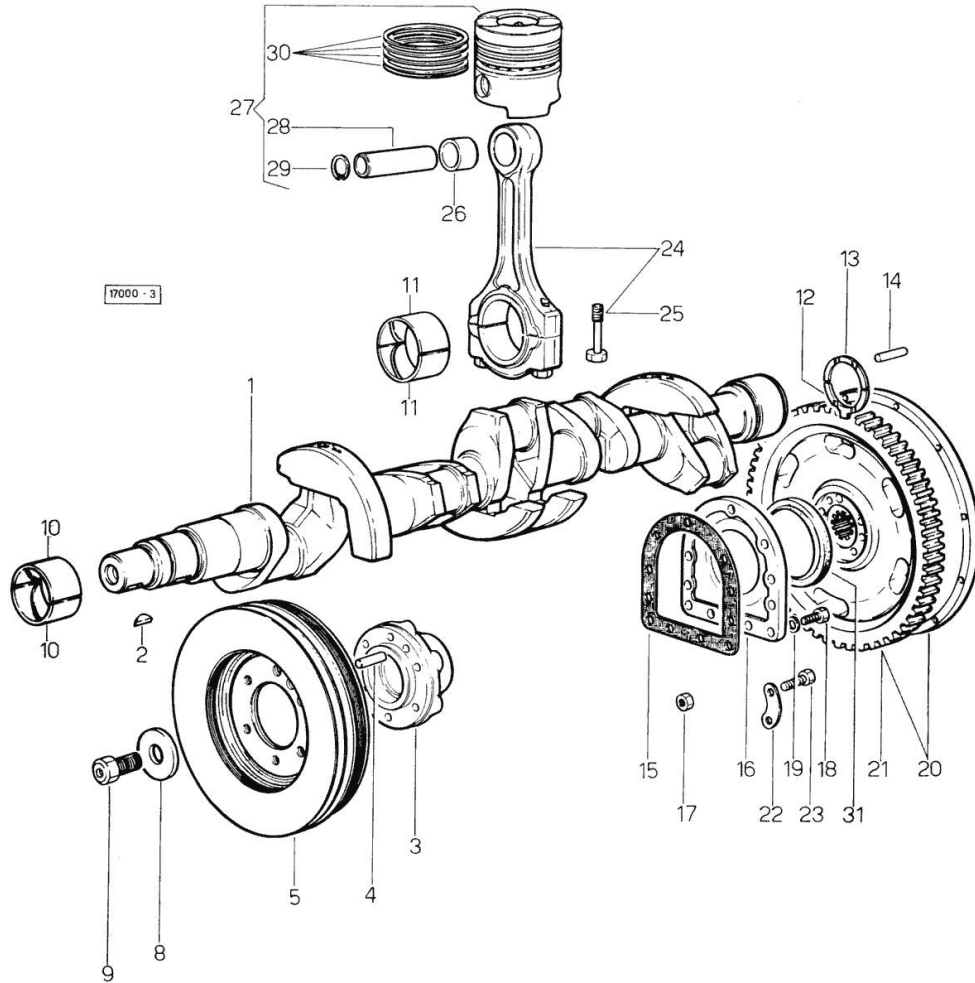


Fig.	P/n	QTY	Name
30	2.1653.717.0	1	pin 8 x 40
31	0.041.1159.0/10	1	filter
32	2.1411.012.1	1	circlip 30
33	2.1569.072.0	1	gasket 32 x 39.5 x 2
34	0.041.1135.0	1	plug
35	2.0439.055.1	2	stud bolt m 6 p.1 x 18
36	0.037.1151.0	1	cover
37	2.1579.191.0	4	spacer 8.5 x 18 x 20
38	2.1011.505.2	4	nut m 8 p.1
39	2.1310.004.2	4	flat washer 8.4x17

Section: ENGINE
CRANKSHAFT

Fig.	P/n	QTY	Name
------	-----	-----	------

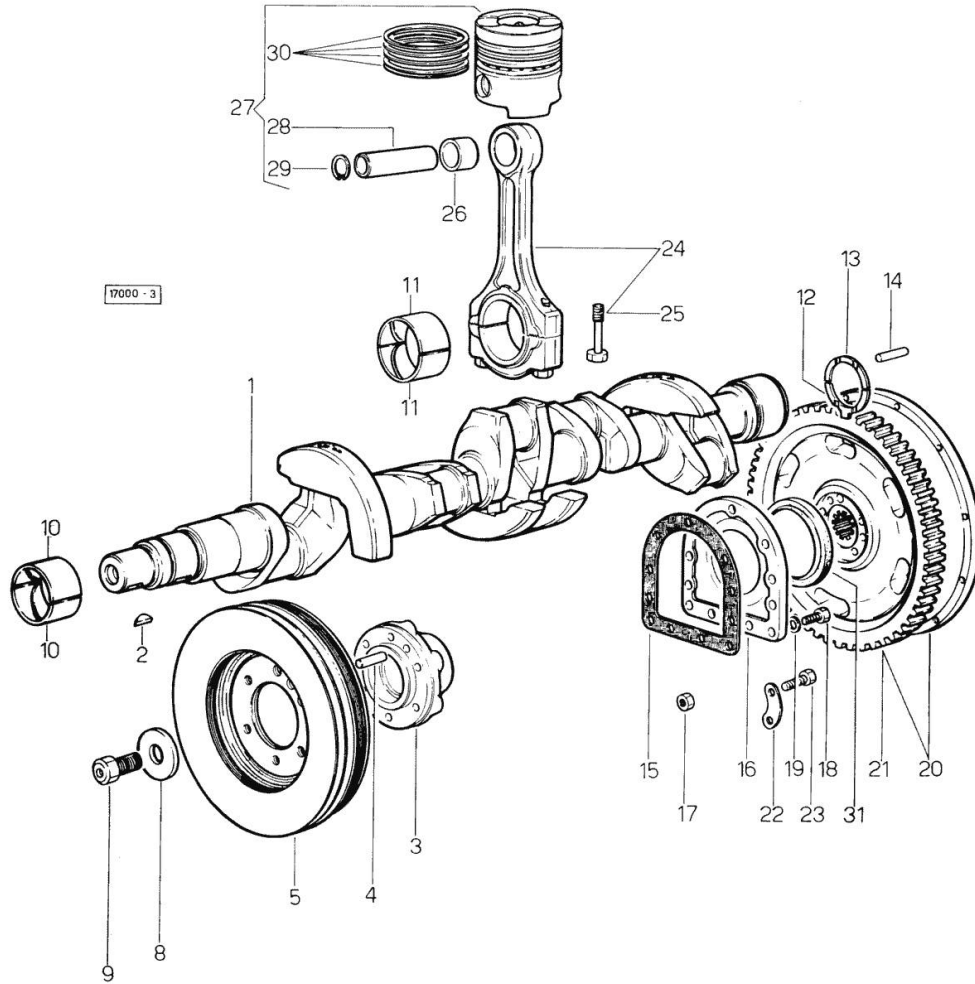
Notes:
 [PANTHER 90 -> 5001]



1	0.041.1210.4	1	crankshaft
2	2.1799.002.0	1	stick 10x13
3	0.037.1250.0/10	1	hub
4	2.1651.909.0	1	cylindrical plug 12 x 20
5	0.048.1246.3	1	old part number
8	0.001.6020.0	1	shoulder
9	2.0129.032.2	1	screw m 24 p.2x45
10	0.029.0066.0	12	main half bushing - mm 1.00
10	0.029.1215.0	12	main half bushing
10	0.029.1215.7	12	main half bushing - mm 0.25
10	0.029.1215.8	12	main half bushing - mm 0.50
10	0.029.1215.9	12	main half bushing - mm 0.75
11	0.039.0068.0	10	con.rod half bushing - mm 1.016
11	0.039.1225.0	10	con.rod half bushing
11	0.039.1225.7	10	con.rod half bushing -mm 0.254
11	0.039.1225.8	10	con.rod half bushing -mm 0.508
11	0.039.1225.9	10	con.rod half bushing -mm 0.762
12	0.001.4196.0	2	shoulder ring
12	0.001.4547.0	2	shoulder ring + mm 0.05
12	0.001.4548.0	2	shoulder ring + mm 0.10
12	0.001.4549.0	2	shoulder ring + mm 0.15
13	0.001.4197.0	2	shoulder ring
13	0.001.4544.0	2	shoulder ring + mm 0.05
13	0.001.4545.0	2	shoulder ring + mm 0.10
13	0.001.4546.0	2	shoulder ring + mm 0.15
14	2.1652.915.0	2	cylindrical plug 12x35
15	0.029.1250.0	1	gasket
16	0.029.1240.0	1	flange
17	2.1011.421.2	2	nut m 10 p.1.25
18	2.0112.309.2	7	screw m 10 p.1.5 x 25
19	2.1480.015.1	7	washer 10
20	0.048.1241.3/10	1	flywheel
21	0.036.1242.0	1	crown wheel Z = 126, mm 15
22	2.1379.006.0	3	lock-tab 15x15x36,5
23	2.0122.517.7	6	screw m 14 p.1.5x45
24	0.039.1220.3/10	5	engine connecting rod
25	0.039.1250.0	10	screw m 14 p.1.5x63
26	0.002.4168.0	5	bearing
27	0.045.0060.6	5	old part number
27	0.045.0061.6	5	old part number
27	0.045.0062.6	5	old part number

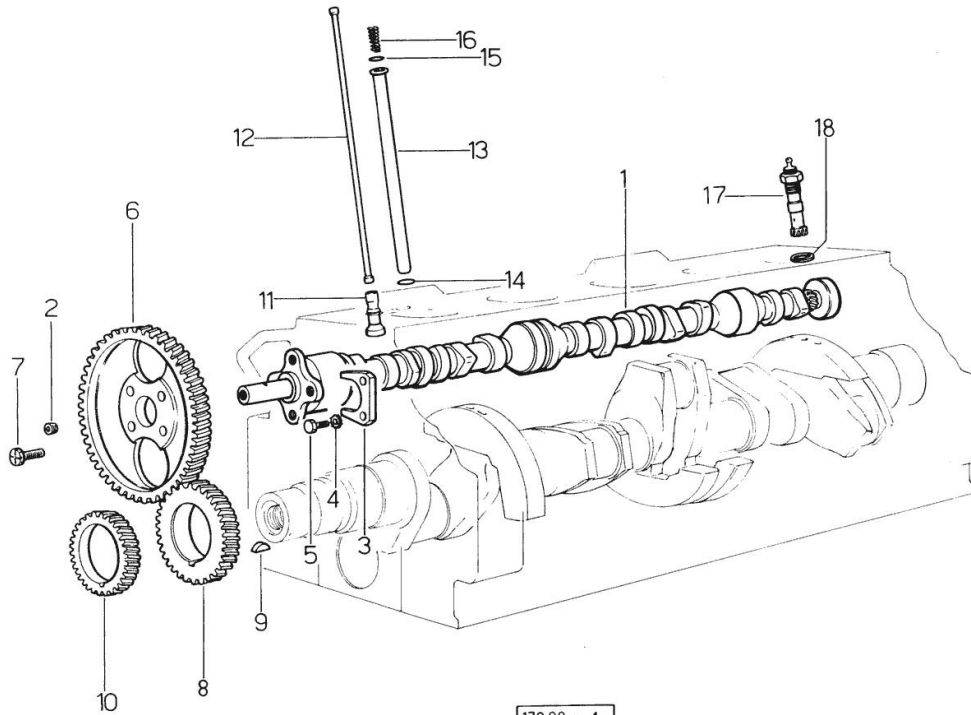
Section: ENGINE
CRANKSHAFT

Fig.	P/n	QTY	Name
28	0.002.4167.0	5	piston pin
29	2.1411.014.1	10	circlip 35
30	0.045.0052.6	5	piston ring set
30	0.045.0053.6	5	piston ring set + mm 0.5
30	0.045.0054.6	5	piston ring set + mm 1.00
31	2.1519.009.0	1	special oil seal
32	2.1560.006.0	2	gasket 10.2 x 16



Section: ENGINE

CAMSHAFT



170.00 - 4

Fig.	P/n	QTY	Name
------	-----	-----	------

Notes:

[PANTHER 90 -> 5001]

1	0.048.1310.0	1	camshaft
2	2.3130.001.1	1	plug 1/8" gas
3	0.027.1314.0	1	flange
4	2.1470.004.2	2	lock washer 8
5	2.0312.206.2	2	screw m 8 p 1.25 x 20
6	0.041.1321.0	1	gear z = 66
7	2.0139.005.1	4	screw m 10 p.1 x 25
8	0.040.1320.0	1	gear z = 33
9	2.1720.010.0	1	key 5x9
10	0.040.1323.0/10	1	gear Z = 38
11	0.044.1330.0/10	1	tappets
12	0.041.1331.3	10	rod
13	0.041.1332.0	10	sleeve
14	2.1539.020.0	10	special oil seal 13.95x2.62
15	2.1539.019.0	10	oil seal
16	2.4019.162.1/20	10	spring 17.2x46x1.8
17	0.041.1355.3	1	transmission
18	2.1560.013.0	1	gasket 18.2x22

Section: ENGINE
CYLINDER HEAD

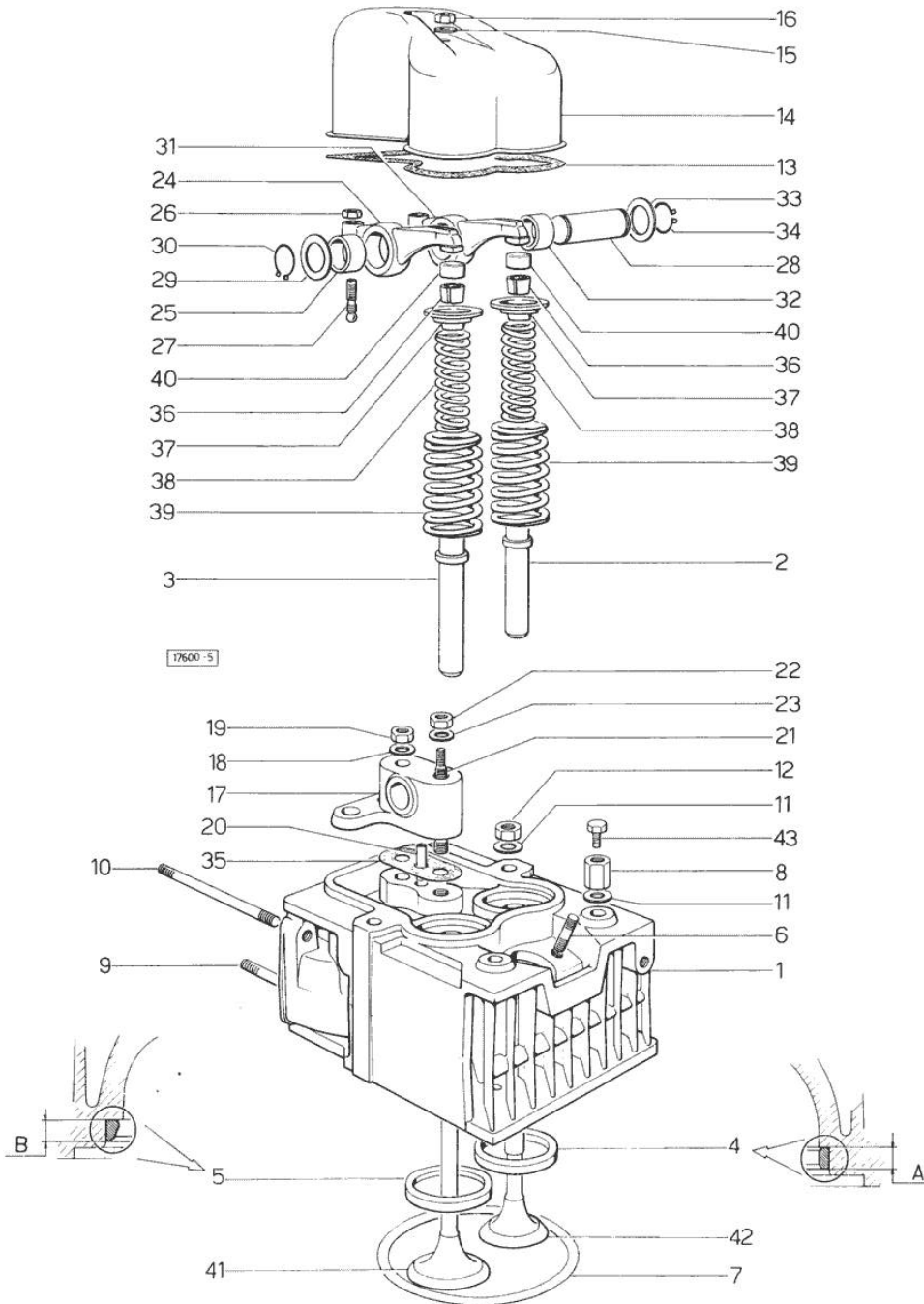


Fig.	P/n	QTY	Name
------	-----	-----	------

Notes:
[PANTHER 90 -> 5001]

0	0.045.0057.6	1	old part number - FOR 1 CYLINDER VALVE GRINDING AND PISTON RINGS REPLACEMENT
0	0.047.0057.6	1	gasket set - FOR GRINDING VALVES OF ONE CYLINDER
1	0.044.1450.3/20	5	engine head
2	0.037.1417.0/10	5	valve guide
3	0.037.1416.0	5	valve guide
4	0.037.1452.0	5	valve seat - A = MM 6.4
4	0.037.1452.0/10	5	valve seat - A = MM 6.2
5	0.037.1451.0	5	valve seat - B = MM 6.4
5	0.037.1451.0/10	5	valve seat - B = MM 6.2
6	2.0439.087.1	10	stud bolt
7	2.1569.077.0	5	gasket
8	2.1019.037.1	5	nut m 12 p.1.5x35
9	2.0432.007.1	10	stud bolt m 8 p.1.25 / p.1 x 30
10	2.0432.026.1	5	stud bolt m 8 p.1.25 - 1.00 x 110
11	2.1599.144.0	20	shoulder
12	2.1019.025.1	18	special nut
13	0.029.1450.0	5	gasket
14	0.039.1440.2	5	cap
15	2.1560.004.0	5	copper gasket 8.2 x 14
16	2.1099.056.1	5	special nut m8 p.1
17	0.041.1430.0	5	support
18	2.1599.160.0	5	washer 10.5x19x4
19	2.1099.035.1	5	special nut
20	0.029.1452.0	5	tube
21	0.039.1451.0	5	stud bolt
22	2.1011.421.2	5	nut m 10 p.1.25
23	2.1310.006.2	5	flat washer 10.5x21
24	002.5937.3/30	5	rocker arm
25	2.1559.021.0/40	5	bushing 15x19x22
26	2.1011.405.2	10	nut m 8 p.1
27	0.021.1434.0	10	screw
28	0.041.1431.0	5	pin
29	2.1599.019.0	5	shoulder ring 19.5x31x2
30	2.1410.055.1	5	circlip 19

Section: ENGINE
CYLINDER HEAD

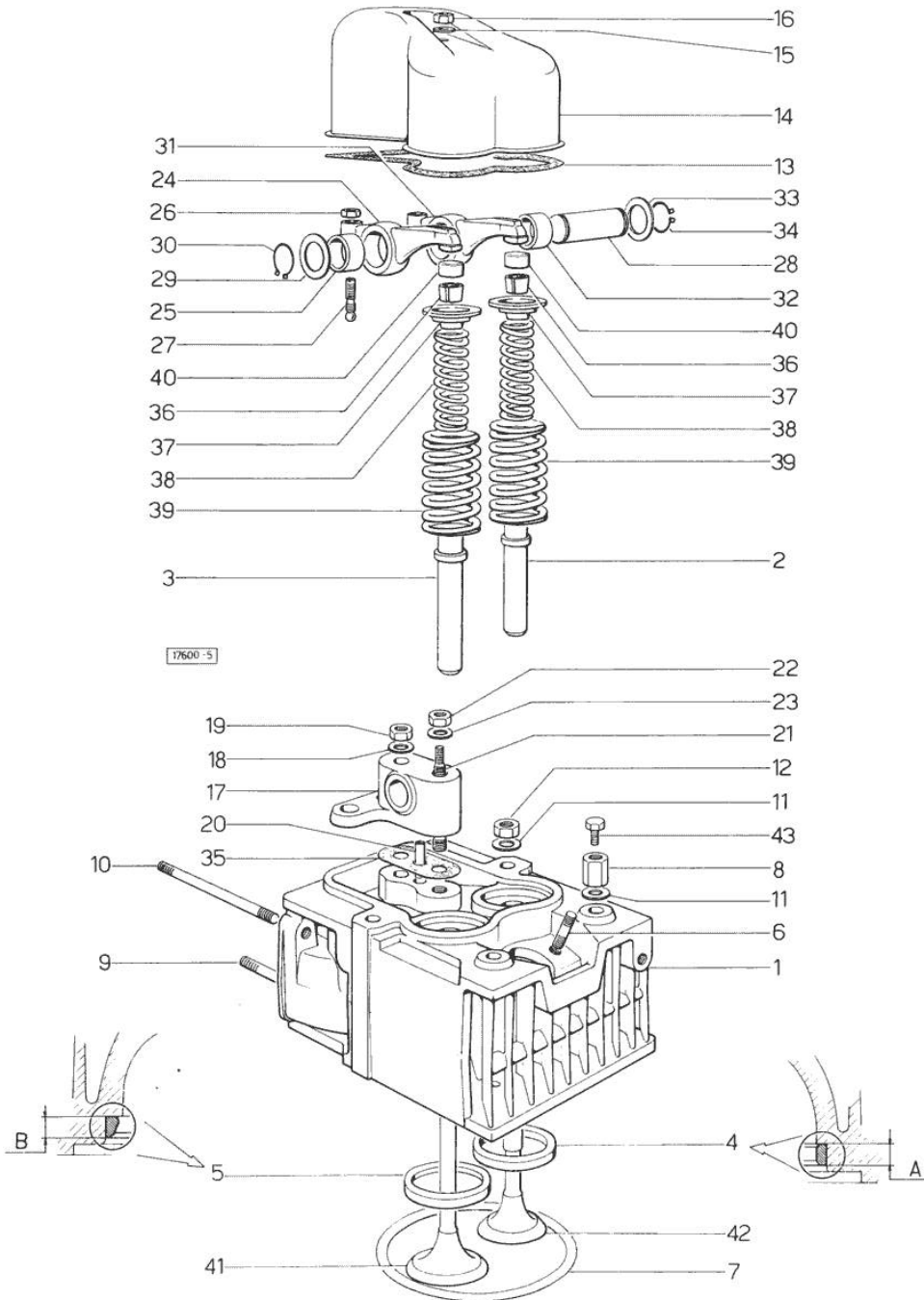


Fig.	P/n	QTY	Name
31	0.002.5936.3/40	5	rocker arm
32	2.1559.021.0/40	5	bushing 15x19x22
33	2.1599.019.0	5	shoulder ring 19.5x31x2
34	2.1410.055.1	5	circlip 19
35	0.034.1450.0	5	tappet gasket
36	0.002.9193.0	10	conical valve cotter
37	0.002.9215.0	10	cup
38	2.4019.194.0	10	spring 22.70x50.7x2.1
39	2.4019.193.0	10	spring 36.15x55.2x3.2
40	0.021.1453.0/20	10	small cover
41	0.039.1420.0	5	inlet valve
42	0.039.1421.0	5	exhaust valve Ø mm 9
43	2.0119.053.1	3	screw

Section: ENGINE

LUBRICATION 5511 <=

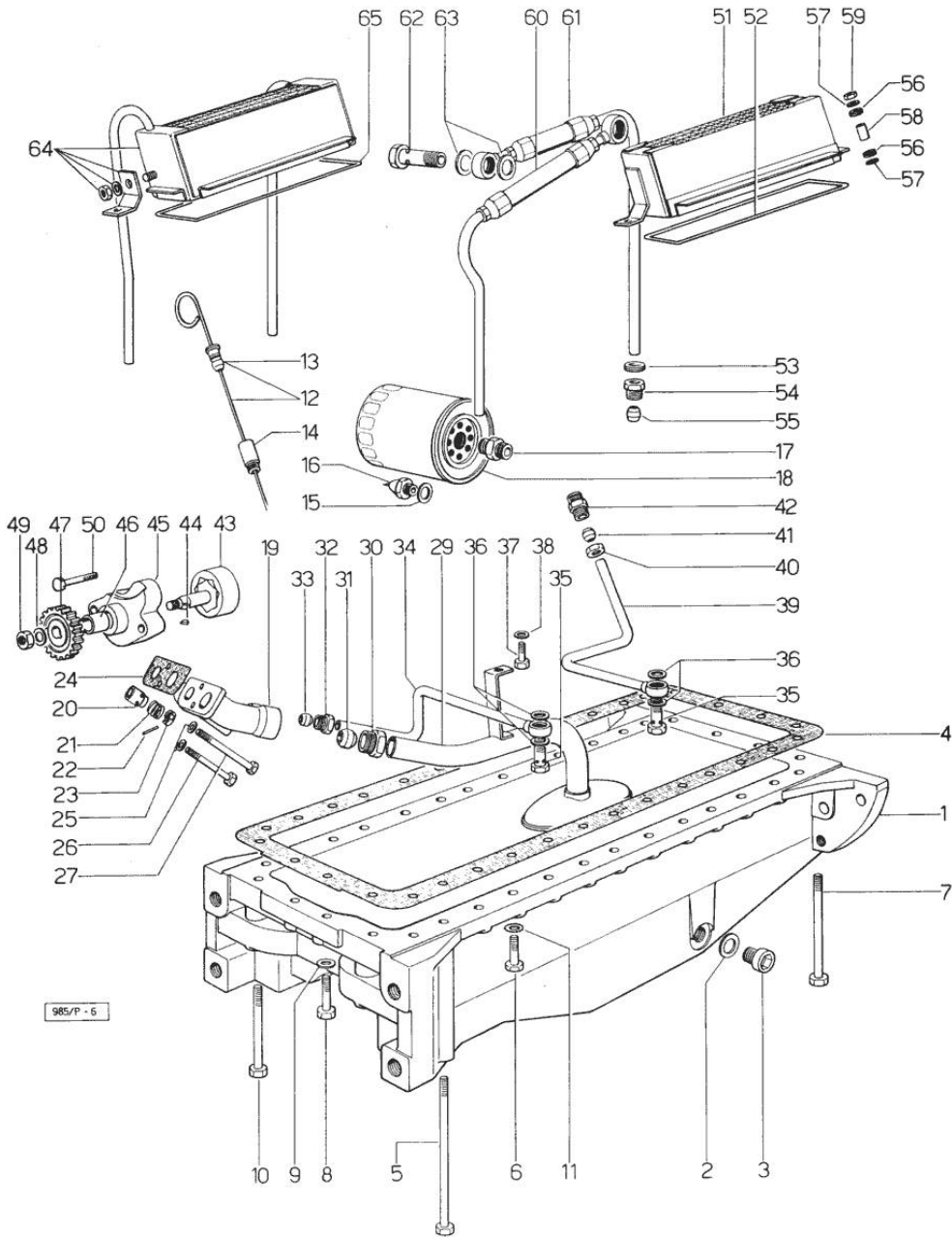


Fig.	P/n	QTY	Name
------	-----	-----	------

Notes:
[PANTHER 90 -> 5001]

1	0.048.1510.0	1	oil sump
2	2.1560.054.0	1	gasket 21 x 26
3	2.3199.001.2	1	plug 1/2" gas
4	0.041.1512.0	1	gasket
5	2.0112.244.2	2	screw m 8 p.1.25 x 180
6	2.0112.215.2	24	screw m 8 p.1.25 x 40
7	2.0112.237.2	4	screw m 8 p.1.25x140
8	2.0112.217.2	2	screw m 8 p.1.25 x 45
9	2.1560.004.0	4	copper gasket 8.2 x 14
10	2.0112.231.1	2	screw m 8 p 1.25x110
11	2.1470.004.2	30	lock washer 8
12	0.041.1513.3	1	dipstick
13	0.034.1551.0	1	gasket
14	0.044.1555.0	1	spacer
15	2.1560.008.0	1	gasket 12.2 x 18
16	2.7099.040.0	1	pressure switch m12 p.1.75
17	2.3339.094.1	1	pipe fitting m 20 p.1.5
18	0.041.1553.0	1	oil filter element
19	0.040.1530.0/10	1	tip
20	0.040.1550.0	1	small piston
21	2.4019.186.1	1	spring 15.8x53.5x1.8
22	2.1630.213.0	1	roll pin 3x32
23	0.040.1551.0	1	stop
24	0.037.1557.0/20	1	gasket
25	2.1480.014.1	2	washer 8
26	2.0112.225.2	1	screw m 8 p.1.25 x 80
27	2.0112.231.1	1	screw m 8 p 1.25x110
29	0.041.1531.3	1	tube
30	2.3319.030.1	1	pipe union
31	2.3359.008.0/10	1	nosepiece
32	2.3339.093.1	1	pipe fitting
33	2.3359.012.0	1	nosepiece 10x16.8
34	0.044.1542.2/10	1	tube
35	2.3330.007.1	2	pipe union
36	2.1560.018.0	4	gasket 22.2 x 29
37	2.0112.204.2	1	screw m 8 p.1.25x14
38	2.1310.004.2	1	flat washer 8.4x17
39	0.048.1543.2/20	1	tube
40	2.3339.096.1	1	pipe fitting
41	2.3359.012.0	1	nosepiece 10x16.8
42	2.3339.095.1	1	old part number

LUBRICATION 5511 <=

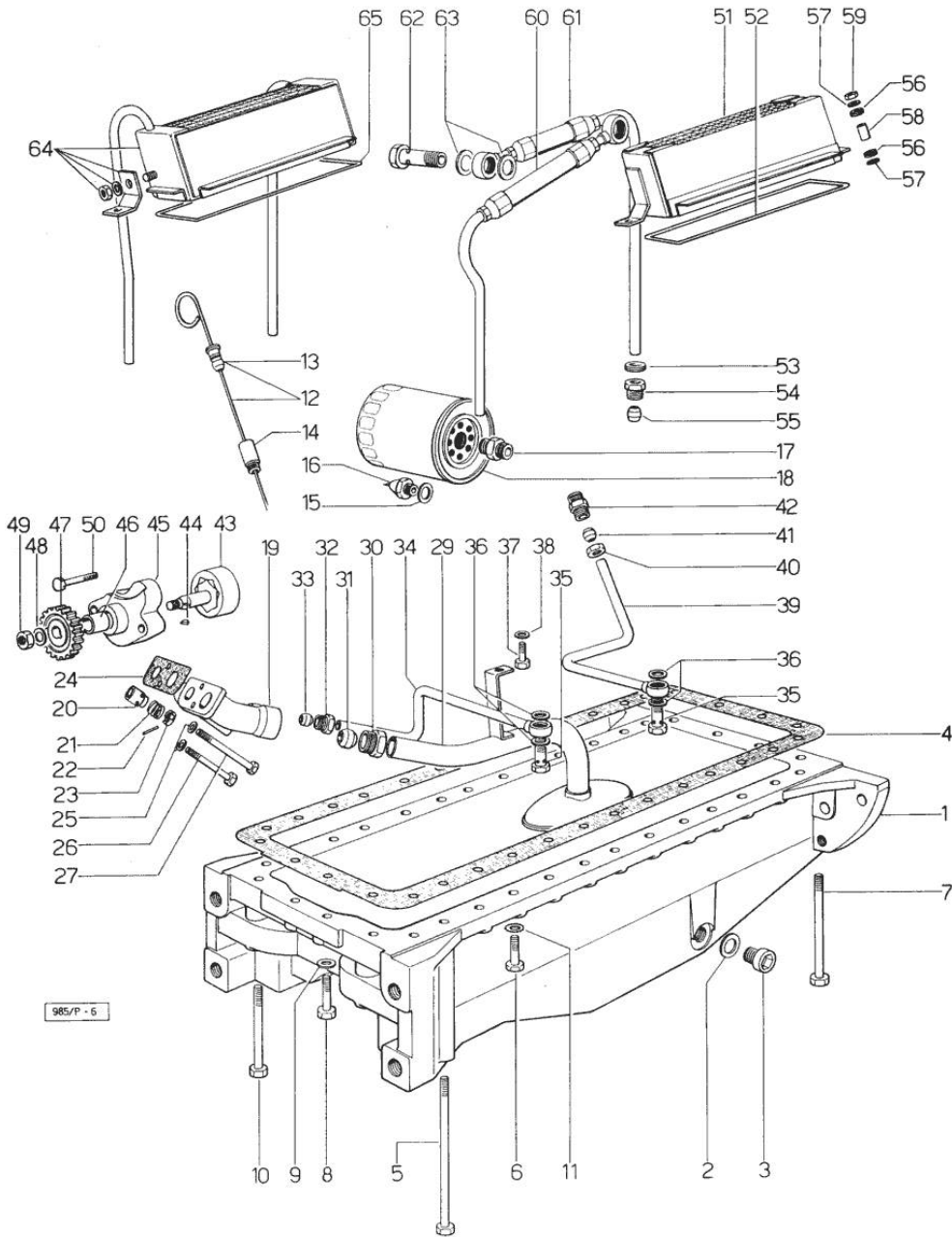


Fig.	P/n	QTY	Name
43	0.040.1524.3/10	1	rotor
44	2.1720.005.0	1	key 4x5
45	0.047.1520.3	1	pump casing
46	2.1559.086.0	1	bushing 18.07x22.06x30
47	0.040.1521.0/10	1	gear z = 27
48	2.1310.007.2	1	flat washer 13 x 24
49	2.1121.109.2	1	self-locking nut m 12 p.1.25
50	2.0112.219.2	2	screw m 8 p.1.25x55
51	0.046.1540.6	1	oil cooler
52	0.047.1552.0	1	gasket
53	2.6560.013.0	2	wire guide 18x1.5
54	2.3339.093.1	2	pipe fitting
55	2.3359.012.0	2	nosepiece 10x16.8
56	0.021.1560.0	4	rubber plug
57	2.1599.006.0	4	shoulder ring 8.4x25x2
58	0.427.6352.0	2	bushing 10x12x13
59	2.1011.105.2	2	nut m 8 p.1.25
60	0.047.1550.2/20	1	tube
61	0.047.1551.2/20	1	tube
62	2.3339.107.1	2	pipe union m 22
63	2.1560.018.0	4	gasket 22.2 x 29
64	0.046.1540.6	1	oil cooler
65	0.041.1541.0	1	gasket

Thank you so much for reading.
Please click the “Buy Now!”
button below to download the
complete manual.



After you pay.

You can download the most
perfect and complete manual in
the world immediately.

Our support email:

ebooklibonline@outlook.com