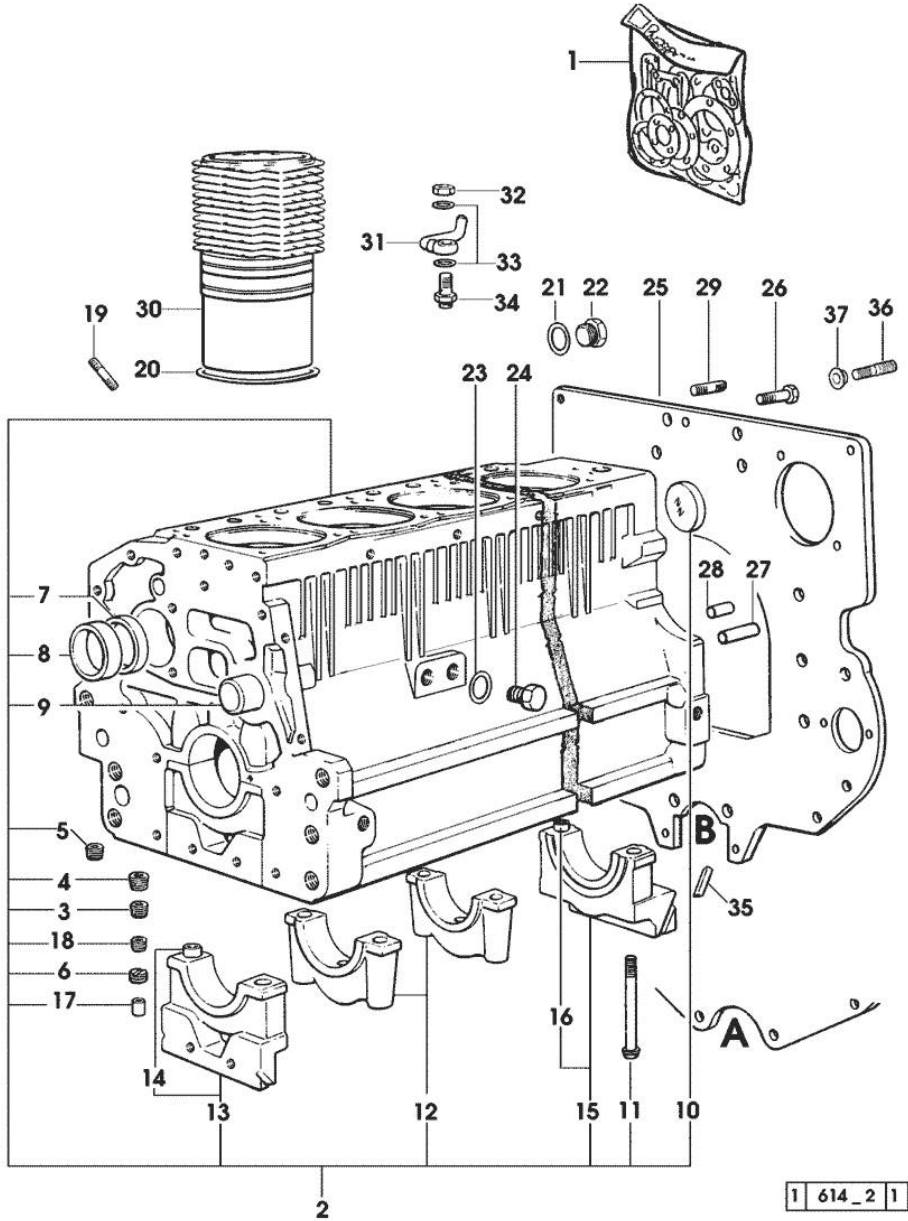


Section: ENGINE
CRANKCASE

Fig.	P/n	QTY	Name
------	-----	-----	------

Notes:
 [SILVER 100.6]

1	0.336.0050.6		gasket set - FOR ENGINE MOUNTING
2	0.007.0779.6/20	1	crankcase
3	2.3130.002.1	2	plug 1/4" gas
4	2.3130.003.1	7	plug 3/8" gas
5	2.3131.006.0	1	plug m 22 x 1.5
6	2.1324.011.0	1	plug
7	0.065.1140.0	6	special bushing 59X55X20
8	0.065.1141.0	1	special bushing 59X55X30
9	0.066.1151.0	1	pin
10	2.3179.012.0	1	plug 60
11	0.065.1117.0	14	screw m 12 x 100
12	0.065.1114.0/10	5	support
13	0.065.1112.7	1	support
14	2.1699.165.0	1	bush 12.3x15x16
15	0.007.0848.3/10	1	support
16	2.1699.165.0	1	bush 12.3x15x16
17	2.3199.092.0	6	plug 8 x 12
18	2.3130.001.1	15	plug 1/8" gas
19	2.0432.003.7	18	stud bolt m 8 p.1.25 / p.1 x 20
20	2.1539.130.0/10	6	special oil seal 117.07x3.53
21	2.1532.072.0	1	oil seal 26.70x1.78
22	2.3199.405.2	1	plug m 28 p.1.5
23	2.1560.017.0	1	gasket 22.2 x 27
24	2.3120.002.4	1	plug m 22 x 1.5
25	0.007.0805.0/20	1	flange (...) <= A > (...) = B
25	0.010.7201.0	1	flange
26	2.0112.511.1	8	screw m 14 p.2 x 30
27	2.1651.912.0	2	cylindrical plug 12x28
28	2.1651.917.0	1	cylindrical plug 12x40
29	2.0432.257.7	1	stud bolt m 12 p.1.75 - 1.25 x 30
30	0.007.0762.0/50	6	engine cylinder
31	0.086.1550.2	6	sprayer nozzle
32	2.1099.108.2	6	special nut m 10 p.1
33	2.1560.006.0	12	gasket 10.2 x 16
34	0.065.1160.3/20	6	valve
35	0.066.1152.0/10	4	gasket
36	2.0439.250.7	1	stud bolt m 12 / m 10 x 30
37	0.011.9294.0/10	1	bush



Section: ENGINE

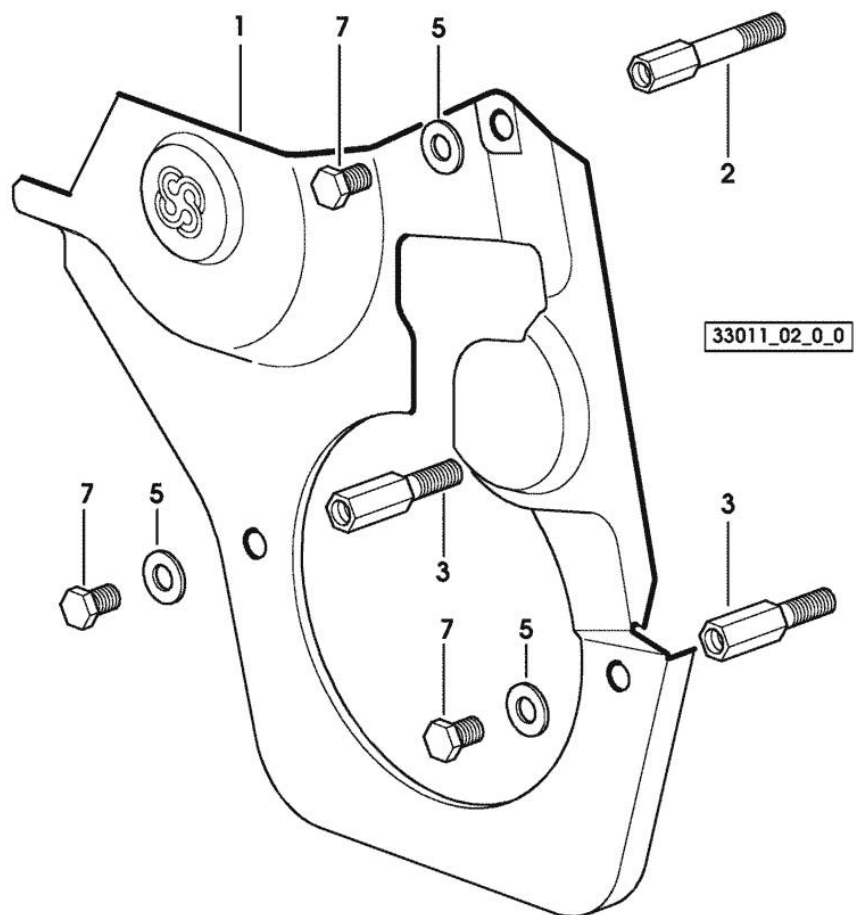
TIMING CASE

Fig.	P/n	QTY	Name
------	-----	-----	------

Notes:

[SILVER 100.6]

1	0.007.1262.3/50	1	guard
2	0.007.1271.0/10	1	small column m 8 p.1.25 / L = mm 60
3	0.007.1272.0/10	2	small column m 8 p.1.25 / L = mm 50
5	2.1310.004.2	3	flat washer 8.4x17
7	2.0112.205.2	3	screw m 8 p.1.25 x 16



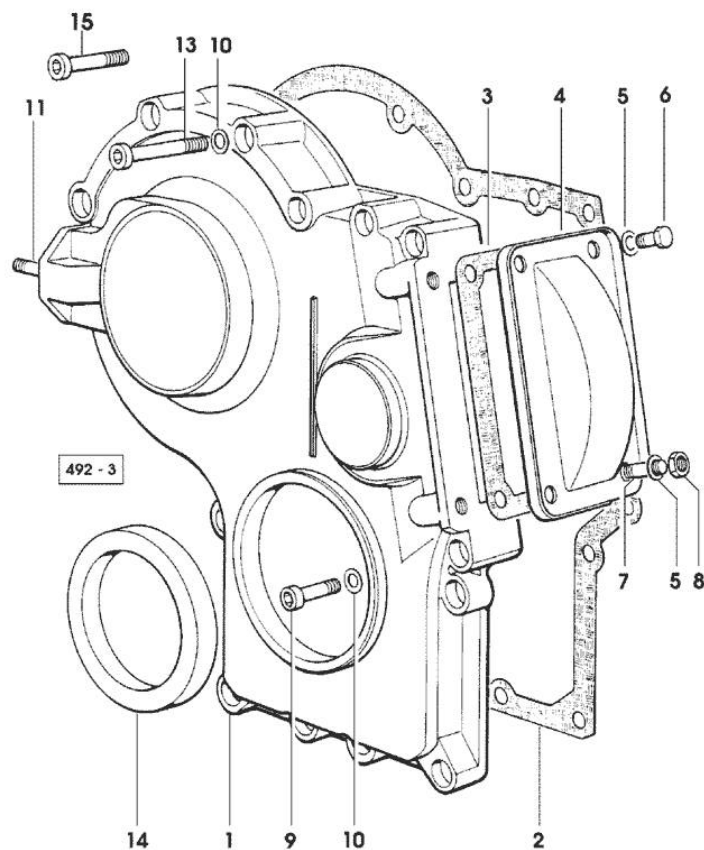
Section: ENGINE

TIMING CASE

Fig.	P/n	QTY	Name
------	-----	-----	------

Notes:

[SILVER 100.6]



1	0.065.1132.0/60	1	guard
2	0.065.1150.0/30	1	gasket
3	0.065.1152.0	1	gasket
4	0.065.1151.0	1	cover
5	2.1470.004.2	4	lock washer 8
6	2.0112.205.2	2	screw m 8 p.1.25 x 16
7	2.0432.005.7	2	stud bolt m 8 p.1.5 / p.1 x 25
8	2.1011.405.2	2	nut m 8 p.1
9	2.0312.208.2	8	screw m 8 p.1.25 x 25
10	2.1480.014.1	15	washer 8
11	2.0432.003.7	2	stud bolt m 8 p.1.25 / p.1 x 20
13	2.0312.219.2	4	screw m 8 p.1.25x65
14	2.1529.141.0	1	special oil seal
15	2.0312.214.2	3	screw m 8 p.1.25 x 40

Section: ENGINE
CRANKSHAFT

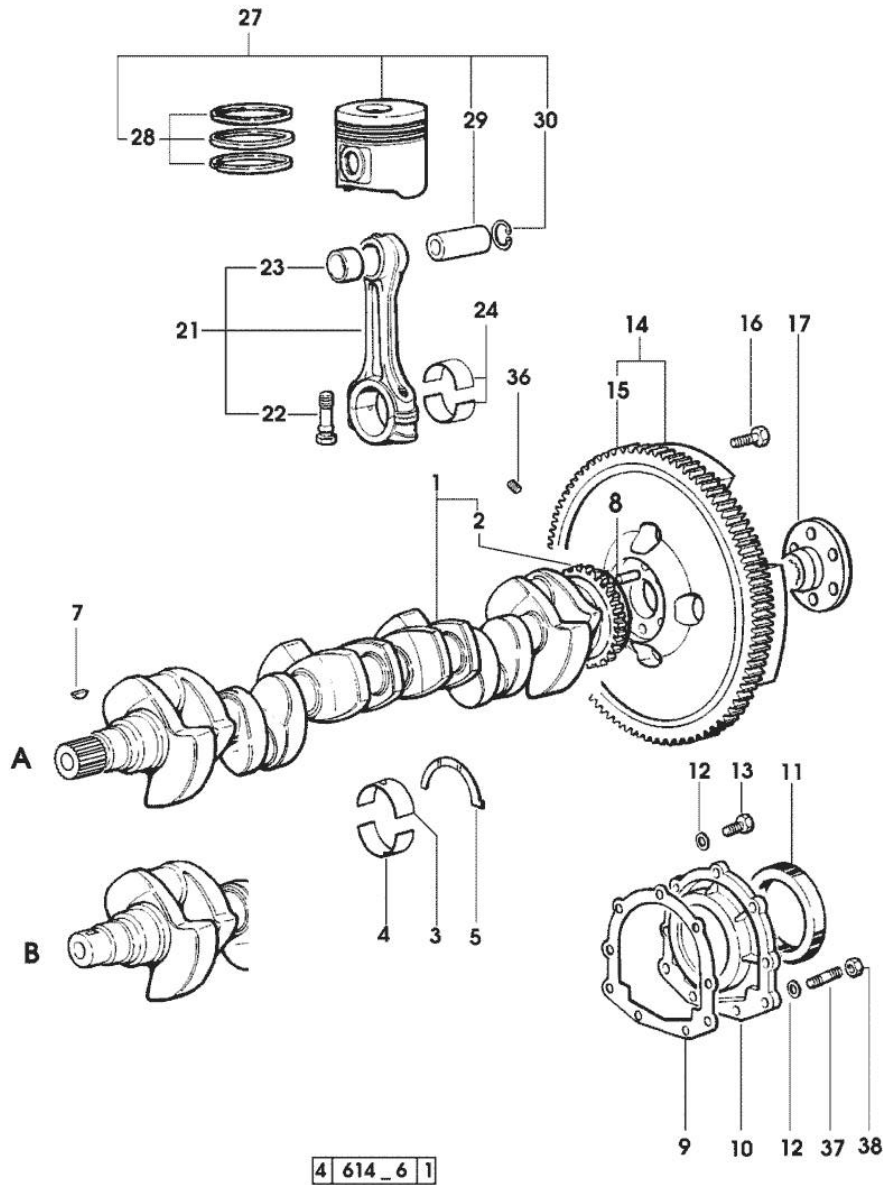
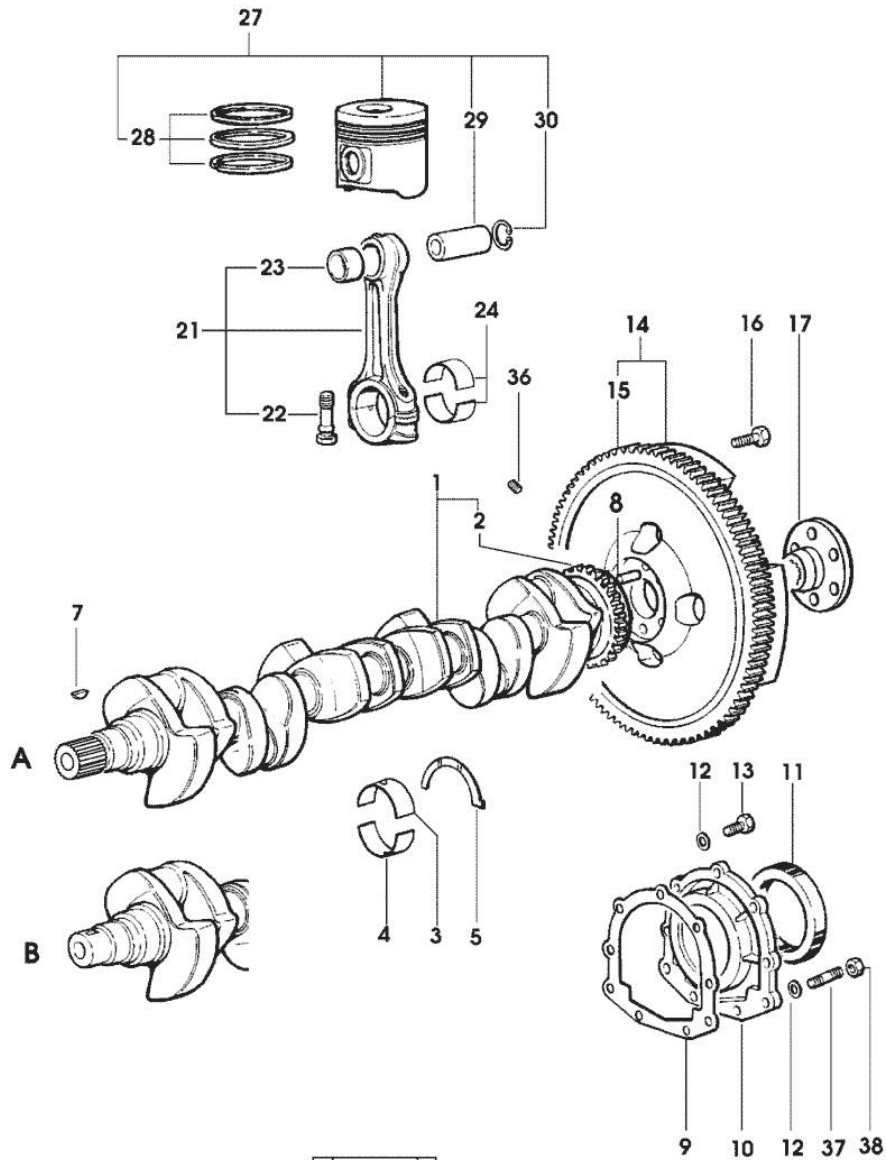


Fig.	P/n	QTY	Name
Notes: [SILVER 100.6]			
1	0.010.4320.3/20	1	crankshaft (...) <= " B " * N.1 011.2206.0/10
2	0.007.0855.0	1	gear
3	0.065.1215.0	7	main half bushing STANDARD
3	0.065.1215.7		main half bushing - mm 0.25
3	0.065.1215.8		main half bushing - mm 0.50
4	0.065.1216.0	7	main half bushing
4	0.065.1216.7		main half bushing - mm 0.25
4	0.065.1216.8		main half bushing - mm 0.50
5	0.065.1218.0	4	shim STANDARD
5	0.065.1218.7		shim + mm 0.10
5	0.065.1218.8		shim + mm 0.15
7	2.1720.006.0	1	key 4x6.5
8	2.1652.915.0	1	cylindrical plug 12x35
9	0.065.1254.0/20	1	gasket
10	0.007.0851.0/10	1	cover
11	2.1529.073.0	1	special oil seal 110x130x13
12	2.1474.009.2	9	spring washer 8
13	2.0112.207.2	7	screw m 8 p 1.25 x 20
14	0.007.1702.3/30	1	flywheel -> 3223
14	0.008.4049.3	1	flywheel mm 373 3222 <-
14	0.010.5467.3/10	1	flywheel 3233 <- X HYDRIVE
14	0.010.8727.3	1	flywheel -> 3234 X HYDRIVE
15	0.065.1242.0	1	crown wheel Z = 123
16	2.0119.174.0/10	6	screw m 12 p.1.25x45 - X HYDRIVE
16	2.0139.022.2	6	screw m 12 p.1.25x55
17	0.008.5543.0	1	flange
21	0.078.1220.3/30	6	engine connecting rod
22	2.0399.213.0	2	screw m 12 p.1.25x61.5
23	2.1559.114.0/10	1	special bushing
24	0.065.1225.0	12	con.rod half bushing STANDARD - A = 28.75 -> 29.00
24	0.065.1225.7		con.rod half bushing - mm 0.25
24	0.065.1225.8		con.rod half bushing - mm 0.50
27	0.086.0060.6/30	6	complete piston
27	0.379.0060.6	6	complete piston

CRANKSHAFT



4 614_6 1

Fig.	P/n	QTY	Name
			- EXPORT U.S.A.
28	0.086.0052.6/10	1	piston ring set
29	0.078.1236.0	6	piston pin Ø 18 / Ø 35 / L = mm 86
30	2.1411.014.1	12	circlip 35
36	2.3130.001.1	6	plug 1/8" gas
37	2.0432.003.7	2	stud bolt m 8 p.1.25 / p.1 x 20
38	2.1011.105.2	2	nut m 8 p.1.25

Section: ENGINE
ENGINE SHAFT - PULLEYS

4 728_6 2

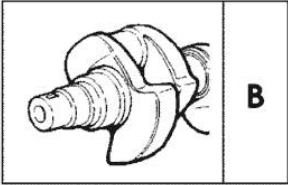
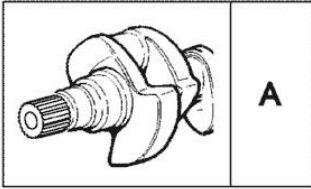
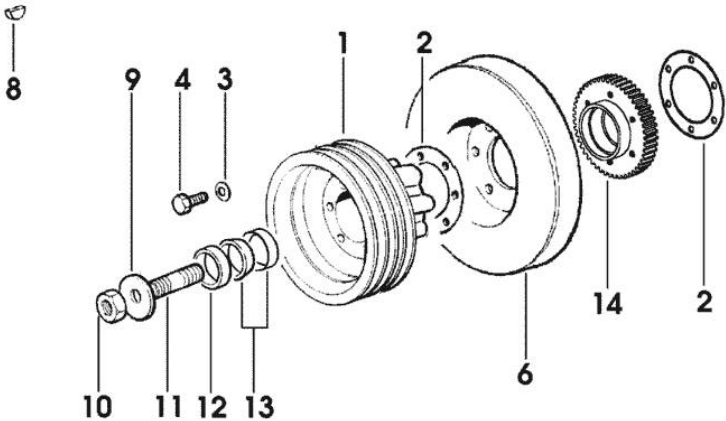
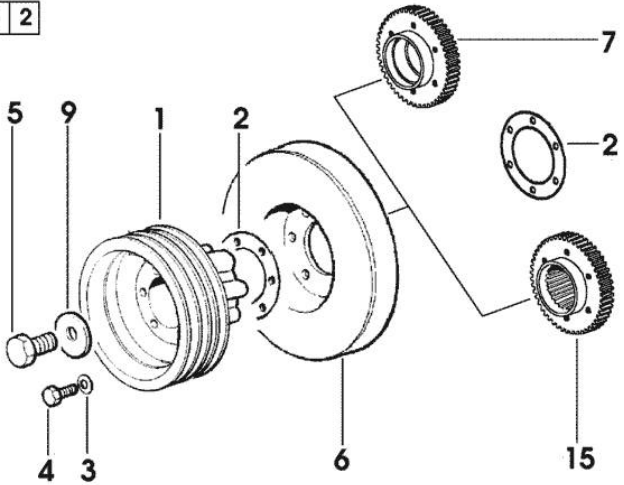


Fig.	P/n	QTY	Name
------	-----	-----	------

Notes:
 [SILVER 100.6]

1	0.007.6161.0	1	pulley * 1165 <= X SILVER 100.6 - N.1 - 007.6816.0
2	2.1589.136.0		shoulder ring 71x110x0.5
2	2.1589.137.0		shoulder ring 71x110x1
3	2.1470.006.2	6	lock washer 10
4	2.0112.322.2	6	screw m 10 p.1.5x65
5	2.0399.144.7/10	1	screw m 20 p.1.5x51
6	0.007.1010.3	1	antivibration pulley
7	0.011.2140.0/10	1	hub - X B (...) <=
8	2.1720.006.0	1	key 4x6.5 - X B (...) <=
9	2.1599.524.7	1	washer 21x60x12
10	2.1019.094.7	1	nut m 20 p.1.5 - X B (...) <=
11	2.0439.195.7	1	stud bolt m 20 p.1.5x80 - X B (...) <=
12	2.1579.949.0	1	ring 50.2x56.8x8 - X B (...) <=
13	0.035.1263.0	2	ring - X B (...) <=
14	0.011.2141.0/10	1	hub - FOR MODELS EQUIPPED WITH FRONT P.T.O. - X B (...) <=
15	0.011.2206.0/10	1	hub - X A => (...)

Section: ENGINE

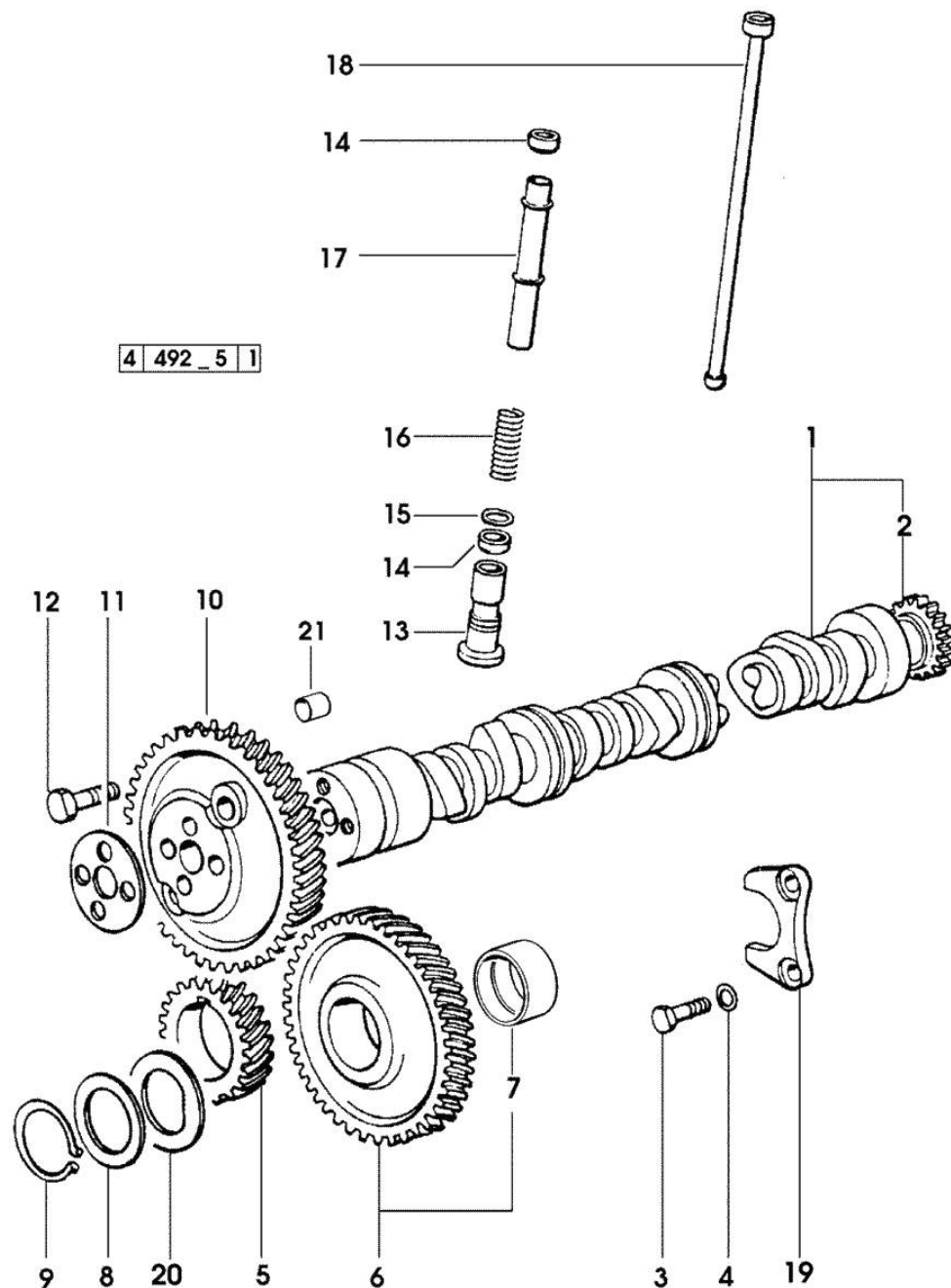
CAMSHAFT

Fig.	P/n	QTY	Name
------	-----	-----	------

Notes:
[SILVER 100.6]

1	0.010.4968.3/10	1	camshaft - EXPORT U.S.A.
1	0.075.1310.3/30	1	camshaft
2	0.065.1324.0/10	1	gear Z = 32
3	2.0312.206.2	2	screw m 8 p 1.25 x 20
4	2.1480.014.1	2	washer 8
5	0.007.1188.0/20	1	gear Z = 29
6	0.007.1177.3/10	1	gear z = 57 - WITH RED IDENTIFICATION STAMP
6	0.007.1178.3/10		gear z = 57 - WITH YELLOW IDENTIFICATION STAMP
6	0.007.1179.3/10		gear z = 57 - WITH GREEN IDENTIFICATION STAMP
7	2.1559.185.0/10	1	bushing
8	0.065.1352.0	1	shim
9	2.1410.016.1	1	circlip 40
10	0.065.1354.0/20	1	gear z=58
11	0.065.1350.0	1	small disc
12	2.0132.207.2	4	screw m 10 p.1 x 25
13	0.065.1330.0	12	tappets
14	2.1569.114.0/10	24	gasket 14x18.5x8
15	2.1599.437.0	12	shoulder ring
16	2.4019.300.1/10	12	spring 18.5x52x2
17	0.065.1332.0	12	sleeve
18	0.065.1331.2	12	rod
19	0.065.1353.0	1	small plate
20	0.065.1351.0	2	shoulder ring
21	2.1559.398.0	1	bushing 10.5x13x12

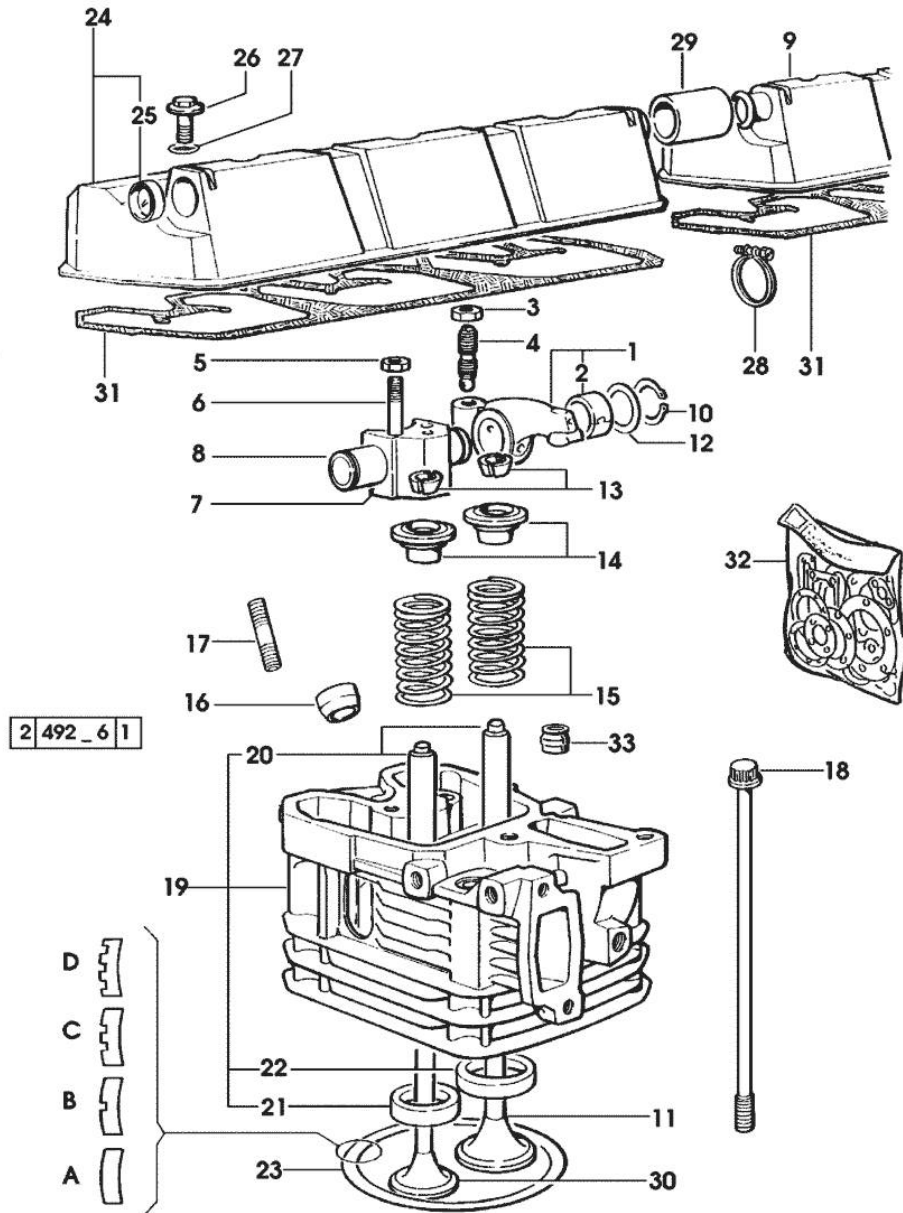
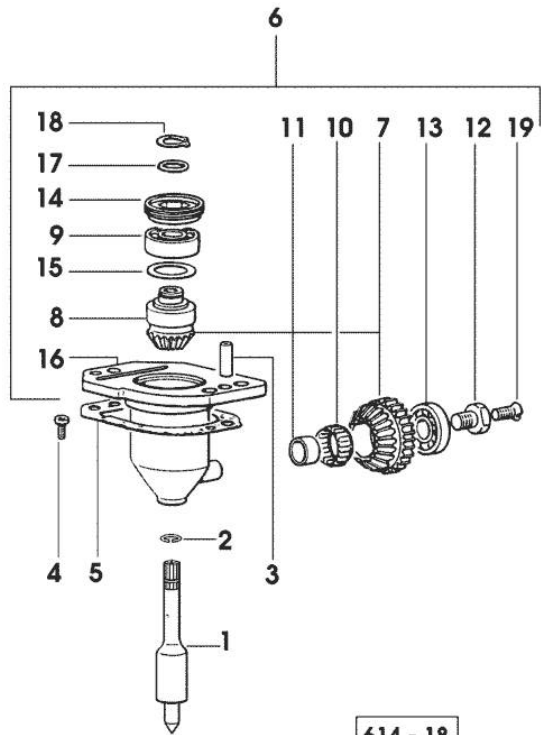
Section: ENGINE
CYLINDER HEAD

Fig.	P/n	QTY	Name
Notes: [SILVER 100.6]			
1	0.066.1432.3	12	rocker arm
2	2.1559.021.0/40	12	bushing 15x19x22
3	2.1011.405.2	12	nut m 8 p.1
4	0.021.1434.0	12	screw
5	2.1011.421.2	12	nut m 10 p.1.25
6	2.0432.163.7	12	stud bolt m 10 p.1.5 / p.1.25 x 45
7	0.066.1430.0/10	6	support
8	0.066.1431.0	6	pin
9	0.078.1450.3	1	cover
10	2.1410.055.1	12	circlip 19
11	0.010.6016.0	6	inlet valve mm 43.63 / Ø mm 9
12	2.1599.432.0	12	shoulder ring
13	0.074.1423.0	24	conical valve cotter
14	0.066.1425.0	12	cup
15	2.4019.287.0	12	spring
16	0.007.1122.0/10	6	bush L = mm 6.4
17	2.0432.161.7	6	stud bolt m 10 p.1.5 / p.1.25 x 40
18	0.065.1443.0/20	24	screw
19	0.007.1110.3/50	6	engine head
20	0.007.1779.0/10	12	valve guide
21	0.066.1427.0	6	valve seat
22	0.078.1426.0	6	valve seat
23	0.085.1450.0		head gasket mm 0.5 -A-
23	0.085.1451.0		head gasket mm 0.7 -B-
23	0.085.1452.0		head gasket mm 1.0 -C-
23	0.085.1453.0		head gasket mm 0.8 -D-
24	0.078.1440.3	1	cover
25	2.3171.008.4	1	plug 20
26	2.0399.130.2/10	6	screw m 8x36x44
27	2.1532.035.0	6	oil seal 14x1.78
28	2.6859.052.2	2	clamp
29	0.075.1452.0/10	1	sleeve
30	0.066.1421.0	6	exhaust valve
31	0.069.1450.0/30	2	tappet gasket
32	0.336.0057.6		gasket set
- FOR 1 CYLINDER VALVE GRINDING AND PISTON RINGS REPLACEMENT			
33	2.1519.117.0	12	special oil seal

Section: ENGINE
LUBRICATION

Fig.	P/n	QTY	Name
------	-----	-----	------

Notes:
 [SILVER 100.6]



614 - 18

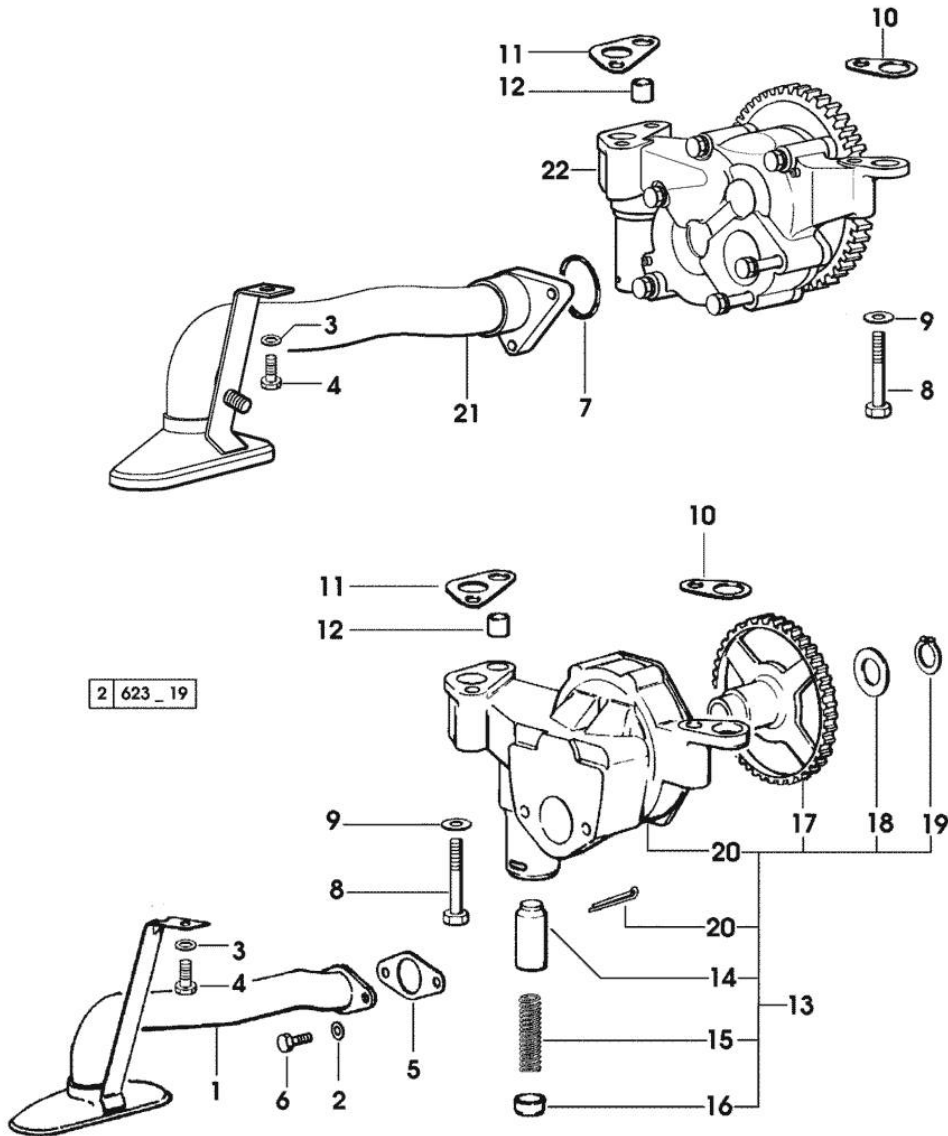
1	0.007.1036.0	1	shaft
2	2.1420.003.0	1	circlip a 10
3	2.1651.711.0	1	pin 8 x 14
4	2.0169.005.2	2	screw m 6 p.1 x 12
5	0.065.1560.0/20	1	gasket
6	0.075.1551.4/20	1	support
7	0.065.1558.6/10	1	bevel drive
8	0.065.1559.0	1	bush
9	2.2020.001.0	1	ball bearing 15 x 32 x 8.00
10	2.2725.016.0	1	roller cage 15 x 21 x 12
11	2.2680.020.0	1	ring 12 x 15 x 12
12	2.0399.128.2/10	1	screw m 8 p.1 x 8
13	2.2030.002.0	1	ball bearing 12 x 28 x 8
14	2.1219.025.2/10	1	ring nut m 36 p.1.5
15	2.1589.148.0	1	shoulder ring 28.2 x 31.8 x 0.5
15	2.1589.150.0	2	shoulder ring 28.2 x 31.8 x 0.1
15	2.1589.151.0	2	shoulder ring 28.2 x 31.8 x 0.15
16	0.075.1551.3/30	1	support
17	2.1589.146.0	2	shoulder ring 15.2 x 19 x 0.15
17	2.1589.147.0	2	shoulder ring 15.2 x 19 x 0.10
17	2.1589.153.0	1	shoulder ring 15.2 x 19 x 1.00
18	2.1410.057.1	1	circlip 15
19	2.0342.007.2	1	screw m 4 p.0.7x25

Section: ENGINE
LUBRICATION

Fig.	P/n	QTY	Name
------	-----	-----	------

Notes:
[SILVER 100.6]

1	0.007.1312.3	1	tube (...) <-
2	2.1470.004.2	2	lock washer 8
3	2.1470.004.2	1	lock washer 8
4	2.0112.205.2	1	screw m 8 p.1.25 x 16
5	0.007.0997.0	1	gasket (...) <-
6	2.0112.207.2	2	screw m 8 p 1.25 x 20
7	2.1539.153.0	1	oil seal 32.99x2.6 -> (...)
8	2.0112.322.2	3	screw m 10 p.1.5x65
9	2.1310.006.2	3	flat washer 10.5x21
10	0.007.0972.0	2	shim
11	0.007.0973.0	2	shim
12	0.007.0867.0	1	bush
13	0.000.0000.1		cannot be supplied * (...) <- - N.1 - 010.0194.4/30 - 011.0087.4 - 2.1539.153.0
14	0.007.1371.0	1	piston
15	0.007.1373.0	1	spring
16	0.007.1372.0	1	cup
17	0.007.1438.0/10	1	gear
18	0.007.1437.0	1	washer
19	0.007.1436.0	1	circlip
20	0.000.0000.1		cannot be supplied
21	0.011.0087.4	1	tube -> (...)
22	0.010.0194.4/30	1	oil pump -> (...) ☞ 0.010.0194.4/30 ☞ 01.00.58



Section: ENGINE

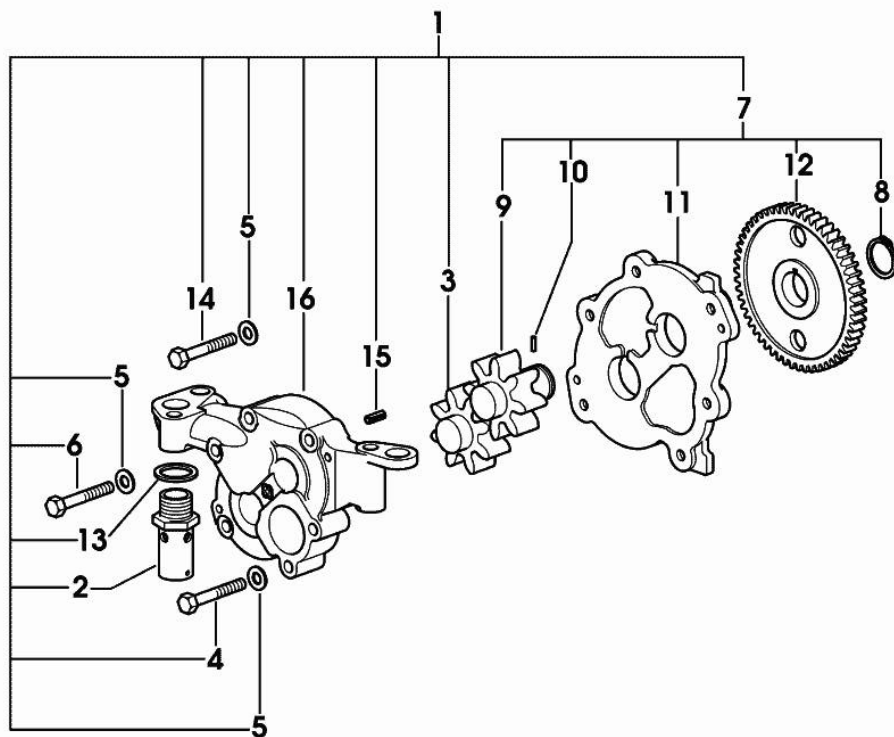
OIL PUMP

Fig.	P/n	QTY	Name
------	-----	-----	------

Notes:

[SILVER 100.6]

1	0.010.0194.4/30	1	oil pump ☞ 0.010.0194.4/30
2	0.007.0866.3/10	1	valve
3	0.010.1709.0	1	gear z=8
4	2.0112.220.2	2	screw m 8 p.1.25x55
5	2.1475.002.7	6	washer 8.4
6	2.0112.219.2	2	screw m 8 p.1.25x55
7	0.010.0195.3/20	1	cover
8	2.1410.064.7	1	circlip
9	0.010.1708.0/20	1	gear z=8
10	2.1651.204.0	1	pin 3x10
11	0.000.0000.1		cannot be supplied
12	0.000.0000.1		cannot be supplied
13	2.1560.020.0	1	copper gasket 24.3x32
14	2.0112.217.2	2	screw m 8 p.1.25 x 45
15	2.1630.608.0	2	pin 6x16
16	0.000.0000.1		cannot be supplied



0_010_0194_4_30

Section: ENGINE
LUBRICATION

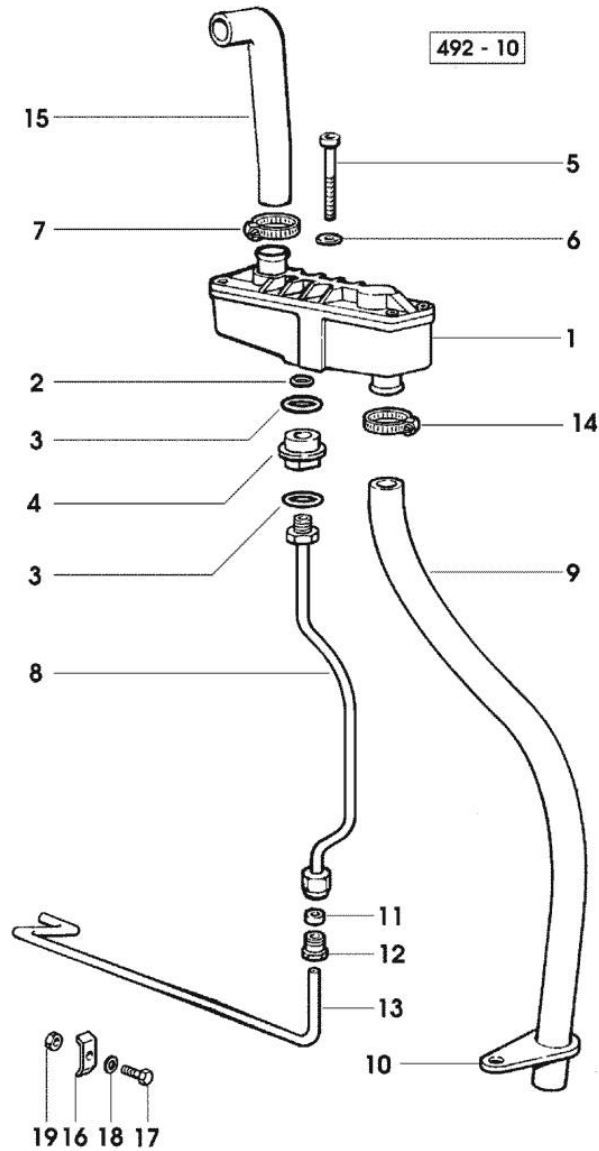


Fig.	P/n	QTY	Name
Notes:			
[SILVER 100.6]			
1	0.075.1557.4	1	sediment bowl ☞ 01.00.81
2	2.1560.008.0	1	gasket 12.2 x 18
3	2.1539.072.0	2	special oil seal 23.52 x 1.78
4	0.075.1553.0	1	bush
5	2.0312.221.2	2	screw m 8 p.1.25x75
6	2.1480.014.1	2	washer 8
7	2.6859.086.0	2	clamp
8	0.007.0861.0	1	tube
9	0.075.1554.0	1	tube
10	0.075.1151.0	1	bracket
11	2.3350.003.1	1	nosepiece 8
12	2.3339.418.1	1	pipe fitting m 12 p.1
13	0.007.0970.0	1	tube
14	2.6859.086.0	1	clamp
15	0.075.1453.0/10	1	tube
16	0.002.8816.0	1	small plate
17	2.0112.007.2	1	screw m 6 p.1 x 20
18	2.1310.002.2	1	flat washer 6.4x12.5
19	2.1011.103.2	1	nut m 6 p.1

LUBRICATION

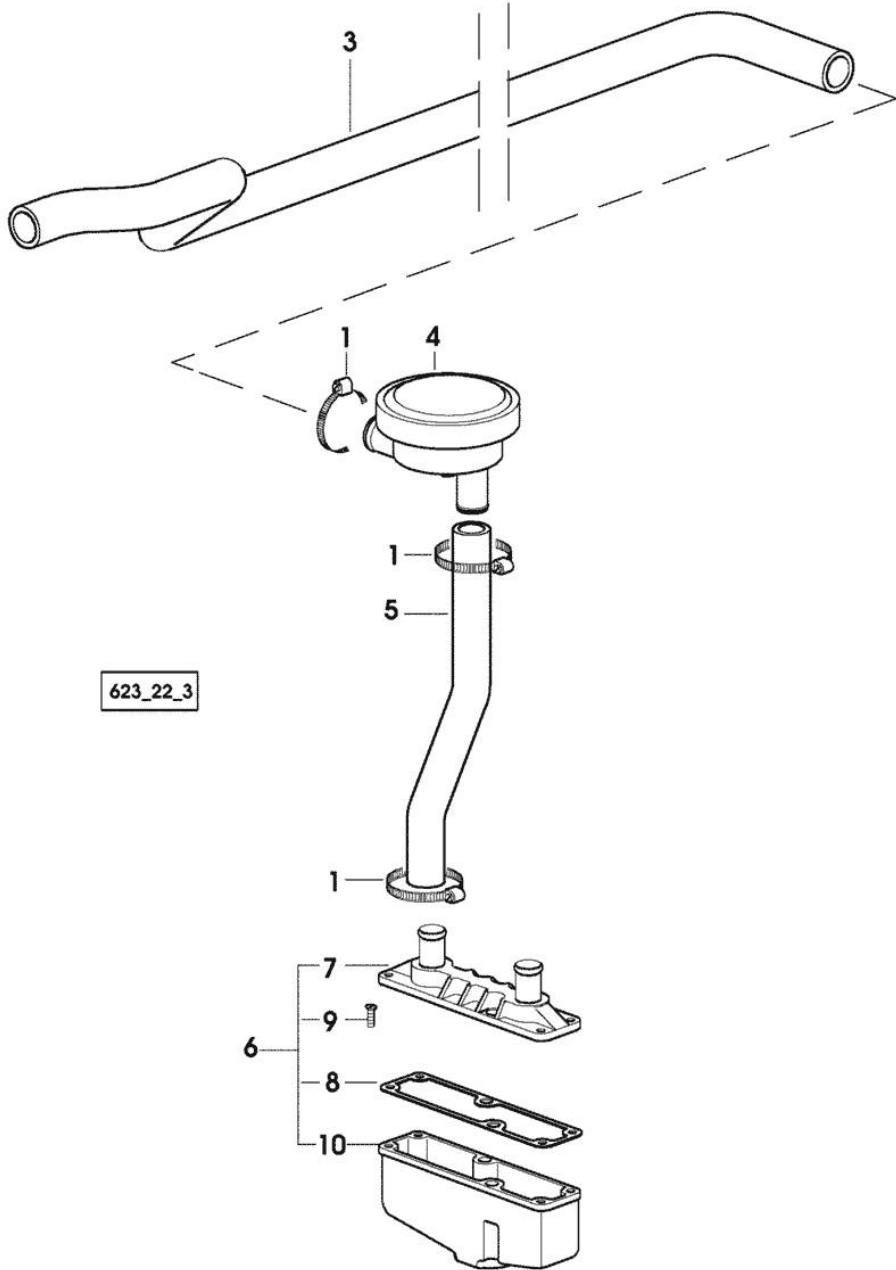


Fig.	P/n	QTY	Name
------	-----	-----	------

Notes:
 - EXPORT U.S.A. [SILVER 100.6]

1	2.6850.004.0	4	clamp
3	0.011.4127.0	1	tube
4	0.010.6507.0	1	valve
5	0.011.4130.0	1	tube
6	0.010.6512.4	1	sediment bowl
7	0.010.6513.3	1	cover
8	0.075.1559.0	1	gasket
9	2.0351.203.2	4	screw 3.5x9.5
10	0.010.6512.0	1	sediment bowl

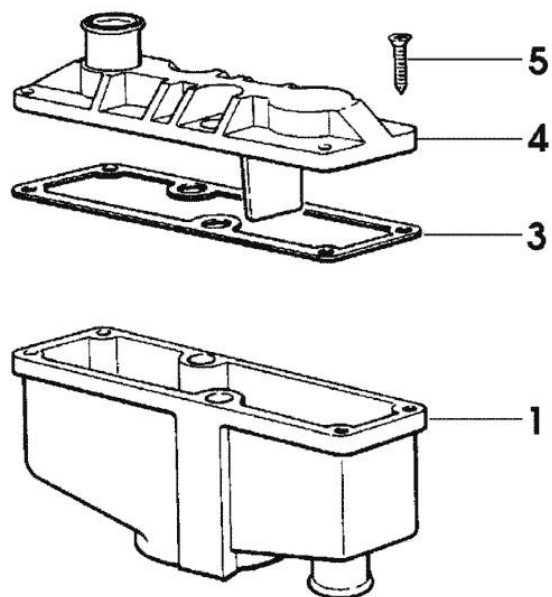
OIL VAPORS SEDIMENT BOWL PARTS

Fig.	P/n	QTY	Name
------	-----	-----	------

Notes:

[SILVER 100.6]

1	0.075.1558.3	1	old part number
3	0.075.1559.0	1	gasket
4	0.075.1557.3	1	old part number
5	2.0351.203.2	4	screw 3.5x9.5



075.1557.4

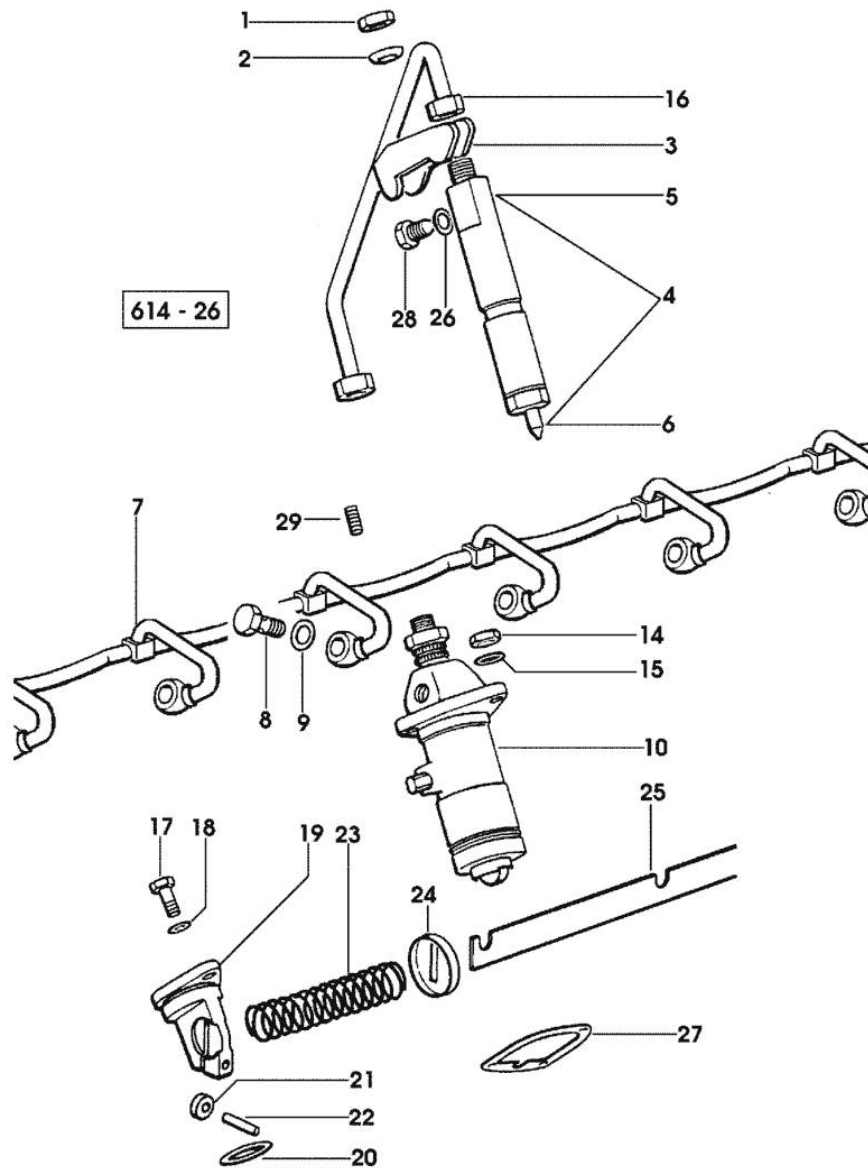
Section: ENGINE

FUEL SUPPLY SYSTEM

Fig.	P/n	QTY	Name
------	-----	-----	------

Notes:
[SILVER 100.6]

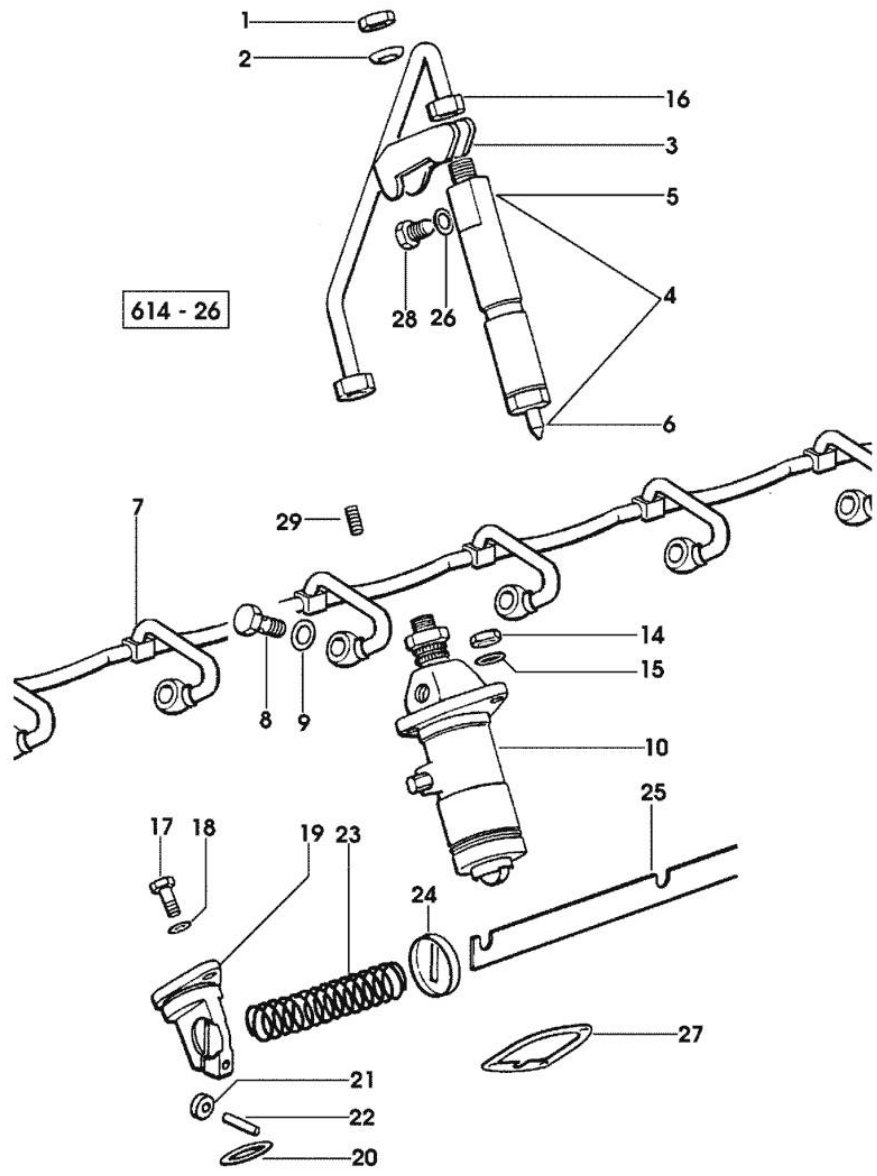
1	2.1011.421.2	6	nut m 10 p.1.25
2	2.1599.454.0	6	shoulder ring 10.5x17x7.5
3	0.011.5275.0/20	6	bracket
4	2.4719.200.0/10	6	injector assembly BOSCH
4	2.4719.320.0/10	6	injector assembly BOSCH - EXPORT U.S.A.
5	2.4719.190.0	6	nozzle holder BOSCH ☞ 2.4719.190.0 ☞ 01.00.129
6	2.4729.100.0	6	nozzle BOSCH
6	2.4729.170.0/10	6	nozzle BOSCH - EXPORT U.S.A.
7	0.007.1789.3/10	1	tube
8	2.3339.001.2	6	pipe union m 10 p.1x27
9	2.1560.005.0	12	copper gasket 10.2 x 14
10	2.4619.030.0/10	6	injector pump - 555 - BOSCH - EXPORT U.S.A. F 36/2 ☞ 2.4619.030.0/10
10	2.4619.050.0/30	6	injector pump - 542 - BOSCH F 36 - 36/1 ☞ 2.4619.050.0/30
14	2.1011.405.2	18	nut m 8 p.1
15	2.1599.458.0/10	18	shoulder ring 8.4x18x2
16	0.078.1650.3	6	tube
17	2.0112.207.2	3	screw m 8 p 1.25 x 20
18	2.1470.004.2	3	lock washer 8
19	0.065.1693.0/20	3	support
20	2.1530.072.0	3	oil seal 26.70x1.78
21	0.065.1660.0	2	roller
22	2.1652.507.0	2	pin 6x16
23	2.4019.314.1/20	1	spring 21.5x76x1
24	0.065.1659.0	1	stop
25	0.075.1613.3/10	1	rod
26	2.1560.001.0	6	gasket 6.2x10
27	0.065.1655.0/10	6	shim mm 0.1
27	0.065.1656.0/10	16	shim mm 0.20
28	2.3119.024.2	6	plug m 6
29	2.0512.102.7	6	screw m 6 p.1 x 8 (...) <-
29	2.3199.270.0	6	plug 5.9x7.8



FUEL SUPPLY SYSTEM

Fig.	P/n	QTY	Name
------	-----	-----	------

-> (...)



Section: ENGINE

FUEL SUPPLY SYSTEM

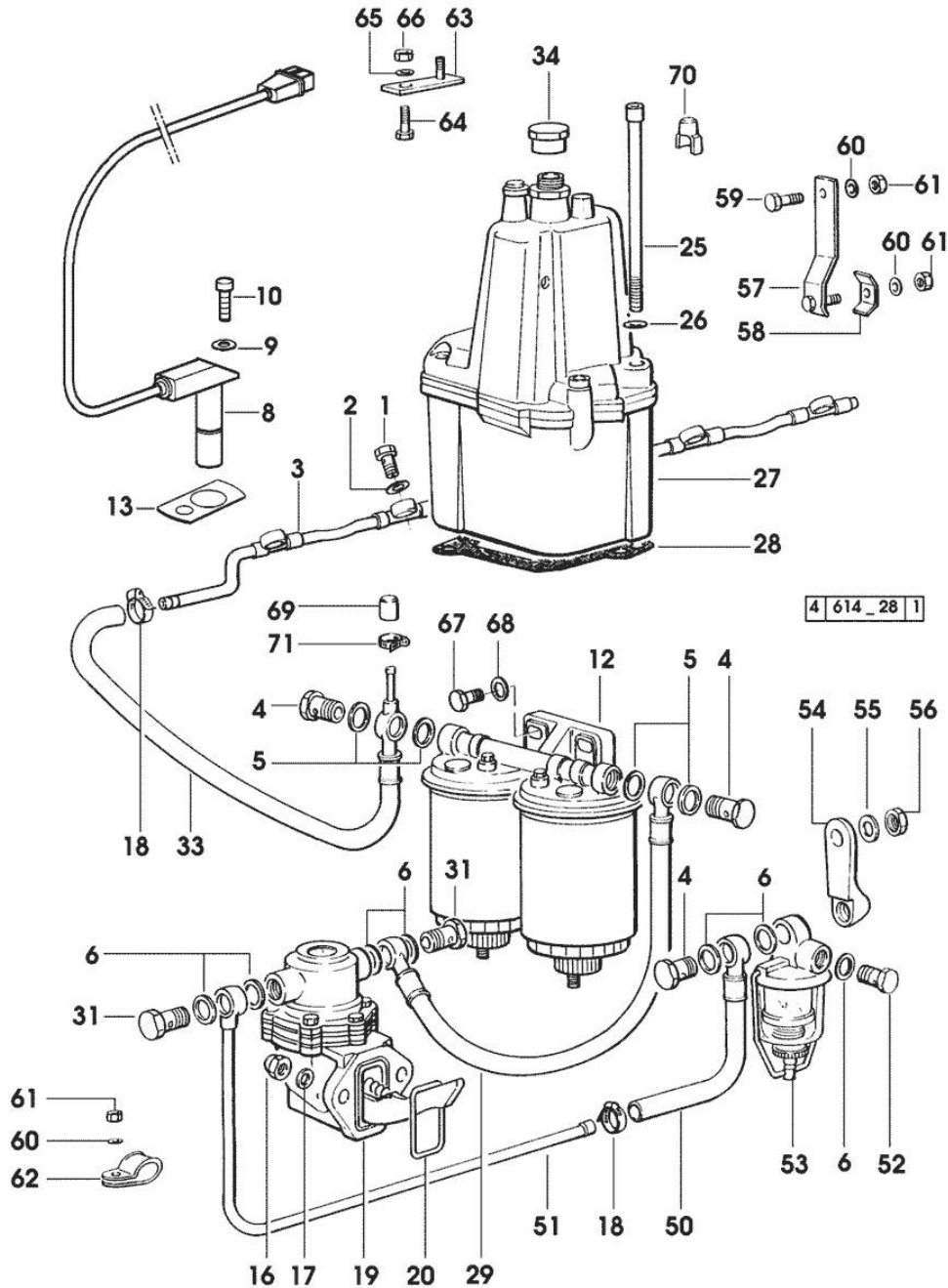


Fig.	P/n	QTY	Name
------	-----	-----	------

Notes:
[SILVER 100.6]

1	2.3339.118.1	6	pipe union m 12 p.1.5
2	2.1560.008.0	12	gasket 12.2 x 18
3	0.007.0091.3	1	tube
4	2.3332.004.1	3	pipe union m 14 p.1.5
5	2.1560.010.0	4	gasket 14.2 x 20
6	2.1561.007.0	8	copper gasket 14,8x22.2
8	2.7099.790.0	1	pick-up
9	2.1480.011.2	2	washer 5
10	2.0312.004.2	1	screw m 5 p.0.8 x 10
12	2.4319.240.0	1	fuel filter ☞ 2.4319.240.0 ☞ 01.00.135
13	0.011.1207.0	1	shim mm 0.20
16	2.1011.405.2	2	nut m 8 p.1
17	2.1470.004.2	2	lock washer 8
18	2.6850.003.0	2	clamp 16-25
19	2.4519.310.0	1	feed pump ☞ 2.4519.310.0 ☞ 01.00.140
20	2.1539.045.0	1	special oil seal 37.77x2.62
25	2.0399.103.2	2	screw m 8 p 1.25 x 135
26	2.1480.014.1	2	washer 8
27	0.085.1650.4/50	1	regulator F 32 - 33 ☞ 0.085.1650.4/50 ☞ 0.085.1650.4/50
28	0.009.3880.0/20	1	gasket
29	0.007.1733.3	1	tube
31	2.3339.357.2/10	2	pipe union m 14 p.1.5x28
33	0.007.1731.3/20	1	tube
34	2.3119.025.2	1	plug m 18 p.1.5
50	0.008.1528.3	1	tube L = mm 300
51	0.007.1732.3/20	1	tube
52	2.3339.040.2	1	pipe union m 14 p.1.5x45
53	2.4319.220.0	1	precleaner ☞ 2.4319.220.0 ☞ 01.00.141
54	0.008.1530.0	1	support
55	2.1470.007.2	1	lock washer 12
56	2.1011.107.2	1	nut m 12 p.1.75
57	0.009.3939.2	1	bracket

Section: ENGINE

FUEL SUPPLY SYSTEM

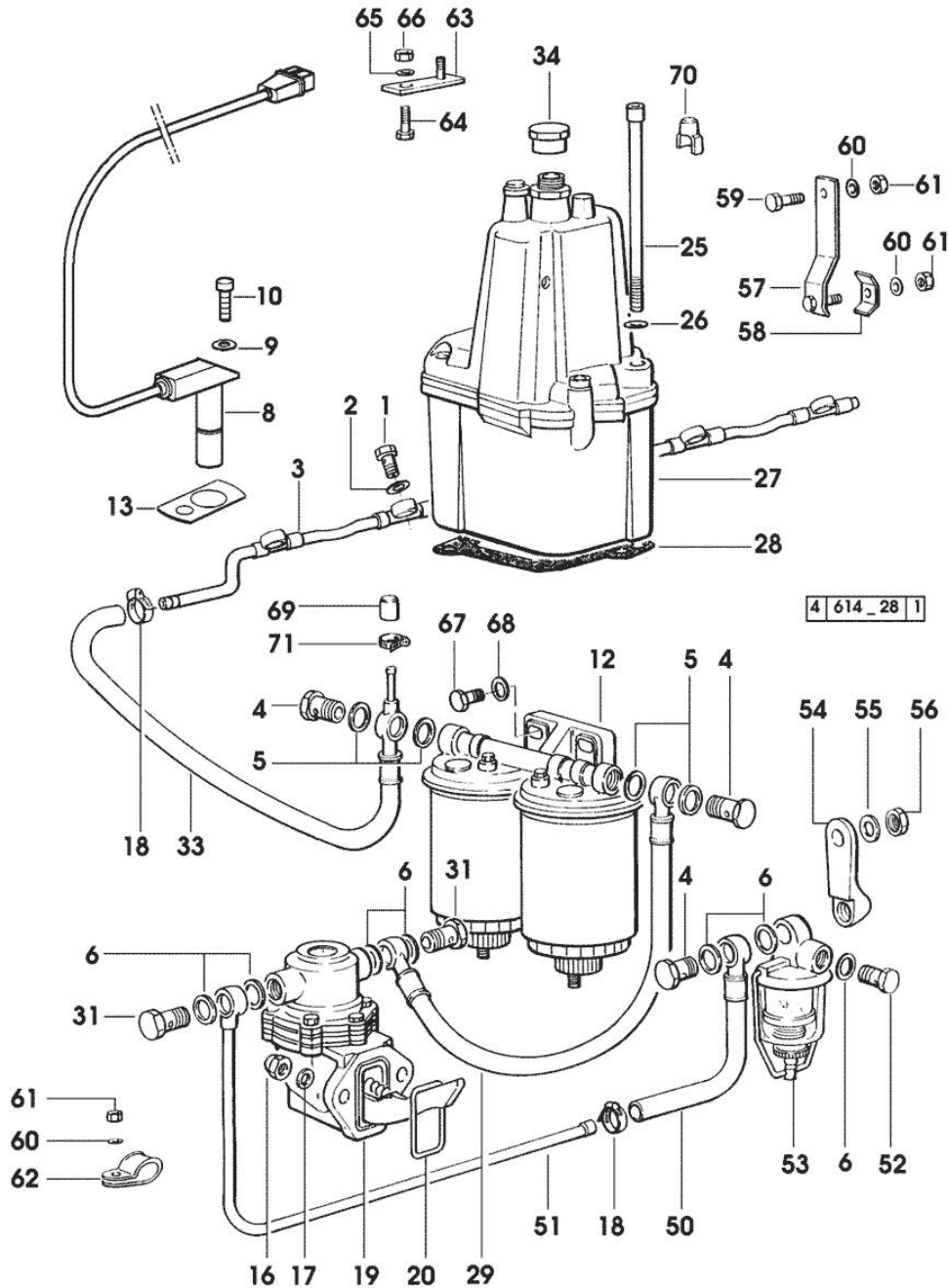


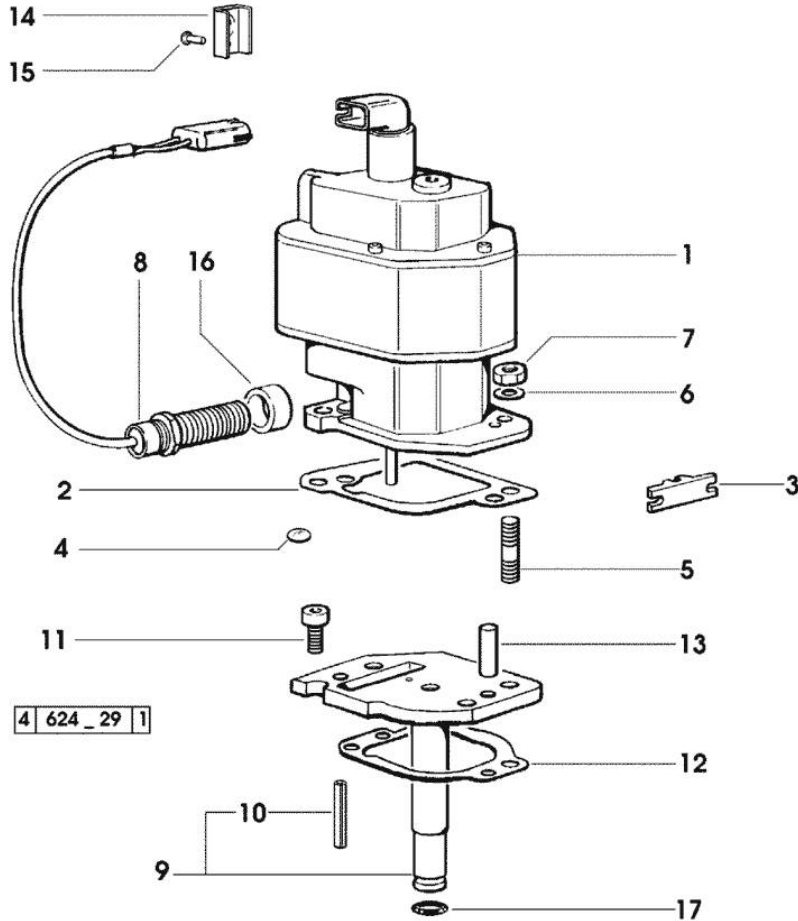
Fig.	P/n	QTY	Name
58	0.200.8152.0	1	small plate
59	2.0112.005.2	1	screw m 6 p.1 x 16
60	2.1470.002.2	4	lock washer 6
61	2.1011.103.2	4	nut m 6 p.1
62	2.6839.057.0	2	clamp 30/25
63	0.226.6658.2	2	small plate
64	2.0112.309.2	2	screw m 10 p.1.5 x 25
65	2.1470.006.2	2	lock washer 10
66	2.1011.106.2	2	nut m 10 p.1.5
67	2.0112.315.2	2	screw m 10 p.1.5 x 40
68	2.1310.006.2	4	flat washer 10.5x21
69	0.009.6721.0	1	plug
70	0.070.1655.0	1	cap
71	2.6850.002.0	1	clamp

FUEL SUPPLY ELECTRONIC GOVERNOR

Fig.	P/n	QTY	Name
------	-----	-----	------

Notes:

2299 <= X SILVER 80 3775 <= X SILVER 90 2082 <= X SILVER 100.4 3974 <= X SILVER 100.6 [SILVER 100.6]



1	0.007.0992.4/60	1	actuator 12V * (...) <- 010.6803.3
2	0.009.3880.0/20	1	gasket
3	0.007.0870.0	1	small plate
4	2.3170.003.1	1	expansion plug 10
5	2.0432.007.2	2	stud bolt m 8 p.1.25 / p.1 x 30
6	2.1475.202.2	2	spring washer 8.4 x 16
7	2.1011.405.2	2	nut m 8 p.1
8	0.007.0740.0/40	1	pick-up
9	0.007.1199.3/20	1	flange - X SILVER 100.6
10	2.1630.415.0	1	pin 4 x 40
11	2.0169.005.2	2	screw m 6 p.1 x 12 - X SILVER 100.6
12	0.065.1560.0/20	1	gasket - X SILVER 100.6
13	2.1651.711.0	1	pin 8 x 14 - X SILVER 100.6
14	0.007.1356.0	1	cover (...) <=
15	2.1830.008.0	1	rivet 2.5x5
16	2.1579.205.2	1	spacer 17x22x14
17	2.1539.087.0	1	special oil seal 11.91 x 2.62 - X SILVER 100.6

Thank you so much for reading.
Please click the “Buy Now!”
button below to download the
complete manual.



After you pay.

You can download the most
perfect and complete manual in
the world immediately.

Our support email:

ebooklibonline@outlook.com