

Section: ENGINE
CYLINDER BLOCK 3338 <--

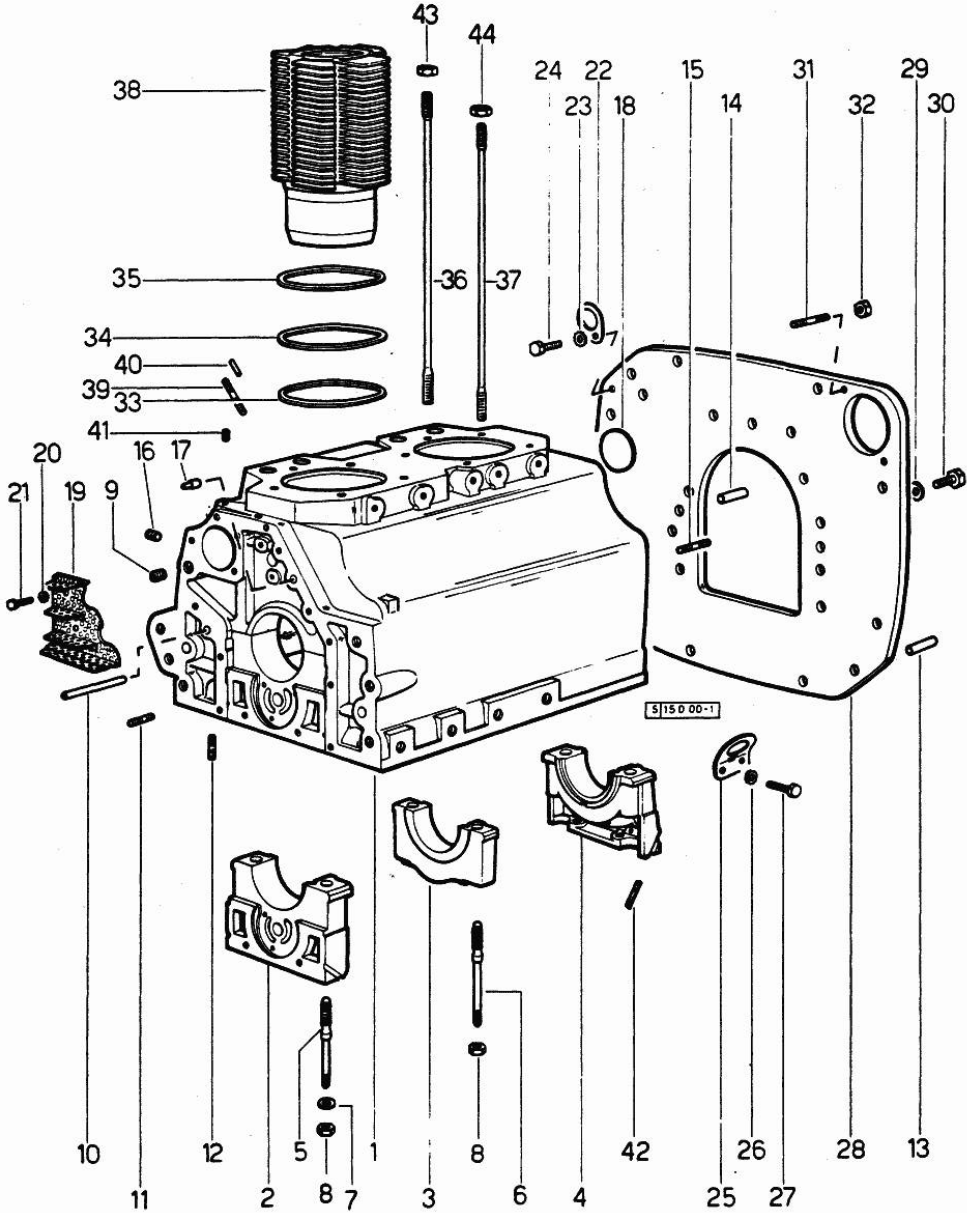


Fig.	P/n	QTY	Name
Notes: [SIRENETTA]			
0	0.027.0050.6	1	gasket set FOR ENGINE ASSEMBLY
1	0.027.1151.4/10	1	old part number
2	0.029.1112.0	1	support
3	0.029.1113.0	1	support
4	0.029.1116.0	1	support
5	0.021.1157.0	4	stud bolt
6	0.029.1117.0	2	stud bolt
7	2.1599.144.0	6	shoulder
8	2.1019.026.1	6	special nut m 12 p.1.5
9	2.3130.002.1	2	plug 1/4" gas
10	2.1699.116.0	1	pin
11	2.0432.018.1	6	stud bolt m 8 p.1.25 / p.1 x 65
12	2.0432.001.1	18	stud bolt m 14 p.2-1.5x35
13	2.1652.911.0	2	cylindrical plug 12x25
14	2.1653.708.0	3	pin 8x18
15	2.0432.155.1	9	stud bolt m 10 p.1.5 / p. 1.25 x 25
16	2.3139.001.0	2	plug m 12 p.1.75
17	2.1699.021.0	1	pin 7.8x8x20
18	2.3170.022.1	1	expansion plug 60
19	0.029.1155.2	1	filter
20	002.5937.3/30	2	rocker arm
20	2.1470.002.2	2	lock washer 6
21	2.0112.003.2	1	screw m 6 p.1 x 12
22	0.002.5936.3/40	1	rocker arm
22	0.002.5952.0	1	old part number
23	2.1470.006.2	1	lock washer 10
24	2.0112.309.2	1	screw m 10 p.1.5 x 25
25	0.027.1157.0/10	1	old part number
26	2.1470.006.2	1	lock washer 10
27	2.0112.207.2	1	screw m 8 p 1.25 x 20
28	0.027.1130.0/20	1	flange
29	2.1470.008.2	11	lock washer 14
30	2.0112.511.1	11	screw m 14 p.2 x 30
31	2.0439.033.1	2	stud bolt m 10x28
32	2.1011.106.2	2	nut m 10 p.1.5
33	2.1589.034.0	2	shoulder ring
34	2.1589.033.0	2	shoulder ring
35	2.1569.053.0	2	gasket
36	0.029.1123.0	8	stud bolt m 12 p.1.5x265
37	0.029.1122.0	2	stud bolt

Section: ENGINE
CYLINDER BLOCK 3338 <--

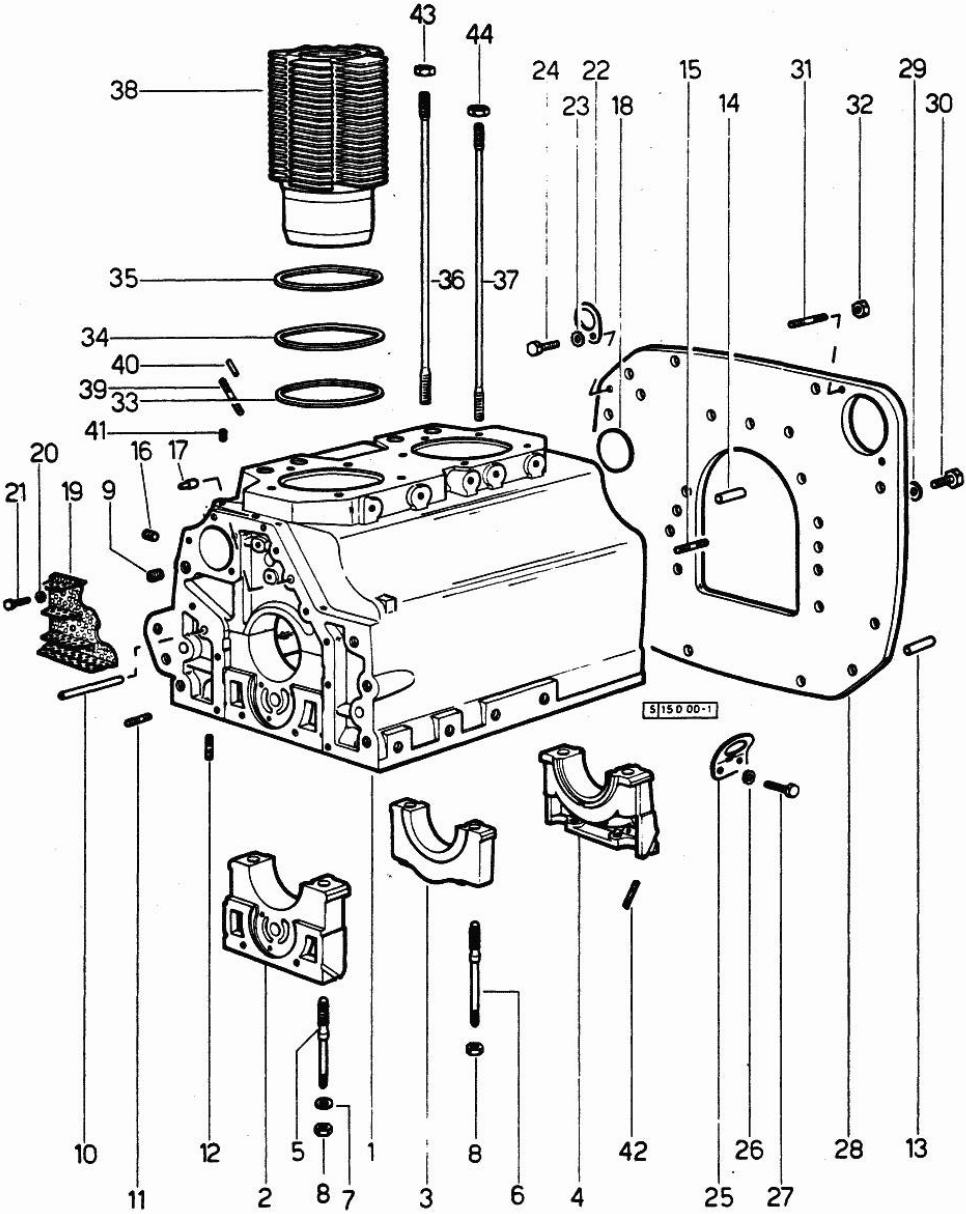


Fig.	P/n	QTY	Name
38	0.029.1120.0	2	engine cylinder
39	2.0432.159.1	2	stud bolt m 10 x 35
40	2.1653.708.0	1	pin 8x18
41	2.3139.001.1	1	plug
42	0.029.1154.0	4	gasket
43	2.1019.025.1	8	special nut
44	2.1099.028.1	2	special nut

Section: ENGINE
CYLINDER BLOCK --> 3339

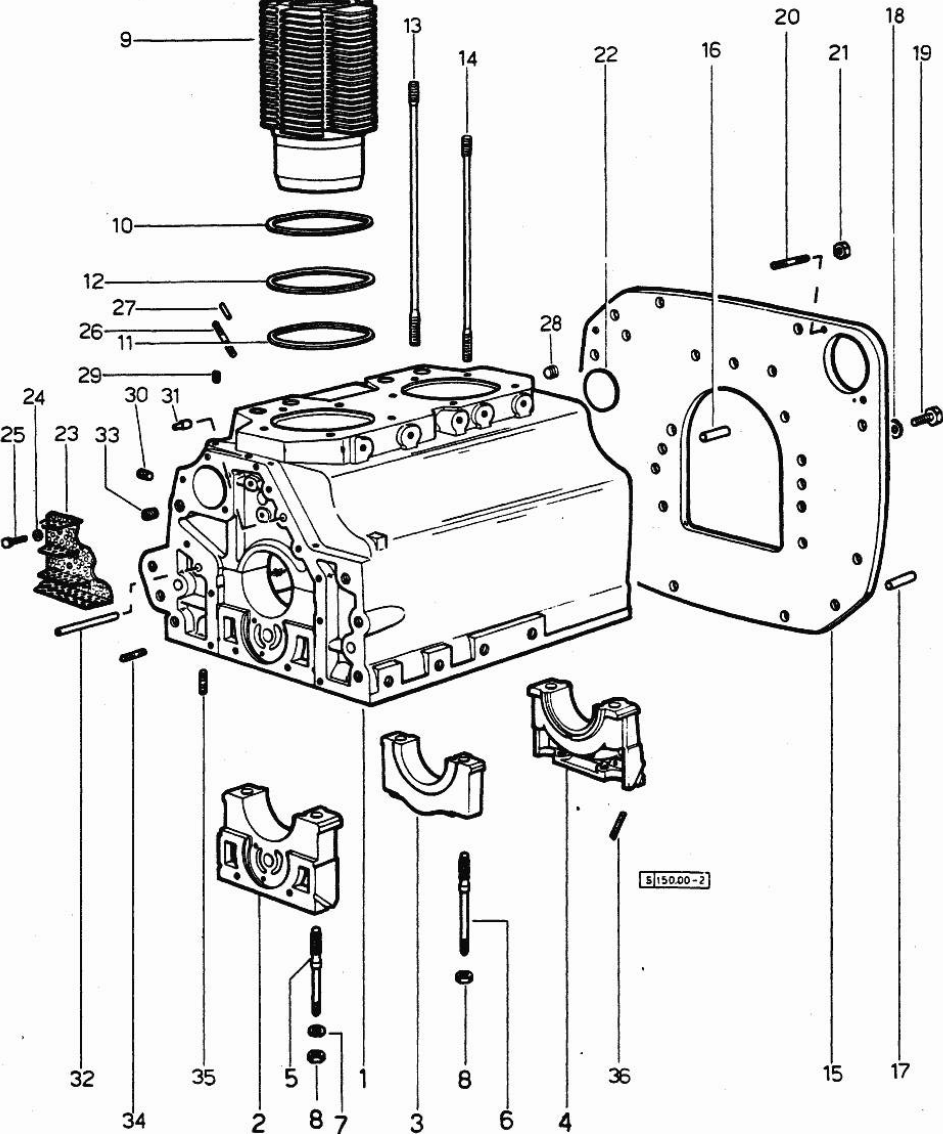


Fig.	P/n	QTY	Name
Notes: [SIRENETTA]			
0	0.034.0050.6/10	1	gasket set FOR ENGINE ASSEMBLY
1	0.034.1110.4/30	1	crankcase
2	0.029.1112.0	1	support
3	0.029.1113.0	1	support
4	0.029.1116.0	1	support
5	0.021.1157.0	4	stud bolt
6	0.029.1117.0	2	stud bolt
7	2.1599.144.0	6	shoulder
8	2.1019.026.1	6	special nut m 12 p.1.5
9	0.034.1120.0/10	2	engine cylinder
9	0.036.1120.0	2	cylinder 3518 <= - => 3542 - 3631 <= => 3519 - 3541 <= - => 3632
10	2.1589.036.0	2	shim
11	2.1569.055.0	2	shim
12	2.1589.037.0	2	shim
13	0.029.1123.0	8	stud bolt m 12 p.1.5x265 3518 <=
13	0.039.1122.0	8	stud bolt m 12 p.1.5x310 => 3519
14	0.034.1122.0	2	stud bolt 3518 <=
14	0.037.1122.0	2	stud bolt => 3519
15	0.027.1130.0/20	1	flange
16	2.1653.708.0	2	pin 8x18
17	2.1652.911.0	2	cylindrical plug 12x25
18	2.1470.008.2	11	lock washer 14
19	2.0112.511.1	11	screw m 14 p.2 x 30
20	2.0439.033.1	2	stud bolt m 10x28
21	2.1011.106.2	2	nut m 10 p.1.5
22	2.3170.022.1	1	expansion plug 60
23	0.029.1155.2/10	1	plate
24	2.1470.002.2	2	lock washer 6
25	2.0112.003.2	2	screw m 6 p.1 x 12
26	2.0432.159.1	2	stud bolt m 10 x 35
27	2.1653.708.0	2	pin 8x18
28	2.3130.002.1	2	plug 1/4" gas
29	2.3130.001.1	2	plug 1/8" gas
30	2.3139.001.0	2	plug m 12 p.1.75

CYLINDER BLOCK -> 3339

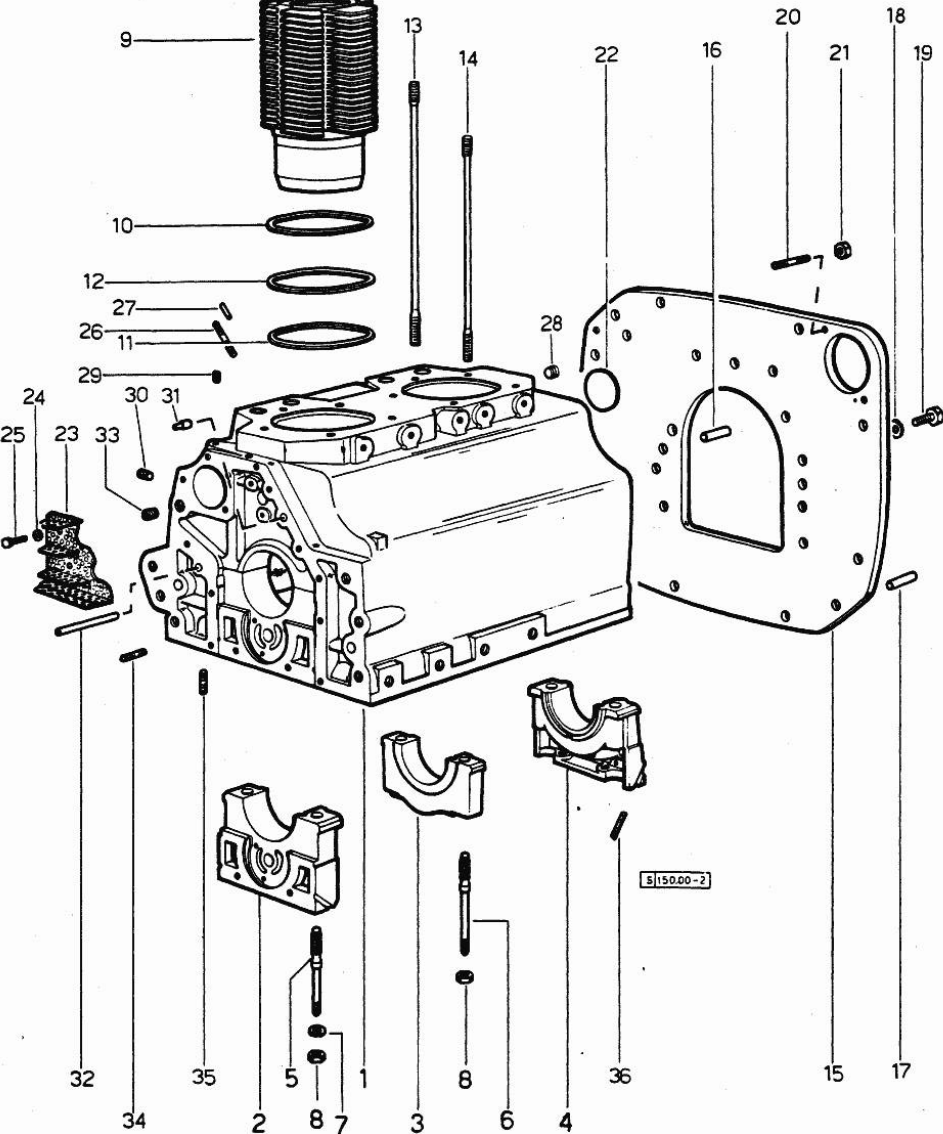


Fig.	P/n	QTY	Name
31	2.1699.021.0	1	pin 7.8x8x20
32	2.1699.116.0	1	pin
33	2.3130.002.1	2	plug 1/4" gas
34	2.0432.018.1	5	stud bolt m 8 p.1.25 / p.1 x 65
35	2.0432.003.1	18	stud bolt m 8 p.1.25 / p.1 x 20
36	0.029.1154.0	4	gasket

Section: ENGINE
TIMING CASE

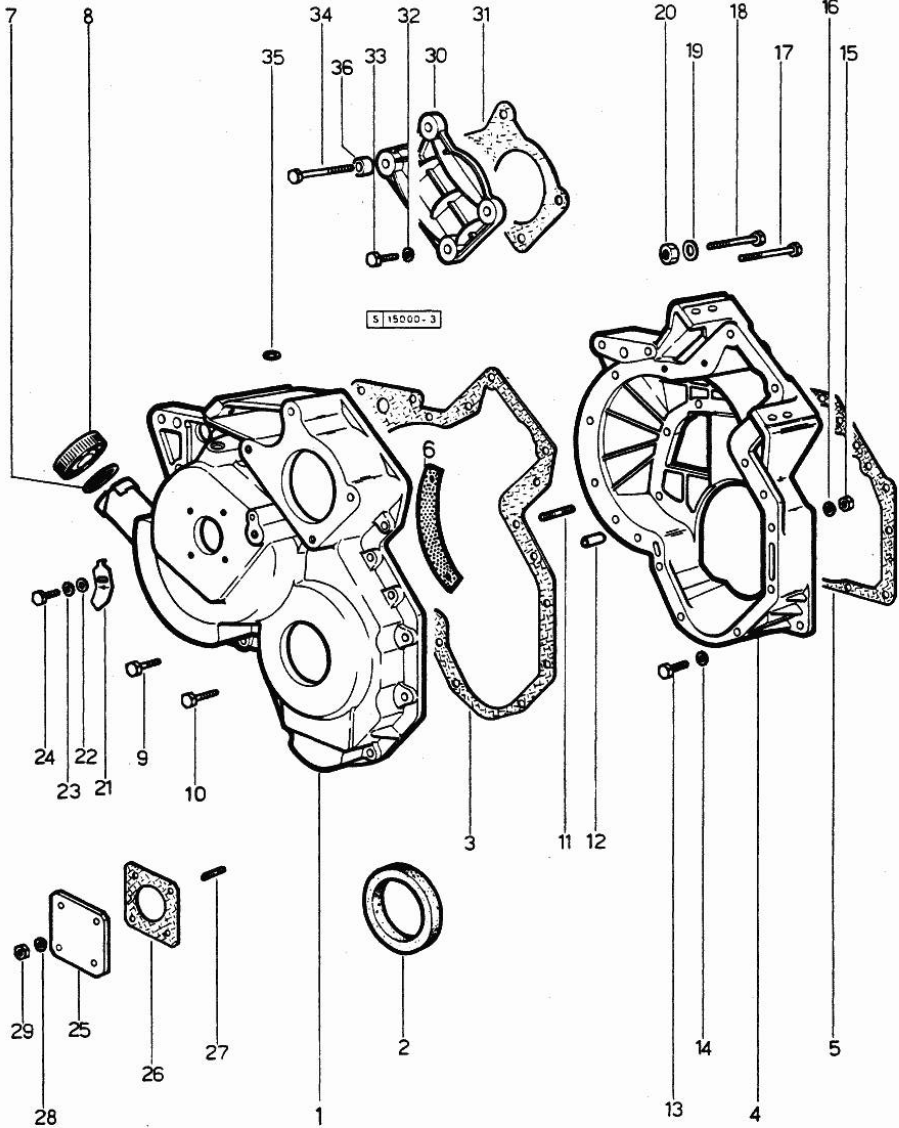


Fig.	P/n	QTY	Name
------	-----	-----	------

Notes:
[SIRENETTA]

1	0.027.1155.0/30	1	governor housing
2	2.1519.010.0	1	special oil seal 58x80x10
3	0.027.1156.0	1	gasket
4	0.027.1154.0/30	1	flange
5	0.029.1153.0/10	1	gasket
6	0.027.1152.0/20	1	small plate
7	2.1569.048.0	1	gasket
8	0.022.1135.3	1	plug
9	2.0122.222.2	1	screw
10	2.0122.213.2	4	screw m 8 p.1x35
11	2.0432.005.1	3	stud bolt m 8 p.1.25 / p.1 x 25
12	2.1652.711.0	1	cylindrical plug 8x25
13	2.0112.207.1	8	screw m 8 p 1.25 x 20
14	2.1480.014.1	8	washer 8
15	2.1011.405.2	15	nut m 8 p.1
16	2.1480.014.1	15	washer 8
17	2.0122.225.2	1	screw m 8 p.1x80
18	2.0122.224.1	1	screw
19	2.1480.014.1	2	washer 8
20	2.1011.405.2	2	nut m 8 p.1
21	0.027.1150.0/10	1	index
22	2.1310.003.2	1	flat washer 7.4x14
23	2.1470.004.2	1	lock washer 8
24	2.0112.103.1	1	screw m 7 p.1.x12
24	2.0112.204.2	1	screw m 8 p.1.25x14
25	0.027.1153.0	1	flange
26	0.026.1150.0	1	gasket
27	2.0439.055.1	4	stud bolt m 6 p.1 x 18
28	2.1480.012.1	4	washer 6, d128
29	2.1011.103.1	4	nut
30	0.029.1163.0	1	small cover
31	0.054.1155.0	1	gasket
32	2.1480.014.1	2	washer 8
33	2.0112.211.2	2	screw m 8 p.1.25 x 30
34	2.0122.233.2	2	screw
35	2.1530.028.0	1	oil seal 11.91 x 2.62
36	2.1579.191.0	2	spacer 8.5 x 18 x 20

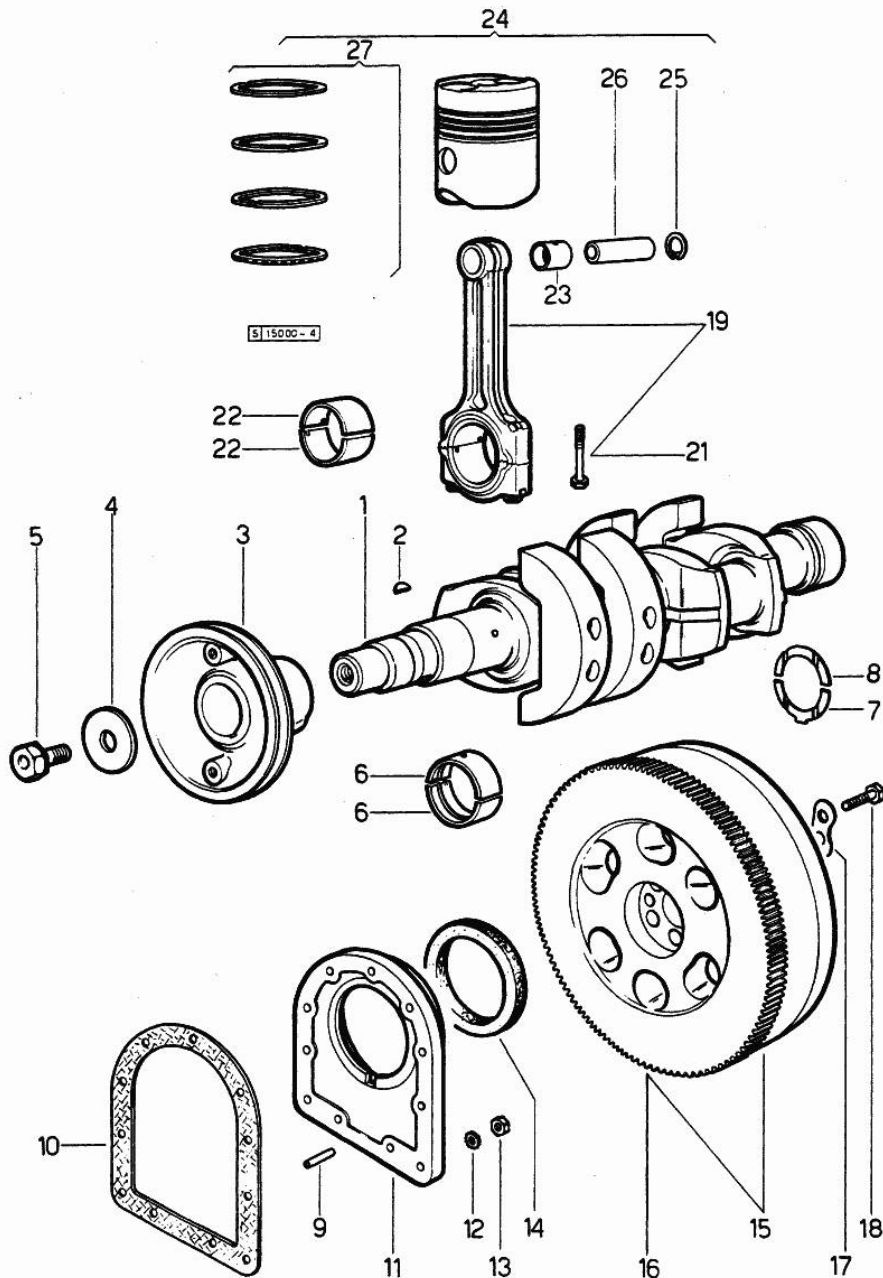
Section: ENGINE

CRANKSHAFT 3338 <--

Fig.	P/n	QTY	Name
------	-----	-----	------

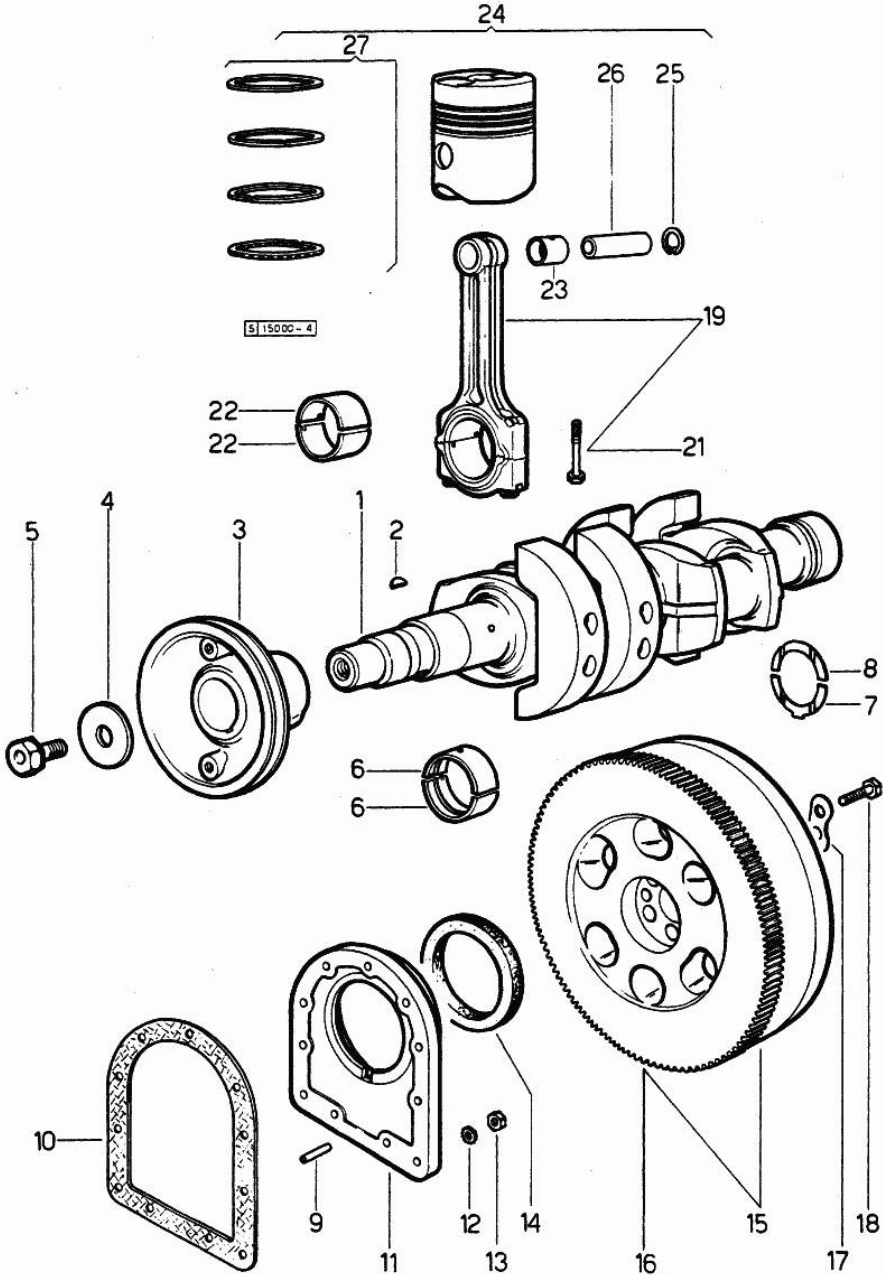
Notes:
[SIRENETTA]

1	0.027.1210.4/20	1	crankshaft
2	2.1799.002.0	1	stick 10x13
3	0.027.1244.0/20	1	old part number
4	0.001.6020.0	1	shoulder
5	2.0129.032.2	1	screw m 24 p.2x45
6	0.029.0066.0		main half bushing - mm 1.00
6	0.029.1215.0/10	6	main half bushing
6	0.029.1215.7		main half bushing - mm 0.25
6	0.029.1215.8		main half bushing - mm 0.50
6	0.029.1215.9		main half bushing - mm 0.75
7	0.001.4196.0	2	shoulder ring
7	0.001.4547.0		shoulder ring + mm 0.05
7	0.001.4548.0		shoulder ring + mm 0.10
7	0.001.4549.0		shoulder ring + mm 0.15
8	0.001.4197.0	2	shoulder ring
8	0.001.4544.0		shoulder ring + mm 0.05
8	0.001.4545.0		shoulder ring + mm 0.10
8	0.001.4546.0		shoulder ring + mm 0.15
9	2.1652.915.0	2	cylindrical plug 12x35
10	0.029.1250.0	1	gasket
11	0.029.1240.0	1	flange
12	2.1480.015.1	9	washer 10
13	2.1011.421.2	9	nut m 10 p.1.25
14	2.1519.009.0	1	special oil seal
15	0.027.1241.3	1	flywheel
16	0.029.1242.0	1	crown wheel Z = 120, mm 20
17	2.1379.006.0	3	lock-tab 15x15x36,5
18	2.0122.515.7	6	screw
19	0.029.1220.3	2	engine connecting rod
21	0.002.3910.0	4	screw
22	0.021.0068.0		con.rod half bushing
22	0.021.1225.0	4	con.rod half bushing STANDARD
22	0.021.1225.7		con.rod half bushing - mm 0.25
22	0.021.1225.8		con.rod half bushing - mm 0.50
22	0.021.1225.9		con.rod half bushing - mm 0.75
23	0.002.4168.0	2	bearing
24	0.029.0060.6	2	complete piston STANDARD
24	0.029.0061.6		complete piston + mm 0.5
24	0.029.0062.6		complete piston + mm 1.0
25	2.1411.014.1	4	circlip 35
26	0.002.4167.0	2	piston pin



Section: ENGINE
CRANKSHAFT 3338 <--

Fig.	P/n	QTY	Name
27	0.029.0052.6	2	piston ring set
27	0.029.0053.6		piston ring set + mm 0.5
27	0.029.0054.6		piston ring set + mm 1.0

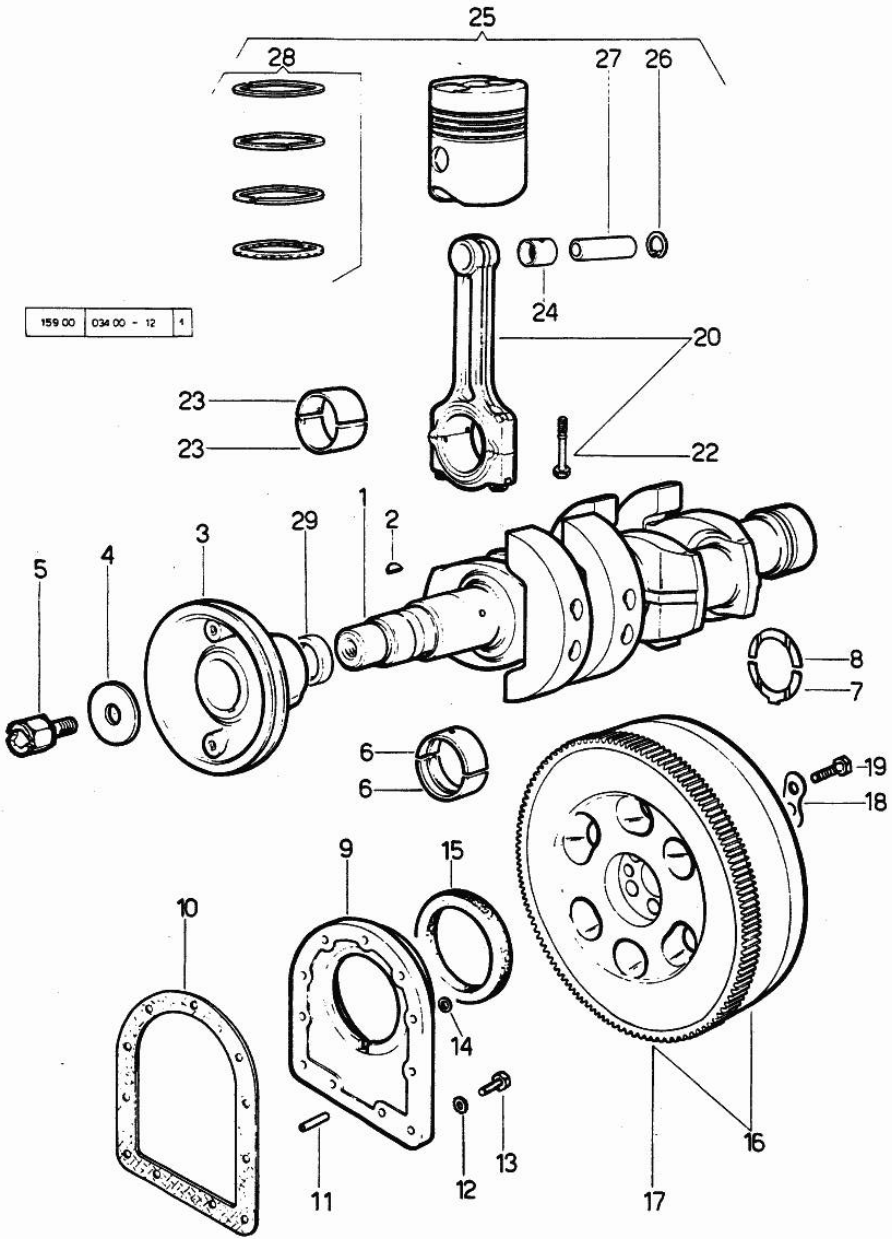


Section: ENGINE
CRANKSHAFT --> 3339

Fig.	P/n	QTY	Name
------	-----	-----	------

Notes:
[SIRENETTA]

1	0.027.1210.4/30	1	crankshaft => 3819
1	0.027.1210.6	1	crankshaft 3818 <=
2	2.1799.002.0	1	stick 10x13
3	0.027.1244.0/20	1	old part number
4	0.001.6020.0	1	shoulder
5	2.0129.032.2	1	screw m 24 p.2x45
6	0.029.0066.0		main half bushing - mm 1.00
6	0.029.1215.0	6	main half bushing
6	0.029.1215.7		main half bushing - mm 0.25
6	0.029.1215.8		main half bushing - mm 0.50
6	0.029.1215.9		main half bushing - mm 0.75
7	0.001.4196.0	2	shoulder ring
7	0.001.4547.0		shoulder ring + mm 0.05
7	0.001.4548.0		shoulder ring + mm 0.10
7	0.001.4549.0		shoulder ring + mm 0.15
8	0.001.4197.0	2	shoulder ring
8	0.001.4544.0		shoulder ring + mm 0.05
8	0.001.4545.0		shoulder ring + mm 0.10
8	0.001.4546.0		shoulder ring + mm 0.15
9	0.029.1240.0	1	flange
10	0.029.1250.0	1	gasket
11	2.1652.915.0	2	cylindrical plug 12x35
12	2.1480.015.1	6	washer 10
13	2.0112.309.2	9	screw m 10 p.1.5 x 25
14	2.1560.006.0	3	gasket 10.2 x 16
15	2.1519.009.0	1	special oil seal
16	0.027.1241.3	1	flywheel
17	0.029.1242.0	1	crown wheel Z = 120, mm 20
17	0.038.1242.0	1	crown wheel Z = 120, mm 15
18	2.1379.006.0	3	lock-tab 15x15x36,5
19	2.0122.515.7	6	screw
20	0.029.1220.3	2	engine connecting rod 3818 <=
20	0.039.1220.3/10	2	engine connecting rod => 3819
22	0.002.3910.0	4	screw 3818 <=
22	0.039.1250.0	4	screw m 14 p.1.5x63 => 3819



Section: ENGINE
CRANKSHAFT --> 3339

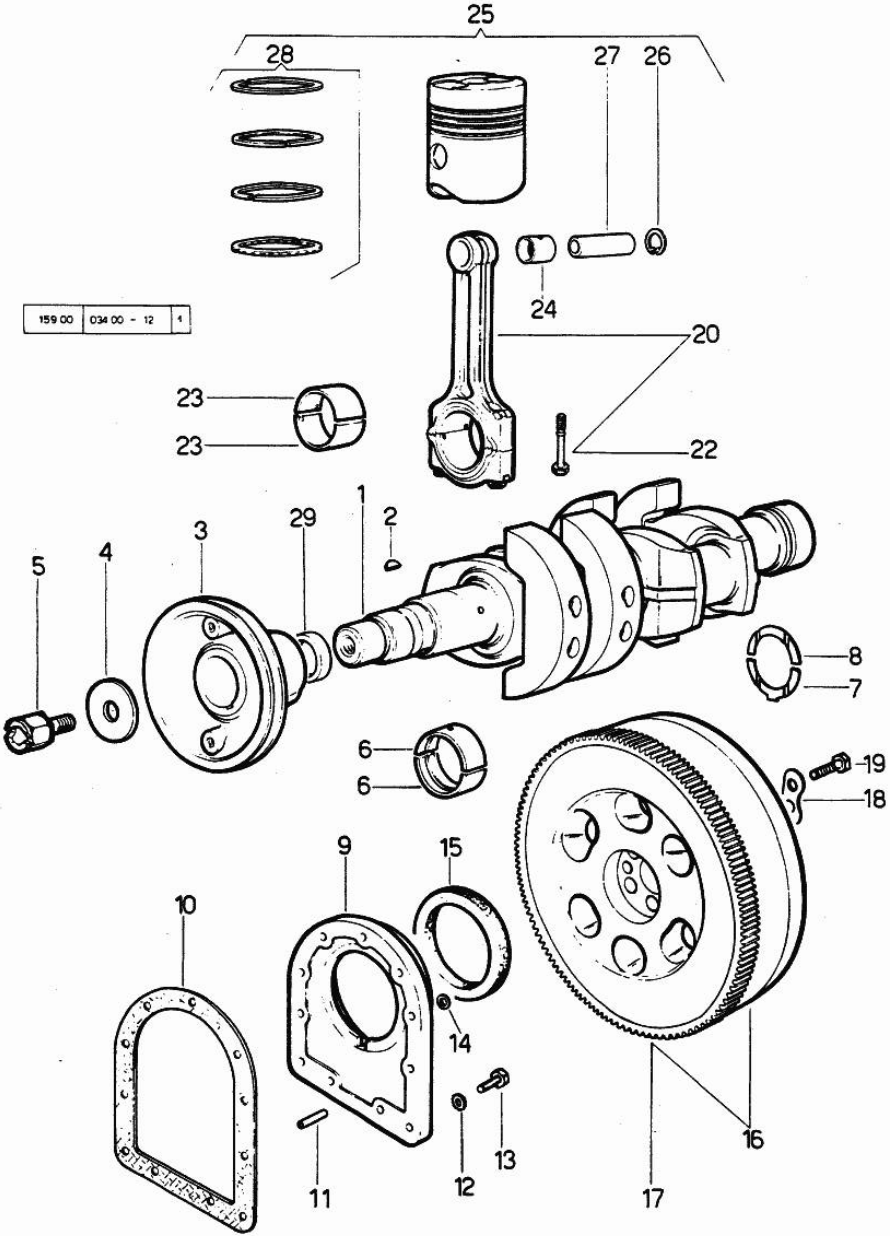
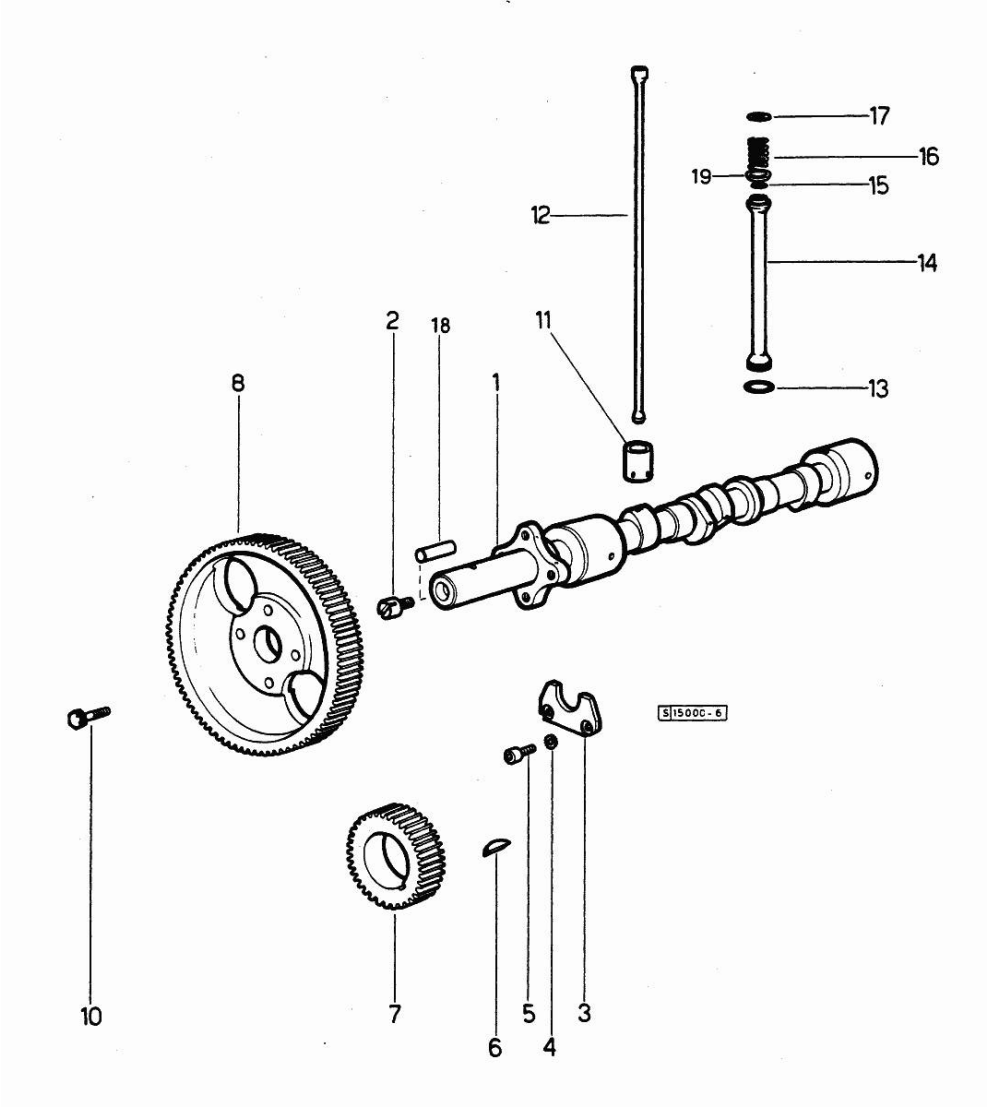


Fig.	P/n	QTY	Name
23	0.021.0068.0		con.rod half bushing
23	0.021.1225.0	4	con.rod half bushing STANDARD 3818 <=
23	0.021.1225.7		con.rod half bushing - mm 0.25
23	0.021.1225.8		con.rod half bushing - mm 0.50
23	0.021.1225.9		con.rod half bushing - mm 0.75
23	0.039.0068.0		con.rod half bushing - mm 1.016
23	0.039.1225.0	4	con.rod half bushing
23	0.039.1225.7		con.rod half bushing -mm 0.254
23	0.039.1225.8		con.rod half bushing -mm 0.508
23	0.039.1225.9		con.rod half bushing -mm 0.762
24	0.002.4168.0	2	bearing
25	0.036.0060.6	2	complete piston
25	0.036.0061.6		complete piston + mm 0.5
25	0.036.0062.6		complete piston + mm 1.00
26	2.1411.014.1	4	circlip 35
27	0.002.4167.0	2	piston pin
28	0.034.0052.6	2	piston ring set
28	0.034.0053.6		piston ring set + mm 0.5
28	0.034.0054.6		piston ring set + mm 1.0
29	0.034.1256.0	1	spacer => 3819

Section: ENGINE
CAMSHAFT



Notes:
[SIRENETTA]

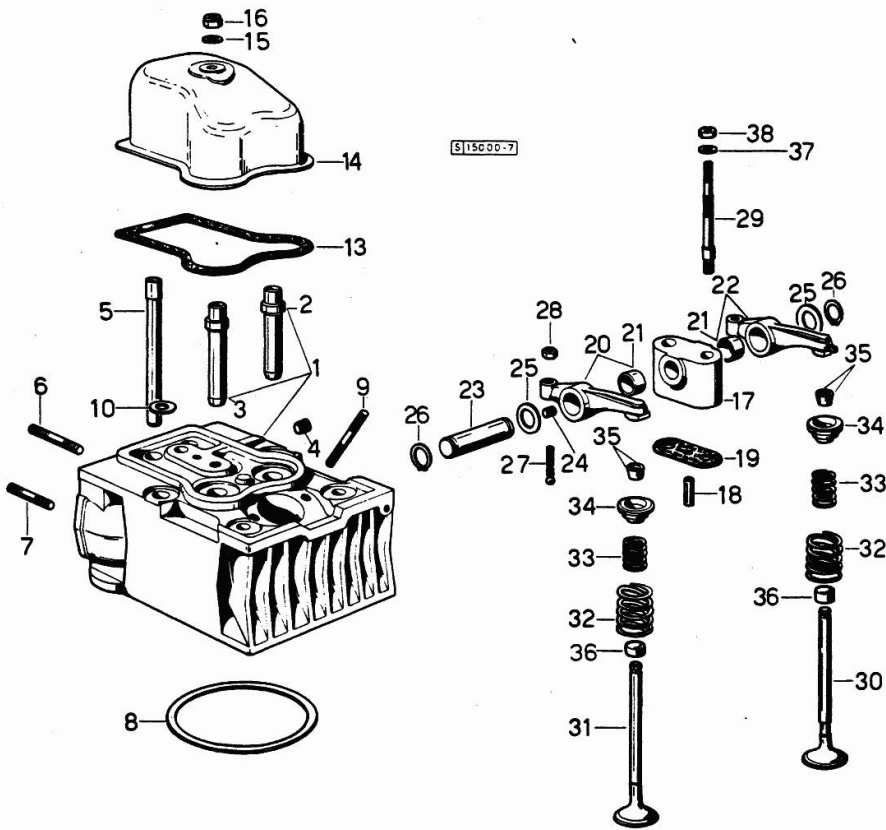
Fig.	P/n	QTY	Name
1	0.027.1351.0/10	1	camshaft
2	0.027.1350.0/20	1	pin
3	0.027.1314.0	1	flange
4	2.1470.004.2	2	lock washer 8
5	2.0312.206.2	2	screw m 8 p 1.25 x 20
6	2.1720.010.0	1	key 5x9
7	0.029.1320.0	1	gear Z = 45
8	0.035.1321.0	1	gear
10	2.0139.006.1	4	screw
11	0.002.3909.0	4	tappets
12	0.002.4180.0	4	rod
12	0.037.1331.0	4	rod 3338 <= => 3339
13	2.1539.018.0	4	special oil seal
14	0.029.1332.0	4	sleeve 3338 <= => 3339 - 3518 <= => 3519
14	0.034.1332.6	4	sleeve
14	0.039.1332.0/10	4	sleeve
15	2.1539.022.0	4	special oil seal 12.37x2.62
16	2.4019.090.1	4	spring 25x34x2.5
17	2.1569.037.0	4	gasket
18	2.1650.513.0	1	pin 6 x 30
19	0.039.1350.0	4	ring 12832 <=

Section: ENGINE
CYLINDER HEAD 3338 <--

Fig.	P/n	QTY	Name
------	-----	-----	------

Notes:
[SIRENETTA]

0	0.029.0057.6	1	gasket set FOR 1 CYLINDER VALVE GRINDING AND PISTON RING RENEWAL
1	0.029.1410.3	2	engine head
2	0.029.1417.0	2	valve guide
3	0.037.1417.0/10	2	valve guide
4	2.3130.001.1	2	plug 1/8" gas
5	0.029.1418.0	4	sleeve
6	2.0432.007.1	2	stud bolt m 8 p.1.25 / p.1 x 30
6	2.0432.022.1	1	stud bolt m 8 p 1.25-1x85
6	2.0432.025.1	1	stud bolt m 8 p 1.25-1x100
7	2.0432.003.1	4	stud bolt m 8 p.1.25 / p.1 x 20
8	2.1589.035.0	2	shoulder ring
9	2.0439.087.1	4	stud bolt
10	2.1599.144.0	10	shoulder
13	0.029.1450.0	2	gasket
14	0.029.1440.2	2	cap
15	2.1560.004.0	2	copper gasket 8.2 x 14
16	2.1099.056.1	2	special nut m8 p.1
17	0.029.1430.0	2	old part number
18	0.029.1452.0	2	tube
19	0.029.1451.0/10	2	gasket
20	0.002.5937.3/30	2	rocker arm
21	2.1559.021.0/40	4	bushing 15x19x22
22	0.002.5936.3/40	2	rocker arm
23	0.029.1431.0	2	pin
24	2.0512.102.1	4	screw m 6 p.1 x 8
25	2.1599.019.0	4	shoulder ring 19.5x31x2
26	2.1410.055.1	4	circlip 19
27	0.021.1434.0	4	screw
28	2.1019.039.1	4	old part number
29	0.029.1453.0/10	2	stud bolt
30	0.029.1421.0/10	2	exhaust valve Ø mm 9
31	0.029.1420.0/10	2	inlet valve Ø mm 9
32	2.4019.193.0	4	spring 36.15x55.2x3.2
33	2.4019.194.0	4	spring 22.70x50.7x2.1
34	0.002.9215.0	4	cup
36	0.021.1453.0/20	8	small cover
37	2.1310.006.2	4	flat washer 10.5x21
38	2.1011.421.2	2	nut m 10 p.1.25



Thank you so much for reading.
Please click the “Buy Now!”
button below to download the
complete manual.



After you pay.

You can download the most
perfect and complete manual in
the world immediately.

Our support email:

ebooklibonline@outlook.com