

Section: ENGINE  
CRANKCASE

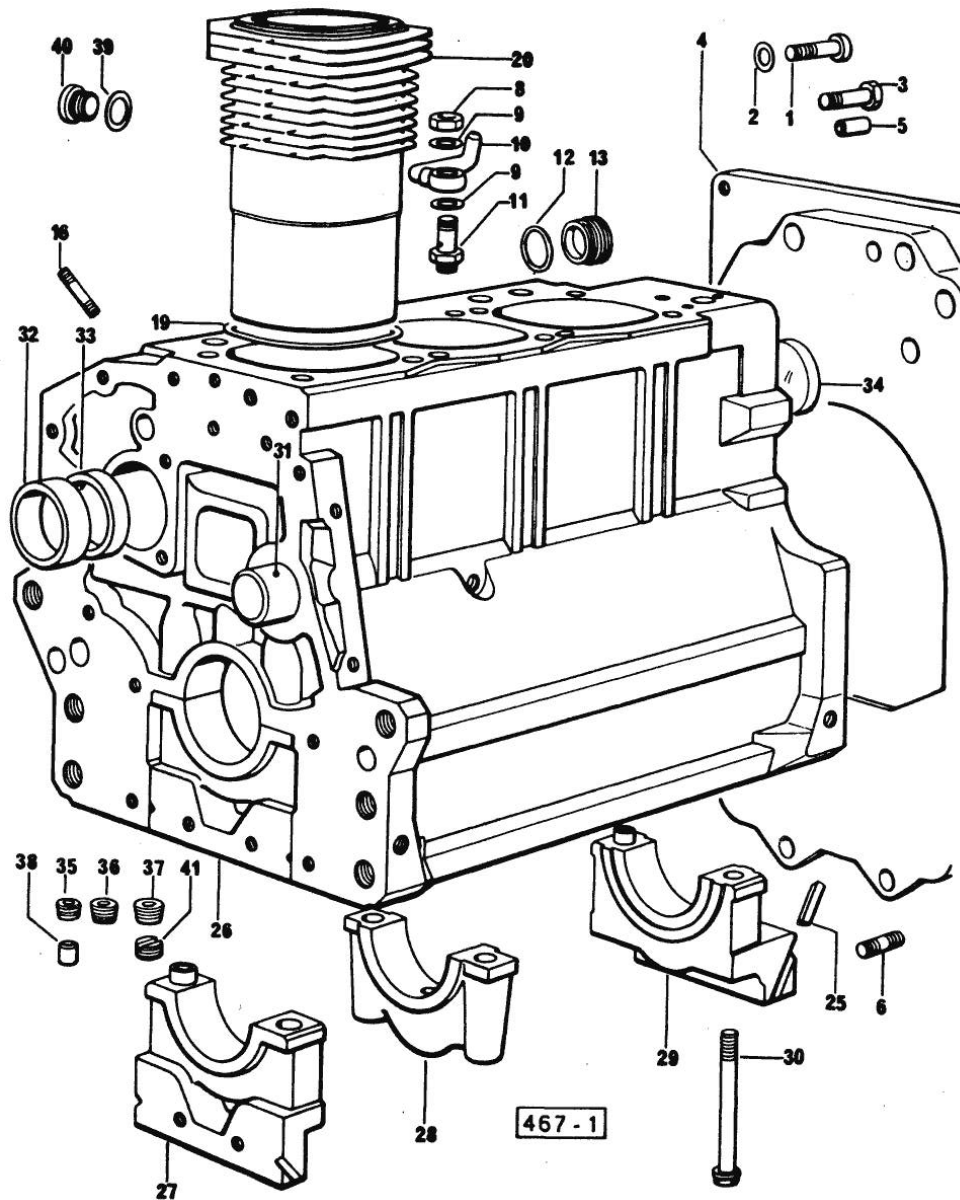


Fig.	P/n	QTY	Name
------	-----	-----	------

Notes:  
[VIGNERON 62]

0	0.085.0050.6	1	gasket set - FOR ENGINE MOUNTING
1	2.0312.516.1	2	screw m 14 p.2x50
2	2.1480.018.1	2	washer 14
3	2.0112.511.1	8	screw m 14 p.2 x 30
4	0.330.1130.0	1	extension
5	2.1651.912.0	2	cylindrical plug 12x28
6	2.0432.255.1	2	stud bolt m 12 p.1.75 - 12 p1.25x25
8	2.1099.108.2	3	special nut m 10 p.1
9	2.1560.006.0	6	gasket 10.2 x 16
10	0.086.1550.2	3	sprayer nozzle
11	0.065.1160.3/20	3	valve
12	2.1539.047.2	1	old part number
13	2.3199.405.2	1	plug m 28 p.1.5
16	2.0439.154.1	9	old part number
19	2.1519.096.0	3	oil seal
20	0.085.1120.0/10	3	engine cylinder gasket
25	0.066.1152.0	4	gasket
26	0.085.1110.4/10	1	-
27	0.065.1112.3	1	support
27	2.1699.165.0	1	bush 12.3x15x16
28	0.065.1114.0	2	old part number
29	0.065.1116.3	1	support
29	2.1699.165.0	1	bush 12.3x15x16
30	0.065.1117.0	8	screw m 12 x 100
31	0.066.1151.0/10	1	-
32	0.065.1141.0	1	special bushing 59X55X30
33	0.065.1140.0	3	special bushing 59X55X20
34	2.3179.012.0	1	plug 60
35	2.3130.001.1	11	plug 1/8" gas
36	2.3130.002.1	2	plug 1/4" gas
37	2.3130.003.1	7	plug 3/8" gas
38	2.3199.092.0	3	plug 8 x 12
39	2.1560.017.0	1	gasket 22.2 x 27
40	2.3120.002.4	1	plug m 22 x 1.5
41	2.1324.011.0	1	plug

Section: ENGINE  
TIMING CASE

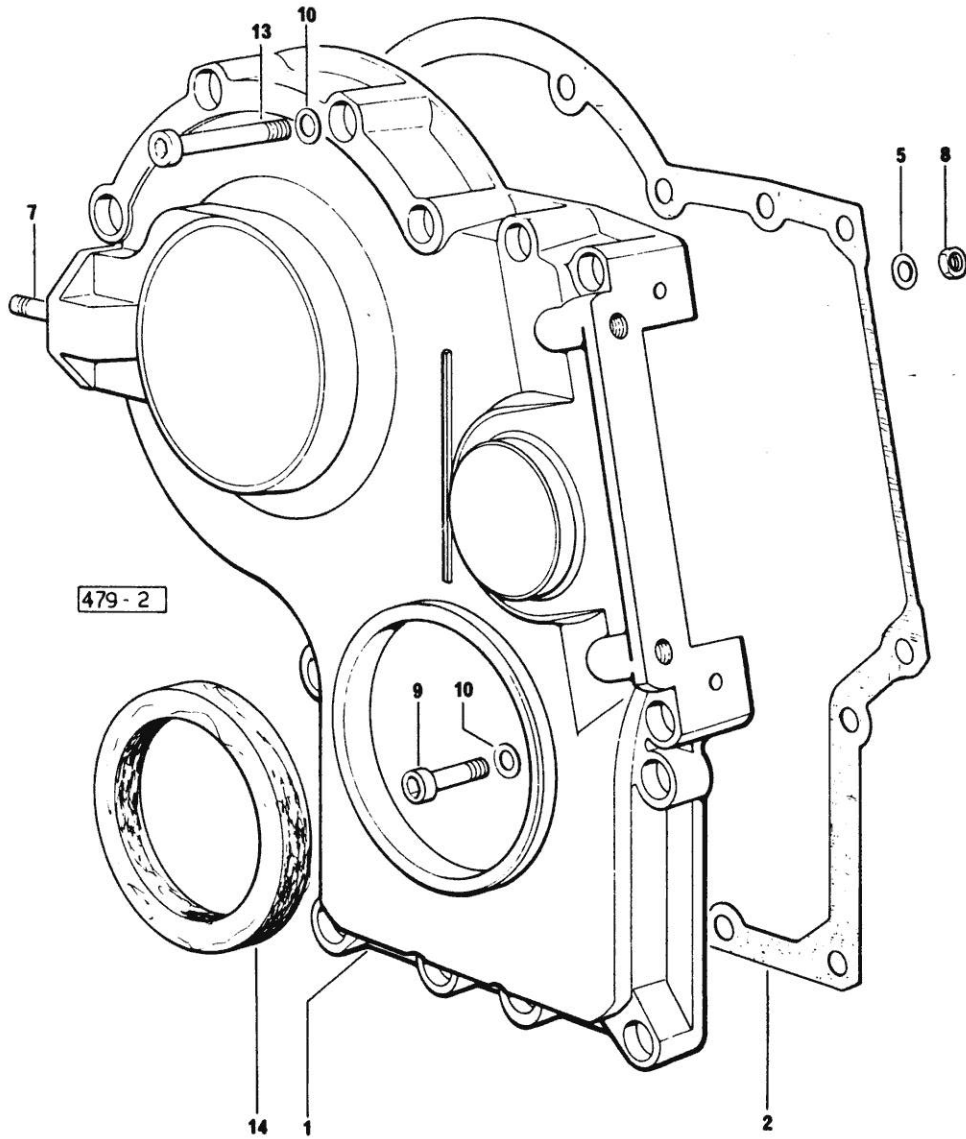


Fig.	P/n	QTY	Name
------	-----	-----	------

Notes:  
[VIGNERON 62]

1	0.065.1132.0/20	1	guard
2	0.065.1150.0/10	1	gasket
5	2.1470.004.2	4	lock washer 8
7	2.0432.003.7	2	stud bolt m 8 p.1.25 / p.1 x 20
8	2.1011.405.2	2	nut m 8 p.1
9	2.0312.208.1	8	screw m 8 p.1.25 x 25
10	2.1480.014.1	15	washer 8
13	2.0312.214.1	3	screw m 8 p.1.25 x 40
13	2.0312.219.2	4	screw m 8 p.1.25x65
14	2.1529.072.0	1	oil seal

**CRANKSHAFT**

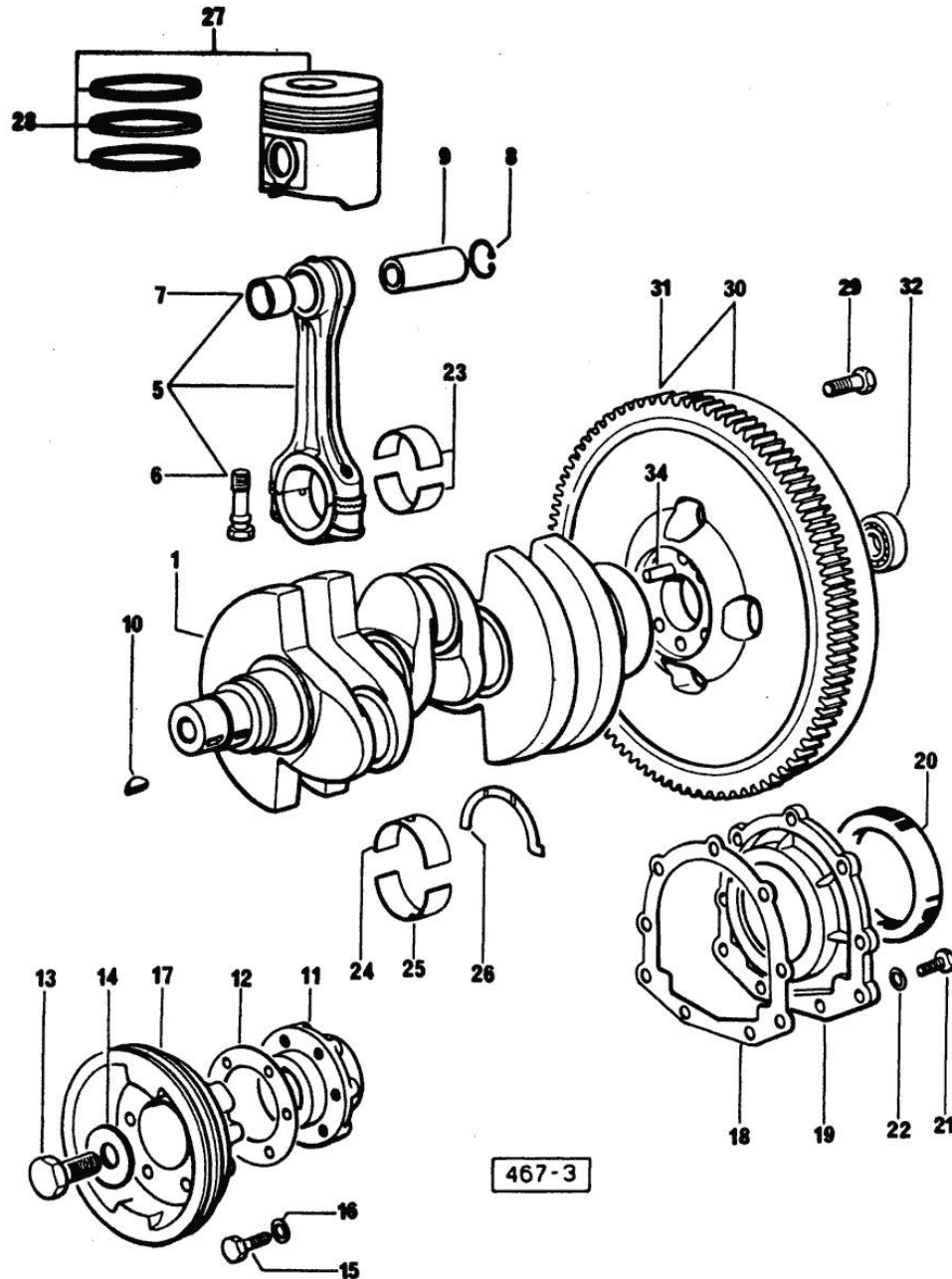


Fig.	P/n	QTY	Name
------	-----	-----	------

Notes:  
[VIGNERON 62]

1	0.085.1210.3	1	crankshaft
5	0.078.1220.3/10	3	engine connecting rod - X 1000.4 W
6	2.0139.021.0	6	screw
7	2.1559.114.0/10	3	special bushing
8	2.1411.014.1	8	circlip 35
9	0.078.1236.0	3	piston pin Ø 18 / Ø 35 / L = mm 86
10	2.1720.006.0	2	key 4x6.5
11	0.065.1248.0/10	1	hub
12	2.1589.137.0	1	shoulder ring 71x110x1
13	2.0399.095.2/10	1	screw
14	2.1599.503.2	1	shoulder ring
15	2.0112.317.2	6	screw m 10 p.1.5 x 45
16	2.1470.006.2	6	lock washer 10
17	0.065.1244.0	1	pulley
18	0.065.1254.0	1	gasket
19	0.065.1253.0/10	1	cover
20	2.1529.073.0	1	special oil seal 110x130x13
21	2.0112.207.2	9	screw m 8 p 1.25 x 20
22	2.1474.009.2	9	spring washer 8
23	0.065.1225.0	6	con.rod half bushing STANDARD - A = 28.75 -> 29.00
23	0.065.1225.7	6	con.rod half bushing - mm 0.25
23	0.065.1225.8	6	con.rod half bushing - mm 0.50
24	0.065.1215.0	4	main half bushing STANDARD
24	0.065.1215.7	4	main half bushing - mm 0.25
24	0.065.1215.8	4	main half bushing - mm 0.50
25	0.065.1216.0	4	main half bushing
25	0.065.1216.7	4	main half bushing - mm 0.25
25	0.065.1216.8	4	main half bushing - mm 0.50
26	0.065.1218.0	3	shim STANDARD
26	0.065.1218.7	3	shim + mm 0.10
26	0.065.1218.8	3	shim + mm 0.15
27	0.086.0060.6	3	complete piston
28	0.086.0052.6	3	piston ring set
29	0.330.1250.0	6	screw m 12 p.1.25x98
30	0.330.1247.3	1	flywheel
31	0.069.1242.0	1	crown wheel Z = 121
32	2.2041.008.0	1	ball bearing 20x47x14
34	2.1652.915.0	1	cylindrical plug 12x35

Section: ENGINE

**CAMSHAFT**

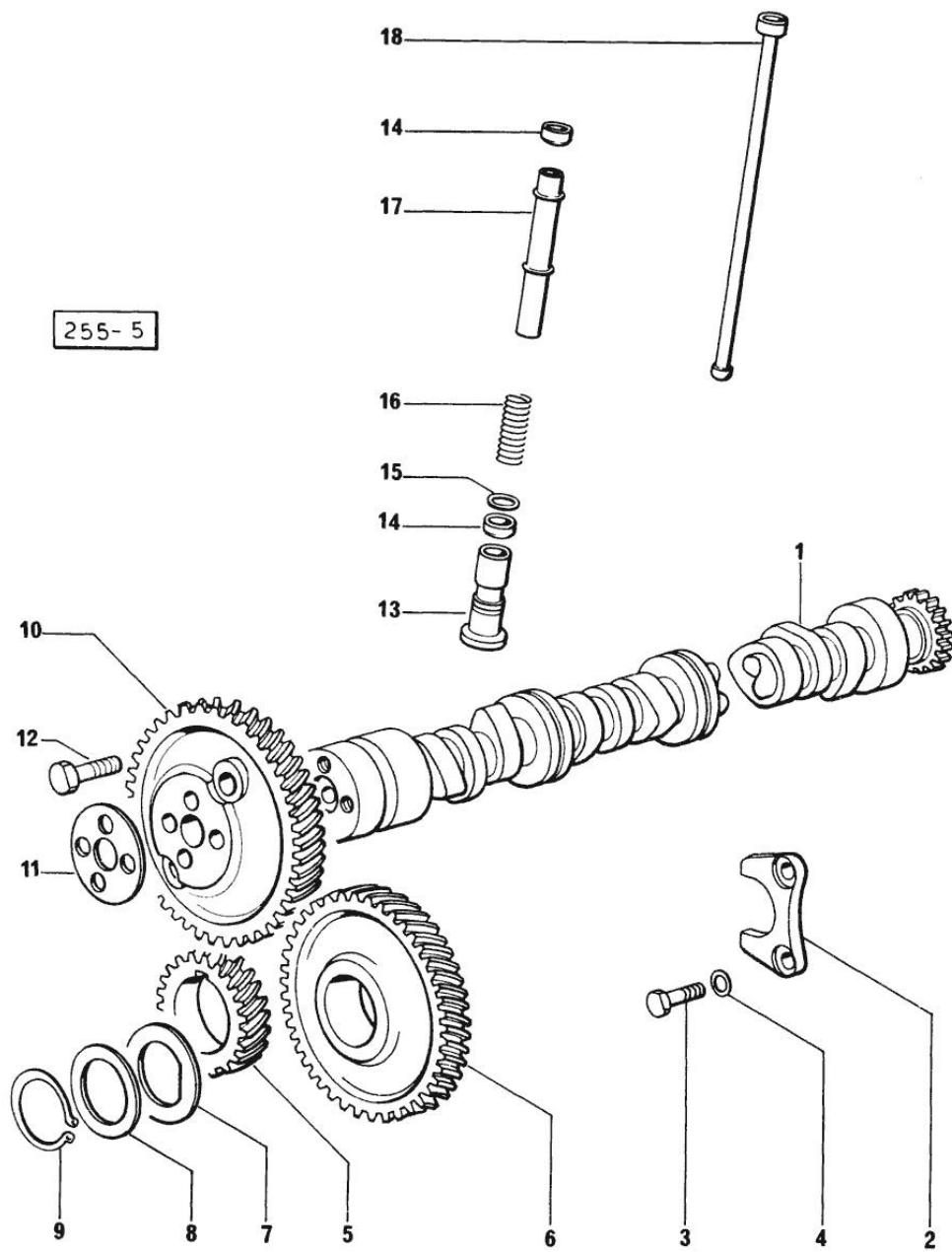


Fig.	P/n	QTY	Name
------	-----	-----	------

Notes:  
[VIGNERON 62]

1	0.065.1324.0	1	gear
1	0.070.1310.3/20	1	camshaft
2	0.065.1353.0	1	small plate
3	2.0312.205.2	2	screw
4	2.1480.014.1	2	washer 8
5	065.1323.0/20	1	-
6	0.065.1325.3/20	1	gear Z = 57
6	2.1559.185.0/10	1	bushing
7	065.1351.0	2	-
8	0.065.1352.0	1	shim
9	2.1410.016.1	1	circlip 40
10	0.065.1354.0/10	1	gear z=58
11	0.065.1350.0	1	small disc
12	2.0132.207.2	4	screw m 10 p.1 x 25
13	0.065.1330.0	6	tappets
14	2.1569.114.0	12	gasket
15	2.1599.437.0	6	shoulder ring
16	2.4019.300.1	6	spring
17	0.065.1332.0	6	sleeve
18	0.065.1331.2	6	rod

Section: ENGINE  
CYLINDER HEAD

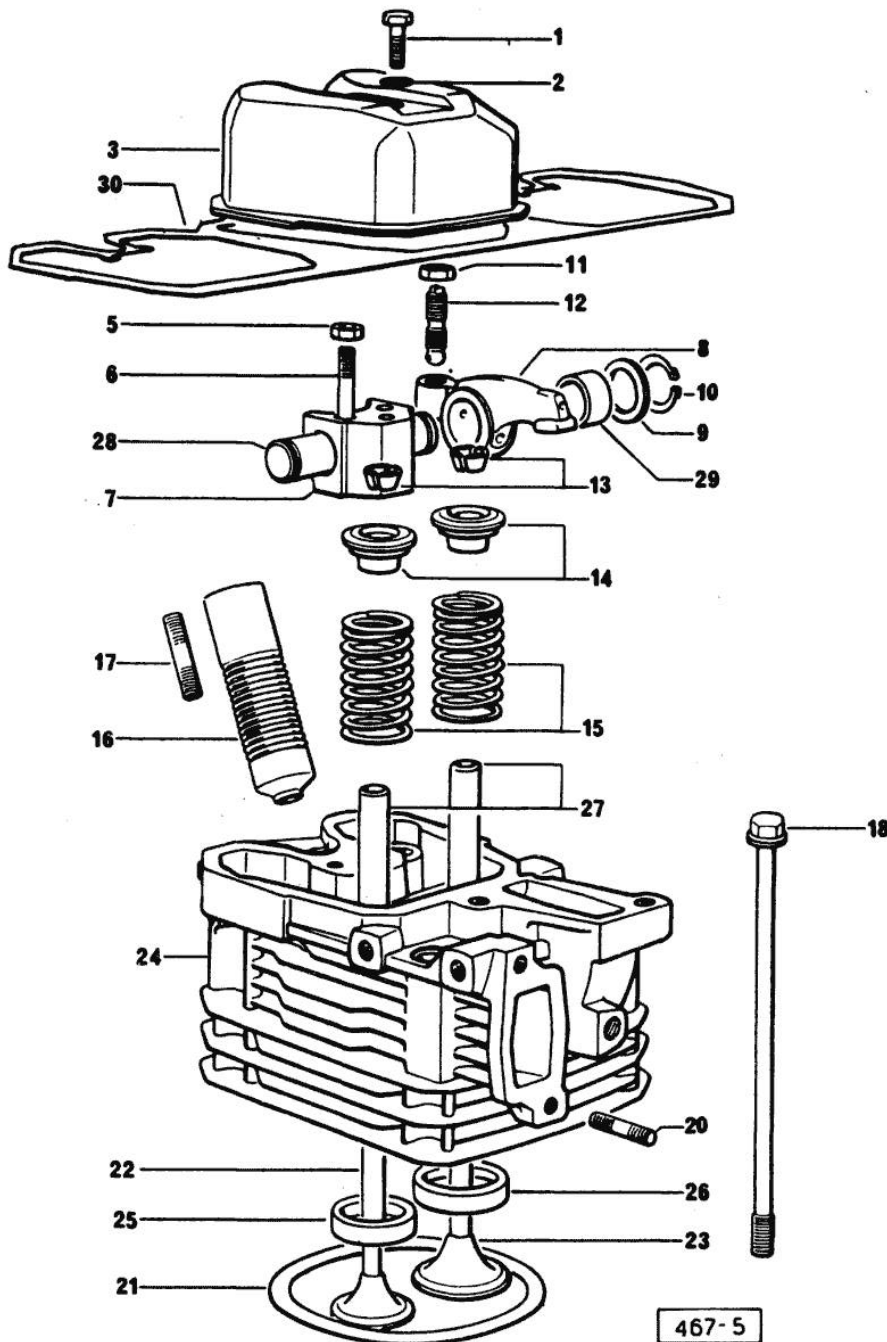


Fig.	P/n	QTY	Name
<b>Notes:</b> [VIGNERON 62]			
0	0.085.0057.6	1	gasket set - FOR 1 CYLINDER VALVE GRINDING AND PISTON RINGS REPLACEMENT
1	2.0112.211.2	3	screw m 8 p.1.25 x 30
2	2.1560.204.0	3	gasket
3	0.066.1440.0/10	3	small cap
5	2.1011.421.2	6	nut m 10 p.1.25
6	2.0432.163.1	6	stud bolt m 10 p.1.5 / p.1.25 x 45
7	0.066.1430.0	3	support
8	0.066.1432.0	6	rocker arm
9	2.1599.432.0	6	shoulder ring
10	2.1410.055.1	6	circlip 19
11	2.1011.405.2	6	nut m 8 p.1
12	0.021.1434.0	6	screw
13	0.074.1423.0	6	conical valve cotter
14	0.066.1425.0	6	cup
15	2.4019.287.0	6	spring
16	0.065.1413.0/10	3	bush L = mm 97.1
17	2.0432.161.7	3	stud bolt m 10 p.1.5 / p.1.25 x 40
18	0.065.1443.0/20	12	screw
20	2.0432.007.1	6	stud bolt m 8 p.1.25 / p.1 x 30
21	0.085.1450.0	3	head gasket mm 0.5 -A-
21	0.085.1451.0	3	head gasket mm 0.7 -B-
21	0.085.1452.0	4	head gasket mm 1.0 -C-
21	0.085.1453.0	4	head gasket mm 0.8 -D-
22	0.066.1421.0	3	exhaust valve
23	0.078.1420.0	3	inlet valve
24	0.081.1410.3/10	3	engine head
25	0.066.1427.0	3	valve seat
26	0.078.1426.0	3	valve seat
27	0.066.1416.0	6	valve guide
28	0.066.1431.0	3	pin
29	2.1559.021.0/40	6	bushing 15x19x22
30	0.069.1450.0/10	1	gasket

467-5

Section: ENGINE  
LUBRICATION

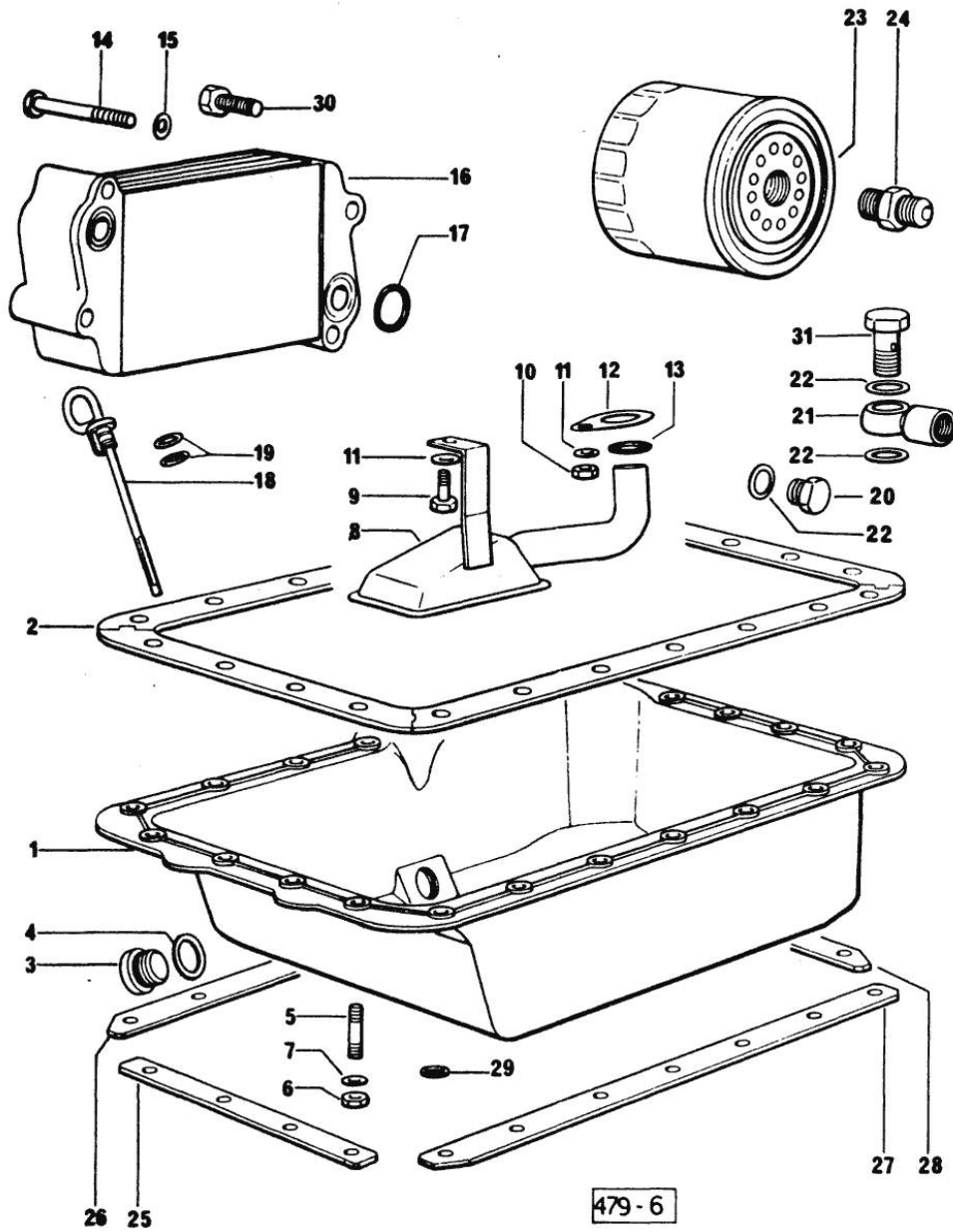


Fig.	P/n	QTY	Name
<b>Notes:</b>			
[VIGNERON 62]			
1	0.070.1510.2/20	1	oil sump
2	0.070.1551.0	1	gasket
3	2.3199.001.2	1	plug 1/2" gas
4	2.1560.054.0	1	gasket 21 x 26
5	2.0432.003.1	22	stud bolt m 8 p.1.25 / p.1 x 20
6	2.1121.105.2	22	nut m 8 x 1
7	2.1470.004.2	22	lock washer 8
8	0.070.1531.3	1	tube
9	2.0112.205.2	1	screw m 8 p.1.25 x 16
10	2.1011.105.2	1	nut m 8 p.1.25
11	2.1470.004.2	2	lock washer 8
12	0.065.1538.0	1	flange
13	2.1539.040.0	1	special oil seal 21.82 x 3.53
14	2.0312.216.1	2	screw
15	2.1310.004.2	4	flat washer 8.4x17
16	0.085.1540.3	1	oil cooler
17	2.1539.048.0	2	special oil seal 20.35x1.78
18	0.085.1513.2/10	1	dipstick
19	2.1539.065.0	2	special oil seal 8.73 x 1.78
20	2.3110.402.1	1	plug m 12 p.1.5x10
21	2.3249.014.2	1	pipe fitting m 12 p.1.5
22	2.1560.008.0	3	gasket 12.2 x 18
23	0.044.1554.0	1	grease cartridge
24	2.3339.307.1/20	1	pipe fitting
25	0.070.1554.0	1	small plate
26	0.070.1552.0	1	small plate
27	0.070.1553.0	1	small plate
28	0.070.1555.0	1	small plate
29	2.1599.459.0	3	small plate
30	2.0399.125.2	2	screw
31	2.3339.448.2	1	pipe union m 12 p.1.75

Section: ENGINE  
LUBRICATION

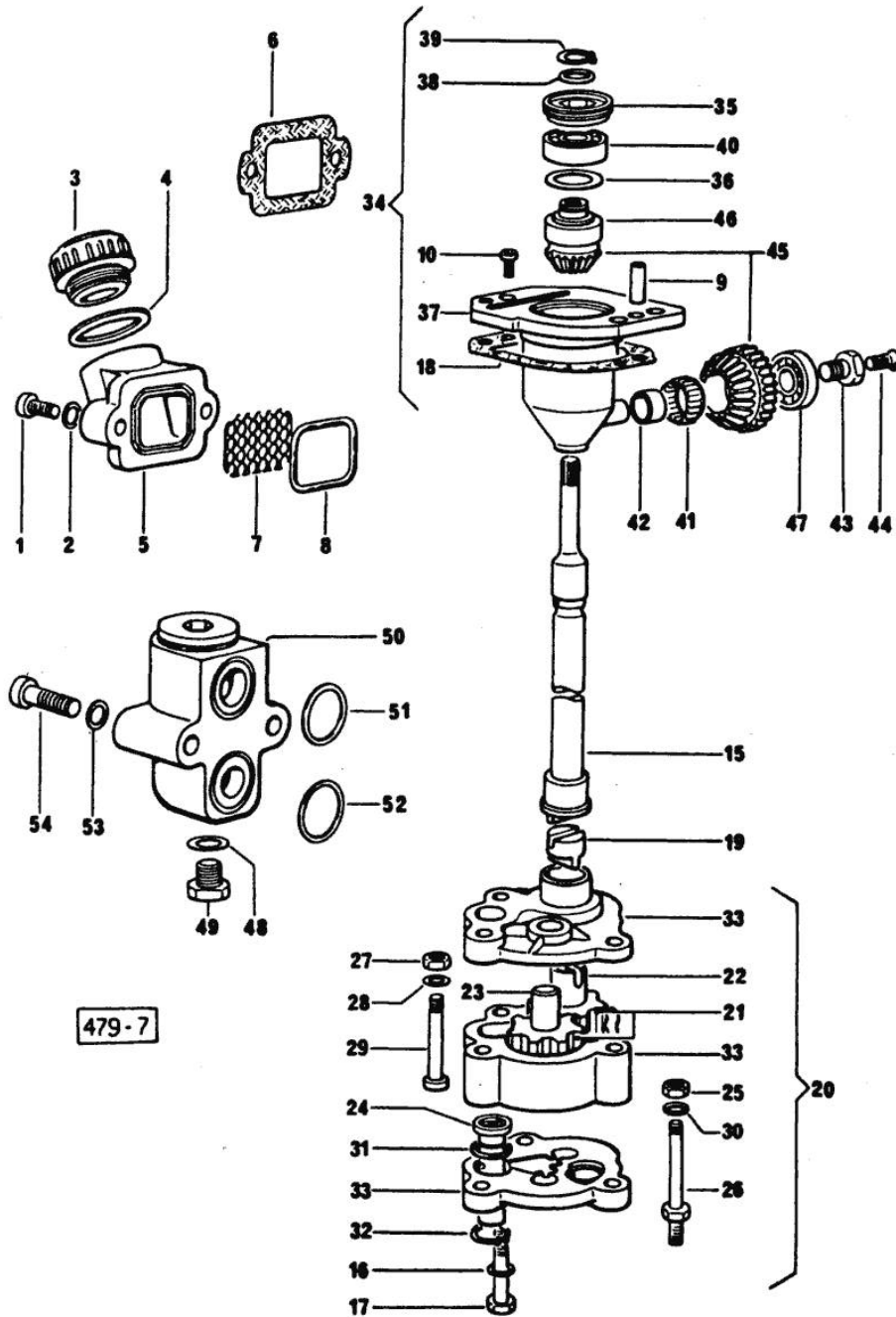


Fig.	P/n	QTY	Name
------	-----	-----	------

Notes:  
[VIGNERON 62]

1	2.0312.205.2	2	screw
2	2.1480.014.1	2	washer 8
3	0.041.1135.4	1	plug 1" gas
4	2.1569.072.0	1	gasket 32 x 39.5 x 2
5	0.065.1565.0/10	1	pipe union
6	0.065.1566.0	1	gasket
7	0.065.1567.0/10	1	filter
8	2.1539.042.0	1	special oil seal 47.35x1.78
9	2.1652.711.0	2	cylindrical plug 8x25
10	2.0169.005.2	2	screw m 6 p.1 x 12
15	0.065.1569.0	1	shaft
16	2.1470.006.2	2	lock washer 10
17	2.0112.323.2	2	screw m 10 p.1.5x70
18	0.065.1560.0/10	2	gasket
19	0.065.1562.0	1	joint
20	9.06699.42.2	1	old part number
21	0.066.1521.0/20	2	gear
22	0.066.1528.0/10	1	pin
23	0.066.1529.0/10	1	small shaft
24	0.065.1552.3/40	1	valve
25	2.1011.105.2	1	nut m 8 p.1.25
26	2.0399.119.2	1	screw
27	2.1011.103.2	1	nut m 6 p.1
28	2.1480.012.1	1	washer 6, d128
29	2.0312.115.1	1	screw m 6 p.1x45
30	2.1480.014.1	1	washer 8
31	2.1539.041.0	1	special oil seal
32	2.1410.004.1	1	circlip 16
33	0.000.0000.1	1	cannot be supplied
34	9.07599.43.3	1	old part number
35	2.1219.025.2/10	1	ring nut m 36 p.1.5
36	2.1589.148.0	1	shoulder ring 28.2 x 31.8 x 0.5
36	2.1589.150.0	1	shoulder ring 28.2 x 31.8 x 0.1
36	2.1589.151.0	1	shoulder ring 28.2 x 31.8 x 0.15
37	0.075.1551.3/20	1	support
38	2.1589.146.0	1	shoulder ring 15.2 x 19 x 0.15
38	2.1589.147.0	1	shoulder ring 15.2 x 19 x 0.10
38	2.1589.153.0	1	shoulder ring 15.2 x 19 x 1.00
39	2.1410.057.1	1	circlip 15
40	2.2020.001.0	1	ball bearing 15 x 32 x 8.00
41	2.2725.016.0	1	roller cage 15 x 21 x 12

Section: ENGINE  
LUBRICATION

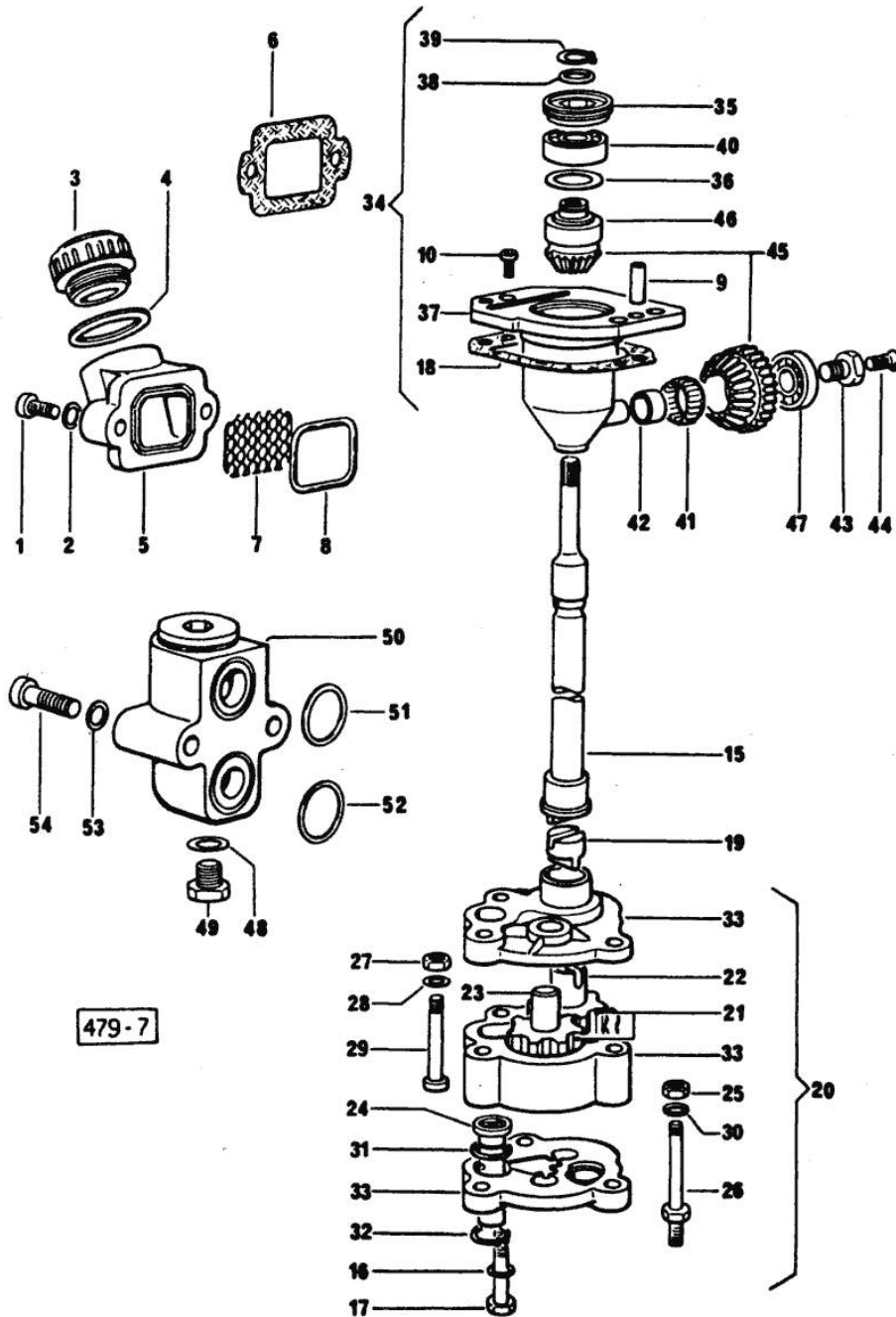


Fig.	P/n	QTY	Name
42	2.2680.020.0	1	ring 12 x 15 x 12
43	2.0399.128.2/10	1	screw m 8 p.1 x 8
44	2.0342.007.2	1	screw m 4 p.0.7x25
45	0.065.1558.6	1	bevel drive
46	0.065.1559.0	1	bush
47	2.2030.002.0	1	ball bearing 12 x 28 x 8
48	2.1560.009.0	1	gasket 14.2x18
49	2.3110.403.1	1	plug m 14 p.1.5x12
50	0.065.1581.4/10	1	valve
51	2.1539.048.0	1	special oil seal 20.35x1.78
52	2.1539.075.0	1	special oil seal 25.12x1.78
53	2.1480.014.1	2	washer 8
54	2.0312.215.1	2	screw m 8 p.1.25 x 45



Section: ENGINE  
LUBRICATION

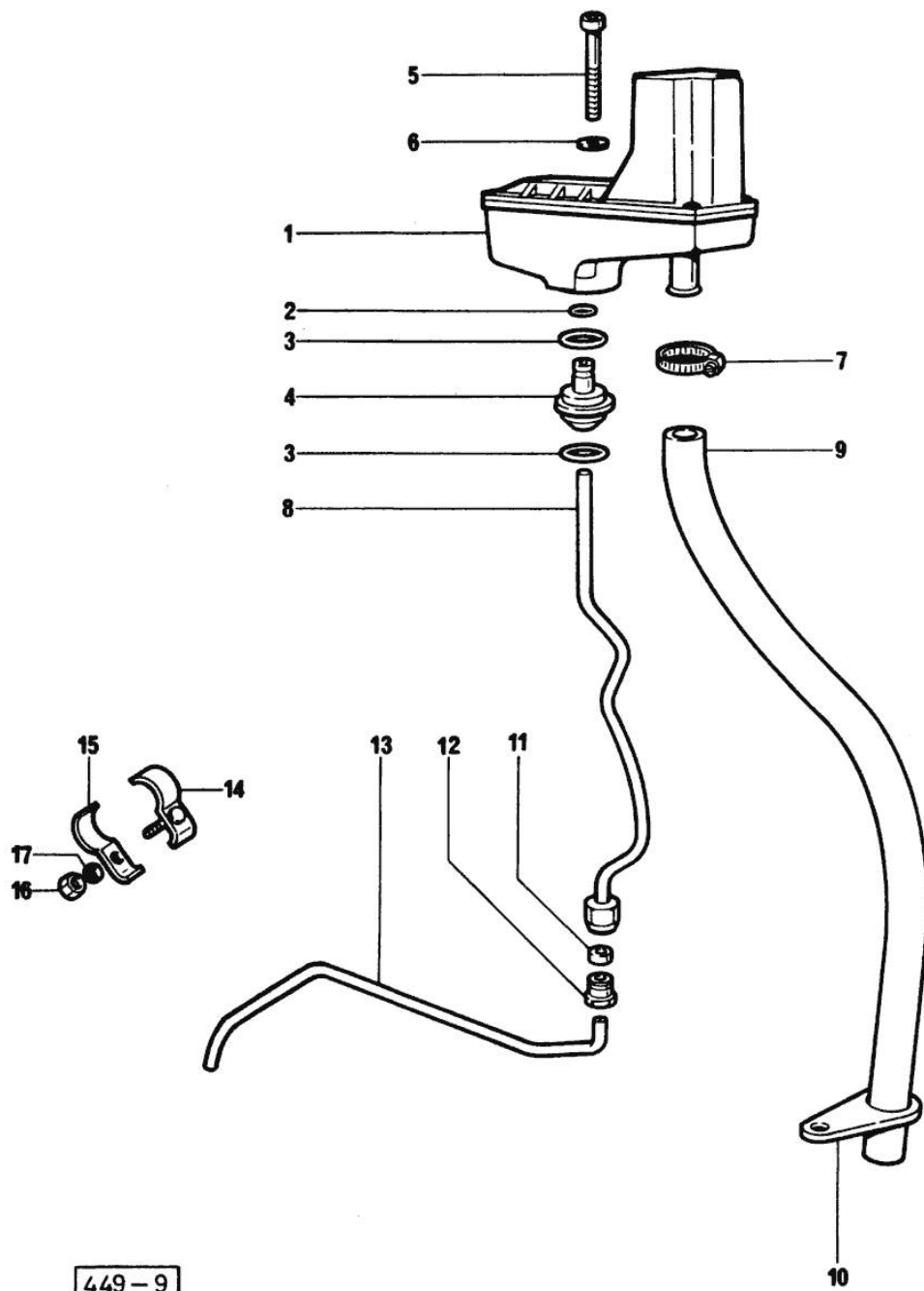


Fig.	P/n	QTY	Name
<b>Notes:</b> [VIGNERON 62]			
1	0.000.0000.1	1	cannot be supplied ☞ 01.00.8
2	2.1539.074.0	1	special oil seal 7.66 x 1.78
3	2.1539.072.0	2	special oil seal 23.52 x 1.78
4	0.066.1558.0	1	bush
5	2.0312.221.2	2	screw m 8 p.1.25x75
6	2.1480.014.1	2	washer 8
7	2.6859.073.2	1	clamp
8	0.066.1557.2	1	tube
9	0.066.1559.0	1	tube
10	0.075.1151.0	1	bracket
11	2.3350.003.1	1	nosepiece 8
12	2.3339.418.1	1	pipe fitting m 12 p.1
13	0.069.1550.0	1	tube
14	0.075.1552.2	2	bracket
15	0.075.1552.0	2	bracket
16	2.1011.103.2	2	nut m 6 p.1
17	2.1470.002.2	2	lock washer 6

449-9

Section: ENGINE

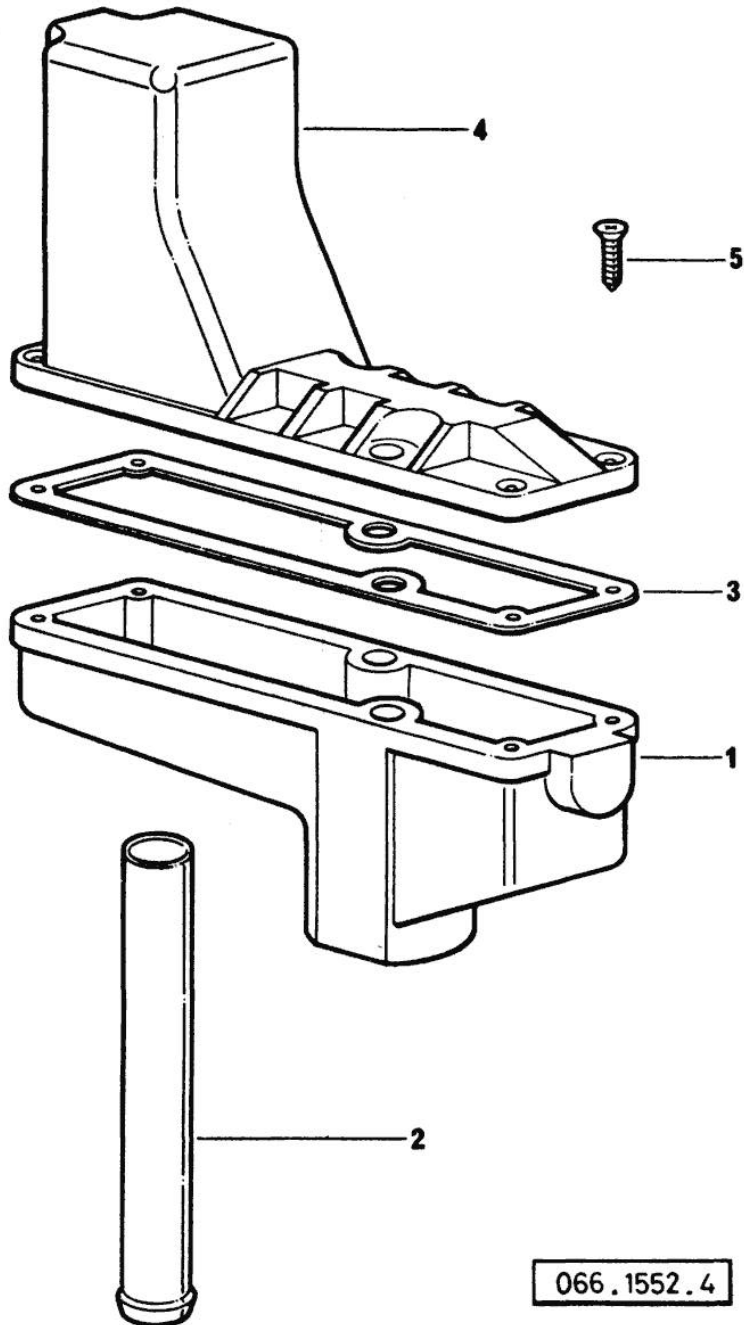
**OIL VAPORS SEDIMENT BOWL PARTS**

Fig.	P/n	QTY	Name
------	-----	-----	------

**Notes:**

[VIGNERON 62]

1	0.066.1552.0	1	sediment bowl
2	0.066.1555.0	1	tube
3	0.066.1554.0	1	gasket
4	0.066.1553.0	1	cover
5	2.0351.203.2	4	screw 3.5x9.5



066.1552.4

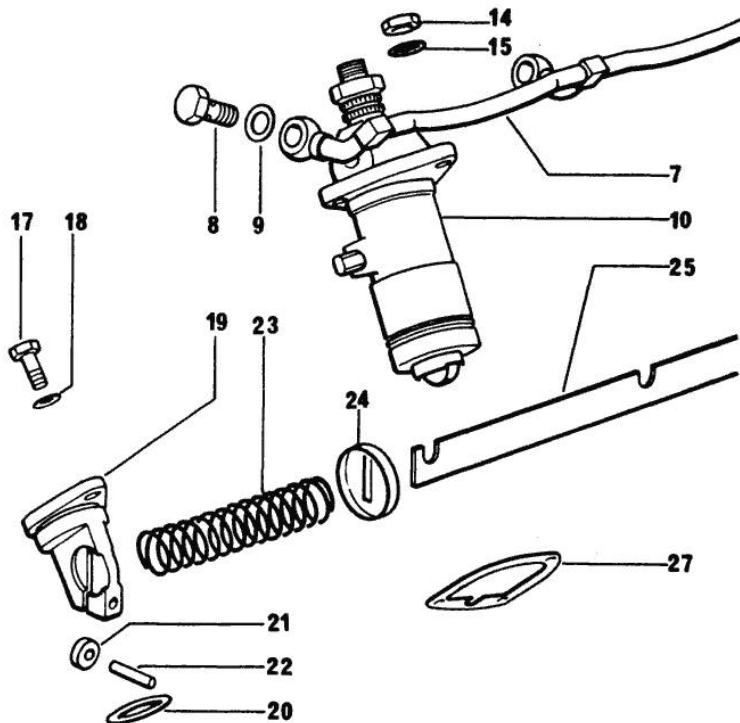
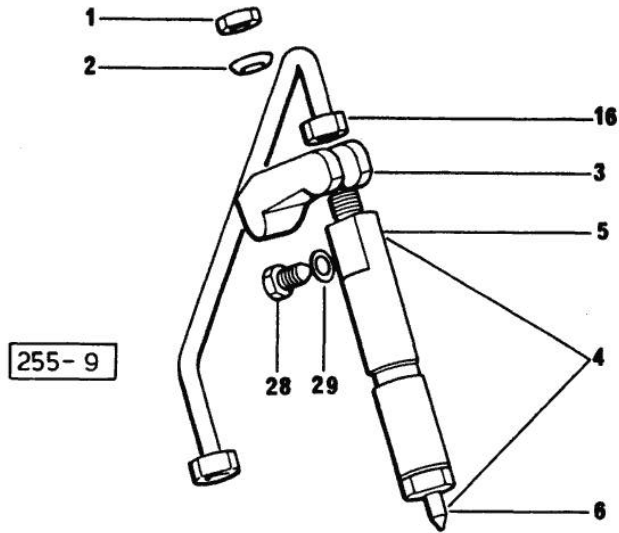
Section: ENGINE

**FUEL SUPPLY SYSTEM**

Fig.	P/n	QTY	Name
------	-----	-----	------

Notes:  
[VIGNERON 62]

1	2.1011.421.2	3	nut m 10 p.1.25
2	2.1599.454.0	3	shoulder ring 10.5x17x7.5
3	0.066.1666.0	3	bracket
4	2.4719.200.0/10	3	injector assembly BOSCH
5	2.4719.190.0	3	nozzle holder BOSCH ☞ 2.4719.190.0 ☞ 01.00.14
6	2.4729.100.0	3	nozzle BOSCH
7	0.069.1658.3/20	1	tube
8	2.3339.001.0	3	pipe fitting m 10 p.1
9	2.1560.005.0	6	copper gasket 10.2 x 14
10	2.4619.031.0	1	injector pump "A" ☞ 2.4619.031.0
10	2.4619.031.1	1	injector pump "B" ☞ 2.4619.031.1
10	2.4619.031.2	1	injector pump "C" ☞ 2.4619.031.2
10	2.4619.031.3	1	injector pump "D" ☞ 2.4619.031.3
14	2.1011.405.2	9	nut m 8 p.1
15	2.1599.458.0/10	9	shoulder ring 8.4x18x2
16	0.065.1650.3	3	tube
17	2.0112.207.2	2	screw m 8 p 1.25 x 20
18	2.1310.004.2	2	flat washer 8.4x17
19	0.065.1693.0/10	2	support
20	2.1530.072.0	2	oil seal 26.70x1.78
21	0.065.1660.0	2	roller
22	2.1652.507.0	2	pin 6x16
23	2.4019.314.1/20	1	spring 21.5x76x1
24	0.065.1659.0	1	stop
25	0.069.1613.3/20	1	rod
27	0.065.1655.0/10	1	shim mm 0.1
27	0.065.1656.0/10	1	shim mm 0.20
28	2.3119.024.2	3	plug m 6
29	2.1560.001.0	3	gasket 6.2x10



Section: ENGINE

**FUEL SUPPLY SYSTEM**

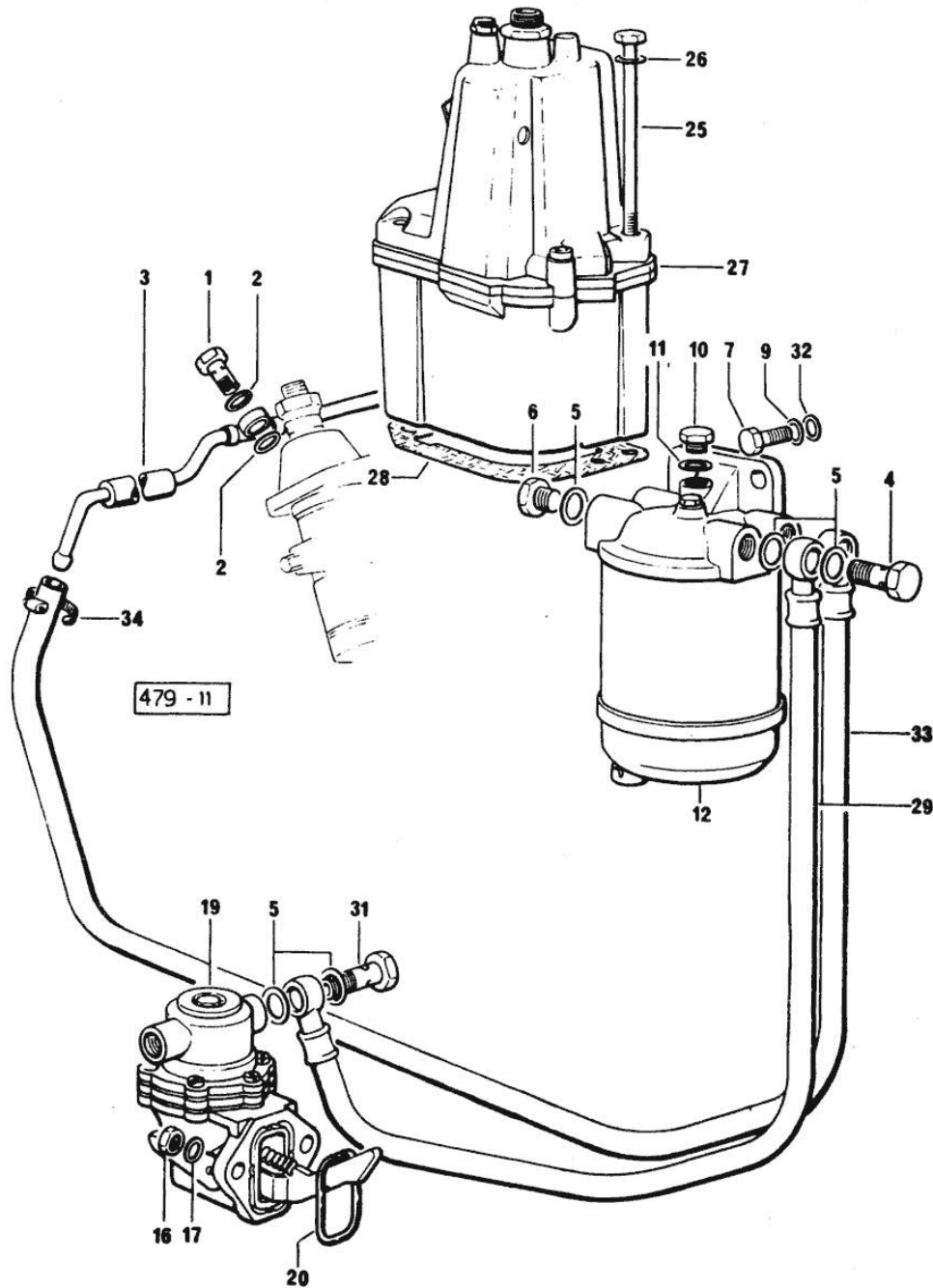


Fig.	P/n	QTY	Name
------	-----	-----	------

Notes:  
[VIGNERON 62]

1	2.3339.118.1	3	pipe union m 12 p.1.5
2	2.1560.008.0	6	gasket 12.2 x 18
3	0.069.1646.3/10	1	tube
4	2.3332.004.1	2	pipe union m 14 p.1.5
5	2.1560.009.0	8	gasket 14.2x18
6	2.3110.403.1	2	plug m 14 p.1.5x12
7	2.0112.307.2	2	screw m 10 p.1.5 x 20
9	2.1470.006.2	2	lock washer 10
10	2.3119.005.2	1	plug m 10 p.1.5
11	2.1560.005.0	1	copper gasket 10.2 x 14
12	2.4319.060.0/10	1	fuel filter ☞ 2.4319.060.0/10 ☞ 01.00.16
16	2.1011.405.2	2	nut m 8 p.1
17	2.1470.004.2	2	lock washer 8
19	2.4519.300.0	1	feed pump ☞ 2.4519.300.0 ☞ 01.00.15
20	2.1539.045.0	1	special oil seal 37.77x2.62
25	2.0399.103.2	2	screw m 8 p 1.25 x 135
26	2.1480.014.1	2	washer 8
27	9.06599.41.1	1	regulator ☞ 01.00.13
28	0.065.1674.0/10	1	gasket
29	0.069.1656.3	1	tube
31	2.3339.357.2	1	pipe union m 14 p.1.5
32	2.1310.006.2	2	flat washer 10.5x21
33	0.069.1657.3	1	tube
34	2.6850.004.0	1	clamp

**THERMO STARTER**

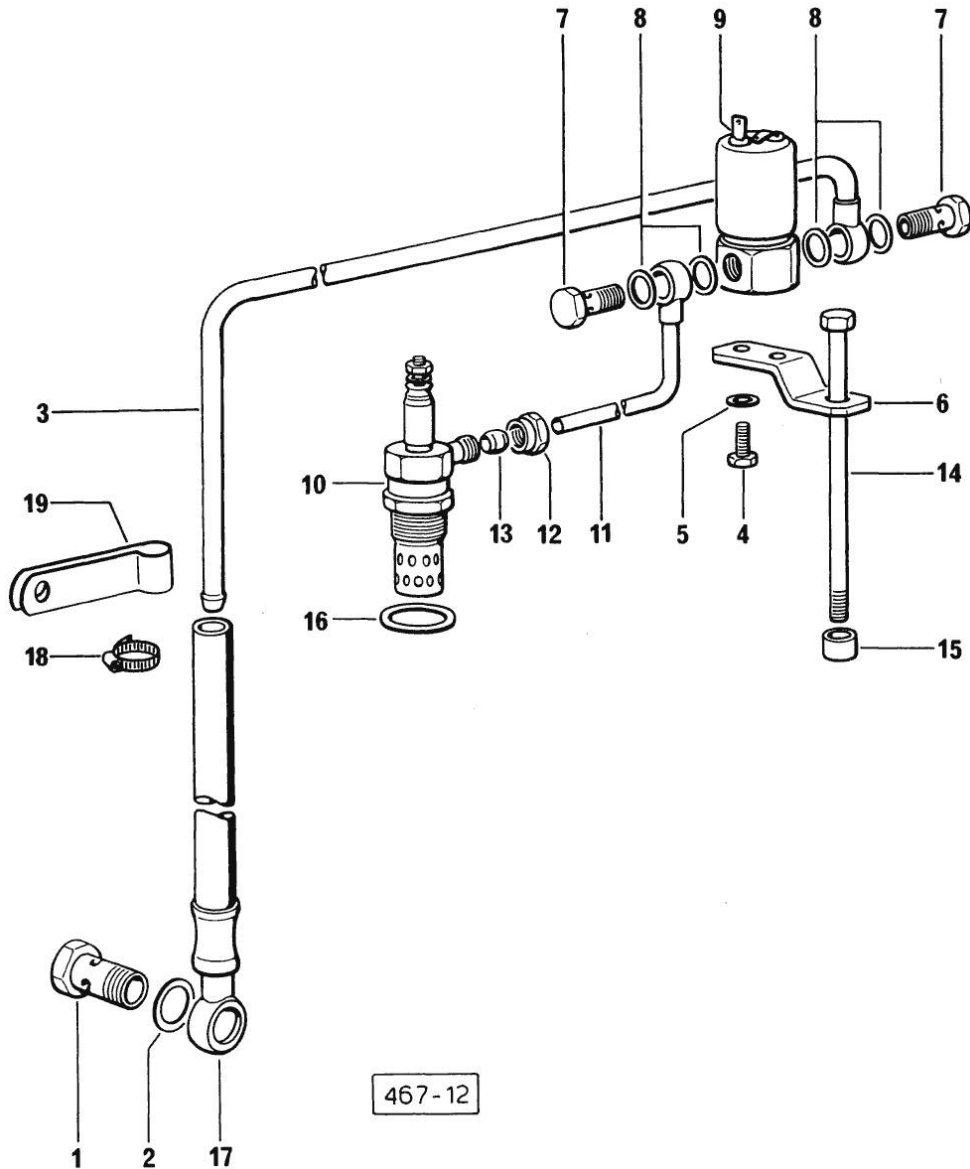


Fig.	P/n	QTY	Name
------	-----	-----	------

Notes:  
[VIGNERON 62]

1	2.3332.004.1	1	pipe union m 14 p.1.5
2	2.1560.009.0	1	gasket 14.2x18
3	0.330.1651.2	1	tube
4	2.0112.002.2	2	screw m 6 p.1 x 10
5	2.1470.002.2	2	lock washer 6
6	0.066.1663.0	1	square
7	2.3339.074.1	2	pipe union m 10 p.1x19
8	2.1560.005.0	4	copper gasket 10.2 x 14
9	2.9219.030.0	1	solenoid valve 12 V
10	2.7659.013.0	1	thermo-start 12 V
11	0.332.1650.2	1	tube
12	2.3360.002.1	1	union nut m 10
13	2.3350.002.1	1	nosepiece 6, d128
14	2.0112.231.1	1	screw m 8 p 1.25x110
15	2.1579.825.0	1	spacer
16	2.1560.016.0	1	gasket 20.2 x 26
17	0.330.1652.3	1	tube
18	2.6850.003.0	1	clamp 16-25
19	2.6839.034.2	1	bracket

467-12

Section: ENGINE  
GOVERNOR COMPONENTS

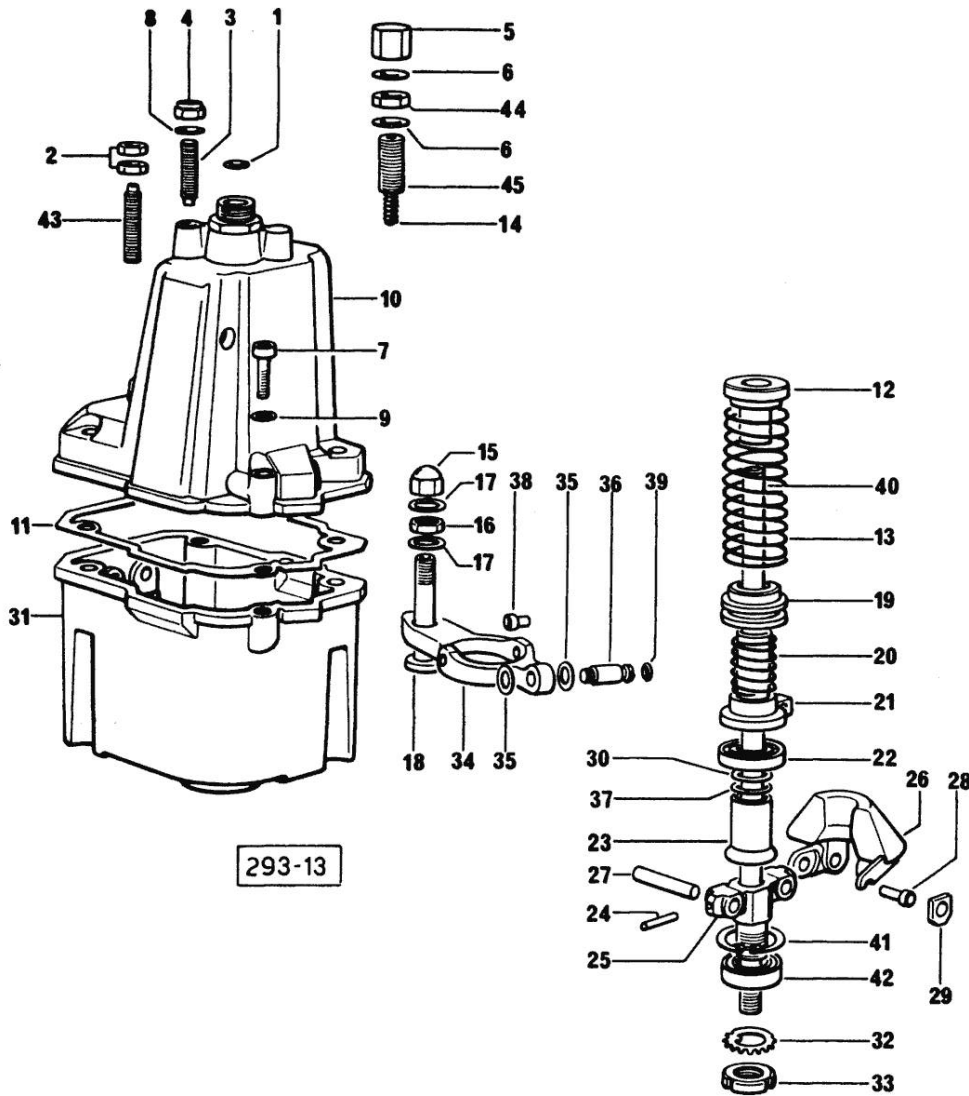


Fig.	P/n	QTY	Name
------	-----	-----	------

Notes:  
[VIGNERON 62]

1	2.1530.022.0	1	oil seal 9.92x2.62
2	2.1011.103.2	1	nut m 6 p.1
3	2.0599.063.2	1	screw m 6 p.1 x 35
4	2.1120.103.2	1	nut m 6
5	2.1099.105.2	1	cap nut m 12 p.1.25
6	2.1560.007.0	2	gasket 12.2x16
7	2.0312.112.2	2	screw m 6 p.1 x 35
8	2.1560.001.0	1	gasket 6.2x10
9	2.1480.012.1	2	washer 6, d128
10	0.065.1651.3	1	old part number
11	0.065.1673.0	1	gasket
12	0.065.1685.0/10	1	bush
13	2.4019.368.7	1	spring 30.7x68x4.1
14	2.4019.367.7	1	spring 6.8x18.5x0.8
15	2.1030.102.1	1	nut
16	2.1011.505.2	1	nut m 8 p.1
17	2.1560.003.0	2	copper gasket 8.2 x 12
18	2.0399.102.2	1	screw
19	0.065.1684.0/10	1	sleeve
20	2.4019.317.0	1	spring 25.4x24.5x1.4
21	0.065.1670.0/10	1	sleeve
22	2.2030.002.0	1	ball bearing 12 x 28 x 8
23	0.065.1618.0	1	sleeve
24	2.1631.311.0	1	roll pin 3x24
25	0.065.1615.0	1	support
26	0.065.1616.0	2	adjust.rocker
27	2.1655.312.0	2	pin a 6x40
28	0.065.1682.0	2	pin
29	0.065.1683.0	2	tube
30	2.1589.160.0	1	shoulder ring 12.5x18x0.5
31	0.065.1652.0	1	box
32	2.1241.003.1	1	lock-nut 15
33	2.1211.003.1	1	old part number
34	0.066.1664.0	1	lever
35	2.1599.457.2	2	shoulder ring 6.2x16x1
36	2.0399.101.7	1	screw m 6 x 30
37	2.1589.161.0	1	shoulder ring 12.5x18x0.2
38	0.065.1681.0/10	2	pin
39	2.1530.003.0	1	oil seal 2.90x1.78
40	0.065.1671.3/10	1	shaft
41	2.1411.014.1	1	circlip 35

**GOVERNOR COMPONENTS**

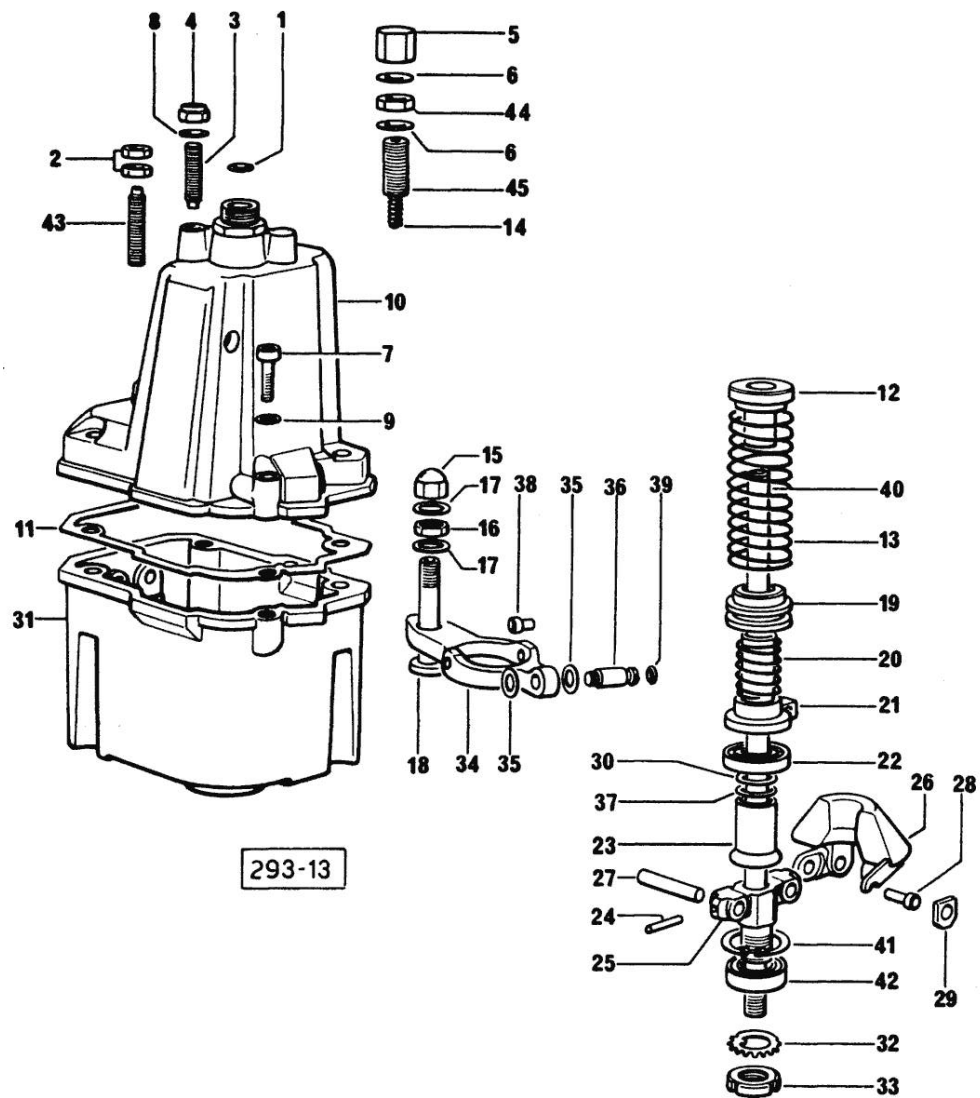


Fig.	P/n	QTY	Name
42	2.2040.003.0	1	ball bearing iso 15 bc 02
43	2.0399.111.2	1	screw m 6x26
44	2.1019.086.2	1	nut m 12 p.1.25
45	0.066.1665.0	1	screw

Thank you so much for reading.  
Please click the “Buy Now!”  
button below to download the  
complete manual.



After you pay.

You can download the most  
perfect and complete manual in  
the world immediately.

Our support email:

[ebooklibonline@outlook.com](mailto:ebooklibonline@outlook.com)