

**REAR LIFT POSITION SENSOR**

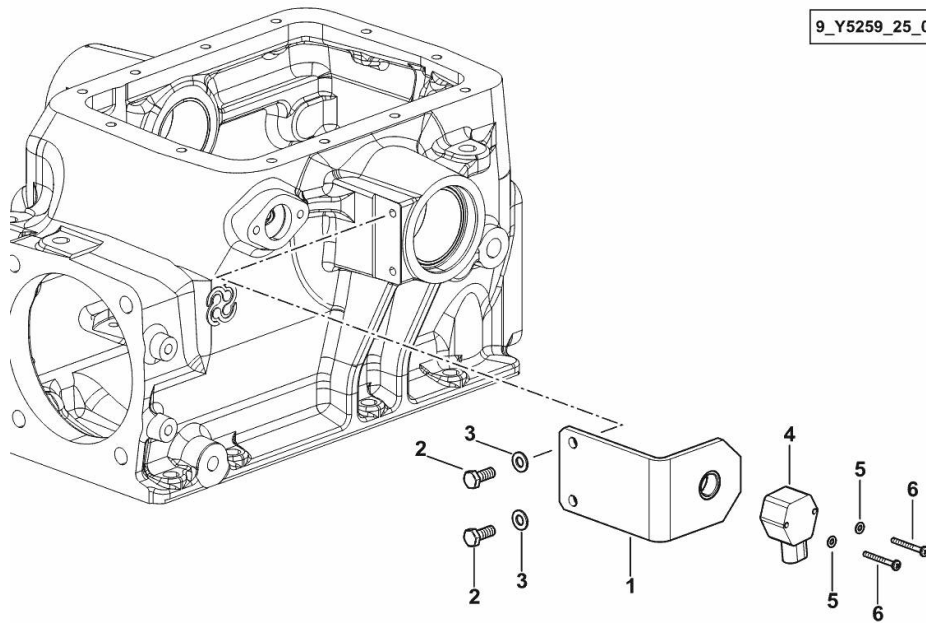
Fig.	P/n	QTY	Name
------	-----	-----	------

**Notes:**

[VIRTUS J 100 -> ZKDY370200TS10001]

1	0.020.0298.3	1	bracket
2	2.0112.207.2	2	screw m 8 p 1.25 x 20
3	2.1310.004.2	2	flat washer 8.4x17
4	2.7099.740.0/10	1	position sensor
5	2.1310.028.2	2	flat washer
6	2.0332.210.3	2	screw m 4x35

9\_Y5259\_25\_0-A-001



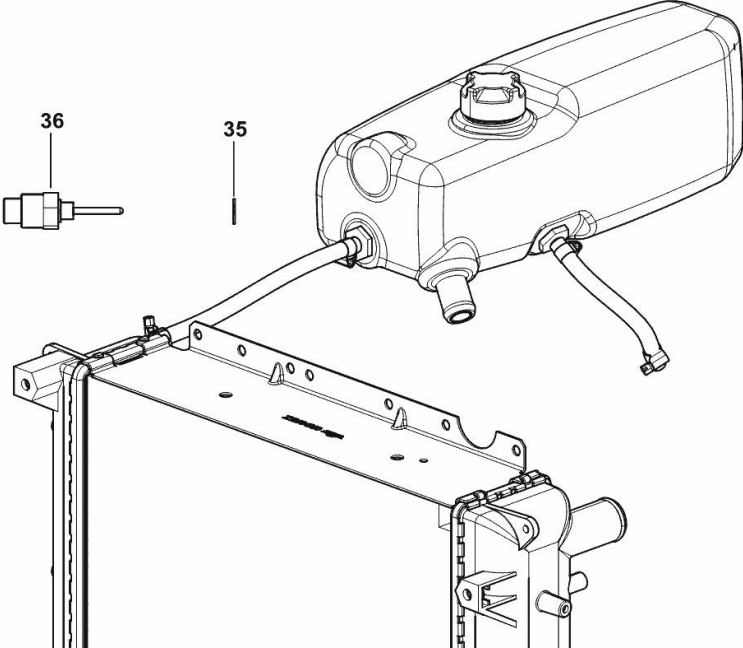
**SENSOR DE NÍVEL**

Fig.	P/n	QTY	Name
------	-----	-----	------

Notes:  
[VIRTUS J 100 -> ZKDY370200TS10001]

35	2.1560.010.0	1	gasket 14.2 x 20
36	2.7099.035.0/10	1	sensor

9\_Y6983\_00\_0-C-001



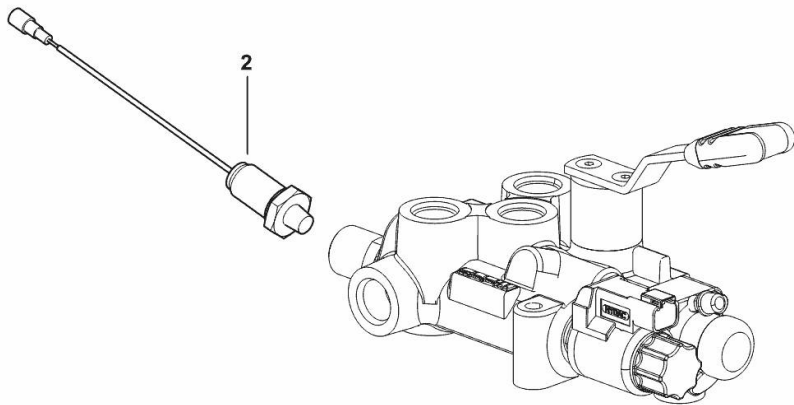
**PRESSURE SWITCH FOR HYDRAULIC TRAILER BRAKING SYSTEM - ITALY**

Fig.	P/n	QTY	Name
------	-----	-----	------

**Notes:**

[VIRTUS J 100 -> ZKDY370200TS10001]

2	2.7099.960.0	1	pressure switch 11 Bar
---	--------------	---	------------------------



9\_R8889\_10\_0-B-001

**PRESSURE SWITCH FOR AIR BRAKING SYSTEM**

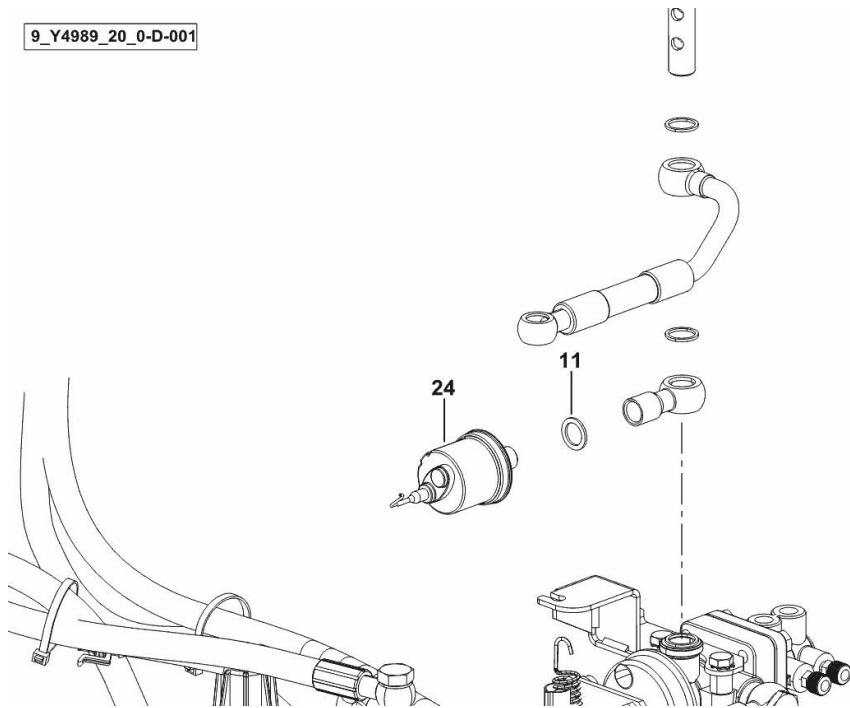
Fig.	P/n	QTY	Name
------	-----	-----	------

**Notes:**

- ITALY [VIRTUS J 100 -> ZKDY370200TS10001]

11	2.1560.010.0	13	gasket 14.2 x 20
24	0.011.9428.0	1	pressure switch

9\_Y4989\_20\_0-D-001

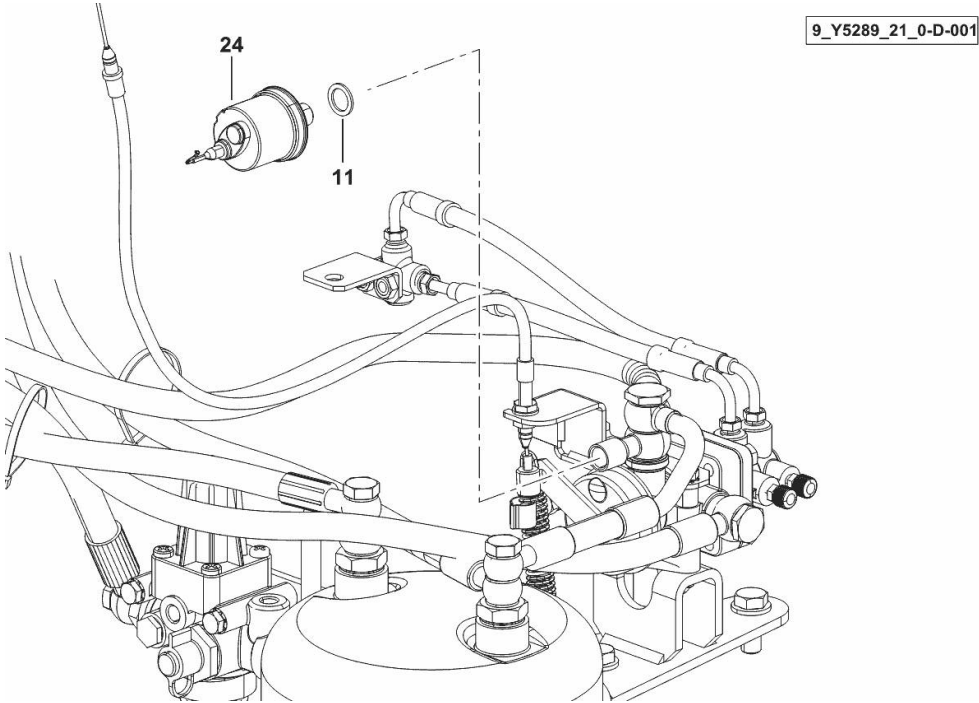


**PRESSURE SWITCH FOR AIR BRAKING SYSTEM**

Fig.	P/n	QTY	Name
------	-----	-----	------

Notes:  
- EXPORT D [VIRTUS J 100 -> ZKDY370200TS10001]

11	2.1560.010.0	19	gasket 14.2 x 20
24	0.011.9428.0	1	pressure switch



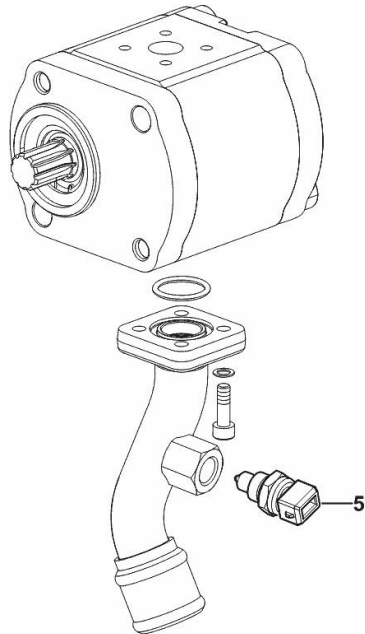
**FILTER - PUMP OIL INLET TEMPERATURE SENSOR 14 cc dx/rh/re**

Fig.	P/n	QTY	Name
------	-----	-----	------

**Notes:**

[VIRTUS J 100 -> ZKDY370200TS10001] -> 10001

5	2.7099.800.0	1	temperature gauge
---	--------------	---	-------------------



9\_Y3682\_04\_0-B-001

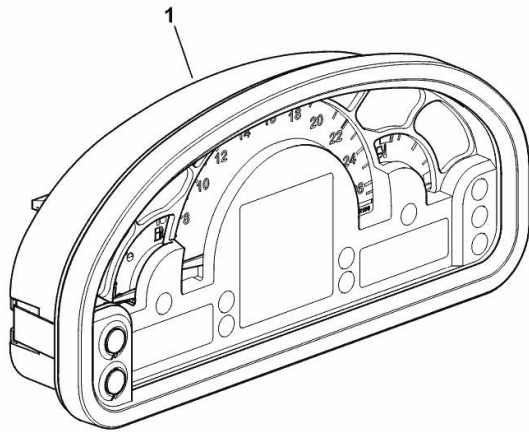
**DASHBOARD BOX**

Fig.	P/n	QTY	Name
------	-----	-----	------

**Notes:**

[VIRTUS J 100 -> ZKDY370200TS10001]

1	2.8339.285.0/60	1	multimeter
---	-----------------	---	------------



9\_Y3784\_21\_0-A-001

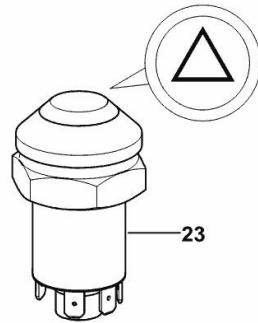
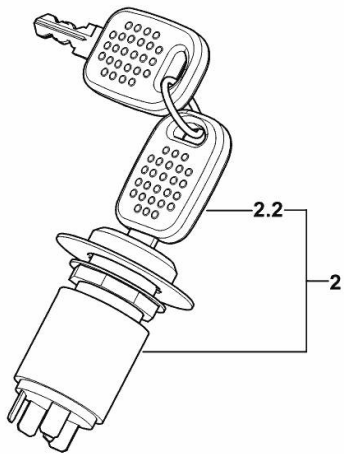
**IGNITION BLOCK AND EMERGENCY SWITCH**

Fig.	P/n	QTY	Name
------	-----	-----	------

**Notes:**

[VIRTUS J 100 -> ZKDY370200TS10001]

2	0.015.0485.4	1	start device
2.2	2.7439.023.0	2	key
23	2.7659.411.0	1	push-button



9\_Y4084\_00\_0-E-001



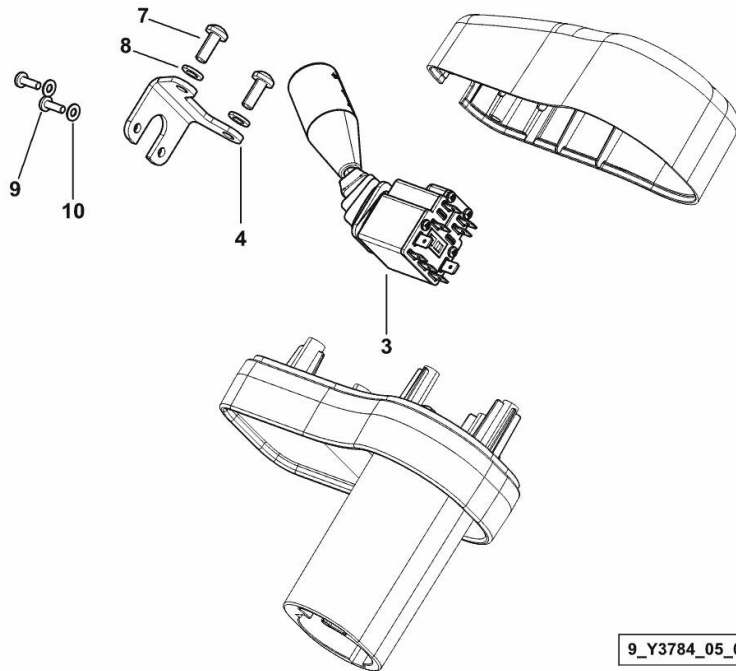
**STEERING COLUMN SWITCH UNIT**

Fig.	P/n	QTY	Name
------	-----	-----	------

**Notes:**

[VIRTUS J 100 -> ZKDY370200TS10001]

3	0.015.0359.4	1	lever
4	0.020.8966.0	1	bracket
7	2.0330.406.2	2	screw m 6 p.1.0 x 16
8	2.1310.002.2	2	flat washer 6.4x12.5
9	2.0332.204.2	2	screw 4 x 12
10	2.1310.028.2	2	flat washer



9\_Y3784\_05\_0-B-001

**SWITCH - ROAD LIGHTS - TOP**

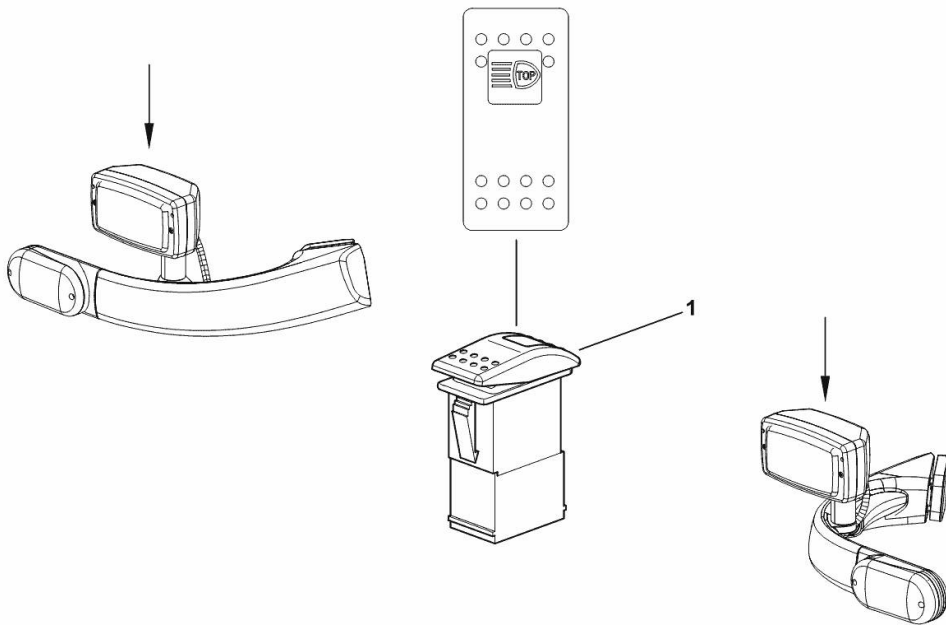
Fig.	P/n	QTY	Name
------	-----	-----	------

**Notes:**

[VIRTUS J 100 -> ZKDY370200TS10001]

1	2.7659.283.0/10	1	switch - "TOP" LIGHTS
---	-----------------	---	--------------------------

9\_Y7385\_17\_0-A-001

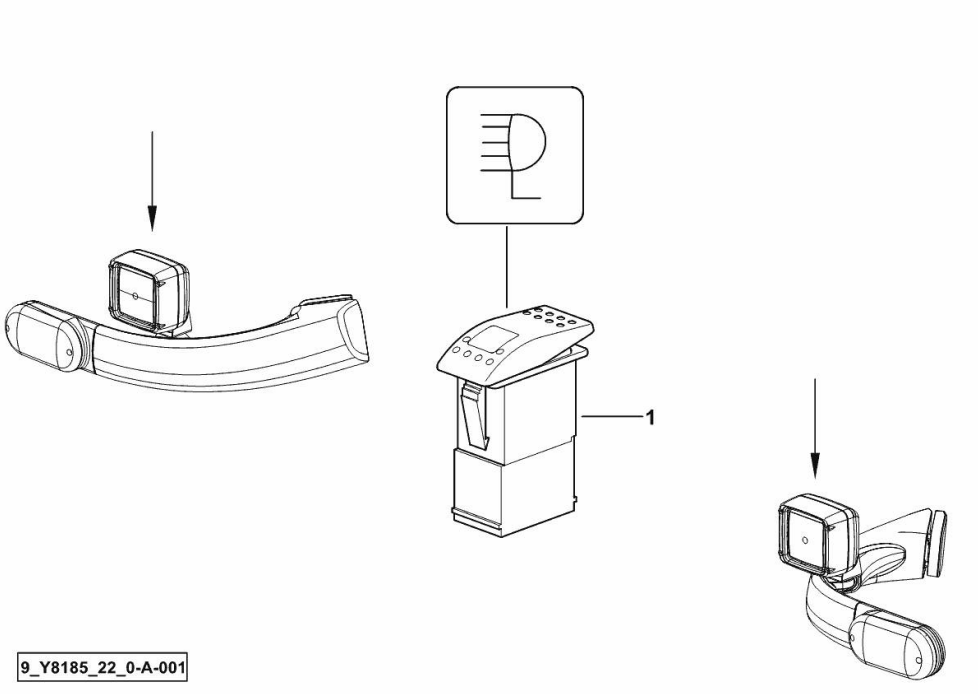


**CAB-MOUNTED FRONT WORKLIGHTS SWITCH**

Fig.	P/n	QTY	Name
------	-----	-----	------

Notes:  
[VIRTUS J 100 -> ZKDY370200TS10001]

1	2.7659.157.0	1	switch
---	--------------	---	--------



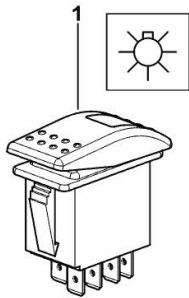
**CAB LIGHT SWITCH**

Fig.	P/n	QTY	Name
------	-----	-----	------

**Notes:**

[VIRTUS J 100 -> ZKDY370200TS10001]

1	2.7659.271.0	1	switch
---	--------------	---	--------



9\_Y6984\_23\_0-A-001

**LED LIGHTS SWITCH**

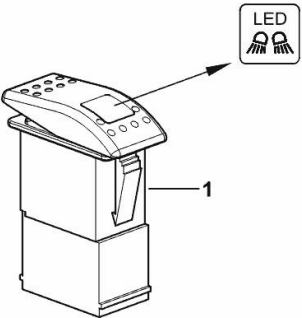
---

Fig.	P/n	QTY	Name
------	-----	-----	------

---

Notes:  
[VIRTUS J 100 -> ZKDY370200TS10001]

1	2.7659.470.0	1	switch
---	--------------	---	--------



9\_Y6984\_26\_0-A-001

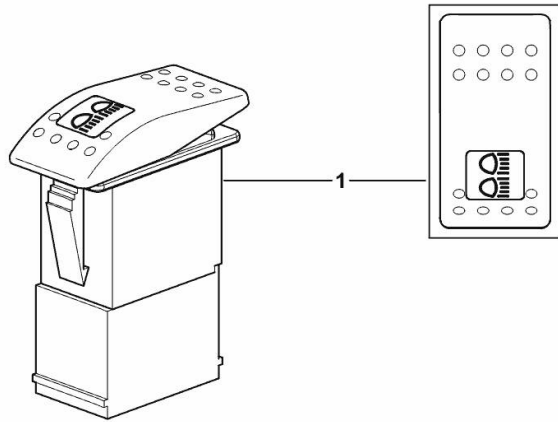
**WORKLIGHTS SWITCH**

Fig.	P/n	QTY	Name
------	-----	-----	------

**Notes:**

[VIRTUS J 100 -> ZKDY370200TS10001]

1	2.7659.156.0	1	switch
---	--------------	---	--------



9\_L1384\_01\_0-A-001

**SWITCH FOR ROTATING BEACON**

---

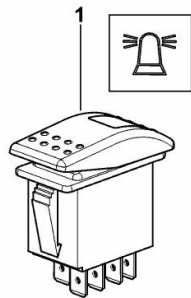
Fig.	P/n	QTY	Name
------	-----	-----	------

---

**Notes:**

[VIRTUS J 100 -> ZKDY370200TS10001]

1	2.7659.159.0	1	switch
---	--------------	---	--------



9\_Y6984\_25\_0-A-001

**REMOTE VALVE CONTROLS**

---

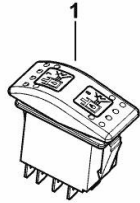
Fig.	P/n	QTY	Name
------	-----	-----	------

---

**Notes:**

- FOR MODELS WITH FRONT LIFT [VIRTUS J 100 -> ZKDY370200TS10001]

1	2.7659.453.0	1	switch
---	--------------	---	--------



9\_Y4984\_14\_0-A-001



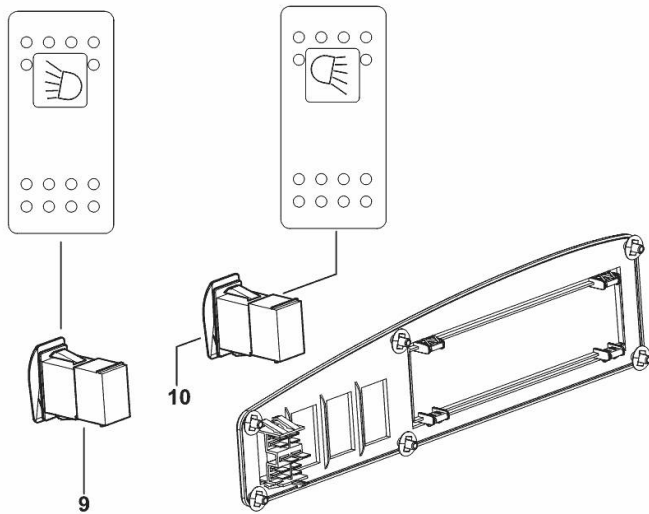
**SWITCHES FOR WORK LIGHTS ON ROOF**

Fig.	P/n	QTY	Name
------	-----	-----	------

**Notes:**

- FOR TYPES WITH 4 WORK LIGHTS ON CAB ROOF [VIRTUS J 100 -> ZKDY370200TS10001]

9	2.7659.154.0	1	switch - FOR FRONT HEAD LIGHTS
10	2.7659.155.0	1	switch - FOR BACK LIGHTS



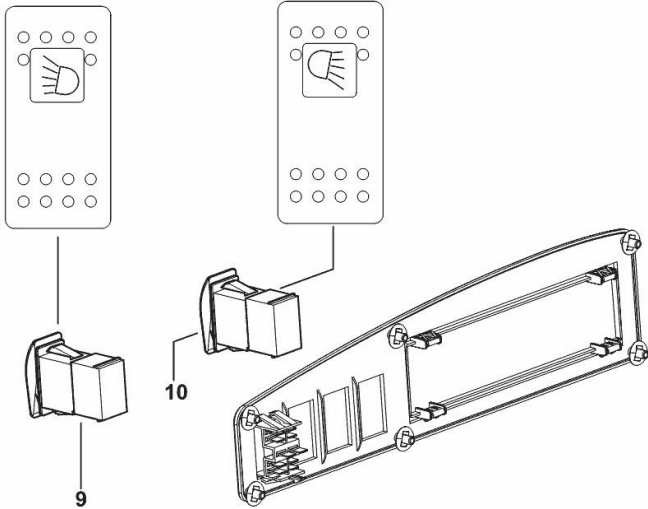
9\_Y4985\_25\_0-B-001

**SWITCHES FOR WORK LIGHTS ON ROOF**

Fig.	P/n	QTY	Name
------	-----	-----	------

Notes:  
[VIRTUS J 100 -> ZKDY370200TS10001]

9	2.7659.154.0	1	switch
10	2.7659.155.0	1	switch



9\_Y4985\_26\_0-B-001

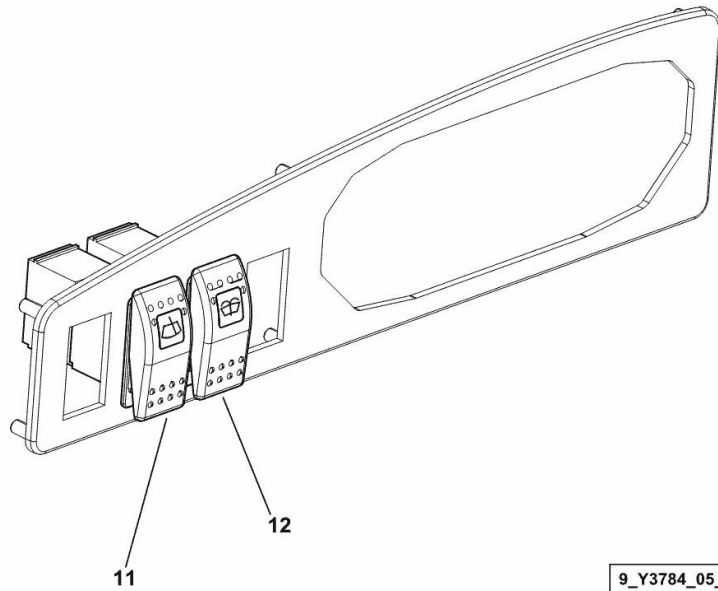
**WIPER SWITCHES**

Fig.	P/n	QTY	Name
------	-----	-----	------

**Notes:**

[VIRTUS J 100 -> ZKDY370200TS10001]

11	2.7659.224.0/10	1	switch
12	2.7659.223.0/10	1	push-button



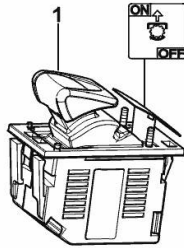
**FRONT PTO SWITCH**

Fig.	P/n	QTY	Name
------	-----	-----	------

**Notes:**

[VIRTUS J 100 -> ZKDY370200TS10001]

1	0.019.5354.0/10	1	switch P.T.O. -FRONT
---	-----------------	---	-------------------------



9\_Y6984\_11\_0-A-001

Thank you so much for reading.  
Please click the “Buy Now!”  
button below to download the  
complete manual.



After you pay.

You can download the most  
perfect and complete manual in  
the world immediately.

Our support email:

[ebooklibonline@outlook.com](mailto:ebooklibonline@outlook.com)