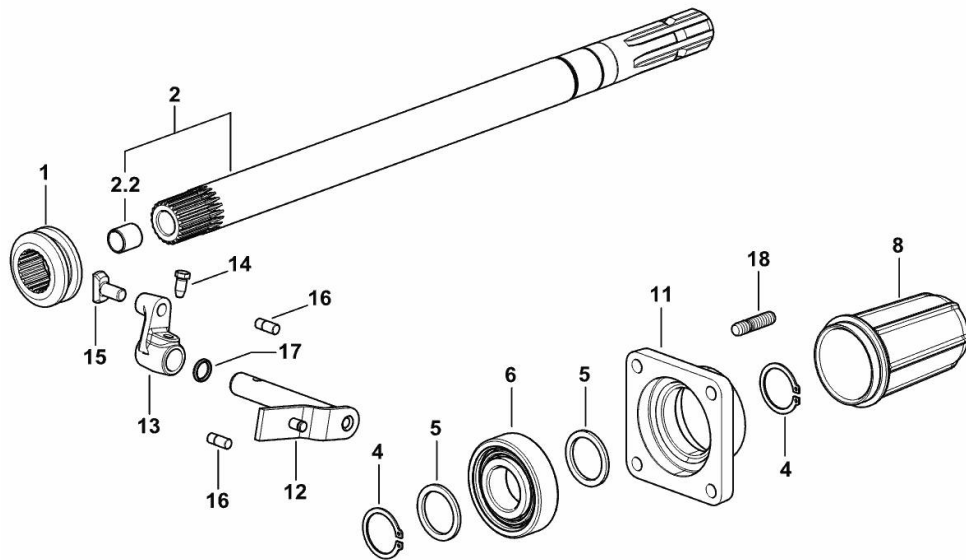


**P.T.O. - SYNCHRONIZED**

Fig.	P/n	QTY	Name
------	-----	-----	------

**Notes:**

[VIRTUS J 110 -> ZKDY410200TS10001]



1	0.255.3469.0	1	sleeve
2	0.020.7485.3	1	shaft
2.2	2.1559.023.0/10	1	special bushing 15.8x19x20
4	2.1410.014.1	2	circlip 35
5	2.1599.874.0	2	washer 35 x 45 x 3.0
6	2.2060.011.0	1	ball bearing 35 x 80 x 21
8	0.154.3655.0/10	1	guard
11	0.255.3150.0/20	1	cover
12	0.255.3468.2/20	1	lever
13	0.255.3470.0	1	lever
14	2.0399.019.1	1	screw m 8 p.1 x 16
15	0.001.5945.0/10	1	shoe
16	2.0439.002.1	2	stud bolt m 8 p.1.25 x 20
17	2.1530.033.0	1	oil seal 13.10x2.62
18	2.0432.155.7	4	stud bolt m 10 p.1.5 / p. 1.25 x 25

9\_Y5236\_05\_0-A-001

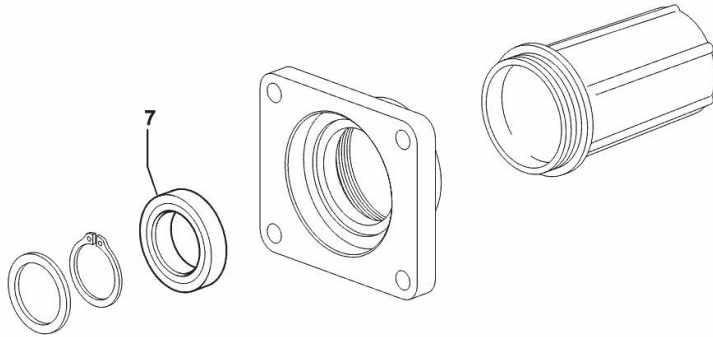
**P.T.O. - SYNCHRONIZED - WITH STANDARD SEALS**

Fig.	P/n	QTY	Name
------	-----	-----	------

**Notes:**

[VIRTUS J 110 -> ZKDY410200TS10001]

7	2.1520.017.0	1	oil seal 35x55x11
---	--------------	---	-------------------



9\_52636\_04\_0-A-001

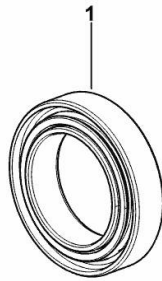
**WATERPROOF OIL SEAL FOR GROUND SPEED PTO**

Fig.	P/n	QTY	Name
------	-----	-----	------

**Notes:**

[VIRTUS J 110 -> ZKDY410200TS10001]

1	2.1529.107.0	1	special oil seal 35x55x12.5
---	--------------	---	-----------------------------



9\_Y8136\_05\_0-A-001

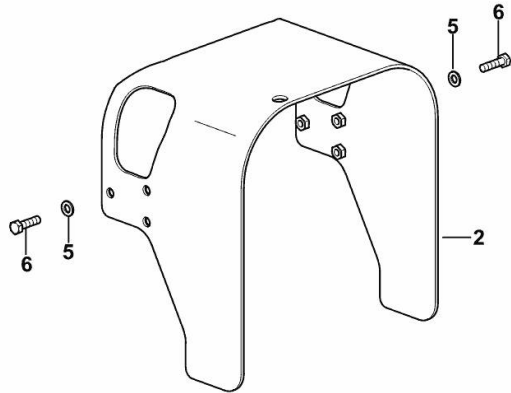
**GUARD PLATE**

Fig.	P/n	QTY	Name
------	-----	-----	------

**Notes:**

[VIRTUS J 110 -> ZKDY410100TS10001] [VIRTUS J 110 -> ZKDY410200TS10001]

2	0.019.5731.3/10	1	guard
5	2.1475.102.2	6	washer 8.4 x 16
6	2.0112.211.2	6	screw m 8 p.1.25 x 30



9\_W7331\_30\_0-B-001

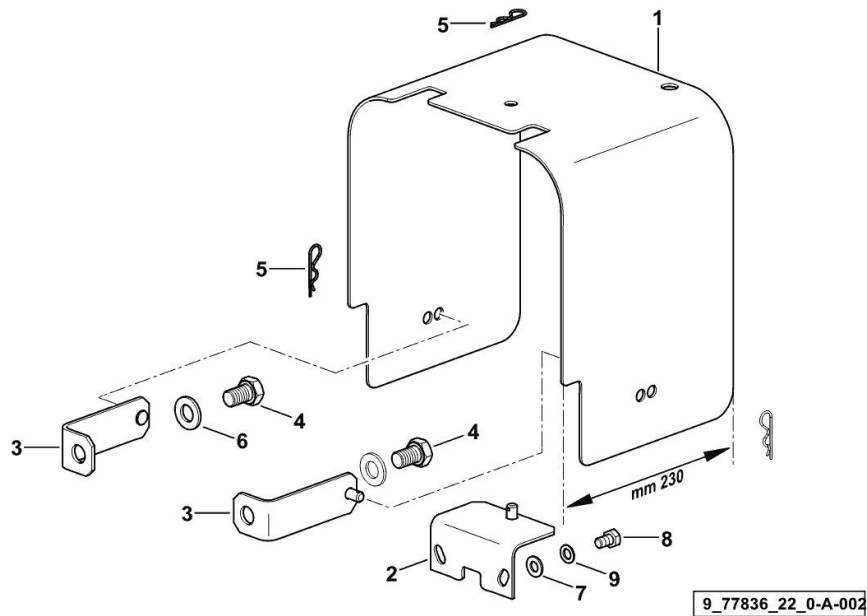
**P.T.O. SHAFT PROTECTOR REAR**

Fig.	P/n	QTY	Name
------	-----	-----	------

**Notes:**

[VIRTUS J 110 -> ZKDY410100TS10001] [VIRTUS J 110 -> ZKDY410200TS10001]

1	0.445.3650.0/70	1	small guard
2	0.255.3668.2/30	1	square
3	0.255.3669.2/10	2	square
4	2.0112.609.2	2	screw m 16 p.2 x 25
5	2.1699.180.2	3	pin
6	2.1475.006.2	2	spring washer 16
7	2.1310.006.2	2	flat washer 10.5x21
8	2.0112.305.2	2	screw m 10 p.1.5 x 16
9	2.1470.006.2	2	lock washer 10

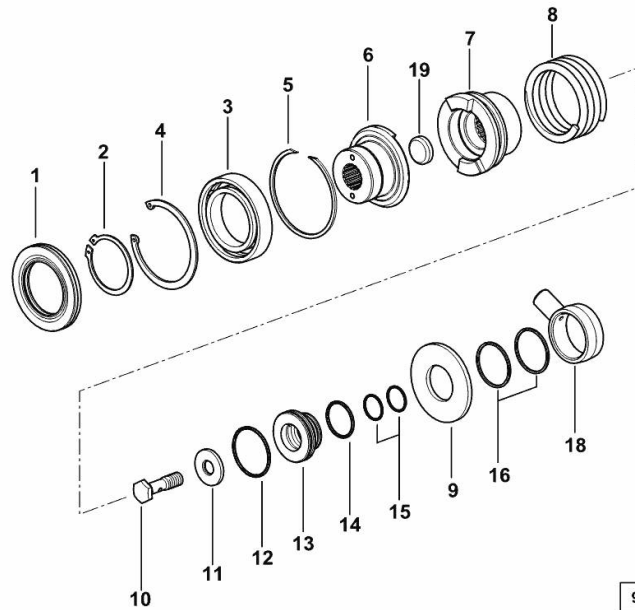


**4WD - ELECTROHYDRAULIC ENGAGEMENT CONTROL**

Fig.	P/n	QTY	Name
------	-----	-----	------

**Notes:**

[VIRTUS J 110 -> ZKDY410200TS10001]



1	0.008.4624.0	1	special oil seal 60x95x10
2	2.1410.024.1	1	circlip Ø 60 mm
3	2.2030.013.0	1	ball bearing 60x95x18
4	2.1411.038.1	1	circlip 95
5	2.1429.072.0	1	shoulder ring
6	0.013.9291.0/10	1	sleeve
7	0.013.9292.0	1	sleeve
8	2.4019.785.1/20	1	spring
9	2.1599.888.0/10	1	slewing ring 40x87x5.5
10	2.0399.306.0	1	screw
11	2.1499.226.0	1	washer 15x40x4
12	2.1530.125.0	1	oil seal 50.47x2.62
13	0.013.9295.0	1	ring
14	2.1530.095.0	1	oil seal 36.14x2.62
15	2.1531.066.0	2	oil seal 25.07x2.62
16	2.1569.109.0/10	2	gasket 46 x 50 x 2.0
18	0.008.4309.0/10	1	manifold
19	2.3171.012.4	1	plug Ø 30

**INDEPENDENT HAND BRAKE**

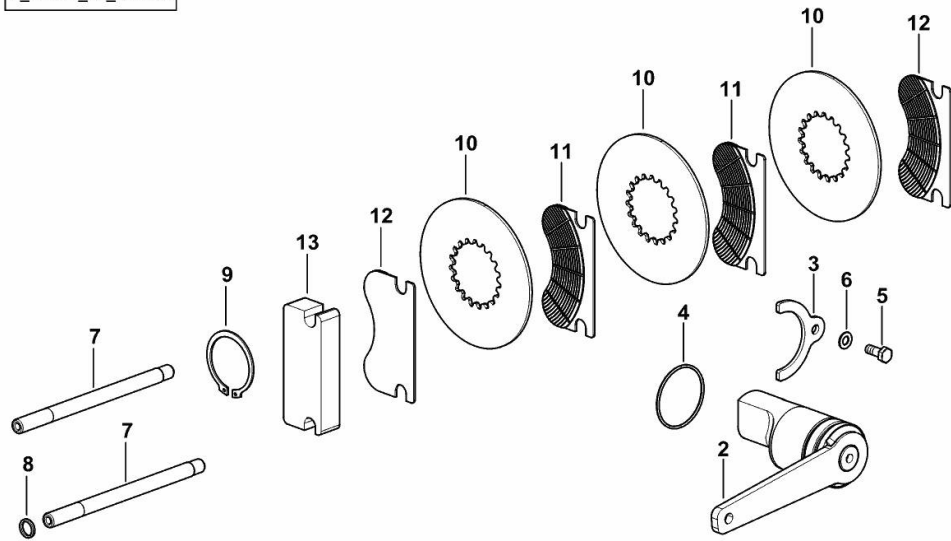
Fig.	P/n	QTY	Name
------	-----	-----	------

**Notes:**

[VIRTUS J 110 -> ZKDY410100TS10001] [VIRTUS J 110 -> ZKDY410200TS10001]

2	0.020.4359.2	1	lever
3	0.020.4389.0	1	small plate
4	2.1532.140.0	1	oil seal 56.82x2.62
5	2.0112.207.2	1	screw m 8 p 1.25 x 20
6	2.1475.002.2	1	conical washer 8
7	0.445.5450.0/10	2	small column
8	2.1530.034.0	1	oil seal 13.95x2.62
9	2.1410.022.1	1	circlip 55
10	0.008.4255.0	3	brake disc 145
11	0.171.5459.2	2	sector
12	0.171.5451.2	2	sector
13	0.008.4240.0/20	1	plate

9\_Y4054\_00\_0-B-001



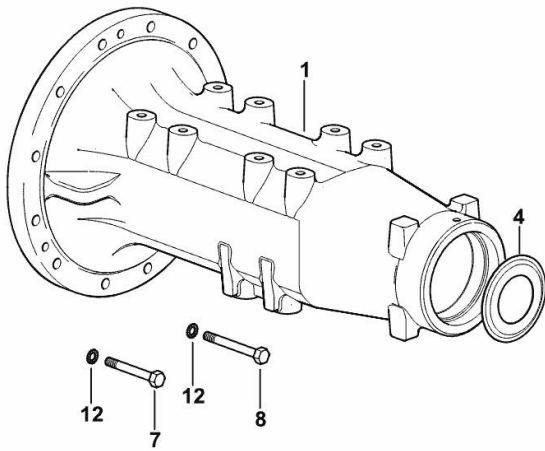
**REAR AXLE SX/LH/LI - DX/RH/RE**

Fig.	P/n	QTY	Name
------	-----	-----	------

**Notes:**

[VIRTUS J 110 -> ZKDY410100TS10001] 10001 <- [VIRTUS J 110 -> ZKDY410200TS10001] 10001 <-

1	0.445.4410.0/60	2	wheel support
4	0.445.4450.0	2	cup
7	2.0112.325.2	5	screw m 10 p.1.5 x 80
8	2.0112.327.2	1	screw m 10 p.1.5 x 90
12	2.1470.006.2	6	lock washer 10



9\_S6944\_10\_0-A-001



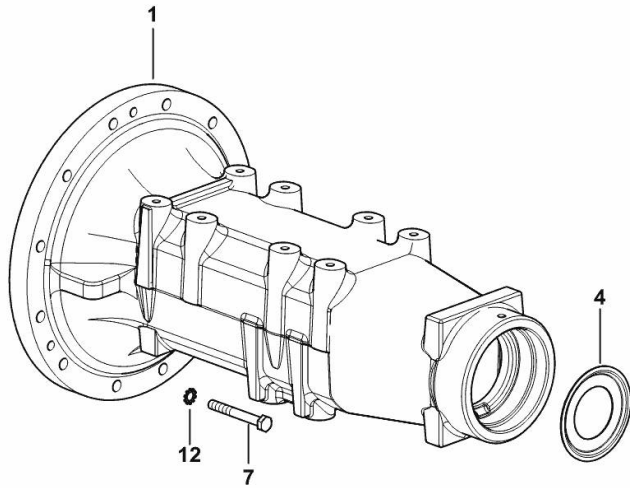
**REAR AXLE SX/LH/LI - DX/RH/RE**

Fig.	P/n	QTY	Name
------	-----	-----	------

**Notes:**

[VIRTUS J 110 -> ZKDY410100TS10001] -> 10002 [VIRTUS J 110 -> ZKDY410200TS10001] -> 10002

1	0.445.4410.0/60	2	wheel support
4	0.445.4450.0	2	cup
7	2.0112.325.2	2	screw m 10 p.1.5 x 80
12	2.1470.006.2	2	lock washer 10



9\_S6944\_10\_0-A-002

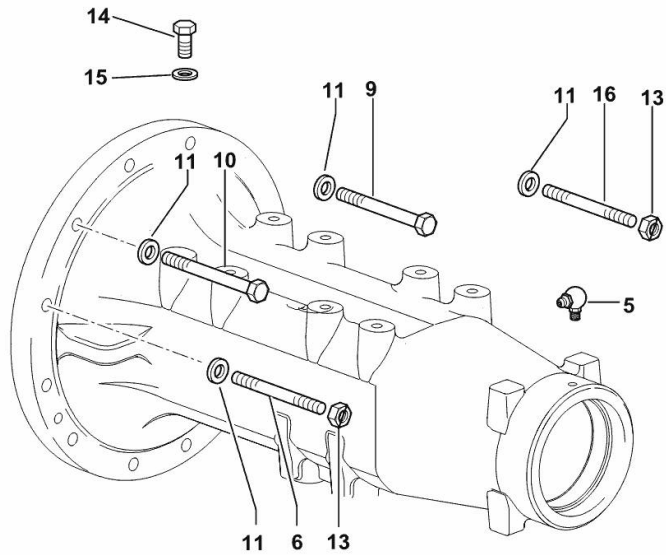
**REAR AXLE - MOUNTINGS**

Fig.	P/n	QTY	Name
------	-----	-----	------

**Notes:**

[VIRTUS J 110 -> ZKDY410100TS10001] [VIRTUS J 110 -> ZKDY410200TS10001]

5	2.3821.103.2	2	grease gun m 10 p.1x10
6	2.0422.426.7	6	stud bolt m 12 x 110
9	2.0112.431.2	14	screw m 12 p.1.75 x 110
10	2.0112.433.2	2	screw m 12 p.1.75x120
11	2.1475.004.7	24	washer 13 x 24
13	2.1011.107.2	8	nut m 12 p.1.75
14	2.0112.409.2	1	screw m 12 p.1.75 x 25
15	2.1310.007.2	1	flat washer 13 x 24
16	2.0422.427.7	2	stud bolt m 12 x 120



9\_H1544\_01\_0-A-001

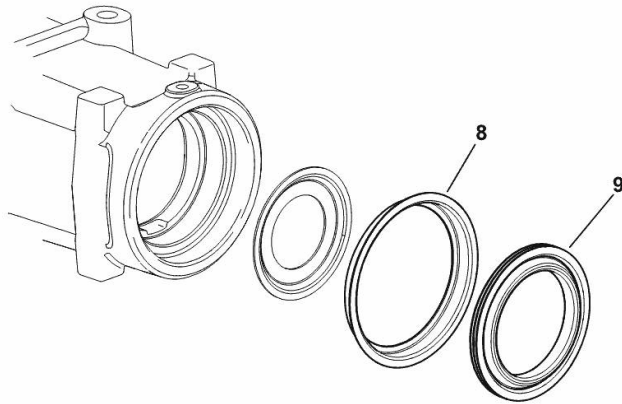
**PARTS SET FOR REAR AXLE - STANDARD SEAL**

Fig.	P/n	QTY	Name
------	-----	-----	------

**Notes:**

[VIRTUS J 110 -> ZKDY410100TS10001] [VIRTUS J 110 -> ZKDY410200TS10001]

8	0.255.4450.0/10	2	cup
9	2.1569.104.0	2	special oil seal 80 x 118.2 x 12



9\_64844\_11\_0-A-001

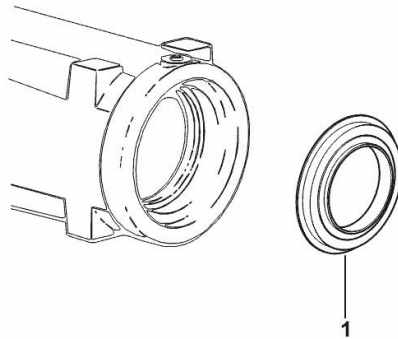
**PARTS SET FOR REAR AXLE - WATERPROOF SEAL**

Fig.	P/n	QTY	Name
------	-----	-----	------

**Notes:**

[VIRTUS J 110 -> ZKDY410200TS10001]

1	2.1529.105.0/10	2	special oil seal 80x129x15
---	-----------------	---	----------------------------



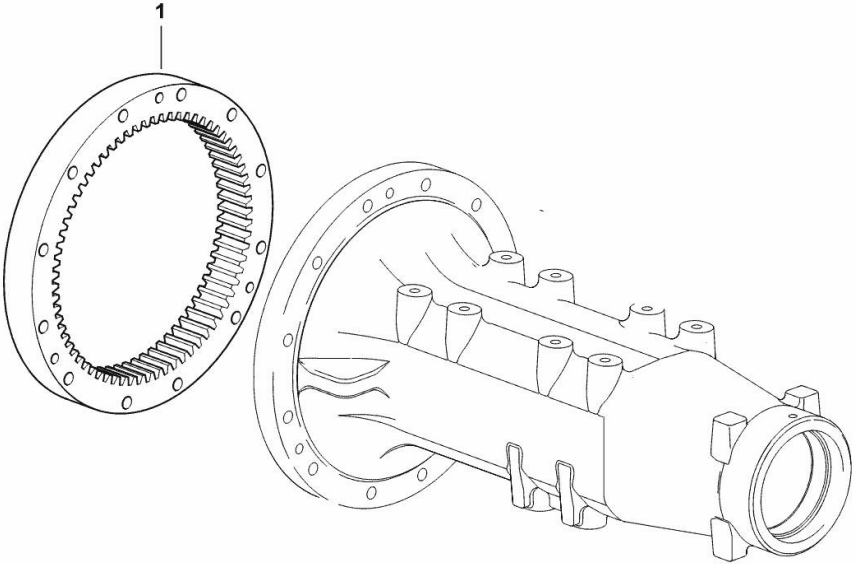
9\_Y8144\_01\_0-A-001

**REAR AXLE CROWN WHEEL SX/LH/LI - DX/RH/RE**

Fig.	P/n	QTY	Name
------	-----	-----	------

Notes:  
[VIRTUS J 110 -> ZKDY410100TS10001] [VIRTUS J 110 -> ZKDY410200TS10001]

1	0.445.4440.3	2	crown wheel
---	--------------	---	-------------



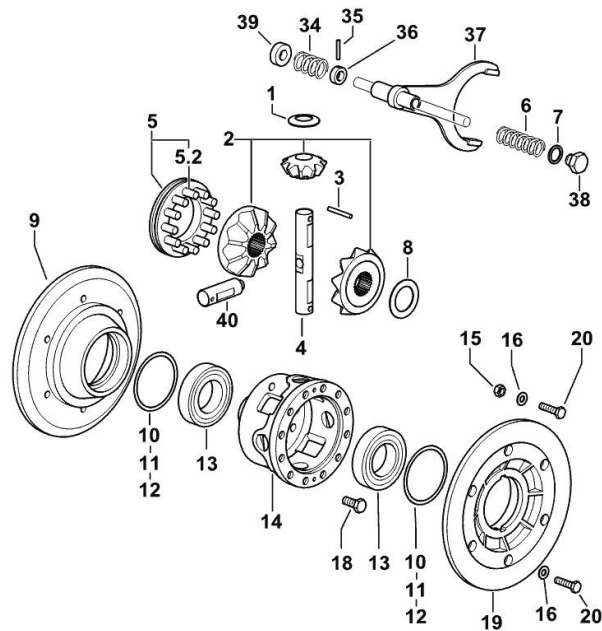
9\_62047\_10\_0-A-001

**4-PLANET PINION DIFFERENTIAL**

Fig.	P/n	QTY	Name
------	-----	-----	------

**Notes:**

[VIRTUS J 110 -> ZKDY410100TS10001] [VIRTUS J 110 -> ZKDY410200TS10001]



9\_B8635\_00\_0-A-001

1	0.157.3550.0	4	shoulder ring
2	0.011.7735.3	1	crown wheel
3	2.1631.519.0	2	roll pin 6x50
4	0.010.0614.0/10	1	pin
5	0.135.3527.3/20	1	sleeve
5.2	0.135.3550.0/10	12	pin
6	2.4019.225.1	1	spring 28 x 79 x 4.5
7	2.1560.014.0	1	washer 18.2 x 24
8	2.1599.427.0/10	2	shoulder ring 42x64x0.3
9	0.009.6540.0/30	1	flange dx/rh/re
10	2.1580.319.0	5	shim 86x98x0.5
11	2.1580.320.0	4	shim 86x98x0.2
12	2.1580.321.0	2	shim 86x98x0.05
13	2.2520.012.0	2	roller bearing iso 55 kb 02
14	0.011.7732.0/30	1	differential carrier
15	2.1011.106.2	2	nut m 10 p.1.5
16	2.1480.015.1	14	washer 10
18	2.0129.028.2	12	screw m 12 p.1.25x30
19	0.009.6541.0/30	1	flange sx/lh/li
20	2.0312.314.2	12	screw m 10 p.1.5 x 40
34	2.4019.339.1	1	spring 32x56.5x3.5
35	2.1631.415.2	1	pin 5x32
36	0.190.6858.0	1	spacer 16X28X10
37	0.445.3541.0/30	1	fork
38	2.3110.405.1	1	plug m 18 p.1.5 x 15
39	2.1549.146.0/10	1	spacer 16.5X33X12
40	0.010.0613.0	2	pin

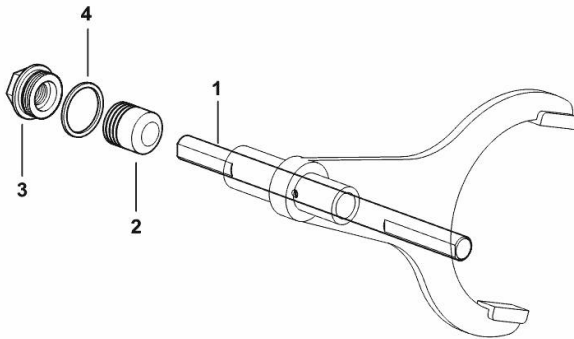
**DIFFERENTIAL LOCK CONTROL - ELECTROHYDRAUDLIC**

Fig.	P/n	QTY	Name
------	-----	-----	------

**Notes:**

[VIRTUS J 110 -> ZKDY410100TS10001] [VIRTUS J 110 -> ZKDY410200TS10001]

1	0.008.5636.0	1	rod mm 253
2	0.008.5650.0/20	1	piston
3	2.3199.176.0/10	1	plug m 30 p.1.5 / m 14 p.1.5
4	2.1560.023.0	1	copper gasket 30.3 x 36



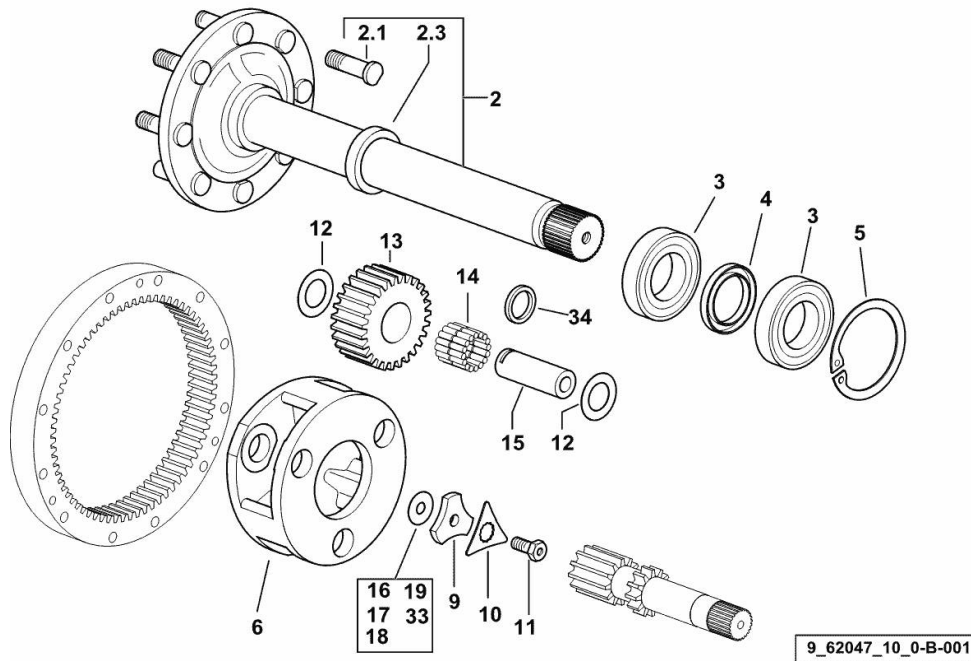
9\_61435\_02\_0-A-001

**REAR REDUCTION GEARS AND AXLE SHAFTS SX/LH/LI - DX/RH/RE**

Fig.	P/n	QTY	Name
------	-----	-----	------

**Notes:**

[VIRTUS J 110 -> ZKDY410100TS10001] [VIRTUS J 110 -> ZKDY410200TS10001]



2	0.445.4734.3/60	2	half-shaft
2.1	0.148.4737.0/20	8	small column m 20x68
2.3	0.445.4750.0	1	spacer
3	2.2520.013.0	4	roller bearing iso 60 kb 02
4	2.1510.331.0	2	oil seal 60x85x10
5	2.1410.045.1	2	circlip 125
6	0.008.5581.0/10	2	differential carrier
9	0.255.4745.0/10	2	spacer
10	0.008.5605.0	2	washer
11	2.0139.041.1	2	screw m 14 p.1.5 x 33
12	2.1589.170.0	12	shoulder ring 35x58x1
13	0.008.5582.0	6	planet gear
14	2.2999.197.0	6	roller cage
15	0.445.4725.0	6	pin
16	2.1589.106.0	6	shoulder ring 14.5 x 41 x 1.0
17	2.1589.107.0	2	shoulder ring 14.5 x 41 x 0.5
18	2.1589.108.0	2	shoulder ring 14.5 x 41 x 0.2
19	2.1589.109.0	2	shoulder ring 14.5 x 41 x 0.1
33	2.1589.246.0	2	shoulder ring 14.5 x 41 x 0.15
34	2.1549.138.0	6	spacer



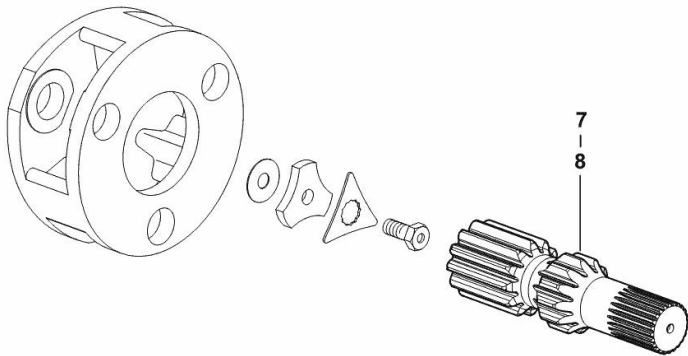
**HALF AXLES**

Fig.	P/n	QTY	Name
------	-----	-----	------

**Notes:**

[VIRTUS J 110 -> ZKDY410100TS10001] [VIRTUS J 110 -> ZKDY410200TS10001]

7	0.445.4730.0/10	1	half-shaft Z = 12, dx/rh/re
8	0.445.4731.0/10	1	half-shaft Z = 12, sx/lh/li



9\_62047\_00\_0-A-001

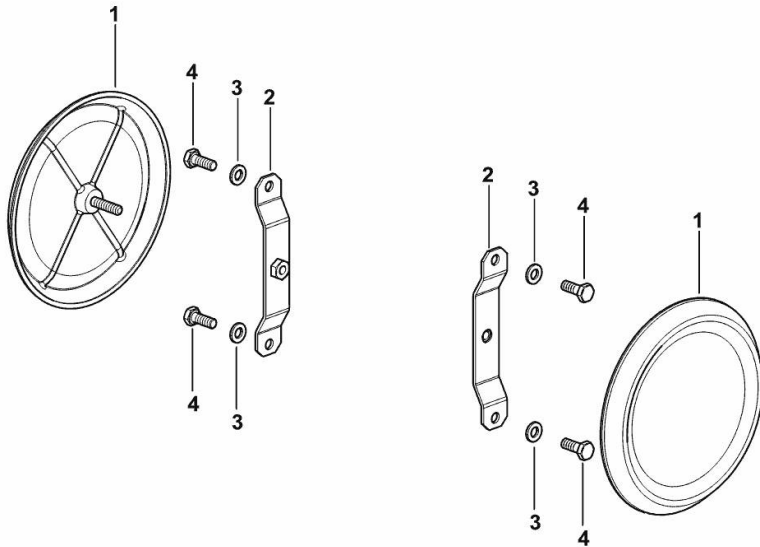
**REAR WHEEL HUB COVER**

Fig.	P/n	QTY	Name
------	-----	-----	------

**Notes:**

[VIRTUS J 110 -> ZKDY410200TS10001] [VIRTUS J 110 -> ZKDY410100TS10001]

1	0.019.4336.3	2	small cover SX/LH/LI - DX/RH/RE
2	0.019.5747.3	2	bracket
3	2.0112.005.2	4	screw m 6 p.1 x 16
4	2.1310.002.2	4	flat washer 6.4x12.5



9\_Y4947\_35\_0-A-001

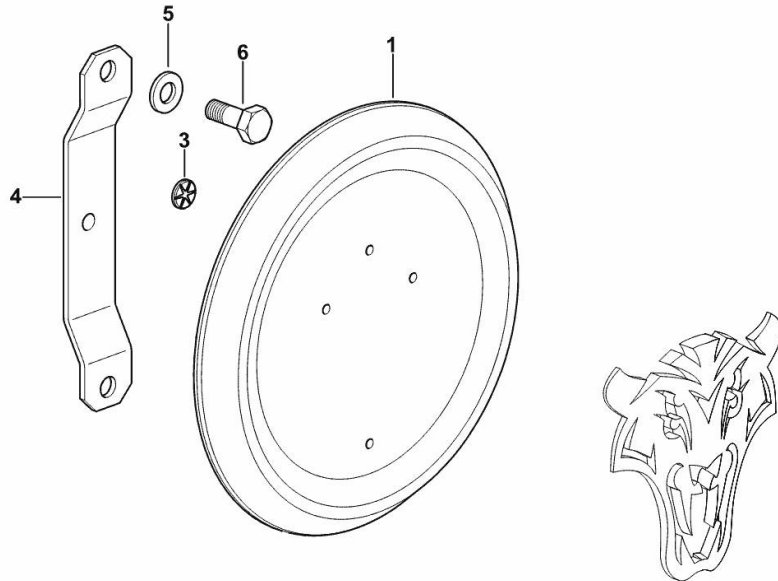
**REAR WHEEL HUB COVER**

Fig.	P/n	QTY	Name
------	-----	-----	------

**Notes:**

[VIRTUS J 110 -> ZKDY410200TS10001]

1	0.019.4336.7	2	cover
3	2.6999.076.0	8	spring washer
4	0.019.5747.3	2	bracket
5	2.1310.002.2	4	flat washer 6.4x12.5
6	2.0112.005.2	4	screw m 6 p.1 x 16



9\_Y6947\_35\_0-B-001

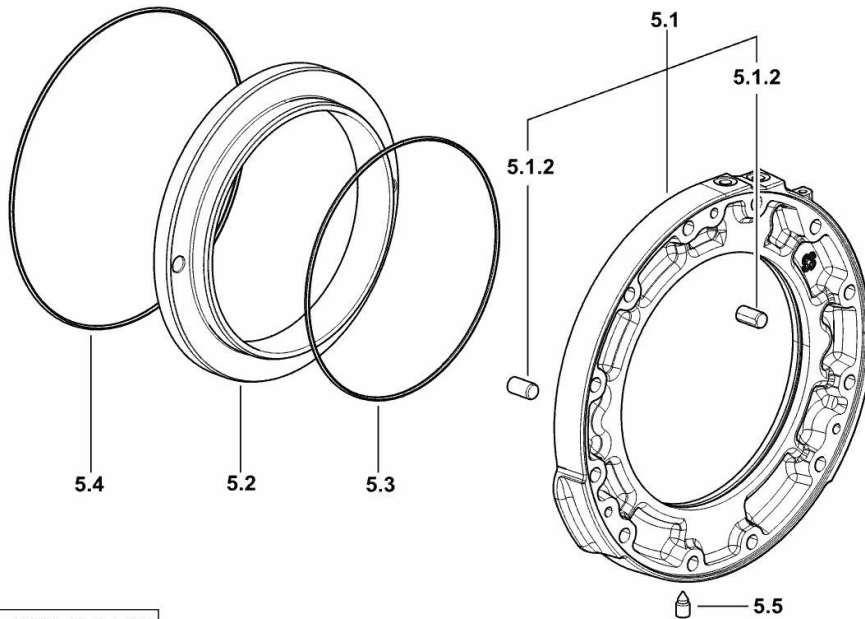
**REAR BRAKES**

Fig.	P/n	QTY	Name
------	-----	-----	------

**Notes:**

[VIRTUS J 110 -> ZKDY410100TS10001] [VIRTUS J 110 -> ZKDY410200TS10001]

5.1	0.008.5031.3/70	1	box
5.1.2	2.1699.190.0	2	pin 14x28
5.2	0.255.5448.0/30	1	piston
5.3	2.1539.180.0	1	special oil seal 228x3.53
5.4	2.1539.179.0	1	special oil seal 279x3.53
5.5	2.3139.013.7	1	plug m12x1,25



9\_40554\_10\_0-A-002

Thank you so much for reading.  
Please click the “Buy Now!”  
button below to download the  
complete manual.



After you pay.

You can download the most  
perfect and complete manual in  
the world immediately.

Our support email:

[ebooklibonline@outlook.com](mailto:ebooklibonline@outlook.com)