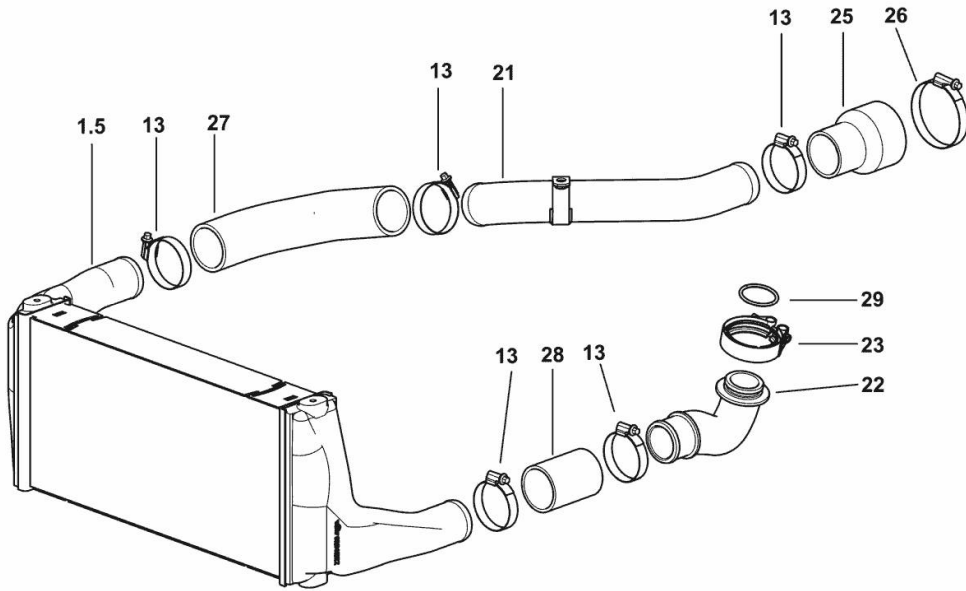


**INTERCOOLER**



9\_L8083\_00\_0-A-001

Fig.	P/n	QTY	Name
------	-----	-----	------

**Notes:**

[XB 100 TB ->1001]

1.5	0.014.8622.3	1	radiator
13	2.6851.006.0	7	clamp Ø 50/70
21	0.014.9366.3/10	1	tube
22	0.015.1779.0/10	1	flange
23	2.6859.112.0	1	clamp Ø 68 mm
25	0.014.9368.0/10	1	sleeve
26	2.6851.008.0	1	clamp Ø 70/90
27	0.014.9367.0/10	1	sleeve
28	0.015.5403.0	1	sleeve
29	2.1532.517.0	1	oil seal

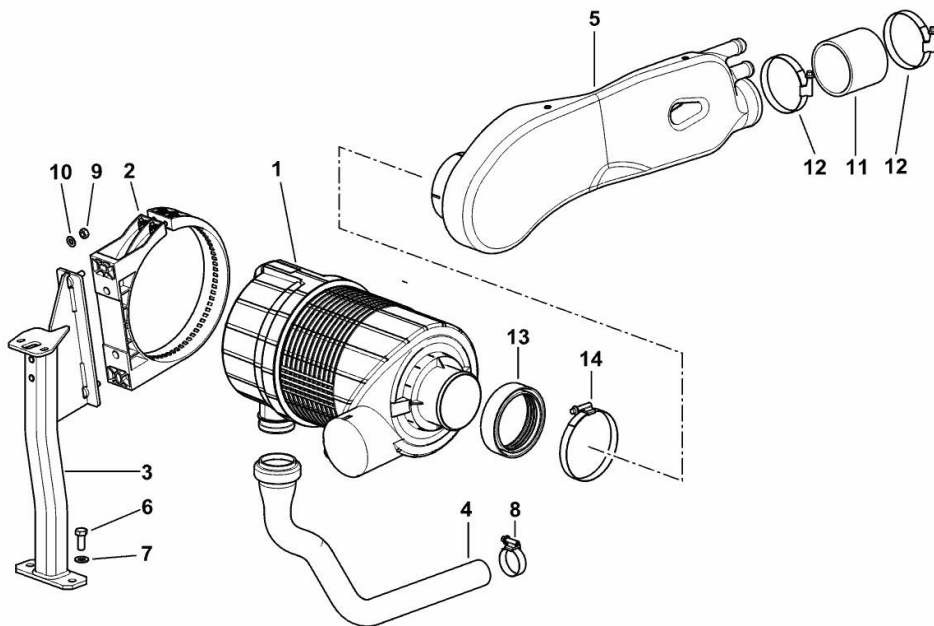
**8" AIR CLEANER WITH DUST EXHAUSTER**

Fig.	P/n	QTY	Name
------	-----	-----	------

**Notes:**

[XB 100 TB ->1001]

1	2.4249.718.0	1	air filter 8 " ☞ 2.4249.718.0
2	0.014.0679.4	1	support
3	0.015.8329.3/40	1	bracket
4	0.015.8327.0/10	1	tube
5	0.016.7714.2	1	sleeve
6	2.0112.309.2	2	screw m 10 p.1.5 x 25
7	2.1310.006.2	2	flat washer 10.5x21
8	2.6851.004.0	1	clamp Ø 32/50
9	2.1011.105.2	2	nut m 8 p.1.25
10	2.1310.004.2	2	flat washer 8.4x17
11	0.014.7967.0	1	pipe fitting
12	2.6851.009.0	2	clamp Ø 80/100
13	0.016.1885.0	1	ring
14	2.6851.010.0	1	clamp 90/110



9\_R1481\_01\_0-A-001

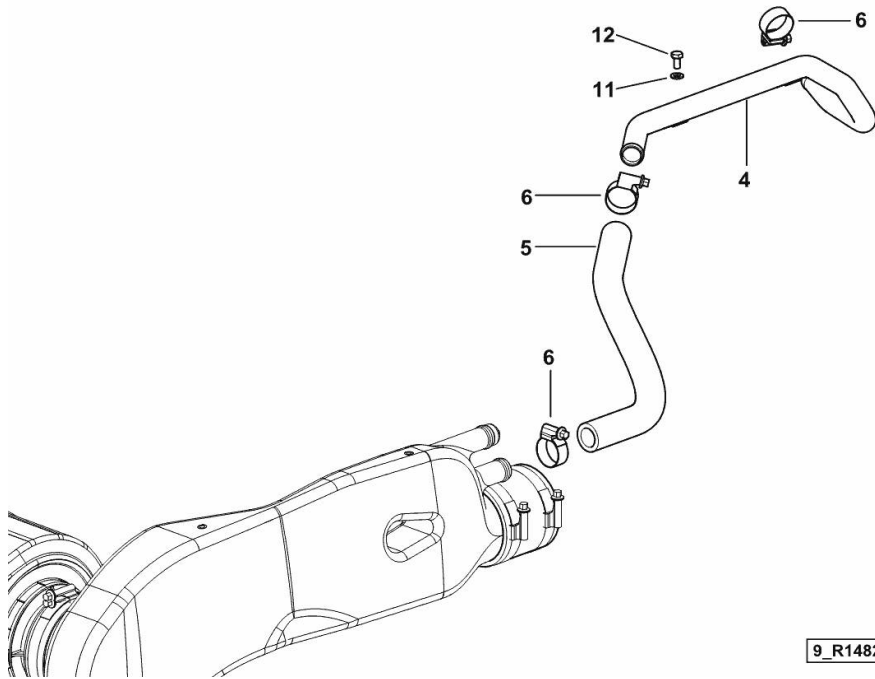
**OIL VAPOUR RECOVERY PIPES**

Fig.	P/n	QTY	Name
------	-----	-----	------

**Notes:**

[XB 100 TB ->1001]

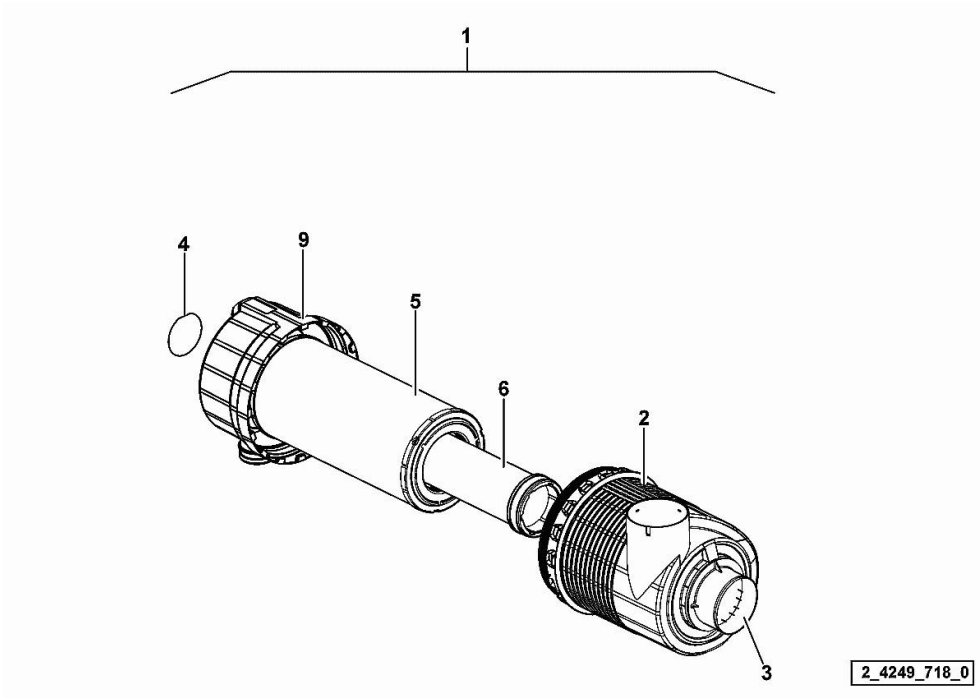
4	0.016.8074.2	1	tube
5	0.014.9301.0	1	tube
6	2.6851.003.0	3	clamp Ø 25/40
11	2.1310.002.2	3	flat washer 6.4x12.5
12	2.0112.003.2	3	screw m 6 p.1 x 12



9\_R1482\_05\_0-A-001

**AIR CLEANER**

<b>Fig.</b>	<b>P/n</b>	<b>QTY</b>	<b>Name</b>
1	2.4249.718.0	1	air filter 8 "
2	0.900.0300.7	1	box
3	0.900.1633.7	1	tube
4	0.000.0000.1	1	cannot be supplied
5	0.900.0301.0	1	external air filter element
6	0.900.0301.1	1	internal air filter element
9	0.900.0301.3	1	cover



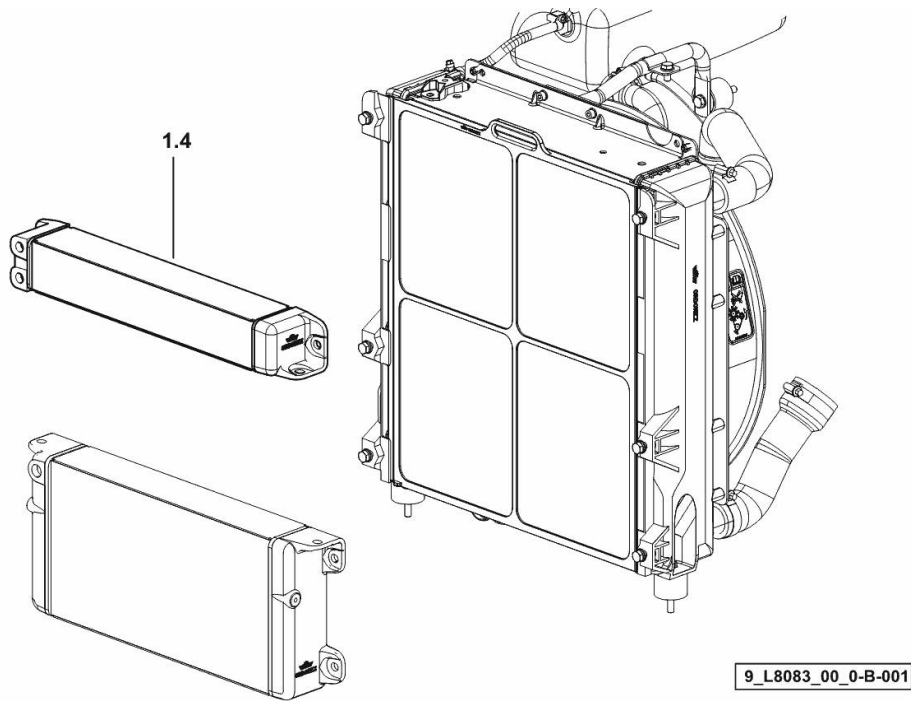
**FUEL COOLER**

Fig.	P/n	QTY	Name
------	-----	-----	------

**Notes:**

[XB 100 TB ->1001]

1.4	0.014.8032.3	1	radiator
-----	--------------	---	----------



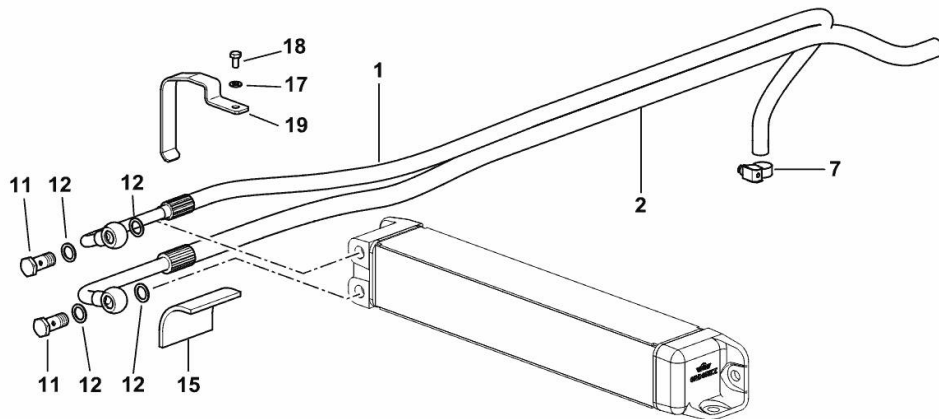
**FUEL COOLER PIPES**

Fig.	P/n	QTY	Name
------	-----	-----	------

**Notes:**

[XB 100 TB ->1001]

1	0.014.8520.3/20	1	tube
2	0.016.6194.3	1	tube
7	2.6851.019.0	2	clamp Ø 13/20
11	2.3335.053.2	2	pipe union m 14 p.1.5x32
12	2.1561.107.0	4	oil seal Ø 14 -B-
15	0.014.9300.0	1	insulator
17	2.1310.002.2	1	flat washer 6.4x12.5
18	2.0112.003.2	1	screw m 6 p.1 x 12
19	0.015.8799.0	1	bracket



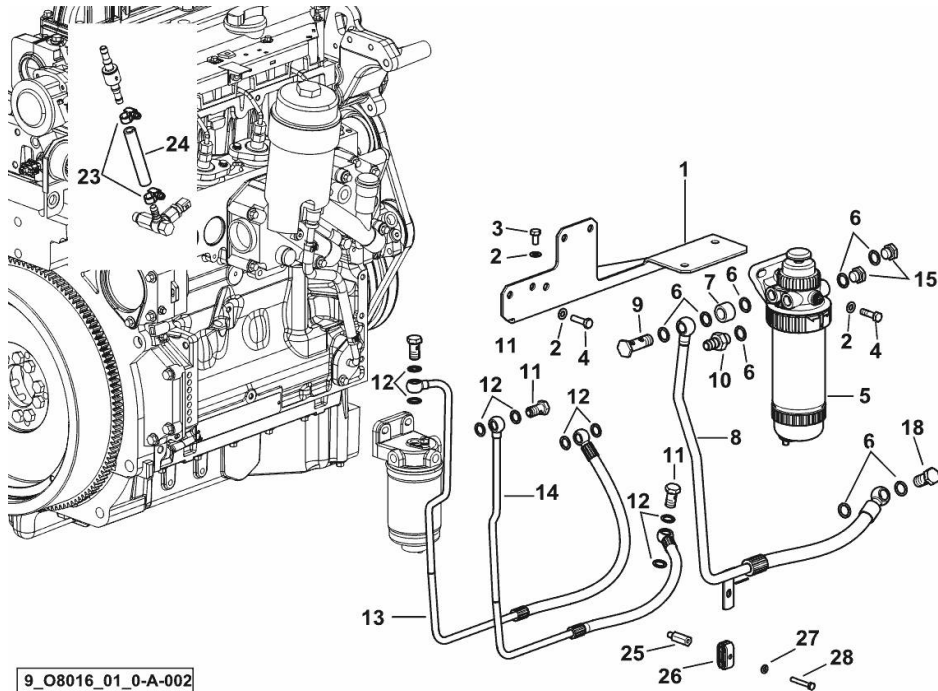
9\_P9781\_05\_0-A-001

**FUEL FILTER SUPPLY**

Fig.	P/n	QTY	Name
------	-----	-----	------

**Notes:**

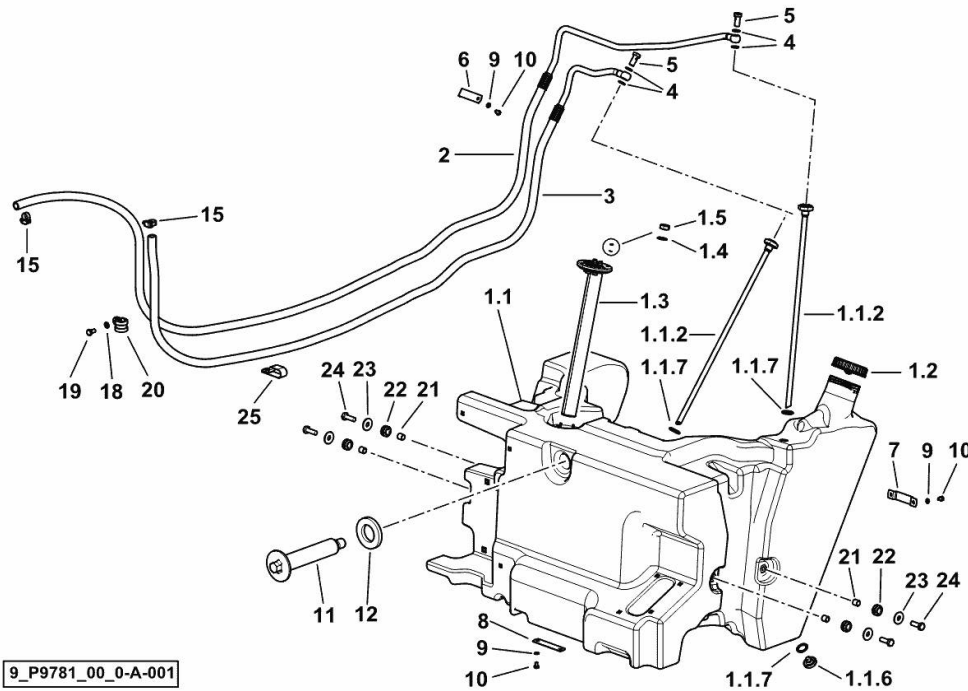
[XB 100 TB ->1001]



9\_O8016\_01\_0-A-002

1	0.014.8692.3/20	1	bracket
2	2.1310.004.2	6	flat washer 8.4x17
3	2.0112.205.2	2	screw m 8 p.1.25 x 16
4	2.0112.211.2	4	screw m 8 p.1.25 x 30
5	2.4319.290.0/10	1	precleaner ☞ 2.4319.290.0/10
6	2.1560.012.0	8	gasket 16.2 x 22
7	2.1549.335.2	1	spacer 26.9x5x18
8	0.017.7968.3	1	tube
9	2.3339.597.2/10	1	pipe union m 16 p.1.5x50
10	2.3339.322.2	1	pipe union
11	2.3332.004.2	3	pipe union m 14 p.1.5 x 27
12	2.1560.010.0	9	gasket 14.2 x 20
13	0.017.7970.3	1	tube
14	0.017.7969.3	1	tube
15	2.3110.404.2	2	plug m 16 p.1.5
18	2.3332.005.2	1	pipe fitting m 16 p.1.5
23	2.6851.019.0	2	clamp Ø 13/20
24	0.012.6449.0	0.1	tube
25	0.017.8246.0	1	small column
26	2.3321.007.0	1	collar Ø10/10
27	2.1310.002.2	1	flat washer 6.4x12.5
28	2.0114.015.2	1	screw m 6 p.1 x 40

**FUEL SYSTEM - TANK**



9\_P9781\_00\_0-A-001

Fig.	P/n	QTY	Name
------	-----	-----	------

**Notes:**

[XB 100 TB ->1001]

1.1	0.016.0158.3/20	1	fuel tank
1.1.2	0.016.1346.3	2	tube
1.1.6	0.011.5133.0	1	plug m 12
1.1.7	2.1530.056.0	3	oil seal 21.82 x 3.53
1.2	0.008.9280.4	1	plug
1.3	2.7059.002.0	1	float
1.4	2.1311.002.2	6	flat washer 4
1.5	2.1011.101.2	6	nut
2	0.016.4716.3/10	1	tube
3	0.016.4717.3/10	1	tube
4	2.1560.008.0	4	gasket 12.2 x 18
5	2.3339.472.2/10	2	pipe union m 12 p.1.25x26
6	0.016.4696.0	1	bracket
7	0.016.4693.0	1	bracket
8	0.016.4691.0	1	bracket
9	2.1470.002.2	5	lock washer 6
10	2.0112.002.2	5	screw m 6 p.1 x 10
11	0.016.1825.2	1	pin
12	0.016.1826.0	1	shim
15	2.6851.019.0	2	clamp Ø 13/20
18	2.1470.004.2	1	lock washer 8
19	2.0112.205.2	1	screw m 8 p.1.25 x 16
20	2.6839.051.0	1	clamp 20/20
21	2.1549.062.2	4	spacer 11x14x13
22	2.6569.011.0	4	rubber plug
23	2.1312.005.2	4	washer 10.2
24	2.0112.311.2	4	screw m 10 p.1.5 x 30
25	0.016.4667.0	1	bracket



**PRE-FILTER - COMPONENTS**

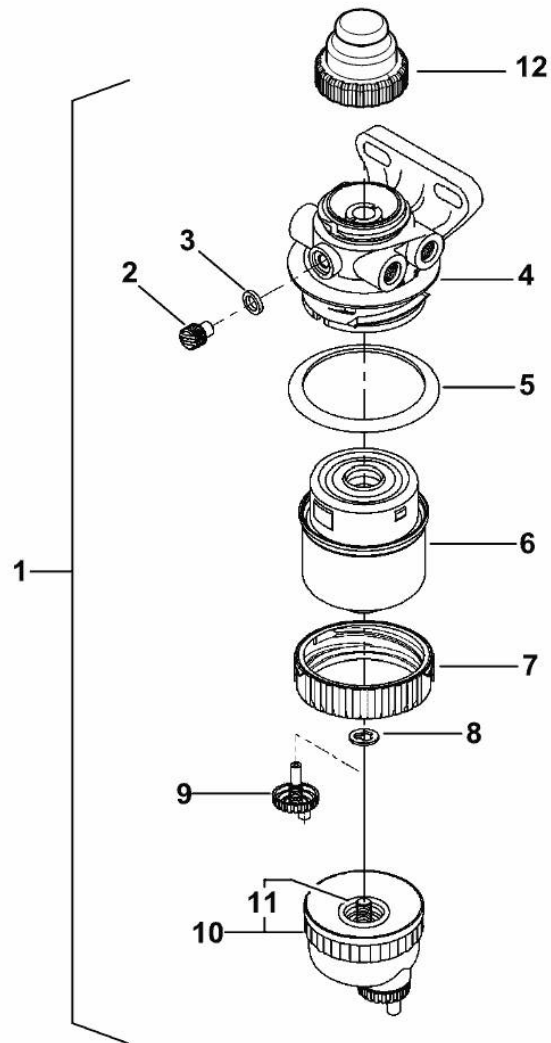


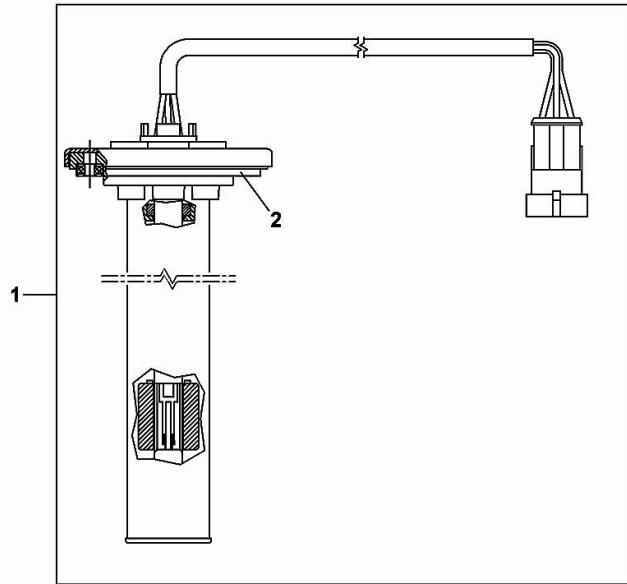
Fig.	P/n	QTY	Name
1	2.4319.290.0/10	1	precleaner
2	0.900.0789.7	1	valve
3	0.900.0789.8	1	ring
4	0.000.0000.1	1	cannot be supplied
5	0.900.0789.9	1	oil seal
6	0.900.0456.2	1	fuel filter element
7	0.900.0790.0	1	ring
8	0.900.0790.1	1	gasket
9	0.900.0790.2	1	valve
10	0.900.0790.4	1	small tank
11	0.900.0790.3	1	gasket
12	0.900.1450.6	1	small pump

2\_4319\_290\_0\_10

**FUEL LEVEL SENSOR**

Fig.	P/n	QTY	Name
1	2.7059.002.0	1	float
2	0.900.1581.8	1	gasket

2.7059.002.0



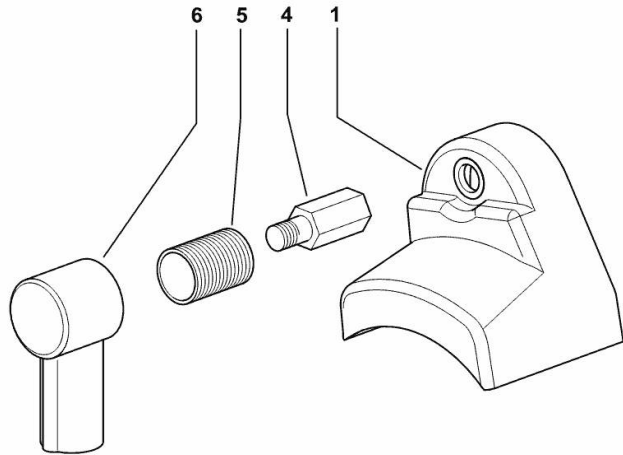
**STARTER MOTOR COVER**

Fig.	P/n	QTY	Name
------	-----	-----	------

**Notes:**

[XB 100 TB ->1001]

1	0.008.0391.0	1	cover
4	0.008.0616.0	1	pipe fitting m 10
5	0.008.0378.0	1	cover
6	2.6519.033.0	1	cap



9 R1484\_02\_0-B-001

Thank you so much for reading.  
Please click the “Buy Now!”  
button below to download the  
complete manual.



After you pay.

You can download the most  
perfect and complete manual in  
the world immediately.

Our support email:

[ebooklibonline@outlook.com](mailto:ebooklibonline@outlook.com)