

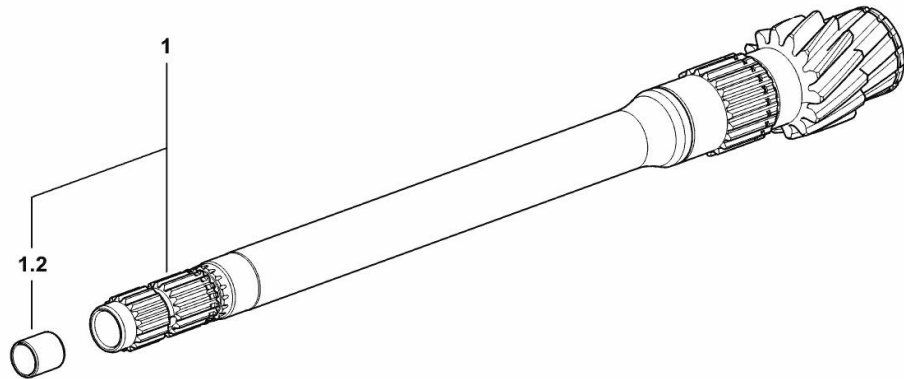
**PTO CONNECTION SHAFT**

<b>Fig.</b>	<b>P/n</b>	<b>QTY</b>	<b>Name</b>
-------------	------------	------------	-------------

**Notes:**

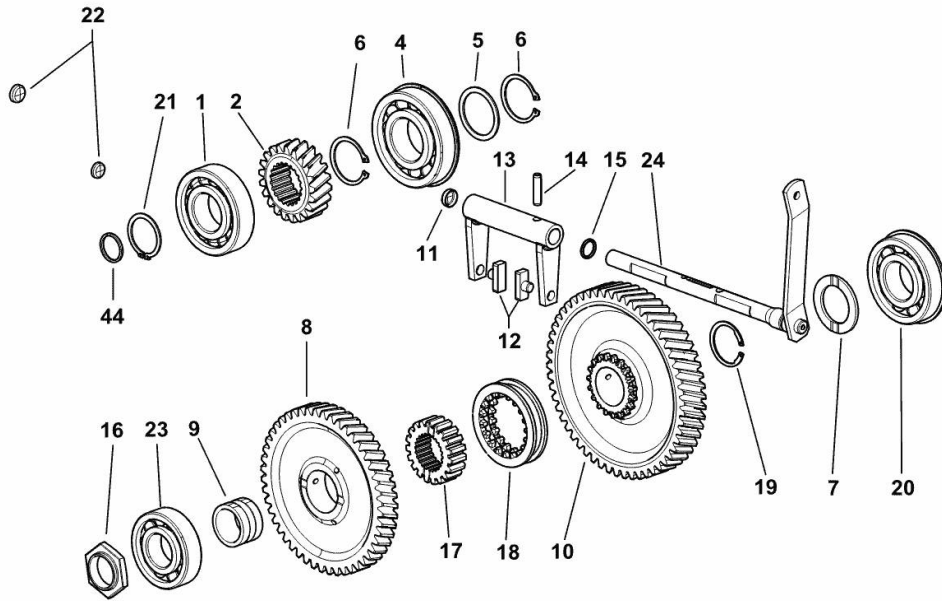
- FOR 540/N EXPORT U.S.A. [XB 100 TB ->5001] - 540/1000 [XB 100 TB ->5001]

1	0.010.8217.3	1	power take-off shaft
1.2	2.1559.023.0/10	1	special bushing 15.8x19x20



9\_R2236\_04\_0-A-001

**P.T.O. SHAFT 540 - 1000**



9\_R2236\_01\_0-A-001

Fig.	P/n	QTY	Name
------	-----	-----	------

**Notes:**

[XB 100 TB ->5001]

1	2.2060.012.0	1	ball bearing 40 x 90 x 23
2	0.010.8218.0	1	gear Z = 21
4	2.2062.013.0	1	ball bearing 45x100x25
5	2.1599.541.0	1	shoulder ring 45x55x2
6	2.1410.018.7	2	circlip 45
7	0.255.3450.0	1	shoulder ring 40 x 60 x 3.5
8	0.010.8219.0	1	gear Z = 48
9	0.255.3662.0	1	special bushing 35x44x27
10	0.010.8220.0	1	gear Z = 54
11	2.3171.006.4	1	plug Ø 16
12	0.255.6463.0	2	shoe
13	0.255.3658.2	1	fork
14	2.1630.713.0	1	roll pin 8x32
15	2.1530.038.0	1	oil seal 15.54x2.62
16	0.255.3661.0	1	ring nut m 35x1.5
17	0.255.3455.0	1	hub Z = 19
18	0.255.3438.0/20	1	sleeve Z = 19
19	2.1499.034.1	1	circlip 40 x 1.75
20	2.2062.012.0	1	ball bearing 40 x 90 x 23
21	2.1410.016.1	1	circlip 40
22	2.3171.007.4	2	plug Ø 18
23	2.2060.011.0	1	ball bearing 35 x 80 x 21
24	0.016.2240.0/20	1	lever
44	2.1530.062.0	1	oil seal 23.81 x 2.62

**4 SPEED P.T.O.**

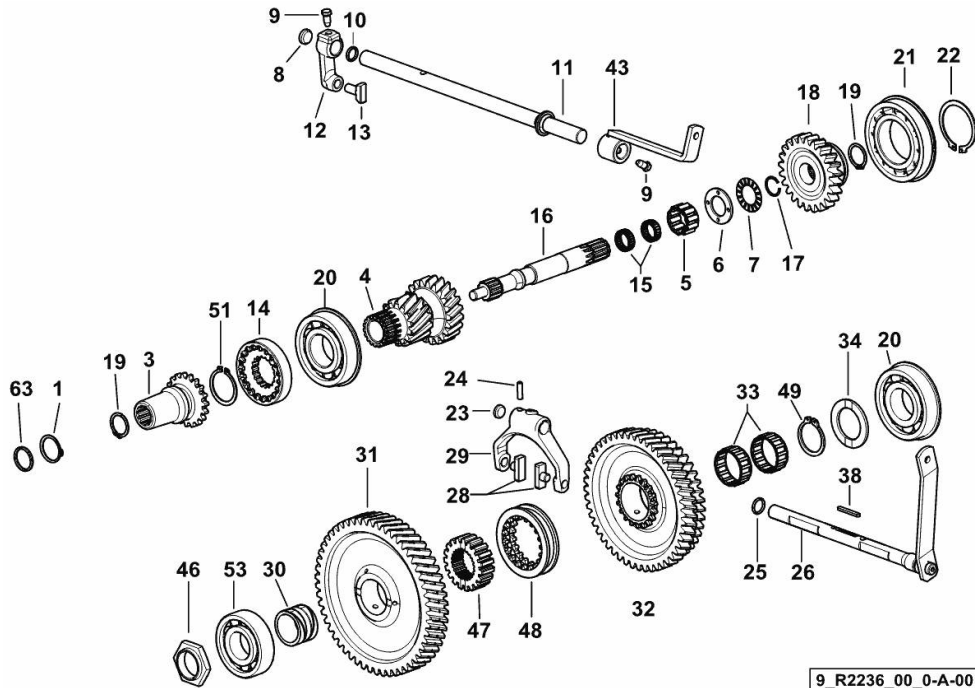


Fig.	P/n	QTY	Name
------	-----	-----	------

**Notes:**

[XB 100 TB ->5001]

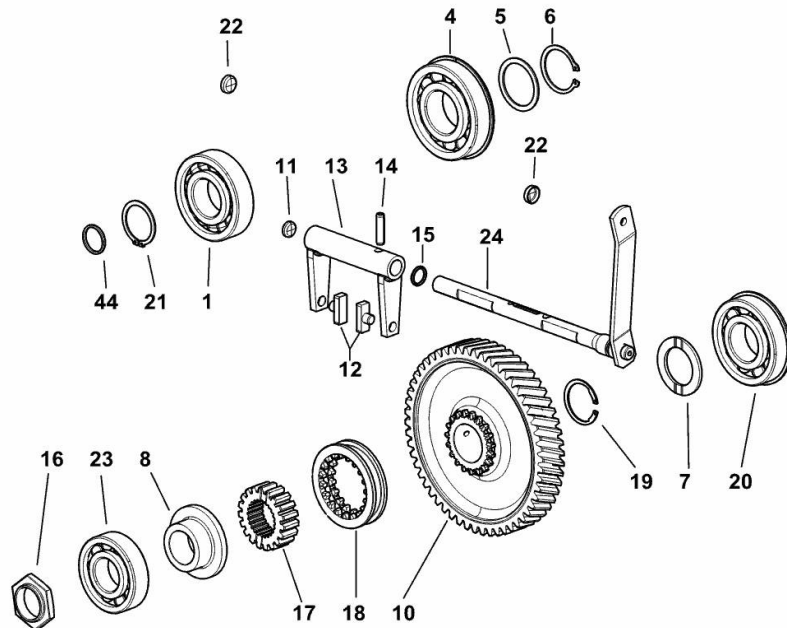
1	2.1410.012.1	1	circlip 30
3	0.009.6866.0	1	sleeve
4	0.009.6902.0	1	gear z = 14 - z = 21
5	2.2999.198.0	1	roller cage 25x37x20
6	2.1579.958.0	1	spacer 25 x 44 x 3
7	2.2999.229.0	1	roller cage 25x42x2
8	2.3171.007.4	1	plug Ø 18
9	2.0399.019.1	2	screw m 8 p.1 x 16
10	2.1530.033.0	1	oil seal 13.10x2.62
11	0.014.2729.3/20	1	rod
12	0.007.3492.0	1	small lever
13	0.001.5945.0/10	1	shoe
14	0.009.6867.0	1	crown wheel
15	2.2999.208.0	2	roller cage 20x26x8.8
16	0.007.3472.0/30	1	small shaft
17	2.1420.009.1	1	circlip a 22
18	0.009.6905.0	1	gear Z = 24
19	2.1410.010.1	2	circlip 25
20	2.2062.012.0	2	ball bearing 40 x 90 x 23
21	2.2043.015.0	1	bearing 55 x 100 x 21
22	2.1410.022.1	1	circlip 55
23	2.3171.006.4	1	plug Ø 16
24	2.0512.109.7	1	screw
25	2.1530.038.0	1	oil seal 15.54x2.62
26	0.016.2240.0/20	1	lever
28	0.255.6463.0	2	shoe
29	0.007.3487.0	1	fork
30	0.007.3471.0/10	1	special bushing
31	0.010.5366.0/10	1	gear Z = 54
32	0.009.6904.0/20	1	gear z = 48 - z = 43
33	2.2770.073.0	2	roller cage 40x47x18
34	0.255.3450.0	1	shoulder ring 40 x 60 x 3.5
38	2.1711.011.0	1	stick 5x3x36
43	0.014.2731.2	1	lever
46	0.255.3661.0	1	ring nut m 35x1.5
47	0.013.1306.0	1	hub Z = 19
48	0.255.3438.0/20	1	sleeve Z = 19
49	2.1412.015.7	1	circlip 40x2.5
51	2.1410.016.1	1	circlip 40
53	2.2060.011.0	1	ball bearing 35 x 80 x 21
63	2.1530.062.0	1	oil seal 23.81 x 2.62

**P.T.O. SHAFT 540/N**

Fig.	P/n	QTY	Name
------	-----	-----	------

**Notes:**

- FOR EXPORT U.S.A TYPES WITH FIXED OUTPUT SHAFT [XB 100 TB ->5001]



9\_R2236\_02\_0-A-001

1	2.2060.012.0	1	ball bearing 40 x 90 x 23
4	2.2062.013.0	1	ball bearing 45x100x25
5	2.1599.541.0	1	shoulder ring 45x55x2
6	2.1410.018.7	1	circlip 45
7	0.255.3450.0	1	shoulder ring 40 x 60 x 3.5
8	0.014.9042.0	1	spacer
10	0.010.8220.0	1	gear Z = 54
11	2.3171.006.4	1	plug Ø 16
12	0.255.6463.0	2	shoe
13	0.255.3658.2	1	fork
14	2.1630.713.0	1	roll pin 8x32
15	2.1530.038.0	1	oil seal 15.54x2.62
16	0.255.3661.0	1	ring nut m 35x1.5
17	0.255.3455.0	1	hub Z = 19
18	0.255.3438.0/20	1	sleeve Z = 19
19	2.1499.034.1	1	circlip 40 x 1.75
20	2.2062.012.0	1	ball bearing 40 x 90 x 23
21	2.1410.016.1	1	circlip 40
22	2.3171.007.4	2	plug Ø 18
23	2.2060.011.0	1	ball bearing 35 x 80 x 21
24	0.016.2240.0/20	1	lever
44	2.1530.062.0	1	oil seal 23.81 x 2.62

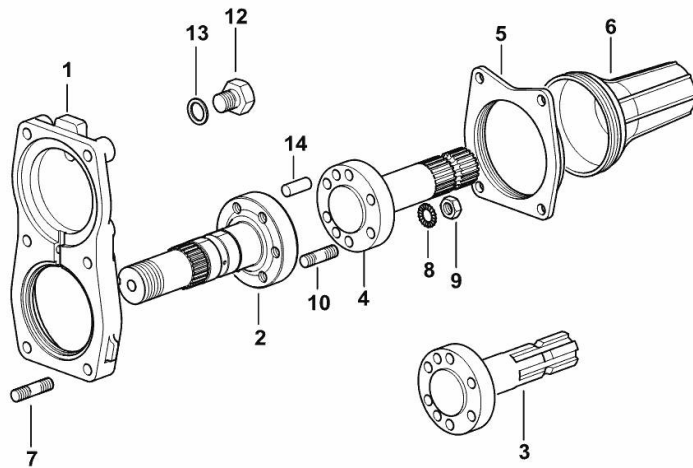
**PTO - 2-SPEED WITH INSERTED END SHAFT**

Fig.	P/n	QTY	Name
------	-----	-----	------

**Notes:**

[XB 100 TB ->5001]

1	0.009.6901.0/20	1	cover
2	0.255.3663.0/30	1	shaft
3	0.167.3660.0/30	1	power take-off shaft 1" 3/8, Z = 6
4	0.163.3671.0/40	1	power take-off shaft 1" 3/8, Z = 21
5	0.445.3151.0/10	1	flange
6	0.008.0757.0	1	guard
7	2.0432.161.7	6	stud bolt m 10 p.1.5 / p.1.25 x 40
8	2.1470.006.2	6	lock washer 10
9	2.1011.421.2	6	nut m 10 p.1.25
10	2.0432.155.7	6	stud bolt m 10 p.1.5 / p. 1.25 x 25
12	2.3110.403.1	1	plug m 14 p.1.5x12
13	2.1560.010.0	1	gasket 14.2 x 20
14	2.1651.811.0	2	cylindrical plug 10x24



9\_B8636\_11\_0-A-001

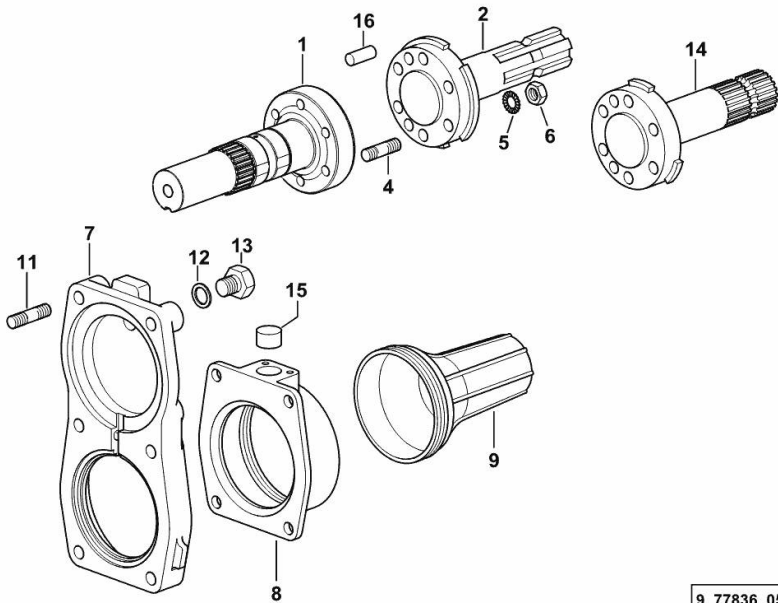
**PTO - 2-SPEED WITH INSERTED END SHAFT**

Fig.	P/n	QTY	Name
------	-----	-----	------

**Notes:**

- EXPORT U.S.A. [XB 100 TB ->5001]

1	0.255.3663.0/30	1	shaft
2	0.013.0259.0	1	power take-off shaft z = 6
4	2.0432.159.7	6	stud bolt m 10 p.1.5 / p.1.25 x 35
5	2.1470.006.2	6	lock washer 10
6	2.1011.421.2	6	nut m 10 p.1.25
7	0.009.6901.0/20	1	cover
8	0.011.0795.0/10	1	flange
9	0.008.0757.0	1	guard
11	2.0432.161.7	6	stud bolt m 10 p.1.5 / p.1.25 x 40
12	2.1560.010.0	1	gasket 14.2 x 20
13	2.3110.403.1	1	plug m 14 p.1.5x12
14	0.013.0258.0	1	power take-off shaft Z = 21
15	2.3171.008.4	1	plug 20
16	2.1651.811.0	2	cylindrical plug 10x24



9\_77836\_05\_0-A-001

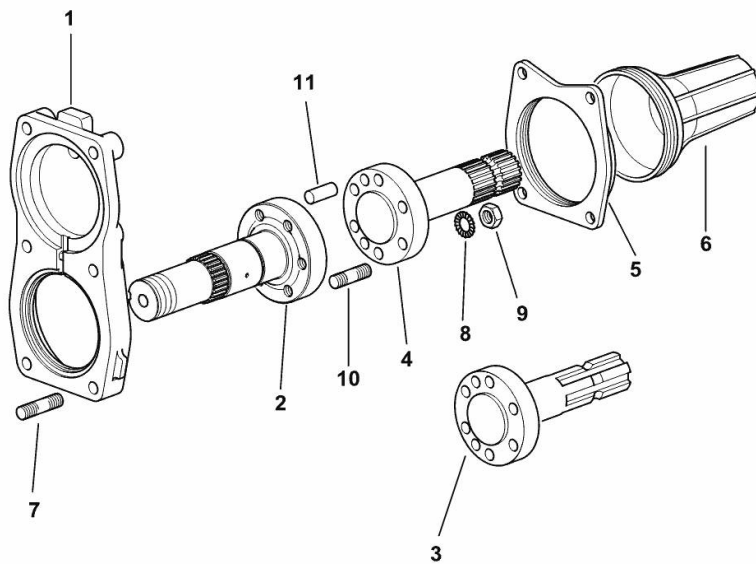
**P.T.O. - WITH INSERTED END SHAFTS**

Fig.	P/n	QTY	Name
------	-----	-----	------

**Notes:**

[XB 100 TB ->5001]

1	0.009.6901.0/20	1	cover
2	0.007.3474.0/20	1	power take-off shaft
3	0.167.3660.0/30	1	power take-off shaft 1" 3/8, Z = 6
4	0.163.3671.0/40	1	power take-off shaft 1" 3/8, Z = 21
5	0.445.3151.0/10	1	flange
6	0.008.0757.0	1	guard
7	2.0432.161.7	6	stud bolt m 10 p.1.5 / p.1.25 x 40
8	2.1470.006.2	6	lock washer 10
9	2.1011.421.2	6	nut m 10 p.1.25
10	2.0432.155.7	6	stud bolt m 10 p.1.5 / p. 1.25 x 25
11	2.1651.811.0	2	cylindrical plug 10x24



9\_B8636\_10\_0-A-001

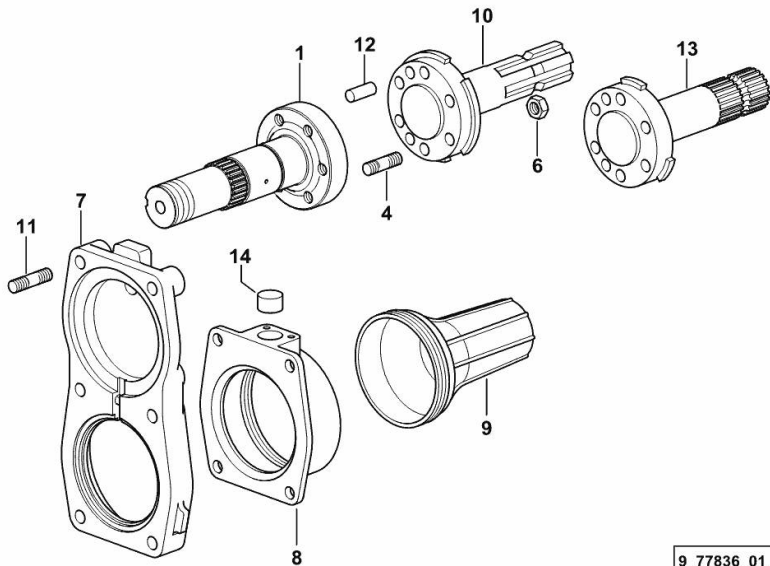
**P.T.O - 4-SPEED WITH INSERTED END SHAFT**

Fig.	P/n	QTY	Name
------	-----	-----	------

**Notes:**

- EXPORT U.S.A. [XB 100 TB ->5001]

1	0.007.3474.0/20	1	power take-off shaft
4	2.0432.159.7	6	stud bolt m 10 p.1.5 / p.1.25 x 35
6	2.1011.421.2	6	nut m 10 p.1.25
7	0.009.6901.0/20	1	cover
8	0.011.0795.0/10	1	flange
9	0.008.0757.0	1	guard
10	0.013.0259.0	1	power take-off shaft z = 6
11	2.0432.161.7	6	stud bolt m 10 p.1.5 / p.1.25 x 40
12	2.1651.811.0	2	cylindrical plug 10x24
13	0.013.0258.0	1	power take-off shaft Z = 21
14	2.3171.008.4	1	plug 20



9\_77836\_01\_0-A-001



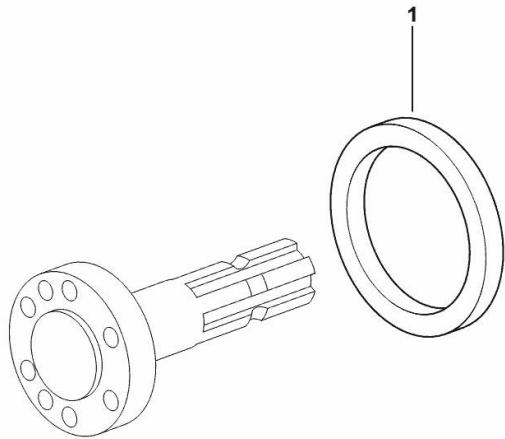
**PTO - SEAL RING FOR INSERTED END SHAFT - STANDARD VERSION**

<b>Fig.</b>	<b>P/n</b>	<b>QTY</b>	<b>Name</b>
-------------	------------	------------	-------------

**Notes:**

[XB 100 TB ->5001]

1	2.1520.043.0	1	oil seal 85 x 110 x 12
---	--------------	---	------------------------



9\_52636\_03\_0-A-001

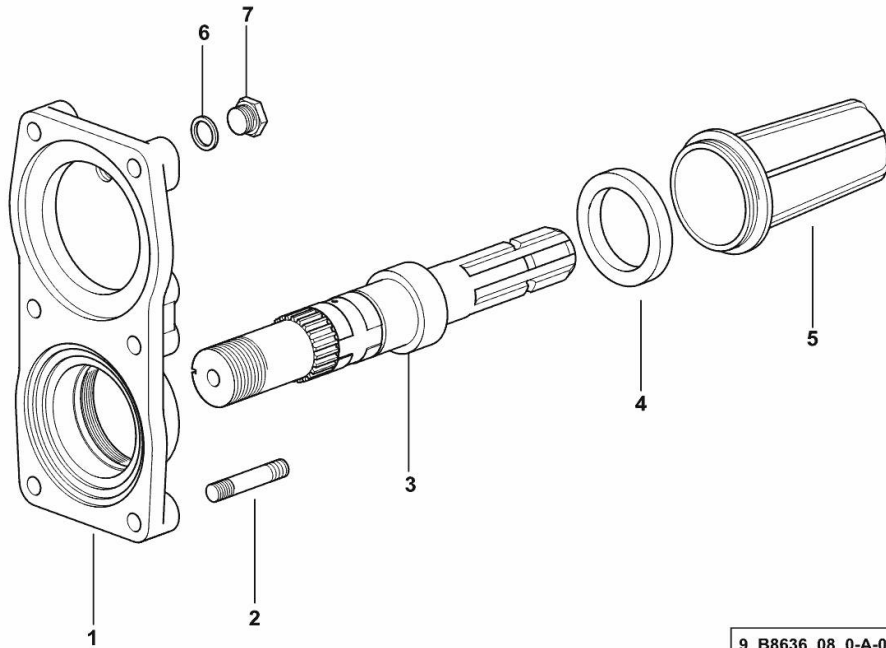
**P.T.O. - FIXED END SHAFT - FOR 2-SPEED STANDARD SEALS**

Fig.	P/n	QTY	Name
------	-----	-----	------

**Notes:**

[XB 100 TB ->5001]

1	0.010.7888.0/20	1	cover
2	2.0432.161.7	6	stud bolt m 10 p.1.5 / p.1.25 x 40
3	0.255.3652.0/30	1	power take-off shaft
4	2.1529.079.0	1	special oil seal 50 x 68 x 10
5	0.154.3655.0/10	1	guard
6	2.1560.010.0	1	gasket 14.2 x 20
7	2.3110.403.1	1	plug m 14 p.1.5x12



9\_B8636\_08\_0-A-001

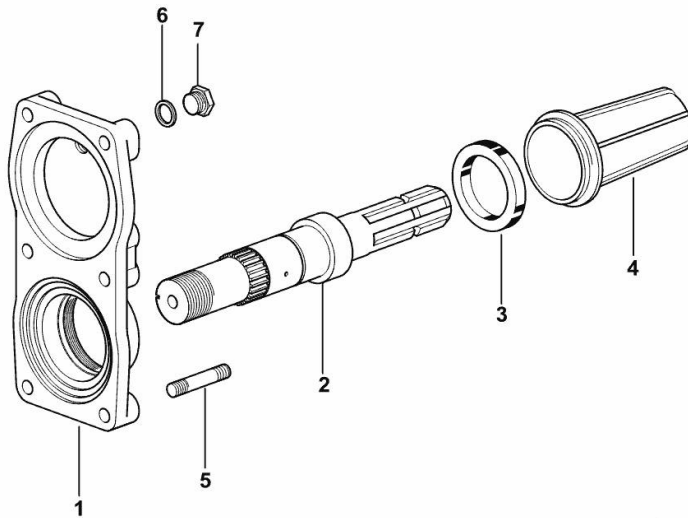
**P.T.O. - FIXED END SHAFT - FOR 4-SPEED STANDARD SEALS**

Fig.	P/n	QTY	Name
------	-----	-----	------

**Notes:**

[XB 100 TB ->5001]

1	0.010.7888.0/20	1	cover
2	0.007.3475.0/20	1	power take-off shaft
3	2.1529.079.0	1	special oil seal 50 x 68 x 10
4	0.154.3655.0/10	1	guard
5	2.0432.161.7	6	stud bolt m 10 p.1.5 / p.1.25 x 40
6	2.1560.010.0	1	gasket 14.2 x 20
7	2.3110.403.1	1	plug m 14 p.1.5x12



9\_B8636\_06\_0-A-001

Thank you so much for reading.  
Please click the “Buy Now!”  
button below to download the  
complete manual.



After you pay.

You can download the most  
perfect and complete manual in  
the world immediately.

Our support email:

[ebooklibonline@outlook.com](mailto:ebooklibonline@outlook.com)