

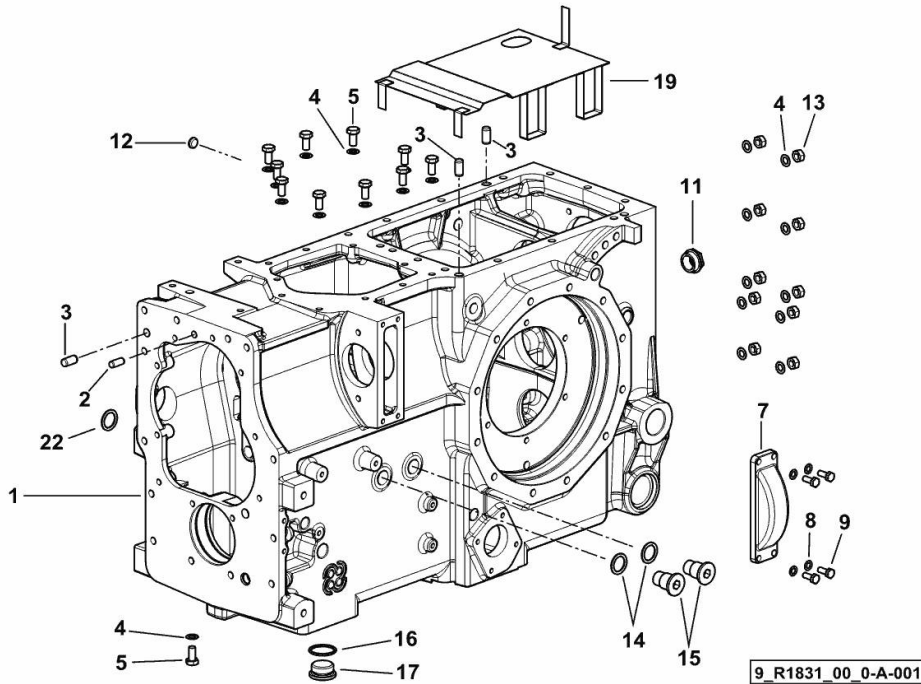
**GEARBOX - REAR**

Fig.	P/n	QTY	Name
------	-----	-----	------

**Notes:**

[XB 85 T ->5001]

1	0.014.9666.0/40	1	gear box
2	2.1651.811.0	1	cylindrical plug 10x24
3	2.1651.911.0	1	cylindrical plug
4	2.1470.006.2	28	lock washer 10
5	2.0112.307.2	18	screw m 10 p.1.5 x 20
7	0.255.3134.0/10	1	small cover
8	2.1481.007.1	4	washer 8
9	2.0112.207.2	4	screw m 8 p 1.25 x 20
11	2.3199.250.0	1	plug m 30 p.1
12	2.3171.006.4	1	plug Ø 16
13	2.1011.421.2	10	nut m 10 p.1.25
14	2.1560.020.0	2	copper gasket 24.3x32
15	2.3199.083.2	2	plug m 24 p.1.5
16	2.1560.026.0	1	gasket 35.3x41
17	2.3199.002.2	1	plug 1 gas
19	0.014.9265.2	1	division
22	2.1560.014.0	1	washer 18.2 x 24

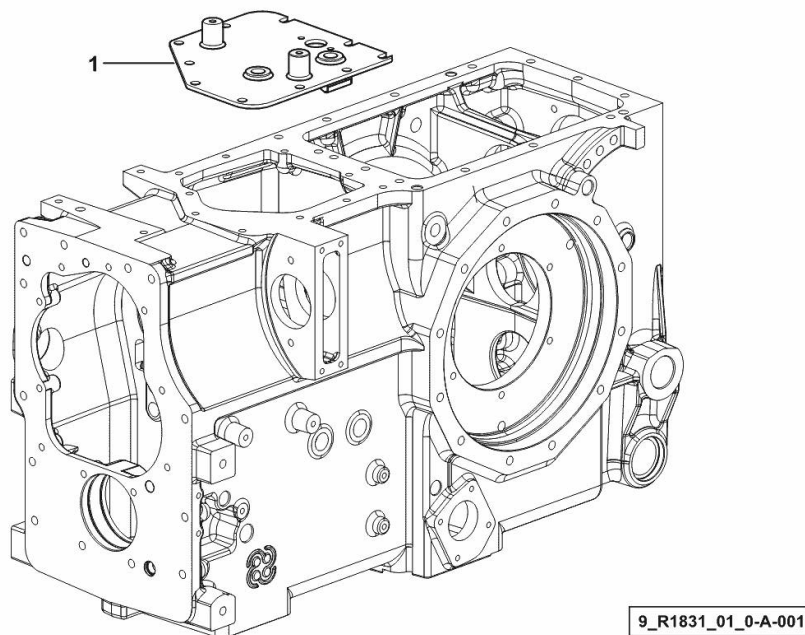


Section: D0 - TRANSMISSION  
**GEARBOX UPPER COVER**

Fig.	P/n	QTY	Name
------	-----	-----	------

Notes:  
 [XB 85 T ->5001]

1	0.016.0020.3/10	1	cover
---	-----------------	---	-------

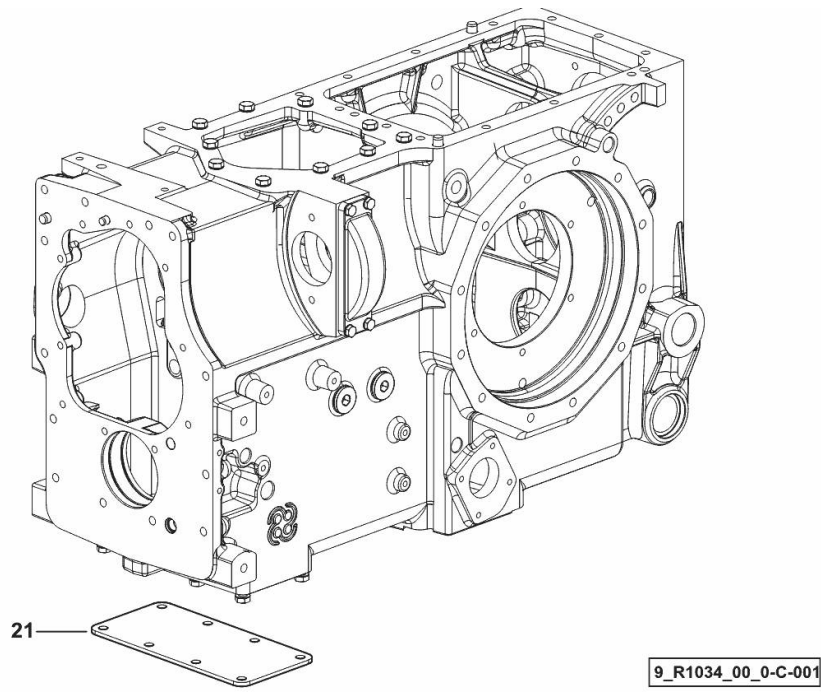


Section: D0 - TRANSMISSION  
**GEARBOX LOWER COVER**

<b>Fig.</b>	<b>P/n</b>	<b>QTY</b>	<b>Name</b>
-------------	------------	------------	-------------

**Notes:**  
 [XB 85 T ->5001]

21	0.255.3128.0/20	1	cover
----	-----------------	---	-------



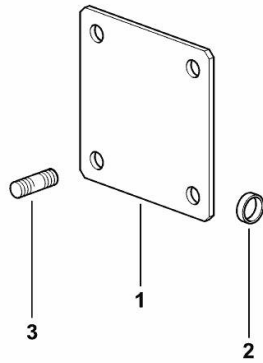
**COVER FOR TYPES WITHOUT SYNCHRO PTO**

<b>Fig.</b>	<b>P/n</b>	<b>QTY</b>	<b>Name</b>
-------------	------------	------------	-------------

**Notes:**

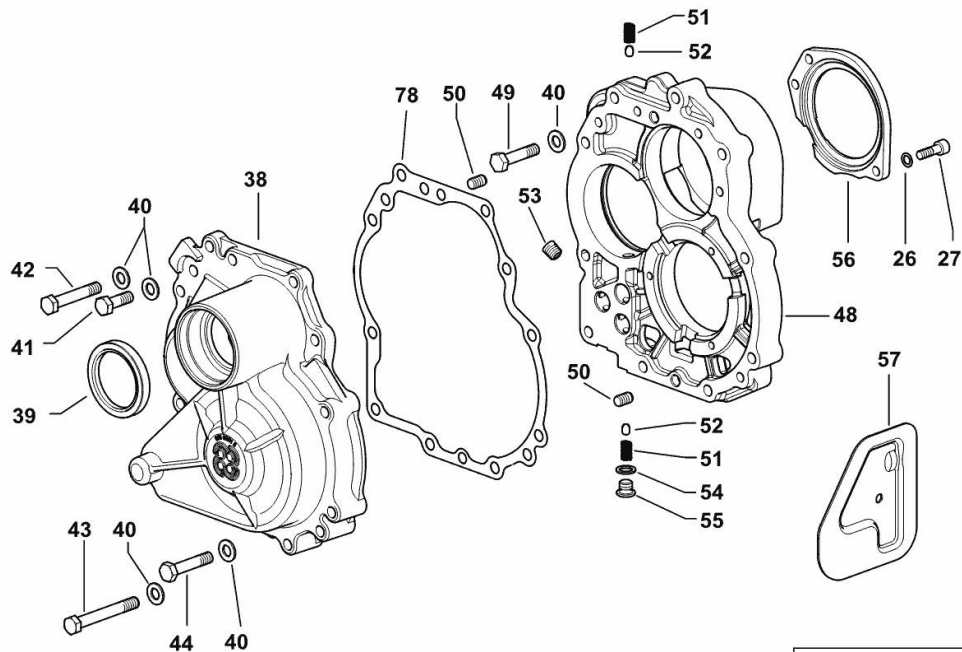
[XB 85 T ->5001]

1	0.255.3131.0/10	1	flange
2	2.3171.007.4	1	plug Ø 18
3	2.0432.155.7	4	stud bolt m 10 p.1.5 / p. 1.25 x 25



9\_40536\_01\_0-A-001

**5-SPEED GEARBOX INTERNAL FLANGES**



9\_H1433\_01\_0-A-001

Fig.	P/n	QTY	Name
------	-----	-----	------

**Notes:**

FOR TYPES WITHOUT HI-LO [XB 85 T ->5001]

26	2.1480.014.2	6	washer 8
27	2.0312.208.2	6	screw m 8 p.1.25 x 25
38	0.015.0581.0	1	cover
39	2.1520.329.0	1	oil seal 55x72x10
40	2.1475.003.2	15	washer 10
41	2.0112.311.2	4	screw m 10 p.1.5 x 30
42	2.0112.321.2	5	screw m 10 p.1.5 x 60
43	2.0112.325.2	3	screw m 10 p.1.5 x 80
44	2.0112.319.2	1	screw m 10 p.1.5 x 50
48	0.014.8438.0/30	1	flange
49	2.0112.317.2	2	screw m 10 p.1.5 x 45
50	2.1651.807.0	2	pin 10 x 16
51	2.4019.622.1	3	spring 6.3 x 9.5 x 1.6 x 22.4
52	2.2999.156.0	4	ball Ø 10
53	2.3131.001.4	1	plug m 12 p.1.5
54	2.1560.008.0	2	gasket 12.2 x 18
55	2.3199.164.2/20	2	plug m 12 p.1.5
56	0.014.8340.0/10	1	cover
57	0.007.3562.3/10	1	cover
78	0.015.6286.0	1	gasket



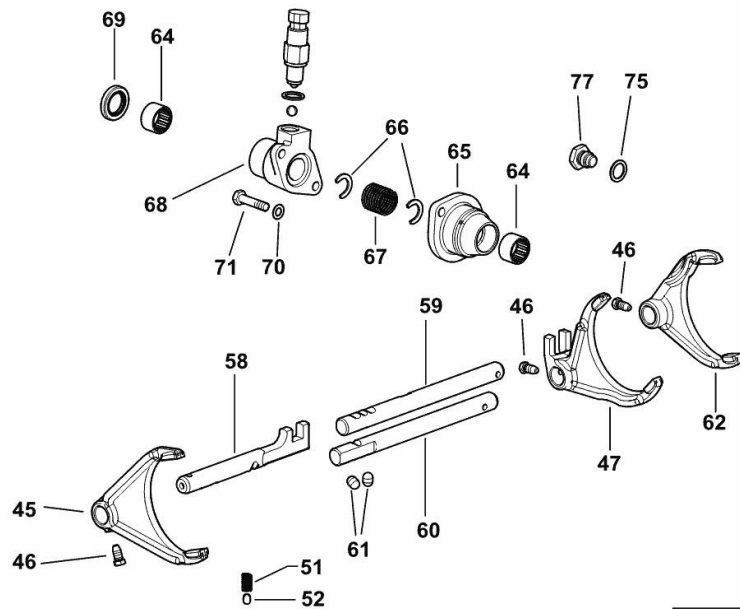
**5-SPEED GEARBOX INTERNAL CONTROLS**

Fig.	P/n	QTY	Name
------	-----	-----	------

**Notes:**

FOR TYPES WITHOUT HI-LO [XB 85 T ->5001]

45	0.013.0009.0/20	1	fork
46	2.0399.019.1	3	screw m 8 p.1 x 16
47	0.012.4169.0/30	1	fork
51	2.4019.622.1	3	spring 6.3 x 9.5 x 1.6 x 22.4
52	2.2999.156.0	4	ball Ø 10
58	0.255.6478.0/40	1	rod
59	0.255.6421.0/20	1	rod
60	0.255.6477.0/20	1	rod
61	2.1699.159.0	2	cap 10 x 14.1
62	0.013.0010.0/20	1	fork
64	2.2725.030.0	2	roller cage 22 x 28 x 16
65	0.011.7127.0/20	1	support
66	0.008.5405.0	2	ring
67	2.4019.698.1/10	1	spring 21 x 25 x 46
68	0.014.9383.0/20	1	support
69	2.1519.075.0	1	oil seal 22 x 35 x 6
70	2.1470.004.2	2	lock washer 8
71	2.0112.213.2	2	screw m 8 p.1.25 x 35
75	2.1560.012.0	2	gasket 16.2 x 22
77	2.3199.263.2	1	plug m 16 p.2x16x22



9\_H1433\_01\_0-E-003

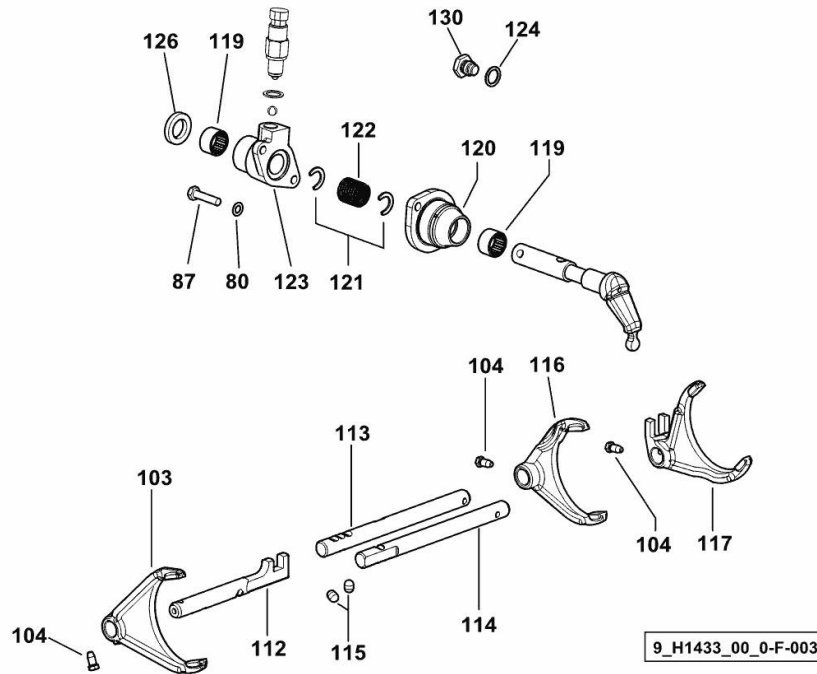
**5-SPEED GEARBOX INTERNAL CONTROLS**

Fig.	P/n	QTY	Name
------	-----	-----	------

**Notes:**

- FOR TYPES WITH HI - LO [XB 85 T ->5001]

80	2.1470.004.2	5	lock washer 8
87	2.0112.213.2	4	screw m 8 p.1.25 x 35
103	0.013.0009.0/20	1	fork
104	2.0399.019.1	3	screw m 8 p.1 x 16
112	0.255.6478.0/40	1	rod
113	0.255.6421.0/20	1	rod
114	0.255.6477.0/20	1	rod
115	2.1699.159.0	2	cap 10 x 14.1
116	0.013.0010.0/10	1	fork ( 5003 <- )
116	0.013.0010.0/20	1	fork ( -> 5004 )
117	0.012.4169.0/20	1	fork ( 5003 <- )
117	0.012.4169.0/30	1	fork ( -> 5004 )
119	2.2725.030.0	2	roller cage 22 x 28 x 16
120	0.011.7127.0/20	1	support
121	0.008.5405.0	2	ring
122	2.4019.698.1/10	1	spring 21 x 25 x 46
123	0.014.9383.0/20	1	support
124	2.1560.012.0	2	gasket 16.2 x 22
126	2.1519.075.0	1	oil seal 22 x 35 x 6
130	2.3199.263.2	1	plug m 16 p.2x16x22



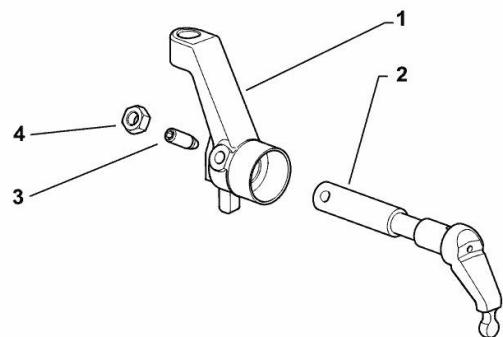


Section: D0 - TRANSMISSION  
**IN-CAB GEAR CONTROLS**

Fig.	P/n	QTY	Name
------	-----	-----	------

**Notes:**  
 [XB 85 T ->5001]

1	0.015.4595.2/10	1	lever
2	0.015.6226.0/10	1	lever
3	2.0399.050.2	1	screw m 10 p.1 x 30
4	2.1011.406.2	1	nut m 10 p.1



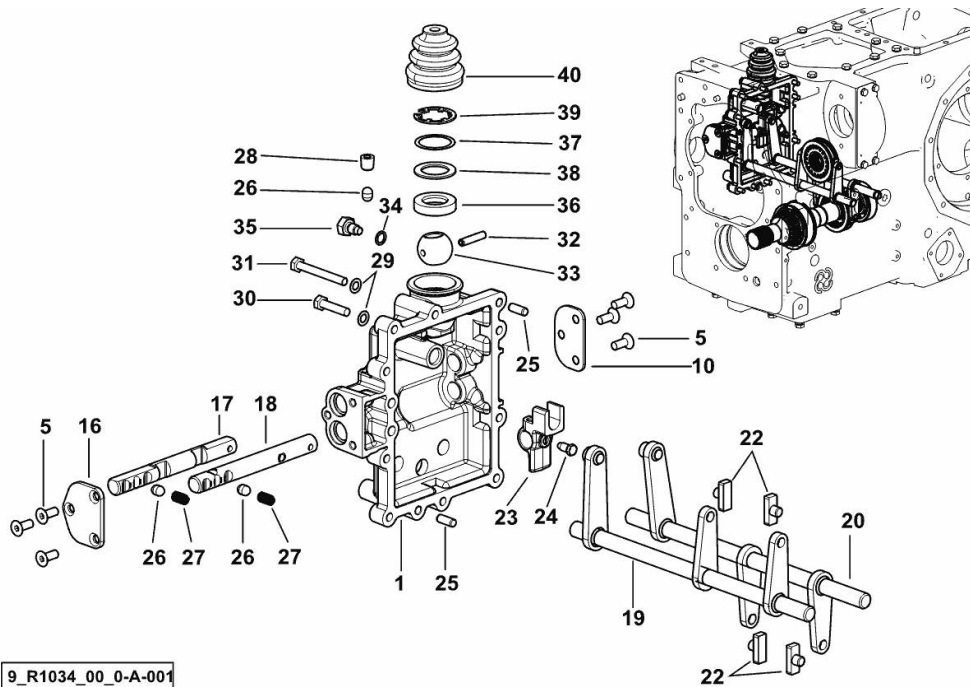
9\_R2233\_01\_0-A-002

**REDUCTION GEAR CONTROL**

Fig.	P/n	QTY	Name
------	-----	-----	------

**Notes:**

[XB 85 T ->5001]



9\_R1034\_00\_0-A-001

1	0.013.5466.0	1	cover
5	2.0342.305.3	6	screw m 8 x 20
10	0.013.5465.0/10	1	plate
16	0.013.5464.0/10	1	plate
17	0.013.5459.0	1	rod
18	0.013.5460.0	1	rod
19	0.255.6438.2/10	1	fork
20	0.013.5359.2/10	1	fork
22	0.255.6463.0	4	shoe
23	0.013.5458.0	1	small lever
24	2.0399.019.1	1	screw m 8 p.1 x 16
25	2.1651.709.0	2	pin 8x20
26	2.1699.159.0	3	cap 10 x 14.1
27	2.4019.622.1	2	spring 6.3 x 9.5 x 1.6 x 22.4
28	2.3131.001.4	1	plug m 12 p.1.5
29	2.1481.007.2	9	washer 8
30	2.0112.213.2	8	screw m 8 p.1.25 x 35
31	2.0112.222.2	1	screw m 8 p.1.25x65
32	2.1631.515.9	1	roll pin 6 x 32
33	0.255.6461.0	1	ball
34	2.1560.005.0	1	copper gasket 10.2 x 14
35	2.0119.124.2	1	screw m 10 x 16
36	0.255.6462.0/10	1	spacer
37	2.1580.115.0	1	shim 32.5x40x0.5
38	2.1599.429.0	1	shoulder ring 28x41.5
39	2.1499.054.1	1	circlip 42
40	0.159.6415.0/10	1	guard

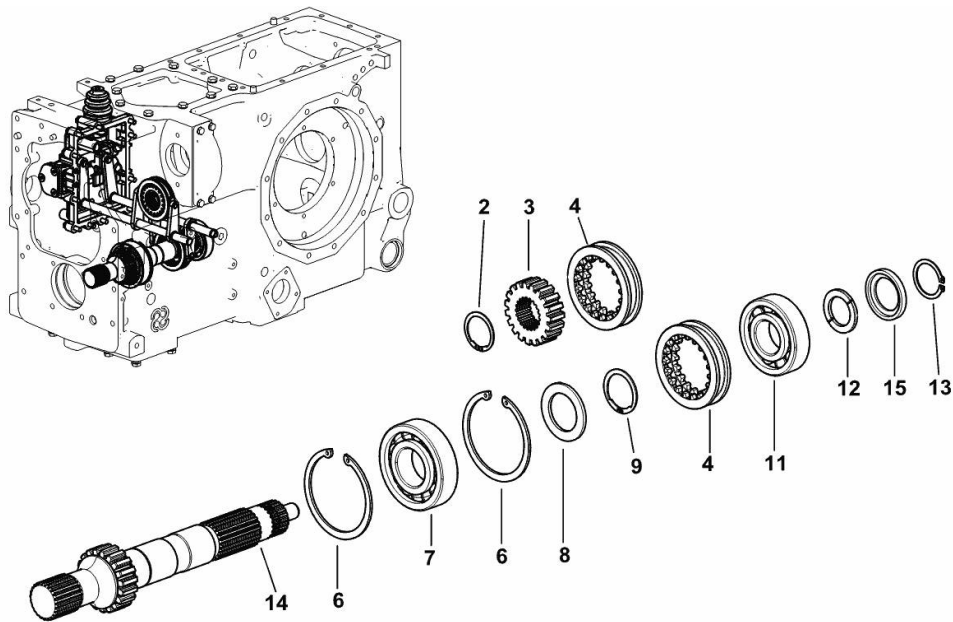
**SPEED RANGE REDUCTION GEAR UNIT**

Fig.	P/n	QTY	Name
------	-----	-----	------

**Notes:**

[XB 85 T ->5001]

2	2.1419.067.0	1	circlip 35 x 1.5
3	0.255.3439.0	1	hub Z = 19 / Z = 21
4	0.255.3438.0/20	2	sleeve Z = 19
6	2.1411.036.1	2	circlip 90
7	2.2060.012.0	1	ball bearing 40 x 90 x 23
8	0.255.3450.0	1	shoulder ring 40 x 60 x 3.5
9	2.1499.034.1	1	circlip 40 x 1.75
11	2.2060.011.0	1	ball bearing 35 x 80 x 21
12	0.008.4480.0/20	1	shoulder
13	2.1410.014.1	1	circlip 35
14	0.255.3410.0/40	1	reduction unit shaft
15	0.008.4481.0	1	ring



9\_R1034\_00\_0-B-001

Thank you so much for reading.  
Please click the “Buy Now!”  
button below to download the  
complete manual.



After you pay.

You can download the most  
perfect and complete manual in  
the world immediately.

Our support email:

[ebooklibonline@outlook.com](mailto:ebooklibonline@outlook.com)