

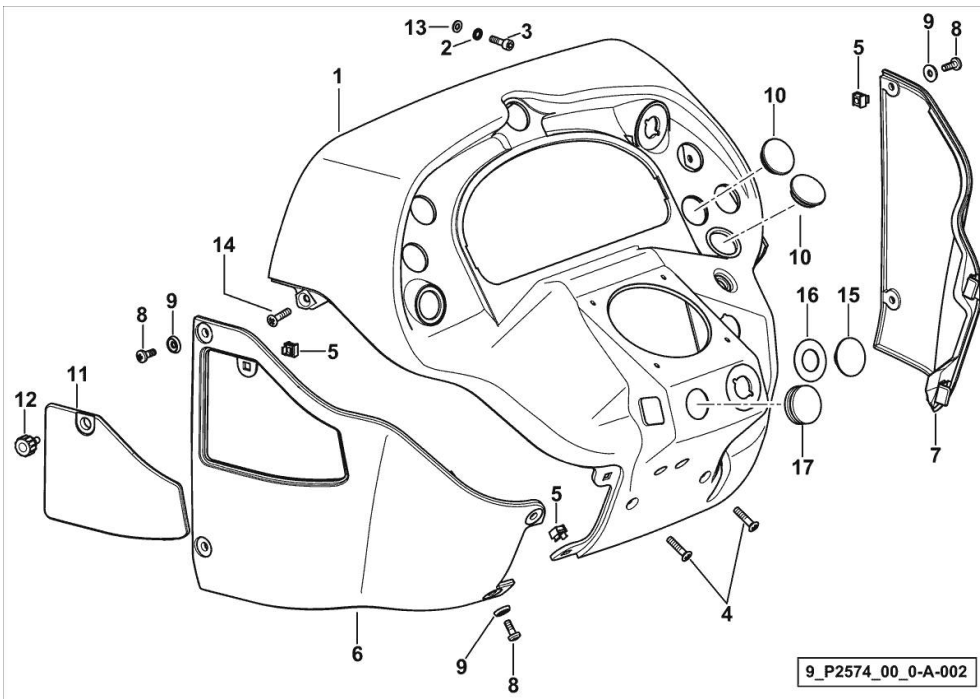
DASHBOARD

Fig.	P/n	QTY	Name
------	-----	-----	------

Notes:

[XB 85 TB ->1001] 1001 <-

1	0.016.3901.0/10	1	dashboard
2	2.1472.003.2	2	spring washer 6, d128
3	2.0312.106.2	2	screw m 6 p.1 x 20
4	2.0322.408.6	2	screw m 6 x 25
5	2.6999.024.2	7	special nut m 6
6	0.016.1485.0	1	shield sx/lb/li
7	0.016.3900.0	1	shield dx/rh/re
8	2.0332.406.3	4	screw m 6 p.1.0 x 16
9	0.9125.662.0	4	washer 6.4 x 12.5
10	0.015.0457.0/10	4	plug
11	0.016.3899.0	1	shield
12	0.014.8187.0	1	knob
13	2.1310.002.2	2	flat washer 6.4x12.5
14	2.0322.407.6	2	screw m 6 x 20
15	2.3199.371.0	1	plug
16	2.1589.552.0	1	shoulder 22x42x1
17	2.3199.115.0	1	plug 30x38x12



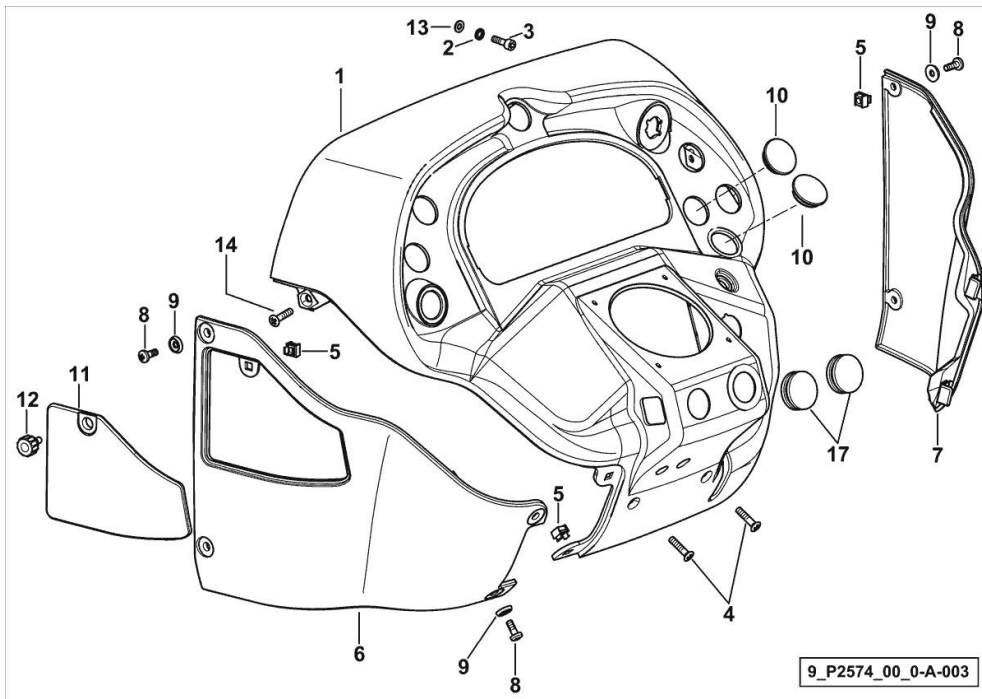
DASHBOARD

Fig.	P/n	QTY	Name
------	-----	-----	------

Notes:

[XB 85 TB ->1001]

1	0.016.3901.0/20	1	dashboard
2	2.1472.003.2	2	spring washer 6, d128
3	2.0312.106.2	2	screw m 6 p.1 x 20
4	2.0322.408.6	2	screw m 6 x 25
5	2.6999.024.2	7	special nut m 6
6	0.016.1485.0	1	shield sx/lb/li
7	0.016.3900.0	1	shield dx/rh/re
8	2.0332.406.3	6	screw m 6 p.1.0 x 16
9	0.9125.662.0	6	washer 6.4 x 12.5
10	0.015.0457.0/10	4	plug
11	0.016.3899.0	1	shield
12	0.014.8187.0	1	knob
13	2.1310.002.2	2	flat washer 6.4x12.5
14	2.0322.407.6	2	screw m 6 x 20
17	2.3199.115.0	2	plug 30x38x12



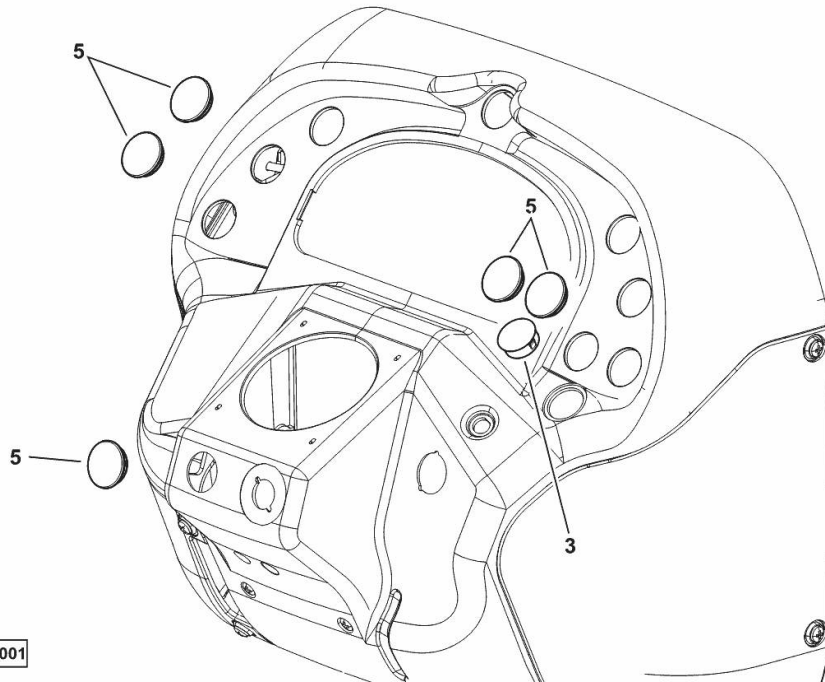
PLUGS

Fig.	P/n	QTY	Name
------	-----	-----	------

Notes:

[XB 85 TB ->1001]

3	0.011.6915.0	1	plug 27.8-28.6/30.9
5	0.015.0457.0/10	5	plug



9_R1584_00_0-H-001

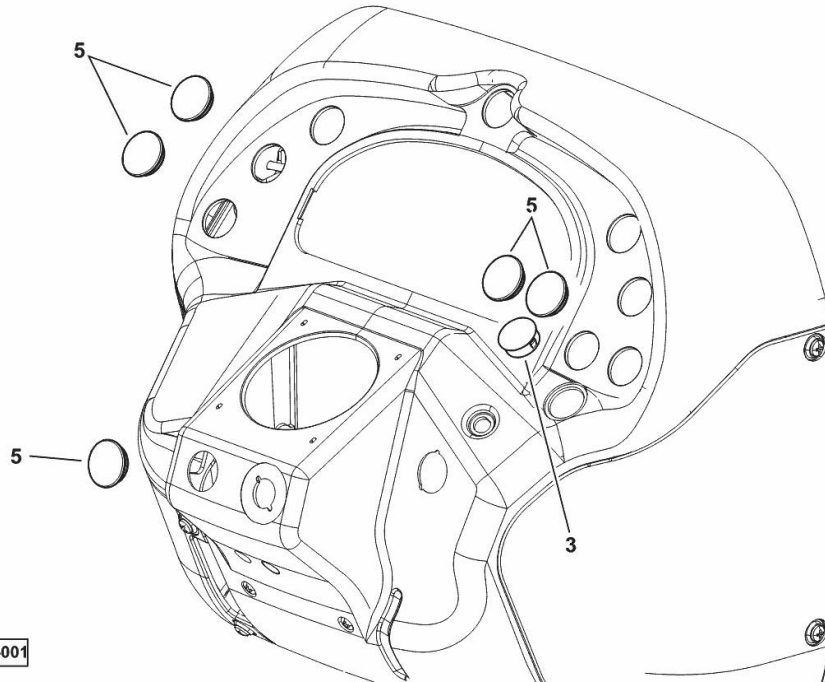
PLUGS

Fig.	P/n	QTY	Name
------	-----	-----	------

Notes:

- EXPORT U.S.A. [XB 85 TB ->1001]

3	0.011.6915.0	1	plug 27.8-28.6/30.9
5	0.015.0457.0/10	5	plug



9_R1584_01_0-H-001

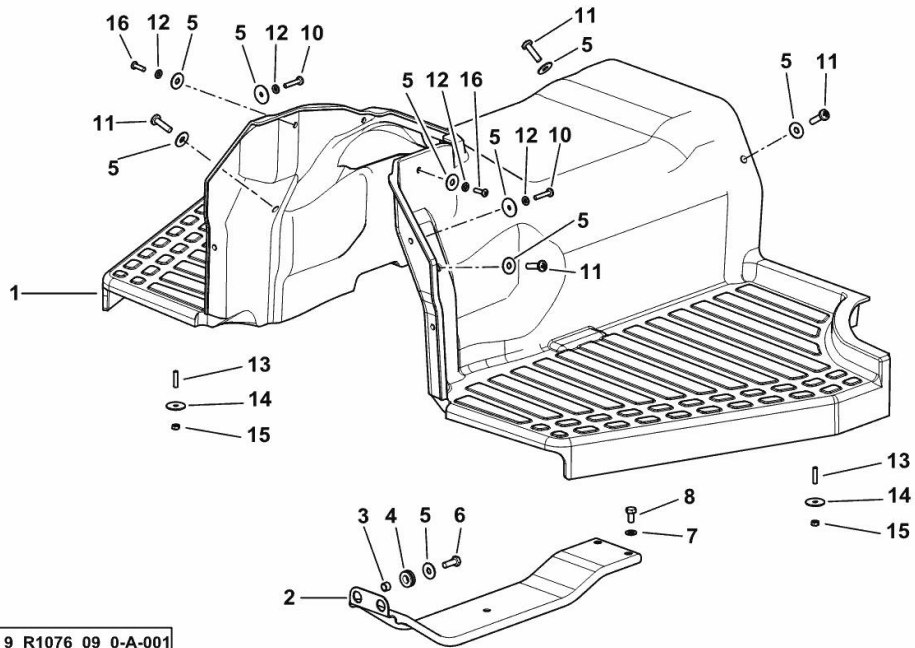
TUNNEL CLADDING

Fig.	P/n	QTY	Name
------	-----	-----	------

Notes:

[XB 85 TB ->1001]

1	0.016.8044.2/10	1	mat
2	0.016.8043.3	1	brace
3	2.1579.772.2	2	spacer 9x12x7.5
4	2.6560.006.0	2	wire guide 12x1.5
5	2.1312.004.2	14	washer 8x24x2
6	2.0112.208.2	2	screw m 8 p.1.25 x 22
7	2.1310.004.2	2	flat washer 8.4x17
8	2.0112.205.2	2	screw m 8 p.1.25 x 16
10	2.0332.409.6	4	screw m 6 p.1x30
11	2.0332.509.6	4	screw
12	2.1310.002.3	8	flat washer 6.4 x 12 x 1.6
13	2.0422.001.2	10	stud bolt m 6 p.1.0 x 16
14	2.1599.545.2	10	washer 6.5x28x2
15	2.1011.103.2	10	nut m 6 p.1
16	2.0332.407.3	4	screw m 6 x 20



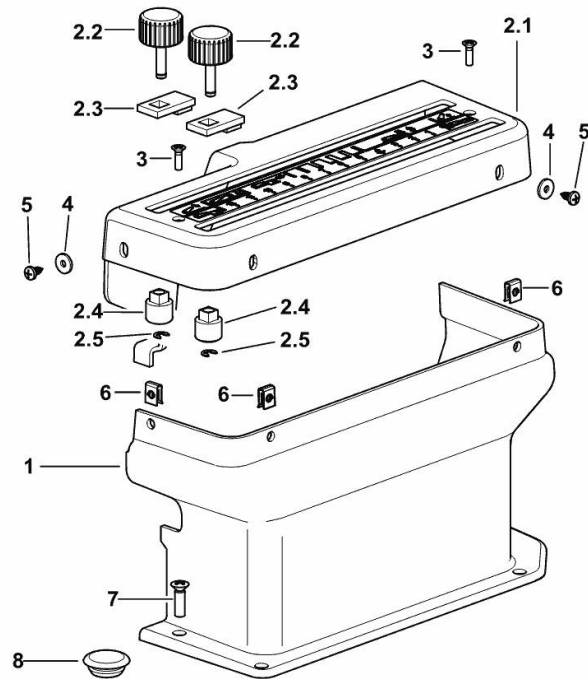
CONTROL CONSOLE FOR POWER-LIFT

Fig.	P/n	QTY	Name
------	-----	-----	------

Notes:

[XB 85 TB ->1001]

1	0.016.9026.0	1	console
2.1	0.016.9027.0	1	cover
2.2	0.007.6770.3/10	2	knob
2.3	0.9107.668.0	2	stop
2.4	0.016.9029.0	2	small block
2.5	2.1430.005.7	2	circlip 4
3	2.0322.205.3	2	screw
4	2.1312.001.3	3	washer 4
5	2.0350.405.3	3	screw m 4.2 x 16
6	2.6999.022.0	3	clip
7	2.0322.407.3	4	screw m 6 p.1 x 20
8	2.6070.050.0	1	plug Ø 20



9_P9759_52_0-A-001

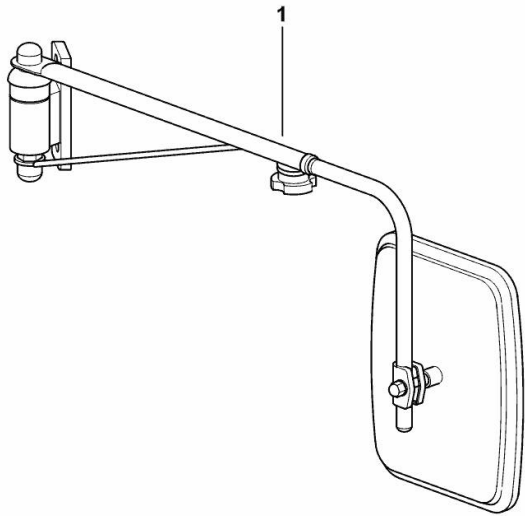
REARVIEW MIRROR - SX/LH/LI

Fig.	P/n	QTY	Name
------	-----	-----	------

Notes:

[XB 85 TB ->1001]

1	0.010.1604.4/40	1	rear view mirror sx/lh/li ☞ 0.010.1604.4/40
---	-----------------	---	--



9_20176_65_0-A-001

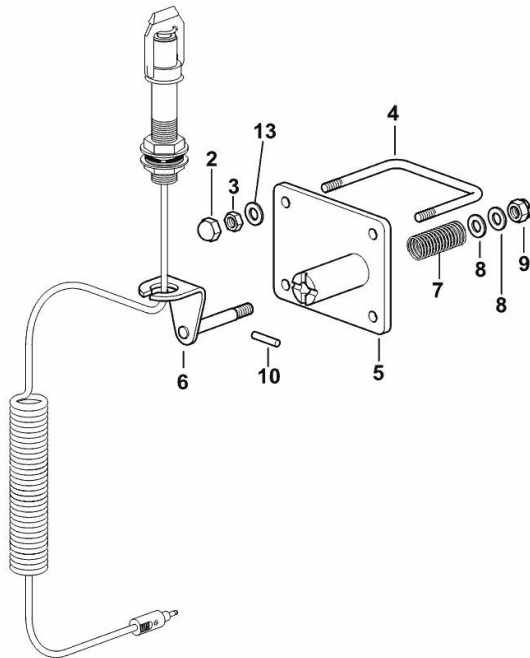
PREARRANGEMENT FOR WARNING BEACON

Fig.	P/n	QTY	Name
------	-----	-----	------

Notes:

[XB 85 TB ->1001]

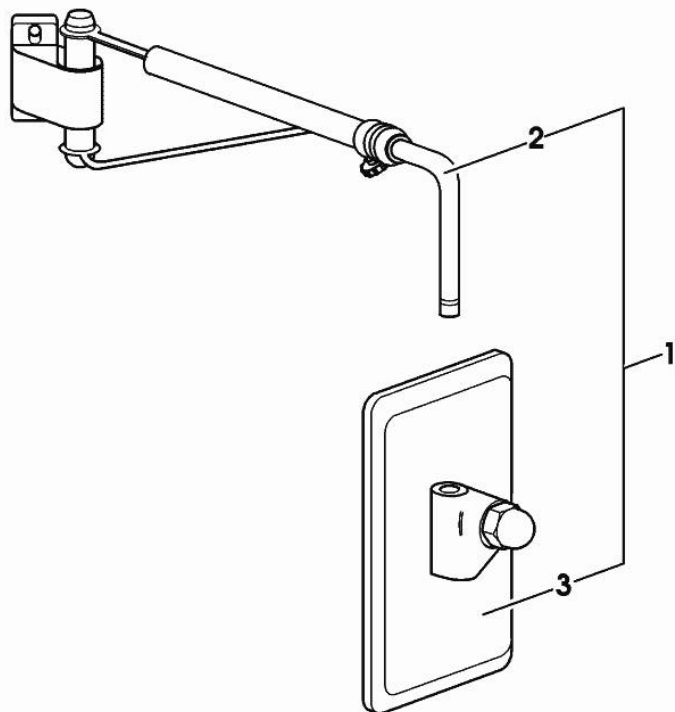
2	0.163.7856.0	4	cap
3	2.1011.105.2	4	nut m 8 p.1.25
4	0.014.0116.0	2	u bolt
5	0.014.0487.2/10	1	support
6	0.014.0492.2/10	1	support
7	2.4019.611.2	1	spring
8	2.1310.006.2	2	flat washer 10.5x21
9	2.1120.006.2	1	nut m 10 p.1.5
10	2.1651.312.2	1	pin 4x28
13	2.1310.004.2	4	flat washer 8.4x17



9_20176_65_0-B-001

REARVIEW MIRROR

Fig.	P/n	QTY	Name
1	0.010.1604.4/40	1	rear view mirror sx/lh/li
2	0.010.3096.2	1	rod
3	0.9233.183.3	1	rear view mirror



0_010_1604_4_40

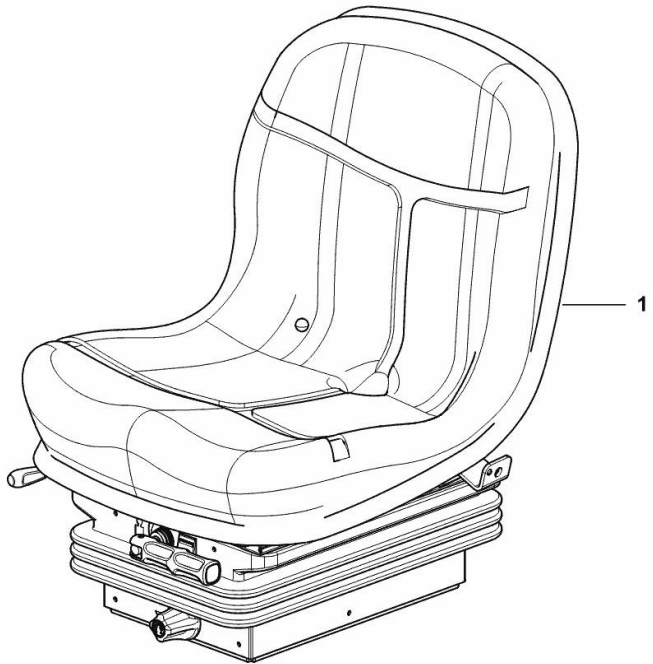
DRIVER'S SEAT COBO

Fig.	P/n	QTY	Name
------	-----	-----	------

Notes:

[XB 85 TB ->1001]

1	0.017.1381.4/20	1	driver's seat COBO ☞ 0.017.1381.4/20 ☞ 0.017.1381.4/20
---	-----------------	---	--



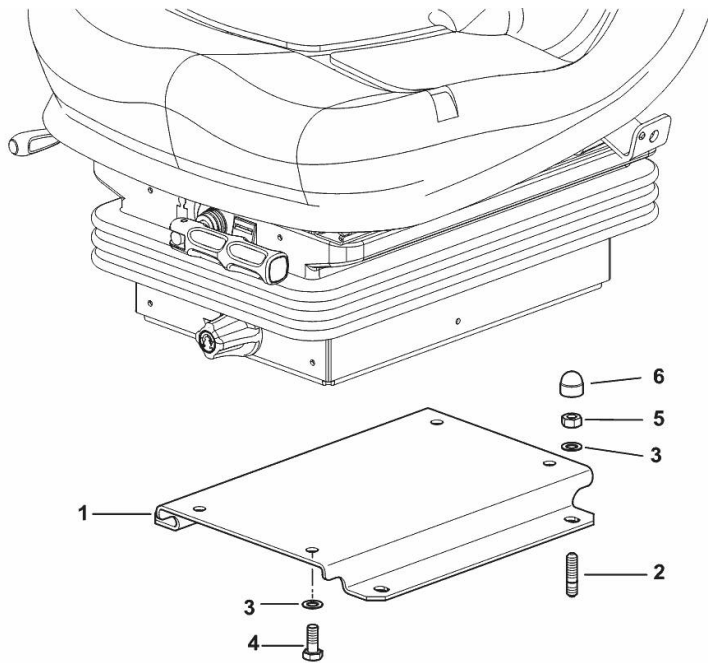
9_R0675_01_0-A-001

Section: G0 - BODYWORK - CAB
SEAT SUPPORT BRACKET

Fig.	P/n	QTY	Name
------	-----	-----	------

Notes:
 [XB 85 TB ->1001]

1	0.017.0837.0	1	bracket
2	2.0439.060.2	4	stud bolt m 8 p.1.25-1x22
3	2.1310.004.2	8	flat washer 8.4x17
4	2.0112.209.2	4	screw m 8 p 1.25 x 25
5	2.1011.405.2	4	nut m 8 p.1
6	0.163.7856.0	4	cap



9_R0675_00_0-A-001

Thank you so much for reading.
Please click the “Buy Now!”
button below to download the
complete manual.



After you pay.

You can download the most
perfect and complete manual in
the world immediately.

Our support email:

ebooklibonline@outlook.com