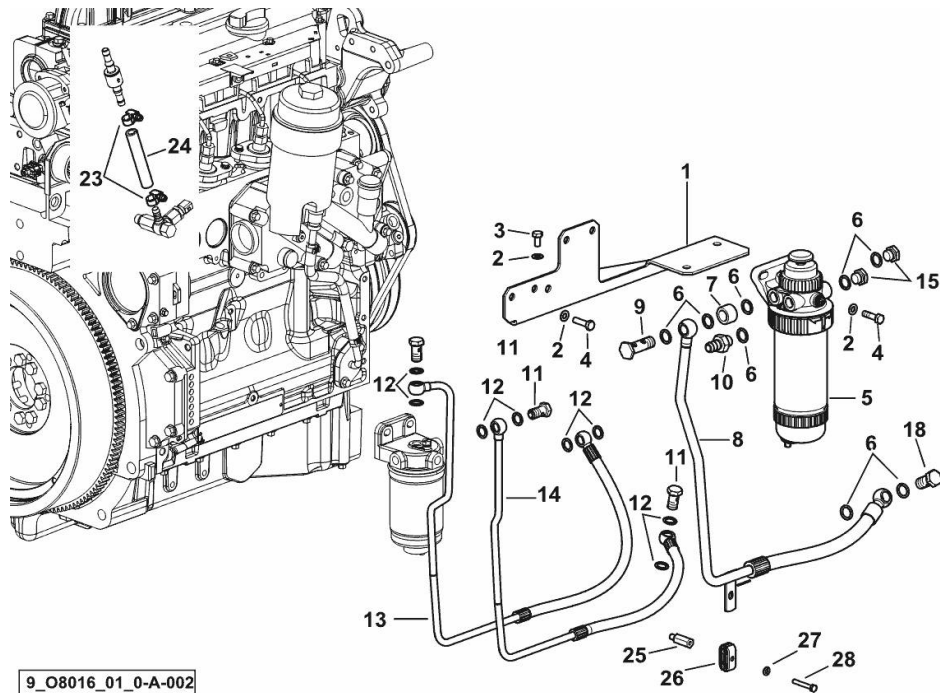


FUEL FILTER SUPPLY

Fig.	P/n	QTY	Name
------	-----	-----	------

Notes:

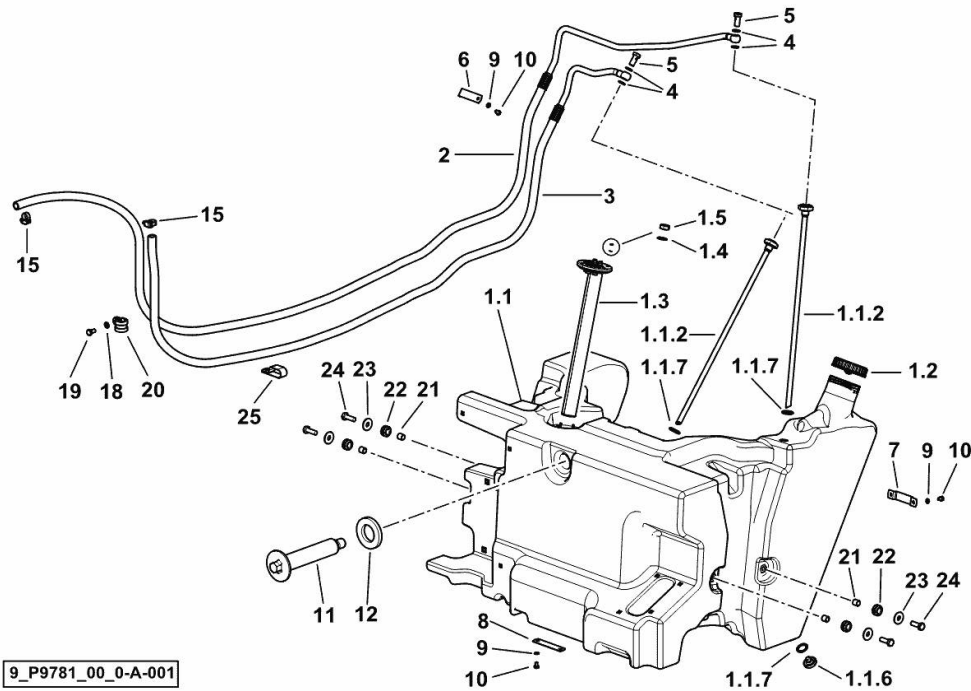
[XB 85 TB ->5001]



9_O8016_01_0-A-002

1	0.014.8692.3/20	1	bracket
2	2.1310.004.2	6	flat washer 8.4x17
3	2.0112.205.2	2	screw m 8 p.1.25 x 16
4	2.0112.211.2	4	screw m 8 p.1.25 x 30
5	2.4319.290.0/10	1	precleaner ☞ 2.4319.290.0/10
6	2.1560.012.0	8	gasket 16.2 x 22
7	2.1549.335.2	1	spacer 26.9x5x18
8	0.017.7968.3	1	tube
9	2.3339.597.2/10	1	pipe union m 16 p.1.5x50
10	2.3339.322.2	1	pipe union
11	2.3332.004.2	3	pipe union m 14 p.1.5 x 27
12	2.1560.010.0	9	gasket 14.2 x 20
13	0.017.7970.3	1	tube
14	0.017.7969.3	1	tube
15	2.3110.404.2	2	plug m 16 p.1.5
18	2.3332.005.2	1	pipe fitting m 16 p.1.5
23	2.6851.019.0	2	clamp Ø 13/20
24	0.012.6449.0	0.1	tube
25	0.017.8246.0	1	small column
26	2.3321.007.0	1	collar Ø10/10
27	2.1310.002.2	1	flat washer 6.4x12.5
28	2.0114.015.2	1	screw m 6 p.1 x 40

FUEL SYSTEM - TANK



9_P9781_00_0-A-001

Fig.	P/n	QTY	Name
------	-----	-----	------

Notes:

[XB 85 TB ->5001]

1.1	0.016.0158.3/20	1	fuel tank (-> 5001)
1.1.2	0.016.1346.3	2	tube
1.1.6	0.011.5133.0	1	plug m 12
1.1.7	2.1530.056.0	3	oil seal 21.82 x 3.53
1.2	0.008.9280.4	1	plug
1.3	2.7059.002.0	1	float ☞ 2.7059.002.0
1.4	2.1311.002.2	6	flat washer 4
1.5	2.1011.101.2	6	nut
2	0.016.4716.3/10	1	tube (-> 5001)
3	0.016.4717.3/10	1	tube (-> 5001)
4	2.1560.008.0	4	gasket 12.2 x 18
5	2.3339.472.2/10	2	pipe union m 12 p.1.25x26
6	0.016.4696.0	1	bracket
7	0.016.4693.0	1	bracket
8	0.016.4691.0	1	bracket
9	2.1470.002.2	5	lock washer 6
10	2.0112.002.2	5	screw m 6 p.1 x 10
11	0.016.1825.2	1	pin
12	0.016.1826.0	1	shim
15	2.6851.019.0	2	clamp Ø 13/20
18	2.1470.004.2	1	lock washer 8
19	2.0112.205.2	1	screw m 8 p.1.25 x 16
20	2.6839.051.0	1	clamp 20/20
21	2.1549.062.2	4	spacer 11x14x13
22	2.6569.011.0	4	rubber plug
23	2.1312.005.2	4	washer 10.2
24	2.0112.311.2	4	screw m 10 p.1.5 x 30
25	0.016.4667.0	1	bracket

PRE-FILTER - COMPONENTS

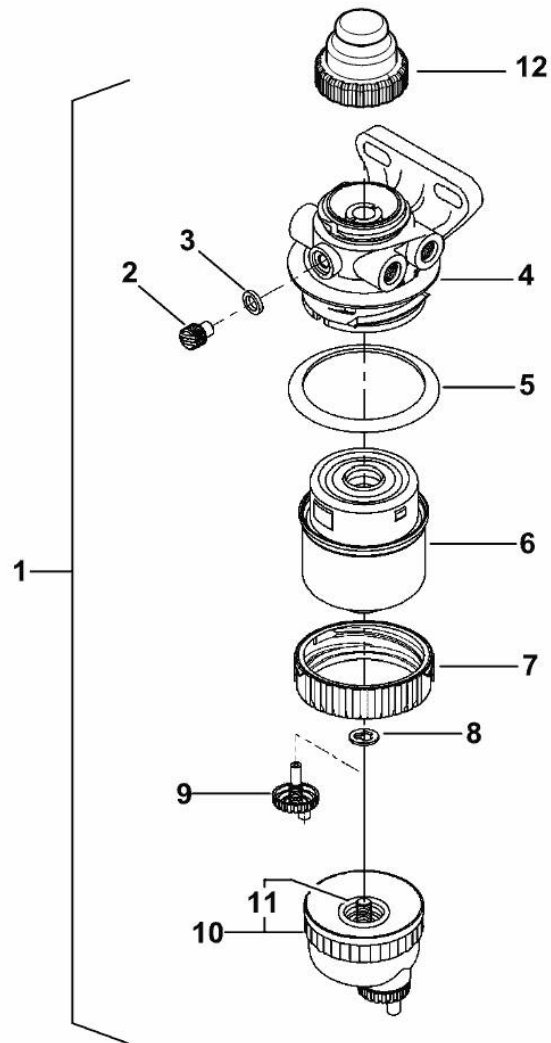


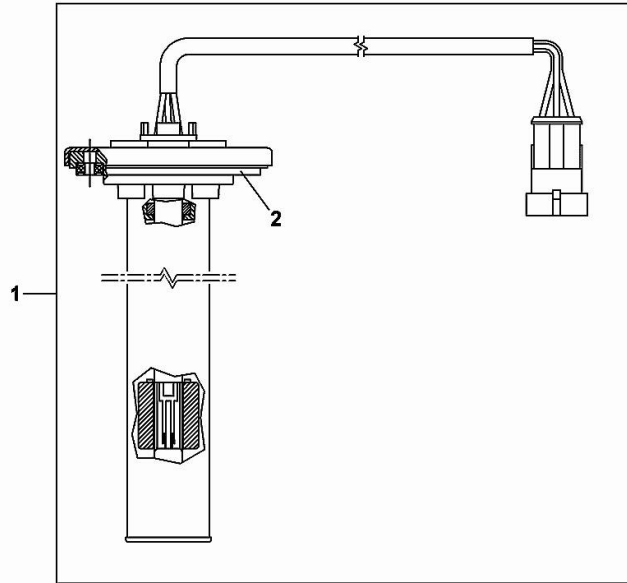
Fig.	P/n	QTY	Name
1	2.4319.290.0/10	1	precleaner
2	0.900.0789.7	1	valve
3	0.900.0789.8	1	ring
4	0.000.0000.1	1	cannot be supplied
5	0.900.0789.9	1	oil seal
6	0.900.0456.2	1	fuel filter element
7	0.900.0790.0	1	ring
8	0.900.0790.1	1	gasket
9	0.900.0790.2	1	valve
10	0.900.0790.4	1	small tank
11	0.900.0790.3	1	gasket
12	0.900.1450.6	1	small pump

2_4319_290_0_10

FUEL LEVEL SENSOR

Fig.	P/n	QTY	Name
1	2.7059.002.0	1	float
2	0.900.1581.8	1	gasket

2.7059.002.0



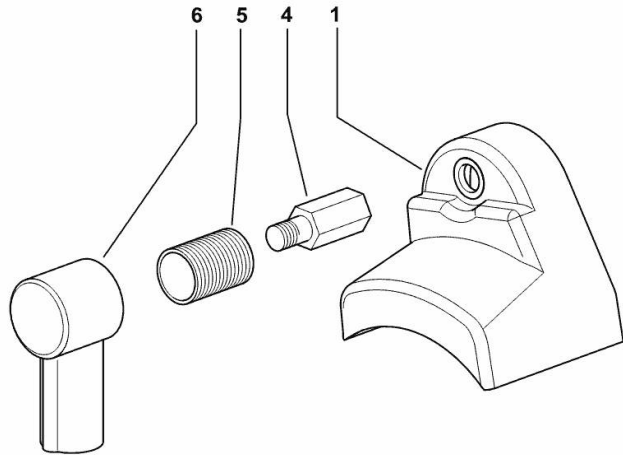
STARTER MOTOR COVER

Fig.	P/n	QTY	Name
------	-----	-----	------

Notes:

[XB 85 TB ->5001]

1	0.008.0391.0	1	cover
4	0.008.0616.0	1	pipe fitting m 10
5	0.008.0378.0	1	cover
6	2.6519.033.0	1	cap



9 R1484_02_0-B-001

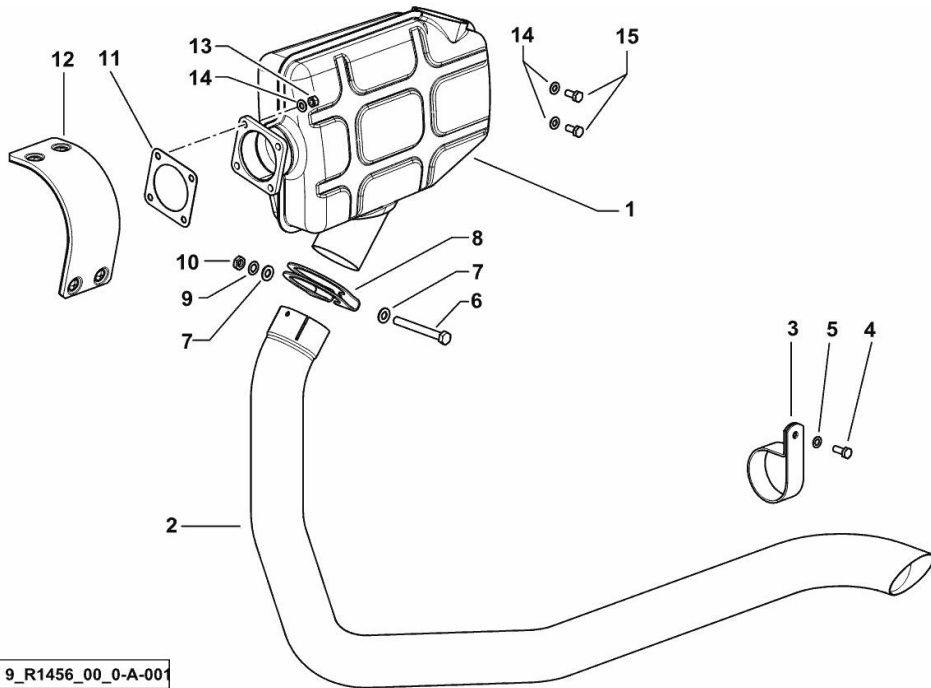
EXHAUST SILENCER

Fig.	P/n	QTY	Name
------	-----	-----	------

Notes:

[XB 85 TB ->5001]

1	0.015.7915.3	1	exhaust silencer
2	0.016.6326.0/10	1	exhaust pipe
3	0.016.8389.0	1	bracket
4	2.0112.207.2	1	screw m 8 p 1.25 x 20
5	2.1470.004.2	1	lock washer 8
6	2.0112.327.2	1	screw m 10 p.1.5 x 90
7	2.1310.006.2	2	flat washer 10.5x21
8	0.010.5018.0	1	clamp
9	2.1470.006.2	1	lock washer 10
10	2.1011.206.2	1	nut
11	0.010.9862.0	1	gasket
12	0.014.7978.3/10	1	guard
13	2.1011.105.2	2	nut m 8 p.1.25
14	2.1310.004.2	4	flat washer 8.4x17
15	2.0112.206.2	2	screw m 8 p.1.25 x 18



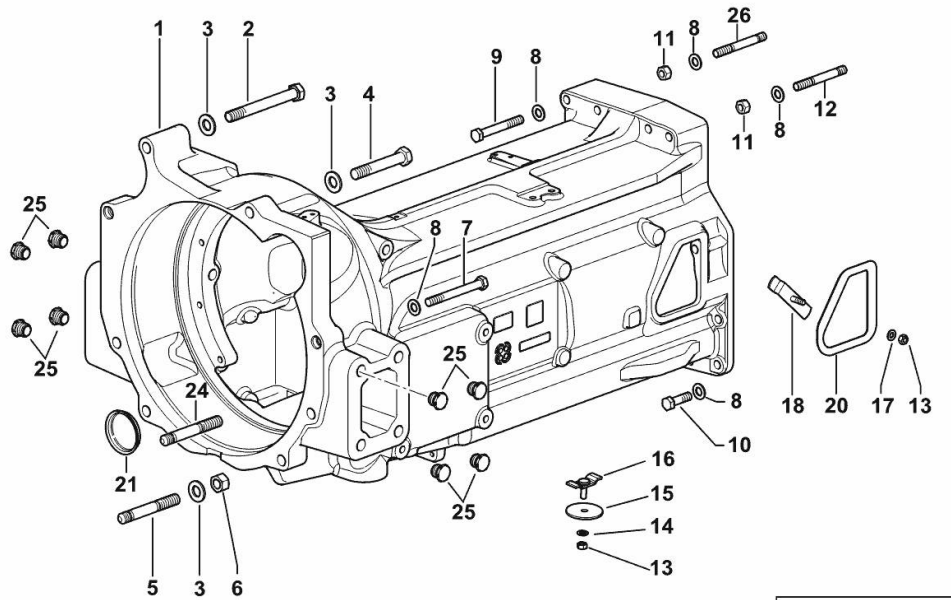
9_R1456_00_0-A-001

JUNCTION CASE

Fig.	P/n	QTY	Name
------	-----	-----	------

Notes:

[XB 85 TB ->5001]



9_H1452_00_0-A-002

1	0.014.9772.0/60	1	clutch housing
2	2.0113.637.2	1	screw m 16 p.2x140
3	2.1475.006.2	6	spring washer 16
4	2.0113.629.2	1	screw m 16 p.2x100
5	2.0433.425.7	2	stud bolt m 16 p.1.5 x 100
6	2.1012.409.7	5	nut m 16
7	2.0113.431.2	2	screw m 12 p.1.75 x 110
8	2.1475.004.2	15	spring washer 12
9	2.0112.427.2	5	screw m 12 p.1.75 x 90
10	2.0112.415.2	5	screw m 12 p.1.75 x 40
11	2.1011.107.2	3	nut m 12 p.1.75
12	2.0422.422.7	2	stud bolt m 12 p.1.75x85
13	2.1011.105.2	2	nut m 8 p.1.25
14	2.1475.002.2	1	conical washer 8
15	0.007.3546.0	1	plug
16	0.007.3545.2	1	bracket
17	2.1310.004.2	1	flat washer 8.4x17
18	0.007.3565.2	1	bracket
20	0.007.3564.0	1	gasket
21	0.015.0442.0	1	ring Ø 62
24	2.0443.423.7	2	stud bolt m 16 p.1.5x90
25	2.3199.363.0	8	plug m 20 p.2.5
26	2.0422.425.7	1	stud bolt m 12 p.1.75x100

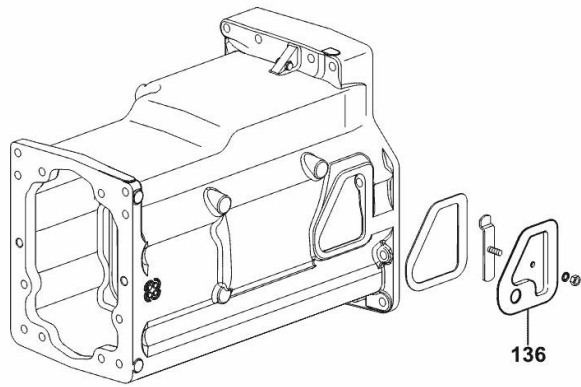
CLOSING COVER WITH 5-SPEED GEARBOX

Fig.	P/n	QTY	Name
------	-----	-----	------

Notes:

- FOR TYPES WITH HI - LO [XB 85 TB ->5001]

136	0.007.3563.3/10	1	cover
-----	-----------------	---	-------



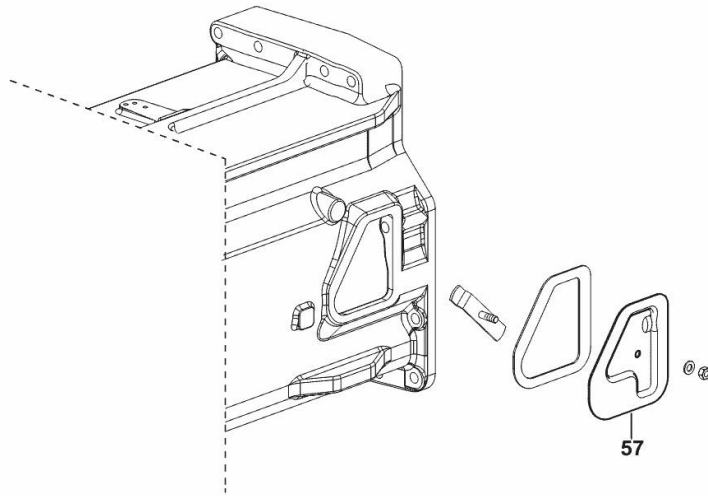
9_H1433_00_0-H-001

CLOSING COVER WITH 5-SPEED GEARBOX

Fig.	P/n	QTY	Name
------	-----	-----	------

Notes:
[XB 85 TB ->5001]

57	0.007.3562.3/10	1	cover
----	-----------------	---	-------



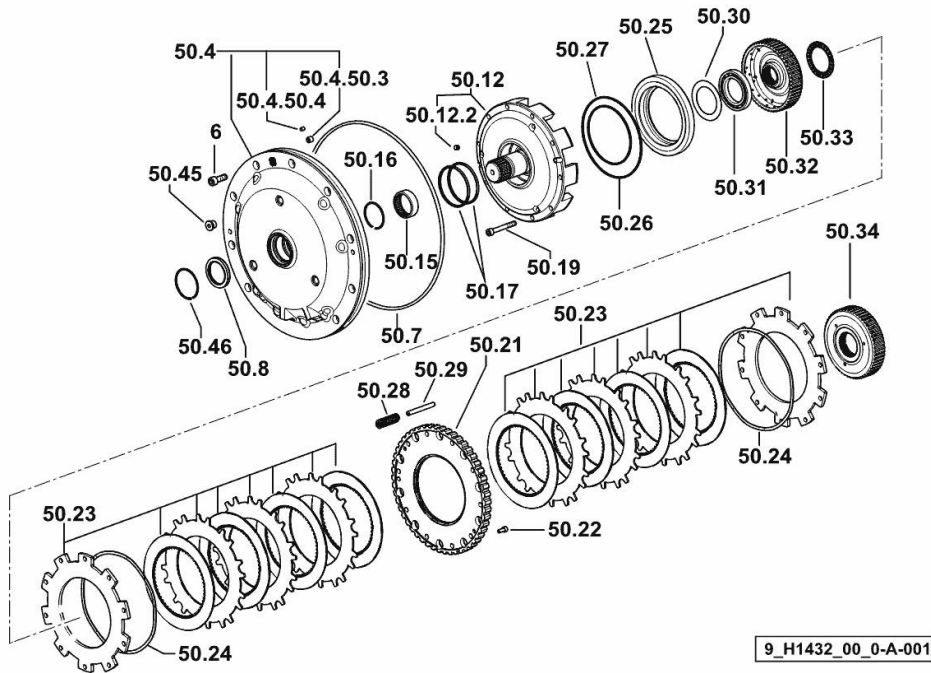
9_H1433_01_0-G-001

Section: D0 - TRANSMISSION
HYDRAULIC SHUTTLE

Fig.	P/n	QTY	Name
------	-----	-----	------

Notes:
 [XB 85 TB ->5001]

6	2.0312.310.2	9	screw m 10 p.1.5 x 30
50.4	0.013.9374.3/70	1	cover
50.4.50.3	2.0512.303.2	4	grub screw m 10 p 1.5 x 10
50.4.50.4	2.0512.102.7	2	screw m 6 p.1 x 8
50.7	2.1539.228.0/10	1	oil seal
50.8	2.1529.166.0	1	oil seal
50.12	0.013.5434.3/60	1	drum
50.12.2	2.0512.202.7	2	screw m 8 p.1.25 x 8
50.15	2.2725.050.0	1	roller cage
50.16	2.1423.039.7	1	circlip
50.17	2.1499.254.0/10	4	ring 82
50.19	2.0312.219.2	10	screw m 8 p.1.25x65
50.21	0.012.9724.0/50	1	ring
50.22	2.0312.103.2	2	screw m 6 p.1 x 14
50.23	0.013.2921.3/30	2	clutch plate
50.24	2.4099.517.0	8	spring
50.25	0.012.9746.0/30	2	piston
50.26	2.1539.236.0	2	oil seal
50.27	2.1539.230.0/10	2	oil seal
50.28	2.4019.784.1	10	spring 3.6x16x62.5
50.29	2.1659.522.0	10	pin
50.30	2.1499.210.0	1	spring
50.31	2.2020.009.0	1	ball bearing
50.32	0.013.5485.0/40	1	hub
50.33	2.2999.228.0	1	roller cage 50x70x3
50.34	0.013.5484.0/30	1	hub
50.45	2.3120.009.4	3	plug m 14 p.1.5
50.46	2.1423.044.7	1	circlip

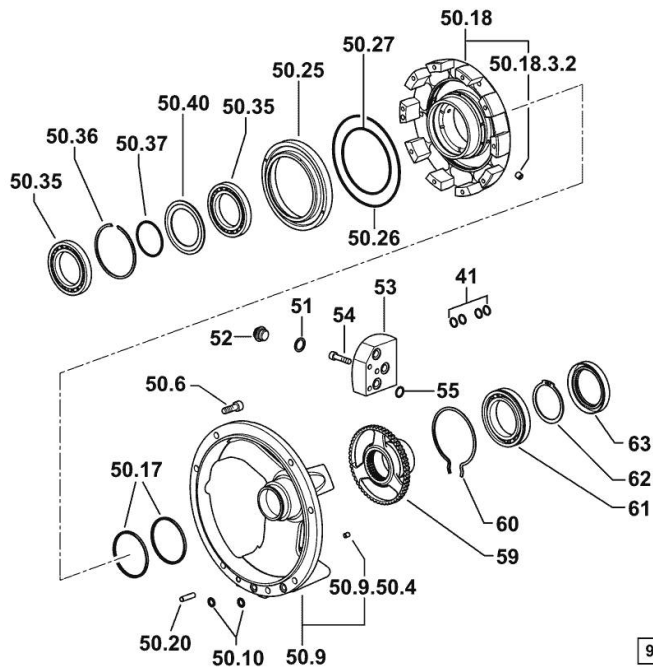


Section: D0 - TRANSMISSION
HYDRAULIC SHUTTLE

Fig.	P/n	QTY	Name
------	-----	-----	------

Notes:
 [XB 85 TB ->5001]

41	2.1532.035.0	12	oil seal 14x1.78
50.6	2.0312.310.2	7	screw m 10 p.1.5 x 30
50.9	0.013.9197.3/70	1	support
50.9.50.4	2.0512.102.7	4	screw m 6 p.1 x 8
50.10	2.1532.024.0	2	oil seal 10.77x2.62
50.17	2.1499.254.0/10	4	ring 82
50.18	0.013.5435.3/40	1	hub
50.18.3.2	2.0512.202.7	2	screw m 8 p.1.25 x 8
50.20	2.1655.410.0	2	pin 8x32
50.25	0.012.9746.0/30	2	piston
50.26	2.1539.236.0	2	oil seal
50.27	2.1539.230.0/10	2	oil seal
50.35	2.2020.011.0	2	bearing
50.36	2.1429.069.7	1	circlip
50.37	2.1422.037.7	1	circlip 60x1.5
50.40	0.013.5355.0	1	spacer Ø 67 - Ø 94.8
51	2.1560.014.0	1	washer 18.2 x 24
52	2.3110.405.2	1	plug m 18 p.1.5 x 15
53	0.014.9807.0	1	small block
54	2.0312.212.2	3	screw m 8 p.1.25 x 35
55	2.1539.142.0	3	special oil seal 15.54x2.62
59	0.014.9596.0	1	gear wheel
60	2.1499.242.7	1	circlip
61	2.2044.010.0	1	ball bearing
62	2.1410.026.7	1	circlip 65
63	2.1529.024.0	1	special oil seal 65x90x13



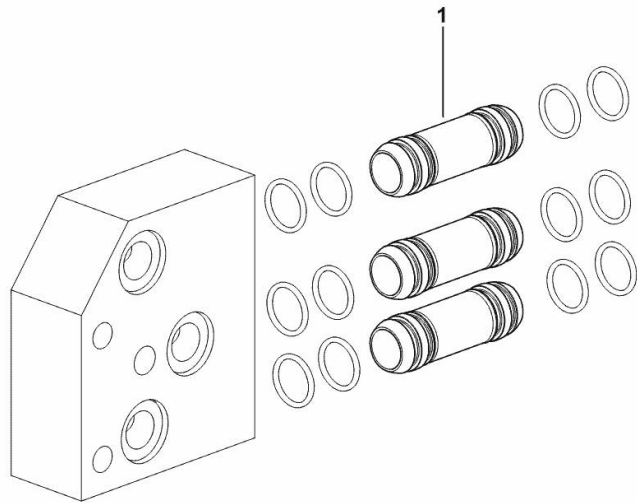
HYDRAULIC SHUTTLE SUPPLY PIPE WITH 5-SPEED TRANSMISSION

Fig.	P/n	QTY	Name
-------------	------------	------------	-------------

Notes:

[XB 85 TB ->5001]

1	0.014.9808.0	3	tube
---	--------------	---	------



9_H1432_01_0-A-001

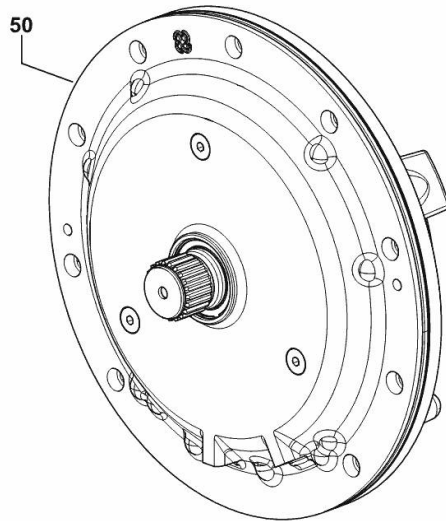
HYDRAULIC SHUTTLE - KPL.

Fig.	P/n	QTY	Name
------	-----	-----	------

Notes:

[XB 85 TB ->5001]

50	0.018.7825.4/20	1	shuttle kpl.
----	-----------------	---	--------------



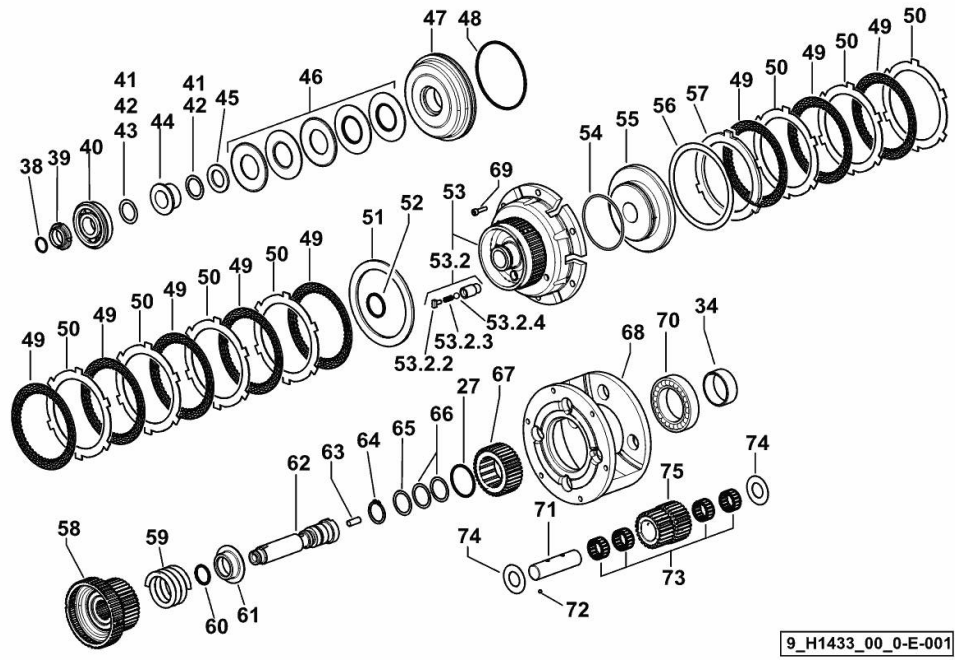
9_H1432_00_0-F-001

CLUTCHES ASSEMBLY WITH 5-SPEED GEARBOX

Fig.	P/n	QTY	Name
------	-----	-----	------

Notes:

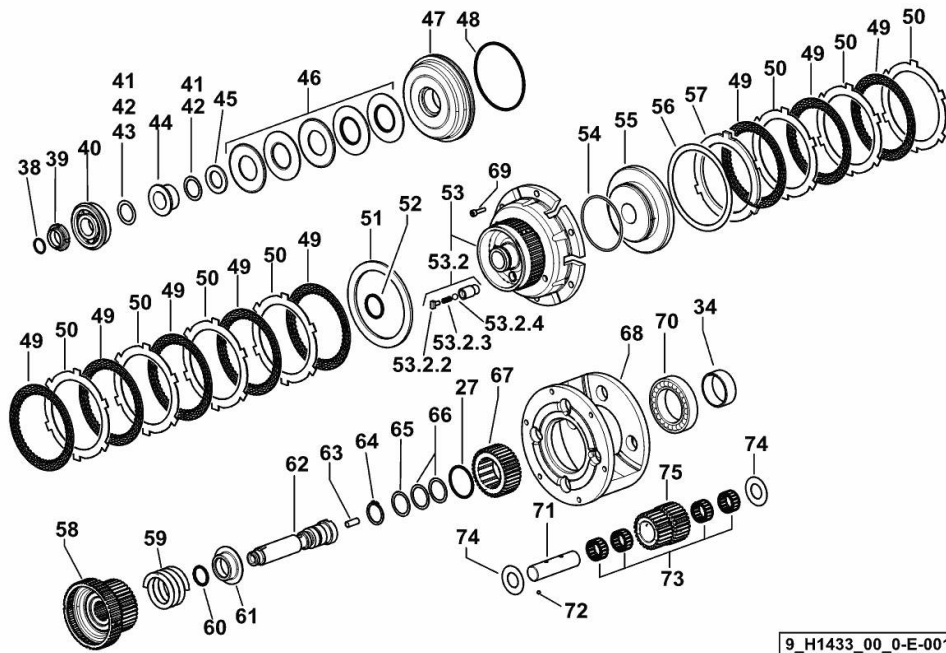
- FOR TYPES WITH HI - LO [XB 85 TB ->5001]



27	2.1499.153.7	7	circlip 41 x 1.5
34	2.1559.333.0	2	special bushing 44.7 x 50 x 19
38	2.1499.089.0	1	ring 20
39	2.1214.006.7	1	ring nut m 25 p.1.5
40	2.2062.007.0	1	ball bearing 25 x 62 x 17
41	2.1580.140.0	6	shim 25.5 x 35 x 0.5
42	2.1580.139.0	3	shim 25.5 x 35 x 0.2
43	2.1580.138.0	1	shim 25.5 x 35 x 0.15
44	2.1559.215.0	1	special bushing 25 x 35.5 x 18
45	2.1599.570.0	1	shim 25.2 x 40 x 3
46	2.1499.076.0/10	5	spring 36
47	0.007.3419.0/20	1	piston
48	2.1539.098.0	1	special oil seal 94.92 x 2.62
49	0.255.3970.2/10	8	disc
50	0.013.9453.0	7	disc mm 1.75
51	2.1599.569.0	1	shim 99.5 x 125 x 4.0
52	2.1539.095.0	1	oil seal 29.82 x 2.62
53	0.014.9615.4/10	1	box
53.2	0.007.3557.3	2	valve
53.2.2	0.007.3558.0	1	ferrule
53.2.3	2.4019.408.1	1	spring
53.2.4	2.2810.003.0	1	ball mm 7.144
54	2.1539.097.0	1	special oil seal 75.87 x 2.62
55	0.007.3420.0/10	1	piston
56	2.1599.499.0	1	shoulder ring 110 x 126.5 x 1.2
57	0.255.3969.0/10	1	disc
58	0.014.9453.3	1	gear
59	2.4019.425.1	1	spring
60	2.1539.096.0	1	special oil seal
61	0.007.3445.0	1	cup
62	0.007.3446.0/40	1	pin
63	0.007.3454.0	1	tube
64	2.1410.011.1	1	circlip 28
65	2.1580.113.0	1	shim mm 0.50
66	2.1580.117.0	2	shim mm 0.20
67	0.014.9452.0	1	gear
68	0.014.9652.0	1	spider
69	2.0132.006.2	6	screw m 8 p.1.25 x 20
70	2.2030.011.0	1	ball bearing 50 x 80 x 16
71	0.014.9695.0/10	4	pin
72	2.2819.003.0	4	ball 4.5

CLUTCHES ASSEMBLY WITH 5-SPEED GEARBOX

Fig.	P/n	QTY	Name
73	2.2770.174.0	16	roller cage
74	2.1589.552.0	8	shoulder 22x42x1
75	0.014.9705.3	1	planet gear n. 4



9_H1433_00_0-E-001

Thank you so much for reading.
Please click the “Buy Now!”
button below to download the
complete manual.



After you pay.

You can download the most
perfect and complete manual in
the world immediately.

Our support email:

ebooklibonline@outlook.com