

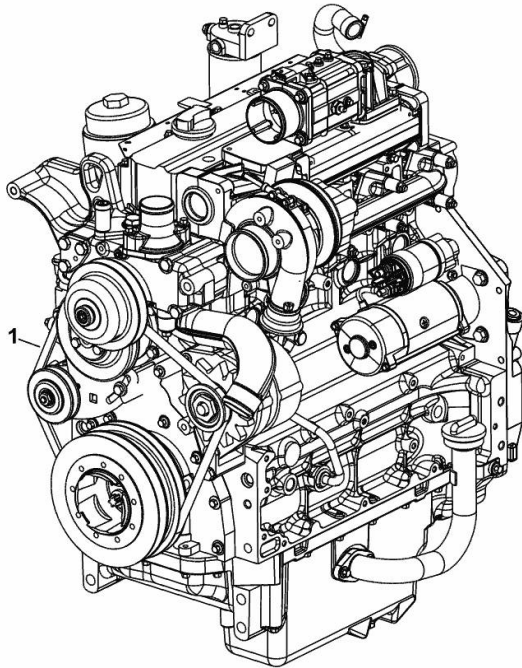
ENGINE

| Fig. | P/n | QTY | Name |
|-------------|------------|------------|-------------|
|-------------|------------|------------|-------------|

Notes:

- NOT FOR EUROPEAN MARKET [XB MAX 100 -> 16001]

| | | | |
|---|----------|---|---|
| 1 | 25009744 | 1 | engine ON ORDERING PLEASE ENGINE NO. REQUIRED |
|---|----------|---|---|



9_03019_05_0-A-001

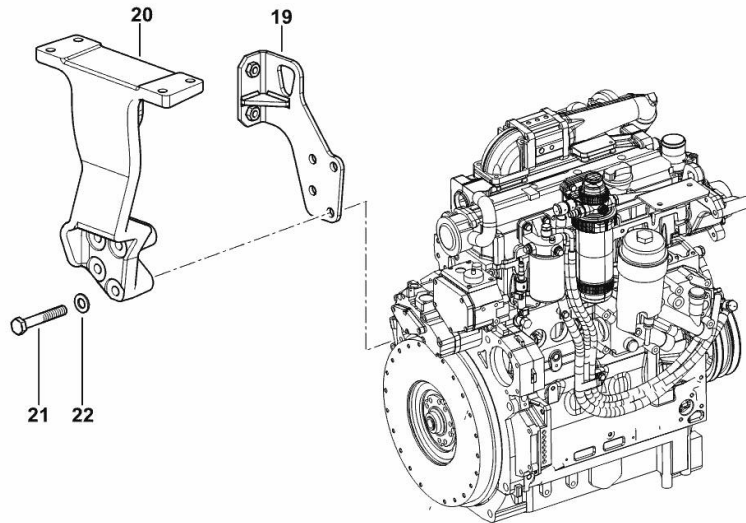
SUPPORTS

| Fig. | P/n | QTY | Name |
|-------------|------------|------------|-------------|
|-------------|------------|------------|-------------|

Notes:

[XB MAX 100 -> 16001]

| | | | |
|----|-----------------|---|---------------------|
| 19 | 0.014.9247.3/20 | 1 | bracket |
| 20 | 0.010.6442.0/10 | 1 | bracket |
| 21 | 2.0112.322.2 | 4 | screw m 10 p.1.5x65 |
| 22 | 2.1475.003.2 | 4 | washer 10 |



9_O3016_01_0-B-001

FASTENINGS

| Fig. | P/n | QTY | Name |
|-------------|------------|------------|-------------|
|-------------|------------|------------|-------------|

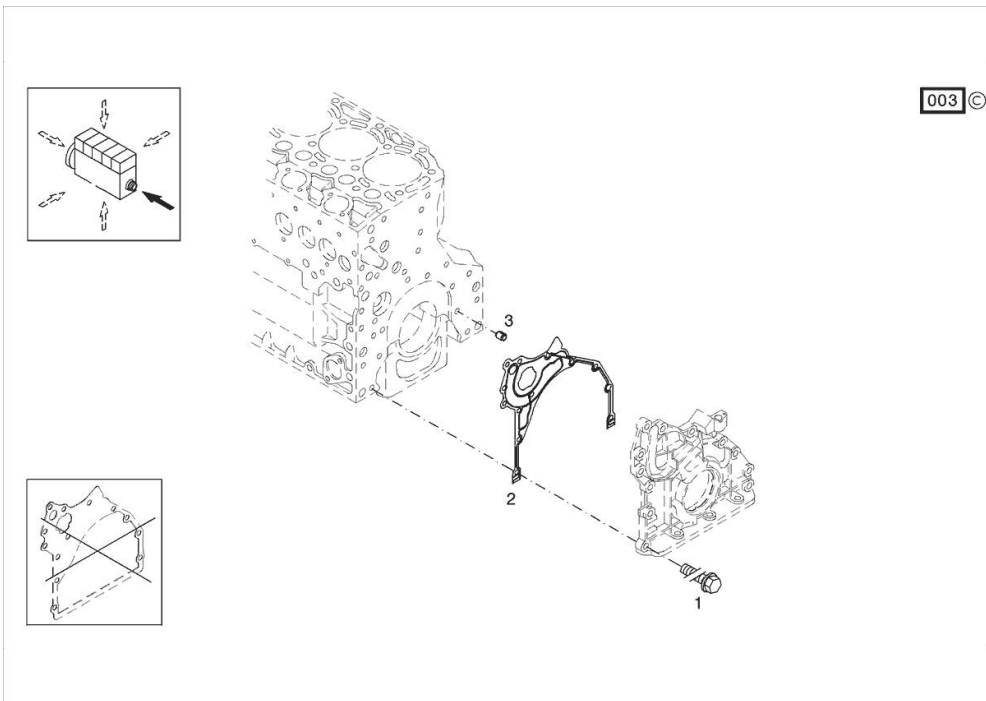
Notes:

[XB MAX 100 -> 16001]

Engine serial number:

10812866 10817212 10817217 10817218 10835195 10835196 10842049 10861348 10868468 10881937 10961620
 11039729 11039730 11039783 11083039 11147630 11161752 11176556 11176557 11182190 11182194 11185043
 11288910 11288913

| | | | |
|---|----------|----|---------------------------------------|
| 1 | 01183645 | 12 | screw EN 1662 -F-M8X35-10.9-ZNAL-A |
| 2 | 04504325 | 1 | gasket |
| 3 | 01181406 | 1 | bushing H 2341 -B11X8-FE/ZN12C* |



Section: B0 - ENGINE

BLEEDING TUBE

| Fig. | P/n | QTY | Name |
|------|-----|-----|------|
|------|-----|-----|------|

Notes:

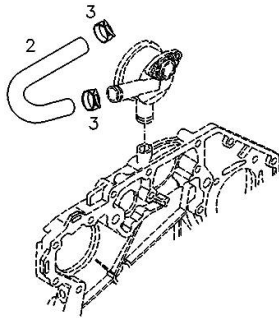
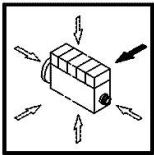
[XB MAX 100 -> 16001]

Engine serial number:

10812866 10817212 10817217 10817218 10835195 10835196 10842049 10861348 10868468 10881937 10961620
 11039729 11039730 11039783 11083039 11147630 11161752 11176556 11176557 11182190 11182194 11185043
 11288910 11288913

| | | | |
|---|----------|---|----------------------------|
| 2 | 04258132 | 1 | tube |
| 3 | 01178750 | 2 | clamp DIN 3021 -A-29X15 |

000 ©



0507 8829

CRANKCASE BREATHER

| Fig. | P/n | QTY | Name |
|------|-----|-----|------|
|------|-----|-----|------|

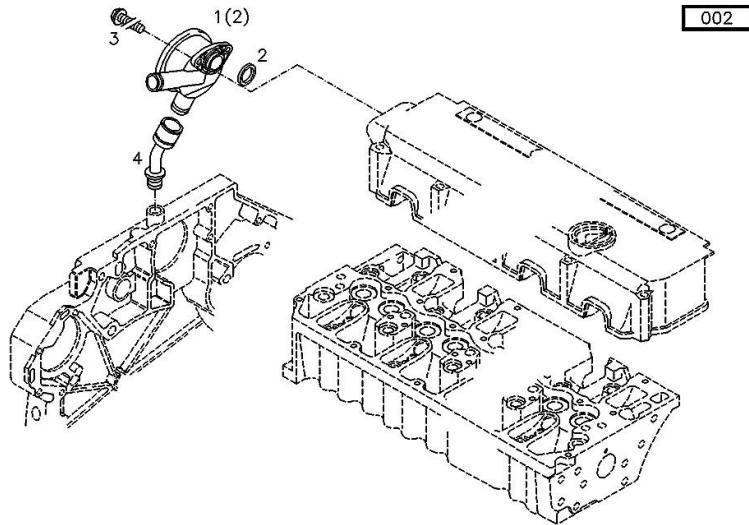
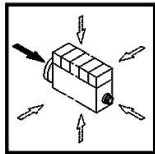
Notes:

[XB MAX 100 -> 16001]

Engine serial number:

10812866 10817212 10817217 10817218 10835195 10835196 10842049 10861348 10868468 10881937 10961620
 11039729 11039730 11039783 11083039 11147630 11161752 11176556 11176557 11182190 11182194 11185043
 11288910 11288913

| | | | |
|-----|----------|---|--|
| 1 | 04203321 | 1 | valve WITH POS.... (2) |
| 2 | 04206233 | 1 | gasket |
| 3 | 01148431 | 2 | screw - FROM THE MONTH OF ASSEMBLY SEE POS. (B) - UP TO THE MONTH OF ASSEMBLY (A) FROM THE MONTH OF ASSEMBLY A = 09.1995 B = POS. 950 ISO 4762 -M6X20-8.8-ZNAL-A |
| 4 | 04207290 | 1 | pipng |
| 5 | 01124654 | 2 | washer 6,4 d433 ISO 7092 -6-140HV-A4C* |
| 950 | 01181965 | 2 | screw - UP TO MONTH OF ASSEMBLY (A) - FROM MONTH OF ASSEMBLY SEE POS. (B) A = 08.1995 B = POS. 3 EN 1662 -F-M6X20-10.9-ZNAL-A |

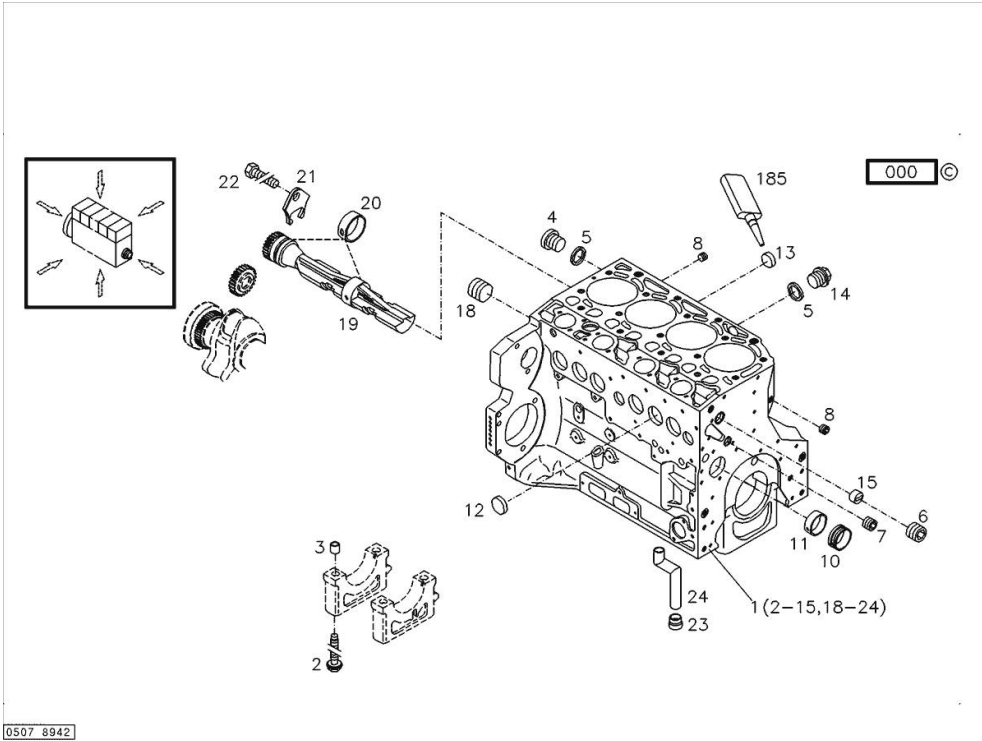


Section: B0 - ENGINE
KURBELGEHAEUSE

| Fig. | P/n | QTY | Name |
|------|-----|-----|------|
|------|-----|-----|------|

Notes:

[XB MAX 100 -> 16001]



| | | | |
|-----|----------|----|---|
| 185 | 01319911 | 1 | sealing compound ml. 50 |
| 1 | 04289939 | 1 | crankcase MIT POS.... (2-15,18-24) |
| 2 | 04254240 | 10 | screw 50 Nm , 90° , 90° |
| 3 | 04160764 | 10 | bushing |
| 4 | 01110423 | 1 | screw 35 Nm DIN 908 -M14X1,5-ST-ZNPHRF |
| 5 | 01118693 | 3 | gasket 14x20 DIN 7603 -A14X20-CU |
| 6 | 01180890 | 1 | screw 95 Nm H 2812 -906-M30X1,5-ST-A4C-PRE80 |
| 7 | 01180906 | 1 | screw H 2812 -906-M22X1,5-ST-A4C-PRE80 |
| 8 | 01182031 | 2 | screw 35 Nm H 2812 -906-M14X1,5-ST-A3C-LOCTITE506 |
| 10 | 04251884 | 4 | plug |
| 11 | 04250086 | 1 | ring |
| 12 | 01148032 | 6 | cover DIN 443 -A45-ZNPHR |
| 13 | 01179634 | 4 | plug H 2860 -A36-ST-FE/ZNPHR |
| 14 | 01100940 | 2 | screw 35 Nm DIN 7604 -AM14X1,5-ST-A4C |
| 15 | 04202518 | 1 | sleeve |
| 18 | 04226536 | 1 | bottom 30 Nm |
| 19 | 04259301 | 2 | shaft |
| 20 | 04252834 | 4 | bush |
| 21 | 04251810 | 2 | plug |
| 22 | 01181672 | 2 | nut H 2091 -4017-M8X16-10.9-GESCHW-MK-1.0 |
| 23 | 04255998 | 1 | ring |
| 24 | 04254026 | 1 | piping |

OIL FILLER NECK

| Fig. | P/n | QTY | Name |
|------|-----|-----|------|
|------|-----|-----|------|

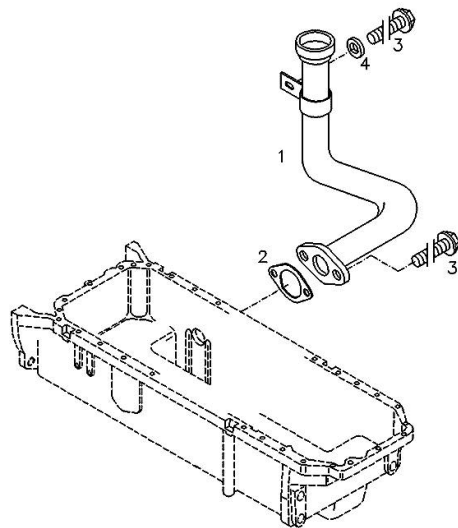
Notes:

[XB MAX 100 -> 16001]

Engine serial number:

10812866 10817212 10817217 10817218 10835195 10835196 10842049 10861348 10868468 10881937 10961620
 11039729 11039730 11039783 11083039 11147630 11161752 11176556 11176557 11182190 11182194 11185043
 11288910 11288913

| | | | |
|---|----------|---|---|
| 1 | 04251494 | 1 | tube |
| 2 | 01178421 | 1 | gasket DIN 71511 -35X58X1,5-DEUTZFW31 |
| 3 | 01181433 | 3 | screw EN 1662 -F-M8X20-LG2,5-10.9-ZNAL-A |
| 4 | 01214459 | 1 | washer 8,5x20x5 |



000

ACCESSORIES

| Fig. | P/n | QTY | Name |
|-------------|------------|------------|-------------|
|-------------|------------|------------|-------------|

Notes:

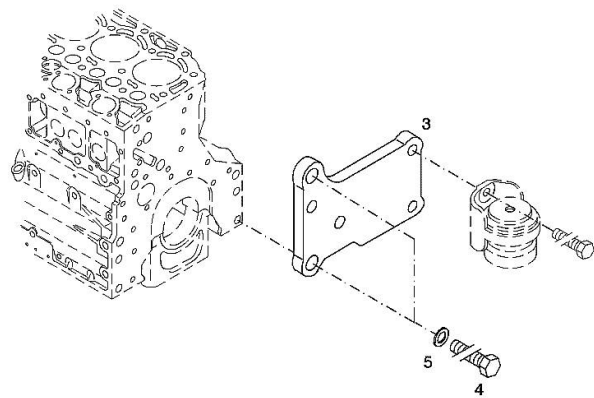
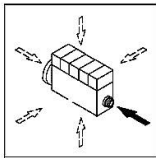
[XB MAX 100 -> 16001]

Engine serial number:

10812866 10817212 10817217 10817218 10835195 10835196 10842049 10861348 10868468 10881937 10961620
 11039729 11039730 11039783 11083039 11147630 11161752 11176556 11176557 11182190 11182194 11185043
 11288910 11288913

| | | | |
|---|----------|---|---------------------------------------|
| 3 | 04288659 | 1 | support |
| 4 | 01148261 | 2 | screw ISO 4017 -M16X40-10.9-ZNAL-A |
| 5 | 01181400 | 2 | washer H 2308 -18X25X1,5-A4C |

006 ©



ACCESSORIES

| Fig. | P/n | QTY | Name |
|-------------|------------|------------|-------------|
|-------------|------------|------------|-------------|

Notes:

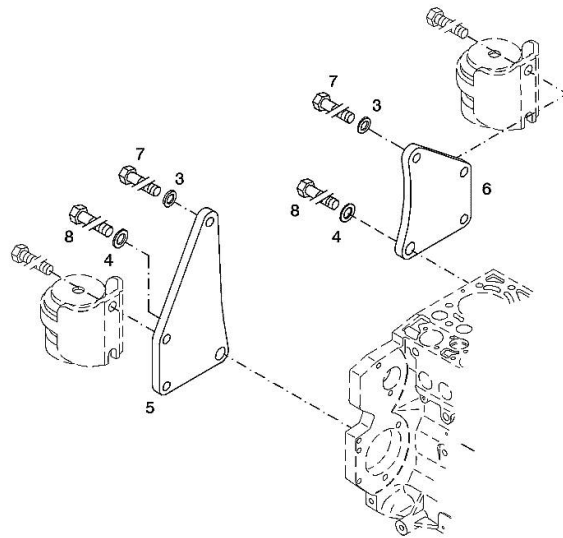
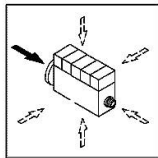
[XB MAX 100 -> 16001]

Engine serial number:

10812866 10817212 10817217 10817218 10835195 10835196 10842049 10861348 10868468 10881937 10961620
 11039729 11039730 11039783 11083039 11147630 11161752 11176556 11176557 11182190 11182194 11185043
 11288910 11288913

003 ©

| | | | |
|-----|----------|---|--|
| 3 | 01182016 | 2 | disc H 2308 -13X24X3-ZNAL-A |
| 4 | 01181400 | 2 | washer H 2308 -18X25X1,5-A4C |
| 5 | 04206926 | 1 | plate dx/rh/re |
| 6 | 04206927 | 1 | plate sx/lh/li |
| 7 | 01148137 | 2 | screw - UP TO MONTH OF ASSEMBLY (A) - FROM MONTH OF ASSEMBLY SEE POS. (B) A = 06.2009 B = POS. 950 DIN 931 -M12X75-10.9-ZNAL-A |
| 8 | 01148037 | 2 | screw UP TO MONTH OF ASSEMBLY (A) - FROM MONTH OF ASSEMBLY SEE POS. (B) A = 06.2009 B = POS. 951 ISO 4014 -M16X75-10.9-OELGESCHW |
| 950 | 01149017 | 2 | screw - FROM MONTH OF ASSEMBLY SEE POS. (B) - UP TO MONTH OF ASSEMBLY (A) FROM MONTH OF ASSEMBLY A = 07.2009 B = 7 DIN 34800 -BM12X75-10.9-ZNAL-A |
| 951 | 01180235 | 2 | screw - FROM MONTH OF ASSEMBLY SEE POS. (B) - UP TO MONTH OF ASSEMBLY (A) FROM MONTH OF ASSEMBLY A = 07.2009 B= Pos.8 H 2032 -HBM16X75-10.9-GESCHW |



ACCESSORIES

| Fig. | P/n | QTY | Name |
|-------------|------------|------------|-------------|
|-------------|------------|------------|-------------|

Notes:

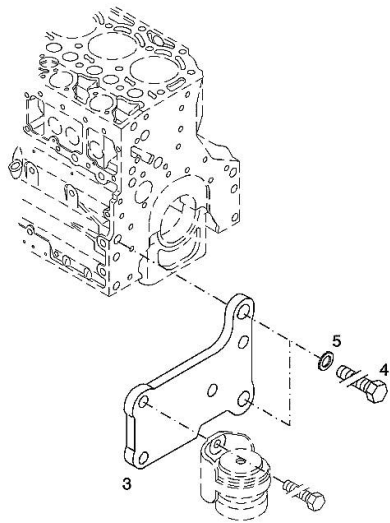
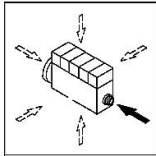
[XB MAX 100 -> 16001]

Engine serial number:

10812866 10817212 10817217 10817218 10835195 10835196 10842049 10861348 10868468 10881937 10961620
 11039729 11039730 11039783 11083039 11147630 11161752 11176556 11176557 11182190 11182194 11185043
 11288910 11288913

| | | | |
|---|----------|---|---------------------------------------|
| 3 | 04288660 | 1 | support |
| 4 | 01148261 | 2 | screw ISO 4017 -M16X40-10.9-ZNAL-A |
| 5 | 01181400 | 2 | washer H 2308 -18X25X1,5-A4C |

003 ©



FILLER CAP

| Fig. | P/n | QTY | Name |
|------|-----|-----|------|
|------|-----|-----|------|

Notes:

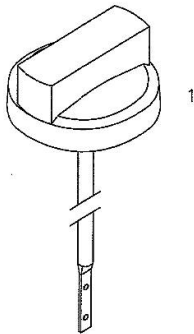
[XB MAX 100 -> 16001]

Engine serial number:

10812866 10817212 10817217 10817218 10835195 10835196 10842049 10861348 10868468 10881937 10961620
11039729 11039730 11039783 11083039 11147630 11161752 11176556 11176557 11182190 11182194 11185043
11288910 11288913

| | | | |
|---|----------|---|--------------------------------------|
| 1 | 01180286 | 1 | plug H 2875 -B2-OL40-166X4-130X12 |
|---|----------|---|--------------------------------------|

000



PISTON COOL.NOZZLE

| Fig. | P/n | QTY | Name |
|------|-----|-----|------|
|------|-----|-----|------|

Notes:

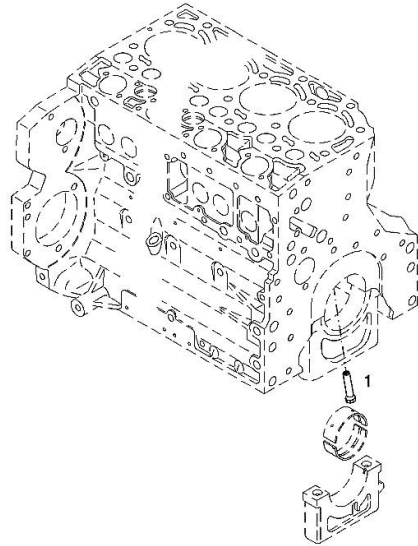
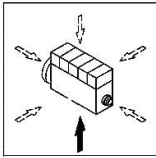
[XB MAX 100 -> 16001]

Engine serial number:

10812866 10817212 10817217 10817218 10835195 10835196 10842049 10861348 10868468 10881937 10961620
 11039729 11039730 11039783 11083039 11147630 11161752 11176556 11176557 11182190 11182194 11185043
 11288910 11288913

| | | | |
|---|----------|---|----------|
| 1 | 04207521 | 1 | sprayers |
|---|----------|---|----------|

001 ©



FLANGE

| Fig. | P/n | QTY | Name |
|------|-----|-----|------|
|------|-----|-----|------|

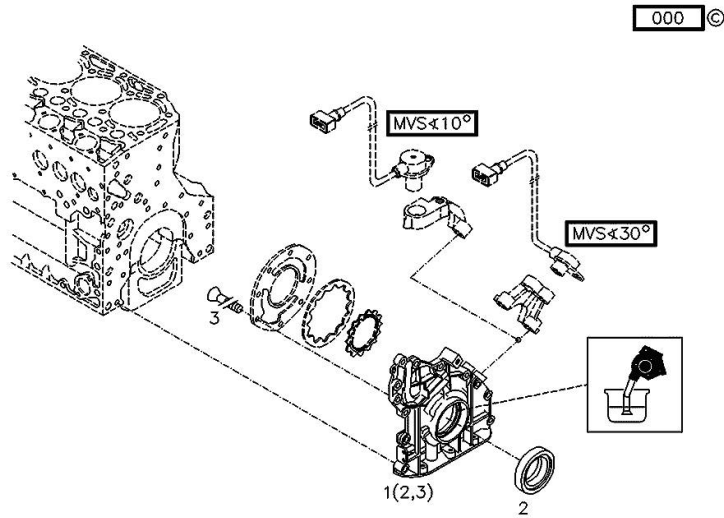
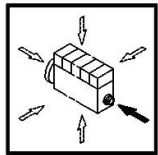
Notes:

[XB MAX 100 -> 16001]

Engine serial number:

10812866 10817212 10817217 10817218 10835195 10835196 10842049 10861348 10868468 10881937 10961620

| | | | |
|---|----------|---|----------------------------------|
| 1 | 04283992 | 1 | oil pump WITH POS.... (2,3) |
| 2 | 04253372 | 1 | oil seal |
| 3 | 01133718 | 8 | screw DIN 7991 -M6X16-8.8-A4C |



Section: B0 - ENGINE
KURBELGEHAEUSE

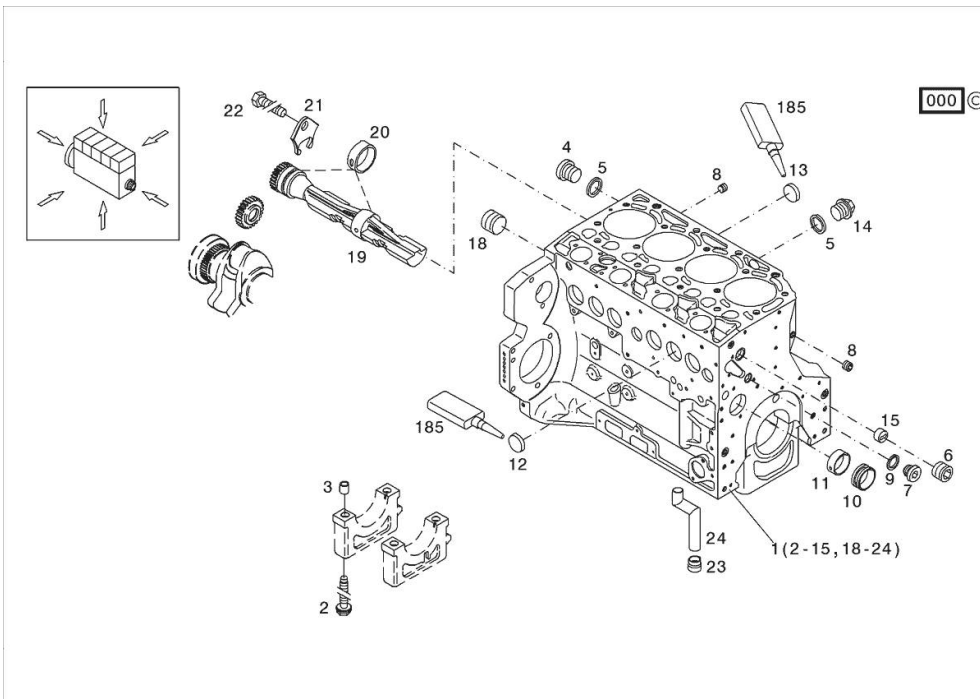
| Fig. | P/n | QTY | Name |
|------|-----|-----|------|
|------|-----|-----|------|

Notes:

[XB MAX 100 -> 16001]

Engine serial number:

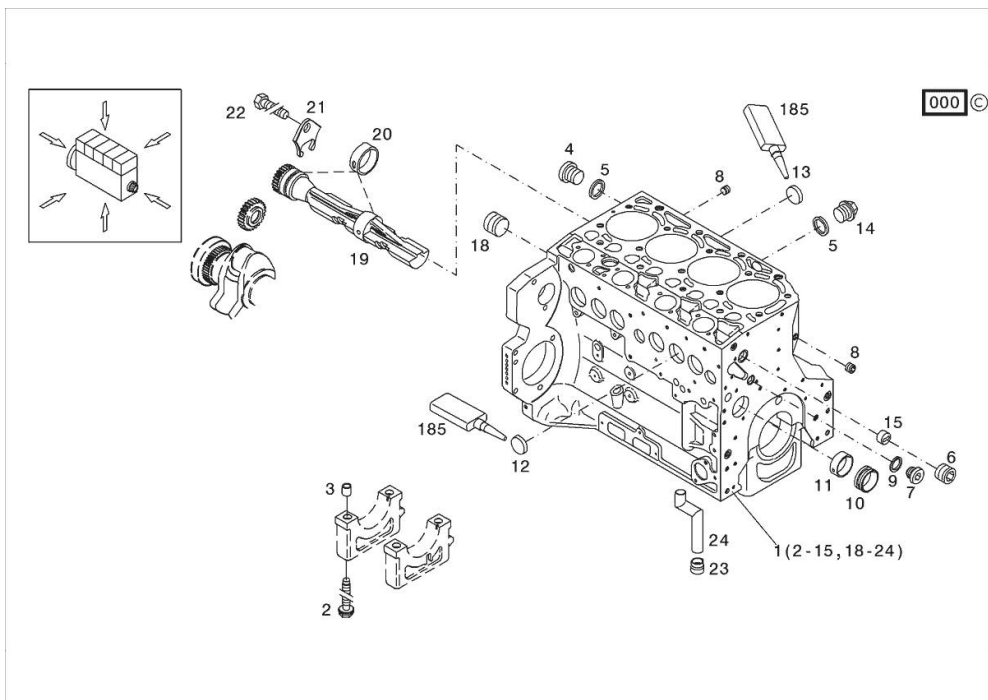
10812866 10817212 10817217 10817218 10835195 10835196 10842049 10861348 10868468 10881937 10961620
 11039729 11039730 11039783 11083039 11147630 11161752 11176556 11176557 11182190 11182194 11185043



| | | | |
|-----|----------|----|---|
| 185 | 01319911 | 1 | sealing compound ml. 50 |
| 1 | 04297344 | 1 | crankcase MIT POS... (2-15,18-24) |
| 2 | 04254240 | 10 | screw 50 Nm , 90° , 90° |
| 3 | 04160764 | 10 | bushing |
| 4 | 01110423 | 1 | screw 35 Nm DIN 908 -M14X1,5-ST-ZNPHRF |
| 5 | 01118693 | 3 | gasket 14x20 DIN 7603 -A14X20-CU |
| 6 | 01180890 | 1 | screw 95 Nm H 2812 -906-M30X1,5-ST-A4C-PRE80 |
| 7 | 04292706 | 1 | plug 80 Nm |
| 8 | 01182031 | 2 | screw 35 Nm H 2812 -906-M14X1,5-ST-A3C-LOCTITE506 |
| 9 | 01101342 | 1 | oil seal DIN 7603 -D22X27-CU |
| 10 | 04251884 | 4 | plug |
| 11 | 04250086 | 1 | ring |
| 12 | 01148032 | 6 | cover DIN 443 -A45-ZNPHR |
| 13 | 01148031 | 4 | plug DIN 443 -A36-ZNPHR |
| 14 | 01100940 | 2 | screw 35 Nm DIN 7604 -AM14X1,5-ST-A4C |
| 15 | 04202518 | 1 | sleeve |
| 18 | 04226536 | 1 | bottom 30 Nm |
| 19 | 04298243 | 2 | shaft |
| 20 | 04252834 | 4 | bush |
| 21 | 04251810 | 2 | plug |

KURBELGEHAEUSE

| Fig. | P/n | QTY | Name |
|------|----------|-----|--|
| 22 | 01181672 | 2 | nut H 2091 -4017-M8X16-10.9-GESCHW-MK-1.0 |
| 23 | 04255998 | 1 | ring |
| 24 | 04291215 | 1 | tube |



Thank you so much for reading.
Please click the “Buy Now!”
button below to download the
complete manual.



After you pay.

You can download the most
perfect and complete manual in
the world immediately.

Our support email:

ebooklibonline@outlook.com