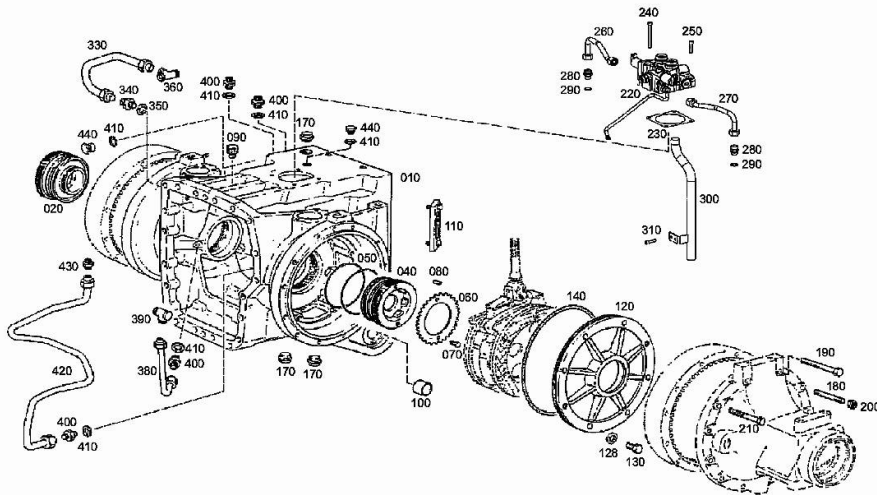
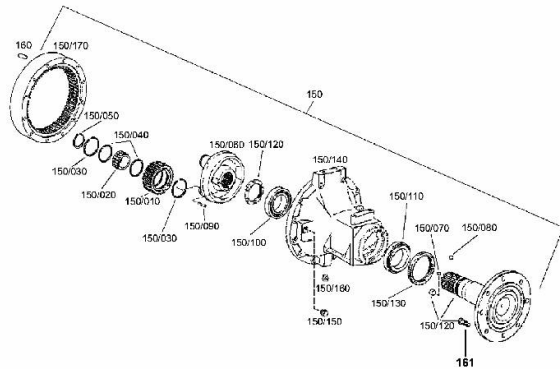


REAR GEARBOX CASE 2093 009 120

| Fig. | P/n | QTY | Name |
|------|--------------|-----|------------------|
| 10 | 0.900.0001.7 | 1 | gear box |
| 20 | 04428944 | 1 | register |
| 40 | 04428945 | 1 | register |
| 50 | 0.900.0278.7 | 2 | ring |
| 60 | 04417449 | 2 | plate |
| 70 | 04435695 | 4 | screw m 8 x 16 |
| 80 | 04435703 | 2 | pin 5 x 20 |
| 90 | 04417453 | 1 | plug |
| 100 | 04417451 | 2 | bushing |
| 110 | 04419731 | 1 | level indicator |
| 120 | 0.900.1239.5 | 2 | cover |
| 128 | 0.900.0277.9 | 4 | washer |
| 130 | 0.900.0279.7 | 16 | screw m 12 x 40 |
| 140 | 04428220 | 2 | oil seal 305x4 |
| 170 | 0.010.3849.1 | 3 | plug |
| 180 | 0.900.0456.5 | 4 | screw m 12x150 |
| 190 | 04423328 | 4 | screw |
| 200 | 0.900.0281.4 | 4 | nut m 12 |
| 210 | 0.900.0469.3 | 16 | screw m 12x140 |
| 220 | 0.900.0984.8 | 1 | valve |
| 230 | 0.900.0885.3 | 1 | gasket |
| 240 | 0.900.0882.4 | 2 | screw m 8x95 |
| 250 | 0.900.0882.1 | 2 | screw m 8 x 40 |
| 260 | 0.900.0954.0 | 1 | gasket |
| 270 | 0.900.0954.1 | 1 | piping |
| 280 | 0.900.0282.3 | 2 | pipe union |
| 290 | 0.900.0985.0 | 2 | oil seal 18 x 24 |
| 300 | 0.900.0883.3 | 1 | tube |
| 310 | 04434509 | 2 | screw m 8 x 30 |
| 330 | 0.010.2899.1 | 1 | piping |
| 340 | 0.900.0470.4 | 1 | pipe union |
| 350 | 01118737 | 1 | oil seal 22 x 27 |
| 360 | 04435710 | 1 | vent |
| 380 | 04435711 | 1 | tube |
| 390 | 04417707 | 1 | pipe fitting |
| 400 | 04417466 | 4 | pipe fitting |
| 410 | 04423731 | 6 | oil seal 14 x 18 |
| 420 | 0.010.2899.2 | 1 | tube |
| 430 | 04417705 | 1 | vent |
| 440 | 0.900.0281.0 | 2 | plug m 14 p.1.5 |



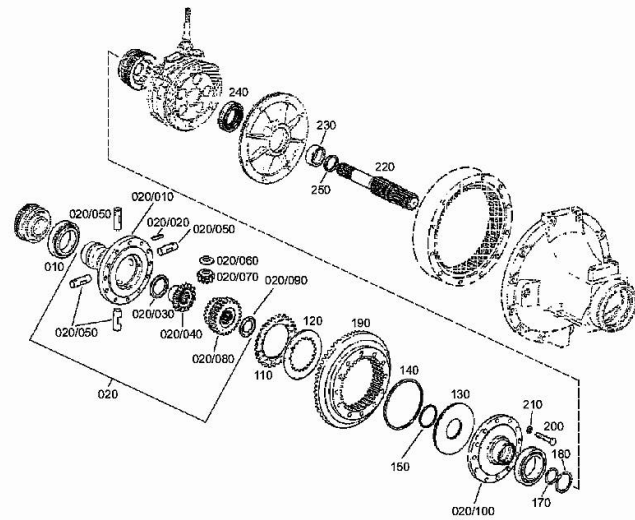
REAR GEARBOX CASE 2093 009 120



| Fig. | P/n | QTY | Name |
|---------|--------------|-----|------------------------|
| 150 | 0.900.1359.0 | 2 | counter shaft |
| 150.10 | 0.900.1364.0 | 3 | planet gear |
| 150.20 | 0.900.0282.8 | 3 | roller bearing |
| 150.30 | 0.900.0278.1 | 6 | circlip |
| 150.40 | 0.900.0282.6 | 6 | slewing ring 72x80.8x1 |
| 150.50 | 0.010.2888.1 | 3 | circlip 55 x 2.0 |
| 150.60 | 0.900.0954.9 | 1 | spider |
| 150.70 | 0.010.3588.2 | 1 | grub screw m 10x16 |
| 150.80 | 04417322 | 1 | ball |
| 150.90 | 0.900.0278.3 | 1 | roll pin 8x90 |
| 150.100 | 0.010.3581.0 | 1 | roller bearing |
| 150.110 | 0.900.0953.8 | 1 | roller bearing |
| 150.120 | 0.900.0953.9 | 1 | shaft |
| 150.130 | 0.010.3642.2 | 1 | ring |
| 150.140 | 0.900.0955.0 | 1 | axle |
| 150.150 | 0.900.0001.8 | 2 | plug |
| 150.160 | 0.010.3849.0 | 1 | plug |
| 150.170 | 0.900.1363.9 | 1 | crown wheel |
| 160 | 0.900.0278.2 | 2 | pin 12 x 24 |
| 161 | 0.010.3703.2 | 8 | screw m 22 |

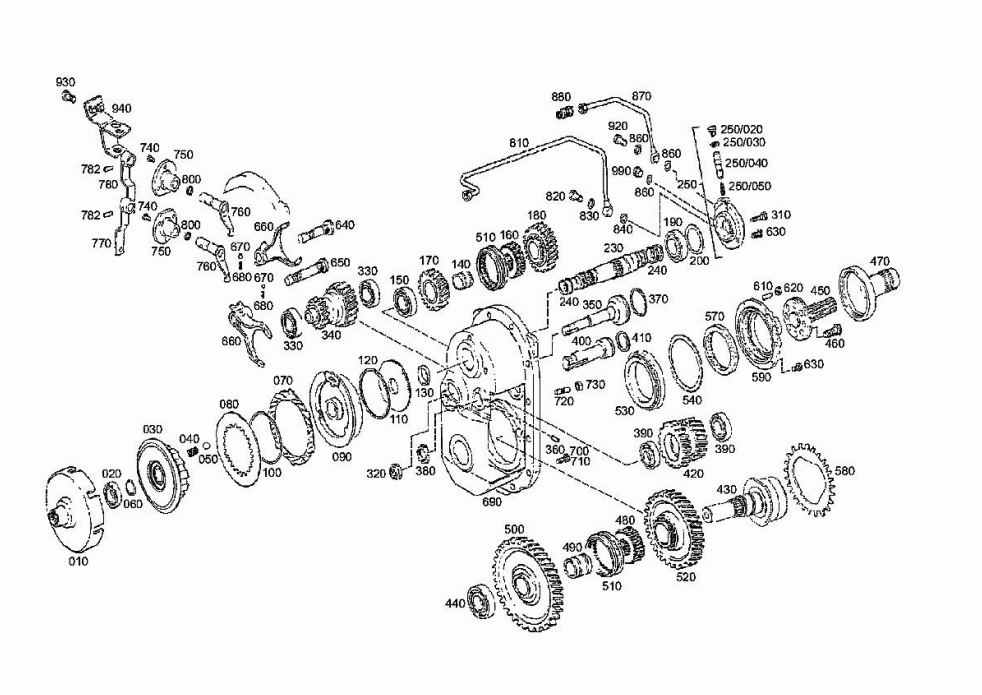
DIFFERENTIAL 2093 009 120

| Fig. | P/n | QTY | Name |
|--------|--------------|-----|----------------------|
| 10 | 0.010.3580.1 | 2 | roller bearing |
| 20 | 0.900.1385.4 | 1 | flange |
| 20.10 | 0.010.2889.1 | 1 | differential carrier |
| 20.20 | 0.010.2888.2 | 4 | pin 8 x 50 |
| 20.30 | 0.900.0498.2 | 1 | slewing ring |
| 20.40 | 0.010.2942.2 | 1 | crown wheel |
| 20.50 | 0.010.2890.1 | 4 | pin |
| 20.60 | 0.010.3845.2 | 4 | slewing ring |
| 20.70 | 0.010.3846.0 | 4 | planet gear |
| 20.80 | 0.010.2891.1 | 1 | crown wheel Z = 18 |
| 20.90 | 0.900.0124.3 | 1 | slewing ring |
| 20.100 | 04417604 | 1 | box |
| 110 | 0.900.1226.8 | 6 | disc Z = 46 |
| 120 | 0.900.1377.2 | 5 | disc Z = 41 |
| 130 | 0.010.3846.1 | 1 | piston |
| 140 | 0.900.0451.5 | 1 | oil seal |
| 150 | 0.900.0268.5 | 1 | oil seal 69 x 3 |
| 170 | 0.900.0800.7 | 1 | ring 55 x 2.5 |
| 180 | 0.900.0800.8 | 1 | ring 70 x 3.0 |
| 190 | 04423724 | 1 | crown wheel z = 63 |
| 200 | 0.010.3729.2 | 12 | screw m 12 x 80 |
| 210 | 0.900.0277.9 | 12 | washer |
| 220 | 0.010.2889.0 | 2 | shaft Z = 16 |
| 230 | 04417315 | 2 | bushing |
| 240 | 04417316 | 2 | oil seal |
| 250 | 0.900.0278.9 | 2 | ring 54 x 2.5 |



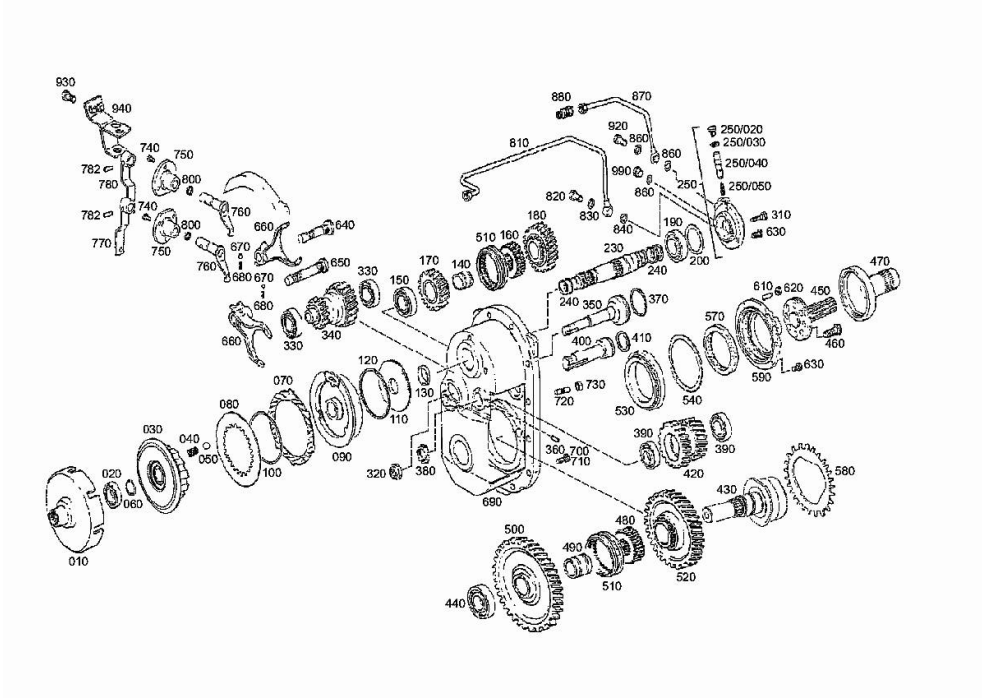
P.T.O. - POWER TAKE OFF 2093 009 120

| Fig. | P/n | QTY | Name |
|--------|--------------|-----|-----------------------|
| 10 | 0.900.0124.5 | 1 | clutch housing Z = 46 |
| 20 | 0.900.0469.0 | 1 | ball bearing |
| 30 | 0.900.0802.8 | 1 | adapter |
| 40 | 04417631 | 8 | spring |
| 50 | 04417632 | 8 | ball |
| 60 | 0.900.0467.7 | 1 | circlip 34x2.5 |
| 70 | 0.900.1377.3 | 5 | disc Z = 46 |
| 80 | 0.900.1226.7 | 5 | disc |
| 90 | 0.900.1363.0 | 1 | cylinder |
| 100 | 0.900.1431.4 | 5 | spring |
| 110 | 0.900.0123.4 | 1 | piston |
| 120 | 0.900.0056.8 | 1 | oil seal 112x3 |
| 130 | 04417638 | 1 | shoulder ring |
| 140 | 04417639 | 1 | special bushing |
| 150 | 0.900.1385.1 | 1 | bearing |
| 160 | 04417680 | 1 | support |
| 170 | 0.900.0885.4 | 1 | gear |
| 180 | 04436292 | 1 | gear Z = 35 |
| 190 | 0.900.1385.0 | 1 | bearing |
| 200 | 0.900.1380.1 | 1 | washer |
| 200 | 04417360 | 1 | shim s = 0.10 |
| 200 | 04417361 | 1 | shim s = 0.15 |
| 200 | 04417362 | 1 | shim s = 0.40 |
| 230 | 0.900.1363.1 | 1 | shaft |
| 240 | 04423359 | 5 | ring |
| 250 | 0.900.1235.6 | 1 | cover |
| 250.20 | 0.010.2906.0 | 1 | plug m 16 p.1.5 |
| 250.30 | 04436331 | 1 | oil seal 16 x 20 |
| 250.40 | 0.900.1386.4 | 1 | piston |
| 250.50 | 0.900.1384.9 | 1 | spring |
| 310 | 0.900.0280.0 | 1 | screw m 8 x 45 |
| 320 | 0.900.0124.8 | 1 | ring nut |
| 330 | 04431639 | 2 | bearing |
| 340 | 0.900.0451.9 | 1 | gear z=19 z=30 |
| 350 | 04417652 | 1 | pin |
| 360 | 04433234 | 2 | roll pin 6x20 |
| 370 | 0.900.0468.3 | 1 | oil seal 57x2 |
| 380 | 04424372 | 1 | ring nut |
| 390 | 04431639 | 2 | bearing |
| 400 | 04417656 | 1 | pin |
| 410 | 0.900.0468.6 | 1 | oil seal 40x3 |
| 420 | 0.900.0885.5 | 1 | gear |
| 430 | 0.900.0802.5 | 1 | shaft Z = 18 |
| 440 | 0.900.1385.0 | 1 | bearing |



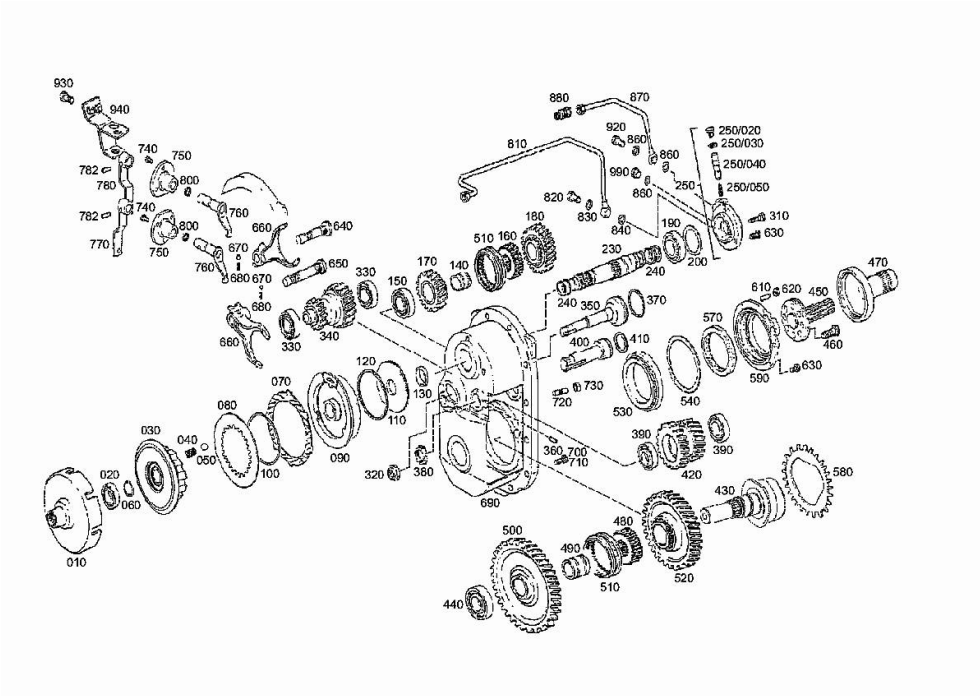
P.T.O. - POWER TAKE OFF 2093 009 120

| Fig. | P/n | QTY | Name |
|------|--------------|-----|---------------------|
| 450 | 04417388 | 1 | shaft |
| 460 | 0.010.3293.0 | 8 | screw m 12 x 50 |
| 470 | 04417440 | 1 | guard |
| 480 | 04417680 | 1 | support |
| 490 | 04417681 | 1 | special bushing |
| 500 | 0.900.0884.4 | 1 | gear z=66 |
| 510 | 04431727 | 2 | sleeve |
| 520 | 0.900.0877.3 | 1 | gear z=56 |
| 530 | 0.900.0282.9 | 1 | roller bearing |
| 540 | 0.900.1380.2 | 1 | shim |
| 540 | 04417391 | 1 | shim s = 0.10 |
| 540 | 04417392 | 1 | shim s = 0.15 |
| 540 | 04417393 | 1 | shim s = 0.40 |
| 570 | 04417395 | 1 | oil seal 94x118x12 |
| 580 | 0.900.1432.0 | 1 | gear |
| 590 | 04417438 | 1 | cover |
| 610 | 0.900.0281.3 | 4 | stud bolt m 8 x 35 |
| 620 | 0.900.0281.5 | 4 | nut m 8 |
| 630 | 04434498 | 4 | screw m 8 x 25 |
| 640 | 0.900.1432.6 | 1 | rod |
| 650 | 0.900.1432.7 | 1 | rod |
| 652 | 0.900.1377.9 | 1 | adhesive |
| 660 | 0.010.3848.1 | 2 | fork |
| 670 | 04415909 | 2 | ball |
| 680 | 04417378 | 2 | spring |
| 690 | 04423799 | 1 | box |
| 700 | 0.010.2893.2 | 1 | screw m 10 x 40 |
| 710 | 0.900.0307.8 | 9 | screw m10x35 |
| 720 | 0.900.0281.2 | 2 | stud bolt m 10 x 45 |
| 730 | 0.010.3358.0 | 2 | nut m 10 |
| 740 | 04435695 | 6 | screw m 8 x 16 |
| 750 | 04417692 | 2 | bearing |
| 760 | 04417693 | 2 | pin |
| 770 | 0.900.0122.9 | 1 | lever |
| 780 | 04413418 | 1 | lever |
| 782 | 0.010.2894.1 | 2 | pin 8 x 30 |
| 800 | 0.900.0278.8 | 2 | oil seal |
| 810 | 0.010.2894.2 | 1 | piping |
| 820 | 04427560 | 1 | pipe union |
| 830 | 04436331 | 1 | oil seal 16 x 20 |
| 840 | 0.010.2895.0 | 1 | gasket 14x20 |
| 860 | 04423731 | 3 | oil seal 14 x 18 |
| 870 | 0.900.1363.2 | 1 | tube |
| 880 | 04417466 | 1 | pipe fitting |



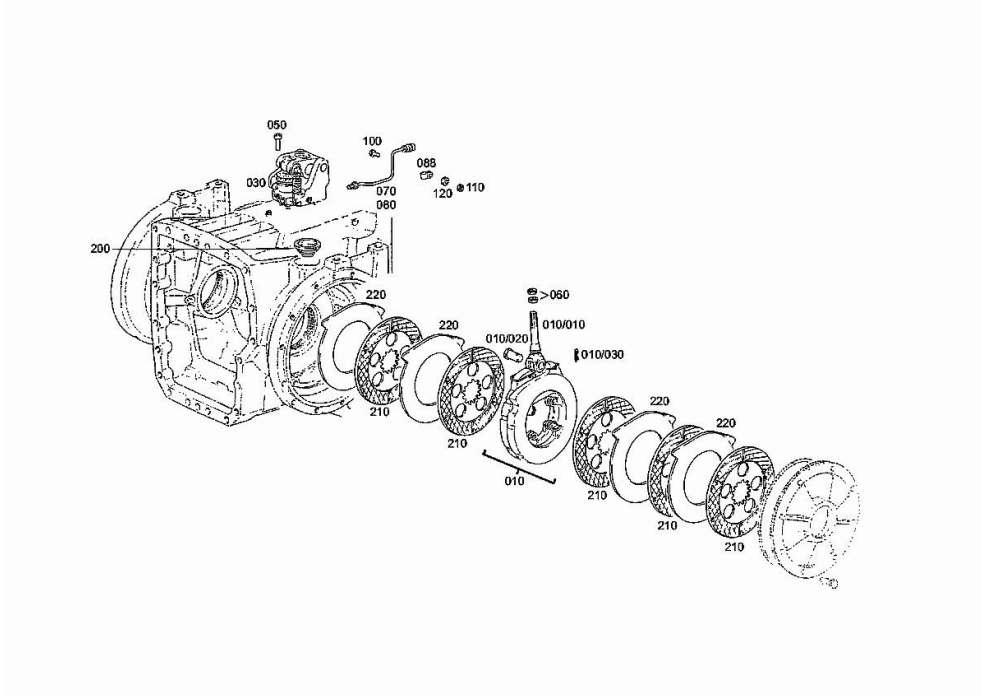
P.T.O. - POWER TAKE OFF 2093 009 120

| Fig. | P/n | QTY | Name |
|------|--------------|-----|----------------|
| 920 | 0.900.0282.1 | 1 | pipe union |
| 930 | 04434498 | 2 | screw m 8 x 25 |
| 940 | 04439216 | 1 | bracket |
| 990 | 0.900.0280.7 | 1 | stop |



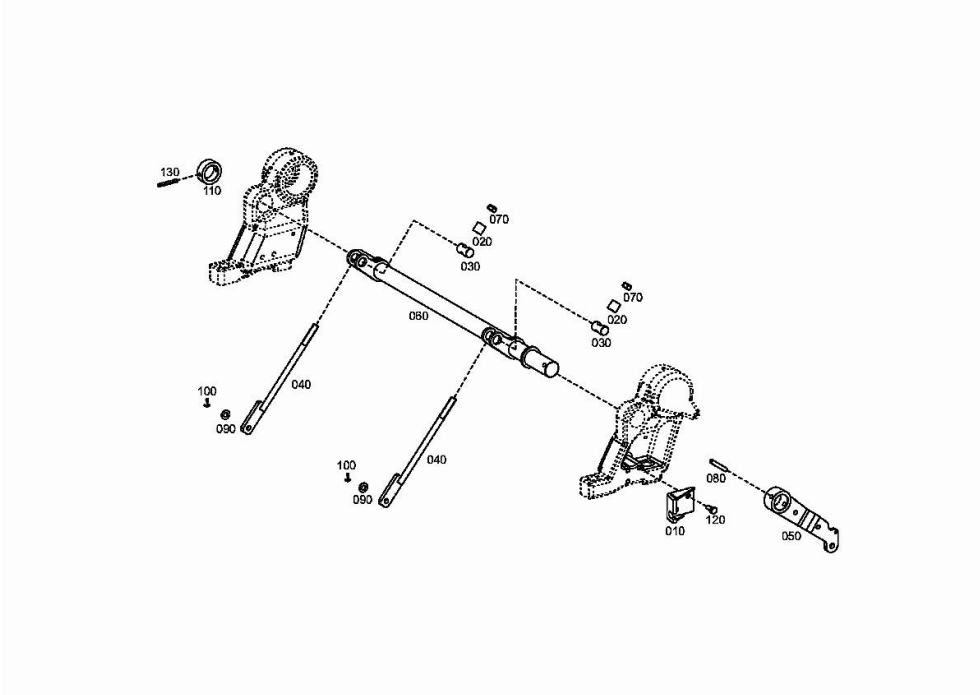
SERVICE BRAKES 2093 009 120

| Fig. | P/n | QTY | Name |
|-------|--------------|-----|--------------------|
| 10 | 0.900.0800.4 | 2 | transmission brake |
| 10.10 | 04428551 | 1 | rod |
| 10.20 | 04435740 | 1 | pin |
| 10.30 | 04435741 | 1 | split pin |
| 30 | 0.900.0800.5 | 2 | operation |
| 50 | 0.900.0469.7 | 6 | screw m 10 x 40 |
| 60 | 04434557 | 4 | nut m 14 p.1.5 |
| 70 | 04428545 | 1 | tube sx/lh/li |
| 80 | 04428546 | 1 | piping dx/rh/re |
| 88 | 0.900.0468.2 | 2 | clamp 6x12 |
| 100 | 0.900.0280.1 | 2 | screw m 5 x 25 |
| 110 | 0.900.0470.2 | 2 | nut m 5 |
| 120 | 0.900.0281.6 | 2 | nut |
| 200 | 0.900.0800.9 | 2 | rubber bushing |
| 210 | 0.900.0801.2 | 10 | disc |
| 220 | 0.900.0801.3 | 8 | disc |



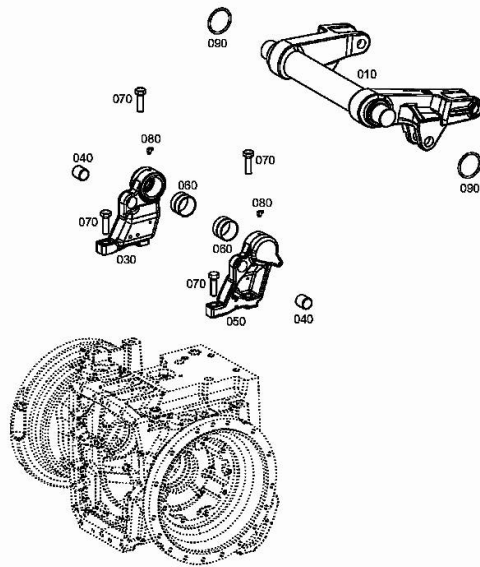
BRAKE CONTROLS 2093 009 120

| Fig. | P/n | QTY | Name |
|------|--------------|-----|-----------------------|
| 10 | 0.900.1239.7 | 1 | bracket |
| 20 | 0.900.1239.8 | 2 | tube |
| 30 | 0.900.1239.9 | 2 | pin |
| 40 | 0.900.1240.0 | 2 | rod |
| 50 | 0.900.1240.1 | 1 | lever |
| 60 | 0.900.1240.2 | 1 | shaft |
| 70 | 0.900.0281.9 | 2 | nut m 12 |
| 80 | 0.010.3459.1 | 1 | roll pin |
| 90 | 0.900.0466.9 | 2 | washer |
| 100 | 0.900.0468.1 | 2 | split pin 3.2x18 |
| 110 | 0.900.1240.3 | 1 | spacer |
| 120 | 0.900.0469.4 | 3 | screw m 8 p.1.25 x 20 |
| 130 | 0.010.2901.1 | 1 | pin 6x50 |



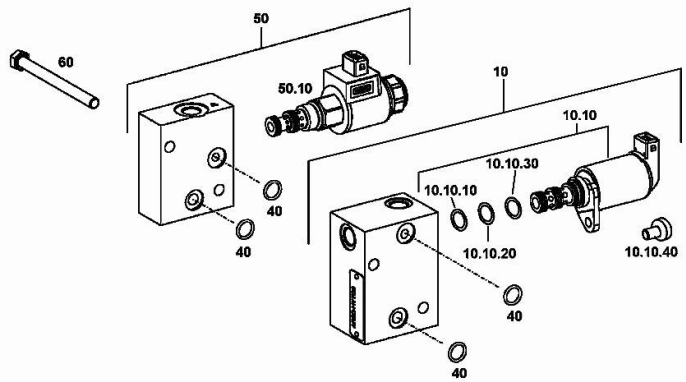
LIFTING 2093 009 120

| Fig. | P/n | QTY | Name |
|------|--------------|-----|------------------------|
| 10 | 0.900.0883.4 | 1 | shaft |
| 30 | 0.900.1407.9 | 1 | bearing block dx/rh/re |
| 40 | 0.900.1431.3 | 2 | bearing |
| 50 | 0.900.1408.0 | 1 | bearing block sx/lh/li |
| 60 | 04417549 | 2 | special bushing |
| 70 | 0.900.0469.1 | 4 | screw m 20x65 |
| 80 | 04427636 | 2 | grease gun m 8 p.1 x 8 |
| 90 | 04417552 | 2 | ring 78.5x6 |



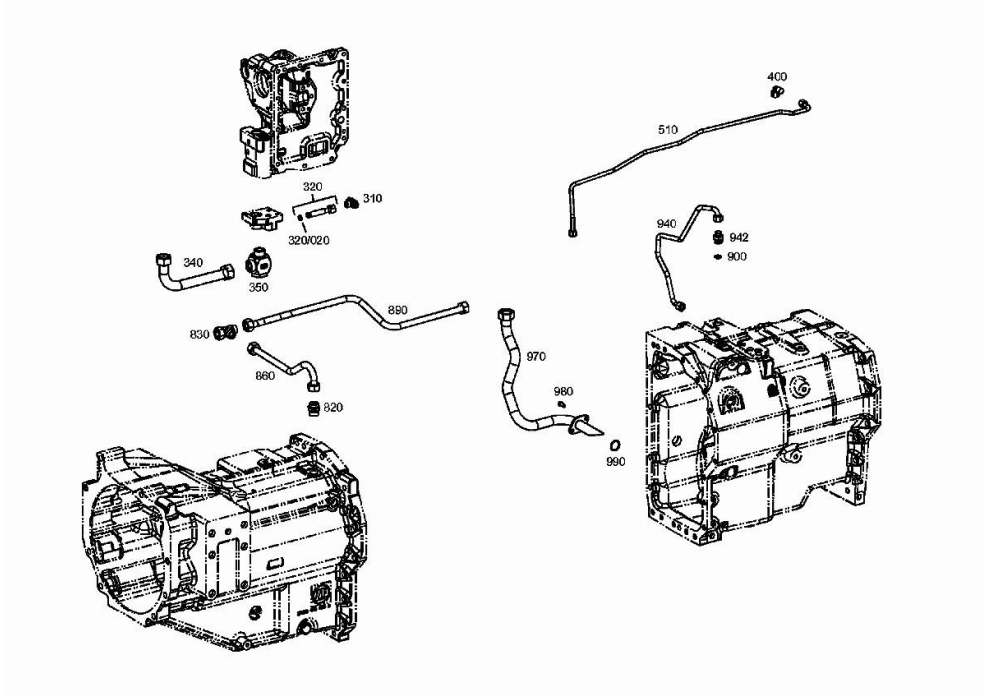
DRIVE FOR GEAR CHANGE BOX 2093 009 120

| Fig. | P/n | QTY | Name |
|----------|--------------|-----|---------------------------|
| 10 | 0.900.0952.1 | 1 | control |
| 10.10 | 0.900.0952.8 | 1 | solenoid valve DV |
| 10.10.10 | 0.900.1377.5 | 1 | gasket 12,4 x 1,78 |
| 10.10.20 | 0.900.1377.6 | 1 | gasket 13 x 1.5 |
| 10.10.30 | 0.900.1377.7 | 1 | gasket 14x1.78 |
| 10.10.40 | 0.900.1377.8 | 1 | screw m 8 x 16 |
| 40 | 0.900.0801.4 | 4 | ring 11,3 x 2,4 NBR-70-10 |
| 50 | 0.900.1363.3 | 1 | small block |
| 50.10 | 0.900.1384.6 | 1 | solenoid valve |
| 60 | 0.900.1363.4 | 2 | screw |



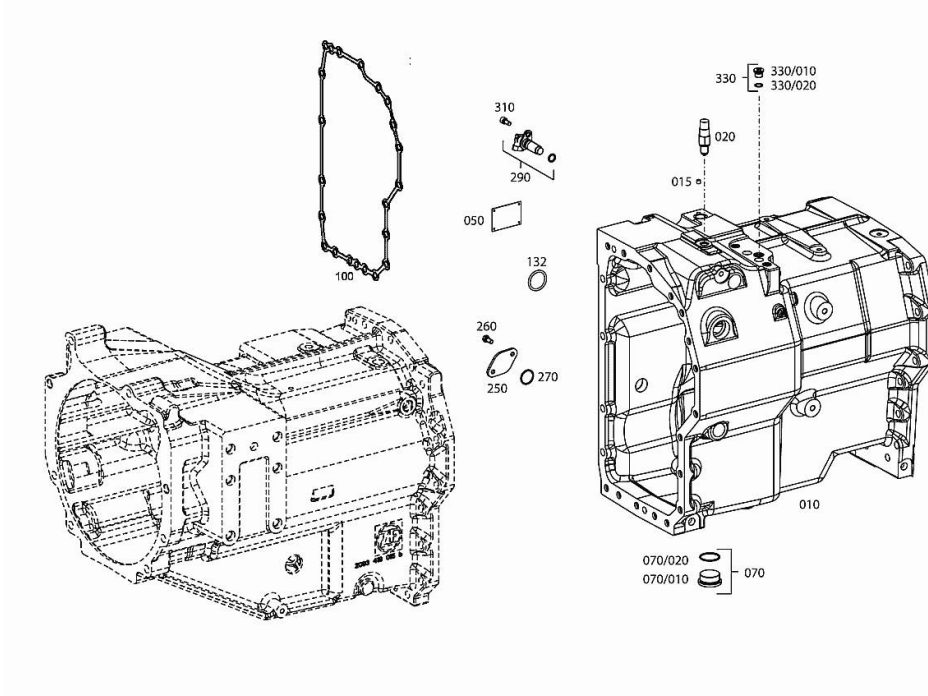
Section: D0 - TRANSMISSION
OIL SUPPLY 2093 009 120

| Fig. | P/n | QTY | Name |
|--------|--------------|-----|---------------------|
| 310 | 0.900.1362.6 | 1 | straight union |
| 320 | 0.010.2877.1 | 1 | tube |
| 320.20 | 04415958 | 1 | oil seal 10x2.5 |
| 340 | 0.010.3264.1 | 1 | pipng |
| 350 | 0.010.3842.1 | 1 | threaded joint |
| 400 | 0.010.2877.2 | 1 | pipe fitting EEL 10 |
| 510 | 0.010.3101.2 | 1 | tube |
| 820 | 0.010.2878.2 | 1 | pipe fitting |
| 830 | 0.010.2879.0 | 1 | pipe fitting |
| 860 | 0.010.2880.0 | 1 | tube |
| 890 | 0.900.0487.7 | 1 | tube |
| 900 | 04438451 | 1 | small mesh |
| 940 | 0.900.0954.2 | 1 | tube |
| 942 | 0.010.3805.0 | 1 | vent |
| 970 | 0.900.1462.2 | 1 | tube kpl. |
| 980 | 04434497 | 2 | screw m 8 x 18 |
| 990 | 0.010.3257.2 | 1 | gasket 28x2.5 |

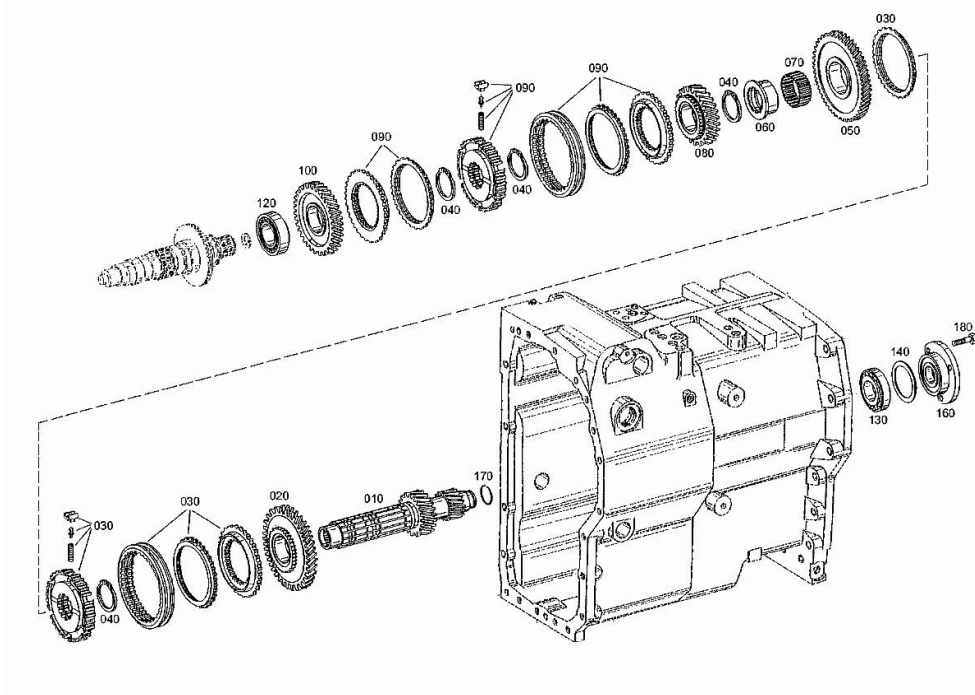


GEARBOX 2093 009 100

| Fig. | P/n | QTY | Name |
|--------|--------------|-----|-------------------------|
| 10 | 0.900.0487.9 | 1 | gear box (...) <- |
| 10 | 0.900.0954.7 | 1 | gear box -> (...) |
| 15 | 0.900.0952.5 | 1 | plug |
| 20 | 04416066 | 1 | switch |
| 50 | 04415260 | 1 | plate |
| 70 | 04435197 | 1 | plug |
| 70.10 | 04438472 | 1 | plug m 42 p.1.5 |
| 70.20 | 02315144 | 1 | oil seal 38x2.5 |
| 100 | 04415679 | 1 | gasket (...) <- |
| 132 | 0.010.2845.2 | 1 | oil seal 38x4 |
| 250 | 0.010.3257.1 | 1 | flange |
| 260 | 04434497 | 2 | screw m 8 x 18 |
| 270 | 0.010.3257.2 | 1 | gasket 28x2.5 |
| 290 | 04438450 | 1 | speed sensor L = 53,0mm |
| 290.10 | 04417747 | 1 | oil seal 15.54x2.62 |
| 310 | 0.010.2875.0 | 1 | screw m 8 x 18 |
| 330 | 04435199 | 1 | screw |
| 330.10 | 04436330 | 1 | screw m 16 p.1.5 |
| 330.20 | 02315162 | 1 | oil seal 13x2 |



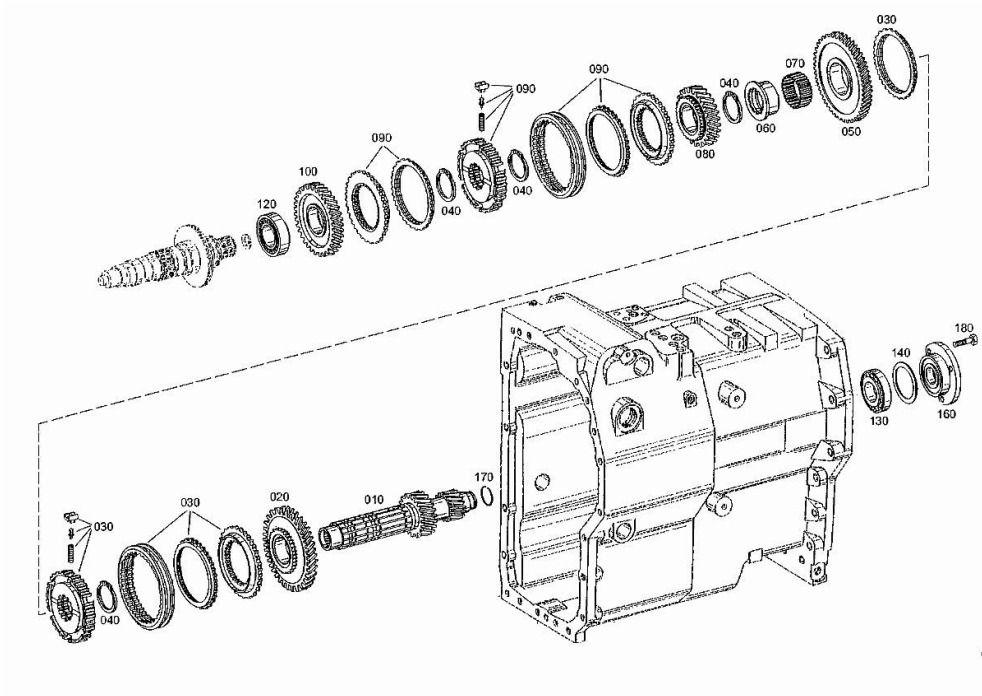
Section: D0 - TRANSMISSION
LAYSHAFT 2093 009 100



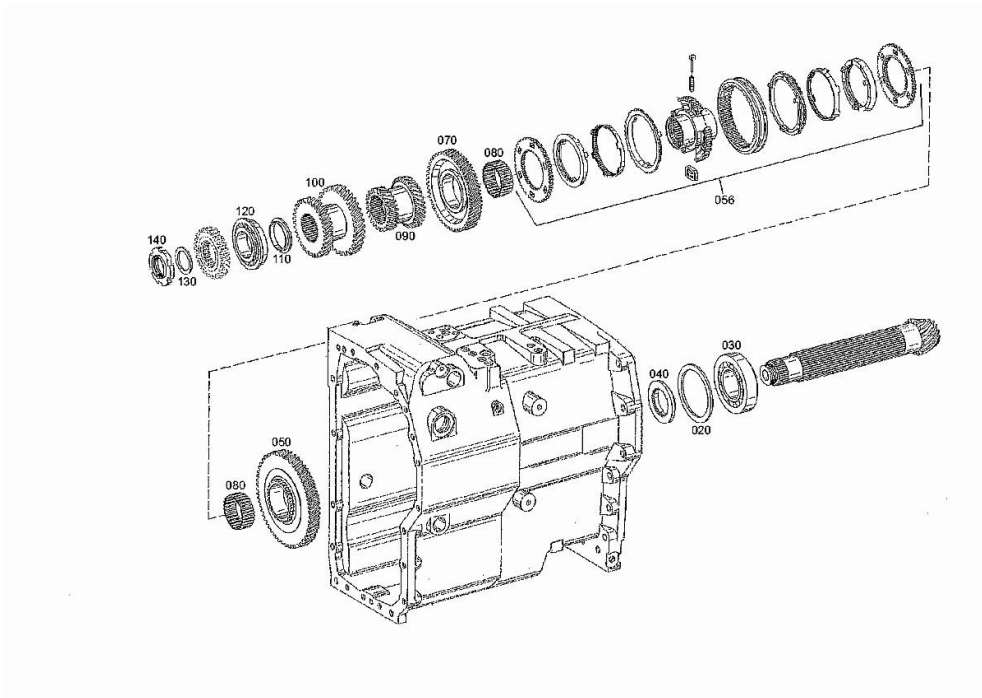
| Fig. | P/n | QTY | Name |
|------|--------------|-----|----------------------------|
| 10 | 04435202 | 1 | shaft |
| 20 | 0.900.1380.7 | 1 | gear Z = 47 -> (...) |
| 20 | 04427597 | 1 | wheel z=47 (...) <- |
| 30 | 0.900.0881.6 | 1 | lock synchronizer |
| 40 | 04415687 | 4 | circlip |
| 50 | 0.900.0954.8 | 1 | gear (...) <- |
| 50 | 0.900.1380.8 | 1 | gear Z = 58 -> (...) |
| 60 | 0.900.1379.6 | 1 | bush |
| 60 | 04417177 | 1 | bush L = 32.3 |
| 60 | 04417178 | 1 | bush L = 32.4 |
| 60 | 04417179 | 1 | bush L = 32.5 |
| 60 | 04417180 | 1 | bush L = 32.6 |
| 60 | 04417181 | 1 | bush L = 32.7 |
| 60 | 04417182 | 1 | bush L = 32.8 |
| 70 | 0.010.2849.1 | 1 | roller cage |
| 80 | 0.900.1380.6 | 1 | gear -> (...) |
| 80 | 04415690 | 1 | gear z = 30/3G (...) <- |
| 90 | 0.900.0881.7 | 1 | lock synchronizer |
| 100 | 0.900.0071.0 | 1 | gear |
| 120 | 0.010.3759.0 | 1 | roller bearing -> (...) |
| 120 | 04427599 | 1 | roller bearing (...) <- |
| 130 | 04416363 | 1 | roller bearing |
| 140 | 0.900.1378.1 | 1 | shim |
| 140 | 02965988 | 1 | shim mm 2.40 |
| 140 | 04334537 | 1 | shim mm 2.60 |
| 140 | 04334538 | 1 | shim mm 2.55 |
| 140 | 04334539 | 1 | shim mm 2.50 |
| 140 | 04334540 | 1 | shim mm 2.45 |
| 140 | 04334541 | 1 | shim mm 2.35 |
| 140 | 04334542 | 1 | shim mm 2.30 |
| 140 | 04334543 | 1 | shim mm 2.25 |
| 140 | 04334544 | 1 | shim mm 2.20 |
| 140 | 04334545 | 1 | shim mm 2.15 |
| 140 | 04334546 | 1 | shim mm 2.10 |
| 140 | 04334547 | 1 | shim mm 2.05 |
| 140 | 04334548 | 1 | shim mm 2.00 |

LAYSHAFT 2093 009 100

| Fig. | P/n | QTY | Name |
|------|--------------|-----|---------------|
| 140 | 04334549 | 1 | shim mm 1.95 |
| 140 | 04334550 | 1 | shim mm 1.90 |
| 140 | 04334551 | 1 | shim mm 1.85 |
| 140 | 04334552 | 1 | shim mm 1.80 |
| 140 | 04334553 | 1 | shim mm 1.75 |
| 140 | 04334554 | 1 | shim mm 1.70 |
| 140 | 04433184 | 1 | shim mm 1.65 |
| 140 | 04433185 | 1 | shim mm 1.60 |
| 140 | 04436332 | 1 | shim mm 1.725 |
| 140 | 04436333 | 1 | shim mm 1.775 |
| 140 | 04436334 | 1 | shim mm 1.875 |
| 140 | 04436335 | 1 | shim mm 1.925 |
| 140 | 04436336 | 1 | shim mm 1.975 |
| 160 | 04415760 | 1 | cover |
| 170 | 04415761 | 1 | ring 35x2 |
| 180 | 0.010.2616.1 | 3 | screw m 10x32 |



Section: D0 - TRANSMISSION
MAIN SHAFT 2093 009 100



| Fig. | P/n | QTY | Name |
|------|--------------|-----|-------------------------|
| 20 | 0.010.2849.2 | 1 | shim s = 3.75 |
| 20 | 0.010.2850.0 | 1 | shim s = 3.70 |
| 20 | 0.010.2850.1 | 1 | shim s = 3.65 |
| 20 | 0.010.2850.2 | 1 | shim s = 3.60 |
| 20 | 0.010.2851.0 | 1 | shim s = 3.55 |
| 20 | 0.010.2851.1 | 1 | shim s = 3.50 |
| 20 | 0.010.2851.2 | 1 | shim s = 3.45 |
| 20 | 0.010.2852.0 | 1 | shim s = 3.40 |
| 20 | 0.010.2852.1 | 1 | shim s = 3.76 |
| 20 | 0.010.2852.2 | 1 | shim s = 3.77 |
| 20 | 0.010.2853.0 | 1 | shim s = 3.78 |
| 20 | 0.010.2853.1 | 1 | shim s = 3.79 |
| 20 | 0.010.2853.2 | 1 | shim s = 3.81 |
| 20 | 0.010.2854.0 | 1 | shim s = 3.82 |
| 20 | 0.010.2854.1 | 1 | shim s = 3.83 |
| 20 | 0.010.2854.2 | 1 | shim s = 3.84 |
| 20 | 0.010.2855.0 | 1 | shim S = 3.86 |
| 20 | 0.010.2855.1 | 1 | shim s = 3.87 |
| 20 | 0.010.2855.2 | 1 | shim s = 3.88 |
| 20 | 0.010.2856.0 | 1 | shim s = 3.89 |
| 20 | 0.010.2856.1 | 1 | shim s = 3.91 |
| 20 | 0.010.2856.2 | 1 | shim s = 3.92 |
| 20 | 0.010.2857.0 | 1 | shim s = 3.93 |
| 20 | 0.010.2857.1 | 1 | shim s = 3.94 |
| 20 | 0.900.1378.6 | 1 | shim |
| 20 | 04417170 | 1 | shim s = 3.95 |
| 20 | 04417171 | 1 | shim s = 3.9 |
| 20 | 04417172 | 1 | shim s = 3.85 |
| 20 | 04417173 | 1 | shim s = 3.8 |
| 20 | 04417174 | 1 | shim s = 4.0 |
| 20 | 04417175 | 1 | shim s = 4.05 |
| 20 | 04417176 | 1 | shim s = 4.10 |
| 30 | 04416073 | 1 | roller bearing |
| 40 | 04416074 | 1 | shim |
| 50 | 0.900.1381.1 | 1 | gear Z = 75 -> (...) |
| 50 | 04423721 | 1 | gear V2=Y (...) <- |
| 56 | 0.010.3840.2 | 1 | lock synchronizer |
| 70 | 0.900.1380.9 | 1 | gear z = 57 -> (...) |
| 70 | 04427568 | 1 | gear V2=Y (...) <- |
| 80 | 04427570 | 2 | roller cage |

Thank you so much for reading.
Please click the “Buy Now!”
button below to download the
complete manual.



After you pay.

You can download the most
perfect and complete manual in
the world immediately.

Our support email:

ebooklibonline@outlook.com