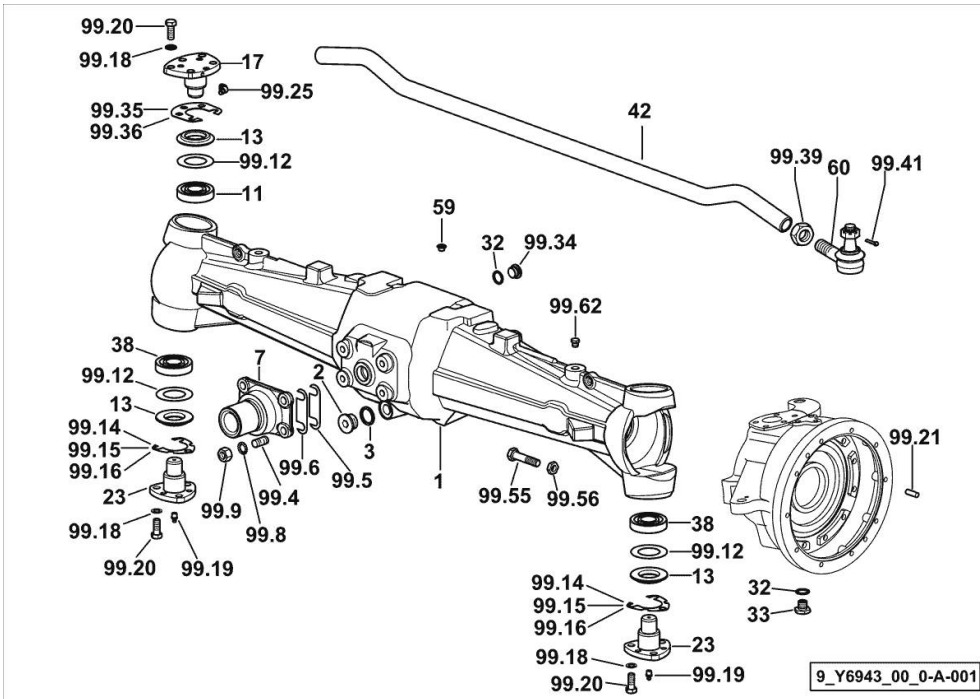


4WD - FRONT DRIVE AXLE

Fig.	P/n	QTY	Name
------	-----	-----	------

Notes:

[XM 100 T4i V-DRIVE]



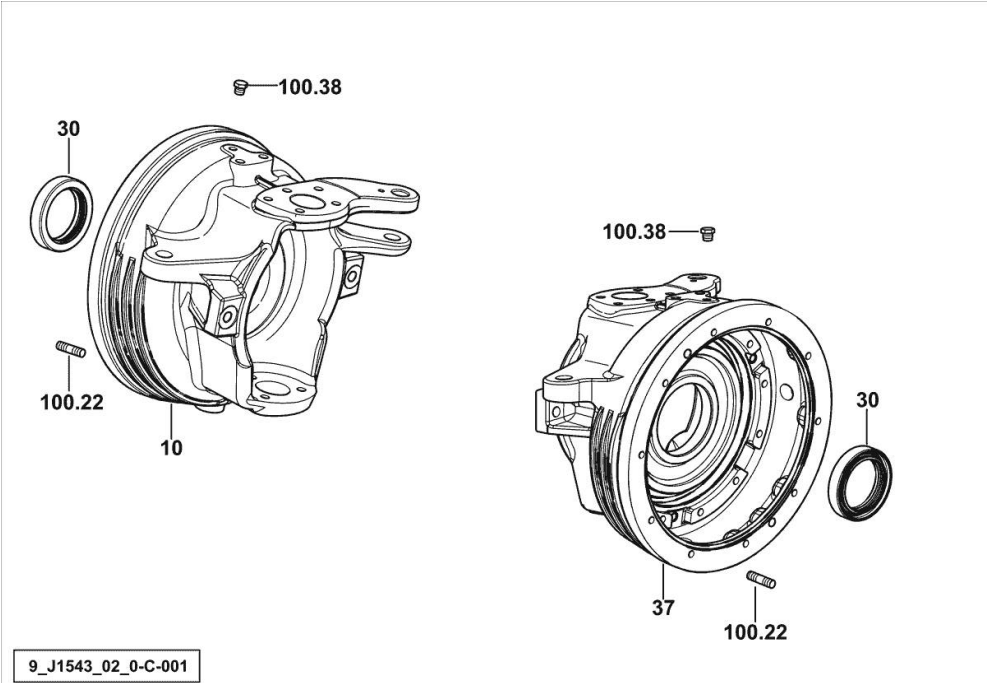
1	0.010.6083.0/60	1	front axle
2	2.3199.021.2	1	plug 1/2 gas
3	2.1560.054.0	1	gasket 21 x 26
7	0.019.8850.0	1	pin
11	2.2530.007.0	1	roller bearing iso 30 kb 03
13	2.1519.045.0	4	special oil seal 41x73x9
17	0.255.4335.0/10	1	pin
23	0.169.4337.0/10	2	pin
32	2.1560.054.0	5	gasket 21 x 26
33	2.3199.021.2	2	plug 1/2 gas
38	2.2550.007.0	2	roller bearing 30x72x28.75
42	0.010.5537.0/10	1	rod
59	2.3199.386.0	5	plug Ø 11
60	0.010.0488.4/10	2	joint
			☞ 0.010.0488.4/10
99.4	2.0433.309.7	4	stud bolt m 14 p.1.5x35
99.5	2.1379.004.0/10	4	small plate 15x15x62x1.5
99.6	2.1379.003.0/10	4	small plate 15x15x62x0.12
99.8	2.1475.005.2	4	washer 14
99.9	2.1011.308.2	4	nut m 14 p.1.5
99.12	2.1599.260.0	4	shoulder ring 43x71x1
99.14	0.463.4351.0	8	shim mm 0.50
99.15	0.463.4350.0	8	shim mm 0.20
99.16	0.463.4352.0	8	shim mm 0.15
99.18	2.1470.007.2	9	lock washer 12
99.19	2.3820.105.2	2	grease gun m 10 p.1 x 7
99.20	2.0112.411.2	9	screw m 12 p.1.75 x 30
99.21	2.1651.811.0	4	cylindrical plug 10x24
99.25	2.3821.102.2	1	grease gun m 8 p.1 x 8
99.34	2.3199.001.2	3	plug 1/2" gas
99.35	2.1589.124.0	8	shoulder ring mm 0.20
99.36	2.1589.126.0	8	shoulder ring mm 0.15
99.39	2.1099.020.1	2	special nut m 24 p.1.5
99.41	2.1690.412.2	2	split pin 4 x 30
99.55	2.0119.213.2	2	screw m 14 p.2 x 60
99.56	2.1011.208.2	2	nut m 14 p.2
99.62	2.3199.125.0	1	plug 1/8" gas

**4WD - FRONT AXLE FORKS FOR TYPES WITH BRAKES**

Fig.	P/n	QTY	Name
------	-----	-----	------

Notes:  
 [XM 100 T4i V-DRIVE]

10	0.016.3302.0/10	1	fork dx/rh/re
30	2.1529.134.0	2	special oil seal 65x90x17.5
37	0.016.3301.0/10	1	fork sx/lh/li
100.22	2.0433.155.7	20	stud bolt m 10 p.1.25 x 25
100.38	2.3199.125.0	2	plug 1/8" gas



9\_J1543\_02\_0-C-001

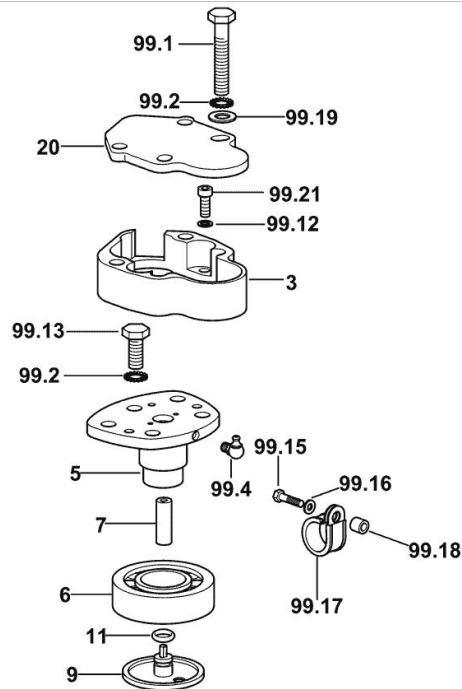
**STEERING SENSOR SUPPORT SBA/ASM**

Fig.	P/n	QTY	Name
------	-----	-----	------

**Notes:**

[XM 100 T4i V-DRIVE]

3	0.010.4627.0/10	1	guard
5	0.011.2308.0/10	1	pin
6	2.2520.008.0	1	roller bearing 35x72x18,25
7	0.010.0008.2	1	joint
9	0.011.2252.0	1	cap-washer
11	2.1530.024.0	1	oil seal 10.78 x 2.62
20	0.010.4355.0/10	1	cover
99.1	2.0112.423.2	4	screw m 12 p.1.75 x 70
99.2	2.1470.007.2	5	lock washer 12
99.4	2.3821.102.2	1	grease gun m 8 p.1 x 8
99.12	2.1470.004.2	2	lock washer 8
99.13	2.0112.411.2	1	screw m 12 p.1.75 x 30
99.15	2.0112.009.2	1	screw m 6 p.1 x 25
99.16	2.1470.002.2	1	lock washer 6
99.17	2.6839.066.0/10	1	clamp 16
99.18	2.1549.341.2	1	spacer 6.5x11x11
99.19	2.1310.007.2	2	flat washer 13 x 24
99.21	2.0312.206.2	2	screw m 8 p 1.25 x 20



9\_77843\_01\_0-A-001

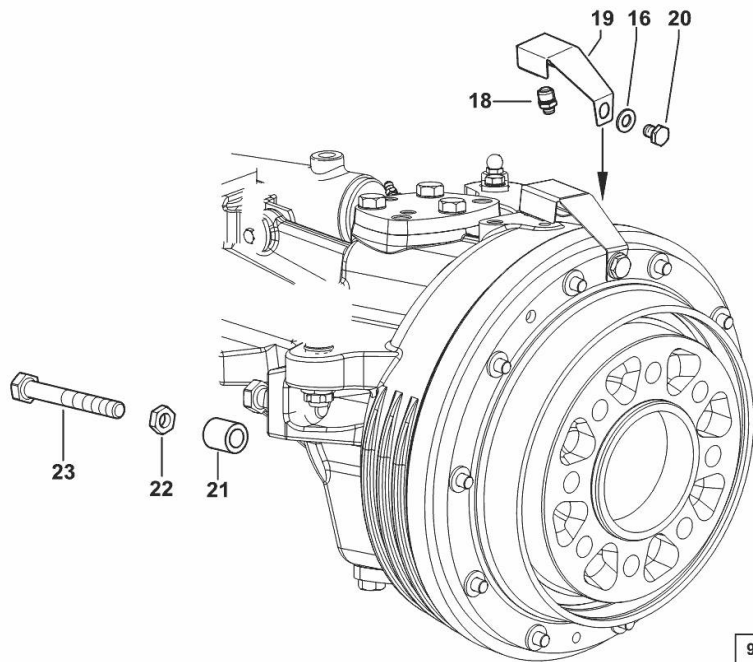
**AIR BREATHER AND STEERING STOP - 4WD**

Fig.	P/n	QTY	Name
------	-----	-----	------

**Notes:**

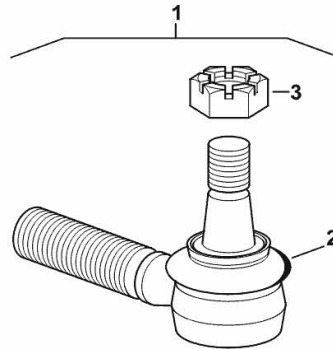
[XM 100 T4i V-DRIVE]

16	2.1310.006.2	4	flat washer 10.5x21
18	0.135.4363.3/10	3	valve
19	0.270.4355.0	2	guard
20	2.0112.304.2	2	screw m 10 p.1.5x14
21	2.1549.636.2	2	spacer 15x25x25
22	2.1011.208.2	2	nut m 14 p.2
23	2.0119.324.2	2	screw m14x100



**STEERING ROD - MECH. STEERING - TELESCOPIC AXLE**

Fig.	P/n	QTY	Name
1	0.010.0488.4/10	1	joint
2	0.900.0025.7	1	guard
3	0.900.0025.8	1	nut



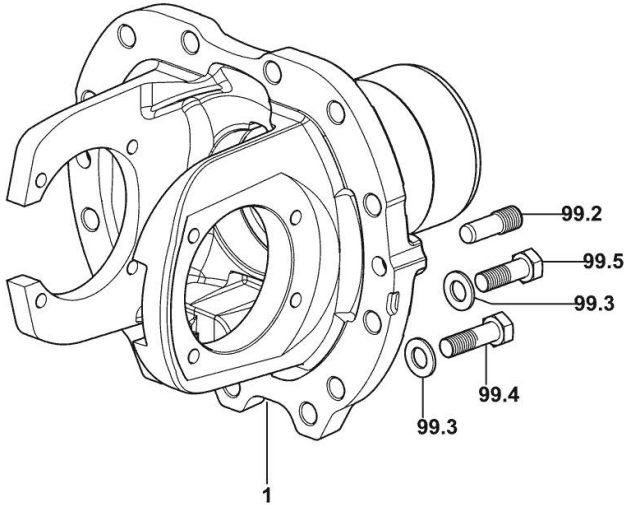
0\_010\_0488\_4\_10

Section: F0 - FRONT AXLE  
4WD - FLANGE

Fig.	P/n	QTY	Name
------	-----	-----	------

Notes:  
[XM 100 T4i V-DRIVE]

1	0.019.8831.0/10	1	flange
99.2	2.1699.434.0	2	pin m 14 p.1.5 x 16
99.3	2.1475.004.2	13	spring washer 12
99.4	2.0113.415.2	9	screw m 12 p.1.75 x 40
99.5	2.0113.413.2	4	screw m 12 p.1.75x35



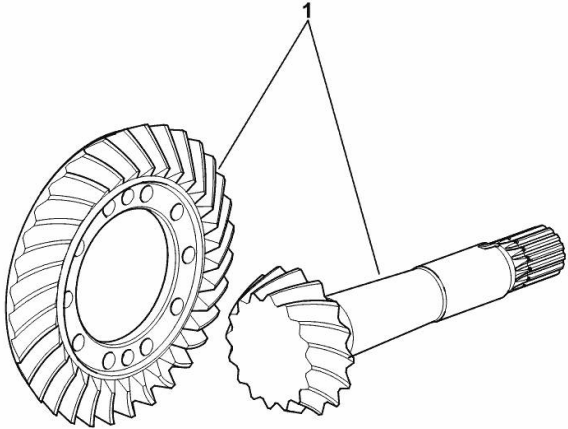
9\_Y7743\_01\_0-A-001

**4WD - BEVEL WHEEL GEAR z=19 z=43**

Fig.	P/n	QTY	Name
------	-----	-----	------

Notes:  
[XM 100 T4i V-DRIVE]

1	0.019.0456.3/10	1	bevel drive z=19 z=43
---	-----------------	---	-----------------------



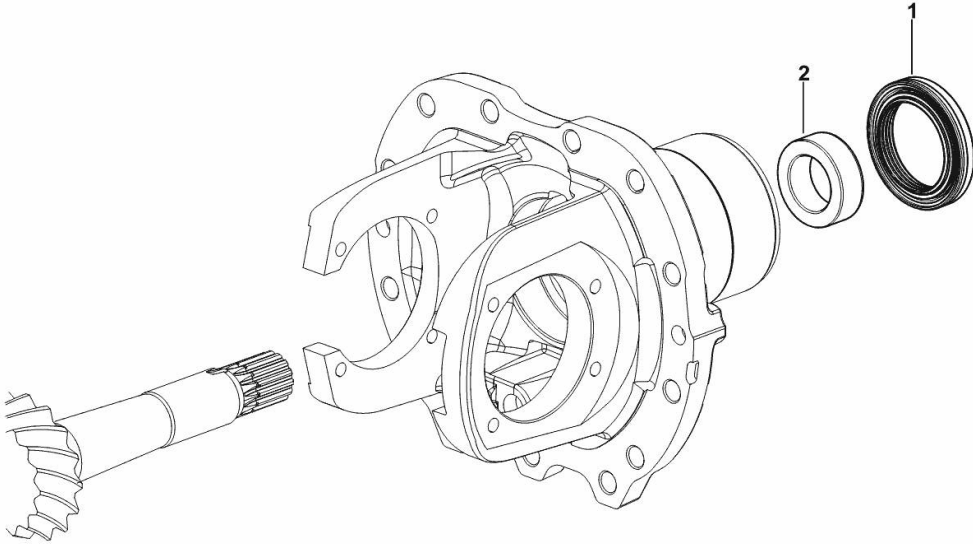
9\_Y8946\_01\_0-A-001

**4WD - FRONT DIFFERENTIAL LOCK- STANDARD SEALING**

Fig.	P/n	QTY	Name
------	-----	-----	------

Notes:  
[XM 100 T4i V-DRIVE]

1	2.1529.149.0	1	special oil seal 55 x 80 x 12.5
2	2.1549.459.0	1	spacer 35x55x19



9\_Y6946\_01\_0-B-001



**4WD - FRONT DIFFERENTIAL**

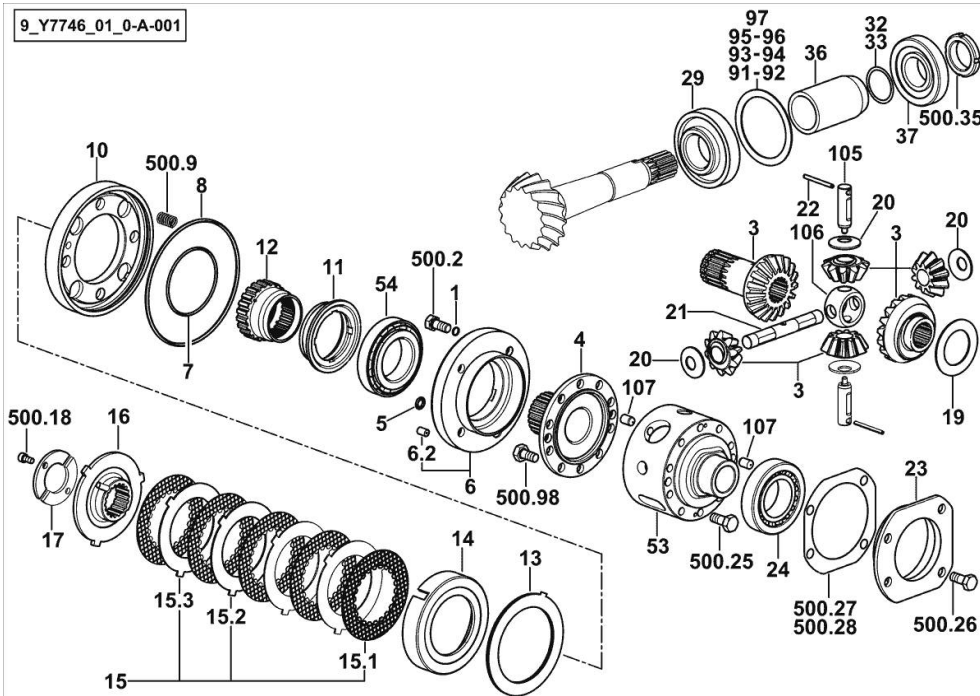


Fig.	P/n	QTY	Name
------	-----	-----	------

**Notes:**

[XM 100 T4i V-DRIVE]

1	2.1532.014.0	4	oil seal 7.65 x 1.78
3	0.013.6073.3/20	1	planet gear
4	0.009.7642.0/50	1	flange
5	2.1530.018.0	1	oil seal 9.19 x 2.62
6	0.009.7633.3/10	1	flange
6.2	2.1699.250.0/20	1	pin 8 x 12
7	2.1539.171.0	1	special oil seal 75.87 x 2.62
8	2.1532.246.0	1	oil seal 142.47x3.53
10	0.009.7630.0/40	1	piston
11	0.009.7635.0/40	1	ring nut m72x1.5x85x21
12	0.009.7632.0/30	1	hub
13	2.2999.335.0/10	1	special bearing 90x5
14	0.009.7637.0/10	1	box
15	0.010.4526.3	1	hydraulic PTO clutch kpl.
15.1	0.010.4525.2	5	clutch plate
15.2	0.007.7102.0	3	disc mm 1.5
15.3	0.007.7103.0	1	disc mm 1.7
16	0.009.7631.0/10	1	hub
17	0.009.7634.0/10	2	slewing ring
19	2.1599.431.0	1	shoulder ring 42x66x2
20	0.255.4629.0	4	shoulder ring 15.5x36x2
21	0.013.6067.0	1	pin
22	2.1631.418.0	2	pin 5 x 45
23	0.255.4652.0/20	1	flange
24	2.2540.005.0	1	roller bearing 45 x 85 x 24.75
29	2.2560.006.0	1	roller bearing 40 x 90 x 25.25
32	2.1580.101.0	2	shim 36 x 43 x 0.2
33	2.1580.102.0	3	shim 36 x 43 x 0.5
36	0.019.0472.0	1	spacer
37	2.2560.005.0	1	roller bearing 35 x 80 x 22.75
53	0.013.6062.0/40	1	differential carrier
54	2.2999.315.0	1	special bearing
91	2.1589.356.0	1	shoulder ring 73x89.5x0.6
92	2.1589.357.0	1	shoulder ring 73x89.5x0.7
93	2.1589.358.0	1	shoulder ring 73x89.5x0.8
94	2.1589.359.0	1	shoulder ring 73x89.5x0.9
95	2.1589.360.0	1	shoulder ring 73x89.5x1.65
96	2.1589.361.0	1	shoulder ring 73x89.5x1.75
97	2.1589.362.0	1	shoulder ring 73x89.5x1.85
105	0.013.6068.0	2	pin
106	0.013.6070.0	1	ring

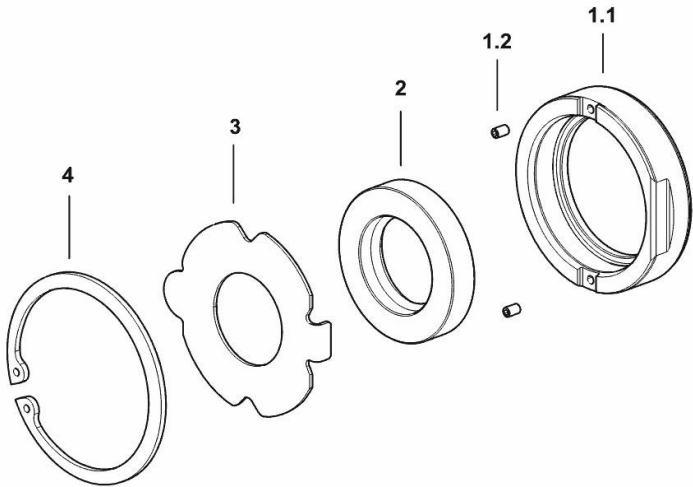


**4WD - TRANSMISSION SHAFT - WITH STANDARD SEALS**

Fig.	P/n	QTY	Name
------	-----	-----	------

Notes:  
[XM 100 T4i V-DRIVE]

1.1	0.018.8525.0	1	bushing
1.2	2.0599.076.1	2	screw
2	2.1520.217.0	1	oil seal 35x62x12
3	0.018.8603.0	1	stop
4	2.1411.032.7	1	circlip Ø mm 80



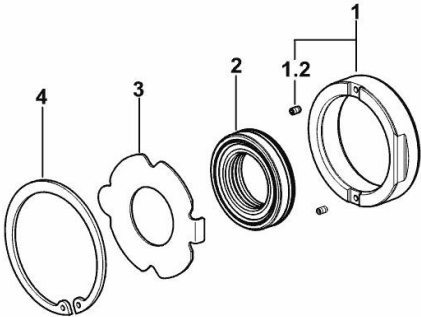
9\_Y8926\_01\_0-A-001

**4WD - TRANSMISSION SHAFT - WITH WATERPROOF SEALS**

Fig.	P/n	QTY	Name
------	-----	-----	------

Notes:  
[XM 100 T4i V-DRIVE]

1	0.018.7203.3	1	bushing
1.2	2.0599.076.1	2	screw
2	2.1529.181.0	1	oil seal 35x60x13
3	0.018.8603.0	1	stop
4	2.1411.032.7	1	circlip Ø mm 80



9\_Y8926\_02\_0-A-002

**4WD - PROPELLER SHAFT**

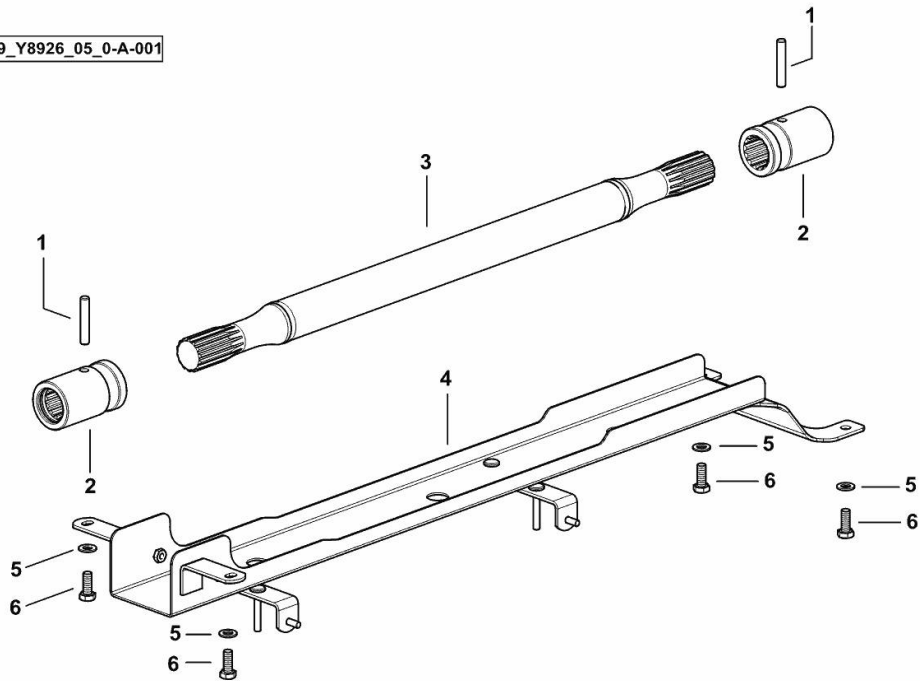
Fig.	P/n	QTY	Name
------	-----	-----	------

**Notes:**

- FOR TYPES WITHOUT SUSPENDED AXLE [XM 100 T4i V-DRIVE]

1	2.1631.718.0	2	roll pin 8 x 45
2	0.018.7956.0/10	2	sleeve
3	0.019.0711.2	1	shaft
4	0.019.1420.3	1	guard
5	2.1310.004.2	4	flat washer 8.4x17
6	2.0112.207.2	4	screw m 8 p 1.25 x 20

9\_Y8926\_05\_0-A-001



**4WD - PROPELLER SHAFT**

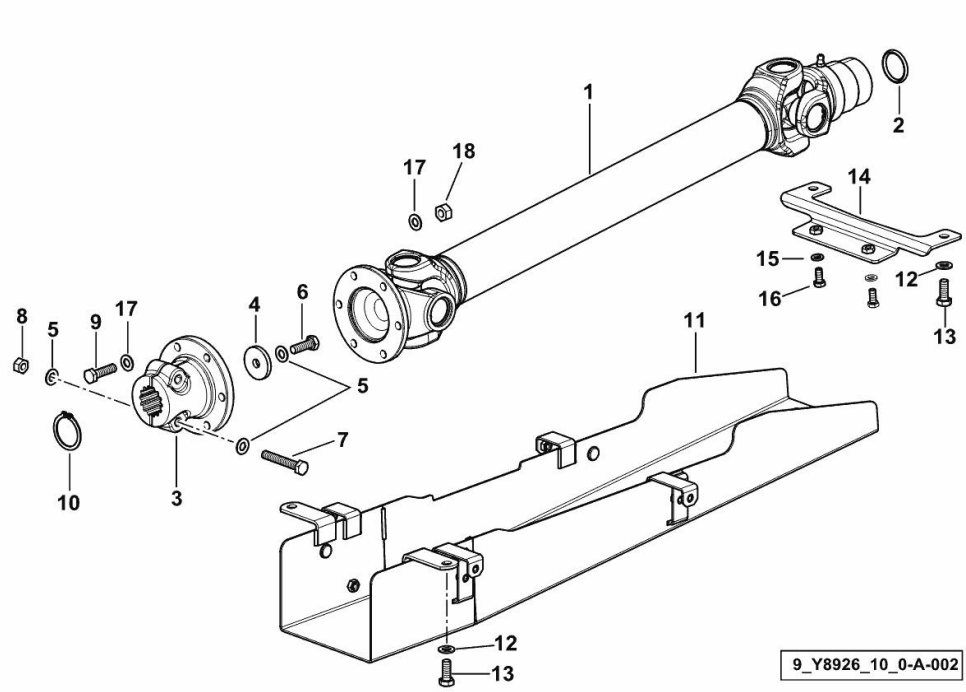


Fig.	P/n	QTY	Name
------	-----	-----	------

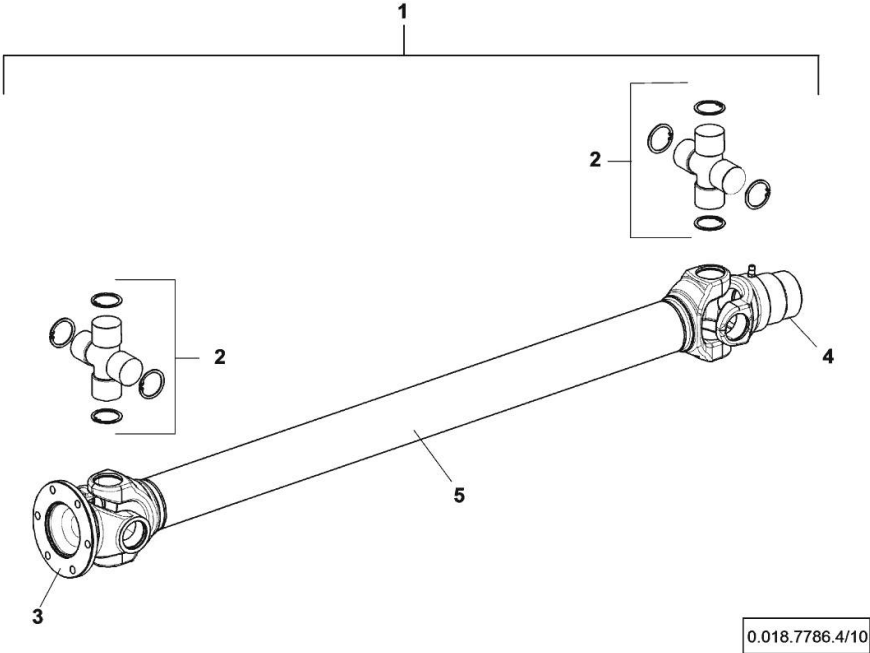
**Notes:**

- FOR TYPES WITH SUSPENDED DRIVING AXLE [XM 100 T4i V-DRIVE]

1	0.018.7786.4/10	1	transmission shaft ☞ 0.018.7786.4/10 ☞ 0.018.7786.4/10
2	2.1530.070.0	1	oil seal
3	0.018.9597.0/10	1	flange
4	2.1549.761.2	1	spacer
5	2.1475.002.7	5	washer 8.4
6	2.0113.209.2	1	screw m 8 p.1.25 x 25
7	2.0113.219.2	2	screw m 8 p.1.25 x 50
8	2.1012.105.7	2	nut m 8 p.1.25
9	2.0123.211.2	6	screw m8x30
10	2.1410.013.2	1	circlip 32
11	0.019.1433.3/20	1	guard
12	2.1310.004.2	4	flat washer 8.4x17
13	2.0112.207.2	4	screw m 8 p 1.25 x 20
14	0.019.1434.3	1	bracket
15	2.1310.002.2	2	flat washer 6.4x12.5
16	2.0112.004.2	2	screw m 6 p.1 x 14
17	2.1475.102.7	12	washer 8
18	2.1121.105.2	6	nut m 8 x 1

**CARDAN JOINT GEWES GELENKWELLENWERK**

Fig.	P/n	QTY	Name
1	0.018.7786.4/10	1	transmission shaft
2	0.900.1996.2	2	universal joint - KIT
3	0.900.1996.3	1	flange
4	0.900.1996.4	1	fork - KIT
5	0.000.0000.1		cannot be supplied



Thank you so much for reading.  
Please click the “Buy Now!”  
button below to download the  
complete manual.



After you pay.

You can download the most  
perfect and complete manual in  
the world immediately.

Our support email:

[ebooklibonline@outlook.com](mailto:ebooklibonline@outlook.com)