

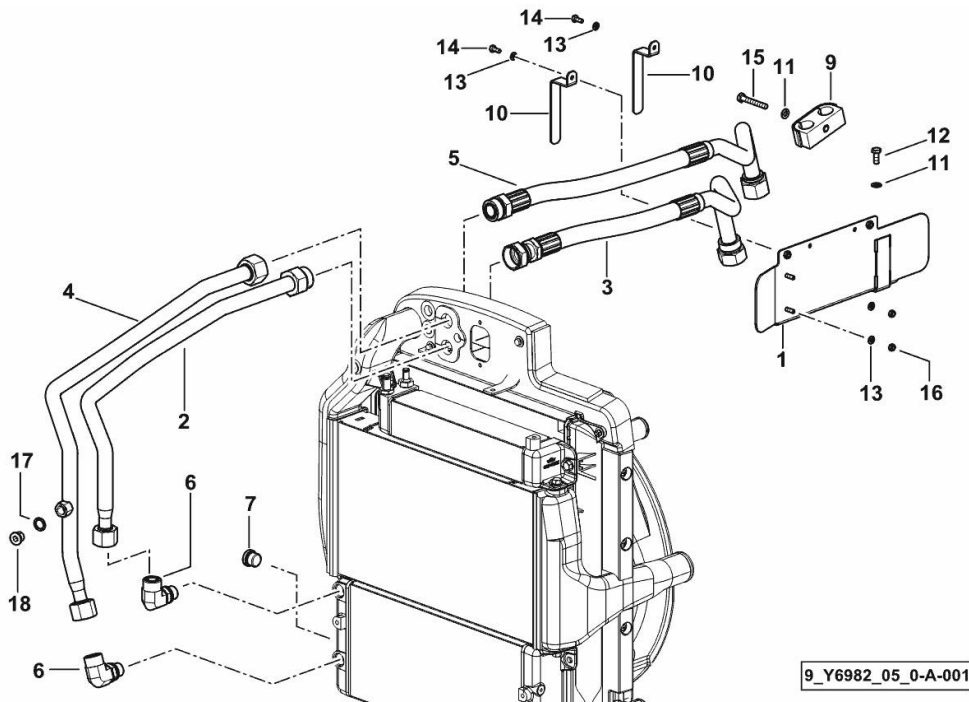
**OIL COOLER PIPE**

Fig.	P/n	QTY	Name
------	-----	-----	------

**Notes:**

[XM 120 T4i V-DRIVE]

1	0.019.1193.3	1	channel
2	0.019.1449.3	1	tube - INPUT
3	0.019.1195.3	1	flexible hose - INPUT
4	0.019.1450.3	1	tube - OUTPUT
5	0.019.1196.3	1	flexible hose - OUTPUT
6	2.3273.213.0	2	pipe fitting
7	2.3121.008.2	1	plug
9	2.3329.004.0	1	terminal
10	0.019.1197.0	2	bracket
11	2.1310.004.2	2	flat washer 8.4x17
12	2.0112.207.2	1	screw m 8 p 1.25 x 20
13	2.1310.002.2	4	flat washer 6.4x12.5
14	2.0112.004.2	2	screw m 6 p.1 x 14
15	2.0112.220.2	1	screw m 8 p.1.25x55
16	2.1011.103.2	2	nut m 6 p.1
17	2.1560.012.0	1	gasket 16.2 x 22
18	2.3120.010.4	1	plug m 16 p.1.5



9\_Y6982\_05\_0-A-001

**GEARBOX OIL HEAT EXCHANGER SYSTEM**

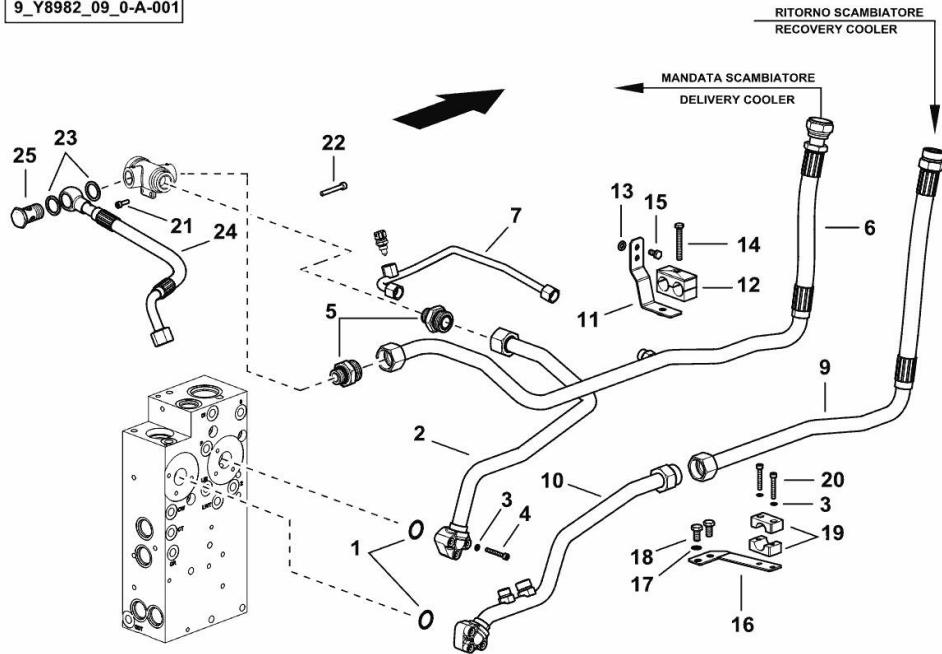
Fig.	P/n	QTY	Name
------	-----	-----	------

**Notes:**

[XM 120 T4i V-DRIVE]

1	2.1532.075.0	2	ring
2	0.019.7564.3	1	tube
3	2.1480.012.2	12	washer 6, d128
4	2.0312.115.2	6	screw m 6 p.1x45
5	2.3249.663.2	2	pipe fitting
6	0.019.7567.3	1	tube
7	0.019.7561.3	1	tube
9	0.019.7566.3	1	tube
10	0.019.7562.3	1	tube
11	0.019.7560.3	1	bracket
12	2.3329.006.0	1	terminal
13	2.1310.004.2	3	flat washer 8.4x17
14	2.0112.221.2	1	screw m 8 p.1.25 x 60
15	2.0112.205.2	2	screw m 8 p.1.25 x 16
16	0.019.7539.3	1	bracket
17	2.1310.006.2	2	flat washer 10.5x21
18	2.0112.307.2	2	screw m 10 p.1.5 x 20
19	04454620	2	small block
20	2.0312.114.2	2	screw m 6 p.1x40
21	2.0312.106.2	2	screw m 6 p.1 x 20
22	2.1011.103.2	2	nut m 6 p.1
23	2.1569.068.0	2	gasket 26.3x34
24	0.019.7568.3	1	tube
25	2.3335.010.2	1	pipe union m 26x1.5

9\_Y8982\_09\_0-A-001

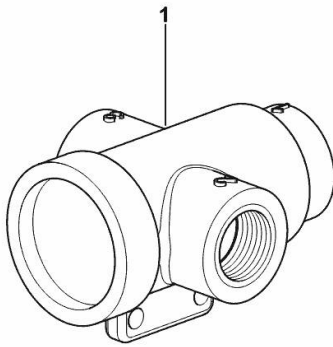


**RADIATOR BY-PASS VALVE**

Fig.	P/n	QTY	Name
------	-----	-----	------

Notes:  
[XM 120 T4i V-DRIVE]

1	2.3729.014.0	1	valve
---	--------------	---	-------



9\_V7182\_05\_0-A-001

**XM 120 T4i V-DRIVE**

Section: H0 - HYDRAULIC AND PNEUMATIC SYSTEM]

Ref: H0.01.3 (1)

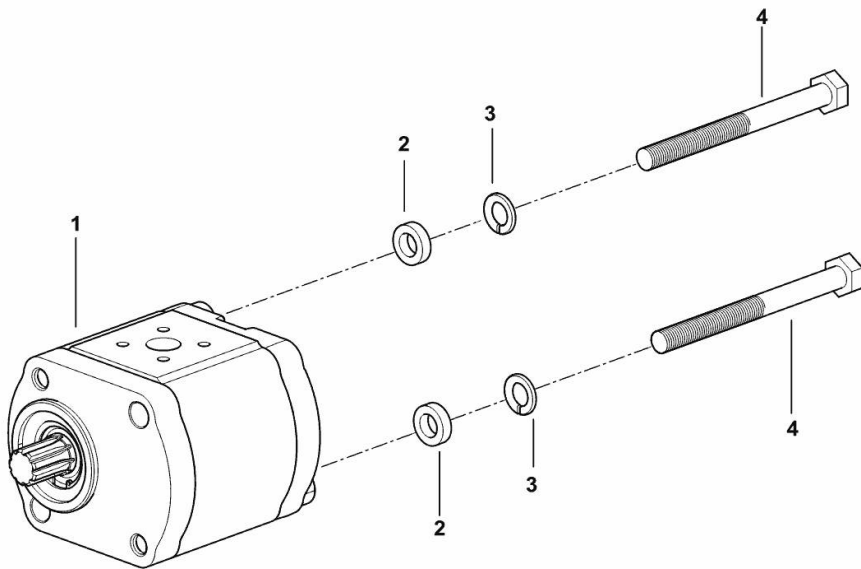
**HYDRAULIC PUMP 14 cc dx/rh/re**

Fig.	P/n	QTY	Name
------	-----	-----	------

**Notes:**

[XM 120 T4i V-DRIVE]

1	2.4539.480.0/10	1	hydraulic pump 14 cc dx/rh/re - BOSCH ☞ 2.4539.480.0/10
2	2.1549.321.0	2	spacer 10.5X18X5
3	2.1474.010.2	2	washer 10
4	2.0112.331.2	2	screw m 10 p.1.5x110



9\_R8982\_01\_0-A-001

**XM 120 T4i V-DRIVE**

Section: H0 - HYDRAULIC AND PNEUMATIC SYSTEM]

Ref: H0.01.4 (1)

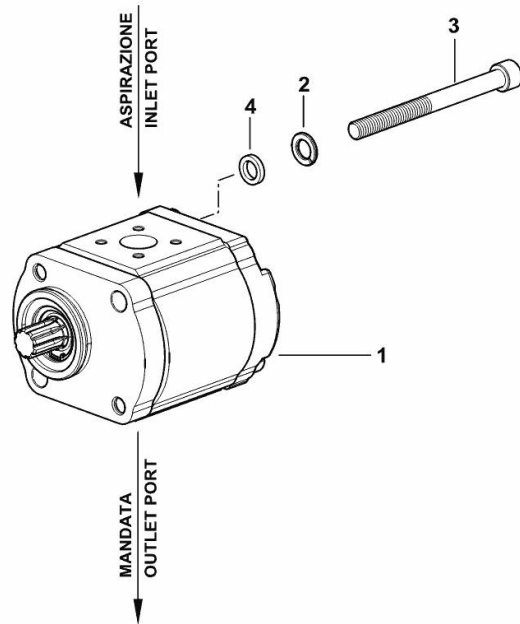
**QUIET-RUNNING HYDRAULIC PUMP 16 cm<sup>3</sup>, sx/lh/li**

Fig.	P/n	QTY	Name
------	-----	-----	------

**Notes:**

[XM 120 T4i V-DRIVE]

1	2.4539.015.0	1	hydraulic pump 16 cm <sup>3</sup> , sx/lh/li
2	2.1474.010.2	2	washer 10
3	2.0169.017.2	2	screw m 10 p.1.5x115
4	2.1579.154.2	2	spacer 10.5x16x3



9\_Y8982\_01\_0-A-001

**XM 120 T4i V-DRIVE**

Section: H0 - HYDRAULIC AND PNEUMATIC SYSTEM|

Ref: H0.01.5 (1)

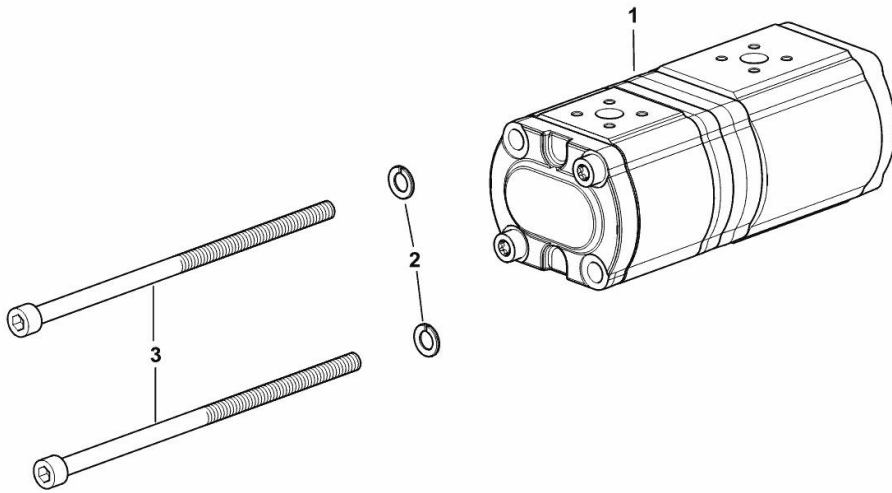
**HYDRAULIC PUMP 22.5 + 11 cc sx/lh/li**

Fig.	P/n	QTY	Name
------	-----	-----	------

**Notes:**

[XM 120 T4i V-DRIVE]

1	2.4539.006.0	1	oil pump 22.5 + 11 cc sx/lh/li - BOSCH ☞ 2.4539.006.0
2	2.1474.010.2	2	washer 10
3	04454597/10	2	screw



9\_Y8982\_02\_0-A-001

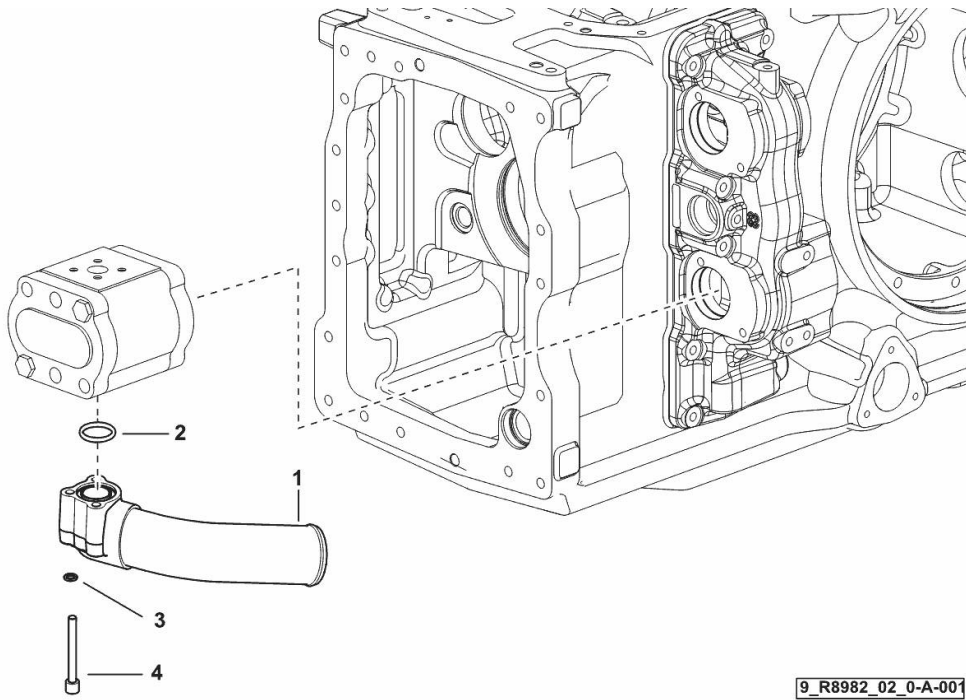
**PUMP FILTER SUCTION**

Fig.	P/n	QTY	Name
------	-----	-----	------

**Notes:**

[XM 120 T4i V-DRIVE]

1	0.016.7175.3	1	tube
2	2.1531.058.0	1	oil seal 22.22x2.62
3	2.1480.012.2	3	washer 6, d128
4	2.0312.114.2	3	screw m 6 p.1x40



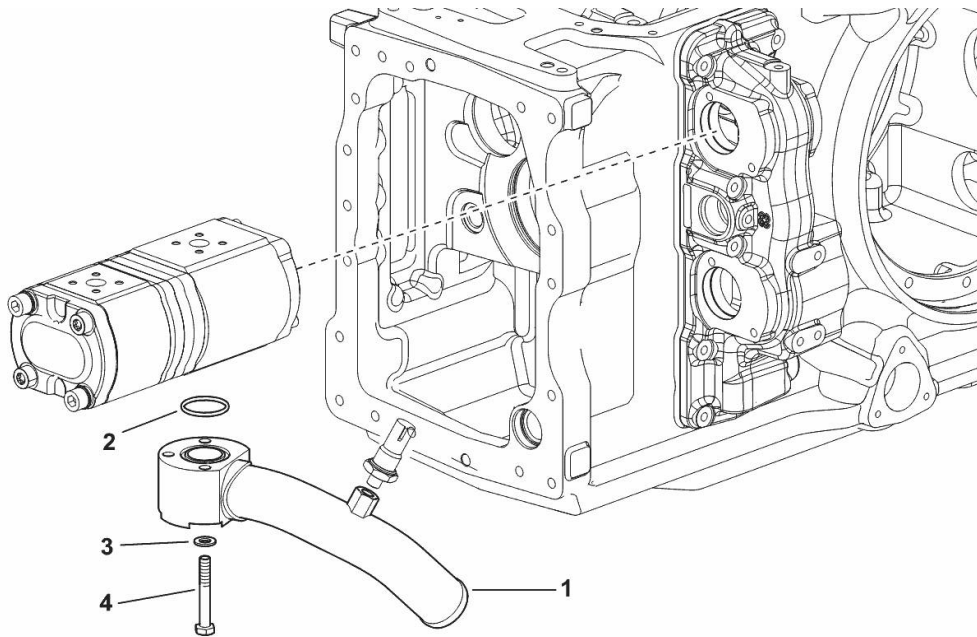
**PUMP FILTER SUCTION**

Fig.	P/n	QTY	Name
------	-----	-----	------

**Notes:**

[XM 120 T4i V-DRIVE]

1	0.017.4823.3	1	tube
2	2.1531.079.0	1	oil seal 29.82 x 2.62
3	2.1310.004.2	3	flat washer 8.4x17
4	2.0112.220.2	3	screw m 8 p.1.25x55



9\_R9282\_04\_0-A-001



**XM 120 T4i V-DRIVE**

Section: H0 - HYDRAULIC AND PNEUMATIC SYSTEM]

Ref: H0.01.8 (1)

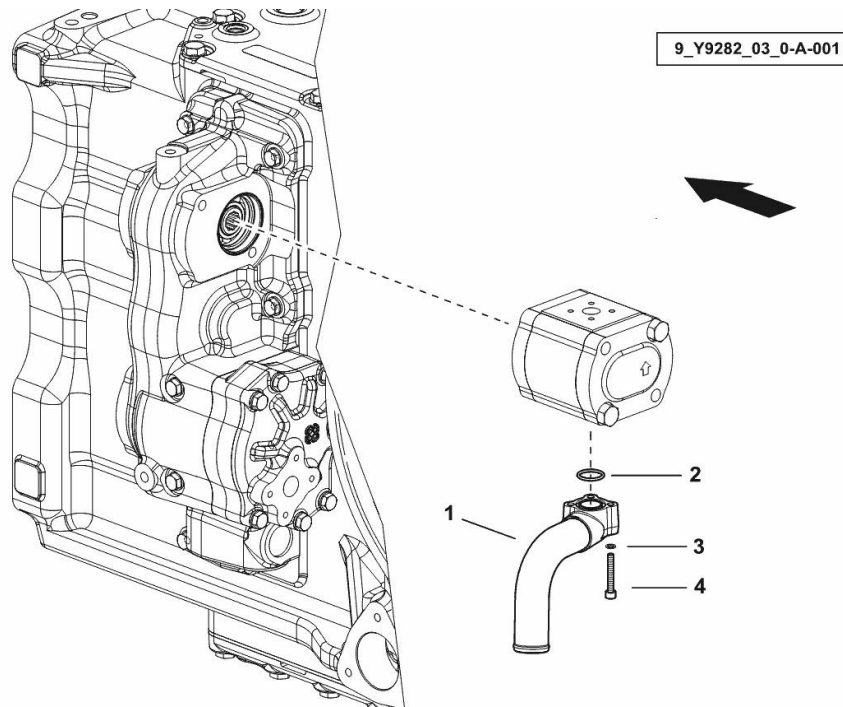
**PUMP INTAKE HYDRAULIC SYSTEM 14 cc dx/rh/re**

Fig.	P/n	QTY	Name
------	-----	-----	------

**Notes:**

[XM 120 T4i V-DRIVE]

1	0.020.0106.3	1	tube
2	2.1531.058.0	1	oil seal 22.22x2.62
3	2.1480.012.2	3	washer 6, d128
4	2.0312.114.2	3	screw m 6 p.1x40



**XM 120 T4i V-DRIVE**

Section: H0 - HYDRAULIC AND PNEUMATIC SYSTEM]

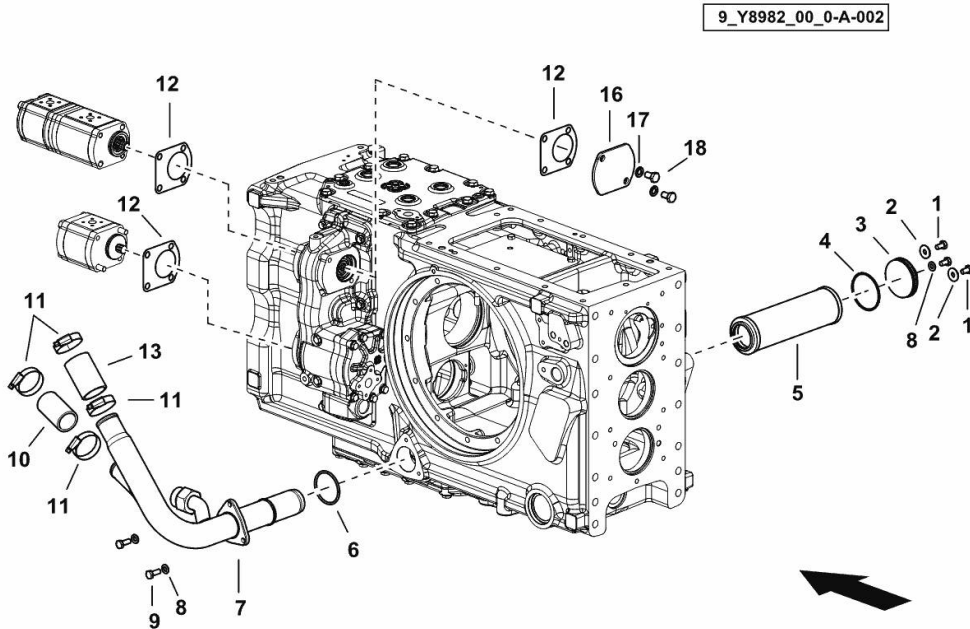
Ref: H0.01.9 (2)

**SUCTION HYDRAULIC SYSTEM 16+25 CC**

Fig.	P/n	QTY	Name
------	-----	-----	------

**Notes:**

[XM 120 T4i V-DRIVE]



1	2.0112.204.2	3	screw m 8 p.1.25x14
2	2.1312.004.3	2	washer 8,4x24x2
3	0.013.8789.0/10	1	cover
4	2.1532.157.0	1	ring 64.77x2.62
5	2.4419.795.0	1	hydr.oil filter elem.
6	2.1532.138.0	1	oil seal 55.56x3.53
7	0.019.7420.3	1	tube
8	2.1310.004.2	4	flat washer 8.4x17
9	2.0112.208.2	3	screw m 8 p.1.25 x 22
10	2.3213.234.0	1	sleeve Ø 34, L 70
11	2.6851.004.0	4	clamp Ø 32/50
12	0.9104.250.0/10	3	gasket
13	2.3213.240.0	1	sleeve
16	0.017.5073.0	1	cover
17	2.1474.010.2	2	washer 10
18	2.0112.306.2	2	screw m 10

**XM 120 T4i V-DRIVE**

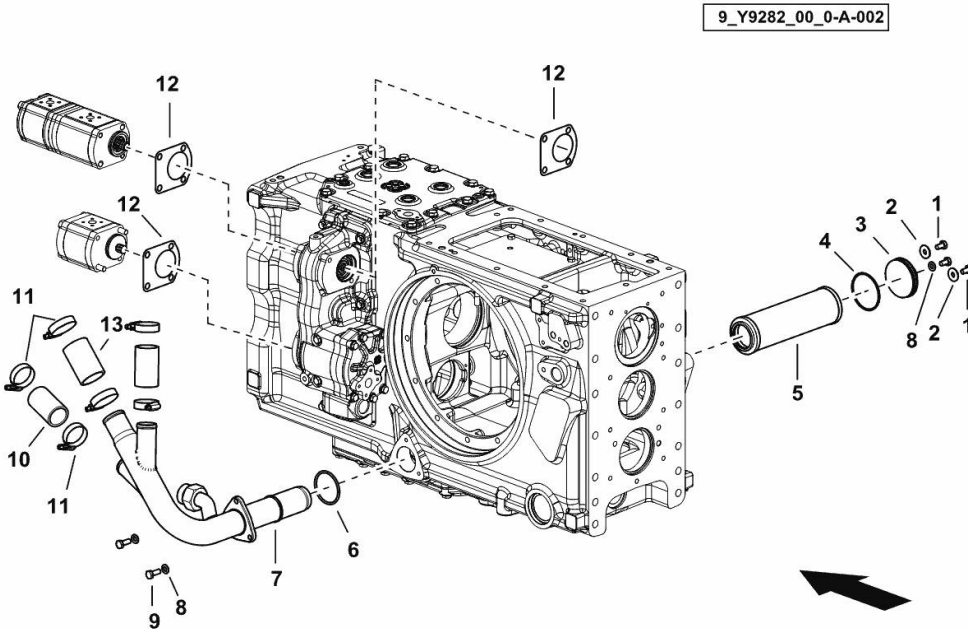
Section: H0 - HYDRAULIC AND PNEUMATIC SYSTEM|  
**SUCTION HYDRAULIC SYSTEM 16+22,5+14 CC**

Ref: H0.01.10 (2)

Fig.	P/n	QTY	Name
------	-----	-----	------

Notes:  
 [XM 120 T4i V-DRIVE]

1	2.0112.204.2	3	screw m 8 p.1.25x14
2	2.1312.004.3	2	washer 8,4x24x2
3	0.013.8789.0/10	1	cover
4	2.1532.157.0	1	ring 64.77x2.62
5	2.4419.795.0	1	hydr.oil filter elem.
6	2.1532.138.0	1	oil seal 55.56x3.53
7	0.019.7391.3	1	tube
8	2.1310.004.2	4	flat washer 8.4x17
9	2.0112.208.2	3	screw m 8 p.1.25 x 22
10	2.3213.234.0	2	sleeve Ø 34, L 70
11	2.6851.004.0	6	clamp Ø 32/50
12	0.9104.250.0/10	3	gasket
13	2.3213.240.0	1	sleeve



**HYDRAULIC SYSTEM**

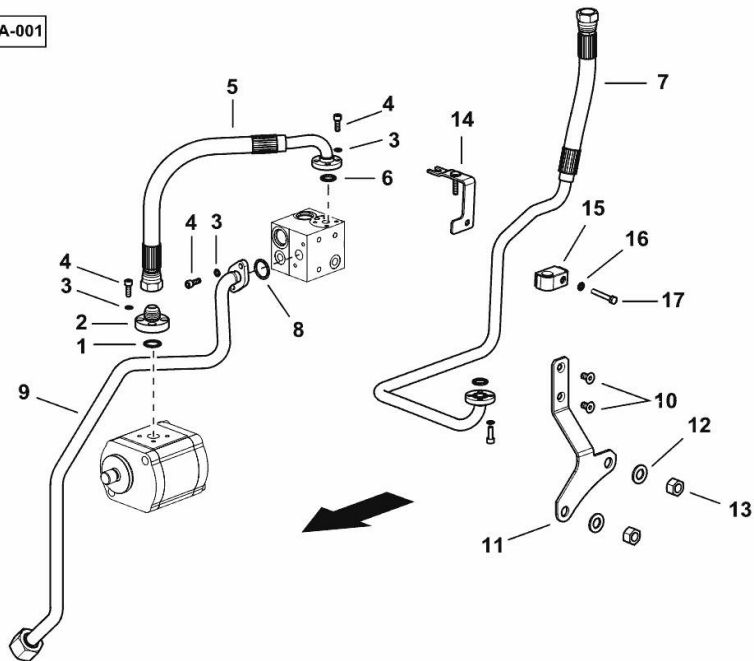
Fig.	P/n	QTY	Name
------	-----	-----	------

**Notes:**

- 60 LT ECO [XM 120 T4i V-DRIVE]

1	2.1531.052.0	1	oil seal 20.29 x 2.62
2	0.010.9142.0/10	1	flange
3	2.1480.012.2	12	washer 6, d128
4	2.0312.105.2	12	screw m 6 p.1 x 18
5	0.019.8984.3	1	tube
6	2.1531.043.0	2	oil seal 17.13x2.62
7	0.019.5376.3	1	tube
8	2.1531.062.0	1	oil seal 23.81 x 2.62
9	0.019.8985.3	1	tube
10	2.0342.303.6	2	screw m 8 p. 1.25x16
11	0.019.5710.0	1	bracket
12	2.1475.005.7	2	washer 14
13	2.1012.408.2	2	nut
14	0.020.0084.3	1	bracket
15	2.3320.108.0	1	terminal
16	2.1470.002.2	1	lock washer 6
17	2.0112.015.2	1	screw m 6 p.1x40

9\_Y9382\_66\_0-A-001



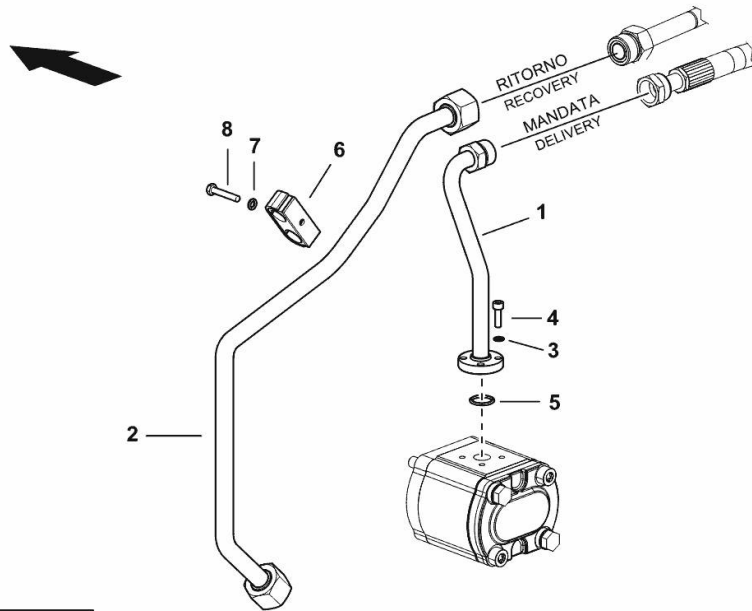
**HYDRAULIC SYSTEM**

Fig.	P/n	QTY	Name
------	-----	-----	------

**Notes:**

- FOR TYPES WITH ELECTROHYDRAULIC REMOTE CONTROL VALVE [XM 120 T4i V-DRIVE]

1	0.019.8410.3	1	tube
2	0.019.8411.3	1	tube
3	2.1480.012.2	4	washer 6, d128
4	2.0312.106.2	4	screw m 6 p.1 x 20
5	2.1531.052.0	1	oil seal 20.29 x 2.62
6	2.3320.220.0	1	terminal Ø 18/20 - typ A
7	2.1470.002.2	1	lock washer 6
8	2.0112.013.2	1	screw m 6 p.1 x 35



9\_Y9682\_66\_0-A-001

**XM 120 T4i V-DRIVE**

Section: H0 - HYDRAULIC AND PNEUMATIC SYSTEM|

Ref: H0.01.14 (1)

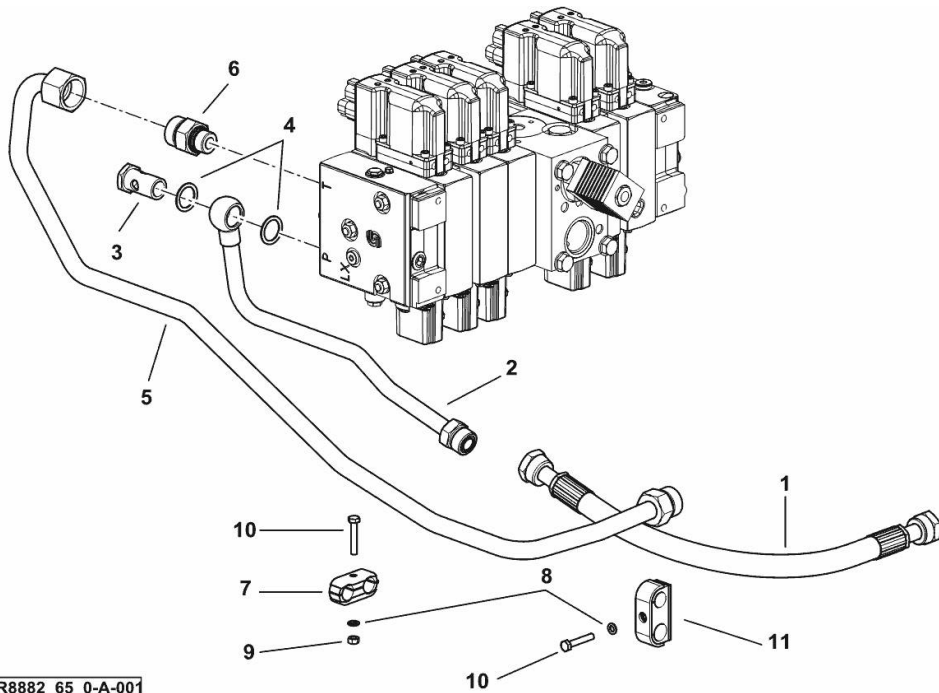
**HYDRAULIC SYSTEM FOR SECOND PUMP**

Fig.	P/n	QTY	Name
------	-----	-----	------

**Notes:**

- FOR TYPES WITH ELECTROHYDRAULIC REMOTE CONTROL VALVE [XM 120 T4i V-DRIVE]

1	0.017.8992.3	1	tube
2	0.017.8991.3	1	tube
3	2.3335.009.2	1	pipe union m 22 p.1.5 x 39
4	2.1560.018.0	2	gasket 22.2 x 29
5	0.017.8993.3	1	tube
6	2.3275.016.0	1	pipe fitting m 22
7	2.3321.020.0	1	collar Ø 16/16
8	2.1470.002.2	2	lock washer 6
9	2.1011.103.2	1	nut m 6 p.1
10	2.0112.013.2	2	screw m 6 p.1 x 35
11	2.3320.217.0	1	collar Ø 16/18



9\_R8882\_65\_0-A-001

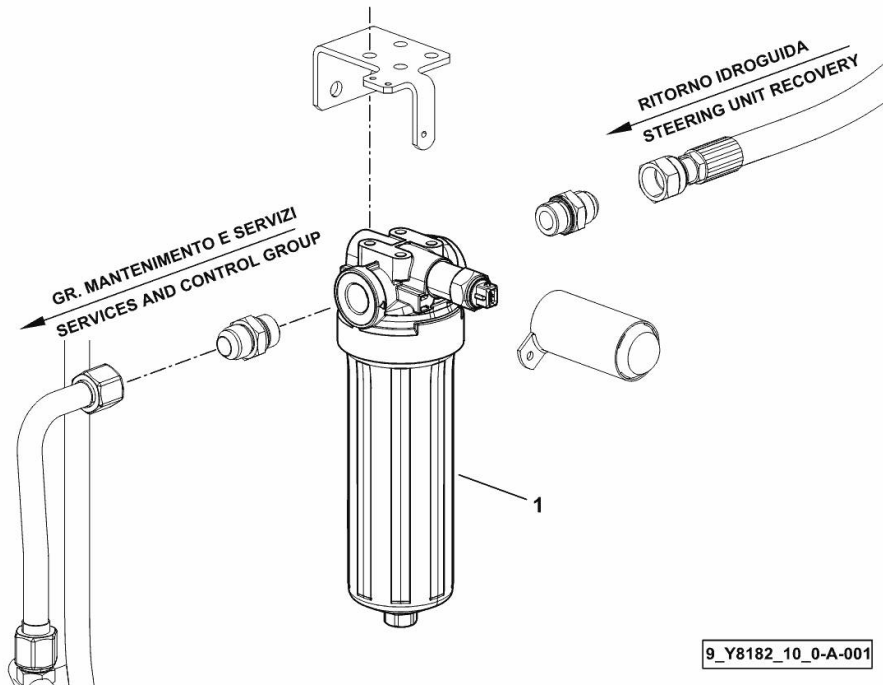
**OIL PRESSURE LINE FILTER**

Fig.	P/n	QTY	Name
------	-----	-----	------

**Notes:**

[XM 120 T4i V-DRIVE]

1	2.4419.813.0	1	oil filter 9" ☞ 2.4419.813.0
---	--------------	---	---------------------------------



Thank you so much for reading.  
Please click the “Buy Now!”  
button below to download the  
complete manual.



After you pay.

You can download the most  
perfect and complete manual in  
the world immediately.

Our support email:

[ebooklibonline@outlook.com](mailto:ebooklibonline@outlook.com)